



Title	How to move around and where to settle: environmental determinants of spatial behaviour in reintroduced lions (Panthera leo)
Author(s)	Yiu, SW; Keith, M; Parrini, F; Karczmarski, L
Citation	The 14th Savanna Science Network Meeting, Kruger National Park, South Africa, 13-17 March 2016.
Issued Date	2016
URL	http://hdl.handle.net/10722/235495
Rights	This work is licensed under a Creative Commons Attribution-NonCommercial-NoDerivatives 4.0 International License.

How to move around and where to settle:

Environmental determinants of spatial behaviour in reintroduced lions (*Panthera leo*)



Sze-Wing Yiu^{1,2}, Mark Keith³, Francesca Parrini² & Leszek Karczmarski¹

¹The Swire Institute of Marine Sciences, The University of Hong Kong

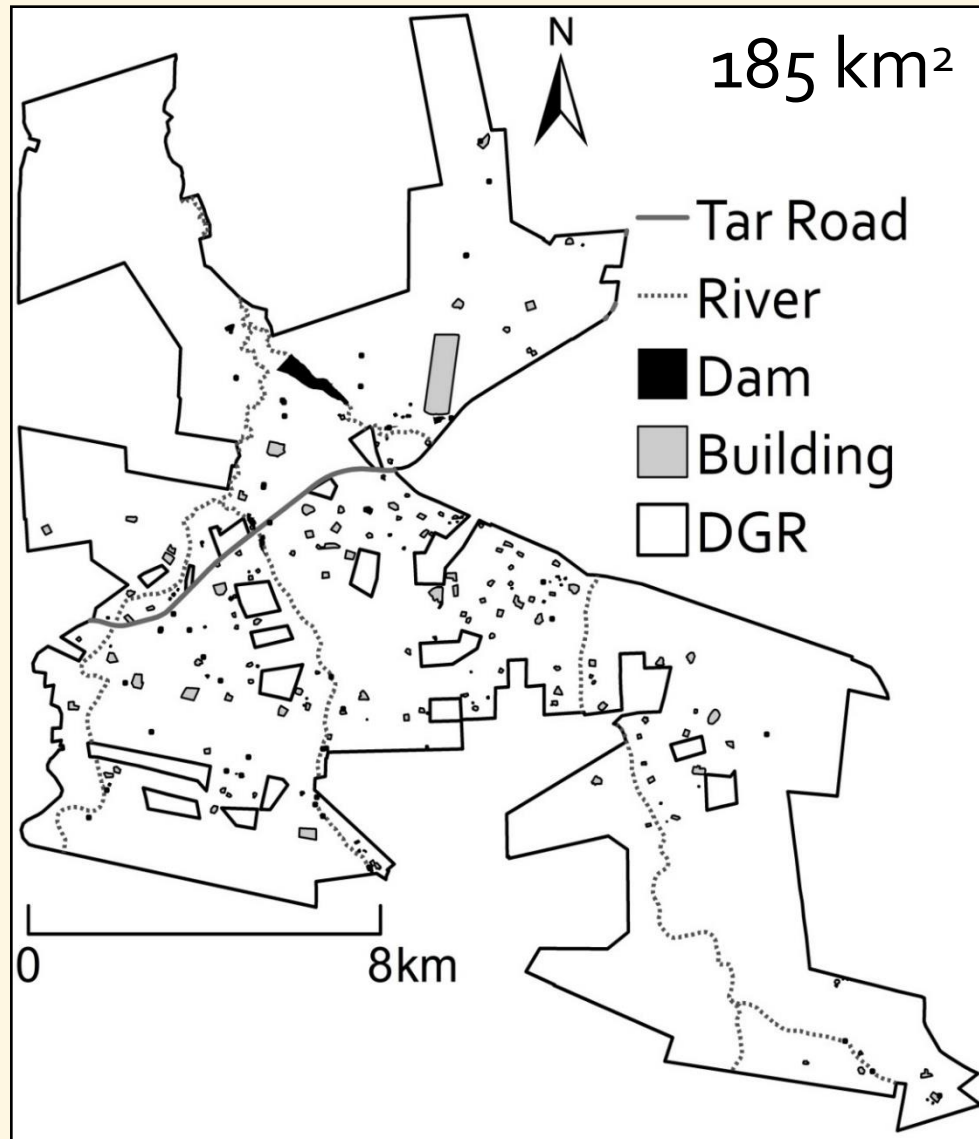
²Centre for African Ecology, University of the Witwatersrand

³Centre for Wildlife Management, University of Pretoria



METHODOLOGY

Dinokeng Game Reserve



Lions reintroduction

11 lions (4♂ 7♀)

3 separate releases (2011-13)



Satellite collared

6 GPS locations/day

METHODOLOGY

Habitat selection analyses

Oct 2011 – Sep 2014

2nd order: Home range (HR)

Utilization distribution

Time Local Convex Hull (T-LoCoH)

3rd order: Habitat features

Resource Selection Function (RSF)

Lions reintroduction

11 lions (4♂ 7♀)

3 separate releases (2011-13)

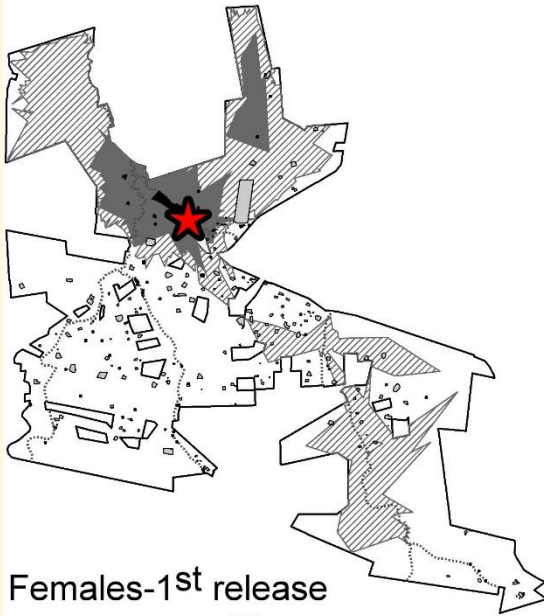


Satellite collared

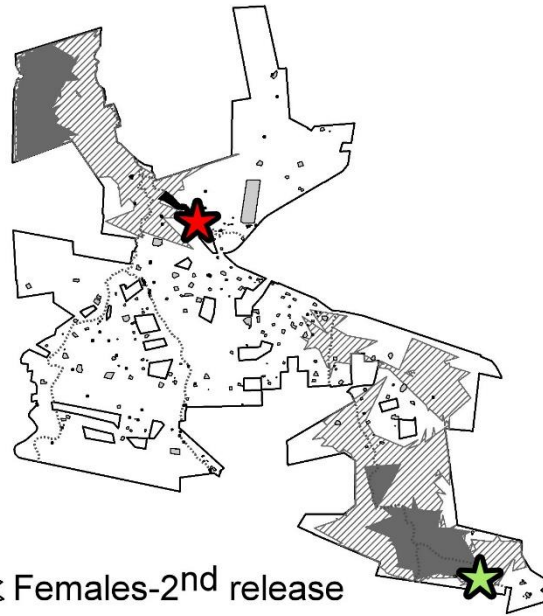
6 GPS locations/day

RESULTS: 2ND ORDER - HOME RANGE ESTABLISHMENT

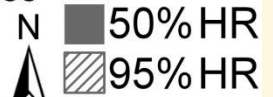
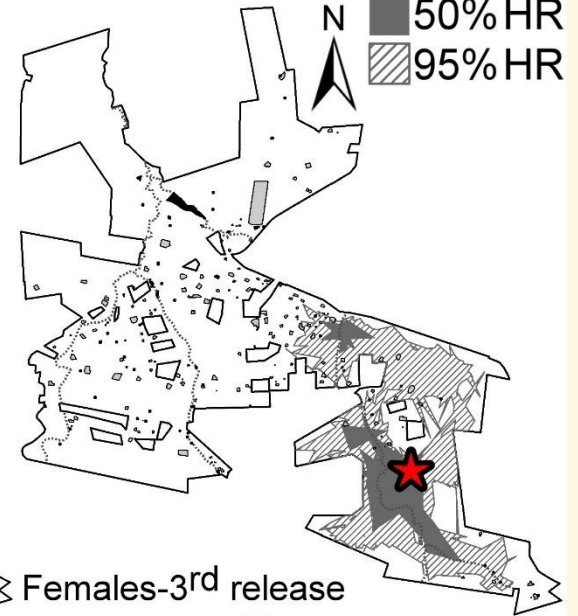
Males-1st release



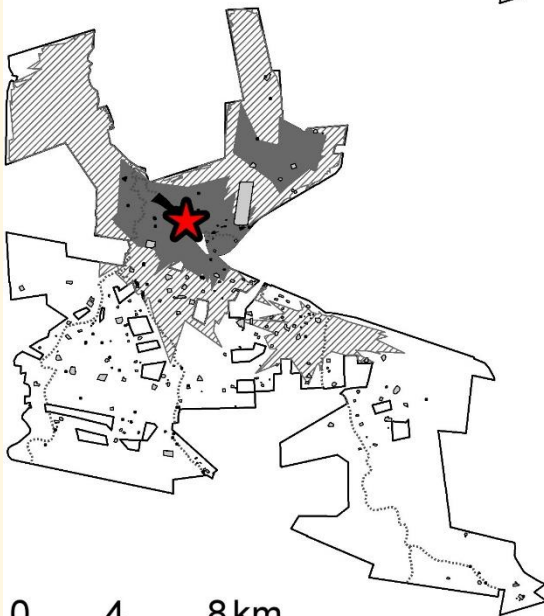
Males-2nd release



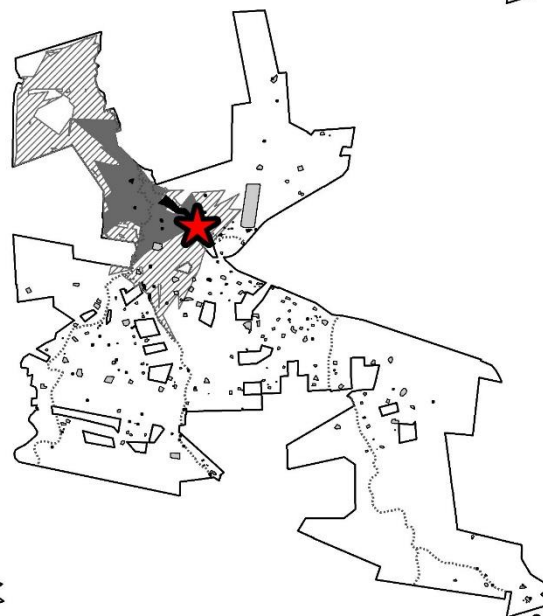
Females-3rd release



Females-1st release



Females-2nd release



Females-3rd release



★ Release site ★ Translocation

RESULTS: 2ND ORDER - HOME RANGE ESTABLISHMENT

Effects of territorial conflicts on HR overlap %

Event: Lions-2nd release killed by lions-1st release

Males-1st release: ↑ 66.72%

Females-1st release: ↑ 67.55%

Surviving male-2nd release: ↓ 90.69%



RESULTS: 3RD ORDER - HABITAT FEATURES

Areas close to dams, rivers & with high % tree cover
Riparian vegetation & seasonal floodplains

Response of lions to one unit increase in distance to dam



CONCLUDING THOUGHTS

- Release location affects long-term establishment
- Intra-specific competition leads to selections for sub-optimal resources
- Behavioural differences of animals reintroduced in different orders should be considered



ACKNOWLEDGEMENTS

Dinokeng Management Association



Kwalata Game Ranch



Mongena Game Lodge



iKhaya LamaDube Game Lodge



Mongena rangers

The Rufford Foundation:

Rufford Small Grants for Nature Conservation

