

# HEAL

## A SHELTER FOR THE HOMELESS IN TSHWANE

Investigating a suitable living environment for the *healing* and rehabilitation of people in crisis

Submitted in partial fulfillment of the requirements for the degree Magister of Architecture, March (Prof), the Faculty of Engineering, Built Environment and Information Technology.

University of Pretoria  
November 2010.

Study Leaders:  
Marga Viljoen  
Ida Breed



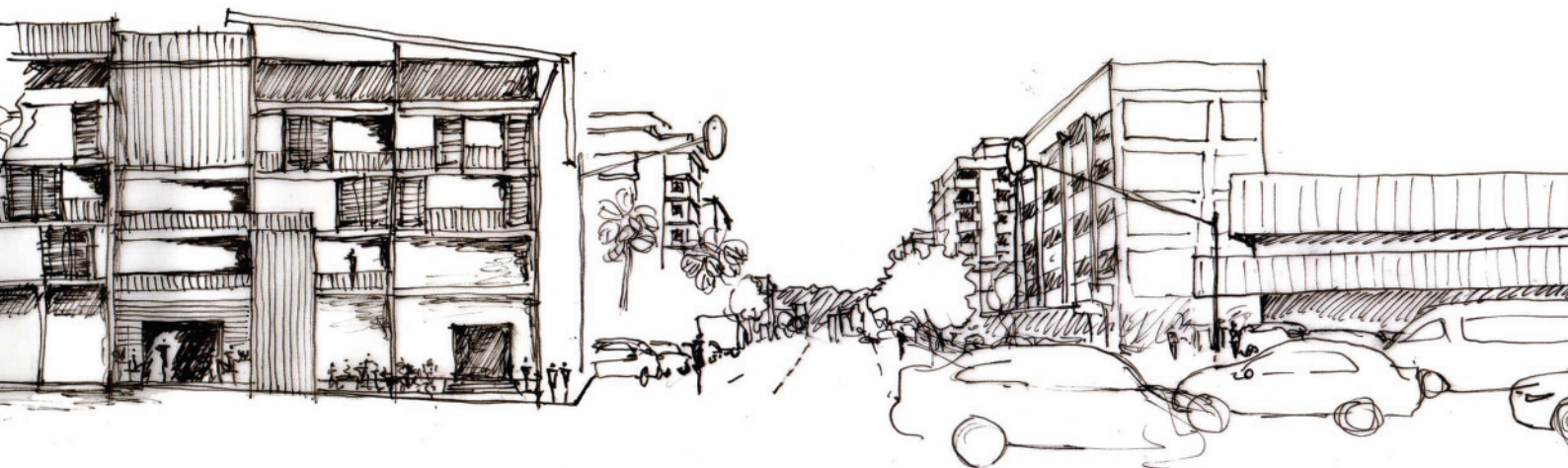
Figure 0.1: Elevation (Author)

# Abstract

This dissertation investigates suitable living environments for the healing and rehabilitation of people in crisis in South Africa, focusing on the human experience of space. Through the understanding of the problem and the context, the product of the investigation is a shelter for the homeless in the city of Tshwane. The shelter can be defined as transitional housing for the adult urban homeless and their children, which focuses on the healing and ultimate rehabilitation of homeless people, including the reintegration of these people into society. The significance of the project is that the development becomes a metaphor for the reintegration of people into society. The project aims to empower people to become contributing members of society and discontinues the cycle of destitution by providing an opportunity for economic activity and by improving the physical environment of the homeless as well as the physical environment of the community in general.

**HELING - 'n HEENKOME VIR HAWELOSES IN TSHWANE**  
**Onderzoek na 'n doelmatige leefomgewing gerig op die heling en rehabilitasie van mense in krisis**

*Die verhandeling ondersoek doelmatige leefomgewings gerig op die heling and rehabilitasie van mense in krisis in Suid-Afrika en fokus op die menslike ervaring van ruimte. Na insae in die probleem en konteks, is die produk van die ondersoek 'n heenkome vir die haweloses in die stad van Tshwane. Die toevlugoord kan gedefinieer word as oorgangsbehuising vir die volwasse stedelike haweloses en hulle kinders, met die klem op heling en uiteindelijke rehabilitasie van hawelose mense, met inbegrip van hierdie mense se reïntegrasie in die gemeenskap. Die waarde van die projek is dat die ontwikkeling 'n metafoor word vir die reïntegrasie van mense in die samelewing. Die doelwit van die projek is om mense te bemagtig om bydraende lede van die samelewing te word en die kringloop van brandarmoede te verbreek deur 'n geleentheid vir ekonomiese aktiwiteite te bied en die fisiese omgewing van die haweloses, sowel as van die van die breër gemeenskap, te verbeter.*



## Project information:

- Address:** 555 Church Street  
Arcadia  
Tshwane  
c/ o Church & Hamilton
- Function:** A shelter for the homeless that focuses on the process of healing, to achieve reintegration into society
- Research Field:** Housing and Urban Environments

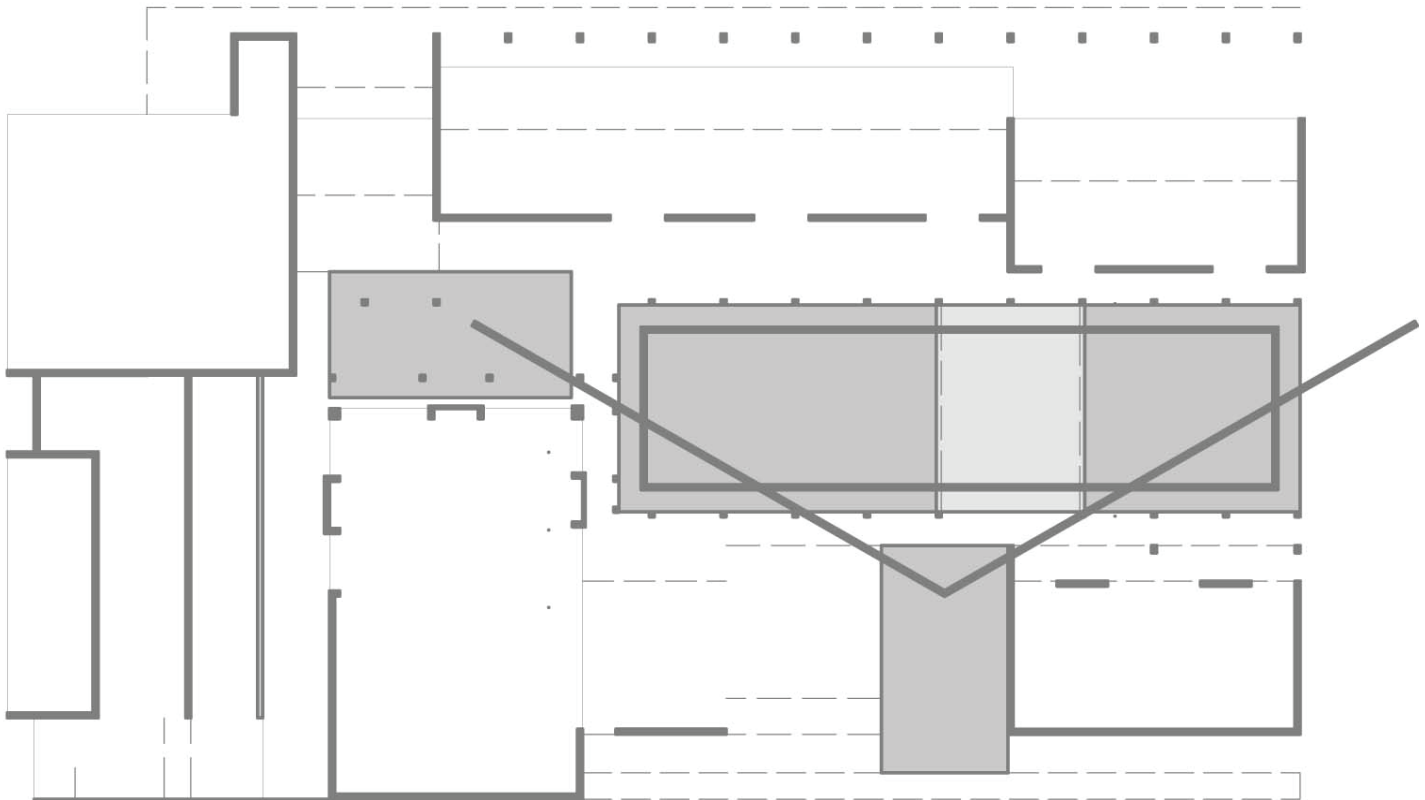


Figure 0.2: Parti (Author)

**My greatest thanks** to my mom **Marguerite**, my dad **Erich**, my partner **Theo**, my cousin **Deline**, my sister **Sue**, my friend **Kathy**, my study leaders **Marga & Ida** and my mentor **Arthur**.

# Table of contents

00.	<b>List of Figures &amp; Tables</b>	vi	01.
01.	<b>Introduction</b>	01	
	Background of the Study	01	
	Problem Statement and Architectural Intention/ Aim	03	
	Research Question	03	
	Hypothesis	03	
	Sub Questions	03	
	The Aim of the Study	03	02.
	Research Methods and Methodology	04	
	<b>Client, Programme, Site</b>	05	
02.	<b>Theoretical Investigation</b>		
	<b>Healing Environments for People in Crisis</b>	09	
	Introduction	09	03.
	The Role of Place in Health and Healing	09	
	Healthy Environments	10	
	The Experience of Space	11	
	Universal Environmental Aspects that Contribute to a Positive Experience of Space and to the Process of Healing	15	
	The experience of home and homelessness	20	
	Healing Environments for People in Crisis: particularly the homeless	22	
	Design Strategies for Healing Environments Inhabited by People in Crisis: particularly the homeless	23	
	Precedents	23	04.
	Mental Health Centre	23	
	Pine Street Inn	24	
	Van Ryn Place of Safety	25	
	Cité de Refuge	26	
	Julian Street Inn	26	
	Maternity and Children's Hospital	26	
	The Patrick H. Dollard Discovery Health Centre	27	
	Conclusion	27	
	Summary of Theoretical Investigation	29	05.
03.	<b>Contextual Study</b>	31	
	Welfare Organisations	31	
	The Current situation of Shelters in Pretoria Central	32	
	Urban Framework	33	
	Arcadia	41	
	Site	44	
04.	<b>Design Development</b>	51	06.
	Integration of Theory, Precedents and Contextual Study		
05.	<b>Technical Resolution</b>	95	
	Integration of Theory, Precedents, Contextual Study and Design		
06.	<b>Conclusion</b>	127	
07.	<b>References</b>	129	07.
08.	<b>Appendix</b>	133	
	Interviews:		
	The Potter's House		
	The Salvation Army		
	MacDonald's		
	Housing Precedents		08.

## 00.

### 00.

# List of figures

Figure 0.1: Elevation (Author, 2010)

Figure 0.2: Parti (Author, 2010)

Figure 0.3: 3D (Author, 2010)

### 01.

Figure 1.1: Local homeless man with a sign reading “please help me”. Online (<http://www.griquas.com/2007/4/017.jpg>) September 2010

Figure 1.2: Informal settlement. Online (<http://cstsouthafrica.files.wordpress.com/2010/09/0914-slums-sm.jpg>) September 2010

Figure 1.3: Research Questions (Author, 2010)

Figure 1.4: Approach to the study (Author, 2010)

Figure 1.5: Diagram illustrating the process and activates incorporated in the shelter. (Author, 2010)

Figure 1.6: The Salvation Army, Pretoria West (Author, 2010)

Figure 1.7: Existing hostel, Mamelodi (Author, 2009)

Figure 1.8: N2 Gateway – Joe Slovo, Cape Town. (SHIFT Resource Book, 2009: 51)

Figure 1.9: Brickfields, Johannesburg. Online (<http://www.jhc.co.za/files/image/buildings/Phumlani.jpg>) September 2010

Figure 1.10: The site is a transitional zone (Author, 2010)

Figure 1.11: Section of Existing Site Condition (Author, 2010)

Figure 1.12: Plan of Existing Site Condition (University of Pretoria Department of Geography & Author, 2010)

### 02.

Figure 2.1: Summary (Author, 2010)

Figure 2.2: Image illustrating the effect of design on socialisation (Cave, 1998: 97)

Figure 2.3: Environment and social capital is as important as individual behaviour on wellbeing (Author, 2010)

Figure 2.4: Material Influences (Author, 2010)

Figure 2.5: In order to create a healing and healthy environment, the environment must first be conserved (Author, 2010)

Figure 2.6: Some socio-cultural features: politics, religion and identity. Online ([http://www.marxist.com/images/stories/south\\_africa/ballot\\_paper09.jpg](http://www.marxist.com/images/stories/south_africa/ballot_paper09.jpg)) September 2010

Figure 2.7: Some socio-cultural features: politics, religion and identity. Online (<http://www.iclrs.org/common/images/blurb/2009/08/1251251163.jpg>) September 2010

Figure 2.8: Some socio-cultural features: politics, religion and identity. Online ([http://www.stonehaven.co.za/content/tinyMCE/plugins/openfile/uploads/images/sa\\_flag.jpg](http://www.stonehaven.co.za/content/tinyMCE/plugins/openfile/uploads/images/sa_flag.jpg)) September 2010

Figure 2.9: Experience of Space (Author, 2010)

Figure 2.10: Some South African cultures and identities. Online ([http://news.nationalgeographic.com/news/2004/12/photogalleries/south\\_africa\\_faces/photo9.html](http://news.nationalgeographic.com/news/2004/12/photogalleries/south_africa_faces/photo9.html)) September 2010

Figure 2.11: Some South African cultures and identities. Online ([http://news.nationalgeographic.com/news/2004/12/photogalleries/south\\_africa\\_faces/images/primary/Indian.jpg](http://news.nationalgeographic.com/news/2004/12/photogalleries/south_africa_faces/images/primary/Indian.jpg)) September 2010

Figure 2.12: Some South African cultures and identities. Online (<http://www.african-safari-and-travel-advisor.com/images/african-tribe-culture-ndebele-woman-in-window-w-south-african-tourism-u.jpg>) September 2010

Figure 2.13: Some South African cultures and identities. Online ([http://news.nationalgeographic.com/news/2004/12/photogalleries/south\\_africa\\_faces/photo3.html](http://news.nationalgeographic.com/news/2004/12/photogalleries/south_africa_faces/photo3.html)) September 2010

Figure 2.14 & 2.15: Holl's proposal for housing in the Philippines (Holl, 1989: 14+15)

Figure 2.16: Lively natural light from two different windows within in room (Day, 1990: 21)

Figure 2.17: Curved corridor with different intensities of light and places to socialize (Day, 1990: 22)

Figure 2.18: Entrance into a building changes the inner state (Day, 1990: 23)

Figure 2.19: Pietermaritzburg Forest. Online (<http://www.ukzn.ac.za/inverts/upload/DSC01303.JPG>) March 2010

Figure 2.20-22: The five senses. Online ([http://www.flash-screen.com/free-wallpaper/uploads/200902/imgs/1235114612\\_1024x768\\_leah-dizon-pretty-face.jpg](http://www.flash-screen.com/free-wallpaper/uploads/200902/imgs/1235114612_1024x768_leah-dizon-pretty-face.jpg)) September 2010

Figure 2.23: The five senses. Online (<http://www.mccullagh.org/db9/1ds2-2/ear-closeup.jpg>) September 2010

Figure 2.24: The five senses. Online (<http://images.inmagine.com/img/photoalto/paa213/paa213000043.jpg>) September 2010

Figure 2.25: Vegetation softens surroundings aiding in the healing process (Author, 2010)

Figure 2.26: The horror of sterile, repetitive environments. Online (<http://www.mtholyoke.edu/~rtschnei/images/housing%20slum.jpg>) September 2010

Figure 2.27: Maslow's hierarchy of needs (Maslow, 1973: 374 adapted by Author, 2010)

Figure 2.28: Home as the centre of ones lived world (Author, 2010).

Figure 2.29: Homeless man. Online ([http://rudijeggle.co.za/wp-content/uploads/2009/05/img\\_6570-copy.jpg](http://rudijeggle.co.za/wp-content/uploads/2009/05/img_6570-copy.jpg)) September 2010

Figure 2.30: Colour has a profound universal effect on peoples experiences. Online

(<http://www.thedailygreen.com/cm/thedailygreen/images/TY/green-tips-gifts-lg.jpg>)  
September 2010

Figure 2.31: Colour has a profound universal effect on peoples experiences. Online  
(<http://www.worldgallery.co.uk/art-print/Fabrique-de-Sari%2C-Rajasthan%2C-Inde-54035.html>) September 2010

Figure 2.32: Colour has a profound universal effect on peoples experiences. Online  
([http://29.media.tumblr.com/tumblr\\_l7oh64zKut1qzd1fwo1\\_500.jpg](http://29.media.tumblr.com/tumblr_l7oh64zKut1qzd1fwo1_500.jpg)) September 2010

Figure 2.33: Colour has a profound universal effect on peoples experiences.  
Online (<http://images.worldgallery.co.uk/i/prints/rw/lg/6/0/Derek-Hare-Into-the-Blue-60255.jpg>) September 2010

Figure 2.34: Plan of Estelle's Garden (Brown, 2005: 24)

Figure 2.35: Van Ryn Place of Safety quality of light (Comrie, 2003: 30)

Figure 2.36: Spatial layout creating intimate spaces. Online ([http://www.comwilk.co.za/index\\_files/Page795.htm](http://www.comwilk.co.za/index_files/Page795.htm)) March 2010

Figure 2.37: Drawing illustrating the concept of "Borrowed light"  
(Comrie, 2003: 30)

Figure 2.38: Cité de Refuge. Online (<http://www.galinsky.com/buildings/refuge/index.htm>) March 2010

Figure 2.39: Julian Street Inn. Online (<http://www.kataraxis3.com/Gallery.htm>)  
March 2010

Figure 2.40: Transitional space between inside and outside. Online (<http://www.patternlanguage.com/houses/houses.htm>) March 2010

Figure 2.41: The Maternity and Children's Hospital. Online ([http://commons.wikimedia.org/wiki/File:Maternidad\\_de\\_O'Donnell\\_\(Madrid\)\\_01.jpg](http://commons.wikimedia.org/wiki/File:Maternidad_de_O'Donnell_(Madrid)_01.jpg)) June 2010

Figure 2.42: Health Centre. Online  
([http://hpb.buildinggreen.com/cgi-bin/projectscale.cgi?max=350&src=/project\\_233/FinishedConstruction.jpg](http://hpb.buildinggreen.com/cgi-bin/projectscale.cgi?max=350&src=/project_233/FinishedConstruction.jpg)) June 2010

Figure 2.43: Diagram illustrating the sense of empowerment achieved through the  
notion of connection, independence and transition (Author, 2010)

Figure 2.44: Diagram illustrating the concept of transition (Author, 2010)

### **03.**

Figure 3.1: Existing Welfare Organisations within Pretoria Central (University of  
Pretoria Department of Geography & Author, 2010)

Figure 3.2: TLF Offices Burgers Park, Potter's House located behind (Author, 2010)

Figure 3.3: Potter's House Reception (Author, 2010)

Figure 3.4: Urban Framework Study Area (Author & Urban Framework Group,  
2010)

Figure 3.5: BRT Route (Author, 2010)

Figure 3.6: Movement (Author, 2010)



Figure 3.7: Public Transport (Author, 2010)

Figure 3.8: Districts (Author, 2010)

Figure 3.9: Open Space System (Author, 2010)

Figure 3.10: Movement (Author & Urban Framework Group, 2010)

Figure 3.11: Public Transport (Author & Urban Framework Group, 2010)

Figure 3.12: Districts (Author & Urban Framework Group, 2010)

Figure 3.13: Open Space (Author & Urban Framework Group, 2010)

Figure 3.14: 4 Major Urban Structuring Elements (Author & Urban Framework Group, 2010)

Figure 3.15: Ceremonial Route and BROWNway (Author, 2010)

Figure 3.16: Heritage (Author, 2010)

Figure 3.17: Outside 500m radius of BRT stop (Author, 2010)

Figure 3.18: The Suburb Arcadia in relation to Church Square (University of Pretoria Department of Geography & Author, 2010)

Figure 3.19: Mill and Mr. Meintjies' residence (Swanepoel, 2007: 7)

Figure 3.20: Later photo of mill & residence (Swanepoel, 2007: 7)

Figure 3.21: Map of Pretoria in 1841, 1855 (Corten & van Dun, 2009: 12) & 1889 (Andrews, 1989: i)

Figure 3.22: Mr. Meintjies' residence (Swanepoel, 2007: 8)

Figure 3.23: Arcadia Mills (Swanepoel, 2007: 9)

Figure 3.24: Photo of the opening of the bridge by President Kruger (Swanepoel, 2007: 10).

Figure 3.25: Lion's bridge (Swanepoel, 2007: 10)

Figure 3.26: Present day photo of Lion's Bridge (Author, 2009).

Figure 3.27: Hamilton Street looking north east (Author, 2010).

Figure 3.28: East- West section of the current site condition (Author, 2010)

Figure 3.29: 3 Dimensional view of the current site condition (Author, 2010)

Figure 3.30: North view of current site condition (Author, 2010)

Figure 3.31: 360° view from site (Author, 2010)

Figure 3.32: Existing single storey building to be demolished (Author, 2010)

Figure 3.33: Illustrating the amount of under-utilised space on the site (Author, 2010)

Figure 3.34: Illustrating the dead city sidewalk caused by the un-interactive palisade fence around the site (Author, 2010)

Figure 3.35: 12:00 sun angles for Pretoria (Holm, 1997: 72)

Figure 3.36 : Wind rose for Pretoria (Holm, 1997: 70)

Figure 3.37: Weather over Tshwane. Online ([http://www.africanphotographyblog.com/wp-content/uploads/2009/10/Lightning\\_Photoshopped\\_By\\_Nature\\_MITCHELL\\_KROG\\_D3X9231.jpg](http://www.africanphotographyblog.com/wp-content/uploads/2009/10/Lightning_Photoshopped_By_Nature_MITCHELL_KROG_D3X9231.jpg)) September 2010

Figure 3.38: Weather over Tshwane. Online ([http://farm5.static.flickr.com/4025/4385994419\\_78e06609b1\\_m.jpg](http://farm5.static.flickr.com/4025/4385994419_78e06609b1_m.jpg)) September 2010

Figure 3.39: Weather over Tshwane. Online ([http://www.africanphotographyblog.com/wp-content/uploads/2009/09/MITCHELL\\_KROG\\_Fort\\_Schanskop\\_Voor-trekker\\_Monument\\_Pretoria\\_Tshwane\\_D3X5893\\_D3X5897.jpg](http://www.africanphotographyblog.com/wp-content/uploads/2009/09/MITCHELL_KROG_Fort_Schanskop_Voor-trekker_Monument_Pretoria_Tshwane_D3X5893_D3X5897.jpg)) September 2010

Figure 3.40: Solar chart for Pretoria (Grobbelaar, 2006: 40)

Figure 3.41: 1947 Aerial photograph of the site (University of Pretoria Library Services Africana Collection & Author, 2010)

Figure 3.42: 2010 Aerial photograph of the site (University of Pretoria Department of Geography & Author, 2010)

## **04.**

Figure 4.1: Massing model (Author, 2010)

Figure 4.2: Concept Diagram (Author, 2010)

Figure 4.3: Development of parti diagram (Author, 2010)

Figure 4.4: Concept development 1 (Author, 2010)

Figure 4.5: Concept development 2 (Author, 2010)

Figure 4.6: Concept development 3 (Author, 2010)

Figure 4.7: Concept development 4 (Author, 2010)

Figure 4.8: Concept development 5 (Author, 2010)

Figure 4.9: Concept development 6 (Author, 2010)

Figure 4.10: Development of northern façade (Author, 2010)

Figure 4.11: Development of western façade (Author, 2010)

Figure 4.12: Site Plan (Author, 2010)

Figure 4.13: Ground floor, scale 1:200 (Author, 2010)

Figure 4.14: Explanation of plan (Author)

Figure 4.15: Links and access on ground floor (Author, 2010)

Figure 4.16: Section AA (Author, 2010)

Figure 4.17: Section BB (Author, 2010)

Figure 4.18: Elevation (Author, 201)

Figure 4.19: Elevations (Author, 2010)

Figure 4.20: Ground floor plan (Author, 2010)

Figure 4.21: First Floor Plan (Author, 2010)

Figure 4.22: Shelter for the homeless (Author, 2010)

Figure 4.23: Social and higher income housing (Author, 2010)

Figure 4.24: Offices (Author, 2010)

Figure 4.25: Second floor plan (Author, 2010)

Figure 4.26: Third Floor Plan (Author, 2010)

Figure 4.27: Fourth Floor Plan (Author, 2010)

Figure 4.28: Emergency housing: Alternative use for dining hall (Author, 2010)

Figure 4.29: 3D (Author, 2010)

Figure 4.30: 3D (Author, 2010)

## 05.

Figure 5.1: The roof construction is independent from the concrete frame structure (Author, 2010)

Figure 5.2: Individually units are positioned independently from the structure (Author, 2010)

Figure 5.3: By celebrating the connections different elements and materials are joined to illustrate their independence (Author, 2010)

Figure 5.4: Structural elements are used to illustrate the directionality of the building's transition from public to private (Author, 2010)

Figure 5.5: Structure and internal space (Author, 2010)

Figure 5.6: Section AA (Author, 2010)

Figure 5.7: Section BB (Author, 2010)

Figure 5.8: Section CC (Author, 2010)

Figure 5.9: Section AA, scale 1:50 (Author, 2010)

Figure 5.10- 13: Structural system (Author, 2010)

Figure 5.14: Rain water collection (Author, 2010)

Figure 5.14: Natural light (Author, 2010)

Figure 5.16 - 18: Ventilation (Author, 2010)

Figure 5.19: Shelter entrance – timber screen, transitional layers (Messedat, 2007: 223)

Figure 5.20: Timber shutters for units. Online ([http://bp1.blogger.com/\\_kLLeYeQqt8M/SI2i4Puiral/AAAAAAAAACRQ/a5mRIZbsV0E/s1600-h/coucil+house+facade2.jpg](http://bp1.blogger.com/_kLLeYeQqt8M/SI2i4Puiral/AAAAAAAAACRQ/a5mRIZbsV0E/s1600-h/coucil+house+facade2.jpg)) October 2010

Figure 5.21: Roof covering IBR. Online ([www.youngman.co.za](http://www.youngman.co.za)) October 2010

Figure 5.22: Brick infill. Online (<http://www.re-nest.com/uimages/re-nest/loft-concrete-column.gif>) October 2010

Figure 5.23: Structural System – Concrete columns. Online (<http://www.re-nest.com/uimages/re-nest/loft-concrete-column.gif>) October 2010

Figure 5.24: Roof structure - I-beams. Online (<http://www.flickr.com/photos/tendrill/144665052/sizes/z/in/photostream/>) October 2010

Figure 5.25: Herring bone paving. Online (<http://www.metrojacksonville.com/article/2008-sep-a-secret-under-oak-street>) October 2010

Figure 5.26: Sustainability: passive design (Author, 2010)

Figure 5.27- 31: Details (Author, 2010)

## **06.**

Figure 6.1: Protective boundary and inner core (Author, 2010)

## **07.**

Figure 7.1: Sancardia, North West c/ o Hamilton and Church Street (Author, 2010)

Figure 7.2: Hamilton Street (Author, 2010)

## **08.**

Figure 8.1: Entrance to Tshwane Leadership Foundation Complex, Burgers Park (Author, 2010)

Figure 8.2: Plan of The Potter's House (Author, 2010)

Figure 8.3: Sign from street (Author, 2010)

Figure 8.3: Entrance (Author, 2010)

Figure 8.4: Approach (Author, 2010)

Figure 8.5: Garden (Author, 2010)

Figure 8.6: The Salvation Army (Author, 2010)

Figure 8.7: Dining Hall (Author, 2010)

Figure 8.8: Kitchen (Author, 2010)

Figure 8.9: Chapel (Author, 2010)

Figure 8.10: "Library" (Author, 2010)

Figure 8.11: Facilities (Author, 2010)

Figure 8.12: Social space (Author, 2010)

Figure 8.13: McDonalds (Author, 2010)

Figure 8.14: Deliveries (Author, 2010)

Figure 8.15: Dry store (Author, 2010)

Figure 8.16: Fridge (Author, 2010)

Figure 8.17: Freezer (Author, 2010)

Figure 8.18: Wash & Sanities Equipment (Author, 2010)

Figure 8.19: Kitchen (Author, 2010)

Figure 8.20: Kitchen (Author, 2010)

Figure 8.21: Deep fryers (Author, 2010)

Figure 8.22: Ovens & warming draws (Author, 2010)

Figure 8.23: Deep fryers (Author, 2010)

Figure 8.24: Kitchen (Author, 2010)

Figure 8.25: Hard at work 1 (Author, 2010)

Figure 8.26: Hard at work 2 (Author, 2010)

Figure 8.27: Hard at work 3 (Author, 2010)

Figure 8.28: Staff room (Author, 2010)

Figure 8.29: Restroom (Author, 2010)

Figure 8.30: Restroom ventilation (Author, 2010)

Figure 8.31: Plant room (Author, 2010)

Figure 8. 32: Plan (Google Earth & Author, 2010)

Figure 8.33: Cité de Refuge. Online (<http://www.galinsky.com/buildings/refuge/index.htm>) March 2010

Figure 8.34: Julian Street Inn. Online (<http://www.katarxis3.com/Gallery.htm>) March 2010

Figure 8.35: 68 Social Housing. Online (<http://www.dezeen.com/2009/12/22/68-social-housing-by-magen-arquitectos/>) July 2010

Figure 8.36: Brickfields. Online ([http://www.joburgnews.co.za/2005/jul/jul1\\_brickfields.stm](http://www.joburgnews.co.za/2005/jul/jul1_brickfields.stm)) July 2010

Figure 8.37: Frans van der Werf (van der Werf, 1993: cover)

Figure 8.38: Quinta Monroy. Online (<http://www.elementalnyc.com>) March 2010

Figure 8.39: Van Ryn Place of Safety (Comrie, 2003: 30)

# List of tables

Table 1.1: Reasons for homelessness.  
(Cross, 2010: 147)

Table 3.1 Pretoria Climate (adapted from Holm, 1997: 69)

Table 3.2: 12:00 sun angles for Pretoria (adapted from Holm, 1997: 72)

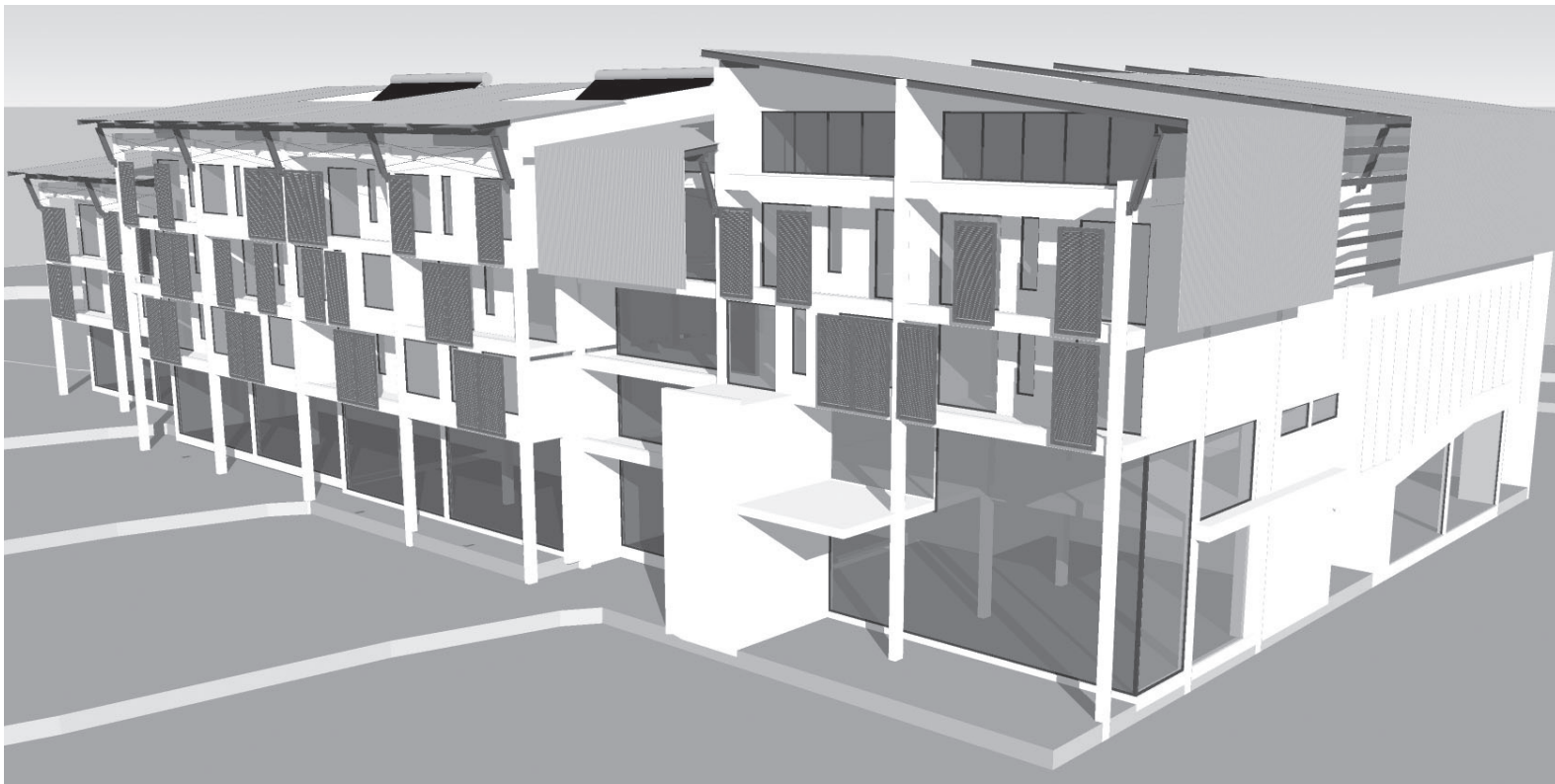


Figure 0.3: 3D (Author)