

TRANSPLACE

An architectural intervention for people in transition

Christina Isabella Meiring

Submitted in fulfillment of part of the requirements for the degree in Magister of Architecture (Professional) in the Faculty of Engineering, Built Environment and Information Technology, University of Pretoria, South Africa. November 2007

Mentor: Chris Wilkinson
Study Leader: Barbara Jekot

O.4_Abstract

Identity, belonging and being are some of the aspects inventively explored in this document. In times of fundamental change, people tend to find a space, lose it and then find another space as life and the world transform around them.

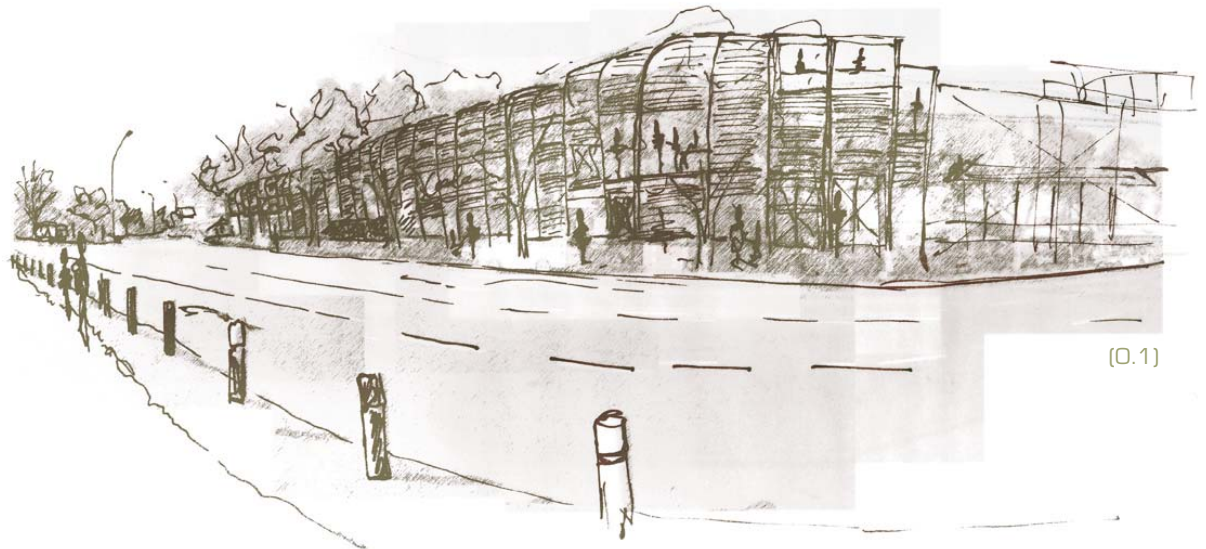
What does this metamorphosis entail and in what ways are we affected by it? How do we live through it and what may we become on our journey towards each other, particularly when the space and places from which we depart are – at least on the surface – so vastly different?

Within our voyages of transitional discovery, we too often repudiate the underlying structure from which our values, norms and standards are born – the configuration of beliefs that, when being threatened, results in conflict, bringing forth anger and dispute.

The proposed discourse initiates another way of being by concretizing phenomenological philosopher Martin Heidegger's notion of dwelling. Heidegger's major means of investigation is etymological, where he investigates the word history of 'to build', and its links to dwelling. He argues that as human beings, we cannot fail to dwell, for dwelling ultimately, is the essential existential core of

human being-in-the-world from which there is no escape. However, a major problem with dwelling as an idea is its lack of specificity.

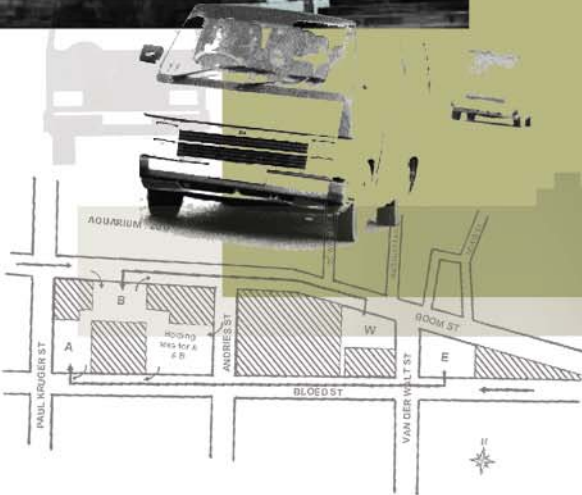
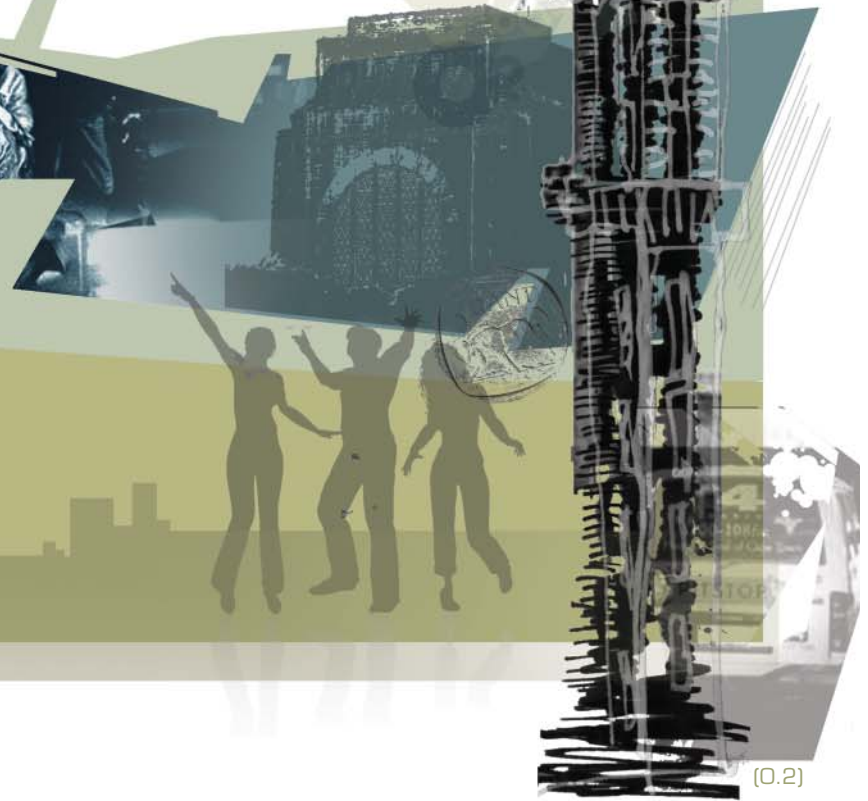
The discourse accordingly explores the contributions made by American architect Christopher Alexander, indicating important ways in which Heidegger's dwelling can be translated into more grounded architectural meaning. Within the urban context, the design addresses these fundamental structures of being and the predicaments experienced between people and place.



(O.1)



| | | |
|----------|---------------------|-----|
| 0 | TRANPOSE | 1 |
| 1 | TRANSCENDENT | 14 |
| 2 | TRANSPIRE | 22 |
| 3 | TRANSLATE | 36 |
| 4 | TRANSUDE | 80 |
| 5 | TRANFIGURE | 104 |
| 6 | TRANSCRIBE | 184 |



(O.2)

| Page | Chapter | Title |
|------|----------|--|
| 1 | 0 | Transpose |
| i | 0.1 | Depth |
| ii | 0.2 | Definition |
| 2 | 0.3 | Familiarisation |
| 3 | 0.4 | Abstract |
| 4 | 0.5 | Content |
| 8 | 0.6 | List of figures |
| 14 | 1 | Transcendent |
| | | Introduction |
| 15 | 1.1 | Theoretical premise |
| 16 | 1.1.1 | Art, communication, culture |
| 18 | 1.1.2 | The art of the present |
| 19 | 1.1.3 | In-between the city |
| 22 | 2 | Transpire |
| | | Problem statement |
| 23 | 2.1 | Re-organisation of space |
| 24 | 2.1.1 | The transitional context |
| 29 | 2.2 | Site |
| 29 | 2.2.1 | Site theoretical |
| 29 | 2.2.2 | Site practical |
| 30 | 2.3 | Program |
| 30 | 2.3.1 | Theoretical context as program generator |
| 31 | 2.3.1.1 | Needs, culture, cities |
| 32 | 2.3.1.2 | Directly Observed treatment |
| 32 | 2.3.1.3 | The client |
| 32 | 2.3.1.4 | Implementation |
| 34 | 2.3.2 | Physical context as program generator |
| 35 | 2.3.3 | Feasible context as program generator |

| Page | Chapter | Title |
|------|----------|---|
| 36 | 3 | Translate Context analysis Site analysis |
| 37 | 3.1 | Context analysis |
| 37 | 3.1.1 | Macro scale |
| 37 | 3.1.1.1 | Topography |
| 38 | 3.1.1.2 | The city past |
| 40 | 3.1.1.3 | The city present |
| 41 | 3.1.2 | Wider context of the site |
| 41 | 3.1.2.1 | Precinct scale |
| 43 | 3.1.2.2 | The framework |
| 51 | 3.1.2.3 | Influences on the wider context |
| 52 | 3.1.3 | Study area |
| 53 | 3.1.3.1 | Influences on the study area |
| 54 | 3.1.3.2 | Assumptions within the study area |
| 55 | 3.2 | Sosio-economic context |
| 55 | 3.3 | Institutional context |
| 57 | 3.4 | Historical context |
| 57 | 3.4.1 | History of the immediate context of the site |
| 58 | 3.4.2 | Heritage impact assessment |
| 59 | 3.5 | Site analysis |
| 59 | 3.5.1 | Scope of the analysis |
| 62 | 3.5.2 | Site elements |
| 75 | 3.5.3 | Macro climate |
| 75 | 3.5.4 | Micro climate |
| 77 | 3.6 | Constraints and possibilities |
| 79 | 3.6.1 | Constraints summarised |

| Page | Chapter | Title |
|------|----------|---|
| 80 | 4 | Transude Precedents |
| 81 | 4.1 | Theoretical precedents |
| 81 | 4.1.1 | Manson's Bend Chapel |
| 84 | 4.1.1 | Constitutional Court |
| 89 | 4.2 | Physical precedents |
| 89 | 4.2.1 | Conde Nast Cafeteria, New York |
| 91 | 4.2.2 | TV Studio Cafeteria for Televisa, Mexico City |
| 93 | 4.2.3 | X-ray department at King Edward Memorial Hospital, Ealing |
| 94 | 4.3 | Form, materials and elements |
| 94 | 4.3.1 | Competing elements |
| 96 | 4.3.2 | Confinement and Definition |
| 99 | 4.3.3 | Pretoria Regionalism |
| 100 | 4.3.4 | Environmental Elements |
| 104 | 5 | Transfigure Design development |
| 105 | 5.1 | Influences on the design development |
| 105 | 5.1.1 | Dwelling and Building |
| 107 | 5.1.2 | Christopher Alexander and Pattern Language |
| 108 | 5.1.3 | Developing a Pattern Language |
| 131 | 5.2 | Design development |
| 158 | 5.3 | Technical documentation |
| 184 | 6 | Transcribe |
| 185 | 6.1 | Conclusion |
| 187 | 6.2 | List of References |
| 190 | 6.3 | Appendix |
| 190 | 6.3.1 | Heritage Impact Assessment |
| 196 | 6.3.2 | Sustainable Building Assessment |

0 Transpose

Author
Author

0.1 Concept perspective April 2007
0.2 Collage with images of Pretoria

1 Transcendent

Author
Author
Photographer unknown, available:
<http://images.google.co.za/images/interstices>
Accessed on 4 April 2007
Artist unknown, available:
http://images.google.co.za/images/unfold_transition
Accessed on 4 April 2007

1.1 Illustrating diagrammatically the concept of the boundary
1.2 Illustrating diagrammatically the concept of a moment in transit
1.3 The concepts of interstices presented as rock and soil
1.4 "There is a place where there is no change and the transition envelopes the whole."

2 Transpire

City of Tshwane Integrated Transport plan 2004:17, edited by author
Author
City of Tshwane Integrated Transport plan 2004:18, edited by author
City of Tshwane Integrated Transport plan 2004:18, edited by author
City of Tshwane Integrated Transport plan 2004:19, edited by author
Author, inspired by Alexander's Pattern Language
Author, inspired by Alexander's Pattern Language
Author, inspired by Alexander's Pattern Language
Author
Author
Author
Author
Author
Author

2.1 Peak hour passengers by private vehicles around the inner city of Tshwane
2.2 Most of the transport interchanges are situated on the outside periphery of the CBD of Pretoria
2.3 Peak hour bus volumes towards the CBD of Pretoria
2.4 Peak hour passenger volumes by train
2.5 The main taxi routes towards the CBD competes with the main bus- and rail routs
2.6 Alexander propose an inverse of the traditional way of looking at public transportation lines
2.7 Alexander propose an inverse of the traditional way of looking at public transportation lines
2.8 Alexander propose an inverse of the traditional way of looking at public transportation lines
2.9 Position of the site in relation to the CBD of Tshwane
2.10 Diagrams illustrating the concept 'urban culture.'
2.11 The interdependence of human needs, culture and the urban environment
2.12 Diagram illustrating the process of program generation
2.13 & 2.14 Everyday activity on and around the site
2.14 Diagrammatic summary of the program, generated from the different contexts

3 Translate

Author
Author
Clive M Chipkin in Architecture of the Transvaal (169)
Author
City of Tshwane Municipality, edited by author
Author
Tshwane Inner City Development and Regeneration Strategy 2005, edited by author
Tshwane Inner City Development and Regeneration Strategy 2005, edited by author
Tshwane Inner City Development and Regeneration Strategy 2005, edited by author
Tshwane Inner City Development and Regeneration Strategy 2005, edited by author
Tshwane Inner City Development and Regeneration Strategy 2005, edited by author
Tshwane Inner City Development and Regeneration Strategy 2005, edited by author
Tshwane Inner City Development and Regeneration Strategy 2005, edited by author
Tshwane Inner City Development and Regeneration Strategy 2005, edited by author

3.1 Map indicating the site in relation to Johannesburg and the City of Tshwane
3.2 Maps indicating the site from city scale to immediate context
3.3 Map indicating black townships around the CBD of the City of Tshwane – 1910
3.4 Map indicating the position of site in relation to the northern and eastern suburbs of the City of Tshwane
3.5 Map indicating the precinct area in relation to the City of Tshwane
3.6 Precinct scale: Site as part of the Tshwane Inner City Development and Regeneration Strategy
3.7 The site as one of the main gateways into the city
3.8 The site as part of the proposed cultural circle
3.9 Defining the capital precinct
3.10 The site functioning as a gateway into the proposed Corridor
3.11 The site in relation to the proposed Tshwane crossing
3.12 The site shown as influential to the zone of urban regeneration
3.13 Movement around the CBD of the City of Tshwane

Author
City of Tshwane Integrated Transport plan 2004:9, edited by author
Author
Author
Department of Geography, University of Pretoria, edited by author
Author
City of Tshwane Municipality, edited by author
Heydenrych in Discover Pretoria [15]
Author, 28 February 2007
Author, 28 February 2007
Group project together with colleagues, edited by author
Department of Geography, University of Pretoria, edited by author
Author, 28 February 2007
Author, 28 February 2007
Author, 28 February 2007
Author
Author
Group project together with colleagues, edited by author
Author
Author
Author
Author
Author, 6 June 2007
Author, 6 June 2007
Author
Author
With permission form Marc Jooste, edited by author
Author
Author
Author, 28 February 2007
Author, 28 February 2007
Author
Author
Author
Author
With permission of Koos Senekal Architects, edited by author
With permission of Koos Senekal Architects, edited by author
With permission of Koos Senekal Architects, edited by author
Department of Geography, University of Pretoria, edited by author
Author
Author
Author

4 Transude

Timothy Hursley in Design like you give a damn
Timothy Hursley in Design like you give a damn
Timothy Hursley in Design like you give a damn
Timothy Hursley in Design like you give a damn
Author
Author
Author
Author
Angela Buckland in Light on a Hill
Angela Buckland in Light on a Hill
Angela Buckland in Light on a Hill

3.14 Influence from the north and east on the site
3.15 Population densities in the City of Tshwane
3.16 Most important institutional and cultural installations within the wider context of the site
3.17 Influence of the wider context on the study area
3.18 Site scale: Assumptions within the study area
3.19 Interdependence between city and user
3.20 Land uses and zoning within the study area
3.21 'Uniegebou Vanaf Prinshof , Pretoria 1925' by Hendrik Potgieter
3.22 Driving from Boom Street towards Dr. Savage road
3.23 Driving from Boom Street towards Dr. Savage road
3.24 Heritage impact assessment
3.25 Arial view of the site and intersection
3.26 North-eastern view towards the site
3.27 East-south view towards the intersection and the site
3.28 Eastern view towards the intersection and the site
3.29 Section through Boom Street illustrating existing street character
3.30 Section illustrating future character of Boom Street after the proposed Taxi Retail Park development
3.31 Diagram indicating the different land uses around the site
3.32 Section illustrating possible future character of Bloed Street
3.33 Section through Bloed Street illustrating existing street character
3.34 Section illustrating possible future character of Bloed Street
3.35 Section illustrating possible future character of Bloed Street
3.36 Typical European streetscapes: Views of streets in Paris, France
3.37 Typical European streetscapes: Views of streets in Paris, France
3.38 Section through the intersection
3.39 Sketches showing the concept of the 'relief zone'
3.40 Photograph of the intersection taken from the adjacent building.
3.41 Main street directions and one-ways
3.42 Axonometric model of the immediate context of the site, indicating the major roads
3.43 Photo of the taxi rank (February 2007) being the key generator of pedestrian activity around the site
3.44 Photo of the taxi rank (February 2007) being the key generator of pedestrian activity around the site
3.45 Existing bus and taxi routes around the site
3.46 Future bus and taxi routes around the site
3.47 Existing pedestrian circulation patterns around the site
3.48 Future pedestrian circulation patterns around the site
3.49 Artist impression of the new taxi facility in Bloed Street
3.50 Position of site in relation to the new development
3.51 Relocation of the existing taxi rank
3.52 The geological map of the City of Tshwane
3.53 Diagram illustrating the dominant constraints concluded from the site analysis
3.54 Diagram illustrating the possibilities concluded from the constraints of the site analysis
3.55 Concept sketches indicating the relationship between exposure and enclosure to city form

4.1 The chapel is always open, to provide a space for contemplation and respite from the heat
4.2 The sculptural glass skin gives the building an unanticipated appeal
4.3 At night the chapel acts like a beacon, signaling Mason's Bend to passerby.
4.4 View from inside the chapel
4.5 Early concept sketches exploring shelter vs. building
4.6 Connections between the diverse activities of the city
4.7 The image indicates the site and its surroundings as an area in need of densification
4.8 The Court at dusk
4.9 Looking from Hillbrow along the southern façade of the building towards Constitution Square
4.10 Eastern approach to the Court

Angela Buckland in Light on a Hill
Angela Buckland in Light on a Hill
Angela Buckland in Light on a Hill
Angela Buckland in Light on a Hill
Angela Buckland in Light on a Hill

Photographer unknown, available:

<http://images.google.co.za/images/africanvillages>

Accessed on 19 May 2007

Photographer unknown, available

<http://images.google.co.za/images/africanvillages>

Accessed on 19 May 2007

Author

Author

Author

Photographer unknown, available

<http://images.google.co.za/images/condenastecafeteria>

Accessed on 20 July 2007

Photographer unknown, available

<http://images.google.co.za/images/condenastecafeteria>

Accessed on 20 July 2007

Photographer unknown, available

<http://images.google.co.za/images/condenastecafeteria>

Accessed on 20 July 2007

Author

Author

Author

Author

Photographer unknown, available:

<http://images.google.co.za/images/TVStudioCafeteriaforTelevisa>

Accessed on 20 July 2007

Photographer unknown, available:

<http://images.google.co.za/images/TVStudioCafeteriaforTelevisa>

Accessed on 20 July 2007

Author

Author

Author

Author

Author

Author

Metric Hand Book and Design Data, edited by author

Photographer unknown, available:

<http://www.arcspace.com/architects/ten/nst/nst.html>

Accessed on 21 July 2007

Photographer unknown, available:

<http://www.arcspace.com/architects/ten/nst/nst.html>

Accessed on 21 July 2007

Photographer unknown, available:

<http://www.arcspace.com/architects/ten/nst/nst.html>

Accessed on 21 July 2007

Photographer unknown, available:

<http://www.arcspace.com/architects/ten/nst/nst.html>

Accessed on 21 July 2007

Author

Author

Author

- 4.11 Drawing showing the position of the court in relation to Constitution Square
- 4.12 Cross-section showing the direct relationship between Constitution Square, the raised entrance podium, the Foyer and the Court Chamber
- 4.13 Early concept drawings imagining everyday activity around the Court
- 4.14 Early concept drawings imagining everyday activity around the Court
- 4.15 Drawing showing the relationship between ideas of 'inside' and 'outside'. The foyer is intended to be as much an inside space as an outside space, its roof a canopy of clouds and leaves.
- 4.16 Traditional African villages, being defined by a border or the composition of the structures
- 4.17 Traditional African villages, being defined by a border or the composition of the structures
- 4.18 Sketch explaining the concept of 'inside' and 'outside'
- 4.19 Sketches showing the first concept of 'inside' and 'outside' as being used in the design investigation
- 4.20 The relationship between 'inside' and 'outside' as been used within the Constitutional Court, taken further within the design development
- 4.21 Interior views of the cafeteria
- 4.22 Interior views of the cafeteria
- 4.23 Interior views of the cafeteria
- 4.24 Ground floor plan
- 4.25 Spatial connectivity
- 4.26 Circulation
- 4.27 Diagram showing the circulation as a linear approach
- 4.28 Outside view of the cafeteria
- 4.29 Interior view of the dining area
- 4.30 Ground floor plan
- 4.31 Spatial interconnectivity
- 4.32 Circulation diagram
- 4.33 Diagram showing the circulation as a turn-around or circular approach
- 4.34 Spatial interconnectivity
- 4.35 Circulation
- 4.36 Ground floor plan of the x-ray department
- 4.37 View from inside the cylindrical shell towards entrance
- 4.38 Outside view towards building
- 4.39 View from inside the cylindrical shell towards the entrance
- 4.40 Outside view towards building
- 4.41 Diagram showing the spatial relation between the frame and the building
- 4.42 Concept sketches showing spatial relationship of the proposed design
- 4.43 Concepts illustrating confinement and definition

Photographer unknown, available:
<http://images.google.co.za/images/abstractart>

Accessed on 4 August 2007

Photographer unknown, available:
<http://images.google.co.za/images/abstractart>

Accessed on 4 August 2007

Photographer unknown, available:
<http://images.google.co.za/images/villasavoye>

Accessed on 5 August 2007

Design and Analysis (55)

Design and Analysis (56)

Source unknown, with permission from Chris Wilkinson

Source unknown, with permission from Chris Wilkinson

With permission from Yolanda van der Vyver

With permission from Yolanda van der Vyver

Photographer unknown, available:

<http://nedkahn.com/wind.html>

Accessed on 4 August 2007

Thomas Mayer, available:

<http://www.arcspace.com/architects/nouvel/agbar/agbar.html>

Accessed 26 July 2007

Photographer unknown, available:

<http://www.arcspace.com/books/Murcutt/index.htm>

Accessed 3 August 2007

Photographer unknown, available:

<http://www.arcspace.com/books/Murcutt/index.htm>

Accessed 3 August 2007

5 Transfigure

Introduced by Alexander in Pattern Language, redrawn by author

Introduced by Alexander in Pattern Language, redrawn by author

Author

Author

Introduced by Alexander in Pattern Language, redrawn by author

Author

Author

Author

Author

Introduced by Alexander in Pattern Language, redrawn by author

Author

Author

Introduced by Alexander in Pattern Language, redrawn by author

Author

Introduced by Alexander in Pattern Language, redrawn by author

Introduced by Alexander in Pattern Language, redrawn by author

Author

Introduced by Alexander in Pattern Language, redrawn by author

Author

Introduced by Alexander in Pattern Language, redrawn by author

Author

Introduced by Alexander in Pattern Language, redrawn by author

Author

Author

Author

4.44 In the abstract art, the line sometimes becomes the primary symbol of confinement and definition

4.45 In the abstract art, the line sometimes becomes the primary symbol of confinement and definition

4.46 Outside view of Villa Savoye

4.47 Exploded views of partitions and structural elements

4.48 Ground floor plan showing free forms of interior in relation to the strict ordering of the columns

4.49 The embassy of Finland, Stockholm 1993, by Kristian Gullichsen

4.50 University Library, Lleida, Spain, 1996, by Kristian Gullichsen

4.51 House Karl Jooste, Waterkloof Ridge, Architect: Karl Jooste, 1960's

4.52 House Stübgen, Waterkloof Ridge, Architect: Stübgen, 1966

4.53 - 4.59 Work of environmental artist Ned Kahn

4.60 - 4.63 Images Torre Agbar, Barcelona, Spain

4.64 Magney House, Bingie Bingie New South Wales

4.65 Simpson-Lee House, Mount Wilson New South Wales

5.1 Conceptual diagram showing the relationship between the different subcultures and where they meet

5.2 Conceptual diagram showing the relationship between the different subcultures and where they meet

5.3 Concept illustrated on city and site scale

5.4 Concept illustrated on city and site scale

5.5 Conceptual diagram showing the relationship between interchanges, stops and lines

5.6 Interchanges, stops and lines illustrated as concept within the CBD of Pretoria

5.7 Five stories or more

5.8 Four stories or less

5.9 Section through the design intervention

5.10 Pedestrian routes to pass through public nodes

5.11 The intersection itself will be treated as a public node

5.12 Drawing illustrating how, by treating the corners of each site as open space, will contribute to the node as successful public space

5.13 Sketches illustrating the concept intervention

5.14 Potential night spots centered around dining facilities

5.15 Sketches illustrating the concept intervention

5.16 Concept Pattern 41: Work Community

5.17 Section through the building showing the different uses

5.18 Alexander's illustration on the concept

5.19 Location of municipal clinics and hospitals around the CBD of Pretoria

5.20 Concept Pattern 88: Street Café

5.21 Sketch plan indicating the various different spaces within the cafeteria dining area and corner cafe

5.22 Sketch plan indicating the various different spaces within the cafeteria dining area and corner cafe

5.23 A pleasant bus stop with activities around

5.24 Location of potential bus stops in the design intervention, incorporated with additional facilities

5.25 First concept sketches exploring building complex footprint

5.26 Final building footprint

| | | |
|---|---------------|--|
| Author | 5.92 | Development of initial bulk form model (figure 5.94) |
| Author | 5.93 | Development of bulk form model 2 (figure 5.95) |
| Author | 5.94 | Bulk form models '1' and '2' |
| Author | 5.95 | Bulk form models '1' and '2' |
| Author | 5.96 | Development and aspects of the concept models |
| Author | 5.97 - 5.100 | Concept models 3 - May 2007 |
| Author | 5.101 | Basement plan - June 2007 |
| Author | 5.102 | Ground floor plan - June 2007 |
| Author | 5.103 | The internal 'corridor' was later replaced by building mass |
| Author | 5.104 | First floor plan - June 2007 |
| Author | 5.105 | Second floor plan - June 2007 |
| Author | 5.106 | Concept sketches exploring interaction between building and sidewalk |
| Author | 5.107 - 5.109 | Perspectives and views of the proposed building - June 2007 |
| Author | 5.110 & 5.111 | Views as approached from the north-eastern side |
| Author | 5.112 | View from inside of the cafeteria towards the intersection |
| Author | 5.113 | Interior views and perspectives |
| Author | 5.114 - 5.116 | Sketches illustrating everyday activity around the building within open public space |
| Author | 5.117 | First concept sections - June 2007 |
| Author | 5.118 | Concept sketches exploring potential structural solutions |
| Author | 5.119 | Conceptual sketches investigating alternative load bearing structures |
| Author | 5.120 & 5.21 | The work of Rem Koolhaas influential as subjected to folding planes |
| Photographer unknown, available: http://images.google.co.za/images/remkoolhaaseducatorium Accessed 6 August 2007 | | |
| Photographer unknown, in Santiago Calatrava, (Jodidio, P: 1997) | 5.122 & 5.23 | Santiago Calatrava: Marousi, Athens and City of Science, Spain. His work was chosen as alternative precedent after revision of the designer's initial concepts |
| Author | 5.124 - 5.26 | Concept models 4 - July 2007 |
| Author | 5.127 | Conceptual sketches investigating alternative load bearing structures |
| Author | 5.128 & 5.29 | Concept models 4 - July 2007 |
| Author | 5.130 | The sketches explore the relation between controlled space and random enclosure |
| Author | 5.131 & 5.132 | The sketches is part of the experimental model in figure on the following page |
| Author | 5.133 - 5.136 | Concept models 4 - July 2007 |
| Author | 5.137 - 5.142 | Concept model 5 |
| Author | 5.143 | Drawings – Site plan wider context |
| Author | 5.144 | Drawings – Site plan immediate context |
| Author | 5.145 | Drawings – Basement plan |
| Author | 5.146 | Drawings – Ground floor plan |
| Author | 5.147 | Drawings – First floor plan |
| Author | 5.148 | Drawings – Second floor plan |
| Author | 5.149 | Drawings – Roof plan |
| Author | 5.150 | Section A-A |
| Author | 5.151 | Section B-B |
| Author | 5.152 | Section C-C |
| Author | 5.153 | Section D-D |
| Author | 5.154 | Section E-E |
| Author | 5.155 | Sectional elevations |
| Author | 5.156 | and all onward - various technical detail drawings |