

# Proceedings of the International Ocean Discovery Program

## Volume 357

### Atlantis Massif Serpentinization and Life

Expedition 357 of the mission-specific drilling platform

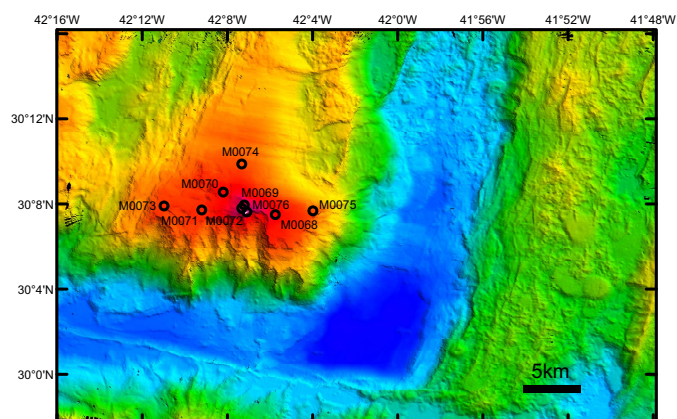
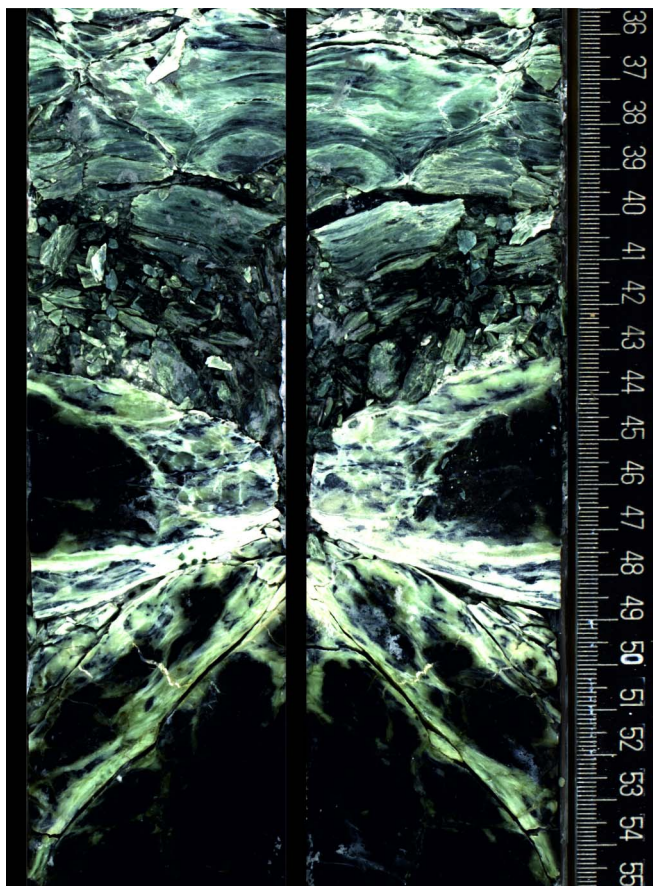
from and to Southampton, United Kingdom

Sites M0068–M0076

26 October–11 December 2015

#### Volume authorship

Früh-Green, G.L., Orcutt, B.N., Green, S.L., Cotterill, C., and the Expedition 357 Scientists



## Publisher's notes

This publication was prepared by the European Consortium for Ocean Research Drilling (ECORD) Science Operator (ESO) and Texas A&M University (TAMU) as an account of work performed under the International Ocean Discovery Program (IODP). Funding for IODP is provided by the following international partners:

National Science Foundation (NSF), United States  
Ministry of Education, Culture, Sports, Science and Technology (MEXT), Japan  
European Consortium for Ocean Research Drilling (ECORD)  
Ministry of Science and Technology (MOST), People's Republic of China  
Korea Institute of Geoscience and Mineral Resources (KIGAM)  
Australia-New Zealand IODP Consortium (ANZIC)  
Ministry of Earth Sciences (MoES), India  
Coordination for Improvement of Higher Education Personnel (CAPES), Brazil

Any opinions, findings, and conclusions or recommendations expressed in this publication are those of the author(s) and do not necessarily reflect the views of the participating agencies or TAMU.

IODP mission-specific platform data are accessible at <http://iodp.wdc-mare.org>. If you cannot access this site or need additional data, please contact Data Librarian, WDC-MARE/PANGAEA, University of Bremen, Marum, Leobener Strasse, 28359 Bremen, Germany. Tel: (40) 421-218-65592; Fax: (49) 421-218-65505.

A complete set of the logging data collected during the expedition is available at <http://brg.ldeo.columbia.edu/logdb>. If you have problems downloading the data, wish to receive additional logging data, or have questions regarding the data, please contact Database Administrator, Borehole Research Group, Lamont-Doherty Earth Observatory of Columbia University, PO Box 1000, 61 Route 9W, Palisades NY 10964, USA. Tel: (845) 365-8343; Fax: (845) 365-3182; Email: [logdb@ldeo.columbia.edu](mailto:logdb@ldeo.columbia.edu).

Supplemental data were provided by the authors and may not conform to IODP publication formats.

ESO expedition photos are the property of IODP and are in the public domain.

Some core photographs have been tonally enhanced to better illustrate particular features of interest. High-resolution images are available upon request.

Cover photograph shows a unit of talc-amphibole-chlorite schist overlying a unit of serpentized dunite with sheared zones of talc-tremolite metasomatism (Core 357-M0072B-6R-1). Photo credit: IODP ESO.

## Copyright

Except where otherwise noted, this work is licensed under a Creative Commons Attribution License ([http://creativecommons.org/licenses/by/4.0/deed.en\\_US](http://creativecommons.org/licenses/by/4.0/deed.en_US)). Unrestricted use, distribution, and reproduction are permitted, provided the original author and source are credited.

Examples of how to cite this volume or part of this volume are available at <http://publications.iodp.org/proceedings/357/357title.html#bib>.

## ISSN

World Wide Web: 2377-3189

## Publication date

4 February 2017

## Contents

### Expedition reports

#### Chapters

##### [Expedition 357 summary](#)

G.L. Früh-Green et al.

##### [Expedition 357 methods](#)

G.L. Früh-Green et al.

##### [Eastern sites](#)

G.L. Früh-Green et al.

##### [Central sites](#)

G.L. Früh-Green et al.

##### [Western sites](#)

G.L. Früh-Green et al.

##### [Northern sites](#)

G.L. Früh-Green et al.

#### Core descriptions

Visual core descriptions (VCDs) and thin sections are combined into PDF files for each region. The entire set of core images in PDF is available in the IMAGES directory.

##### [Eastern sites](#)

Visual core descriptions · Thin sections

##### [Central sites](#)

Visual core descriptions · Thin sections

##### [Western sites](#)

Visual core descriptions · Thin sections

##### [Northern sites](#)

Visual core descriptions · Thin sections

#### Supplementary material

Supplementary material for the Volume 357 expedition reports includes core description logs in Microsoft Excel, handwritten VCDs in PDF, scan images in JPG format, thin section images in TIFF and JPG formats, XRD data in Microsoft Excel and CSV format, drill videos in AVI format, geochemistry data in Microsoft Excel and JPG format, microbiology data in JPG format, and sensor data in PDF and a variety of native formats. A full list of directories can be found in SUPP\_MAT in the volume zip folder or on the [Supplementary material for Volume 357 expedition reports](#) web page.

### Expedition research results

#### Data reports

Titles are available in [HTML](#).

#### Syntheses

Titles are available in [HTML](#).

### Drilling location maps

A site map showing the drilling locations for this expedition and maps showing the drilling locations of all International Ocean Discovery Program (IODP), produced using QGIS (<http://www.qgis.org>), and Integrated Ocean Drilling Program, Ocean Drilling Program (ODP), and Deep Sea Drilling Project (DSDP) expeditions, produced using Generic Mapping Tools (GMT) of Paul Wessel and Walter H.F. Smith (<http://gmt.soest.hawaii.edu>), are available in PDF.

#### [IODP Expedition 357 site map](#)

[IODP map](#) (Expeditions 349–357 and 359)

[Integrated Ocean Drilling Program map](#) (Expeditions 301–348)

[ODP map](#) (Legs 100–210)

[DSDP map](#) (Legs 1–96)

## Acknowledgments

This expedition would not have been possible without the offshore participation of European Consortium for Ocean Research Drilling (ECORD) Science Operator personnel and technical representatives Holger Kuhlmann, Luzie Schneiders, Hans-Joachim Wallrabe-Adams, and Alex Wülbers; Operations Manager David Smith; and the entire crew of the *RRS James Cook*. We also appreciate the hard work of the seabed drill teams—Rodrigue Akkari, Marcus Bergenthal, Siefke Froehlich, Alan Gillies, Joseph Hothersall, Kai Kaszemeik, Steffen Klar, Thorsten Klein, Marcus Kuhnert, Garry McGowan, Kees Noorlander, Iain Pheasant, Werner Schmidt, and Apostolos Tsiligiannis—led by Tim Freudenthal and Michael Wilson. We acknowledge the contribution of the *RRS James Cook* to the expedition by the Natural Environment Research Council (UK) and planning support by staff from the National Marine Facilities Sea Systems (UK), in particular Jeremy Evans. We are indebted to the preexpedition guidance of Steve D'Hondt, Dennis Graham, and Mark Lever on the use of perfluoromethylcyclohexane tracer, as well as to Doug Connelly and Kate Peel for graciously provisioning the expedition with a gas chromatograph equipped with an electron capture detector (GC-ECD) for offshore tracer analysis. We acknowledge Tamara Bumberger, Rolf Pedersen, and Ingunn Thorseth for supporting preexpedition tracer testing and for provisioning the science party with a gas chromatograph equipped with a pulsed discharge ionization detector (GC-PDD) for offshore dissolved gas analysis. We are indebted to Matthew Cooper for provisioning the expedition with low organic gloves at the last minute, to Laura Bilenker for processing all of the shipboard bulk rock geochemistry samples, and to Damon Teagle for provisioning the offshore party with hand lenses. Nan Xiao provided expert assistance with postexpedition sampling at the Kochi Core Center (Japan), graciously supported by Fumio Inagaki and the Japanese ocean drilling program, and Katherine Hickok and Chris Thornton provided assistance with microbiological sample processing. We thank Marcus Motz from Develogic (Hamburg, Germany) for his efforts to design and construct the borehole plug. We also thank the entire support team at the Bremen Core Repository (Germany), led by Ursula Röhl, for their efforts during the Onshore Science Party, as well as the publications staff at the *JOIDES Resolution* Science Operator at Texas A&M University (USA) and David McInroy with the ECORD Science Operator for overall support. We are also thankful for the support of proponents of Atlantis Massif drilling who were unable to participate in the expedition: Muriel Andreani, John Baross, Stefano Bernasconi, Michael Cheadle, Adélie Delacour, Marguerite Godard, Philippe Gouze, Nils Holm, Benoit Ildefonse, Magnus Ivarsson, Deborah Kelley, Christopher MacLeod, Anthony Morris, and Roger Searle.

## Foreword

The International Ocean Discovery Program (IODP) represents the latest incarnation of almost five decades of scientific ocean drilling excellence and is generally accepted as the most successful international collaboration in the history of the Earth sciences. IODP builds seamlessly on the accomplishments of previous phases: the Deep Sea Drilling Project, Ocean Drilling Program, and Integrated Ocean Drilling Program. The 2013–2023 IODP Science Plan (*Illuminating Earth's Past, Present, and Future*) defines four themes and thirteen challenges for this decade of scientific ocean drilling that are both of fundamental importance in understanding how the Earth works and of significant relevance to society as the Earth changes, at least in part in response to anthropogenic forcing. This phase of IODP represents a renewed level of international collaboration in bringing diverse drilling platforms and strategies to increasing our understanding of climate and ocean change, the deep biosphere and evolution of ecosystems, connections between Earth's deep processes and surface manifestations, and geologically induced hazards on human timeframes.

The *Proceedings of the International Ocean Discovery Program* presents the scientific and engineering results of IODP drilling projects, expedition by expedition. As in the preceding Integrated Ocean Drilling Program, expeditions in the new IODP are conducted by three implementing organizations, each providing a different drilling capability. These are the US Implementing Organization (USIO; through September 2014) and the *JOIDES Resolution* Science Operator (JRSO; as of October 2014), providing the leased commercial vessel *JOIDES Resolution* for riserless drilling operations; JAMSTEC's Center for Deep Earth Exploration (CDEX), providing the drillship *Chikyu* for riser and occasional riserless operations; and the European Consortium for Ocean Research Drilling (ECORD) Science Operator (ESO), providing "mission-specific" platforms (MSPs) for expeditions that extend the IODP operational range where neither drillship is suitable, for example, in polar environments and in shallow waters. Scheduling decisions for each capability are made by three independent Facility Boards, each of which includes scientists, operators, and platform funding partners: the *JOIDES Resolution* Facility Board (JRFB), *Chikyu* IODP Board (CIB), and ECORD Facility Board (EFB). At the beginning of the new IODP, the three Facility Boards agreed to utilize Publication Services at the USIO and now the JRSO for production of all expedition *Proceedings* volumes and reports.

The new IODP differs from prior scientific ocean drilling programs in that it has neither a central management organization nor commingled funding for program-wide activities. Yet, this phase of IODP retains a fundamental integrative structural element: a "bottom-up" evaluation of all proposals for drilling expeditions by a single advisory structure composed of scientists representing all international program partners. International scientists may submit drilling proposals to the Science Support Office; all submitted proposals are then evaluated by a Science Evaluation Panel in the context of the Science Plan.

The new IODP also has a second internationally integrative level for high-level discussion and consensus-building: the IODP Forum. The Forum is charged with assessing program-wide progress toward achieving the Science Plan. At present, IODP involves 26 international financial partners, including the United States, Japan, an Australia/New Zealand consortium (ANZIC), Brazil, China, India, South Korea, and the eighteen members of ECORD (Austria, Belgium, Canada, Denmark, Finland, France, Germany, Ireland, Israel, Italy, the Netherlands, Norway, Poland, Portugal, Spain, Sweden, Switzerland, and the United Kingdom). This enhanced membership in the new IODP represents a remarkable level of international collaboration that remains one of the greatest ongoing strengths of scientific ocean drilling.

James A. Austin, Jr.  
Chair, IODP Forum

# International Ocean Discovery Program

*JOIDES Resolution* Science Operator

Website: <http://iodp.tamu.edu>

## IODP JRSO

International Ocean Discovery Program  
Texas A&M University  
1000 Discovery Drive  
College Station TX 77845-9547  
USA  
Tel: (979) 845-2673; Fax: (979) 845-4857  
Email: [information@iodp.tamu.edu](mailto:information@iodp.tamu.edu)

## IODP JRSO Curation and Laboratories

IODP Gulf Coast Repository (GCR)  
Texas A&M University  
1000 Discovery Drive  
College Station TX 77845-9547  
USA  
Tel: (979) 845-8490; Fax: (979) 845-1303  
Email: [rumford@iodp.tamu.edu](mailto:rumford@iodp.tamu.edu)

European Consortium for Ocean Research Drilling, Science Operator (ESO)

Website: <http://www.eso.ecord.org>

## IODP ESO Coordinator: Science, Logistics, and Operations

British Geological Survey  
The Lyell Centre  
Research Avenue South  
Edinburgh EH14 4AP  
United Kingdom  
Tel: (44) 131-667-1000; Fax: (44) 131-668-4140  
Email: [eso@bgs.ac.uk](mailto:eso@bgs.ac.uk)

## IODP ESO Curation and Laboratories

IODP Bremen Core Repository (BCR)  
Center for Marine Environmental Sciences (MARUM)  
University of Bremen  
Leobener Strasse  
28359 Bremen  
Germany  
Tel: (49) 421-218-65560; Fax: (49) 421-218-98-65560  
Email: [bcr@marum.de](mailto:bcr@marum.de)

## IODP ESO Petrophysics

European Petrophysics Consortium  
Department of Geology  
University of Leicester  
Leicester LE1 7RH  
United Kingdom  
Tel: (44) 116-252-3611; Fax: (44) 116-252-3918  
Email: [sjd27@leicester.ac.uk](mailto:sjd27@leicester.ac.uk)

Japan Agency for Marine-Earth Science and Technology (JAMSTEC)

Website: <http://www.jamstec.go.jp/chikyue>

## IODP Japan Science Operator

Center for Deep Earth Exploration (CDEX)  
Japan Agency for Marine-Earth Science and Technology  
Yokohama Institute for Earth Sciences  
3175-25 Showa-machi  
Kanazawa-ku, Yokohama  
Kanagawa 236-0001  
Japan  
Tel: (81) 45-778-5643; Fax: (81) 45-778-5704  
Email: [cdex@jamstec.go.jp](mailto:cdex@jamstec.go.jp)

## IODP Japan Curation and Laboratories

IODP Kochi Institute for Core Sample Research (KCC)  
Japan Agency for Marine-Earth Science and Technology  
200 Monobe Otsu  
3175-25 Showa-machi  
Nankoku City, Kochi 783-8502  
Japan  
Tel: (81) 88-864-6705; Fax: (81) 88-878-2192  
Email: [kcc.contact@jamstec.go.jp](mailto:kcc.contact@jamstec.go.jp)

## Expedition 357 participants\*

### Expedition 357 scientists

**Gretchen L. Früh-Green<sup>†</sup>**

**Co-Chief Scientist (Metamorphic Petrologist)**

Institute of Geochemistry and Petrology  
ETH Zürich  
Clausiusstrasse 25, NW E 76.2  
CH-8092 Zürich  
Switzerland  
[frueh-green@erdw.ethz.ch](mailto:frueh-green@erdw.ethz.ch)

**Beth N. Orcutt<sup>†</sup>**

**Co-Chief Scientist (Microbiologist)**

Bigelow Laboratory for Ocean Sciences  
60 Bigelow Drive  
PO Box 380  
East Boothbay ME 04544  
USA  
[borcutt@bigelow.org](mailto:borcutt@bigelow.org)

**Sophie Green**

**Expedition Project Manager**

ECORD Science Operator  
British Geological Survey  
The Lyell Centre  
Research Avenue South  
Edinburgh EH14 4AP  
United Kingdom  
[soph@bgs.ac.uk](mailto:soph@bgs.ac.uk)

**Carol Cotterill<sup>†</sup>**

**Expedition Project Manager**

ECORD Science Operator  
British Geological Survey  
The Lyell Centre  
Research Avenue South  
Edinburgh EH14 4AP  
United Kingdom  
[cjcott@bgs.ac.uk](mailto:cjcott@bgs.ac.uk)

**Sally Morgan<sup>†</sup>**

**Petrophysics Staff Scientist**

European Petrophysics Consortium  
Department of Geology  
University of Leicester  
University Road  
Leicester LE1 7RH  
United Kingdom  
[sm509@le.ac.uk](mailto:sm509@le.ac.uk)

**Norikatsu Akizawa**

**Igneous Petrologist**

Kanazawa University  
Department of Earth Sciences  
Kakuma  
Kanazawa, Ishikawa  
920-1192  
Japan  
[nori.plus.x@gmail.com](mailto:nori.plus.x@gmail.com)

Present address:

Kyoto University  
Graduate School of Human and Environmental Studies  
Yashida—Nihoumatsu  
Sakyo, Kyoto  
6068501  
Japan  
[akizawa.norikatsu.2x@kyoto-u.ac.jp](mailto:akizawa.norikatsu.2x@kyoto-u.ac.jp)

**Gaye Bayrakci<sup>†</sup>**

**Physical Properties Specialist/Geophysicist**

Ocean and Earth Science  
National Oceanography Centre Southampton  
University of Southampton  
Southampton  
United Kingdom  
[G.Bayrakci@soton.ac.uk](mailto:G.Bayrakci@soton.ac.uk)

**Jan-Hinrich Behrmann**

**Physical Properties Specialist**

GEOMAR Helmholtz Centre for Ocean Research Kiel  
Wischhofstrasse 1-3  
24148 Kiel  
Germany  
[jbehrmann@geomar.de](mailto:jbehrmann@geomar.de)

**Emilio Herrero-Bervera**

**Paleomagnetist**

University of Hawaii at Manoa  
SOEST-Hawaii Institute of Geophysics and Planetology (HIGP)  
1680 East West Road POST 716  
Honolulu HI 96822  
USA  
[herrero@soest.hawaii.edu](mailto:herrero@soest.hawaii.edu)

**Chiara Boschi**

**Metamorphic Petrologist**

Institute of Geosciences and Earth Resources—CNR  
Via Moruzzi 1  
Pisa 56124  
Italy  
[c.boschi@igg.cnr.it](mailto:c.boschi@igg.cnr.it)

\*Addresses at time of expedition, except where updated by participants.

†Participated in shipboard and shore-based operations.

#Participated in shipboard operations only.

**William Brazelton****Microbiologist**

University of Utah  
257 South 1400 East, Room 201  
Salt Lake City UT 84112-0840  
USA

[william.brazelton@utah.edu](mailto:william.brazelton@utah.edu)

**Mathilde Cannat****Structural Geologist**

Equipe de Géosciences Marines  
Institut de Physique du Globe de Paris  
Sorbonne Paris Cité  
Univ Paris Diderot  
UMR 7154 CNRS.1, rue Jussieu  
75238 Paris Cedex 05  
France

[cannat@ipgp.fr](mailto:cannat@ipgp.fr)

**Kristina G. Dunkel****Physical Properties Specialist**

Physics of Geological Processes  
University of Oslo  
Sem Sælands vei 24  
0371 Oslo  
Norway

[kristina.dunkel@geo.uio.no](mailto:kristina.dunkel@geo.uio.no)

**Javier Escartin****Structural Geologist**

CNRS UMR 7154, IPGP  
1 rue Jussieu  
75005 Paris  
France

[escartin@ipgp.fr](mailto:escartin@ipgp.fr)

**Michelle Harris****Metamorphic Petrologist**

Plymouth University  
109 Fitzroy Building  
Drake Circus  
Plymouth  
Devon PL4 8AA  
United Kingdom

[michelle.harris@plymouth.ac.uk](mailto:michelle.harris@plymouth.ac.uk)

**Kirsten Hesse****Igneous Petrologist**

GeoZentrum Nordbayern, Lehrstuhl für Mineralogie  
Friedrich-Alexander-University Erlangen-Nuremberg  
Schlossgarten 5a  
91054 Erlangen  
Germany

[kirsten.hesse@fau.de](mailto:kirsten.hesse@fau.de)

**Barbara John****Structural Geologist**

Department of Geology and Geophysics  
University of Wyoming  
Laramie WY 82071  
USA

[bjohn@uwyo.edu](mailto:bjohn@uwyo.edu)

**Susan Q. Lang<sup>†</sup>****Organic Geochemist**

Department of Earth and Ocean Sciences  
University of South Carolina  
701 Sumter Street EWS 617  
Columbia SC 29208  
USA

[slang@geol.sc.edu](mailto:slang@geol.sc.edu)

**Marvin Lilley<sup>†</sup>****Fluid and Gas Geochemist**

School of Oceanography  
University of Washington  
Box 355351  
Seattle WA 98195  
USA

[lilley@uw.edu](mailto:lilley@uw.edu)

**Hai-Quan Liu****Geochemist**

Key Laboratory of Marginal Sea Geology  
Guangzhou Institute of Geochemistry  
Chinese Academy of Sciences  
Guangzhou  
China

[liuhaiquan@gig.ac.cn](mailto:liuhaiquan@gig.ac.cn)

**Lisa Mayhew****Geochemist**

Department of Geological Sciences  
University of Colorado—Boulder  
2200 Colorado Avenue  
UCB 399  
Boulder CO 80309  
USA

[lisa.mayhew@colorado.edu](mailto:lisa.mayhew@colorado.edu)

**Andrew McCaig****Structural Geologist**

School of Earth and Environment  
University of Leeds  
University of Leeds  
Leeds LS2 9JT  
United Kingdom

[a.m.mccaig@leeds.ac.uk](mailto:a.m.mccaig@leeds.ac.uk)

**Benedicte Menez****Geomicrobiologist**

Institut de Physique du Globe de Paris  
1 rue Jussieu  
75238 Paris Cedex 05  
France

[menez@ipgp.fr](mailto:menez@ipgp.fr)

**Yuki Morono<sup>†</sup>****Microbiologist**

Japan Agency for Marine-Earth Science and Technology  
Kochi Institute for Core Sample Research  
Monobe B200  
Nankoku, Kochi  
783-8502  
Japan

[morono@jamstec.go.jp](mailto:morono@jamstec.go.jp)

**Marianne Quéménéur<sup>†</sup>**

**Microbiologist**

Mediterranean Institute of Oceanography (MIO), UM110  
163 avenue de Luminy  
13288 Marseille Cedex 9  
France  
[marianne.quemeneur@ird.fr](mailto:marianne.quemeneur@ird.fr)

**Amila Sandaruwan Ratnayake**

**Organic Geochemist**

Shimane University  
Faculty of Science and Engineering  
1060 Nishikawatsu  
Matsue  
690-8504 Shimane  
Japan  
[amilageopera@gmail.com](mailto:amilageopera@gmail.com)

**Stéphane Rouméjon**

**Metamorphic Petrologist**

ETH Zurich  
Institute of Geochemistry and Petrology  
Sonneggstrasse 5  
8092 Zurich  
Switzerland  
[stephane.roumejon@erdw.ethz.ch](mailto:stephane.roumejon@erdw.ethz.ch)

**Matthew Schrenk<sup>†</sup>**

**Microbiologist**

Michigan State University  
288 Farm Lane, Room 144  
East Lansing MI 48824  
USA  
[schrenkm@msu.edu](mailto:schrenkm@msu.edu)

**Esther Schwarzenbach**

**Metamorphic Petrologist**

Institute of Geological Sciences  
Freie Universität Berlin  
Malteserstrasse 74-100  
12249 Berlin  
Germany  
[esther.schwarzenbach@fu-berlin.de](mailto:esther.schwarzenbach@fu-berlin.de)

**Katrina Twing<sup>†</sup>**

**Microbiologist**

Department of Biology  
University of Utah  
257 South 1400 East, Room 201  
Salt Lake City UT 84112-0840  
USA  
[katrina.twing@utah.edu](mailto:katrina.twing@utah.edu)

**Dominique Weis**

**Geochemist**

Earth, Ocean and Atmospheric Sciences  
University of British Columbia  
2020-2207 Main Mall  
Vancouver BC V6T-1Z4  
Canada  
[dweis@eos.ubc.ca](mailto:dweis@eos.ubc.ca)

**Scott Andrew Whattam**

**Igneous Petrologist**

Korea University  
Department of Earth and Environmental Sciences  
Seoul 02-841  
Republic of Korea  
[whattam@korea.ac.kr](mailto:whattam@korea.ac.kr)

**Morgan Williams**

**Igneous Petrologist**

Research School of Earth Sciences  
The Australian National University  
Building 142  
Mills Road  
Acton ACT 2601  
Australia  
[Morgan.williams@anu.edu.au](mailto:Morgan.williams@anu.edu.au)

**Rui Zhao**

**Microbiologist**

Centre for Geobiology, Department of Biology  
University of Bergen  
Allegaten 41  
5007 Bergen  
Norway  
[rui.zhao@bio.uib.no](mailto:rui.zhao@bio.uib.no)

## Operational and technical staff

ECORD Science Operator personnel and technical representatives

**David Smith\***

Offshore Operations Manager

**Ursula Röhl**

Laboratory and Curation Manager/Onshore Operations Manager

**Gareth Carter**

Expedition Project Manager in-training (EPM in-training)

**Walter Hale**

Core Curator

**Thomas Frederichs**

ESO Paleomagnetist

**Rhonda Kappler**

Publications Specialist (JRSO)

**Brit Kockisch**

LECO Operator

**Holger Kuhlmann\***

Core Curator/Assistant Laboratory Manager

**Erwan Le Ber**

EPC Petrophysics Technician

**Vera Lukies**

ESO Petrophysics Technician

\*Participated in shipboard and shore-based operations.



**Mary Mowat**  
ESO Database Manager

**Silvana Pape**  
Geochemistry Technician

**Laurence Phillipot**  
EPC Petrophysics Technician

**Luzie Schnieders\***  
ESO Geochemist

**Janet Sherwin**  
EPC Petrophysics Technician

**Christoph Vogt**  
XRD Specialist

**Hans-Joachim Wallrabe-Adams\***  
ESO Data Manager

**Alex Wülbers\***  
Core Curator/Logistics

BCR/MARUM, University of Bremen (temporary student assistants)

**Roles included core handling, core splitting, sampling, data entry, and catering**

**Tobias Beck**

**Robert Büssing**

**Lars Feddeck**

**Lara Gebhard**

**Lara Jacobi**

**Verena Junge**

**Anna Quatmann-Hense**

**Nina Rohlf**

**Alexander Rösner**

**Jana Schroeder**

**Christopher Vogel**

**Julian Wecht**

**Jessica Zarnowski**

**Marc Zehnich**

British Geological Survey (BGS) Rock Drill 2 (RD2)<sup>†</sup>

**Iain Pheasant**  
RD2 shift leader

**Michael Wilson**  
RD2 shift leader

**Rodrigue Akkari**  
RD2 Team

**Garry McGowan**  
RD2 Team

**Joseph Hothersall**  
RD2 Team

**Apostolos Tsiligiannis**  
RD2 Team

**David Baxter**  
RD2 mobilization/demobilization only

**Keith Gibson**  
RD2 mobilization/demobilization only

**Alan Gillies**  
RD2 mobilization/demobilization only

MARUM, University of Bremen MeBo Seafloor Drill Rig<sup>†</sup>

**Tim Freudenthal**  
MeBo Team Leader

**Markus Bergenthal**  
MeBo Team

**Siefke Froehlich**  
MeBo Team

**Kai Kaszemeik**  
MeBo Team

**Steffen Klar**  
MeBo Team

**Thorsten Klein**  
MeBo Team

**Kees Noorlander**  
MeBo Team

**Werner Schmidt**  
MeBo Team

**Marcus Kuhnert**  
MeBo Team

<sup>†</sup>Participated in shipboard operations only.

## Royal Research Ship (RRS) *James Cook*<sup>‡</sup>

**John Leask**  
Master

**Stewart Mackay**  
Chief Officer

**Nicholas Norrish**  
Second Officer

**Samuel Vargas**  
Third Officer

**John Haughton**  
Head Chef

**Walter Link**  
Chef

**Peter Robinson**  
Steward

**Carl Piper**  
Assistant Steward

**Robert Brett**  
Chief Engineer

**Graham Bullimore**  
Purser

**Noel Doherty**  
Third Engineer

## IODP Publication Services staff<sup>‡</sup>

**Douglas Cummings**  
Graphics Specialist II

**Gudelia (“Gigi”) Delgado**  
Senior Publications Coordinator

**Patrick H. Edwards**  
Production Specialist IV

**Jaime A. Gracia**  
Supervisor of Production and Graphics

**Jenni Hesse**  
Editor III

**Rhonda Kappler**  
Graphics Specialist III

**Shana C. Lewis**  
Editor III

**Ginny Lowe**  
Reports Coordinator

**Gary Slater**  
Third Engineer

**Christopher Kemp**  
Second Engineer

**Paul Damerall**  
Electrical Technical Officer

**Jarrold Welton**  
Able Seaman

**Shane Drury**  
Able Seaman

**Nicholas Byrne**  
Able Seaman

**Gerard Millar**  
Able Seaman

**Steven Duncan**  
Petty Officer Deck

**John Macdonald**  
Chief Petty Officer Science

**Andrew Maclean**  
Chief Petty Officer Deck

**Andrew Moore**  
Systems Support Technician

**Amy McWilliams**  
Editor IV

**Lorri Peters**  
Manager of Publication Services

**Kenneth Sherar**  
Production Specialist III

**Alyssa Stephens**  
Graphics Specialist III

**Crystal Wolfe**  
Production Specialist III

**Jean Wulfson**  
Graphics Specialist III

**Ann Yeager**  
Distribution Specialist

<sup>‡</sup>At time of publication.

# Expedition-related bibliography\*

## IODP publications

### Scientific Prospectus

Früh-Green, G.L., Orcutt, B.N., and Green, S., 2015. *Expedition 357 Scientific Prospectus: Atlantis Massif Serpentinization and Life*. International Ocean Discovery Program.  
<http://dx.doi.org/10.14379/iodp.sp.357.2015>

### Preliminary Report

Früh-Green, G.L., Orcutt, B.N., Green, S., Cotterill, C., and the Expedition 357 Scientists, 2016. *Expedition 357 Preliminary Report: Atlantis Massif Serpentinization and Life*. International Ocean Discovery Program.  
<http://dx.doi.org/10.14379/iodp.pr.357.2016>

### Proceedings volume

Früh-Green, G.L., Orcutt, B.N., Green, S.L., Cotterill, C., and the Expedition 357 Scientists, 2016. *Atlantis Massif Serpentinization and Life*. Proceedings of the International Ocean Discovery Program, 357: College Station, TX (International Ocean Discovery Program).  
<http://dx.doi.org/10.14379/iodp.proc.357.2017>

### Expedition reports

Früh-Green, G.L., Orcutt, B.N., Green, S.L., Cotterill, C., Morgan, S., Akizawa, N., Bayrakci, G., Behrmann, J.-H., Boschi, C., Brazelton, W.J., Cannat, M., Dunkel, K.G., Escartin, J., Harris, M., Herrero-Bervera, E., Hesse, K., John, B.E., Lang, S.Q., Lilley, M.D., Liu, H.-Q., Mayhew, L.E., McCaig, A.M., Menez, B., Morono, Y., Quéméneur, M., Rouméjon, S., Sandaruwan Ratnayake, A., Schrenk, M.O., Schwarzenbach, E.M., Twing, K.I., Weis, D., Whattam, S.A., Williams, M., and Zhao, R., 2017. Expedition 357 summary. In Früh-Green, G.L., Orcutt, B.N., Green, S.L., Cotterill, C., and the Expedition 357 Scientists, *Atlantis Massif Serpentinization and Life*. Proceedings of the International Ocean Discovery Program, 357: College Station, TX (International Ocean Discovery Program).  
<http://dx.doi.org/10.14379/iodp.proc.357.101.2017>

Früh-Green, G.L., Orcutt, B.N., Green, S.L., Cotterill, C., Morgan, S., Akizawa, N., Bayrakci, G., Behrmann, J.-H., Boschi, C., Brazelton, W.J., Cannat, M., Dunkel, K.G., Escartin, J., Harris, M., Herrero-Bervera, E., Hesse, K., John, B.E., Lang, S.Q., Lilley, M.D., Liu, H.-Q., Mayhew, L.E., McCaig, A.M., Menez, B., Morono, Y., Quéméneur, M., Rouméjon, S., Sandaruwan Ratnayake, A., Schrenk, M.O., Schwarzenbach, E.M., Twing, K.I., Weis, D., Whattam, S.A., Williams, M., and Zhao, R., 2017. Expedition 357 methods. In Früh-Green, G.L., Orcutt, B.N., Green, S.L., Cotterill, C., and the Expedition 357 Scientists, *Atlantis Massif Serpentinization and Life*. Proceedings of the International Ocean Discovery Program, 357: College Station, TX (International Ocean Discovery Program).  
<http://dx.doi.org/10.14379/iodp.proc.357.102.2017>

Früh-Green, G.L., Orcutt, B.N., Green, S.L., Cotterill, C., Morgan, S., Akizawa, N., Bayrakci, G., Behrmann, J.-H., Boschi, C., Brazelton, W.J., Cannat, M., Dunkel, K.G., Escartin, J., Harris, M., Herrero-Bervera, E., Hesse, K., John, B.E., Lang, S.Q., Lilley, M.D., Liu, H.-Q., Mayhew, L.E., McCaig, A.M., Menez, B., Morono, Y., Quéméneur, M., Rouméjon, S., Sandaruwan Ratnayake, A., Schrenk, M.O., Schwarzenbach, E.M., Twing, K.I., Weis, D., Whattam, S.A., Williams, M., and Zhao, R., 2017. Eastern

sites. In Früh-Green, G.L., Orcutt, B.N., Green, S.L., Cotterill, C., and the Expedition 357 Scientists, *Atlantis Massif Serpentinization and Life*. Proceedings of the International Ocean Discovery Program, 357: College Station, TX (International Ocean Discovery Program).

<http://dx.doi.org/10.14379/iodp.proc.357.103.2017>

Früh-Green, G.L., Orcutt, B.N., Green, S.L., Cotterill, C., Morgan, S., Akizawa, N., Bayrakci, G., Behrmann, J.-H., Boschi, C., Brazelton, W.J., Cannat, M., Dunkel, K.G., Escartin, J., Harris, M., Herrero-Bervera, E., Hesse, K., John, B.E., Lang, S.Q., Lilley, M.D., Liu, H.-Q., Mayhew, L.E., McCaig, A.M., Menez, B., Morono, Y., Quéméneur, M., Rouméjon, S., Sandaruwan Ratnayake, A., Schrenk, M.O., Schwarzenbach, E.M., Twing, K.I., Weis, D., Whattam, S.A., Williams, M., and Zhao, R., 2017. Central sites. In Früh-Green, G.L., Orcutt, B.N., Green, S.L., Cotterill, C., and the Expedition 357 Scientists, *Atlantis Massif Serpentinization and Life*. Proceedings of the International Ocean Discovery Program, 357: College Station, TX (International Ocean Discovery Program).

<http://dx.doi.org/10.14379/iodp.proc.357.104.2017>

Früh-Green, G.L., Orcutt, B.N., Green, S.L., Cotterill, C., Morgan, S., Akizawa, N., Bayrakci, G., Behrmann, J.-H., Boschi, C., Brazelton, W.J., Cannat, M., Dunkel, K.G., Escartin, J., Harris, M., Herrero-Bervera, E., Hesse, K., John, B.E., Lang, S.Q., Lilley, M.D., Liu, H.-Q., Mayhew, L.E., McCaig, A.M., Menez, B., Morono, Y., Quéméneur, M., Rouméjon, S., Sandaruwan Ratnayake, A., Schrenk, M.O., Schwarzenbach, E.M., Twing, K.I., Weis, D., Whattam, S.A., Williams, M., and Zhao, R., 2017. Western sites. In Früh-Green, G.L., Orcutt, B.N., Green, S.L., Cotterill, C., and the Expedition 357 Scientists, *Atlantis Massif Serpentinization and Life*. Proceedings of the International Ocean Discovery Program, 357: College Station, TX (International Ocean Discovery Program).

<http://dx.doi.org/10.14379/iodp.proc.357.105.2017>

Früh-Green, G.L., Orcutt, B.N., Green, S.L., Cotterill, C., Morgan, S., Akizawa, N., Bayrakci, G., Behrmann, J.-H., Boschi, C., Brazelton, W.J., Cannat, M., Dunkel, K.G., Escartin, J., Harris, M., Herrero-Bervera, E., Hesse, K., John, B.E., Lang, S.Q., Lilley, M.D., Liu, H.-Q., Mayhew, L.E., McCaig, A.M., Menez, B., Morono, Y., Quéméneur, M., Rouméjon, S., Sandaruwan Ratnayake, A., Schrenk, M.O., Schwarzenbach, E.M., Twing, K.I., Weis, D., Whattam, S.A., Williams, M., and Zhao, R., 2017. Northern sites. In Früh-Green, G.L., Orcutt, B.N., Green, S.L., Cotterill, C., and the Expedition 357 Scientists, *Atlantis Massif Serpentinization and Life*. Proceedings of the International Ocean Discovery Program, 357: College Station, TX (International Ocean Discovery Program).

<http://dx.doi.org/10.14379/iodp.proc.357.106.2017>

### Supplementary material

Früh-Green, G.L., Orcutt, B.N., Green, S.L., Cotterill, C., and the Expedition 357 Scientists, 2017. Supplementary material,  
<http://dx.doi.org/10.14379/iodp.proc.357supp.2017>. Supplement to Früh-Green, G.L., Orcutt, B.N., Green, S.L., Cotterill, C., and the Expedition 357 Scientists, *Atlantis Massif Serpentinization and Life*. Proceedings of the International Ocean Discovery Program, 357: College Station, TX (International Ocean Discovery Program).  
<http://dx.doi.org/10.14379/iodp.proc.357.2017>

\*The Expedition-related bibliography is continually updated online (<http://publications.iodp.org/proceedings/357/357title.html#bib>). Please send updates to [PubCrd@iodp.tamu.edu](mailto:PubCrd@iodp.tamu.edu).