



ARTICLE

Received 22 Jul 2016 | Accepted 3 Jan 2017 | Published 17 Feb 2017

DOI: [10.1038/ncomms14467](https://doi.org/10.1038/ncomms14467)

OPEN

Upper critical field reaches 90 tesla near the Mott transition in fulleride superconductors

Y. Kasahara¹, Y. Takeuchi², R.H. Zadik³, Y. Takabayashi⁴, R.H. Colman³, R.D. McDonald⁵, M.J. Rosseinsky⁶, K. Prassides^{4,7} & Y. Iwasa^{2,8}

Controlled access to the border of the Mott insulating state by variation of control parameters offers exotic electronic states such as anomalous and possibly high-transition-temperature (T_c) superconductivity. The alkali-doped fullerides show a transition from a Mott insulator to a superconductor for the first time in three-dimensional materials, but the impact of dimensionality and electron correlation on superconducting properties has remained unclear. Here we show that, near the Mott insulating phase, the upper critical field H_{c2} of the fulleride superconductors reaches values as high as ~ 90 T—the highest among cubic crystals. This is accompanied by a crossover from weak- to strong-coupling superconductivity and appears upon entering the metallic state with the dynamical Jahn-Teller effect as the Mott transition is approached. These results suggest that the cooperative interplay between molecular electronic structure and strong electron correlations plays a key role in realizing robust superconductivity with high- T_c and high- H_{c2} .

¹Department of Physics, Kyoto University, Kyoto 606-8502, Japan. ²Quantum-Phase Electronics Center (QPEC) and Department of Applied Physics, University of Tokyo, Tokyo 113-8656, Japan. ³Department of Chemistry, Durham University, Durham DH1 3LE, UK. ⁴WPI—Advanced Institute for Materials Research, Tohoku University, Sendai 980-8577, Japan. ⁵NHMFLL, Los Alamos National Laboratory, Los Alamos, New Mexico 87545, USA. ⁶Department of Chemistry, University of Liverpool, Liverpool L69 7ZD, UK. ⁷Japan Science and Technology Agency (JST), ERATO Isobe Degenerate π -Integration Project, Tohoku University, Sendai 980-8577, Japan. ⁸RIKEN Center for Emergent Matter Science (CEMS), Wako, Saitama 351-0198, Japan. Correspondence and requests for materials should be addressed to Y.K. (email: ykasahara@scphys.kyoto-u.ac.jp) or to Y.I. (email: iwasa@ap.t.u-tokyo.ac.jp).

The interplay between superconductivity and electron correlations is one of the central issues in condensed matter physics. Superconducting (SC) materials based on Mott insulators, such as two-dimensional (2D) cuprates¹ and organic charge-transfer salts², are model platforms that have been extensively studied thus far. A dome-like dependence of the SC transition temperature T_c as a function of tuning parameters, such as carrier doping and pressure, has been discussed as a fingerprint of unconventional superconductivity³. Recent physical and chemical pressure studies of Cs_3C_{60} have revealed that the family of cubic fullerides A_3C_{60} (A: alkali metal), where superconductivity emerges from the Mott insulating state driven by dynamical intramolecular Jahn–Teller (JT) distortions and strong Coulomb repulsion, is a new example of superconductors that show a dome-like SC phase diagram as a function of unit-cell volume V (refs 4–9). This suggests the importance of strong electron correlation to SC mechanisms¹⁰ and the need for further treatment beyond conventional framework of theory¹¹. Recent study has revealed a crossover in the normal state from the conventional Fermi liquid to a nontrivial metallic state where JT distortions persist (JT metal)^{9,12}. There, localized electrons coexist with itinerant electrons microscopically and heterogeneously.

The dependence of the upper critical field H_{c2} on T_c is relevant to the understanding of the dome-like SC phase because H_{c2} is determined by the coherence length (the size of the Cooper pair) as well as the strength of the pairing potential. Therefore, H_{c2} is also important to understand the underlying mechanism of the

superconductivity. However, for the fullerides, H_{c2} as a function of V has not as yet been determined due to the very large H_{c2} and the need for high pressure to access superconductivity in Cs_3C_{60} .

Here we report measurements of H_{c2} using a pulsed magnetic field in $\text{Rb}_x\text{Cs}_{3-x}\text{C}_{60}$, where superconductivity appears near the Mott transition even at ambient pressure⁹. In proximity to the Mott transition, H_{c2} is enhanced up to ~ 90 T, which is the highest among cubic superconductors. We uncovered that H_{c2} and the pairing strength increase concomitantly with increasing lattice volume near the Mott transition, suggesting that molecular characteristics as well as electron correlations play important roles for realizing superconductivity with high- T_c and high- H_{c2} in molecular materials.

Results

Temperature dependence of upper critical field. H_{c2} of the fulleride superconductors (Fig. 1a) $\text{Na}_2\text{CsC}_{60}$, K_3C_{60} , and $\text{Rb}_x\text{Cs}_{3-x}\text{C}_{60}$ ($0 < x \leq 3$), has been measured by a radiofrequency technique in pulsed magnetic fields¹³ up to 62 T (see Methods). In $\text{Rb}_x\text{Cs}_{3-x}\text{C}_{60}$ with $x \leq 1$, the dynamical JT distortions (Fig. 1b) persist down to low temperature and coexist with the metallic state, and superconductivity emerges from this JT metal state ($V_{\text{max}} < V < V_{\text{cr}}$, in Fig. 1c). Figure 2 shows temperature (T) variations of frequency shift Δf as a function of the magnetic field H for $\text{Rb}_x\text{Cs}_{3-x}\text{C}_{60}$ ($x = 2, 0.75$, and 0.35) (see also Supplementary Fig. 1). The T dependence of H_{c2} , $H_{c2}(T)$, was determined as a point at which Δf intercepts the normal-state

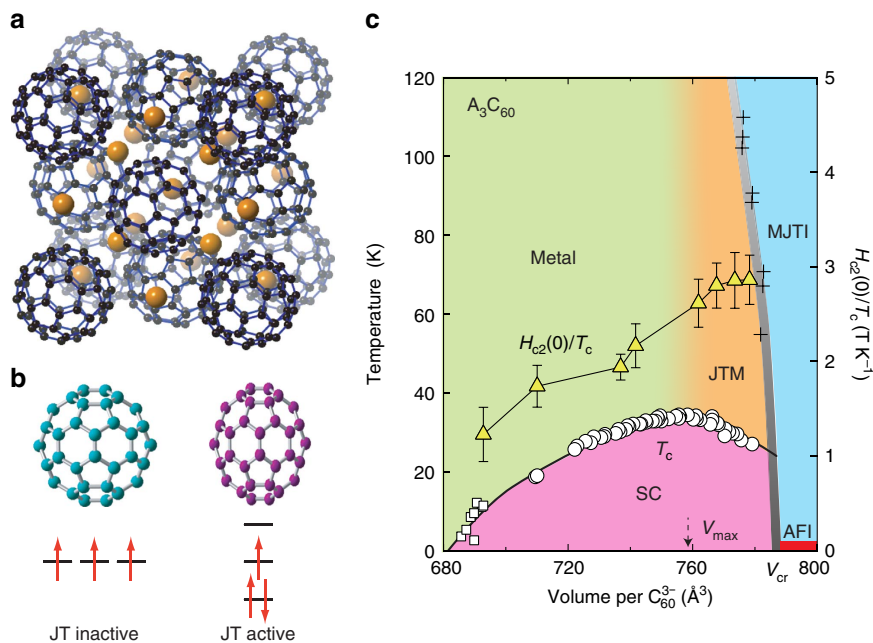


Figure 1 | Crystal structure and electronic phase diagram of fcc fullerides. (a) Crystal structure of fcc A_3C_{60} . Orange and black spheres represent A and C atoms, respectively. The C_{60}^{3-} anions adopt two orientations related by 90° rotation about the [100] axis. Only one is shown at each site. (b) Schematic structures of C_{60}^{3-} anions and molecular t_{1u} orbitals. At low V , C_{60}^{3-} anions are isotropic, and t_{1u} orbitals are triply degenerate. At large V , dynamical JT distortions give rise to threefold splitting of the t_{1u} orbitals. (c) Electronic phase diagram of cubic fullerides. Squares and circles are the superconducting (SC) transition temperature T_c for f.c.c. C_{60}^{3-} anion packings with $Pa\bar{3}$ symmetry and $Fm\bar{3}m$ symmetry, respectively. In fcc- Cs_3C_{60} at ambient pressure, an electron-correlation-driven insulating state (Mott-Jahn-Teller insulator, MJTI) appears, which is accompanied by an intramolecular dynamical Jahn-Teller (JT) effect distorting the C_{60}^{3-} anions and stabilizing the low-spin ($S = 1/2$) states that give rise to an antiferromagnetic insulating (AFI) state at low temperatures. In the metallic regime, gradient shading from green to orange schematically illustrates a crossover from the conventional metal to unusual metallic state where JT distortions persist, which we define as the JT metal (JTM) state. The grey line represents the MJTI-to-JTM crossover line, where the crossover temperatures (crosses) were obtained from X-ray powder diffraction, nuclear magnetic resonance spectroscopy, and infrared spectroscopy⁹. The ratio of upper critical field at $T = 0$ and T_c , $H_{c2}(0)/T_c$ (yellow triangles), shows an enhancement in the JTM regime. Error bars represent the s.d. in the values of $H_{c2}(0)$ estimated from the least-squares fits of equation (1) to $H_{c2}(T)$ data.

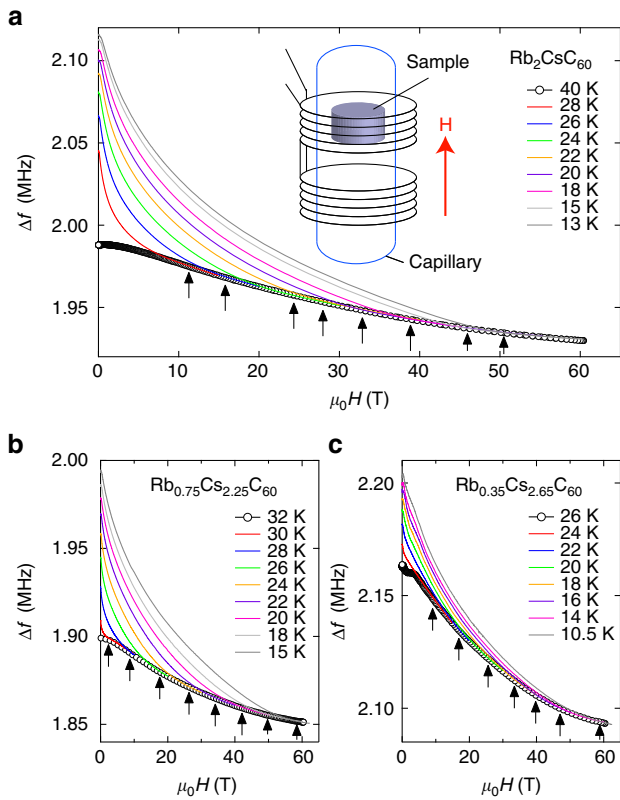


Figure 2 | Determination of upper critical fields. Frequency shift (Δf) as a function of magnetic field for $\text{Rb}_x\text{Cs}_{3-x}\text{C}_{60}$ with (a) $x = 2$, (b) 0.75, and (c) 0.35 at selected temperatures. Open circles are Δf taken at $T > T_c$ as a normal-state background signal. The arrows indicate $H_{c2}(T)$ determined from the point deviating from the background signal. Inset in a shows a schematic of the experimental set-up. The sample in a capillary was inserted in one coil of the pair wound clockwise and anti-clockwise to compensate induced voltages that are generated during the field pulse.

background (arrows in Fig. 2). $H_{c2}(T)$ curves for A_3C_{60} are plotted in Fig. 3a,b for $V \leq V_{\max}$ and $V_{\max} < V < V_{\text{cr}}$ in the proximity of the Mott transition, respectively. $H_{c2}(T)$ increases linearly with decreasing T near T_c and has a tendency to saturate at low temperatures. No obvious upturn of $H_{c2}(T)$ is found in any of the samples measured, implying that $H_{c2}(T)$ can be understood within a simple single-band picture despite the multiband nature of the triply degenerate t_{1u} orbitals of C_{60}^{3-} anions, in contrast to MgB_2 and iron pnictides where multiband and multigap behaviour with upturn or quasilinear T dependence down to $T \sim 0$ is commonly observed.

Volume dependence. In spin-singlet superconductors, H_{c2} is determined by two distinct effects, i.e., the orbital and the Pauli paramagnetic effect. The orbital limit and Pauli limit are given by $H_{c2}^{\text{orb}}(0) = 0.69 T_c |dH_{c2}/dT|_{T=T_c} = \Phi_0 / 2\pi \xi_{\text{GL}}^2$ and $H_P = \Delta_0 / \sqrt{2} \mu_B$, respectively (Φ_0 , ξ_{GL} , Δ_0 , and μ_B are the flux quantum, Ginzburg-Landau (GL) coherence length, superconducting gap and Bohr magneton, respectively)^{14,15}. In a weak-coupling BCS superconductor, the Pauli limit is $H_P^{\text{BCS}} [T] = 1.84 T_c [K]$. A simple estimation from $H_{c2}^{\text{orb}}(0)$ gives $\xi_{\text{GL}} = 1.8\text{--}4.6$ nm (Supplementary Table 1), which is comparable to the lattice constant. It should be noted that the fulleride superconductors are in the dirty limit, $\ell \lesssim \xi_0$ (ℓ and ξ_0 are the mean free path and Pippard coherence length, respectively), as demonstrated by transport and optical measurements^{16,17}. The orientational disorder of the C_{60}^{3-} anions

can account for the short ℓ , which is comparable to the intermolecular separation. The relation $\xi_{\text{GL}} = 0.85 \sqrt{\xi_0 \ell}$ in the dirty limit, where $\xi_0 = \hbar v_F / \pi \Delta_0$ and $m^* v_F = \hbar k_F = \hbar (\frac{3\pi^2 N}{V})^{1/3}$ (v_F , m^* , k_F , and N are the Fermi velocity, effective mass, Fermi momentum, and number of electrons per C_{60} , respectively) for the parabolic band approximation yield $H_{c2}^{\text{orb}}(0) = 0.22 \frac{\Phi_0 \Delta_0 m^* (V/N)^{1/3}}{\hbar^2 \ell}$. In the extreme cases ($H_{c2}^{\text{orb}} \gg H_P$ or $H_{c2}^{\text{orb}} \ll H_P$), $H_{c2}(0)$ is determined solely by H_{c2}^{orb} or H_P . However, when these two quantities are comparable, $H_{c2}(T)$ can be described by the extended WHH formula¹⁴, which considers both the orbital and Pauli paramagnetic effects as well as spin-orbit scattering,

$$\ln\left(\frac{1}{t}\right) = \left(\frac{1}{2} + \frac{i\lambda_{\text{so}}}{4\gamma}\right) \psi\left(\frac{1}{2} + \frac{\bar{h} + \frac{1}{2}\lambda_{\text{so}} + i\gamma}{2t}\right) + \left(\frac{1}{2} - \frac{i\lambda_{\text{so}}}{4\gamma}\right) \psi\left(\frac{1}{2} + \frac{\bar{h} + \frac{1}{2}\lambda_{\text{so}} - i\gamma}{2t}\right) - \psi\left(\frac{1}{2}\right), \quad (1)$$

where $t = T/T_c$, $\bar{h} = 0.281 H_{c2}(T) / H_{c2}^{\text{orb}}(0)$, $\gamma = \sqrt{(\alpha \bar{h})^2 - (\lambda_{\text{so}}/2)^2}$, $\alpha = \sqrt{2} H_{c2}^{\text{orb}}(0) / H_P$, ψ is the digamma function, and λ_{so} is the spin-orbit scattering constant. With fixed $H_{c2}^{\text{orb}}(0)$, finite α reduces $H_{c2}(0)$, but it recovers toward the original value with increasing λ_{so} , since spin-orbit scattering suppresses the Pauli paramagnetic effect.

$H_{c2}^{\text{orb}}(0)$ was estimated from the initial slope of $H_{c2}(T)$ since the Pauli paramagnetic effect is not relevant near T_c (Supplementary Note 1; Supplementary Fig. 2; and Supplementary Table 1). Then, $H_{c2}(T)$ curves were fitted with H_P and λ_{so} as fitting parameters. As shown by the solid lines in Fig. 3a,b, $H_{c2}(T)$ curves are well described by equation (1). Figure 3c shows $H_{c2}(T)$ normalized by $T_c |dH_{c2}/dT|_{T=T_c}$ as a function of T/T_c . The normalized $H_{c2}(T)$ curves collapse into a single curve except for $\text{Na}_2\text{CsC}_{60}$, implying that the parameters α and λ_{so} are unchanged in a wide V region of the phase diagram, resulting in $(\alpha, \lambda_{\text{so}}) = (1.5, 4.4)$. Figure 3d displays the evolution of $H_{c2}(0)$ as a function of V , together with H_P^{BCS} . $H_{c2}(0)$ reaches as high as 88 T in $\text{Rb}_x\text{Cs}_{3-x}\text{C}_{60}$ with $x \leq 1$ ($V \geq V_{\max}$) very close to the Mott transition. Moreover, $H_{c2}(0)$ is clearly larger than H_P^{BCS} at $V > V_{\max}$, and the difference between $H_{c2}(0)$ and H_P^{BCS} becomes pronounced with increasing V , although T_c is almost unchanged near the Mott transition.

Discussion

$H_{c2}(0)$ values reaching ~ 90 T are remarkably high for 3D materials. Typical examples of 3D superconductors are cubic Nb_3Sn ($H_{c2}(0) = 30$ T, $T_c = 18$ K), which is well known as a material for a SC magnet¹⁸, and $\text{Ba}_{1-x}\text{K}_x\text{BiO}_3$ ($H_{c2}(0) = 32$ T, $T_c = 28$ K)¹⁹. MgB_2 exhibits strong anisotropy ($H_{c2}(0) = 49$ T and 34 T parallel to the ab plane and c axis, respectively, $T_c = 39$ K)¹⁸ due to its anisotropic electronic structure. $H_{c2}(0)$ of the fullerides is even higher than that of recently discovered H_3S superconductors with likely a cubic structure ($H_{c2}(0) \approx 70$ T, $T_c = 203$ K)²⁰ despite its much higher T_c . In 2D systems under in-plane applied fields, the orbital effect is quenched and higher H_{c2} can be expected. Very large H_{c2} compared with low T_c has been demonstrated in ion-gated MoS_2 ($H_{c2}(0) = 52$ T, $T_c = 9.7$ K)^{21,22} and monolayer NbSe_2 ($H_{c2}(0) = 32$ T, $T_c = 3.0$ K)²³. In the bulk materials, the in-plane H_{c2} of the cuprates is exceptionally high at above 100 T. However, H_{c2} is no longer a thermodynamic transition line, but a crossover line due to thermal fluctuations. Contrastingly, H_{c2} in pnictides with $T_c \approx 30$ K is as large as that of fullerides²⁴. Therefore, our results highlight the uniquely high H_{c2} measured in the fulleride superconductors that are cubic, and thus, 3D.

To understand the underlying mechanisms for the evolution of $H_{c2}(0)$, we estimated unknown parameters that determine H_P and H_{c2}^{orb} (Supplementary Fig. 1), that is, Δ_0 and the product of parameters in the normal state $m^* / \ell N^{1/3}$. Δ_0 can be directly

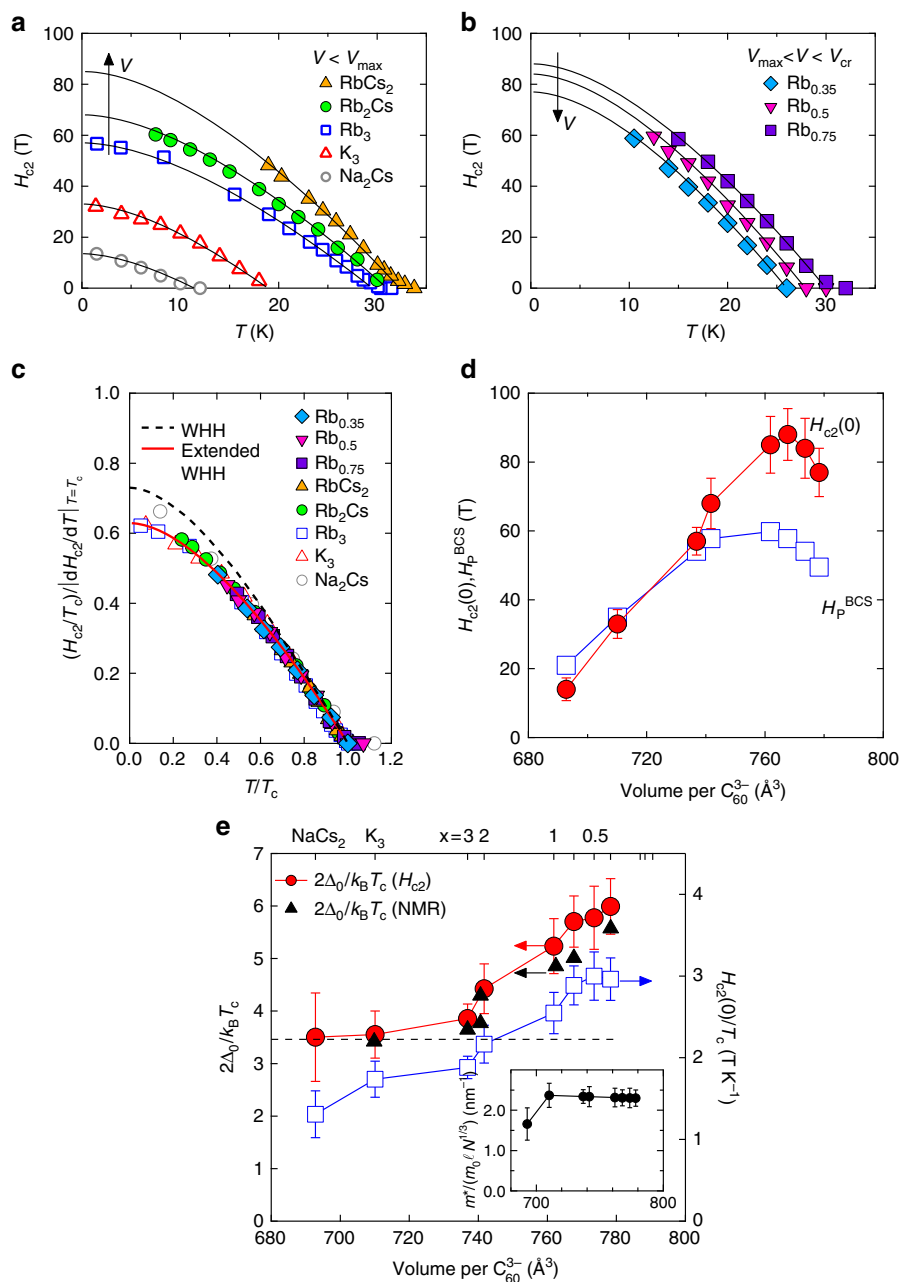


Figure 3 | Upper critical field in fullerene superconductors. Temperature dependence of the upper critical field for (a) $V \leq V_{max}$ and for (b) $V_{max} < V < V_{cr}$. The solid lines represent fits using equation (1). (c) Normalized H_{c2} , $H_{c2}/(T_c |dH_{c2}/dT|_{T=T_c})$, as a function of normalized temperature T/T_c . The solid and dashed lines represent calculated $H_{c2}(T)$ using the extended WHH formula (equation (1)) with $\alpha = 1.5$ and $\lambda_{s0} = 4.4$ and the conventional WHH formula in the dirty limit, respectively. (d) $H_{c2}(0)$, obtained from fits using equation (1), are plotted as a function of volume per C_{60}^{3-} anions. Error bars represent s.d. of the fit to $H_{c2}(T)$ curves. Conventional BCS values of the Pauli limiting field H_p^{BCS} are also shown. (e) Evolution of $2\Delta_0/k_B T_c$ and $H_{c2}(0)/T_c$ with approaching to the Mott transition. Error bars on $2\Delta_0/k_B T_c$ and $H_{c2}(0)/T_c$ are calculated from the s.d. in the values of $H_{c2}(0)$ estimated from the least-squares fits of equation (1) to $H_{c2}(T)$ data. $2\Delta_0/k_B T_c$ obtained from NMR measurements is taken from ref. 9. Inset shows V dependence of $m^*/m_0 \ell N^{1/3}$ derived using $H_{c2}^{orb}(0)$, Δ_0 , and V . Error bars are calculated from the s.d. in the values of $H_{c2}(0)$ estimated from the least-squares fits of equation (1) to $H_{c2}(T)$ data.

estimated from H_p . In Fig. 3e, the V dependences of $2\Delta_0/k_B T_c$, which is related to the strength of the pairing interaction, and $m^*/m_0 \ell N^{1/3}$ (m_0 is the bare electron mass) are shown. At low V , $2\Delta_0/k_B T_c$ is comparable to the BCS weak-coupling limit value of 3.52. In contrast with the dome-shaped T_c , $2\Delta_0/k_B T_c$ continuously increases with increasing V and reaches values as large as 6, indicating a crossover from weak- to strong-coupling superconductivity on approaching the Mott transition. This is in good agreement with the previous nuclear magnetic resonance results for $\text{Rb}_x\text{Cs}_{3-x}\text{C}_{60}$ at ambient pressure⁹ and for both

fcc- and A15- Cs_3C_{60} under pressure^{25,26}, implying universal behaviour in the fullerides. On the other hand, $m^*/m_0 \ell N^{1/3}$ is almost constant, indicating that both H_p/T_c and $H_{c2}^{orb}(0)/T_c$ are solely proportional to $2\Delta_0/k_B T_c$. These results lead to the conclusion that the enhancement of $H_{c2}(0)$ is dominated by the strong-coupling effect developing near the Mott transition.

We here recall $H_{c2}(0)$ of other families of high- T_c or strongly correlated superconductors, i.e., cuprates, organic κ -(ET)₂X, and pnictides^{24,27–31}, having a dome-like SC phase and a proximate antiferromagnetic phase. In Fig. 4, $H_{c2}(0)/T_c$ is displayed as a

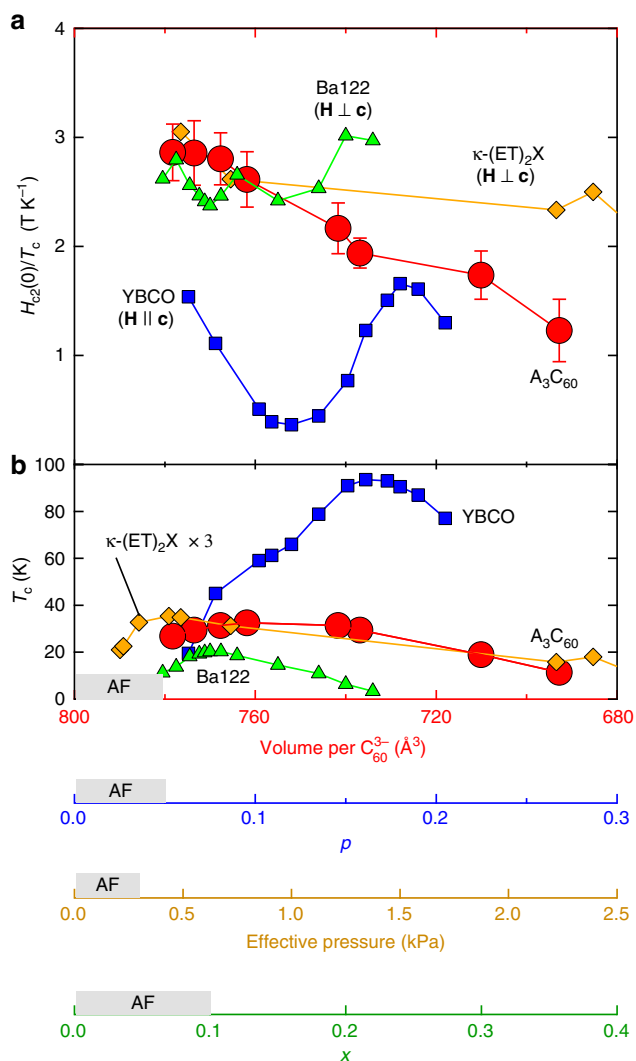


Figure 4 | Comparison of upper critical field and T_c as a function of control parameters in high- T_c superconductors. Variations of (a) $H_{c2}(0)/T_c$ and (b) T_c in high- T_c superconductors, including fullerides A_3C_{60} , cuprates $YBa_2Cu_3O_y$ (YBCO) (ref. 27), iron-pnictides $BaFe_{2-x}Ni_xAs_2$ (ref. 24), and organic charge-transfer salts κ -(BEDT-TTF) $_2$ X (X = Cu(NCS) $_2$ and Cu[N(CN) $_2$]Br) (refs 28–30), plotted as a function of control parameters, i.e., lattice volume per C_{60}^{3-} (V), hole concentration (p), Ni content (x), and effective pressure measured from κ -(BEDT-TTF) $_2$ Cu[N(CN) $_2$]Cl (ref. 31). Error bars on $H_{c2}(0)/T_c$ for fullerides represent the s.d. in the values of $H_{c2}(0)$ estimated from the least-squares fits of equation (1) to $H_{c2}(T)$ data.

function of the relevant tuning parameter for each materials family. We show $H_{c2}(0)$ for the in-plane field ($\mathbf{H} \perp \mathbf{c}$), where the Pauli paramagnetic effect is dominating, in κ -(ET) $_2$ X and pnictides but show $H_{c2}(0)$ for the out-of-plane field ($\mathbf{H} \parallel \mathbf{c}$) in cuprates since there are no reliable estimates of $H_{c2}(0)$ for $\mathbf{H} \perp \mathbf{c}$. A remarkable feature of the fullerides is that $H_{c2}(0)/T_c$ appears to be strongly enhanced at $x \leq 1$, where the JT metal phase emerges (Fig. 1c), with retaining nearly optimal T_c and $H_{c2}(0)$ values near the Mott transition. This is in marked contrast to the pnictides and cuprates. In the pnictides, $H_{c2}(0)/T_c$ is almost constant across the SC dome. This is ascribed to the variation of Δ_0 , which linearly scales with T_c (ref. 32), implying constant coupling strength. Moreover, in pnictides, T_c and $H_{c2}(0)$ are strongly reduced upon decreasing doping, associated with the appearance of the antiferromagnetic phase. Non-monotonic behaviour in cuprates appears with mass enhancement near $p = 0.08$ and 0.18,

which originates from phase competition between superconductivity and Fermi-surface reconstruction or charge-density-wave order²⁷. This is distinct from the continuous evolution of $H_{c2}^{orb}(0)$ in the fullerides (Supplementary Fig. 2), suggesting the absence of such competing states. In κ -(ET) $_2$ X, there is no competing phase near the Mott transition and the molecular degrees of freedom are not relevant to the superconductivity in contrast to the fullerides. Moreover, the SC pairing is most likely mediated by purely electronic interaction, in contrast to the fullerides, where there is considerable controversy because of comparable energy scales in the electron–phonon and electron–electron interactions^{33,34}. κ -(ET) $_2$ X shows qualitatively similar behaviour with the strong-coupling effects near the antiferromagnetic phase³⁵. However, the enhancement of $H_{c2}(0)/T_c$ is much weaker than that in the fullerides. Therefore, the steep enhancement of $H_{c2}(0)/T_c$ and $2\Delta_0/k_B T_c$ upon entering the JT metal phase cannot be explained solely by the electron correlation effect, highlighting the uniqueness of fullerides among the high- T_c or strongly correlated superconductors. We also emphasize that it is difficult to reconcile the strong-coupling effect with the electron–phonon coupling alone²⁵. Our results establish the importance of both molecular characteristics, absent in the atom-based superconductors, involving the dynamical JT effect and the resulting renormalization of the electronic structure and electron correlation effects for both the high- T_c and the high- H_{c2} in the fullerides, as supported by the recent theoretical calculations³³. This provides a new perspective on realizing robust superconductivity with high T_c and H_{c2} in molecular materials.

Methods

Sample synthesis and characterization. Fullerene superconductors Na_2CsC_{60} , K_3C_{60} , and $Rb_xCs_{3-x}C_{60}$ ($0 < x \leq 3$) were synthesized by solid-vapor reaction method as described in ref. 9. The samples used here were identical to those in ref. 9. For $Rb_xCs_{3-x}C_{60}$ with $x = 0.5, 1$, and 2, our samples correspond to $Rb_{0.5}Cs_{2.5}C_{60}$ (Sample I), $RbCs_2C_{60}$ (Sample I), and Rb_2CsC_{60} (Sample II) in ref. 9, respectively. The samples were characterized by synchrotron X-ray powder diffraction and magnetization measurements. The phase fraction of the fcc phase was larger than 70% and typical shielding fraction was $\sim 90\%$.

Measurements of H_{c2} . Contactless radiofrequency (r.f.) penetration depth measurements were performed using a proximity detector oscillator technique¹³ and a pulsed magnetic field up to 62 T in Los Alamos NNMFL. The typical resonant frequency was ~ 28 MHz. The r.f. technique is highly sensitive to small changes (approximately 1–5 nm) in the r.f. penetration depth λ , and thus, it is an accurate method for determining H_{c2} of superconductors. Powder samples were compressed into pellets and sealed in thin glass capillaries with a small amount of He gas. Coils that generate and detect microwave signals are directly wound around the capillary (inset of Fig. 2a). The relative change of λ is proportional to the relative change of the resonating frequency f through the inductance of the coil, that is, $\Delta f/f \propto \Delta \lambda/\lambda$ (ref. 13). Upper critical field H_{c2} was determined from the field dependence of the frequency shift Δf (Supplementary Fig. 1) as the point at which the slope of the r.f. signal in the superconducting state intercepts the slope of the normal state background.

Data availability. The data that support the findings of this study are available on request from the corresponding authors (Y.K. or Y.L.).

References

- Imada, M., Fujimori, A. & Tokura, Y. Metal-insulator transitions. *Rev. Mod. Phys.* **70**, 1039–1263 (1998).
- Kanoda, K. Recent progress in NMR studies on organic conductors. *Hyperfine Interact.* **104**, 235–249 (1997).
- Uemura, Y. J. Commonalities in phase and mode. *Nat. Mater.* **5**, 253–255 (2009).
- Ganin, A. Y. *et al.* Bulk superconductivity at 38 K in a molecular system. *Nat. Mater.* **7**, 367–371 (2008).
- Darling, G. R., Ganin, A. Y., Rosseinsky, M. J., Takabayashi, Y. & Prassides, K. Intermolecular overlap geometry gives two classes of fulleride superconductor: Electronic structure of 38 K T_c Cs_3C_{60} . *Phys. Rev. Lett.* **101**, 136404 (2008).

6. Takabayashi, Y. *et al.* The disorder-free non-BCS superconductor Cs₃C₆₀ emerges from an antiferromagnetic insulator parent state. *Science* **323**, 1585–1590 (2009).
7. Ganin, A. Y. *et al.* Polymorphism control of superconductivity and magnetism in Cs₃C₆₀ close to the Mott transition. *Nature* **466**, 221–225 (2010).
8. Klupp, G. *et al.* Dynamic Jahn-Teller effect in the parent insulating state of the molecular superconductor Cs₃C₆₀. *Nat. Commun.* **3**, 912 (2012).
9. Zadik, R. H. *et al.* Optimized unconventional superconductivity in a molecular Jahn-Teller metal. *Sci. Adv.* **1**, e1500059 (2015).
10. Capone, M., Fabrizio, M., Catellani, C. & Tosatti, E. Colloquium: Modeling the unconventional superconducting properties of expanded A₃C₆₀ fullerides. *Rev. Mod. Phys.* **81**, 943–958 (2009).
11. Akashi, R. & Arita, R. Nonempirical study of superconductivity in alkali-doped fullerides based on density functional theory for superconductors. *Phys. Rev. B* **88**, 054510 (2013).
12. Baldassarre, L. *et al.* The strength of electron electron correlation in Cs₃C₆₀. *Sci. Rep.* **5**, 15240 (2015).
13. Altarawneh, M. M., Milke, C. H. & Brooks, J. S. Proximity detector circuits: An alternative to tunnel diode oscillators for contactless measurements in pulsed magnetic field environments. *Rev. Sci. Instrum.* **80**, 066104 (2009).
14. Werthamer, N. R., Helfand, E. & Hohenberg, P. C. Temperature and purity dependence of the superconducting critical field, H_{c2}. III. Electron spin and spin-orbit effects. *Phys. Rev.* **147**, 295–302 (1966).
15. Clogston, A. M. Upper limit for the critical field in hard superconductors. *Phys. Rev. Lett.* **9**, 266–267 (1962).
16. Palstra, T. T. M., Haddon, R. C., Hebard, A. F. & Zaanen, J. Electronic transport properties of K₃C₆₀ films. *Phys. Rev. Lett.* **68**, 1054–1057 (1992).
17. Iwasa, Y., Tanaka, K., Yasuda, T., Koda, T. & Koda, S. Metallic reflection spectra of K₃C₆₀. *Phys. Rev. Lett.* **69**, 2284–2287 (1992).
18. Gurevich, G. *et al.* Very high upper critical fields in MgB₂ produced by selective tuning of impurity scattering. *Supercond. Sci. Technol.* **17**, 278–286 (2004).
19. Affronte, M. *et al.* Upper critical field of Ba_{1-x}K_xBiO₃ single crystals. *Phys. Rev. B* **49**, 3502–3510 (1994).
20. Drozdov, A. P., Erements, M. I., Troyan, I. A., Ksenofontov, V. & Shylin, S. I. Conventional superconductivity at 203 kelvin at high pressures in the sulfur hydride system. *Nature* **525**, 73–77 (2015).
21. Saito, Y. *et al.* Superconductivity protected by spin-valley locking in ion-gated MoS₂. *Nat. Phys.* **12**, 144–149 (2016).
22. Lu, J. M. *et al.* Evidence for two-dimensional Ising superconductivity in gated MoS₂. *Science* **350**, 1353–1357 (2015).
23. Xi, X. X. *et al.* Ising pairing in superconducting NbSe₂ atomic layers. *Nat. Phys.* **12**, 139–143 (2016).
24. Wang, Z. S. *et al.* Electron doping dependence of the anisotropic superconductivity in BaFe_{2-x}Ni_xAs₂. *Phys. Rev. B* **92**, 174509 (2015).
25. Potočník, A. *et al.* Size and symmetry of the superconducting gap in the f.c.c. Cs₃C₆₀ polymorph close to the metal-Mott insulator boundary. *Sci. Rep.* **4**, 4625 (2014).
26. Wzietek, P. *et al.* NMR study of the superconducting gap variation near the Mott transition in Cs₃C₆₀. *Phys. Rev. Lett.* **112**, 066401 (2014).
27. Grissonnanche, G. *et al.* Direct measurement of the upper critical field in cuprate superconductors. *Nat. Commun.* **5**, 3280 (2014).
28. Shimojo, Y. *et al.* Upper critical fields of pressurized organic superconductors κ-(BEDT-TTF)₂X in the magnetic fields parallel to the layer. *Synth. Met.* **133–134**, 197–200 (2003).
29. Ohmichi, E., Ishiguro, T., Yamada, J., Anzai, H. & Osada, T. Upper critical field of κ-(BEDT-TTF)₂X (X = Cu[N(CN)₂]Br, Cu(NCS)₂) in magnetic fields parallel to the layer. *Synth. Met.* **133–134**, 245–246 (2003).
30. Agosta, C. C. *et al.* Experimental and semiempirical method to determine the Pauli-limited field in quasi-two-dimensional superconductor as applied to κ-(BEDT-TTF)₂Cu(NCS)₂: Strong evidence of a FFLO state. *Phys. Rev. B* **85**, 214514 (2012).
31. Nam, M.-S. *et al.* Superconducting fluctuations in organic molecular metals enhanced by Mott criticality. *Sci. Rep.* **3**, 3390 (2013).
32. Xu, Y.-M. *et al.* Fermi surface dichotomy of the superconducting gap and pseudogap in underdoped pnictides. *Nat. Commun.* **2**, 392 (2011).
33. Nomura, Y., Sakai, S., Capone, M. & Arita, R. Unified understanding of superconductivity and Mott transition in alkali-doped fullerides from first principles. *Sci. Adv.* **1**, e1500059 (2015).
34. Jiang, H.-C. & Kivelson, S. Electronic pair binding and Hund's rule violations in doped C₆₀. *Phys. Rev. B* **93**, 165406 (2016).
35. Elsinger, H. *et al.* κ-(BEDT-TTF)₂Cu[N(CN)₂]Br: a fully gapped strong-coupling superconductor. *Phys. Rev. Lett.* **84**, 6098–6101 (2000).

Acknowledgements

We thank Y. Nomura, R. Arita and E. Tosatti for fruitful discussions. This work was supported in part by Grants-in-Aid for Specially Promoted Research (No 25000003), for Young Scientists (B) (No 2474022), and for Scientific Research on Innovative Areas '3D Active-Site Science' (No 26105004) and 'J-Physics' (No 15H05882) from JSPS, Japan, and SICORP-LEMSUPER FP7-NMP-2011-EU-Japan project (No 283214). This work was also supported by the Mitsubishi Foundation and sponsored by the 'World Premier International (WPI) Research Center Initiative for Atoms, Molecules and Materials,' Ministry of Education, Culture, Sports, Science, and Technology (MEXT) of Japan. K.P. and M.J.R. thank EPSRC for support (EP/K027255 and EP/K027212). M.J.R. is a Royal Society Research Professor. RMcD acknowledges support from U.S. Department of Energy Office of Basic Energy Sciences 'Science at 100 T' program and that a portion of this work was performed at the National High Magnetic Field Laboratory, which is supported by National Science Foundation Cooperative Agreement No DMR-1157490 and the State of Florida.

Author contributions

Y.K. and Y.I. conceived the experiments. Samples were grown and characterized by R.H.Z., Ya. T., R.H.C., M.J.R. and K.P., and prepared for the measurements of H_{c2} by Y.K. and Yu. T. Pulse-field experiments were performed by Y.K. with help of R.D.M. in National High Magnetic Field Laboratory, Pulsed Field Facility, in Los Alamos National Laboratory, USA. Y.K., K.P. and Y.I. led physical discussions. Y.K. mainly wrote the manuscript.

Additional information

Supplementary Information accompanies this paper at <http://www.nature.com/naturecommunications>

Competing financial interests: The authors declare no competing financial interests.

Reprints and permission information is available online at <http://npg.nature.com/reprintsandpermissions/>

How to cite this article: Kasahara, Y. *et al.* Upper critical field reaches 90 Tesla near the Mott transition in fulleride superconductors. *Nat. Commun.* **8**, 14467 doi: 10.1038/ncomms14467 (2017).

Publisher's note: Springer Nature remains neutral with regard to jurisdictional claims in published maps and institutional affiliations.



This work is licensed under a Creative Commons Attribution 4.0 International License. The images or other third party material in this article are included in the article's Creative Commons license, unless indicated otherwise in the credit line; if the material is not included under the Creative Commons license, users will need to obtain permission from the license holder to reproduce the material. To view a copy of this license, visit <http://creativecommons.org/licenses/by/4.0/>

© The Author(s) 2017