
This is an electronic reprint of the original article.
This reprint may differ from the original in pagination and typographic detail.

Author(s): Kempainen, Erno & Halme, Janne & Lund, Peter D.

Title: An analytical model of hydrogen evolution and oxidation reactions on electrodes partially covered with a catalyst

Year: 2016

Version: Final published version

Please cite the original version:

Kempainen, Erno & Halme, Janne & Lund, Peter D.. 2016. An analytical model of hydrogen evolution and oxidation reactions on electrodes partially covered with a catalyst. *Physical Chemistry Chemical Physics*. Volume 18, Issue 19. 13616-13628. ISSN 1463-9076 (printed). DOI: 10.1039/c6cp00908e.

Rights: © 2016 Royal Society of Chemistry (RSC).

All material supplied via Aaltodoc is protected by copyright and other intellectual property rights, and duplication or sale of all or part of any of the repository collections is not permitted, except that material may be duplicated by you for your research use or educational purposes in electronic or print form. You must obtain permission for any other use. Electronic or print copies may not be offered, whether for sale or otherwise to anyone who is not an authorised user.

Analytical model of hydrogen evolution and oxidation reactions on electrodes partially covered with catalyst

Erno Kemppainen*, Janne Halme and Peter D. Lund

Aalto University, School of Science, Department of Applied Physics,

P.O.Box 15100, FI-00076 Aalto, Espoo, Finland, E-mail: erno.kemppainen@aalto.fi

Our previous theoretical study on the performance limits of platinum (Pt) nanoparticle catalyst for the hydrogen evolution reaction (HER) had shown that the mass transport losses at a partially catalyst-covered planar electrode are independent of the catalyst loading. This suggests that the two-dimensional (2D) numerical model used could be simplified to a one-dimensional (1D) model to provide an easier but equally accurate description of the operation of these HER electrodes. In this article we derive the analytical 1D model and show that it indeed gives results that are practically identical to the 2D numerical simulations. We discuss the general principles of the model and how it can be used to extend the applicability of existing electrochemical models of planar electrodes to the low catalyst loadings suitable for operating photoelectrochemical devices at unconcentrated sunlight. Since the mass transport losses of the HER are often very sensitive to the H_2 concentration, we also discuss the limiting current density of the hydrogen oxidation reaction (HOR) and how it is not necessarily independent of the reaction kinetics. The results give insight to the interplay of kinetic and mass-transport limitations at HER/HOR electrodes with implications to the design of kinetic experiments and the optimization of the catalyst loadings in the photoelectrochemical cells.

1. Introduction

This paper continues our work on theoretical simulation models used for the optimization of catalyst coatings for photoelectrochemical water splitting cells^{1,2}. The studied model system is a planar TiO_2 coated silicon photoelectrode (PE) partially covered with randomly distributed Pt nanoparticles (Figure 1). Although often criticized for scarcity and cost, Pt is still the most common catalyst used in electrochemical energy conversion devices such as in electrolyzers and fuel cells³⁻⁶. Employing it as finely dispersed nanoparticles helps mitigating the material costs, because it gives high electrocatalytically active surface area per gram of material used.

Optimizing catalyst loadings for photoelectrochemical (PEC) cells is quite different from other electrochemical systems with one respect: their current and power density is relatively low, because it is limited by the absorbed photon flux of sunlight. For example, a fully integrated planar PEC device, that employs equal electrode areas for both the photoconversion and electrolysis reactions, can generate at most ca. 40 mA/cm² when operated with unconcentrated sunlight⁷⁻¹⁰. At such low current densities, only a small amount of Pt is needed^{1,11-13}. For example, our previous work showed that a Pt loading as low as 100 ng/cm² is enough to run the hydrogen evolution reaction (HER) in a PEC cell at 10 mA/cm² current density without inflicting more than 50 mV overpotential¹. This loading is so low that the 5 nm Pt nanoparticles used cover only 1 % of the electrode surface.

Other electrochemical devices, that are usually rate-limited by the transport of chemical species (reactants and products) rather than photon flux, can be designed for much higher operating current densities. In water electrolyzers and alkaline fuel cells, for example, current densities as high as 0.2 – 2 A/cm² are reached by employing highly porous conducting

electrodes that host large number of Pt particles, typical loadings being as high as 0.05 – 2 mg/cm² ^{3,5,14}. In this case, the catalyst surface area exceeds the projected surface area of the electrode by more than one order of magnitude ^{15,16}. Optimization of such porous electrodes in terms of electrochemical performance and catalyst utilization is a classical problem of electrochemical device engineering, which requires the theoretical modeling of the coupled reaction kinetics and mass transport within the porous electrode structure ^{17–19}. The corresponding geometrical modeling of catalyst performance in PEC cells with low surface coverage has received less attention, perhaps because it has been previously thought that no catalyst would perform well enough to be used in such low amounts.

Our first paper on this topic presented a 2D numerical model that combines the effects of mass transport and HER kinetics to describe the current–overpotential characteristics of such PEs ¹. Our second paper extended the model by considering the transport of both gaseous and dissolved H₂, as well as mass exchange between them in the electrolyte². In this work, we present an analytical model that captures the phenomena described by the 2D numerical model and is therefore readily applicable to interpreting experimental data and performing optimization calculations in practical research. We also discuss the assumptions made with the mass transport geometry and the reaction kinetics. Although our primary interest is in the PEs, our model focuses on the mass transport in the electrolyte and the behavior of the metallic catalyst on the electrode surface. When the current flows solely through the catalyst particles, the PE-catalyst and the catalyst-electrolyte segments can be treated separately, because the potential level in the catalyst can be used as a boundary condition for both segments. Summing the potential differences that correspond to the same current density and catalyst potential yields the total voltage, as with fully covered PEs²⁰. This way, the model developed in this paper can be connected to models describing the photovoltaic operation of the PE in a complete PEC device.

The paper is organized as follows. We first present the main observations from the previous two papers with regard to the geometrical considerations to give rationale to the 1D modeling approach in this paper (Section 2). Thereafter we discuss our general approach and the details of the kinetic model coupled with the mass transport, and how we solve the equations. As the mass transport is included in our model, also the effects of the limiting current density on reaction kinetics are discussed, as well as how the reaction mechanism affects the limiting current density. The relative simplicity of our model allows us to derive analytical expressions that describe the micropolarization region and high overpotentials (i.e. “Tafel equation”), which are compared to the full numerical solution.

2. Current distribution and mass transport losses at nanoparticle electrode with low surface coverage

One of the observations from our earlier 2D numerical simulations of our model system (Figure 1) was that, when the current density per electrode area was considered, the mass transport losses were almost independent of the Pt loading ^{1,2}, which allowed simplifying the mass transport problem to one dimension. As a result, an analytical 1D solution mathematically similar to the diffusion of only dissolved H₂, but including the effects of the bubble transport and dissolution kinetics, was found and shown to be valid at current densities below ca. 40 mA/cm² ². Why the catalyst loading had only a little effect on the mass transport could be rationalized by realizing that the stagnant diffusion layer was much thicker than the average distance between the Pt particles. Because the flux profile is a result of a linear drift-diffusion model, it can also be considered as a superposition of the overlapping, hemispherical flux profiles of the individual catalyst particles ^{21–23}: Close to the electrode surface the flux is mainly affected by the nearest particle, creating the hemispherical profile, whereas far from the interface the effects of the individual particles are blurred, forming a uniform 1D profile ²³.

Numerical simulations (Figure 1C) illustrate this by showing how the 1D flux converges to a spherical flux towards the catalyst particle only very close to the electrode surface. The fact that going from a uniform Pt coating to sparsely distributed Pt nanoparticles hardly affects the mass transport losses indicates that the convergence of the transport flux to the Pt particle brings negligible contribution to the total mass transport resistance. The 1D mass transport picture holds as long as the average distance between the nearest particles is much shorter than the diffusion layer thickness that corresponds to the limiting current density of the mass transport^{23,24}. Therefore the 1D picture does not apply to the extremely sparsely catalyst decorated electrodes and to very rapid mass transport. Since at least the sparse catalyst array could be a relevant scenario, in addition to other study topics, we also aim to identify when the 1D picture is no longer accurate.

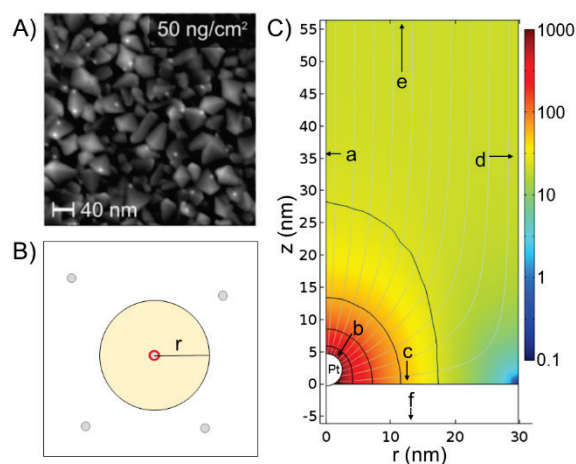


Figure 1. Illustrations of real and simulated electrode with 50 ng/cm^2 Pt nanoparticle ($d = 5 \text{ nm}$) loading having 2.7 % surface area fraction ($f_{\text{surf}} \approx 0.027$): A) SEM image of Pt nanoparticles on TiO_2 . Reproduced from Ref¹ with permission from The Royal Society of Chemistry.; B) Scheme of the diffusion domain approach ($r \approx 30 \text{ nm}$); C) Local current density distribution (mA/cm^2) in the electrolyte for $i_{\text{el}} \approx -20 \text{ mA/cm}^2$. Grey lines are current stream lines and black lines indicate the current density isopotential surfaces. Letters a – f indicate the boundaries in the simulation cell: a is the symmetry axis at $r = 0$, b the Pt surface, c the inactive electrode substrate, d the outer boundary of the cell and e indicates the geometrical position of the bulk electrolyte interface, although it is significantly farther from the electrode than the upper edge of the figure. Similarly to e, f indicates the position of the voltage contact of the electrode substrate in the 2D simulations, although in reality it is farther than the bottom of the shown portion of the simulation cell.

Another key observation was that the mass transport and kinetic overpotentials depend on different current densities: the mass transport overpotential depends on the current per electrode surface area whereas the kinetic overpotential arises from the current density per catalyst surface area, which in our case is smaller than the electrode area. This separation suggests that our 2D model could be fully simplified to 1D by coupling these current density scales to each other. In this work, we show that this is indeed correct: the 1D analytical model obtained agrees remarkably well with the 2D numerical simulations. This result suggests that also other 1D models, or point models of the homogeneous electrode-electrolyte interface, could be extended to electrodes partially covered with catalyst.

3. One-dimensional model of HER/HOR on catalyst particle arrays

3.1. General modeling principle

We describe the electrode with a 1D model. Concentrations on the catalyst surface are determined by the mass transport model and the current density per electrode area (i_{el}), whereas the total overpotential is given by the model of the reaction kinetics, current density per catalyst area (i_{cat}) and surface concentrations. These current density scales are coupled together via the ratio of the catalyst surface area (A_{cat}) to the geometrical electrode area (A_{el}), f_{surf}

$$i_{el} = f_{surf} i_{cat} \quad (1a)$$

$$f_{surf} = \frac{A_{cat}}{A_{el}} \quad (1b)$$

In the context of the present paper, equation (1) is the general principle for coupling a kinetic model that considers varying catalyst surface areas to a mass transport model that neglects them.

In a broader context, we point out that, mathematically speaking, f_{surf} can describe equally well also varying the catalytic activity of the electrode surface, because in all the equations of our model, it appears always as a factor multiplying the exchange current density of the reaction. By scaling the exchange current density of the reaction with the surface area fraction, we assume that the catalyst distribution on the surface is sufficiently homogeneous that the changes in the catalyst loading can be described as changes in the catalytic activity of the electrode, without considering the mass transport in the vicinity of the particles.

The conventional way of using f_{surf} is to describe electrodes with an active area that is larger than the geometrical electrode area ($f_{surf} > 1$, Figure 2C), i.e. as the surface roughness factor^{15,25,26}. Using the ratio to describe surfaces that are only partially covered with catalyst ($f_{surf} < 1$, Figure 2A) is apparently not as common, and we found only a few examples of this^{24,27}. Our kinetic model is based on earlier models^{15,28}, and the details of the reaction kinetics are discussed in several earlier articles, such as^{15,28–34}. In this article, we verify that equation (1) is as accurate as our 2D model of nanoparticle arrays and thereafter analyze the effects of the catalyst surface area on the electrode operation. Although our discussion does not go into the details of the reaction kinetics, such as the effects of the kinetic parameters^{28,34,35} or blocked adsorption sites¹⁵, the results from previous theoretical analyses can be applied to our situation, namely the study of the effect of catalyst surface area, by varying either the exchange current density or the mass transport limitation.

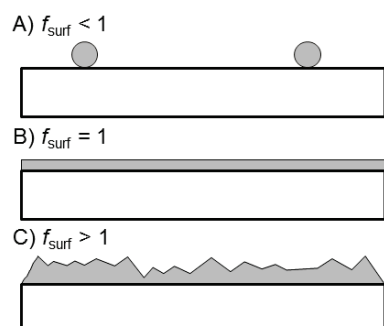


Figure 2. Cross-sectional schemes of the different regimes of the f_{surf} values: A) partially covered electrode, B) smooth, planar electrode and C) rough, planar electrode. The grey color indicates the electrochemically active material.

3.2. Mass transport and surface concentrations

We assume linear mass transport to enable direct comparison with our earlier 2D simulations¹. For the sake of simplicity, and to allow analytical solutions to be reached, the effect of H₂ bubbles on the transport of the dissolved H₂ molecules is neglected here².

In practice, linear mass transport means that the surface concentrations can be described with a bulk concentration and a limiting current density (which depends on the bulk concentration)

$$\frac{c_{H^+}}{c_{H^+}^0} = \frac{c_{H^+}^b}{c_{H^+}^0} \left(1 - \frac{i_{el}}{i_{lim,H^+}} \right) \quad (2a)$$

$$\frac{c_{H_2}}{c_{H_2}^0} = \frac{c_{H_2}^b}{c_{H_2}^0} \left(1 - \frac{i_{el}}{i_{lim,H_2}} \right) \quad (2b)$$

$$i_{lim,n} = i_{lim,n}^0 \frac{c_n^b}{c_n^0} \quad (2c)$$

The concentration of a species n on the catalyst surface is marked with c_n , the bulk concentration is indicated with superscript b and the concentration that corresponds to the thermodynamic reference potential (in this case the standard hydrogen electrode, SHE and V_{SHE}) with superscript 0 . The SHE conditions correspond to 1 mol/l (1 M) proton concentration and 1 bar H₂ pressure, i.e. $0.77 \cdot 10^{-3}$ M, but it is possible that only a small fraction of H₂ is in form that can participate in the reaction at the electrode surface³⁶. In our simulations $c^b = c^0$, and the bulk concentration is included for the sake of generality.

For SHE conditions we use the limiting current densities that we determined from earlier 1D simulations ("flat Pt" in¹, for 5 μ m diffusion layer $i_{lim,H^+} = -35940$ mA/cm² and $i_{lim,H_2} = 15.4$ mA/cm², see Table 1. in Section 3.4. for the simulation parameters). We follow the convention that positive currents correspond to HOR and negative to HER.

In addition to simplifying the details of the catalyst array geometry and mass transport to the single parameter f_{surf} (Sections 2. and 3.1.), we focus on the steady state operation, and therefore omit transient behavior. Phenomena related to the electrode geometry that f_{surf} alone cannot describe, such as the surface concentration transient in a nanoelectrode array^{22,23}, are out of the scope of our model. Although also surface diffusion and spillover effect may be important with catalyst arrays, especially with rapid mass transport²⁷, we have neglected them here, as it seems that the HER/HOR on Pt could be described with only mass transport and reaction kinetics²⁴.

3.3. Reaction kinetics

The total hydrogen oxidation and evolution reaction proceeds through intermediate reactions called Volmer, Tafel and Heyrovsky steps



Hydrogen atoms adsorbed on the surface are marked with H_{ads} and reaction proceeding from left to right corresponds to the HOR (and from right to the left to the HER). Although the HER/HOR on Pt has been studied extensively, even the most recent literature is somewhat inconclusive about the reaction mechanism, with some results indicating the Volmer-Tafel (V-T)^{16,37,38}, and others the Volmer-Heyrovsky (V-H) mechanism³⁹ as the dominant path. To

allow direct comparisons with our earlier 2D simulations¹ where we assumed the V-T path with Volmer as the rate determining step (RDS), we assume the same mechanism also in this article. Some features in our analysis are specific to the V-T mechanism, but the general principle of the model and the applicability of the 1D model should be independent of the reaction mechanism.

The V-T mechanism is convenient for the analysis of the model and the simulations, because we can derive an analytical expression for the fraction of the reaction sites covered with H_{ads} (θ) as a function of the current density. Alternatively, we can also solve the current density as a function of θ , as discussed in the next section. We begin with the reaction rates of the Tafel (v_T) and Volmer (v_V) steps

$$v_T = v_{0,T} \left[\left(\frac{1-\theta}{1-\theta^0} \right)^2 \left(\frac{c_{H_2}}{c_{H_2}^0} \right) - \left(\frac{\theta}{\theta^0} \right)^2 \right] = v_{0,T} \left[\left(\frac{1-\theta}{1-\theta^0} \right)^2 \frac{c_{H_2}^b}{c_{H_2}^0} \left(1 - \frac{i_{el}}{i_{lim,H_2}} \right) - \left(\frac{\theta}{\theta^0} \right)^2 \right] \quad (4a)$$

$$v_V = v_{0,V} \left[\frac{\theta}{\theta^0} e^{\frac{\eta'}{2}} - \frac{c_{H^+}^b}{c_{H^+}^0} \left(\frac{1-\theta}{1-\theta^0} \right) e^{-\frac{\eta'}{2}} \right] = v_{0,V} \left[\frac{\theta}{\theta^0} e^{\frac{\eta'}{2}} - \frac{c_{H^+}^b}{c_{H^+}^0} \left(1 - \frac{i_{el}}{i_{lim,H^+}} \right) \left(\frac{1-\theta}{1-\theta^0} \right) e^{-\frac{\eta'}{2}} \right] \quad (4b)$$

$$\eta' = \frac{q_e(V-V_0)}{k_B T} \quad (4c)$$

The rate of the Volmer step (equation (4b)) is described with an extended version of the Butler-Volmer (B-V) equation that takes into account the proton concentration and the fraction of reaction sites occupied by adsorbed hydrogen atoms. The elementary charge is denoted with q_e , Boltzmann constant with k_B and temperature in Kelvins with T . The symmetry factor of the Volmer step is assumed to be $\beta = 1/2$ (and thus $\eta'/2$ in the exponent), as is common. Superscript 0 marks the equilibrium value at the thermodynamic reference potential (i.e. the SHE potential) also in the case of θ . The exchange rates of the reactions are denoted with the subscript 0 and the equilibrium potential of the reaction is V_0 (0 V vs SHE) with V being the potential on the catalyst surface. Because the resistive losses in the metallic catalysts are negligible, the potential of the catalyst particles can be taken constant, and therefore, the catalyst potential V can be used directly as a boundary condition to connect a photovoltaic model of the PE to the kinetic model of the catalyst. This works as long as the HER/HOR proceeds only on the catalyst surface, and hence all current flows through the PE-catalyst contact and none, or a negligibly small fraction, through the PE-electrolyte interface. Note that this holds also in the case of pinched-off catalyst particles⁴⁰, when the charge transport to the PE-catalyst contact depends on the nearby PE-electrolyte interface, because, even in this case, the catalyst potential can be used as the reference point for the calculations. On the other hand, if the reaction kinetics depend not only on the catalyst particle and its potential, our approach of separating the catalyst operation from the rest of the electrode does not apply, and another modeling approach should be taken instead. This would be true for instance if the catalytic activity of the bare PE surface could not be neglected, or the metal coverage was thin enough to allow the substrate to affect the electronic properties of the catalyst surface, making it different from the surface of the bulk material, thus affecting the reaction kinetics^{41,42}.

Equation (4) gives the reaction rates on the catalyst surface. We substituted current density for the surface concentrations in equations (4a) and (4b) to explicitly show the variables that we use in the calculations. Because no electrons cross the electrode-electrolyte interface in the Tafel-reaction, the Volmer rate multiplied by the Faraday constant and f_{surf} yields the current density per electrode area.

$$i_{el} = f_{surf} F v_V = f_{surf} i_{0,V} \left[\frac{\theta}{\theta^0} e^{\frac{\eta'}{2}} - \left(1 - \frac{i_{el}}{i_{lim,H^+}} \right) \frac{c_{H^+}^b}{c_{H^+}^0} \left(\frac{1-\theta}{1-\theta^0} \right) e^{-\frac{\eta'}{2}} \right] \quad (5)$$

The exchange current density is $i_{0,v} = F \cdot v_{0,v}$, where F is the Faraday constant. When the current density and θ are known (see Section 3.5.), the overpotential is solved numerically from this equation. Additionally, it is possible to derive analytical expressions for the micropolarization range and “Tafel-equations” for high negative and positive overpotentials (Section 3.7.).

The overpotential in equation (4c) is the total overpotential and includes the losses from both the reaction kinetics and mass transport. The mass transport overpotential is the Nernst potential difference between the catalyst surface and the bulk electrolyte.

$$\eta_{MT} = \frac{k_B T}{q_e} \left(\ln \left(\frac{c_{H^+}}{c_{H^+}^b} \right) - \frac{1}{2} \ln \left(\frac{c_{H_2}}{c_{H_2}^b} \right) \right) \quad (6)$$

The current density dependence can be solved by inserting equations (2a) and (2b) inside the logarithms. Often, it can be assumed that the limiting current density of the proton transport is significantly higher than the current density ($|i_{el}/i_{lim,H^+}| \rightarrow 0$) or the H_2 mass transport limitation, leading to a solution that depends only on the limiting current density of the H_2 transport^{1,16,43,44}

$$\eta_{MT} \approx -\frac{k_B T}{2q_e} \ln \left(1 - \frac{i_{el}}{i_{lim,H_2}} \right) \quad (7a)$$

$$i_{el} \approx i_{lim,H_2} \left(1 - e^{-2\frac{q_e \eta_{MT}}{k_B T}} \right) \quad (7b)$$

This reflects the starting point of our model. When the current density per electrode area is considered, the mass transport losses are independent of the amount of catalyst (f_{surf}). If the H_2 mass transport limitation is lower than the exchange current density of the electrode, then not only is the HOR under diffusion control, but also the HER overpotential is approximately equal to the mass transport overpotential, thus effectively determined by the H_2 transport^{16,43}.

In equilibrium the net rate of both reaction steps must be zero, from which we can derive the potential for the reversible hydrogen electrode (RHE) with the given bulk concentrations. Starting from equation (4), this condition yields us an expression similar to equation (6) (but with c_n^b/c_n^0 inside the logarithms, instead of c_n/c_n^b), so the kinetics of our model is consistent with the thermodynamics of the reaction. It would be possible to also derive expressions for and numerically solve the dependence of the exchange current density with respect to the proton and H_2 concentrations, but this property and the comparison to experimental results³⁷⁻³⁹ are beyond the scope of our analysis.

3.4. Simulation parameters

Table 1. contains the simulation parameters introduced in the previous sections. We used the same values that we used previously¹, or values derived from those simulations. The limiting current densities correspond to the solution of the 1D drift-diffusion problem over a 5 μm thick diffusion layer. In the case of protons, electroneutrality is enforced and perchlorate ions (ClO_4^-) are the anions in the electrolyte.

In the 2D simulations we assumed spherical particles that were simulated in cylindrical geometry. Therefore, the catalyst surface area fraction is

$$f_{surf} = 4f_{exp} \left(\frac{r}{R_{cell}} \right)^2 \quad (8)$$

Where the r is the radius of the catalyst particles, f_{exp} the fraction of the catalyst particle surface that is exposed to the electrolyte and R_{cell} the radius of the simulation cell. Previously, we assumed spherical particles (5 nm diameter, i.e. $r=2.5$ nm) that were slightly embedded in the substrate, so that 95% of their surface area was exposed to the electrolyte (i.e. $f_{exp} = 0.95$)¹.

The radius of the simulation cell corresponded to a given catalyst mass loading (ng/cm^2 , L_{cat})

$$L_{\text{cat}} = \frac{4\rho_{\text{cat}}r^3}{3R_{\text{cell}}^2} \quad (9)$$

The density of the catalyst material is ρ_{cat} , which for Pt is $\rho = 21450 \text{ kg}/\text{m}^3$ ⁴⁵. Depending on the regularity of the particle placement on real electrodes, equation (9) may slightly overestimate either the center to center distance between particles ($d_{\text{c-c}} = 2R_{\text{cell}}$), if starting from the mass loading, or the catalyst loading, if starting from the average distance between the neighboring particles. In both cases, the overestimation originates from the use of cylindrical/circular unit cell. In regular particle arrays the unit cells are regular polygons and the distance between the particles is twice the apothem (the distance between the center of the polygon and the midpoint of its side). Thus, for a given unit cell area (particle density) the radius is larger than the apothem and, for a given interparticle distance, the area of the circle is smaller than the area of the polygon.

Figure 3. The simulation parameters and their original source (if not based only on1)

Symbol	Explanation	Value
T	Temperature	298.15 K
$i_{\text{lim,H}_2}$	Limiting current density of H_2 transport	15.4 mA/cm^2
$i_{\text{lim,H}^+}$	Limiting current density of H^+ transport	-35940 mA/cm^2
$c_{\text{H}^+}^0$	Equilibrium proton concentration	1.0 M
$c_{\text{H}_2}^0$	Equilibrium H_2 concentration	0.7698 mM ³⁶
$i_{0,\text{V}}$	Volmer reaction exchange current density	100 mA/cm^2 ¹⁶
r_{H}	Ratio of Heyrovsky and Volmer rates	0 ¹⁶
r_{T}	Ratio of Tafel and Volmer rates	9.5
θ^0	Equilibrium H-coverage	0.67 ⁴⁶

3.5. Current density and hydrogen coverage of the catalyst

As mentioned, equation (5) includes three unknown variables: i_{el} , θ and η' . We can use either the current density or the hydrogen coverage as the starting point and solve the other from the Tafel rate. In steady state, θ does not change over time, yielding

$$2f_{\text{surf}}r_{\text{T}}i_{0,\text{V}} \left[\left(\frac{1-\theta}{1-\theta^0} \right)^2 \frac{c_{\text{H}_2}^b}{c_{\text{H}_2}^0} \left(1 - \frac{i_{\text{el}}}{i_{\text{lim,H}_2}} \right) - \left(\frac{\theta}{\theta^0} \right)^2 \right] = i_{\text{el}} \quad (10)$$

The factor 2 comes from the stoichiometry of the reactions (two hydrogen atoms per Tafel step, but one per Volmer step). We also define $r_{\text{T}} = v_{0,\text{T}}/v_{0,\text{V}}$ (similarly to Wang et al.¹⁵), the relative exchange rate of the Tafel step compared with the Volmer step. Although one can consider $r_{\text{T}} > 1$ to correspond to Volmer as the RDS, and $r_{\text{T}} < 1$ to Tafel as the RDS, the value of r_{T} needs to be significantly lower than 1 to produce the 30 mV/decade Tafel slope that is considered an indication of the Tafel step being the RDS³⁰.

Since the only unknown variables in equation (10) are the current density and the surface hydrogen coverage, we can use either of them as the starting point and solve the other analytically. In our case of V-T mechanism, and possibly also in the case of other Langmuir-Hinshelwood reactions, θ is a mathematically convenient starting point. However, because the convenience may be limited to the specific combination of the kinetic and mass transport models, and because θ is likely a less intuitive starting point than the current density, we discuss our model also with the current density as the starting point.

Solving the current density (i.e. starting from $\theta \in [0,1]$) from equation (10) gives

$$i_{el} = \frac{2f_{surf}r_T i_{0,V} \left[\frac{c_{H_2}^b}{c_{H_2}^0} \left(\frac{1-\theta}{1-\theta^0} \right)^2 - \left(\frac{\theta}{\theta^0} \right)^2 \right]}{1 + \frac{2f_{surf}r_T i_{0,V} c_{H_2}^b}{i_{lim,H_2} c_{H_2}^0} \left(\frac{1-\theta}{1-\theta^0} \right)^2} \quad (11)$$

The nominator is the Tafel-rate with the bulk H_2 concentration and the denominator corresponds to the effects of the H_2 transport. It is readily apparent that the proton concentration has no effect on the interdependence of the current density and θ . With equation (11) we can show that $\partial i_{el}/\partial \theta < 0$ (when $\theta^0 \in (0, 1)$ and $\theta \in (0, 1)$), so the extremes $\theta = 0$ and $\theta = 1$ correspond to the kinetic limits of the HOR and HER current densities, respectively. Note that in the case of the HOR the mass transport limitation remains and affects the limiting current density. This is discussed in more detail in Section 3.6.

To solve the hydrogen coverage from the current density, equation (10) is reorganized to the standard form

$$A\theta^2 + B\theta + C = 0 \quad (12a)$$

$$\begin{cases} A = \frac{c_{H_2}^b}{c_{H_2}^0} \left(1 - \frac{i_{el}}{i_{lim,H_2}} \right) - \left(\frac{1-\theta^0}{\theta^0} \right)^2 \\ B = -2 \frac{c_{H_2}^b}{c_{H_2}^0} \left(1 - \frac{i_{el}}{i_{lim,H_2}} \right) \\ C = \frac{c_{H_2}^b}{c_{H_2}^0} \left(1 - \frac{i_{el}}{i_{lim,H_2}} \right) - \frac{i_{el}(1-\theta^0)^2}{2f_{surf}r_T i_{0,V}} \end{cases} \quad (12b)$$

$$\theta = \begin{cases} \frac{-B - \sqrt{B^2 - 4AC}}{2A} & A \neq 0 \\ -\frac{C}{B} & A = 0 \end{cases} \quad (12c)$$

Although there are minor differences, this is equivalent to the solution of Wang and co-workers^{15,47}. The physically sensible solution corresponds to the negative root, because it yields $\theta = \theta^0$, when $i_{el} = 0$ (and $c_{H_2}^b = c_{H_2}^0$). The last term of C corresponds to the kinetic limiting current density: When we assume that either the surface is fully covered with hydrogen, or that the coverage tends to zero (and $c_{H_2} = c_{H_2}^0$), the highest current densities per catalyst area that the Tafel step allows are

$$i_{lim,HER,kin,Pt} = \frac{-2r_T i_{0,V}}{\theta^0^2} \quad (13a)$$

$$i_{lim,HOR,kin,Pt} = \frac{2r_T i_{0,V}}{(1-\theta^0)^2} \quad (13b)$$

Therefore, the last term can be rewritten as

$$\frac{i_{el}(1-\theta^0)^2}{2f_{surf}r_T i_{0,V}} = \frac{i_{el}}{f_{surf}i_{lim,HOR,kin,Pt}} = - \left(\frac{1-\theta^0}{\theta^0} \right)^2 \frac{i_{el}}{f_{surf}i_{lim,HER,kin,Pt}} \quad (13c)$$

This term is therefore the mathematical way to express the effect of the finiteness of the Tafel exchange rate on the hydrogen coverage as a function of the current density. We denote the kinetic current density limitations per electrode area in a shorter form that includes the effect of the catalyst surface area

$$i_{lim,HER,kin} = f_{surf}i_{lim,HER,kin,Pt} \quad (14a)$$

$$i_{lim,HOR,kin} = f_{surf}i_{lim,HOR,kin,Pt} \quad (14b)$$

In the micropolarization region, the current density is small compared with the exchange current density of the reaction. Regardless of which step is the RDS, the last term of the C is at most equal to the current density divided by the effective exchange current density of the electrode. If Volmer is the RDS, $r_T > 1$ and the term is even smaller than this fraction. On the other hand, if $r_T < 1$, the denominator is equal to the exchange current density of the reaction, so the assumption is valid irrespective of value of r_T . When the last term of C can be neglected, equation (12c) is simplified to

$$\theta \approx \frac{\theta^0 \sqrt{\frac{c_{H_2}^b}{c_{H_2}^0} \left(1 - \frac{i_{el}}{i_{lim,H_2}}\right)}}{1 - \theta^0 \left(1 - \sqrt{\frac{c_{H_2}^b}{c_{H_2}^0} \left(1 - \frac{i_{el}}{i_{lim,H_2}}\right)}\right)} \quad (15)$$

Note that at the low current densities, i.e. $i_{el}/i_{lim,H_2} \rightarrow 0$, this expression becomes constant that depends only on the equilibrium coverage and the bulk H_2 concentration, which implies that if the bulk H_2 concentration is fixed by the experimental conditions, the H_2 transport determines the current density range, where constant hydrogen coverage can be assumed in the interpretation of the experimental results. Although the hydrogen coverage is independent of f_{surf} , low catalyst loadings allow the current density per catalyst area to reach higher values before the hydrogen coverage changes significantly from its equilibrium value.

3.6. Current limitation due to kinetics, mass transport and their combination

As discussed briefly in the previous section, in addition to the mass transport, also the reaction kinetics limits the current density in the case of the V-T mechanism, because the rate of the Tafel step depends directly on θ , but not on the overpotential. Therefore, the steady state current density cannot be enhanced beyond the limits imposed by the Tafel step. The expressions for this limit for both HER and HOR (in the SHE conditions) were given in equation (13).

Because proton transport does not affect θ directly, we can consider the mass transport and kinetic limitations of HER separately. Therefore, if the limiting current density of proton transport is lower than the limit of the reaction kinetics, the catalyst is never fully covered with adsorbed hydrogen atoms, and the current is limited by the proton transport. In the opposite case, the current density is limited by the Tafel-step (equation (11) and (12), $\theta \rightarrow 1$ corresponds to $i_{el} \rightarrow i_{lim,HER,kin}$) and the mass transport limit is not reached. In equation (15) the kinetic limitation is neglected and therefore $\theta \rightarrow 1$ corresponds to $i_{el} \rightarrow -\infty$.

Because the mass transport losses are mainly dictated by the H_2 concentration (equations (6) and (7)), the limiting current density of the H_2 transport is an important parameter, even when considering only the HER^{1,16,44}. However, as already mentioned, also the reaction kinetics limits the HOR current density. Therefore, although it may be easy to measure the HOR limiting current density, it might not be equal to the H_2 transport limitation. Moreover, because the H_2 transport and θ are directly coupled to each other in the Tafel-rate, mass transport and kinetic limitations cannot always be considered separately, like in the case of the HER. As mentioned regarding equation (11), the current density is maximized at the limit $\theta \rightarrow 0$, so the corresponding current density is the HOR limiting current density.

$$i_{lim,HOR,VT} = i_{el}(\theta = 0) = \frac{\frac{2f_{surf}r_T i_{0,V} c_{H_2}^b}{(1-\theta^0)^2 c_{H_2}^0}}{1 + \frac{2f_{surf}r_T i_{0,V} c_{H_2}^b}{i_{lim,H_2} (1-\theta^0)^2 c_{H_2}^0}} \quad (16a)$$

We recognize the kinetics-limited HOR current density from equations (13b) and (14b) and (after multiplying both the nominator and denominator by i_{lim,H_2}) rewrite this as

$$i_{lim,HOR,VT} = \frac{\frac{c_{H_2}^b}{c_{H_2}^0} i_{lim,HOR,kin} \cdot i_{lim,H_2}}{\frac{c_{H_2}^b}{c_{H_2}^0} i_{lim,HOR,kin} + i_{lim,H_2}} = \frac{c_{H_2}^b}{c_{H_2}^0} \left(\frac{1}{i_{lim,H_2}^0} + \frac{1}{i_{lim,HOR,kin}} \right)^{-1} \quad (16b)$$

Setting $\theta = 0$ in equation (12a), i.e. $C = 0$, yields the same result. (The other possibility that corresponds to $C = 0$, $\theta = -B/A$, always yields coverage that is either negative or higher than one, and therefore unphysical.) The terms inside the parenthesis in equation (16b) correspond to the two reasons for the catalyst surface to be devoid of hydrogen: at currents near the mass transport limit (first term) there is no H_2 in the electrolyte that could be adsorbed on the catalyst, whereas the kinetic limiting current density (second term, see also equation (14b)) corresponds to the rate at which the H_2 molecules in the electrolyte are adsorbed and dissociated to hydrogen atoms on an empty catalyst surface. Note that the mass transport losses are determined by the mass transport limitation (equation (7)), not the total limiting current density.

From equation (16b) we see that, when considering the HOR limiting current density, the mass transport and kinetic limits can be considered independently only, when either limiting current density is significantly higher than the other and the HOR limiting current density is (approximately) equal to the lower limitation. This dependence of the total limiting current density on the reaction kinetics and mass transport is analogous to the Koutecky-Levich equation²⁶ and it has been observed in both theoretical and experimental studies (e.g. 28,29,32,33,48). However, equation (16b) is limited to the HOR limiting current density of the V-T mechanism, and is not applicable to the limiting current densities in general. Additionally, unlike in the typical application of the Koutecky-Levich analysis, we did not neglect the effect of the reverse reaction or the hydrogen coverage in the derivation of equation (16b), so the errors associated with those simplifications do not affect our results^{30,49}.

The total limiting current densities calculated with the simulation parameters in Table 1 are shown in Figure 3. With low catalyst surface ratios, the electrode is limited by the reaction kinetics and with sufficiently high loadings by mass transport. In addition, there is also an intermediate region (in our case the f_{surf} range between 10^{-4} and 0.01) where the total current density limitation is noticeably lower than either limit alone. The largest difference occurs when the kinetic and mass transport limitations are approximately equal to each other ($i_{lim,HOR,kin} \approx i_{lim,H_2}$), in which case the combined limiting current density $i_{lim,HOR,VT}$ is about one half of the individual limits. The difference between figures 3A and 3B is the current density normalization. When current density per electrode area is considered (A), the mass transport limitation is independent of the amount of catalyst, whereas in the case of the current density per catalyst area (B), the kinetic limit is constant and mass transport limit depends on f_{surf} (as equation (1) indicates). Note that because in the model the mass transport limit arises purely from the 1D mass transport, which has a constant limit per electrode surface area (Figure 3A), the mass transport limit calculated per catalyst surface area (Figure 3B) tends to infinity as f_{surf} , and thereby the catalyst area, approaches zero (i.e. constant divided by zero). However, as this happens also the average distance between the catalyst particles becomes large and eventually similar to the diffusion layer thickness, breaking the assumption that the transport can be considered mainly one-dimensional. This leads to a situation where the transport limitation may be considered as a combination of spherical and 1D mass transport limits, which could possibly be expressed in the same fashion as equation (16b), as Montero et al.²⁴ did.

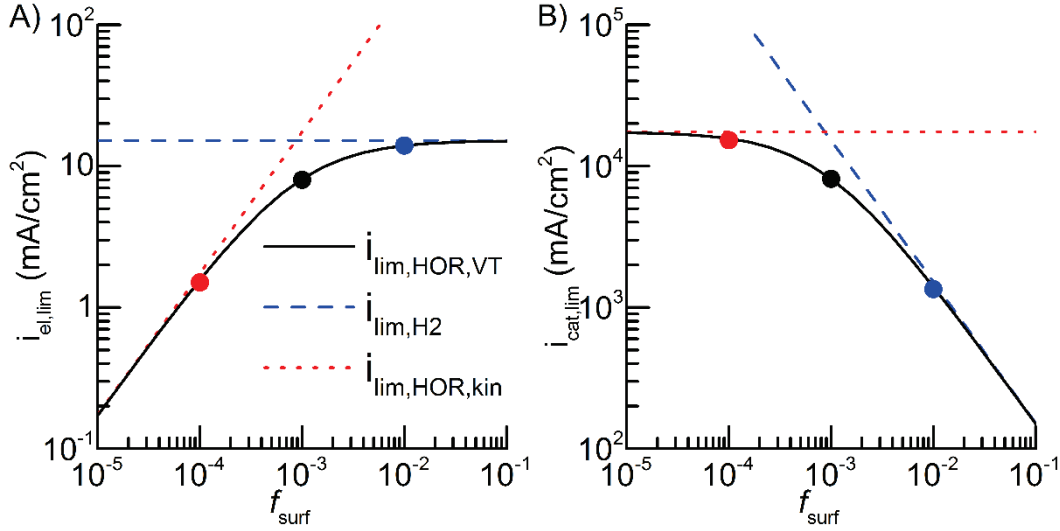


Figure 3. The limiting current densities in equation (16b) as a function of f_{surf} in A) current density per electrode area and B) current density per catalyst area. Note the different vertical axis scales. Simulation parameters are given in Table 1. The filled circles mark the points where the current limitation transitions from kinetic control (red, $f_{\text{surf}} = 10^{-4}$) to mass transport control (blue, $f_{\text{surf}} = 10^{-2}$), and the intermediate region where the current is limited both by the kinetics and mass transport (black, $f_{\text{surf}} = 10^{-3}$). These three characteristic cases can be identified also in the other figures as red, blue and black curves, respectively (Figure 5, 6, 7 and 8).

3.7. Simplified, analytical solutions

So far we have discussed the interdependence of the current density and the hydrogen coverage of the catalyst together with the limiting current densities. As mentioned in Section 3.3., we solve the overpotential from the Volmer current density (equation (5)) after the current density and the hydrogen coverage are solved. Although the exact solution must be obtained numerically, we can derive analytical expressions for the overpotential in the micropolarization region and “Tafel-equations” for high negative and positive current densities, similarly to how the corresponding expressions are derived from the B-V equation (Chapter 3.4.3 in ²⁶). For the micropolarization range this gives

$$\eta'_{\mu} = 2 \frac{\frac{i_{el}}{f_{\text{surf}} i_{0,V}} \frac{\theta}{\theta^0} + \frac{c_{H^+}^b}{c_{H^+}^0} \left(1 - \frac{i_{el}}{i_{\text{lim},H^+}}\right) \left(\frac{1-\theta}{1-\theta^0}\right)}{\frac{\theta}{\theta^0} + \frac{c_{H^+}^b}{c_{H^+}^0} \left(1 - \frac{i_{el}}{i_{\text{lim},H^+}}\right) \left(\frac{1-\theta}{1-\theta^0}\right)} \quad (17a)$$

The Tafel-equations for high negative and positive overpotentials are, respectively

$$\eta'_{\text{HER}} = -2 \ln \left(\frac{-i_{el}}{f_{\text{surf}} i_{0,V} \frac{c_{H^+}^b}{c_{H^+}^0} \left(1 - \frac{i_{el}}{i_{\text{lim},H^+}}\right) \left(\frac{1-\theta}{1-\theta^0}\right)} \right) \quad (17b)$$

$$\eta'_{\text{HOR}} = 2 \ln \left(\frac{i_{el} \theta^0}{f_{\text{surf}} i_{0,V} \theta} \right) \quad (17c)$$

The last expression (equation (17c)) is not needed, if f_{surf} and $i_{0,V}$ are high enough compared with $i_{\text{lim},\text{HOR},\text{VT}}$ that the limiting current density is achieved already in the micropolarization region, which equation (17a) describes accurately (Section 4.2.). As discussed in Section 3.3., θ is a function of the current density (equations (12) and (15)), or current density a function of

θ although neither possibility is expressed in equation (17). In all our calculations, we have used either equation (11) or (12), thus the effect of the reaction kinetics is not neglected, as in equation (15). In the general form, without writing out the current density dependence on the surface concentrations (or any other dependencies of the physical quantities and simulation parameters), equations (17a) and (17b) would be

$$\eta'_{\mu} = 2 \frac{\frac{i_{el}}{f_{surf} i_{0,V}} \frac{\theta}{\theta^0} + \frac{c_{H^+}}{c_{H^+}^0} \left(\frac{1-\theta}{1-\theta^0} \right)}{\frac{\theta}{\theta^0} + \frac{c_{H^+}}{c_{H^+}^0} \left(\frac{1-\theta}{1-\theta^0} \right)} \quad (18a)$$

$$\eta'_{HER} = -2 \ln \left(\frac{-i_{el} c_{H^+}^0}{f_{surf} i_{0,V} c_{H^+}} \left(\frac{1-\theta^0}{1-\theta} \right) \right) \quad (18b)$$

If we can assume that $\theta \approx \theta^0$ and $c_{H^+} \approx c_{H^+}^0$, HER/HOR is described accurately by the concentration-independent B-V equation, and these expressions are simplified to the more familiar forms that depend only on the current density and the exchange current density (including f_{surf}). Equation (15) suggests that in the micropolarization range the hydrogen coverage is approximately constant, if the current density remains small compared with the H_2 transport limitation, so the micropolarization range can probably be described with the simplified expression (the first term of the nominator in equation (17a)), if the electrode is not mass transport limited. Additionally, although in general the Tafel slope of the HER overpotential is not necessarily 120 mV/decade (at room temperature, i.e. $\eta'/2$ in the exponent in the B-V equation, as in equation (4b)), it may be approximately equal to that up to some overpotential that depends on how rapid the mass transport is (both protons and H_2 through the surface hydrogen coverage).

4. Results and discussion

4.1. Comparison with 2D simulations

As can be seen in Figure 4, the analytical 1D model described in Section 3. matches accurately the 2D simulations with the model introduced in ¹, for the whole catalyst loading range from 0.01 ng/cm² ($f_{surf} \approx 5.3 \cdot 10^{-6}$) to 1000 ng/cm² ($f_{surf} \approx 0.53$), except for the high HOR overpotentials and low catalyst loadings (1.0 ng/cm² or less). The match between the HER overpotentials is excellent, but at high overpotentials, the HOR limiting current densities differ, because at catalyst loadings below 1.0 ng/cm² ($f_{surf} \approx 5.3 \cdot 10^{-4}$) the distance between the particles and its effect on the mass transport cannot be neglected and therefore the 1D approximation is no longer accurate. Although at the lowest f_{surf} values the 1D simulations differ from the 2D simulations due to inaccurate treatment of mass transport, the reduction in the HOR limiting current density, when f_{surf} is reduced, is due to the reduced kinetic limiting current density (Figure 3A and equation (16b)), not mass transport.

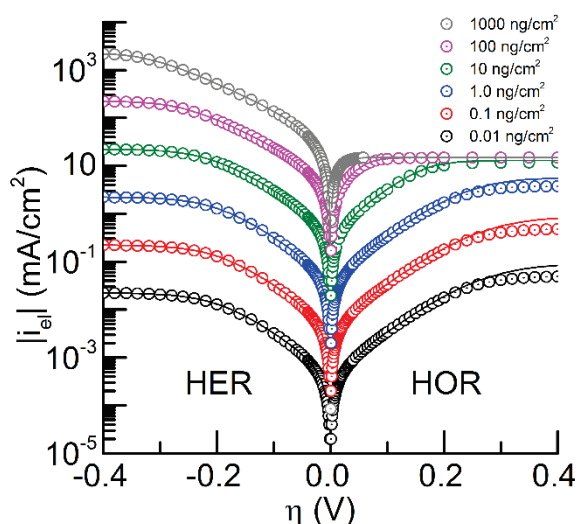


Figure 4. The current density – overpotential –curves ($i\eta$ -curves) for different Pt loadings simulated with the 1D model (lines, equation (5) and (11)) compared with the 2D simulations (markers) ¹. The colors indicate the different Pt loadings.

Assuming that the mass transport behaves as described in the model in ²⁴, the spherical diffusion becomes a significant factor, when its limiting current density becomes similar to the 1D limitation. The HOR mass transport limit for a hemispherical particle can be calculated from the well-known formula ^{23,26}. For a particle with a 5 nm diameter ($D_{H_2} = 5.11 \cdot 10^{-5} \text{ cm}^2/\text{s}$ and $c_{H_2} = 0.77 \text{ mM}$) this limit is about $3.1 \cdot 10^4 \text{ mA}/\text{cm}^2$ per catalyst area. Because in our case almost the entire particle is exposed, the mass transport limitation per catalyst surface area would be about half of this, which coincidentally is approximately equal to the kinetic limitation with our simulation parameters (Figure 3B). Therefore, the 1D and hemispherical mass transport limitations would be approximately equal when $f_{\text{surf}} \approx 10^{-3}$ (Figure 3B). Considering that the HOR limiting current density of the 1D model becomes inaccurate between $1.0 \text{ ng}/\text{cm}^2$ ($f_{\text{surf}} \approx 5.3 \cdot 10^{-4}$) and $10 \text{ ng}/\text{cm}^2$ ($f_{\text{surf}} \approx 5.3 \cdot 10^{-3}$, Figure 4), the comparison of the hemispherical mass transport limitation to the 1D limitation is probably a good criterion for estimating the lower limit of the f_{surf} range where the 1D model is accurate, although the size of the spherical mass transport region (and therefore its limiting current density ²⁴) depends on f_{surf} . Because the limiting current density of the spherical mass transport depends on the particle size, also the f_{surf} range where our model is valid depends on it, with smaller particles allowing accurate simulations about lower catalyst surface area fractions. Intuitively, this can be understood so that smaller particles disperse a given surface area to more particles, creating a more homogeneous catalyst distribution. At the other extreme, if the same catalyst surface area corresponds to a single larger particle on the electrode surface, certainly mass transport must be considered in detail.

Note that the point, where the 1D model becomes inaccurate depends on the 1D mass transport limitation, lower limiting current densities (i.e. thicker diffusion layer) being accurate at lower f_{surf} values. The reaction kinetics also affects the accuracy of the 1D model: In general, slower reaction kinetics (lower exchange current density) correspond to a lower kinetic limiting current density. Therefore, when the reaction kinetics is sufficiently slow, the mass transport limitation can be neglected entirely (Figure 3B and equation (16b)). For the HER/HOR, Pt in acid is therefore an extreme case, because the exchange current density, and thus probably also the kinetic limitation is the highest of the known catalyst materials, and therefore the results are more sensitive to the inaccuracies of the mass transport model than with any other catalyst.

The excellent match between the 1D and 2D model means that the 1D model is accurate enough to describe the steady state behavior of these nanoparticle electrodes, especially for the HER. The match also implies that it should be possible to accurately extend 1D models derived originally for planar catalyst electrodes to describe also electrodes partially covered with catalyst particles, by scaling the exchange current density of those models with the catalyst surface area fraction that depends on the catalyst loading. Because of the excellent agreement in Figure 4, we use only the 1D model in the rest of the paper.

4.2. The Micropolarization range and the Tafel equations

Figure 5 compares the simplified solutions for the micropolarization range and Tafel-equation (equation (17)), with the full 1D solution of the current density – overpotential –curve ($i\eta$ -curve). In all cases, the micropolarization curve is accurate when $|\eta| < 50$ mV, and the Tafel-equations are accurate for $|\eta| > 100$ mV. It is not evident from Figure 5, but the Tafel slope of the HER branch at high overpotentials (when current is not yet limited by the kinetics or proton transport) increases as the current density increases. For example, in the case of $f_{\text{surf}} = 0.01$ the slope is approximately 120 mV/decade up to about -0.12 V vs RHE and at about -0.15 V vs RHE it is approximately 150 mV/decade. Since the hydrogen coverage decreases with increasing current density, there are less free sites for proton adsorption when the HER rate increases. (The HER corresponds to the negative currents and HOR to positive.) Therefore (the absolute value of) the overpotential for a given current is higher than a coverage-independent B-V equation would predict, corresponding to an increased Tafel-slope. Ultimately, the current density may become limited by the reaction kinetics rather than proton transport (Section 3.6.), as the f_{surf} values $10^{-4} - 0.1$ illustrate.

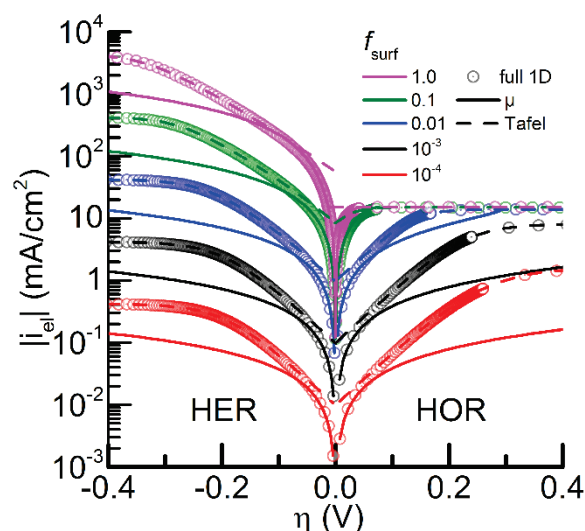


Figure 5. Comparison of the expression for the micropolarization range (μ , solid lines, equation (17a)) and Tafel equations (dashed lines, equations (17b) and (17c)) with the full 1D solution (markers, equation (5)). Colors of the lines and markers indicate the value of f_{surf} .

4.3. HOR limiting current density

As equation (7) illustrates, the H_2 transport limitation is a crucial parameter, also when considering the HER, because it is the main descriptor of the mass transport losses. Since in the case of the V-T mechanism, the HOR limiting current density does not necessarily correspond to the H_2 transport limitation, it may be possible to misestimate the mass transport limitation by assuming it to be equal to the measured HOR limiting current density. This could lead to erroneous estimates of the mass transport losses and kinetic overpotential. We

therefore discuss this detail of the reaction kinetics, and the effect of the catalyst loading on it in the following.

Figure 6A shows that the hydrogen coverage decreases sharply as the current density (i_{el}) approaches the value of equation (16) ($i_{lim.HOR.VT}$). This is true with both the low ($f_{surf} < 10^{-4}$) and high ($f_{surf} > 10^{-2}$) catalyst surface area ratios. Most importantly, the predicted limiting current density holds also in the intermediate range of f_{surf} values, where the kinetic and mass transport limitations are similar to each other ($i_{lim.HOR,kin} \approx i_{lim,H2}$) and significantly higher than the combined limit $i_{lim.HOR.VT}$ (Figure 3). For example, in the case $f_{surf} = 10^{-3}$ the mass transport limit has value 1.87 and the kinetic limit value 2.15 in the normalized current density scale of Figure 6. The fact that the overpotential increases rapidly at this limit, even in the intermediate case $f_{surf} = 10^{-3}$ (Figure 6B), confirms that the HOR current density is limited by the combination of the reaction kinetics and mass transport.

When the current density per catalyst area (i_{cat}) is considered, the 1D mass transport limitation is divided by f_{surf} , hence the limiting current density in the kinetics-limited low f_{surf} cases is significantly higher than in the mass transport limited cases (Figure 3B). Therefore, contrary to what Figure 6A may initially seem to allude to, the hydrogen coverage decreases slower when f_{surf} is reduced, as also equation (15) suggests, so the related discussion about the effect of f_{surf} is not contradicted.

Figure 6B shows the normalized current density as a function of the overpotential. The curves have shapes similar to what would be expected of the combination of the classical B-V kinetics at low current densities and a sharp mass transport limitation at the high current densities (Section 3.3. in ²⁶). This is well in line with Figure 3 and 6A and the theoretical description behind them. As the catalyst surface fraction increases, the $i\eta$ -curve becomes less 'S-shaped', signifying the transition from kinetic to mass transport dominance (Figure 3). As the current density (i_{el}) tends to the limiting current density $i_{lim.HOR.VT}$, the overpotential increases sharply due to drop in the surface hydrogen coverage (equation (5)). The similarity of the shapes to the simple B-V kinetics with mass transport limitation means that it could be difficult to distinguish from experimental curves, whether their current limitation is due to mass transport or kinetics, unless the catalyst loading (surface ratio) was varied systematically in the experiment. The mass transport limited case can probably be recognized, because its $i\eta$ -curve is determined by the mass transport limit alone ^{1,16,43,44}, but other limiting current densities are likely more difficult to determine without data about several catalyst loadings.

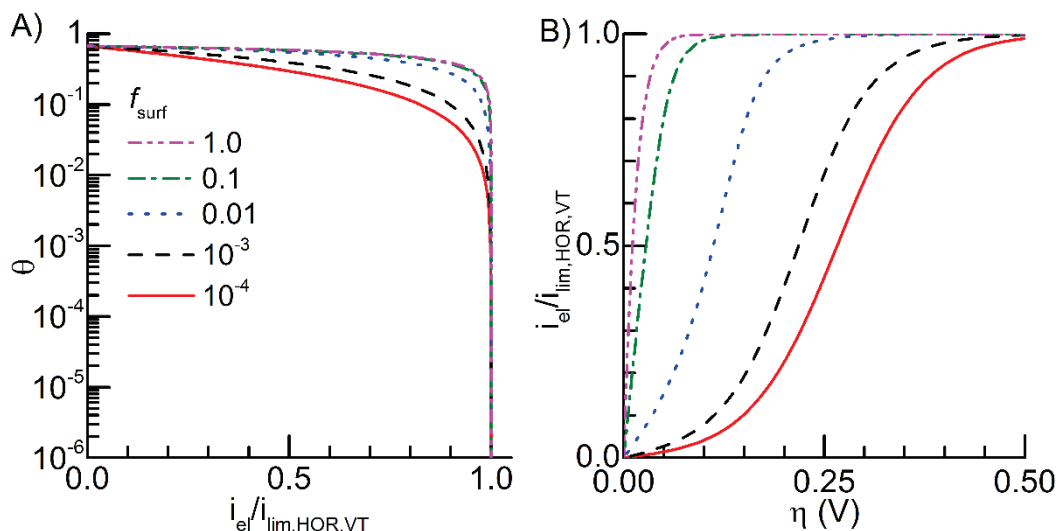


Figure 6. The hydrogen coverage of the catalyst surface for different values of f_{surf} as a function of the current density (equation (11)) normalized with the total HOR limiting current density (equation (16b)) B) The normalized $i\eta$ -curves for the same f_{surf} values that were shown in figure A). Note that in figure A) values 0.01 – 10 and in B) 1.0 and 10 overlap, hence they are not easily discernible.

4.4. Validity of the model in the general Volmer-Heyrovsky-Tafel case

So far, we have considered only the V-T path, neglecting the Heyrovsky step. Although near the equilibrium the current density of the reaction dominated by the V-T path could be described accurately without considering the V-H path, it likely affects the current density, especially at high overpotentials^{15,32,47}. Unlike the Tafel rate, the Heyrovsky rate is directly affected by the applied potential, thus its rate can be increased with the overpotential^{15,28}. Therefore, the total current density is limited only by the mass transport limitation, allowing the current density to exceed the V-T limit, which would be observed as an additional intermediate shoulder or plateau in the current $i\eta$ -curve^{15,28}.

Such shoulders in the HOR current density have been observed experimentally at least by Chen and Kucernak⁴⁸ and Elbert et al.⁴⁷. Wang et al.¹⁵ interpreted the experimental results of Chen and Kucernak⁴⁸ in this way. Although our planar electrode model differs geometrically from the single Pt particle measurement setup^{48,50}, the effects of the particle size in the measurements and f_{surf} in our model are mathematically analogous: The limiting current density of mass transport per catalyst area depends on the inverse of both the particle radius (r) and f_{surf} ^{23,26,50}, but neither of them affects the kinetic limitation.

As discussed in the previous section, the limiting current density of the V-T path depends on f_{surf} , thus also the importance of the Heyrovsky step depends on it. With sufficiently high values, the HOR is limited by the H₂ transport and the Heyrovsky step likely has little effect on the $i\eta$ -curve, whereas with small catalyst surface areas, its contribution could be significant. In the following, we analyze the effect of the Heyrovsky step in more detail using the dual pathway model that takes into account all three elementary steps^{1,15,28}. The expressions of the kinetic model were given in the supporting information of our earlier paper¹. The concentrations, hydrogen coverage and overpotential of this reaction scheme were solved numerically as a function of i_{el} .

Figure 7 shows the $i\eta$ -curves with low, but nonzero Heyrovsky exchange current density. The simulation parameters are the same as in Figure 6, except $r_{\text{H}} = 0.001$ ($r_{\text{H}} = v_{0,\text{H}}/v_{0,\text{V}}$ as defined by Wang et al.¹⁵, i.e. $i_{0,\text{H}} = 0.1 \text{ mA/cm}^2$). The aforementioned shoulder is clearly discernible in

the $i\eta$ -curves, and occurs at current density $i_{el} \approx i_{lim,HOR,VT}$ (equation (16b)) regardless of the value of f_{surf} (Figure 7A). However, as Figure 6B indicates, with extremely low catalyst surface ratios the shoulder may occur at such a low current density that noise in measured curves may limit their usefulness⁴⁸. Up to the shoulder current density the V-T approximation is accurate, as the comparison of Figures 6B and 7A shows, but it fails at the current densities that exceed $i_{lim,HOR,VT}$.

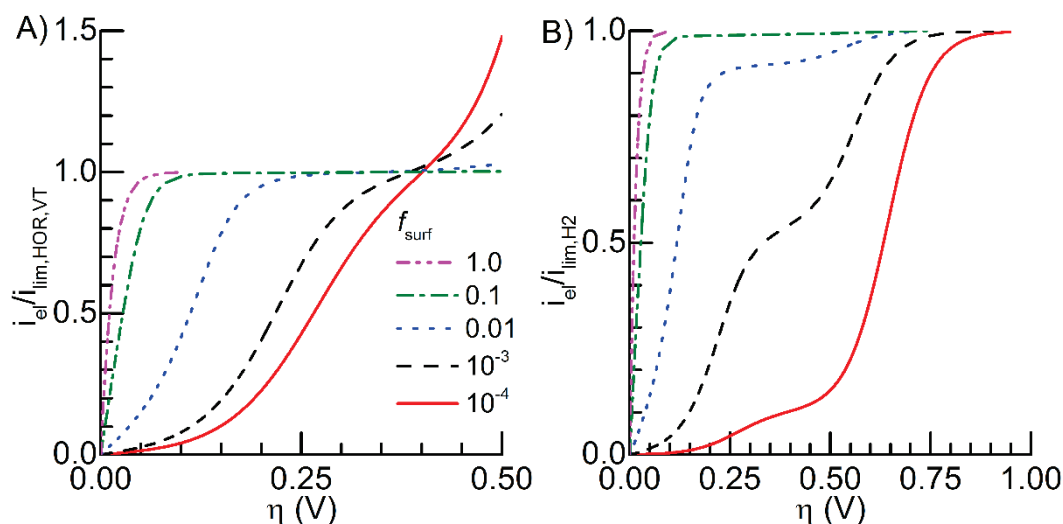


Figure 7. The HOR current densities normalized with A) the total HOR limiting current density (equation (17b)) and B) the mass transport limitation. Simulations parameters are otherwise identical to Figure 6, except $r_H = 0.001$.

With the lowest f_{surf} values (10^{-4} and 10^{-3}) the V-T limiting current density ($i_{lim,HOR,VT}$) is reached approximately at the same potential around 0.4 V vs RHE. Because in the case of 10^{-4} the current density at this potential is approximately equal to the kinetic limiting current density of the V-T path (Figure 3), the overpotential decreases with increasing f_{surf} . However, for all smaller f_{surf} values the overpotential is approximately constant, because they, too, are kinetics limited and the shoulder corresponds to the same current density per catalyst area. The constant shoulder overpotential might help to distinguish the kinetics limited measurements from those affected by the mass transport. The shoulder potential naturally depends also on the reaction kinetics and, for instance, in the results of Chen and Kucernak⁴⁸ the shoulder occurred at about 0.1 V vs RHE.

Figure 8 shows how the catalyst surface fraction affects the dependence of the hydrogen coverage on the current density. The shoulder clearly appears also here at $i_{el} = i_{lim,HOR,VT}$ in all the cases, and as in the $i\eta$ -curves (Figure 7), it is the smoothest with the lowest catalyst surface ratios, but turns sharply to a plateau at the high f_{surf} values. The shape of the curve depends on the relative magnitude of the mass transport limit $i_{lim,H2}$ compared with $i_{lim,HOR,VT}$, similarly to the current density in Figure 7. Increasing the catalyst surface fraction steepens the shoulder, and improves the accuracy of equation (16b), because a sufficiently high f_{surf} makes the shoulder current density mass transport limited, and prevents its further increase. In this case $f_{surf} \geq 0.1$ are mass transport limited. Decreasing the Heyrovsky exchange current density would have a similar effect, because the fraction of the total current density that corresponds to the V-T path would be increased, thereby improving the accuracy of the V-T approximation and eventually leading to results similar to those in Figure 6.

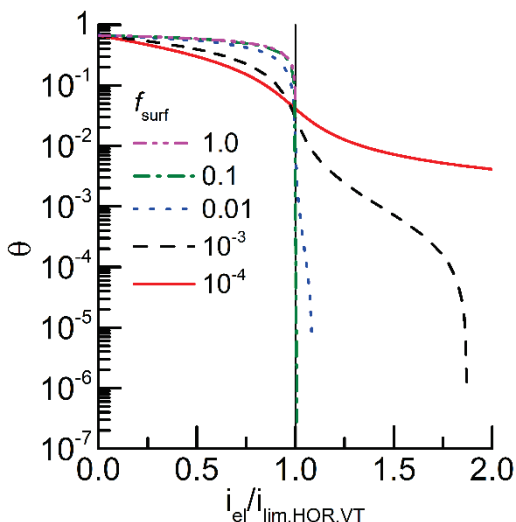


Figure 8. The effect of the catalyst surface fraction f_{surf} on the hydrogen coverage of the catalyst surface as a function of the normalized current density. The simulation parameters are the same as in the $i\eta$ -curves in Figure 6. When $f_{\text{surf}} \leq 0.01$, the mass transport limitation is higher than the total V-T limiting current density (the vertical line).

5. Conclusions

We showed the general applicability of 1D models for planar electrodes with a wide range of catalyst surface areas. Although our mass transport model does not describe very sparse catalyst arrays accurately, the inaccuracies are limited to the HOR near the limiting current density. With catalyst loadings that are practical for solar energy conversion, the 1D model is as accurate as the full 2D model. Phenomenologically this means that the region of spherical mass transport near the particles can be neglected, which simplifies the mathematical analysis. In general, the operation of the planar nanoparticle array electrodes combines features from both the planar electrodes and the single-particle electrodes. We showed how these cases can be used in a complementary way to model and analyze the operation of the catalyst arrays by considering the current density per electrode or catalyst area.

Focusing on the special case of HER/HOR on Pt, we derived an analytical model for the electrode that takes into account also the surface hydrogen coverage of the catalyst. The usefulness of the hydrogen coverage as the starting point for the analysis of limiting current densities was also demonstrated. This method could be especially useful for reaction mechanisms that are limited by a combination of the reaction kinetics and mass transport similarly to HOR via V-T. Although this current density is not the limiting current density of the whole reaction when also the Heyrovsky step contributes to the current density, it can be observed as a shoulder or a plateau in the $i\eta$ -curve. By simplifying the expression of the current density of the Volmer step, we derived analytical expressions for the micropolarization and high overpotential ranges of the $i\eta$ -curve. Although neither simplified solution describes the overpotential range from 50 mV to 100 mV well, both are accurate in the overpotential ranges, where their underlying assumptions about the overpotential are valid.

Because the 1D model is built on analytical expressions, it is not only computationally light, but also readily applicable to the analysis of experimental results. By showing the validity of the catalyst surface area –based approach for partially covered electrodes, we also showed that the partially covered electrodes can be studied with 1D models for planar electrodes that couple mass transport and reaction kinetics together. With an example case, we demonstrated how the analysis is performed in practice by varying the exchange current density or the

limiting current density of the mass transport, depending on the used current density normalization.

Acknowledgements

This work was funded by Nordic Energy Research within the project Nordic Initiative for Solar Fuel Development (NISFD).

References

- 1 E. Kemppainen, A. Bodin, B. Sebok, T. Pedersen, B. Seger, B. Mei, D. Bae, P. C. K. Vesborg, J. Halme, O. Hansen, P. D. Lund and I. Chorkendorff, *Energy Environ. Sci.*, 2015, **8**, 2991–2999.
- 2 E. Kemppainen, J. Halme, O. Hansen, B. Seger and P. D. Lund, *Int. J. Hydrogen Energy*, 2016. DOI: 10.1016/j.ijhydene.2015.12.207
- 3 M. Carmo, D. L. Fritz, J. Mergel and D. Stolten, *Int. J. Hydrogen Energy*, 2013, **38**, 4901–4934.
- 4 P. C. K. Vesborg and T. F. Jaramillo, *RSC Adv.*, 2012, **2**, 7933–7947.
- 5 *Fuel Cell Handbook*, U.S. Department of Energy, Morgantown, West Virginia, 7th edn., 2004.
- 6 J. Lee, B. Jeong and J. D. Ocon, *Curr. Appl. Phys.*, 2013, **13**, 309–321.
- 7 J. R. Bolton, S. J. Strickler and J. S. Connolly, *Nature*, 1985, **316**, 495–500.
- 8 S. Hu, C. Xiang, S. Haussener, A. D. Berger and N. S. Lewis, *Energy Environ. Sci.*, 2013, **6**, 2984–2993.
- 9 L. C. Seitz, Z. Chen, A. J. Forman, B. A. Pinaud, J. D. Benck and T. F. Jaramillo, *ChemSusChem*, 2014, **7**, 1372–1385.
- 10 H. Döscher, J. Geisz, T. Deutsch and J. A. Turner, *Energy Environ. Sci.*, 2014, **7**, 2951–2956.
- 11 N. P. Dasgupta, C. Liu, S. Andrews, F. B. Prinz and P. Yang, *J. Am. Chem. Soc.*, 2013, **135**, 12932–12935.
- 12 Y. Chen, K. Sun, H. Audesirk, C. Xiang and N. S. Lewis, *Energy Environ. Sci.*, 2015, **8**, 1736–1747.
- 13 L. Ji, M. D. McDaniel, S. Wang, A. B. Posadas, X. Li, H. Huang, J. C. Lee, A. A. Demkov, A. J. Bard, J. G. Ekerdt and E. T. Yu, *Nat. Nanotechnol.*, 2015, **10**, 84–90.
- 14 H. A. Gasteiger, J. E. Panels and S. G. Yan, *J. Power Sources*, 2004, **127**, 162–171.
- 15 J. X. Wang, T. E. Springer and R. R. Adzic, *J. Electrochem. Soc.*, 2006, **153**, A1732–A1740.
- 16 J. Durst, C. Simon and H. A. Gasteiger, *J. Electrochem. Soc.*, 2015, **162**, F190–F203.
- 17 M. Secanell, K. Karan, A. Suleman and N. Djilali, *J. Electrochem. Soc.*, 2008, **155**, B125–B133.
- 18 P. R. F. Barnes, A. Y. Anderson, J. R. Durrant and B. C. O'Regan, *Phys. Chem. Chem. Phys.*, 2011, **13**, 5798–5816.
- 19 W. Du, N. Xue, W. Shyy and J. R. R. A. Martins, *J. Electrochem. Soc.*, 2014, **161**, E3086–E3096.
- 20 T. J. Mills, F. Lin and S. W. Boettcher, *Phys. Rev. Lett.*, 2014, **112**, 148304.

- 21 K. Aoki, *Electroanalysis*, 1993, **5**, 627–639.
- 22 H. Reller, E. Kirowa-Eisner and E. Gileadi, *J. Electroanal. Chem. Interfacial Electrochem.*, 1982, **138**, 65–77.
- 23 T. J. Davies and R. G. Compton, *J. Electroanal. Chem.*, 2005, **585**, 63–82.
- 24 M. A. Montero, M. R. Gennero de Chialvo and A. C. Chialvo, *Electrochim. Acta*, 2010, **56**, 756–761.
- 25 A. Berger and J. Newman, *J. Electrochem. Soc.*, 2014, **161**, E3328–E3340.
- 26 A. J. Bard and L. R. Faulkner, *Electrochemical Methods: Fundamentals and Applications*, WILEY-VCH Verlag, 2001.
- 27 A. M. Chaparro, *J. Electrochem. Soc.*, 2014, **161**, E3078–E3085.
- 28 M. R. Gennero de Chialvo and A. C. Chialvo, *Phys. Chem. Chem. Phys.*, 2004, **6**, 4009–4017.
- 29 P. M. Quaino, M. R. Gennero de Chialvo and A. C. Chialvo, *Phys. Chem. Chem. Phys.*, 2004, **6**, 4450–4455.
- 30 P. M. Quaino, M. R. Gennero de Chialvo and A. C. Chialvo, *Electrochim. Acta*, 2007, **52**, 7396–7403.
- 31 J. X. Wang, T. E. Springer, P. Liu, M. Shao and R. R. Adzic, *J. Phys. Chem. C*, 2007, **111**, 12425–12433.
- 32 S. A. Vilekar, I. Fishtik and R. Datta, *J. Electrochem. Soc.*, 2010, **157**, B1040–B1050.
- 33 M. D. Arce, H. L. Bonazza and J. L. Fernández, *Electrochim. Acta*, 2013, **107**, 248–260.
- 34 T. Shinagawa, A. T. Garcia-Esparza and K. Takanabe, *Sci. Rep.*, 2015, **5**, 13801.
- 35 M. R. Gennero de Chialvo and A. C. Chialvo, *Electrochim. Acta*, 1998, **44**, 841–851.
- 36 K. Aoki, H. Toda, J. Yamamoto, J. Chen and T. Nishiumi, *J. Electroanal. Chem.*, 2012, **668**, 83–89.
- 37 P. J. Rheinländer, J. Herranz, J. Durst and H. A. Gasteiger, *J. Electrochem. Soc.*, 2014, **161**, F1448–F1457.
- 38 J. Durst, A. Siebel, C. Simon, F. Hasché, J. Herranz and H. A. Gasteiger, *Energy Environ. Sci.*, 2014, **7**, 2255–2260.
- 39 C. M. Zalitis, J. Sharman, E. Wright and A. R. Kucernak, *Electrochim. Acta*, 2015, **176**, 763–776.
- 40 R. C. Rossi and N. S. Lewis, *J. Phys. Chem. B*, 2001, **105**, 12303–12318.
- 41 C. Tsai, F. Abild-Pedersen and J. K. Nørskov, *Nano Lett.*, 2014, **14**, 1381–1387.
- 42 A. Bruix, J. A. Rodriguez, P. J. Ramírez, S. D. Senanayake, J. Evans, J. B. Park, D. Stacchiola, P. Liu, J. Hrbek and F. Illas, *J. Am. Chem. Soc.*, 2012, **134**, 8968–8974.
- 43 J. Zheng, Y. Yan and B. Xu, *J. Electrochem. Soc.*, 2015, **162**, F1470–F1481.
- 44 W. Sheng, H. A. Gasteiger and Y. Shao-Horn, *J. Electrochem. Soc.*, 2010, **157**, B1529–B1536.
- 45 W. M. Haynes, Ed., *CRC Handbook of Chemistry and Physics*, CRC Press, 95th edn.,

- 2014.
- 46 N. M. Markovic and P. N. J. Ross, *Surf. Sci. Rep.*, 2002, **45**, 117–229.
 - 47 K. Elbert, J. Hu, Z. Ma, Y. Zhang, G. Chen, W. An, P. Liu, H. S. Isaacs, R. R. Adzic and J. X. Wang, *ACS Catal.*, 2015, **5**, 6764–6772.
 - 48 S. Chen and A. R. Kucernak, *J. Phys. Chem. B*, 2004, **108**, 13984–13994.
 - 49 F. J. Vidal-Iglesias, J. Solla-Gullón, V. Montiel and A. Aldaz, *Electrochem. commun.*, 2012, **15**, 42–45.
 - 50 S. Chen and A. Kucernak, *J. Phys. Chem. B*, 2003, **107**, 8392–8402.