



Swatridge, Christopher J. and Monadjem, Ara and Steyn, David J. and Batchelor, Garth R. and Hardy, Ian C.W. (2014) Factors affecting diet, habitat selection and breeding success of the African Crowned Eagle *Stephanoaetus coronatus* in a fragmented landscape. *Ostrich: Journal of African Ornithology*, 85 (1). pp. 47-55. ISSN 1727-947X

Access from the University of Nottingham repository:

<http://eprints.nottingham.ac.uk/41507/1/Crowned%20eagle%20Accepted%20MS.pdf>

Copyright and reuse:

The Nottingham ePrints service makes this work by researchers of the University of Nottingham available open access under the following conditions.

This article is made available under the University of Nottingham End User licence and may be reused according to the conditions of the licence. For more details see: http://eprints.nottingham.ac.uk/end_user_agreement.pdf

A note on versions:

The version presented here may differ from the published version or from the version of record. If you wish to cite this item you are advised to consult the publisher's version. Please see the repository url above for details on accessing the published version and note that access may require a subscription.

For more information, please contact eprints@nottingham.ac.uk

1 **Factors affecting diet, habitat selection and breeding success of the African Crowned Eagle**
2 **(*Stephanoaetus coronatus*) in a fragmented landscape**

3

4 CHRISTOPHER J. SWATRIDGE¹, ARA MONADJEM^{2,3*}, DAVID J. STEYN⁴, GARTH R.
5 BATCHELOR⁵ & IAN C.W. HARDY¹

6 ¹*School of Biosciences, University of Nottingham, Sutton Bonington Campus, Loughborough,*
7 *Leicestershire, LE12 5RD, UK.*

8 ²*All Out Africa Research Unit, Department of Biological Sciences, University of Swaziland,*
9 *Private Bag 4, Kwaluseni, Swaziland.*

10 ³*Mammal Research Institute, Department of Zoology & Entomology, University of Pretoria,*
11 *Private Bag 20, Hatfield 0028, Pretoria, South Africa.*

12 ⁴*PO Box 509, Kenton-on-Sea, 6191, South Africa.*

13 ⁵*13 Neil Street, Steiltes, Nelspruit, 1200, South Africa.*

14 *Corresponding Author.

15 Email: ara@uniswa.sz

16 Published 15/5/2014

To cite this article: Christopher J Swatridge, Ara Monadjem, David J Steyn, Garth R Batchelor & Ian CW Hardy (2014)
Factors affecting diet, habitat selection and breeding success of the African Crowned Eagle *Stephanoaetus coronatus* in a
fragmented landscape, *Ostrich: Journal of African Ornithology*, 85:1, 47-55, DOI: [10.2989/00306525.2014.896832](https://doi.org/10.2989/00306525.2014.896832)

To link to this article: <http://dx.doi.org/10.2989/00306525.2014.896832>

17

1 This study aimed to identify variables that affect habitat selection and nesting success of the
2 African Crowned Eagle (*Stephanoaetus coronatus*), the largest forest raptor, in north-eastern South
3 Africa. A preference for nesting in the Northern Mistbelt Forest vegetation type was established,
4 and 82% of all nests were placed in indigenous trees. Nest abandonment was less common when
5 distances to the nearest neighbour were greater. The diet of this species was investigated by
6 examination of prey remains beneath nests and verified by comparison with museum specimens.
7 In total, 156 remains were found, representing a minimum of 75 prey individuals. The diet of
8 African Crowned Eagles constituted almost entirely of mammals (99%), which were
9 predominantly antelopes (61%) and monkeys (25%). It was also found that the proportion of
10 primates in the diet correlates with latitude: populations in equatorial latitudes have a higher
11 proportion of primates in their diets while further south antelopes are a much more common diet
12 component.

13

14 **Keywords:** African Crowned Eagle, habitat fragmentation, breeding success, diet, geographical
15 variation

16

1 **Introduction**

2

3 Large avian and mammalian carnivores are thought to be more vulnerable to local extinction in
4 fragmented habitats due to their low numbers, relatively large ranges and direct anthropogenic
5 persecution (Noss et al. 1996, Thiollay 2006). Larger body sized species demand larger home
6 ranges (Cardillo et al. 2005), which brings individuals belonging to larger species living in
7 fragmented habitats into greater contact with humans. Human-induced population declines may
8 be as a result of direct mortality of adults or as a reduction in breeding success. Breeding success
9 can potentially be influenced by many factors, such as prey availability, population density, habitat
10 quality, and meteorological conditions, and additionally by many anthropogenic factors, such as
11 habitat destruction and afforestation with exotic timber (Allan et al. 1997). Exotic timber
12 plantations cover an increasingly large area of South Africa where their effects on nesting bird
13 species are largely unknown (Allan et al. 1997, Malan and Robinson 2001). The use of exotic tree
14 species in forestry plantations may enhance breeding success for tree-nesting raptors, by providing
15 suitable trees for nesting (Malan and Robinson 2001) but may also reduce success via a reduction
16 in biodiversity i.e. food availability (Johns 1993). The effect of afforestation on the breeding
17 success of the African Crowned Eagle (*Stephanoaetus coronatus*) is currently unknown.

18

19 The African Crowned Eagle is the largest eagle throughout most of its range in sub-Saharan Africa.
20 It has declined in parts of southern Africa where it is listed as Near Threatened (Barnes 2000) or
21 Vulnerable (Swaziland, Monadjem et al 2003, Monadjem and Rasmussen 2008). However, this
22 species is likely facing persecution over much of its range (Thomsett 2011). For example, it is

1 specifically targeted by hunters in the Ebo forest, Cameroon (Whytock and Morgan 2010a,
2 Whytock and Morgan 2010b) and appears in fetish markets in West Africa (Nikolaus 2001).

3
4 The diet of the African Crowned Eagle has been shown to consist primarily of medium-sized
5 mammals, particularly primates, smaller antelope and rock hyraxes, with a range of birds and
6 reptiles preyed upon much less frequently (Brown 1976, Daneel 1979, Jarvis et al. 1980, Tarboton
7 and Allan 1984, Skorupa 1989, Struhsaker and Leakey 1990, Boshoff et al. 1994, Mitani et al.
8 2001, Shultz 2002, Shultz and Thomsett 2007). There is, however, a considerable variation in diet,
9 with some studies reporting a predominance of primates (mainly the family Cercopithecidae;
10 Skorupa 1989, Mitani et al. 2001), and others reporting a predominance of small antelopes (Brown
11 1966), hyraxes (Jarvis et al. 1980) or both (Boshoff et al. 1994). In the Tai National Park (Ivory
12 Coast), the African Crowned Eagle has been identified as the most prevalent and important
13 predator of mammals (Shultz 2002), where McGraw et al. (2006) found a preference for small
14 duikers and carnivores despite the majority of prey being primates.

15
16 In this study, we: 1) Identify the habitat requirements of the African Crowned Eagle in a
17 fragmented landscape consisting of mosaics of vegetation and land use types in north-eastern
18 South Africa; 2) Identify the dietary composition of this poorly-known population, and 3) Relate
19 diet and habitat to breeding success. Our initial hypothesis is that breeding success will be
20 negatively correlated with increasing fragmentation and neighbour distances. As our estimate of
21 dietary composition is different from that of some prior studies, we also 4) Collate diet information
22 across studies and find a relationship between prey diversity and the geographical latitude of
23 populations.

1

2 **Methods**

3 *Study population*

4 This study was conducted in the Nelspruit area (Mpumalanga province, South Africa; between 25°
5 01' and 25° 51'S, and 30° 24' 30° 32'E) from November 2008 to April 2009, covering a single
6 breeding season for the pairs that attempted to breed that year . Nelspruit is at an altitude of 670 m
7 with mean maximum temperatures in midsummer (December-February) averaging 29 °C and 23
8 °C in midwinter (June–July). Rainfall peaks in December and January (South African Weather
9 Service 2009). The study area consisted of a variety of habitats including deciduous forest,
10 savanna, forest-woodland mosaic and exotic plantations. A previous study estimated 105 breeding
11 pairs to occur in the former “Transvaal” province, which included this study area (Tarboton and
12 Allan 1984). Permission was granted by the relevant authority, to
13 undertake field studies at each location listed and we can confirm that the field studies
14 did not involve any endangered or protected species.

15

16 *Nest location data*

17 African Crowned Eagle nests are typically situated in the forks of large trees, often in remote
18 locations (Brown 1966, Steyn 1982). Nests used in this study ($n=30$) were located by local
19 landowners, or by searching on foot through areas with previous sightings of African Crowned
20 Eagles. A number of nests in this sample had been previously monitored by two of the authors and
21 pairs were found to be breeding biennially (G Batchelor and D Steyn). Each nest found was
22 classified as ‘active’ (incubating adult or chick present), ‘post-active’ (nest not containing egg or
23 chick but territory still occupied) or ‘abandoned’ (nest and territory not used in either the current

1 or the previous breeding season). Following the recommendations of Postupalsky (1973), we
2 visited each active nest at least six times during the study to monitor nesting success and the
3 behaviour of adult and juvenile eagles. Active nests were deemed successful if a chick fledged
4 from the nest.

5
6 For each nest, we recorded the species of tree it was located in, the height of the tree and the height
7 of the nest above the ground (measured using a clinometer). The location and altitude was recorded
8 using a Global Positioning System (GPS) reading taken directly underneath the nest. The distance
9 to the nearest neighbouring nest was calculated using Geographic Information System (GIS)
10 software (ArcView 3.2, Environmental Systems Research Institute); the relatively uniform inter-
11 nest distances suggest that few (if any) nests within our study area were overlooked. We
12 categorised the land use and vegetation type surrounding the nest patch (100 m around nest)
13 following Mucina and Rutherford (2006). The minimum distance from the nest to the edge of the
14 nest patch was calculated using GIS to give the shortest distance between the nest and a different
15 land use and vegetation type. Nesting site preferences were explored by comparing the observed
16 number of nests within areas of each vegetation and land use type with the numbers expected
17 according to their proportional areas, after removing types that did not contain any nests ('barren
18 rock', 'degraded', 'mines', 'pasture', 'grassland', 'urban' and 'wetland'). We explored
19 geographical and dietary influences on the probability of nest abandonment in separate analyses
20 due to only having dietary information on 15 of the nests but geographical records for all nests.

21

22 ***Prey collection and identification***

1 The 15 nests used for the dietary analysis comprised eleven that were currently active, and three
2 that had adults present in the territory but were not breeding (but had been active in the previous
3 season) and one in an abandoned territory. Prey remains were collected from below nests. Those
4 at which birds were breeding were visited between four and twelve times, whereas post-active
5 (birds attending to juvenile bird that fledged from the previous season) and abandoned nests were
6 visited just once. In each initial collection, prey remains were gathered by hand from underneath
7 the nest tree up to a radius of 10 m. The collection of prey remains from active nests was carried
8 out by stretching 6 m² (3 m × 2 m) of black shade netting directly beneath the nests in order to
9 catch any items falling from them. Netting was hung about a metre above the ground using guy
10 ropes to nearby trees, thus deterring scavengers such as bush pigs (*Potamochoerus larvatus*) and
11 black-backed jackals (*Canis mesomelas*) from eating fallen prey remains (D. Steyn personal
12 observation). The nets were erected in November at the start of the study and were taken down in
13 April when any chicks had fledged. Searching the ground surrounding the netting was continued
14 on subsequent visits and ranged from three to eight visits per nest.

15

16 Prey items were identified from skin, hair, hoof and bone fragments. To prevent multiple counting,
17 only bones that were dissimilar in appearance and decay and that were also the same type of bone
18 (e.g. left femur) were recorded as deriving from different individual prey items.

19

20 To assist in prey identification, representative samples of each major bone were studied from the
21 small mammal collection of the Ditsong National Museum of Natural History (formerly the
22 Transvaal Museum), Pretoria, South Africa. The bones of all likely prey species were
23 photographed and compared with the samples collected in this study. Skull fragments were

1 identified to species level, whilst most other bones were identified to the family level. We were
2 unable to identify the age or sex of the prey remains. We categorized the prey at each of the 15
3 nests as: predominantly (>50%) primate, predominantly antelope or no predominant prey type.

4

5 ***Inter-population dietary comparisons***

6 We collated information on the type and number of prey items consumed by African Crowned
7 Eagles from seven studies in eight populations across four different countries (Uganda, Kenya,
8 Ivory Coast and South Africa) in Southern, East and West Africa (Brown 1966, Jarvis et al. 1980,
9 Tarboton and Allan 1984, Skorupa 1989, Struhsaker and Leakey 1989, Boshoff et al. 1994, Shultz
10 2002).

11

12 For each population, Simpson's diversity index (SDI, Krebs 1999) was calculated as a descriptor
13 of prey diversity. A single linkage hierarchical cluster analysis (Krebs 1999) based on the prey
14 similarities was conducted and a dendrogram constructed as an illustration of the relative similarity
15 of the diets of the different populations. We also explored the potential relationship between prey
16 diversity and the geographical latitude of study populations. As the importance of primates in the
17 diet of African Crowned Eagles appears to vary widely (Skorupa 1989, Brown et al. 1982), we
18 explored the relationship between the latitude of each study population and the proportion of
19 primates in the diet.

20

21 ***Data analysis***

22 We used logistic analysis (in GenStat version 11, VSN International, Hemel Hempstead, UK) to
23 explore factors affecting the probability of a nest being abandoned. A binary response was defined

1 as 1 if a nest was in an occupied territory (active and post-active nests) and 0 if it was abandoned,
2 with the binomial denominator set as 1 (Crawley 1993, 2002, Wilson and Hardy 2002). Multiple
3 explanatory variables that were highly mutually correlated were not included in the initial model
4 to avoid interpretational problems due to collinearity (Grafen and Hails 2002, Quinn and Keough
5 2002). Spearman's rank correlation was used to identify correlations between variables, leading to
6 the exclusion of patch edge distance which was correlated with land patch area ($r_s = 0.766$, $P <$
7 0.001). Initially, main effects and those first order interactions that could be included without
8 aliasing were fitted. None of the interaction terms were significant so we present the results
9 deriving from the analysis of an initial model containing main effects only.

10

11 We also performed a logistic analysis on those nests that were active during our study season. A
12 binary response for nesting success was defined as 1 for a pair that raised a chick to fledging and
13 0 for a pair that failed in a nesting attempt. Again, only one of each set of highly mutually correlated
14 explanatory variables was included.

15

16 Post-hoc power analyses (Quinn and Keough 2002) were used to estimate the relative power of
17 the statistical tests used, using the G*Power statistical programme (version 3.1, University of Kiel,
18 2008), to ascertain whether our tests could detect a low or medium influence of the variables. We
19 chose not to include the analysis of a large influence because if a test could not detect a small
20 difference then it would certainly not detect a large influence.

21

22 The potential relationship between prey diversity and the geographical latitude of study
23 populations was evaluated using a Spearman's rank correlation test (Zar 1984) and latitudinal

1 variation in the proportion of primates in the diet was explored using logistic regression of grouped
2 binary data corrected for over-dispersion, using an empirically estimated scale parameter, due to
3 the greatly varying total prey numbers reported in each study (Crawley 1993, Wilson and Hardy
4 2002).

5

6 **Results**

7 *Nesting sites and habitat*

8 We located a total of thirty African Crowned Eagle nests; however two were not included in the
9 analyses concerning site and habitat due to the fact that they were separated from the other nests
10 by a large, unsearched, area. Of the remaining 28 nests: six (21.4%) were in exotic trees (five
11 *Eucalyptus grandis* and one *Pinus patula*), 22 (78.6%) were in indigenous trees, and one was in
12 an unidentified tree. Indigenous nest tree species (with number of nests located) included:
13 *Breonadia salicina* (7), *Anthocleista grandiflora* (3), *Cussonia spicata* (3), *Prunus africana* (3),
14 *Harpephyllum caffrum* (1), *Podocarpus falcatus* (1), *Balanites maughamii* (1), *Celtis africana* (1),
15 *Faidherbia albida* (1), and *Ficus sycomorus* (1). Fourteen (50%) of the nests were found in
16 plantations of exotic trees, but usually within patches of indigenous forest present within the
17 plantation boundaries rather than in exotic trees themselves.

18

19 Nests were disproportionably distributed across vegetation types (Kolmogorov-Smirnov test, $D =$
20 0.4615 , $P < 0.05$; Fig. 1). Although the sample size ($n = 28$) was too small for formal utilisation-
21 availability analysis (Byers and Steinhorst 1984) the data suggest that Northern Mistbelt Forest is
22 the favoured type for nesting as this vegetation type contained a disproportionately high number

1 of African Crowned Eagle nests (Fig. 1). Nests were also disproportionately distributed across land
2 use types (Kolmogorov-Smirnov test, $D = 0.667$, $P < 0.05$; Fig. 2).

4 *Nest status*

5 Of the 28 nests used in this analysis, eight had been abandoned with no breeding attempt having
6 been made over the previous two breeding seasons (G Batchelor and D Steyn pers. obs.). At six
7 sites the nest was post-active with the parents feeding a fledged offspring from the previous
8 breeding season within the territory. The remaining 14 active nests had parents attempting to rear
9 a chick that had hatched during the study season; this does not differ significantly from the null
10 expectation of equality for a biennially (i.e. once every 24 months) breeding species (2-tailed
11 binomial test, $P = 0.115$).

12
13 For geographical variables, the probability of nest abandonment decreased with increasing
14 distance from nearest neighbour nesting site (Table 1) but was uninfluenced by land use type, patch
15 area, vegetation type or the exotic or indigenous nature of the nesting tree (Table 1). Prey
16 composition (whether the diet was predominantly primate, antelope or without a predominant prey
17 type) had no significant ($P = 0.063$) influence on the probability of nest abandonment ($G = 0.74$,
18 $d.f. = 1$, $P = 0.478$).

20 *Active nest success*

21 None of the pairs that bred during our study year had been active the previous year, leading to the
22 conclusion that the pairs in the study population were biennial breeders. Analysis of nesting
23 success, using the sub-set of 14 active and post-active nests, identified no significant influences of

1 the variables explored. One explanation for this is that small sample size ($n = 14$) greatly increased
2 the probability of type II error. Indeed, post-hoc power tests revealed that the power of our analyses
3 were lower ($n = 14$, effect size = 0.15 [medium], $P = 0.18$; and effect size = 0.02 [low], $P = 0.07$),
4 than 0.8, which is specified as a minimum level for confidence of not having committed a type II
5 error (Smith et al. 2011). We also tested the abandonment analysis (nest usage, $n = 28$) and the
6 results were similar (effect size = 0.15 [medium], $P = 0.39$; and effect size = 0.02 [low], $P = 0.09$).
7 As above, the influence of diet was only marginally non-significant, again suggesting that in the
8 future a more detailed data set may reveal an underlying ecological effect.

9

10 ***Prey remains at nests***

11 A minimum of 75 individuals were recognised from the 156 identifiable prey items (Table 2). Only
12 one prey individual belonged to a non-mammalian species (a monitor lizard) making the
13 mammalian component 98.7% of the individuals identified in the diet. The main prey type was
14 small antelope, of which red and grey duikers made up the bulk (52%) of the remains. This was
15 followed by monkeys and other prey remains comprised a diverse group of small carnivores,
16 rodents and hyraxes (Table 2).

17

18 During the study we made two direct observations of prey being brought to a nest. These were at
19 the same nest and the prey was a vervet monkey in both instances. Anecdotal evidence from local
20 landowners further indicated predation of a klipspringer (*Oreotragus oreotragus*), a bushbuck
21 (*Tragelaphus scriptus*) and a rock hyrax (*Procavia capensis*). These observations were, however,
22 not included in the formal analysis for methodological consistency and to avoid double-counting
23 of prey.

1

2 *Dietary analysis across Africa*

3 Across Africa, the African Crowned Eagle preys upon a wide variety of taxa but the most common
4 are from the mammalian families Cercopithecidae, Herpestidae, Procaviidae and Bovidae. The
5 Cercopithecidae was the most common prey family across all studies (38.4%), with the Bovidae
6 second (29.8%) and the Procaviidae third (13.4%). Prey compositional data (Fig. 3) indicate that
7 the study from the Ivory Coast (Shultz 2002) and the two studies from Uganda (Skorupa 1989,
8 Struhsaker and Leakey 1990) are similar in that primates (Cercopithecidae) predominate in the
9 diet. In contrast, studies conducted in South Africa (Jarvis et al. 1980, Tarboton and Allan 1984,
10 Boshoff et al. 1994) all observed that primates were less preyed upon than the Bovidae,
11 Herpestidae and Procaviidae. The cluster analysis, taking the entire range of all prey species into
12 account (Fig. 4), indicated that the two most closely similar dietary studies were from the Kibale
13 Forest, Uganda (Skorupa 1989, Struhsaker and Leakey 1990) and the populations within South
14 Africa were generally similar to each other. The study from Kenya (Brown 1966) was more similar
15 to the studies conducted further south; both having a high proportion of antelope in the diet. The
16 diet of African Crowned Eagles in the Ivory Coast (Shultz 2002) was the most dissimilar to all
17 other populations due to a large range of prey species consumed at low frequency, and with a
18 predominance of predation on primates. Indices of prey diversity (SDI) ranged between 0.23 and
19 0.69, with the lowest prey diversity observed in Ugandan populations and the highest in South
20 African populations (Fig. 3). The suggested relationship between prey diversity and geographical
21 latitude was, however, marginally non-significant ($r_s = -0.601$, $df = 6$, $P = 0.081$). In terms of the
22 proportion of primates in a population's diet, there was a highly significant increase with

1 increasing latitude, south to north (logistic regression corrected for overdispersion: $F_{(1,7)} = 91.31$,
2 $P < 0.001$, Deviance explained = 97.06%).

3

4 **Discussion**

5 In our study, 20 of the nests (78.6%) were in indigenous trees, corroborating the work of Malan
6 and Shultz (2002) and Tarboton and Allan (1984) who showed similarly high proportions of nests
7 in indigenous trees (71% and 81%, respectively). It has been shown that the critical factor for nest
8 selection by the African Crowned Eagle is access to the nest (Malan and Shultz 2002), suggesting
9 that tree structure is more important than tree species *per se*. This would explain the large variation
10 in tree species utilised as nesting sites across the species range (Tarboton and Allan 1984, Malan
11 and Shultz 2002, this study). The birds showed a marked preference for nesting in Northern
12 Mistbelt Forest despite the highly limited distribution of this vegetation zone, a result
13 foreshadowed by Tarboton and Allan (1984).

14

15 Contrary to our expectations, nest abandonment decreased with increasing neighbour distance. We
16 hypothesize that the reason for decreasing abandonment with increasing isolation could be that
17 where African Crowned Eagles are present at higher densities, they are more likely to abandon
18 nests due to the intra-specific competition. Simmons (1993) discusses this in a population of
19 Wahlberg's Eagles in Africa, finding that pairs in high densities of conspecifics produced half as
20 many young annually as those in low densities. However, Simmons (1993) found that
21 supplementary feeding of nonbreeding pairs did not induce a breeding attempt and that adaptive
22 constraint caused the decrease in reproduction. The finding that abandonment probability is
23 unrelated to land use types concurs with that of Allan et al. (1997) but contrasts with Barnes (2000)

1 who suggested that plantations are the main factor responsible for the population decline of the
2 African Crowned Eagle in South Africa, perhaps as a result of reduced foraging efficiency due to
3 the absence of their prey base in such plantations. Note, however, that in our study, most of the
4 pairs categorised (by GIS) as nesting within a plantation, had in fact located their nests within
5 patches of indigenous forest surrounded by plantation. Hence, despite the fact that the plantation
6 land use type had the highest density of nests (Fig. 2), the eagles were not actually using the
7 plantation itself for nesting.

8

9 The analysis of factors affecting the breeding success of the active nests did not produce any
10 significant results due to small sample size ($n = 14$; post-hoc power analyses showed that the
11 statistical tests were not powerful enough given the sample sizes). Hence, we suggest that more
12 research is needed to investigate these relationships further. In particular, we note that the non-
13 significant trend which suggests that the proportion of primates in the diet affects nesting success
14 may be biologically meaningful.

15

16 The nesting success of African Crowned Eagles in our study during the 2009 breeding season was
17 relatively high at 71%. Of fourteen pairs that attempted breeding, ten successfully reared a chick
18 to fledging. The fecundity of African Crowned Eagles in our study was therefore 0.36 fledged
19 offspring/pair/annum, which included pairs that did not breed (Postupalsky 1973). This compares
20 closely with 0.39 and 0.44 fledged offspring/pair/annum reported by Brown et al. (1977) and
21 Brown (1966), respectively. These rates are lower than other eagle species, for example, 1.1
22 offspring/pair/annum in an American population of Golden Eagles (Beecham and Kochert 1975),
23 0.59 offspring/pair/annum from a Zimbabwean population of the African Hawk Eagles (Hustler

1 and Howells 1988), and 0.36 to 1.24 offspring/pair/annum in a European population of Bonelli's
2 Eagles (Real and Mafiosa 1997). Furthermore, López-López et al. (2007) found a rate of 1.389
3 offspring/pair/annum of Bonelli's Eagles in Eastern Spain. The higher fledging rates in the other
4 species are probably due to the fact that these species breed annually whereas the African Crowned
5 Eagle breeds biennially in the Nelspruit area (G Batchelor and D Steyn, unpublished data).

6
7 There is much debate over whether the African Crowned Eagle is an annual or biennial (raising
8 one chick every 24 months) breeder (see Malan 2005 for a discussion). It is thought that biennial
9 breeding is due to a relatively extended period of high dependency of the young (Shultz and
10 Thomsett 2007), which would fit with observations of pairs that are unsuccessful in one year
11 attempting to breed again the following year (Tarboton and Allan 1984, Thomsett 2011, D. Steyn
12 pers. obs). However, there are reports of annual breeding in marginal or savanna habitats (Malan
13 2005) where annual breeding cycles tend to range between 90 and 120 days. For biennially
14 breeding pairs, estimates of the period between nest building and independence of fledged
15 offspring range from 460 days (Skorupa 1989) to 22 months (*ca.* 660 days) (Brown 1976).

16
17 We did not find any avian prey remains and just a single reptile, which is not surprising given that
18 the African Crowned Eagle is known to be predominantly a predator of mammals (Brown 1976,
19 Tarboton and Allan 1984). It should be noted that inferring diet from bone collection below the
20 nest is not without controversy and Jarvis et al. (1980) and Rosenberg and Cooper (1990) have
21 argued that it can only serve as a guide. Such prey analyses can be biased, as small bones tend to
22 be completely digested (Brown et al. 1982, McGraw et al. 2006), but may give a good
23 approximation of dietary composition (Boshoff et al. 1994).

1

2 The finding that the antelopes were the most common prey in this study corroborates the work of
3 Tarboton and Allan (1984) who reported 43% of prey items consisted of antelope (91% of these
4 being juveniles). Of those antelopes identified to species level, Tarboton and Allan (1984)
5 recognised red duiker (*Cephalophus natalensis*), grey duiker (*Sylvicapra grimmia*) and bushbuck
6 (*Tragelaphus scriptus*), as the three main species in their study; these are the same species
7 identified in our study. Furthermore, the statement by Brown et al. (1982) that monkeys are a minor
8 dietary component outside of forests is supported by our study. However, prey remains at three of
9 our nests consisted primarily of primates; even though these nests were in savanna and not forest.
10 This could suggest a preference by some pairs for primate prey.

11

12 The lack of rock hyraxes (*Procavia capensis*) in the prey analysis is noteworthy, particularly since
13 Jarvis et al. (1980) and Boshoff et al. (1994) showed that populations of African Crowned Eagles
14 in South Africa preyed mainly on hyraxes; however a recent study based on a single nest showed
15 a preponderance of bovids and primates (Symes and Antonites in press). Tarboton and Allan's
16 (1984) study, carried out in the same general area as ours, found hyraxes to comprise a total of
17 29% of the African Crowned Eagle diet, and at one particular nest comprising 67% of prey
18 remains. We suggest that the lack of rock hyrax remains at our studied nests was due to a large
19 population decline of hyrax in our area, which is supported by anecdotal evidence (G. Batchelor
20 and D. Steyn, pers. obs.). Rock hyraxes are prone to such population fluctuations which are mainly
21 driven by disease (Prinsloo and Robinson 1992, Chiweshe 2002).

22

1 Habitat type could be associated with a preferred prey category, for example forest-based eagles
2 could be expected to prey on more primates (Struhsaker and Leakey 1990, Mitani et al. 2001).
3 However, Boshoff et al. (1994) found that wild antelopes were the main prey taxon for African
4 Crowned Eagles inhabiting both forest and savanna habitats in South Africa. The data would
5 indicate that African Crowned Eagles are not a “monkey specialist” and that Brown et al. (1982)
6 were correct in concluding that monkeys were a less important dietary component outside of
7 rainforests. African Crowned Eagles breeding in Southern and East African forests face different
8 habitat constraints to those in tropical rainforests of Central and West Africa; birds breeding in
9 rainforest usually do so in large, continuous tracts of forest and therefore are restricted to that
10 habitat. Forests in Southern and East Africa tend to be smaller patches allowing the birds to move
11 into surrounding savanna habitat. This may affect their diets.

12

13 Predominantly, the high diversity (high SDI) diets were found in the South African savanna biome
14 (Jarvis et al. 1980, Tarboton and Allan 1984, Boshoff et al. 1994), compared to the low diversity
15 of diets in the rainforest biome (Skorupa 1989, Shultz 2002). This is despite the fact that the
16 African Crowned Eagle may feed on the same number of prey families (13) in Ivory Coast (Shultz
17 2002) as in South Africa (Boshoff et al. 1994) i.e. prey species richness may be the same. Hence,
18 diets of these eagles in the forest biomes of Ivory Coast and Uganda are less diverse (as a result of
19 the preponderance of one or two prey types at the expense of the others) than those in South Africa,
20 even though the birds may prey upon a similarly wide range of species. A suggestion for further
21 work from this heuristic analysis would be to obtain dietary data from studies conducted on
22 populations between 5° and 20° S, where there is currently a large gap in our knowledge.

23

1 **Acknowledgements**

2 We thank all members of the Crowned Eagle Working Group of Nelspruit for assistance. André
 3 Botha and the Birds of Prey Working Group helped to set up the project and the following
 4 landowners supported it in numerous ways: Ann Barre, John Burrows, Rudi DuPlessis, Theunis
 5 DuPlessis, Matthew Greeff, Graham Grieve, Keith Harris, Jan Huyser, Stewart Jensen, Steve van
 6 der Linde, Maryna Mathee, Nikki McCartney, John McOnie, Paul Mostert, Johan Rademann,
 7 Phillip van Rooyen, André Slabbert, Rob Vollet, Sylvia Vollet, Bridget Wood and Pat Wood.
 8 Dorothy Hall and Susanne Shultz provided information, comments and data. Elmi Noppe and
 9 colleagues at GIS map in Nelspruit provided assistance with mapping. Teresa Kearney gave us
 10 access to collections at the Ditsong National Museum of Natural History (Pretoria). For funding
 11 assistance we thank Neil McCormick, Martin Taylor, Elsabe Coetzee, Neil Fishwick, Vivienne
 12 Fishwick and the following organisations: Komatiland Forests, BirdLife South Africa, Sappi
 13 Forests, Fishwick Nurseries, Bird Life Lowveld, Barberton Bird Club and GIS Map (Nelspruit).
 14 We thank two anonymous reviewers for useful comments on an earlier draft.

15

16 **References**

- 17 **Allan DG, Harrison JA, Navarro RA, van Wilgen BW, Thompson MW.** 1997. The impact
 18 of commercial afforestation on bird populations in Mpumalanga province, South Africa -
 19 insights from bird-atlas data. *Biological Conservation* 79: 173-185
- 20 **Barnes KN** (ed.). 2000. The Eskom red data book of birds of South Africa, Lesotho and
 21 Swaziland. Johannesburg: BirdLife South Africa
- 22 **Beecham J, Kochert M.** 1975. Breeding biology of the golden eagle in southwestern Idaho.
 23 *Wilson Bulletin* 87: 506-513

- 1 **Boshoff AF, Palmer, NG, Vernon CJ, Avery G.** 1994. Comparison of the diet of crowned
2 eagles in the savanna and forest biomes of south-eastern South Africa. South African Journal
3 of Wildlife Research 24: 26-31
- 4 **Brown LH.** 1966. Observations on some Kenya eagles. Ibis 108: 531-572
- 5 **Brown LH.** 1976. Eagles of the World. Newton Abbott: David and Charles Publishers Ltd
- 6 **Brown L, Gargett V, Steyn P.** 1977. Breeding success in some African eagles related to
7 theories about sibling aggression and its effects. Ostrich 48: 65 -71
- 8 **Brown LH, Urban EK, Newman K.** 1982. The Birds of Africa Vol. 1. London: Academic
9 Press. pp 429–433
- 10 **Byers CR, Steinhorst RK.** 1984. Clarification of a technique for analysis of utilization–
11 availability data. Journal of Wildlife Management 48: 1050-1053
- 12 **Cardillo M, Mace GM, Jones KE, Bielby J, Bininda-Emonds ORP, Sechrest W, Orme**
13 **CDL, Purvis A.** 2005. Multiple causes of high extinction risk in large mammal species.
14 Science 309: 1239-1241
- 15 **Chiweshe N.** 2002. Dassie census in the Matobo hills, Zimbabwe. Afrotherian Conservation:
16 Newsletter of the IUCN/SSC Afrotheria Specialist Group No.1, 6-7
- 17 **Crawley MJ.** 1993. GLIM for ecologists. Oxford: Blackwell Scientific Publications
- 18 **Crawley. MJ.** 2002 Statistical computing: an Introduction to data analysis using S-Plus.
19 Chichester: John Wiley & Sons
- 20 **Daneel ABC.** 1979. Prey size and hunting methods of the crowned eagle. Ostrich 50: 120-121

- 1 **Grafen A, Hails R.** 2002. Modern statistics for the life sciences. Oxford: Oxford University
2 Press
- 3 **Hustler K, Howells WW.** 1988. The effect of primary production on breeding success and
4 habitat selection in the African hawk-eagle. *Condor* 90: 583–587
- 5 **Jarvis MJF, Currie MH, Palmer NG.** 1980. Food of the crowned hawk eagle in the Cape
6 Province. *Ostrich* 51: 215–218
- 7 **Johns M.** 1993. Are all trees green? The spotlight on forestry. *Africa - Environment and*
8 *Wildlife* 1: 77-85
- 9 **Krebs CJ.** 1999. *Ecological Methodology* (2nd Edition) Menlo Park: Benjamin/Cummings
- 10 **López-López P, García-Ripollés C, Urios V.** 2007. Population size, breeding performance
11 and territory quality of Bonelli's Eagle *Hieraaetus fasciatus* in eastern Spain. *Bird Study* 54:
12 335–342
- 13 **Malan G, Robinson ER.** 2001. Nest-Site selection by black sparrowhawks *Accipiter*
14 *melanoleucus*: implications for managing exotic pulpwood and sawlog forests in South Africa.
15 *Environmental Management* 28: 195–205
- 16 **Malan G, Shultz S.** 2002. Nest-site selection of the crowned hawk-eagle in the forests of
17 KwaZulu-Natal, South Africa and Tai, Ivory Coast. *Journal of Raptor Research* 36: 300-308
- 18 **Malan G.** 2005. Reproductive success and nesting periodicity of a pair of African crowned
19 eagles breeding in KwaZulu-Natal. *Ostrich* 76: 215-218
- 20 **Mitani JC, Sanders JC, Lwanga JS, Windfelder TL.** 2001. Predatory behavior of crowned
21 hawk-eagles (*Stephanoaetus coronatus*) in Kibale National Park, Uganda. *Behavioral Ecology*
22 and *Sociobiology* 49: 187–195

- 1 **Monadjem A, Boycott RC, Parker V, Culverwell J.** 2003. Threatened vertebrates of
2 Swaziland. In: Swaziland Red Data Book: fishes, amphibians, reptiles, birds and mammals.
3 Mbabane: Ministry of Tourism, Environment and Communication. pp 115-116
- 4 **Monadjem A, Rasmussen M.** 2008. Nest distribution and conservation status of eagles,
5 selected hawks and owls in Swaziland. *Gabar* 19: 1-22
- 6 **McGraw WS, Cooke C, Shultz S.** 2006. Primate remains from African crowned eagle
7 (*Stephanoaetus coronatus*) nests in Ivory Coast's Taï forest: implications for primate predation
8 and early hominid taphonomy in South Africa. *American Journal of Physiological*
9 *Anthropology* 131: 151–165
- 10 **Mucina L, Rutherford M** (eds). 2006. The vegetation of South Africa, Lesotho and
11 Swaziland. *Strelitzia* 19. Pretoria: South Africa National Biodiversity Institute
- 12 **Nikolaus G.** 2001. Bird exploitation for traditional medicine in Nigeria. *Malimbus* 23: 45-55
- 13 **Noss RF, Quigley HB, Hornocker MG, Merrill T, Paquet PC.** 1996. Conservation biology
14 and carnivore conservation in the Rocky Mountains. *Conservation Biology* 10: 949–963
- 15 **Postupalsky S.** 1973. Raptor reproductive success: some problems with methods, criteria and
16 terminology. In Hamerstrom Jr. FN, Harrell BE. & Olendorff RR (eds). *Management of*
17 *raptors: Raptor Research Report 2.* South Dakota: Vermillion. pp 21–31
- 18 **Prinsloo P, Robinson TJ.** 1992. Geographic mitochondrial DNA variation in the rock hyrax,
19 *Procavia capensis*. *Molecular Biology and Evolution* 9: 447–456
- 20 **Quinn GP, Keough MJ.** 2002. *Experimental design and data analysis for biologists.*
21 Cambridge: Cambridge University Press

- 1 **Real J, Mafiosa S.** 1997. Demography and conservation of western European Bonelli's eagle
2 *Hieraaetus fasciatus* populations. *Biological Conservation* 79: 5-66
- 3 **Rosenberg KV, Cooper RJ.** 1990. Approaches to avian diet analysis. *Studies in Avian*
4 *Biology* 13: 80-90
- 5 **Shultz S.** 2002. Population density, breeding chronology and diet of crowned eagles
6 *Stephanoaetus coronatus* in Tai National Park, Ivory Coast. *Ibis* 144: 135-138
- 7 **Shultz S, Thomsett S.** 2007. Interactions between African crowned eagles and their prey
8 community. *Cambridge Studies in Biological and Evolutionary Anthropology*. In ed McGraw,
9 S., Zuberbuhler, K. & Noe, R 9eds). *Monkeys of the Tai Forest*,. Cambridge University Press.
10 pp 171–193
- 11 **Simmons RE.** 1993. Effects of supplementary food on density-reduced breeding in an African
12 eagle: adaptive restraint or ecological constraint? *Ibis* 135: 394-402
- 13 **Skorupa JP.** 1989. Crowned eagles *Stephanoaetus coronatus* in rainforest: observations on
14 breeding chronology and diet at a nest in Uganda. *Ibis* 131: 294-298
- 15 **Smith DR, Hardy ICW, Gammell MP.** 2011. Power rangers: no improvement in the
16 statistical power of analyses published in *Animal Behaviour*. *Animal Behaviour* 81: 347-352
- 17 **South African Weather Service** 2009
18 www.weather.co.za/climat/climstats/nelspruitstats.jsp. Accessed 26 August 2009
- 19 **Steyn P.** 1982. *Birds of Prey of Southern Africa*. Cape Town: David Phillip
- 20 **Skinner JD, Chimimba C.** 2005. *The Mammals of the Southern African Subregion*.
21 Cambridge: Cambridge University Press.

- 1 **Struhsaker T, Leakey M.** 1990. Prey selectivity by crowned hawk-eagles on monkeys in the
2 Kibale Forest, Uganda. *Behavioural Ecology and Sociobiology* 26: 435–443
- 3 **Symes C, Antonites A.** Notes on African Crowned Eagle *Stephanoaetus coronatus* diet in
4 savanna and forest in KwaZulu-Natal, South Africa. in press. Ostrich
- 5 **Tarboton WR, Allan DG.** 1984. The status and conservation of birds of prey in the Transvaal.
6 Pretoria: Transvaal Museum Monograph 3
- 7 **Thiollay J-M.** 2006. Large bird declines with increasing human pressure in savanna
8 woodlands (Burkina Faso). *Biodiversity and Conservation*. 15: 2085-2108
- 9 **Thomsett S.** 2011. Simon Thomsett on the African Crowned Eagle. Downloaded 13 July
10 2011
11 <http://www.africanraptors.org/simon-thomsett-on-the-african-crowned-eagle-part-1/>
12 <http://www.africanraptors.org/simon-thomsett-on-the-african-crowned-eagle-part-2/>
13 <http://www.africanraptors.org/simon-thomsett-on-the-african-crowned-eagle-part-3/>
- 14 **Whytock RC, Morgan BJ.** 2010a. The avifauna of the Ebo Forest Cameroon. *Malimbus* 32:
15 22-32
- 16 **Whytock RC, Morgan BJ.** 2010b. The commercial trade in bushmeat potentially threatens
17 raptor populations in the Ebo forest Cameroon. *Gabar* 21: 1-7
- 18 **Wilson K, Hardy ICW.** 2002. Statistical analysis of sex ratios: an introduction. In Hardy
19 I.C.W. (ed). *Sex ratios: concepts and research methods*. Cambridge: Cambridge University
20 Press. pp 48-92
- 21 **Zar JH.** 1984. *Biostatistical analyses*. Englewood Cliffs: Prentice Hall
- 22

1
2
3

Table 1. Geographical influences on the probability of nest abandonment. Results are from logistic analysis.

Explanatory variable	d.f.	Deviance Explained, <i>G</i>	P
Nearest neighbour distance	1	4.09	0.043
Land use category	3	0.94	0.419
Altitude	1	0.63	0.429
Land patch area	1	0.05	0.815
Exotic tree	1	1.18	0.278
Vegetation type	7	1.35	0.220
Residual	13		
Total	27		

4
5

1 **Table 2. African Crowned Eagle diet in north-eastern South**
 2 **Africa.** Vertebrate prey species were identified from remains located
 3 beneath 15 nests. Mammal taxonomy follows Skinner and Chimimba
 4 (2005)

Family and species	English name	n	% total
Bovidae			
<i>Cephalophus natalensis</i>	Red duiker	40	25.6
<i>Sylvicapra grimmia</i>	Grey duiker	23	14.7
<i>Tragelaphus scriptus</i>	Bushbuck	11	7.1
<i>Oreotragus oreotragus</i>	Klipspringer	3	1.9
Unidentified		30	19.2
Subtotal		107	68.5
Cercopithecidae			
<i>Chlorocebus aethiops</i>	Vervet monkey	33	21.2
Unidentified		4	2.6
Subtotal		37	23.8
Procaviidae			
<i>Procavia capensis</i>	Rock hyrax	1	0.6
Herpestidae			
<i>Galerella sanguinea</i>	Slender mongoose	1	0.6
<i>Mongos mongo</i>	Banded mongoose	1	0.6
Subtotal		2	1.2
Viverridae			
<i>Genetta</i> sp.	Genet	3	1.9
Felidae			
<i>Felis domesticus</i>	Domestic cat	1	0.6
Thryonomidae			
<i>Thryonomys swinderianus</i>	Cane rat	1	0.6
Hystriidae			
<i>Hystrix africae australis</i>	Porcupine	1	0.6
Varanidae			
<i>Varanus</i> sp.	Monitor lizard	1	0.6
Total		156	

1 **Fig. 1.** Number of African Crowned Eagle nests in each vegetation type within the study area.
2 Vegetation types are: BMG = Barberton Montane Grassland, BSS = Barberton Serpentine
3 Sourveld, KMB = Kaalrug Mountain Bushveld, LSB = Legogote Sour Bushveld, LMG =
4 Lydenberg Montane Grassland, GL = Granite Lowveld, MMB = Malelane Mountain Bushveld,
5 PSB = Pretoriuskop Sour Bushveld, NEDG = Northern Escarpment Dolomite Grassland, NEQS =
6 Northern Escarpment Quartzite Grassland, NMF = Northern Mistbelt Forest, SF = Scarp Forest.
7 These vegetation types three biomes: NEDG and NEQS are ‘Grassland’, NMF and SF are
8 ‘Afrotemperate, Subtropical and Azonal Forests’ and the remainder are ‘Savanna’. Vegetation
9 types and biomes are according to Mucina and Rutherford (2006).

10

11 **Fig. 2.** The number of African Crowned Eagle nests in each land use type within the study area.
12 There were no nests in any of the following seven land use types: ‘barren rock’, ‘degraded’,
13 ‘mines’, ‘pasture’, ‘grassland’, ‘urban’ and ‘wetland’.

14

15 **Fig. 3.** The percentages of prey families in the diet of African Crowned Eagles in nine different
16 populations studied across Africa. Studies are arranged in order of decreasing latitude. SDI =
17 Species diversity index. Data sources: ¹Shultz (2002), ²Struhsaker and Leakey (1990), ³Skorupa
18 (1989), ⁴Brown (1966), ⁵Tarboton and Allan (1984), ⁶This study, ⁷Boshoff *et al.* (1994) [forest],
19 ⁸Boshoff *et al.* (1994) [savanna], ⁹Jarvis *et al.* (1980).

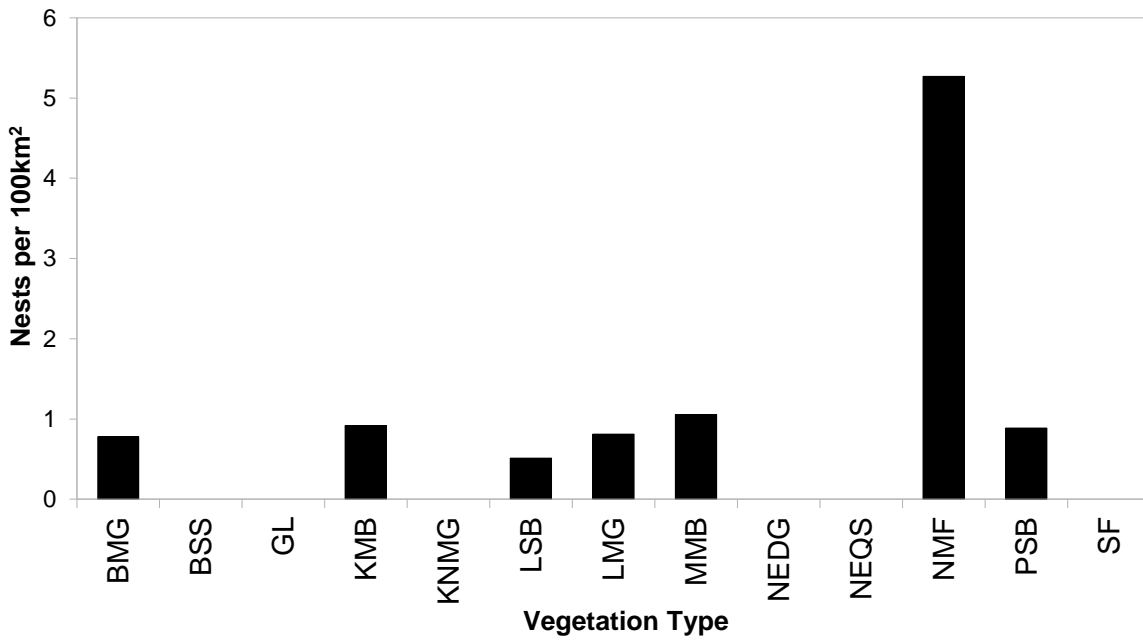
20

1 **Fig. 4.** Dendrogram deriving from hierarchical cluster analysis to show similarities in African
2 Crowned Eagle diet composition across populations and the primary habitat in which the study
3 was carried out.

4

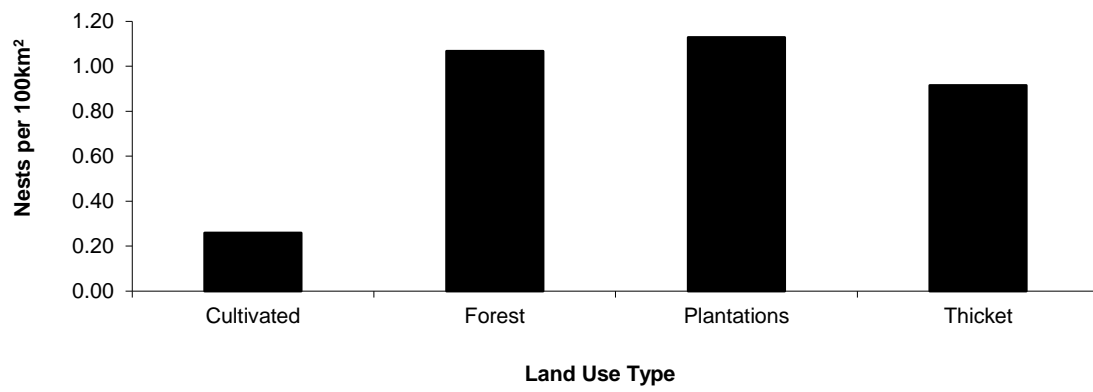
5 Fig. 1

6



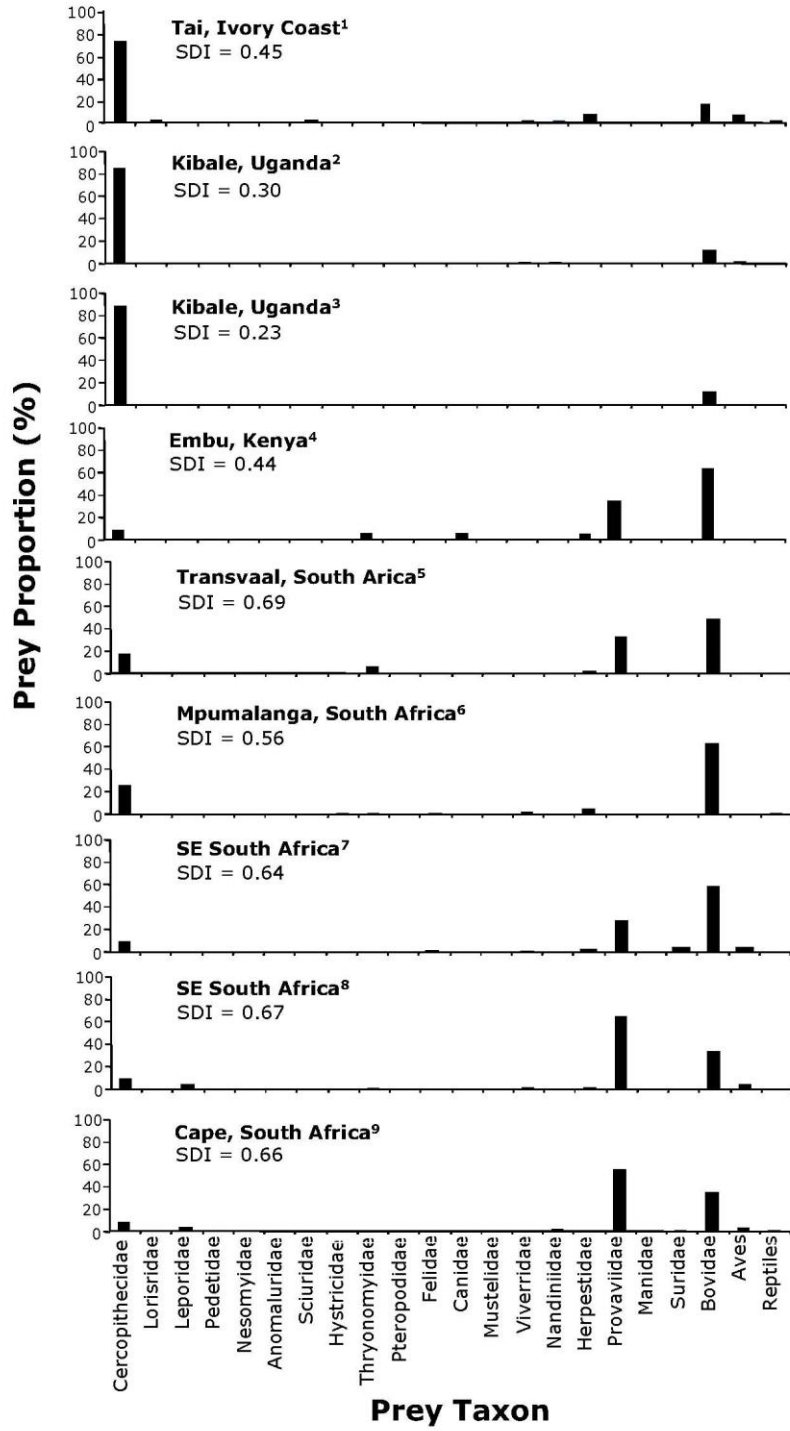
7
8
9

1 Fig. 2
2



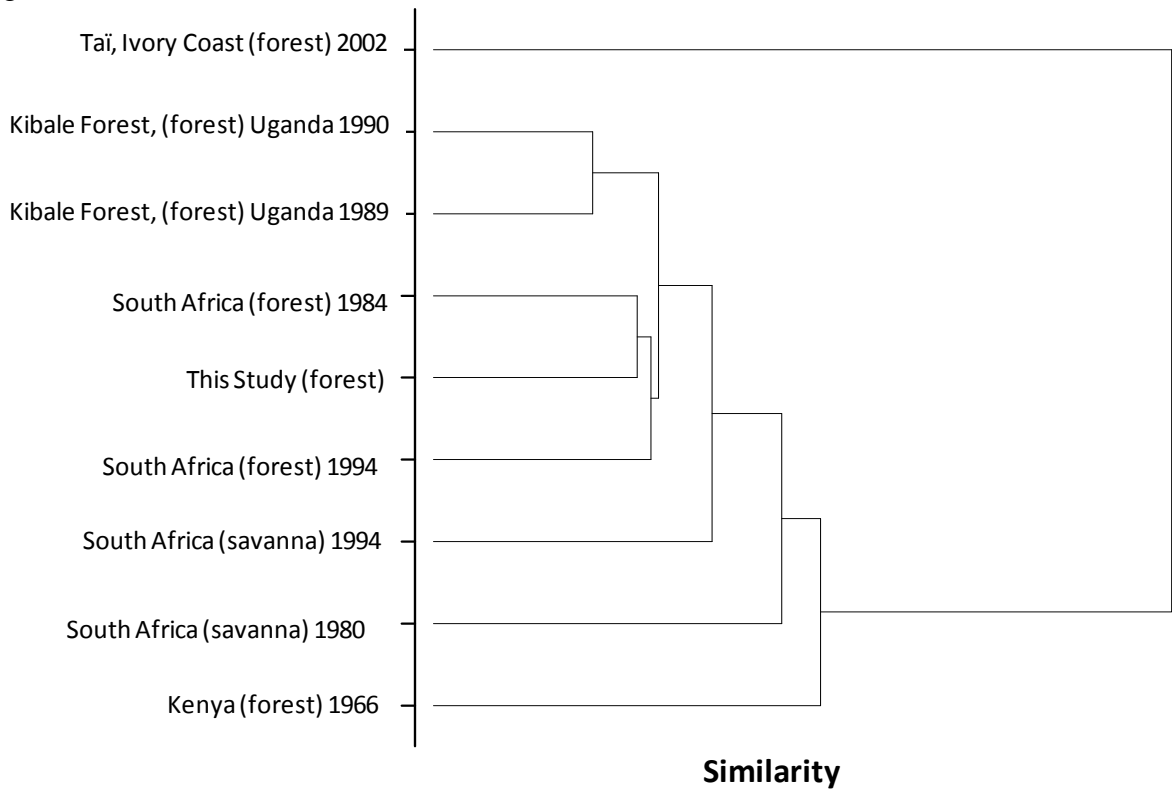
3
4
5

1 Fig. 3
2



3
4

1 Fig. 4



2