

# Employment of disabled people in Europe in 2002

*Didier Dupré - Antti Karjalainen*

The year 2003 is the European Year of People with Disabilities. The preliminary results of the ad hoc module on employment of disabled people of the Spring 2002 round of the Labour Force Survey provide the following estimates for persons aged 16-64 living in private households in 25 European countries:

- Of those persons aged between 16 and 64 years, 44.6 million – i.e. one in six (15.7%) – stated that they had a long-standing health problem or disability (LSHPD).
- Labour force participation is indeed much lower for the disabled: 78% of the severely disabled aged 16-64 are outside of the labour force as compared to 27% for those without LSHPD. And even among those in the labour force, the unemployment rate is nearly twice as high among the severely disabled as compared to the non-disabled. Only 16% of those who face work restrictions are provided with some assistance to work.
- Overall there is little difference in the prevalence of disability among males and females, while the prevalence rates of LSHPD strongly increase with age. They are higher among those with lower education, among the widowed, divorced and the inactive.
- The percentage of the working-age population with LSHPD varies widely among countries, with the highest percentage (32.2%) found in Finland and the lowest in Romania (5.8%). This wide-ranging spectrum might also reflect differences in how respondents perceived the question. Although utmost attention was paid to translation of the questions, the replies could have been mediated by cultural traits.

## Statistics in focus

### POPULATION AND SOCIAL CONDITIONS

THEME 3 – 26/2003

### POPULATION AND LIVING CONDITIONS

## Contents

Characteristics of disabled people..... 4

Assistance to work ..... 5

Restriction levels ..... 6

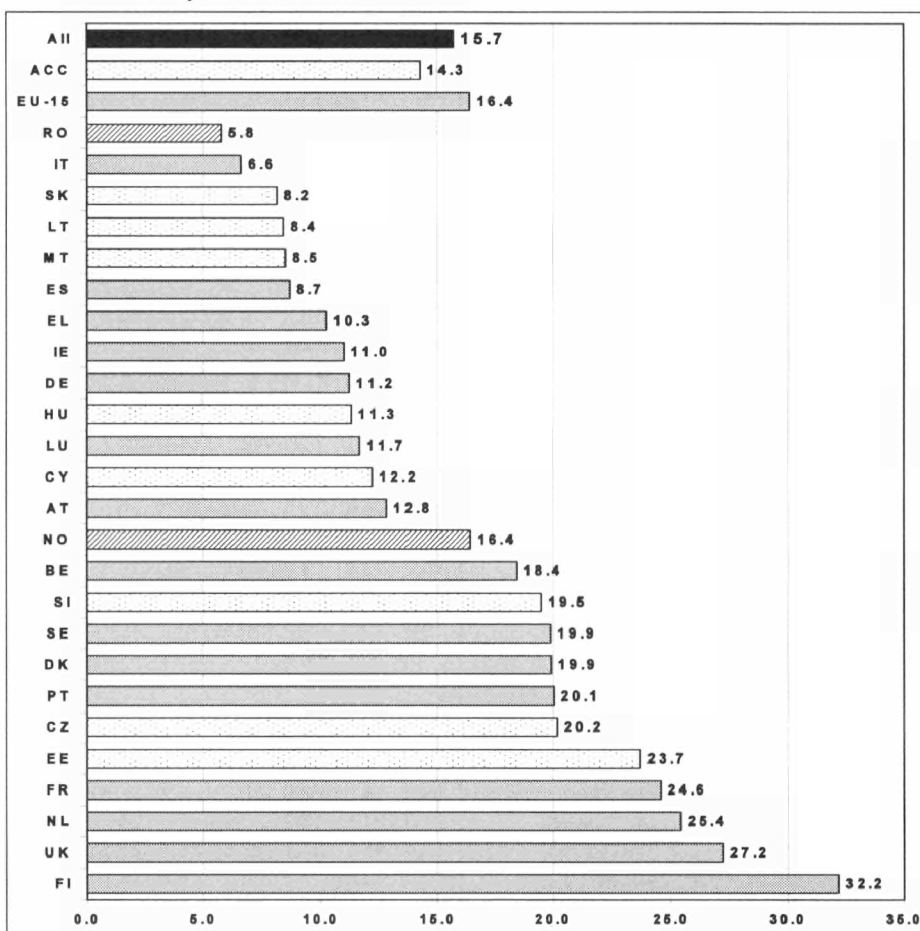


Figure 1: Percentage of population aged 16-64 stating that they have a long-standing health problem or disability (LSHPD)



**Table 1: Prevalence of long-standing health problem or disability (LSHPD), EU Member States**

|                                     | B           | DK          | D           | EL          | E          | F           | IRL         | I          | L           | NL          | A           | P           | FIN         | S           | UK          |      |
|-------------------------------------|-------------|-------------|-------------|-------------|------------|-------------|-------------|------------|-------------|-------------|-------------|-------------|-------------|-------------|-------------|------|
| <b>Total</b>                        | <b>18.4</b> | <b>19.9</b> | <b>11.2</b> | <b>10.3</b> | <b>8.7</b> | <b>24.6</b> | <b>11.0</b> | <b>6.6</b> | <b>11.7</b> | <b>25.4</b> | <b>12.8</b> | <b>20.1</b> | <b>32.2</b> | <b>19.9</b> | <b>27.2</b> |      |
| Females                             | 17.9        | 21.1        | 10.3        | 10.6        | 8.0        | 24.8        | 10.5        | 6.3        | 9.6         | 26.4        | 11.6        | 21.6        | 33.6        | 21.7        | 27.8        |      |
| Males                               | 18.9        | 18.8        | 12.2        | 9.9         | 9.4        | 24.3        | 11.6        | 7.0        | 13.7        | 24.5        | 14.0        | 18.5        | 30.7        | 18.2        | 26.7        |      |
| <b>By marital status and gender</b> |             |             |             |             |            |             |             |            |             |             |             |             |             |             |             |      |
| Females                             | Single      | 12.6        | 15.2        | 6.8         | 5.4        | 5.6         | 19.9        | 7.6        | 4.4         | 6.1         | 21.4        | 7.3         | 12.7        | 23.9        | 16.5        | 20.7 |
|                                     | Married     | 18.8        | 22.3        | 10.2        | 11.5       | 8.5         | 25.1        | 11.2       | 6.5         | 9.2         | 25.8        | 12.0        | 23.8        | 37.0        | 24.3        | 28.7 |
|                                     | Widowed     | 30.1        | 36.4        | 22.0        | 25.9       | 19.2        | 45.4        | 24.0       | 14.7        | 29.3        | 47.1        | 26.8        | 46.8        | 60.5        | 28.3        | 48.4 |
|                                     | Divorced    | 31.8        | 32.6        | 17.2        | 15.6       | 11.9        | 38.6        | 20.8       | 10.3        | 15.8        | 43.9        | 17.4        | 23.4        | 43.8        | 32.4        | 37.1 |
| Males                               | Single      | 15.2        | 15.6        | 8.4         | 5.5        | 7.9         | 18.7        | 9.8        | 5.3         | 7.5         | 17.9        | 9.9         | 14.1        | 22.9        | 14.9        | 21.1 |
|                                     | Married     | 20.1        | 19.4        | 13.7        | 12.3       | 10.1        | 27.7        | 12.4       | 7.9         | 16.0        | 27.8        | 16.2        | 20.3        | 35.3        | 21.1        | 29.0 |
|                                     | Widowed     | 35.5        | 38.5        | 24.9        | 24.5       | 18.6        | 43.2        | 22.1       | 16.5        | 26.4        | 40.5        | 22.5        | 36.1        | 53.8        | 34.5        | 44.7 |
|                                     | Divorced    | 33.9        | 31.4        | 19.2        | 15.8       | 16.4        | 32.9        | 23.7       | 9.2         | 21.0        | 37.2        | 18.9        | 33.2        | 42.3        | 24.1        | 35.3 |
| Total                               | Single      | 14.1        | 15.4        | 7.7         | 5.5        | 6.9         | 19.3        | 8.8        | 4.9         | 6.9         | 19.4        | 8.8         | 13.5        | 23.4        | 15.6        | 20.9 |
|                                     | Married     | 19.4        | 20.8        | 11.9        | 11.9       | 9.3         | 26.4        | 11.8       | 7.2         | 12.6        | 26.8        | 14.0        | 22.1        | 36.2        | 22.7        | 28.9 |
|                                     | Widowed     | 31.5        | 37.0        | 22.6        | 25.7       | 19.1        | 44.9        | 23.5       | 15.0        | 28.7        | 45.4        | 25.9        | 44.9        | 59.1        | 30.0        | 47.5 |
|                                     | Divorced    | 32.6        | 32.1        | 18.1        | 15.7       | 13.5        | 36.2        | 21.9       | 9.8         | 18.3        | 41.0        | 18.0        | 26.1        | 43.2        | 28.7        | 36.3 |
| <b>By age and gender</b>            |             |             |             |             |            |             |             |            |             |             |             |             |             |             |             |      |
| Females                             | 16-24       | 5.4         | 10.8        | 3.2         | 2.5        | 2.4         | 12.7        | 4.6        | 1.9         | 2.5         | 15.6        | 4.3         | 7.5         | 17.3        | 11.3        | 16.0 |
|                                     | 25-29       | 9.4         | 15.8        | 4.2         | 2.9        | 3.9         | 16.3        | 5.4        | 2.3         | 6.6         | 18.5        | 6.2         | 9.4         | 20.6        | 15.8        | 18.1 |
|                                     | 30-34       | 11.8        | 11.5        | 5.2         | 4.2        | 4.4         | 18.3        | 7.9        | 3.1         | 4.2         | 20.0        | 6.7         | 12.0        | 22.8        | 18.9        | 19.2 |
|                                     | 35-39       | 17.4        | 17.9        | 6.8         | 5.8        | 5.8         | 21.7        | 8.9        | 3.9         | 5.6         | 20.9        | 7.1         | 15.9        | 27.8        | 21.9        | 21.0 |
|                                     | 40-44       | 18.2        | 23.0        | 8.2         | 8.1        | 6.9         | 24.5        | 9.5        | 5.1         | 9.4         | 28.2        | 9.8         | 20.4        | 30.9        | 25.1        | 25.6 |
|                                     | 45-49       | 23.1        | 25.1        | 10.9        | 10.4       | 8.6         | 28.4        | 13.1       | 6.8         | 12.8        | 28.7        | 13.6        | 24.8        | 34.5        | 24.9        | 29.7 |
|                                     | 50-54       | 27.5        | 27.5        | 15.4        | 15.5       | 12.9        | 36.1        | 15.9       | 9.8         | 15.2        | 36.1        | 18.0        | 33.6        | 44.5        | 28.8        | 39.2 |
|                                     | 55-59       | 31.6        | 31.7        | 20.9        | 22.1       | 17.2        | 39.9        | 22.0       | 12.8        | 18.3        | 42.5        | 24.7        | 44.9        | 52.5        | 31.2        | 46.4 |
|                                     | 60-64       | 30.2        | 36.6        | 21.0        | 31.2       | 22.9        | 43.8        | 26.2       | 16.1        | 25.0        | 40.3        | 24.1        | 50.3        | 66.2        | 30.6        | 51.8 |
| Males                               | 16-24       | 7.0         | 12.3        | 3.8         | 2.7        | 3.4         | 11.1        | 5.3        | 2.4         | 4.1         | 11.8        | 6.2         | 8.5         | 14.3        | 9.7         | 15.6 |
|                                     | 25-29       | 10.9        | 10.1        | 5.0         | 3.2        | 4.3         | 16.3        | 7.0        | 3.3         | 5.2         | 15.4        | 7.3         | 10.8        | 18.6        | 11.6        | 16.7 |
|                                     | 30-34       | 15.0        | 11.9        | 6.3         | 4.1        | 5.8         | 19.1        | 7.6        | 3.3         | 9.1         | 14.9        | 10.0        | 12.0        | 21.7        | 14.5        | 19.0 |
|                                     | 35-39       | 16.1        | 12.8        | 7.9         | 5.7        | 6.6         | 19.9        | 8.4        | 5.1         | 8.3         | 21.8        | 9.9         | 14.3        | 21.8        | 18.8        | 20.8 |
|                                     | 40-44       | 20.2        | 17.3        | 9.9         | 7.5        | 8.4         | 26.8        | 10.7       | 5.8         | 12.1        | 26.0        | 11.3        | 16.5        | 25.9        | 19.7        | 24.1 |
|                                     | 45-49       | 23.0        | 22.8        | 12.5        | 9.3        | 10.6        | 27.9        | 13.6       | 7.5         | 15.6        | 27.4        | 15.3        | 19.6        | 33.0        | 19.6        | 28.8 |
|                                     | 50-54       | 26.1        | 24.6        | 17.0        | 14.6       | 15.0        | 34.8        | 17.6       | 11.0        | 24.1        | 34.3        | 23.3        | 27.0        | 41.1        | 23.5        | 36.0 |
|                                     | 55-59       | 32.7        | 30.2        | 24.8        | 20.3       | 20.4        | 42.3        | 23.8       | 13.7        | 31.6        | 40.7        | 28.4        | 37.5        | 52.2        | 28.6        | 45.6 |
|                                     | 60-64       | 34.1        | 33.2        | 27.7        | 29.0       | 27.1        | 40.7        | 32.7       | 17.0        | 30.9        | 45.1        | 26.5        | 43.7        | 65.7        | 29.1        | 54.4 |
| Total                               | 16-24       | 6.2         | 11.6        | 3.5         | 2.6        | 2.9         | 11.9        | 5.0        | 2.1         | 3.3         | 13.7        | 5.2         | 8.0         | 15.8        | 10.4        | 15.8 |
|                                     | 25-29       | 10.2        | 13.0        | 4.6         | 3.1        | 4.1         | 16.3        | 6.2        | 2.8         | 5.9         | 17.0        | 6.8         | 10.1        | 19.6        | 13.7        | 17.4 |
|                                     | 30-34       | 13.4        | 11.7        | 5.8         | 4.1        | 5.1         | 18.7        | 7.7        | 3.2         | 6.7         | 17.4        | 8.3         | 12.0        | 22.2        | 16.7        | 19.1 |
|                                     | 35-39       | 16.7        | 15.2        | 7.3         | 5.8        | 6.2         | 20.8        | 8.7        | 4.5         | 7.0         | 21.3        | 8.5         | 15.1        | 24.7        | 20.3        | 20.9 |
|                                     | 40-44       | 19.2        | 20.3        | 9.1         | 7.8        | 7.7         | 25.7        | 10.1       | 5.4         | 10.8        | 27.1        | 10.5        | 18.5        | 28.4        | 22.3        | 24.9 |
|                                     | 45-49       | 23.0        | 23.9        | 11.7        | 9.9        | 9.6         | 28.2        | 13.4       | 7.1         | 14.2        | 28.0        | 14.5        | 22.2        | 33.7        | 22.2        | 29.3 |
|                                     | 50-54       | 26.8        | 26.0        | 16.2        | 15.0       | 13.9        | 35.5        | 16.8       | 10.4        | 19.8        | 35.2        | 20.7        | 30.4        | 42.8        | 26.1        | 37.6 |
|                                     | 55-59       | 32.1        | 31.0        | 22.9        | 21.2       | 18.8        | 41.1        | 22.9       | 13.2        | 25.3        | 41.6        | 26.5        | 41.4        | 52.3        | 29.9        | 46.0 |
|                                     | 60-64       | 32.1        | 34.8        | 24.3        | 30.1       | 24.9        | 42.3        | 29.4       | 16.5        | 27.9        | 42.7        | 25.3        | 47.2        | 65.9        | 29.8        | 53.1 |
| <b>By education and gender</b>      |             |             |             |             |            |             |             |            |             |             |             |             |             |             |             |      |
| Females                             | ISCED 0-2   | 26.4        | 29.8        | 12.1        | 16.4       | 11.3        | 31.5        | 16.3       | 8.7         | 13.5        | 32.5        | 14.3        | 25.7        | 41.4        | 22.4        | 39.8 |
|                                     | ISCED 3     | 14.3        | 19.0        | 10.6        | 5.9        | 4.1         | 22.3        | 7.2        | 3.4         | 7.6         | 22.8        | 11.2        | 9.3         | 33.0        | 24.1        | 23.4 |
|                                     | ISCED 4-6   | 10.1        | 15.3        | 8.0         | 5.1        | 3.1         | 17.6        | 7.1        | 2.7         | 4.2         | 22.1        | 8.7         | 9.0         | 28.0        | 18.2        | 20.3 |
| Males                               | ISCED 0-2   | 27.2        | 23.8        | 12.5        | 14.4       | 13.2        | 30.2        | 17.7       | 9.3         | 19.3        | 31.4        | 17.2        | 20.9        | 37.0        | 19.9        | 42.1 |
|                                     | ISCED 3     | 15.2        | 17.8        | 14.0        | 6.4        | 4.9         | 23.1        | 6.9        | 4.2         | 12.3        | 23.2        | 13.8        | 8.4         | 29.0        | 20.1        | 25.2 |
|                                     | ISCED 4-6   | 10.8        | 15.2        | 9.4         | 5.7        | 3.6         | 16.5        | 7.4        | 3.5         | 7.6         | 18.2        | 11.9        | 9.0         | 26.3        | 13.7        | 19.4 |
| All                                 | ISCED 0-2   | 26.8        | 26.9        | 12.2        | 15.4       | 12.3        | 30.9        | 17.0       | 9.0         | 16.2        | 32.0        | 15.4        | 23.3        | 39.0        | 21.4        | 40.9 |
|                                     | ISCED 3     | 14.8        | 18.4        | 12.3        | 6.2        | 4.5         | 22.7        | 7.1        | 3.8         | 10.0        | 23.0        | 12.6        | 8.9         | 30.9        | 21.7        | 24.4 |
|                                     | ISCED 4-6   | 10.4        | 15.3        | 8.8         | 5.4        | 3.4         | 17.1        | 7.3        | 3.1         | 6.3         | 20.0        | 10.4        | 9.0         | 27.2        | 16.1        | 19.9 |
| <b>By activity and gender</b>       |             |             |             |             |            |             |             |            |             |             |             |             |             |             |             |      |
| Females                             | Employed    | 11.5        | 13.7        | 6.9         | 7.0        | 3.9         | 21.1        | 6.2        | 4.0         | 6.9         | 19.2        | 8.3         | 17.0        | 29.2        | 21.8        | 20.6 |
|                                     | Unemployed  | 23.3        | 18.1        | 14.0        | 5.6        | 4.9         | 27.5        | 9.2        | 3.8         | 7.8         | 34.2        | 15.9        | 22.1        | 28.2        | 21.7        | 26.9 |
|                                     | Inactive    | 25.3        | 44.6        | 15.4        | 14.6       | 12.5        | 30.3        | 16.4       | 8.5         | 12.8        | 40.1        | 17.0        | 29.9        | 48.4        | 21.5        | 43.6 |
| Males                               | Employed    | 13.8        | 13.6        | 7.6         | 6.2        | 4.3         | 21.5        | 7.0        | 4.6         | 10.0        | 20.2        | 10.3        | 14.8        | 25.1        | 17.5        | 20.2 |
|                                     | Unemployed  | 21.6        | 21.5        | 17.2        | 8.0        | 7.6         | 25.8        | 10.7       | 6.2         | 11.2        | 30.6        | 17.9        | 20.3        | 24.2        | 19.9        | 28.7 |
|                                     | Inactive    | 32.4        | 45.7        | 27.1        | 22.5       | 28.7        | 33.1        | 30.1       | 13.9        | 27.7        | 48.6        | 28.0        | 33.3        | 55.5        | 20.4        | 58.1 |
| All                                 | Employed    | 12.8        | 13.6        | 7.3         | 6.5        | 4.2         | 21.3        | 6.7        | 4.4         | 8.7         | 19.8        | 9.4         | 15.8        | 27.1        | 19.5        | 20.4 |
|                                     | Unemployed  | 22.4        | 19.9        | 15.8        | 6.5        | 6.0         | 26.6        | 10.1       | 4.9         | 9.3         | 32.4        | 17.1        | 21.2        | 26.0        | 20.7        | 28.0 |
|                                     | Inactive    | 28.0        | 45.0        | 19.7        | 17.0       | 17.4        | 31.3        | 20.7       | 10.2        | 17.7        | 42.8        | 20.9        | 31.1        | 51.6        | 21.0        | 48.7 |

**Table 1: Prevalence of long-standing health problem or disability (LSHPD), acceding, candidate and EFTA countries and geographical aggregates**

| CZ          | EE          | CY          | LT         | HU          | MT         | SI          | SK         | NO          | RO         | EUR12       | EU15        | ACC         | All         |                                     |
|-------------|-------------|-------------|------------|-------------|------------|-------------|------------|-------------|------------|-------------|-------------|-------------|-------------|-------------------------------------|
| <b>20.2</b> | <b>23.7</b> | <b>12.2</b> | <b>8.4</b> | <b>11.3</b> | <b>8.5</b> | <b>19.5</b> | <b>8.2</b> | <b>16.4</b> | <b>5.8</b> | <b>14.1</b> | <b>16.4</b> | <b>14.3</b> | <b>15.7</b> | <b>Total</b>                        |
| 21.1        | 24.2        | 11.1        | 8.5        | 11.3        | 7.3        | 19.1        | 8.2        | 17.4        | 6.5        | 13.9        | 16.3        | 14.5        | 15.6        | <b>Females</b>                      |
| 19.2        | 23.1        | 13.4        | 8.3        | 11.3        | 9.7        | 19.9        | 8.1        | 15.5        | 5.0        | 14.4        | 16.5        | 14.0        | 15.7        | <b>Males</b>                        |
|             |             |             |            |             |            |             |            |             |            |             |             |             |             | <b>By marital status and gender</b> |
| 11.4        | 15.8        | 4.9         | 6.8        | 3.5         | 7.2        | 9.8         | 4.5        | 11.6        | 3.5        | 10.5        | 12.4        | 7.4         | 11.7        | Single<br>Females                   |
| 22.0        | 26.5        | 11.6        | 7.3        | 12.6        | 7.1        | 23.7        | 8.8        | 18.2        | 6.1        | 13.8        | 16.2        | 15.4        | 15.6        | Married                             |
| 42.6        | 46.7        | 36.7        | 18.8       | 24.4        | 19.0       | 37.3        | 10.3       | 32.7        | 15.5       | 26.9        | 29.7        | 28.5        | 28.0        | Widowed                             |
| 27.5        | 28.2        | 20.7        | 12.0       | 15.7        | 4.3        | 29.6        | 19.8       | 27.5        | 12.3       | 24.4        | 28.3        | 20.7        | 27.0        | Divorced                            |
| 13.7        | 16.3        | 9.1         | 7.2        | 6.0         | 6.5        | 13.5        | 5.7        | 12.5        | 2.7        | 10.9        | 12.7        | 9.4         | 12.0        | Single<br>Males                     |
| 20.7        | 26.6        | 14.9        | 7.5        | 13.1        | 11.2       | 24.9        | 9.2        | 15.4        | 5.8        | 15.9        | 18.0        | 15.6        | 17.1        | Married                             |
| 36.8        | 46.0        | 24.4        | 24.3       | 30.0        | 17.6       | 44.4        | 12.5       | 30.1        | 16.1       | 27.8        | 30.7        | 26.0        | 28.7        | Widowed                             |
| 31.1        | 31.3        | 21.9        | 18.4       | 20.4        | 16.6       | 30.6        | 22.3       | 27.8        | 7.4        | 24.0        | 27.3        | 25.1        | 26.6        | Divorced                            |
| 12.7        | 16.1        | 7.1         | 7.0        | 4.9         | 6.8        | 11.8        | 5.2        | 12.1        | 3.0        | 10.8        | 12.5        | 8.5         | 11.9        | Single<br>Total                     |
| 21.3        | 26.6        | 13.2        | 7.4        | 12.8        | 9.1        | 24.3        | 9.0        | 16.8        | 6.0        | 14.8        | 17.1        | 15.5        | 16.3        | Married                             |
| 41.6        | 46.5        | 34.5        | 19.6       | 25.4        | 18.5       | 38.6        | 11.2       | 32.3        | 15.6       | 27.1        | 29.9        | 27.9        | 28.2        | Widowed                             |
| 28.9        | 29.3        | 21.0        | 14.2       | 17.5        | 10.1       | 30.0        | 20.2       | 27.6        | 10.7       | 24.3        | 27.9        | 22.3        | 26.8        | Divorced                            |
|             |             |             |            |             |            |             |            |             |            |             |             |             |             | <b>By age and gender</b>            |
| 7.2         | 9.1         | 2.1         | 1.9        | 1.2         | 1.7        | 4.4         | 1.4        | 8.1         | 1.5        | 8.4         | 7.6         | 3.6         | 6.9         | 16-24<br>Females                    |
| 9.3         | 11.1        | 2.4         | 2.6        | 2.0         | 4.5        | 4.7         | 2.5        | 10.3        | 2.1        | 10.3        | 9.2         | 5.1         | 8.5         | 25-29                               |
| 11.4        | 15.8        | 3.9         | 2.1        | 3.4         | 5.4        | 9.5         | 4.5        | 9.3         | 1.8        | 8.6         | 10.5        | 6.7         | 9.6         | 30-34                               |
| 12.9        | 21.2        | 7.4         | 6.5        | 3.9         | 4.1        | 11.6        | 5.5        | 10.3        | 3.4        | 10.5        | 12.4        | 8.6         | 11.8        | 35-39                               |
| 19.2        | 13.5        | 11.9        | 6.2        | 10.0        | 6.8        | 20.7        | 8.9        | 15.4        | 7.0        | 12.8        | 15.1        | 12.7        | 14.5        | 40-44                               |
| 25.3        | 26.0        | 13.1        | 11.6       | 17.4        | 7.5        | 24.6        | 11.2       | 19.2        | 9.4        | 15.8        | 18.1        | 18.9        | 17.7        | 45-49                               |
| 35.1        | 37.6        | 16.0        | 14.4       | 26.3        | 9.1        | 37.0        | 19.9       | 25.4        | 14.0       | 21.1        | 24.1        | 27.9        | 24.0        | 50-54                               |
| 40.0        | 46.7        | 28.4        | 24.6       | 28.6        | 14.5       | 39.6        | 18.5       | 33.8        | 14.2       | 25.4        | 29.1        | 31.9        | 28.7        | 55-59                               |
| 47.7        | 52.9        | 35.1        | 17.7       | 17.9        | 22.8       | 42.0        | 16.4       | 40.8        | 15.6       | 26.4        | 30.2        | 30.2        | 29.5        | 60-64                               |
| 9.4         | 9.8         | 4.4         | 2.2        | 1.5         | 3.7        | 7.0         | 2.1        | 9.5         | 1.2        | 5.9         | 7.6         | 4.8         | 6.9         | 16-24<br>Males                      |
| 10.1        | 11.9        | 6.4         | 6.9        | 2.6         | 4.3        | 8.7         | 2.5        | 9.9         | 2.8        | 7.8         | 9.3         | 6.2         | 8.6         | 25-29                               |
| 10.0        | 15.5        | 5.3         | 4.4        | 3.7         | 4.8        | 10.5        | 3.6        | 10.3        | 1.6        | 9.1         | 10.8        | 6.6         | 9.9         | 30-34                               |
| 12.6        | 17.8        | 7.3         | 5.0        | 5.7         | 6.7        | 12.6        | 7.6        | 11.8        | 2.9        | 10.7        | 12.5        | 9.1         | 11.9        | 35-39                               |
| 15.7        | 23.8        | 13.5        | 7.2        | 10.3        | 7.5        | 16.6        | 7.3        | 13.3        | 5.2        | 13.7        | 15.5        | 11.9        | 14.7        | 40-44                               |
| 20.4        | 25.1        | 18.9        | 10.1       | 15.3        | 10.6       | 27.7        | 11.0       | 16.5        | 6.6        | 16.2        | 18.2        | 17.1        | 17.5        | 45-49                               |
| 30.3        | 35.8        | 19.0        | 11.5       | 24.5        | 16.2       | 35.5        | 15.8       | 18.7        | 9.4        | 21.5        | 23.8        | 25.1        | 23.2        | 50-54                               |
| 39.2        | 44.3        | 28.6        | 24.2       | 31.4        | 26.6       | 42.4        | 24.8       | 25.7        | 13.1       | 27.3        | 30.4        | 33.7        | 29.9        | 55-59                               |
| 44.5        | 52.3        | 33.6        | 20.1       | 24.5        | 17.3       | 40.8        | 18.3       | 39.3        | 13.1       | 29.3        | 32.9        | 32.2        | 32.0        | 60-64                               |
| 8.3         | 9.4         | 3.2         | 2.1        | 1.3         | 2.7        | 5.8         | 1.7        | 8.8         | 1.3        | 5.9         | 7.6         | 4.2         | 6.9         | 16-24<br>Total                      |
| 9.7         | 11.5        | 4.3         | 4.8        | 2.3         | 4.4        | 6.7         | 2.5        | 10.1        | 2.5        | 7.6         | 9.3         | 5.6         | 8.5         | 25-29                               |
| 10.7        | 15.6        | 4.6         | 3.2        | 3.5         | 5.1        | 10.0        | 4.0        | 9.8         | 1.7        | 8.9         | 10.7        | 6.7         | 9.8         | 30-34                               |
| 12.8        | 19.6        | 7.3         | 5.8        | 4.8         | 5.3        | 12.1        | 6.5        | 11.0        | 3.2        | 10.6        | 12.5        | 8.8         | 11.9        | 35-39                               |
| 17.4        | 18.4        | 12.7        | 6.7        | 10.1        | 7.1        | 18.7        | 8.1        | 14.3        | 6.2        | 13.3        | 15.3        | 12.3        | 14.6        | 40-44                               |
| 22.8        | 25.6        | 16.0        | 10.9       | 16.4        | 9.1        | 26.3        | 11.1       | 17.9        | 8.0        | 16.0        | 18.2        | 18.0        | 17.6        | 45-49                               |
| 32.8        | 36.8        | 17.5        | 13.0       | 25.5        | 12.6       | 36.2        | 17.9       | 22.1        | 11.7       | 21.3        | 24.0        | 26.5        | 23.6        | 50-54                               |
| 39.6        | 45.7        | 28.5        | 24.4       | 29.9        | 20.3       | 41.0        | 21.4       | 29.9        | 13.7       | 26.3        | 29.8        | 32.8        | 29.3        | 55-59                               |
| 46.2        | 52.7        | 34.4        | 18.7       | 20.7        | 20.2       | 41.5        | 17.2       | 40.1        | 14.4       | 27.8        | 31.5        | 31.1        | 30.7        | 60-64                               |
|             |             |             |            |             |            |             |            |             |            |             |             |             |             | <b>By education and gender</b>      |
| 31.3        | 30.6        | 20.6        | 13.6       | 19.2        | 8.3        | 29.3        | 14.8       | 29.3        | 8.5        | 17.3        | 19.1        | 21.8        | 18.7        | ISCED 0-2<br>Females                |
| 19.0        | 22.6        | 6.7         | 7.1        | 8.4         | 2.1        | 16.7        | 6.8        | 18.0        | 5.4        | 12.1        | 14.7        | 13.0        | 13.9        | ISCED 3                             |
| 14.2        | 23.2        | 4.5         | 7.2        | 4.6         | 4.1        | 9.8         | 2.7        | 10.5        | 5.2        | 10.2        | 12.3        | 8.6         | 11.8        | ISCED 4-6                           |
| 24.0        | 25.6        | 21.9        | 13.2       | 18.9        | 11.3       | 27.6        | 12.9       | 27.4        | 6.5        | 17.2        | 19.0        | 19.2        | 18.4        | ISCED 0-2<br>Males                  |
| 19.1        | 22.1        | 10.7        | 6.8        | 9.1         | 2.8        | 18.4        | 7.6        | 15.9        | 4.4        | 14.0        | 16.5        | 13.4        | 15.3        | ISCED 3                             |
| 14.4        | 23.1        | 7.2         | 6.8        | 6.5         | 5.0        | 13.4        | 3.5        | 8.7         | 4.5        | 10.2        | 12.0        | 9.5         | 11.5        | ISCED 4-6                           |
| 28.5        | 27.9        | 21.2        | 13.4       | 19.1        | 9.8        | 28.5        | 14.0       | 28.4        | 7.7        | 17.3        | 19.0        | 20.7        | 18.6        | ISCED 0-2<br>Total                  |
| 19.1        | 22.4        | 8.7         | 6.9        | 8.8         | 2.4        | 17.6        | 7.2        | 16.9        | 4.9        | 13.1        | 15.6        | 13.2        | 14.6        | ISCED 3                             |
| 14.3        | 23.1        | 5.8         | 7.0        | 5.5         | 4.6        | 11.4        | 3.1        | 9.6         | 4.9        | 10.2        | 12.1        | 9.1         | 11.7        | ISCED 4-6                           |
|             |             |             |            |             |            |             |            |             |            |             |             |             |             | <b>By activity and gender</b>       |
| 15.0        | 19.0        | 6.7         | 2.8        | 2.5         | 3.3        | 14.0        | 2.8        | 10.8        | 2.7        | 10.8        | 13.0        | 8.3         | 12.1        | Employed<br>Females                 |
| 26.5        | 22.1        | 13.7        | 6.1        | 5.6         | 5.1        | 18.9        | 5.0        | 13.5        | 3.9        | 13.7        | 15.0        | 12.8        | 14.3        | Unemployed                          |
| 30.1        | 33.3        | 18.1        | 19.2       | 21.4        | 9.6        | 28.0        | 17.2       | 42.4        | 11.9       | 17.9        | 21.4        | 23.6        | 21.1        | Inactive                            |
| 14.0        | 17.5        | 9.6         | 2.9        | 2.0         | 5.8        | 14.4        | 2.6        | 9.2         | 2.4        | 10.7        | 12.5        | 7.9         | 11.6        | Employed<br>Males                   |
| 29.7        | 27.1        | 27.1        | 6.2        | 3.4         | 9.7        | 30.7        | 5.5        | 18.4        | 2.4        | 15.9        | 17.7        | 12.7        | 16.3        | Unemployed                          |
| 36.4        | 37.5        | 29.6        | 24.3       | 31.9        | 26.7       | 32.8        | 25.7       | 52.4        | 12.1       | 27.0        | 31.0        | 31.6        | 29.9        | Inactive                            |
| 14.5        | 18.3        | 8.3         | 2.9        | 2.3         | 5.0        | 14.2        | 2.7        | 10.0        | 2.5        | 10.7        | 12.7        | 8.1         | 11.8        | Employed<br>Total                   |
| 28.0        | 24.9        | 19.6        | 6.2        | 4.3         | 8.0        | 25.0        | 5.2        | 16.1        | 3.1        | 14.8        | 16.4        | 12.7        | 15.3        | Unemployed                          |
| 32.3        | 34.9        | 21.5        | 21.2       | 25.5        | 13.5       | 30.1        | 20.4       | 46.4        | 12.0       | 21.0        | 24.7        | 26.6        | 24.2        | Inactive                            |



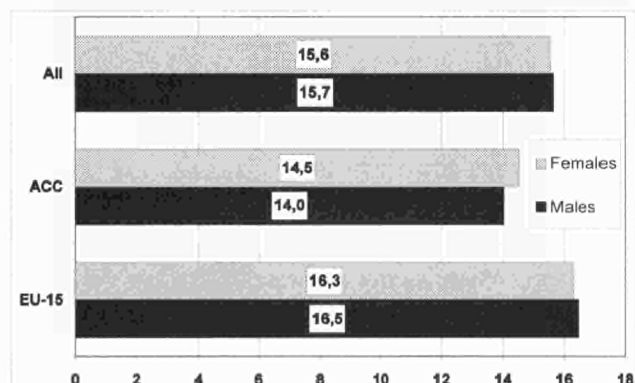
**Table 2: Distribution (%) of population with long-standing health problem or disability (LSHPD). Characteristics of LSHPD and assistance to work**

|   | EU-15        | ACC          | All          |              |              |
|---|--------------|--------------|--------------|--------------|--------------|
|   |              |              | F            | M            | All          |
| <b>Total all LSHPD</b>  | <b>100.0</b> | <b>100.0</b> | <b>100.0</b> | <b>100.0</b> | <b>100.0</b> |
| <b>Type of LSHPD</b>  |              |              |              |              |              |
| Arms or hands   | 6.6          | 3.8          | 7.1          | 5.8          | 6.4          |
| Legs or feet  | 11.4         | 14.0         | 11.3         | 12.0         | 11.7         |
| Back or neck  | 19.0         | 17.1         | 18.8         | 18.1         | 18.5         |
| Difficulties in seeing  | 2.6          | 4.3          | 2.6          | 3.0          | 2.8          |
| Difficulties in hearing   | 2.1          | 1.2          | 1.6          | 2.4          | 2.0          |
| Speech impediment   | 0.3          | 0.4          | 0.3          | 0.4          | 0.4          |
| Skin conditions   | 2.6          | 3.6          | 2.7          | 2.5          | 2.6          |
| Chest or breathing  | 10.6         | 6.1          | 9.9          | 10.1         | 10.0         |
| Heart, blood pressure or circulation  | 12.5         | 20.6         | 12.2         | 15.4         | 13.8         |
| Stomach, liver, kidney or digestive   | 5.1          | 7.1          | 5.3          | 5.6          | 5.4          |
| Diabetes  | 4.0          | 4.6          | 3.6          | 4.5          | 4.1          |
| Epilepsy  | 1.4          | 1.2          | 1.3          | 1.4          | 1.3          |
| Mental, nervous or emotional  | 9.6          | 7.7          | 9.5          | 9.4          | 9.5          |
| Other progressive illnesses   | 3.4          | 2.0          | 3.8          | 2.5          | 3.2          |
| Other LSHPD   | 8.9          | 6.2          | 9.9          | 6.9          | 8.4          |
| <b>Cause of LSHPD</b>   |              |              |              |              |              |
| Born with it or birth injury  | 17.9         | 10.8         | 16.5         | 17.3         | 16.9         |
| Work-related diseases   | 13.3         | 12.8         | 10.8         | 15.6         | 13.2         |
| Work-related accident or injury incl. traffic accidents at work                   | 5.6          | 3.5          | 2.8          | 7.7          | 5.2          |
| Traffic accident or injury (outside of work)                                      | 3.3          | 2.4          | 2.7          | 3.7          | 3.2          |
| Household, leisure and sports accident or injury                                  | 3.5          | 3.6          | 3.1          | 3.9          | 3.5          |
| Non-work-related diseases   | 50.2         | 56.6         | 55.8         | 44.8         | 50.3         |
| Do not know   | 6.1          | 10.4         | 8.4          | 7.1          | 7.7          |
| <b>Duration since onset</b>   |              |              |              |              |              |
| Less than 1 year  | 8.1          | 5.0          | 7.7          | 7.7          | 7.7          |
| 1 =< years < 2  | 7.8          | 5.8          | 7.7          | 7.4          | 7.5          |
| 2 =< years < 3  | 8.7          | 7.4          | 8.7          | 8.5          | 8.6          |
| 3 =< years < 5  | 13.7         | 13.6         | 13.9         | 13.7         | 13.8         |
| 5 =< years < 10   | 22.2         | 25.9         | 22.6         | 22.4         | 22.5         |
| >= 10 years   | 39.4         | 42.2         | 39.4         | 40.3         | 39.8         |
| <b>% of working persons with LSHPD restriction receiving assistance to work</b>   | <b>15.7</b>  | <b>11.4</b>  | <b>16.5</b>  | <b>15.5</b>  | <b>15.9</b>  |
| <b>Type of assistance provided to work (All types = 100%)</b>                     |              |              |              |              |              |
| Kind of work  | 37.1         | 51.5         | 37.4         | 40.2         | 38.9         |
| Amount of work  | 13.1         | 33.3         | 14.7         | 15.5         | 15.1         |
| Mobility to get to and from work  | 6.4          | 1.6          | 5.5          | 6.2          | 5.9          |
| Mobility at work  | 2.7          | 3.3          | 3.4          | 2.6          | 3.0          |
| Support and understanding by superiors and colleagues                             | 14.8         | 6.1          | 13.7         | 13.8         | 13.8         |
| Other   | 26.0         | 4.2          | 25.2         | 21.7         | 23.3         |
| <b>% of non-working persons with LSHPD restriction needing assistance to work</b> | <b>47.7</b>  | <b>25.5</b>  | <b>40.5</b>  | <b>47.2</b>  | <b>43.7</b>  |
| <b>Type of assistance needed to work (All types = 100%)</b>                       |              |              |              |              |              |
| Kind of work  | 29.8         | 57.2         | 32.1         | 34.1         | 33.1         |
| Amount of work  | 13.5         | 11.5         | 15.1         | 12.9         | 14.0         |
| Mobility to get to and from work  | 12.3         | 6.4          | 11.9         | 10.9         | 11.4         |
| Mobility at work  | 10.0         | 5.9          | 8.6          | 9.9          | 9.3          |
| Support and understanding by superiors and colleagues                             | 13.8         | 6.8          | 12.2         | 13.7         | 12.9         |
| Other   | 20.5         | 12.3         | 20.2         | 18.5         | 19.3         |

Note: 'All' includes also Norway and Romania

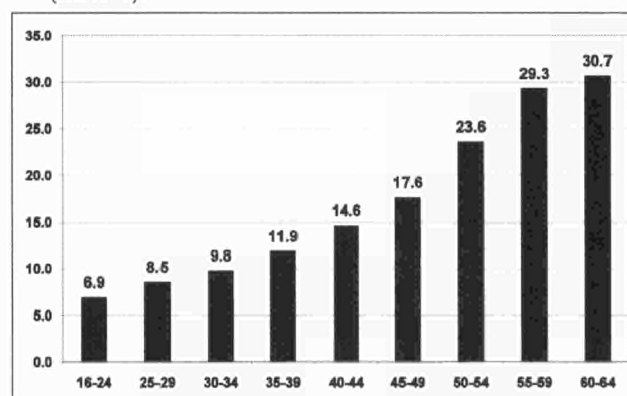
## Characteristics of disabled people

- Within most countries, the prevalence of LSHPD among women tends to be similar to the rate for men, but is, on average, slightly higher in the Acceding Countries (table 1).



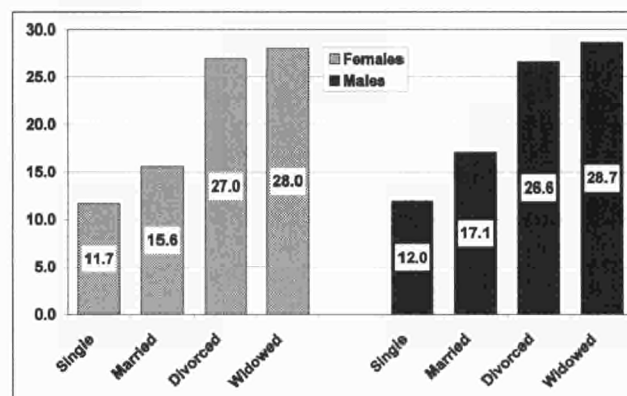
**Figure 2: Percentage of population aged 16-64 with a LSHPD by gender**

- The rates of LSHPD increase with age in all countries (table 1).



**Figure 3: Percentage of population aged 16-64 with a LSHPD by age. All countries**

- Since marital status is strongly related with age, it is not surprising that LSHPD rates are lowest for single persons and highest for the widowed, but the rates are also much larger for the divorced than for married persons (table 1).



**Figure 4: Percentage of population aged 16-64 with a LSHPD by marital status. All countries**

- The rates of LSHPD are much higher for persons with a lower level of education, particularly in the Acceding Countries (table 1).

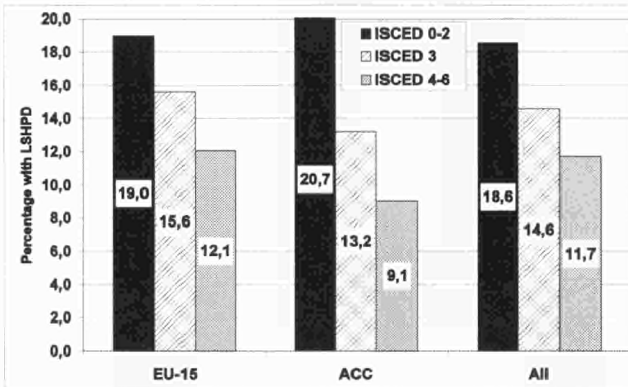


Figure 5: Percentage of population aged 16-64 with a LSHPD by educational level.

- The most common main types of disability are musculoskeletal problems, especially with the back or neck, legs or feet, followed by heart, blood pressure and circulation problems (table 2).

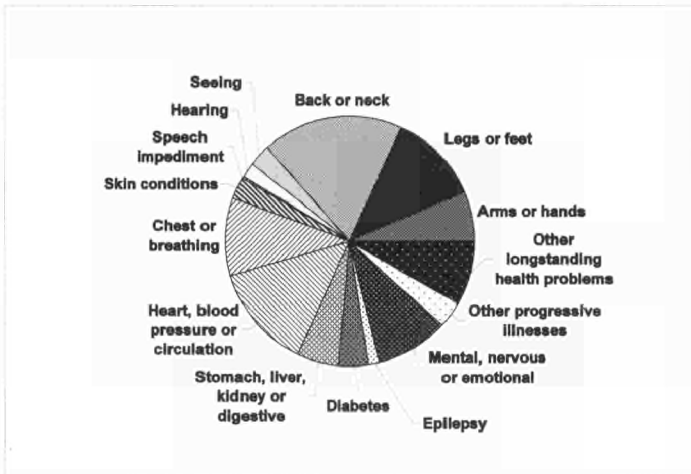


Figure 6: Distribution of population aged 16-64 with LSHPD by type. All countries

- For half of the persons with LSHPD, the cause is non-work related diseases. Only 16.9% have had such a condition since birth; the cause is work-related for 18.4% (13.2% for work-related diseases) (table 2).

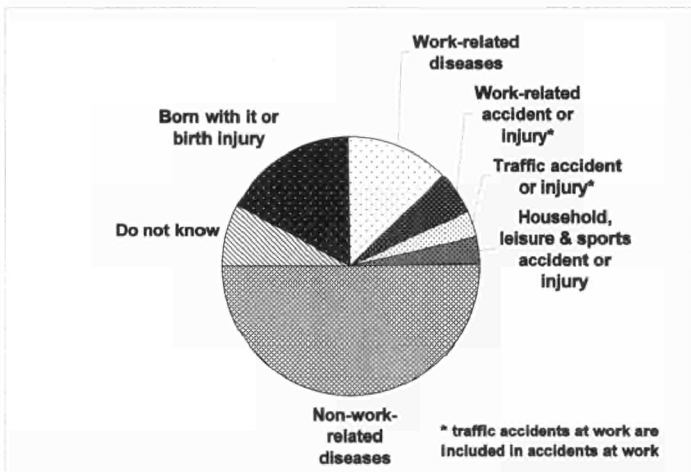


Figure 7: Distribution of population aged 16-64 with LSHPD by cause of LSHPD. All countries

## Assistance to work

Questions about assistance to work were asked to disabled persons who stated that they faced some kind of work restriction (as regards the type of work, the amount of work, or mobility to and from work). Those who were working were asked whether some form of assistance was *provided* to work. Those who were not working were asked whether some form of assistance was *needed* to work. (See Explanatory notes).

- Only 15.9% of working persons with LSHDP and facing work restrictions are provided with some assistance to work. However, this percentage masks wide country variations. The assistance provided at work relates mainly to the type of work performed (table 2).

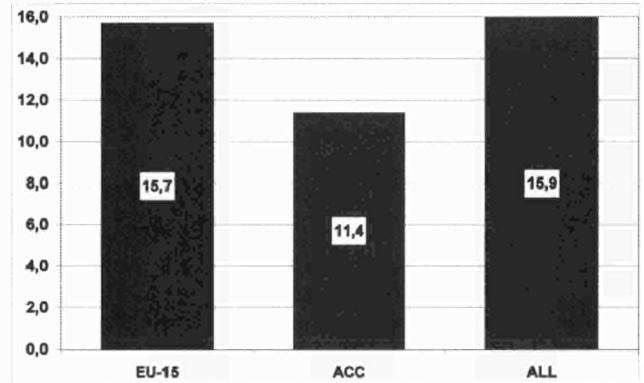


Figure 8: Working persons aged 16-64 facing work restrictions: percentage of those who are provided with some assistance to work.

- 43.7% of non-working persons with LSHDP and facing work restrictions consider that they would need some form of assistance to work. However, this percentage also varies widely among countries. The major type of assistance needed to work also relates to the kind of work performed (table 2).

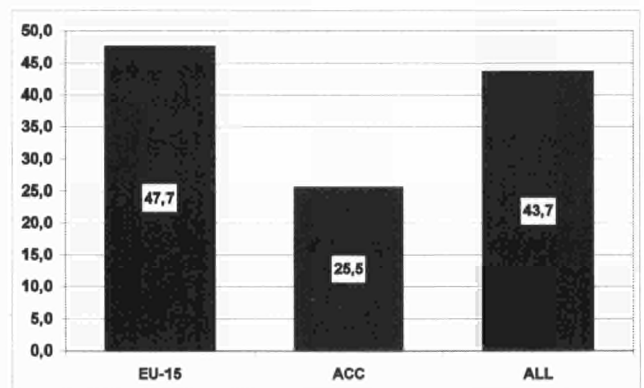


Figure 9: Non-working persons aged 16-64 facing work restrictions: percentage of those who would need some assistance to work.

**Table 3: Distribution of the population by LSHPD severity and percentage of the population with specific characteristics in each LSHPD severity group (%)**

|                              | EU15  | EUR12 | ACC   | All   |       |       |
|------------------------------|-------|-------|-------|-------|-------|-------|
|                              |       |       |       | F     | M     | All   |
| <b>Total (%)</b>             | 100.0 | 100.0 | 100.0 | 100.0 | 100.0 | 100.0 |
| Very severe                  | 5.2   | 5.4   | 6.3   | 5.8   | 5.5   | 5.7   |
| Severe                       | 4.3   | 4.4   | 3.7   | 4.2   | 4.0   | 4.1   |
| Moderate                     | 3.1   | 2.8   | 1.3   | 2.7   | 2.7   | 2.7   |
| Mild                         | 6.7   | 5.6   | 3.0   | 5.9   | 6.0   | 5.9   |
| Without LSHPD                | 80.7  | 81.8  | 85.7  | 81.7  | 81.7  | 81.6  |
| <b>Employed (%)</b>          |       |       |       |       |       |       |
| Very severe                  | 18.8  | 22.5  | 14.3  | 18.7  | 20.3  | 19.5  |
| Severe                       | 45.7  | 42.4  | 35.9  | 39.7  | 48.6  | 44.1  |
| Moderate                     | 67.8  | 64.4  | 57.7  | 59.1  | 73.7  | 66.7  |
| Mild                         | 76.6  | 67.8  | 69.1  | 68.3  | 82.3  | 75.6  |
| Not disabled                 | 68.0  | 64.7  | 66.4  | 58.1  | 77.2  | 67.6  |
| <b>Unemployed (%)</b>        |       |       |       |       |       |       |
| Very severe                  | 2.8   | 3.0   | 3.9   | 2.6   | 3.4   | 3.0   |
| Severe                       | 5.6   | 5.5   | 9.3   | 5.5   | 6.6   | 6.0   |
| Moderate                     | 6.2   | 5.8   | 6.9   | 5.4   | 7.0   | 6.2   |
| Mild                         | 3.5   | 3.8   | 3.9   | 3.3   | 3.7   | 3.5   |
| Without LSHPD                | 5.3   | 5.7   | 6.4   | 5.5   | 5.4   | 5.4   |
| <b>Inactive person (%)</b>   |       |       |       |       |       |       |
| Very severe                  | 78.4  | 74.6  | 81.8  | 78.7  | 76.3  | 77.5  |
| Severe                       | 48.7  | 52.2  | 54.8  | 54.8  | 44.7  | 49.8  |
| Moderate                     | 26.0  | 29.8  | 35.5  | 35.5  | 19.3  | 27.1  |
| Mild                         | 20.0  | 28.4  | 27.0  | 28.4  | 14.0  | 21.0  |
| Without LSHPD                | 26.7  | 29.6  | 27.2  | 36.4  | 17.4  | 26.9  |
| <b>Unemployment rate (%)</b> |       |       |       |       |       |       |
| Very severe                  | 12.8  | 11.7  | 21.6  | 12.2  | 14.2  | 13.3  |
| Severe                       | 10.9  | 11.4  | 20.6  | 12.1  | 12.0  | 12.1  |
| Moderate                     | 8.4   | 8.3   | 10.6  | 8.4   | 8.6   | 8.5   |
| Mild                         | 4.3   | 5.4   | 5.4   | 4.6   | 4.2   | 4.4   |
| Without LSHPD                | 7.2   | 8.1   | 8.8   | 8.6   | 6.5   | 7.4   |
| <b>ISCED 0-2 (%)</b>         |       |       |       |       |       |       |
| Very severe                  | 66.1  | 77.3  | 43.5  | 61.4  | 57.4  | 59.4  |
| Severe                       | 53.3  | 68.6  | 33.6  | 51.3  | 49.1  | 50.2  |
| Moderate                     | 37.4  | 54.0  | 23.7  | 36.8  | 35.8  | 36.3  |
| Mild                         | 31.7  | 47.8  | 19.1  | 32.7  | 28.7  | 30.7  |
| Without LSHPD                | 39.6  | 45.9  | 21.8  | 47.7  | 43.7  | 45.7  |
| <b>ISCED 4-6 (%)</b>         |       |       |       |       |       |       |
| Very severe                  | 8.1   | 6.5   | 8.6   | 8.8   | 8.3   | 8.5   |
| Severe                       | 13.0  | 10.2  | 7.8   | 13.5  | 11.2  | 12.4  |
| Moderate                     | 19.6  | 16.1  | 12.6  | 20.0  | 18.2  | 19.0  |
| Mild                         | 23.8  | 20.6  | 18.2  | 23.1  | 23.5  | 23.3  |
| Without LSHPD                | 21.8  | 20.0  | 18.1  | 15.8  | 14.9  | 15.3  |
| <b>Aged 16-29 (%)</b>        |       |       |       |       |       |       |
| Very severe                  | 9.1   | 8.8   | 7.2   | 8.1   | 10.2  | 9.1   |
| Severe                       | 10.9  | 9.1   | 9.6   | 10.2  | 11.1  | 10.7  |
| Moderate                     | 18.6  | 15.8  | 15.4  | 18.5  | 18.1  | 18.3  |
| Mild                         | 19.0  | 17.6  | 15.9  | 19.9  | 17.4  | 18.6  |
| Without LSHPD                | 89.6  | 90.4  | 95.2  | 90.1  | 90.7  | 90.4  |
| <b>Aged 50-64 (%)</b>        |       |       |       |       |       |       |
| Very severe                  | 55.7  | 58.2  | 59.5  | 56.0  | 55.8  | 55.9  |
| Severe                       | 49.6  | 53.4  | 58.6  | 50.1  | 52.0  | 51.0  |
| Moderate                     | 37.5  | 40.3  | 46.5  | 37.6  | 39.0  | 38.3  |
| Mild                         | 38.4  | 40.5  | 47.4  | 38.0  | 40.6  | 39.3  |
| Without LSHPD                | 65.6  | 67.5  | 67.9  | 67.1  | 71.5  | 66.5  |
| <b>Married (%)</b>           |       |       |       |       |       |       |
| Very severe                  | 56.1  | 60.1  | 61.3  | 57.7  | 56.6  | 57.2  |
| Severe                       | 61.2  | 65.9  | 66.3  | 61.9  | 62.4  | 62.2  |
| Moderate                     | 56.7  | 60.9  | 59.3  | 54.7  | 59.1  | 57.0  |
| Mild                         | 59.4  | 61.4  | 64.3  | 57.5  | 62.2  | 59.9  |
| Without LSHPD                | 55.6  | 56.9  | 57.1  | 58.2  | 54.3  | 56.2  |

Note: 'All' includes also Norway and Romania

## Restriction levels

- The severity of LSHPD tends to be higher in the Acceding countries than in the EU15 (table 3).

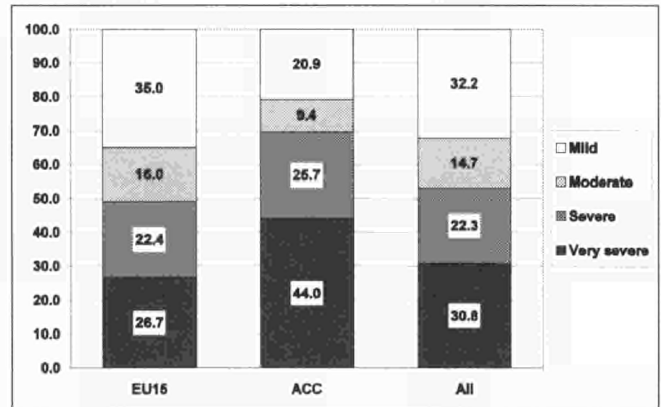


Figure 10: Population aged 16-64 with LSHPD by severity (%).

- The more severe the degree of disability, the lower the participation in the labour force: only 20% of the severely disabled as compared to 68% for those without LSHPD (table 3).

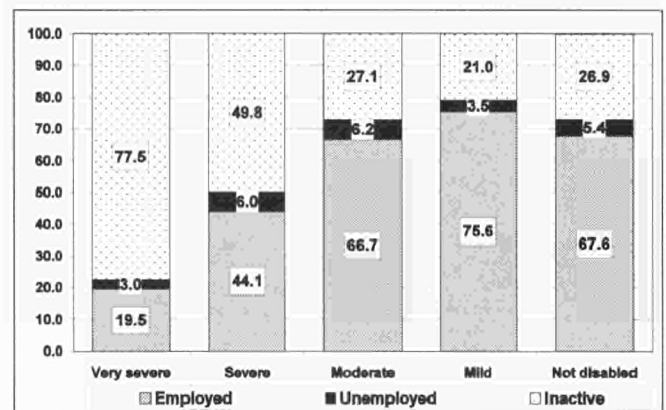


Figure 11: Distribution of population aged 16-64 by severity of disability and activity status (%). All countries

- However, the unemployment rate among the disabled is not higher than that for the non-disabled, possibly because of the 'discouraged worker' effect (table 3). Probably, many disabled persons know or believe that they are very unlikely to get a job, so that they do not even attempt to find one and are therefore classified as inactive.

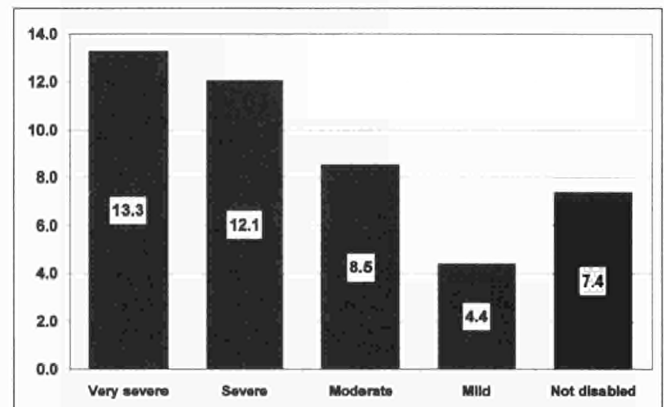


Figure 12: Unemployment rate (%) among the population aged 16-64 with and without LSHPD. All countries

## ➤ ESSENTIAL INFORMATION – METHODOLOGICAL NOTES

### Explanatory notes

In order to provide data for the European Year of People with Disabilities 2003, the 2002 European Union Labour Force Survey (LFS) contained an ad hoc module concerning the employment of disabled people. As set out by Commission Regulation (EC) No 1566/2001 of 12 July 2001, the module consists of 11 variables dealing with the existence, type, cause and duration of longstanding health problem or disability, work limitations (regarding the kind of work or the amount of work, and mobility problems), and assistance needed or provided to work. Although harmonised, translated questions for the variables were proposed by Eurostat, some rewording was felt necessary at national level, which may have some effect on the comparability of data.

A detailed description of the sampling methods and definitions for the LFS can be found in 'The Labour Force Survey – Methods and Definitions, 2001'.

The preliminary data come from the 15 Member States, 9 Acceding and Candidate Countries (excluding Bulgaria, Latvia, Poland and Turkey) and Norway.

### Basic concepts and definitions

All definitions apply to persons aged 16-64 years, living in private households.

**Disabled persons** were those who stated that they had a longstanding health problem or disability (**LSHPD**) for 6 months or more or expected to last 6 months or more.

**Restriction levels:** This criterion was constructed from the combination of the three variables on how disabled people are restricted regarding (1) the kind of work and (2) the amount of work that can be done, and (3) mobility to and from work. Possible replies were "Yes, considerably", "Yes, to some extent" and "No".

*Very severe disability* applies to those who replied "considerably" or "to some extent" to all three questions.

*Severe disability* applies to respondents who replied "considerably" or "to some extent" to two of the three questions.

*Moderate disability* applies to those who replied "considerably" or "to some extent" to one of the three questions.

*Mild disability* applies to those who replied "no" to the three questions, but had a LSHPD.

**Assistance needed / assistance provided:** Data on the type of assistance provided or needed applies to the sub-populations of disabled persons who answered "considerably" or "to some extent" to the question concerning problems of restriction in the kind of work, the amount of work or limitations in their mobility to and from work:

- For the assistance provided: persons who did some work for pay or profit lasting at least one hour during the reference week or were not working but had a job or business from which they were absent during the reference week.
- For the assistance needed: persons who were not working because they had been made redundant or who either did not have a job or business during the reference week.

Since the questions on LSHPD type, cause and on the type of assistance provided or needed were not compulsory in Germany and, concerning assistance needed, Hungary, EUR12, EU15 and All do not include these countries for the respective results.

The employment and activity related concepts and definitions used in the survey follow the guidelines of the International Labour Organisation:

**Employed persons** are those who during the reference week did some work for pay or profit lasting at least one hour, or were not working but had jobs from which they were temporarily absent. Family workers are included.

**Unemployed persons** comprise persons who were without work during the reference week, were currently available for work and were actively seeking work or who had found a job commencing at a later date.

**Inactive persons** are those who are neither classified as employed nor unemployed.

**The unemployment rate represents** unemployed persons as a percentage of the active population.

### Education

ISCED 0-2: includes all persons with up to lower secondary education or second stage of basic education.

ISCED 3: includes persons with (upper) secondary education.

ISCED 4-6: includes persons with post-secondary non-tertiary education or tertiary education.

**Country codes and codes for geographical aggregates** applied in this publication: BE (Belgium), DK (Denmark), DE (Germany), EL (Greece), ES (Spain), FR (France), IE (Ireland), IT (Italy), LU (Luxembourg), NL (Netherlands), PT (Portugal), AT (Austria), FI (Finland), SE (Sweden), UK (United Kingdom), EU-15 (European Union), EUR12 (Eurozone); CZ (Czech Republic), EE (Estonia), CY (Cyprus), LT (Lithuania), HU (Hungary), MT (Malta), SI (Slovenia), SK (Slovak Republic), ACC (Acceding Countries), NO (Norway), RO (Romania), All (EU-15, ACC, NO and RO).



# Further information:

## Databases

NewCronos, Theme 3, Domain: health

To obtain information or to order publications, databases and special sets of data, please contact the **Data Shop** network:

| DANMARK   | DEUTSCHLAND  | ESPAÑA   | FRANCE  | ITALIA - Roma   |
|---|--|--|---|---|
| <b>DANMARKS STATISTIK</b><br>Bibliotek og Information<br><b>Eurostat Data Shop</b><br>Sejregade 11<br>DK-2100 KØBENHAVN Ø<br>Tlf. (45) 39 17 30 30<br>Fax (45) 39 17 30 03<br>E-mail: bib@dst.dk<br>URL: <a href="http://www.dst.dk/bibliotek">http://www.dst.dk/bibliotek</a>  | <b>Statistisches Bundesamt</b><br><b>Eurostat Data Shop Berlin</b><br>Otto-Braun-Straße 70-72<br>(Eingang: Karl-Marx-Allee)<br>D-10178 Berlin<br>Tel. (49) 1888-644 94 27/28<br>(49) 611 75 94 27<br>Fax (49) 1888-644 94 30<br>E-Mail: <a href="mailto:datashop@destatis.de">datashop@destatis.de</a><br>URL: <a href="http://www.eu-datashop.de/">http://www.eu-datashop.de/</a> | <b>INE</b><br><b>Eurostat Data Shop</b><br>Paseo de la Castellana, 183<br>Despacho D11B<br>Entrada por Estébanez Calderón<br>E-28046 MADRID<br>Tel. (34) 915 839 167/ 915 839 500<br>Fax (34) 915 830 357<br>E-mail: <a href="mailto:datashop.eurostat@ine.es">datashop.eurostat@ine.es</a><br>URL: <a href="http://www.ine.es/produser/datashop/index.html">http://www.ine.es/produser/datashop/index.html</a><br>Member of the MIDAS Net | <b>INSEE Info Service</b><br><b>Eurostat Data Shop</b><br>195, rue de Bercy<br>Tour Gamma A<br>F-75582 PARIS CEDEX 12<br>Tél. (33) 1 53 17 88 44<br>Fax (33) 1 53 17 88 22<br>E-mail: <a href="mailto:datashop@insee.fr">datashop@insee.fr</a><br>Member of the MIDAS Net   | <b>ISTAT</b><br><b>Centro di informazione statistica</b><br><b>Sede di Roma</b><br><b>Eurostat Data Shop</b><br>Via Cesare Balbo, 11a<br>I-00184 Roma<br>Tel. (39) 06 46 73 32 28<br>Fax (39) 06 46 73 31 01/ 07<br>E-mail: <a href="mailto:datashop@istat.it">datashop@istat.it</a><br>URL: <a href="http://www.istat.it/Prodotti-e/Allegati/Eurostatdatashop.html">http://www.istat.it/Prodotti-e/Allegati/Eurostatdatashop.html</a><br>Member of the MIDAS Net |
| ITALIA - Milano   | NEDERLAND  | PORTUGAL   | SUOMI/FINLAND   | SVERIGE   |
| <b>ISTAT</b><br><b>Ufficio Regionale per la Lombardia</b><br><b>Eurostat Data Shop</b><br>Via Fieno 3<br>I-20123 MILANO<br>Tel. (39) 02 80 61 32 460<br>Fax (39) 02 80 61 32 304<br>E-mail: <a href="mailto:mileuro@tin.it">mileuro@tin.it</a><br>URL: <a href="http://www.istat.it/Prodotti-e/Allegati/Eurostatdatashop.html">http://www.istat.it/Prodotti-e/Allegati/Eurostatdatashop.html</a><br>Member of the MIDAS Net | <b>Centraal Bureau voor de Statistiek</b><br><b>Eurostat Data Shop - Voorburg</b><br>Postbus 4000<br>NL-2270 JM VOORBURG<br>Nederland<br>Tel. (31) 70 337 49 00<br>Fax (31) 70 337 59 84<br>E-mail: <a href="mailto:datashop@cbs.nl">datashop@cbs.nl</a><br>URL: <a href="http://www.cbs.nl/eurodatashop">www.cbs.nl/eurodatashop</a>  | <b>Eurostat Data Shop Lisboa</b><br><b>INE/Serviço de Difusão</b><br>Av. António José de Almeida, 2<br>P-1000-043 LISBOA<br>Tel. (351) 21 842 61 00<br>Fax (351) 21 842 63 64<br>E-mail: <a href="mailto:data.shop@ine.pt">data.shop@ine.pt</a>  | <b>Statistics Finland</b><br><b>Eurostat Data Shop Helsinki</b><br><b>Tilastokirjasto</b><br>PL 2B<br>FIN-00022 Tilastokeskus<br>Työpajakatu 13 B, 2 Kerros, Helsinki<br>P. (358) 9 17 34 22 21<br>F. (358) 9 17 34 22 79<br>Sähköposti: <a href="mailto:datashop@stat.fi">datashop@stat.fi</a><br>URL: <a href="http://www.tilastokeskus.fi/tk/kk/datashop/">http://www.tilastokeskus.fi/tk/kk/datashop/</a> | <b>Statistics Sweden</b><br><b>Information service</b><br><b>Eurostat Data Shop</b><br>Karlavägen 100 - Box 24 300<br>S-104 51 STOCKHOLM<br>Tfn (46) 8 50 69 48 01<br>Fax (46) 8 50 69 48 99<br>E-post: <a href="mailto:infoservice@scb.se">infoservice@scb.se</a><br>URL: <a href="http://www.scb.se/templates/Standard_22884.asp">http://www.scb.se/templates/Standard_22884.asp</a>  |
| UNITED KINGDOM  | NORGE  | SCHWEIZ/SUISSE/SVIZZERA  | UNITED STATES OF AMERICA  |   |
| <b>Eurostat Data Shop</b><br><b>Office for National Statistics</b><br>Room 1.015<br>Cardiff Road<br>Newport South Wales NP10 8XG<br>United Kingdom<br>Tel. (44) 1633 81 33 69<br>Fax (44) 1633 81 33 33<br>E-mail: <a href="mailto:eurostat.datashop@ons.gov.uk">eurostat.datashop@ons.gov.uk</a>   | <b>Statistics Norway</b><br><b>Library and Information Centre</b><br><b>Eurostat Data Shop</b><br>Kongens gate 6<br>Boks 8131 Dep.<br>N-0033 OSLO<br>Tel. (47) 21 09 46 42 / 43<br>Fax (47) 21 09 45 04<br>E-mail: <a href="mailto:Datashop@ssb.no">Datashop@ssb.no</a><br>URL: <a href="http://www.ssb.no/biblioteket/datashop/">http://www.ssb.no/biblioteket/datashop/</a>      | <b>Statistisches Amt des Kantons Zürich</b><br><b>Eurostat Data Shop</b><br>Bleichenweg 5<br>CH-8090 Zürich<br>Tel. (41) 1 225 12 12<br>Fax (41) 1 225 12 99<br>E-mail: <a href="mailto:datashop@statistik.zh.ch">datashop@statistik.zh.ch</a><br>URL: <a href="http://www.statistik.zh.ch">http://www.statistik.zh.ch</a>   | <b>Harver Analytics</b><br><b>Eurostat Data Shop</b><br>60 East 42nd Street<br>Suite 3310<br>NEW YORK, NY 10165<br>USA<br>Tel. (1) 212 986 93 00<br>Fax (1) 212 986 69 81<br>E-mail: <a href="mailto:eurodata@haver.com">eurodata@haver.com</a><br>URL: <a href="http://www.haver.com/">http://www.haver.com/</a>   |   |

Media Support Eurostat (for professional journalists only):  
Bech Building Office A4/017 • L-2920 Luxembourg • Tel. (352) 4301 33408 • Fax (352) 4301 35349 • e-mail: [eurostat-mediasupport@cec.eu.int](mailto:eurostat-mediasupport@cec.eu.int)

### For information on methodology:

Didier Dupré, Eurostat/D6, L-2920 Luxembourg, Tel. (352) 4301 35034, Fax (352) 4301 35399, E-mail: [Didier.Dupre@cec.eu.int](mailto:Didier.Dupre@cec.eu.int)

Antti Karjalainen, Eurostat/D6, L-2920 Luxembourg, Tel. (352) 4301 32693, Fax (352) 4301 35399,

E-mail: [Antti.Karjalainen@cec.eu.int](mailto:Antti.Karjalainen@cec.eu.int)

Aurélie Jacquin and Renaud Decoster carried out the data processing and statistical analysis

ORIGINAL: English

Please visit our web site at [www.europa.eu.int/comm/eurostat/](http://www.europa.eu.int/comm/eurostat/) for further information!

A list of worldwide sales outlets is available at the **Office for Official Publications of the European Communities**.

2 rue Mercier - L-2985 Luxembourg  
Tel. (352) 2929 42118 Fax (352) 2929 42709  
URL: <http://publications.eu.int>  
E-mail: [info-info-opoce@cec.eu.int](mailto:info-info-opoce@cec.eu.int)

BELGIQUE/BELGIË - DANMARK - DEUTSCHLAND - GRECE/ELLADA - ESPAÑA - FRANCE - IRELAND - ITALIA - LUXEMBOURG - NEDERLAND - ÖSTERREICH  
PORTUGAL - SUOMI/FINLAND - SVERIGE - UNITED KINGDOM - ISLAND - NORGE - SCHWEIZ/SUISSE/SVIZZERA - BALGARIJA - ČESKÁ REPUBLIKA - CYPRUS  
EESTI - HRVATSKA - MAGYARORSZÁG - MALTA - POLSKA - ROMÂNIA - RUSSIA - SLOVAKIA - SLOVENIA - TÜRKIYE - AUSTRALIA - CANADA - EGYPT - INDIA  
ISRAËL - JAPAN - MALAYSIA - PHILIPPINES - SOUTH KOREA - THAILAND - UNITED STATES OF AMERICA

## Order form

I would like to subscribe to *Statistics in focus* (from 1.1.2003 to 31.12.2003):

(for the Data Shop and sales office addresses see above)

All 9 themes (approximately 200 issues)

Paper: EUR 240

Language required:  DE  EN  FR

*Statistics in focus* can be downloaded (pdf file) free of charge from the Eurostat web site. You only need to register. For other solutions, contact your Data Shop.

Please send me a free copy of 'Eurostat mini-guide' (catalogue containing a selection of Eurostat products and services)

Language required:  DE  EN  FR

I would like a free subscription to 'Statistical References', the information letter on Eurostat products and services

Language required:  DE  EN  FR

Mr  Mrs  Ms

(Please use block capitals)

Surname: \_\_\_\_\_ Forename: \_\_\_\_\_

Company: \_\_\_\_\_ Department: \_\_\_\_\_

Function: \_\_\_\_\_

Address: \_\_\_\_\_

Post code: \_\_\_\_\_ Town: \_\_\_\_\_

Country: \_\_\_\_\_

Tel.: \_\_\_\_\_ Fax: \_\_\_\_\_

E-mail: \_\_\_\_\_

Payment on receipt of invoice, preferably by:

Bank transfer

Visa  Eurocard

Card No: \_\_\_\_\_ Expires on: \_\_\_\_/\_\_\_\_/\_\_\_\_

Please confirm your intra-Community VAT number:

If no number is entered, VAT will be automatically applied. Subsequent reimbursement will not be possible.