

*G Chir Vol. 37 - n. 3 - pp. 133-135
May-June 2016*

clinical practice

Rectal bleeding and prolapse... not always benign diseases rather anal cancer. The importance of a correct decision making since primary care

G. COCORULLO, R. TUTINO, N. FALCO, T. FONTANA, G. SALAMONE, L. LICARI, G. GULOTTA

SUMMARY: Rectal bleeding and prolapse... not always benign diseases rather anal cancer. The importance of a correct decision making since primary care.

G. COCORULLO, R. TUTINO, N. FALCO, T. FONTANA, G. SALAMONE, L. LICARI, G. GULOTTA

Rectal bleeding is very common in general population with a prevalence of 10-20 %. Primary care physicians have to stratify patients basing on urgency and on the colo-rectal cancer risk and to conduct a decision making for the correct management. We report a case of a 61-years-old woman, complaining rectal bleeding and an anal mass attended to their family doctor who does a visit but without a digital rectal examination and diagnosed a hemorrhoidal prolapse suggesting me-

dical therapy. For the persistence of symptoms she comes to our service from emergency attention. Inspection and digital rectal examination revealed an anal mass. CT scan was performed showing a large anal mass involving half anal circumference. Histologic samples showed an epithelial proliferation compatible with a squamous carcinoma. Oncological consult was requested and a chemo-radiotherapy treatment was proposed. This case report highlights the difficulty when physicians assess patients with anorectal complaints in differentiating anal cancer from benign disease, presumably because symptoms are similar. Primary care physicians must maintain a high index of suspicion of cancer in high-risk population. Sensitization of these colleagues is required since digital rectal examination is of inestimable value to verify the presence of a rectal or an anal mass.

KEY WORDS: Rectal bleeding - Anal cancer - Prolapse - Digital rectal examination.

Introduction

Rectal bleeding is very common in general population with a prevalence of 10-20 % (1). Its incidence is around 1.6/1000 inhabitants; 2.4-11% of them harboring colo-rectal cancer (2). The number of patients that recur to primary care for rectal bleeding is 4-6/1000 inhabitants (1). Nevertheless around the 30% of the patients never consult a physician for this problem (3). Primary care physicians have to stratify patients basing on urgency and on the colo-rectal cancer risk and to conduct a decision making for the correct management (2).

Case report

A 61-years-old woman, complaining rectal bleeding and an anal mass, attended to their family doctor who does a

visit with inspection but without a digital rectal examination (DRE). He concluded that the matter was a hemorrhoidal prolapse and suggested a medical therapy. Because of the persistence of the rectal bleeding, the patient attended to the emergency attention of a city hospital where the already proposed diagnosis was confirmed and the patient dismissed.

Finally, she comes to our emergency attention and she was referred to the Emergency and General Surgery Department for the presence of "rectal bleeding in patient with anal mass" (Fig. 1).

At the admittance she has an arterial pressure of 90/70 mmHg and a pulse of 100 bpm. Laboratory tests showed Hgb 9 g/dl; Hematocrit 30.6 %; MCV 93.9 fL; WBC 16620; PLT 340000; metabolic panel, liver function tests and coagulation were within normal limits.

The visit assessed the presence of an anal malignancy arising from the anal verge that allowed the passage of the finger and occupied almost half circumference (Fig. 2).

A gynecological consult was undertaken and it verified the integrity of the vagina.

It was done a thorax-abdominal CT scan that showed the presence in the anus of a neoplasm (DAP 8 cm; DT 3 cm) extending in the cutis until the vulva, with copro-

Department of Surgical, Oncological and Oral Sciences,
General Surgery and Emergency Operative Unit,
Policlinico Universitario "P. Giaccone", Palermo, Italy

Corresponding author: Nicolò Falco, e-mail: nicola.falco87@libero.it

© Copyright 2016, CIC Edizioni Internazionali, Roma



Fig. 1 - Anal mass confounded with a rectal prolapse at inspection.



Fig. 2 - Rectoscope inserted in the anal verge to demonstrate the passage.

stasis. No lesion suspected for secundarism (Figs 3, 4).

The mass was submitted to biopsy for the histologic confirmation, which showed an epithelial proliferation compatible with a squamous carcinoma.

Oncological consult was requested and a chemo-radiotherapy treatment was proposed.

Discussion

Rectal bleeding can be related to several diagnoses but the presence of malignancies is a matter that has to be considered in each of these cases.

Anal squamous cell carcinoma (ASCC) is an uncommon malignancy; its incidence has been increasing markedly in recent decades, in association with human papilloma virus infection (4).

In 2016, it is estimated that 8,080 new cases of anal cancer will be diagnosed and 1,080 deaths will be caused by this disease in the United States. Five-year survival has remained fairly constant since 1975 and on the basis of data from 2005 to 2011, is 65.7% (5).

Chiu et al. report that although most patients sought medical attention promptly, 19% of them waited for more than 6 months. The first visit after rising up some symptoms foresees a rectal examination, which was performed in only 54% of patients and which gives a diagnosis of hemorrhoids in 27% of patients. Further investigations were ordered in only 54% of patients. If a misdiagnosis of hemorrhoids was made, substantially more visits were required to diagnose the cancer. An average of 3.2 months after the

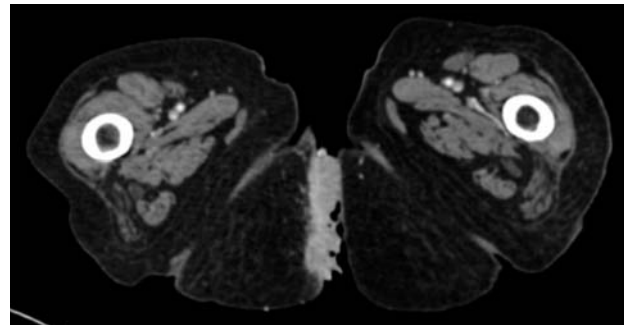


Fig. 3 - Abdominal CT-scan showing anal mass.

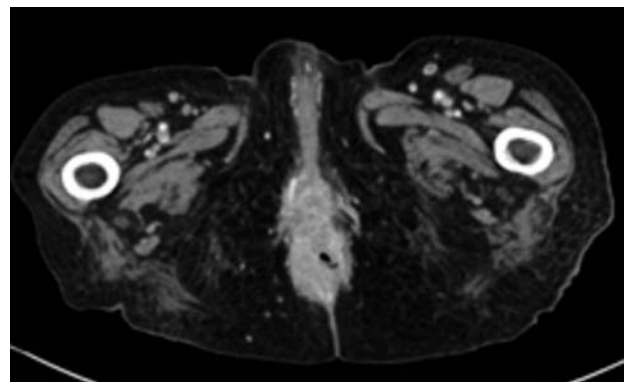


Fig. 4 - Abdominal CT-scan showing anal mass.

first visit to a physician and 7.4 months after onset of symptoms was needed to obtain a diagnosis of cancer (6).

Carter suggested it is vital for general practitioners to perform digital rectal examination for even trivial anorectal symptoms and then to proceed to a speedy referral when indicated (7).

Established the diagnosis, the well-established standard of care for localized ASCC consists in the combination of 5-fluorouracil and mitomycin chemotherapy, concurrent with external beam radiation therapy (4).

Delays in diagnosis might lead to higher cancer stages at presentation and, therefore, to worse survival (6).

In the management of rectal bleeding the personal anamnesis comprising age, comorbidities, family history, drugs administration have to be collected (8). The investigation of the accompanying symptoms that arise from fever, abdominal pain, weight loss, bowel changes, mucus dismission, tenesmus and anal pain is of undoubtable value.

Inspection of the abdomen and digital examination are of inestimable value to verify the presence of a mass.

Less than 50% of patients who complain rectal bleeding are submitted to a rectal exploration and this occurs for saving time, for the absence of an accompanying person or to avoid a double examination in patients to send for a specialist consult or to emergency (3).

Patients were referred for a second consult in 70% if < 50 years-old and 76.8% if > 50 years-old (9).

Since in patients <40 years-old there is a 2-9% of CCR, in these patients with a rectal bleeding without other symptoms a sigmoidoscopy should be recommended (3, 10).

References

1. Alonso P, Marzo M, Mascort JJ, Hervàs A, Vinas L, Ferrus J, et al. Guía de práctica clínica sobre el manejo del paciente con rectorragia. *Gastroenterol Hepatol.* 2002;25(10):605-632.
2. Bekkink MO, McCowan C, Falk GA, Teljeur C, Van de Laar FA, Fahey T. Diagnostic accuracy systematic review of rectal bleeding in combination with other symptoms, signs and tests in relation to colorectal cancer. *Br J Cancer.* 2010;102(1):48-58.
3. Khan R, Hyman D. Hematochezia in the young patient: a review of health-seeking behavior, physician attitudes, and controversies in management. *Dig Dis Sci.* 2010;55(2):233-239.
4. Julie DR, Goodman KA. Advances in the Management of Anal Cancer. *Curr Oncol Rep.* 2016;18(3):1-12.
5. National Cancer Institute: PDQ® Anal Cancer Prevention. Bethesda, MD: National Cancer Institute. Date last modified 02/2016.
6. Chiu S, Joseph K, Ghosh S, Cornand RM, Schiller D. Reasons for delays in diagnosis of anal cancer and the effect on patient satisfaction. *Can Fam Physician.* 2015;61(11):e509-e516.
7. Carter P. Anal cancer: the case for earlier diagnosis. *J R Soc Med.* 1991;84(11):695.
8. Trompetto M, Clerico G, Cocorullo G, Giordano P, Marino F, Martellucci J, et al. Evaluation and management of hemorrhoids: Italian society of colorectal surgery (SICCR) consensus statement. *Tech Coloproctol.* 2015;19(10):567-575.
9. Heintze C, Summerton N, Matysiak-Klose D, Kröhn T, Wolf U, Brand A, et al. Diagnostic work-up of rectal bleeding in general practice. *Br J Gen Pract.* 2005;55(510):14-19.
10. Khalid AB, Majid S, Salih M, Hashmat F, Jafri W. Is full colonoscopic examination necessary in young patients with fresh bleeding per rectum? *Endoscopy.* 2011;43(8):692-696.
11. Raje D, Mukhtar H, Oshowo A, Clark CI. What proportion of patients referred to secondary care with iron deficiency anemia have colon cancer? *Dis Colon Rectum.* 2007;50(8):1211-1214.
12. Salamone G, Falco N, Atzeni J, Tutino R, Licari L, Gulotta G. Colonic stenting in acutely obstructed left-sided colon cancer: Clinical evaluation and cost analysis. *Ann Ital Chir.* 2014;85(6):556-62.
13. Giaccaglia V, Antonelli MS, Chieco PA, Cocorullo G, Cavallini M, Gulotta G. Technical characteristics can make the difference in a surgical linear stapler. Or not? *J Surg Res.* 2015;197(1):101-106.
14. Del Giudice ME, Vella ET, Hey A, Simunovic M, Harris W, Levitt C. Guideline for referral of patients with suspected colorectal cancer by family physicians and other primary care providers. *Can Fam Physician.* 2014;60(8):717-723.