



UNIVERSITÀ  
DEGLI STUDI  
DI PADOVA

*Università degli Studi di Padova*

*Padua Research Archive - Institutional Repository*

Dolphin Morbillivirus Associated with a Mass Stranding of Sperm Whales, Italy

*Original Citation:*

*Availability:*

This version is available at: 11577/3213840 since: 2020-03-16T22:01:08Z

*Publisher:*

*Published version:*

DOI: 10.3201/eid2301.160239

*Terms of use:*

Open Access

This article is made available under terms and conditions applicable to Open Access Guidelines, as described at <http://www.unipd.it/download/file/fid/55401> (Italian only)

(Article begins on next page)

## Dolphin Morbillivirus Associated with a Mass Stranding of Sperm Whales, Italy

Sandro Mazzariol, Cinzia Centelleghé, Andrea Di Provvido, Ludovica Di Renzo, Giusy Cardeti, Antonella Cersini, Gianluca Fichi, Antonio Petrella, Cristina Esmeralda Di Francesco, Walter Mignone, Cristina Casalone, Giovanni Di Guardo

Author affiliations: University of Padova Department of Comparative Biomedicine and Food Science, Padua, Italy (S. Mazzariol, C. Centelleghé); Istituto Zooprofilattico Sperimentale dell'Abruzzo e Molise, Teramo, Italy (A. Di Provvido, L. Di Renzo); Istituto Zooprofilattico Sperimentale del Lazio e della Toscana, Rome, Italy (G. Cardeti, A. Cersini); Istituto Zooprofilattico Sperimentale del Lazio e della Toscana, Pisa, Italy (G. Fichi); Istituto Zooprofilattico Sperimentale della Puglia e della Basilicata, Foggia, Italy (A. Petrella); University of Teramo Faculty of Veterinary Medicine, Teramo (G. Di Guardo G., C.E. Di Francesco); Istituto Zooprofilattico Sperimentale del Piemonte, Liguria e Valle d'Aosta, Imperia, Italy (W. Mignone); Istituto Zooprofilattico Sperimentale del Piemonte, Liguria e Valle d'Aosta, Turin, Italy (C. Casalone)

DOI: <http://dx.doi.org/10.3201/eid2301.160239>

In September 2014, seven sperm whales were stranded along Italy's Adriatic coastline. Postmortem investigations on 3 female adult whales and 1 male fetus carried by the largest female revealed molecular and immunohistochemical evidence of dolphin morbillivirus infection. A possible role of the virus in the stranding event was considered.

The mass strandings of sperm whales (*Physeter macrocephalus*) are still largely unexplained events. Solar cycles, weather conditions, coastal geographic features, and human activities have been proposed as possible causes (1). Although a multifactorial etiology was hypothesized to be responsible for a mass stranding that occurred in December 2009 involving 7 male sperm whales along the southern Adriatic coast of Italy (1), well-defined causes of similar events are rarely identified.

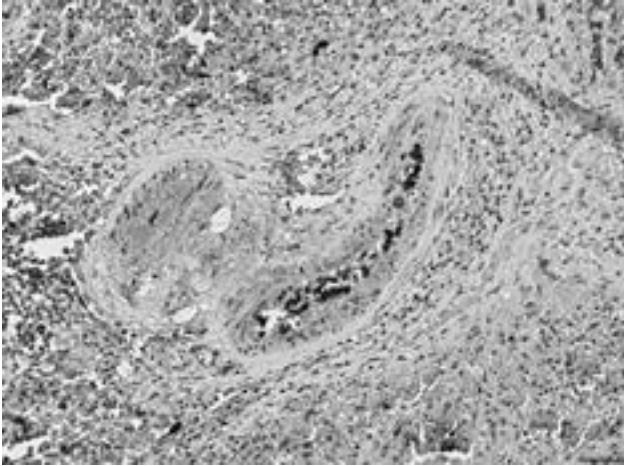
In September 2014, seven sperm whales were found stranded along the central Adriatic Italian coastline; 4 of these whales were refloated. Three females (sperm whale 1 [SW1], pregnant, total length 8.95 m; SW2, total length 8.38 m; and SW3, total length 7.33 m) died on the beach, and postmortem analyses revealed that the largest animal,

a pregnant female (SW1), whose male fetus (SW1b) also died, was affected by a prominent hydronephrosis caused by a large stone occupying >50% of the right kidney pelvis. This condition might have resulted in renal function impairment. We observed microscopically evidence of lymphoid cell depletion in several secondary lymphoid tissues from all 3 adult whales, and we found definitive biomolecular evidence of dolphin morbillivirus (DMV) infection in the 3 adult whales and in the fetus.

Our use of 1-step PCR protocols (2) failed to sequence any viral fragment, probably because of postmortem changes and subsequent viral RNA degradation by ribonucleases, which progress rapidly in large whales because of their body features and size and thus affect the integrity of the DMV genome. Therefore, we used a more sensitive, nested reverse transcription PCR technique that targeted a highly preserved fragment of the viral hemagglutinin (H) gene (3) to investigate the lung (SW1), brain (SW3), and lymphoid tissues (SW2 and SW3) of the 3 adult whales and the lung, kidney, and liver of the fetus (SW1b). We found all of these tissues to be positive for DMV, and we analyzed the gene sequences obtained from the 4 whales' tissues by using an ad hoc computer program (Lasergene package version SeqMan Pro; DNASTAR Inc., Madison, WI, USA). The hemagglutinin consensus fragment obtained from all the positive samples showed 100% sequence homology with the corresponding DMV genome sequence (GenBank accession no. AJ608288). In addition, we observed simultaneous immunohistochemical (IHC) evidence of DMV nucleoprotein antigen in macrophages and follicular dendritic-like cells from the white pulp of the spleen from the youngest female whale (SW3) and in monocytes circulating within splenic blood vessels from the same animal (Figure). Other target tissues from this whale and the 3 others were either negative or unsuitable for IHC and biomolecular analyses.

Although we did not observe any classic DMV-related pathologic changes during postmortem examinations (2,4), we strongly suspected a viremic condition in all 4 whales on the basis of IHC (SW3) and biomolecular (SW1, SW1b, SW2, and SW3) findings. In this respect, the consistent immunolabeling of morbillivirus antigens in circulating monocytes and in splenic follicular-like dendritic cells support the hypothesis that DMV infection was in an early developmental stage (5). Experimental studies conducted on similar morbillivirus infection models show that during this period, even if no severe clinical signs are observed, a general discomfort condition, secondary to viremic circulation, could be reasonably expected (6,7).

DMV infection has been frequently associated with mass deaths during epidemic outbreaks (2); however, it has been seldom reported in single mass stranding events among cetaceans in general, much less among sperm



**Figure.** Spleen of the youngest female sperm whale (SW3) in study of 7 sperm whales stranded along Italy's Adriatic coastline in September 2014. Positive immunostaining (Mayer's hematoxylin counterstain) for morbilliviral antigen is shown in monocytes within vascular lumina and in follicular dendritic-like cells in the splenic white pulp. Morbillivirus immunohistochemistry was conducted with a murine monoclonal antibody against canine distemper virus nucleoprotein (VMRD Inc., Pullman, WA, USA). Original magnification  $\times 20$ ; scale bar indicates 50  $\mu\text{m}$ . A color version of this figure is available online (<http://wwwnc.cdc.gov/EID/article/23/1/16-0239-F1.htm>).

whales. Furthermore, given the documented susceptibility of sperm whales to cetacean morbillivirus and the likelihood of maternal–fetal transfer of the virus (8), the biomolecular evidence of DMV infection obtained in the fetal sperm whale in our investigation strongly supports the assumption of a transplacentally acquired infection in this animal.

Although no clear-cut evidence exists that DMV was the primary cause of the mass stranding of sperm whales we report, a vast body of scientific literature is available to support the primary pathogenicity of morbillivirus genus members for their mammalian hosts, including aquatic mammals (3). In this respect, previous studies would suggest that chemical pollutants, especially methylmercury, were a relevant causative factor in the stranding and subsequent deaths of the 3 sperm whales in our study (9). However, our findings suggest the possible additional role of the DMV infection in this event because it is one of the factors that could explain the whales' northward trajectory into the Adriatic Sea, which is known to be a cul-de-sac for this species (1).

In conclusion, although a vast body of scientific data supports the direct involvement of cetacean morbillivirus clade members such as DMV in the numerous epidemics that have occurred in the last 25–30 years among free-ranging cetaceans worldwide (2), their causative role in single mass stranding events cannot be precisely defined. Several additional biologic, ecologic, and environmental factors should be investigated by using a multidisciplinary approach (10).

## Acknowledgments

We would like to thank Bruno Cozzi for providing archival tissues from the Mediterranean Marine Mammal Tissue Bank; Michele Povinelli and Emanuele Zanetti for their invaluable technical work during necropsies in the field; and Vincenzo Olivieri and staff from Centro Studi Cetacei for their logistic support and their efforts during the sperm whales' refloatation.

This study was funded by Italy's Ministry for the Environment, Land, and Sea.

Dr. Sandro Mazzariol is an assistant professor in the Department of Comparative Biomedicine and Food Science of the University of Padova. His primary research interests are diseases and pathologies of marine mammals.

## References

- Mazzariol S, Di Guardo G, Petrella A, Marsili L, Fossi CM, Leonzio C, et al. Sometimes sperm whales (*Physeter macrocephalus*) cannot find their way back to the high seas: a multidisciplinary study on a mass stranding. *PLoS One*. 2011;6:e19417. <http://dx.doi.org/10.1371/journal.pone.0019417>
- Centelleghè C, Beffagna G, Zanetti R, Zappulli V, Di Guardo G, Mazzariol S. Molecular analysis of dolphin morbillivirus: a new sensitive detection method based on nested RT-PCR. *J Virol Methods*. 2016;235:85–91. <http://dx.doi.org/10.1016/j.jviromet.2016.05.005>
- Van Bresselem MF, Duignan PJ, Banyard A, Barbieri M, Colegrove KM, De Guise S, et al. Cetacean morbillivirus: current knowledge and future directions. *Viruses*. 2014;6:5145–81. <http://dx.doi.org/10.3390/v6125145>
- Stephens N, Duignan PJ, Wang J, Bingham J, Finn H, Bejder L, et al. Cetacean morbillivirus in coastal Indo-Pacific bottlenose dolphins, Western Australia. *Emerg Infect Dis*. 2014;20:666–70. <http://dx.doi.org/10.3201/eid2004.131714>
- de Swart RL, Ludlow M, de Witte L, Yanagi Y, van Amerongen G, McQuaid S, et al. Predominant infection of CD150<sup>+</sup> lymphocytes and dendritic cells during measles virus infection of macaques. *PLoS Pathog*. 2007;3:e178. <http://dx.doi.org/10.1371/journal.ppat.0030178>
- de Vries RD, Mesman AW, Geijtenbeek TB, Duprex WP, de Swart RL. The pathogenesis of measles. *Curr Opin Virol*. 2012;2:248–55. <http://dx.doi.org/10.1016/j.coviro.2012.03.005>
- Stein VM, Schreiner NM, Moore PF, Vandeveld M, Zurbriggen A, Tipold A. Immunophenotypical characterization of monocytes in canine distemper virus infection. *Vet Microbiol*. 2008;131:237–46. <http://dx.doi.org/10.1016/j.vetmic.2008.03.009>
- West KL, Levine G, Jacob J, Jensen B, Sanchez S, Colegrove K, et al. Coinfection and vertical transmission of *Brucella* and *Morbillivirus* in a neonatal sperm whale (*Physeter macrocephalus*) in Hawaii, USA. *J Wildl Dis*. 2015;51:227–32. <http://dx.doi.org/10.7589/2014-04-092>
- Squadrone S, Chiaravalle E, Gavinelli S, Monaco G, Rizzi M, Abete MC. Analysis of mercury and methylmercury concentrations, and selenium:mercury molar ratios for a toxicological assessment of sperm whales (*Physeter macrocephalus*) in the most recent stranding event along the Adriatic coast (Southern Italy, Mediterranean Sea). *Chemosphere*. 2015;138:633–41. <http://dx.doi.org/10.1016/j.chemosphere.2015.07.047>
- Mazzariol S, Marsili L, Di Guardo G. Cetacean mass strandings and multidisciplinary work. *Chemosphere*. 2016;148:32–3. <http://dx.doi.org/10.1016/j.chemosphere.2016.01.026>

Address for correspondence: Dr. Sandro Mazzariol, Department of Comparative Biomedicine and Food Science, University of Padua, Viale dell'Università 16, 35020 Legnaro (PD), Italy; email: sandro.mazzariol@unipd.it

## Hepatitis E Virus Infection after Platelet Transfusion in an Immunocompetent Trauma Patient

Emmanuelle Loyrion, Thibaut Trouve-Buisson, Patricia Pouzol, Sylvie Larrat, Thomas Decaens, Jean-Francois Payen

Author affiliations: Centre Hospitalier Universitaire Grenoble Alpes, Grenoble, France (E. Loyrion, T. Trouve-Buisson, P. Pouzol, S. Larrat, T. Decaens, J.-F. Payen); Institut Albert Bonniot, Grenoble (T. Decaens); Universités Grenoble Alpes, Grenoble (T. Decaens, J.-P. Payen); Grenoble Institut des Neurosciences (GIN), Grenoble (J.-F. Payen)

DOI: <http://dx.doi.org/10.3201/eid2301.160923>

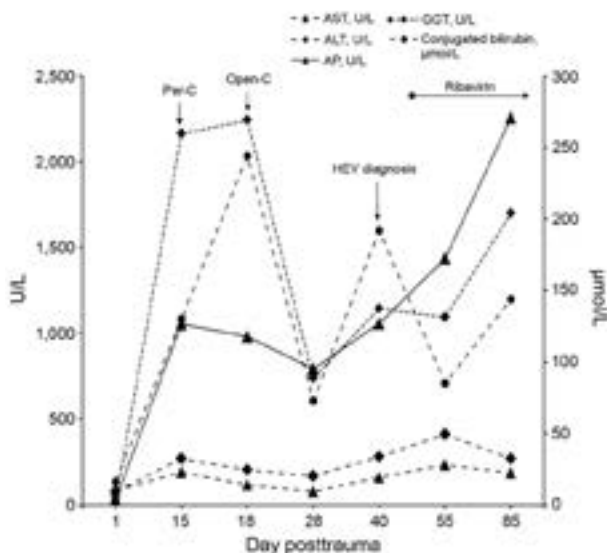
Hepatitis E virus (HEV) infection causes acute liver disease, but severe infections are rare in immunocompetent patients. We describe a case of HEV infection in a previously healthy male trauma patient in France who received massive transfusions. Genotyping confirmed HEV in a transfused platelet pool and the donor.

In developed countries, hepatitis E virus (HEV) infection usually results from consumption of contaminated meat or water and causes acute liver disease. Hepatitis E illness is usually self-limiting, and severe, prolonged infections are unusual except in immunocompromised patients. We describe HEV infection in a previously healthy man in France who received massive transfusions of blood, plasma, and platelets after a traumatic skiing accident.

At hospital admission, the patient was in hemorrhagic shock caused by severe blunt splenic injury. He underwent an immediate splenectomy with massive transfusion: 9 packed red blood cells units, 7 fresh frozen plasma units, and 1 whole blood platelet pool. Because of hemopneumothorax, multiple rib fractures, and pulmonary contusions, severe acute respiratory distress syndrome developed, and the patient was treated with venovenous extracorporeal membrane oxygenation for 3 days. The patient received another whole blood platelet pool transfusion at day 5 posttrauma and was treated with renal replacement therapy for 6 weeks.

At day 15 posttrauma, the patient had icterus, and liver blood tests revealed cholestasis; ultrasound findings showed acalculous cholecystitis. Because bile drainage via percutaneous cholecystectomy was insufficient and led to septic shock (day 18), the patient underwent open cholecystectomy. The diagnosis of ulcerated cholecystitis was confirmed by histologic examination; *Enterococcus faecium* was isolated from blood and bile samples. Cholestasis, icterus, and cytotoxicity gradually resolved over the next week postoperatively; however, liver blood test results did not return to normal (Figure). Histological examination of the liver tissue from the biopsy performed during cholecystectomy gave normal results, and there was no evidence of drug-induced toxicity.

At day 40, liver blood tests indicated a renewed increase in cholestasis and cytotoxicity (Figure). Meanwhile, the patient's clinical condition had improved, renal function had recovered, and the tracheal tube was removed. Ultrasound examination of the abdomen showed normal findings. Viral serologic tests were negative for Epstein-Barr virus, herpes simplex virus, HIV, and hepatitis A, B, and C viruses. However, reverse transcription PCR testing revealed HEV positivity, with HEV viremia reaching  $1.8 \times 10^5$  copies/mL (online Technical Appendix Table, <http://wwwnc.cdc.gov/EID/article/23/1/16-0923-Techapp1.pdf>). Serologic tests for HEV IgM (ASSURE HEV IgM Rapid Test; MP Biomedicals, Singapore) and IgG (HEV IgG ELISA; Wantai, Coutaboeuf, France) were negative at that time, but a blood sample taken on day 75 posttrauma showed HEV IgM.



**Figure.** Time course of liver blood test results from a trauma patient in France who was transfused with an HEV-contaminated blood platelet pool on day 5 posttrauma. ALT, alanine aminotransferase; AP, alkaline phosphatase; AST, aspartate aminotransferase; GGT, gamma glutamyl transferase; HEV, hepatitis E virus; open-C, open cholecystectomy; per-C, percutaneous cholecystectomy.