

Theatre Sheridan Presents

BOLD STROKES

Independent Student Productions

APRIL 16 – 19, 2003

The Vagina Monologues (Excerpts)

Writer's Block

The Great Gatsby: The Musical

APRIL 23 – 26, 2003

Cry for Rain

Scooby-Doo and the Sequined Sceptre

Flamingo at the 24-Hour Bingo

Blue Hour

Creative supervision

by

Greg Peterson

Lighting coordination

by

Bill Penner & Brett
Davidson

Sound designed by

Nick Vuckovic

TECHNICAL CREW

Production Stage ManagerMarie Fewer
 Stage ManagerChristine Tetlock
 Audio OperatorDanny O’Kane
 LX Board OperatorLaura Gross
 LX Coordinator/Crew ChiefBrett Davidson
 Head ElectricianBrett Davidson
 Running CrewAce Piton

TECHNICAL STAFF FOR THEATRE SHERIDAN

Carpentry AssistantRyan Beale
 Wardrobe AssistantTracy Beach
 Props BuilderBrian Barlow

THE VAGINA MONOLOGUES

Written by
Eve Ensler

Adapted & Directed by
Virginia Cowan

Assistant Director
Phedra L'Abbe

Featuring:
Veronica Bachiu
Alyssa Becker
Julie Burns
Virginia Cowan
Andrea Dlouhy
Ioana Hasapis
Sarah Blair Irwin
Heather McGuigan
Sarah Sheps

WRITER'S BLOCK

Written & Directed by
Brock Burford

Featuring:
Brock Burford
Julie Burns
Virginia Cowan
Tom Delbello
Andrea Dlouhy
Dan Falk
Spencer Hari
Michelle M. Kaye
Jordan L'Abbe
Tetiana Ostapowych
Jean-Francois Poulin
Sheena Turcotte
Scott Turner

THE GREAT GATSBY

Written by
Heidi Ford

Music by
Jean-Francois Poulin

Directed by
Heidi Ford & Jean-Francois Poulin

Gatsby	Patrick Cook
Nick	Matthew Boden
Daisy	Michelle M. Kaye
Jordan.....	Sheena Turcotte
Tom.....	Tom Delbello
Myrtle	Veronica Bachiu
Catherine	Julie Burns
Wilson/Wolfsheim	Dan Falk
Mr. McKee	Scott Turner
Mrs. McKee	Melody Lemon
Twin	Sarah Blair Irwin
Twin	Sarah Shep
Maid	Alyssa Becker
Maid	Rochelle Kives
Butler.....	Jordan L'Abbe
Klipspringer.....	Brock Burford

April 23 – 26

CRY FOR RAIN

Written and Directed by Tom Delbello

DeanMatthew Boden
Randy.....Dan Falk
Anne.....Trish Lackey
SarahChristina Pagel
Marshall.....Jean-Francois Poulin
ComposerJohn Connolly

SCOOBY-DOO & THE SEQUINED SPECTER

Written & Directed by Scott Turner

ShaggyBrock Burford
FredTom Delbello
VelmaAndrea Dlouhy
DaphneDaphne Moens
Mrs. CrabblyVirginia Cowan

FLAMINGO AT THE 24-HOUR BINGO

Directed by Matt Boden
Book Tetiana Ostapowych

Book and Lyrics by Daniel Falk
Music by John Connolly

FemaleAlyssa Becker
GussDan Falk
Male.....Spencer Hari
Female.....Rochelle Kives
TashAnna MacLean
Female.....Sarah Sheps
MaleScott Turner

THE BLUE HOUR

Adapted from the works of David Mamet
Directed by Jordan L'Abbe

RichardBrock Burford
Valerie.....Julie Burns
Greg.....Patrick Cook
JoeSpencer Hari
ManJordan L'Abbe
RozHeather McGuigan
DonnaDaphne Moens
PattiTetiana Ostapowych

THE CAST



Veronica Bachiu



Alyssa Becker



Matthew Boden



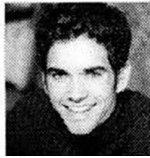
Brock Burford



Julie Burns



John Connolly



Patrick Cook



Virginia Cowan



Andrea Dlouhy



Tom Delbello



Dan Falk



Ioana Hasapis



Sarah Blair
Irwin



Michelle M.
Kaye



Jordan L'Abbe



Trish Lackey



Melody Lemon



Heather
McGuigan



Daphne Moens



Christina Pagel



Jean-Francois
Poulin



Sarah Sheps



Sheena Turcotte



Scott Turner

Photo not available

Spencer Hari
Rochelle Kives

Anna MacLean
Tetiana Ostapowych

Theatre Sheridan

Bold Strokes

A Message To Our Patrons

Welcome to Theatre Sheridan's 'Bold Strokes' Presentations. We proudly consider this very special project to be one of the most important developments in our production planning. In an effort to provide our students with a truly creative outlet and to further encourage their independence as artists in the entertainment industry, this year Theatre Sheridan is sponsoring a series of student-driven productions. Next year we will sponsor the workshop of a major new full-scale musical. It is our sincere hope that this two-year alternating cycle will continue from now on in our Studio Theatre.

By giving our students the chance to write, compose, stage, musically direct, design and produce their own work, and by providing them with the opportunity to create roles in new musicals, we hope to foster a generation of new artists that will drive what happens in the theatres across our country. Thank you for being a part of this groundbreaking new series.

From April 16th to 19th, three mini-productions will be presented each evening:

- The Vagina Monologues – selections from Eve Ensler's powerful feminist piece compiled and directed by graduating student Virginia Cowan, assisted by Phédra L'Abbé, another graduating student
(Approximately 35 minutes)
- The Writer's Block – a one-act sketch-comedy written and directed by graduating student Brock Burford
(Approximately 40 minutes)
- a reading of the First Act of The Great Gatsby – a new musical version of the F. Scott Fitzgerald classic, book and lyrics by Heidi Ford and music by graduating student Jean-François Poulin, directed by the authors
(Approximately 1 hour and 10 minutes)

From April 23rd to 26th, four mini-productions will be presented each evening:

- Cry For Rain – a new one-act musical, book and lyrics by 2nd Year student Dan Falk and music by 1st Year student John Connolly, directed by Tom Delbello and musically directed by Andrea Dlouhy, both 2nd Year students
(Approximately 40 minutes)
- Flamingo At the Twenty-Four Hour Bingo – a powerful new one-act play written and directed by 2nd Year student Matthew Boden with choreography by Tetiana Ostapowych, another 2nd Year student
(Approximately 35 minutes)
- Scooby-Doo and the Sequined Spectre – a mini-musical spoof written, directed and choreographed by 2nd Year student Scott Turner
(Approximately 35 minutes)
- The Blue Hour – a compilation of scenes and monologues by celebrated American playwright David Mamet, cleverly linked together and directed by graduating student Jordan L'Abbé
(Approximately 40 minutes)

Please Note: A ten-minute intermission will come between each mini-production.

It is important for us to hear your comments!

Take a moment to write down your reactions and suggestions on the reverse side of this handout. Please hand your comments to one of our ushers on your way out the door at the end of the evening.