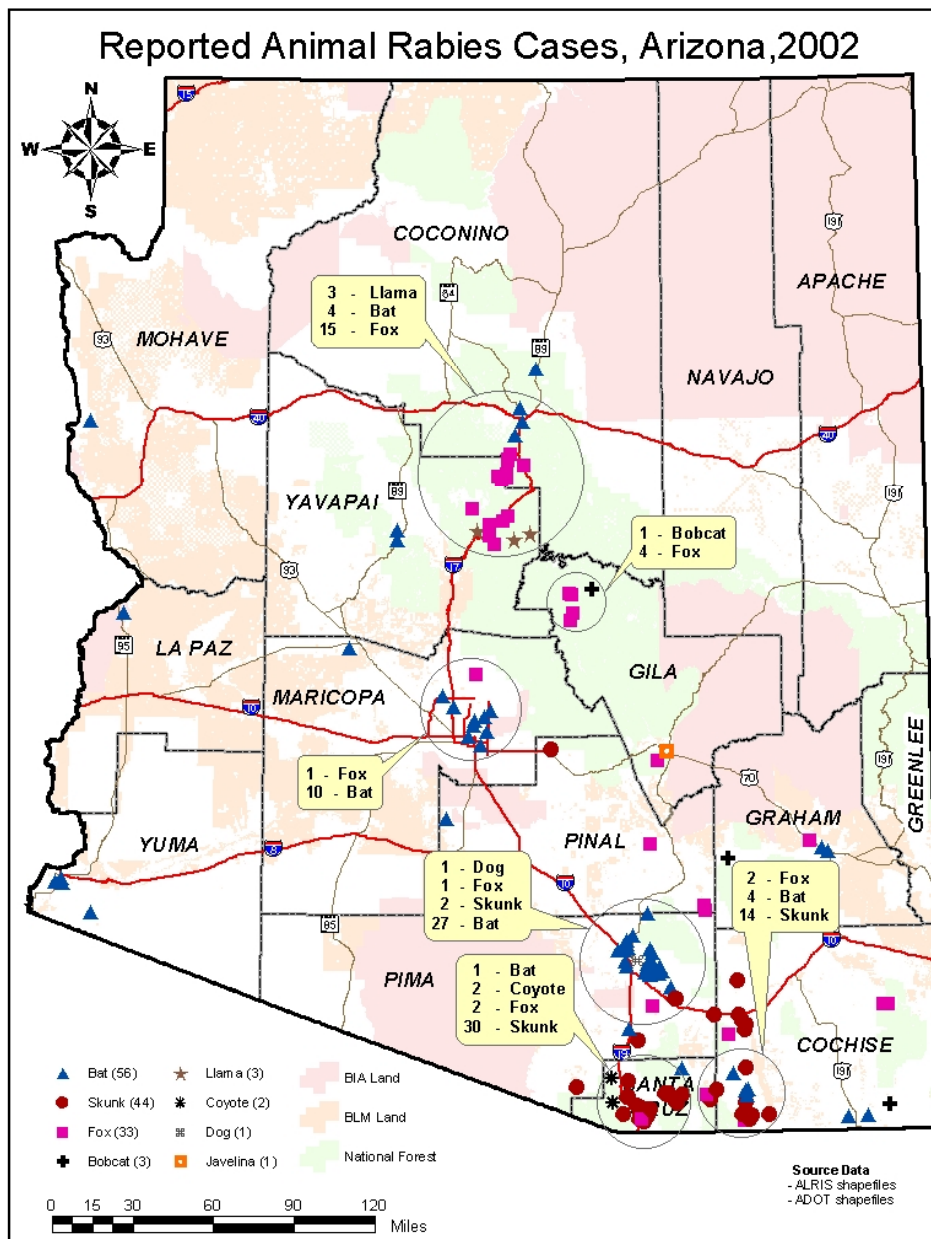


MANUAL FOR RABIES CONTROL AND BITE MANAGEMENT



Vector-borne and Zoonotic Disease Section
Office of Infectious Disease Services
Arizona Department of Health Services
(602) 364-4562

Table of Contents

Definitions	4
Introduction	5
Biology of rabies	6,7
(Characteristics, transmission, pathogenesis, incubation periods, clinical signs)	
Rabies in Domestic Animals	
Dogs and Cats	8-10
Recommend Rabies Vaccination Schedule	8
Quarantine/Observation of Dogs & Cats that Have Bitten or Exposed a Person	9
Protocol for Dogs & Cats Exposed to a Potentially Rabid Animal	10
Ferrets	11
Livestock	12
Rodents	13
Exotic animals	
Non-Human Primates	13
Canine/wolf hybrids	14
Wildlife	15
Bats	16,17
Skunks, foxes, coyote, bobcats, ringtails, raccoons	17,18
Human exposure	19
Human <u>pre-exposure</u> immunization & recommendations for travelers	20
Human <u>post-exposure</u> treatment	21
Prevention and Control, risk reduction	23
Laboratory testing: Preparation and submission of specimens	24
Attachments:	
Arizona Communicable Disease Rules pertaining to rabies	26
Arizona Revised Statutes pertaining to rabies	31
Wolf Hybrid vaccination release form (sample)	43
Animal Bite or Exposure Report Form	44
Algorithm: Protocol for Human Exposure to Rabid or Suspect Rabid Animals	45
Post-Exposure Prophylaxis Vaccination Reporting Form	46

References:

1. Compendium of Animal Rabies Prevention and Control, 2003
National Association of State Public Health Veterinarians
2. Human Rabies Prevention- United States, 1999; Recommendations of the Advisory Committee on Immunization Practices (ACIP)
US Department of Health and Human Services, Centers for Disease Control and Prevention

DEFINITIONS

Confirmed Rabies Case:

An animal which has tested positive for rabies virus at the Arizona State Laboratory, a State Laboratory in another state, a university laboratory, or the Centers for Disease Control and Prevention Rabies Laboratory.

Positive rabies test = rabies infection confirmed

Negative rabies test = did not show evidence of rabies virus in the brain tissue when tested

Euthanasia/Euthanize: Humane killing of an animal.

Rabies Exposures:

1) Bite - wound from a tooth that penetrates the skin

2) Non-bite contact - getting saliva, brain tissue, or cerebral spinal fluid from a potentially rabid animal into an open wound or in the eyes, nose, or mouth.

Incubation Period:

The time between exposure to a disease (such as rabies), and the development of clinical signs or symptoms. The incubation period of rabies is longer and more variable among different species and individuals than in other viral diseases. The incubation period in rabies may depend on the virus variant, susceptibility of the exposed species, the location and amount of inoculum, and post exposure management. The incubation period for rabies in domesticated animals is the basis for the 45-day (for vaccinated domestic animals) and 180 day (for unvaccinated animals) quarantine times after a pet or livestock animal has been exposed to a potentially rabid animal (see Communicable Disease Rules Article 5 R9-6-501).

Rabies Virus "Shedding Period" (infectious stage):

The rabies viral shedding period is the time that an animal excretes rabies virus in its saliva. During this period, an animal can transmit rabies to another animal. Viral shedding tends to occur only during the late stage of the disease, after rabies has affected the brain (just before death).

Shedding Time and Quarantine/Observation: The maximum infectious stage of rabies in dogs and cats in the United States is ten days. If a dog or cat remains healthy for 10 days after biting a person, it is safe to assume that rabies was not transmitted. This quarantine/observation period is extended to 14 days for ferrets, and dogs and cats when the bite occurs in a country with endemic canine rabies. Rabies shedding periods in wild animals are not known, and they should be tested for rabies rather than quarantined if they expose a person.

Quarantine: Confinement of an animal to a limited, enclosed area in order to restrict exposure of that animal to other animals and to humans, and to facilitate observation of the animal for signs of rabies.

INTRODUCTION

This manual is intended for use by veterinarians, animal control personnel, wildlife biologists, wildlife rehabilitators, and local health departments for rabies control purposes. These recommendations are based on the Compendium of Animal Rabies Prevention and Control; Human Rabies Prevention- United States, 1999 (recommendations of the Advisory Committee on Immunization Practices); and Arizona's laws (Arizona Revised Statutes - Article 6 sections 11-1001 through 11-1027, and Arizona Administrative Code - Communicable Disease Rules R9-6-501-503).

Rabies in Arizona - Epidemiology:

The number of confirmed cases of rabies in animals in Arizona has increased dramatically over the past few years. The most commonly infected species in Arizona include bats, skunks, and foxes. Occasionally coyotes, bobcats, ringtails, javelina and domestic livestock or pets are infected as a result of interaction with the most commonly infected wildlife species.

Table 1. Confirmed Positive Rabies Cases by Year and Species in Arizona.

	1990	1991	1992	1993	1994	1995	1996	1997	1998	1999	2000	2001	2002
Bat	22	32	31	37	30	43	29	45	43	48	65	56	56
Skunk	9	23	41	13	21	9	7	5	3	11	17	59	44
Fox	0	1	0	5	3	2	0	0	0	19	15	6	33
Bobcat	0	0	2	3	0	0	0	0	1	0	0	2	3
Coyote	0	0	0	0	2	1	0	0	0	1	1	4	2
Horse	0	0	0	1	0	1	0	1	1	0	0	0	0
Cat/Dog	3(cat)	0	0	0	0	0	0	1(dog)	0	0	1(dog)	0	1(dog)
Other	0	0	0	1*	0	1 ⁺	0	0	0	2 ⁺	1 [~]	1 [~]	4 [°]
Total	34	56	74	60	56	57	36	52	48	81	101	129	143

* =ringtail ⁺=bovine [~]=badger [°]=1 javelina and 3 llamas

Recorded cases of rabies in wild animals throughout the US have increased dramatically over the past twenty years. For more than three decades, wildlife has been the most important potential source of rabies infection in the U.S. for both humans and domestic animals, representing more than 90% of confirmed rabies cases in animals. During 2002, Arizona recorded the highest number of confirmed animal rabies cases for any year.

Over the past 50 years, the incidence of human rabies cases has declined markedly in the United States, paralleling the decrease of rabies in domesticated animals. Widespread vaccination of pet dogs and cats, animal control efforts to reduce stray animals, and effective rabies post-exposure prophylaxis for humans are largely responsible for that progress.

Prevention of human and pet rabies depends on the following:

- Vaccinating dogs, cats, horses and ferrets, stray animal control, and leash law enforcement.
- Promoting educational messages to the public to reduce exposures to wild and stray animals.
- Providing exposed persons with prompt cleansing of wounds and appropriate post exposure prophylaxis.

Confirmed Animal Rabies Cases in Arizona's Animal Population (1980-2002).

Highest risk: bat, skunk, fox Frequent: bobcat, coyote Occasional: dog, livestock, javelina

BIOLOGY OF RABIES

Characteristics: The rabies virus (*Family Rhabdoviridae, genus Lyssavirus*) is fragile and easily inactivated by desiccation, ultra-violet radiation, and detergents. It is rapidly destroyed by temperatures above 50 Centigrade and destroyed within a few hours at room temperature. However, the rabies virus may persist for years when frozen.

Transmission: Rabies may be transmitted when infected saliva, central nervous system tissue, or cerebral spinal fluid penetrates the skin or mucosa of a susceptible mammal. Rabies is usually transmitted by bite wounds, but may involve saliva contact with mucous membranes or a fresh break in the skin. Rabies is not transmitted by contact with blood, urine, feces, petting or touching fur, or being sprayed by a skunk.

Pathogenesis: There is still much to be learned about the pathogenesis of rabies in mammals, particularly with respect to species variations in the incubation period, the natural cycles in wildlife, and salivary shedding (infectious) periods. After inoculation, the rabies virus progresses from the subcutaneous tissue or muscle into peripheral nerves. The virus then migrates along nerves to the spinal cord and brain. The victim exhibits behavioral changes and clinical signs when the virus reaches the brain. At this point the incubation period is over and the clinical period begins. The virus continues to spread in the infected host, via the nerves, to the salivary glands and in the final phase, rabies may be transmitted to other mammals through infectious saliva.

The infected animal usually dies within a few days after onset of clinical signs. Factors that may contribute to the transmission, incubation period and development or prevention of rabies infection include: the amount of viral inoculum (amount of rabies virus); the anatomic location of the bite or saliva exposure; and post exposure wound management (washing the wound, rabies immune globulin and vaccination). Head and neck wounds as well as wounds in highly innervated areas such as fingers generally have shorter incubation periods due to the proximity of the viral inoculation to nerve tissue.

Table 2a. Incubation Period and Duration of Disease in Dogs and Cats*

1. Incubation Period - Average 2-9 weeks; range 9 days - 8.5 months (not >6 months in U.S.)
2. Prodromal/Initial stage - 1-3 days
3. Excitation (furious) stage - average 1-7 days. Some animals do not exhibit this stage.
4. Paralytic stage - 1-4 days duration

***If a dog or cat has not shown any signs of abnormality on the tenth day after inflicting a bite, it is safe to assume that the animal was not shedding virus in it's saliva at the time of the bite.**

Table 2b. Incubation Period and Duration of Disease in Other Species

<u>Species</u>	<u>INCUBATION PERIOD</u>	<u>DURATION OF CLINICAL DISEASE</u>
Horses /mules	average 3-14 wks, range< six months	2-8 days
Cattle	average 2-15 weeks range< 6 months	usually 1-6 days (rarely as long as 14 days)
Sheep /goats	2-17 weeks	5-7 days
Wild /exotic animals	unknown	unknown
Humans	avg. 3-16 weeks, range 2 weeks- 6 years	2-21 days

CLINICAL SIGNS OF RABIES IN ANIMALS:

Signs of rabies in individual animals, even of the same species can vary widely. They can be either subtle or obvious and occasionally an animal will die suddenly after exhibiting few or no symptoms. Signs of rabies include:

- paralysis, stupor
- loss of appetite
- unusual vocalizations
- biting at itself or others
- salivation (may appear excessive)
- fever
- behavior changes such as nocturnal animals becoming active during daylight hours
- bats found on the ground or flying in daylight
- temperament change
 - confusion, agitation, restlessness
- trouble walking (staggering, unsteadiness)
- tremors, convulsions
- unprovoked aggression.

OTHER DISEASES/ CONDITIONS WHICH MAY RESEMBLE RABIES

Many diseases and conditions occur in both wild and domesticated species that may mimic rabies. Some of the more common diseases/conditions include canine distemper, toxicoses (poisoning), listeriosis, herpes virus infection, brain abscess or tumors, encephalitides of other etiologies, tetanus, head or spinal cord trauma, neuropathies, and localized lesions and obstructions.

If there is uncertainty about the cause of death of an animal which showed acute, progressive neurologic signs compatible with rabies, and there is a known or suspected human or animal exposure, the dead animal should be tested for rabies. Wild animals that are sick or have recently died should be submitted for testing, even without any known human exposure.

RABIES IN DOMESTIC ANIMALS

Pets can be exposed to rabies through wildlife encounters. Even urban pets can be exposed, since rabid bats are found throughout Arizona. Currently, cats are more frequently infected with rabies than any other domestic animal in the United States. The documented number of cases of rabies in cats in Arizona is small, however cats are more likely than other pets to roam and hunt, and therefore exposed to wildlife. **Rabies vaccination of cats is strongly recommended.**

Dog owners are required by Arizona Revised Statutes to have their dogs licensed and vaccinated for rabies and licensed. (Refer to Appendix A. ARS Article 6. 11-1010.) In Arizona, dog bites are followed up by animal control agencies, leading to more testing of sick dogs than cats. Between 1995 and May 2002, three unvaccinated dogs have been diagnosed with rabies (2 Gila County, 1 Pima County).

Recommended Dog and Cat Rabies Vaccine Schedule*

*Consult the current Compendium of Animal Rabies Control for the most recent animal vaccination recommendations. Per the 2003 Compendium:

Dogs and cats should be initially immunized between 3[‡] and 4 months of age, re-immunized at 12 months after the first vaccination, with booster needed every three years if they are vaccinated with a licensed rabies vaccine and the label indicates 3 years duration of immunity. If an animal is vaccinated with a one-year rabies vaccine (label indicates 1 year duration of immunity), then a booster is needed annually. In order to improve rabies vaccination coverage, use of 3-year rabies vaccines is encouraged for dogs and cats. However, there are no laboratory or epidemiologic data to support the annual or biennial administration of 3-year vaccines following the initial series.

‡Three months is considered to be minimum age for primary vaccination. As of September 2003, Arizona Revised Statute 11-1012 was changed so that dogs at large over the age of three months (instead of four months) must be licensed, and thus vaccinated for rabies.

Ferrets, horses, and cattle should be vaccinated annually against rabies. The first vaccination of ferrets is recommended at 3 to 4 months of age.

Any animal that has an unknown, undocumented or questionable vaccination history should be vaccinated immediately and then again in 12 months.

* For information on vaccine names, companies, schedules, and dosages available for species for which a vaccine has been approved (dogs, cats, cattle, horses, ferrets and sheep), please refer to the current Compendium of Animal Rabies Control and Prevention.

Assessing Current Vaccination Status:

An animal is considered currently immunized for rabies if the following criteria are met:

- a) The animal was vaccinated with a product that was approved for use in the species
- b) The vaccine was listed in the current Compendium
- c) A licensed veterinarian administered the vaccine, and the licensed veterinarian administering the vaccine signed a certificate.
- d) Vaccines were given at the recommended schedule
- e) It is at least 30 days past administration of the first rabies immunization

Quarantine/Observation of Dogs and Cats that Have Bitten or Exposed a Person:

See Appendix A, A.R.S. Article 6. 11-1014

Any dog or cat (vaccinated or unvaccinated) that bites a person must be confined/observed for a ten-day observation. If symptoms of rabies develop or the animal dies during the observation period, the animal should be tested for rabies. A veterinarian should evaluate the animal at the first sign of illness.

Observe the animal for 10 days. The quarantine period starts on the day of the bite or exposure.

- a) If the dog or cat is currently vaccinated against rabies, a home quarantine is permitted at the discretion of the animal control official. Owners should be given clear instructions including the clinical signs of rabies to be reported.
- b) If the animal is not currently vaccinated or has an unknown vaccination status, the quarantine may be done in an animal control facility or veterinary clinic.

NOTE: Appropriate quarantine times have been established for dog, cats, and ferrets. However, other animals (except livestock and rodents) that expose humans to potential rabies infections may need to be tested for rabies to determine if post-exposure treatment for the victim is warranted.

Observe the animal while under quarantine for signs of rabies.

- a) If the animal **does not die or develop clinical signs of rabies infection** during the quarantine period, the dog/cat did not have rabies virus in its saliva at the time of the exposure, and there is no further risk to the person. The person should not receive post-exposure treatment.
- b) If an animal **develops signs of rabies infection** while under quarantine, humanely euthanize the animal and submit the head for testing.
- c) If an animal **dies during the 10-day quarantine**, submit the head for rabies testing.
- d) If the animal tests positive for rabies infection, start post-exposure prophylaxis for the exposed person(s) immediately and notify animal control or health department officials.

Protocol for Dogs and Cats that Have Been Exposed to a Potentially Rabid Animal

(Refer to Arizona Administrative Code, Communicable Disease Rules R9-6-501)

When a domestic animal has direct contact with a rabid or potentially rabid wild animal, it is considered to have had a potential exposure to rabies. It is very important to capture and submit the wild animal for rabies testing if possible. Wild animals that are not available for laboratory testing should be presumed rabid. **Domestic animals that bite other domestic animals are not usually considered as rabies suspects unless they are exhibiting signs compatible with the disease.**

- Determine whether the dog or cat is currently vaccinated against rabies (page 7).
- Find out if the wild animal to which the dog/cat was exposed is available for rabies testing.
- If the wild animal tests negative for rabies, there is no need to quarantine the exposed pet.
- If the wild animal is unavailable for testing, presume the wild animal is positive.
- If the wild animal is tests positive for rabies (or presumed positive), proceed as follows:

If the dog/cat is **currently vaccinated** against rabies:

1. Notify local animal control.
2. Immediately take the animal to a veterinarian for a booster rabies vaccination.
3. Confine the dog or cat under the owners control and close observation for 45 days. The animal should be kept in a building, pen, or escape proof enclosure. The animal should only be removed from confinement on a leash and under supervision of a responsible adult. (Some town or county ordinances may be more restrictive than state law and not allow home quarantine.)
4. At the first sign of illness or behavioral change, the animal should be taken to a veterinarian, and the health department and animal control office should be contacted IMMEDIATELY.

If the exposed dog/cat has **never been vaccinated against rabies**:

1. Notify the local animal control office.
2. Consider immediate humane euthanasia OR
3. Animal control will quarantine the animal for 180 days (6 months) in an approved facility run by either a veterinarian or an animal shelter.
 - The owner is responsible for payment of all expenses related to the quarantine.
 - A veterinarian should vaccinate the animal against rabies near the 150th day of quarantine. The quarantine is completed 180 days after the exposure.

Animals that have been vaccinated in the past but are overdue for rabies vaccines should be handled on a case-by-case basis, upon consultation with the local animal control agency and/or the State Public Health Veterinarian.

FERRETS

Ferrets are in the same family as skunks, and they are also susceptible to rabies. During the period between 1958 and 1996, more than 22 ferrets were confirmed with rabies infections in the U.S. Common clinical signs of rabies in ferrets include: hyper or hypothermia, ataxia (staggering), lack of appetite, paraparesis (weakness in hind limbs), paralysis, lethargy. Less common signs include vocalization and aggression.

There is a licensed rabies vaccine for ferrets. Ferrets should be vaccinated annually. A booster vaccine should be administered immediately if a vaccinated ferret is exposed to a rabid or potentially rabid animal.

If a ferret bites a human, regardless of its rabies vaccine status, it should be quarantined and observed for signs of rabies or sudden death for 14 days (Arizona Revised Statute 11-1014 B). If signs of rabies develop, or the ferret dies during the quarantine period, the ferret should be tested for rabies.

If an unvaccinated ferret is exposed to a rabid or suspect rabid animal:

- Submit the suspected rabid animal for testing:
 - * If results are negative, no further action is needed.
 - * If results are positive, or the animal is not available for testing:
 - a) euthanize the ferret **or**
 - b) Place the ferret under 180-day quarantine in a veterinary hospital or animal control facility at the owner's expense.

If a currently vaccinated ferret is exposed to a rabid or suspect rabid animal:

- Submit the rabid animal for testing if available:
 - * If results are negative- no further action is needed.
 - * If results are positive **or** the rabid/suspect rabid animal is not available for testing:
 - Revaccinate the ferret immediately and place it under quarantine for 45 days.

NOTE: A ferret is considered currently vaccinated if it has received a rabies vaccination within the prior 12 months and the vaccine used was approved for use in ferrets.

LIVESTOCK

Rabies vaccines are available for cattle, horses, and sheep (see Compendium). There are no rabies vaccines currently licensed for use in swine, goats, camelids (llamas, alpacas), bison, red deer, fallow deer, elk or exotic species of livestock, however rabies vaccines may be used off-label by licensed veterinarians.

- A veterinarian and livestock owner should decide on the whether rabies vaccinations are warranted in a herd or in valuable individual animals. In Arizona, livestock maintained in areas with epizootic rabies activity in foxes or skunks should be considered for vaccination.
- Horses: Occasional cases of rabies in horses occur in Arizona. Recent cases include one horse in Cochise county-1993, one in Yavapai county-1995 (fox variant), one in Pinal county-1997 (fox variant), and one in Maricopa-1998 (skunk variant).
- Cattle: Two steers developed rabies in 1999. Both had recently been imported from Mexico, and they were infected with vampire bat rabies virus.
- Llamas: Three llamas on one farm in Yavapai county developed rabies in 2002. They were housed in an area with active wildlife corridors and were infected with the Arizona gray fox variant of rabies virus.
- Livestock with behavioral/ neurologic abnormalities that are not explained by an identified disease should be considered for rabies testing, especially if human or animal exposure has occurred.
- Livestock maintained on rural pastures or grazing land may contract rabies from exposure to wild animals.
- Livestock that have recently been shipped to Arizona from out of state may be incubating rabies, and should be tested if unexplained neurologic disease develops.
- A 14-day observation period is required when livestock bite or expose a person. If clinical signs develop or the animal dies during the 14-day observation period, the animal should be euthanized and submitted for rabies testing.

**Reports of rabies or suspect rabies infection in livestock, and the quarantine of livestock that bite humans, are handled by the Arizona State Veterinarian's office in Phoenix; telephone (602) 542-4293.

RODENTS

Rodents in the US: Forty-three groundhogs and beavers, one squirrel and one rabbit tested positive for rabies in 1999. All of these animals were in the northeastern United States and were associated with the ongoing raccoon rabies epizootic.

Rodents and rabbits in Arizona are at extremely low risk for rabies infection. There has never been a rodent in the state of Arizona that has tested positive for rabies. Rodents/rabbits should not be submitted for rabies testing unless there was human exposure and the rodent was exhibiting neurological signs. (See page 17 for guidelines on submission of wild rodents/rabbits.)

- 1) Domesticated rodents (i.e. guinea pigs, hamsters, gerbils, mice, and white rats) purchased from pet shops, raised in controlled captive breeding situations, and never exposed to carnivorous animals or bats do not pose risk of rabies infection.
- 2) Wild rodents in Arizona are at very low risk of rabies infection.
- 3) Quarantining rodents for rabies observation is unwarranted and rabies testing of wild rodents is offered only in limited circumstances. Call your local animal control agency or the Arizona Department of Health Services (602) 364-4562 with questions.
- 4) Bites to humans inflicted by rabbits, squirrels, chipmunks, rats, and mice, seldom if ever, call for rabies prophylaxis. All animal bites should be thoroughly cleaned and watched for infection. As with other puncture wounds, tetanus immunization may be warranted.

EXOTIC ANIMALS

Mink: Mink have contracted rabies in the U.S. There is no vaccine licensed for use in mink, and no quarantine time has been established.

Non-human Primates: At least sixteen cases of rabies in non-human primates have been confirmed in the United States. Of these, 2 are suspected to be the result of vaccination with a live attenuated rabies vaccine. Currently, there are no rabies vaccines licensed for use in non-human primates.

Primates may carry and transmit many diseases to humans (and vice versa). Macaque monkeys are carriers of a herpes virus that is often fatal in humans. All bites inflicted on people by non-human primates should be assessed by a physician and reported to local animal control agencies and the Arizona Game and Fish Department.

Other exotic mammals: There is no rabies vaccine licensed for use in other exotic mammals, and quarantine times have not been established.

Reptiles, amphibians, birds, and fish are not susceptible to natural rabies infection.

Canine/Wolf-Hybrids and Feline Hybrids

Offspring of any non-domesticated animal crossbred to a domestic animal are considered to be "wild animals," and should be managed as wild animals in the event of a bite to a human. As of May 2002, **there is no rabies vaccine approved for use in dog/wolf hybrids or in cat/wild cat hybrids**. Hybrids may be vaccinated with a vaccine approved for use in domestic dogs/cats although the efficacy in these animals has not been determined.

Note to veterinarians: The administration of canine rabies vaccines to wolf hybrids or feline hybrids is considered discretionary or off-label use. This practice is not discouraged in Arizona (other state and local laws vary). It is strongly suggested that veterinarians vaccinating wolf-hybrids obtain owner initials in the medical record or a signed release form from owners stating that they understand that the vaccine is not licensed for use in their animal, that it may not be effective if the animal is exposed to rabies, and that a hybrid pet will be considered to be an unvaccinated wild animal if it should bite a person. A sample wolf-hybrid release form is attached.

It is the owner's responsibility to prevent any situation where their hybrid may expose a person to its saliva. Studies have not been done on how long wolf hybrids may excrete virus in their saliva in the advanced stages of rabies. Therefore, quarantine periods for wolf hybrids after they have bitten a person, have not been established. Until more data are available, a wolf-hybrid should be handled the same as a wild animal in the event of a human exposure, regardless of its vaccination history.

If a wolf-hybrid bites a human (regardless of the hybrid's vaccination history):

- Humanely euthanize the hybrid and submit the head for rabies testing:
 - If the result is negative, no further action is required.
 - If the result is positive, start human post-exposure rabies vaccinations for the bite victim.
 - If the wolf-hybrid is not available for testing, consider post-exposure treatment for the bite victim.

If a wolf-hybrid is exposed to a possibly rabid animal:

- Submit the possibly rabid animal (if available) for rabies testing.
 - If the result is positive, immediately euthanize the hybrid.
 - If the result is negative, no further action is required.
 - If the other wild animal is not available for testing, it should be considered potentially rabid and the wolf hybrid should be euthanized immediately.

*Also, consult the current Compendium for the most current recommendations concerning wolf hybrids.

WILDLIFE

Bats, Skunks, Foxes, Coyote, Bobcats, Ringtails, Raccoons, Coatis.....

The public should be encouraged to respect and protect native wildlife. The message should include a warning to the public not to touch, feed, provoke, or attempt to help wildlife. Handling wild animals may lead to a potential rabies exposure, and the animal will have to be euthanized. The public should call the Arizona Game and Fish Department, rehabilitators or the local Animal Control Department with reports of wild animals that are injured or behaving strangely.

For purposes of rabies exposure assessments, wild animals that have not tested negative for rabies, must be considered as potentially infected with rabies. Since wild animals incubate and excrete rabies virus for unknown periods, they cannot be considered free of rabies even if purchased from a pet shop, acquired as a baby, or held for a long period of time.

If a wild mammal other than a rodent is submitted to a veterinary clinic or animal shelter, a thorough history of potential human and animal exposures should be taken before any decision is made about its' treatment. Rehabilitation should not be attempted on animals that have potentially exposed humans or other animals to rabies.

If a sick or injured wild animal is reported and there has not been any contact with another animal or person, the animal may be turned over to a rehabilitator. Sick and injured bats should not be rehabilitated in Arizona because of the high risk of rabies. If a sick or injured wild animal bites or exposes a person or a pet to its saliva (or brain tissue!), it is not appropriate to rehabilitate or quarantine it. These animals should be humanely killed and immediately tested for rabies.

If a wild animal (other than a rodent) bites or exposes a human:

- Euthanize the animal and submit it for rabies testing.
- If the animal is not available for testing, recommend post-exposure rabies prophylaxis for the bite victim.
- If the wild animal is, or may be, endangered, protected, threatened or rare, the Arizona Game and Fish Department and the Arizona Department of Health Services will consult with local officials on the situation. If it is a zoo animal, the zoo veterinarian will also be consulted.

If a wild animal (other than a rodent) bites or exposes a pet or livestock animal:

- Humanely sacrifice the wild animal and test it for rabies.
- If the wild animal is not available for testing, quarantine or euthanize the exposed animal (see chart).

Bats: In Arizona there are 28 species of bats. Some bats are migratory and some are year round inhabitants of the state. The percentage of bats in the wild that are infected with rabies is very low (less than 1%), but the infection rate is higher in sick and injured bats. In Arizona from 1993 through 2002, between 11% to 16% of the bats that were tested in the State Health Laboratory were positive for rabies. From 1992-2021, 451 bats tested positive for rabies in AZ.

The public should be discouraged from handling bats that are exhibiting abnormal behaviors. Animal control officers, Game and Fish officers, rehabilitators, and veterinarians should carefully assess each situation when deciding whether or not to submit a bat for testing. Whenever a member of the public finds a bat, a very thorough exposure history should be taken.

The possibility of rabies infection in bats should be considered in bats exhibiting the following:

- Grounded, unable to fly (frequently these are flapping around or laying on the ground)
- erratic behavior (flying around a person or pet during the day or crashing into objects)
- Anorexia (not eating)
- Partial or complete paralysis
- Death

Laboratory Testing: Bats should be submitted to the state laboratory for rabies testing immediately when:

- There has been direct contact with a human, or contact cannot be ruled out.
- Children have been playing with or near a bat.
- A bat is found in a room with a sleeping individual, a child, an individual under the influence of alcohol or drugs, or someone with sensory or mental impairment.
- A domestic animal has had contact or potential contact with a bat.
- A bat is exhibiting abnormal behavior, is sick, injured or recently dead.

Public Education: The most important message to disseminate to the public is to leave bats alone. Bats are not aggressive animals, and most exposures are preventable. Bats should not be maintained in or near human dwellings or schools. Consult pest control agencies that are licensed by the Arizona Game and Fish Department for exclusion techniques that will not harm the bats. Bats which are seen roosting naturally on buildings, trees, etc. and have not exposed a person or pet should be left alone. Bats that are hanging on buildings, bridges, or natural surfaces (trees, caves, eaves, etc), or flying in the evening should not be disturbed.

Capture: To safely capture a bat in a room, close the windows and doors, and turn on the lights. Wait for the bat to land. Wearing heavy gloves, cover the bat with a coffee can or container. Slide a piece of cardboard between the wall or floor and the can opening trapping the bat. Tape the cardboard tightly to the can. Immediately contact a local animal control or health official to arrange for rabies testing of the bat.

(Bats continued)

Exposure: If someone is bitten or exposed to a bat, wash the wound with soap and water, and seek medical assistance immediately. Refer to the Human Exposures section for rabies prophylaxis indications concerning bat exposures.

Skunks: Rabies is cyclic in skunk populations in southern Arizona. Although the average annual number of skunks confirmed with rabies statewide is usually less than 20, in epizootic years, more than 80 skunks have tested positive. From 1991-2001, 210 skunks tested positive for rabies. The most common areas in Arizona for rabies in skunks include Santa Cruz, Cochise, Pima and Pinal counties. In 2001, a very unusual outbreak of rabies in skunks was detected in Flagstaff. Skunk variants of rabies have been found in cats, badger, horses, and a cow.

Foxes: Arizona has a unique variant of rabies virus that is associated with the Arizona gray fox. Foxes are distributed throughout the state, and rabid foxes have been found in Santa Cruz, Cochise, Pima, Gila, Graham, Greenlee, Maricopa and Yavapai counties. The fox variant of rabies is often transmitted to other species including coyotes, bobcats, llamas, horses, javelina, badger, and dogs. A fox rabies epizootic that started in Gila county in 1999, has moved north and west to become a major problem in Yavapai county three years later.

Raccoons: A group of raccoons, some of which were incubating rabies, were translocated from Florida to West Virginia and Virginia in the 1970's. This initiated an epizootic of raccoon rabies that has spread throughout the eastern United States. The eastern raccoon rabies epizootic is responsible for thousands of rabies infections in wild animals annually, with spillover into domestic animals (especially cats) and to some large rodents like woodchucks.

Raccoons are native to non-desert areas of Arizona, but the raccoon variant of rabies found in the eastern U.S. has not been found in Arizona. The last reports of rabies in raccoons in Arizona were during the 1968-74 period when 2 raccoons tested positive. On the average, 10 raccoons are submitted for rabies testing to the Arizona state health labs annually.

Coatimundi: During the period of 1968-77, eight rabid coatis were found, and five of them were in Cochise County. There have not been any recent cases of rabies in coatimundi.

Coyote: Between 1994-2002, ten coyotes were confirmed with rabies in Arizona. They were submitted from Santa Cruz County (3), Pima County (1), Yavapai County (4), Gila County (1), and Maricopa County (1). Eight of them were infected with Arizona gray fox variant of rabies virus and the other two were not typed.

In Texas, an epizootic of rabies in coyotes started in 1988. In the next few years, coyotes effectively spread a Mexican canine variant of rabies among themselves and to unvaccinated dogs. This epizootic of rabies in Texas was responsible for more than 500 rabid dogs and coyotes from 1988 to 1995, and two human deaths. A large-scale program to control its spread using oral rabies vaccine baits dropped from airplanes was initiated in 1995.

Bobcat: Between 1986 and 2000, eight bobcats tested positive for rabies in Arizona. They were submitted from Pima, Santa Cruz, Gila, and Maricopa counties. During 2001, four bobcats were confirmed rabid from Cochise (1), Gila (2), and Yavapai (1) counties, and all of them were infected with the Arizona gray fox variant of rabies virus. During 2002, three bobcats were confirmed rabid from Cochise, Gila, and Graham counties (1 each), all of which were infected with the Arizona gray fox variant of rabies virus.

Ringtail cats: In 1993 a ringtail submitted from Santa Cruz County tested positive for rabies. There have been sporadic cases of rabies in this species in southern Arizona historically.

Javelina: In 1986 a hunter was attacked and bitten by a javelina in Gila County. The javelina was infected with the Arizona gray fox variant of rabies. In 2002, a javelina was found chewing the edge of a private porch in Gila County. This javelina was also infected with the Arizona gray fox variant of rabies.

Wild rodents and rabbits: There has never been a wild rodent or rabbit confirmed with rabies infection in Arizona. These small mammals are at low risk of contracting or transmitting rabies. Rodents that bite people do not need to be routinely tested for rabies.

Rodents may be submitted for rabies testing if:

- 1) there has been an unprovoked human exposure **and**
- 2) the rodent is exhibiting signs of possible rabies infection **or**
- 3) the rodent is sick or died and is from a rabies epizootic area. Call ADHS at (602) 364-4562 with questions.

Other wild animals: Historically, other wild animals infected with rabies in Arizona also include a badger, a bear, and a mountain lion.

Oral wildlife rabies vaccines: An oral rabies vaccine that is covered with a flavored bait has been developed for use in some wild carnivores. At this time, the vaccine does not effectively immunize skunks, and oral rabies vaccines are not being considered for use in Arizona. This could change if the epidemiology of rabies drastically changed in our state. The oral vaccine is not available commercially.

HUMAN EXPOSURE

Determining Exposure:

1. Rabies Exposure - Any bite, scratch, or other situation in which saliva, central nervous system (brain or spinal cord) tissue, or cerebral spinal fluid of a potentially rabid animal enters an open, fresh wound, or comes in contact with mucous membranes by entering the eye, mouth, nose.

***The species of the animal involved must be considered when determining if an exposure has occurred. For instance, a bite from a healthy caged rodent is not considered a rabies exposure while a bite or saliva into wound contact from an untested or rabies positive skunk, bat, or wild carnivore is always considered an exposure. Children that have had direct contact with a bat or have been sleeping in a room with a bat should be considered as exposed unless the bat tests negative for rabies at the Arizona State Laboratory. People who have been bitten by or exposed to dogs in countries that are endemic for canine rabies should consider prophylaxis unless the dog has tested negative for rabies or a 14-day quarantine has passed and the dog remained healthy. Consult the Arizona Department of Health Services (602) 364-4562 if you have any questions regarding a potential rabies exposure.

2. Not An Exposure:

- Petting or touching the body/fur of a potentially rabid animal (as long as contact with the head is ruled out).
- Touching an inanimate object that has had contact with a rabid animal does NOT constitute an exposure unless saliva or CNS tissue entered a fresh, open wound or contacted a mucous membrane.
- Being sprayed by a skunk.
- Being in the vicinity of a rabid animal; rabies is not transmitted by aerosols.

Bat exposures: Bats are increasingly implicated as significant wildlife reservoirs for variants of rabies transmitted to humans in the U.S. Recent epidemiologic data suggest that seemingly insignificant physical contact with bats may result in viral transmission, even without a clear history of animal bite. In all instances of bat-human contact where rabies transmission is under consideration, the bat in question should be collected if possible, and submitted for rabies testing. Rabies post exposure prophylaxis is recommended for all individuals with bite, scratch, or mucous membrane exposure to a bat, unless the bat tests negative for rabies. The inability of health care providers to solicit information surrounding potential exposures may be influenced by the limited injury inflicted by a bat bite (in comparison to lesions inflicted by terrestrial carnivores) or by circumstances that hinder accurate recall of events.

Domestic pets: Dogs and cats are occasionally infected with rabies in Arizona. It is important to collect information about the animal (e.g. stray vs. owned), and the circumstances of the bite or exposure (provoked vs. unprovoked) to assess the risk of rabies and the potential need for post exposure prophylaxis. If the dog/cat is available, it should be quarantined/observed for ten days. If the animal can be observed, rabies post-exposure prophylaxis is not warranted unless the animal dies and tests positive for rabies during the observation period.

Please refer to the algorithm in attachments for assistance in working with a potential exposure.

After hours and weekend rabies consultation is available throughout Arizona. In Maricopa and Pima counties, the county health departments should be contacted. In other areas of Arizona, contact the Arizona Department of Health Services by calling (602) 364-4562 and listen for instructions or call the after hours answering service at (480) 303-1191.

Human Rabies Vaccines & Immunoglobulin:

Two cell culture rabies vaccines are currently (November 2003) available in the U.S. for rabies prophylaxis in humans. They are all equally safe and effective. Some, but not all, of the county health departments in Arizona have rabies vaccines and immunoglobulin, and are prepared to administer it. Many hospital pharmacies stock it, as do the military bases.

- Human Diploid Cell Vaccine (Imovax® Rabies) and Human Rabies Immunoglobulin (Imogam® Rabies HT) is available from Aventis-Pasteur Labs [1-800-VACCINE (822-2463)]. The intradermal vaccine is no longer produced by Aventis-Pasteur.
- Purified Chick Embryo Cell Vaccine (RabAvert) is available from Chiron Corporation (1-800-244-7668) or (<http://www.rabavert.com>T).
- Human Rabies Immunoglobulin (BayRab™) is also available from Bayer Corporation (1-800-288-8370).

Human Pre-exposure Immunization

Rabies pre-exposure vaccinations are administered to individuals such as veterinarians and their staff, wildlife biologists, rehabilitators, and animal control officers who routinely have contact with stray domestic, exotic, and/or wild animals. Pre-exposure immunization consists of three cell culture rabies vaccinations given on days 0, 7, and 21-28.

Pre-exposure immunization produces an immune response that is measurable by serum neutralizing antibody titers. Pre-exposure immunization may not provide optimal protection in the face of a rabies exposure. In the event of an exposure to a rabid or suspect rabid animal, vaccinated individuals should always receive 2 post-exposure vaccine doses on days 0 and 3. Immunoglobulin should not be administered.

Two years after a person receives the initial series of pre-exposure rabies vaccinations, a serum sample should be drawn to measure serum-neutralizing antibodies. If the titer is below a 1:5 serum dilution, and the person has continuing potential rabies exposures, a single dose of rabies vaccination should be administered. Neutralizing antibody titers should be checked every 2 years. A list of laboratories can be obtained from the Arizona Department of Health Services.

Travelers to foreign countries that have endemic dog rabies:

Rabies pre-exposure vaccination is recommended for certain travelers to rabies enzootic areas. Travelers should consult with a travel medical clinic at least one month prior to leaving. If a traveler is bitten or exposed to a mammal in a rabies endemic area, they should wash the wound with soap and water and seek immediate medical attention. Post exposure rabies prophylaxis should be started immediately after an exposure in a high-risk area, and can be discontinued if the 14-day quarantine period is completed and the animal remains healthy, or if testing of the animal concludes that it was not infected with rabies. If the animal is not available for quarantine or testing, post-exposure rabies prophylaxis should be considered.

Human Post-Exposure Management

Rabies vaccination should be administered according to the most current ACIP recommendations. Physicians and providers who administer rabies post-exposure prophylaxis in Arizona are required to report each case to the Arizona Department of Health Services on a Communicable Disease report form.

I. Local Treatment of Wounds:

Individuals who are bitten by an animal should be encouraged to wash the wound thoroughly for 10-15 minutes with soap and water, and seek medical care.

II. Post-Exposure Immunization: The appropriate protocol for post-exposure prophylaxis depends on the exposed patient's previous rabies vaccination history.

A. Post-exposure protocol for people who have never been vaccinated against rabies:

1. One dose (20 IU/kg) of human rabies immune globulin (HRIG) is administered on day 0. Infiltrate as much of the HRIG into the wound site as possible, and administer any remaining HRIG intramuscularly. HRIG should never be administered in the same syringe as the rabies vaccine, or at the same site of injection. If HRIG is not readily available, it may be given up to 7 days after the post-exposure vaccine series is initiated. After 7 days (3 vaccines), vaccine induced immunity should be initiated and administration of RIG is contraindicated. HRIG is sold in 300 IU/2ml pediatric vials or 1500 IU/10ml vials.

2. Five doses of cell culture rabies vaccine at 1 ml/dose administered intramuscularly in the deltoid muscle on days 0, 3, 7, 14, and 28. The anterolateral aspect of the upper thigh can be used in infants/children. Administration of the vaccine in the gluteal region should be avoided.

B. Post-exposure protocol for previously immunized individuals cell culture rabies vaccinations:

1. Two doses of cell culture rabies vaccine (1 ml) administered intramuscularly in the deltoid on days 0 and 3 after a rabies exposure.

2. HRIG is not indicated if the pre-exposure vaccination was done with cell culture vaccines (available in the U.S. after 1980). If the exposed patient was previously immunized with an older vaccine (e.g. Duck Embryo, Suckling Mouse Brain, Inactivated Nerve Tissue) that was not produced on cell culture, then complete post-exposure prophylaxis treatment, including HRIG, should be administered.

III. Adverse reactions associated with post-exposure immunization:

- RIG: local pain and low-grade fever.
- Rabies cell culture vaccine: mild, transient, local reactions (erythema, pain, itching, and swelling) have been reported. Occasional systemic reactions include headache, nausea, abdominal pain, muscle aches, and dizziness (see attached ACIP guidelines for more on reactions).

Prophylaxis should not be discontinued due to reactions without considering the patient's risk of acquiring rabies. Any unusual or severe adverse reactions attributed to vaccines or RIG should be reported to the Arizona Department of Health Services at (602) 364-4562 and to the vaccine manufacturer.

Human Exposure Risk Reduction

Often animal bites occur when people feed, pet, or attempt to pickup or catch wildlife or unfamiliar, domesticated animals. The majority of animal bites to humans are preventable. Public education should emphasize the following preventive measures:

1. Do NOT pick up, touch, or feed wild or unfamiliar animals, especially sick or wounded ones. Teach children to keep a safe distance from wildlife and strays.
2. Keep pets from having contact with wild animals.
3. Vaccinate all cats and dogs against rabies.
4. Do not leave pet food outside and use only animal-proof trashcans.
5. Do not "rescue" seemingly abandoned young wild animals. Usually the mother will return. If the mother is dead or has not returned in many hours, call the Arizona Game and Fish Department.
6. Do not keep wild or exotic animals as pets.
7. Cap chimneys, seal openings around foundations and eaves, and cut tree branches that provide access to buildings.
8. Report sick or injured animals to a local animal control officer.
9. If an individual is bitten or scratched by any animal, promptly wash wounds with soapy water for 10 minutes and see a doctor immediately. Report all bites to the local animal control agency.
10. If a pet is bitten or scratched by another animal, wear gloves while cleansing the wound. Contact a veterinarian to determine if the pet requires treatment, including a rabies booster.

Special considerations for hunters:

1. Avoid animals which are acting strangely or that appear to be sick, including those that are aggressive, paralyzed, walking abnormally, appear to be unhealthy or are unusually tame.
2. Do not skin road kills.
3. Wear rubber gloves, eye protection, and an apron while skinning and handling animals.
4. Regularly wash hands with soap and warm water.
5. Take special care to avoid contact with saliva when skinning around the head and mouth region.
6. Do not prepare meat with equipment used for skinning, preparing heads, hides, or antlers.
7. Clean and disinfect knives, skinning boards, cutting surfaces and other equipment with a solution of bleach and water (1 part bleach: 9 parts water.) Allow 10 minutes of contact time.
8. Rabies virus is concentrated in saliva, nerve tissue, brain, and spinal cord and generally not in the muscle tissue.

GUIDELINES FOR THE SUBMISSION OF SPECIMENS FOR RABIES TESTING

The Arizona State Health Laboratories in Phoenix and Tucson are the only laboratories that are able to confirm rabies infection in animals. Testing is performed using direct fluorescent antibody (DFA). Fresh brain tissue is required for this test. Three areas of the brain are tested (brainstem, cerebellum, and hippocampus). It is important that brain tissue be maintained fresh or frozen in good condition. Tissues should not be submitted in formalin or alcohol.

Potentially decomposed or destroyed brains should be submitted to the laboratory for evaluation of whether they can be tested if there was a human or pet exposure. Any animal that is excreting rabies virus in their saliva should have detectable virus in the brain by DFA examination.

Currently, there are no reliable, standardized ante-mortem (live animal) tests that can be used to confirm whether an animal is infected with rabies.

Animals that should be submitted for testing are:

1. Animals involved in human or pet exposures or
2. Animals that have exhibited abnormal behavior, neurologic disease or sudden death.

Caged rodents such as hamsters and gerbils, should NOT be submitted for testing, since these animals have no chance for contracting rabies.

Removal of Animal Heads:

Only veterinarians, animal control officers, Game and Fish officials, and others who have been appropriately trained and have pre-exposure prophylaxis should remove animal heads. The rest of body should be incinerated.

Bats should be submitted intact. Other animals should be decapitated and only the head submitted.

Supplies:

1. Sharp knife and sharpener (optional-sharp hacksaw, dehorner, shears, or brush cutters)
2. Protective clothing:
 - Waterproof gloves (disposable or disinfect after use)
 - Face mask
 - Safety glasses or goggles
 - Optional coverall, waterproof apron (a large plastic garbage bag with holes for arms and head)
3. Cleaning supplies: Water, detergent, a disinfectant with virucidal activity (bleach), paper towels and plastic trash bags.

Procedure:

1) CAUTION: The brain, spinal cord, salivary glands, and saliva of the animal may contain rabies virus. If an exposure occurs during the process of removal of the head, it should be noted on the laboratory submission form for the animal.

2) Do not use an axe or power saw because infected material may become aerosolized.

3) Always wear protective gear (waterproof gloves, a facemask and eye protection) and exercise caution with the use of knives and other sharp objects during the procedure.

4) Packing, storing and shipping samples:

- a. The head of the animal (except bats which should be submitted whole) should be removed from the body and placed in a plastic bag. Seal the bag.
- b. Place the bag containing the animal head inside a larger plastic bag.
- c. Place at least two FROZEN gel packs on top of the specimen and seal this bag.
- d. Place the double-bagged head in a sturdy, LEAKPROOF container (preferably metal or styrofoam).
- e. Fill out the submission form (available from the lab). Place it in an envelope, and tape onto the outside of the container/box (NOT on the inside of box). Address the box.
- f. Specimens should be shipped or delivered to the lab as quickly as possible (overnight mail or same-day bus service are commonly used transport methods).
- g. Notify the lab when high priority (human or pet exposure) specimens are being shipped (phone numbers below.)

NOTE: The specimen should be refrigerated until time of shipment.

Information to accompany all specimens:

Name, address, and phone number of the submitter
Date of death and location where collected (street address or closest cross streets)
Species of animal
Owner of animal - Name, address, and phone number
Person(s) or animal(s) exposed; date of exposure
Rabies vaccination status of animal, if known

Routine submissions can be received at the laboratory between 8AM and 5PM Monday - Friday.

Shipping instructions: (Rabies testing is done by two laboratories in Arizona)

State Health Laboratory
Attn: Virology
250 N. 17th Avenue
Phoenix, AZ 85007
(602) 542-6134

Regional State Health Laboratory
416 West Congress St.
Tucson, AZ 85701
(520) 628-6360

If in Flagstaff area, submissions can be dropped off only between 8am & 5pm at:

AZ State Health Laboratory – Flagstaff (NO TESTING ON SITE)
2500 North Fort Valley Road
Flagstaff, Arizona 86001 (928) 226-1154

Routine submissions are sent by the state laboratory in Flagstaff to the state laboratory in Phoenix on Tuesdays and Thursdays only.

Clean up: Instruments and contaminated surfaces should be washed with detergent and water and then disinfected. Disinfect with a freshly prepared solution of bleach (1 pint per gallon of water), alcohol (40-70% ethanol), iodine (25 ppm) or quaternary ammonium (200 ppm) compounds. The disinfectant should remain in contact with the infected surfaces for a minimum of 10 minutes.

After hours and weekend rabies testing: Samples can be submitted after hours and on weekends only if there is human exposure to a suspected rabid animal. Contact ADHS at (602) 364-4562 and listen to the instructions or call the after hours answering service at (480) 303-1191.

Rabies and Animal Control Rules

EXCERPTS FROM
TITLE 9. HEALTH SERVICES
CHAPTER 6. DEPARTMENT OF HEALTH SERVICES
COMMUNICABLE DISEASES

Supp. 02-4

ARTICLE 1. DEFINITIONS

Section

R9-6-101. Definitions

6. "Case" means an individual with a clinical syndrome of a communicable disease whose condition is documented:
 - a. By laboratory results that support the presence of the causative agent;
 - b. By a health care provider's diagnosis based on clinical observation; or
 - c. By epidemiologic associations with communicable disease, the causative agent, or its toxic products.
24. "Quarantine" means the restriction of activities of persons or animals who have been exposed to a case or carrier of a communicable disease during its communicable period.

R9-6-105. Rabies Control

In Article 5, unless otherwise specified:

1. "Animal control agency" means a governmental agency or its designated representative with local responsibility for controlling dogs and cats.
2. "Cat" means an animal of the genus species *Felis domesticus*.
3. "Dog" means an animal of the genus species *Canis familiaris*.
4. "Euthanize" means to put an animal to death painlessly.
5. "Exposed" means bitten by or having direct contact with a rabies susceptible animal.

Historical Note

Adopted effective January 20, 1992 (Supp. 92-1). Former Section R9-6-105 renumbered to R9-6-107, new Section R9-6-105 renumbered from R9-6-102 and amended effective October 19, 1993 (Supp. 93-4). Amended effective April 4, 1997 (Supp. 97-2).

ARTICLE 3. CONTROL MEASURES FOR COMMUNICABLE AND PREVENTABLE DISEASES

R9-6-301. Diseases and Conditions Declared Reportable

The following diseases listed below are reportable. The diseases and corresponding Sections of this Article which designate the case control, contact control, environmental control, special control and outbreak control measures, if any for each such reportable disease, are listed below:

R9-6-348. Rabies in Humans

- A. Case control measures: A health care provider or operator of a blood or plasma center shall not utilize donated blood, plasma, body organs, sperm or other tissue from a case, suspect case or suspect carrier for transfusion or transplantation.
- B. Special control measures: The local health agency shall conduct or direct an epidemiologic investigation of each reported case.

Historical Note

Renumbered from R9-6-741 and amended effective October 19, 1993 (Supp. 93-4). Former Section R9-6-348 renumbered to R9-6-351; new Section R9-6-348 renumbered from R9-6-345 and amended effective April 4, 1997 (Supp. 97-2).

ARTICLE 5. RABIES CONTROL

R9-6-501. Animals Exposed to a Known Rabid Animal

- A. An animal control agency shall manage a dog or cat that has direct contact with a known or suspected rabid animal according to one of the following procedures:
 - 1. Euthanize;
 - 2. Confine in isolation for 180 days under the supervision and control of the county or municipal animal control agency and vaccinate 30 days before release:
 - a. If the exposed animal was never vaccinated,
 - b. If the exposed animal was vaccinated with a triennial vaccine more than three years before being exposed, or
 - c. If the exposed animal was vaccinated with any other vaccine more than a year before being exposed;
 - 3. Revaccinate and confine in isolation for 90 days under the supervision and control of the county or municipal animal control agency, if the animal was vaccinated less than 30 days before being exposed; or
 - 4. Revaccinate within seven days, confine and observe by the owner for 45 days with the approval and supervision of the county or municipal animal control agency under the following circumstances:
 - a. If the animal was vaccinated with a triennial vaccine more than 30 days and less than three years before being exposed, or
 - b. If the animal was vaccinated with any other vaccine more than 30 days and less than one year before being exposed.
- B. The animal control agency shall immediately euthanize, an animal, except a cat, dog, or livestock, exposed to a known rabid animal.
- C. The animal control agency shall handle a dog or cat exposed to a suspected rabid animal in the same manner as one exposed to a known rabid animal, except that confinement shall be terminated at such time as it is determined that the biting animal is not rabid. Such determination shall be a negative rabies report from the Department laboratory, or a

certificate signed by a veterinarian stating that the suspected animal is no longer showing symptoms of rabies.

D. Livestock shall be handled according to Department of Agriculture rule A.A.C. R3-2-408.

Historical Note

Amended effective December 22, 1976 (Supp. 76-5). Correction, this Section shown as amended effective December 22, 1976 should read amended effective May 12, 1977 (Supp. 77-3). Corrections, subsections (A), (B) and (C) (Supp. 77-5). Amended effective April 10, 1980 (Supp. 80-2). Former Section R9-6-116 renumbered without change as R9-6-501 effective January 28, 1987 (Supp. 87-1). Section R9-6-501 repealed, new Section adopted effective January 20, 1992 (Supp. 92-1). Former Section R9-6-501 renumbered to R9-6-701, new Section R9-6-501 renumbered from R9-6-201 and amended effective October 19, 1993 (Supp. 93-4). Amended effective April 4, 1997 (Supp. 97-2).

R9-6-502. Suspect Rabies Cases

- A. The animal control agency shall confine, supervise, and control an animal, other than livestock, that shows symptoms of rabies when captured until it dies or a veterinarian determines it is no longer showing symptoms of rabies.
- B. Whenever the animal control agency euthanizes a suspected rabid animal, it shall be done in such a way as to avoid damaging the brain, so rabies testing can be performed.

Historical Note

Amended effective December 22, 1976 (Supp. 76-5). Correction, this Section shown as amended effective December 22, 1976 should read amended effective May 12, 1977 (Supp. 77-3). Amended effective April 10, 1980 (Supp. 80-2). Amended as an emergency effective August 31, 1982 pursuant to A.R.S. § 41-1003, valid for only 90 days (Supp. 82-4). Emergency expired. Former R9-6-117 amended as a permanent rule by adding a new subsection (C) and repealing the former subsections (C), (D) and (E) effective January 21, 1983 (Supp. 83-1). Former Section R9-6-117 renumbered without change as R9-6-502 effective January 28, 1987 (Supp. 87-1). Section R9-6-502 repealed, new Section adopted effective January 20, 1992 (Supp. 92-1). Former Section R9-6-502 renumbered to R9-6-702, new Section R9-6-502 renumbered from R9-6-202 and amended effective October 19, 1993 (Supp. 93-4).

R9-6-503. Records Submitted by Enforcement Agents

By April 30 of each year, municipal, county and other animal control agents shall file with the Department a report of activities during the preceding calendar year. The report shall consist of animal control agent activities which include the number of dogs licensed, the number of stray dogs and cats impounded and method of disposition, the number and species of wild animals disposed of, and the number of animal bites reported by species of animal.

Historical Note

Amended effective December 22, 1976 (Supp. 76-5). Correction, this Section shown as amended effective December 22, 1976 should read amended effective May 12, 1977 (Supp. 77-3). Amended effective April 10, 1980 (Supp. 80-2). Amended as an emergency effective August 31, 1982 pursuant to A.R.S. § 41-1003, valid for only 90 days (Supp. 82-4). Emergency expired. Former R9-6-118 amended as a permanent rule by repealing

subsection (C) and renumbering subsections (D) through (I) effective January 21, 1983 (Supp. 83-1). Former Section R9-6-118 renumbered without change as R9-6-503 effective January 28, 1987 (Supp. 87-1). Section R9-6-503 repealed, new Section adopted effective January 20, 1992 (Supp. 92-1). Former Section R9-6-503 renumbered to R9-6-703, new Section R9-6-503 renumbered from R9-6-203 and amended effective October 19, 1993 (Supp. 93-4).

TITLE 3. AGRICULTURE
CHAPTER 2. DEPARTMENT OF AGRICULTURE
ANIMAL SERVICES DIVISION

Supp. 02-3

ARTICLE 4. ANIMAL DISEASE PREVENTION AND CONTROL

Excerpt of R3-2-402. Mandatory Disease Reporting by Veterinarians and Veterinary Laboratories

“All veterinarians and laboratories performing diagnostic services on animals shall:

1. Notify the State Veterinarian at (602) 542-4293, within four hours of diagnosing or suspecting any Office of International Epizooties List A disease, Eighth Edition, 1999, which is incorporated by reference, does not include any later amendments or editions of the incorporated matter, and is on file with the Department and the Office of the Secretary of State, chronic wasting disease, or the following List B diseases:” . . . “Rabies” (is listed among the List B diseases).

R3-2-408. Disposition of Livestock Exposed to Rabies

Livestock bitten by a known or suspected rabid animal shall be handled using the methods prescribed in the National Association of State Public Health Veterinarians' Compendium of Animal Rabies Control, 1999, Part III, Section 5. This material is incorporated by reference, does not include any later amendments or editions of the incorporated matter, and is on file with the Department and the Office of the Secretary of State.

Historical Note

Adopted effective August 19, 1983 (Supp. 83-4). Section R3-2-408 renumbered from Section R3-9-408 (Supp. 91-4). Amended by final rulemaking at 6 A.A.R. 25, effective December 8, 1999 (Supp. 99-4). December 8, 1999 effective date corrected to reflect what is on file in the Office of the Secretary of State; correct effective date is January 1, 2000 (Supp. 01-1).

R3-2-409. Rabies Vaccines for Animals

All animals in Arizona vaccinated against rabies shall be vaccinated as prescribed in the National Association of State Public Health Veterinarians' Compendium of Animal Rabies Control, 1999, Part II. This material is incorporated by reference, does not include any later amendments or editions of the incorporated matter, and is on file with the Department and the Office of the Secretary of State.

Historical Note

Adopted effective August 19, 1983 (Supp. 83-4). Amended effective October 16, 1986 (Supp. 86-5). Amended effective January 6, 1989 (Supp. 89-1). Section R3-2-409 renumbered from Section R3-9-409 (Supp. 91-4). Amended by final rulemaking at 6 A.A.R. 25, effective December 8, 1999 (Supp. 99-4). December 8, 1999 effective date corrected to reflect what is on file in the Office of the Secretary of State; correct effective date is January 1, 2000 (Supp. 01-1).

For the latest Rules pertaining to rabies within the Arizona Administrative Code, please visit:

http://www.sosaz.com/public_services/Table_of_Contents.htm

Scroll downwards to Title 9 and select Chapter 6, or scroll to Title 3 and select Chapter 2.

Arizona Revised Statutes

2002/2003

45th Legislature, 2nd regular session information

[Title 11 - Counties](#)

CHAPTER 7 - INTERGOVERNMENTAL OPERATIONS

Article 6 - Animal Control

[11-1001](#) - Definitions

[11-1002](#) - Powers and duties of the state veterinarian and the Arizona department of agriculture

[11-1003](#) - Powers and duties of department of health services

[11-1005](#) - Powers and duties of board of supervisors

[11-1006](#) - Hearing officer; hearing on civil violations; additional remedies

[11-1007](#) - Powers and duties of county enforcement agent

[11-1008](#) - License fees for dogs; issuance of dog tags; records; classification

[11-1009](#) - Kennel permit; fee; violation; classification

[11-1010](#) - Anti-rabies vaccination; vaccination and license stations

[11-1011](#) - Rabies control fund

[11-1012](#) - Dogs not permitted at large; wearing licenses

[11-1013](#) - Establishment of county pounds; impounding and disposing of dogs and cats; reclaiming impounded dogs and cats; pound fees

[11-1014](#) - Biting animals; reporting; handling and destruction

[11-1015](#) - Unlawful interference with county enforcement agent

[11-1016](#) - Removing impounded animals

[11-1017](#) - Unlawful keeping of dogs

[11-1018](#) - Exemption of cities, towns and counties

[11-1019](#) - Violation; classification

[11-1020](#) - Dogs; liability

Article 6.1 - Handling of Animals

[11-1021](#) - Proper care, maintenance and destruction of impounded animals

[11-1022](#) - Sterilization of impounded dogs and cats; definition

[11-1023](#) - Unauthorized release of animals; classification; damages

[11-1024](#) - Dog guides and service dogs; rights; procedures; violation; classification; definitions

[11-1025](#) - Liability for dog bites

[11-1026](#) - Lawful presence on private property defined

[11-1027](#) - Reasonable provocation as defense

11-1002. Powers and duties of the state veterinarian and the Arizona department of agriculture

A. The state veterinarian, employed pursuant to section 3-1211, shall designate the type or types of anti-rabies vaccines that may be used for vaccination of animals, the period of time between vaccination and revaccination and the dosage and method of administration of the vaccine.

B. The Arizona department of agriculture shall regulate the handling and disposition of animals classed as livestock that have been bitten by a rabid or suspected rabid animal or are showing symptoms suggestive of rabies.

11-1003. Powers and duties of department of health services

A. The department of health services shall regulate the handling and disposition of animals other than livestock that have been bitten by a rabid or suspected rabid animal or are showing symptoms suggestive of rabies.

B. The department of health services may require the county enforcement agent to submit a record of all dog licenses issued and in addition any information deemed necessary to aid in the control of rabies.

11-1005. Powers and duties of board of supervisors

A. Each county board of supervisors may:

1. Designate or employ a county enforcement agent. If such designation or employment is not made, the county sheriff shall be the county enforcement agent, but nothing in this article shall be deemed to prevent the county board of supervisors from designating or employing a county enforcement agent at any time it is deemed necessary or advisable.

2. Provide the county enforcement agent with such personnel and equipment as are necessary to enforce the provisions of this article and the rules adopted under this article.

3. Contract with any city or town to enforce the provisions of any ordinance enacted by such city or town for the control of dogs.

4. For the unincorporated areas of the county, by ordinance, regulate, restrain and prohibit the running at large of dogs, except dogs used for control of livestock or while being used or trained for hunting.

5. For the unincorporated areas of the county, by ordinance, regulate, restrain and prohibit the excessive and unrestrained barking of dogs.

6. Establish either:

(a) Criminal penalties not to exceed the penalties for a class 2 misdemeanor for violation of an ordinance adopted pursuant to paragraph 4 or 5.

(b) Civil penalties for violations of an ordinance adopted pursuant to paragraph 4 or 5, not to exceed five hundred dollars for each violation.

B. Fines received for violation of an ordinance adopted with a criminal penalty pursuant to subsection A, paragraph 6, subdivision (a) shall be deposited in a special, permanent, nonlapsing and nonreverting county fund to be used solely for the operation of the county enforcement agency.

C. Each county board of supervisors may establish pound fees for impounding and maintaining animals at the county pound or any pound used by the county.

D. The county board of supervisors shall be responsible for declaring a rabies quarantine area within its jurisdiction on a recommendation of the county board of health or the local health department. If a rabies quarantine area is declared, the county board of supervisors shall meet with the county board of health and the county enforcement agent and institute an emergency program for the control of rabies within that area provided that any regulations restricting or involving the movement of livestock within that area shall be developed by the state veterinarian.

11-1006. Hearing officer; hearing on civil violations; additional remedies

A. A county board of supervisors that establishes a civil penalty for violating an animal statute or ordinance may appoint one or more hearing officers to hear and determine such cases. The board may appoint a county employee to serve as hearing officer in addition to his other work.

B. The hearing officer shall hold a hearing on each violation reported by the county enforcement agent. Notice of the hearing shall be served personally on the defendant at least ten days before the hearing. The county enforcement agent shall use a uniform traffic ticket and complaint for civil traffic cases pursuant to the rules of procedure in traffic cases adopted by the supreme court, modified as applicable, in citing persons for violations of ordinances adopted with a civil penalty pursuant to section 11-1005, subsection A, paragraph 6, subdivision (b).

C. At the hearing the county enforcement agent shall present evidence of the violation and the defendant, or his attorney or other designated representative, shall have an opportunity to present evidence. The county attorney may represent and present evidence for the county enforcement agent.

D. At the conclusion of the hearing the hearing officer shall determine whether a violation occurred and, if so, impose civil penalties provided for under section 11-1005, subsection A, paragraph 6, subdivision (b). Monies collected for civil penalties shall be deposited in the county general fund. The board of supervisors shall adopt, in the same manner as the animal ordinances, written rules of procedure for the hearings and review of hearings. Final decisions of the hearing officer under this subsection are subject to judicial review under title 12, chapter 7, article 6.

E. In addition to other remedies provided by law, the board of supervisors, the county attorney, the county enforcement agent or a private individual or other entity that is specially damaged by a violation of an animal statute or ordinance may institute an injunction, mandamus, abatement or other appropriate action or proceeding to prevent or abate the violation.

11-1007. Powers and duties of county enforcement agent

A. The county enforcement agent shall:

1. Enforce the provisions of this article, county ordinances adopted under this article and municipal ordinances which the board of supervisors has contracted to enforce.

2. Issue citations for the violation of the provisions of this article, county ordinances adopted under this article and municipal ordinances which the board of supervisors has contracted to enforce. The procedure for the issuance of notices to appear shall be as provided for peace officers in section 13-3903, except that the enforcement agent shall not make an arrest before issuing the notice.

B. The issuance of citations pursuant to this section shall be subject to the provisions of section 13-3899.

C. The county enforcement agent may designate deputies.

11-1008. License fees for dogs; issuance of dog tags; records; classification

A. The board of supervisors of each county may set a license fee which shall be paid for each dog four months of age or over that is kept, harbored or maintained within the boundaries of the state for at least thirty consecutive days of each calendar year. License fees shall become payable at the discretion of the board of supervisors of each county. The licensing period shall not exceed the period of time for revaccination as designated by the state veterinarian. License fees shall be paid within ninety days to the board of supervisors. A penalty not to exceed two dollars shall be added to the license fee in the event that application is made subsequent to the date on which the dog is required to be licensed under the provisions of this article. This penalty shall not be assessed against applicants who furnish adequate proof that the dog to be licensed has been in their possession in Arizona less than thirty consecutive days.

B. If the board of supervisors adopts a license fee, the board shall provide durable dog tags. Each dog licensed under the terms of this article shall receive, at the time of licensing, such a tag on which shall be inscribed the name of the county, the number of the license, and the date on which it expires. The tag shall be attached to a collar or harness which shall be worn by the dog at all times while running at large, except as otherwise provided in this article. Whenever a dog tag is lost, a duplicate tag shall be issued upon application by the owner and payment of a fee established by the board of supervisors.

C. The board of supervisors may set license fees that are lower for dogs permanently incapable of procreation. An applicant for a license for a dog claimed to be incapable of procreation shall furnish adequate proof satisfactory to the enforcement agent that such dog has been surgically altered to be permanently incapable of procreation.

D. All fees and penalties shall be deposited in the rabies control fund pursuant to section 11-1011.

E. Any person who knowingly fails within fifteen days after written notification from the county enforcement agent to obtain a license for a dog required to be licensed, counterfeits an official dog tag, removes such tag from any dog for the purpose of intentional and malicious mischief or places a dog tag upon a dog unless the tag was issued for that particular dog is guilty of a class 2 misdemeanor.

11-1009. Kennel permit; fee; violation; classification

A. A person operating a kennel shall obtain a permit issued by the board of supervisors of the county where the kennel is located except if each individual dog is licensed.

B. The annual fee for the kennel permit is seventy-five dollars or the actual cost of recovery as determined by the board of supervisors.

C. A dog remaining within the kennel is not required to be licensed individually under section 11-1008. A dog leaving the controlled kennel conditions shall be licensed under section 11-1008 except if the dog is only being transported to another kennel which has a permit issued under this section.

D. A person who fails to obtain a kennel permit under this section is subject to a penalty of twenty-five dollars in addition to the annual fee.

E. A person who knowingly fails to obtain a kennel permit within thirty days after written notification from the county enforcement agent is guilty of a class 2 misdemeanor.

11-1010. Anti-rabies vaccination; vaccination and license stations

A. Before a license is issued for any dog, the owner or a veterinarian must present a paper or electronic copy or telefacsimile of the vaccination certificate signed by a veterinarian stating the owner's name and address, and giving the dog's description, date of vaccination, manufacturer and serial number of the vaccine used and date revaccination is due. A duplicate of each rabies vaccination certificate issued shall be transmitted to the county enforcement agent within two weeks of the date the dog was vaccinated. No dog shall be licensed unless it is vaccinated in accordance with the provisions of this article and the regulations promulgated pursuant to this article.

B. A dog vaccinated in any other state prior to entry into Arizona may be licensed in Arizona provided that, at the time of licensing, the owner of the dog presents a vaccination certificate, signed by a veterinarian licensed to practice in that state or a veterinarian employed by a governmental agency in that state, stating the owner's name and address, and giving the dog's description, date of vaccination and type, manufacturer and serial number of the vaccine used. The vaccination must be in conformity with the provisions of this article and the regulations promulgated pursuant to this article.

C. The county enforcement agent shall make provisions for vaccination clinics as deemed necessary. The vaccination shall be performed by a veterinarian.

11-1011. Rabies control fund

A. The board of supervisors shall transmit the monies collected under the provisions of this article to the county treasurer for deposit in a special fund to be known as the rabies control fund to be used for the enforcement of the provisions of this article and the regulations promulgated thereunder. The county treasurer shall maintain the fund.

B. Any unencumbered balance remaining in the rabies control fund at the end of a fiscal year shall be carried over into the following fiscal year.

11-1012. Dogs not permitted at large; wearing licenses

A. Neither a female dog during her breeding or mating season nor a vicious dog shall be permitted at large.

B. In a rabies quarantine area, no dogs shall be permitted at large. Each dog shall be confined within an enclosure on the owner's property, secured so that the dog is confined entirely to the owner's property, or on a leash not to exceed six feet in length and directly under the owner's control when not on the owner's property.

C. Any dog over the age of three months running at large shall wear a collar or harness to which is attached a valid license tag. Dogs that are used for control of livestock, being used or trained for hunting or dogs, being exhibited or trained at a kennel club event or engaged in races approved by the Arizona racing commission, and while the dogs are being transported to and from such events, need not wear a collar or harness with a valid license attached provided that they are properly vaccinated, licensed and controlled.

D. No person in charge of any dog shall permit such dog in a public park or upon any public school property unless the dog is physically restrained by a leash, enclosed in a car, cage or similar enclosure or being exhibited or trained at a recognized kennel club event, public school or park sponsored event.

11-1013. Establishment of county pounds; impounding and disposing of dogs and cats; reclaiming impounded dogs and cats; pound fees

A. The board of supervisors in each county may provide or authorize a county pound or pounds or enter into a cooperative agreement with a city, a veterinarian or an Arizona incorporated humane society for the establishment and operation of a county pound.

B. Any stray dog shall be impounded. All dogs and cats impounded shall be given proper care and maintenance.

C. Each stray dog or any cat impounded shall be kept and maintained at the county pound for a minimum of seventy-two hours unless claimed by its owner. Any person may purchase such a dog or cat upon expiration of the impoundment period, provided such person pays all pound fees established by the county board of supervisors and complies with the licensing and vaccinating

provisions of this article. If such dog or cat is to be used for medical research, no license or vaccination shall be required.

D. Any impounded licensed dog or any cat may be reclaimed by its owner or such owner's agent provided that the person reclaiming the dog or cat furnishes proof of his right to do so and pays all pound fees established by the board of supervisors. Any person purchasing such a dog or cat shall pay all pound fees established by the board of supervisors.

E. If the dog or cat is not reclaimed within the impoundment period, the county enforcement agent shall take possession of and may place the dog or cat for sale or may dispose of the dog or cat in a humane manner. The county enforcement agent may destroy impounded sick or injured dogs or cats if destruction is necessary to prevent the dog or cat from suffering or to prevent the spread of disease.

11-1014. Biting animals; reporting; handling and destruction

A. An unvaccinated dog or cat that bites any person shall be confined and quarantined in a county pound or, on request of and at the expense of the owner, at a veterinary hospital for a period of not less than ten days. The quarantine period shall start on the day of the bite incident. If the day of the bite is not known, the quarantine period shall start on the first day of impoundment. A dog properly vaccinated pursuant to this article that bites any person may be confined and quarantined at the home of the owner or wherever the dog is harbored and maintained with the consent of and in a manner prescribed by the county enforcement agent.

B. Any domestic animal, other than a dog, a cat or a caged or pet rodent or rabbit, that bites any person shall be confined and quarantined in a county pound or, on the request and at the expense of the owner, at a veterinary hospital for a period of not less than fourteen days. Livestock shall be confined and quarantined for the fourteen-day period in a manner regulated by the Arizona department of agriculture. Caged or pet rodents or rabbits shall not be quarantined or laboratory tested.

C. With the exception of a wild rodent or rabbit, any wild animal that bites any person or directly exposes any person to its saliva may be killed and submitted to the county enforcement agent or the agent's deputies for transport to an appropriate diagnostic laboratory. A wild rodent or rabbit may be submitted for laboratory testing if the animal has bitten a person and either the animal's health or behavior indicates that the animal may have rabies or the bite occurred in an area that contains a rabies epizootic, as determined by the department of health services.

D. Whenever an animal bites any person, the incident shall be reported to the county enforcement agent immediately by any person having direct knowledge.

E. The county enforcement agent may destroy any animal confined and quarantined pursuant to this section before the termination of the minimum confinement period for laboratory examination for rabies if:

1. The animal shows clear clinical signs of rabies.

2. The animal's owner consents to its destruction.

F. Any animal subject to licensing under this article found without a tag identifying its owner shall be deemed unowned.

G. The county enforcement agent shall destroy a vicious animal by order of a justice of the peace or a city magistrate. A justice of the peace or city magistrate may issue an order to destroy a vicious animal after notice to the owner, if any, and the person who was bitten, and a hearing. The justice of the peace or city magistrate may impose additional procedures and processes to protect all parties in the interest of justice and any decision by the justice of the peace or magistrate may be appealed to the superior court.

H. The owner of a vicious animal shall be responsible for any fees incurred by the enforcement agent for the impounding, sheltering and disposing of the vicious animal.

11-1015. Unlawful interference with county enforcement agent

It is unlawful for any person to interfere with the county enforcement agent in the performance of his duties.

11-1016. Removing impounded animals

No person may remove or attempt to remove an animal which has been impounded or which is in the possession of the county enforcement agent except in accordance with the provisions of this article and the regulations promulgated thereunder.

11-1017. Unlawful keeping of dogs

It is unlawful for a person to keep, harbor or maintain a dog within the state of Arizona except as provided by the terms of this article.

11-1018. Exemption of cities, towns and counties

A. The provisions of this article shall not apply to incorporated cities or towns that impose a license fee and vaccination on dogs by ordinance, provided that such ordinance is equal to or more stringent than the provisions of this article.

B. The provisions of this article shall not apply to counties which regulate the running at large of dogs in the unincorporated areas of the county by ordinance provided that such ordinance is equal to or more stringent than the provisions of this article.

11-1019. Violation; classification

Any person who fails to comply with the requirements of this article, or violates any of its provisions, is guilty of a class 2 misdemeanor unless another classification is specifically prescribed in this article.

11-1020. Dogs; liability

Injury to any person or damage to any property by a dog while at large shall be the full responsibility of the dog owner or person or persons responsible for the dog when such damages were inflicted.

11-1021. Proper care, maintenance and destruction of impounded animals

A. Any animal impounded in a county, city or town pound shall be given proper and humane care and maintenance.

B. Any animal destroyed while impounded in a county, city or town pound shall be destroyed only by the use of one of the following:

1. Sodium pentobarbital or a derivative of sodium pentobarbital.
2. Nitrogen gas.
3. T-61 euthanasia solution or its generic equivalent.

C. If an animal is destroyed by means specified in subsection B, paragraph 1 or 3 of this section, it shall be done by a licensed veterinarian or in accordance with procedures established by the state veterinarian pursuant to section 3-1213.

D. The governing body of any county, city or town which operates a pound shall establish procedures for the humane destruction of impounded animals by the methods described in subsections B and C of this section.

11-1022. Sterilization of impounded dogs and cats; definition

A. A dog or cat shall not be released for adoption from a county, city or town pound or from an animal shelter unless one of the following applies:

1. The dog or cat has been first surgically spayed or neutered.
2. there is no veterinary facility capable of performing surgical sterilization within a twenty mile radius of the pound or shelter.
3. A veterinarian determines that a medical contraindication for surgery exists that reasonably requires postponement of the surgery until the surgery can be performed in a safe and humane manner.

B. If subsection A, paragraph 2 or 3 applies, the adopting party shall sign an agreement to have the dog or cat spayed or neutered by a veterinarian within thirty days or within fifteen days of a veterinarian's determination that surgical sterilization may be performed in a safe and humane manner and shall deposit with the pound or shelter an amount sufficient to ensure that the dog or cat will be sterilized.

C. If the adoption fee includes the cost of spaying or neutering, then no deposit is required. The amount of the deposit required by subsection B shall be determined by the pound or shelter to be comparable to the lowest fee charged by veterinarians in the county. The pound or shelter shall refund to the adopting party any monies deposited pursuant to the agreement if within the time provided in the agreement there is presented a written statement signed by a licensed veterinarian that the adopted dog or cat has been spayed or neutered.

11-1023. Unauthorized release of animals; classification; damages

A person who intentionally releases an animal that is lawfully confined for scientific, research, commercial, educational or for public event, display or exhibition purposes without the consent of the owner or custodian of the animal is guilty of a class 6 felony and in addition is liable for all of the following:

1. To the owner of the animal for damages including the costs of restoring the animal to confinement and to its health condition before the release.
2. For damages to real and personal property caused by the released animal.
3. If the release causes the failure of an experiment or loss of market value, for all costs of repeating the experiment and the loss of value, including replacement of the animals, labor and materials.

11-1024. Dog guides and service dogs; rights; procedures; violation; classification; definitions

A. The legally blind, the visually impaired, the deaf and the auditorially impaired and the physically handicapped have the same right as all persons to the use of all streets, highways, walkways, common carriers, public lodging places, public eating places, public amusements and other places to which the general public is invited.

B. In any of the places listed in subsection A, every legally blind person may make use of a cane, predominately white or metallic in color, and every legally blind person, deaf person, physically handicapped person and dog guide trainer or service dog trainer may make use of a dog guide or service dog. These persons shall not be denied admittance nor be required to pay any admission charges for their dog guides or service dogs to such public places except as provided in subsection C. Such persons shall be liable for any damages done to the premises by their dog guides or service dogs. Any person using a dog guide or service dog may be required to identify the dog guide or service dog by exhibiting the dog's laminated identification card before the provisions of this section shall apply.

C. A zoo or wild animal park may prohibit a dog guide or service dog from any area of the zoo or park where the dog guide or service dog can come into direct contact with the animals contained in the zoo or park. Dog guides and service dogs shall not be excluded from public walkways or sidewalks or from any area that allows for physical barriers between the dog guides or service dogs and the animals in the zoo or park. Any zoo or wild animal park that prohibits dog guides and service dogs shall provide without cost adequate facilities for the temporary confinement of dog guides and service dogs. Such facilities shall be adequate to accommodate the anticipated attendance of legally blind, deaf or physically handicapped persons, shall be in an area not accessible to the general public, shall provide water for the dog guides and service dogs and shall otherwise be safe, clean and comfortable. The zoo or wild animal park on request by the legally blind person who is required to leave his dog guide or service dog pursuant to this subsection shall provide a sighted escort if the legally blind person is unaccompanied by a sighted person. In this subsection, "wild animal park" means an entity which is open to the public on a regular basis, which is licensed by the United States department of agriculture as an exhibit, and which is operating primarily to conserve, propagate and exhibit wild and exotic animals.

D. The driver of a vehicle approaching a legally blind pedestrian who is carrying a cane, predominately white or metallic in color, who is using a dog guide or service dog or who is assisted by a sighted person shall yield the right-of-way and take reasonable precautions to avoid injury to the pedestrian and the dog guide or service dog. The pedestrian has the same rights as any other person whether or not he is carrying the cane, using the dog guide or service dog or being assisted by a sighted person.

E. A driver who violates any provision of subsection D is liable for damages for any injury caused the pedestrian or his dog guide or service dog.

F. Any person who violates any provision of this section is guilty of a class 1 misdemeanor.

G. For purposes of this section:

1. "Dog guide" and "service dog" includes a dog guide or service dog in training.
2. "Dog guide trainer" and "service dog trainer" means any person working in conjunction with a dog guide or service dog training school, including salaried and volunteer trainers.
3. "Service dog" means a dog which has gone through a formal training program, which assists its owner in one or more daily living tasks associated with a productive life-style and which is sufficiently conditioned to be of no danger to the health and safety of the general public.

11-1025. Liability for dog bites

A. The owner of a dog which bites a person when the person is in or on a public place or lawfully in or on a private place, including the property of the owner of the dog, is liable for damages suffered by the person bitten, regardless of the former viciousness of the dog or the owner's knowledge of its viciousness.

B. Nothing in this section or in section 11-1020 shall permit the bringing of an action for damages against any governmental agency using a dog in military or police work if the bite occurred while the dog was defending itself from a harassing or provoking act, or assisting an employee of the agency in any of the following:

1. In the apprehension or holding of a suspect where the employee has a reasonable suspicion of the suspect's involvement in criminal activity.
2. In the investigation of a crime or possible crime.
3. In the execution of a warrant.
4. In the defense of a peace officer or another person.

C. Subsection B of this section shall not apply in any case where the victim of the bite was not a party to, nor a participant in, nor suspected to be a party to or a participant in, the act that prompted the use of the dog in the military or police work.

D. Subsection B of this section shall apply only where a governmental agency using a dog in military or police work has adopted a written policy on the necessary and appropriate use of a dog for the police or military work enumerated in subsection B of this section.

11-1026. Lawful presence on private property defined

A person is lawfully in or on the private property of the owner of a dog within the meaning of this article when an invitee or guest, or when in the performance of a duty imposed upon him by law of the state or United States, or by ordinances of a municipality in which such property is located.

11-1027. Reasonable provocation as defense

Proof of provocation of the attack by the person injured shall be a defense to the action for damages. The issue of provocation shall be determined by whether a reasonable person would expect that the conduct or circumstances would be likely to provoke a dog.

11-1028. Definitions

In this article, unless the context otherwise requires, the definitions in section 11-1001 apply.

For the latest Arizona Revised Statutes pertaining to rabies and animal control, please visit <http://www.azleg.state.az.us/ArizonaRevisedStatutes.asp> and scroll downwards to Title 11.

Sample*: WOLF HYBRID OWNER CONSENT FOR RABIES INOCULATION

*(This or any form used should be reviewed and approved by the veterinary clinic's legal counsel.)

I (owner name) request that (name of veterinarian, veterinary clinic) give my wolf hybrid (name of animal) a rabies vaccination. I understand that this vaccine is not licensed for use in wolf/dog or coyote/dog hybrid animals due to a lack of scientific studies showing that the rabies vaccine is effective in preventing rabies in wolf hybrids. In requesting that this vaccine be administered to my animal, I understand and release the veterinarian of responsibility should my animal contract rabies. I further understand that:

1. My animal is a breed that is susceptible to rabies, a fatal disease that can be transmitted to other animals and to humans.
2. Although this vaccine may provide immunity to my wolf hybrid, its efficacy has not been proven and I will not assume that my animal is protected in the event of an exposure to rabies.
3. My animal is subject to state and local laws and ordinances regarding the disposition (quarantine, euthanasia, testing) of animals that are exposed to rabies, and animals that bite or expose people.
4. *I understand that neither (Veterinary Clinic or Animal Control), nor the manufacturer or distributor of this rabies vaccine have made any representations or warranties as to the effectiveness of this vaccine for my animal, and I agree that none of those parties shall be liable for any damages which might result from failure of this vaccine, including but not limited to reactions, contraction of rabies virus by my animal or subsequent infection of other animals or persons by my animal.*

I fully understand the risks, potential benefits, and limitations of rabies inoculation for my animal. I have been given the opportunity to ask questions and my questions have been answered to my satisfaction.

In consideration of this agreement, I release (Veterinary Clinic or Animal Control) and its employees, the manufacturer and distributor of this rabies vaccine from any and all claims, damages or actions resulting from or connected with vaccinating my animal against rabies.

Date Signature of owner

Date Signature of Witness

Animal Bite or Exposure Report Form

Rabies Risk Assessment Guidance for Public Health Officials

Please use this form to record information on all reports of animal bites or potential animal exposure.
 All exposures to a potentially rabid animal must be documented carefully.

Personal data collection (always obtain this information):

- **Caller's Name:** _____
- **Phone Number(s):** _____
- **Name of Agency/Work Place of Caller:** _____
- **Location of Agency/Work Place:** _____
- **Date and Time of Call:** _____

Bite / exposure information:

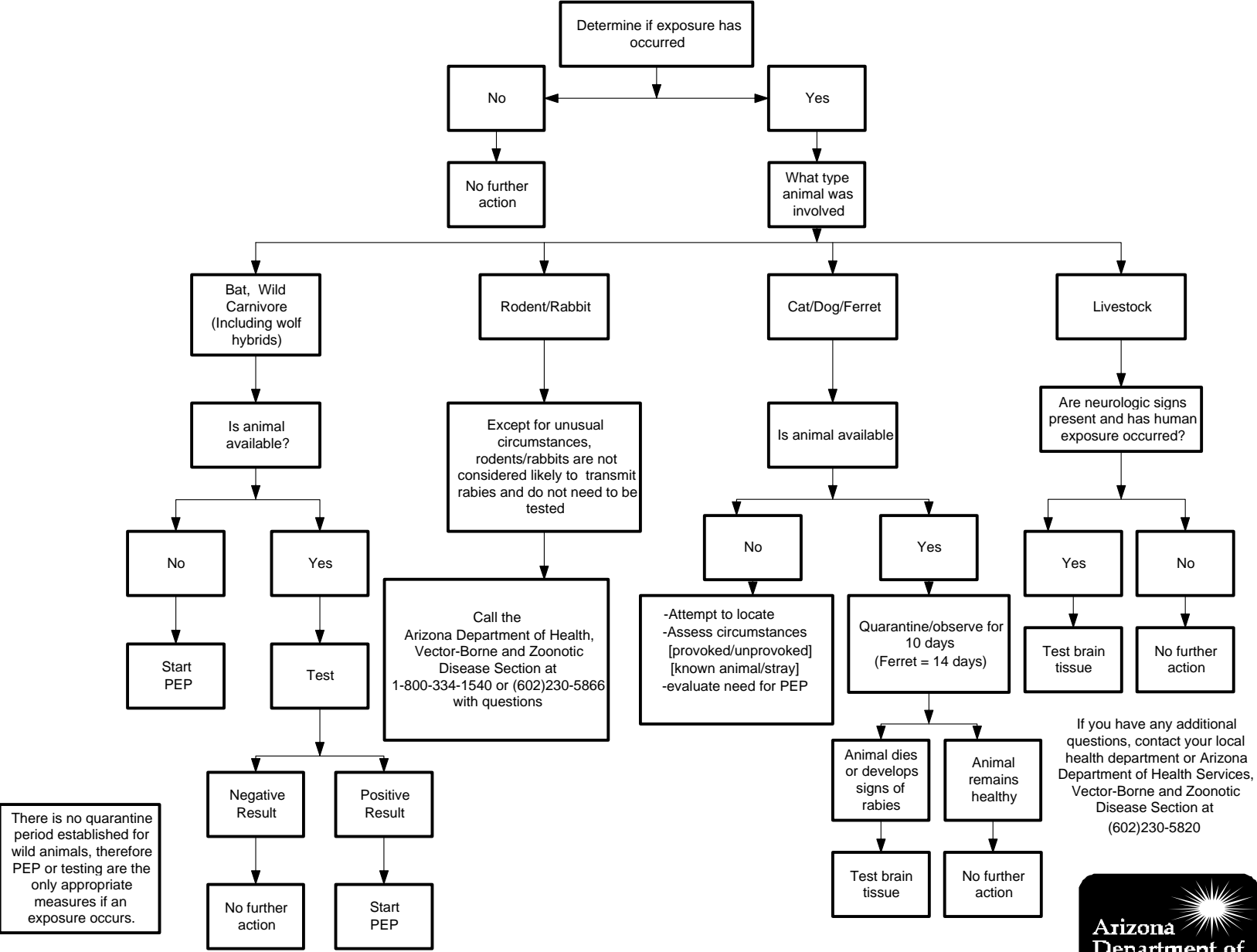
- **Name of Person(s) Bitten or Exposed:** _____
- **Sex, approximate age and weight of person bitten:** _____
- **Day and Date Bitten or Exposed:** _____
- **Time Bitten or Exposed:** _____ **Body Part Bitten/Exposed:** _____
- **Type of animal:** _____
- **Location of Animal Bite/Exposure [e.g. street address, town, hiking trail, park, etc.]:**
 ○ _____
 ○ _____
- **Circumstances of Exposure [e.g. provoked, unprovoked, other pertinent details of exposure]:**
 ○ _____
 ○ _____
- **Type of contact/exposure [e.g. bite, scratch, saliva, touch (how & where), etc.]**
 ○ _____
- **Type of Wound Care Given [e.g. bite site washed, soap & water, how soon after exposure, etc.]**
 ○ _____
- **Status of Animal? [e.g. available for testing, dead, alive in quarantine]**
 ○ _____
- **Recommendations Made to Caller**
 - **Post Exposure Prophylaxis (PEP) indicated? Yes* / No? ___ OR Level of Risk** _____
 - **Animal Tested/Quarantined?** _____
 - **Other Information:** _____
 - _____
- **List of Persons Contacted:**

NAME	NUMBER	AFFILIATION	DATE	TIME
_____	_____	_____	_____	_____
_____	_____	_____	_____	_____
_____	_____	_____	_____	_____

***PLEASE NOTE:** People seeking post-exposure prophylaxis (PEP) at local hospitals/ERs have frequently run into problems, such as patients being turned away, or vaccine and Human Rabies Immune Globulin (HRIG) being administered inappropriately. In order to avoid this, on-call staff should help “grease the skids” by:

- (1) **First, call the hospital pharmacy to be sure they have PEP pharmaceuticals in stock, or that they can obtain them from other sources.** (The pharmacy staff will probably need to know the patient’s weight in order to assess the amount of HRIG needed)
- (2) **Second, call the ER staff (charge nurse or other appropriate person) to alert them that patient(s) (identify them by name) are coming in for rabies PEP, and that it is a bonafide rabies exposure. Be sure to discuss PEP procedures, and make your phone/pager number available for further consultation.**

Rabies Protocol for Human Exposure to Animals



*PEP = Post Exposure Prophylaxis



Post-Exposure Prophylaxis Vaccination Reporting Form

ARIZONA DEPARTMENT OF HEALTH SERVICES RABIES POST-EXPOSURE REPORT			ID Number	
PATIENT'S NAME (Last) (First)	DATE OF BIRTH	<input type="checkbox"/> Male <input type="checkbox"/> Female	ETHNICITY RACE <input type="checkbox"/> Hispanic <input type="checkbox"/> White <input type="checkbox"/> Nat American <input type="checkbox"/> Other <input type="checkbox"/> Non-Hispanic <input type="checkbox"/> Black <input type="checkbox"/> Asian/Pac. Isl. <input type="checkbox"/> Unknown	
STREET ADDRESS	CENSUS TRACT	CITY		ANIMAL RABIES TEST RESULT DATE: <input type="checkbox"/> Negative <input type="checkbox"/> Positive <input type="checkbox"/> Not Done <input type="checkbox"/> Unknown
COUNTY	STATE	ZIP CODE	PHONE NO:	
BODY PART EXPOSED			EXPOSURE TYPE: <input type="checkbox"/> BITE <input type="checkbox"/> SALIVA <input type="checkbox"/> OTHER:	
DATE EXPOSURE		DATE TREATMENT INITIATED		
SPECIES OF ANIMAL			TREATMENT REGIMEN: <input type="checkbox"/> VACCINE (FIRST DOSE) <input type="checkbox"/> IMMUNE GLOBULIN	
PATIENT OCCUPATION OR SCHOOL			ANIMAL DISPOSITION: <input type="checkbox"/> QUARANTINED <input type="checkbox"/> EUTHANIZED <input type="checkbox"/> UNABLE TO LOCATE <input type="checkbox"/> DIED	
PHYSICIAN OR OTHER REPORTING SOURCE		PHONE NO:		
STREET ADDRESS	CITY	STATE	ZIP CODE	