

## ORIGINAL ARTICLE

## Preclinical amyloid pathology biomarker positivity: effects on tau pathology and neurodegeneration

K Höglund<sup>1,2,5</sup>, S Kern<sup>1,3,5</sup>, A Zettergren<sup>1,3</sup>, A Börjesson-Hansson<sup>1,3</sup>, H Zetterberg<sup>1,4</sup>, I Skoog<sup>1,3</sup> and K Blennow<sup>1</sup>

Brain autopsy and biomarker studies indicate that the pathology of Alzheimer's disease (AD) is initiated at least 10–20 years before clinical symptoms. This provides a window of opportunity to initiate preventive treatment. However, this emphasizes the necessity for biomarkers that identify individuals at risk for developing AD later in life. In this cross-sectional study, originating from three epidemiologic studies in Sweden ( $n = 1428$ ), the objective was to examine whether amyloid pathology, as determined by low cerebrospinal fluid (CSF) concentration of the 42 amino acid form of  $\beta$ -amyloid ( $A\beta_{42}$ ), is associated with biomarker evidence of other pathological changes in cognitively healthy elderly. A total of 129 patients were included and CSF levels of  $A\beta_{42}$ , total tau, tau phosphorylated at threonine 181 (p-tau), neurogranin, VILIP-1, VEGF, FABP3,  $A\beta_{40}$ , neurofilament light, MBP, orexin A, BDNF and YKL-40 were measured. Among these healthy elderly, 35.6% ( $N = 46$ ) had CSF  $A\beta_{42}$  levels below  $530 \text{ pg ml}^{-1}$ . These individuals displayed significantly higher CSF concentrations of t-tau ( $P < 0.001$ ), p-tau (181) ( $P < 0.001$ ), neurogranin ( $P = 0.009$ ) and FABP3 ( $P = 0.044$ ) compared with amyloid-negative individuals. Our study indicates that there is a subpopulation among healthy older individuals who have amyloid pathology along with signs of ongoing neuronal and synaptic degeneration, as well as tangle pathology. Previous studies have demonstrated that increase in CSF tau and p-tau is a specific sign of AD progression that occurs downstream of the deposition of  $A\beta$ . On the basis of this, our data suggest that these subjects are at risk for developing AD. We also confirm the association between *APOE*  $\epsilon 4$  and amyloid pathology in healthy older individuals.

*Translational Psychiatry* (2017) **7**, e995; doi:10.1038/tp.2016.252; published online 10 January 2017

## INTRODUCTION

The pathological hallmarks of Alzheimer's disease (AD), the most common cause of dementia, are the aggregation and deposition of  $\beta$ -amyloid ( $A\beta$ ) peptides into plaques, hyperphosphorylation and aggregation of tau protein with formation of tangles along with atrophy due to neurodegeneration.<sup>1</sup> Although still controversial, biomarkers reflecting the accumulation of  $A\beta$  deposition in the brain are believed to be the earliest detectable sign of AD in healthy elderly<sup>2,3</sup> and studies both in autosomal dominant AD and late-onset AD suggest that tangle formation occurs after deposition of  $A\beta$  in brain.<sup>2,4</sup> Three core cerebrospinal fluid (CSF) biomarkers, reflecting the key characteristics of AD pathology, are included in the diagnostic criteria.<sup>5</sup> The presence of brain amyloid pathology is reflected by a decrease in CSF  $A\beta_{42}$  levels,<sup>6,7</sup> whereas high levels of tau correlate with greater intensity of neuronal degeneration and high levels of phosphorylated tau correlate with neurofibrillary tangle load in the brain.<sup>8</sup>

The concordance between amyloid PET images and CSF  $A\beta_{42}$  is above 90%.<sup>9–11</sup> Recent failures in clinical trials, where patients who already have cognitive symptoms or dementia have been included, suggest that we need to treat AD at the prodromal or even preclinical phase of the disease. Brain autopsy studies, and more recent biomarker studies, indicate that the pathology is

initiated at least 10–20 years before clinical symptoms.<sup>2,12–19</sup> This knowledge provides a window of opportunity to initiate treatment to prevent the disease. However, this emphasizes the necessity for biomarkers that identify individuals at risk for developing AD later in life. Further, we need to gain knowledge on the development and progression of concomitant pathology.

Although presence of amyloid pathology is part of the diagnostic criteria,<sup>20</sup> amyloid pathology is not specific for AD. Plaque pathology may be present in individuals with Parkinson's disease<sup>21</sup> in patients with both familial<sup>22</sup> and iatrogenic<sup>23</sup> Creutzfeldt–Jakob disease, and in cases with traumatic brain injury.<sup>24</sup> We also know that around 30% of healthy elderly individuals have amyloid pathology.<sup>25–27</sup> These data are cross-sectional and longitudinal studies are scarce. However, one longitudinal study indicates that around 20% of healthy elderly with amyloid pathology remain cognitively healthy with a follow-up of 8 years.<sup>28</sup> In addition, other common dementias can overlap with AD both in terms of symptoms and CSF profile, and mixed pathologies are common.<sup>29</sup> Genetic and *in vitro* studies have indicated that inflammation<sup>30</sup> and synaptic function<sup>31,32</sup> may be linked to  $A\beta$  production, aggregation and clearance, as well as  $A\beta$  toxicity. Previous biomarker studies support that CSF proteins may reflect such mechanisms.<sup>33–36</sup> The mechanistic and pathological similarities across neurodegenerative disorders further highlight

<sup>1</sup>Clinical Neurochemistry Laboratory, Institute of Neuroscience and Physiology, Department of Psychiatry and Neurochemistry, The Sahlgrenska Academy, Centre for ageing and Health, AgeCap, University of Gothenburg, Sahlgrenska University Hospital, Mölndal, Sweden; <sup>2</sup>Department of Neurobiology, Care Sciences and Society, Center for Alzheimer Disease Research, Neurogeriatrics Division, Karolinska Institutet, Novum, Stockholm, Sweden; <sup>3</sup>Department of Molecular Neuroscience, UCL Institute of Neurology, Queen Square, London, UK and <sup>4</sup>Neuropsychiatric Epidemiology Unit, Institute of Neuroscience and Physiology, Department of Psychiatry and Neurochemistry, The Sahlgrenska Academy, Centre for Ageing and Health, AgeCap, University of Gothenburg, Mölndal, Sweden. Correspondence: Dr K Höglund, Clinical Neurochemistry Laboratory, Department of Psychiatry and Neurochemistry, Institute of Neuroscience and Physiology, the Sahlgrenska Academy at University of Gothenburg, Sahlgrenska University Hospital, Mölndal SE-431 80, Sweden.

E-mail: [kina.hoglund@neuro.gu.se](mailto:kina.hoglund@neuro.gu.se).

<sup>5</sup>These authors contributed equally to the work.

Received 10 March 2016; revised 1 June 2016; accepted 30 June 2016

the need for both cross-sectional studies comparing individuals with and without AD pathology and longitudinal studies starting when individuals are in the preclinical stage.

Within the framework of the population-based H70-studies in Gothenburg the aim of this study was to examine if amyloid pathology, as determined by low CSF concentration of A $\beta$ 42, is associated with biomarker evidence of other pathological changes, such as neurodegeneration, inflammation and lipid homeostasis, in cognitively healthy elderly. We have analyzed several CSF biomarkers reflecting the core pathological hallmarks of AD along with biomarkers reflecting the above-suggested pathology. Healthy elderly individuals were classified into those with (CSF A $\beta$ 42  $\leq$  530 pg ml $^{-1}$ ) and without (CSF A $\beta$ 42 > 530 pg ml $^{-1}$ ) amyloid plaque pathology.<sup>37</sup>

## MATERIALS AND METHODS

### Participants

This analysis originates from three epidemiologic studies in Gothenburg, Sweden, the Prospective Population Study of Women (PPSW) and the Gerontological and Geriatric Population Studies (H70), which have been described previously,<sup>38–41</sup> and the H85-study. The participants were sampled from the Swedish Population Register on the basis of their birth date and were born in 1914, 1918, 1922, 1923, 1924 and 1930. Both persons living in private households and in residential care were included. In the PPSW/H70 study, 1409 individuals were eligible in 2009–2010 and 857 agreed to participate (response rate 61%). Among these, 88 (10.3%) consented to a lumbar puncture (LP). The H85 study is a population study of 85-year olds born on specific dates in 1923–1924. There were 944 individuals eligible in 2008–2010, and 571 agreed to participate (response rate 61%). Among these, 62 (10.9%) consented to an LP. Overall, among the 150 with an LP, 16 were excluded due to dementia and 5 due to incomplete biomarker information, leaving 129 for the present study. These 129 participants are defined as cognitively healthy elderly as they do not fulfill the criteria for dementia and they have no previous history of memory complaints. Demographic data are shown in Table 1.

The studies were approved by the Regional Ethical Review Board in Gothenburg, and informed consent was obtained from all participants and/or their relatives in cases of dementia.

### Study procedures

The clinical examination, performed at the inclusion of the population study, was conducted at an outpatient department or in the participant's home and included comprehensive social, functional, physical, neuropsychiatric and neuropsychological examinations, as well as close informant interviews.

### Neuropsychiatric examinations and interviews

Semistructured neuropsychiatric examinations were performed by trained psychiatric research nurses. These examinations included ratings of common symptoms and signs of dementia (for example, assessments of memory, orientation, general knowledge, apraxia, visuospatial function, understanding proverbs, following commands, naming ability and

language) and have been described in detail previously.<sup>42,43</sup> Cognitive function was also measured with the Mini Mental State Examination (MMSE).<sup>44</sup>

The psychiatric nurses who performed the examinations were supervised and trained by psychiatrists. Inter-rater reliability between psychiatrists and nurses was studied in 50 individuals who had dual ratings by either psychiatric research nurses or psychiatrists. Inter-rater agreement for the symptoms and signs used to diagnose dementia was between good and excellent (kappa values between 0.74 and 1.00).<sup>45</sup> Close informant interviews were also performed. The interviews were semistructured and comprised questions about changes in behavior and intellectual function, psychiatric symptoms and activities of daily living, and, in cases of dementia, age of onset and disease course.

### Diagnoses

Dementia was diagnosed by geriatric psychiatrists according to the Diagnostic and Statistical Manual of Mental Disorders (DSM-III-R),<sup>46</sup> based on symptoms rated during the neuropsychiatric examinations and information from the close informant interviews, as described previously.<sup>42,43</sup> Participants with dementia at baseline were excluded from further analysis.

### Genotyping

Blood samples were collected and the single-nucleotide polymorphisms (SNPs) rs7412 and rs429358, in *APOE* (gene map locus 19q13.2) were genotyped with KASPar PCR SNP genotyping system (LGC Genomics, Hoddesdon, Herts, UK). Genotype data for these two SNPs were used to unambiguously define  $\epsilon$ 2,  $\epsilon$ 3 and  $\epsilon$ 4 alleles.

### CSF sampling and biomarker analyses

All CSF samples were collected by LP in the L3/L4 or the L4/L5 interspace in the morning. The first 12 ml of CSF were collected in a polypropylene tube and immediately transported to the local laboratory for centrifugation at 1800 g in 20 °C for 10 min. The supernatant was gently mixed to avoid possible gradient effects, aliquoted in polypropylene tubes and stored at –70 °C.

The CSF total tau and tau phosphorylated at threonine 181 (p-tau) were determined using a sandwich enzyme-linked immunosorbent assay (ELISA; INNOTEST, Fujirebio, Ghent, Belgium) htau Ag and PHOSPHO\_TAU (181P); Innogenetics, as previously described.<sup>47,48</sup> CSF A $\beta$ 42 was measured using a sandwich ELISA (INNOTEST  $\beta$ -amyloid<sub>1–42</sub>), specifically constructed to measure A $\beta$  starting at amino acid 1 and ending at amino acid 42.<sup>49</sup> Neurogranin and A $\beta$ 40 were measured on the Meso Scale Discovery (MSD) platform using an internally developed assay<sup>50</sup> or the V-PLEX (Meso Scale Diagnostics, Rockland, MD, USA) A $\beta$  Peptide Panel 1 (4G8) Kit, respectively. CSF levels of neurofilament light (NFL) were measured using the ELISA-kit from UmanDiagnostics (NF-light Umeå, Sweden).<sup>51</sup> CSF levels of YKL-40 were determined using a sandwich ELISA (R&D Systems, Minneapolis, MN, USA)<sup>36</sup> and levels of myelin basic protein (MBP) and brain-derived neurotrophic factor (BDNF) were analyzed by ELISA (Active MBP; Diagnostic Systems Laboratories, Webster, TX, USA;<sup>52</sup> BDNF Emax Immunoassay System, Promega, Madison, WI, USA<sup>53</sup>), while the CSF levels of vascular endothelial growth factor (VEGF) and heart type fatty acid binding protein 3 (FABP3) were analyzed on the MSD platform (PLEX Plus Human VEGF Kit and Human FABP3 Kit, Meso Scale Diagnostics). CSF orexin A was analyzed by an in-house RIA.<sup>54</sup> Finally, visinin-like protein 1 (VILIP-1) was analyzed using a commercially available ELISA (VILIP-1 Human ELISA, BioVendor R&D, Kassel, Germany) according to manufacture's instructions but with minor modifications, the calibration curve ranged from 1.25–0.02 ng ml $^{-1}$  and samples were analyzed in a twofold dilution. All assays have been validated using CSF samples following a detailed protocol including precision and accuracy. CSF samples in the present study underwent a single freeze thaw cycle prior to analyses and all samples were analyzed in duplicate with a coefficient of variability (CV) acceptance criteria of < 20%. Values had to pass quality control criteria, internal control samples for approval of individual plates, and kit quality controls within the expected range as defined by the Clinical Neurochemistry lab or the manufacturer.

### Classification

The 129 cognitively healthy elderly individuals were classified as having brain amyloid pathology, defined as CSF A $\beta$ 42 levels ( $\leq$ 530 pg ml $^{-1}$ ), or

**Table 1.** Demographic characteristics of study sample by levels of  $\beta$ -Amyloid(42)

	Total group	$\leq$ 530 pg ml $^{-1}$ A $\beta$ 42	> 530 pg ml $^{-1}$ A $\beta$ 42
Number (%)	129 (100)	43 (33.3)	86 (66.6)
Gender (M/F)	56/73	20/23	36/53
MMSE (mean)	28.4 (1.6)	28.6 (1.5)	28.3 (1.6)
Age (mean)	81.9 (3.4)	82.5 (3.6)	81.6 (3.3)
APOE4 carrier <sup>a</sup>	34 (26%)	22 (65%)	12 (35%)

Abbreviations: A $\beta$ 42, amyloid  $\beta$  42; F, female; M, male; MMSE, Mini Mental State Examinations. <sup>a</sup>*P*-value < 0.05 using Fisher's Exact Test comparing those with high A $\beta$ 42 (> 530 pg ml $^{-1}$ ) and low CSF A $\beta$ 42 ( $\leq$ 530 pg ml $^{-1}$ ).

not ( $>530 \text{ pg ml}^{-1}$ ) where CSF A $\beta$ 42 was measured using ELISA (INNOTEST  $\beta$ -amyloid1-42). This cutoff was previously defined in a longitudinal study at the Sahlgrenska University Hospital Laboratory, to classify all subjects according to presence of biochemical evidence of AD pathology.<sup>37</sup>

### Statistical analyses

Statistical analyses were performed using PASW Statistics for Windows (Version 18.0.; SPSS Chicago, IL, USA). Associations between each biomarker with age, gender, MMSE and *APOE*  $\epsilon$ 4 carrier status were tested using multivariate linear regression models. Differences in biomarker levels between the two categories of CSF A $\beta$ 42 were tested with Mann–Whitney *U*-tests, while differences in the distribution of *APOE*  $\epsilon$ 4 carriers between the two CSF A $\beta$ 42 categories were tested with Fisher's exact test. Interaction effects between age group and categories of CSF A $\beta$ 42 were examined with general linear models. All tests were two-sided and statistical significance was defined as *P*-values  $<0.05$ .

## RESULTS

The subgroup without dementia who underwent LP had a tendency to more often be men (43.4% vs 33.8%,  $P=0.039$ ), had higher MMSE (range in LP subgroup 23–30, mean 28.4 vs mean 27.6;  $P=0.003$ ) and lower Brief Scale of Anxiety (BSA) score (mean 6.4 vs mean 7.7;  $P=0.025$ ) compared with those who did not agree to LP. There was no difference in education, age at examination or Montgomery–Asberg Depression Scale.

In this population-based sample, 36% of cognitively healthy individuals were biomarker positive for amyloid pathology. They had increased CSF levels of total tau ( $P < 0.001$ ), P-tau (181) ( $P < 0.001$ ), FABP3 ( $P=0.044$ ) and neurogranin ( $P=0.009$ ), compared with those who were biomarker negative for amyloid pathology (Figures 1a–d, Table 2). Levels of total tau, p-tau and neurogranin were significantly associated with levels of A $\beta$ 42 ( $P < 0.001$ ,  $P < 0.001$  and  $P=0.005$ , respectively) where lower levels of A $\beta$ 42 are linked to increased levels of the biomarker. There was no difference in the CSF levels of NFL, YKL-40, MBP, VILIP-1, BDNF, A $\beta$ 40, VEGF or orexin A between the two groups. There was no association between the CSF biomarker levels and either age, gender or MMSE.

*APOE*4 status was significantly associated with amyloid pathology (higher levels of A $\beta$ 42 were seen in those without allele 4, ( $P < 0.001$ , Figure 2)) but no significant associations were seen with any other biomarker. After controlling for the effect of A $\beta$ 42 by stratifying by the cutoff value of  $530 \text{ pg ml}^{-1}$  there were still no apparent associations between *APOE*  $\epsilon$ 4 allele and the CSF biomarkers.

Sixty-five percent of *APOE*  $\epsilon$ 4 carriers had CSF A $\beta$ 42  $\leq 530 \text{ pg ml}^{-1}$ , whereas only 20% of the non-carriers had CSF A $\beta$ 42  $\leq 530 \text{ pg ml}^{-1}$ . Among *APOE*  $\epsilon$ 4 non-carriers, those biomarker positive for amyloid pathology had higher CSF levels of total tau ( $P < 0.001$ ), p-tau ( $P < 0.001$ ), neurogranin ( $P=0.005$ ), YKL-40 ( $P=0.042$ ), FABP3 ( $P=0.005$ ) and VILIP-1 ( $P=0.006$ ) than those biomarker negative for plaque pathology (Table 3). Comparing those with and without biomarker positivity for plaque pathology among the *APOE*  $\epsilon$ 4 carriers only, CSF levels of A $\beta$ 40 were significantly different, with lower levels in the group biomarker positive for plaque pathology.

## DISCUSSION

We found that 36% of cognitively healthy individuals with a mean age of 81.9 years had pathological CSF A $\beta$ 42, and that these individuals more often had two other ongoing neuropathological processes; tangle pathology, indicated by significantly increased CSF levels of p-tau, and neurodegeneration, indicated by significantly increased CSF levels of total tau (Figures 1a and b). Previous studies have demonstrated that increase in CSF p-tau is a

specific sign of AD progression that occurs downstream of the deposition of A $\beta$ .<sup>37</sup> On the basis of this, our data suggest that these cognitively healthy older individuals are at risk for developing AD. Ongoing neurodegeneration is further supported by the significantly increased levels of neurogranin (Figure 1d), previously shown to be a specific and novel biomarker for synaptic degeneration in AD and MCI.<sup>33,55</sup>

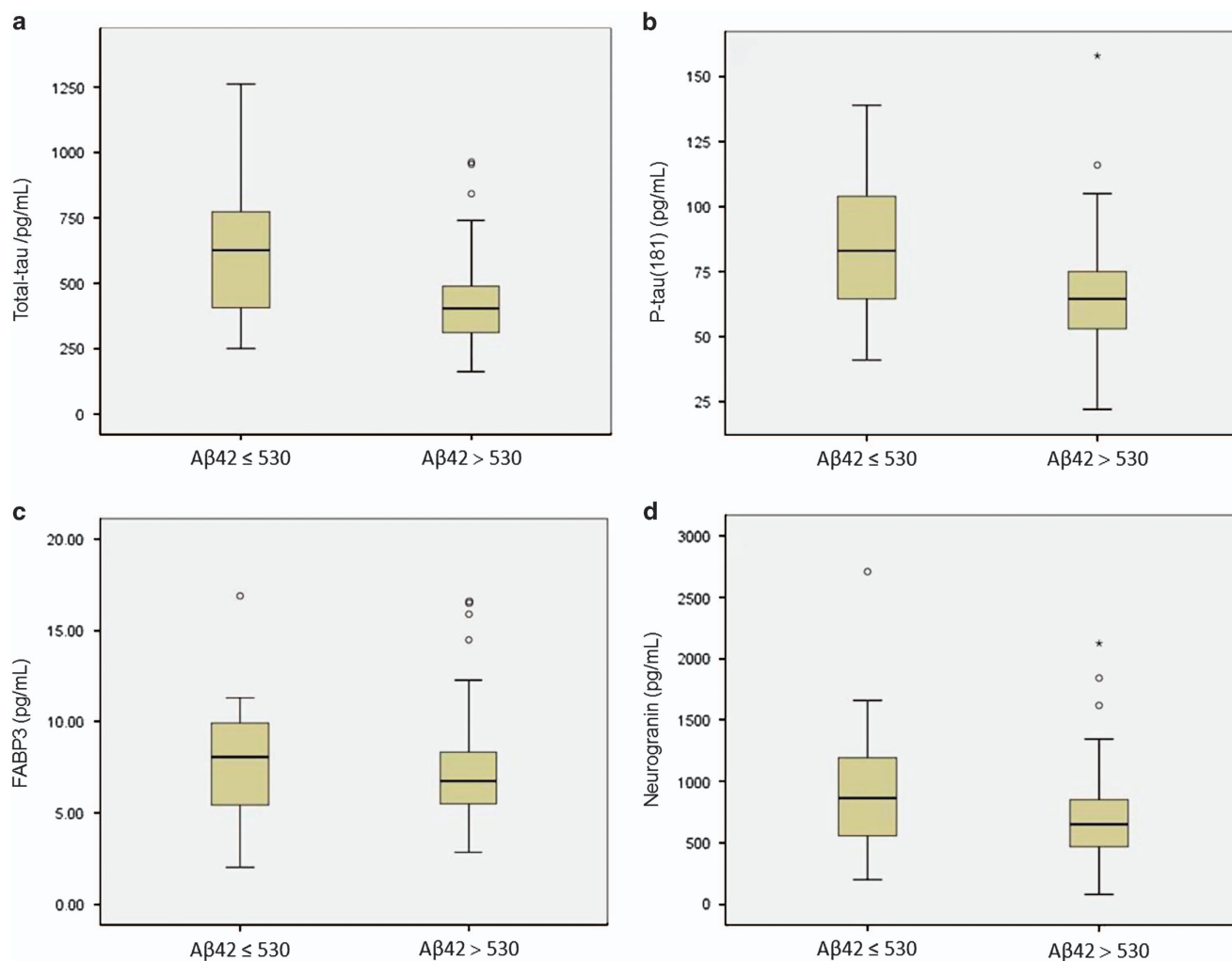
In further support for an ongoing neuronal degeneration associated with amyloid pathology, is the finding of increased CSF levels of the heart type FABP (FABP3; Figure 1c). FABP3 is a cytoplasmic protein abundantly expressed in tissues with an active fatty acid metabolism, such as heart, brain and liver.<sup>56</sup> FABPs are considered as markers for neuronal damage as levels are increased after traumatic brain injury and Creutzfeldt–Jakob disease.<sup>57</sup> Previous studies report that CSF levels of FABP3 have a diagnostic and prognostic value for AD.<sup>58–61</sup> In agreement with the present study, a recent study also found that CSF FABP3 levels (reflecting neurodegeneration) are influenced by amyloid pathology.<sup>62</sup>

We further showed a strong association between *APOE*  $\epsilon$ 4 and amyloid pathology (Figure 2). Thus, almost 70% of *APOE*  $\epsilon$ 4 carriers displayed amyloid pathology. This is in agreement with previous reports on the role of *APOE*  $\epsilon$ 4 in aggregation and clearance of A $\beta$ ,<sup>63,64</sup> as well as with previous biomarker studies in healthy elderly.<sup>65</sup> Several previous studies<sup>65,66</sup> found a clear, allele-dependent, association between *APOE*  $\epsilon$ 4 and levels of CSF A $\beta$ 42 in older people. A recent study showed that amyloid PET-positive individuals, regardless of *APOE*  $\epsilon$ 4 status, have equally low CSF A $\beta$ 42, and PET-negative cases equally high CSF A $\beta$ 42, indicating that the lowering of CSF A $\beta$ 42 in *APOE*  $\epsilon$ 4 carriers is due to cortical A $\beta$  deposition.<sup>67</sup> No association between *APOE*  $\epsilon$ 4 and CSF total tau was found in agreement with previous studies.<sup>68</sup> Further, no relationship between *APOE*  $\epsilon$ 4 status and any of the other CSF biomarkers could be demonstrated.

There was no difference in any CSF biomarkers between those with and without plaque pathology within the *APOE*  $\epsilon$ 4 carrier group, whereas CSF levels of total tau, p-tau, neurogranin, FABP3, VILIP-1 and YKL-40 were increased in those with plaque pathology in the *APOE*  $\epsilon$ 4 non-carrier group. These data indicate that amyloid pathology alone is driving concomitant pathology represented by neurodegeneration (VILIP-1, total tau and FABP3), synaptic degeneration (neurogranin), tangle pathology (p-tau) and inflammation (YKL-40), independently of the *APOE*  $\epsilon$ 4 carrier status. Longitudinal data are needed to elucidate whether these individuals have an even higher risk of developing AD, and whether the potential disease progression rate is different.

Individuals with no amyloid pathology and no *APOE*  $\epsilon$ 4 allele seem to present few signs of ongoing pathological processes indicating that they are at very low risk of developing AD or other neurodegenerative disorders. Long-term follow-up studies are of great importance to confirm this hypothesis. A recent study with longitudinal follow-up<sup>69</sup> indicates that AD biomarker patterns are detected already during early middle age and that these are associated with amyloid PET positivity and cognitive decline, supporting that there is a long preclinical period where concomitant pathology is present. Although the present study is cross-sectional, our data support this conclusion.

The cutoff for classification into amyloid-positive and -negative has previously been defined in a longitudinal study at the Sahlgrenska hospital.<sup>37</sup> Several studies have confirmed that there is a direct correlation between CSF A $\beta$ 42 levels and amyloid plaque load measured by PET in patients with AD and MCI. However, less is known about the correlation between these two readouts in healthy elderly and absence of amyloid PET in the present study is a potential weakness. However, a recent study by Sutphen *et al.*<sup>69</sup> found an association between CSF A $\beta$ 42 and amyloid PET in middle-aged individuals. It is likely that this is true also in healthy older persons. It has also been suggested that CSF

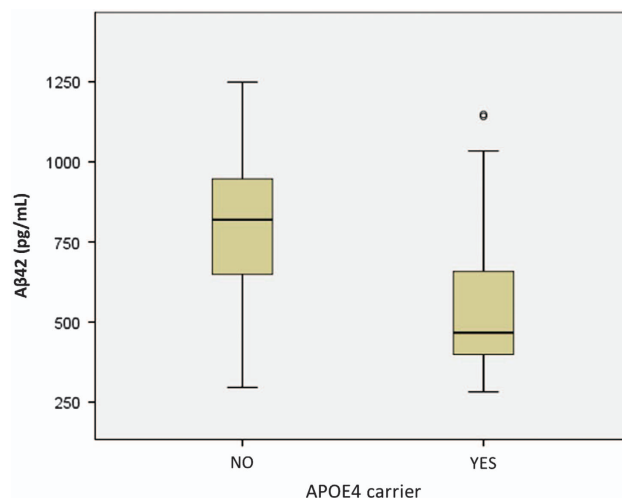


**Figure 1.** Box plots of CSF biomarkers (a) total tau ( $P < 0.001$ ), (b) p-tau ( $P < 0.001$ ), (c) FABP3 ( $p0.044$ ) and (d) neurogranin ( $P = 0.009$ ) Neurogranin, comparing those with low ( $< 530 \text{ pg ml}^{-1}$ ) and high ( $> 530 \text{ pg ml}^{-1}$ ) CSF A $\beta$ 42 (42 amino acid form of  $\beta$ -amyloid). A $\beta$ 42, amyloid  $\beta$  42; CSF, cerebrospinal fluid; FABP3, fatty acid binding protein-3; p-tau, tau phosphorylated at 181.

**Table 2.** Mean biomarker values in CSF by levels of Amyloid  $\beta$  (42)

CSF biomarker ( $\text{pg ml}^{-1}$ )	A $\beta$ 42 $\leq 530 \text{ pg ml}^{-1}$ (n = 43)	A $\beta$ 42 $> 530 \text{ pg ml}^{-1}$ (n = 86)
p-Tau	83.6 (25.5)	65.2 (19.7)*
Total tau	609.1(230.4)	428.2 (163.6)*
NFL	1 847. (987.2)	1940 (1353)
Neurogranin	889.3 (414.5)	686.1 (322.8)*
VILIP-1	0.13 (0.06)	0.12 (0.05)
YKL-40	303.3 (92.2)	274.4 (89.2)
FABP3	7.9 (2.8)	7.2 (2.7)*
BDNF	12 593 (3876)	12 824 (4175 )
VEGF	1.8 (0.5)	1.9 (0.5)
MBP	1.8 (0.5)	1.7 (0.5)
Orexin A	691.1 (159.4)	724.1 (189.4)

Abbreviations: A $\beta$ 42, amyloid  $\beta$  (42); BDNF, brain-derived neurotrophic factor; CSF, cerebrospinal fluid; FABP3, fatty acid binding protein-3; MBP, myelin basic protein; NFL, neurofilament light; p-tau, tau phosphorylated at 181; VEGF, vascular endothelial growth factor; VILIP-1, visinin-like protein 1; YKL-40, also called chitinase 3-like 1. Values are provided as mean (s.d.) in  $\text{pg ml}^{-1}$  for all CSF protein biomarkers except for VILIP-1 where levels are presented as  $\text{ng ml}^{-1}$ . \* $P$ -value  $< 0.05$  using Mann Whitney U-Test comparing those with high A $\beta$ 42 ( $> 530 \text{ pg/ml}$ ) and low CSF A $\beta$ 42 ( $\leq 530 \text{ pg ml}^{-1}$ ).



**Figure 2.** Box plots of CSF A $\beta$ 42 comparing APOE  $\epsilon$ 4 carriers and APOE  $\epsilon$ 4 non-carriers. There was a clear association between APOE  $\epsilon$ 4 status and CSF A $\beta$ 42 ( $P < 0.001$ ). CSF, cerebrospinal fluid.



**Table 3.** Selected CSF biomarker mean values by plaque pathology within *APOEε4* carrier and non-carrier group

CSF biomarker	<i>APOEε4</i> non-carriers		<i>APOEε4</i> carriers	
	$A\beta_{42} \leq 530$ (n = 18)	$A\beta_{42} > 530$ (n = 74)	$A\beta_{42} \leq 530$ (n = 22)	$A\beta_{42} > 530$ (n = 12)
p-tau	90.2 (23)	64.5 (20.4)	77.5 (27.4)	69.7 (14.3)
total tau	673.2 (218.7)	423.1 (167.5)	550.8 (229.9)	459.1 (139.8)
FABP3	8.7 (3.0)	7.1 (2.9)	7.4 (2.6)	7.2 (1.7)
YKL-40	309.1 (65.2)	272.9 (92.9)	299.9 (109.1)	283.7 (64.1)
VILIP-1	0.15 (0.06)	0.12 (0.05)	0.12 (0.06)	0.14 (0.05)
neurogranin	954.1 (349.3)	688.6 (331.1)	830.1 (480)	670.9 (280.3)

Abbreviations: CSF, cerebrospinal fluid; FABP3, fatty acid binding protein-3; p-tau, tau phosphorylated at 181; VILIP-1, visinin-like protein 1; YKL-40, also called chitinase 3-like 1. Values are provided as mean (s.d.) in  $\text{pg ml}^{-1}$  for all CSF protein biomarkers except for YKL-40, VILIP-1 and FABP3, which are presented as  $\text{ng ml}^{-1}$ . Among *APOE ε4* non-carriers, significantly higher CSF levels of total tau ( $P < 0.001$ ), p-tau ( $P < 0.001$ ), neurogranin ( $P = 0.005$ ), YKL-40 ( $P = 0.042$ ), FABP3 ( $P = 0.005$ ) and VILIP-1 ( $P = 0.006$ ) were found in those biomarker positive for amyloid pathology.

$A\beta_{42}$  is an earlier indicator of  $A\beta$  aggregation compared with PET.<sup>2,69</sup> Our finding that 36% of healthy older persons in the population had amyloid pathology is consistent with previous findings. It is even slightly lower compared with a study where 65% of healthy elderly above 80 years were amyloid PET positive.<sup>70</sup> The latter study support a gradual increase in number of PET-positive healthy elderly with age, 10% in the age between 50–59 years and 18% in the age between 60–69 years.

There was no increase in CSF levels of NFL, a suggested marker for subcortical pathology, among those with amyloid pathology. Previous studies indicate a positive correlation between CSF NFL and total tau in AD as well as an association between subcortical axonal degeneration and the three core biomarkers.<sup>71</sup> However, these individuals were under clinical investigation for AD in a memory clinic, indicating that cognitive symptoms were present, which is not the case in the present study. One may speculate that changes in NFL may be a later event; however, this needs to be confirmed in a longitudinal follow-up study.

Among the strengths of this study are the representative population-based sample, the comprehensive examinations conducted by trained psychiatric nurses and the exclusion of participants with dementia. However, some limitations need to be addressed. First, the overall number of participants is relatively low. We therefore did not have the statistical power to carry out a stratified analysis regarding heterozygous and homozygous *APOE ε4* status. Second, only ~15% consented to LP. This group had higher global cognitive function and is probably healthier than the general population of the same age. Finally, this is a population study focusing on Scandinavian participants aged 79–95 years at baseline, and results cannot be generalized to clinical samples to younger populations or to other ethnic groups.

Our study indicates that there is a subpopulation among healthy older individuals that have amyloid pathology have abnormal levels of the CSF biomarkers tau, p-tau, FABP3 and neurogranin. We also confirm the association between *APOE ε4* and amyloid pathology in healthy elderly individuals. These findings support the notion that preclinical amyloid pathology is associated with biomarker evidence of neurodegeneration, tau pathology and synaptic dysfunction already in cognitively normal elderly.

#### CONFLICT OF INTEREST

KB and HZ are co-founders of Brain Biomarker Solutions in Gothenburg AB, a GU Venture-based platform company at the University of Gothenburg. KB has served as a consultant for Eli Lilly, Novartis, Roche Diagnostics, and Sanofi-Aventis and at Advisory Boards for Amgen and IBL International, and given lectures for Fujirebio Europe and Lundbeck. KB's research team has received grants for collaborative research projects from Eli Lilly and Roche Diagnostics. KH, AZ, SK, IS and AB have

nothing to disclose. As primary authors, KH and SK have had full access to all the data in the study and take responsibility for the integrity of the data and the accuracy of the data analysis.

#### ACKNOWLEDGMENTS

We acknowledge the work by Åsa Källén and Ulrika Törnqvist for the biochemical analyses as well as Tom Marlow for the statistical analyses. This work was supported by grants from The Swedish Research Council (The Swedish Research Council 14002, 11267, 2005-8460, 825-2007-7462, 825-2012-5041, 2013-8717), Swedish Research Council for Health, Working Life and Welfare (2001-2835 AGECAP 2013-2300, 2013-2496, 2013-0475, Epilife 2006-1506), the Alzheimer's Association (IIRG-09-131338), the Eivind och Elsa K:son Sylvan Foundation, Stiftelsen Söderström-Königska Sjukhemmet, Stiftelsen för Gamla Tjänarinnor, Stiftelsen Professor Bror Gadelius' Minnesfond, Hjalmar Svenssons Foundation, the Swedish Alzheimer Foundation, the Alma och Anna Yhlen Foundation, Konung Gustaf V:s och Drottning Victorias Stiftelse, Swedish Brain Power, Sahlgrenska University Hospital (ALF), the Knut and Alice Wallenberg Foundation, the Torsten Söderberg Foundation, Frimurarestiftelsen and Hjärnfonden. KB and HZ are co-founders of Brain Biomarker Solutions in Gothenburg AB, a GU Venture-based platform company at the University of Gothenburg.

#### REFERENCES

- Blennow K, de Leon MJ, Zetterberg H. Alzheimer's disease. *Lancet* 2006; **368**: 387–403.
- Bateman RJ, Xiong C, Benzinger TL, Fagan AM, Goate A, Fox NC *et al*. Clinical and biomarker changes in dominantly inherited Alzheimer's disease. *N Engl J Med* 2012; **367**: 795–804.
- Fagan AM, Head D, Shah AR, Marcus D, Mintun M, Morris JC *et al*. Decreased cerebrospinal fluid Abeta(42) correlates with brain atrophy in cognitively normal elderly. *Ann Neurol* 2009; **65**: 176–183.
- Buchhave P, Minthon L, Zetterberg H, Wallin AK, Blennow K, Hansson O. Cerebrospinal fluid levels of beta-amyloid 1-42, but not of tau, are fully changed already 5 to 10 years before the onset of Alzheimer dementia. *Arch Gen Psychiatry* 2012; **69**: 98–106.
- Dubois B, Feldman HH, Jacova C, Dekosky ST, Barberger-Gateau P, Cummings J *et al*. Research criteria for the diagnosis of Alzheimer's disease: revising the NINCDS-ADRDA criteria. *Lancet Neurol* 2007; **6**: 734–746.
- Fagan AM, Mintun MA, Mach RH, Lee SY, Dence CS, Shah AR *et al*. Inverse relation between in vivo amyloid imaging load and cerebrospinal fluid Abeta42 in humans. *Ann Neurol* 2006; **59**: 512–519.
- Strozyk D, Blennow K, White LR, Launer LJ. CSF Abeta 42 levels correlate with amyloid-neuropathology in a population-based autopsy study. *Neurology* 2003; **60**: 652–656.
- Blennow K, Hampel H, Weiner M, Zetterberg H. Cerebrospinal fluid and plasma biomarkers in Alzheimer disease. *Nat Rev Neurol* 2010; **6**: 131–144.
- Mattsson N, Insel PS, Landau S, Jagust W, Donohue M, Shaw LM *et al*. Diagnostic accuracy of CSF Ab42 and florbetapir PET for Alzheimer's disease. *Ann Clin Transl Neurol* 2014; **1**: 534–543.
- Palmqvist S, Zetterberg H, Blennow K, Vestberg S, Andreasson U, Brooks DJ *et al*. Accuracy of brain amyloid detection in clinical practice using cerebrospinal fluid beta-amyloid 42: a cross-validation study against amyloid positron emission tomography. *JAMA Neurol* 2014; **71**: 1282–1289.

- 11 Fagan AM, Mintun MA, Shah AR, Aldea P, Roe CM, Mach RH et al. Cerebrospinal fluid tau and ptau(181) increase with cortical amyloid deposition in cognitively normal individuals: implications for future clinical trials of Alzheimer's disease. *EMBO Mol Med* 2009; **1**: 371–380.
- 12 Braak H, Braak E. Diagnostic criteria for neuropathologic assessment of Alzheimer's disease. *Neurobiol Aging* 1997; **18**(4 Suppl): S85–S88.
- 13 Fagan AM, Xiong C, Jasielec MS, Bateman RJ, Goate AM, Benzinger TL et al. Longitudinal change in CSF biomarkers in autosomal-dominant Alzheimer's disease. *Sci Transl Med* 2014; **6**: 226ra30.
- 14 Gomez-Isla T, Price JL, McKeel DW Jr., Morris JC, Growdon JH, Hyman BT. Profound loss of layer II entorhinal cortex neurons occurs in very mild Alzheimer's disease. *J Neurosci* 1996; **16**: 4491–4500.
- 15 Hulette CM, Welsh-Bohmer KA, Murray MG, Saunders AM, Mash DC, McIntyre LM. Neuropathological and neuropsychological changes in "normal" aging: evidence for preclinical Alzheimer disease in cognitively normal individuals. *J Neuropathol Exp Neurol* 1998; **57**: 1168–1174.
- 16 Markesbery WR, Schmitt FA, Kryscio RJ, Davis DG, Smith CD, Wekstein DR. Neuropathologic substrate of mild cognitive impairment. *Arch Neurol* 2006; **63**: 38–46.
- 17 Morris JC, Price JL. Pathologic correlates of nondemented aging, mild cognitive impairment, and early-stage Alzheimer's disease. *J Mol Neurosci* 2001; **17**: 101–118.
- 18 Price JL, Ko AI, Wade MJ, Tsou SK, McKeel DW, Morris JC. Neuron number in the entorhinal cortex and CA1 in preclinical Alzheimer disease. *Arch Neurol* 2001; **58**: 1395–1402.
- 19 Villemagne VL, Burnham S, Bourgeat P, Brown B, Ellis KA, Salvado O et al. Amyloid beta deposition, neurodegeneration, and cognitive decline in sporadic Alzheimer's disease: a prospective cohort study. *Lancet Neurol* 2013; **12**: 357–367.
- 20 Dubois B, Feldman HH, Jacova C, Hampel H, Molinuevo JL, Blennow K et al. Advancing research diagnostic criteria for Alzheimer's disease: the IWG-2 criteria. *Lancet Neurol* 2014; **13**: 614–629.
- 21 Kotzbauer PT, Cairns NJ, Campbell MC, Willis AW, Racette BA, Tabbal SD et al. Pathologic accumulation of alpha-synuclein and Aβeta in Parkinson disease patients with dementia. *Arch Neurol* 2012; **69**: 1326–1331.
- 22 Ghoshal N, Cali I, Perrin RJ, Josephson SA, Sun N, Gambetti P et al. Codistribution of amyloid beta plaques and spongiform degeneration in familial Creutzfeldt-Jakob disease with the E200K-129M haplotype. *Arch Neurol* 2009; **66**: 1240–1246.
- 23 Jaunmuktane Z, Mead S, Ellis M, Wadsworth JD, Nicoll AJ, Kenny J et al. Evidence for human transmission of amyloid-beta pathology and cerebral amyloid angiopathy. *Nature* 2015; **525**: 247–250.
- 24 Hong YT, Veenith T, Dewar D, Outtrim JG, Mani V, Williams C et al. Amyloid imaging with carbon 11-labeled Pittsburgh compound B for traumatic brain injury. *JAMA Neurol* 2014; **71**: 23–31.
- 25 Aizenstein HJ, Nebes RD, Saxton JA, Price JC, Mathis CA, Tsopelas ND et al. Frequent amyloid deposition without significant cognitive impairment among the elderly. *Arch Neurol* 2008; **65**: 1509–1517.
- 26 Jack CR Jr., Lowe VJ, Weigand SD, Wiste HJ, Senjem ML, Knopman DS et al. Serial PIB and MRI in normal, mild cognitive impairment and Alzheimer's disease: implications for sequence of pathological events in Alzheimer's disease. *Brain* 2009; **132**(Pt 5): 1355–1365.
- 27 Pike KE, Savage G, Villemagne VL, Ng S, Moss SA, Maruff P et al. Beta-amyloid imaging and memory in non-demented individuals: evidence for preclinical Alzheimer's disease. *Brain* 2007; **130**(Pt 11): 2837–2844.
- 28 Villemagne VL, Pike KE, Darby D, Maruff P, Savage G, Ng S et al. Aβeta deposits in older non-demented individuals with cognitive decline are indicative of preclinical Alzheimer's disease. *Neuropsychologia* 2008; **46**: 1688–1697.
- 29 Skillback T, Farahmand BY, Rosen C, Mattsson N, Nagga K, Kilander L et al. Cerebrospinal fluid tau and amyloid-beta1-42 in patients with dementia. *Brain* 2015; **138**(Pt 9): 2716–2731.
- 30 Bouvier DS, Murai KK. Synergistic actions of microglia and astrocytes in the progression of Alzheimer's disease. *J Alzheimers Dis* 2015; **45**: 1001–1014.
- 31 Cirrito JR, Yamada KA, Finn MB, Sloviter RS, Bales KR, May PC et al. Synaptic activity regulates interstitial fluid amyloid-beta levels in vivo. *Neuron* 2005; **48**: 913–922.
- 32 Koffie RM, Hyman BT, Spires-Jones TL. Alzheimer's disease: synapses gone cold. *Mol Neurodegener* 2011; **6**: 63.
- 33 Kvarnberg H, Duits FH, Ingelsson M, Andreassen N, Ohrfelt A, Andersson K et al. Cerebrospinal fluid levels of the synaptic protein neurogranin correlates with cognitive decline in prodromal Alzheimer's disease. *Alzheimers Dement* 2014; **11**: 1180–1190.
- 34 Lee JM, Blennow K, Andreassen N, Laterza O, Modur V, Olander J et al. The brain injury biomarker VLP-1 is increased in the cerebrospinal fluid of Alzheimer disease patients. *Clin Chem* 2008; **54**: 1617–1623.
- 35 Olsson B, Hertze J, Lautner R, Zetterberg H, Nagga K, Höglund K et al. Microglial markers are elevated in the prodromal phase of Alzheimer's disease and vascular dementia. *J Alzheimers Dis* 2013; **33**: 45–53.
- 36 Rosen C, Andersson CH, Andreasson U, Molinuevo JL, Bjerke M, Rami L et al. Increased levels of chitotriosidase and YKL-40 in cerebrospinal fluid from patients with Alzheimer's disease. *Dement Geriatr Cogn Dis Extra* 2014; **4**: 297–304.
- 37 Hansson O, Zetterberg H, Buchhave P, Londos E, Blennow K, Minthon L. Association between CSF biomarkers and incipient Alzheimer's disease in patients with mild cognitive impairment: a follow-up study. *Lancet Neurol* 2006; **5**: 228–234.
- 38 Steen B, Djurfeldt H. The gerontological and geriatric population studies in Gothenburg, Sweden. *Z Gerontol* 1993; **26**: 163–169.
- 39 Bengtsson C, Ahlqvist M, Andersson K, Bjorkelund C, Lissner L, Soderstrom M. The Prospective Population Study of Women in Gothenburg, Sweden, 1968-69 to 1992-93. A 24-year follow-up study with special reference to participation, representativeness, and mortality. *Scand J Prim Health Care* 1997; **15**: 214–219.
- 40 Skoog I. Psychiatric epidemiology of old age: the H70 study—the NAPE lecture 2003. *Acta Psychiatr Scand* 2004; **109**: 4–18.
- 41 Karlsson B, Klenfeldt IF, Sigstrom R, Waern M, Ostling S, Gustafson D et al. Prevalence of social phobia in non-demented elderly from a Swedish population study. *Am J Geriatr Psychiatry* 2009; **17**: 127–135.
- 42 Guo X, Waern M, Sjogren K, Lissner L, Bengtsson C, Bjorkelund C et al. Midlife respiratory function and Incidence of Alzheimer's disease: a 29-year longitudinal study in women. *Neurobiol Aging* 2007; **28**: 343–350.
- 43 Skoog I, Nilsson L, Palmertz B, Andreasson LA, Svanborg A. A population-based study of dementia in 85-year-olds. *N Engl J Med* 1993; **328**: 153–158.
- 44 Folstein MF, Folstein SE, McHugh PR. "Mini-mental state". A practical method for grading the cognitive state of patients for the clinician. *J Psychiatr Res* 1975; **12**: 189–198.
- 45 Wancata J, Borjesson-Hanson A, Ostling S, Sjogren K, Skoog I. Diagnostic criteria influence dementia prevalence. *Am J Geriatr Psychiatry* 2007; **15**: 1034–1045.
- 46 American Psychiatric Association. *Diagnostic and Statistical Manual of Mental Disorders*. 3rd edn. American Psychiatric Disorders: Washington DC, 1987.
- 47 Blennow K, Wallin A, Agren H, Spenger C, Siegfried J, Vanmechelen E. Tau protein in cerebrospinal fluid: a biochemical marker for axonal degeneration in Alzheimer disease? *Mol Chem Neurobiol* 1995; **26**: 231–245.
- 48 Vanmechelen E, Vanderstichele H, Davidsson P, Van Kerschaver E, Van Der Perre B, Sjogren M et al. Quantification of tau phosphorylated at threonine 181 in human cerebrospinal fluid: a sandwich ELISA with a synthetic phosphopeptide for standardization. *Neurosci Lett* 2000; **285**: 49–52.
- 49 Andreassen N, Hesse C, Davidsson P, Minthon L, Wallin A, Winblad B et al. Cerebrospinal fluid beta-amyloid(1-42) in Alzheimer disease: differences between early- and late-onset Alzheimer disease and stability during the course of disease. *Arch Neurol* 1999; **56**: 673–680.
- 50 Kvarnberg H, Portelius E, Andreasson U, Brinkmalm G, Hellwig K, Lelental N et al. Characterization of the postsynaptic protein neurogranin in paired cerebrospinal fluid and plasma samples from Alzheimer's disease patients and healthy controls. *Alzheimers Res Ther* 2015; **7**: 40.
- 51 Norgren N, Rosengren L, Stigbrand T. Elevated neurofilament levels in neurological diseases. *Brain Res* 2003; **987**: 25–31.
- 52 Bjerke M, Jonsson M, Nordlund A, Eckerstrom C, Blennow K, Zetterberg H et al. Cerebrovascular biomarker profile is related to white matter disease and ventricular dilation in a LADIS substudy. *Dement Geriatr Cogn Dis Extra* 2014; **4**: 385–394.
- 53 Pillai A, Bruno D, Sarreal AS, Hernando RT, Saint-Louis LA, Nierenberg J et al. Plasma BDNF levels vary in relation to body weight in females. *PLoS ONE* 2012; **7**: e39358.
- 54 Portelius E, Soyninen H, Andreasson U, Zetterberg H, Persson R, Karlsson G et al. Exploring Alzheimer molecular pathology in Down's syndrome cerebrospinal fluid. *Neurodegener Dis* 2014; **14**: 98–106.
- 55 Wellington H, Paterson RW, Portelius E, Tornqvist U, Magdalinos N, Fox NC et al. Increased CSF neurogranin concentration is specific to Alzheimer disease. *Neurology* 2016; **86**: 829–835.
- 56 Moulle VS, Cansell C, Luquet S, Cruciani-Guglielmacchi C. The multiple roles of fatty acid handling proteins in brain. *Front Physiol* 2012; **3**: 385.
- 57 Pelsers MM, Glatz JF. Detection of brain injury by fatty acid-binding proteins. *Clin Chem Lab Med* 2005; **43**: 802–809.
- 58 Chiasserini D, Parnetti L, Andreasson U, Zetterberg H, Giannandrea D, Calabresi P et al. CSF levels of heart fatty acid binding protein are altered during early phases of Alzheimer's disease. *J Alzheimers Dis* 2010; **22**: 1281–1288.
- 59 Olsson B, Hertze J, Ohlsson M, Nagga K, Höglund K, Basun H et al. Cerebrospinal fluid levels of heart fatty acid binding protein are elevated prodromally in Alzheimer's disease and vascular dementia. *J Alzheimers Dis* 2013; **34**: 673–679.
- 60 Rosen C, Mattsson N, Johansson PM, Andreasson U, Wallin A, Hansson O et al. Discriminatory analysis of biochip-derived protein patterns in CSF and plasma in neurodegenerative diseases. *Front Aging Neurosci* 2011; **3**: 1.
- 61 Bjerke M, Kern S, Blennow K, Zetterberg H, Waern M, Borjesson-Hanson A et al. Cerebrospinal fluid fatty acid-binding protein 3 is related to dementia development in a population-based sample of older adult women followed for 8 years. *J Alzheimers Dis* 2015.

- 62 Desikan RS, Thompson WK, Holland D, Hess CP, Brewer JB, Zetterberg H *et al*. Heart fatty acid binding protein and Abeta-associated Alzheimer's neurodegeneration. *Mol Neurodegener* 2013; **8**: 39.
- 63 Castellano JM, Kim J, Stewart FR, Jiang H, DeMattos RB, Patterson BW *et al*. Human apoE isoforms differentially regulate brain amyloid-beta peptide clearance. *Sci Transl Med* 2011; **3**: 89ra–57.
- 64 Kim J, Basak JM, Holtzman DM. The role of apolipoprotein E in Alzheimer's disease. *Neuron* 2009; **63**: 287–303.
- 65 Sunderland T, Mirza N, Putnam KT, Linker G, Bhupali D, Durham R *et al*. Cerebrospinal fluid beta-amyloid1-42 and tau in control subjects at risk for Alzheimer's disease: the effect of APOE epsilon4 allele. *Biol Psychiatry* 2004; **56**: 670–676.
- 66 Prince JA, Zetterberg H, Andreasen N, Marcusson J, Blennow K. APOE epsilon4 allele is associated with reduced cerebrospinal fluid levels of Abeta42. *Neurology* 2004; **62**: 2116–2118.
- 67 Lautner R, Palmqvist S, Mattsson N, Andreasson U, Wallin A, Palsson E *et al*. Apolipoprotein E genotype and the diagnostic accuracy of cerebrospinal fluid biomarkers for Alzheimer disease. *JAMA Psychiatry* 2014; **71**: 1183–1191.
- 68 Andreasen N, Minthon L, Clarberg A, Davidsson P, Gottfries J, Vanmechelen E *et al*. Sensitivity, specificity, and stability of CSF-tau in AD in a community-based patient sample. *Neurology* 1999; **53**: 1488–1494.
- 69 Sutphen CL, Jasielec MS, Shah AR, Macy EM, Xiong C, Vlassenko AG *et al*. Longitudinal cerebrospinal fluid biomarker changes in preclinical Alzheimer disease during middle age. *JAMA Neurol* 2015; **72**: 1029–1042.
- 70 Rowe CC, Ellis KA, Rimajova M, Bourgeat P, Pike KE, Jones G *et al*. Amyloid imaging results from the Australian Imaging, Biomarkers and Lifestyle (AIBL) study of aging. *Neurobiol Aging* 2010; **31**: 1275–1283.
- 71 Skillback T, Farahmand B, Bartlett JW, Rosen C, Mattsson N, Nagga K *et al*. CSF neurofilament light differs in neurodegenerative diseases and predicts severity and survival. *Neurology* 2014; **83**: 1945–1953.



This work is licensed under a Creative Commons Attribution-NonCommercial-NoDerivs 4.0 International License. The images or other third party material in this article are included in the article's Creative Commons license, unless indicated otherwise in the credit line; if the material is not included under the Creative Commons license, users will need to obtain permission from the license holder to reproduce the material. To view a copy of this license, visit <http://creativecommons.org/licenses/by-nc-nd/4.0/>

© The Author(s) 2017