



SHIELD: COMPARING GAS AND STAR FORMATION IN LOW-MASS GALAXIES

YARON G. TEICH^{1,2}, ANDREW T. MCNICHOLS^{1,3}, ELISE NIMS¹, JOHN M. CANNON¹, ELIZABETH A. K. ADAMS⁴,
 RICCARDO GIOVANELLI⁵, MARTHA P. HAYNES⁵, KRISTEN B. W. MCQUINN^{6,7}, JOHN J. SALZER⁸, EVAN D. SKILLMAN⁶,
 ELIJAH Z. BERNSTEIN-COOPER⁸, ANDREW DOLPHIN⁹, E. C. ELSON¹⁰, NATHALIE HAURBERG¹¹, GYULA I. G. JÓZSA^{12,13,14},
 JÜRGEN OTT¹⁵, AMELIE SAINTONGE¹⁶, STEVEN R. WARREN¹⁷, IAN CAVE¹, CEDRIC HAGEN¹, SHAN HUANG¹⁸,
 STEVEN JANOWIECKI^{8,19}, MELISSA V. MARSHALL¹, CLARA M. THOMANN¹, AND ANGELA VAN SISTINE²⁰

¹ Department of Physics & Astronomy, Macalester College, 1600 Grand Avenue, Saint Paul, MN 55105, USA; yateich@gmail.com, elise.nims@gmail.com,
jcannon@macalester.edu, kylarayner8@gmail.com, chagen2@macalester.edu, mveritym@gmail.com, claramthomann@gmail.com

² School of Education, Boston University, Two Silber Way, Boston, MA 02215, USA

³ NRAO Charlottesville, 520 Edgemont Road, Charlottesville, VA 22903-2475, USA; andrew.mcnichols@macalester.edu

⁴ ASTRON, the Netherlands Institute for Radio Astronomy, Postbus 2, 7990 AA, Dwingeloo, The Netherlands; adams@astron.nl

⁵ Center for Astrophysics and Planetary Science, Space Sciences Building, 122 Sciences Drive, Cornell University, Ithaca NY 14853 USA; riccardo@astro.cornell.edu, haynes@astro.cornell.edu

⁶ Minnesota Institute for Astrophysics, School of Physics and Astronomy, 116 Church Street, S.E., University of Minnesota, Minneapolis, MN 55455, USA; kmquinn@astro.as.utexas.edu, skillman@astro.umn.edu

⁷ McDonald Observatory, University of Texas at Austin, 2515 Speedway, Stop C1402, Austin, TX 78712, USA

⁸ Department of Astronomy, Indiana University, 727 East Third Street, Bloomington, IN 47405, USA;

slaz@astro.indiana.edu, ezbc@astro.wisc.edu, steven.janowiecki@icrar.org

⁹ Raytheon Company, 1151 E. Hermans Road, Tucson, AZ 85756, USA; adolphin@raytheon.com

¹⁰ Astrophysics, Cosmology and Gravity Centre (ACGC), Department of Astronomy, University of Cape Town, Private Bag X3, Rondebosch 7701, South Africa; ed@ast.uct.ac.za

¹¹ Physics Department, Knox College, 2 East South Street, Galesburg, IL 61401, USA; nhaerber@knox.edu

¹² SKA South Africa, Radio Astronomy Research Group, 3rd Floor, The Park, Park Road, Pinelands, 7405, South Africa; jozsa@ska.ac.za

¹³ Rhodes University, Department of Physics and Electronics, Rhodes Centre for Radio Astronomy Techniques & Technologies, P.O. Box 94, Grahamstown, 6140, South Africa

¹⁴ Argelander-Institut für Astronomie, Auf dem Hügel 71, D-53121 Bonn, Germany

¹⁵ National Radio Astronomy Observatory, P.O. Box O, 1003 Lopezville Road, Socorro, NM 87801, USA; jott@nrao.edu

¹⁶ Department of Physics and Astronomy, University College London, Gower Place, London WC1E 6BT, UK; a.saintonge@ucl.ac.uk

¹⁷ Cray, Inc., 380 Jackson Street, Suite 210, St. Paul, MN 55101, USA; swarren@cray.com

¹⁸ Center for Cosmology and Particle Physics, New York University, 4 Washington Place, New York, NY 10003, USA; shan.huang@nyu.edu

¹⁹ International Centre for Radio Astronomy Research, University of Western Australia, 35 Stirling Highway, Crawley, WA 6009, Australia

²⁰ Department of Physics University of Wisconsin-Milwaukee 3135 North Maryland Ave. Milwaukee, WI 53211, USA; vansisti@uwm.edu

Received 2016 May 31; revised 2016 September 10; accepted 2016 September 12; published 2016 November 18

ABSTRACT

We analyze the relationships between atomic, neutral hydrogen (HI) and star formation (SF) in the 12 low-mass SHIELD galaxies. We compare high spectral ($\sim 0.82 \text{ km s}^{-1} \text{ ch}^{-1}$) and spatial resolution (physical resolutions of 160–640 pc) HI imaging from the VLA with H α and far-ultraviolet imaging. We quantify the degree of co-spatiality between star-forming regions and regions of high HI column densities. We calculate the global star formation efficiencies (SFE; $\Sigma_{\text{SFR}} / \Sigma_{\text{HI}}$) and examine the relationships among the SFE and HI mass, HI column density, and star formation rate (SFR). The systems are consuming their cold neutral gas on timescales of order a few gigayears. While we derive an index for the Kennicutt–Schmidt relation of $N \approx 0.68 \pm 0.04$ for the SHIELD sample as a whole, the values of N vary considerably from system to system. By supplementing SHIELD results with those from other surveys, we find that HI mass and UV-based SFR are strongly correlated over five orders of magnitude. Identification of patterns within the SHIELD sample allows us to bin the galaxies into three general categories: (1) mainly co-spatial HI and SF regions, found in systems with the highest peak HI column densities and highest total HI masses; (2) moderately correlated HI and SF regions, found in systems with moderate HI column densities; and (3) obvious offsets between HI and SF peaks, found in systems with the lowest total HI masses. SF in these galaxies is dominated by stochasticity and random fluctuations in their ISM.

Key words: galaxies: dwarf – galaxies: evolution – galaxies: star formation

1. INTRODUCTION

1.1. Stars and Gas in Galaxies

The conversion of gas into stars is one of the most fundamental processes in astronomy. Yet, despite decades of effort, a simple prescription of star formation (SF) that successfully describes all observations of galaxies across a range of halo masses has remained elusive. In broad terms, more massive star-forming galaxies will have larger gas reservoirs (both atomic and molecular) and higher global star formation rates (SFR) than less massive systems (see, e.g.,

Kennicutt 1998a). However, the gas mass fractions in star-forming galaxies tend to increase with decreasing mass (e.g., Fisher & Tully 1975).

Empirical correlations between gas properties and various tracers of instantaneous (using H α emission, with a characteristic timescale of $\lesssim 10$ Myr) or ongoing (using FUV emission, with a characteristic timescale of $\lesssim 100$ Myr) SF are numerous in the literature. The most common parameterization relates an SFR surface density to a gas surface density:

$$\Sigma_{\text{SFR}} \propto (\Sigma_{\text{gas}})^N, \quad (1)$$

with the SFR surface density (Σ_{SFR}) in units of $M_{\odot} \text{ yr}^{-1} \text{ kpc}^{-2}$, the gas surface density (Σ_{gas}) in units of $M_{\odot} \text{ pc}^{-2}$, and N a positive number. Schmidt (1959) found that $N \approx 2$, and similar indices have been derived numerous times over the last half-century (see Elmegreen 2011 for a recent review). For example, Kennicutt (1998b) found $N = 1.4 \pm 0.15$ for 61 large spiral galaxies when relating the $\text{H}\alpha$ -based SFR to the total gas surface density (via both HI and CO observations, where the CO is used as a tracer for molecular gas).

In a study of this relation on sub-kiloparsec scales, Bigiel et al. (2008) found that the relationship between the total gas surface density and the SFR surface density varied dramatically among and within individual spiral galaxies, and that most of the sample showed little or no correlation between Σ_{HI} and Σ_{SFR} . In an associated paper, Leroy et al. (2008) found a molecular Schmidt power-law slope of $N = 1.0 \pm 0.2$ in 18 nearby spiral galaxies; similarly, Momose et al. (2013) found $N = 1.3\text{--}1.8$ for 10 nearby spiral galaxies. In a subsequent study, Bigiel et al. (2010) find no clear evidence for SF thresholds and emphasize that it may not be realistic to expect them.

Molecular gas in low-mass galaxies remains largely undetectable via traditional CO tracers, and thus studying the relationship between atomic gas and SF is especially important in these metal-poor low-mass systems (e.g., Bolatto et al. 2013). In fact, very few detections of CO gas exist at metallicities less than $\sim 10\% Z_{\odot}$, even in systems that are actively forming stars (see, e.g., Taylor et al. 1998, p. 205; Schrubba et al. 2012; Warren et al. 2015). For low mass galaxies, this implies that studying the relationship between Σ_{SFR} and Σ_{gas} as a function of galaxy mass is necessarily constrained to only the atomic gas component.

It is thus interesting to note that a correlation between Σ_{HI} and Σ_{SFR} appears to hold in some galaxies and not in others. For example, Bigiel et al. (2008) find that Σ_{HI} and Σ_{SFR} are not related in individual spiral disks. This can be compared to the results in Skillman (1987), which show that 10^{21} cm^{-2} (corresponding to $7.9 M_{\odot} \text{ pc}^{-2}$ or $10.6 M_{\odot} \text{ pc}^{-2}$ when accounting for helium) represents a requisite threshold HI surface density for massive SF. Similarly, Wyder et al. (2009) examined 19 low surface-brightness galaxies and found an apparent threshold in the HI gas surface density in the range $3\text{--}10 M_{\odot} \text{ pc}^{-2}$, below which very little SF (traced by $\text{H}\alpha$) is observed. Extending to even lower masses, Roychowdhury et al. (2009, 2011) find that all HI gas in their galaxies with $\Sigma_{\text{HI}} \gtrsim 10 M_{\odot} \text{ pc}^{-2}$ ($\approx 1.2 \times 10^{21} \text{ cm}^{-2}$) have associated SF, but there is no threshold below which SF is not observed (that is, SF is observed in regions with HI columns $< 10^{21} \text{ cm}^{-2}$). Most recently, Roychowdhury et al. (2014) found that the $\Sigma_{\text{HI}}\text{--}\Sigma_{\text{SFR}}$ relation for a set of dwarf irregular galaxies was nearly linear. Roychowdhury et al. (2015) find consistency across a range of scales (400 pc and 1 kpc) and galaxy types, including both low-mass galaxies and more massive spiral disks.

Based on the above results, it is not trivial to anticipate where in a galaxy one will observe ongoing SF—regardless of how massive that galaxy is. Knowledge of the HI properties alone is often insufficient to predict where in a given galaxy the conditions are ripe for SF. For example, Krumholz (2012) suggests that molecular gas is a better predictor of SF than the

neutral ISM. We examine this issue from the HI perspective in Section 4.2.

In addition to the Σ_{gas} versus Σ_{SFR} analysis, we also study the star formation efficiency (SFE), which is a useful metric when discussing where in a galaxy SF is occurring (Leroy et al. 2008). Several ways of describing the SFE exist, but for consistency with other surveys we use $\text{SFE} = \Sigma_{\text{SFR}}/\Sigma_{\text{gas}}$ with units of yr^{-1} . The SFE is more useful than SFR alone to identify where conditions are conducive to SF because it is normalized by the gas mass surface density. Thus, it quantifies the local physical properties in regions where the gas is being turned into stars efficiently: regions of elevated gas surface density that have no young stars associated with them are inefficient, while regions of elevated gas surface density that show co-spatiality with young stars are efficient. Conveniently, the inverse of the SFE is the gas depletion time, which is the time required for SF to consume the gas reservoir at the present-day SFR. For a sample of low-mass galaxies, Roychowdhury et al. (2014) found gas depletion timescales of $\sim 10^{10}$ years, an order of magnitude lower than is estimated for the outer regions of large spiral galaxies (Bigiel et al. 2010). We calculate gas consumption times for our sample of galaxies in Section 4.2.

1.2. Low-mass Galaxies from ALFALFA

The ALFALFA survey (Giovanelli et al. 2005) has produced one of the largest and most statistically useful catalogs of nearby, gas-rich galaxies to date. The final ALFALFA database will include source parameters for more than 30,000 systems. With the acquisition of data for ALFALFA now complete, a unique database exists to facilitate the study of fundamental galaxy properties across an unprecedented range of physical parameters. One particularly rich area of exploration that has been enabled by ALFALFA is a robustly populated faint end of the HI mass function (Martin et al. 2010). Specifically, it is possible to identify a complete sample of gas-bearing, low-mass galaxies by matching the ALFALFA database to existing optical survey data.

As introduced in Cannon et al. (2011), the ‘‘Survey of HI in Extremely Low-mass Dwarfs’’ (hereafter, SHIELD) is a multi-wavelength, detailed study of the properties of ALFALFA-discovered or cataloged systems with extremely small HI mass reservoirs (see Section 2 for a detailed discussion of the sample selection). Subsequent works have established the distances (McQuinn et al. 2014), the nebular abundances (Haurberg et al. 2015), and the qualities of SF based on spatially resolved *Hubble Space Telescope* (*HST*) imaging (McQuinn et al. 2015a). The primary goals of SHIELD are to (1) characterize the nature of SF in very low-mass galaxies and to (2) determine what fraction of the mass in these low-mass galaxies is baryonic. In this work, we undertake a comparative study of the HI gas and various tracers of recent SF in order to address goal (1). A companion paper by McNichols et al. (2016) explores the dynamical properties of our sample galaxies in order to address goal (2).

SHIELD is one of a number of recent HI surveys of dwarf galaxies using interferometric data. This list includes WHISP (The Westerbork HI Survey of Irregular and Spiral Galaxies; Swaters et al. 2002), FIGGS (Faint Irregular Galaxies GMRT Survey; Begum et al. 2008), VLA-ANGST (Very Large Array Survey of ACS Nearby Galaxy Survey Treasury Galaxies; Ott

et al. 2012), LITTLE-THINGS (Local Irregulars That Trace Luminosity Extremes in The HI Nearby Galaxy Survey; Hunter et al. 2012), and LVHIS (The Local Volume HI Survey; Kirby et al. 2012). These studies have yielded valuable insights into a total of nearly two dozen systems with $M_{\text{HI}} \lesssim 10^7 M_{\odot}$. SHIELD adds to this relatively understudied region of parameter space by significantly increasing the number of sources with resolved HI imaging.

2. GALAXY SAMPLE, OBSERVATIONS, AND DATA HANDLING

2.1. Sample Selection

SHIELD is a multi-wavelength survey of 12 low-mass galaxies in the Local Volume. Sample members were selected from the first $\sim 10\%$ of the ALFALFA-detected galaxies on the basis of estimated HI mass ($M_{\text{HI}} < 10^{7.2}$, based on flow model distances using the prescription of Masters 2005). The W_{50} condition (HI line width at 50% of peak $< 65 \text{ km s}^{-1}$, with no correction for inclination which would increase rotational velocity) discriminates against massive but HI-poor galaxies and identifies truly low-mass galaxies. Following the presentation of early SHIELD results in Cannon et al. (2011), the sources were observed with *HST* to derive their distances via the tip of the red giant branch (TRGB) method. The details are given in McQuinn et al. (2014); all sources moved to somewhat higher distances than the flow model predictions and so the HI masses of the systems are slightly increased. Even with the updated distances, all but one of the galaxies have $M_{\text{HI}} < 10^{7.3}$. The median distance, HI mass, and HI line width for the sample are 7.86 Mpc, $10^{7.06} M_{\odot}$, and 25 km s^{-1} , respectively. Table 1 provides a summary of physical characteristics of the SHIELD galaxies.

2.2. Data Products

2.2.1. Karl G. Jansky Very Large Array HI Data

The HI data for the survey were obtained using the Karl G. Jansky VLA²¹ in multiple array configurations for programs VLA/10B-187 (legacy code AC 990; P.I. Cannon) and VLA/13A-027 (legacy code AC 1115; P.I. Cannon). Our observational strategy (9, 4, and 2 hr of observation per source in the B, C, and D arrays of the VLA, respectively, with typical calibration overheads of 25%) achieves high spatial ($\sim 6''$ synthesized beam at full resolution) and spectral resolution ($\sim 0.824 \text{ km s}^{-1} \text{ ch}^{-1}$), while retaining sensitivity to extended structure. The WIDAR correlator is used to provide a single 1 MHz sub-band with 2 polarization products and 256 channels each, covering 211 km s^{-1} of frequency space at $3.906 \text{ kHz ch}^{-1}$, which is the setup for the B- and C-configuration observations. For the D-configuration observations, the frequency coverage was widened to 4 MHz (corresponding to 1024 channels and 844 km s^{-1} at $3.906 \text{ kHz ch}^{-1}$). VLA data acquisition for SHIELD began in 2010 October, and was completed in 2013. All of the sample members were observed in the B configuration except for AGC 111164, AGC 111977, and AGC 112521.

The VLA HI data reduction techniques are standard and were done using the Common Astronomy Software

Application (CASA; McMullin et al. 2007).²² Radio Frequency Interference was excised by hand. Calibrations were then derived for antenna position, antenna-based phase delays, atmospheric opacity, and bandpass frequency response. After continuum subtraction in the uv -plane, the B, C, and D-configuration measurement sets were gridded together using CASA’s CLEAN algorithm to produce data cubes. We generated a Boolean mask based on the dirty cube for use in our deep cleans (threshold set at 2.5σ). We also performed residual flux rescaling on our data cubes. Deconvolution of the dirty map induces a difference area between the “dirty beam” of the residual map and the “clean beam” of the deconvolved map and thus the resultant flux density in the final “combined” image; in order to increase the accuracy of the flux scaling in the final image (which is the linear sum of the residual map and clean map) the residual must be rescaling by some factor proportional to the difference in the (frequency-dependent) “dirty” and “clean beam” areas. This is a higher-order correction, as the error on the flux scaling of these observations is primarily limited by the calibration model uncertainties. The details and motivation for this procedure are discussed in Jörsäter & van Moorsel (1995). Following these corrections, we then implemented a correction for the primary beam attenuation. The robust data parameters are summarized in Table 2.

To produce two-dimensional images from the three-dimensional cubes, we implemented a threshold mask followed by a manual inspection and hand-blanking of the cubes. Our final data products include 4 cubes and 4 moment-0 (integrated intensity) maps for each of the 12 galaxies. The cubes are either natural-weighted or robust-weighted (explicitly, weighting = “briggs” and robust = 0.5), and at either native spectral resolution ($0.82 \text{ km s}^{-1} \text{ ch}^{-1}$) or spectrally smoothed by a factor of 3 ($2.46 \text{ km s}^{-1} \text{ ch}^{-1}$). We estimate the uncertainty on our HI flux densities to be a minimum of 10%, and propagate this throughout the calculation of HI masses, column densities, and Σ_{gas} . This estimate accounts for random noise in our maps as well as errors in flux calibration. The flux densities of the HI maps are converted to HI masses using the standard transformation for optically thin HI emission:

$$M_{\text{HI}} \approx 2.36 \times 10^5 (D)^2 \int S(v) dv, \quad (2)$$

where M_{HI} is the HI mass in M_{\odot} , D is the distance in Mpc, and the integral $\int S(v) dv$ is the line flux of the source in Jy km s^{-1} (Giovanelli & Haynes 1988).

One of the SHIELD sources, AGC 111164, presented unique challenges in the HI data processing. AGC 111164 is located $\sim 15'$ east of the more massive, gas-rich galaxy NGC 784. Both sources overlap in velocity space; NGC 784 lies almost exactly one half-power beam-width away from AGC 111164, and thus the sidelobes from NGC 784 are co-spatial with the SHIELD source and are challenging to clean properly. We used the *outlierfile* parameter for CASA’s CLEAN task, which proved to be helpful in extracting the larger source from our field. We also shifted the phase center of CLEAN to lie directly between the two sources.

²¹ The National Radio Astronomy Observatory is a facility of the National Science Foundation operated under cooperative agreement by Associated Universities, Inc.

²² <https://casaguides.nrao.edu/>

Table 1
SHIELD Galaxy Sample Properties

Galaxy ID	R.A. (J2000)	Decl. (J2000)	Distance (Mpc)	M_B (mag)	$(B-V)$ (mag)	$\log M_{\text{H I}}$ (M_{\odot})	$\log M_*$ (M_{\odot})	V_{21} (km s^{-1})	$12+\log(\text{O}/\text{H})$	A_{FUV} (mag)
(1)	(2)	(3)	(4)	(5)	(6)	(7)	(8)	(9)	(10)	(11)
AGC 110482	01:42:17.4	26:22:00	7.82 ± 0.21	-13.02 ± 0.13	0.49 ± 0.02	7.28 ± 0.05	$7.74^{+0.13}_{-0.18}$	357 ± 1	7.79 ± 0.07	0.75
AGC 111164	02:00:10.1	28:49:52	5.11 ± 0.07	-11.16 ± 0.10	0.42 ± 0.02	6.61 ± 0.05	$7.00^{+0.08}_{-0.15}$	163 ± 3	7.59 ± 0.10	0.45
AGC 111946	01:46:42.2	26:48:05	$9.02^{+0.20}_{-0.29}$	-11.87 ± 0.12	0.30 ± 0.02	7.17 ± 0.05	$7.23^{+0.13}_{-0.36}$	367 ± 1.5	7.86 ± 0.10	0.68
AGC 111977	01:55:20.2	27:57:14	$5.96^{+0.11}_{-0.09}$	-12.60 ± 0.09	0.48 ± 0.02	6.85 ± 0.05	$7.57^{+0.12}_{-0.16}$	207 ± 2	7.80 ± 0.10	0.58
AGC 112521	01:41:07.6	27:19:24	6.58 ± 0.18	-10.59 ± 0.08	0.45 ± 0.03	7.11 ± 0.05	6.85 ± 0.15	274 ± 0.5	7.33 ± 0.10	0.51
AGC 174585	07:36:10.3	09:59:11	$7.89^{+0.21}_{-0.17}$	-11.32 ± 0.13	0.41 ± 0.04	6.90 ± 0.05	$6.95^{+0.13}_{-0.20}$	356 ± 3	...	0.32
AGC 174605	07:50:21.7	07:47:40	10.89 ± 0.28	-12.22 ± 0.11	0.39 ± 0.03	7.27 ± 0.05	$7.45^{+0.17}$	351 ± 1	...	0.19
AGC 182595	08:51:12.1	27:52:48	9.02 ± 0.28	-12.70 ± 0.13	0.52 ± 0.03	7.00 ± 0.05	$7.70^{+0.16}_{-0.34}$	398 ± 2	7.75 ± 0.13	0.34
AGC 731457	10:31:55.8	28:01:33	$11.13^{+0.20}_{-0.16}$	-13.73 ± 0.11	0.38 ± 0.03	7.26 ± 0.05	$7.81^{+0.20}_{-0.78}$	454 ± 3	8.00 ± 0.10	0.23
AGC 748778	00:06:34.3	15:30:39	$6.46^{+0.14}_{-0.17}$	-10.34 ± 0.08	0.22 ± 0.03	6.67 ± 0.05	$6.48^{+0.12}_{-0.18}$	258 ± 1.5	...	0.52
AGC 749237	12:26:23.4	27:44:44	$11.62^{+0.20}_{-0.16}$	-14.12 ± 0.12	0.45 ± 0.03	7.76 ± 0.05	$7.72^{+0.19}$	372 ± 1	7.95 ± 0.06	0.16
AGC 749241	12:40:01.7	26:19:19	$5.62^{+0.17}_{-0.14}$	-10.25 ± 0.19	0.14 ± 0.03	6.75 ± 0.05	$6.60^{+0.1}_{-0.30}$	451 ± 1	...	0.12

Note. Column 1—Galaxy name. Columns 2 and 3—Coordinates of the galaxy in J2000. Column 4—TRGB-derived distances from McQuinn et al. (2014). Columns 5 and 6—Optical B-band magnitude and $(B-V)$ color from WIYN 3.5 m observations (Haurberg et al. 2015). Column 7—Galaxy H I mass from ALFALFA (Haynes et al. 2011). Column 8—Galaxy stellar mass from *HST* observations (see McQuinn et al. 2015a for details). Note that stellar masses have also been derived from *Spitzer* observations and are included in Haurberg et al. (2015). Column 9—Systemic velocity of galaxy from ALFALFA (Haynes et al. 2011). Errors are adopted as half of the error on W_{50} contained in Table 2. Column 10—Metallicity of galaxy from spectroscopic analysis in Haurberg et al. (2015). Column 11—Extinction in magnitudes calculated from Equation (3) using the $E(B-V)$ values found in the Schlegel et al. (1998) dust maps.

Table 2
SHIELD H I Data

Gal. ID	Per channel rms noise (mJy Bm ⁻¹)	Peak H I Col. Den. (×10 ²⁰ atoms cm ⁻²)	Beam Size (" × ")	Resolution (pc)	W ₅₀ (km s ⁻¹)	S _{H I} (Jy km s ⁻¹)
(1)	(2)	(3)	(4)	(5)	(6)	(7)
AGC 110482	1.0	17.6 ± 1.8	11.98 × 9.04	450	30 ± 2	1.33 ± 0.04
AGC 111164	1.4	3.0 ± 0.3	21.56 × 20.24	530	27 ± 6	0.65 ± 0.04
AGC 111946	1.1	9.7 ± 1.0	10.30 × 8.86	450	21 ± 3	0.76 ± 0.03
AGC 111977	1.5	2.9 ± 0.3	24.01 × 19.95	690	26 ± 4	0.85 ± 0.05
AGC 112521	1.3	4.8 ± 0.5	22.03 × 19.51	700	26 ± 1	0.69 ± 0.04
AGC 174585	0.88	10.7 ± 1.1	6.19 × 5.52	240	21 ± 6	0.54 ± 0.04
AGC 174605	0.51	4.5 ± 0.5	11.81 × 9.99	620	24 ± 2	0.66 ± 0.04
AGC 182595	0.69	2.0 ± 0.2	10.05 × 9.93	440	20 ± 4	0.42 ± 0.03
AGC 731457	0.88	11.3 ± 1.1	6.04 × 5.53	330	36 ± 6	0.62 ± 0.04
AGC 748778	0.93	5.7 ± 0.6	5.91 × 5.23	190	16 ± 3	0.46 ± 0.04
AGC 749237	0.79	15.8 ± 1.6	6.21 × 5.59	350	65 ± 2	1.80 ± 0.05
AGC 749241	0.79	5.5 ± 0.6	6.06 × 5.82	170	18 ± 2	0.76 ± 0.03

Note. Column 1—Galaxy name. Column 2—Single-channel rms noise in the robust-weighted (briggs = 0.5), full spectral resolution data cube. Column 3—Peak H I column density of the robust-weighted (briggs = 0.5), spectrally smoothed (by a factor of 3) moment-0 map. Column 4—Dimensions in arcseconds of the restoring beam (FWHM) for the robust-weighted cube. Column 5—Resolution element in physical units (pc) derived from the effective radius of the beam described in Column 3. Column 6—Velocity width of the galaxy 21 cm line profile from ALFALFA (Haynes et al. 2011). Column 7—Flux integral from ALFALFA (Haynes et al. 2011).

2.2.2. GALEX Archival Data Products

GALEX is a 50 cm diameter UV telescope that images the sky simultaneously in both a far-ultraviolet (FUV) and a near-ultraviolet (NUV) band, with effective wavelengths of 1528 and 2271 Å, respectively (Martin et al. 2005). The field of view of *GALEX* is approximately circular with a diameter of 1°25', with an intrinsic angular resolution of 4''2 and 5''3 FWHM in the FUV and NUV, respectively. The ultraviolet data presented here are derived from three *GALEX* programs: the Guest Investigator Program (GI), the Medium Imaging Survey (MIS), and the All-sky Imaging Survey (AIS). All sources had exposure times between ~1600 and ~2800 s except for AGC 174605, which only has AIS-depth imaging (120 s of integration). AGC 749237 has no FUV data because its 2010 observation followed the 2009 suspension of FUV operations due to an electrical overcurrent; all the other sources have FUV data. All 12 of the sources in the survey have NUV data. The *GALEX* data were processed with a pipeline which performed calibration and background subtraction. Details of the *GALEX* detectors, pipeline, calibration, and source extraction can be found in Morrissey et al. (2007). *GALEX* pipeline products have an assumed 10% flux calibration error.

The FUV and NUV images were cropped to a region centered on the galaxy and excluded most foreground and background sources. By comparing with the *HST* images, the remaining contaminants were excised by hand. Photometry was then extracted using standard techniques, and a conversion from raw counts per second in the *GALEX* images to magnitudes was performed. The *GALEX* Web site²³ and associated papers (Morrissey et al. 2007) provide the standard prescriptions to convert from background-subtracted images to AB magnitudes.

As Kennicutt (1998a) and others have shown, accounting for severe dust attenuation and extinction of light from extragalactic sources is a difficult problem to address. Buat et al. (2005) and Burgarella et al. (2005) found that in nearby star-forming galaxies, dust attenuation in the UV regime can vary

from zero to several magnitudes. The galaxies in our sample are low-metallicity dust-poor dwarfs (see Haurberg et al. 2015 for details), and so we expect and assume negligible internal dust attenuation. While we would prefer to use an energy balance approach with FUV and total infrared (TIR) emission to probe the dust-free luminosity (e.g., McQuinn et al. 2015b), our sources were not imaged at 24 μm or longer wavelengths by *Spitzer*. Even if we did have *Spitzer* MIPS imaging and were able to use this TIR+FUV flux method, it is likely that the extinction corrections derived in this way would be small; for example, the median A_{FUV} found by McQuinn et al. (2015b) for a sample of low-metallicity dwarf galaxies using this method was 0.76 mag.

Galactic extinction along the line of sight can be significant in the FUV and NUV. We applied the method of using the dust maps from Schlafly & Finkbeiner (2011) to account for the effects of Galactic extinction.²⁴ The extinction at FUV wavelengths is calculated using the following prescription from Wyder et al. (2007):

$$A_{\text{FUV}} = 8.24 \times E(B - V). \quad (3)$$

The ultraviolet extinction values for the sample members were all below 1 mag and are included in Table 1. After correcting the measured FUV magnitudes for Galactic extinction, we converted to FUV luminosities using standard prescriptions and the TRGB distances in Table 1.

Other issues affecting the data were minor. AGC 111946 resides less than 200'' from the edge of the frame in both the FUV and NUV so vignetting is significant. Although the background subtraction performed on this image via the *GALEX* pipeline is adequate, our background subtraction uncertainty still increased to account for the vignetting. For the FUV observation of AGC 174585, the pipeline background subtraction was unsatisfactory due to a bright foreground source in the northwest corner of the image, and so a manual background subtraction was performed using an average sky

²³ http://asd.gsfc.nasa.gov/archive/galex/FAQ/counts_background.html

²⁴ <http://irsa.ipac.caltech.edu/applications/DUST/>

Table 3
SHIELD Star Formation Properties

Galaxy ID (1)	$\log L_{\text{FUV}}$ ($\text{erg s}^{-1} \text{Hz}^{-1}$) (2)	$\log L_{\text{H}\alpha}$ (erg s^{-1}) (3)	$\log \text{SFR}_{\text{FUV}}$ ($M_{\odot} \text{yr}^{-1}$) (4)	$\log \text{SFR}_{\text{H}\alpha}$ ($M_{\odot} \text{yr}^{-1}$) (5)	$\frac{\text{SFR}_{\text{H}\alpha}}{\text{SFR}_{\text{FUV}}}$ (6)	$\log \text{SFR}_{200 \text{ Myr}}$ ($M_{\odot} \text{yr}^{-1}$) (7)
AGC 110482	25.15 ± 0.04	38.43 ± 0.04	-2.54 ± 0.15	-2.67 ± 0.04	0.74 ± 0.10	$-2.27^{+0.15}_{-0.23}$
AGC 111164	24.40 ± 0.05	37.70 ± 0.05	-3.29 ± 0.15	-3.40 ± 0.05	0.77 ± 0.13	$-3.28^{+0.16}_{-0.49}$
AGC 111946	24.91 ± 0.06	38.00 ± 0.07	-2.78 ± 0.15	-3.10 ± 0.07	0.48 ± 0.16	$-2.46^{+0.17}_{-0.40}$
AGC 111977	24.94 ± 0.04	38.04 ± 0.08	-2.75 ± 0.15	-3.06 ± 0.08	0.49 ± 0.09	$-2.59^{+0.18}_{-0.24}$
AGC 112521	24.15 ± 0.09	37.00 ± 0.08	-3.54 ± 0.16	-4.10 ± 0.08	0.28 ± 0.07	$-3.44^{+0.41}$
AGC 174585	24.78 ± 0.05	37.89 ± 0.05	-2.91 ± 0.15	-3.21 ± 0.05	0.50 ± 0.08	$-2.64^{+0.18}_{-0.36}$
AGC 174605	25.06 ± 0.14	37.91 ± 0.04	-2.63 ± 0.19	-3.19 ± 0.04	0.28 ± 0.11	$-2.37^{+0.14}_{-0.38}$
AGC 182595	24.98 ± 0.05	38.45 ± 0.07	-2.71 ± 0.15	-2.65 ± 0.07	1.15 ± 0.22	$-2.32^{+0.21}_{-0.12}$
AGC 731457	25.60 ± 0.03	38.58 ± 0.07	-2.09 ± 0.15	-2.52 ± 0.07	0.37 ± 0.06	$-1.85^{+0.37}_{-0.37}$
AGC 748778	24.43 ± 0.07	$<36.18^{\text{b}}$	-3.26 ± 0.15	$<-4.92^{\text{b}}$	0.02 ± 0.003	$-3.17^{+0.14}_{-0.25}$
AGC 749237	$25.65^{\text{a}} \pm 0.03$	38.76 ± 0.05	-2.05 ± 0.15	-2.34 ± 0.05	0.51 ± 0.07	$-1.89^{+0.19}_{-0.16}$
AGC 749241	24.33 ± 0.06	$<36.10^{\text{b}}$	-3.36 ± 0.15	$<-5.00^{\text{b}}$	0.02 ± 0.003	$-3.49^{+0.10}$

Notes. Column 1—Galaxy name. Columns 2—FUV luminosity. Column 3— $\text{H}\alpha$ luminosity from Haurberg (2013). Column 4—FUV SFR derived using Equation (4). Column 5— $\text{H}\alpha$ SFR derived using Equation (5). Column 6—Ratio of $\text{SFR}_{\text{H}\alpha}$ to SFR_{FUV} . Column 7—SFR over the last ~ 200 Myr derived from *HST* CMDs in McQuinn et al. (2015a).

^a Estimated from NUV luminosity.

^b Upper limit.

Table 4
SHIELD Star Formation Properties (Continued)

Galaxy ID (1)	$\log(\Sigma_{\text{SFR}_{\text{FUV}}})$ ($M_{\odot} \text{yr}^{-1} \text{kpc}^{-2}$) (2)	$\log(\Sigma_{\text{H I}})$ ($M_{\odot} \text{pc}^{-2}$) (3)	$\log(\text{SFE})$ (yr^{-1}) (4)	GCT (Method 1) ($\times 10^9$ years) (5)	GCT (Method 2) ($\times 10^9$ years) (6)
AGC 110482	-2.75 ± 0.16	0.65 ± 0.07	-9.40 ± 0.33	3 ± 1	6.6 ± 3.5
AGC 111164	-3.13 ± 0.16	0.21 ± 0.07	-9.33 ± 0.33	2 ± 1	7.9 ± 4.2
AGC 111946	-2.99 ± 0.16	0.50 ± 0.07	-9.49 ± 0.31	3 ± 1	8.9 ± 4.7
AGC 111977	-2.61 ± 0.16	0.43 ± 0.07	-9.03 ± 0.33	1 ± 1	4.0 ± 2.1
AGC 112521	-3.48 ± 0.17	0.67 ± 0.07	-10.14 ± 0.30	1 ± 7	45 ± 12
AGC 174585	-2.97 ± 0.16	0.19 ± 0.07	-9.16 ± 0.32	1 ± 1	6.5 ± 3.4
AGC 174605	-3.27 ± 0.20	0.32 ± 0.07	-9.59 ± 0.22	4 ± 2	7.9 ± 5.3
AGC 182595	-2.91 ± 0.16	0.37 ± 0.13	-9.28 ± 0.70	2 ± 1	5.1 ± 2.7
AGC 731457	-2.54 ± 0.16	0.50 ± 0.07	-9.04 ± 0.26	1 ± 1	2.2 ± 1.2
AGC 748778	-3.28 ± 0.16	-0.10 ± 0.07	-9.18 ± 0.31	2 ± 1	8.5 ± 4.5
AGC 749237	-2.76 ± 0.16	0.74 ± 0.07	-9.50 ± 0.33	3 ± 1	6.5 ± 3.4
AGC 749241	-3.31 ± 0.16	0.13 ± 0.07	-9.44 ± 0.32	3 ± 1	13 ± 6.9

Note. Column 1—Galaxy name. Column 2— SFR_{FUV} surface density. Column 3— H I surface density. Column 4—SFE found by dividing the $\Sigma_{\text{SFR}_{\text{FUV}}}$ by the $\Sigma_{\text{H I}}$ (and accounting for the change from kpc^2 to pc^2 for the $\Sigma_{\text{SFR}_{\text{FUV}}}$). Column 5—Gas consumption time (GCT) derived from the inverse of the SFE. The weighted average for the sample is $\sim 2 \times 10^9$ years. Column 6—Gas consumption time (GCT) derived by dividing the total H I mass of the galaxy by its total SFR_{FUV} (these values can be found in Table 1, Column 7 and Table 3, Column 4, respectively). The weighted average for the sample is $\sim 10.2 \times 10^9$ years.

value from a region in the image that was unaffected by the contaminating source.

2.2.3. WIYN 3.5 m Data Products

Ground-based optical images were obtained using the Mini-Mosaic Imager on the WIYN 3.5 m telescope at Kitt Peak National Observatory (KPNO). The observations were performed over four nights: 2010 October 7–8 and 2011 March 29–30. The Fall 2010 nights had good seeing ($\approx 0''.5$) and were done under photometric conditions; the Spring 2011 nights had degraded seeing ($\approx 1''.2$) and the conditions were not photometric. All sources were observed in four separate filters:

broadband Johnson B, V, and R, and narrowband W036 $\text{H}\alpha$ (FWHM = 60 Å). Exposure times for the Fall images were 900, 720, 600, and 900 s for the B, V, R, and $\text{H}\alpha$. The Spring images were 1200, 720, 900, and 1200 s exposures. Our treatment of the data used standard prescriptions in IRAF.²⁵ A complete description of the WIYN 3.5 m data sets and imaging procedures can be found in Haurberg (2013) and N. Haurberg et al. (2016, in preparation). Note that AGC 748778 and AGC 749241 are non-detections in $\text{H}\alpha$, and the latter is a non-

²⁵ IRAF is distributed by the National Optical Astronomy Observatory, which is operated by the Association of Universities for Research in Astronomy (AURA) under a cooperative agreement with the National Science Foundation.

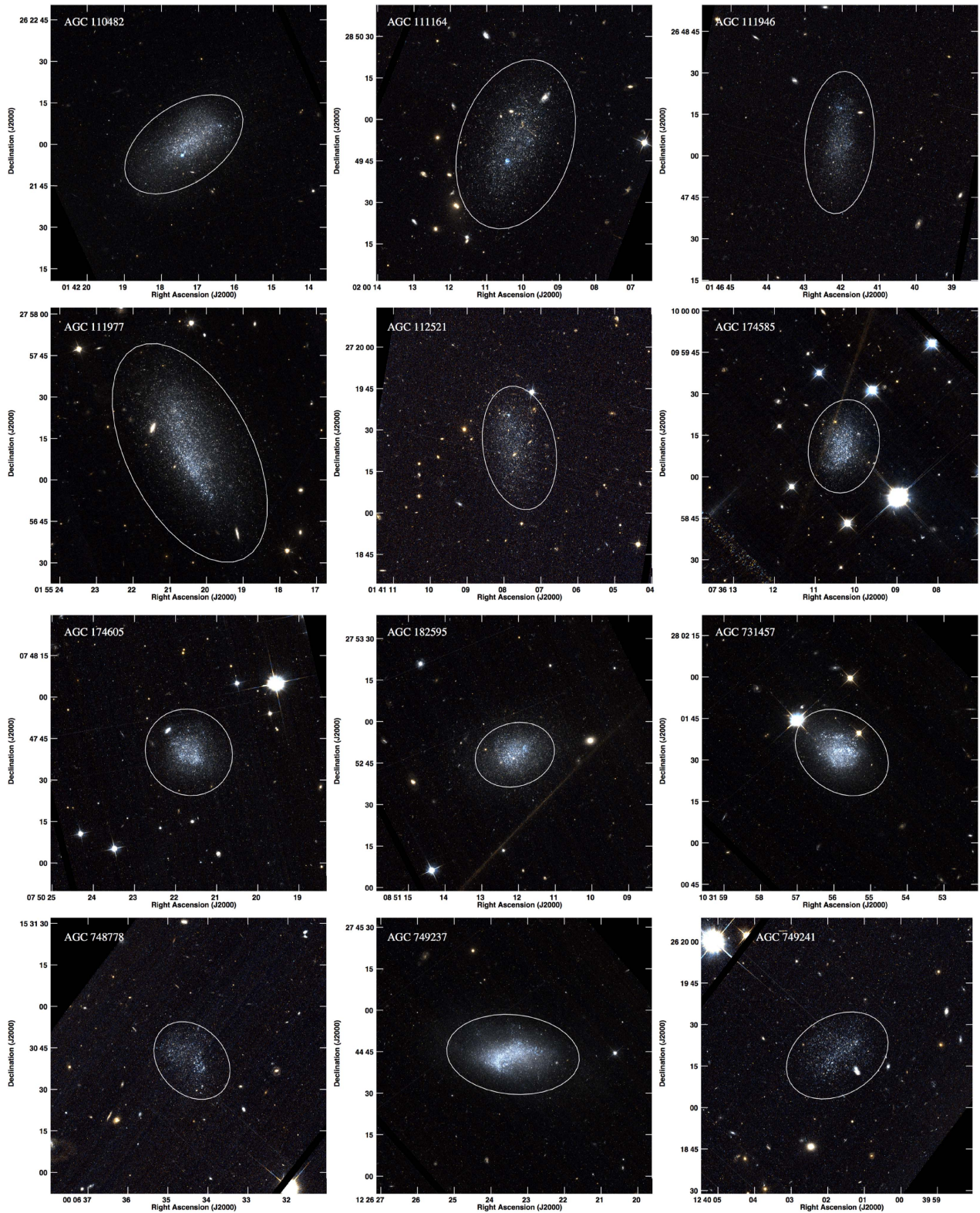


Figure 1. *HST* three-color images of the SHIELD galaxies; these images are reproductions of those in McQuinn et al. (2014). Overlaid on each panel is a single elliptical aperture to demonstrate the position and orientation of the elliptical apertures that were used in surface brightness analysis.

detection in the *Spitzer* images as well. In Table 3 we include the final $H\alpha$ luminosities for all sample members; related quantities are presented in Table 4. $H\alpha$ SFRs have uncertainties that include both the distance and photometric errors.

2.2.4. *HST* Data Products

Imaging of the 12 SHIELD galaxies was obtained for program GO-12658 (P.I. Cannon). The *HST* observations were conducted with the Advanced Camera for Surveys

(ACS). The F606W and F814W filters were used, with average total exposure times of 1000 s and 1200 s, respectively. Final three-color images were produced by creating a third “green” image, which is the linear average of the blue and red images; Figure 1 contains these final images. A complete description of the data handling and analysis is given in McQuinn et al. (2014); this paper also derives the distances of the SHIELD galaxies shown in Table 1. Further analysis of the recent SF histories of the SHIELD galaxies, as well as a discussion of the birthrate parameter ($b = \text{SFR}_{\text{recent}}/\text{SFR}_{\text{lifetime}}$) in the context of distance to neighboring systems, are given in McQuinn et al. (2015a). A discussion of the uncertainty in the TRGB distances, which are involved in many calculations and are propagated through in quadrature, may be found in McQuinn et al. (2014).

2.2.5. *Spitzer Space Telescope Data Products*

Observations of the SHIELD galaxies with *Spitzer* were acquired in 2011–2012 for program GO-80222 (P.I. Cannon). Near-infrared images at 3.6 and 4.5 μm were acquired with the InfraRed Array Camera (IRAC) operating during the “warm phase” (Fazio et al. 2004; Werner et al. 2004). The average exposure time was 96 s before mosaicking. Data were acquired from the *Spitzer* Heritage Archive²⁶ and corrected for the effects of column pull-down from bright, saturated foreground objects using the IRAC instrument team software.²⁷ The Mosaicker and Point Source Extractor (MOPEX²⁸) was then employed to produce flux-calibrated, artifact-corrected, mosaicked science images for each galaxy in each filter (Marshall 2013). In this paper, the *Spitzer* images are included both for completeness and for straightforward visual comparison of the locations of the old stellar populations of the systems (seen in 3.6 μm in Figures 2–13) to the younger gaseous and stellar regions imaged with other telescopes. Haurberg (2013) used the *Spitzer* data to derive stellar masses of the SHIELD systems; the companion paper to this work, McNichols et al. (2016), shows the 4.5 μm images.

2.3. *Photometric Measurements*

Since the SHIELD galaxies have highly irregular morphologies, determinations of basic galaxy parameters such as inclination are non-trivial. Thus, we derived parameters for photometric analysis using the custom IDL²⁹ program CLEAN GALAXY (Hagen et al. 2014), which fits surface brightness contours as a function of galactocentric radius to the *HST* F606W images of each source. The position angles, ellipticities, semimajor axes, and inclinations derived for the ellipses are included in Table 5. A representative ellipse is overlaid on each of the *HST* three-color images in Figure 1. Dependent values in the plots and tables of this paper are corrected for inclination effects following the prescriptions described in Haurberg (2013).

²⁶ <http://sha.ipac.caltech.edu/applications/Spitzer/SHA>

²⁷ Written by M. Ashby and J. Hora of the IRAC instrument team and available at <http://irsa.ipac.caltech.edu/data/SPITZER/docs/dataanalysis/tools/contributed/irac/fixpulldown/>.

²⁸ <http://irsa.ipac.caltech.edu/data/SPITZER/docs/dataanalysis/tools/mopex/>

²⁹ Interactive Data Language, <http://idlastro.gsfc.nasa.gov>.

In Figures 2 through 13, we show a six-panel mosaic for each SHIELD galaxy. Panel (a) shows the H I image used in our SF analysis in grayscale (created using the robust-weighted, spectrally smoothed data products described in Section 2.2.1) and with column density contours overlaid to demonstrate dynamic range. The same contours are shown on all remaining panels: (b) shows a grayscale representation of the *HST* F606W image; (c) shows the WIYN 3.5 m B-band image; (d) shows the *Spitzer* 3.6 μm image; (e) shows the WIYN 3.5 m continuum-subtracted H α image; and (f) shows the *GALEX* FUV image. All images are regridded to the *HST* image pixel scale and orientation. Note that all *Spitzer* images are shown with identified foreground and background objects removed, except for AGC 749241, which is a non-detection. These mosaics facilitate an important visual assessment of the degree to which the gas in these galaxies correlates with regions of ongoing SF. The FUV and H α regions are sometimes co-spatial with the H I knots (e.g., AGC 110482, AGC 111946), but some systems show the opposite: SF regions appear where H I minima occur (e.g., AGC 111977, AGC 749241). An in-depth discussion of the situation for each individual galaxy follows in Section 4.1.

In order to compare photometric measurements at multiple wavelengths, the images must be registered to the same coordinate grid. For the surface brightness profile analysis, we preserved the original pixel scale of the individual images in order to faithfully represent the fluxes contained within the elliptical annuli. The final images (Figures 2–13) were regridded to the *HST* fields using the MIRIAD³⁰ task REGRID. For the pixel correlation procedures discussed in Section 4, the FUV data were smoothed with a Gaussian kernel equal to the size of the restoring beam in the H I maps and then regridded to those H I maps. Radial profiles were produced by integrating over concentric elliptical annuli in the resulting H I, H α , and FUV images.

3. STAR FORMATION RATES

Observations of the SHIELD sources in the far-ultraviolet (FUV) continuum and in the H α emission line provide constraints on the SFRs of the galaxies. Both of these tracers are attributable to the formation of young stars (Kennicutt 1998a). FUV radiation has been used as a tracer of spatially and temporally extended SF, revealing populations of relatively young stars (lifetimes $\sim 10^8$ years, masses $> 6 M_{\odot}$; e.g., Salim et al. 2007). Note that usage of any FUV-scaling relation to infer an SFR assumes that SF has been constant over a ~ 100 Myr timescale. Near-ultraviolet (NUV) emission is also occasionally converted to an SFR, although FUV is generally preferred over NUV: (1) NUV images are more contaminated by foreground stellar sources than FUV images; (2) the NUV emission is generally less reliable for tracing the recent SF since the flux at the redder NUV wavelengths will have a greater contribution from stars with lifetimes $> 10^8$ years (Lee et al. 2009).

While the ultraviolet continuum probes SF over the most recent ~ 100 Myr, H α line emission provides an almost instantaneous snapshot of the formation of massive stars. Since only stars more massive than $\sim 17 M_{\odot}$ can produce significant numbers of photons capable of ionizing neutral hydrogen (Lee et al. 2009), and these stars have very short main sequence

³⁰ <http://bima.astro.umd.edu/miriad/>

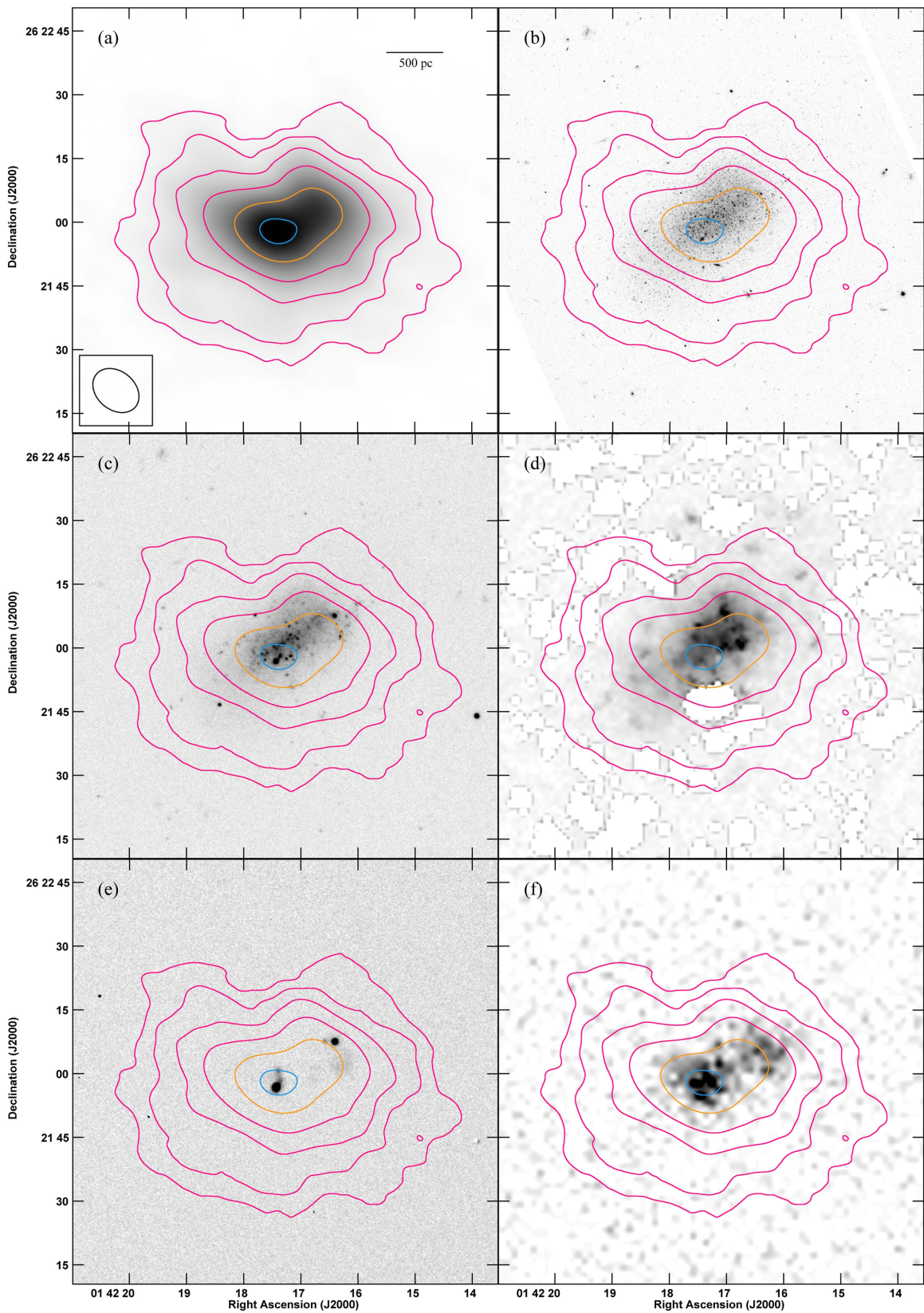


Figure 2. AGC 110482 in VLA H I (a), *HST* F606W (b), KPNO WIYN 3.5 m B-band (c), *Spitzer* 3.6 μm (d), KPNO WIYN 3.5 m continuum-subtracted $\text{H}\alpha$ (e), and *GALEX* FUV (f). The H I column density contours, in units of 10^{20} cm^{-2} , are overlaid at levels of (0.6125, 1.25, 2.5, 5, 10, 16). The two highest contour levels are highlighted in orange ($10 \times 10^{20} \text{ cm}^{-2}$) and blue ($16 \times 10^{20} \text{ cm}^{-2}$). The beam size of $11''.98 \times 9''.04$ is shown in panel (a); the H I images are created using the robust-weighted, spectrally averaged data as discussed in Section 2.2.1.

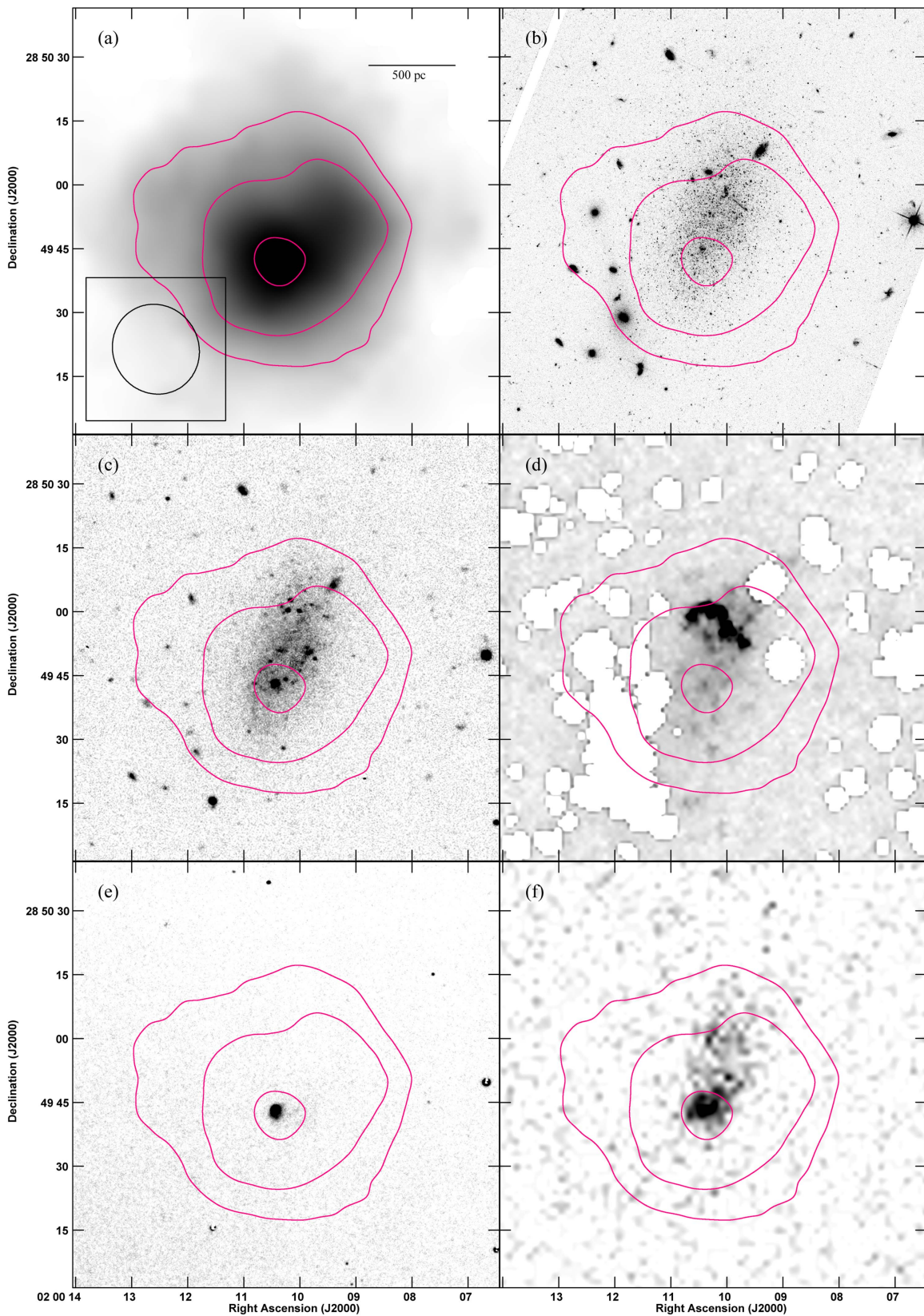


Figure 3. AGC 111164 in VLA H I (a), *HST* F606W (b), KPNO WIYN 3.5 m B-band (c), *Spitzer* 3.6 μm (d), KPNO WIYN 3.5 m continuum-subtracted $\text{H}\alpha$ (e), and *GALEX* FUV (f). The H I column density contours, in units of 10^{20} cm^{-2} , are overlaid at levels of (0.7, 1.4, 2.8). The beam size of $21''.39 \times 20''.09$ is shown in panel (a); the H I images are created using the robust-weighted, spectrally averaged data as discussed in Section 2.2.1.

lifetimes, the presence of significant recombination line emission requires the presence of such short-lived stars. Due to this direct coupling between the nebular emission and

massive SF, various works have used $\text{H}\alpha$ emission to probe the ongoing SF in spiral and irregular galaxies (e.g., Kennicutt 1983, 1998a).

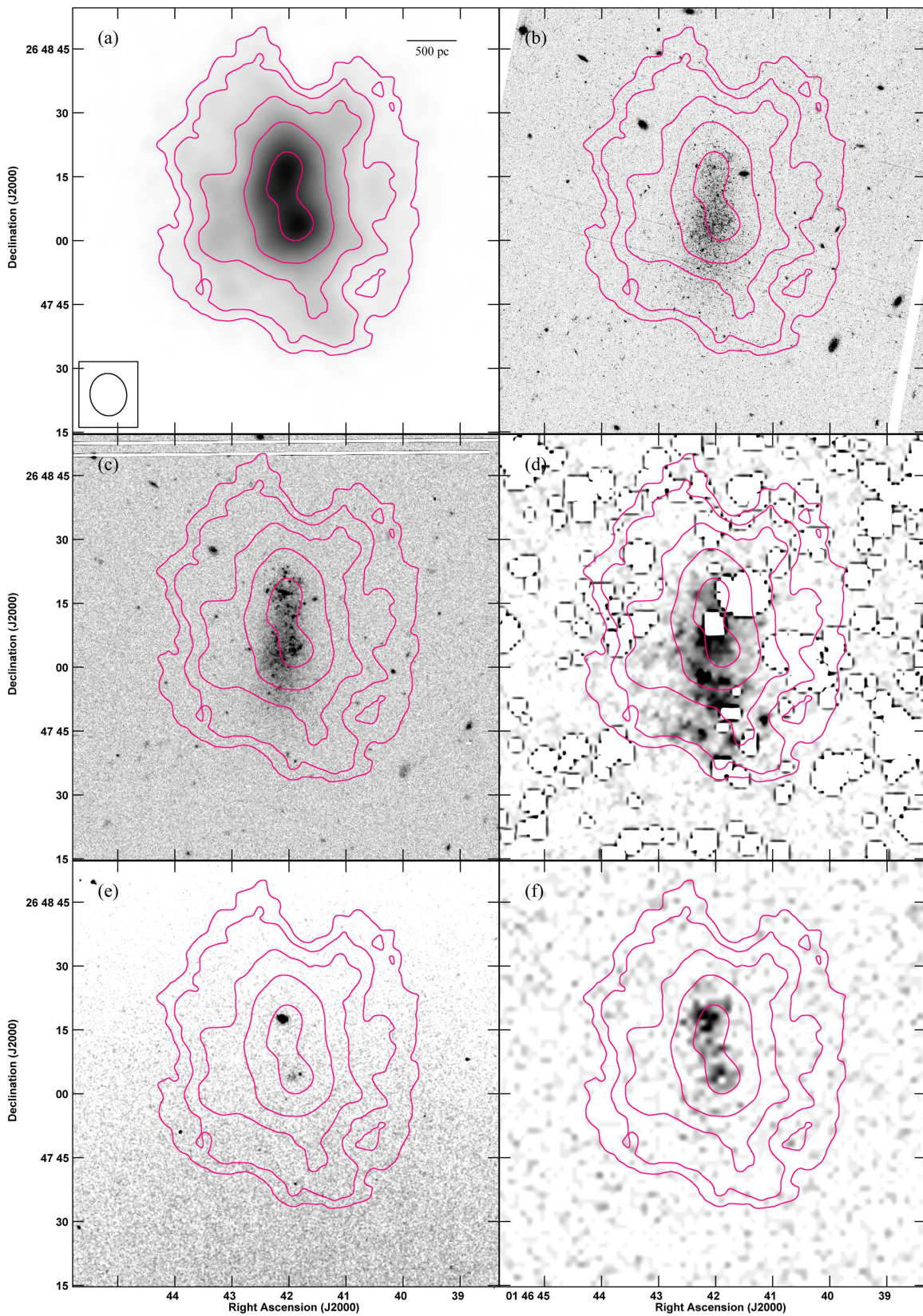


Figure 4. AGC 111946 in VLA H I (a), *HST* F606W (b), KPNO WIYN 3.5 m B-band (c), *Spitzer* 3.6 μm (d), KPNO WIYN 3.5 m continuum-subtracted H α (e), and *GALEX* FUV (f). The H I column density contours, in units of 10^{20} cm^{-2} , are overlaid at levels of (0.5, 1, 2, 4, 8). The beam size of $9''.97 \times 8''.59$ is shown in panel (a); the H I images are created using the robust-weighted, spectrally averaged data as discussed in Section 2.2.1.

Even though FUV and H α emission have different characteristic timescales, both SF indicators are expected to agree in systems with fully populated initial mass functions

(IMFs) and constant SFRs. Indeed, Lee et al. (2009) find a constant ratio of H α to FUV emission in systems with global SFRs larger than $\sim 0.1 M_{\odot} \text{ yr}^{-1}$. However, as the integrated

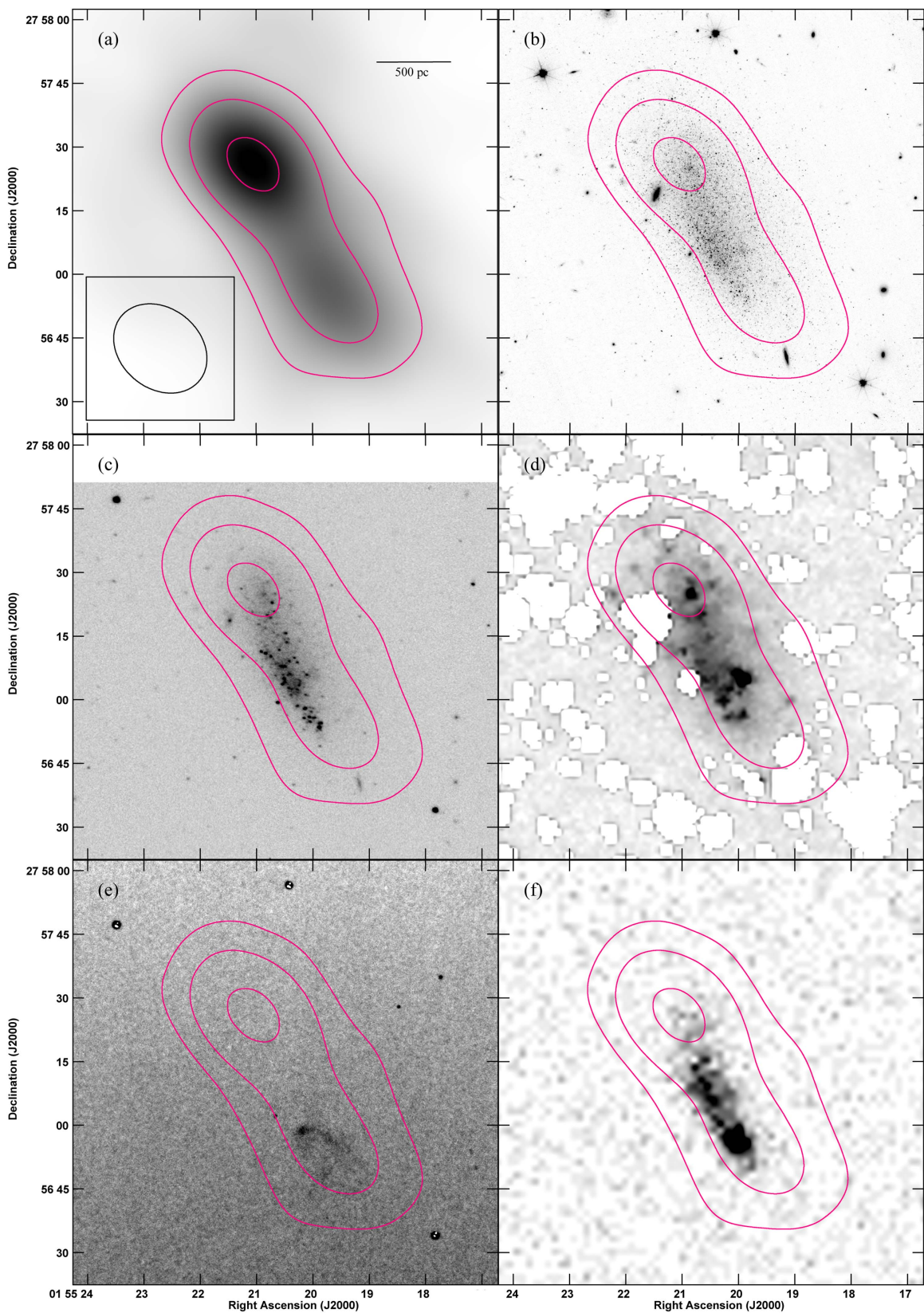


Figure 5. AGC 111977 in VLA H I (a), *HST* F606W (b), KPNO WIYN 3.5 m B-band (c), *Spitzer* 3.6 μm (d), KPNO WIYN 3.5 m continuum-subtracted $\text{H}\alpha$ (e), and *GALEX* FUV (f). The H I column density contours, in units of 10^{20} cm^{-2} , are overlaid at levels of (0.6125, 1.25, 2.5). The beam size of $23''84 \times 18''85$ is shown in panel (a); the H I images are created using the robust-weighted, spectrally averaged data as discussed in Section 2.2.1.

SFR falls, the $\text{H}\alpha$ -based SFR no longer tracks the FUV-based SFR. Possible reasons are numerous, including non-constant SF histories, stochasticity in the upper IMF, and leakage of

ionizing photons, among others (Lee et al. 2016). The SHIELD galaxies provide a unique perspective on this issue; as Figures 2–13 demonstrate, and as discussed below, some of

the SHIELD galaxies harbor only single H II regions. The effects of stochasticity are expected to be significant.

3.1. FUV SFRs

Many conversions from FUV luminosity to SFR exist in the literature. Most assume a fully populated IMF and/or a solar metallicity (Kennicutt 1998a; Salim et al. 2007; Hao et al. 2011; Kennicutt & Evans 2012). As discussed in Haurberg et al. (2015) and McQuinn et al. (2015a), both of these assumptions fail for the SHIELD galaxies. A preferable approach takes into account a varying and stochastically populated IMF. We thus apply the recent empirical calibration of McQuinn et al. (2015b), which is based on a randomly populated Salpeter IMF with mass limits between 0.1 and 120 M_{\odot} for low-metallicity dwarf galaxies with SFR_{FUV} between 10^{-3} and $10^{-1} M_{\odot} \text{ yr}^{-1}$:

$$\text{SFR}_{\text{FUV}} = 2.04 \pm 0.81 \times 10^{-28} \times L_{\text{FUV}}^0, \quad (4)$$

where SFR_{FUV} is in $M_{\odot} \text{ yr}^{-1}$ and L_{FUV}^0 is in $\text{erg s}^{-1} \text{ Hz}^{-1}$. This prescription yields somewhat higher SFR_{FUV} values (by $\sim 53\%$) than the other prescriptions in the works cited above. The final global FUV-derived SFRs are included in Table 3.

Note that no FUV data are available for AGC 749237, and so we have calculated an approximate value for the SFR_{FUV} based on its NUV emission. We empirically determined the correlation between the FUV and NUV counts per second for each galaxy and use the resulting line of best-fit equation to estimate what the FUV counts for AGC 749237 would be, given its observed NUV counts per second. We then correct for extinction and carry this through to a SFR_{FUV} .

In Figure 14 we plot the total H I mass versus the FUV-based SFR for the SHIELD galaxies and for the members of other nearby galaxy surveys. Note that we did not revise the methods used to calculate SFR_{FUV} for the galaxies in the other surveys; the scatter in SFR_{FUV} may be larger as a result. This figure demonstrates that the observed SFR_{FUV} of our sample members is comparable to members of some of the other low-mass dwarf galaxy surveys. As expected, there is a correlation between the total M_{HI} of the systems and the SFR_{FUV} . Treating each survey's sample of galaxies independently, the plot also fits a linear regression to each group; the SHIELD and FIGGS galaxies, selected in similar ways (i.e., had to meet H I line width criteria), show the closest agreement in slope. Note that except for a small fraction of the LITTLE-THINGS galaxies, all systems that have $\log(M_{\text{HI}}) \lesssim 7.5 M_{\odot}$ have $\log(\text{SFR}_{\text{FUV}}) \lesssim -2.0 M_{\odot} \text{ yr}^{-1}$.

In Figure 15 we treat all of the galaxy surveys uniformly and fit the composite sample with a single linear regression. When no error bars for archival data were available, we assumed a 10% uncertainty on either variable. The slope of the resulting line is 0.88 ± 0.01 ; if the more massive THINGS galaxies (Walter et al. 2008) are excluded the slope becomes slightly shallower (0.85 ± 0.01). We note that these formal uncertainties are likely underestimates, due to the different SFR metrics used by different comparison studies. With this caveat in mind, from Figure 15 we conclude that the H I mass and UV-based SFR are strongly correlated; the SFE is essentially constant over five orders of magnitude.

3.2. H α SFRs

The most widely used conversion from H α luminosity to an instantaneous SFR is given by Kennicutt (1998a):

$$\text{SFR}_{\text{H}\alpha} = L_{\text{H}\alpha} / (1.26 \times 10^{41}), \quad (5)$$

where the $\text{SFR}_{\text{H}\alpha}$ is the H α -based SFR in units of $M_{\odot} \text{ yr}^{-1}$ and $L_{\text{H}\alpha}$ is the H α luminosity in units of erg s^{-1} . This prescription assumes a fully populated Salpeter IMF (i.e., there is a sufficient number of stars throughout the entire mass range, in this case 0–100 M_{\odot}). Based on the very low FUV-based SFRs, stochasticity in the upper IMF (the high-mass star regime) is expected to be significant in the SHIELD galaxies. However, in the absence of an alternative calibration of H α luminosities into SFRs in the extreme low SFR regime, we adopt the Kennicutt (1998a) calibration for purposes of direct comparison. The global $\text{SFR}_{\text{H}\alpha}$ for the SHIELD galaxies are included in Table 3. Note that AGC 748778 and AGC 749241 are H α non-detections, and so we provide upper limits for the H α -based SFR. The range of $\text{SFR}_{\text{H}\alpha}$ of the sample is $10^{-2.34} M_{\odot} \text{ yr}^{-1}$ (AGC 749237) to $10^{-4.10} M_{\odot} \text{ yr}^{-1}$ (AGC 112521).

3.3. Comparison of H α and FUV SFRs

In Figure 16 we plot $\text{SFR}_{\text{H}\alpha}$ as a function of SFR_{FUV} for the SHIELD galaxies and for comparison samples drawn from the 11HUGS (Lee et al. 2009), LITTLE-THINGS (Hunter et al. 2012), and FIGGS (Roychowdhury et al. 2014) samples. The overall trend of increasing scatter at decreasing SFR is apparent in all survey samples. The SHIELD galaxies are some of the most extremely low-SFR galaxies in these surveys.

In addition to increased scatter at the faint end of Figure 16, the $\text{SFR}_{\text{H}\alpha}/\text{SFR}_{\text{FUV}}$ ratio becomes progressively smaller as a function of decreasing SFR. This trend is demonstrated clearly in Table 3 and Figure 17, where the same samples of galaxies are shown in the $\text{SFR}_{\text{H}\alpha}/\text{SFR}_{\text{FUV}}$ versus $\text{SFR}_{\text{H}\alpha}$ plane. The most quiescent systems detected in H α are also the most quiescent systems detected in the FUV. As seen in multiple previous works, the decreased H α luminosity relative to FUV is an expected effect of stochasticity at the upper end of the IMF in the low SF regime (Bell & Kennicutt 2001; Salim et al. 2007; Lee et al. 2009). Meurer et al. (2009), Lee et al. (2009), and Boselli et al. (2009) all noted discrepancies between UV and H α SFRs in the sense that H α SFRs are systematically lower with decreasing galaxy luminosity. This was originally interpreted as potentially due to a change in the upper IMF with decreasing galaxy mass/metallicity. However, Fumagalli et al. (2011), da Silva et al. (2012), and Eldridge (2012) all showed that the observed trend could be explained by a stochastically sampled cluster and stellar mass function scenario. Weisz et al. (2012) demonstrated that the observed trend was a natural result of fluctuating SF rates—exactly what is seen in low-mass galaxies.

4. STAR FORMATION VERSUS H I IN SHIELD

We now examine the complex relationships between the spatial distribution of H I gas and the spatial distribution of the SF tracers. We perform this analysis using several different strategies, each of which is discussed in detail below.

First, and most simplistically, we visually inspect the images of each galaxy (Figures 2–13) at each of the

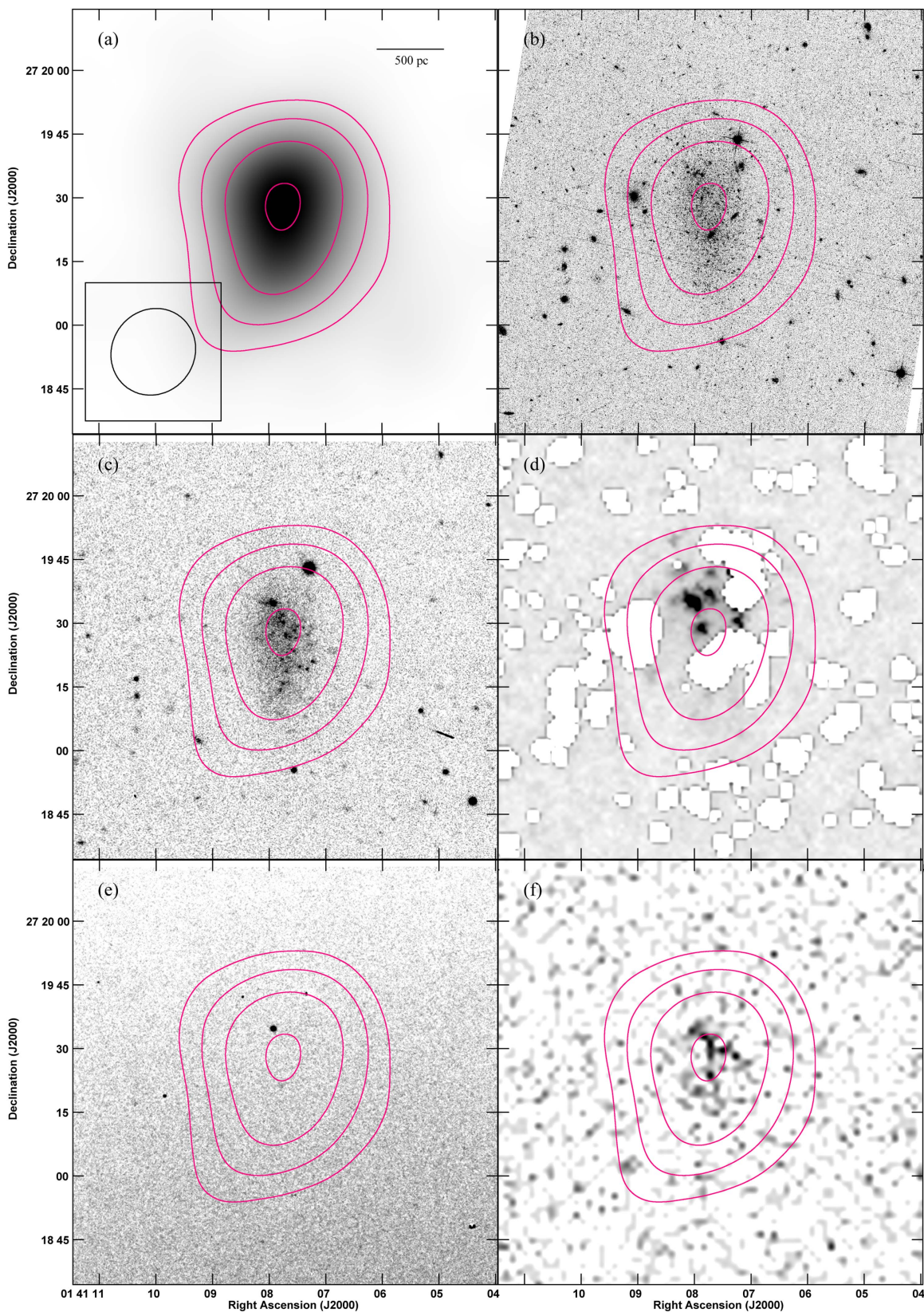


Figure 6. AGC 112521 in VLA H I (a), *HST* F606W (b), KPNO WIYN 3.5 m B-band (c), *Spitzer* 3.6 μm (d), KPNO WIYN 3.5 m continuum-subtracted $\text{H}\alpha$ (e), and *GALEX* FUV (f). The H I column density contours, in units of 10^{20} cm^{-2} , are overlaid at levels of (0.5625, 1.125, 2.25, 4.5). The beam size of $20''90 \times 19''43$ is shown in panel (a); the H I images are created using the robust-weighted, spectrally averaged data as discussed in Section 2.2.1.

wavelengths available. Analyzing the morphology of the galaxies allows us to identify parts of a system in which the H I gas and SF tracers are co-spatial, as well as areas in a

system which have elevated SF but are devoid of H I gas. It is also interesting to explore the reasons why this co-spatiality does or does not occur; the visual arrangement of the SF

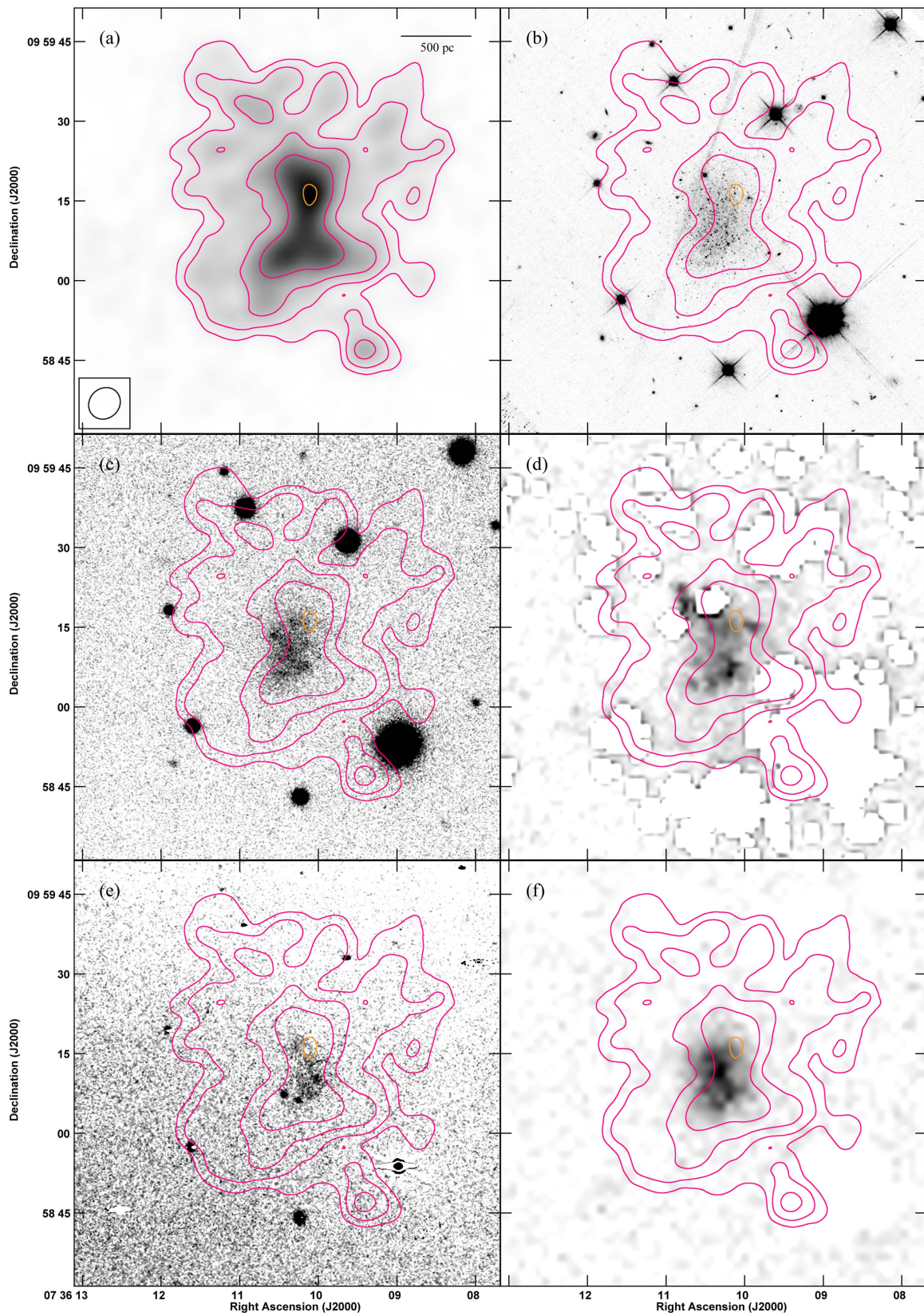


Figure 7. AGC 174585 in VLA H I (a), *HST* F606W (b), KPNO WIYN 3.5 m B-band (c), *Spitzer* 3.6 μm (d), KPNO WIYN 3.5 m continuum-subtracted H α (e), and *GALEX* FUV (f). The H I column density contours, in units of 10^{20} cm^{-2} , are overlaid at levels of (0.6125, 1.25, 2.5, 5, 10). The highest contour level is highlighted in orange ($10 \times 10^{20} \text{ cm}^{-2}$). The beam size of $6''.19 \times 5''.52$ is shown in panel (a); the H I images are created using the robust-weighted, spectrally averaged data as discussed in Section 2.2.1.

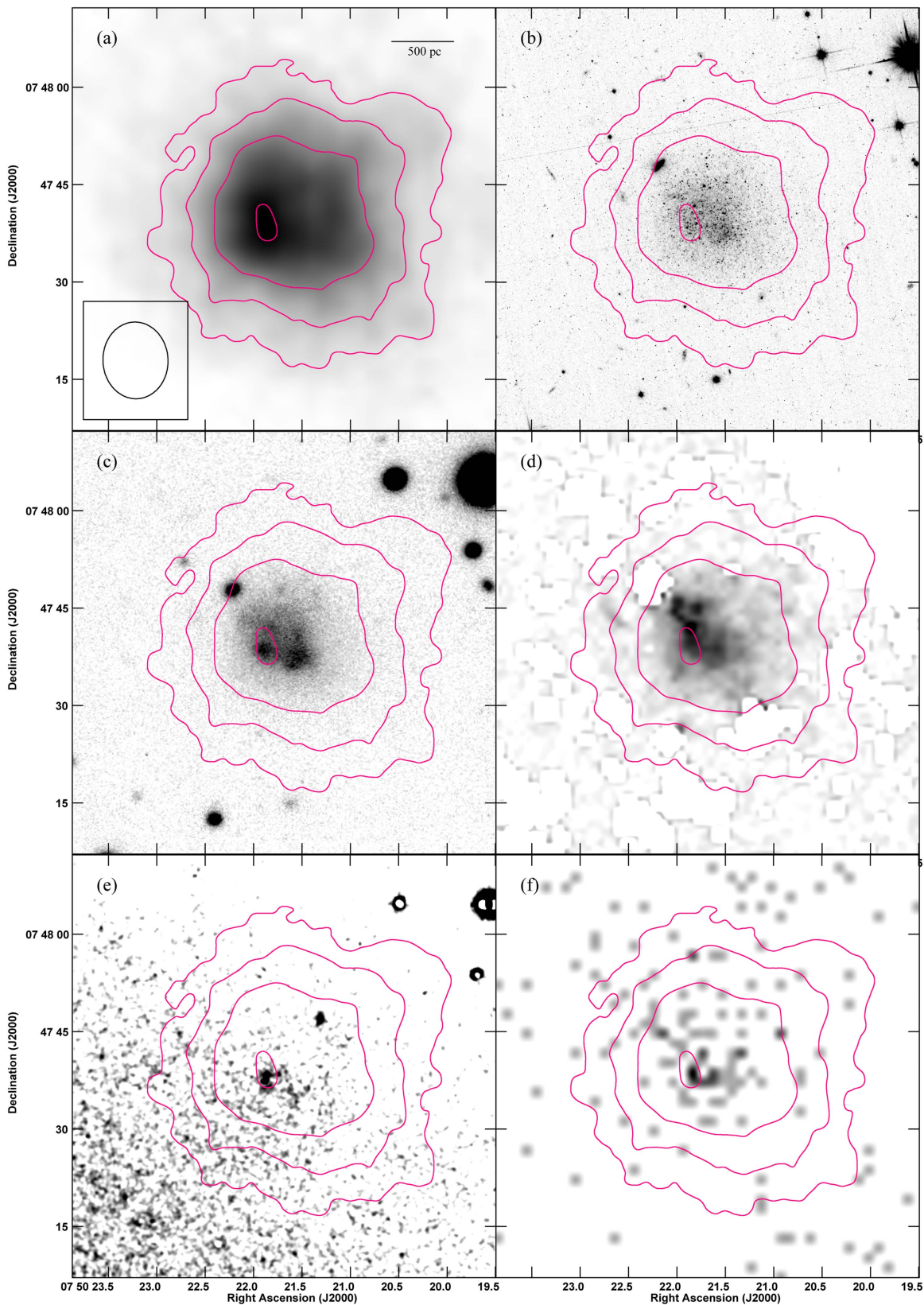


Figure 8. AGC 174605 in VLA H I (a), *HST* F606W (b), KPNO WIYN 3.5 m B-band (c), *Spitzer* 3.6 μm (d), KPNO WIYN 3.5 m continuum-subtracted $\text{H}\alpha$ (e), and *GALEX* FUV (f). The H I column density contours, in units of 10^{20} cm^{-2} , are overlaid at levels of (0.55, 1.1, 2.2, 4.4). The beam size of $11''.81 \times 9''.99$ is shown in panel (a); the H I images are created using the robust-weighted, spectrally averaged data as discussed in Section 2.2.1.

regions and gas within a galaxy can inform us about how much the SF events disrupt the gas and how long it takes for SF to clear out clumps of atomic gas.

Second, we calculate and examine radial profiles of the H I gas surface density ($\Sigma_{\text{H I}}$, units of $M_{\odot} \text{ pc}^{-2}$), the $\text{H}\alpha$ -based SFR surface density ($\Sigma_{\text{H}\alpha \text{ SFR}}$, units of $M_{\odot} \text{ yr}^{-1} \text{ kpc}^{-2}$), and the

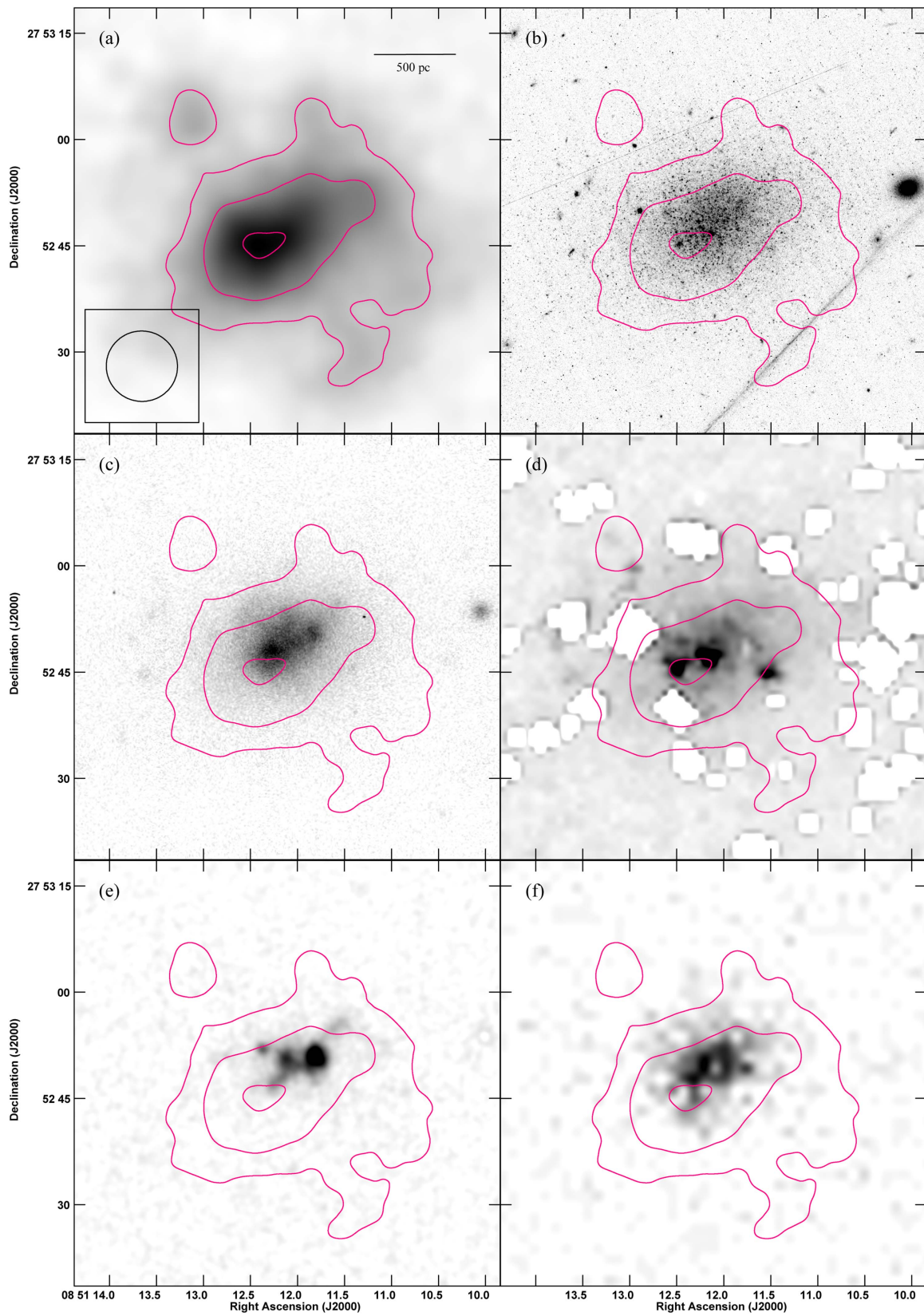


Figure 9. AGC 182595 in VLA H I (a), *HST* F606W (b), KPNO WIYN 3.5 m B-band (c), *Spitzer* 3.6 μm (d), KPNO WIYN 3.5 m continuum-subtracted H α (e), and *GALEX* FUV (f). The H I column density contours, in units of 10^{20} cm^{-2} , are overlaid at levels of (0.75, 1.5, 3). The beam size of $10''.05 \times 9''.93$ is shown in panel (a); the H I images are created using the robust-weighted, spectrally averaged data as discussed in Section 2.2.1.

FUV-based SFR surface density (Σ_{FUVSFR} , units of $M_{\odot} \text{ yr}^{-1} \text{ kpc}^{-2}$) as functions of radius within each galaxy. In order to be systematic and uniform, all profiles are centered on

the fitted center of the *HST* F606W images as determined by CLEANGALAXY (Hagen et al. 2014); these positions are the centers of the white ellipses shown in Figure 1. They are

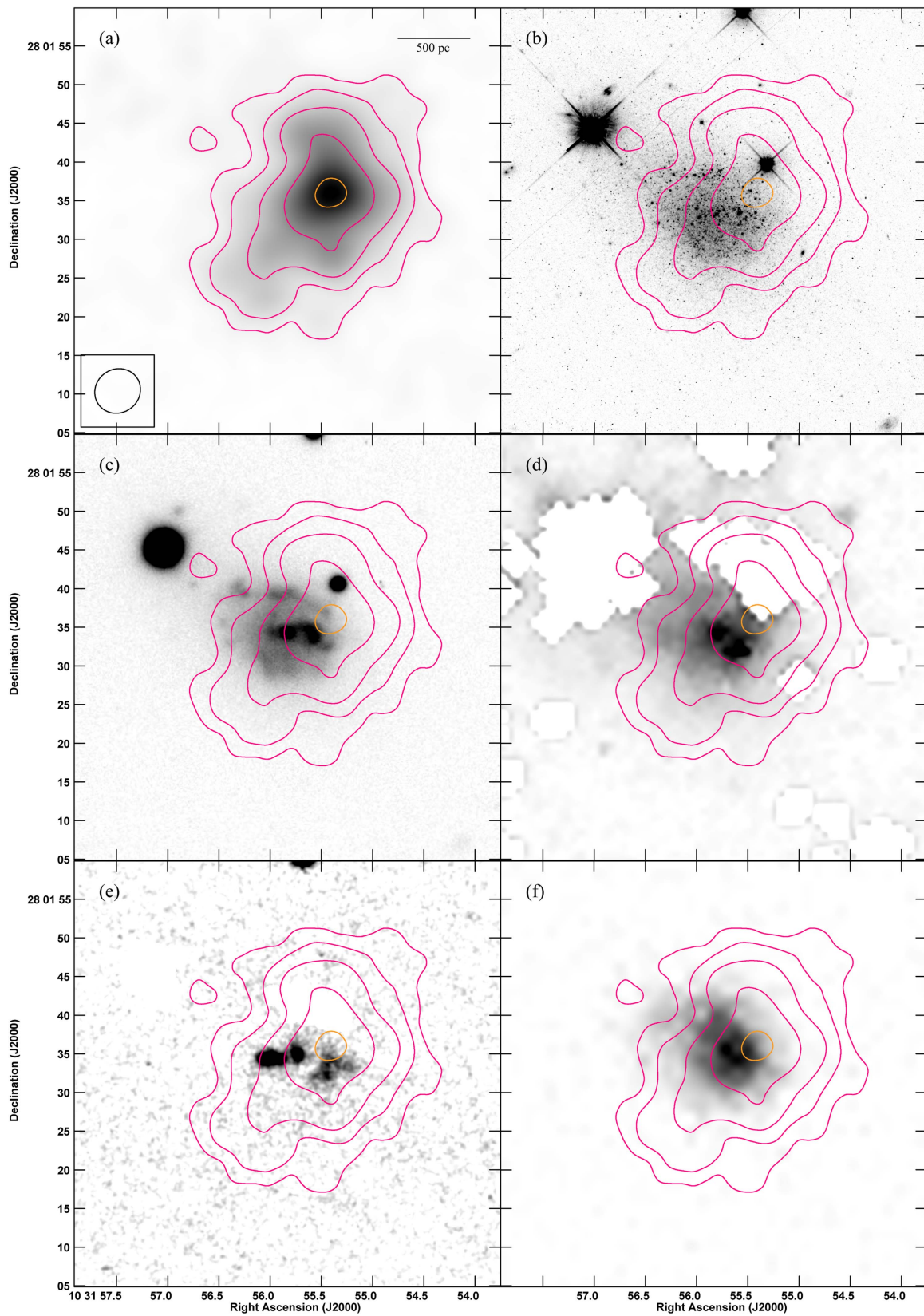


Figure 10. AGC 731457 in VLA H I (a), *HST* F606W (b), KPNO WIYN 3.5 m B-band (c), *Spitzer* 3.6 μm (d), KPNO WIYN 3.5 m continuum-subtracted H α (e), and *GALEX* FUV (f). The H I column density contours, in units of 10^{20} cm^{-2} , are overlaid at levels of (0.6125, 1.25, 2.5, 5, 10). The highest contour level is highlighted in orange ($10 \times 10^{20} \text{ cm}^{-2}$). The beam size of $6''.04 \times 5''.53$ is shown in panel (a); the H I images are created using the robust-weighted, spectrally averaged data as discussed in Section 2.2.1.

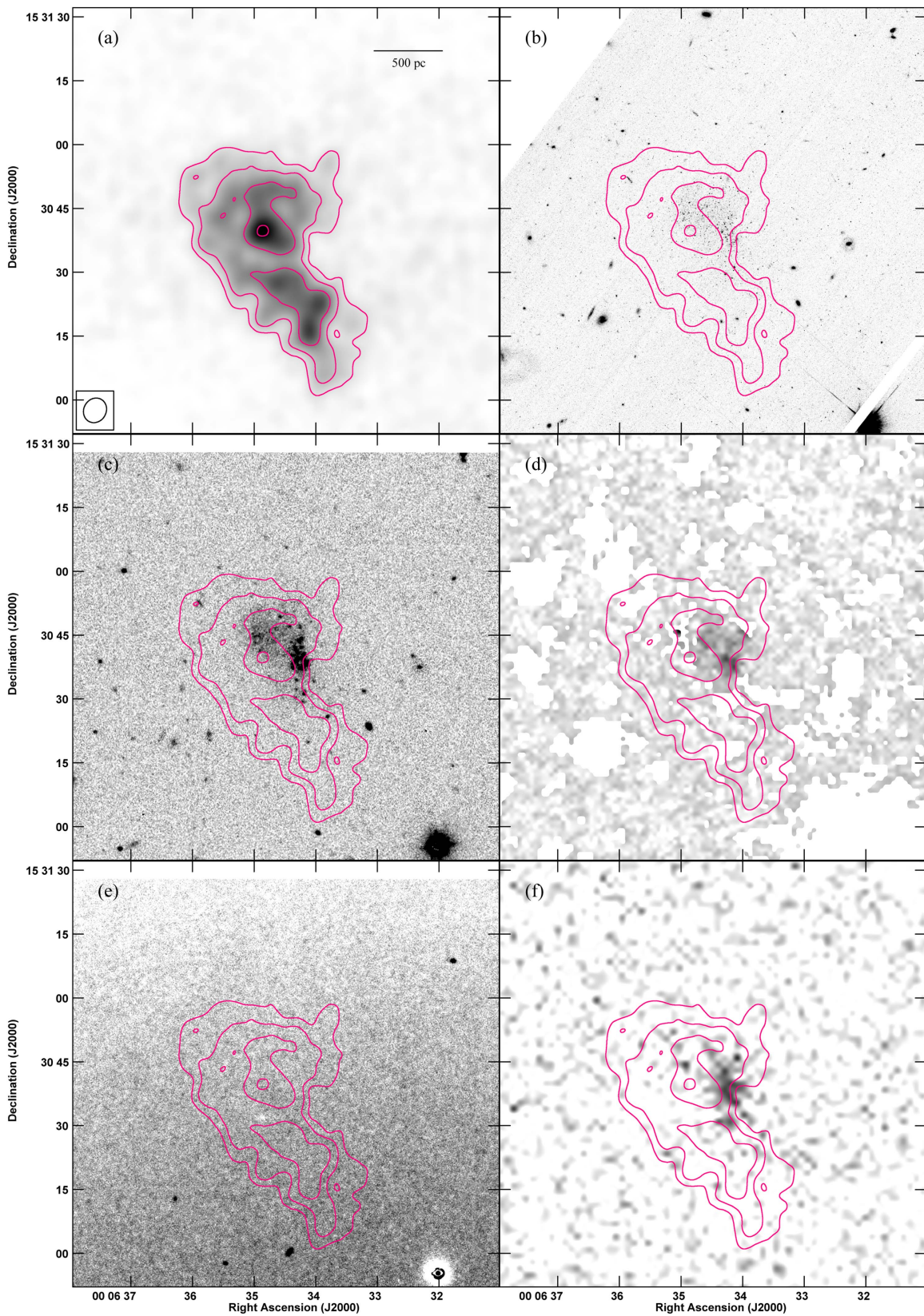


Figure 11. AGC 748778 in VLA H I (a), *HST* F606W (b), KPNO WIYN 3.5 m B-band (c), *Spitzer* 3.6 μm (d), KPNO WIYN 3.5 m continuum-subtracted H α (e), and *GALEX* FUV (f). The H I column density contours, in units of 10^{20} cm^{-2} , are overlaid at levels of (0.6875, 1.375, 2.75, 5.5). The beam size of $5''.91 \times 5''.23$ is shown in panel (a); the H I images are created using the robust-weighted, spectrally averaged data as discussed in Section 2.2.1.

presented as surface densities in concentric annuli, so the axes in these plots are radius (in kpc) and Σ_{SFR} or $\Sigma_{\text{H I}}$. Figure 18 shows these profiles for all 12 SHIELD galaxies. In general, the

H I profiles show smooth curves while the H α and FUV profiles are choppy and reach the level of noise at smaller radii. In some cases the variations seen in the H α curves are

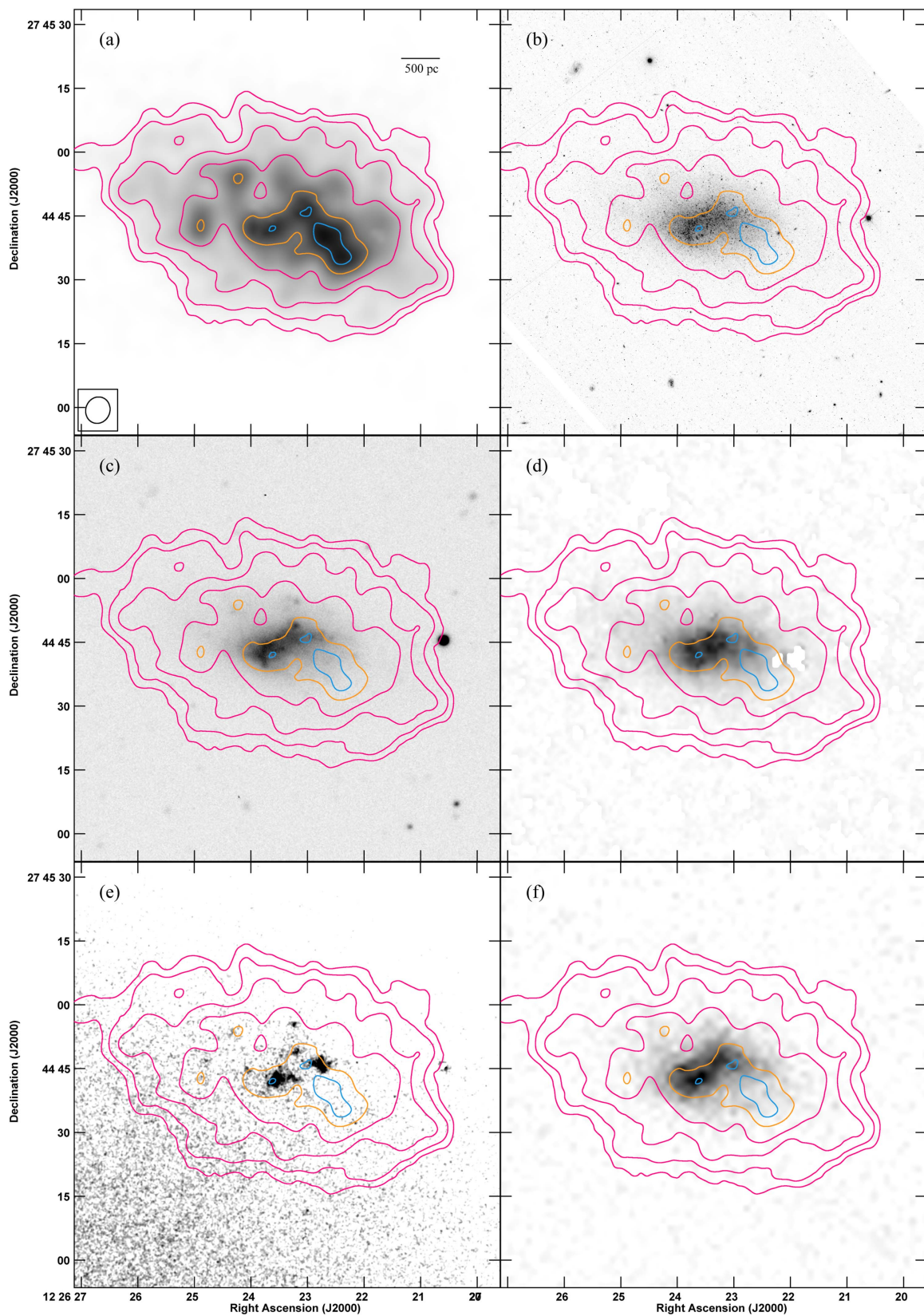


Figure 12. AGC 749237 in VLA H I (a), *HST* F606W (b), KPNO WIYN 3.5 m B-band (c), *Spitzer* 3.6 μm (d), KPNO WIYN 3.5 m continuum-subtracted H α (e), and *GALEX* FUV (f). The H I column density contours, in units of 10^{20} cm^{-2} , are overlaid at levels of (0.6125, 1.25, 2.5, 5, 10, 14). The two highest contour levels are highlighted in orange ($10 \times 10^{20} \text{ cm}^{-2}$) and blue ($14 \times 10^{20} \text{ cm}^{-2}$). The beam size of $6''.21 \times 5''.59$ is shown in panel (a); the H I images are created using the robust-weighted, spectrally averaged data as discussed in Section 2.2.1.

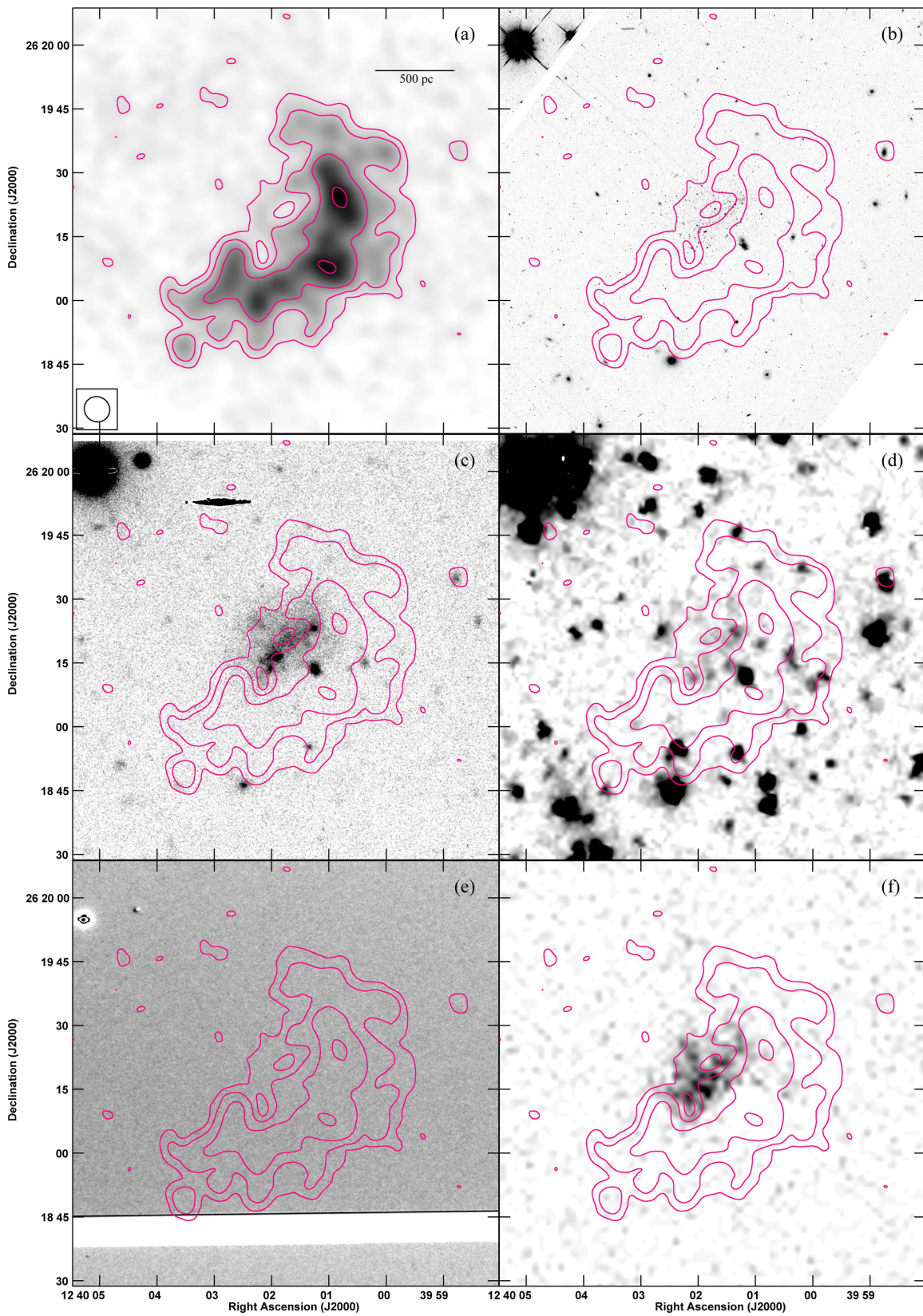


Figure 13. AGC 749241 in VLA H I (a), *HST* F606W (b), KPNO WIYN 3.5 m B-band (c), *Spitzer* 3.6 μm (d), KPNO WIYN 3.5 m continuum-subtracted H α (e), and *GALEX* FUV (f). The H I column density contours, in units of 10^{20} cm^{-2} , are overlaid at levels of (0.6125, 1.25, 2.5, 5). The beam size of $6''.06 \times 5''.82$ is shown in panel (a); the H I images are created using the robust-weighted, spectrally averaged data as discussed in Section 2.2.1.

reflected in the FUV curves (e.g., AGC 111164, AGC 174585), but in other cases the profiles do not mimic each other's shape (e.g., AGC 110482, AGC 174605). The reason for these match

ups or discrepancies could be associated with the temporal nature of the H α emission compared to FUV: a recently depleted H α region could certainly still be bright in FUV.

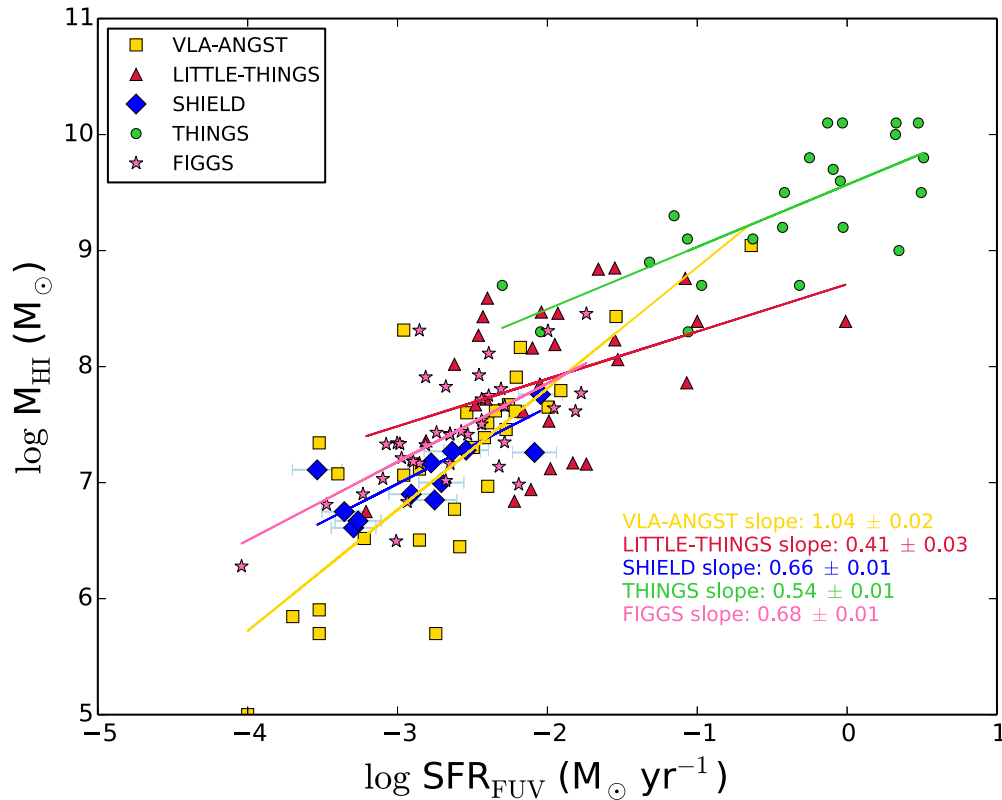


Figure 14. M_{HI} vs. SFR_{FUV} for the 12 SHIELD galaxies. Data from four other nearby galaxy surveys are included for comparison: VLA-ANGST (Ott et al. 2012), LITTLE-THINGS (Hunter et al. 2012), THINGS (Walter et al. 2008), and FIGGS (Roychowdhury et al. 2014). For each galaxy sample, we fit a linear regression for the slope and show these values at lower right. The most similar trends can be seen in the SHIELD and FIGGS data sets; this is not surprising, given that both surveys were selected to study low-mass, gas-rich systems. Note that while a significant portion of the sources from the low-mass surveys lie in the space where $\log(\text{SFR}_{\text{FUV}}) \lesssim -2.5$, very few of these sources have $\log(M_{\text{HI}}) \gtrsim 7.5$; galaxies that are forming fewer stars have smaller HI reservoirs.

Table 5
Elliptical Annuli Parameters

Galaxy ID	Position Angle	Ellipticity	Semimajor Axis	Inclination
(1)	(2)	(3)	(4)	(5)
AGC 110482	125	0.42	16	55
AGC 111164	162	0.36	21	50
AGC 111946	175	0.52	17	62
AGC 111977	207	0.47	29	59
AGC 112521	189	0.42	15	55
AGC 174585	348	0.26	11	42
AGC 174605	49	0.06	11	19
AGC 182595	106	0.21	10	39
AGC 731457	53	0.23	12	40
AGC 748778	43	0.23	10	40
AGC 749237	85	0.40	16	54
AGC 749241	119	0.29	13	45

Note. Column 1—Galaxy name. Column 2—Position angle of the elliptical annuli, measured counter-clockwise from north. Column 3—Ellipticity, where a is the semimajor axis length and b is the semiminor axis length. Column 4—Semimajor axis length (a) in arcseconds. Column 5—Inclination derived from the axial ratio using the prescription of Haurberg (2013).

Third, we plot Σ_{SFR} against Σ_{HI} in a variety of ways. One method uses the FUV, $\text{H}\alpha$, and HI emission within each annulus described above; the surface densities within the concentric annuli are plotted and a slope is derived from the

points with values $>5\sigma$. We present plots of $\Sigma_{\text{FUV SFR}}$ versus Σ_{HI} (using the FUV SFR prescription from McQuinn et al. 2015b) and $\Sigma_{\text{H}\alpha \text{ SFR}}$ versus Σ_{HI} (using the Kennicutt 1998a $\text{H}\alpha$ SFR prescription) in Figures 19 and 20, respectively. Because the $\text{H}\alpha$ data is often clumpy, not radially extended, and in some cases do not have good signal-to-noise ratio, Figure 20 is difficult to interpret with confidence; thus, we do not consider this plot in our final assessment of the average K–S slope for the sample. Figure 19 includes data for every source in the sample, and because the emission is more smoothly distributed than the $\text{H}\alpha$, we have more confidence in using elliptical annuli to find the slope value. The slopes derived in each of these figures and the sample average are included in Table 6; note that the uncertainties quoted are formal uncertainties only.

Fourth, we examine $\Sigma_{\text{FUV SFR}}$ versus Σ_{HI} on a per-pixel basis. For this analysis, we use a Gaussian kernel to smooth the FUV images to the FWHM of the respective HI images. The FUV images are regridded to the HI fields of view and then both are cropped to a 64×64 pixel grid (sufficient to include all detected HI emission in all galaxies). The resulting plots are shown in Figure 21; the best-fit regression line to all pixels is shown in red for each galaxy, and the slope N of the $\Sigma_{\text{SFR}} \propto \Sigma_{\text{gas}}^N$ relation is shown. If $\Sigma_{\text{FUV SFR}}$ and Σ_{HI} are both high in the same pixels—that is, the FUV and HI emission are co-spatial—and they are both relatively low in the same pixels, then we expect a positive slope of the best-fit line. If the $\Sigma_{\text{FUV SFR}}$ falls off more quickly, then the slope is steeper, but if the Σ_{HI} falls off more quickly, then the slope is shallower. An inspection of the images shown in Figures 2 through 13 reveals that both the

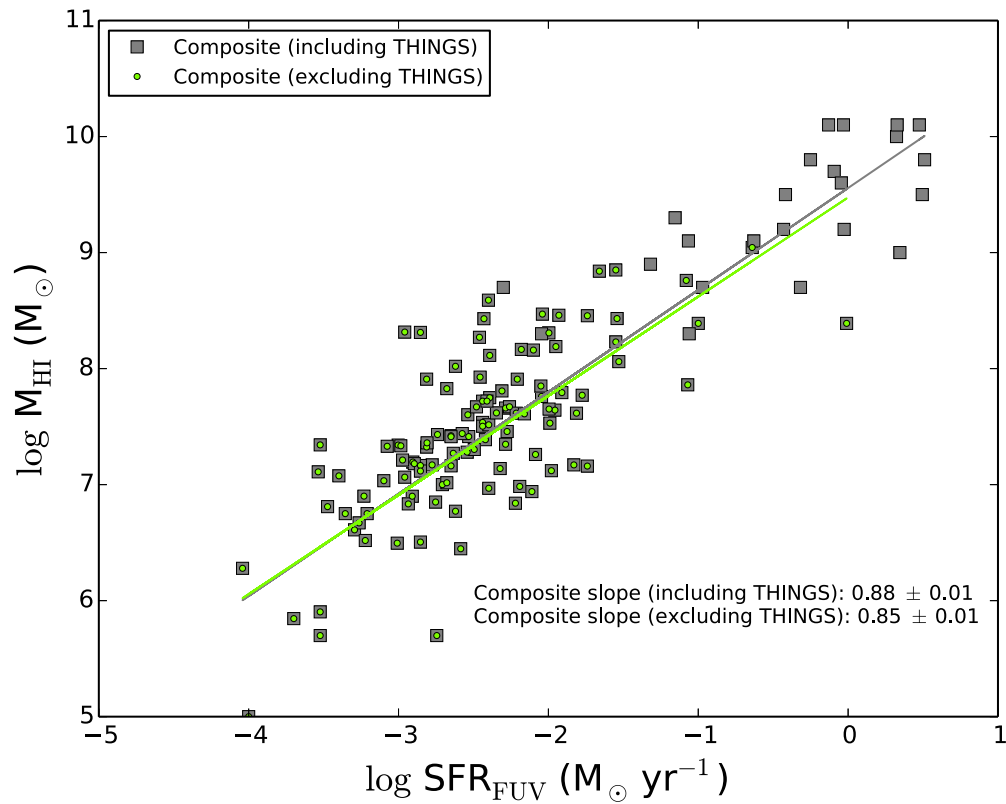


Figure 15. M_{HI} vs. SFR_{FUV} for all surveys shown in Figure 14. Two fits are shown: one to the composite sample of all galaxies (black line) and another to all galaxies excluding the THINGS sources. The slopes of the two lines are essentially indistinguishable.

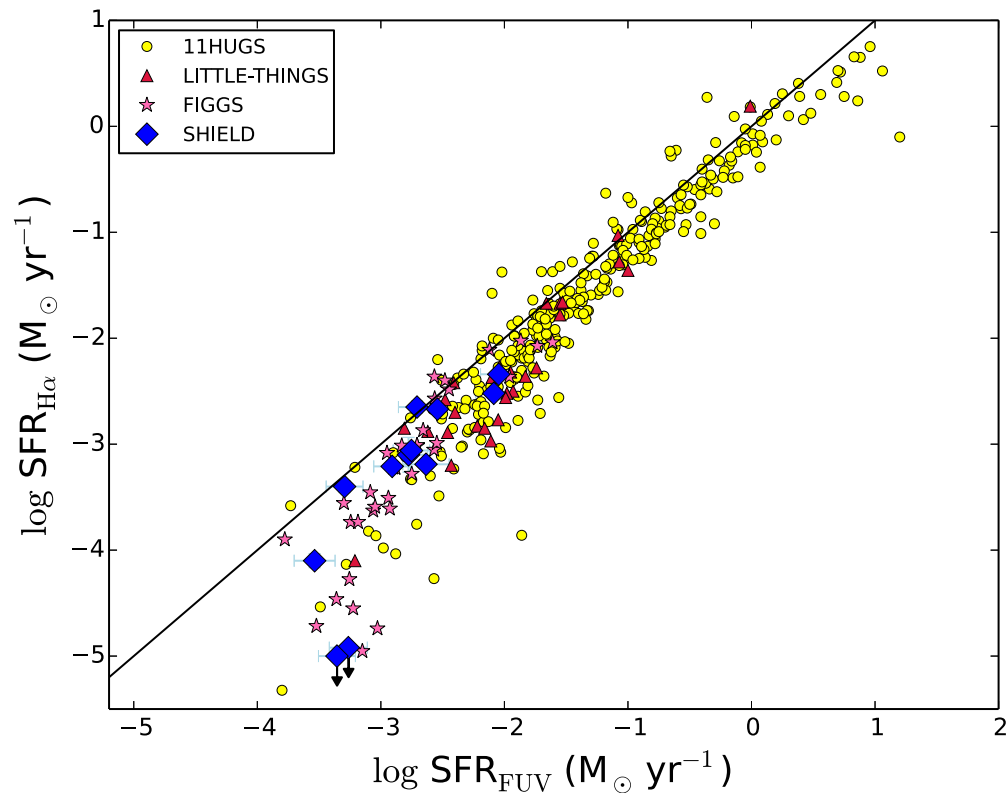


Figure 16. $\text{SFR}_{\text{H}\alpha}$ vs. SFR_{FUV} for the SHIELD sample. The line plotted shows equality. The bottom-most points for SHIELD represent the $\text{H}\alpha$ SFRs for AGC 748778 and AGC 749241, which are both formally upper limits.

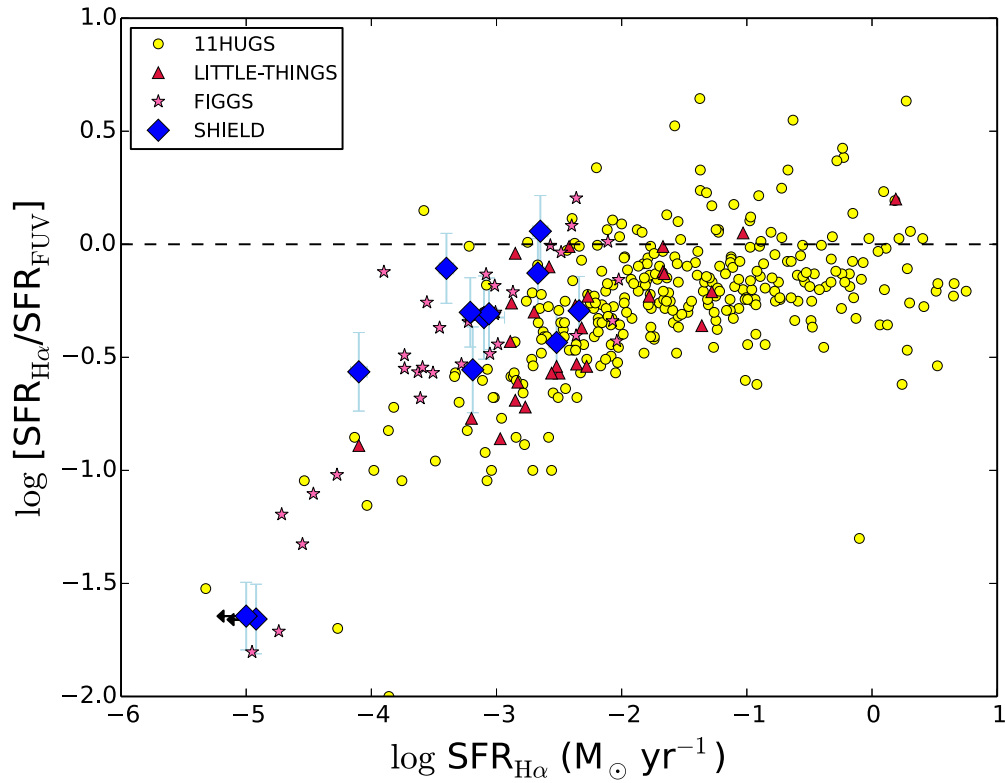


Figure 17. SFR ratio [H α /FUV] vs. SFR $_{\text{H}\alpha}$ for the SHIELD sample. Data from three other nearby galaxy surveys are included for comparison: 11HUGS (Lee et al. 2009), LITTLE-THINGS (Hunter et al. 2012), and FIGGS (Roychowdhury et al. 2014).

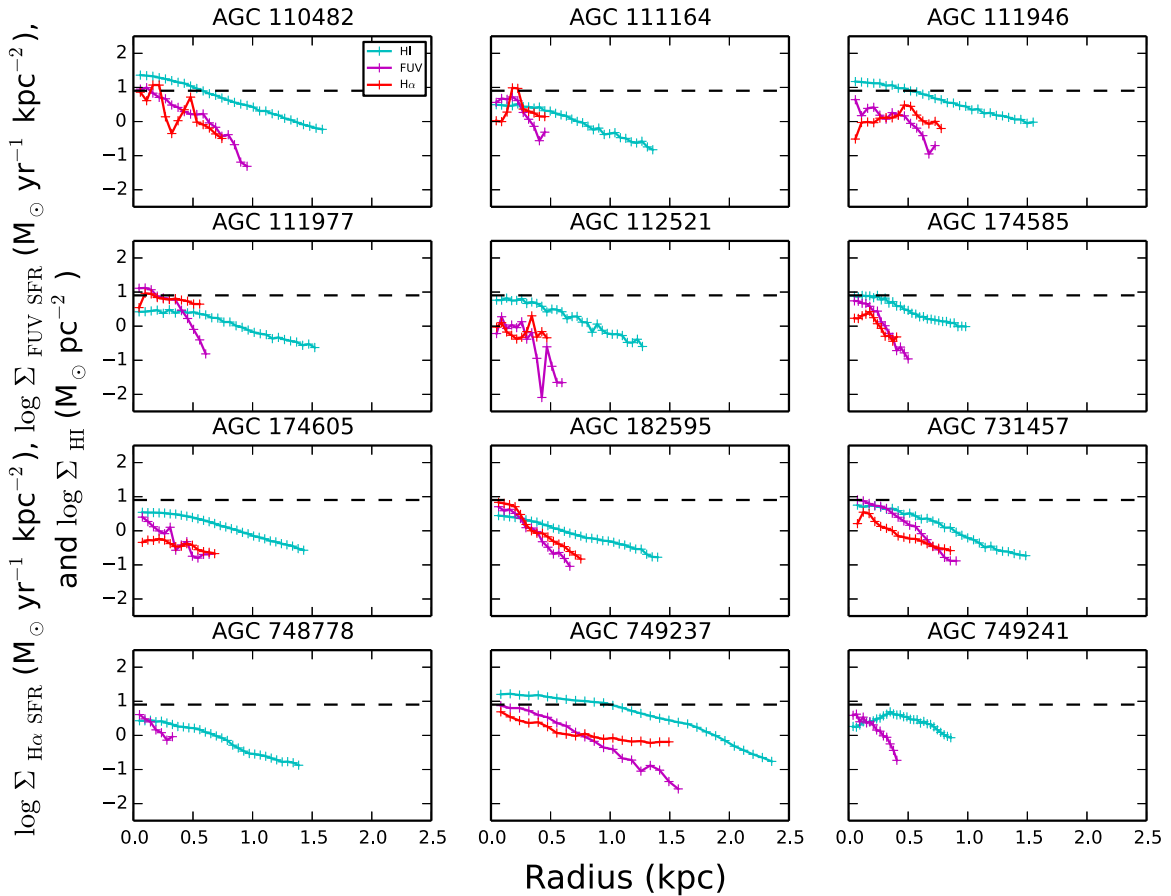


Figure 18. Σ_{HI} (cyan), $\Sigma_{\text{H}\alpha}\text{SFR}$ (red; from the Kennicutt 1998a prescription), and Σ_{FUVSFR} (magenta) vs. radius in kpc for each of the sample members. Only points measured at high confidence (greater than 3σ) are shown. These radial profiles demonstrate the variety of distributions of star-forming regions and gas in the galaxies. FUV data for AGC 749237 are based on a conversion from the associated NUV counts. AGC 748778 and AGC 749241 are non-detections in H α . The horizontal axis is set by the physically largest system, AGC 749237. The horizontal dashed line represents the H I column density threshold of 10^{21} cm^{-2} .

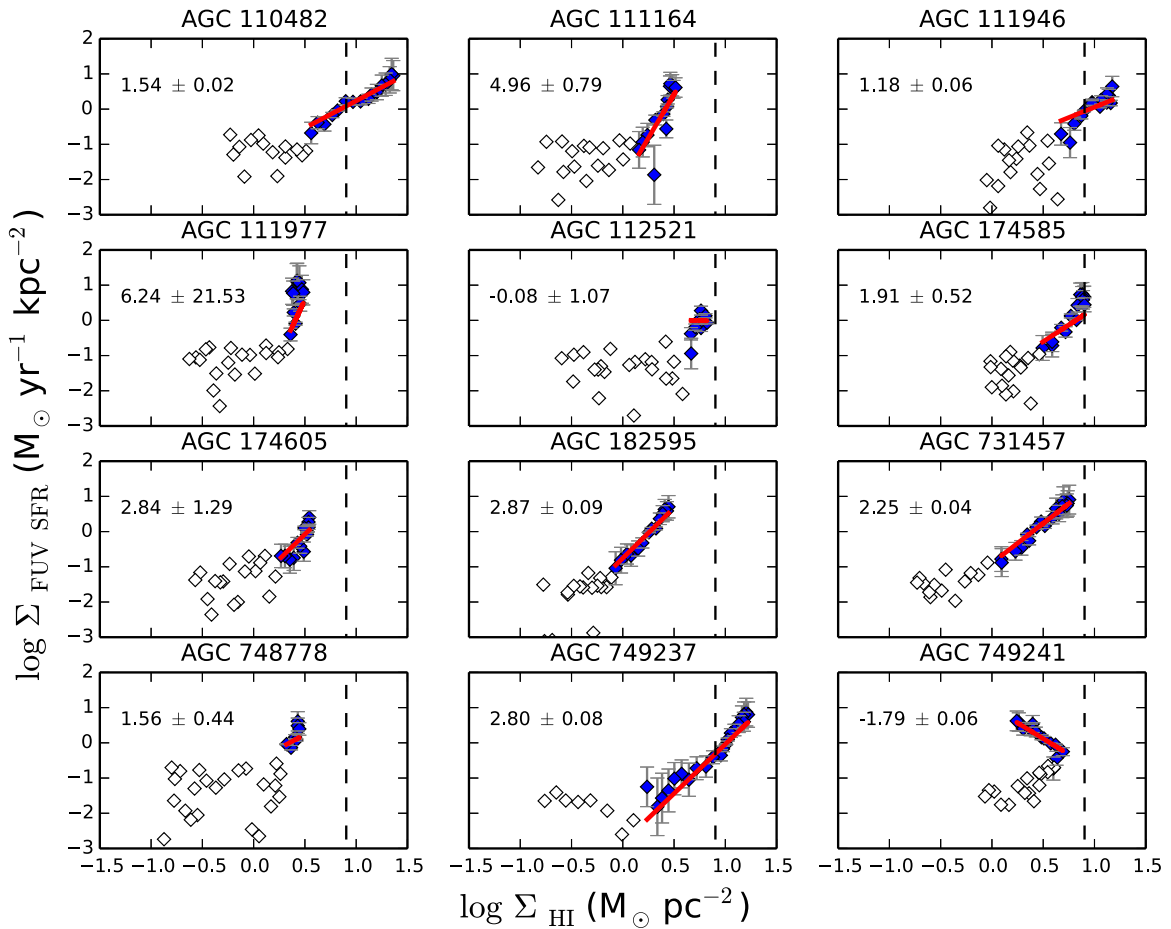


Figure 19. $\Sigma_{\text{FUV SFR}}$ vs. Σ_{HI} for each of the sample members. The slope of the line is the N index in the Kennicutt–Schmidt relation and is included in Table 6. The white points are below our 5σ noise threshold and thus are not included in the calculation of the trendline of the data. The average value for the slope is $N \approx 1.50 \pm 0.02$. The dashed vertical line represents an H I column density of 10^{21} atoms cm^{-2} .

H I gas and the FUV emission have resolved structure; further, some sources have significant offsets of H I versus FUV. Thus, the slopes of the lines are sometimes negative (e.g., AGC 748778 and AGC 749241), indicating an anti-correlation between the atomic gas and the areas of elevated SF activity. The slopes of the K–S relations seen in Figure 21 and the average slope for the sample are included in Table 6.

Finally, we show a series of diagnostic plots which serve two functions: comparing the H I and SF properties, and demonstrating potential effects of the physical resolution on a system’s peak H I column density and K–S slope. The first of these, Figure 22, compares the peak H I column density of each galaxy to its SFR (derived from both FUV and from $\text{H}\alpha$). This allows us to search for trends related to the maximum H I surface density detected in a given source. The second, Figure 23, compares the global H I and SFR surface densities of the SHIELD sample against those in other relevant studies. For the SHIELD galaxies, the global values are calculated by summing all FUV emission and all H I emission in concentric annuli that encompass all of the FUV flux; regions of extended H I gas are not included in the calculation of the areas. This plot allows us to contextualize the global SF properties of the SHIELD sample with respect to sources with significantly higher and lower SFR surface densities; however, we note that the derivation of the SFR is different in each of the included surveys (Kennicutt 1998a; Wyder et al. 2009; Roychowdhury

et al. 2014). Figures 24 and 25 compare the physical resolution sizes of the SHIELD sources against their observed peak H I column density and derived K–S N value.

Using the above diagnostics, we examine causes for the appearances and trends and compare our composite sample to other low-mass galaxy surveys. In Section 4.1 we discuss each galaxy individually, focusing on the morphology, physical reasons for the derived K–S slopes, and local environment surrounding each source. In Section 4.2 we describe the results for the sample as a whole and contextualize our results with regard to other relevant studies. Because we have several different metrics for determining the slope for the Kennicutt–Schmidt (hereafter, K–S) relation, we will discuss the relative strengths and weaknesses of each method. Note that error bars are shown in the figures, but are often unseen because they are smaller than the points themselves. All lines of best fit that are fitted to data in the plots have been weighted by their uncertainties. Average values for the sample, such as the average consumption time, are weighted averages.

4.1. Discussion of Individual Galaxies

As Figures 2 through 13 demonstrate, some galaxies in the SHIELD sample have ongoing SF in regions of relatively high H I column density while others do not. The strength of the correlation between the SF tracers and the locations of elevated H I column densities varies dramatically among the galaxies.

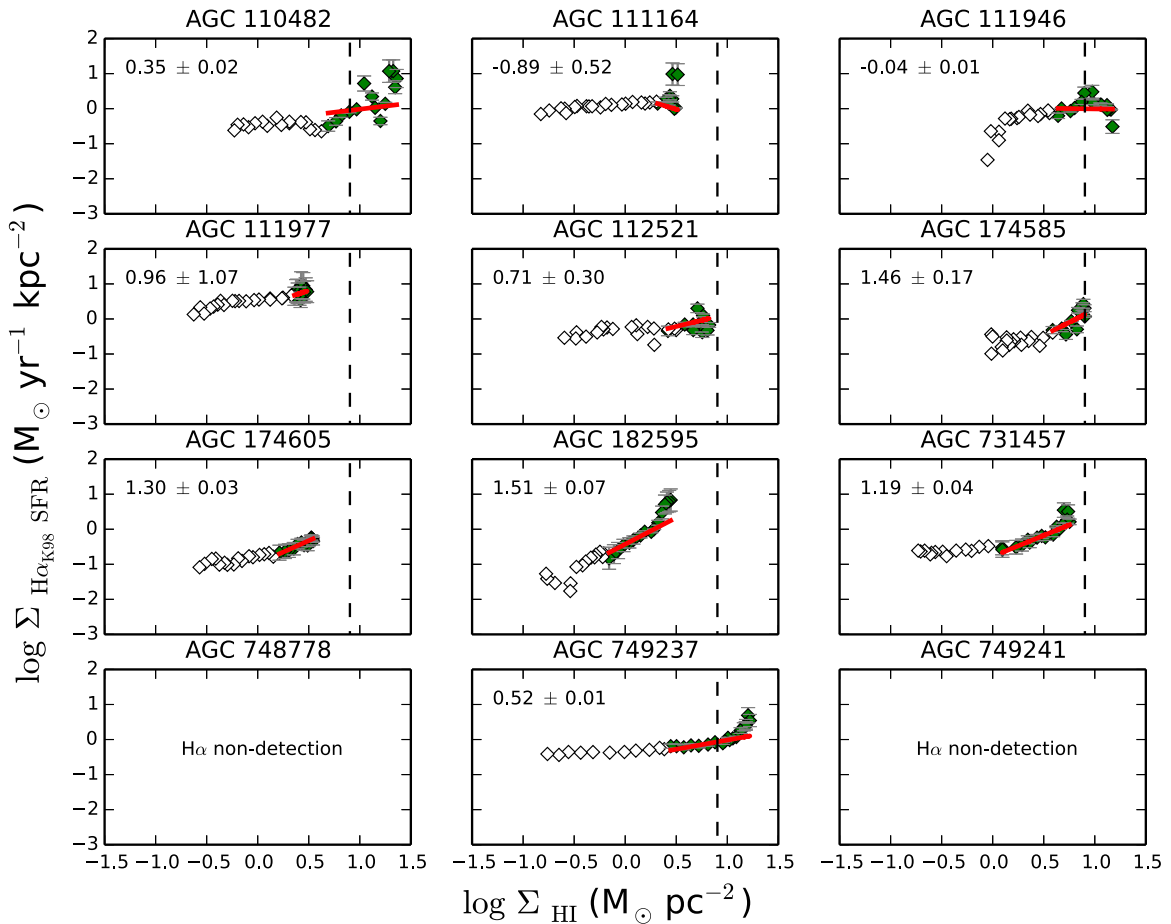


Figure 20. $\Sigma_{\text{H}\alpha \text{ SFR}}$ vs. $\Sigma_{\text{H I}}$ for each of the sample members, using the $\text{SFR}_{\text{H}\alpha}$ derived from the Kennicutt (1998a) prescription. The slope of the line is the N index in the Kennicutt–Schmidt relation and is included in Table 6. The white points are below our 5σ noise threshold and thus are not included in the calculation of the trendline of the data. The average value for the slope is $N \approx 0.34 \pm 0.02$. The dashed vertical line represents an H I column density of 10^{21} atoms cm^{-2} .

Table 6
Star Formation Power-law Parameters

Galaxy ID	FUV Rad. Prof. Index (N)	H α Rad. Prof. (K98 Conv.) Index (N)	FUV Pix-to-Pix Index (N)
(1)	(2)	(3)	(4)
AGC 110482	1.54 ± 0.02	0.35 ± 0.02	1.04 ± 0.10
AGC 111164	4.96 ± 0.79	-0.89 ± 0.52	1.96 ± 0.34
AGC 111946	1.18 ± 0.06	-0.04 ± 0.01	1.57 ± 0.19
AGC 111977	6.24 ± 21.5	0.96 ± 1.07	0.72 ± 0.18
AGC 112521	-0.08 ± 1.07	0.71 ± 0.30	1.65 ± 0.36
AGC 174585	1.91 ± 0.52	1.46 ± 0.17	0.59 ± 0.22
AGC 174605	2.84 ± 1.29	1.30 ± 0.03	0.88 ± 0.10
AGC 182595	2.87 ± 0.09	1.51 ± 0.07	1.03 ± 0.16
AGC 731457	2.25 ± 0.04	1.19 ± 0.04	0.47 ± 0.13
AGC 748778	1.56 ± 0.44	...	-0.28 ± 0.15
AGC 749237	2.80 ± 0.08	0.52 ± 0.01	2.04 ± 0.21
AGC 749241	-1.79 ± 0.06	...	-0.59 ± 0.12
Average	1.50 ± 0.02	0.34 ± 0.01	0.68 ± 0.04

Note. Column 1—Galaxy name. Columns 2, 3, and 4—The slopes of the lines in Figures 19–21 which is the N value in the Kennicutt–Schmidt relation.

As shown in Table 2, only four of the galaxies (AGC 110482, AGC 174585, AGC 731457, and AGC 749237) have H I column densities that exceed 10^{21} cm^{-2} (shown by an orange

contour in those respective figures), yet several of the other sources with “sub-critical” peak H I column densities have co-spatial H I knots and SF regions as traced by both FUV and H α . We now briefly discuss each of the 12 galaxies in turn.

AGC 110482: there is excellent agreement between the two prominent H α regions and the FUV peaks. The southeastern peak of the H I ($\sim 1.7 \times 10^{21} \text{ cm}^{-2}$) is exactly co-spatial with the H α and FUV peaks in that area. There is also a second northwestern maximum in the SF tracers which is very close to the $N_{\text{H I}} = 10^{21} \text{ cm}^{-2}$ contour. Based on these qualities, we expect the smooth radial profile of the H I surface density and a visible bump in the H α SFR surface density profile seen in Figure 18. The K–S slope is steeper in Figure 19 than in Figure 20. The K–S index is 1.04 ± 0.10 from the pixel-by-pixel correlation method (Figure 21). McQuinn et al. (2015a) notes that AGC 110482 is $\gtrsim 0.65$ Mpc from other members of the NGC 672 group.

AGC 111164: the H I gas is distributed almost circularly (but note that AGC 111164 is one of the three galaxies that do not have B-configuration imaging, so the resolution element is comparatively coarse; however, because this galaxy lies at a relatively small distance, the linear resolution is comparable to other sources). However, the stellar component of the galaxy is elongated in *HST* and the B-band, and although the *Spitzer* image shows a similar overall structure, there is a line of bright infrared emission perpendicular to the major axis of the galaxy,

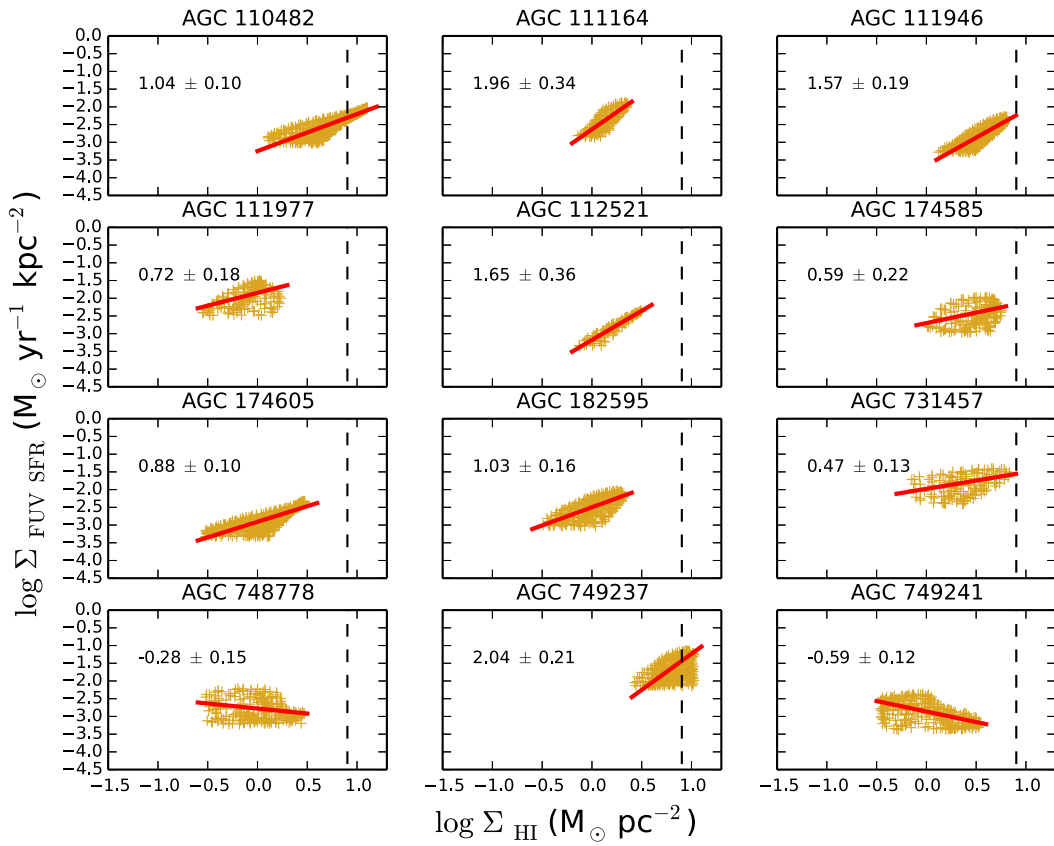


Figure 21. Σ_{FUVSFR} vs. Σ_{HI} for each of the sample members. The points plotted are from the pixel-by-pixel correlation process described in Section 3. All FUV pixel values are above the 10% contour level for each source (i.e., all pixels plotted are greater than 10% of the peak flux), and the same is true of the H I values relative to the peak H I column density. The slope of the line is the N index in the Kennicutt–Schmidt relation and is included in Table 6. The average value for the slope is $N \approx 0.68 \pm 0.04$. A positive slope indicates high FUV and H I emission in the same pixels. The dashed vertical line represents the column density threshold of 1×10^{21} atoms cm^{-2} .

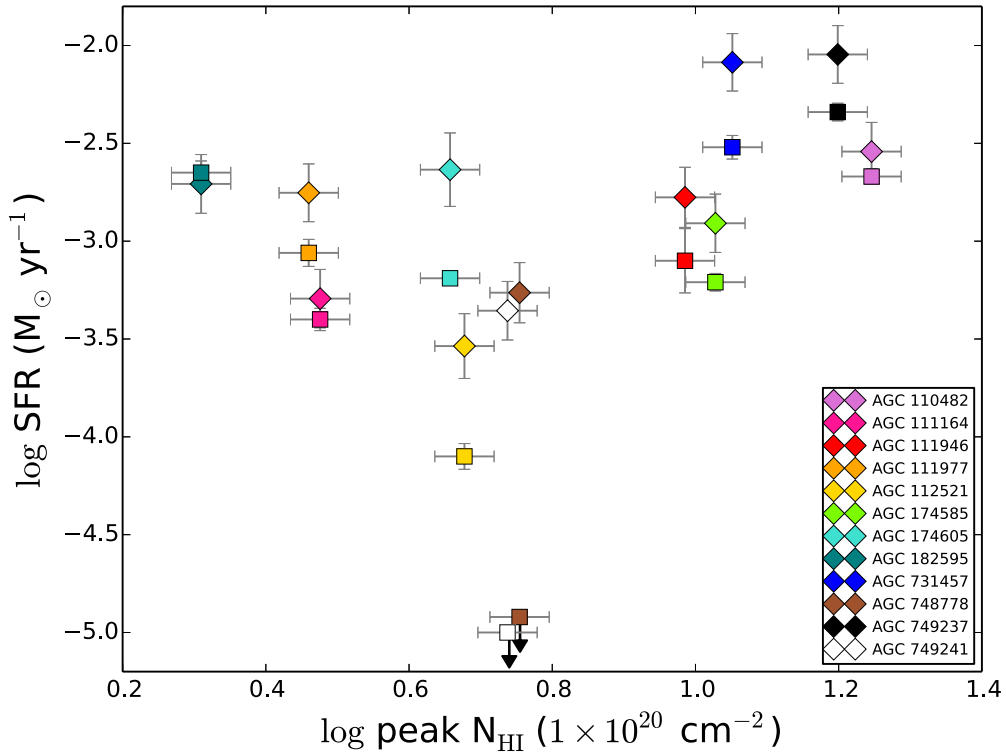


Figure 22. UV and H α -based SFR vs. peak H I column density for each of the sample members. FUV values are represented by diamonds and H α values are represented by squares. In some cases the error bars are smaller than the points themselves. The two bottom-most points represent upper limits on the H α SFRs for AGC 748778 and AGC 749241 (formally non-detections).

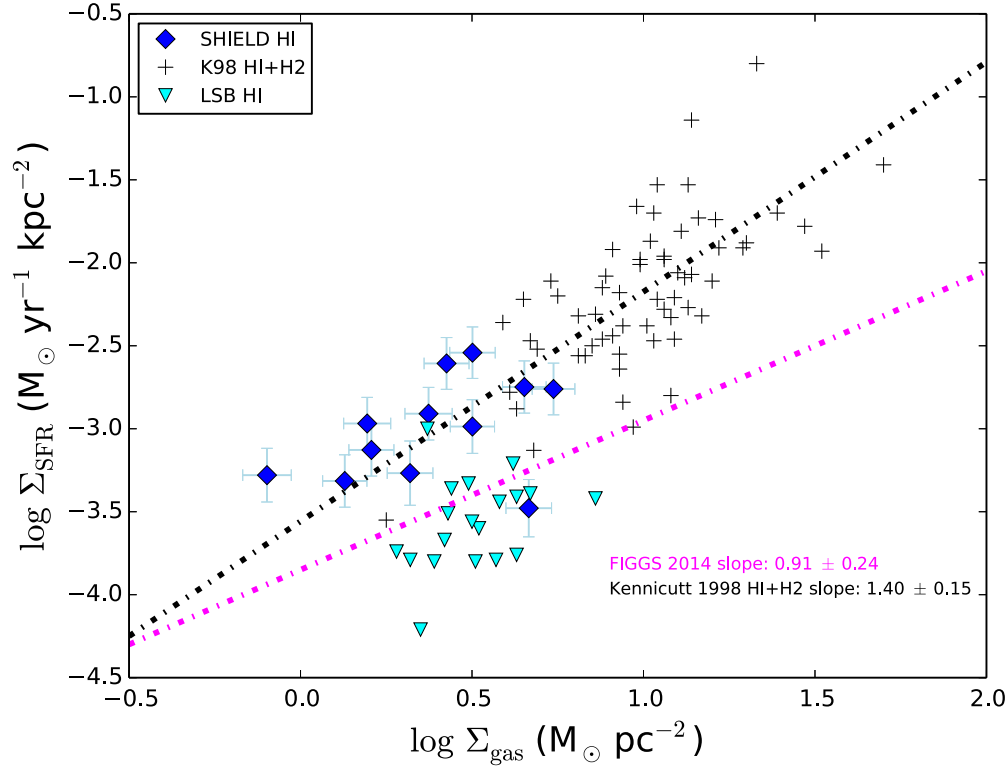


Figure 23. $\Sigma_{\text{SFR FUV}}$ vs. Σ_{HI} for the SHIELD sample. Data from a study of LSB galaxies (Wyder et al. 2009) and slopes from studies of normal spiral galaxies (Kennicutt 1998b) and FIGGS dwarf irregular galaxies (Roychowdhury et al. 2014) are shown for comparison; note that different SFR metrics are used from one survey to the next. While the LSB galaxies lie below the canonical power-law slope, both studies of low-mass dwarfs appear to have shallower K–S relations than the higher-mass spiral galaxies. Note that the data from Kennicutt (1998b) is for HI+H₂, while the other studies use just HI but assume the molecular contribution is negligible.

which is not highlighted in the other panels. The FUV and H α maxima are co-spatial with the B-band and HI maxima. Additionally, the FUV emission is somewhat extended but the H α morphology is consistent with a single H II region; the radial profiles shown in Figure 18 highlight this structure. The peak HI column density is among the lowest in the sample (again, the coarse resolution element likely affects this), yet massive SF is occurring. The slopes of the FUV and the H α surface density profiles differ. Using the FUV images, we determine $N = 1.96 \pm 0.34$ on a pixel-by-pixel basis. McQuinn et al. (2015a) notes that this galaxy lies only ~ 0.14 Mpc from NGC 784 and is part of a linear structure of galaxies associated with this larger dwarf starburst galaxy.

AGC 111946: the HI column density does not reach the 10^{21} cm^{-2} level. However, the HI gas is generally co-spatial with the stellar component in the *HST* and WIYN optical images, and the two H α and FUV peaks lie precisely within the HI peaks. There are observable bumps in the radial profiles (Figure 18) due to the morphology of the SF tracers and the HI. The slope derived in Figure 21 is 1.57 ± 0.19 . McQuinn et al. (2015a) finds that this galaxy is also located in the NGC 784 group, but is ~ 1 Mpc away from its nearest neighbor, suggesting that the recent SF activity is not driven by gravitational interactions.

AGC 111977: this is one of the most enigmatic SHIELD galaxies. The peak HI column density is low (although this source was not observed in the B configuration and so the beam size is coarse, and the relatively larger beam size yields a poorer linear resolution). There is a significant diffuse southern H α region that is prominent in the FUV as well. Interestingly, the HI column density maximum is on the other side of the

disk from these SF regions. Because of the large offset between the HI and SF peaks, the slopes of the radial profile plots are difficult to interpret. The pixel-by-pixel method shows a relatively shallow slope with significant dispersion in the Σ_{SFR} dimension; the average slope is 0.72 ± 0.18 . McQuinn et al. (2015a) finds that AGC 111977 is separated by ~ 0.65 Mpc from AGC 112521.

AGC 112521: the peak HI column density is only half of the canonical threshold value (although this source was not observed in the B configuration and so the beam size is coarse, resulting in a poorer linear resolution), and there is very little SF currently; the FUV and H α luminosities are very low. The single H II region in the north is coincident with the FUV and B-band maximum. The H α and FUV radial profiles are dominated by small number statistics. The pixel-by-pixel method shows the smallest scatter of any of the SHIELD galaxies in the Σ_{SFR} dimension; the average slope is 1.65 ± 0.36 . McQuinn et al. (2015a) finds that AGC 112521 is ~ 0.65 Mpc from several neighbors, including AGC 110482, AGC 111977, and three members of the NGC 672 group.

AGC 174585: this galaxy has a small HI peak that exceeds the 10^{21} cm^{-2} column density threshold; this peak is not co-spatial with the SF regions in the source, which are extended spatially in both the H α and the FUV images. The radial profiles quantify what is clear from the images in Figure 7: extended SF is associated with HI gas of a range of mass surface densities. As expected, the slope of the pixel-by-pixel method is among the shallowest in the sample ($N = 0.59 \pm 0.22$). McQuinn et al. (2015a) notes that AGC 174585 is located ~ 0.9 Mpc away from its nearest neighbors.

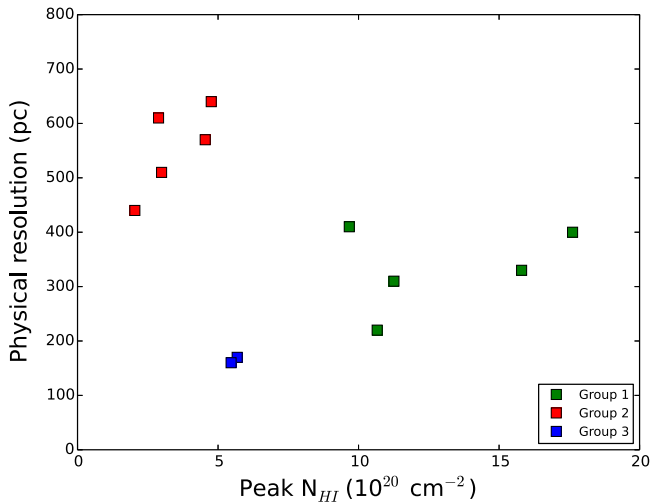


Figure 24. Physical resolution in pc vs. peak H I column density for the SHIELD sample. The galaxies are grouped in the manner described in Section 4.2 according to their similar properties. While two of the five galaxies in Group 1 have the largest distances in the sample, the presence of B-configuration data results in smaller beam dimensions and fine resolution elements, allowing us to see the highest column density H I gas. In Group 2, three of the five galaxies lack B-configuration data, which contributes to their coarser resolution elements and inability to detect higher column density H I gas. The Group 3 galaxies are the outliers: the inclusion of B-configuration data provides fine resolution elements, but the galaxies are low-mass and devoid of higher column density H I gas.

AGC 174605: although the H I column densities are low, the H I peak is tightly correlated with the H α and FUV peaks (well within the H I beam). The FUV image is the only one in the sample at AIS depth, and the noise is high. Similarly, the H α image has a pronounced gradient. The radial profiles show somewhat steeper slopes than the pixel-by-pixel method ($N = 0.88 \pm 0.10$). McQuinn et al. (2015a) finds that AGC 174605 is truly isolated with no known neighbors in a 1 Mpc radius.

AGC 182595: this galaxy has the lowest peak H I column density of the SHIELD galaxies, and yet it is relatively luminous in both H α and the FUV. Note that both the H α and the FUV emission are spatially extended. There is a noticeable offset between the H I peak and the *HST*, B-band, and FUV peaks, and it is even more apparent when compared to H α . AGC 182595 is the only source in the sample with a ratio of $\text{SFR}_{\text{H}\alpha}/\text{SFR}_{\text{FUV}} > 1$, perhaps indicating a modest starburst episode. McQuinn et al. (2015a) notes that it has the lowest gas-to-stellar mass ratio of the sample and has the second-shortest gas consumption timescale. Figures 19–21 all show smooth slopes consistent with trends seen in larger galaxies. Although the N values have a considerable range in these plots, the slopes are all well-defined; the pixel-by-pixel average slope is 1.03 ± 0.16 . McQuinn et al. (2015a) finds that AGC 182595 is truly isolated with no known neighbors in a 1 Mpc radius.

AGC 731457: this source eclipses the 10^{21} cm^{-2} H I column density threshold and has one of the highest SFRs in the sample using both H α and FUV metrics. There are several luminous H α regions; some of these are co-spatial with the extended FUV emission, but there are regions that are H α bright and FUV dim and vice versa. The H I peak is slightly offset not only from the SF regions but also from the optical counterpart of the source as shown by the *HST* image. A cursory inspection of Figure 10 shows that SF regions are associated with H I gas

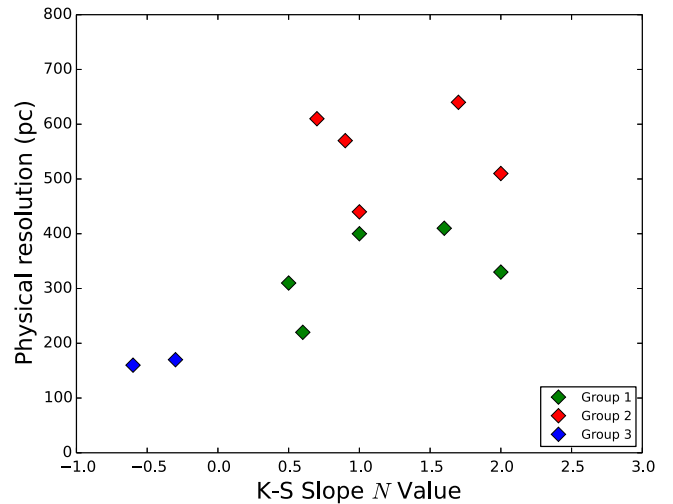


Figure 25. Physical resolution in pc vs. N value (the derived slope for the Kennicutt–Schmidt relation) for the SHIELD sample. The galaxies are grouped in the manner described in Section 4.2 according to their similar properties. While the members of Groups 1 and 2 can be characterized by differing physical resolution elements, they both have similar range and dispersion in terms of their N values. Group 3 is the obvious outlier, hosting the only two galaxies with negative N values. It is apparent that on sufficiently small scales, the K–S relation is no longer valid.

at a broad range of observed mass surface densities. As in AGC 182595, we see steeper slopes for the radial SFR surface density plots than for the pixel-by-pixel correlation; AGC 731457 has the shallowest (positive) slope of any of the SHIELD galaxies via this metric ($N = 0.47 \pm 0.13$). McQuinn et al. (2015a) notes that AGC 731457 is located ~ 0.9 Mpc away from its nearest neighbors.

AGC 748778: this source has a dramatic H I morphology that is highly extended relative to the stellar population, extending more than 1 kpc to the south. Two H I maxima are observed, only one of which overlaps spatially with the stars in the galaxy. The H α emission is very weak in this source, so much so that it was a non-detection in our observations. Interestingly, the source is detected with significance in the FUV image. The recent SF traced by this FUV flux is associated with a range of H I mass surface densities, and some FUV flux contains no associated H I gas at our current level of sensitivity. McQuinn et al. (2015a) finds that AGC 748778 is truly isolated with no known neighbors in a 1 Mpc radius, suggesting that it is unlikely that gravitational interactions have driven the recent SF activity.

AGC 749237: this is the largest galaxy in the sample by mass, and optical and H I diameter, and it has the highest SFR (in both FUV and H α). It has the second highest peak H I column density in the sample. The most intriguing aspect of the galaxy is that two of the H α and FUV knots are co-spatial with two of the H I peaks, but not the largest and densest one. Figure 12 reveals that the highest H I mass surface densities are associated with the outer disk of the system and contain no H α and weak FUV emission (compare the H α -based SFR density profile in Figure 20 with the FUV-based profile in Figure 19). In Figure 21, we see an intriguing effect: the large spread in FUV points at the peak H I values occurs because there are both very high and very low FUV values associated with the peak H I pixels; this trend is seen clearly in Figure 12. Nonetheless, AGC 749237 stands out in the pixel-by-pixel diagram as having the steepest K–S index ($N = 2.04 \pm 0.21$). McQuinn et al. (2015a) finds that this galaxy is truly isolated with no

known neighbors in a 1 Mpc radius, so it is likely that its recent SF activity is internally regulated.

AGC 749241: like *AGC 748778*, this source has a highly unusual HI morphology, where the bulk of the HI gas is not co-spatial with the stellar component. The source is a non-detection in both the H α and infrared images. Like *AGC 748778*, it is detected with confidence in the FUV, although it does harbor the lowest SFR_{FUV} in the sample, and shows an obvious offset in the HI gas and FUV emission. The Σ_{SFR} radial profile and the pixel-by-pixel diagnostic both suggest a negative K–S index for this source. As for *AGC 748778*, the offset of HI and FUV is the cause. For a galaxy to have such inefficient SF combined with a highly offset HI component is certainly an interesting scenario. The question of whether some kind of tidal interaction has separated the HI so visibly from the stars has been addressed: McQuinn et al. (2015a) investigates the environment surrounding this source and finds that *AGC 749241* lies in populated region with nine galaxies that form a linear structure 1.6 Mpc from end to end. While it is possible that gravitational interactions among the systems in this structure have contributed to the offset of gas and stars visible in *AGC 749241*, the low recent SF activity found in the galaxy indicates that any gravitational interaction has not had a dramatic impact on the star-forming properties over the past 200 Myr.

4.2. The Star Formation Process in Extremely Low-mass Galaxies

4.2.1. The Kennicutt–Schmidt Relation

The discussion above highlights the difficulty of determining a SF “law” in extremely low-mass galaxies. Using H α images presents challenges; in a given galaxy, HII regions are few in number (at most three well-defined clumps in a single SHIELD source), faint (low total luminosity), and sometimes offset from the optical centers of the sources. While the use of FUV images has certain advantages (longer SF timescales, more uniform spatial coverage), the physical sizes of the galaxies themselves (of order 1 kpc or smaller) present fundamental limitations that are not encountered when undertaking similar studies of more massive galaxy disks. Further, the sources are relatively faint. Neither of these problems would exist for more massive galaxies at the same distances.

Despite these challenges, we produce three sets of plots in order to decipher the K–S relation for each of the SHIELD galaxies (Figures 19–21). Because two different methodologies were used and two different SF tracers were involved, the slope values derived in the plots vary substantially. For these three figures, we derive average slopes of $N \approx 1.50 \pm 0.02$, $N \approx 0.34 \pm 0.01$, and $N \approx 0.68 \pm 0.04$, respectively. Note that the inclusion of *AGC 748778* and *AGC 749241*, both of which have low or negative slopes in the FUV-based figures and are absent from the H α -based figure, may skew the average slopes to low values. Further, the images used to create all three figures are smoothed to a small degree, effectively smearing out the flux from the peak and possibly making the slopes less dramatic.

Comparing the modes of analysis noted above, we conclude that the pixel-by-pixel correlation method (Figures 21) provides the most holistic and reliable representation of the comparative qualities of HI and recent SF in the SHIELD galaxies. The uncertainties for the slopes are lower for the

pixel-by-pixel method than for the radial profile methods (Figures 19 and 20), and the power-law slopes from the pixel-by-pixel method more closely match what would be expected from visual inspection of Figures 2–13. We also note that the inner annuli used to derive the surface densities and produce Figures 19 and 20 are sensitive to small changes in the precise positioning of the ellipse centers; moving in a given direction by a single pixel can include or exclude significant H α or UV flux (moving the aperture by an entire HI beam size can result in flux changes of 50% or more), thus changing the shape of the resulting power-law slope. Using Figure 21 as our metric, the K–S slope values of the 12 galaxies break down as follows: 2 sources have $N < 0.0$, 6 have $0.0 < N \leq 1.0$, and 4 have $N > 1.0$.

We must note here that our technique for analyzing the K–S relation on sub-kiloparsec scales differs in an important way from other recent studies. Because the galaxies in a given sample all reside at different distances, the physical size scale for each source will be different. The native resolution of the HI beam will also contribute directly to this size scale: a beam of finer resolution will yield a smaller physical resolution. These other studies (such as Roychowdhury et al. 2009, 2015 and Bigiel et al. 2008) smooth the data for each galaxy in their sample to a common physical resolution (e.g., ~ 400 pc or 1 kpc) in order to analyze the relationship of gas and stars on the same physical scale. We chose not to perform this smoothing, instead keeping the SHIELD galaxies at their native physical resolutions (see Table 2). There are a number of reasons for this decision: first, the minimum common resolution we would have had to smooth to would have been ~ 600 – 650 pc (limited unfortunately by those sources that lack VLA B-configuration HI data). While this does not pose a serious problem for the THINGS galaxies (larger spiral galaxies) or the FIGGS galaxies (dwarf galaxies with a mean sample distance of 4.7 Mpc), the SHIELD survey works with galaxies that are of similar size to FIGGS but span a factor of two in distance. Our sources are at a mean distance of 8.1 Mpc, with none closer than 5.1 Mpc. This range in distances means that we can fit fewer resolution elements across a galaxy—for example, even *AGC 749241* (at a relatively small distance of 5.62 Mpc) is only ~ 2100 pc across in its HI map, meaning we could fit less than four smoothed resolution elements across the galaxy, effectively smearing out any useful spatial information. Second, the high-resolution data give us insight into the exact locations of the HI peaks and also lets us see the highest column density HI gas; if we smoothed all galaxies to a coarser common resolution, our analysis of the HI column density threshold would be less secure. Third, our analysis of the SHIELD galaxies on a variety of fine resolutions demonstrates the break down of the K–S relation on small scales, as found in previous studies, such as Schrubba et al. (2010).

Situations such those in as *AGC 111977* and *AGC 749241* reveal certain advantages of not fixing the physical resolution: both of these sources have interesting morphologies, with HI peaks that are distinctly offset from the SF tracers. Both of these sources are at a distance of ~ 6 Mpc, but *AGC 111977* lacks B-configuration data and thus has a resolution about four times as coarse as *AGC 749241*. Unfortunately, this makes comparing their K–S relations challenging, and it also begs the question: if higher-resolution data were available for *AGC 111977*, what would we see? Instead of having a slope of $N \approx 0.72 \pm 0.18$ when the physical resolution is ~ 690 pc,

it might shift to a flat or negative slope, as is the case with AGC 749241 at a resolution of ~ 170 pc. Likewise, smoothing the data for AGC 749241 to a coarse resolution might reduce the strength of the anti-correlation we currently see in Figure 21.

4.2.2. Grouping the Galaxies

Based on the analysis in Section 4.1 and the pixel-by-pixel metric (Figure 21), we divide our sample into three broad categories that share similar characteristics: (1) mainly co-spatial HI and SF regions, found in systems with the highest peak HI column densities and highest total HI masses; (2) systems that show a range of correlation strengths between HI and SF regions, and that also span a range of peak HI column densities; and (3) obvious offsets between HI and SF peaks, found in systems with the lowest total HI masses. These groupings are heterogeneous but useful for comparison purposes.

Group 1 contains the systems that most closely resemble the “expectations” of active SF in regions of high HI column density: AGC 110482, AGC 111946, AGC 174585, AGC 731457, and AGC 749237. These sources demonstrate the strongest observed correlations between the HI and SF peaks, and each system reaches a relatively high peak HI column density ($\gtrsim 9 \times 10^{20} \text{ cm}^{-2}$). It is important to note that the comparative properties of HI and SF vary among and within these sources: the pixel-by-pixel N indices of these sources vary between 0.59 and 2.04, and AGC 110482 shows compact H II regions while AGC 731457 shows extended H α emission and widely extended FUV emission. These comparatively “well-behaved” sources are generally at the higher-mass end of the SHIELD sample. We include AGC 749237 in this first group, but note that while some of its ongoing SF is strongly correlated with high mass surface density neutral gas, the highest HI columns are devoid of SF altogether.

Group 2 contains a variety of SHIELD sources that span a range of properties: AGC 111164, AGC 111977, AGC 112521, AGC 174605, and AGC 182595. They have moderate peak HI column densities ($\lesssim 5 \times 10^{20} \text{ cm}^{-2}$) and display a range of correlation strengths between these peaks and the regions of SF. We must also note that the three sources that are lacking B-configuration data are included in this group; it is likely that their low sensitivity to high column density HI gas contributes to the low HI column densities of those sources which have been grouped here. Visual inspection of the images of these galaxies illustrates some similar traits among these sources. In general, higher than average HI columns are nearly co-spatial with SF tracers (e.g., AGC 111164). Again, notable issues exist among and within the members of this group: AGC 111977, for example, harbors extended SF, but the HI peak is not co-spatial with the highest surface brightness emission. With the exception of AGC 111164, these systems also represent the middle of the mass range for the sample.

Finally, Group 3 contains two highly unusual galaxies: AGC 748778 and AGC 749241. These systems stand out compared to the other SHIELD galaxies: they harbor the lowest stellar masses (McQuinn et al. 2015a), the narrowest HI linewidths (see Table 2), the weakest H α emission, and among the weakest FUV emission. Further, their morphologies are highly unusual compared to the other sample members, in that the HI gas is significantly offset from the high surface brightness stellar population. The negative K–S indices

highlight the extreme nature of these sources; with the present data we are unable to determine the origin of the offset of the HI and the stars, but two scenarios are possible. One possibility is tidal effects from the local environment near the galaxy. McQuinn et al. (2015a) examined the environment immediately surrounding each of the SHIELD sources in three dimensions using the nearest neighbor metric, and suggested that AGC 749241 has likely been influenced by the external gravitational perturbations from other systems. Another possible scenario is that both of these galaxies had strong SF events in the past, resulting in the prominent FUV but non-existent H α emission seen today. Due to their low mass (both stellar and HI), these episodes might have disrupted the central HI gas and, in turn, shut down any further SF. While the details are complex and depend on the coupling of mechanical feedback energy to the surrounding ISM, over time, this could create an apparent offset between the gas and the stars. While the offsets might appear more extreme in these two systems compared to the rest of the sample, the observed offsets in other galaxies in the sample (e.g., AGC 111977) could also be explained by a major SF event disrupting the nearby gas. In this scenario, the time elapsed since a major SF event matters greatly: H II regions would only be co-spatial with the HI gas peaks if the SF event is young or current and has not had time to disrupt the gas significantly.

Figure 24 plots the SHIELD galaxies in these three distinct groups to identify trends based on the physical resolution and peak HI column density of each source. This plot confirms that the peak HI column observed certainly depends on the fineness of the resolution element, indicated by the location of Group 2 in comparison to Group 1. However, Group 3 defies this trend, and there exist members of Group 1 that have resolutions barely better than members of Group 2 yet have significantly higher HI columns. We also note that Group 2 contains all three galaxies that lack B-configuration data; this demonstrates the degree to which the high-resolution VLA observations allow us to see higher column density HI gas.

Figure 25 yields a different perspective. Again, the three groups of galaxies do not mingle very much, and it is apparent that some correlation exists between the physical resolution element for a galaxy and its resulting K–S slope. At smaller resolutions, it is more likely that the HI gas will appear offset from the SF regions, resulting in flatter or more negative N values. This trend can also be seen in the images of the galaxies (Figures 2–13) and in Figure 21. These plots together provide evidence for one of our key results: at small physical scales, the K–S relation is no longer valid.

4.2.3. Atomic versus Molecular Gas as a Tracer for Star Formation

Taken as a composite sample, the average of the pixel-by-pixel K–S indices for the SHIELD galaxies is $N \approx 0.68 \pm 0.04$ (based on the slopes derived in Figure 21). To put this average value and the individual galaxies’ values in perspective, we compare to Bigiel et al. (2008) and Leroy et al. (2008), who find $N \approx 1.0 \pm 0.2$ for the molecular Schmidt law (only relating Σ_{H_2} and Σ_{SFR}) in their sample of spiral galaxies. They do not ultimately base their conclusions on the relation of Σ_{HI} to Σ_{SFR} because most of their galaxies show little correlation between HI mass surface density and ongoing SF tracers. Our N values are quite similar and our method intentionally parallels theirs; however, it is important to remain mindful that this comparison is not one to one, since we use HI data

exclusively and the studies of Bigiel et al. (2008) and Leroy et al. (2008) account for the molecular phase. Those works conclude that, even for the spirals that are qualitatively different from the SHIELD galaxies in fundamental ways, the SFE varies considerably across their sample and within their individual galaxies. The conclusion of both studies is that the SFE is set by local environmental factors (i.e., SF is internally regulated; see McQuinn et al. 2015a).

Other recent work has extended the K–S analysis to other types of galaxies; Figure 23 presents this comparison. A study of low surface brightness (LSB) galaxies by Wyder et al. (2009) finds that these sources tend to lie below the canonical composite (HI+H II) K–S relation from Kennicutt (1998a). An extrapolation of the slope for these sources would appear even steeper than for the larger and higher surface brightness galaxies. However, the analysis by Roychowdhury et al. (2014) of FIGGS dwarf irregulars yields an $N \approx 0.91 \pm 0.24$, which is in excellent agreement with our results. Both of these slopes are clearly shallower than the composite slope from Kennicutt (1998a), indicating a deviation from the canonical K–S law found for higher-mass galaxies but in a different manner than found in Wyder et al. (2009). Each of these low-mass galaxy studies—SHIELD, the LSB galaxy study, and FIGGS—assume the molecular component of the gas is negligible. The authors of the FIGGS study suggest that their results favor a model of SF where thermal and pressure equilibrium in the ISM regulate the rate at which SF occurs, where the thermal pressure in turn is set by supernova feedback.

Our analysis leads us to a similar conclusion as those presented in these other works: SF in extremely low-mass galaxies is dominated by stochasticity and random fluctuations in their ISM. Using the qualities of HI gas alone, it is very challenging to predict where a given system will show signs of recent SF. Similarly, knowing the distribution of H α and/or FUV emission offers little insight into where we might expect to see high HI mass surface density.

We do not see strong evidence for a threshold HI column density above which we see signs of recent SF and below which we do not. The SHIELD sample contains multiple examples of both “super-critical” and “sub-critical” gas associated with H α and with FUV emission. As Figure 22 demonstrates, the column density of an HI region correlates only loosely with its SFR in our sample. While the differing HI beam dimensions and resulting physical resolutions certainly play a role in determining the highest column density gas detected, a sample-wide trend would not necessarily be borne out by improved resolution for the low column density sources; AGC 748778 and AGC 749241 have only moderate HI column densities despite their fine physical resolutions.

Overall, our data suggest that SF does not only occur in regions exceeding the suggested critical HI column density. In fact, there does not even seem to be a lower threshold: members of Group 2 (see above) all have relatively co-spatial ongoing SF and HI peaks, yet they have column densities $\lesssim 5 \times 10^{20} \text{ cm}^{-2}$ where the SF is occurring; members of Group 3 have significant FUV emission in regions that are in fact devoid of HI entirely down to the limits of our observations. It is apparent from our study of these low-mass dwarf galaxies that HI is not a useful tracer of SF when used in the K–S relation; numerous studies have come to similar conclusions (Roychowdhury et al. 2015; Filho et al. 2016).

Additionally, recent studies by Michałowski et al. (2015) and Krumholz (2013) have found that low-mass SF galaxies, despite having very low molecular gas fractions, are still able to form massive stars. This idea is supportive of our results in that high-mass SF has occurred in the metal-poor SHIELD galaxies; the stochastic nature of SF is certainly a contributing factor to the variation in K–S relations seen in the sample.

4.2.4. Gas Consumption Timescales

We close by commenting on the characteristic gas consumption timescales (GCTs) of the SHIELD galaxies. There are two methods of calculating the GCT (the time it would take for the galaxy, at its present-day SFR, to completely use up its neutral hydrogen gas reservoir); the first requires taking the inverse of the total SFE. In this way, we find an average GCT for the sample of $\sim 2 \times 10^9$ years from the global comparison of Σ_{SFR} to Σ_{HI} . This is nearly an order of magnitude lower than those found in Roychowdhury et al. (2014) for the FIGGS galaxies, and roughly two orders of magnitude below the timescales derived in the outer regions of spiral galaxies. Leroy et al. (2008) and Bigiel et al. (2008) find that molecular GCTs for the THINGS galaxies are of order $\sim 2 \times 10^9$ years. The authors also suggest a mechanism that we conclude is likely at play in our sample as well: microphysics in the interstellar medium below the scales we can observe (in the form of random gas motions and stellar feedback) which govern the formation of molecular gas from HI.

Employing the second method, in which we simply divide the total HI gas mass by the total SFR of the galaxy, we get slightly different results. This straightforward approach yields an average GCT for the SHIELD galaxies of $\sim 10^{10}$ years; if we ignore the most extreme outlier in the sample (AGC 112521, with a derived GCT of $\sim 45 \times 10^9$ years), then the average drops to $\sim 7 \times 10^9$ years. These higher average values show consistency with results for a sample of ALFALFA dwarfs, in which the authors found a GCT of 8.9×10^9 years (Huang et al. 2012). Consumption times derived via both methods are included in Table 4. Note that the uncertainties for both modes of calculation are significant.

5. CONCLUSIONS

SHIELD is a systematic investigation of a sample of extremely low-mass dwarf galaxies outside the Local Group. Despite the low HI column densities observed in many systems, each SHIELD galaxy has significant FUV luminosity, and we detect H α emission in all but two of them. The ability to compare multi-configuration VLA HI data with SF tracers in other wavelengths allows us to examine, on a local and global scale, the SF “law” in these systems. We calculate Σ_{HI} and Σ_{SFR} for all sample members and find the SFEs. We derive an index for the Kennicutt–Schmidt relation via several different methodologies. The ensemble average index using the pixel correlation method gives $N \approx 0.68 \pm 0.04$; this is in good agreement with other studies of low-mass dwarf galaxies, but is shallower than the canonical K–S relation from Kennicutt (1998b). By comparing the SHIELD results to those from other major nearby galaxy surveys, we find that HI mass and UV-based SFR are strongly correlated over five orders of magnitude.

We stress that any one galaxy in the sample is not representative, and that the values of N vary considerably

from system to system. Instead, we focus on the narratives of the individual galaxies and their distribution of gaseous and stellar components, which are complex and occasionally puzzling. The average consumption time for the sample of $\sim 2\text{--}10$ Gyr suggests that they will consume their gas reservoir over timescales similar to those found in other dwarf galaxy surveys.

At the extremely faint end of the HI mass function, these systems appear to be dominated by stochastic motions in their extreme ISM. The local microphysics within the ISM of individual galaxies may govern whether or not they show signs of recent SF. Based on our data, knowledge of the HI properties holds little predictive power in terms of the resulting SF characteristics. Similarly, we see ongoing or recent SF in unexpected regions of many of the SHIELD galaxies. The observed offsets between gas and stars in the galaxies could originate from tidal interactions, or the offsets might appear based on how much time has elapsed since a major SF event disrupted the central gas component. If causal relationships between atomic HI gas and SF exist in galaxies in this extreme mass range ($6.6 < \log(M_{\text{HI}}) < 7.8$), these relationships remain elusive with current data.

In addition to the analysis presented here, a companion paper by McNichols et al. (2016) studies the HI gas kinematics and dynamics of the SHIELD galaxies. Two- and three-dimensional analyses are used to constrain rotational velocities. It is argued that the SHIELD galaxies span an important mass range where galaxies transition from rotational to pressure support. The sources are contextualized on the baryonic Tully–Fisher relation.

The now-complete ALFALFA catalog contains dozens of galaxies with HI and stellar properties comparable to those of the 12 SHIELD galaxies studied in this work. Observations similar to the ones presented here are underway to characterize the SF properties of this statistically robust sample.

The authors acknowledge the work of the entire ALFALFA collaboration team in observing, flagging, and extracting the catalog of galaxies used to identify the SHIELD sample. The ALFALFA team at Cornell is supported by NSF grants AST-0607007 and AST-1107390 to R.G. and M.P.H. and by grants from the Brinson Foundation. Y.G.T., A.T.M., and J.M.C. are supported by NSF grant AST-1211683. E.A.K.A. is supported by TOP1EW.14.105, which is financed by the Netherlands Organisation for Scientific Research (NWO).

We gratefully acknowledge Adam Leroy for the idea of an IDL code for mask-creation, and Charlotte Martinkus and Ned Molter for moral support. This work would not have been possible without the incredible support for Python³¹ provided by the online community at StackOverflow.com. Plots featured in this paper have been created with the Python package MATPLOTLIB.

Support for *Hubble Space Telescope* data in this work was provided by NASA through grant GO-12658 from the Space Telescope Institute, which is operated by Aura, Inc., under NASA contract NAS5-26555. The Arecibo Observatory is operated by SRI International under a cooperative agreement with the National Science Foundation (AST-1100968), and in alliance with Ana G. Méndez-Universidad Metropolitana, and the Universities Space Research Association. *Galaxy Evolution*

Explorer (GALEX) is a NASA Small Explorer, launched in 2003 April. We gratefully acknowledge NASA’s support for construction, operation, and science analysis for the *GALEX* mission, developed in cooperation with the Centre National d’Etudes Spatiales of France and the Korean Ministry of Science and Technology. This research made use of NASA’s Astrophysical Data System, the NASA/IPAC Extragalactic Database which is operated by the Jet Propulsion Laboratory, California Institute of Technology, under contract with the National Aeronautics and Space Administration, and Montage, funded by the NASA’s Earth Science Technology Office, Computation Technologies Project, under Cooperative Agreement Number NCC5-626 between NASA and the California Institute of Technology. Montage is maintained by the NASA/IPAC Infrared Science Archive.

Facilities: *HST*, *GALEX*, *Spitzer*, WIYN, EVLA.

REFERENCES

- Begum, A., Chengalur, J. N., Karachentsev, I. D., Sharina, M. E., & Kaisin, S. S. 2008, *MNRAS*, **386**, 1667
- Bell, E. F., & Kennicutt, R. C., Jr. 2001, *ApJ*, **548**, 681
- Bigiel, F., Leroy, A., Walter, F., et al. 2008, *AJ*, **136**, 2846
- Bigiel, F., Leroy, A., Walter, F., et al. 2010, *AJ*, **140**, 1194
- Bolatto, A. D., Wolfire, M., & Leroy, A. K. 2013, *ARA&A*, **51**, 207
- Boselli, A., Boissier, S., Cortese, L., et al. 2009, *ApJ*, **706**, 1527
- Buat, V., Iglesias-Páramo, J., Seibert, M., et al. 2005, *ApJL*, **619**, L51
- Burgarella, D., Buat, V., & Iglesias-Páramo, J. 2005, *MNRAS*, **360**, 1413
- Cannon, J. M., Giovanelli, R., Haynes, M. P., et al. 2011, *ApJL*, **739**, LL22
- da Silva, R. L., Fumagalli, M., & Krumholz, M. 2012, *ApJ*, **745**, 145
- Eldridge, J. J. 2012, *MNRAS*, **422**, 794
- Elmegreen, B. G. 2011, in *EAS Publications Ser.* 51, 3
- Fazio, G. G., Hora, J. L., Allen, L. E., et al. 2004, *ApJS*, **154**, 10
- Filho, M. E., Sánchez Almeida, J., Amorín, R., et al. 2016, *ApJ*, **820**, 109
- Fisher, J. R., & Tully, R. B. 1975, *A&A*, **44**, 151
- Fumagalli, M., da Silva, R. L., & Krumholz, M. R. 2011, *ApJL*, **741**, L26
- Giovanelli, R., & Haynes, M. P. 1988, in *Galactic and Extragalactic Radio Astronomy* (2nd ed.; Berlin: Springer-Verlag), 522
- Giovanelli, R., Haynes, M. P., Kent, B. R., et al. 2005, *AJ*, **130**, 2598
- Hagen, C., Cannon, J. M., Cave, I., et al. 2014, in *American Astronomical Society Meeting Abstracts*, **223**, 355.16
- Hao, C.-N., Kennicutt, R. C., Johnson, B. D., et al. 2011, *ApJ*, **741**, 124
- Haurberg, N. C. 2013, PhD thesis, Indiana Univ.
- Haurberg, N. C., Salzer, J. J., Cannon, J. M., & Marshall, M. V. 2015, *ApJ*, **800**, 121
- Haynes, M. P., Giovanelli, R., Martin, A. M., et al. 2011, *AJ*, **142**, 170
- Huang, S., Haynes, M. P., Giovanelli, R., & Brinchmann, J. 2012, *ApJ*, **756**, 113
- Hunter, D. A., Ficut-Vicas, D., Ashley, T., et al. 2012, *AJ*, **144**, 134
- Jörsäter, S., & van Moorsel, G. A. 1995, *AJ*, **110**, 2037
- Kennicutt, R. C., & Evans, N. J. 2012, *ARA&A*, **50**, 531
- Kennicutt, R. C., Jr. 1983, *ApJ*, **272**, 54
- Kennicutt, R. C., Jr. 1998a, *ARA&A*, **36**, 189
- Kennicutt, R. C., Jr. 1998b, *ApJ*, **498**, 541
- Kirby, E. M., Koribalski, B., Jerjen, H., & López-Sánchez, Á. 2012, *MNRAS*, **420**, 2924
- Krumholz, M. R. 2012, *ApJ*, **759**, 9
- Krumholz, M. R. 2013, *MNRAS*, **436**, 2747
- Lee, J. C., Gil de Paz, A., Tremonti, C., et al. 2009, *ApJ*, **706**, 599
- Lee, J. C., Veilleux, S., McDonald, M., & Hilbert, B. 2016, *ApJ*, **817**, 177
- Leroy, A. K., Walter, F., Brinks, E., et al. 2008, *AJ*, **136**, 2782
- Marshall, M. 2013, in *American Astronomical Society Meeting Abstracts*, **221**, 352.05
- Martin, A. M., Papastergis, E., Giovanelli, R., et al. 2010, *ApJ*, **723**, 1359
- Martin, D. C., Fanson, J., Schiminovich, D., et al. 2005, *ApJL*, **619**, L1
- Masters, K. L. 2005, PhD thesis, Cornell Univ.
- McMullin, J. P., Waters, B., Schiebel, D., Young, W., & Golap, K. 2007, *adass*, **376**, 127
- McNichols, A. T., Teich, Y. G., Nims, E., et al. 2016, *ApJ*, **832**, 89
- McQuinn, K. B. W., Cannon, J. M., Dolphin, A. E., et al. 2014, *ApJ*, **785**, 3
- McQuinn, K. B. W., Cannon, J. M., Dolphin, A. E., et al. 2015a, *ApJ*, **802**, 66

³¹ <http://www.python.org>

- McQuinn, K. B. W., Skillman, E. D., Dolphin, A. E., & Mitchell, N. P. 2015b, *ApJ*, **808**, 109
- Meurer, G. R., Wong, O. I., Kim, J. H., et al. 2009, *ApJ*, **695**, 765
- Michałowski, M. J., Gentile, G., Hjorth, J., et al. 2015, *A&A*, **582**, A78
- Momose, R., Koda, J., Kennicutt, R. C., Jr., et al. 2013, *ApJL*, **772**, L13
- Morrissey, P., Conrow, T., Barlow, T. A., et al. 2007, *ApJS*, **173**, 682
- Ott, J., Stilp, A. M., Warren, S. R., et al. 2012, *AJ*, **144**, 123
- Roychowdhury, S., Chengalur, J. N., Begum, A., & Karachentsev, I. D. 2009, in ASP Conf. Ser. 407, *The Low-Frequency Radio Universe*, ed. D. J. Saikia et al. (San Francisco, CA: ASP), 106
- Roychowdhury, S., Chengalur, J. N., Kaisin, S. S., Begum, A., & Karachentsev, I. D. 2011, *MNRAS*, **414**, L55
- Roychowdhury, S., Chengalur, J. N., Kaisin, S. S., & Karachentsev, I. D. 2014, *MNRAS*, **445**, 1392
- Roychowdhury, S., Huang, M.-L., Kauffmann, G., Wang, J., & Chengalur, J. N. 2015, *MNRAS*, **449**, 3700
- Salim, S., Rich, R. M., Charlot, S., et al. 2007, *ApJS*, **173**, 267
- Schlafly, E. F., & Finkbeiner, D. P. 2011, *ApJ*, **737**, 103
- Schlegel, D. J., Finkbeiner, D. P., & Davis, M. 1998, *ApJ*, **500**, 525
- Schmidt, M. 1959, *ApJ*, **129**, 243
- Schruba, A., Leroy, A. K., Walter, F., et al. 2012, *AJ*, **143**, 138
- Schruba, A., Leroy, A. K., Walter, F., Sandstrom, K., & Rosolowsky, E. 2010, *ApJ*, **722**, 1699
- Skillman, E. D. 1987, in NASA Conf. Publication 2466, 263
- Swaters, R. A., van Albada, T. S., van der Hulst, J. M., & Sancisi, R. 2002, *A&A*, **390**, 829
- Taylor, C. L., Kobulnicky, H. A., & Skillman, E. D. 1998, *Magellanic Clouds and Other Dwarf Galaxies*
- Walter, F., Brinks, E., de Blok, W. J. G., et al. 2008, *AJ*, **136**, 2563
- Warren, S. R., Molter, E., Cannon, J. M., et al. 2015, *ApJ*, **814**, 30
- Weisz, D. R., Johnson, B. D., Johnson, L. C., et al. 2012, *ApJ*, **744**, 44
- Werner, M. W., Roellig, T. L., Low, F. J., et al. 2004, *ApJS*, **154**, 1
- Wyder, T. K., Martin, D. C., Barlow, T. A., et al. 2009, *ApJ*, **696**, 1834
- Wyder, T. K., Martin, D. C., Schiminovich, D., et al. 2007, *ApJS*, **173**, 293