

Toward Understanding the Molecular Bases of Stretch Activation

A STRUCTURAL COMPARISON OF THE TWO TROPONIN C ISOFORMS OF LETHOCERUS*

Received for publication, March 10, 2016, and in revised form, May 18, 2016. Published, JBC Papers in Press, May 20, 2016, DOI 10.1074/jbc.M116.726646

Domenico Sanfelice[‡], Máximo Sanz-Hernández[§], Alfonso de Simone[§], Belinda Bullard[¶], and Annalisa Pastore^{‡||1}

From the [‡]Department of Clinical and Basic Neurosciences, Wohl Institute, King's College, London SE5 3RT, United Kingdom, the

[§]Department of Life Sciences, Imperial College, London SW7 2AZ, United Kingdom, the [¶]Department of Biology, University of York, York YO10 5DD, United Kingdom, and the ^{||}Department of Molecular Medicine, Università of Pavia, Pavia I27100, Italy

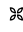
Muscles are usually activated by calcium binding to the calcium sensory protein troponin-C, which is one of the three components of the troponin complex. However, in cardiac and insect flight muscle activation is also produced by mechanical stress. Little is known about the molecular bases of this calcium-independent activation. In *Lethocerus*, a giant water bug often used as a model system because of its large muscle fibers, there are two troponin-C isoforms, called F1 and F2, that have distinct roles in activating the muscle. It has been suggested that this can be explained either by differences in structural features or by differences in the interactions with other proteins. Here we have compared the structural and dynamic properties of the two proteins and shown how they differ. We have also mapped the interactions of the F2 isoform with peptides spanning the sequence of its natural partner, troponin-I. Our data have allowed us to build a model of the troponin complex and may eventually help in understanding the specialized function of the F1 and F2 isoforms and the molecular mechanism of stretch activation.

Mechanical stress is an important element in cellular processes as different as muscle contraction, external mechanical loading, cell migration, and protein aggregation and misfolding. Among these processes, muscle contraction involves considerable stress that results from the relative movement of parallel thick and thin filaments (1), respectively formed predominantly of myosin and actin. Cyclic interaction of the motor domain of myosin with actin propels the sliding filaments. In striated muscle, the interaction of myosin with actin is controlled by tropomyosin (Tm)² and troponin (Tn), which are periodically arranged along the thin filaments (2, 3). The Tn complex has three subunits: TnT binds to Tm, TnI binds to actin and holds

Tm in a blocking position, and TnC binds Ca²⁺ and detaches TnI from actin, allowing Tm to move. TnI and TnT are intrinsically unfolded in isolation but become mostly helical upon ternary complex formation (4, 5). TnC has a typical dumbbell structure with two globular domains, each of which contains two EF-hand motifs (6). In relaxed muscle, the interaction between myosin and actin is blocked by Tm (3, 7–9). Ca²⁺ influx triggers a conformational transition of Tn, which releases the inhibition by displacing Tm and exposing the myosin-binding sites according to the so called steric blocking model (3). In addition to Ca²⁺ activation, all striated muscles are also activated by mechanical stress. When an active muscle is stretched, it produces more force after a short delay (10, 11). This additional activation is particularly prominent in cardiac muscle and in the indirect flight muscle (IFM) of insects (12, 13). The mechanism by which fibers sense stretch is not known, despite its importance for a basic understanding of muscle contraction and for its implications for myopathies. Insect flight muscle is an extreme example showing stretch activation, making IFM an ideal model system. Insect wings are moved by opposing pairs of muscles acting alternately, with one muscle contracting and shortening while the other is stretched (14–16). Previous work has shown that stretch activation in IFM works by the steric blocking mechanism in which Tn plays an important role (17, 18). TnC is present in IFM in two isoforms. The major one (90%), F1TnC, binds a single Ca²⁺ ion in EF-hand 4 and is needed for the response of IFM to stretch (14, 19). The minor isoform, F2TnC, is only 10% of the TnC and binds two Ca²⁺ ions in EF-hands 2 and 4 (14, 19). Mechanical measurements with *Lethocerus* IFM fibers in which TnC isoforms were exchanged suggest that F1TnC is important for stretch activation, whereas F2TnC is required for calcium-activated isometric tension (14, 20). This difference in properties was suggested to be due to structural differences or to formation of different interactions with other proteins (20). The structure of F1TnC was solved. The most noticeable difference from TnC in vertebrate muscle is that binding of only one Ca²⁺ in the fourth EF-hand motif is sufficient to induce a closed to open conformational transition in the C-terminal lobe (19, 21). Much less is known about F2TnC, making it difficult to test these hypotheses.

To fill the gap and gain further understanding of stretch activation, we focused here on F2TnC. Using an NMR study, we compared structural and dynamic properties of this protein

* This work was supported by BBSRC, EPSRC, and British Heart Foundation grants. The authors declare that they have no conflicts of interest with the contents of this article.

 Author's Choice—Final version free via Creative Commons CC-BY license. Virtually full backbone assignments were deposited in the BRMB database under entry numbers 25897, 25878, and 25875 for holo full-length F2TnC and the N and C lobes, respectively. The assignments of the apo N and C lobes are under entry numbers 25880 and 25879.

¹ To whom correspondence should be addressed: Institute of Psychiatry, Psychology, and Neuroscience, Div. of Neuroscience, Maurice Wohl Clinical Neuroscience Institute, King's College London, 5 Cutcombe Rd., Camberwell, London SE5 9RX, UK. E-mail: annalisa.1.pastore@kcl.ac.uk.

² The abbreviations used are: Tm, tropomyosin; Tn, troponin; IFM, indirect flight muscle; MD, molecular dynamics; HSQC, heteronuclear single quantum coherence.

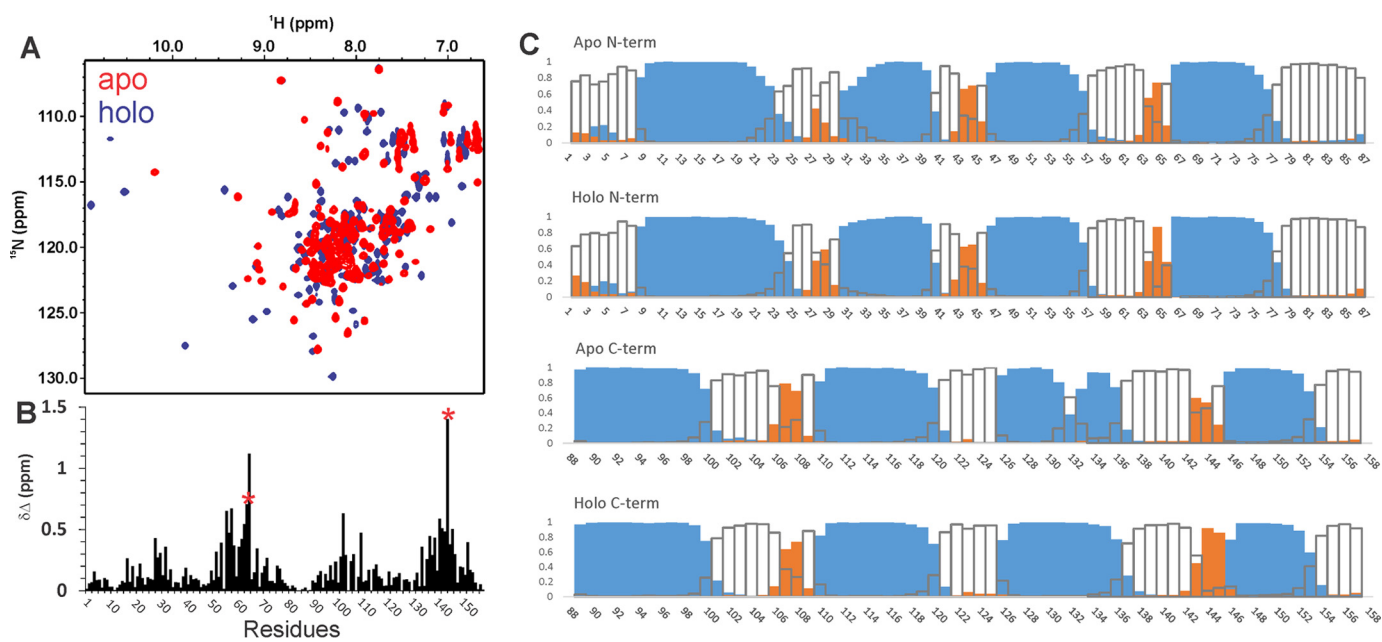


FIGURE 1. Differences between the spectra of apo and holo F2TnC. **A**, spectrum superposition of the two proteins with the holo form in blue and the apo one in red. **B**, plot of the secondary structure along the sequence as suggested by the Talos program, calculated on backbone chemical shifts. Cyan columns indicate helical regions, orange columns β sheet regions, and empty columns random coil conformations. **C**, chemical shift perturbation upon calcium binding. Leu-65 and Val-144, which are in position 8 of the respective calcium binding loops according to the canonical EF-hand loop numbering, are indicated with red stars. Residues Glu-66 and Val-144 present the highest values.

with those of F1TnC. We also map the interactions of F2TnC with TnH (the *Lethocerus* equivalent of TnI) using synthetic peptides and the reconstructed ternary complex. Our data show that, although the two isoforms have a similar structure, they have distinct dynamic behavior in solution, which may have profound consequences on how the two isoforms function and on their mechanical properties.

Results

Comparison between the Calcium-loaded and Calcium-free Forms of F2TnC—The NMR ^1H , ^{15}N HSQC spectra of apo and holo F2TnC both have good spectral dispersions, indicating that they are intrinsically structured also in the absence of Ca^{2+} (Fig. 1A). This is in contrast to the behavior of the C lobe of skeletal muscle TnC, which is unstructured in the absence of Ca^{2+} and has thus a spectrum with low chemical shift dispersion (22). The secondary structure content is consistent with these observations. As evidenced by plotting the secondary structure calculated by the Talos program (23), it is clear that both apo and holo forms are helical with a content that is comparable (Fig. 1B). The role of calcium is thus not structural because F2TnC is folded also in the absence of the cation.

Calcium induces clear chemical shifts only in some resonances around EF-hands 2 and 4, which is where calcium binds (6) (Fig. 1C). The two other coordination sites are inactive and thus expected to be unaffected by Ca^{2+} . The chemical shift variations between the apo and holo forms have an interesting peculiarity. Only one resonance, which corresponds to Val-144, shifts significantly and moves from the center of the spectrum of the apo to 9.9 and 127.5 ppm in the holo form. This behavior is typical for the amide of the hydrophobic residue in position 8 of the calcium binding loop according to the canonical EF-hand loop numbering and is highly diagnostic of the presence of

Ca^{2+} binding (6, 24). A smaller shift (0.6 versus 1.4 ppm in terms of $\Delta\delta$) is observed for the resonance of the corresponding position in the N lobe of EF-hand 2 (Leu-65), which contains the second calcium binding site. This is probably due to the lower affinity of this site compared with that of EF-hand 4 (93 versus 6 μM) (25). Residue Glu-66 shows an unusual chemical shift variation (1.1 ppm) that suggests a slightly different conformation of the loop and/or a distorted Ca^{2+} coordination.

Comparison of the Spectra of Full-length F2TnC and Its Fragments—To obtain further information on the protein, we produced separately the isolated N and C lobes (residues 1–88 and 89–158, respectively). Comparison of the spectra of the individual fragments shows a behavior consistent with what is observed with the full-length protein (Fig. 2). The spectra of the two lobes are well dispersed. This means that the two regions fold independently, as also observed in F1TnC (19). An interesting feature, however, is that the spectrum of the isolated C lobe is as intense as that of the isolated N lobe, whereas, in full-length F2TnC, the resonances of the C-terminal region are less intense than the N-terminal ones. This suggests different dynamic features of the two regions and the presence of a differential conformational exchange.

Superposition of the spectra of full-length F2TnC with its fragments indicates some rearrangements in the apo forms, whereas the spectra of the holo forms are almost completely additive, indicating lack of interactions between the two lobes. Additivity of the spectra of the N- and C-terminal halves of the protein is a feature common to calmodulin and most EF-hand proteins (26).

Comparisons between F1 and F2TnC Spectra—The HSQC spectra of full-length F1TnC and F2TnC show expected differences (Fig. 3) given that the two sequences share 47% identity.

Structural Comparison of the Two Troponin C Isoforms of *Lethocerus*

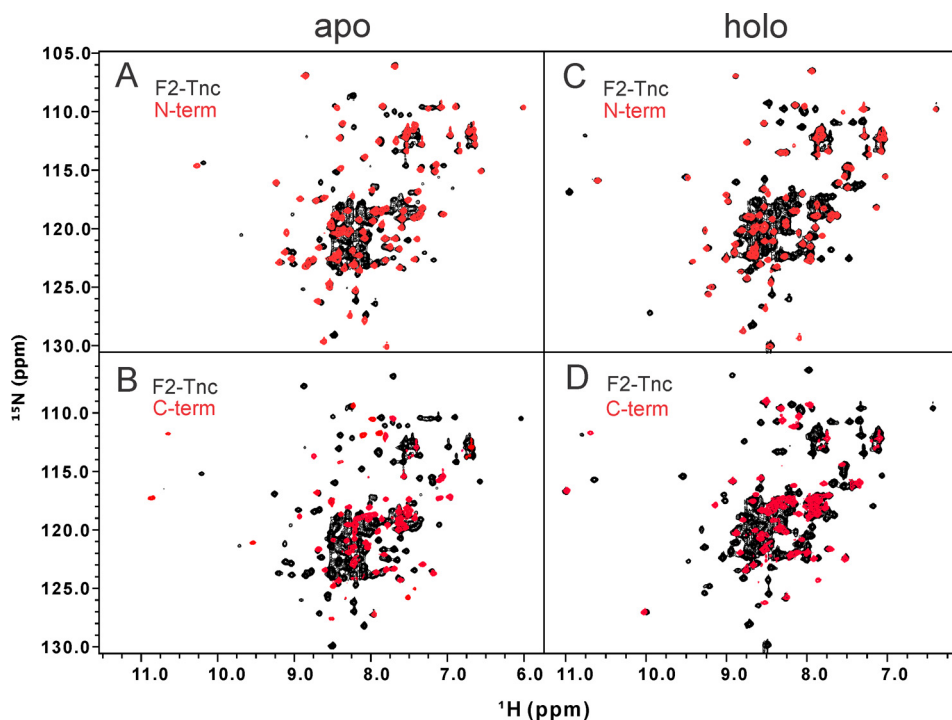


FIGURE 2. **Assessing interactions between lobes.** Comparison of the spectra of the isolated apo (A and B) and holo (C and D) forms of the N and C lobes with full-length F2TnC. In both images, full-length F2TnC is shown in *black* and the N lobe and the C lobe in *red*. The HSQCs of the holo fragments almost completely overlap on the full-length construct, indicating the absence of interaction between lobes. This is not completely true for the apo forms.

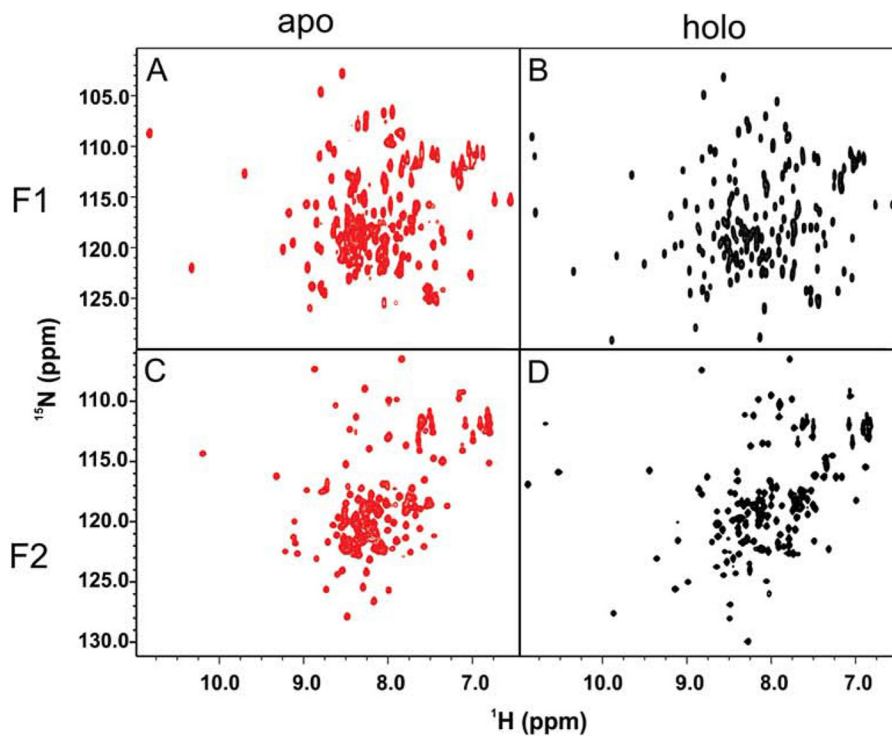


FIGURE 3. **Comparison between F1 and F2TnC.** ^{15}N HSQC spectra of the two apo and holo forms of F1 (A and B) and F2 TnC (C and D). The figure highlights the differences in calcium recognition of the two isoforms.

The spectrum of apo F2TnC has a relatively good dispersion that is overall comparable with that of apo F1TnC, suggesting a similar level of retained tertiary structure. When calcium is present, both spectra become more dispersed, but F2TnC remains slightly more collapsed. This is unexpected given the presence of two Ca^{2+} binding sites in F2TnC compared with

only one in F1TnC. Comparison between the full length and the two fragments (Figs. 2 and 3) tells us, however, that the C lobe has an excellent dispersion in the holo but not in the apo form. This strongly suggests that this lobe undergoes an appreciable closed-to-open transition, as is the case for F1TnC. More difficult is to predict at this stage whether the N lobe also changes

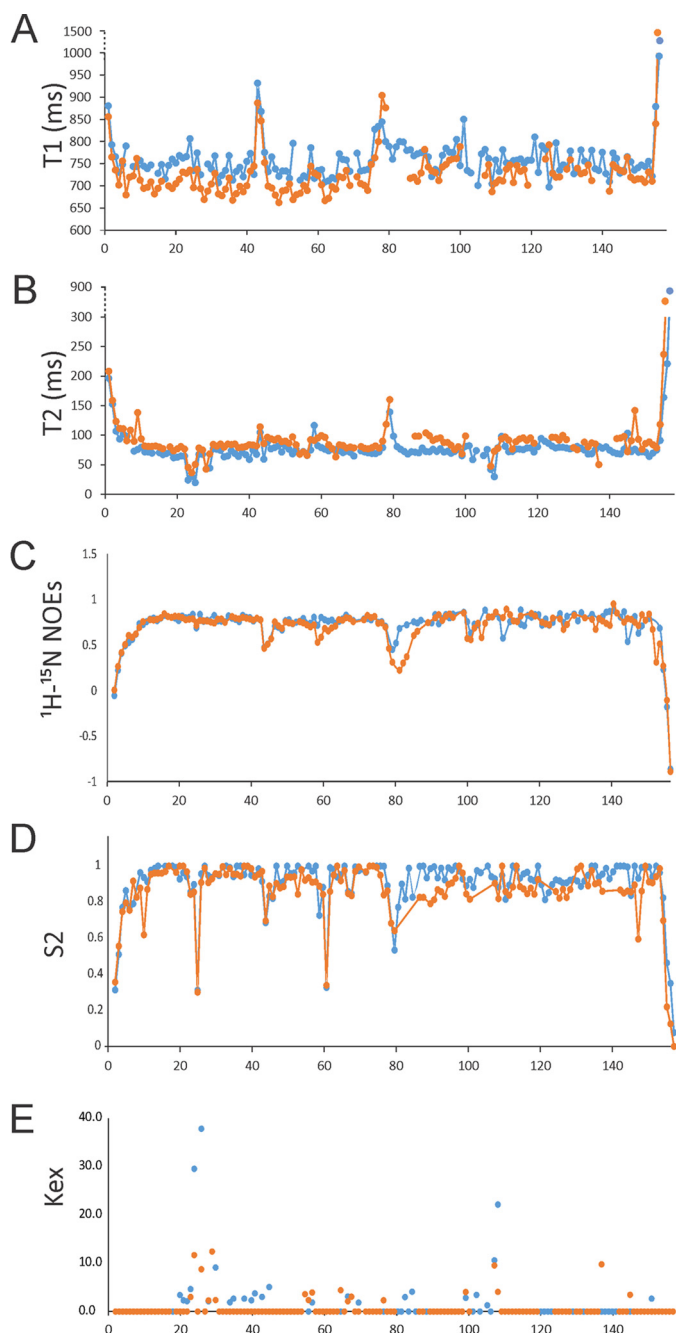


FIGURE 4. **Dynamic properties of F2TnC.** Shown are T_1 (A), T_2 (B), heteronuclear ^1H - ^{15}N NOE (C), S^2 (D), and exchange term (K_{ex} , E) values. The apo and holo forms are indicated in blue and orange, respectively.

upon calcium binding, and this will have to be assessed more carefully in the future. However, the relatively small chemical shift changes observed upon calcium addition and comparison with the spectra of apo and holo F1TnC (Figs. 1 and 3) suggest that, if at all, the conformational change will be minimal.

F1TnC and F2TnC Have Similar Dynamic Properties—We then compared the dynamic properties of F2TnC with those of the F1 isoform. T_1 , T_2 , and NOE of full-length F2TnC (Fig. 4) are overall similar to those described previously for the corresponding region of full-length holo F1TnC (19). The average T_1 value in the apo form calculated from residues with NOEs of >0.6 (that is, residues whose relaxation is not significantly

affected by internal motions) is 475.7 ± 24.0 ms; the equivalent value for the holo form is 479.8 ± 20 ms. Small deviations are observed in the loop regions, in agreement with the root mean square deviation data. Noticeable differences are instead observed for the transversal relaxation T_2 values, which are overall significantly smaller for the apo form, especially for residues in the loop regions. The average T_2 values are 115.1 ± 34.9 ms and 155.3 ± 7.25 ms for the apo and holo forms, respectively.

Most of the data could be fit satisfactorily with the simplest model (model 1). Exchange terms had to be used to fit a few residues that typically are in loops 1 and 3 of the EF-hands. This is consistent with these loops not being able to bind to calcium. The loop connecting the two lobes is also overall more flexible. We estimated a correlation time (τ_c) of 8.4 ns for the full-length apo protein, whereas that of the holo form is slightly longer (9.4 ns). The τ_c of the isolated apo N and C lobes are 4.7 and 5.8 ns, respectively. The corresponding values for the holo forms are 4.2 and 5.6 ns, respectively. These values are comparable with the values found for F1TnC (19). These data indicate that, independently of the presence of calcium, F2TnC is formed by two compact and relatively rigid globular lobes.

Interaction of F2TnC with TnH/TnI—Having complete assignment of the spectra of F2TnC, we could now map the regions of the protein affected by titration of ^{15}N -labeled TnC with two insect TnH/TnI peptides, TnH(30–61) and TnH(126–159). They were designed by homology with regions affected in the interaction in vertebrates (19). TnH(30–61) binds to F2TnC with a K_d of 8 nM in the presence of Ca^{2+} , whereas K_d values of 40 nM were found in the absence of Ca^{2+} or in the presence of the more weakly coordinated Mg^{2+} (25). For comparison, F1TnC binds the same peptide with K_d values of 2 and 0.9 nM in the absence and presence of Ca^{2+} , respectively. The affinities of TnH(126–159) for F1TnC and F2TnC are almost the same and around 13 and 3 μM in the absence and presence of Ca^{2+} , respectively.

We carried out the titrations both with full-length holo F2TnC and with the isolated holo N and C lobes because the fragments have intrinsically more resolved spectra. The results show qualitatively the same behavior, confirming that the N and C lobes work independently.

The two peptides affect the spectra in a very different way. Upon titration of F2TnC with TnH(31–60), several resonances do not shift but double, indicating the co-detection of the peptide-bound and unbound forms of the proteins (Fig. 5A). This happens already at molar ratios of TnC(31–60):F2TnC below 1:1 and means that these resonances are in a slow exchange regime in the NMR time scale as expected for a tight binding. The affected resonances mostly belong to the C lobe. The unbound form progressively disappears, leaving only the bound form. Some changes are also visible in peaks belonging to the N lobe, but they are in a fast exchange regime of binding because they experience chemical shift perturbation. This tells us that TnH(30–61) binds to both lobes but with different affinities. Binding occurs preferentially on the C lobe, but the N lobe is also able to bind.

TnH(126–159) preferentially binds the N lobe in a fast exchange regime (Fig. 5, B and C). Some minor perturbation of

Structural Comparison of the Two Troponin C Isoforms of *Lethocerus*

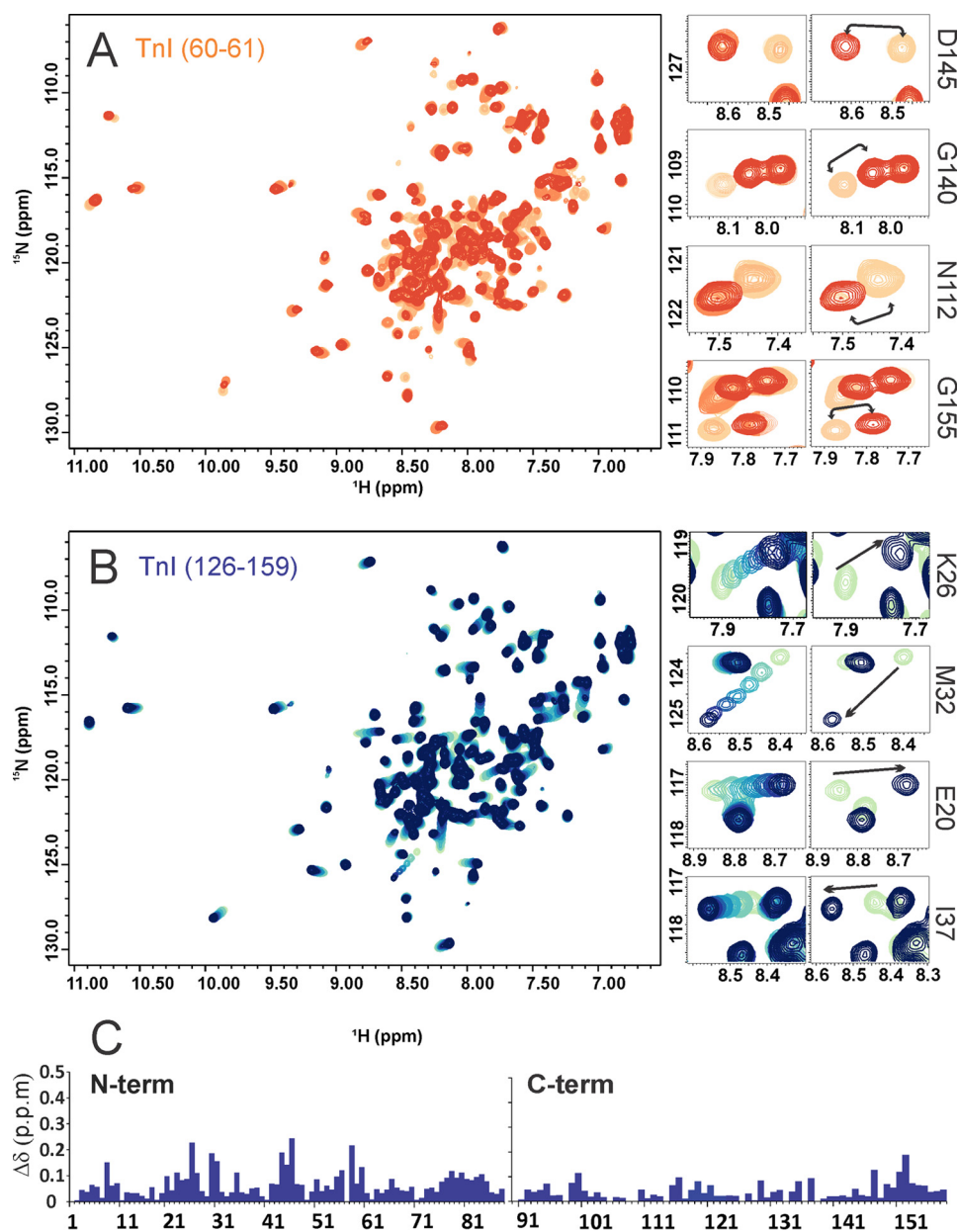


FIGURE 5. Testing the interactions of TnH/TnI with F1TnC. Shown are the effects of the TnH peptide titrations on F2TnC. *A*, *left panel*, spectrum of full-length holo F2TnC titrated with TnH(30–61). *Center small panels (All)*, close-ups of specific peaks, all belonging to the C lobe, followed throughout the titration. The spectra are progressively colored from *orange* (the starting point) to *red* (final point). The spectra clearly show that the peaks do not move during the titration. Close-ups (*right panels, 1:3*) of the starting (*orange*) and the final points for the same peaks shown before to highlight the overall displacement (*black arrows*). *B*, spectrum of holo full-length F2TnC titrated with TnH(126–159) (*left panel*). Close-ups of specific peaks, all belonging to the N lobe, followed throughout the titration (*center small panels*). They are color-coded using progressive shades of *blue* from the first (*light green*) to the last (*dark blue*) titration point, clearly showing a progressive chemical shift. The same peaks are shown at the beginning and final points of the titration (*small right panels, 1:3*). *C*, histogram of the chemical shift perturbation caused by TnH(126–159) on the two F2TnC fragments. It is clear that most of the shifts affect the N lobe. The spectra were all recorded at 25 °C and 600 MHz.

the C lobe is observed but only at high molar ratios (5:1). The behavior of F2TnC is thus distinct both from F1 and vertebrate TnCs (27, 28) but overall more similar to the cardiac and skeletal proteins than to the F1isoform.

Modeling the *Lethocerus* Tn Heterotrimer—Reassured by our analysis, we modeled the structure of the *Lethocerus* F2-Tn complex using the coordinates of both the vertebrate skeletal and cardiac complexes as templates (PDB codes 1YTZ and 1J1D). These are currently the only two high-resolution structures available for the Tn trimer, probably because the intrinsic

flexibility of all the components makes this complex unsuited for crystallization. The two structures greatly differ for the orientation of TnC relative to the TnI and TnT chains. We first considered calcium-loaded skeletal muscle 1YTZ. Compared with the sequences of this complex, *Lethocerus* TnC and TnH/TnI do not have major insertions or deletions (Fig. 6, A–C). Standard homology modeling could thus be used to build their structures. In contrast, *Lethocerus* TnT presents three insertions that are too large to be modeled with standard loop modeling methods (29). Additionally, one of the insertions is in the

Structural Comparison of the Two Troponin C Isoforms of *Lethocerus*

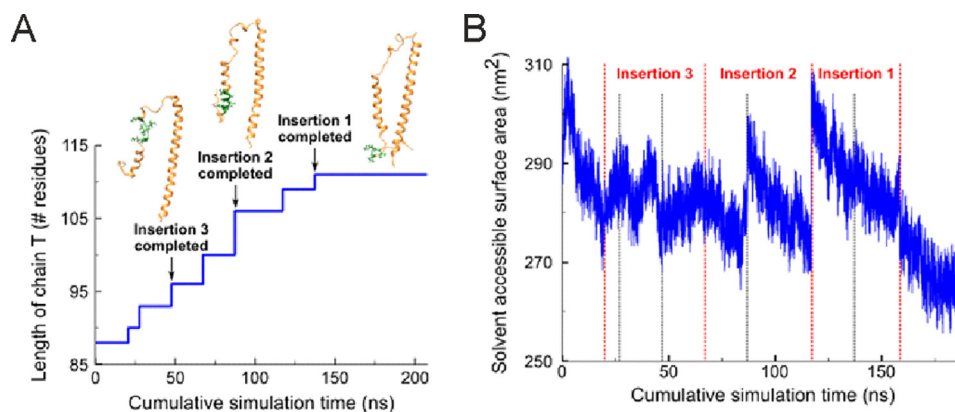


FIGURE 7. Gap growing process of *Lethocerus* TnT. *A*, residues were introduced iteratively at the insertions, allowing the system to relax after each addition. *B*, evolution of the solvent-accessible surface area of the Tn trimer during the gap growing process. *Discontinuous lines* represent the addition of new residues. Growing the chain generally causes abrupt increases in the solvent-accessible surface area, which decreases as the system relaxes to adopt a more globular structure during the MD runs. After completing every major insertion, the system was simulated until the solvent-accessible surface area decreased back to the initial reference value (pre-insertions), indicating that the overall globular fold of the complex has been conserved.

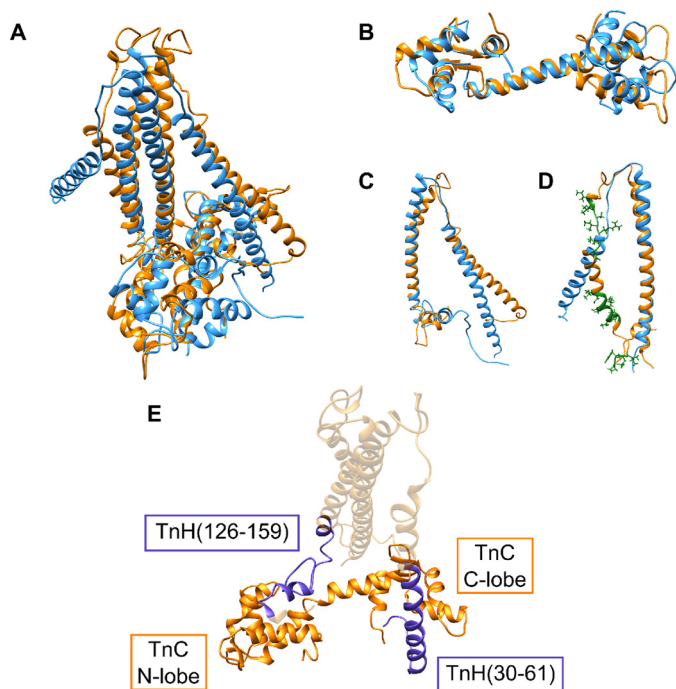


FIGURE 8. Structural comparison between the *Lethocerus* Tn complex and vertebrate x-ray structures. *A*, structural superposition of the template structure of the skeletal Tn trimer 1YTZ (blue) and the *Lethocerus* model (orange). *B–D*, superposition of the individual chains TnC (*B*), TnH/TnI (*C*), and TnT (*D*). Large insertions modeled by iterative gap growing are shown in green. *E*, mapping of the TnH peptides (purple) onto the trimer structure, showing their interactions with TnC.

are involved in cardiomyopathies. Several mechanisms have been suggested to explain it (17, 30–36), but none have been proven. The identification of two isoforms of TnC in IFM, F1TnC, which is necessary for stretch activation and oscillatory contraction, and F2TnC for development of isometric force, suggested that a study of the structure of the isoforms could increase our understanding of two distinct activation mechanisms. F1TnC was extensively characterized in the past, and its structure in solution was solved (19, 21). It was found to bind only one calcium atom in EF-hand 4, which undergoes a closed-to-open conformational change upon calcium binding. Only

qualitative information was instead known previously for F2TnC.

This paper describes a comparison between F1 and F2TnC. We have now obtained full assignment of the backbone atoms both for full-length F2TnC and for the separate N and C lobes. The spectra of the fragments offer of course a better resolution. Given that the two chains are both EF-hand proteins and share a high level of sequence similarity, their different mechanical behavior cannot be explained by a different fold and must be linked to other properties, such as stability, dynamic behavior, or interactions. We provide a clear answer to account for all of these aspects.

F2TnC is overall more stable than F1TnC, having melting points of 40.6 °C and 74.6 °C for the apo and holo forms (25), respectively. Observation of single transitions suggests that the two lobes have similar stabilities. For comparison, the melting temperatures of apo F1TnC are 37.5 °C and 62.4 °C, respectively, whereas holo F1TnC undergoes an apparent single transition at a temperature of 56.5 °C. The difference in stability might have direct consequences on the mechanical properties of the two proteins.

An important difference between F1 and F2 TnC is their affinity for Ca²⁺. Both isoforms bind a single Ca²⁺ in EF-hand 4 in the C lobe, but the affinity of F1TnC for Ca²⁺ is 16 times that of F2TnC. The Ca²⁺ affinity of EF-hand 2 in the N lobe of F2TnC is low, and the ion is exchangeable under physiological conditions. This is consistent with the finding that the optimal Ca²⁺ concentration for stretch activation is *p*Ca 6, whereas maximal isometric force is produced at *p*Ca 4.5 (15). The Ca²⁺ affinities effectively separate the action of F1 and F2TnC in the muscle fiber. However, the optimal Ca²⁺ concentration needed for stretch activation and development of isometric force is controversial. Other workers have found that *p*Ca 4.5 is needed for both stretch-activated and isometric contraction in *Lethocerus* (37) and *Drosophila* (38). The function of the C lobe in both isoforms is to anchor the N-terminal region of TnH. Although EF-hand 4 of F1TnC shows a small closed-to-open conformational change on binding Ca²⁺, binding of TnH(30–61) is not Ca²⁺-sensitive (22). A constant priming level of Ca²⁺ is necessary for stretch-activated contraction; removal of Ca²⁺

eliminates the response. However, it is not clear how F1TnC is turned off during the relaxation phase of oscillatory contractions, when the level of Ca^{2+} in the fiber remains constant. The N lobe of F1TnC is required for stretch activation, although it does not bind Ca^{2+} or TnH (19, 21).

The most striking difference between the two isoforms is in their ability to recognize TnH/TnI. The N lobe of F1TnC is not engaged in interactions with TnH/TnI, excluding the regulatory role for this domain observed in vertebrate TnC (19). The C lobe can bind both TnH(30–61) and TnH(126–159), which spans the sequence corresponding to the inhibitory and switch regions of vertebrate TnI, in a calcium-independent way (22). F2TnC has instead two distinct binding sites for TnH/TnI. It binds to TnH(30–61) with nanomolar affinity, which increases 5 times in the presence of Ca^{2+} (22). The N lobe can also bind this peptide but with lower affinity. TnH(126–159) binds preferentially the N lobe of F2TnC with micromolar affinity, which is 4 times greater in the presence of Ca^{2+} (25). Our results thus point toward an overall closer similarity between the complex of the F2 *Lethocerus* isoform and vertebrate cardiac and skeletal Tn, whereas F1TnC has distinct features. The differences between F1 and F2TnC could not have been anticipated on the basis of their sequences given the sequence similarity between them and, in general, all EF-hand proteins.

The information obtained from mapping our titrations onto the sequence of F2TnC allowed us to build a model for the hetero Tn trimer. This would be an easy task if the sequences could be aligned without major insertions/deletions, as is the case for TnC and TnH/TnI. TnT is quite different because the *Lethocerus* sequence is longer and the sequence alignment predicts an insertion in a region that would require a break in a helix. The insertion is too long to use standard comparative modeling methods (e.g. loop building). We thus used an iterative process that accommodates insertions in a gradual way without major perturbations of the overall structure. We were able to generate two different models of the complex based on the available high-resolution vertebrate structures. Although differing in the relative orientation of the TnC lobes, both models are stable throughout our MD sampling and compatible with all the information obtained, providing a starting point for future structural studies of the Tn complex. The resulting structural alignment (that is, the alignment based on the spatial correspondence of the chains rather than that obtained by maximizing the number of residue matches) is structurally reasonable as it places the insertion in the loop of the TnT hairpin, keeping the integrity of the secondary structure. As a result of this process, the relative angle between the two arms of the TnT hairpin changes slightly, and the head of the TnC dumbbell is forced to turn to avoid a clash with TnT.

Is this the correct structure of the F2-Tn complex in the sarcomere? We do not know at this stage, but, on the other hand, this is true also for the available crystal structures. The troponin complex is not made of rock-like globular proteins but of flexible chains that will be strongly influenced by the environment. Nevertheless, this and the crystal structures are excellent and indispensable starting points to use, for example, in validation-based fluorescence polarization studies (39, 40), which have been shown to be so successful for cardiac muscle.

In conclusion, our findings are clearly sufficient to explain how the role of the two complexes in muscle activation can be fine-tuned through their different properties and demonstrate again the incredible adaptability of the EF-hand fold to different functions. Our data also provide the rational basis for further studies that will finally allow us to understand the molecular mechanism of stretch activation.

Experimental Procedures

Sample Preparation—Full-length *Lethocerus* F2TnC and the two isolated N and C lobes, spanning residues 1–88 and 88–158, respectively, were produced by overexpression in *Escherichia coli*. The purification procedure was the same as the ones described previously (25). In short, all constructs were cloned in a pET24d (M11) expression vector (Novagen) containing an N-terminal hexahistidine tag followed by a tobacco etch virus protease cleavage site. The overexpressed proteins were purified by affinity using nickel-nitrilotriacetic acid resin (Qiagen) in two steps separated by an overnight tag cleavage step using in-house produced tobacco etch virus protease. The proteins were then passed through a size exclusion Superdex75 column in 20 mM Tris-HCl buffer at pH 6.8 with 100 mM KCl to remove any high molecular weight contaminants. Proteins were then concentrated on Vivaspin to 0.8 mM samples. Calcium depletion was achieved by a Chelex100 resin (Sigma) and adding 250 mM EDTA to the solution. The holo samples were obtained by adding a 5-fold molar excess of CaCl_2 .

Spectral Assignment—NMR spectra of F2TnC were acquired on ^{15}N or $^{15}\text{N}/^{13}\text{C}$ uniformly labeled samples at 0.8 mM concentration in 90%/10% $\text{H}_2\text{O}/\text{D}_2\text{O}$ and 20 mM Tris-HCl buffer (pH 6.8) and 100 mM KCl. All spectra were recorded at 25 °C on Bruker Avance II spectrometers operating at 600 or 800 MHz proton frequencies and equipped with 5-mm triple-resonance cryoprobes. ^{15}N HSQC, HNCA, HN(CO)CA, HNCO, and HNCACB experiments were employed to obtain sequence specific ^1H , ^{15}N , $^{13}\text{C}\alpha$, $^{13}\text{C}\beta$, and $^{13}\text{C}'$ full backbone assignments both on the full-length protein and the two fragments (41). Water was suppressed by the classical WATERGATE sequence (42). The spectra were processed and analyzed using NMRPipe (43) and NMRview (OneMoon Scientific). The ^1H water signal was referenced at 4.76 ppm at 25 °C. The spectra were typically processed by applying a Gaussian window function and zero filled twice.

Relaxation Parameters—NOEs and longitudinal (T_1) and transversal (T_2) relaxation times were measured at 25 °C using a 0.8 mM sample on a Bruker Avance spectrometer operating at 600 MHz (22, 44). Eight (10, 100, 250, 500, 750, 1000, 1500, and 1800 ms) and eight (8, 16, 32, 48, 80, 128, 160, and 240 ms) spectra were recorded for the T_1 and T_2 measurements, respectively. T_1 and T_2 values were obtained by non-linear least squares fitting of the peak intensities to an exponential function. The analysis of Lipari and Zsabo (45) was carried out using Tensor2 software (46). Five possible models were tested iteratively for each amide proton. The data were fit with the order parameter S^2 only (model 1); with S^2 and the internal correlation time τ_i (model 2); with S^2 and a chemical exchange Rex term (model 3); with S^2 , τ_1 , and R_{ex} (model 4); or with Sf_2 , Ss_2 , and τ_i (model 5), where the order parameter is split into two terms that correspond to a fast and a slow motion component.

Structural Comparison of the Two Troponin C Isoforms of *Lethocerus*

An initial estimate of the correlation time was obtained by removing all residues that contained a chemical exchange term. The estimated value was then carried out to fit every residue to the best model. Isotropic tumbling was assumed.

Peptide Titrations—¹⁵N-labeled samples of F2TnC were individually titrated with two synthetic peptides, TnH(30–61) and TnH(126–159). The concentrations of highly concentrated stock solutions of the peptides, in 100 mM KCl and 20 mM Tris-HCl, were measured in triplicate copies by amino acid analysis. The pH was adjusted to 6.8 with small additions of a 0.01 M NaOH solution. The pH was checked after the final peptide addition to make sure that it had remained constant throughout the titration. Complex formation was probed by recording ¹H,¹⁵N HSQC spectra acquired at 600 MHz on an Advanced Bruker spectrometer equipped with a cryoprobe. The final molar ratios were 1:4 F2TnC:TnH peptide.

Structure Modeling—Structure modeling was carried out using the coordinates of the vertebrate skeletal and cardiac complexes as templates (PDB codes 1YTZ and 1J1D). We used a standard homology modeling protocol to build the TnC and TnH/TnI structures and an iterative gap growing process for TnT (47). Firstly, the *Lethocerus* sequence of chain T was built onto the template structure with the insertions missing. The trimer was then equilibrated in water for 20 ns before starting the gap growing process. Residues were then introduced at the insertions (2–5 at each time), allowing the system to relax after each addition with MD runs of 10–30 ns. Local secondary structure elements present at the inserted positions were conserved when introducing the new residues. Insertion 3 was modeled first, followed by insertion 2 and insertion 1.

Simulations of the two modeled trimers were carried out with the AMBER99SB-ILDN force field (48) solvated in Tip3p waters (49, 50). The system was equilibrated in water at 300 K with position restraints (force constant of 1000 kJ mol⁻¹ nm⁻²) on the trimers for 10 ns and then simulated for 20 ns before starting the growing process. Every time new residues were inserted, the size of the box was readjusted and the system resolvated. Simulations were carried out with an integration step of 2 fs under periodic boundary conditions and LINCS constraints (51). Electrostatic interactions were calculated using the particle mesh Ewald method (52). All simulations were performed assuming constant number of particles, pressure, and temperature, coupling temperature with the V-rescale method (53) (coupling constant of 0.1 ps). Pressure coupling was carried out with the isotropic Berendsen method (54) (coupling constant of 1 ps, reference pressure of 1 bar). An additional simulation was carried out for 50 ns after the model was complete using a simulated annealing protocol to generate an ensemble of structures.

Author Contributions—D. S. performed all NMR experiments and analyzed the spectra. M. S. H. and A. d. S. performed the modelling. B. B. provided the plasmids and the purification know-how. A. P. analyzed the data and wrote the article.

Acknowledgment—We thank the MRC NMR Centre for technical support and access to the spectrometers.

References

1. Pringle, J. W. (1949) The excitation and contraction of the flight muscles of insects. *J. Physiol.* **108**, 226–232
2. Greaser, M. L., and Gergely, J. (1971) Reconstitution of troponin activity from three protein components. *J. Biol. Chem.* **246**, 4226–4233
3. Gordon, A. M., Homsher, E., and Regnier, M. (2000) Regulation of contraction in striated muscle. *Physiol. Rev.* **80**, 853–924
4. Hoffman, R. M., Blumenschein, T. M., and Sykes, B. D. (2006) An interplay between protein disorder and structure confers the Ca²⁺ regulation of striated muscle. *J. Mol. Biol.* **361**, 625–633
5. Blumenschein, T. M., Stone, D. B., Fletterick, R. J., Mendelson, R. A., and Sykes, B. D. (2006) Dynamics of the C-terminal region of TnI in the troponin complex in solution. *Biophys. J.* **90**, 2436–2444
6. Herzberg, O., and James, M. N. (1985) Structure of the calcium regulatory muscle protein troponin-C at 2.8 Å resolution. *Nature* **313**, 653–659
7. Vibert, P., Craig, R., and Lehman, W. (1997) Steric-model for activation of muscle thin filaments. *J. Mol. Biol.* **266**, 8–14
8. Mak, A. S., and Smillie, L. B. (1981) Non-polymerizable tropomyosin: preparation, some properties and F-actin binding. *Biochem. Biophys. Res. Commun.* **101**, 208–214
9. Potter, J. D., Sheng, Z., Pan, B.-S., and Zhao, J. (1995) A direct regulatory role for troponin T and a dual role for troponin C in the Ca²⁺ regulation of muscle contraction. *J. Biol. Chem.* **270**, 2557–2562
10. Pringle, J. W. S. (1981) The Bidder lecture, 1980: the evolution of fibrillar muscle in insects. *J. Exp. Biol.* **94**, 1–14
11. Syme, D. A., and Josephson, R. K. (1995) Influence of muscle length on work from trabecular muscle of frog atrium and ventricle. *J. Exp. Biol.* **198**, 2221–2227
12. Steiger, G. (1977) Insect flight muscle. *Ed Tregear, R. Oxford: North-Holland*
13. Pringle, J. W. S. (1978) Stretch-activation of muscle: function and mechanism. *Proc. R. Soc. B.* **201**, 107–130
14. Agianian, B., Krzic, U., Qiu, F., Linke, W. A., Leonard, K., and Bullard, B. (2004) A troponin switch that regulates muscle contraction by stretch instead of calcium. *EMBO J.* **23**, 772–779
15. Linari, M., Reedy, M. K., Reedy, M. C., Lombardi, V., and Piazzesi, G. (2004) Ca-activation and stretch-activation in insect flight muscle. *Biophys. J.* **87**, 1101–1111
16. Gordon, S., and Dickinson, M. H. (2006) Role of calcium in the regulation of mechanical power in insect flight. *Proc. Natl. Acad. Sci. U.S.A.* **103**, 4311–4315
17. Perz-Edwards, R. J., Irving, T. C., Baumann, B. A., Gore, D., Hutchinson, D. C., Kržič, U., Porter, R. L., Ward, A. B., and Reedy, M. K. (2011) X-ray diffraction evidence for myosin-troponin connections and tropomyosin movement during stretch activation of insect flight muscle. *Proc. Natl. Acad. Sci. U.S.A.* **108**, 120–125
18. Wu, S., Liu, J., Reedy, M. C., Tregear, R. T., Winkler, H., Franzini-Armstrong, C., Sasaki, H., Lucaveche, C., Goldman, Y. E., Reedy, M. K., and Taylor, K. A. (2010) Electron tomography of cryofixed, isometrically contracting insect flight muscle reveals novel actin-myosin interactions. *PLoS ONE* **5**, e12643
19. De Nicola, G., Burkart, C., Qiu, F., Agianian, B., Labeit, S., Martin, S., Bullard, B., and Pastore, A. (2007) The structure of *Lethocerus* troponin C: insights into the mechanism of stretch activation in muscles. *Structure* **15**, 813–824
20. Krzic, U., Rybin, V., Leonard, K. R., Linke, W. A., and Bullard, B. (2010) Regulation of oscillatory contraction in insect flight muscle by troponin. *J. Mol. Biol.* **397**, 110–118
21. De Nicola, G. F., Martin, S., Bullard, B., and Pastore, A. (2010) Solution structure of the apo C-terminal domain of the *Lethocerus* F1 troponin C isoform. *Biochemistry* **49**, 1719–1726
22. Boyd, J., Hommel, U., and Campbell, I. D. (1990) Influence of cross-correlation between dipolar and anisotropic chemical shift relaxation mechanisms upon longitudinal relaxation rates of ¹⁵N in macromolecules. *Chem. Phys. Lett.* **175**, 477–482
23. Cornilescu, G., Delaglio, F., and Bax, A. (1999) Protein backbone angle restraints from searching a database for chemical shift and sequence homology. *J. Biomol. NMR* **13**, 289–302

Structural Comparison of the Two Troponin C Isoforms of *Lethocerus*

24. Biekofsky, R. R., Martin, S. R., Browne, J. P., Bayley, P. M., and Feeney, J. (1998) Ca²⁺ coordination to backbone carbonyl oxygen atoms in calmodulin and other EF-hand proteins: 15N chemical shifts as probes for monitoring individual-site Ca²⁺ coordination. *Biochemistry* **37**, 7617–7629
25. Martin, S. R., Avella, G., Adrover, M., de Nicola, G. F., Bullard, B., and Pastore, A. (2011) Binding properties of the calcium-activated F2 isoform of *Lethocerus* troponin C. *Biochemistry* **50**, 1839–1847
26. Linse, S., Bylsma, N. R., Drakenberg, T., Sellers, P., Forsén, S., Thulin, E., Svensson, L. A., Zajtzeva, I., Zajtsev, V., and Marek, J. (1994) A calbindin D9k mutant with reduced calcium affinity and enhanced cooperativity: metal ion binding, stability, and structural studies. *Biochemistry* **33**, 12478–12486
27. Takeda, S., Yamashita, A., Maeda, K., and Maéda, Y. (2003) Structure of the core domain of human cardiac troponin in the Ca²⁺-saturated form. *Nature* **424**, 35–41
28. Vinogradova, M. V., Stone, D. B., Malanina, G. G., Karatzaferi, C., Cooke, R., Mendelson, R. A., and Fletterick, R. J. (2005) Ca²⁺-regulated structural changes in troponin. *Proc. Natl. Acad. Sci. U.S.A.* **102**, 5038–5043
29. Tress, M. L., Jones, D., and Valencia, A. (2003) Predicting reliable regions in protein alignments from sequence profiles. *J. Mol. Biol.* **330**, 705–718
30. Wray, J. S. (1979) Filament geometry and the activation of insect flight muscles. *Nature* **280**, 325–326
31. Fukuda, N., Wu, Y., Nair, P., and Granzier, H. L. (2005) Phosphorylation of titin modulates passive stiffness of cardiac muscle in a titin isoform-dependent manner. *J. Gen. Physiol.* **125**, 257–271
32. Granzier, H. L., and Wang, K. (1993) Passive tension and stiffness of vertebrate skeletal and insect flight muscles: the contribution of weak cross-bridges and elastic filaments. *Biophys. J.* **65**, 2141–2159
33. Thorson, J., and White, D. C. (1983) Role of cross-bridge distortion in the small-signal mechanical dynamics of insect and rabbit striated muscle. *J. Physiol.* **343**, 59–84
34. Dickinson, M. H., Hyatt, C. J., Lehmann, F. O., Moore, J. R., Reedy, M. C., Simcox, A., Tohtong, R., Vigoreaux, J. O., Yamashita, H., and Maughan, D. W. (1997) Phosphorylation-dependent power output of transgenic flies: an integrated study. *Biophys. J.* **73**, 3122–3134
35. Tohtong, R., Yamashita, H., Graham, M., Haeberle, J., Simcox, A., and Maughan, D. (1995) Impairment of muscle function caused by mutations of phosphorylation sites in myosin regulatory light chain. *Nature* **374**, 650–653
36. Bullard, B., and Pastore, A. (2011) Regulating the contraction of insect flight muscle. *J. Muscle Res. Cell Motil.* **32**, 303–313
37. Iwamoto, H., Inoue, K., and Yagi, N. (2010) Fast X-ray recordings reveal dynamic action of contractile and regulatory proteins in stretch-activated insect flight muscle. *Biophys. J.* **99**, 184–192
38. Wang, Q., Zhao, C., and Swank, D. M. (D.M.) Calcium and stretch-activation modulate power generation in *Drosophila* flight muscle. *Biophys. J.* **101**, 2207–2213
39. Sun, Y.-B., Brandmeier, B., and Irving, M. (2006) Structural changes in troponin in response to Ca²⁺ and myosin binding to thin filaments during activation of skeletal muscle. *Proc. Natl. Acad. Sci. U.S.A.* **103**, 17771–17776
40. Sun, Y.-B., Lou, F., and Irving, M. (2009) Calcium- and myosin-dependent changes in troponin structure during activation of heart muscle. *J. Physiol.* **587**, 155–163
41. Ikura, M., Kay, L. E., and Bax, A. (1990) A novel approach for sequential assignment of 1H, 13C, and 15N spectra of proteins: heteronuclear triple-resonance three-dimensional NMR spectroscopy: application to calmodulin. *Biochemistry* **29**, 4659–4667
42. Liu, M., Mao, X.-a., Ye, C., Huang, H., Nicholson, J. K., and Lindon, J. C. (1998) Improved WATERGATE pulse sequences for solvent suppression in NMR spectroscopy. *J. Magn. Reson.* **132**, 125–129
43. Delaglio, F., Grzesiek, S., Vuister, G. W., Zhu, G., Pfeifer, J., and Bax, A. (1995) NMRPipe: a multidimensional spectral processing system based on UNIX pipes. *J. Biomol. NMR* **6**, 277–293
44. Kay, L. E., Torchia, D. A., and Bax, A. (1989) Backbone dynamics of proteins as studied by 15N inverse detected heteronuclear NMR spectroscopy: application to staphylococcal nuclease. *Biochemistry* **28**, 8972–8979
45. Lipari, G., and Szabo, A. (1982) Model-free approach to the interpretation of nuclear magnetic resonance relaxation in macromolecules: 1: theory and range of validity. *J. Am. Chem. Soc.* **104**, 4546–4559
46. Dosset, P., Hus, J. C., Blackledge, M., and Marion, D. (2000) Efficient analysis of macromolecular rotational diffusion from heteronuclear relaxation data. *J. Biomol. NMR* **16**, 23–28
47. Martí-Renom, M. A., Stuart, A. C., Fiser, A., Sánchez, R., Melo, F., and Sali, A. (2000) Comparative protein structure modeling of genes and genomes. *Annu. Rev. Biophys. Biomol. Struct.* **29**, 291–325
48. Lindorff-Larsen, K., Piana, S., Palmo, K., Maragakis, P., Klepeis, J. L., Dror, R. O., and Shaw, D. E. (2010) Improved side-chain torsion potentials for the Amber ff99SB protein force field. *Proteins* **78**, 1950–1958
49. Mahoney, M. W., and Jorgensen, W. L. (2000) A five-site model for liquid water and the reproduction of the density anomaly by rigid, nonpolarizable potential functions. *J. Chem. Phys.* **112**, 8910–8922
50. Jorgensen, W. L., Chandrasekhar, J., Madura, J. D., Impey, R. W., and Klein, M. L. (1983) Comparison of simple potential functions for simulating liquid water. *J. Chem. Phys.* **79**, 926–935
51. Hess, B., Bekker, H., Berendsen, H. J. C., and Fraaije, J. G. E. M. (1997) LINCS: A linear constraint solver for molecular simulations. *J. Comput. Chem.* **18**, 1463–1472
52. Darden, T., York, D., and Pedersen, L. (1993) Particle mesh Ewald: An N²log(N) method for Ewald sums in large systems. *J. Chem. Phys.* **98**, 10089–10092
53. Bussi, G., Donadio, D., and Parrinello, M. (2007) Canonical sampling through velocity rescaling. *J. Chem. Phys.* **126**, 014101
54. Berendsen, H. J. C., Postma, J. P. M., van Gunsteren, W. F., DiNola, A., and Haak, J. R. (1984) Molecular dynamics with coupling to an external bath. *J. Chem. Phys.* **81**, 3684–3690

**Toward Understanding the Molecular Bases of Stretch Activation: A
STRUCTURAL COMPARISON OF THE TWO TROPONIN C ISOFORMS OF
LETHOCERUS**

Domenico Sanfelice, Máximo Sanz-Hernández, Alfonso de Simone, Belinda Bullard
and Annalisa Pastore

J. Biol. Chem. 2016, 291:16090-16099.

doi: 10.1074/jbc.M116.726646 originally published online May 20, 2016

Access the most updated version of this article at doi: [10.1074/jbc.M116.726646](https://doi.org/10.1074/jbc.M116.726646)

Alerts:

- [When this article is cited](#)
- [When a correction for this article is posted](#)

[Click here](#) to choose from all of JBC's e-mail alerts

This article cites 51 references, 12 of which can be accessed free at
<http://www.jbc.org/content/291/31/16090.full.html#ref-list-1>