

# Mitochondrial uncoupling proteins regulate angiotensin-converting enzyme expression: crosstalk between cellular and endocrine metabolic regulators suggested by RNA interference and genetic studies

Sukhbir S. Dhamrait<sup>1)2)\*</sup>, Cecilia Maubaret<sup>3)</sup>, Ulrik Pedersen-Bjergaard<sup>4)5)</sup>, David J. Brull<sup>1)6)</sup>, Peter Gohlke<sup>7)</sup>, John R. Payne<sup>1)8)</sup>, Michael World<sup>9)</sup>, Birger Thorsteinsson<sup>4)5)</sup>, Steve E. Humphries<sup>1)</sup> and Hugh E. Montgomery<sup>10)11)</sup>

Uncoupling proteins (UCPs) regulate mitochondrial function, and thus cellular metabolism. Angiotensin-converting enzyme (ACE) is the central component of endocrine and local tissue renin–angiotensin systems (RAS), which also regulate diverse aspects of whole-body metabolism and mitochondrial function (partly through altering mitochondrial UCP expression). We show that ACE expression also appears to be regulated by mitochondrial UCPs. In genetic analysis of two unrelated populations (*healthy young UK men* and *Scandinavian diabetic patients*) serum ACE (sACE) activity was significantly higher amongst *UCP3-55C* (rather than T) and *UCP2 I* (rather than D) allele carriers. RNA interference against UCP2 in human umbilical vein endothelial cells reduced UCP2 mRNA sixfold ( $P < 0.01$ ) whilst increasing

ACE expression within a physiological range ( $< 1.8$ -fold at 48 h;  $P < 0.01$ ). Our findings suggest novel hypotheses. Firstly, cellular feedback regulation may occur between UCPs and ACE. Secondly, *cellular* UCP regulation of *sACE* suggests a novel means of crosstalk between (and mutual regulation of) cellular and endocrine metabolism. This might partly explain the reduced risk of developing diabetes and metabolic syndrome with RAS antagonists and offer insight into the origins of cardiovascular disease in which UCPs and ACE both play a role.

## Keywords:

■ ACE; association studies; endothelial cell; gene expression; genetics; uncoupling protein.

DOI: 10.1002/icl3.1019

<sup>1)</sup> Centre for Cardiovascular Genetics, BHF Laboratories, University College London, London, UK

<sup>2)</sup> Department of Cardiology, Western Sussex Hospitals NHS Trust, West Sussex, UK

<sup>3)</sup> Centre INSERM U897-Epidemiologie-Biostatistique, Bordeaux, France

<sup>4)</sup> Department of Cardiology, Nephrology and Endocrinology, Hillerød Hospital, Hillerød, Denmark

<sup>5)</sup> Faculty of Health Sciences, University of Copenhagen, Copenhagen, Denmark

<sup>6)</sup> Department of Cardiology, The Whittington Hospital NHS Trust, London, UK

<sup>7)</sup> Institute of Experimental and Clinical Pharmacology, University Hospital of Schleswig-Holstein, Kiel, Germany

<sup>8)</sup> Scottish National Advanced Heart Failure Service, Golden Jubilee National Hospital, Clydebank, UK

<sup>9)</sup> Royal Centre for Defence Medicine, Queen Elizabeth Hospital, Birmingham, UK

<sup>10)</sup> UCL and National Centre for Sport, Exercise & Health, University College London, London, UK

<sup>11)</sup> UCL Institute for Human Health and Performance, University College London, London, UK

## \*Corresponding author:

Sukhbir Dhamrait

E-mail: Sukhbir.Dhamrait@nhs.net

received 3 February 2015; accepted 11 February 2015

## Abbreviations

**ACE**, Angiotensin-converting enzyme; **ACEI**, Angiotensin-converting enzyme inhibitor; **ADP**, Adenosine diphosphate; **Ang I**, Angiotensin I; **Ang II**, Angiotensin II; **ANCOVA**, Analysis of covariance; **ANOVA**, Analysis of variance; **ARB**, Angiotensin II type 1 receptor blocker; **AT<sub>1</sub>R**, Angiotensin II type 1 receptor; **AT<sub>2</sub>R**, Angiotensin II type 2 receptor; **ATP**, Adenosine triphosphate; **BAT**, Brown adipose tissue; **cdDNA**, Complementary deoxyribonucleic acid; **Ct**, Crossing threshold; **D**, Deletion; **DNA**, Deoxyribonucleic acid; **H<sup>+</sup>**, Hydrogen ion/proton; **HMAR**, Healthy Male Army Recruits Study; **HUVECS**, Human umbilical vein endothelial cells; **GAPDH**, Glyceraldehyde 3-phosphate dehydrogenase; **I**, Insertion; **LD**, Linkage disequilibrium; **mRNA**, Messenger ribonucleic acid; **O<sub>2</sub>**, Molecular/diatomic oxygen; **PCR**, Polymerase chain reaction; **RAS**, Renin–angiotensin system; **RNA**, Ribonucleic acid; **ROS**, Reactive oxygen species; **RT-PCR**, Reverse transcription polymerase chain reaction; **sACE**, Serum angiotensin-converting enzyme; **SD**, Standard deviation; **siRNA**, Small interfering ribonucleic acid molecule, **SNP**, Single nucleotide polymorphism, **T1DM**, Type 1 Diabetes Mellitus Study; **UCP**, Uncoupling protein

## Introduction

### Both circulating and local (tissue/cellular) renin–angiotensin systems exist

As a pivotal component of the endocrine renin–angiotensin systems (RAS), angiotensin-converting enzyme (ACE) plays an important role in the regulation of the human circulation. Cleaved from an anchoring stalk on endothelial cells that line blood vessels, it is released into the circulation, acting upon the protein angiotensin I to yield eight amino-acid angiotensin II (Ang II). Ang II provokes release of the hormone aldosterone from the adrenal glands, which leads to salt and water retention by the kidney. It also causes constriction of small blood vessels in the arterial tree – actions which, together, serve to elevate blood pressure. In medical care, RAS antagonists, whether ACE inhibitors (ACEIs) or drugs antagonising the actions of Ang II at its type 1 receptor (AT<sub>1</sub>R blockers or ARBs), are widely used in the treatment of elevated blood pressure, or in the treatment of heart failure in which reduced vascular tone and reduced circulating volume may offer advantages.

But the RAS has functions far beyond this, being found in cells and tissues throughout the body. Here, Ang II action on cell surface AT<sub>1</sub>R and type 2 (AT<sub>2</sub>R) receptors affects the function of the cell that synthesised it (autocrine actions), or the function of nearby cells (paracrine actions). Ang II can also act as an intracellular signalling molecule (so-called intracrine action): some cells internalise Ang II made elsewhere, and others synthesise it *de novo* (reviewed in [1]). In this way, both circulating and tissue RAS can act independently or interact in the regulation of cell function.

### ACE activity is influenced by naturally occurring variation in the ACE gene

Circulating and tissue ACE activity varies greatly between individuals, and common genetic variation in the ACE gene explains up to 40% of such differences. In particular, each of the two inherited ACE genes can exist in one of two forms. One form contains a small extra sequence of DNA (287 base pairs) and is known as the ‘insertion’ or ‘I’ variant (allele). If this fragment is missing, the gene variant is known as the deletion, or ‘D’, allele. In both the circulating/endocrine [2] and cellular [3] RAS, the ‘I’ allele is associated with lower ACE activity.

### RAS play an important role in regulating metabolism in health and disease

One important function of local and endocrine RAS is in the regulation of cellular and whole-body metabolism. This they do in numerous ways, influencing, for example, the storage and release of fatty acid fuels from fat cells (adipocytes) [4]; regulating islet cells in the pancreas, which are responsible for releasing the hormone insulin and thus regulating uptake and use of glucose [5]; and regulating the uptake and use of carbohydrate fuel by the liver [6]. But Ang II influences more than the uptake of metabolic substrates. It increases liver, skeletal muscle and whole-body oxygen consumption in rodents [7–9]. Conversely, ARBs and ACEI reduce oxygen

consumption related to renal sodium transport [10]. Human data are supportive of such metabolic roles: the ACE I allele is associated not only with lower circulating and tissue ACE activity but also with successful physical performance in hypoxic environments [11–14] and with enhanced training-related falls in skeletal muscle oxygen consumption per unit of external work [15,16].

These metabolic roles of RAS appear to influence the development of disease in humans. Genetically determined high ACE activity (marked by the ACE D rather than I allele) is associated with the development of metabolic syndrome (hypertension, diabetes and abnormal blood lipid profile) [17], whilst reducing RAS activity (by the use ACEIs or ARBs) also reduces the risk of people developing diabetes [18], or of them suffering a myocardial infarction (heart attack), clinical signs or symptoms of heart failure, stroke or death from a cardiovascular cause [19].

### Ang II has direct effects on mitochondria

The *cellular* metabolic effects of RAS may be mediated, in part, by direct action of Ang II on the mitochondrial respiratory chain (reviewed in [20]). Mitochondria are the intracellular organelles responsible for generating the body’s energy currency, adenosine triphosphate (ATP). The respiratory or electron transport chain of the inner mitochondrial membrane consists of an assembly of several discrete electron carriers, which are grouped into complexes. Three of these complexes (complexes I, III and IV) work as oxidation–reduction-driven proton pumps: electrons derived from diverse metabolic substrates combine with molecular oxygen to form water, and the energy released drives the translocation of protons (hydrogen ions, H<sup>+</sup>) from the mitochondrial matrix, across the otherwise impermeable inner membrane, and into the intermembrane space. This results in a chemiosmotic gradient (a mitochondrial membrane potential) across the inner membrane, which drives the flow of these protons back into the matrix through ATP synthase, which produces ATP from adenosine diphosphate (ADP) and inorganic phosphate. When the membrane potential is high (for instance at rest when no useful work is being performed and the demand for ATP is low), complexes I and III are also able to produce reactive oxygen species (ROS), where diatomic oxygen (O<sub>2</sub>) combines with a single electron only to form superoxide rather than being fully reduced to water. These ROS can cause substantial cell damage [21]. Exogenously administered Ang II traffics to mitochondria [22,23], where outer mitochondrial membranes may express AT<sub>1</sub>Rs [24]. Ang II will then stimulate production of ROS, NADPH oxidase-dependent superoxide and ADP-independent respiration – which reduces the activities of complexes I and III. Mitochondria may have the capacity to endogenously synthesise Ang II [25–29].

### Uncoupling proteins can ‘short circuit’ the mitochondrial membrane and reduce the membrane potential

The ‘coupling’, which connects substrate energy with the derived ATP is, however, incomplete – protons can flow back into the matrix in a manner disconnected from ATP synthesis. This is in part controlled by nuclear-encoded, mitochondrial-

targeted uncoupling proteins (UCPs), of which five mammalian forms are recognised [30]. Of these, UCP4 and UCP5 are principally neuronally expressed [31]. The remaining three (UCP1–3) have close sequence homology. Expression of UCP2 is recognised in tissues including white adipose tissue, liver, and cardiac and skeletal muscle, whilst that of UCP1 is limited to brown adipose tissue (BAT), and of UCP3 largely to BAT and skeletal and, to a lesser extent, cardiac muscle [32]. By allowing protons to flow back across the inner mitochondrial membrane without coupled ATP synthesis, UCPs reduce the membrane potential and help protect the cell from the generation of excessive ROS from complexes I and III [33,34]. Thus, expression of UCP2 is increased as ROS levels rise, in a negative feedback regulatory system [35]. Indeed, it has been hypothesised that UCPs evolved in response to severe ROS formation resulting from the beta-oxidation of fat [36].

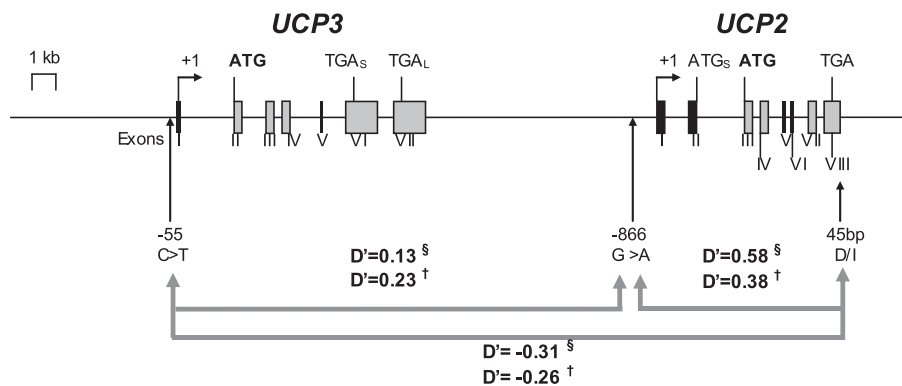
### UCPs alter metabolism through mechanisms in addition to altering mitochondrial membrane potential

This said, UCP2 may have metabolic roles other than, or beyond those related to, proton gradient and ROS generation (well reviewed in detail in [37]). Indeed, it appears to increase fatty acid oxidation [38], whilst long-chain fatty acid intake is also known to induce UCP2 expression [39]. Further, UCP2 appears to play roles in the regulation of food intake [14,15] and insulin secretion [16,17], although the mechanisms by which such actions occur remain poorly understood [40]. One means by which to explore the physiological roles of UCPs is through the study of genetic variants that are associated with differences in their expression. Helpfully, even a

common genetic variation in the *UCP3/2* locus influences UCP expression.

### Functional variation exists in the genes that encode the UCPs

A common variant exists in the *UCP2* gene's promoter region (the area that initiates gene transcription), comprising the presence of an adenine base (rather than the more frequent guanine: *UCP2*-866G>A, rs659366). This variant lies in a region containing binding sites for transcription factors (factors that stimulate gene transcription) influenced by hypoxia and inflammation. Linkage disequilibrium (LD) refers to the finding that some gene variants are not randomly distributed in a population: being in proximity, they tend to 'travel together'. This is the case for this UCP2 variant (Fig. 1), which is in complete LD with a second promoter variant (–2723T>A). These also explain 71% of the variation in messenger RNA (mRNA) transcript ratio associated with the deletion/insertion (D/I) of 45 base pairs of DNA (in exon 8 of the gene) [41]. The *UCP2*-866A allele is associated with lower gene transcription (repression) in somatic non- $\beta$  cells [42] but more effective *UCP2* gene transcription in pancreatic  $\beta$  cells (those that make insulin). In humans, the *UCP2*-866A allele is thus associated with reduced insulin sensitivity [42] and glucose-stimulated insulin secretion [43], diabetes in obese subjects [42], oxidative stress in diabetic people [44] and future cardiovascular risk in diabetic and non-diabetic people [44]. The *UCP2* I allele is associated with reduced *UCP2* mRNA stability [41], and with elevated body mass index [45] and variably with basal metabolic rate [46].



**Figure 1.** Diagrammatic representation of the human *UCP3* and *UCP2* gene locus (chromosome 11q13) with the relative positions and linkage disequilibria (LD) of the three common genetic variants in this study: the *UCP3*-55C>T promoter variant, *UCP2*-866G>A promoter variant and the *UCP2* D/I variant. *UCP2* is approximately 7 kb downstream from *UCP3*. They share 72% sequence homology. The exonic structures are shown (rectangles) as well as the transcription start points (angled arrows), translation start codons (ATG) and translation stop codons (TGA). *UCP3* has two translation stop codons, yielding either a short (TGA<sub>S</sub>) or long (TGA<sub>L</sub>) transcript. The short transcript does not code for a functioning protein. There are three ATG codons at positions 888, 924 and 948 within an open reading frame in exon 2 of *UCP2*, which could initiate translation of a putative short protein (depicted as ATG<sub>S</sub>). However, translation only starts at the ATG codon in exon 3 to yield *UCP2* protein [47]. LD (or *D'*) is the non-random association of alleles or genetic markers in a population and is measured between 0 and 1. When two alleles are completely randomly associated, *D'* is zero. When two alleles are completely linked or associated, then *D'* = 1. In the figure, *D'* is shown between the three gene variants for the HMAR (§) and T1DM (†) studies. In both studies, there was significant LD between the *UCP2*-866G>A and *UCP2* D/I variants (*D'* 0.38 – 0.54; *P* < 0.0001) and negative LD (–0.31 to –0.26; *P* = 0.0005) between the *UCP3*-55C>T and *UCP2* D/I variants, but no LD between the *UCP3*-55C>T and *UCP2*-866G>A variants. The common *UCP3*-55C allele therefore showed significant allelic association with the rare *UCP2* I allele, and the latter with the rare *UCP2*-866A allele.

Meanwhile, a common variant in the regulatory 'promoter' region of the *UCP3* gene (the presence of a thymidine base rather than the more frequent cytosine:  $-55C>T$ , rs1800849) is in negative LD with the *UCP2* D/I polymorphism [48], the T allele being associated with obesity in a recessive manner [48] and with higher circulating low-density lipoproteins cholesterol levels [49]. For clarity, such LD is demonstrated in Fig. 1, which relates to our study populations described later. We have recently shown the combined presence of both the *UCP3-55C* allele and the *UCP2-866A* allele (the '*UCP3-55C/UCP2-866A* haplotype') to be associated with gains in muscle performance following endurance training [50] in a similar pattern to that previously associated with the *ACE* I allele (lower ACE activity) [51].

### ACE may regulate UCP expression. But do UCPs regulate ACE expression?

Some of the metabolic effects associated with ACE and Ang II (refer to the previous discussion) are now thought to be mediated through regulation of UCP expression: Ang II upregulates expression of *UCP1* [52], *UCP2* [53] and *UCP3* [54]. However, an unexpected (and completely novel) finding made by our group suggested an inverse relationship: that UCP activity might also regulate ACE expression. We had previously reported a correlation between lower serum ACE (sACE) activity and decreased risk of hypoglycaemia in Danish diabetic adult, going on to show a similar association of the *ACE* I allele (i.e. genetically determined low sACE) with a lower risk of severe hypoglycaemia [55]. Low ACE activity is favourable for performance and hypoglycaemia awareness when substrate availability is limited, for example, during hypoglycaemia. As part of our ongoing work, we recently genotyped these subjects for the *UCP3-55C>T* polymorphism, finding an association between *UCP3* genotype and sACE activity. Such data suggest a role for UCPs in the regulation of ACE activity, rather than the (previously recognised) converse observation.

We sought to confirm the validity of the finding by performing more detailed genetic analysis in this sample of 210 type 1 diabetic study patients ( $\geq 18$  years old; 117 women; mean age  $45.5 \pm 13.7$  years; none taking RAS antagonists): the T1DM study. We then sought replication of our findings in a second completely independent dataset, comprising 250 Caucasian British healthy male army recruits (mean age  $19.4 \pm 2.2$  years): the HMAR study.

Finally, as sACE is derived from endothelial cells, we performed *in vitro* experimentation to confirm the co-expression of both *ACE* and *UCP2* mRNA in human umbilical vein endothelial cells (HUVECs) before determining whether changes in *UCP* expression (by RNA interference) could directly alter endothelial *ACE* expression.

## Results

### Gene variants in the adjacent UCP2 and UCP3 loci are tightly associated

Genotype distributions (Table 1) were in Hardy–Weinberg equilibrium (meaning that they are consistent with stability over generations) and similar to those previously reported in Caucasians [41,45,48]. There was significant LD between the *UCP2-866G>A* and *UCP2* D/I variants ( $D = 0.38-0.54$ ;  $P < 0.0001$ ; Fig. 1) and negative LD ( $-0.31$  to  $-0.26$ ;  $P = 0.0005$ ) between the *UCP3-55C>T* and *UCP2* D/I variants, as previously described in a South Indian cohort [48], but no LD between the *UCP3-55C>T* and *UCP2-866G>A* variants. The *UCP3-55C* allele therefore showed allelic association with the rare *UCP2* I allele, and the latter with the *UCP2-866A* allele. There was no association between any genotype and common descriptive population variables.

### sACE activity is strongly associated with UCP2/3 genotype

sACE activity was normally distributed in both studies and weakly correlated with age (HMAR  $r = -0.19$ ;  $P = 0.02$ , T1DM  $r = 0.12$ ;  $P = 0.04$ ) but no other population variables. Age-adjusted sACE was therefore used in subsequent analyses. As expected, sACE activity was higher in T1DM subjects, with levels similar to those of previously published data [56]. The wide distribution of ACE activities in the T1DM group may partly reflect differences in diabetic phenotype, such as the presence or absence of nephropathy [56].

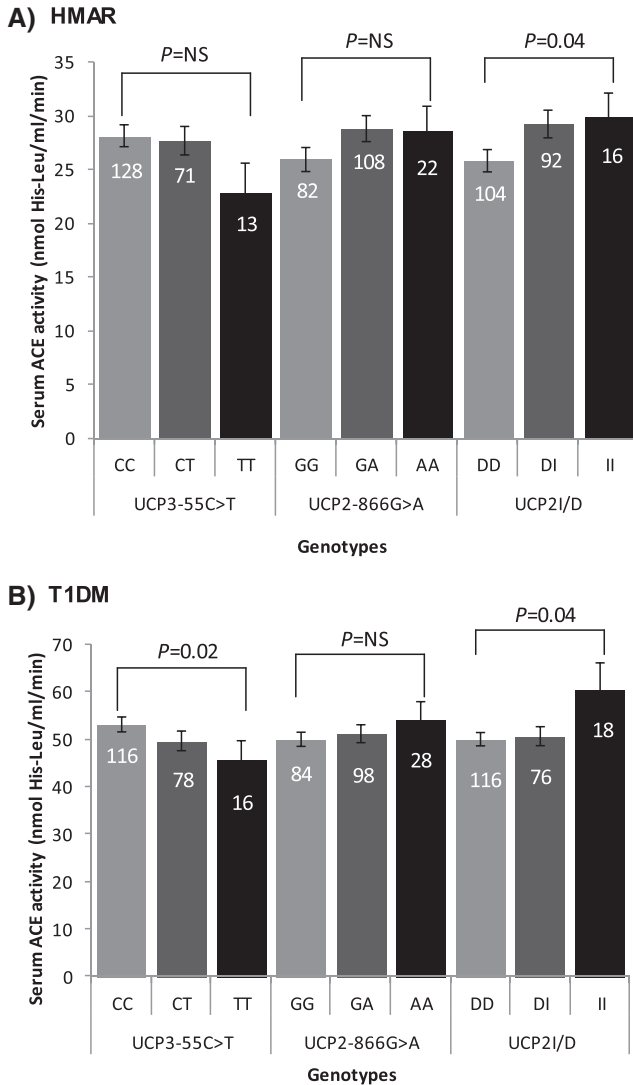
In both studies, sACE activity differed by *UCP* genotype. For *UCP2*, the I allele was associated with significantly higher sACE activity in both the HMAR study ( $25.8 \pm 8.3$  vs.  $29.2 \pm 10.3$  vs.  $29.9 \pm 7.3$  nmol his-leu/ml/min for DD vs. DI vs. II, linear trend  $P = 0.04$ ; I allele vs. DD homozygotes  $P = 0.02$ ) and T1DM study ( $49.9 \pm 15.5$  vs.  $50.5 \pm 17.6$  vs.  $60.4 \pm 24.2$  nmol his-leu/ml/min;  $P = 0.04$  analysis of variance [ANOVA]). Considering *UCP3*, the ACE activity for CC versus

**Table 1.** *UCP3-55C>T*, *UCP2-866G>A* and *UCP2 D/I* genotype distributions and rare allele frequencies (with 95% confidence intervals in parentheses) in the HMAR and T1DM studies

Study	Gene variant		
	<i>UCP3-55C&gt;T</i>	<i>UCP2-866G&gt;A</i>	<i>UCP2 D/I</i>
HMAR	128/71/13 0.229 (0.189–0.269)	82/108/22 0.358 (0.313–0.404)	104/92/16 0.292 (0.249–0.336)
T1DM	116/78/16 0.262 (0.220–0.304)	84/98/28 0.367 (0.321–0.413)	116/76/18 0.267 (0.224–0.309)
<i>P</i> HMAR vs. T1DM	0.53	0.97	0.74

There was no significant difference in genotype distribution between the two studies.





**Figure 2.** Mean age-adjusted serum ACE (sACE) activity by *UCP3-55C>T*, *UCP2-866G>A* and *UCP2 D/II* genotypes in **A**: healthy male army recruits (HMAR) study and **B**: type 1 diabetic people (T1DM) study. Data are mean  $\pm$  SD. The number of individuals in each genotype group is given at the top of each bar. The *P* value for the statistical comparison of mean age-adjusted sACE activity between genotypes is shown above each gene variant. There were significant differences in sACE activity by *UCP2D/II* genotype in both studies and by *UCP3-55C>T* genotypes in the T1DM study. NS = non-significant.

*CT* versus *TT* genotypes was  $53.0 \pm 17.0$  versus  $49.5 \pm 18.3$  versus  $45.5 \pm 16.6$  nmol his-leu/ml/min ( $P=0.02$  ANOVA) in the T1DM cohort. In the HMAR group, ACE activity was  $28.1 \pm 9.6$  versus  $27.7 \pm 8.4$  versus  $22.8 \pm 8.7$  nmol his-leu/ml/min ( $P=0.07$  ANOVA), with sACE activity lower amongst *UCP3TT* homozygotes in both cohorts (by, on average, 6–8 nmol his-leu/ml/min; Fig. 2), a finding confirmed on repeated measures analysis in the HMAR study ( $P=0.03$ ). In multivariate analysis, the *statistical interaction* between the three *UCP* genotypes accounted for up to 4.1% and 5% of the inter-individual variation in sACE activity in the HMAR and T1DM studies, respectively, but with the majority

of this variation accounted for by the statistical interaction between *UCP2-866G>A* and *UCP2D/I* genotypes ( $P=0.001$ ).

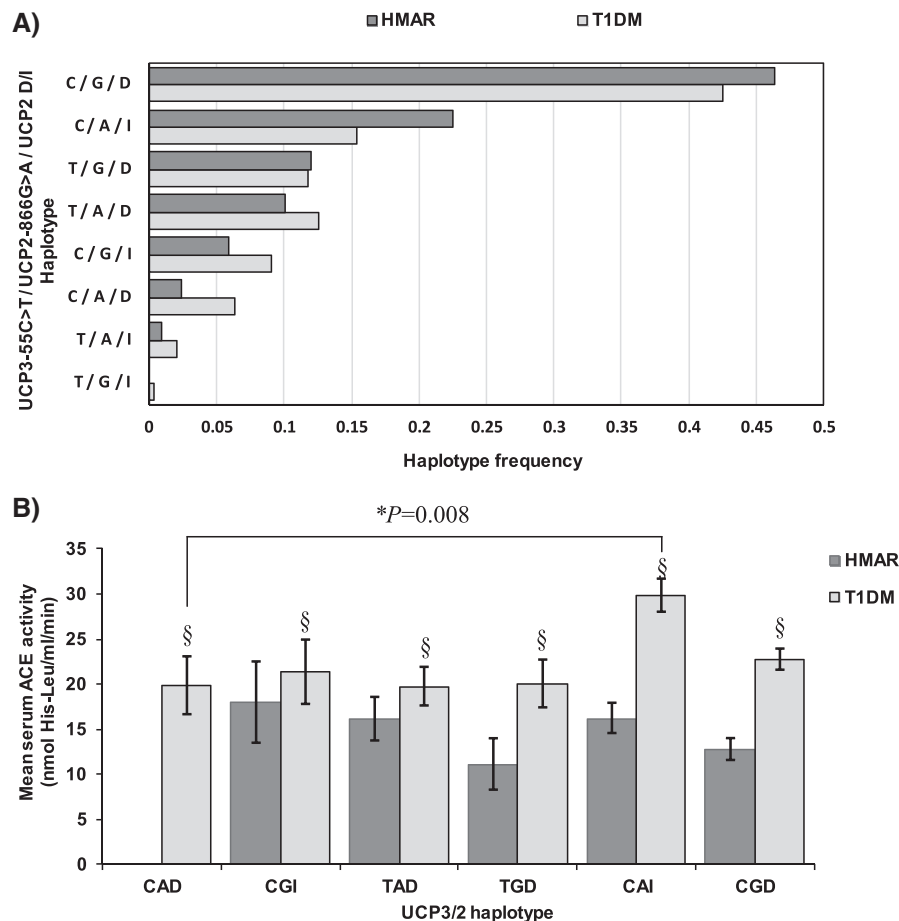
The expected sACE activity phenotypic means according to estimated haplotypes (groupings of the different gene variants, found in combination) for study subjects in the HMAR and T1DM studies are depicted in Fig. 3. Uncommon haplotype groups with a frequency  $<0.05$  in both studies were excluded from subsequent analysis (i.e. the *UCP3-55T/UCP2-866A/UCP2I* and the *UCP3-55T/UCP2-866G/UCP2I* haplotypes). There was insufficient statistical power to detect a haplotypic effect in predicting sACE activity in the HMAR study ( $P=0.24$ ), perhaps contributed to by the limited number in such haplotype groups and compounded by the different distribution on ACE activity observed in this group when compared with T1DM subjects (see section on Discussion). However, there was a significant haplotype effect in predicting sACE activity in the T1DM subjects ( $P=0.01$ ). The lowest sACE activity was seen amongst individuals with the *UCP3/2* haplotype *CAD* in both studies. A single nucleotide polymorphism (SNP) change from the *UCP3/2* *CAD* to *CAI* haplotype led to a significant mean increase in sACE activity of  $10.0$  nmol his-leu/ml/min in the T1DM study ( $P=0.008$ ). The *UCP2 I* allele has been associated with decreased mRNA stability, with expression dependent on variation in the *UCP2G>A* polymorphism [41]. Thus, genotypes associated with putative lower *UCP2* expression were associated with *higher* sACE activity.

### The association of *UCP2/3* genotype with sACE activity might in part be mediated through *UCP*'s regulation of ACE expression

In theory, differences in *UCP* expression may drive systemic (whole body) physiological effects (such as changes in insulin secretion, or in inflammatory or immune responses), which might change sACE activity in ways yet unknown. Alternatively, changes in cellular *UCP* expression might more directly influence ACE expression in those same cells. We sought to clarify the latter hypothesis through *in vitro* experimentation. Specifically, we sought to determine whether cellular *ACE* gene expression (*ACE* mRNA levels) would alter when *UCP* expression (*UCP* mRNA activity) was reduced by introducing targeted 'small interfering RNA' molecules (siRNA). We performed this experiment in HUVECs, given that circulating ACE is derived from such vascular endothelial cells.

Firstly, the mRNA co-expression of *ACE*, *UCP2*, *UCP3* and *GAPDH* (a housekeeping gene) in HUVECs was confirmed using a two-step reverse transcription polymerase chain reaction amplification (RT-PCR). Both *UCP2* and *ACE* mRNA were found to be expressed abundantly in cultured HUVECs, whilst expression of *UCP3* was confirmed at a lower level (Fig. 4).

Subsequent quantitative PCR confirmed that *UCP2* mRNA expression was reduced at all time points (between threefold and sixfold,  $P<0.0001$ , Fig. 5) in endothelial cells transfected with two different siRNAs against *UCP2* (siRNA1 and siRNA2), when compared with scrambled siRNA (a negative control, not specifically targeted at *UCP2*). In keeping with data from our genetic study, this effect was associated with a significant *increase* in *ACE* expression, *ACE* mRNA rising at 30 and 48 h (1.2- to 1.4-fold and approximately 1.8-fold, respectively,  $P<0.001$ ).



**Figure 3. A:** The *UCP3-55C>T*, *UCP2-866G>A* and *UCP2D/I* haplotype frequencies are shown in descending order of frequency for both the HMAR and T1DM studies. The most common haplotype is the *UCP3-55C/UCP2-866G/UCP2D* (CGD) allele. Subsequent analysis was confined to common haplotypes with a frequency greater than 0.05. **B:** Predicted *UCP3-55C>T*, *UCP2-866G>A* and *UCP2D/I* haplotype effects on age-adjusted serum ACE (sACE) activity in the HMAR and T1DM study subjects. Data are mean  $\pm$  SD for each single allele effect. Haplotypes with a frequency less than 0.05 are not represented in the figure because of the very small group size and resulting wide standard deviation for sACE activity. §There was a significant haplotype effect in predicting sACE activity overall in the T1DM subjects ( $P=0.01$ ), but not in the HMAR study. \*The bracket shows the comparison in the T1DM study between those individuals with the CAD haplotype who had the lowest mean sACE activity and those with the CAI haplotype who had the highest mean sACE activity. A SNP change from the *UCP3/2 CAD* to *CAI* haplotype led to a significant mean increase in sACE activity of 10.0 nmol his-leu/ml/min in the T1DM study ( $P=0.008$ ). Individuals with the CAD haplotype in the HMAR study also had the lowest sACE activity but are not shown owing to the low sample size.

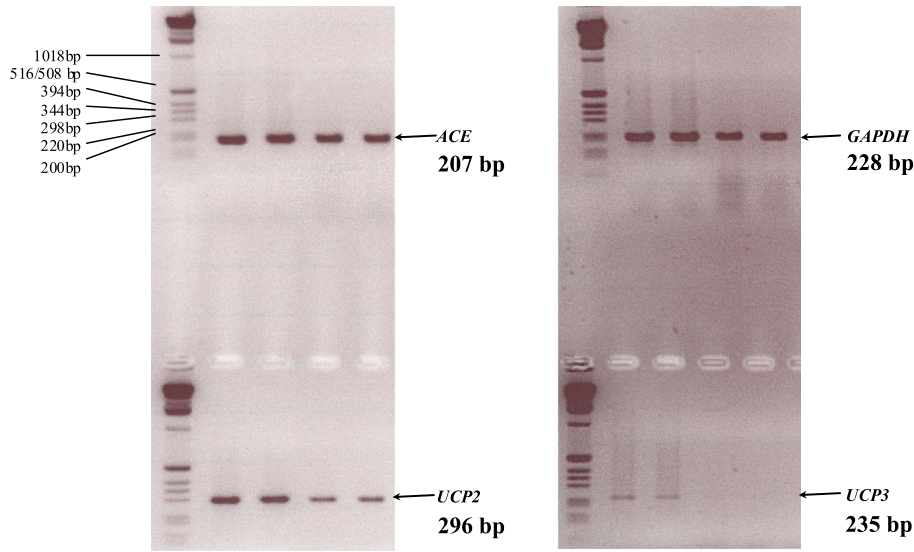
## Discussion

### Genetic variation in the *UCP3/2* locus is associated with sACE activity

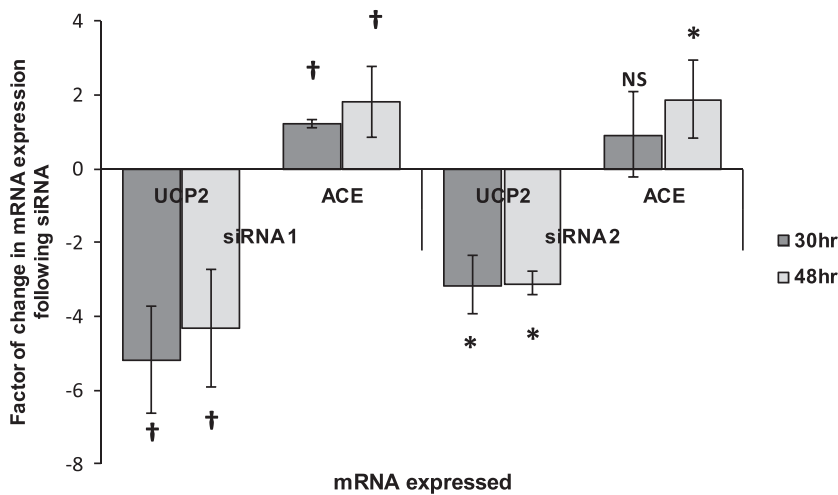
Ours is the first study to demonstrate an association of sACE with a genetic variant outside the *ACE* gene itself [57–59]. We showed that the *UCP3-55C* (rather than T) and *UCP2 I* (rather than D) alleles were associated with higher age-adjusted sACE activity, the interaction between the three genotypes accounting for 4.1% and 5%, respectively, of the inter-individual variation in age-adjusted sACE activity in two independent genotyping studies – one of healthy young UK Caucasian men and one of Scandinavian middle-aged diabetic people. The lowest sACE was associated with *UCP3-55C/UCP2-866A/UCP2D* (*UCP3/2 CAD*) haplotype in both studies, an SNP change from *UCP3/2 CAD* to *CAI* increasing sACE by 10.0 nmol his-leu/ml/

min in the T1DM. We are unable to confidently attribute the observed effects to a precise allele, given that the *UCP3-55C* allele showed allelic association with the rare *UCP2 I* allele, and the latter with the *UCP2-866A* allele. Even the haplotypes described may simply mark functional variation elsewhere in the cluster. The use of exome sequencing in substantially expanded cohorts is thus suggested.

The replication of the association of *UCP* genotype with sACE activity in two independent and diverse groups strengthens confidence in the validity of the findings. It is worthy to note that ACE activity was substantially higher in the T1DM group than in HMAR group – a finding unlikely related to the use of two different methodologies of ACE assay. Indeed, an established literature shows ACE activity (when assayed using the same commercial *Sigma* assay we used) to be elevated in diabetic people to levels commensurate with those we identified and with similar levels in controls to those we report [56].



**Figure 4.** Agarose gel electrophoresis confirmed that *UCP2*, *UCP3* and *ACE* mRNA are co-expressed in endothelial cells. Non-quantitative RT-PCR for *GAPDH*, *UCP2*, *ACE* and *UCP3* was performed on mRNA isolated from four separate cultures of HUVECs grown to confluency, and the products run on a 2% agarose gel against a 1 kb DNA ladder. There is less product in the last two lanes, but this does not affect the result.



**Figure 5.** *UCP2* RNA interference results in a significant increase in *ACE* mRNA. HUVECs were transfected with two different siRNA against *UCP2* (siRNA 1 and siRNA 2) and total RNA isolated at 30 and 48 h. Quantitative RT-PCR was performed on an ABI prism 7900HT. *UCP2* RNA interference resulted in a significant decrease between threefold and sixfold in *UCP2* mRNA expression at 30 and 48 h associated with a significant increase in *ACE* mRNA (1.2- to 1.4-fold at 30 h and 1.8-fold at 48 h). (Experiments were repeated a minimum of five times; data are mean  $\pm$  SD.) † $P < 0.0001$ . \* $P < 0.001$ .

The use of two different methodologies relates to the different geographical locations of sample acquisition and analysis. Both techniques are considered reliable and are well validated. A small systematic bias, related to the assay used, would not in any way affect the findings or conclusions of our study.

#### UCP2 RNA interference increases *ACE* mRNA expression

Most importantly, however, our data suggest that this association may partly result from *UCP2*'s modulation of *ACE* expression. We confirmed the expression of *UCP2* reported in endothelial cells of diverse origin [60–63]. Those of the vasculature are central to the pathophysiology of atherosclerosis. Indeed, *UCP2* genotype is associated with the development of vascular disease [44], whilst *ACE* inhibition appears protective [64].

In HUVECs, a threefold to sixfold reduction in *UCP2* mRNA (induced by transfection with two separate and different

siRNA against *UCP2*) was reproducibly associated with an increase in *ACE* mRNA expression (1.2–1.4-fold at 30 h, and a near doubling at 48 h,  $P < 0.01$ ) – the scale of altered *ACE* expression (1.2–1.8-fold) by *UCP2* RNA interference being similar to that observed in the physiological context [65–68]. We cannot discount an additional influence on *ACE* stalk cleavage, however, and would advocate further investigation of this possibility.

#### Is there negative feedback between *UCP2* and *ACE* at the cellular level?

UCPs regulate mitochondrial metabolism. Mitochondrial regulation by RAS [7,9,20,25,69] may partly be mediated through modulation of UCP expression: Ang II upregulates expression of tissue *UCP1* in brown fat [52] and *UCP2* expression in brain [70], pancreatic beta-cells [53,71], and hepatic [72], renal [73] and cardiac [74] tissue. *ACE* inhibition reduces *UCP2* expression in adipose and cardiac tissue [68,75], whilst adipose

UCP<sub>3</sub> expression is reduced in AT<sub>2</sub>R knockout rodents [54]. However, Ang II's influence on UCP expression may be both tissue and context dependent, given the existence of seemingly conflicting data: in other studies, Ang II action at the AT<sub>1</sub>R *reduces* cardiac UCP<sub>2</sub> and UCP<sub>3</sub> expression [76]; adipose UCP<sub>1</sub> expression is *elevated* in AT<sub>1</sub>R gene knockout mice [77] and those treated with AT<sub>1</sub>R antagonists [78]; whilst ACE inhibition may have no effect on cardiac/skeletal muscle UCP<sub>3</sub> upregulation in response to thyroid hormones [79] or may actually increase UCP<sub>2</sub> expression in retinal tissue [80].

Meanwhile, RAS influences whole-body metabolism in other ways (e.g. through altered adipocyte function [4] and hepatic metabolism [6]). Given this, our data suggest several hypotheses. Firstly, ACE-UCPs feedback control may exist: this would function by Ang II altering mitochondrial function through changes in UCP expression, the latter feeding back to change Ang II synthesis through regulation of ACE expression. Secondly, UCPs might be considered to regulate mitochondrial metabolism through changes in coupling, but also through independent mitochondrial effects of Ang II. Such hypotheses would be supported were UCP expression is shown to regulate that of ACE in cells beyond those derived from the endothelium.

#### **The regulation of endocrine sACE by cellular UCP may represent a novel interface between local cellular metabolism and endocrine metabolic regulation**

UCP<sub>2</sub> negatively regulates both pancreatic  $\beta$  cell glucose-stimulated insulin secretion [81] and central neuronal glucose control of peripheral glucose utilisation [82]. Fatty acids induce both the expression and activity of UCP<sub>2</sub> in pancreatic  $\beta$  cells [83,84], and superoxide activation of UCP<sub>2</sub> is dependent on the presence of fatty acids [35]. Skeletal muscle UCP<sub>2</sub> and UCP<sub>3</sub> mRNA expression is induced by a high fat diet [85], and plasma free fatty acid levels are positively correlated with cardiac UCP<sub>2</sub> protein levels [66]. Starvation leads to the depletion of glycogen stores and an increased reliance on energy transduction from fatty acid oxidation. A similar period of starvation reduces sACE activity [86] and also increases UCP expression in skeletal muscle [65] – possibly as a protective mechanism against oxidative stress [35]. Furthermore, lower ACE activity in HUVECs promotes a survival advantage during starvation [87]. Perhaps of greater relevance, RAS antagonists prevent diabetes and improve insulin sensitivity (reviewed in [18]), whilst the RAS appears to play a role in the pathogenesis of the 'metabolic syndrome' (hypertension/impaired glucose tolerance/dyslipidaemia) [17,88,89]. Indeed, increased RAS activity is common in obesity and is considered a possible link with associated diabetes and hypertension [89]. In this regard, elevated RAS activity in adipocytes may play a particular role [90], raising the prospect that the recognised association between UCP<sub>2/3</sub> genotype and obesity/diabetes [41,42,45,46,49,91,92] might be partly adipose-RAS mediated. This does not discount, of course, a role for elevated RAS activity of endothelial (and UCP regulated) origin also playing a role. However, we would advocate further experiments to explore the influence of adipocyte UCP expression on that of ACE.

Similarly, UCP<sub>3-55C/UCP2-866A</sub> haplotype is associated with training-related gains in muscle performance [50], and it is tempting to speculate that some of this effect might be ACE mediated, given the existence of similar associations with ACE genotype [51].

#### **Future directions**

Whilst confident in the validity of the observations we have made, the implications remain speculative. Further studies are also required to explore the means by which UCP might alter ACE expression: is it direct or mediated, for instance, via altered ROS activity? Inhibition of UCP<sub>2</sub> or UCP<sub>3</sub> could induce ROS and thereby increase ACE activity. Might UCPs additionally alter sACE activity through ACE stalk cleavage and thus increase release into the circulation? In such regards, real-time PCR analysis of the expression of other RAS components might be performed in HUVECs, transfected in the manner that we have described. RAS activity can prove protective to blood vessels (especially, perhaps, through activation of AT<sub>2</sub>R rather than AT<sub>1</sub>R) – and UCP's role in regulating such vasoprotective effects is worthy of exploration (given that reduced ROS activity would also be vasoprotective). Recent data also suggest a role for mitochondrial-associated membrane RAS in regulating mitochondrial function – and the study of ACE activity in such regions in response to altered UCP expression might also be suggested. Exome sequencing may help identify the precise functional UCP<sub>2/3</sub> variant affecting sACE activity. Experimentation should also be extended to other cell types.

## **Materials and methods**

### **Genetic studies**

The association of UCP<sub>3/2</sub> genotype with sACE activity was explored in two distinct cohorts of European Caucasians: young healthy British men and adult Danish patients with type 1 diabetes. Ethics committee approval was obtained, as was written informed consent from all participants, with study protocols adhering to the Declaration of Helsinki (Defence Medical Services Clinical Research Committee at the Army Training Regiment, Basingbourn, UK, and Hillerød Hospital, Hillerød, Denmark).

### **Subjects**

The HMAR study sample consisted of 250 consecutive healthy male Caucasian British Army recruits (mean age 19.4 ± 2.2 years), as previously described [93], 212 of whom had complete genotypic data.

The T1DM patients study comprised 262 consecutive Danish adults (≥18 years old; 117 women; mean age 45.5 ± 13.7 years) with a >2 year history of T1DM, as previously described [94]. Analysis was restricted to the 210 with complete genotype data who were both ACEI and ARB naïve.

Genomic DNA was extracted from 10 ml EDTA venous blood. Serum was aspirated from centrifuged citrated blood and stored at –20°C for subsequent blinded analysis of sACE.



### Measurement of sACE activity

For the HMAR study, sACE was assayed with a modified fluorometric method using carbobenzoxy-phenyl-alanyl-histidyl-leucine (Z-phe-his-leu) as a substrate [95]. Interassay and intraassay coefficients of variation were 13% and 11%, respectively. For the T1DM study, sACE was assessed using a commercial kinetic assay (Sigma Diagnostics, St Louis, MO, USA) based on the hydrolysis of the synthetic tripeptide *N*-[3-(2-furyl)acryloyl]-l-phenylalanyl-glycylglycine to furylacryloylphenylalanine and glycylglycine. ACE activity was determined by comparing sample reaction rate with that derived from an ACE reference. The use of two different methodologies relates to the different geographical locations of sample acquisition and analysis. The observed difference in mean sACE activity between two studies does not seem to be due to differences in the assays employed.

### Genotyping

*UCP3*-55C>T, *UCP2*-866G>A and *UCP2**DI* genotypes were determined by PCR amplification using published primers and conditions [41,45,48]. Products were resolved on a 7.5% polyacrylamide gel and confirmed by two independent technicians blind to all subject data, with discrepancies resolved by repeat genotyping.

### Influence of reducing UCP mRNA levels on cellular ACE expression

HUVECs (European Collection of Cell Cultures, Salisbury, UK) were cultured to 80% subconfluence before being cultured in serum-free EGM<sup>TM</sup> for 48 h to confluence prior to all experiments.

### siRNA transfection

Transfection was carried out according to the manufacturer's protocol. *ACE* (105310 and 103987) and *UCP2* (120334 and 120336) siRNA as well as positive (*GAPDH*, 4390849) and negative (4611) controls were purchased from Ambion (Applied Biosystems, Austin, TX, USA). siGLO Green control was purchased from Dharmacon (Lafayette, CO, USA). Briefly, cells were cultured in six-well plates until confluent. In optiMEM-1 (Invitrogen, Life Technologies Ltd, Paisley, UK), 200 nM siRNA (with or without the same quantity of siGLO siRNA) was diluted, with a final volume of 180 µl. Oligofectamine 10 µl (Invitrogen, Life Technologies Ltd, Paisley, UK) and 10 µl optiMEM-1 were premixed. Both mixtures were incubated for

10 min, then mixed together, and incubated for a further 25 min. The cells were washed with optiMEM-1 and covered with 800 µl fresh optiMEM. To each well, 200 µl of prepared mix siRNA + oligofectamine was added dropwise. The cells were incubated for 4 h at 36°C, after which a further 500 µl 30% foetal calf serum/optiMEM-1 was added. Total RNAs were extracted 24, 30 and 48 h after transfection.

### RNA extraction, reverse transcription and RT-PCR

Cellular RNA was isolated using the RNeasy® Mini Kit (Qiagen, Crawley, UK) spin protocol. The RNA was stored at -80°C and quantified using a nanodrop spectrophotometer (ND-8000, Labtech, East Sussex, UK) prior to reverse transcription. Resultant complementary DNA samples were stored at -20°C.

Human *ACE*, *UCP2*, *UCP3* and *GAPDH* (housekeeping gene) target sequences were amplified using forward and reverse primers (Table 2) by PCR to confirm co-expression. Amplification products were separated by electrophoresis on a 2% agarose gel against a 1 kb DNA ladder.

RNA was extracted at 24, 30 and 48 h after HUVECs were transfected with two different siRNAs against *UCP2* (siRNA1 and siRNA2). Quantitative RT-PCR was performed on ABI prism 7900HT. Assays Hs00174179\_m1, Hs00163349\_m1 and Hs01106052\_m1 were used in combination to TaqMan gene expression master mix to amplify *ACE*, *UCP2* and *UCP3* mRNA, respectively. Three housekeeping genes were used: *UBC* (Hs00824723\_m1), *β actin* (Hs99999903\_m1) and *GAPDH* (Hs99999905\_m1). We did not analyse for changes in expression of an unrelated gene to check for unintentional global translational repression by interferon activation by siRNA treatment. However, we did confirm that the expression of the three housekeeping genes, *UBC*, *β actin* and *GAPDH*, did not show a significant difference upon siRNA treatment of *UCP2*, by comparing each of the housekeeping genes with each other; that is, comparing the *UCP2* siRNA versus no treatment cells, there was no significant difference in *GAPDH* mRNA levels using *UBC* as the housekeeping control, and similarly with other pairwise comparisons. Each reaction was repeated three times in parallel and for each condition. Crossing thresholds (Ct) were obtained using relative quantification application on the SDS2-1 software (Applied Biosystems, Life Technologies Ltd, Paisley, UK). Any value that was not consistent with the rest of the triplicate was suppressed before analysis. As a positive control using *GAPDH* siRNA, *GAPDH* mRNA was down-regulated by a factor of 5.48 ( $P = 0.001$ ). The Ct values included in statistical

**Table 2.** Forward and reverse primers used during non-quantitative RT-PCR of human *ACE*, *UCP3* and *UCP2* and the housekeeping gene *GAPDH* and the resulting amplicon size

Gene	cDNA accession no.	Primers	Amplicon size, bp
h <i>GAPDH</i>	J04038	F: GGGGAAGGTGAAGGTCGGAGT R: CCTGGAAGATGGTGATGGGAT	228
h <i>UCP3</i>	U84763/AF050113	F: CCTCACTACCCGGATT R: GTTGACGATAGCATTCCCT	235
h <i>UCP2</i>	NM_003355/AF019409	F: GCTTTGAAGAACGGGAC R: CTGTAACCGGACTTTAGCA	296
h <i>ACE</i>	J04144	F: ACCAATGACACGGAAAG R: GTGGGTTTCGTTCCGG	207

analysis were the means of triplicates. Experiments were repeated between three and five times.

### Statistical analysis

Allele frequencies were estimated by gene counting. A  $\chi^2$  test was used to compare the observed numbers of each genotype with those expected for a population in Hardy–Weinberg equilibrium. LD between sites in pairwise combination was estimated [96]. One-way analysis of covariance (ANCOVA) tested for confounders. Univariate and multivariate analyses were used to measure significance of association. Differences in descriptive population variables and sACE were compared between genotype groups. For the whole sample, characteristics were compared between genotype groups (including those defined by the presence/absence of a specific allele) using one-way ANOVA, two-tailed unpaired *t*-tests, linear trend analysis and one-way ANCOVA with sex as a covariate, using either raw or log-transformed values as appropriate. Genotype association with sACE activity in the HMAR study was compared between genotype groups and allele groups using two-way ANOVA with repeated measures on one factor (time). All data were analysed using SPSS (SPSS Inc., IBM Corporation, USA) and Microsoft® Office Excel® 2007 (Microsoft Corporation 2006). Data are presented as means  $\pm$  standard deviation unless otherwise stated. *P* values of  $<0.05$  were considered statistically significant.

### Acknowledgements

We should like to thank the staff and recruits of ATR Bassingbourn for their help and support in providing samples for analysis of DNA and sACE activity.

The authors declare no conflict of interest.

This work was supported by The British Heart Foundation, which provides core funding to UCL Centre for Cardiovascular Genetics, and we express our thanks to them. H. M. was supported by the National Institute for Health Research University College London Hospitals Biomedical Research Centre.

### References

- Kumar R, Thomas CM, Yong QC, Chen W, et al. 2012. The intracrine renin–angiotensin system. *Clin Sci (Lond)* **123**: 273–84.
- Rigat B, Hubert C, Alhenc-Gelas F, Cambien F, et al. 1990. An insertion/deletion polymorphism in the angiotensin I-converting enzyme gene accounting for half the variance of serum enzyme levels. *J Clin Invest* **86**: 1343–6.
- Danser AH, Schalekamp MA, Bax WA, van den Brink AM, et al. 1995. Angiotensin-converting enzyme in the human heart. Effect of the deletion/insertion polymorphism. *Circulation* **92**: 1387–8.
- Cassis LA, Police SB, Yiannikouris F, Thatcher SE. 2008. Local adipose tissue renin–angiotensin system. *Curr Hypertens Rep* **10**: 93–8.
- Cheng Q, Leung PS. 2011. An update on the islet renin–angiotensin system. *Peptides* **32**: 1087–95.
- Reisenleiter F, Katz N, Gardemann A. 1996. Control of hepatic carbohydrate metabolism and haemodynamics in perfused rat liver by arterial and portal angiotensin II. *Eur J Gastroenterol Hepatol* **8**: 279–86.
- Cassis L, Helton M, English V, Burke G. 2002. Angiotensin II regulates oxygen consumption. *Am J Physiol Regul Integr Comp Physiol* **282**: R445–53.
- Matsumura T, Yoshihara H, Jeffs R, Takei Y, et al. 1992. Hormones increase oxygen uptake in periportal and pericentral regions of the liver lobule. *Am J Physiol* **262**: G645–50.
- Colquhoun EQ, Hettiarachchi M, Ye JM, Richter EA, et al. 1988. Vasopressin and angiotensin II stimulate oxygen uptake in the perfused rat hindlimb. *Life Sci* **43**: 1747–54.
- Deng A, Tang T, Singh P, Wang C, et al. 2009. Regulation of oxygen utilization by angiotensin II in chronic kidney disease. *Kidney Int* **75**: 197–204.
- Montgomery HE, Marshall R, Hemingway H, Myerson S, et al. 1998. Human gene for physical performance. *Nature* **393**: 221–2.
- Tsianos G, Eleftheriou KI, Hawe E, Woolrich L, et al. 2005. Performance at altitude and angiotensin I-converting enzyme genotype. *Eur J Appl Physiol* **93**: 630–3.
- Kalson NS, Thompson J, Davies AJ, Stokes S, et al. 2009. The effect of angiotensin-converting enzyme genotype on acute mountain sickness and summit success in trekkers attempting the summit of Mt. Kilimanjaro (5,895 m). *Eur J Appl Physiol* **105**: 373–9.
- Thompson J, Raitt J, Hutchings L, Drenos F, et al. 2007. Angiotensin-converting enzyme genotype and successful ascent to extreme high altitude. *High Alt Med Biol* **8**: 278–85.
- Woods DR, World M, Rayson MP, Williams AG, et al. 2002. Endurance enhancement related to the human angiotensin I-converting enzyme I-D polymorphism is not due to differences in the cardiorespiratory response to training. *Eur J Appl Physiol* **86**: 240–4.
- Williams AG, Rayson MP, Jubb M, World M, et al. 2000. The ACE gene and muscle performance. *Nature* **403**: 614.
- Xi B, Ruitter R, Chen J, Pan H, et al. 2012. The ACE insertion/deletion polymorphism and its association with metabolic syndrome. *Metabolism* **61**: 891–7.
- Al-Mallah M, Khawaja O, Sinno M, Alzohaili O, et al. 2010. Do angiotensin converting enzyme inhibitors or angiotensin receptor blockers prevent diabetes mellitus? A meta-analysis. *Cardiol J* **17**: 448–56.
- Savarese G, Costanzo P, Cleland JG, Vassallo E, et al. 2013. A meta-analysis reporting effects of angiotensin-converting enzyme inhibitors and angiotensin receptor blockers in patients without heart failure. *J Am Coll Cardiol* **61**: 131–42.
- Re RN, Cook JL. 2010. The mitochondrial component of intracrine action. *Am J Physiol Heart Circ Physiol* **299**: H577–83.
- Mailloux RJ, Harper ME. 2011. Uncoupling proteins and the control of mitochondrial reactive oxygen species production. *Free Radic Biol Med* **51**: 1106–15.
- Re RN. 2003. Cardiac angiotensin II: an intracrine hormone? *Am J Hypertens* **16**: 426–7.
- Robertson AL, Jr., Khairallah PA. 1971. Angiotensin II: rapid localization in nuclei of smooth and cardiac muscle. *Science* **172**: 1138–9.
- Huang J, Hara Y, Anrather J, Speth RC, et al. 2003. Angiotensin II subtype 1A (AT1A) receptors in the rat sensory vagal complex: subcellular localization and association with endogenous angiotensin. *Neuroscience* **122**: 21–36.
- Abadir PM, Foster DB, Crow M, Cooke CA, et al. 2011. Identification and characterization of a functional mitochondrial angiotensin system. *Proc Natl Acad Sci U S A* **108**: 14849–54.
- Clausmeyer S, Sturzebecher R, Peters J. 1999. An alternative transcript of the rat renin gene can result in a truncated prorenin that is transported into adrenal mitochondria. *Circ Res* **84**: 337–44.
- Clausmeyer S, Reinecke A, Farrenkopf R, Unger T, et al. 2000. Tissue-specific expression of a rat renin transcript lacking the coding sequence for the prefragment and its stimulation by myocardial infarction. *Endocrinology* **141**: 2963–70.
- Peters J, Clausmeyer S. 2002. Intracellular sorting of renin: cell type specific differences and their consequences. *J Mol Cell Cardiol* **34**: 1561–8.
- Peters J, Kranzlin B, Schaeffer S, Zimmer J, et al. 1996. Presence of renin within intramitochondrial dense bodies of the rat adrenal cortex. *Am J Physiol* **271**: E439–50.
- Borecky J, Maia IG, Arruda P. 2001. Mitochondrial uncoupling proteins in mammals and plants. *Biosci Rep* **21**: 201–12.
- Ramsden DB, Ho PW, Ho JW, Liu HF, et al. 2012. Human neuronal uncoupling proteins 4 and 5 (UCP4 and UCP5): structural properties, regulation, and physiological role in protection against oxidative stress and mitochondrial dysfunction. *Brain Behav* **2**: 468–78.
- Jezeq P, Garlid KD. 1998. Mammalian mitochondrial uncoupling proteins. *Int J Biochem Cell Biol* **30**: 1163–8.
- Negre-Salvayre A, Hirtz C, Carrera G, Cazenave R, et al. 1997. A role for uncoupling protein-2 as a regulator of mitochondrial hydrogen peroxide generation. *Faseb J* **11**: 809–15.
- Casteilla L, Rigoulet M, Penicaud L. 2001. Mitochondrial ROS metabolism: modulation by uncoupling proteins. *IUBMB Life* **52**: 181–8.
- Echtay KS, Roussel D, St-Pierre J, Jekabsons MB, et al. 2002. Superoxide activates mitochondrial uncoupling proteins. *Nature* **415**: 96–9.

36. **Speijer D.** 2014. How the mitochondrion was shaped by radical differences in substrates: what carnitine shuttles and uncoupling tell us about mitochondrial evolution in response to ROS. *Bioessays* **36**: 634–43.
37. **Donadelli M, Dando I, Fiorini C, Palmieri M.** 2014. UCP2, a mitochondrial protein regulated at multiple levels. *Cell Mol Life Sci* **71**: 1171–90.
38. **Pecqueur C, Bui T, Gelly C, Hauchard J,** et al. 2008. Uncoupling protein-2 controls proliferation by promoting fatty acid oxidation and limiting glycolysis-derived pyruvate utilization. *FASEB J* **22**: 9–18.
39. **Nisoli E, Carruba MO, Tonello C, Macor C,** et al. 2000. Induction of fatty acid translocase/CD36, peroxisome proliferator-activated receptor- $\gamma$ 2, leptin, uncoupling proteins 2 and 3, and tumor necrosis factor- $\alpha$  gene expression in human subcutaneous fat by lipid infusion. *Diabetes* **49**: 319–24.
40. **Diano S, Horvath TL.** 2012. Mitochondrial uncoupling protein 2 (UCP2) in glucose and lipid metabolism. *Trends Mol Med* **18**: 52–8.
41. **Esterbauer H, Schneiter C, Oberkofler H, Ebenbichler C,** et al. 2001. A common polymorphism in the promoter of UCP2 is associated with decreased risk of obesity in middle-aged humans. *Nat Genet* **28**: 178–83.
42. **Krempler F, Esterbauer H, Weitgasser R, Ebenbichler C,** et al. 2002. A functional polymorphism in the promoter of UCP2 enhances obesity risk but reduces type 2 diabetes risk in obese middle-aged humans. *Diabetes* **51**: 3331–5.
43. **Sesti G, Cardellini M, Marini MA, Frontoni S,** et al. 2003. A common polymorphism in the promoter of UCP2 contributes to the variation in insulin secretion in glucose-tolerant subjects. *Diabetes* **52**: 1280–3.
44. **Dhamrait SS, Stephens JW, Cooper JA, Acharya J,** et al. 2004. Cardiovascular risk in healthy men and markers of oxidative stress in diabetic men are associated with common variation in the gene for uncoupling protein 2. *Eur Heart J* **25**: 468–75.
45. **Cassell PG, Neverova M, Janmohamed S, Uwakwe N,** et al. 1999. An uncoupling protein 2 gene variant is associated with a raised body mass index but not Type II diabetes. *Diabetologia* **42**: 688–92.
46. **Walder K, Norman RA, Hanson RL, Schrauwen P,** et al. 1998. Association between uncoupling protein polymorphisms (UCP2–UCP3) and energy metabolism/obesity in Pima Indians. *Hum Mol Genet* **7**: 1431–5.
47. **Pecqueur C, Cassard-Doulicier AM, Raimbault S, Miroux B,** et al. 1999. Functional organization of the human uncoupling protein-2 gene, and juxtaposition to the uncoupling protein-3 gene. *Biochem Biophys Res Commun* **255**: 40–6.
48. **Cassell PG, Saker PJ, Huxtable SJ, Kousta E,** et al. 2000. Evidence that single nucleotide polymorphism in the uncoupling protein 3 (UCP3) gene influences fat distribution in women of European and Asian origin. *Diabetologia* **43**: 1558–64.
49. **Meirhaeghe A, Amouyel P, Helbecque N, Cottel D,** et al. 2000. An uncoupling protein 3 gene polymorphism associated with a lower risk of developing Type II diabetes and with atherogenic lipid profile in a French cohort. *Diabetologia* **43**: 1424–8.
50. **Dhamrait SS, Williams AG, Day SH, Skipworth JR,** et al. 2012. Variation in the uncoupling protein 2 and 3 genes and human performance. *J Appl Physiol*.
51. **Puthuchery Z, Skipworth JR, Rawal J, Loosemore M,** et al. 2011. The ACE gene and human performance: 12 years on. *Sports Med* **41**: 433–48.
52. **de Kloet AD, Krause EG, Scott KA, Foster MT,** et al. 2011. Central angiotensin II has catabolic action at white and brown adipose tissue. *Am J Physiol Endocrinol Metab* **301**: E1081–91.
53. **Chu KY, Leung PS.** 2007. Angiotensin II type 1 receptor antagonism mediates uncoupling protein 2-driven oxidative stress and ameliorates pancreatic islet beta-cell function in young type 2 diabetic mice. *Antioxid Redox Signal* **9**: 869–78.
54. **Yvan-Charvet L, Even P, Bloch-Faure M, Guerre-Millo M,** et al. 2005. Deletion of the angiotensin type 2 receptor (AT2R) reduces adipose cell size and protects from diet-induced obesity and insulin resistance. *Diabetes* **54**: 991–9.
55. **Pedersen-Bjergaard U, Nielsen SL, Akram K, Perrild H,** et al. 2009. Angiotensin-converting enzyme and angiotensin II receptor subtype 2 genotypes in type 1 diabetes and severe hyperglycaemia requiring emergency treatment: a case cohort study. *Pharmacogenet Genomics* **19**: 864–8.
56. **Ustundag B, Canatan H, Cinkilinc N, Halifeoglu I,** et al. 2000. Angiotensin converting enzyme (ACE) activity levels in insulin-independent diabetes mellitus and effect of ACE levels on diabetic patients with nephropathy. *Cell Biochem Funct* **18**: 23–8.
57. **Keavney B, McKenzie CA, Connell JM, Julier C,** et al. 1998. Measured haplotype analysis of the angiotensin-I converting enzyme gene. *Hum Mol Genet* **7**: 1745–51.
58. **Rieder MJ, Taylor SL, Clark AG, Nickerson DA.** 1999. Sequence variation in the human angiotensin converting enzyme. *Nat Genet* **22**: 59–62.
59. **Cox R, Bouzekri N, Martin S, Southam L,** et al. 2002. Angiotensin-1-converting enzyme (ACE) plasma concentration is influenced by multiple ACE-linked quantitative trait nucleotides. *Hum Mol Genet* **11**: 2969–77.
60. **Duval C, Negre-Salvayre A, Dogilo A, Salvayre R,** et al. 2002. Increased reactive oxygen species production with antisense oligonucleotides directed against uncoupling protein 2 in murine endothelial cells. *Biochem Cell Biol* **80**: 757–64.
61. **Dikov D, Aulbach A, Muster B, Drose S,** et al. 2010. Do UCP2 and mild uncoupling improve longevity? *Exp Gerontol* **45**: 586–95.
62. **Wu Y, Zhang C, Dong Y, Wang S,** et al. 2012. Activation of the AMP-activated protein kinase by eicosapentaenoic acid (EPA, 20:5 n-3) improves endothelial function in vivo. *PLoS One* **7**: e35508.
63. **Qian S, Huo D, Wang S, Qian Q.** 2011. Inhibition of glucose-induced vascular endothelial growth factor expression by *Salvia miltiorrhiza* hydrophilic extract in human microvascular endothelial cells: evidence for mitochondrial oxidative stress. *J Ethnopharmacol* **137**: 985–91.
64. **Fox KM, Investigators E.** 2003. Efficacy of perindopril in reduction of cardiovascular events among patients with stable coronary artery disease: randomised, double-blind, placebo-controlled, multicentre trial (the EUROPA study). *Lancet* **362**: 782–8.
65. **Millet L, Vidal H, Andreelli F, Larrouy D,** et al. 1997. Increased uncoupling protein-2 and -3 mRNA expression during fasting in obese and lean humans. *J Clin Invest* **100**: 2665–70.
66. **Murray AJ, Anderson RE, Watson GC, Radda GK,** et al. 2004. Uncoupling proteins in human heart. *Lancet* **364**: 1786–8.
67. **Fishel RS, Thourani V, Eisenberg SJ, Shai SY,** et al. 1995. Fibroblast growth factor stimulates angiotensin converting enzyme expression in vascular smooth muscle cells. Possible mediator of the response to vascular injury. *J Clin Invest* **95**: 377–87.
68. **Murakami K, Mizushige K, Noma T, Tsuji T,** et al. 2002. Perindopril effect on uncoupling protein and energy metabolism in failing rat hearts. *Hypertension* **40**: 251–5.
69. **Inoue N, Kinugawa S, Suga T, Yokota T,** et al. 2012. Angiotensin II-induced reduction in exercise capacity is associated with increased oxidative stress in skeletal muscle. *Am J Physiol Heart Circ Physiol* **302**: H1202–10.
70. **Chan SH, Wu CW, Chang AY, Hsu KS,** et al. 2010. Transcriptional up-regulation of brain-derived neurotrophic factor in rostral ventrolateral medulla by angiotensin II: significance in superoxide homeostasis and neural regulation of arterial pressure. *Circ Res* **107**: 1127–39.
71. **Saitoh Y, Hongwei W, Ueno H, Mizuta M,** et al. 2010. Candesartan attenuates fatty acid-induced oxidative stress and NAD(P)H oxidase activity in pancreatic beta-cells. *Diabetes Res Clin Pract* **90**: 54–9.
72. **Chen YH, Yuan L, Chen YY, Qi CJ.** 2008. The effects of renin-angiotensin system blockade on the liver steatosis in rats on long-term high-fat diet. *Zhonghua Nei Ke Za Zhi* **47**: 197–201.
73. **de Cavanagh EM, Piotrkowski B, Basso N, Stella I,** et al. 2003. Enalapril and losartan attenuate mitochondrial dysfunction in aged rats. *FASEB J* **17**: 1096–8.
74. **Guo P, Nishiyama A, Rahman M, Nagai Y,** et al. 2006. Contribution of reactive oxygen species to the pathogenesis of left ventricular failure in Dahl salt-sensitive hypertensive rats: effects of angiotensin II blockade. *J Hypertens* **24**: 1097–104.
75. **Premaratna SD, Manickam E, Begg DP, Rayment DJ,** et al. 2012. Angiotensin-converting enzyme inhibition reverses diet-induced obesity, insulin resistance and inflammation in C57BL/6J mice. *Int J Obes (Lond)* **36**: 233–43.
76. **Hongo M, Ishizaka N, Furuta K, Yahagi N,** et al. 2009. Administration of angiotensin II, but not catecholamines, induces accumulation of lipids in the rat heart. *Eur J Pharmacol* **604**: 87–92.
77. **Kouyama R, Suganami T, Nishida J, Tanaka M,** et al. 2005. Attenuation of diet-induced weight gain and adiposity through increased energy expenditure in mice lacking angiotensin II type 1a receptor. *Endocrinology* **146**: 3481–9.
78. **Araki K, Masaki T, Katsuragi I, Tanaka K,** et al. 2006. Telmisartan prevents obesity and increases the expression of uncoupling protein 1 in diet-induced obese mice. *Hypertension* **48**: 51–7.
79. **Queiroz MS, Shao Y, Ismail-Beigi F.** 2004. Effect of thyroid hormone on uncoupling protein-3 mRNA expression in rat heart and skeletal muscle. *Thyroid* **14**: 177–85.
80. **Zheng Z, Chen H, Ke G, Fan Y,** et al. 2009. Protective effect of perindopril on diabetic retinopathy is associated with decreased vascular endothelial growth factor-to-pigment epithelium-derived factor ratio: involvement of a mitochondria-reactive oxygen species pathway. *Diabetes* **58**: 954–64.
81. **Chan CB, MacDonald PE, Saleh MC, Johns DC,** et al. 1999. Overexpression of uncoupling protein 2 inhibits glucose-stimulated insulin secretion from rat islets. *Diabetes* **48**: 1482–6.
82. **Kong D, Vong L, Parton LE, Ye C,** et al. 2010. Glucose stimulation of hypothalamic MCH neurons involves K(ATP) channels, is modulated by UCP2, and regulates peripheral glucose homeostasis. *Cell Metab* **12**: 545–52.
83. **Medvedev AV, Robidoux J, Bai X, Cao W,** et al. 2002. Regulation of the uncoupling protein-2 gene in INS-1 beta-cells by oleic acid. *J Biol Chem* **277**: 42639–44.

84. **Koshkin V, Wang X, Scherer PE, Chan CB**, et al. 2003. Mitochondrial functional state in clonal pancreatic beta-cells exposed to free fatty acids. *J Biol Chem* **278**: 19709–15.
85. **Schrauwen P, Hoppeler H, Billeter R, Bakker AH**, et al. 2001. Fiber type dependent upregulation of human skeletal muscle UCP2 and UCP3 mRNA expression by high-fat diet. *Int J Obes Relat Metab Disord* **25**: 449–56.
86. **Butkus NE, Burman KD, Smallridge RC**. 1987. Angiotensin-converting enzyme activity decreases during fasting. *Horm Metab Res* **19**: 76–9.
87. **Hamdi HK, Castellon R**. 2004. A genetic variant of ACE increases cell survival: a new paradigm for biology and disease. *Biochem Biophys Res Commun* **318**: 187–91.
88. **Putnam K, Shoemaker R, Yiannikouris F, Cassis LA**. 2012. The renin-angiotensin system: a target of and contributor to dyslipidemias, altered glucose homeostasis, and hypertension of the metabolic syndrome. *Am J Physiol Heart Circ Physiol* **302**: H1219–30.
89. **Kalupahana NS, Moustaid-Moussa N**. 2012. The renin-angiotensin system: a link between obesity, inflammation and insulin resistance. *Obes Rev* **13**: 136–49.
90. **Engeli S, Schling P, Gorzelniak K, Boschmann M**, et al. 2003. The adipose-tissue renin-angiotensin-aldosterone system: role in the metabolic syndrome? *Int J Biochem Cell Biol* **35**: 807–25.
91. **Yanovski JA, Diament AL, Sovik KN, Nguyen TT**, et al. 2000. Associations between uncoupling protein 2, body composition, and resting energy expenditure in lean and obese African American, white, and Asian children. *Am J Clin Nutr* **71**: 1405–20.
92. **Otobe S, Clement K, Dina C, Pelloux V**, et al. 2000. A genetic variation in the 5' flanking region of the UCP3 gene is associated with body mass index in humans in interaction with physical activity. *Diabetologia* **43**: 245–9.
93. **Brull DJ, Dhamrait S, Moulding R, Rumley A**, et al. 2002. The effect of fibrinogen genotype on fibrinogen levels after strenuous physical exercise. *Thromb Haemost* **87**: 37–41.
94. **Pedersen-Bjergaard U, Agerholm-Larsen B, Pramming S, Hougaard P**, et al. 2001. Activity of angiotensin-converting enzyme and risk of severe hypoglycaemia in type 1 diabetes mellitus. *Lancet* **357**: 1248–53.
95. **Depierre D, Roth M**. 1975. Fluorimetric determination of dipeptidyl carboxypeptidase. (Angiotensin-I-converting enzyme). *Enzyme* **19**: 65–70.
96. **Chakravarti A, Buetow KH, Antonarakis SE, Waber PG**, et al. 1984. Nonuniform recombination within the human beta-globin gene cluster. *Am J Hum Genet* **36**: 1239–58.