

Surface charging of thick porous water ice layers relevant for ion sputtering experiments

A. Galli^{a,1}, A. Vorburger^a, A. Pommerol^a, P. Wurza^a, B. Jost^a, O. Poch^a, Y. Brouet^a, M. Tulej^a, N. Thomas^a

^a*Physikalisches Institut, University of Bern, Bern, Switzerland*

Abstract

We use a laboratory facility to study the sputtering properties of centimeter-thick porous water ice subjected to the bombardment of ions and electrons to better understand the formation of exospheres of the icy moons of Jupiter. Our ice samples are as similar as possible to the expected moon surfaces but surface charging of the samples during ion irradiation may distort the experimental results. We therefore monitor the time scales for charging and discharging of the samples when subjected to a beam of ions. These experiments allow us to derive an electric conductivity of deep porous ice layers. The results imply that electron irradiation and sputtering play a non-negligible role for certain plasma conditions at the icy moons of Jupiter. The observed ion sputtering yields from our ice samples are similar to previous experiments where compact ice films were sputtered off a micro-balance.

Keywords: Ices, Jupiter satellites, Experimental techniques, Surface charging, Sputtering

1. Introduction

The vast majority of celestial objects in the outer Solar System are bodies with ice-rich surfaces. This includes icy moons like Europa, Ganymede, Callisto, Enceladus, Triton, but also the Trans-Neptunian Objects and comets. 5 The surface of these objects directly interacts with the space environment, resulting in sputtering, radiolysis, and sublimation. These processes lead to a tenuous, surface-bound atmosphere. For the Galilean icy moons, it is often

¹Corresponding author, E-mail address: *andre.galli@space.unibe.ch*

referred to as ‘exosphere’ since the mean free path length usually is larger than the atmospheric scale height (Marconi, 2007; Plainaki et al., 2012).
10 A few species of these atmospheres have been measured by remote sensing techniques. At Callisto, only CO₂ has been detected so far, with a surface pressure as low as 10⁻⁸ mbar (Carlson, 1999). For Ganymede and Europa, Hall et al. (1998) reported the detection of oxygen airglow, implying atmospheric O₂ pressures on the order of 10⁻⁸ mbar (column densities of several
15 10¹⁴ cm⁻²). Atomic oxygen, one to two orders of magnitude more tenuous, was observed by Hall et al. (1995) at Europa. The O and O₂ column densities of Europa were later confirmed during the CASSINI flyby with the Ultraviolet Imaging Spectrograph (Hansen et al., 2005). A tenuous Na and K atmosphere around Europa was detected with ground-based observation in
20 the visible spectral range (Brown and Hill, 1996; Brown et al., 2001). Barth et al. (1997) reported the detection of atomic hydrogen in Ganymede’s atmosphere with the Galileo ultraviolet spectrometer, whereas Spencer et al. (1995) and Noll et al. (1996) reported the detection of condensed or trapped O₂ and O₃ in the surface of Ganymede. The latter discovery showed that the
25 atmospheric oxygen species are indeed surface-bound.

Unfortunately, properties of ices at low pressures and temperatures, such as the sputtering efficiency due to ion bombardment, are difficult to predict theoretically and it is not always clear how results from laboratory experiments should be applied to real ice surfaces in the Solar System (Johnson
30 et al., 2004). This limits the predictive capability of any surface and atmosphere model. The JUICE mission (ESA, 2014), scheduled to visit Europa, Ganymede, and Callisto in the years 2030–2032, will allow to directly sample the particles ejected from the surface and also to observe the atmosphere at infrared, visible, and ultraviolet wavelengths. The design of instruments
35 would benefit from better constrained parameters for surface release processes.

Over the last two decades, several laboratory experiments simulating particle irradiation of water ice on the surface of icy moons have been performed (Shi et al., 1995; Orlando and Sieger, 2003; Famá et al., 2008; Shi et al., 2012),
40 and these data have been put into the context of planetary science (Johnson et al., 2004; Cassidy et al., 2010). Most approaches aimed at deriving the sputtering yields, i.e., the ratio of ejected water ice molecules per impinging ion or electron as a function of impactor energy. The favourite technique used so far consists of vapour depositing a thin film (100 – 1000 nm) of
45 compact (density ≈ 0.9 g cm⁻³) amorphous ice onto a quartz microbalance

(Famá et al., 2008; Shi et al., 2012). The ice film is then gradually sputtered and the observed frequency change of the quartz crystal allows to deduce the sputtering yield. In contrast, we experiment with ions impacting a 0.9 cm thick sample of porous water ice to simulate the regolith on the surface of an icy moon. “Porosity” in this study always implies macroporosity, i.e.,
50 micron-sized gaps between grains, as opposed to nano-scale pores within a grain (Rodriguez-Nieva et al., 2011). Our approach allows us to produce samples with chemical impurities and to study the impact of porosity on release processes. So far, sputtering models disagree whether the sputtering
55 yield from a porous solid should be substantially lower (Johnson, 1989; Cassidy and Johnson, 2005) or similar (Cassidy et al., 2013) compared to the same non-porous solid.

Experimental difficulties arising from sputtering experiments with a cm-thick ice sample include a strong surface charging due to ion irradiation and
60 a more urgent need to characterize the sample (for instance density, chemical alterations, and possible temperature gradients between the bottom and the surface). Our first sputtering experiments with H^+ , O^+ , O_2^+ , and Ar^+ ions (Galli et al., 2015) indicated that surface charging of the ice sample could affect estimates of the sputtering yield. The charging also limited the number
65 of unbiased experiments per day since the discharging times exceeded one hour for cold ($T < 100$ K) ice if no countermeasures were employed. Our improved set-up for sputtering experiments with porous ice allows us to detect and counteract surface charging caused by ion irradiation. This paper describes the new set-up and presents the first Ar^+ sputtering results
70 obtained with it.

2. Experiment set-up

The MEFISTO test facility for space instrument calibration has been developed over more than a decade (Marti et al., 2001; Hohl, 2002; Hohl et al., 2005). It consists of a vacuum chamber and an electron-cyclotron-
75 resonance ion source. Wieser et al. (2016) examined the charge exchange of an ion beam on an ice surface in MEFISTO to prepare for an energetic neutral atom imaging instrument on board JUICE. We present here how the same test facility and a similar set-up can be used to simulate ion sputtering of porous icy material in space.

80 *2.1. Sample preparation*

We prepared porous water ice with the SPIPA (Setup for the Production of Icy Planetary Analogs) setup described as Method #1 by Jost et al. (2016). An ultrasonic nebulizer produces micrometer sized droplets of salty water (99% weight percent de-ionized water and 1% NaCl). We added the NaCl to discriminate sputtering of the salty ice from sputtering of the top frost layer originating from exposure to air. The water droplets were frozen and piled up in a cooled bowl ($T = -50^{\circ}\text{C}$) as spherical ice particles with diameters of $4.5 \pm 2.5 \mu\text{m}$ (left panel in Fig. 1). Once enough ice was produced, we poured liquid nitrogen into the bowl and stirred up the suspension with a spoon. This method prevented the grains from sintering and allowed us to pour the ice into the sample holder. A microscope image of ice grains after this step is shown in the right panel of Fig. 1. We then compressed the ice in the sample holder with the spoon until we had a smooth surface at the same level as the metal rim. We did this to improve the temperature conductivity compared to the very porous ice in the ice bowl. The bulk density of the final ice sample ranged between 200 and 300 kg m^{-3} , corresponding to an average porosity of 75%.

The ice in the sample holder is a realistic approximation for surfaces on the icy moons of Jupiter, considering the limited knowledge about these surfaces. The temperature of the ice in the sample holder was kept at temperatures between 90 and 140 K, representative for the surfaces of Ganymede (Marconi, 2007) and Europa (Rodriguez et al., 2009). The Na content of our ice is representative for ice-rich areas on Europa's surface (the average mass abundance of Na on Europa's ridged plains calculates to 2% (Shirley et al., 2010)). Domingue and Verbiscer (1997) assume porosities ranging between 0.4 to almost 1.0 for the Galilean moons to fit solar phase curve reflectances. The authors conclude with respect to Europa: "The high porosity for Europa is consistent with a medium to fine-grained water frost." The grain size on the surface of the Galilean moons probably is somewhat larger than in our unsintered ice. Calvin et al. (1995) use typically 100 μm sized ice grains to fit infrared spectra. When the ion sputtering experiment in the vacuum chamber starts, the ice grains will have undergone sintering to a small degree because of the residence time in the freezer and in the vacuum chamber before the latter is cooled down to experiment temperatures. Moreover, the sample is covered with a thin water frost layer. However, sintering and frost deposition are also considered to reproduce infrared spectra of icy satellites

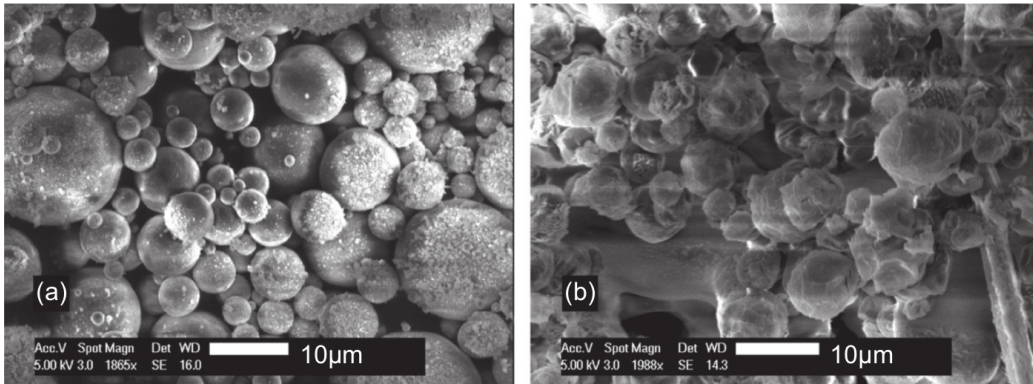


Figure 1: Scanning electron microscope images of two samples of water ice, reproduced from Fig. 5 in Jost et al. (2016). The spatial scale is shown by the scale bars to the bottom. a) Fresh sample produced by directly spraying the water vapour on a cold plate. The shape of the particles is almost perfectly spherical. Some of the particles are covered with frost, which had condensed on the sample during the transfer to the microscope. b) Fresh sample produced by mixing the fresh ice with liquid nitrogen. The shape looks more irregular because the suspension was stirred up with a spoon before it was poured into the sample holder.

(Grundy et al., 1999).

2.2. Experiment procedure

Figures 2 and 3 show a drawing and a photograph of our experiment
 120 set-up. The porous ice is inside an aluminum sample holder with a circular
 mound (radius 2 cm and depth 0.9 cm). The sample holder itself is screwed
 onto a steel plate which is being cooled with liquid nitrogen throughout the
 entire experiment. The ion beam impacts the ice sample at a flat angle of
 30° (from the left hand side in Fig. 3). This angle could not be varied during
 125 the suite of experiments described here as we tested a simplified set-up with-
 out a maneuverable mounting table. We will vary the ion incidence angle in
 future experiments because the sputtering yield is expected to decrease at
 steeper angles (see Section 3). Electrostatic deflection plates (labelled “Beam
 Guiding” in the sketch in Fig. 2) between the beam exit and the ice serve to
 130 direct the ion beam to any target area on the ice, the copper ring, or on the
 cooling plate around it. The copper ring around the ice acts as a Faraday
 cup measuring the current of impacting ions and electrons. The Faraday
 cup is operated at a positive potential of 18 V to prevent escaping secondary

135 electrons from distorting the measurement. An electron gun (nominal en-
ergy range 100 eV to 10 keV, manufacturer: Kimball Physics) and a mass
spectrometer (HAL quadrupole gas analyser, manufacturer: Hiden Analyt-
ical) are mounted to the ceiling of the vacuum chamber, 80 cm above the
ice sample. The electron gun is necessary to counter the surface charging
effect due to ions. The photograph in Fig. 3 was obtained at the start of
140 the experiment when water frost from the ambient air had condensed on all
cold surfaces. Afterwards we closed the chamber and started fast evacua-
tion. A close-up image of the ice sample obtained with a webcam was saved
in a regular interval. Because the electron gun, the mass spectrometer, and
the ion beam require a vacuum pressure of 10^{-6} mbar or lower we started
145 sputtering experiments only after pumping and cooling for roughly 20 hours.
The experiment usually ran during one week.

Throughout the measurements we relied on temperature sensors to mon-
itor the temperature of the chamber wall, the cooling plate, and of the ice
sample holder (note the wires attached to screws in Fig. 3). The surface
150 temperature of the ice cannot be measured with a sensor as the latter would
introduce a heat source to the porous ice and commercial infrared radiome-
ters are usually not sensitive to surface temperatures below 170 K (Brocard,
2008). Nevertheless, the effective surface temperature during sputtering ex-
periments must have been close to the temperature measured on the sample
holder for the following reason: The saturation vapour pressure for water
155 frost at 153 K is 1.4×10^{-7} mbar (Andreas, 2007). The chamber pressure
reached this level after 20 hours and the measured temperature was 143 K.
We did not observe sublimation of the ice in the sample holder during 8.5
hours at these conditions. The true surface temperature of the ice therefore
160 must have matched the measured temperature of the sample holder to better
than 10 K.

Due to surface charging, an ion beam that is initially directed at the cen-
tre of the ice is deflected sideways until it hits the copper ring. We either
waited for the ice in the sample holder to discharge on its own or we switched
165 on the electron gun to neutralize the charged surface. We continuously mon-
itored the temperature sensors, the chamber pressure, and the current on
the Faraday cup above the ice. From the timeseries of the current we de-
rived the charging and discharging timescales of the ice sample at different
temperatures. Two different pressure gauges at different places were used to
170 measure the chamber pressure. Pressure Gauge 1 in Fig. 2 is a Stabil-Ion
pressure gauge measuring at an accuracy of 10% and at a time resolution of

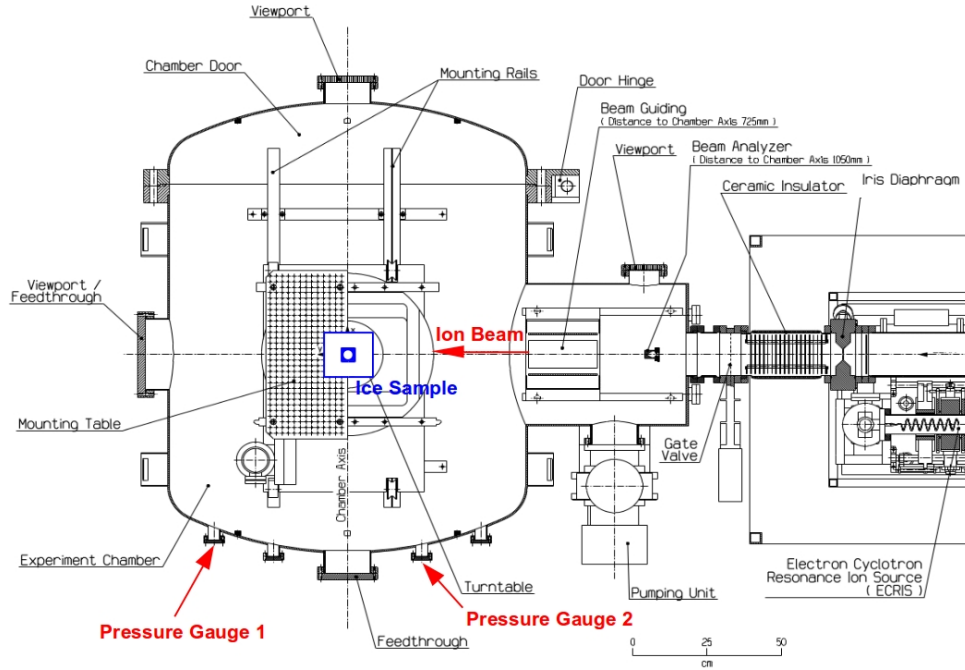


Figure 2: Experiment set-up in the MEFISTO vacuum chamber. The drawing shows the ion source, the vacuum chamber, the ice sample on the cooling plate, and the pressure gauges. We selected an incidence angle of 30° between the ice sample and the ion beam during the present study. In addition, a quadrupole mass spectrometer and an electron gun are mounted in the chamber roof 80 cm above the ice sample.

175 1 s, whereas Pressure Gauge 2 is a less precise baffled cold cathode gauge. Sputtering of the water ice leads to a pressure rise in the vacuum chamber. To detect the small pressure increase due to ion sputtering, only the Stabil-
 Ion pressure gauge was found to be precise enough. The pressure rise due to electron irradiation could be detected by both pressure gauges because the electron flux was orders of magnitude higher than the ion flux.

3. Theory

3.1. Surface charging and discharging

Since water ice is an excellent insulator, irradiation with positively charged ions will cause a positive surface charge in spite of the added NaCl salt. If the

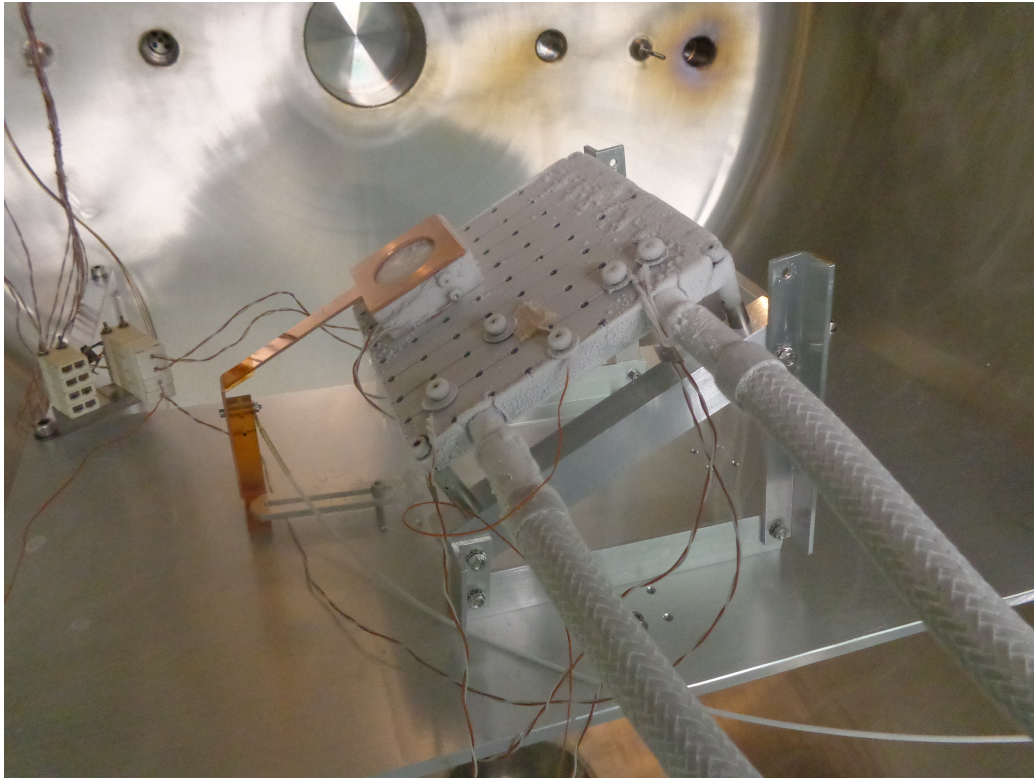


Figure 3: Photograph of the experiment set-up at the beginning of the experiment. The ice has been inserted in the sample holder and the copper ring has been positioned above the ice sample holder so that it covers its rim but not the circular centre with the 0.9 cm deep ice layer.

electric field created by the implanted ions on the ice surface is homogeneous, the ice in the sample holder can be considered a parallel plate capacitor and the charging time t_c calculates to

$$t_c = \frac{U \varepsilon \varepsilon_0 A}{i d} \quad (1)$$

In the above equation, i is the ion current, $\varepsilon_0 = 8.85 \times 10^{-12}$ F m⁻¹ is the vacuum permittivity, ε is the relative permittivity of cold porous ice, $d = 0.009$ m is the thickness of the ice layer, and $A = \pi r^2 = 0.0013$ m² is the ice surface area inside the sample holder. Upon irradiation with ions, the ice surface will charge up to an average surface potential U that will deflect any additional ion onto the copper ring around the ice. If we again use the parallel plate capacitor as a model, this surface potential U is related to the acceleration voltage of the ions U_i via

$$\frac{U}{d} = \frac{\sin(\alpha) \cos(\alpha) U_i}{r} \quad (2)$$

180 with $\alpha = 30^\circ$ the incidence angle between the ion beam and the ice plane. The other unknown in Equation 1 is ε . In this study, we will only consider the real part of ε , since its imaginary part is orders of magnitude lower (Mätzler et al., 2006). Shi et al. (2012) adopted the value of $\varepsilon = 3.0$ from Wang et al. (2008) for compact water ice. A similar value of $\varepsilon = 3.1$ is recommended
 185 by Mätzler et al. (2006) for ordinary water ice (Ih) below $T = 240$ K. The permittivity of water ice hardly varies with temperature for the range of 90 to 140 K considered in our study (Mätzler et al., 2006). The density of our ice samples closely resembles dry snow. We will therefore rely on Sugiyama et al. (2010) who measured $\varepsilon = 1.5$ at microwave frequencies for dry snow with
 190 a density of 300 kg m⁻³. This agrees with the value given by Brouet et al. (2016) for pure porous water ice with 300 kg m⁻³ bulk density. Equations 1 and 2 then yield $t_c \approx 4$ s and a surface potential of $U \approx 2$ kV for an ion beam with $i = 1$ nA and an energy $U_i e^- = 10$ keV.

Shi et al. (2010, 2012) directly measured the surface potential of amor-
 195 phous water ice films with a Kelvin probe. They vapour deposited ice films with hundreds to thousands of nm thickness onto the tip of a microbalance cooled to temperatures between 20 K and 160 K. They found that the surface potential increased asymptotically to an equilibrium during irradiation with an Ar⁺ beam. The timescale to charge the ice surface was hundreds
 200 of seconds. The formulae describing the charging of the ice derived by Shi

et al. (2010, 2012) cannot be directly applied to our experiments because of the different types of samples and the completely different dimensions. In particular, the ice surface potential derived by Shi et al. (2010) contains the distance between the trapped charges, i.e., ionization depth, and the metal substrate underneath the ice. The formula describes well the charging of ice layers whose thickness has the same order of magnitude as the ionization depth (200 nm for 100 keV Ar⁺). In our case, however, this distance would be on the order of 0.9 cm and the asymptotic potential would be much larger than the corresponding energy of the ions. In reality, the surface potential will increase to the fraction of the ion acceleration voltage sufficient to deflect subsequent ions away from the ice onto the surrounding metal surfaces.

When the ion bombardment is stopped, the surface discharges in the most simple case with a decay constant λ_d ,

$$Q(t) = Q_0 \exp(-\lambda_d t) \quad (3)$$

If the ice surface is interpreted again as a parallel plate capacitor (see Eq. 1), the observed time constant for discharging is related to the static conductivity κ of the porous ice via

$$\kappa = \varepsilon \varepsilon_0 \lambda_d \quad (4)$$

Petrenko (1993) performed a meta-study of previous conductivity measurements for ordinary water ice (Ih). The conductivity depends on temperature, $\kappa \sim \exp(-E_a/k_B T)$, with the activation energy E_a ranging from 0 to 0.7 eV. The value is dominated by the chemical impurities (Cl⁻ concentrations for instance) inside the ice; the more pure the ice, the larger E_a and the smaller κ . Because these impurities are hard to quantify and control, the static conductivity of water ice varies by orders of magnitude (10^{-7} to 10^{-10} S m⁻¹ at $T = 263$ K for single crystals) between different studies (Petrenko, 1993). Likewise, Stillman et al. (2013) report $\kappa = 10^{-9}$ to 10^{-10} S m⁻¹ for meteoric ice cores from Antarctica and Greenland for temperatures between 210 and 220 K.

Shi et al. (2012) created amorphous water ice films of 1000 to 3000 monolayers (corresponding to 300 to 900 nm thickness) on a microbalance and verified that the ice did not charge up when the ion penetration depth reached the ice layer thickness, i.e., the energetic ions traversed the ice and hit the gold substrate of the microbalance underneath the ice. For ice films thick enough to charge up, the authors found that the discharging followed an exponential decrease with two different decay constants, representing deep and

230 shallow charges in the ice. The half-life of the shallow charges (~ 400 s) was independent of ice temperature, but the much longer half-life of the deep charges decreased with temperature. Bu and Baragiola (2015) studied the surface potential and proton transport in similar water ice films and found a constant permittivity for the ice between 30 and 95 K. In some cases Shi
 235 et al. (2012) also observed a dielectric breakdown once the surface voltage exceeded hundreds of Volt. We do not expect this phenomenon for our experiments because our ice sample is 10,000 times thicker. Such breakdowns may, however, contribute to the strong signals of frost being detached from metal surfaces (see Section 4.5).

240 3.2. Ion sputtering yield

The experiment set-up (Fig. 2) allows us to assess the sputtering yield from the ion beam hitting the ice surface by monitoring the total pressure in the vacuum chamber. If we assume that a constant particle source q_s in addition to the residual outgassing rate q_r is activated at time t_0 and turned off again at time t_1 we expect the following evolution of the chamber pressure $p(t)$:

$$p(t) = \frac{q_r}{S} + \frac{q_s}{S} \left(1 - \exp\left(-\frac{S}{V}t\right) \right), \text{ for } t_0 < t < t_1 \quad (5)$$

$$p(t) = \frac{q_s}{S} \exp\left(-\frac{S}{V}t\right) + \frac{q_r}{S}, \text{ for } t \geq t_1 \quad (6)$$

with $V = 1.6 \text{ m}^3$ the volume of the chamber and antechamber in Fig. 2, $S = 0.35 \pm 0.1 \text{ m}^3 \text{ s}^{-1}$ the effective pumping speed of the turbomolecular pump, and the temperature of the chamber walls $T = 300 \text{ K}$. Ejected particles that happen to re-impact a cold surface (the cooling plate or the nitrogen-conducting tubes) will be cold trapped and thus not appear in the observed pressure rise. We neglected this effect since the ratio of cooled surfaces to surfaces at 300 K amounts to less than 2%. The time scale established from Eq. 6 is $\tau_{eq} = 1/\lambda \approx 5 \text{ s}$. The new equilibrium pressure reached due to sputtering, $p(t_1) = p(t_0) + \Delta p = q_r/S + q_s/S$, is linked to the sputtering yield Y (ratio of ejected molecules per impacting ions) by the ideal gas law:

$$Y = \frac{\Delta p S e^-}{kT i} \quad (7)$$

The number of impacting ions is easily measured via the ion beam current i and e^- denotes the elementary charge.

To relate our sputtering yields to previous experimental studies we will rely on the semi-empirical formula derived by Famá et al. (2008). It serves as a summary of previous sputtering experiments with compact water ice films. For ion energies below 1 keV, the sputtering yield of ions in water ice can be described by a cascade of elastic collisions, whereas at higher ion energies the so-called electronic sputtering dominates. The total sputtering yield (water molecules per incident ion) is the sum of the two contributions. Famá et al. (2008) derived an expression including both contributions, which fit their laboratory measurements and results of other research groups (Johnson and Liu, 2010) for H^+ , He^+ , N^+ , O^+ , Ne^+ , and Ar^+ beams:

$$Y(E, m_1, Z_1, \theta, T) = \frac{1}{U_0} \left(\frac{3}{4\pi^2 C_0} \alpha S_n + \eta S_e^2 \right) \left(1 + \frac{Y_1}{Y_0} \exp\left(-\frac{E_a}{kT}\right) \right) \cos^{-f}(\theta) \quad (8)$$

Equation 8 quantifies the sputtering yield as a sum of elastic and electronic sputtering, described by the nuclear stopping power $S_n(E, m_1, Z_1)$ and the electronic stopping power $S_e(E, m_1, Z_1)$. The sputtering yield depends on energy E , mass of impactor m_1 , atomic number of impactor Z_1 , the incidence angle θ from the surface normal (60° in our experiment set-up), and temperature T . For the sublimation energy of water, U_0 , Famá et al. (2008) assumed 0.45 eV. The effective cross-section for low energy recoils, $C_0 = 1.3 \text{ \AA}^2$, the activation energy, $E_a = 0.06 \text{ eV}$, and $Y_1/Y_0 = 220$ are constants. The parameter describing the angular dependence calculates to $f = 1.78$ for Ar^+ . From the angular dependence in Eq. 8 one expects an order of magnitude higher sputtering yields at ion incidence angles around 80° than for perpendicular ion impacts. The condition is that the ice sample is microscopically smooth. Küstner et al. (1998) studied graphite surfaces of varying roughness on a μm scale and found that the sputtering yield increased only by a factor of 2.5 when the ion incidence angle increased from 0° to 80° . For a smooth graphite surface, they confirmed that Y increases by more than a decade. In the following section, we will compare our new experiment results for Ar^+ to the predictions in Eq. 8.

4. Results and discussion

We first describe the measured charging and discharging time scales for the ice before proceeding to our first results on the ion and electron sputtering.

Table 1: Measured properties of thick porous ice sample. The columns denote energy of Ar⁺ ions, ion current, ice temperature, ice density, half-life for surface charging, and ion sputtering yield (water molecules per incident ion).

E (keV)	i (nA)	T (K)	ρ (g cm ⁻³)	$t_{c,1/2}$ (s)	Y
3	1.25 ± 0.15	143	0.2	14 ± 2	< 100
10	1.1 ± 0.1	142	0.2	21 ± 4	250 ± 125
3	1.2 ± 0.2	116	0.29	5 ± 1	< 110
10	1.6 ± 0.2	116	0.29	8 ± 1	< 85
30	1.6 ± 0.2	116	0.29	6 ± 1	60^{+85}_{-60}

265 4.1. Surface charging

When the ion beam was directed at the centre of the ice sample, the ion current measured on the copper ring initially dropped to zero. After a few seconds, depending on the temperature of the ice, the ion current increased to reach a stable value of 80% to 90% of the ion current measured when the beam was directed at the copper ring. This indicated that most ions were deflected by the surface potential off their original line of flight onto the copper ring. Figure 4 shows a typical example of this surface charging for a 10 keV Ar⁺ beam with a total current of $i = 1.1 \pm 0.1$ nA directed at ice of $T = 142$ K. The measured charge versus time can be described by an exponential increase

$$i(t) = i_0(1 - \exp(-\lambda_c t)) \quad (9)$$

with the charging time constant λ_c . Table 1 lists the half-life times $t_{c,1/2} = \ln(2)/\lambda_c$ for ions to charge the ice sample for the five combinations of ice temperatures and ion energies studied. The half-life was defined by the time when half of the ion beam current was measured on the copper ring surrounding the ice. The ice sample with higher porosity and temperature
270 took significantly longer to charge up.

The fraction of the ion beam not hitting the ice follows Equation 1 for a plane parallel capacitor charging up. However, the linear increase of charging time with ion energy expected from Equation 2 was not observed in
275 measurements. The asymptotic rise to an equilibrium also agrees with the observations by Shi et al. (2010, 2012) for compact water ice films. The observed charging timescales on the order of 10 seconds are similar to our simple model of a capacitor, in contrast to the 100–1000 s observed for a water ice film (Shi et al., 2010). The results in Table 1 are ambiguous because

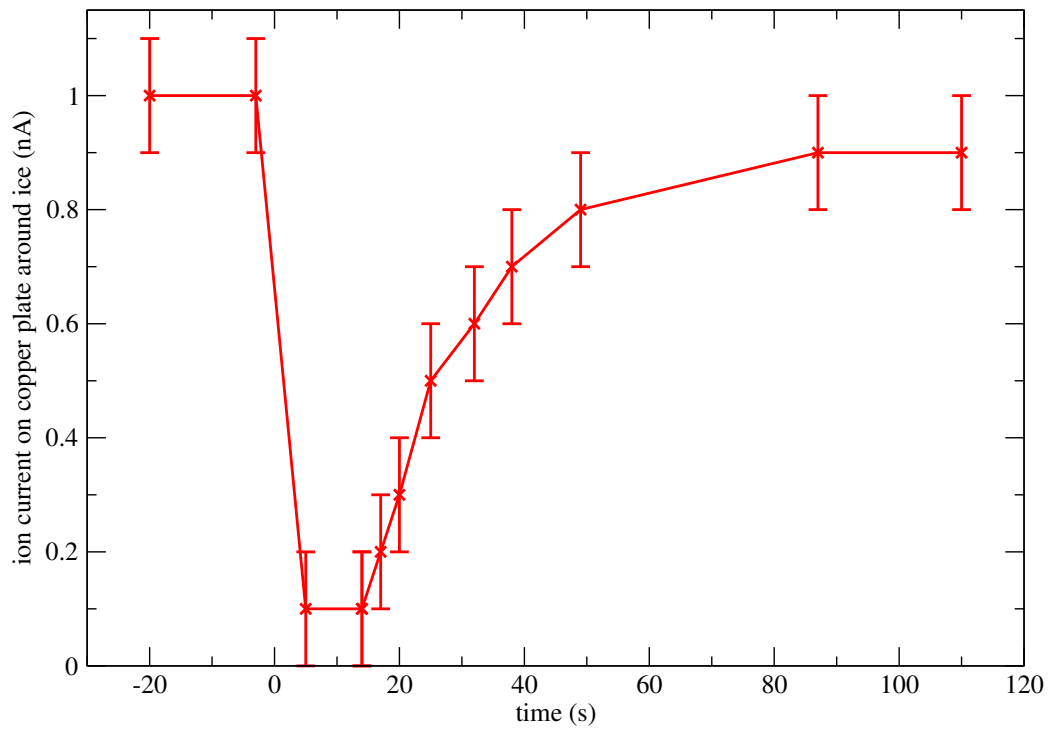


Figure 4: Charging of the ice surface during ion bombardment for the case of 10 keV Ar^+ ions impacting ice of $T = 142$ K. At the time $t = 0$ s, the ion beam is released at the centre of the ice sample. The ion current measured on the copper ring surrounding the ice sample then increases from zero to almost the full current with a half-life for charging of $t_{c,1/2} = 21 \pm 4$ s.

280 the change in timescale could be attributed to the density or the tempera-
ture change. But since the permittivity of dry snow increases with density
(Mätzler et al., 2006), we would expect that more compact ice should take
longer to charge up (Equation 1). We therefore deem it more likely that
the temperature difference between the two ice samples caused the different
285 charging timescale. Such a temperature effect on electric properties of the
ice does not follow from observations of compact water ice (Mätzler et al.,
2006). Since we cannot quantitatively predict this effect, the target area of
the ion beam had to be monitored simultaneously during all ion sputtering
experiments. The signal caused by ion sputtering (see Section 4.4) had to be
290 determined in the first seconds ($t < t_{c,1/2}$) during ion bombardment.

4.2. Discharging of the ice sample

The ice surface must be discharged if we want to perform unbiased ion
sputtering experiments. The electron gun achieved this task, 60 seconds at an
electron energy of 50 or 100 eV proved sufficient to completely discharge the
295 surface. Subjecting the ice surface to a longer time of electron irradiation
did not have an impact on the behaviour of measured ion beam current
versus time in subsequent ion sputtering experiments. We also studied the
natural discharge time of the ice sample without electron irradiation. The
discharging time increased at low temperatures, as found by Shi et al. (2012)
300 for compact water ice films. The decay times observed for thick porous ice
were the same order of magnitude as the short decay component found by
Shi et al. (2012). Our measurements did not allow the distinction of two
separate decay constants as described by Shi et al. (2012).

Since we could not measure the ice potential directly, we had to resort to
305 an indirect measurement. After fully charging the ice surface we waited for 1
to 100 minutes before directing the ion beam again at the ice. If the surface
had been completely discharged in the meanwhile, the new charging time was
identical to the one observed for pristine ice. Otherwise the new charging
time was only a fraction (0.0 to 1.0) of the original charging time. Figure 5
310 illustrates the natural discharge times without simultaneous electron irradiation
(black circles) and the effect of electron irradiation on discharging (red
“x” symbols). In both cases, charging times are plotted against the discharg-
ing times in minutes. The charging times are normalized to 1.0 for pristine
ice. The results of the discharging experiments without electron irradiation
315 are summarized in Table 2. The experiments at cold temperatures (89 K)
were performed without the copper ring around the ice sample, therefore the

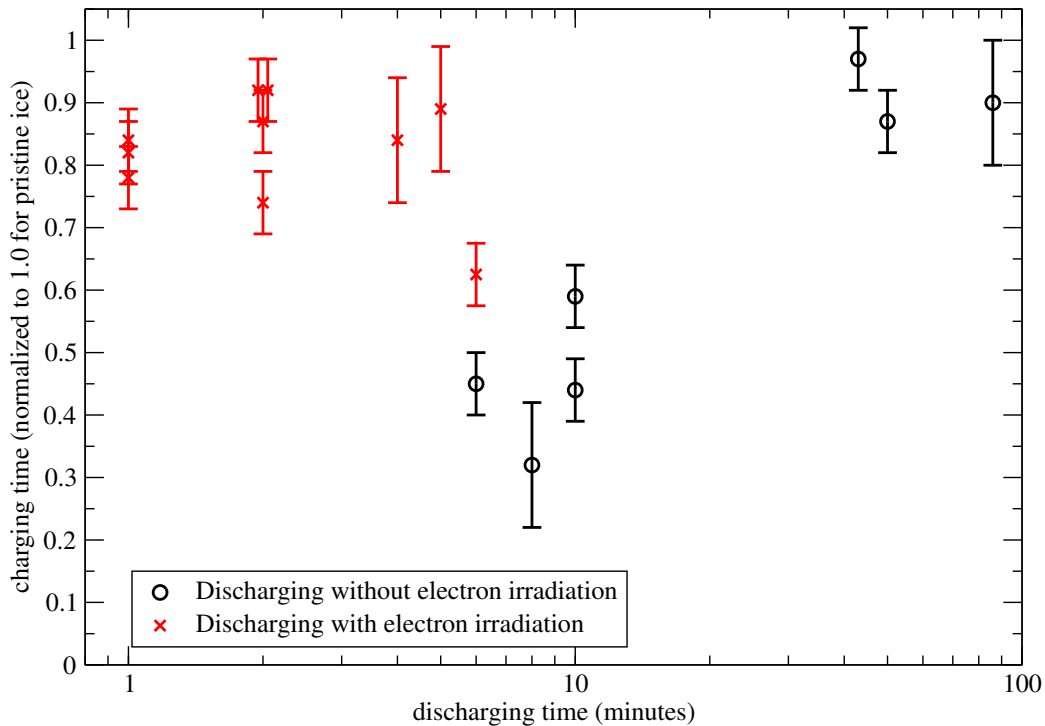


Figure 5: The effect of electron irradiation on surface charging. Red “x” symbols: experiments after electron gun had been running to neutralize ice surface; black circles: electron gun inactive.

surface charging properties could not be measured accurately. This value for the discharging time is only an upper limit.

Our results imply via Equation 4 that the static conductivity of porous water ice decreases from $\kappa = 3 \times 10^{-14} \text{ S m}^{-1}$ at 142 K to $7 \times 10^{-15} \text{ S m}^{-1}$ at 116 K. By comparison, the conductivity of pure deionized water at room temperature is on the order of 10^{-5} S m^{-1} and the mean conductivity of the oceans on Earth is 3.27 S m^{-1} (Kaye & Laby, 2005). If we assume that the conductivity of the porous ice depends on temperature according to $\sim \exp(-E_a/k_B T)$ (Stillman et al., 2013; Petrenko, 1993), this implies an activation energy E_a of 0.08 eV. At temperatures representative for the Galilean moons, the static conductivity of a frost-covered porous ice surface is on the order of $10^{-15} \text{ S m}^{-1}$ or even lower. This means that an icy moon without ionosphere can be considered a non-conducting obstacle to the surrounding

Table 2: Half-life $t_{d,1/2}$ of the ice surface discharging without electron irradiation. Note that the times are given in minutes.

T (K)	ρ (g cm $^{-3}$)	$t_{d,1/2}$ (minutes)
142	0.2	4.6 ± 0.9
116	0.29	23 ± 8
89	0.29	> 60

330 plasma. If such a moon has neither an intrinsic magnetic field nor slows
down the plasma by mass loading (Jia, 2015), it would create a lunar-type
of wake in the plasma (Halekas et al., 2015). Ganymede, however, has a
magnetic field (Kivelson et al., 1997) and Europa, Ganymede, and Callisto
also have ionospheres with $n_e = 10^9$ to 10^{10} m $^{-3}$ peak electron density close
335 to the surface (Kliore et al., 1997; Eviatar et al., 2001; Kliore et al., 2002).
The surface charging observed in laboratory experiments therefore will not
take place on a macroscopic scale on these moons. Any spot exposed to ion
irradiation will also be exposed to electrons and solar UV light. The actual
surface potential will be determined by the balance of incoming and outgoing
340 currents.

4.3. Electron sputtering

The signal caused by electrons sputtering the water frost on the metal
surface was well visible via a pressure rise in the chamber. The height of the
pressure rise depended on the energy and the flux of the electrons. The sig-
345 nal implied $Y = 0.3 \pm 0.15$ water molecules per incident electrons at 100 eV
via Equation 7. The pressure rise observed with the cold cathode gauge at
a lower precision (see Section 2.2) yielded $Y = 0.3 \pm 0.3$. This independ-
ent measurement at another place in the vacuum chamber confirmed the
validity of the pressure rise approach. However, we did not yet quantify the
350 electron sputtering yield as a function of electron energy. We also will have
to narrow the electron beam to compare the sputtering signal from the ice
sample against the signal from the frost on metal surfaces. This comparison
will decide if the electron sputter behaviour depends on ice properties. In
the present study, we used a completely defocused electron beam to ensure
355 surface neutralization. Contrary to ion irradiation, the sputtering caused by
electrons does not choke itself off because of the secondary electrons emit-
ted from the surface. For electron energies between roughly 50 eV and 10

keV the sputtering yield of secondary electrons is larger than 1.0 (Jurac et al., 1995), thus more electrons will leave the ice than impacting the ice and newly arriving electrons will not be deflected off the surface. The (positive) surface potential due to electron irradiation will not exceed a few Volt because secondary electrons have energies around a few eV almost independent of the energy of the impactors (Jurac et al., 1995). This remaining potential is irrelevant for a subsequent sputtering experiment with keV-energy ions. They cause a positive surface potential three orders of magnitude higher (see Section 3.1) than the few Volt due to secondary electrons.

4.4. Ion sputtering

The surface charging must be taken into account for an unbiased ion sputtering experiment. When the ice surface is charged the majority of the ions will not hit the ice sample but rather the metal surfaces and frost around the sample. To measure ion sputtering we directed the ion beam at the ice until the surface potential had reached an equilibrium, discharged the ice during one minute with electrons and repeated the measurement. This way we avoided waiting times of one hour after each experiment (see Table 2).

For the cold ice ($T = 116$ K), the charging timescale was too short and the sputtering yield was too low to observe a rise of the chamber pressure significantly higher than the precision of the pressure gauge for all ion energies. From Equation 7 it follows that $Y < 150$ molecules per ion (see last column in Table 1).

For warmer temperatures ($T = 142$ K) and 10 keV ion energy, we observed a pressure rise in nine consecutive observations. It occurred within the first 3 seconds after the onset of ion sputtering. Figure 6 shows four of these nine measurements as chamber pressure versus time. The black vertical line indicates the moment when the ion beam was directed at the centre of the ice, the red vertical line indicates the time when one charging half-life (21 s) has passed. After that time mark, irregular pressure spikes could occur as long as the ion beam was active. We explain this effect by the ion beam being deflected off the sample and hitting frost deposited on metal surfaces (see Section 4.5 for more details). We could not verify the shape of the pressure rise predicted in Equation 5 because the precision of the pressure gauge of 10^{-10} mbar was close to the pressure rise Δp . But linear regressions to the pressure versus time in the minute before ion sputtering (black dashed lines) and for the first 21 seconds during ion sputtering (red dashed lines) allowed us to estimate the Δp needed in Equation 7.

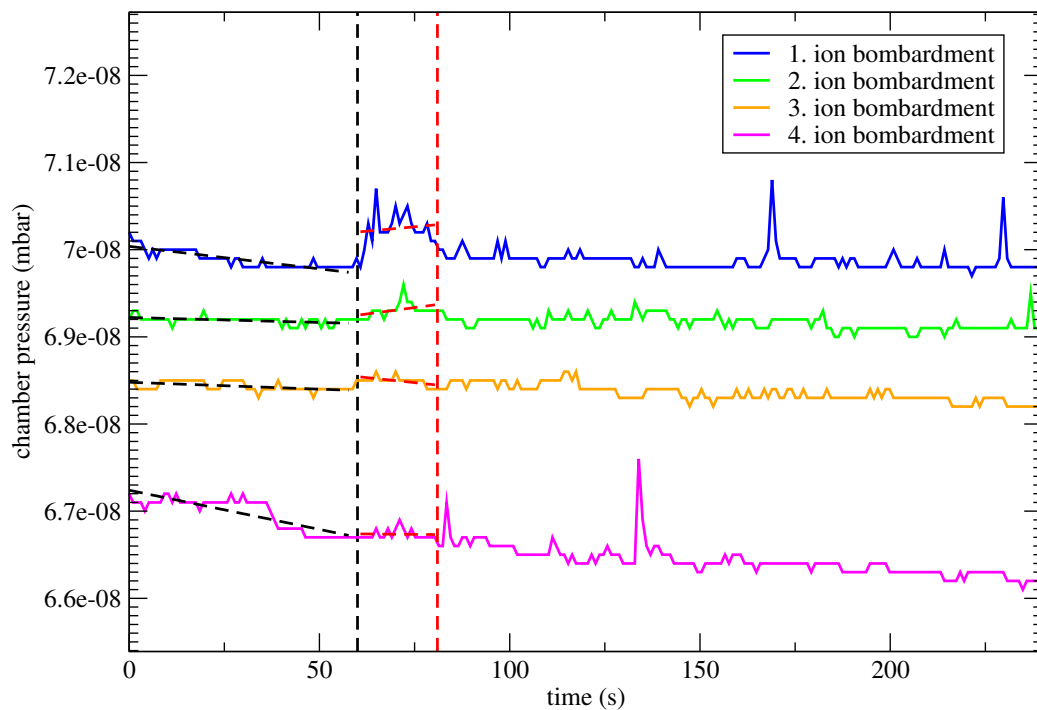


Figure 6: Pressure rise observed due to ion sputtering. Shown are four of nine observations for a 10 keV Ar^+ ion beam directed at the centre of the ice sample at $T = 142$ K. The black vertical line denotes the onset of sputtering, the red vertical line denotes the moment when one half-life of surface charging has passed. The pressure spikes at 130 and 170 s are due to frost being sputtered off the metal surfaces around the sample.

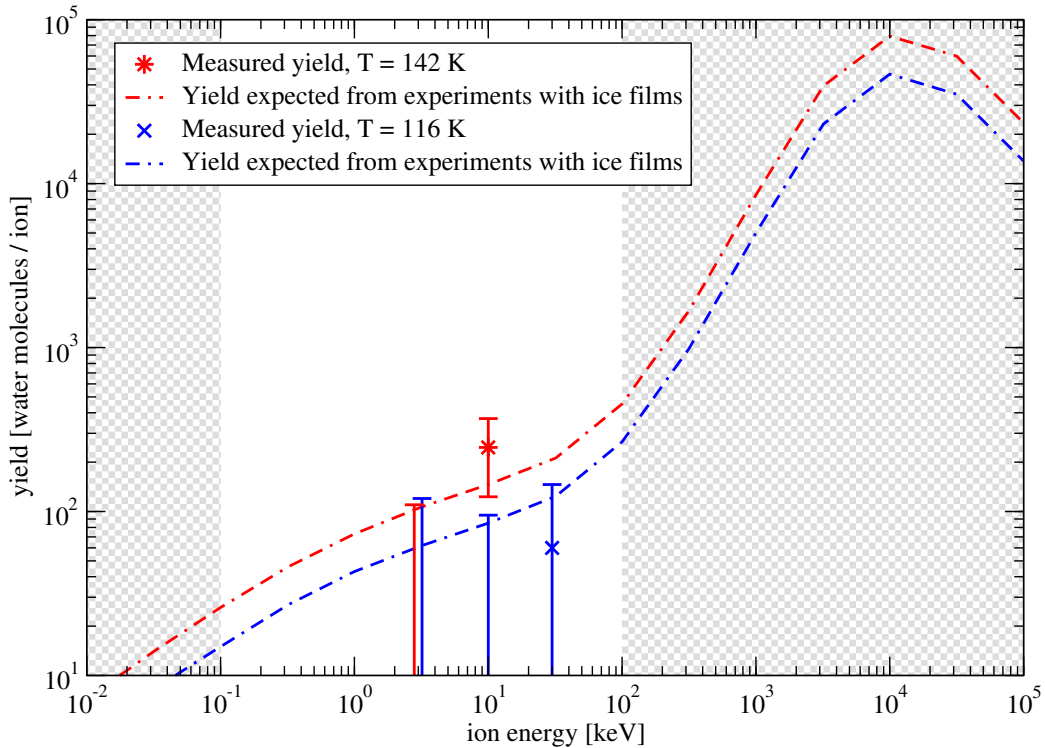


Figure 7: Sputtering yield for Ar^+ ions from porous water ice. The results obtained with our experiment set-up are compared with the semi-empirical formula based on previous laboratory experiments with compact water ice films provided by Famá et al. (2008).

395 From Fig. 6 we obtain an average $\Delta p = (2 \pm 1) \times 10^{-10}$ mbar for all nine measurements. This implies a sputtering yield of $Y = 250 \pm 125$ according to Equation 7. The probability that we mistook random fluctuations in chamber pressure for a signal nine times in a row is $0.5^9 < 0.2\%$. For the lower energy of 3 keV, we only could derive an upper limit of $Y < 100$. In Fig. 7 we plot the observed sputtering yields or their upper limits against the sputtering yields expected from previous ice sputtering experiments performed with water ice films on a microbalance (Equation 8). Our results are consistent with the notion that sputtering from porous regolith ice is similar to sputtering from compact monolayers of amorphous water ice.

405 The basic limitation of the current set-up is that only intense sputtering signals with a yield larger than 100 can be detected due to the limits imposed by the residual pressure in the chamber and the precision of the pressure

measurement. This means we can only identify sputtering yields for ion energies larger than 10 keV at ice temperatures considered here. Higher ice temperatures would result in a higher sputtering yield, but to simulate the icy moons of Jupiter, temperatures between 80 K and 150 K are mandatory (see Section 3). In future experiments we will combine our set-up with a cooled microbalance opposite the ice sample to collect sputtered material and thus to enlarge our measurement range. Addition of a microbalance will also allow us to directly compare our results to previous ice sputtering experiments with thin water ice layers on a microbalance (Shi et al., 1995; Orlando and Sieger, 2003; Johnson et al., 2004; Famá et al., 2008; Cassidy et al., 2010; Shi et al., 2012).

4.5. Sputtering of irregular frost on metal surfaces

We emphasize the importance of studying and monitoring surface charging of ice during any ion sputtering experiment. Figure 6 demonstrated the danger of mis-interpreting strong signals of detached frost as the regular ice sputtering signal. This became more obvious when we directed the ion beam from the beginning at the copper ring or other frost covered metal surfaces. Figure 8 shows the chamber pressure for five of those cases, the ion beam starts hitting the frost covered metal surfaces at the time $t = 0$. The pressure spikes appear within the first few seconds afterwards and may be up to 1000 times stronger than the nominal sputtering signal if the frost on the cooling plate is targeted. The frost signal from the copper ring is much weaker (red line in Fig. 8) but still stronger than the sputtering signal from the ice sample. The pressure fluctuates rapidly, but the spikes tend to become weaker during ion bombardment and if the same experiment is repeated for the same patch of frost on metal. Our interpretation is that entire flakes of frost are detached from the metal surfaces by electrostatic repulsion. The quadrupole mass spectrometer shows that the pressure rise during such incidences is solely due to H_2O molecules. The process sets in too fast and shows too large variations to be attributed to the ion beam warming up the frost. This type of intense frost sputtering does not apply to the surfaces of icy moons because there is no conducting metal surface directly underneath the top frost layer. Given these observations, we consider a thick ice layer crucial for sputtering experiments to electrically decouple the ion charges from the metal surfaces underneath.

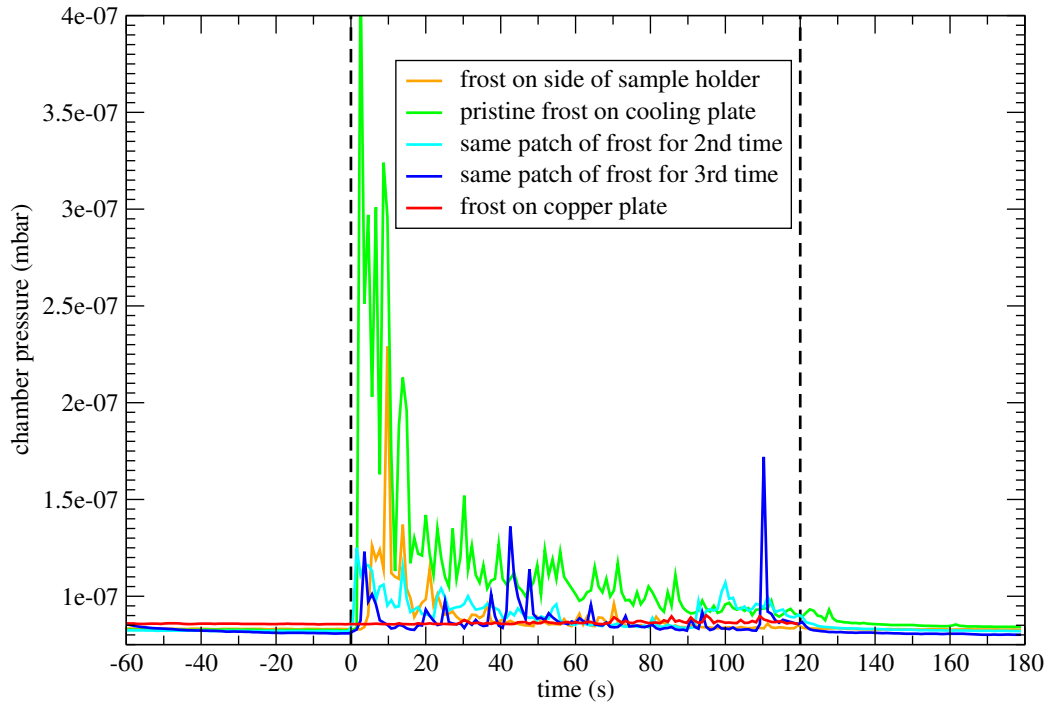


Figure 8: Pressure rise observed due to 10 keV Ar^+ ions hitting thin irregular frost on various metal surfaces. Orange: frost on the outer bottom of the sample holder ($T = 90$ K), green, cyan, and blue: frost on the cooling plate ($T = 101$ K), red: thin frost on the copper ring above the ice sample ($T > 142$ K). The first black vertical line denotes the onset of sputtering, the second line denotes the moment when the ion beam is blocked.

5. Conclusions

We have presented first experimental studies of ion sputtering in thick
445 and porous water ice representative for the surface of icy moons. We have
shown that the surface charging of the ice must be monitored during the
experiment to correctly interpret the observed sputtering yield. The apparent
signal obtained when a thin or irregular frost layer is detached from a metal
surface due to electrostatic repulsion may be orders of magnitude larger than
450 the actual sputtering rate of water ice. Electric conductivity of porous water
ice regolith at temperatures close to 100 K is very low, on the order of 10^{-15}
 S m^{-1} , even if NaCl is present.

Since a thick and porous ice layer cannot be attached to the tip of a
microbalance we resorted in these first experiments to monitoring the rise and
455 fall of the chamber pressure during sputtering experiments. This pressure rise
method leads to sputtering yields similar to previous laboratory experiments
performed with thin water ice films sputtered off a microbalance. Our results
are thus consistent with the notion that sputtering from porous regolith ice
is similar to compact monolayers of water ice. But more experiments at
460 various energies, incidence angles, and different ion species are required to
make a stronger statement. The residual pressure in the chamber and the
measurement precision prevent us from measuring sputter yields less than
100. As a result, we only obtain upper limits for the sputtering yield at
energies below 10 keV.

Our experiments have, with the limitations stated above, three main im-
465 plications for surface and exosphere models of the Galilean moons. So far,
the sputtering yields implemented in exosphere models need not be changed.
However, plasma models must take into account that the electric conductiv-
ity of the surface is very low. As a consequence, electron irradiation may
470 have to be included explicitly in exosphere models.

References

- Andreas, E.L., 2007. New estimates for the sublimation rate for ice on the
Moon. *Icarus* 186, 24–30.
- Barth, C.A., Hord, C.W., Stewart, A.I.F., Pryor, W.R., Simmons, K.E.,
475 McClintock, W.E., Ajello, J.M., Naviaux, K.L., and Aiello, J.J., 1997.
Galileo ultraviolet spectrometer observations of atomic hydrogen in the
atmosphere of Ganymede. *Geophysical Research Letters*, 24, 2147.

- Brocard, E. 2008. Ground-based remote sensing of the troposphere in the thermal infrared. PhD thesis, Philosophisch-Naturwissenschaftliche Fakultät, University of Bern, Bern, Switzerland.
- 480
- Brouet, Y. et al. 2016. Measurements of permittivity of porous water ice. *Submitted to Journal of Geophysical Research*.
- Brown, M.E., Hill, R.E., 1996. Discovery of an extended sodium atmosphere around Europa. *Nature* 380, 229.
- 485
- Brown, M.E., 2001. Potassium in Europas atmosphere. *Icarus* 151, 190.
- Bu, C., Baragiola, R.A. Proton transport in ice at 30–140 K: Effects of porosity. *The Journal of Chemical Physics* 143, 074702.
- Calvin, W.M., Clark, R.N., Brown, R.H., Spencer, J.R., 1995. Spectra of the icy Galilean satellites from 0.2 to 5 μm : A compilation, new observations, and a recent summary. *Journal of Geophysical Research*, 100, 19041–19048.
- 490
- Carlson, R.W., 1999. A Tenuous Carbon Dioxide Atmosphere on Jupiter’s Moon Callisto. *Science*, 283, 820.
- Cassidy, T.A., Johnson R.E., 2005. Monte Carlo model of sputtering and other ejection processes within a regolith. *Icarus* 176, 499–507.
- 495
- Cassidy, T., Coll, P., Raulin, F., Carlson, R.W., Johnson, R.E., Loeffler, M.J., Hand, K.P., Baragiola, R.A., 2010. Radiolysis and Photolysis of Icy Satellite Surfaces: Experiments and Theory. *Space Science Reviews*. doi:10.1007/s11214-009-9625-3.
- Cassidy, T.A., Paranicas, C.P., Shirley, J.H., DaltonIII, J.B., Teolis, B.D., Johnson, R.E., Kamp, L., Hendrix, A.R., 2013. Magnetospheric ion sputtering and water ice grain size at Europa. *Planetary and Space Science* 77, 64–73.
- 500
- Domingue, D.L., Verbiscer, A., 1997. Re-analysis of the solar phase curves of the icy Galilean satellites. *Icarus* 128, 49–74.
- 505
- ESA, 2014. JUPiter ICy moons Explorer – Exploring the emergence of habitable worlds around gas giants – Definition Study Report. ESA/SRE(2014)1, September 2014, <http://sci.esa.int/juice/54994-juice-definition-study-report>.

- 510 Eviatar, A., Vasyliunas, V.M., Gurnett, D.A., 2001. The ionosphere of Ganymede. *Planetary and Space Science* 49, 327–336.
- Famá, M., Shi, J., Baragiola, R.A., 2008. Sputtering of ice by low-energy ions. *Surface Science* 602, 156.
- Galli, A., Pommerol, A., Wurz, P., Jost, B., Scheer, J.A., Vorburger, A., Tulej, M., Thomas, N., Wieser, M., Barabash, S., 2015, Realistic ice sputtering experiments for the surfaces of Galilean moons, EPSC Abstracts, 515 10, EPSC2015-771-1.
- Grundy, W.M., Buie, M.W., Stansberry, J.A., Spencer, J.R., 1999. Near-Infrared Spectra of Icy Outer Solar System Surfaces: Remote Determination of H₂O Ice Temperatures. *Icarus* 142, 536–549.
- 520 Halekas, J.S., Brain, D.A., Holmström, M. 2015. Moon’s Plasma Wake. In: Keiling, A., Jackman, C.A., Delamere P.A. (Eds.), *Magnetotails in the Solar System*. Geophysical Monograph 207, American Geophysical Union and John Wiley & Sons, Inc., Washington D.C., USA.
- Hall, D.T., Strobel, D.F., Feldman, P.D., McGrath, M.A., Weaver, H.A., 525 1995. Detection of an oxygen atmosphere on Jupiter’s moon Europa. *Nature* 373, 677.
- Hall, D.T., Feldman, P.D., McGrath, M.A., Strobel, D.F., 1998. The Far-Ultraviolet Oxygen Airglow of Europa and Ganymede. *The Astrophysical Journal* 499, 475.
- 530 Hansen, C.J., Shemansky, D.E., Hendrix, A.R., 2005. Cassini UVIS observations of Europas oxygen atmosphere and torus. *Icarus* 176, 305.
- Hohl, M., 2002. MEFISTO II: design, setup, characterization and operation of an improved calibration facility for solar plasma instrumentation. PhD Thesis, University of Bern.
- 535 Hohl, M., Wurz, P., Bochsler, P., 2005. Investigation of the density and temperature of electrons in a compact 2.45 GHz electron cyclotron resonance ion source plasma by x-ray measurements. *Plasma Sources Science and Technology* 14, 692–699. doi:10.1088/0963-0252/14/4/008.

- Jia, X. 2015. Satellite Magnetotails. In: Keiling, A., Jackman, C.A., De-
lamere P.A. (Eds.), Magnetotails in the Solar System. Geophysical Mono-
graph 207, American Geophysical Union and John Wiley & Sons, Inc.,
540 Washington D.C., USA.
- Johnson, R.E., 1989. Application of Laboratory Data to the Sputtering of a
Planetary Regolith. *Icarus* 78, 206–210.
- 545 Johnson, R.E., Carlson, R.W., Cooper, J.F., Paranicas, C., Moore, M.H.,
Wong, M.C., 2004. Radiation effects on the surfaces of the Galilean satel-
lites. In: Bagenal, F. (Ed.), *Jupiter: Atmosphere, Satellites and Magneto-
sphere*. University of Arizona Press, Tucson, USA.
- Johnson, R.E. and Liu, M., 2010. Sputtering of Surfaces, Sputtering Data
550 for H₂O ice, <http://people.virginia.edu/~rej/h2o.html>
- Jost, B., Pommerol, A., Poch, O., Gundlach, B., Leboeuf, M., Dadras, M.,
Blum, J., Thomas, N., 2016. Experimental characterization of the oppo-
sition surge in fine-grained water-ice and high albedo analogs, *Icarus* 264,
109–131.
- 555 Jurac, S., Baragiola, R.A., Johnson, R.E., and Sittler Jr., E.C., 1995. Charg-
ing of ice grains by low-energy plasmas: Application to Saturn’s *E* ring.
Journal of Geophysical Research 100, A8, 14821–14831.
- Kaye & Laby Online, 2005. Tables of Physical & Chemical Constants (16th
edition 1995). 2.1.4 Hygrometry, Version 1.0, www.kayelaby.npl.co.uk.
- 560 Kivelson, M.G., Khurana, K.K., Coronoti, F.V., Joy, S., Russell, C.T.,
Walker, R.J., Warnecke, J., Bennett, L., Polanskey, C., 1997. The mag-
netic field and magnetosphere of Ganymede. *Geophysical Research Letters*
24, 2155–2158.
- Kliore, A.J., Hinson, D.P., Flasar, F.M., Nagy, A.F., Cravens, T.E., 1997.
565 The Ionosphere of Europa from Galileo Radio Occultations. *Science* 277,
355.
- Kliore, A.J., Anabtawi, A., Herrera, R.G., Asmar, S.W., Nagy, A.F., Hin-
son, D.P., Flasar, F.M., 2002. Ionosphere of Callisto from Galileo radio
occultation observations. *Journal of Geophysical Research* 107, 1407.

- 570 Küstner, M., Eckstein, W., Dose, V., Roth, J, 1998. The influence of surface roughness on the angular dependence of the sputter yield. *Nucl. Instrum. Methods B* 145, 320–331.
- Marconi, M.L., 2007. A kinetic model of Ganymede’s atmosphere. *Icarus* 190, 155.
- 575 Marti, A., Schletti, R., Wurz, P., Bochsler, P., 2001. Calibration facility for solar wind plasma instrumentation. *Review of Scientific Instruments* 72, 1354. doi:10.1063/1.1340020.
- Mätzler, C., Ellison, W., Thomas, B., Sihvola, A., Schwank, M., 2006. Dielectric properties of natural media. In: Mätzler, C. (Ed.), *Thermal Microwave Radiation: Applications for Remote Sensing*. The Institution of Engineering and Technology, London, UK.
- 580 Noll, K.S., Johnson, R.E., Lane, A.L., Domingue, D.L., Weaver, H.A., 1996. Detection of Ozone on Ganymede. *Science*, 273, 341.
- Orlando, T.M., Sieger, M.T., 2003. The role of electron-stimulated production of O₂ from water ice in the radiation processing of outer solar system surfaces. *Surface Sciences* 528, 1.
- 585 Petrenko, V.F., 1993. *Electrical Properties of Ice*. Thayer School of Engineering, Dartmouth College, Hanover, NH, USA.
- Plainaki, C., Milillo, A., Mura, A., Orsini, S., Massetti, S., Cassidy, T., 2012. The role of sputtering and radiolysis in the generation of Europa exosphere. *Icarus* 218, 956.
- 590 Rodriguez, N.J., Rathbun, J.A., Spencer, J.R., 2009. Europa’s thermal surface from Galileo PPR. 40th Lunar and Planetary Science Conference, Abstract, 2166.
- Rodriguez-Nieva, J.F., Bringa, E.M., Cassidy, T.A., Johnson, R.E., Caro, A., Famá, M., Loeffler, M.J., Baragiola, R.A., Farkas, D., 2011. Sputtering from a porous material by penetrating ions. *The Astrophysical Journal Letters* 743, L5. doi:10.1088/2041-8205/743/1/L5.
- 595

- Shi, M., Baragiola, R.A., Grosjean, D.E., Johnson, R.E., Jurac, S., Schou,
600 J., 1995. Sputtering of water ice surfaces and the production of extended
neutral atmospheres. *Journal of Geophysical Research* 100, 26387.
- Shi, J., Famá, M., Teolis, B.D., Baragiola, R.A., 2010. Ion-induced electro-
static charging of ice. *Nucl. Instrum. Methods B* 268, 2888–2891.
- Shi, J., Famá, M., Teolis, B.D., Baragiola, R.A., 2012. Ion-induced electro-
605 static charging of ice at 15–160 K. *Physical Review B* 85, 035424.
- Shirley, J.H., Dalton III, J.B., Prockter, L.M., Kamp, L.W., 2010. Europa’s
ridged plains and smooth low albedo plains: Distinctive compositions and
compositional gradients at the leading sidetrailing side boundary. *Icarus*,
210, 358–384.
- 610 Spencer, J.R., Calvin, W.M., Person, M.J., 1995. Charge-coupled device
spectra of the Galilean satellites: Molecular oxygen on Ganymede. *Journal
of Geophysical Research* 100, 19049.
- Stillman, D.E., MacGregor, J.A., Grimm, R.E., 2013. The role of acids in
electrical conduction through ice. *Journal of Geophysical Research* 118,
615 1–16.
- Sugiyama, S., Enomoto, H., Fujita, S., Fukui, K., Nakazawa, F., Holmlund,
P., 2010. Dielectric permittivity of snow measured along the route tra-
versed in the Japanese-Swedish Antarctic Expedition 2007/08. *Annals of
Glaciology* 51, 55.
- 620 Wang, H.F., Bell, R.C., Iedema, M.J., Schenter, G.K., Wu, K., and Cowin,
J.P., 2008. Pyroelectricity of water ice. *Journal of Physical Chemistry B*,
112, 6379–6389.
- Wieser, M., Futaana, Y., Barabash, S., Wurz, P., 2016. Emission of energetic
neutral atoms from ice under Ganymede surface like conditions. *Icarus* 269,
625 91–97.