

Spinetti T et al.

Figure S1: TLR7 stimulation decreases MDSC in 4T1 tumor-bearing mice.

Flow cytometry analysis of MDSC subpopulations in tumor and spleen from 4T1 tumor-bearing mice injected with two cycles of two injections of 25 µg R848 at a 24-h interval (5 days between the two cycles). Mice were sacrificed 18h after the last injection. Dot plots from one representative mouse per group and means of 3 mice/group are shown. Error bars show SEM.

* $p < 0.05$. Student's t-test.

Figure S2: TLR7 stimulation prevents growth of CT26 tumors.

CT26 tumor-bearing mice were treated repeatedly with two injections of 25 µg R848 or with PBS (black arrows). Mean ± SEM of tumor area measured for individual mice (n=5) are shown. Data are representative of 3 independent experiments. **p<0.01, ****p<0.0001. ANOVA with Bonferroni's post-test.

Fig.S1

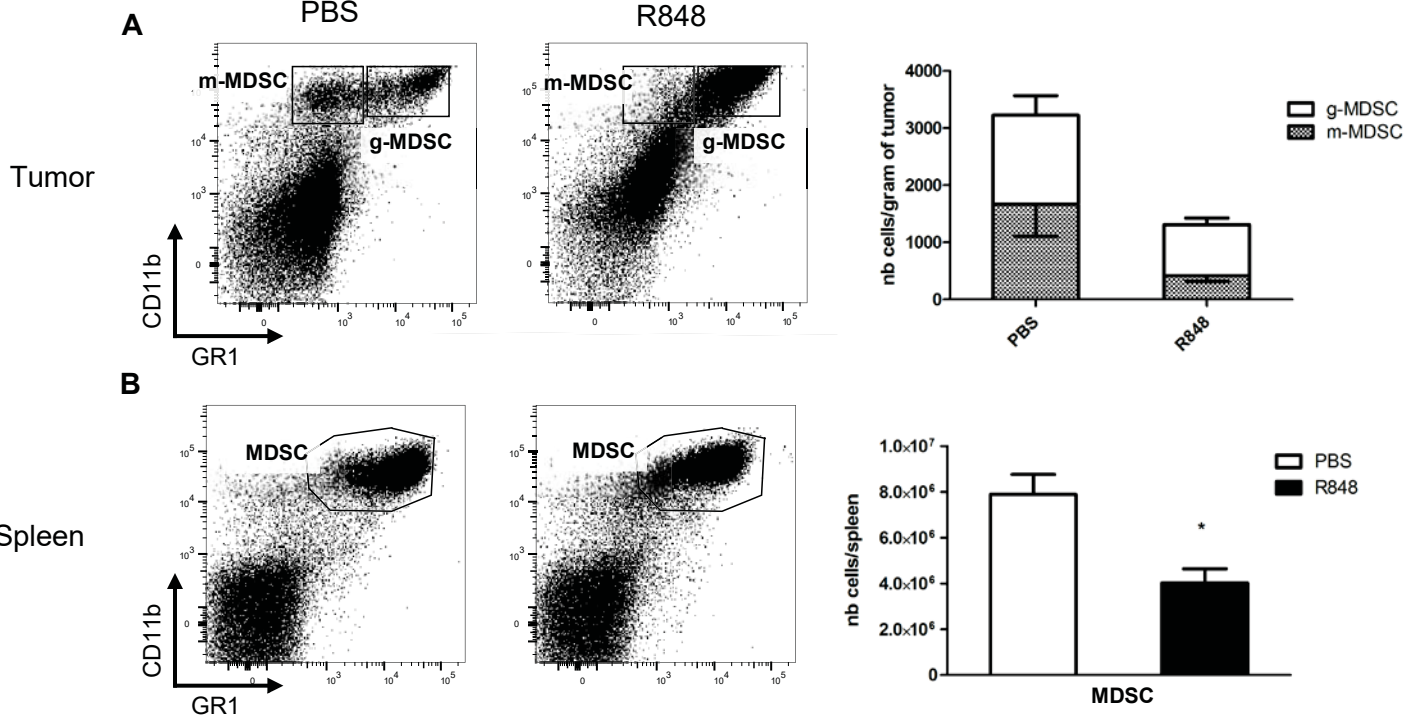


Fig.S2

