



Science Arts & Métiers (SAM)

is an open access repository that collects the work of Arts et Métiers Institute of Technology researchers and makes it freely available over the web where possible.

This is an author-deposited version published in: <https://sam.ensam.eu>
Handle ID: <http://hdl.handle.net/10985/10934>

To cite this version :

Hazem MUBARAK, Laurent BARRALLIER, Sébastien JEGOU, Polina VOLOVITCH, Kévin OGLE
- Effect of stress on passivation kinetics and passivation modelling of 304L stainless steel in acidic medium - 2015

Any correspondence concerning this service should be sent to the repository

Administrator : archiveouverte@ensam.eu



Effect of applied stress on passivation kinetics and passivation modelling of 304L stainless steel in acidic medium

Hazem Mubarak, Laurent Barrallier*, Sébastien Jegou*, Polina Volovitch**, Kevin Ogle**

hazem.mubarak@ensam.eu, laurent.barrallier@ensam.eu, Sebastien.Jegou@ensam.eu, polina-volovitch@chimie-paristech.fr, kevin-ogle@chimie-paristech.fr

1 Passivation Role in Stress Corrosion Cracking (SCC):

- **Film rupture-dissolution model (FRM):** describes intergranular SCC, shown in Fig.1, as repetitive cycles of local surface activation, dissolution, and passivation near the crack tip [1]. Fig. 2 illustrates one of these cycles as described next:

Mechanical

Slip-induced passivity breakdown causing fresh surface exposure to corrosive environment. (process 1-2 in Fig.2 and 3)

Electrochemical

Excessive material dissolution takes place until the surface re-passivates again. (process 3-4 in fig. 2 and 3)

Objectives

- To develop a model quantifying the passivation kinetics and parameters of passive films constructed in acidic medium.
- To use this model to check the influence of stress on stainless steel passivation and passive film quality.

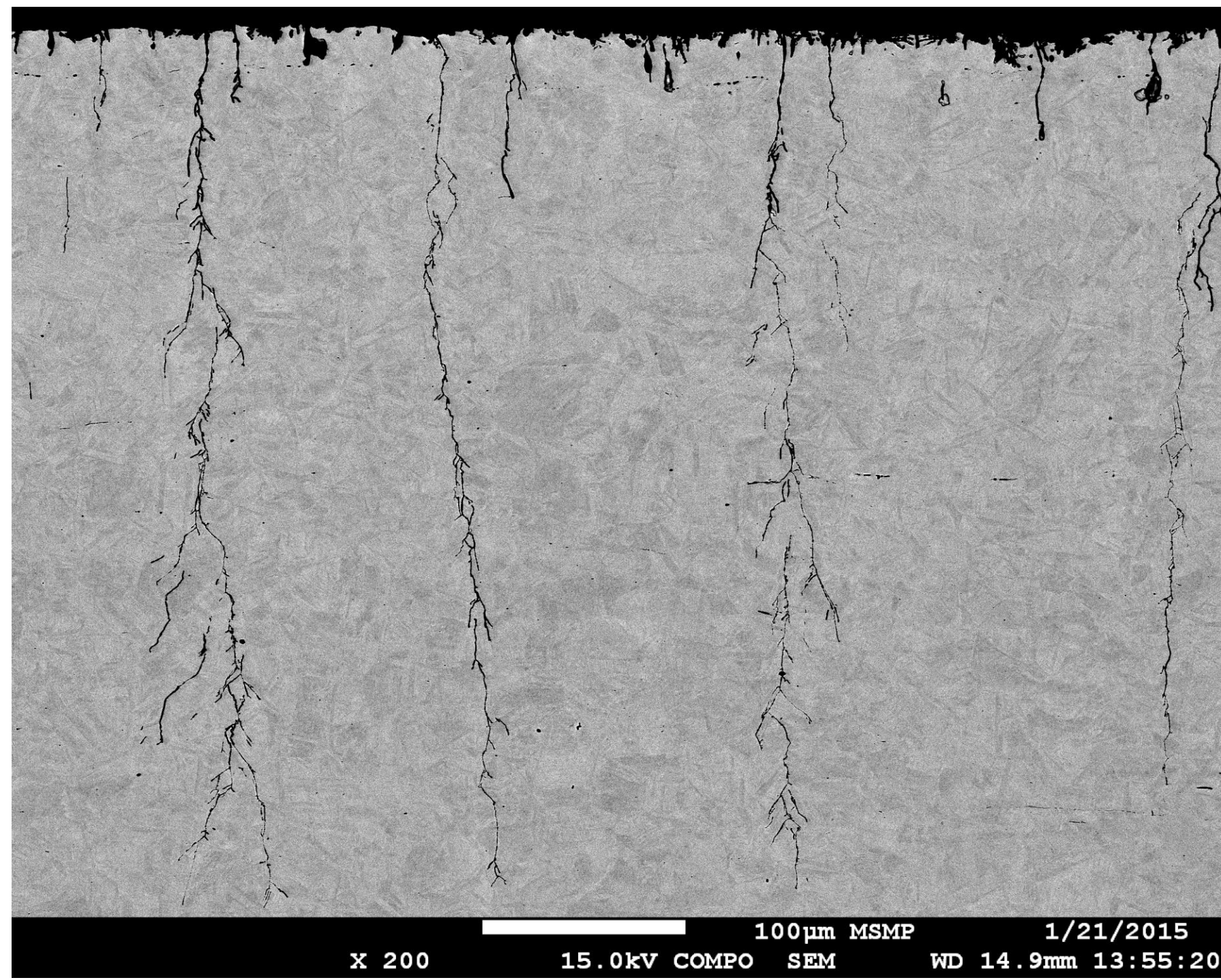


Fig.1: SCC of 304L stainless steel after 88 h immersion in 2 M H2SO4 + 0.5 M NaCl.

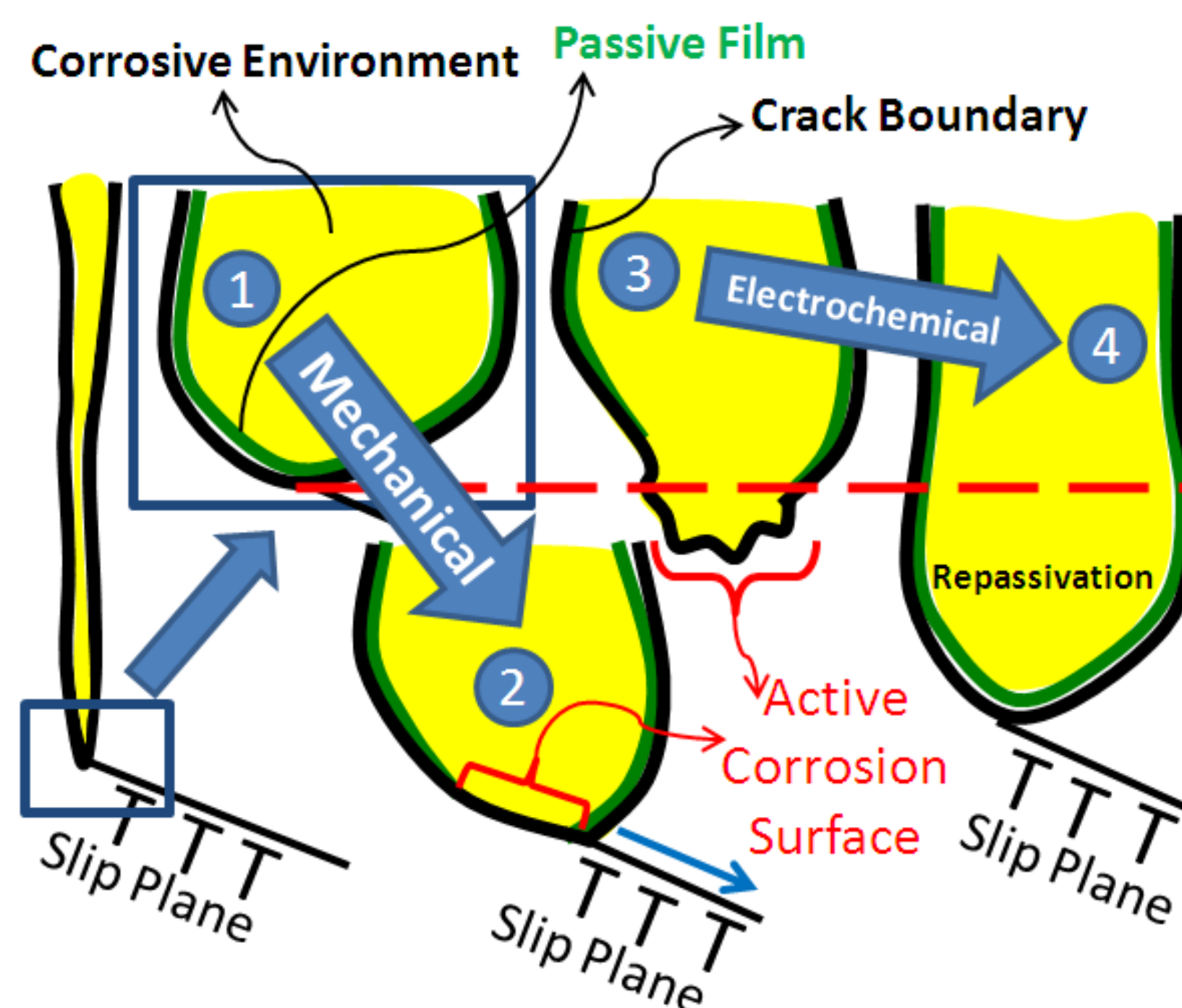


Fig.2: Representation of crack propagation by the film rupture-dissolution model.

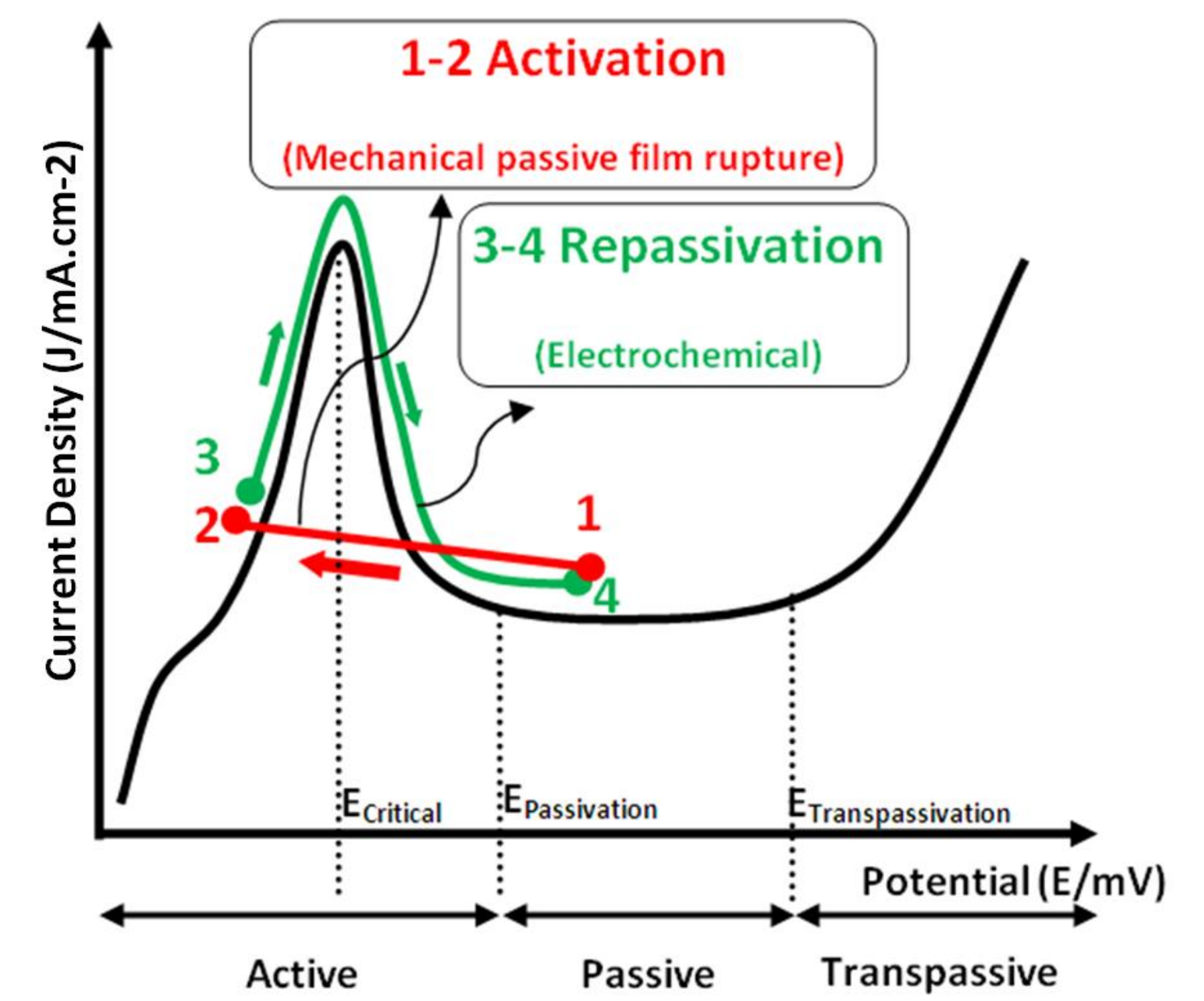


Fig.3: Polarization curve showing an activation/passivation cycle.

2 Quantification of Passive Film Thickness and Quality in Acidic Medium:

Atomic Emission Spectroscopy and Conventional Electrochemical Experiments

- Stressed and non-stressed samples of 304L stainless steel are subjected to potentiodynamic cycling tests as shown in Fig. 2. → These serve as an electrochemical simulation of SCC activation/passivation cycle as described by FRM.
- Experiments were performed in 2 M H2SO4 solution at room temperature.
- In-situ atomic emission spectroelectrochemistry (AESEC) [3] was coupled with conventional electrochemistry during the tests. → By this, the passivation current due to metallic dissolution can be quantified, as shown by Fig. 4.

High Field Ion Conduction Model and Passive Film Thickness (HFIC)

- HFIC was adapted to describe the current evolution during passivation [2], as given by eq.1.
- Passive film thickness can be calculated using Faraday's law as indicated by eq.2.
- The term q_{film} represents the charge exchange responsible for passive film formation.
- The external current during passivation is due to three components as explained by eq.3.
- In acidic solutions, the major part of anodic current measured during passivation is due to metallic dissolution [2,3], where $i_{cathodic}$ is negligible [3].
- The portion of charge due to film formation can be calculated by quantifying the dissolution component as given by equation 5 and 6.
- A particular approximation is taken as $i_{external} = i_{dissolution}$ to calculate the current fraction due to iron dissolution f_{Fe} . By this, f_{Fe} can be calculated as given by eq.7.
- The calculation of f_{Fe} is based only on the metallic mass fractions in the alloy and their oxidation numbers in such acidic medium as derived from Faraday's second law → eq.8.
- Using AESEC quantified data for metallic dissolution during passivation (region C in Fig.4), i_m/i_{Fe} can be calculated. This ratio can be used in eq.9 to calculate f_m for the concerned metals. → By eq.2, passive film thickness is calculated as shown in Fig.5.

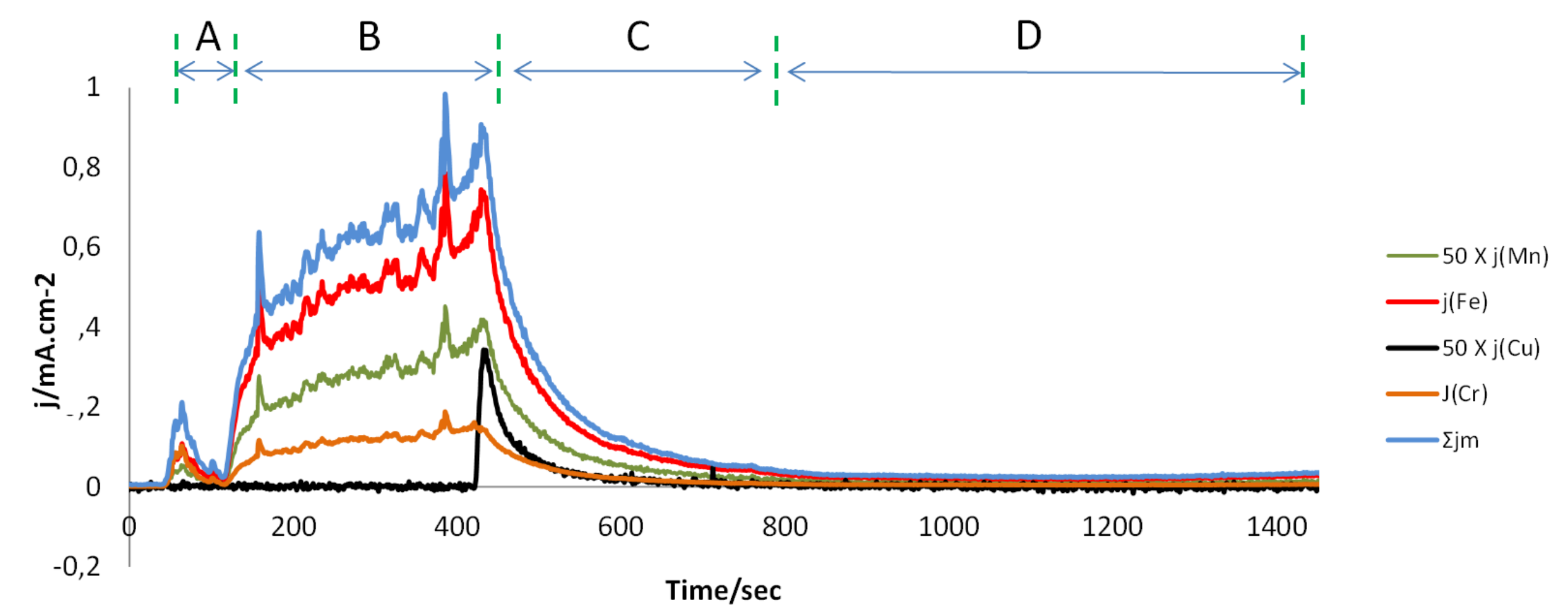


Fig.4: AESEC experiment showing the metallic dissolution current densities during a potentiodynamic activation/passivation cycle. A: activation pulse. B: Open circuit potential (OCP). C: Passivation pulse. D: OCP.

$$i(t) = A \exp\left(\frac{BV}{h(t)}\right) \quad (1)$$

$$h(t) = \frac{Mq(t)_{film}}{zF\rho} \quad (2)$$

$$i_{external} = i_{dissolution} + i_{film} + i_{cathodic} \quad (3)$$

$$q(t)_{total} = \int_{t=0}^t i_{external}(u) du \quad (4)$$

$$q(t)_{film} = q(t)_{total} * (1 - f_{dissolution}) \quad (5)$$

$$f_{dissolution} = (f_{Fe} + f_{Cr} + f_{Mn} + f_{Cu})_{dissolved} \quad (6)$$

$$f_{Fe} = \frac{i_{Fe}}{i_{Fe} + i_{Cr} + i_{Mn} + i_{Cu}} \quad (7)$$

$$i_m = \frac{m.F.Z}{t.M} \quad (8)$$

$$f_m = \frac{i_m}{i_{Fe}} \times f_{Fe} \quad (9)$$

$$\log i(t) = \log A + \frac{BzF\rho V}{2.3 M q(t)_{film}} \quad (10)$$

3 Influence of Stress on Passive Film Thickness and Quality:

- For stressed samples → slightly higher charge exchange → thicker passive film. (1.64 vs 1.58 nm ± 0.03).
- Slopes of curves in Fig. 6 = cBV. → a direct measure of the passivation rate and the film ionic conductivity. → cBV is inversely proportional to the film quality [4]. Fig. 7 shows this factor for stressed and unstressed cases.

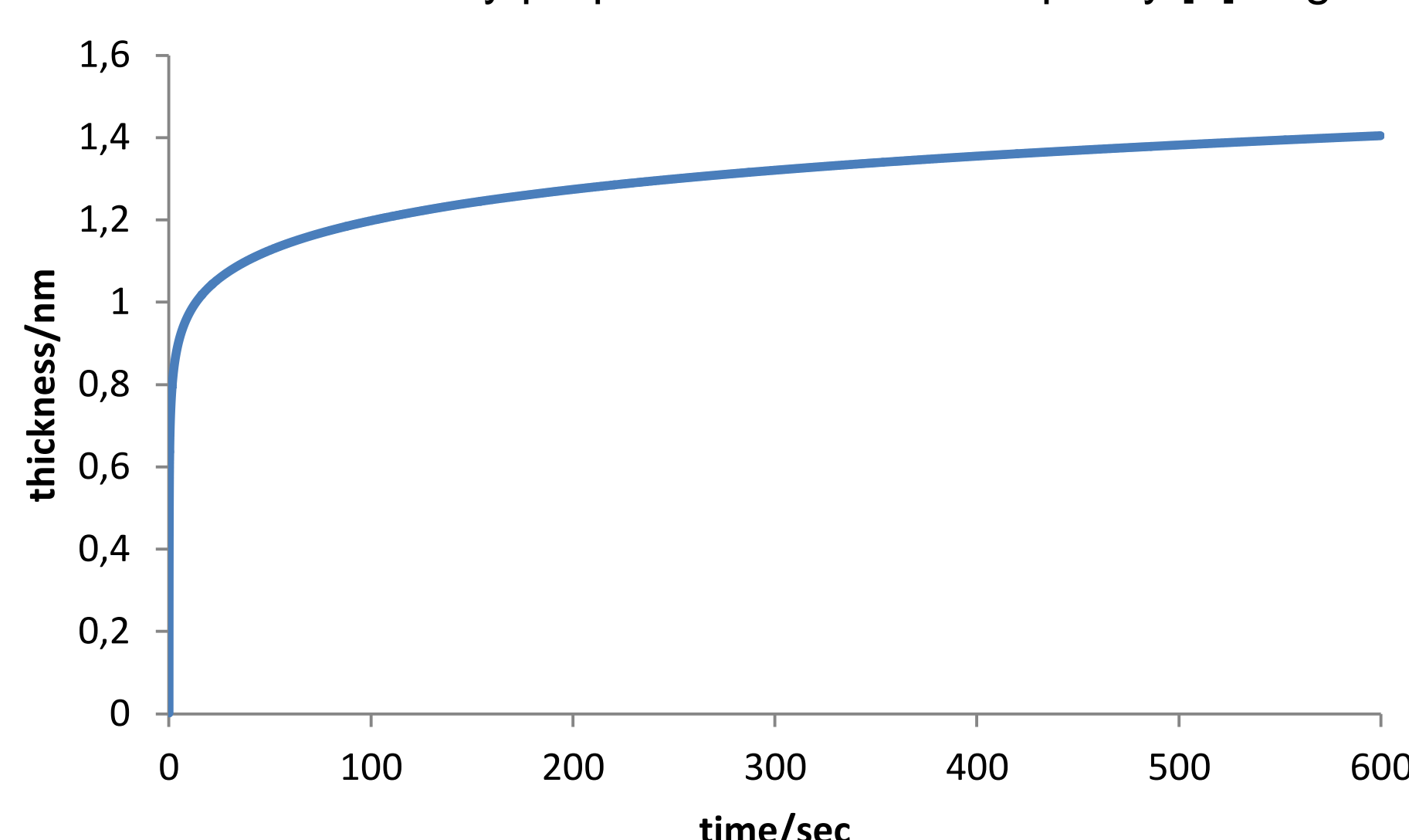


Fig.5: Passive film thickness formed during the passivation as calculated by eq.2.

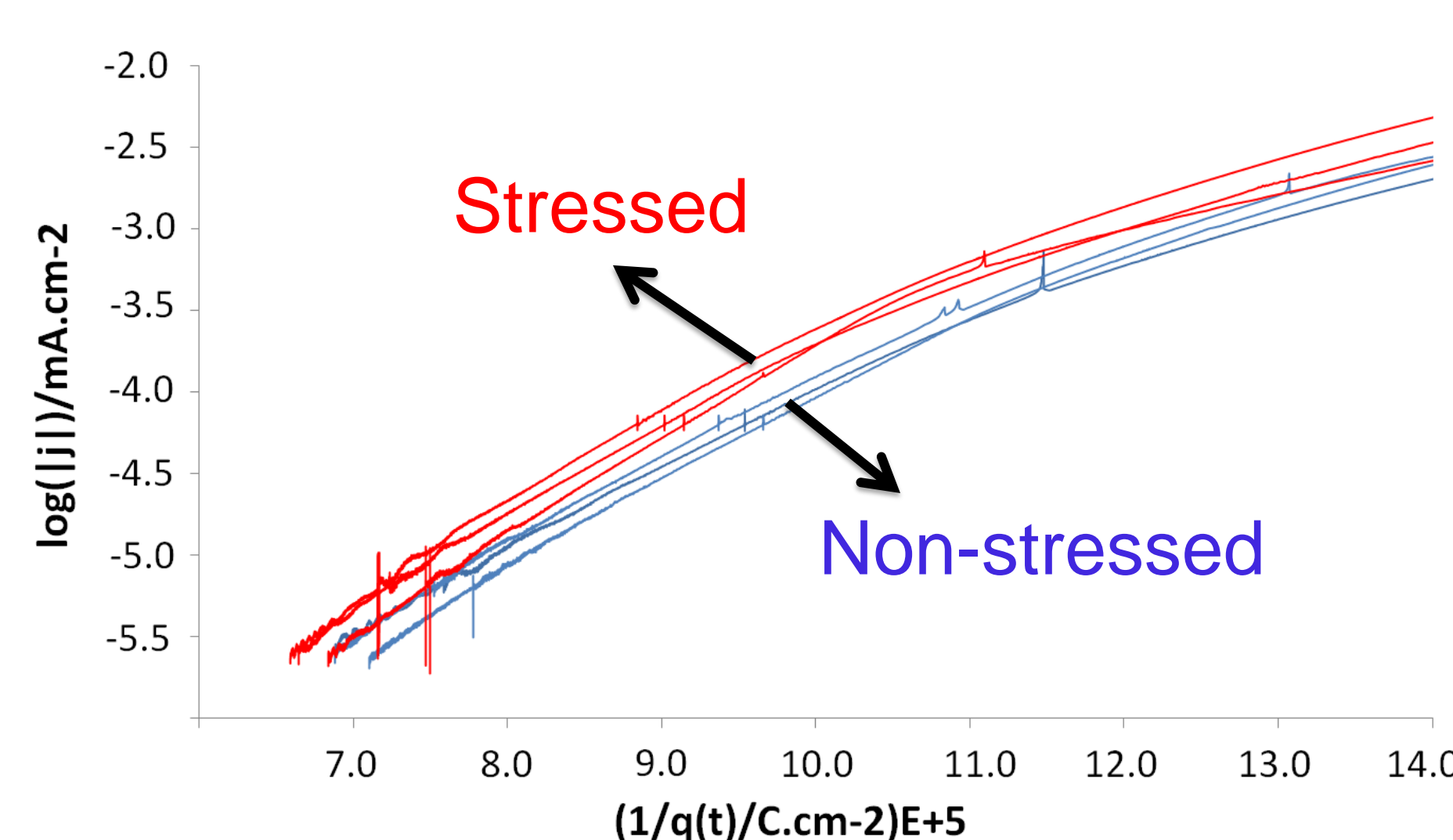


Fig.6: Experimental passivation transients based on eq.10 during the anodic pulse.

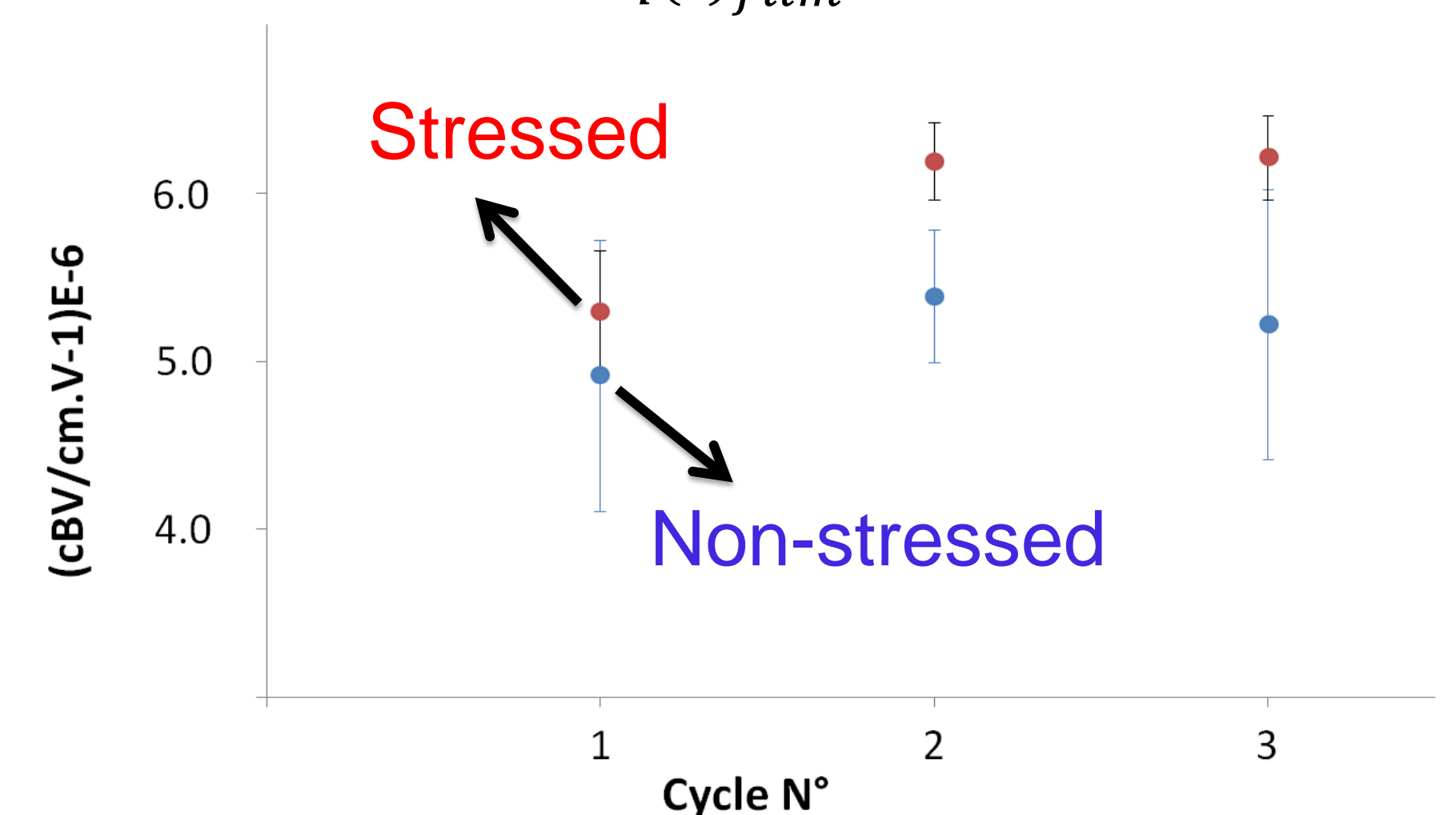


Fig.7: cBV values indicate less protective passive film built over stressed samples than that for non-stressed ones.

References:

- [1] J.C. Scully, Corrosion Science, 15 (1975): p 207.
- [2] P.I. Marshall, G.T. Burstein, Corrosion Science, 24 (1984): p. 463.
- [3] K. Ogle, M. Mokaddem, P. Volovitch, Electrochimica Acta, 55 (2010): p. 916.
- [4] N. Cabrera, N.F. Mott, Rep. Prog. Phys. 12 (1948): p. 163