

# PUBLISHED VERSION

Sanam Mustafa, John Hannagan, Paul Rigby, Kevin Pflieger, and Ben Corry  
**Quantitative Förster resonance energy transfer efficiency measurements using simultaneous spectral unmixing of excitation and emission spectra**  
Journal of Biomedical Optics, 2013; 18(2):026024-1-026024-14

© The Authors. Published by SPIE under a Creative Commons Attribution 3.0 Unported License. Distribution or reproduction of this work in whole or in part requires full attribution of the original publication, including its DOI. [DOI: 10.1117/1.JBO.18.2.026024]

Originally published at:

<http://doi.org/10.1117/1.JBO.18.2.026024>

## PERMISSIONS

<http://creativecommons.org/licenses/by/3.0/>



This is a human-readable summary of (and not a substitute for) the [license](#).

[Disclaimer](#)



### You are free to:

**Share** — copy and redistribute the material in any medium or format

**Adapt** — remix, transform, and build upon the material

for any purpose, even commercially.

The licensor cannot revoke these freedoms as long as you follow the license terms.

### Under the following terms:



**Attribution** — You must give **appropriate credit**, provide a link to the license, and **indicate if changes were made**. You may do so in any reasonable manner, but not in any way that suggests the licensor endorses you or your use.

**No additional restrictions** — You may not apply legal terms or **technological measures** that legally restrict others from doing anything the license permits.

<http://hdl.handle.net/2440/83631>

# Journal of Biomedical Optics

SPIEDigitalLibrary.org/jbo

## **Quantitative Förster resonance energy transfer efficiency measurements using simultaneous spectral unmixing of excitation and emission spectra**

Sanam Mustafa  
John Hannagan  
Paul Rigby  
Kevin Pfleger  
Ben Corry



# Quantitative Förster resonance energy transfer efficiency measurements using simultaneous spectral unmixing of excitation and emission spectra

Sanam Mustafa,<sup>a,b</sup> John Hannagan,<sup>c</sup> Paul Rigby,<sup>d</sup> Kevin Pflieger,<sup>a,b</sup> and Ben Corry<sup>c,e</sup>

<sup>a</sup>Western Australian Institute for Medical Research, Nedlands, Western Australia 6009, Australia

<sup>b</sup>The University of Western Australia, Centre for Medical Research, Nedlands, Western Australia 6009, Australia

<sup>c</sup>The University of Western Australia, School of Chemistry and Biochemistry, Crawley, Western Australia 6009, Australia

<sup>d</sup>The University of Western Australia, Centre for Microscopy Characterisation and Analysis, Nedlands, Western Australia 6009, Australia

<sup>e</sup>The Australian National University, Research School of Biology, Canberra, Australian Capital Territory 0200, Australia

**Abstract.** Accurate quantification of Förster resonance energy transfer (FRET) using intensity-based methods is difficult due to the overlap of fluorophore excitation and emission spectra. Consequently, mechanisms are required to remove bleedthrough of the donor emission into the acceptor channel and direct excitation of the acceptor when aiming to excite only the donor fluorophores. Methods to circumvent donor bleedthrough using the unmixing of emission spectra have been reported, but these require additional corrections to account for direct excitation of the acceptor. Here we present an alternative method for robust quantification of FRET efficiencies based upon the simultaneous spectral unmixing of both excitation and emission spectra. This has the benefit over existing methodologies in circumventing the issue of donor bleedthrough and acceptor cross excitation without the need for additional corrections. Furthermore, we show that it is applicable with as few as two excitation wavelengths and so can be used for quantifying FRET efficiency in microscope images as easily as for data collected on a spectrofluorometer. We demonstrate the accuracy of the approach by reproducing efficiency values in well characterized FRET standards: HEK cells expressing a variety of linked cerulean and venus fluorescent proteins. Finally we describe simple ImageJ plugins that can be used to calculate and create images of FRET efficiencies from microscope images.

© The Authors. Published by SPIE under a Creative Commons Attribution 3.0 Unported License. Distribution or reproduction of this work in whole or in part requires full attribution of the original publication, including its DOI. [DOI: [10.1117/1.JBO.18.2.026024](https://doi.org/10.1117/1.JBO.18.2.026024)]

Keywords: resonance energy transfer; ImageJ; FRET efficiency; fluorescent protein; spectral unmixing; confocal; spectral imaging; spectral bleedthrough.

Paper 12380RR received Jun. 19, 2012; revised manuscript received Dec. 20, 2012; accepted for publication Jan. 29, 2013; published online Feb. 19, 2013.

## 1 Introduction

Förster resonance energy transfer (FRET) is becoming widely utilized to measure the proximity of molecules, structural changes within macromolecules, as a signal of biochemical events and as a sensor of local conditions.<sup>1-6</sup> In FRET, one fluorophore, known as the “donor,” after being excited by an initial photon of light (usually supplied by a laser or a filtered arc lamp), spontaneously transfers its energy to another molecule, the “acceptor,” by a nonradiative dipole-dipole interaction.<sup>7</sup> The probability of energy being transferred in this way is related to both the spectral characteristics of the fluorophores involved and the distance between them, making the technique useful for proximity and structural measurements.

FRET is normally quantified by the efficiency of transfer,  $E$ , which is the proportion of light absorbed by the donor that is transferred in this nonradiative manner to the acceptor. While  $E$  can be determined by measurements of the fluorescence lifetime of the donor fluorophore<sup>8-10</sup> or of the polarization of light emitted from the sample,<sup>11,12</sup> the most commonly used techniques depend upon accurate measurements of the intensities

of light emitted by one or both of the donor and acceptor fluorophores. A requirement for FRET is that the emission spectrum of the donor overlaps with the excitation spectrum of the acceptor, with a greater degree of overlap yielding larger transfer efficiencies. As a consequence, the emission spectrum of the donor usually overlaps that of the acceptor, making it difficult to determine if light measured in the acceptor emission channel has originated from the donor or the acceptor. The appearance of donor fluorescence in the acceptor channel is often termed “donor spectral bleedthrough.”

A second problem is that the excitation wavelengths of the donor and acceptor fluorophores also generally overlap, making it difficult to excite the donor fluorophores without also directly exciting some of the acceptors, an issue known as either acceptor spectral bleedthrough or cross excitation.

In practice these issues are overcome in many different ways. One is to use donor-only samples at the same concentration as the doubly labelled sample (either by creating a second reference sample or by photo bleaching the acceptor fluorophores in the doubly labelled sample) and to monitor the change in intensity in the donor emission channel that is not compromised by acceptor emission.<sup>13-15</sup> Acceptor photo bleaching is destructive meaning that no further measurements can be made on the sample, and often it is difficult to bleach the acceptor without also influencing the donor fluorophores.<sup>16</sup> An alternative is to use post-processing to remove bleedthrough and cross excitation

Address all correspondence to: Ben Corry, The Australian National University, Research School of Biology, Canberra, Australian Capital Territory 0200, Australia. Tel: +61 2 61250842; Fax: +61 2 61250313; E-mail: [ben.corry@anu.edu.au](mailto:ben.corry@anu.edu.au)

through the use of a number of reference images determined for donor only, acceptor only and doubly labelled samples at different excitation and emission wavelengths (sensitized emission).<sup>17-19</sup>

One possible way to circumvent the issue of donor spectral bleedthrough is to take emission measurements at multiple wavelengths so as to recreate the complete emission spectrum of the sample. Once this is done, it can be divided into contributions from the donor and acceptor based upon the spectra of a donor only and acceptor only sample, thus separating donor spectral bleedthrough from acceptor emission. Notably, it is still not possible to directly distinguish between emission from the acceptor due to FRET and due to cross excitation as these signals directly overlap. While such spectral measurements have previously been possible using spectrofluorometers, they have recently become practical for microscopy with the development of spectral detectors that are now common on commercial microscopes, although the longer data collection times required may limit the use in live cell studies of fast cellular interactions.

The concept of unmixing fluorescence spectra to gain FRET efficiencies was described by Clegg,<sup>20</sup> and more recently it has been used to identify FRET from the relative ratio of the donor emission peak to that of the acceptor emission peak in differing samples.<sup>21,22</sup> Spectral unmixing has also been used indirectly in the quantification of FRET as a way to separate spectrally overlapping donor and acceptor signals for use in acceptor photo bleaching or sensitized emission measurements of the transfer efficiency.<sup>23-25</sup> Five recent studies<sup>26-30</sup> have shown how spectral unmixing of the emission spectrum can be used to overcome donor spectral bleedthrough when quantifying the FRET efficiency. This is an ideal way to remove donor spectral bleed through in intensity measurements; however, all these approaches require cross excitation to be corrected in some additional manner.

Just as donor bleedthrough can be removed through unmixing of emission spectra, cross excitation can also be removed, in principle, by unmixing of excitation spectra. That is, the contribution of the donor to emission at a given wavelength can be distinguished from that of the acceptor by examining at what excitation wavelengths the emission arises. Although this approach has previously been suggested as a way to separate spectrally overlapping fluorophores,<sup>31</sup> it is less common due to the lack of availability of multiple excitation wavelengths. While a first step in this direction has been made through the use of three intensity values to quantify FRET in a so called excitation-emission matrix,<sup>32</sup> to the best of our knowledge, the complete unmixing of the combined excitation and emission spectra has not been used to assist in the quantification of FRET.

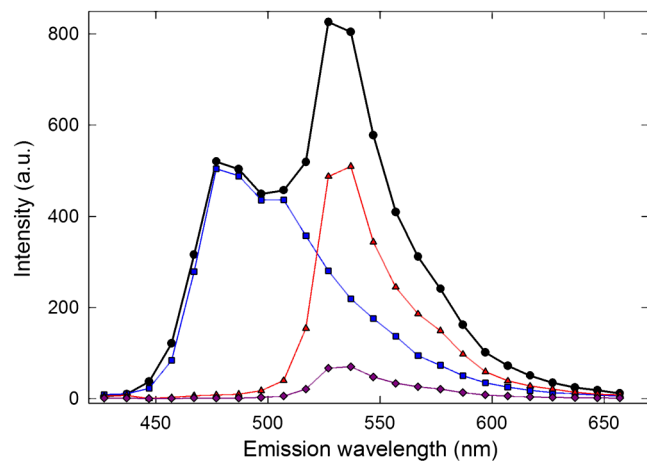
In this manuscript we show that unmixing of the combined excitation/emission spectra (ExEm unmixing) can be used to accurately quantify FRET efficiency without the need for additional corrections for donor spectral bleedthrough or cross excitation. In order to develop and explain the method, we first contrast it to the calculation of FRET obtained by unmixing of only emission spectra (Em unmixing), presenting our own slightly improved approach that includes a correction for cross excitation. We are able to show that the ExEm unmixing approach is accurate with as few as two excitation wavelengths and is therefore applicable to data collected on any microscope or fluorometer with a spectral detector. Both our Em and ExEm methods can be equally well applied to microscope images on a pixel-by-pixel basis, to average intensities of regions of interest

in images or to individual spectra obtained from fluorometer measurements. Furthermore, we have developed simple ImageJ plugins to make both these methods easy to use. As the ExEm method circumvents both the problems of donor spectral bleedthrough and cross excitation without the need for additional corrections, we believe it is a particularly appealing approach for measuring FRET efficiency that overcomes many of the inherent issues involved in intensity-based measurements. In addition, the ExEm method is readily applicable to cases with more than two types of fluorophores as it adds an extra dimension in which to separate the overlapping spectral signatures that can be difficult to distinguish from a single emission spectrum.

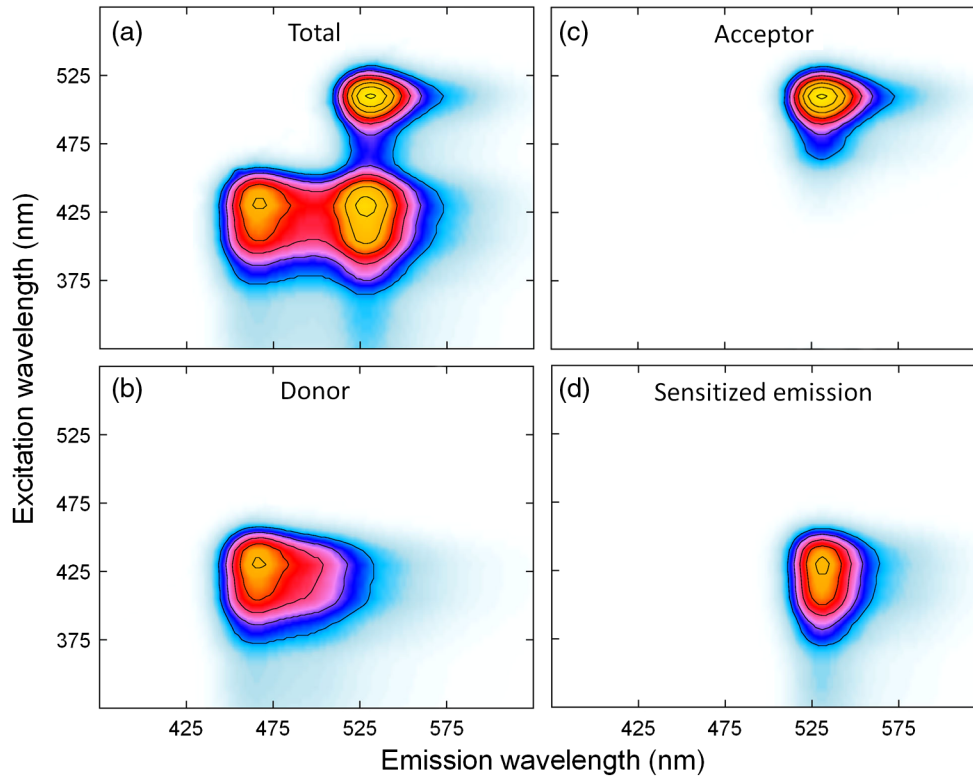
## 2 Theory

Before describing the details of the method, we start by graphically illustrating the principles of the spectral unmixing approaches using a cartoon of recreated data. Figure 1 illustrates the issues of donor spectral bleedthrough and cross excitation. Here the emission spectrum for a sample undergoing FRET is shown in black. This total fluorescence is a combination of emission from the donor (blue), emission from acceptors that were directly excited by the illuminating light (purple) and emission from the acceptor due to the presence of FRET (red). If the emission of the acceptor is being monitored in only one channel (e.g., at around 550 nm in the example) then the FRET signal (red) will be compromised by the presence of donor spectral bleedthrough and directly excited acceptor emission. Collecting the entire emission spectrum as done in the figure allows for the total emission to be decomposed into components originating from the donor and acceptor as done in Em unmixing. However, with only the emission spectra, directly excited acceptors have to be discriminated from those emitting due to FRET in a different way.

In Fig. 2, we show how unmixing both the excitation and emission spectra (ExEm unmixing) can circumvent both donor



**Fig. 1** Illustration of how spectral unmixing of emission spectra (Em unmixing) can be used to remove donor spectral bleedthrough. In a normal emission spectrum for a sample undergoing FRET, the total emission (black) is composed of donor emission (blue), emission from acceptors that were directly excited (purple) and emission from acceptors due to FRET (red). Monitoring emission at only one wavelength means that these three components cannot be distinguished. If the complete spectrum is recorded, the donor emission can be unmixed as it is spectrally distinct from the acceptor emission, but directly excited acceptors have to be accounted for in a different way.



**Fig. 2** Illustration of how simultaneous unmixing of excitation and emission spectra (ExEm unmixing) can be used to remove both donor spectral bleedthrough and cross excitation. The total excitation/emission spectrum for a sample undergoing FRET (a), is composed of donor emission (b), emission from acceptors that were directly excited (c) and emission from acceptors due to FRET (d). As none of these peaks directly overlap they can be unmixed from one another.

spectral bleedthrough and cross excitation. In Fig. 2(a), we show the emission spectra of a sample undergoing FRET obtained at a number of excitation wavelengths, and again, the total emission includes light originating from both the donor and acceptor fluorophores. However, the addition of the excitation dimension means that emission from the donor, emission from directly excited acceptors, and emission from acceptors due to FRET do not coincide. Thus simple unmixing of the spectra can be used to directly determine the FRET signal, and thus FRET efficiency can be calculated without the need for additional corrections as has previously been required.

### 2.1 FRET by Em Spectral Unmixing

Although the focus of this manuscript is simultaneous unmixing of both excitation and emission spectra, we start by introducing the simpler unmixing of emission spectra. This method requires the collection of five different spectra as listed below and shown schematically in Fig. 3, as well as background spectra (collected from background regions of each image or spectra taken on blank samples) for background correction. To keep the naming convention consistent throughout this manuscript, **S** refers to a spectrum (i.e., fluorescence intensity at a number of different wavelengths) rather than a single intensity value, while **I** refers to the intensity in a single wavelength channel, in this case the channel with maximum intensity. The superscripts describe the samples, *D* for a donor only sample, *A* for an acceptor only sample and *DA* for a sample containing both donor and acceptor fluorophores (the FRET sample). The subscripts refer to the wavelength of excitation light used to obtain the spectra,

which will be designed to either excite the donor fluorophores *D*, or acceptor fluorophores *A*.

- $S_D^D$  Reference spectrum 1, donor only sample, donor excitation
- $S_D^A$  Reference spectrum 2, acceptor only sample, donor excitation
- $S_A^A$  Reference spectrum 3, acceptor only sample, acceptor excitation
- $S_D^{DA}$  FRET spectrum, donor + acceptor sample, donor excitation
- $S_A^{DA}$  Acceptor spectrum, donor + acceptor sample, acceptor excitation
- B** Background spectrum for each of the above. Can be obtained from a background region of interest (ROI) in each of the images.

The spectra should all be collected using the same instrument settings (i.e., laser power, detection wavelengths, etc). For this reason, the reference spectra should ideally be collected at the same time as collecting the FRET data. Note that the two acceptor only spectra ( $S_D^A$  and  $S_A^A$ ) should be taken on the same sample, as should the two double-labelled spectra ( $S_D^{DA}$  and  $S_A^{DA}$ ).

The process of calculating the FRET efficiency can then be broken into the following steps as shown in Fig. 3.

1. Background correction. Each of the reference spectra should be corrected to remove the background signal.

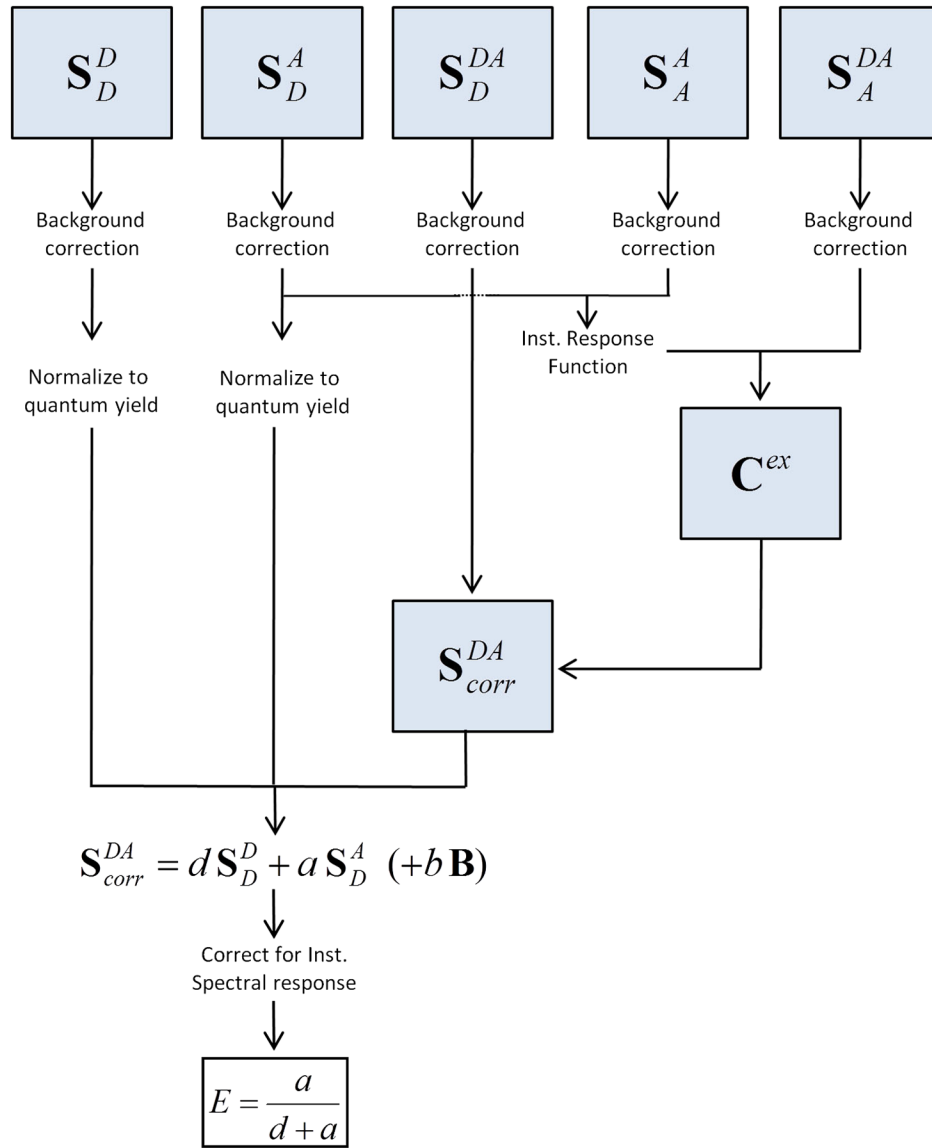


Fig. 3 Process for calculating FRET using Em unmixing.

When collecting the spectra from microscope images, the background spectrum can be obtained simply from the intensity of a background ROI in each of the channels used for gaining the fluorescence spectra. In a fluorometer, the background spectrum will be taken from a blank sample (for example, containing mock transfected cells). This background spectrum can then be either directly subtracted or unmixed from the spectra of your sample. The first approach is appropriate if the background is stable and the relative concentration of cells in the sample and background are known as in the case of collecting microscope images. When collecting spectra on a fluorometer, it is possible that the concentration of cells in the blank sample may be different from that in the sample of interest due to differing growth of the mock transfected cells, and thus the background spectra should be multiplied by a factor before it is subtracted from the sample of interest. The value of this multiple can be determined using

a spectral unmixing procedure in which the spectrum of interest is a linear combination of the background and the signal of interest:

$$\mathbf{S} = c\mathbf{S}^{corr} + b\mathbf{B} \quad (1)$$

in which  $\mathbf{S}^{corr}$  is a previously calculated background-corrected spectrum of the sample.

The FRET spectrum  $\mathbf{S}_D^{DA}$  needs to also be background corrected. If you are using simple background subtraction, that can be done at this stage. For background unmixing, this is best done at step 4 below.

2. Correct the FRET spectrum,  $\mathbf{S}_D^{DA}$ , to account for cross excitation to remove fluorescence arising from the acceptor molecules being directly excited when illuminating with the donor excitation wavelength. This is done by an approach similar to that used by Ecker et al.,<sup>33</sup> but extended to quantitative measurement as

done by Chen et al.<sup>27</sup> The idea is to compare the concentration of acceptor in the FRET sample compared with that in an acceptor only sample. The amount that the donor excitation excites the acceptor fluorophores in the FRET sample can then be determined from the amount that this arises in the acceptor only sample.

We expect that the intensity emitted in an acceptor only sample when it is excited with donor excitation is a small fraction of that found when exciting with acceptor excitation. Ideally, we would also expect that this fraction would be the same, irrespective of the brightness of the specific sample being studied. In this case the cross excitation component of the FRET spectrum will be

$$C^{cx} = \frac{S_A^{DA}}{S_A^A} S_D^A. \quad (2)$$

However, as noted in the results section and previously described by Chen et al.,<sup>27</sup> we found this was not strictly true due to the nonlinear response of the photomultiplier tube (PMT) detectors to different incident light levels. Although a linear response is expected when using wide field illumination and charge-coupled device (CCD) cameras,<sup>27,28</sup> to allow for the possibility of nonlinear responses, we follow the lead of Chen et al. Rather than define the cross excitation fraction by a single number, we find it preferable to define a function that relates the brightness of the sample (in this case measured by the intensity under acceptor excitation) to the intensity of the acceptor only sample when excited by acceptor excitation. We call this the instrument response function,  $F(I) = (I_A^A/I_D^A)$ , which includes the specific response of the instrumentation being used as a function of the sample with acceptor excitation  $I_A^A$ . Following the lead of Chen et al.,<sup>27</sup> we calculate this correction by dividing the pixels in the acceptor only images into intensity ranges and calculating the correction ratio for each range.

Once this function has been determined, the cross-excitation component of the FRET spectrum can be determined as:

$$C^{cx} = \frac{1}{F(I_A^{DA})} S_A^{DA}. \quad (3)$$

This can be removed from the FRET spectrum to give

$$S_{corr}^{DA} = S_D^{DA} - C^{cx}. \quad (4)$$

3. Normalize the two reference spectra such that the area under each entire spectrum equals the quantum yield ( $Q$ ) of that fluorophore:

$$S_D^D = S_D^D \times \frac{Q_D}{\sum_{\lambda} S_D^D}, \quad S_A^A = S_D^D \times \frac{Q_A}{\sum_{\lambda} S_D^A}. \quad (5)$$

4. Deconvolute the FRET spectrum into contributions from donor and acceptor fluorescence using the two

reference spectra to find the scalar coefficients  $d$  and  $a$  best satisfying the equation below, noting that the background spectrum is included only if it has not already been subtracted from the spectrum of the FRET sample

$$S_{corr}^{DA} = dS_D^D + aS_D^A + bB. \quad (6)$$

5. A final complication arises when using PMT detectors as these can respond differently to different wavelengths of light. Most notably these respond nonlinearly to the intensity of the incident light for faint samples in the red, but such nonlinearity is less obvious at shorter wavelengths. Such differing responses of the detector can change the relative brightness of the donor and acceptor fluorophores and alter the calculated FRET efficiency. In our case, good results were obtained for bright samples, but the apparent FRET efficiency decreased with sample brightness as described in the results section. To allow for fainter samples to be included, the relative brightness of the fluorophores needs to be corrected for the spectral response of the detectors at each intensity. In this case a correction factor,  $G(I)$ , was determined for each intensity value as described in the results, and the coefficient in Eq. (6) corrected according to

$$a = G(I)a. \quad (7)$$

6. Calculate the FRET efficiency using

$$E = \frac{a}{d+a}. \quad (8)$$

Whilst very similar to the method of Chen et al.,<sup>27</sup> we use unmixing not only to remove the cross excitation, but also when calculating the coefficients used to determine the FRET efficiency [Eq. (6)] rather than using the intensities in a single channel. This approach also allows for a direct extension to the ExEm method described below.

## 2.2 FRET by ExEm Spectral Unmixing

The ExEm method essentially reduces to the Em method when only two excitation wavelengths chosen as the donor and acceptor excitation wavelengths are used. However, the ExEm approach is simpler (even when only two excitation wavelengths are employed) as no cross-excitation correction is required. Four spectra are required for this method, with the fluorescence intensity recorded at a number of excitation and emission wavelengths. The subscript denoting the excitation wavelength is dropped in the following equations as each spectrum includes multiple excitation wavelengths.

- $S^D$  Reference spectrum 1, donor only sample
- $S^A$  Reference spectrum 2, acceptor only sample
- $S^{DA}$  FRET spectrum, donor + acceptor sample
- $B$  Background spectrum

FRET is then calculated using the following procedure illustrated in Fig. 4:

1. Background correction. The background should be removed from each spectrum, either by subtraction or unmixing as above. For microscopy images, the background can be taken from a ROI in each sample, while for fluorometer measurements this will be made on a separate control sample.
2. Normalize the reference spectra. The volume under the donor only spectra should equal the quantum yield of the donor,  $Q_D$ ; the volume under the acceptor only spectra should equal the acceptor quantum yield,  $Q_A$ .

$$\mathbf{S}^D = \mathbf{S}^D \times \frac{Q_D}{\sum_{\lambda_{ex}} \sum_{\lambda_{em}} S^D} \quad \mathbf{S}^A = \mathbf{S}^A \times \frac{Q_A}{\sum_{\lambda_{ex}} \sum_{\lambda_{em}} S^A} \quad (9)$$

3. Create a reference sensitized emission spectrum. Sensitized emission will present itself as fluorescence occurring with the donor excitation wavelengths and the acceptor emission wavelengths. A reference sensitized emission spectrum can be created by combining the normalized donor only and acceptor only spectra according to:

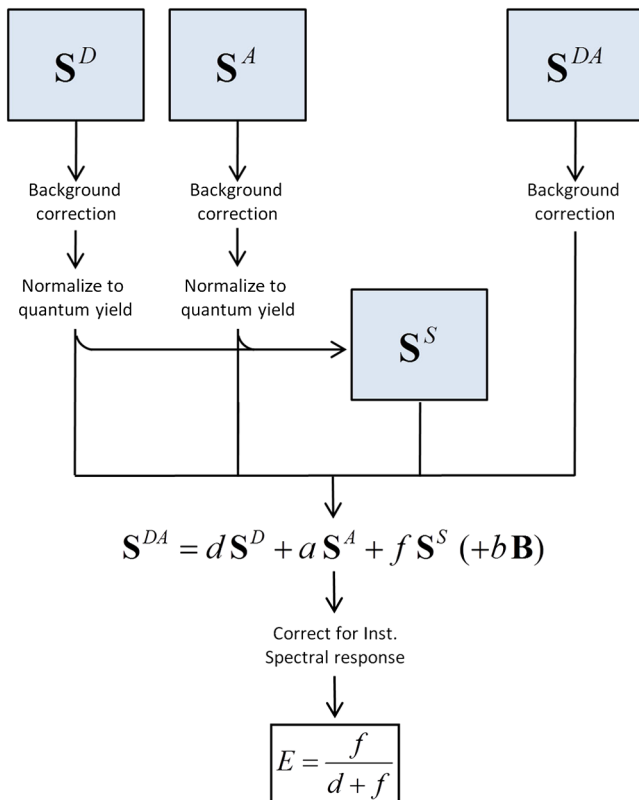


Fig. 4 Process for calculating FRET using ExEm unmixing.

$$\mathbf{S}^S(\lambda_{ex}, \lambda_{em}) = \left[ \sum_{\lambda_1} \mathbf{S}^D(\lambda_{ex}, \lambda_1) \right] \times \left[ \sum_{\lambda_2} \mathbf{S}^A(\lambda_2, \lambda_{em}) \right], \quad (10)$$

in which  $\mathbf{S}^s(\lambda_{ex}, \lambda_{em})$  is the intensity of sensitized emission at excitation wavelength  $\lambda_{ex}$  and emission wavelength  $\lambda_{em}$ ;  $\mathbf{S}^D(\lambda_{ex}, \lambda_1)$  is the intensity of donor emission at excitation wavelength  $\lambda_{ex}$  and emission wavelength  $\lambda_1$ ; and  $\mathbf{S}^A(\lambda_2, \lambda_{em})$  is the intensity of acceptor emission at excitation wavelength  $\lambda_2$  and emission wavelength  $\lambda_{em}$ . This reference sensitized emission spectrum should itself be normalized to the quantum yield of the acceptor,  $Q_A$ . This is done most easily by normalising  $\mathbf{S}^D$  to 1 and  $\mathbf{S}^A$  to  $Q_A$  before calculating  $\mathbf{S}^S$ .

4. Deconvolute the double-labelled spectra into contributions from donor fluorescence, direct acceptor fluorescence and sensitized emission to find the three scalar coefficients  $d$  and  $a$  and  $f$  best satisfying the equation below, noting that the background spectrum is only included if it has not previously been subtracted from the spectra from the double-labelled sample

$$\mathbf{S}^{DA} = d\mathbf{S}^D + a\mathbf{S}^A + f\mathbf{S}^S + b\mathbf{B}. \quad (11)$$

5. If required, correct for the spectral response of the detectors according to the intensity of the sample as for the Em method.

$$f = G(I)f. \quad (12)$$

6. Calculate the FRET efficiency

$$E = \frac{f}{d + f}. \quad (13)$$

### 2.3 Unmixing Algorithm

The removal of background spectra, the determination of the relative acceptor concentrations in the acceptor only and FRET samples, as well as the separation of the corrected FRET spectrum into contributions from donor and acceptor fluorescence, requires the unmixing of a complex spectrum into contributions from two or more reference spectra. Techniques for doing this are now commonly implemented in microscope software, but it can be done simply using standard linear algebra. Using the example in Eq. (6) with no background unmixing, we can set  $\delta(\lambda)$  as the difference between the sum of the reference spectra and the FRET spectrum:

$$\delta(\lambda) = S_{corr}^{DA}(\lambda) - [dS_D^D(\lambda) + aS_D^A(\lambda)]. \quad (14)$$

Now the task is to find the values of  $d$  and  $a$  that minimize  $\delta(\lambda)$  by minimizing the value of  $\epsilon$  defined as:

$$\epsilon = \sum_{\lambda} \delta(\lambda)^2. \quad (15)$$

This can be done in many ways using standard matrix techniques. Here we minimize  $\epsilon$  by finding its derivative, setting it



equal to zero and solving the resulting equations using Gauss-Jordan elimination for both the Em and ExEm methods.

### 3 Experimental Methods

Human embryonic kidney (HEK293FT) cells were maintained at 37°C in 5% CO<sub>2</sub> and complete media (Dulbecco's modified Eagle's medium (DMEM) containing 0.3 mg/ml glutamine, 100 IU/ml penicillin and 100 µg/ml streptomycin (Gibco) supplemented with 10% foetal calf serum (FCS) and 400 µg/ml Geneticin (Gibco). Transient transfections were carried out 24 h after cell seeding using Genejuice (Novagen) according to the manufacturer's instructions in six-well plate format (0.3 µg cDNA/well). Experiments were performed 48 h post-transfection.

Transfected HEK293FT cells were fixed with 4% (weight/volume) paraformaldehyde/5% (weight/volume) sucrose for imaging on a Nikon A1 laser scanning confocal microscope using a Nikon PlanApo VC 60× NA 1.4 oil-immersion objective lens. The samples were illuminated with either a 405 or 488 nm solid-state laser to excite the cerulean (donor) and venus (acceptor) proteins, respectively. Images were taken in spectral mode, with data separated into 24 wavelength channels at 10 nm intervals between 420 and 660 nm.

For measurement on the spectrofluorometer, cells were suspended in phenol red-free DMEM buffer, placed in a 1 cm path-length cuvette and emission spectra obtained on a Varian Cary Eclipse Spectrofluorometer from intensities recorded at 56 different emission wavelengths between 430 and 650 nm for each of 44 different excitation wavelengths between 380 and 552 nm.

### 4 Results

The ExEm unmixing method described here was tested by determining the FRET efficiencies for five well-characterized FRET standards for which the FRET efficiency has previously been determined using a number of techniques. Three of the FRET standards involve cerulean and venus fluorescent proteins joined by linkers of 5, 17, or 32 amino acids termed C5V, C17V, and C32V, respectively.<sup>34</sup> The last two involve either two cerulean proteins joined to one venus (CVC) or two venus joined to one cerulean (VCV).<sup>35</sup>

In addition to the FRET standards expected to display FRET values greater than 0.3, we include a non-fretting sample consisting of a mixture of cells expressing either Cerulean or Venus cDNA. In this sample, the donor and acceptor are far from each other (in separate cells), making FRET extremely unlikely. However, light collected from the sample will contain emission from both donor and acceptor. Thus analyzing the emitted light provides a good test that the unmixing procedure can separate the donor and acceptor fluorescence and find no sensitized emission. When using the fluorometer, the two cell samples were mixed in a sample cuvette so that the recorded spectrum included emission from both cell samples. For the microscope data, pairs of ROIs (one of a cell expressing Cerulean and one of a cell expressing Venus) are combined.

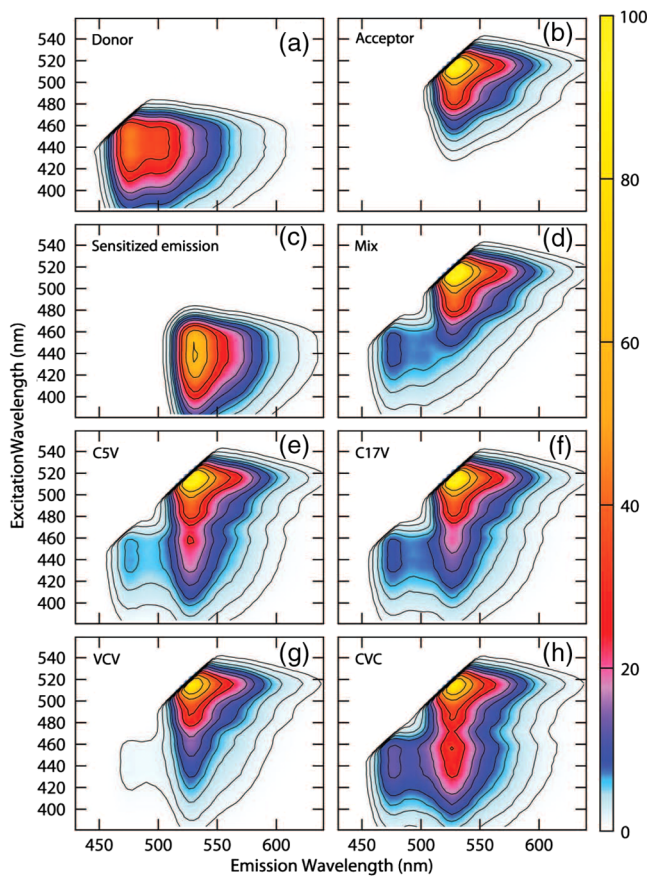
Each of these constructs was expressed in HEK293FT cells, and the FRET efficiency was determined using each of the methods described here as summarized in Table 1 and described in more detail below.

#### 4.1 FRET from ExEm Spectral Unmixing of Fluorometer Data

Examples of the ExEm spectra obtained on the fluorometer are shown in Fig. 5, including the sensitized emission spectrum obtained from convoluting the donor and acceptor spectra as described in Eq. (10). The spectra obtained for the "Mix" sample, which included cells expressing either cDNA for cerulean only or venus only mixed in the sample cuvette, shows the donor and acceptor peaks, but the third sensitized emission peak is not present, indicating that no FRET is taking place. In contrast, each of the C5V, C17V, VCV, and CVC samples clearly show three peaks corresponding to emission directly from the donor, directly excited acceptor and sensitized emission. As described in the introduction, in contrast with Em emission spectra in which the sensitized emission and directly excited acceptor emission overlap, in the ExEm case a new third peak appears when FRET is taking place making the presence of FRET unambiguous. The relative intensity of the donor and sensitized emission peaks can be used to obtain the FRET efficiencies, which are reported in Table 1. These data also show excellent agreement with reported values indicating the

**Table 1** FRET efficiencies ± standard error in the mean determined for each of the methods described here and the values reported in the literature by Koushik et al.<sup>34</sup> and Chen et al.<sup>35</sup> Numbers in brackets refer to the number of independent cells used to obtain the average FRET efficiency. Standard errors are not given for the fluorometer data as these are obtained from only one set of spectra for each situation.

Sample	FRET efficiency				Reported value
	Fluorometer	Microscope			
		ExEm	ExEm	Em	
C5V	0.42	0.44 ± 0.01 (134)	0.43 ± 0.01 (134)	0.43 ± 0.02 <sup>34</sup>	
C17V	0.38	0.38 ± 0.01 (32)	0.39 ± 0.02 (32)	0.38 ± 0.03 <sup>34</sup>	
C32V	0.30	0.34 ± 0.02 (75)	0.33 ± 0.01 (75)	0.31 ± 0.02 <sup>34</sup>	
VCV	0.73	0.63 ± 0.04 (30)	0.60 ± 0.04 (30)	0.69 ± 0.01 <sup>35</sup>	
CVC	0.36	0.41 ± 0.02 (106)	0.42 ± 0.02 (106)	0.40 ± 0.01 <sup>35</sup>	
Mix	0.00	0.00 ± 0.01 (54)	-0.01 ± 0.03 (54)		



**Fig. 5** Example spectra from ExEm spectral unmixing of data collected on a spectrofluorometer. ExEm spectra are shown for (a) cerulean only; (b) venus only; (c) the sensitized emission spectrum obtained from convoluting the donor only and acceptor only spectra; (d) a mixture of cells expressing either venus or cerulean only; (e) C5V; (f) C17V; and (g) VCV and (h) CVC. Contours are shown at intensity levels of 1, 2, 4, 6, 8, 12, 16, 24, 32, 48 and 64.

feasibility of using the ExEm unmixing approach for quantifying FRET efficiencies.

#### 4.2 How Many Excitation Wavelengths Are Required?

The ExEm spectra obtained from the fluorometer involve 44 different excitation wavelengths and 56 different emission wavelengths. While it is easy to collect such data on a spectrofluorometer in which the excitation wavelength can be changed at will, this may not be so easy if the method was to be used on a microscope. Thus it is important to know how many different excitation wavelengths are required to accurately determine the FRET efficiency using ExEm spectral unmixing.

To answer this question, smaller quantities of data were extracted from the ExEm spectra, and calculations were made just using these. Surprisingly, as can be seen in Table 2, accurate results were obtained with as few as two excitation wavelengths, including those used in collecting the microscope data. This suggests that the ExEm approach could be extended to microscope data without the need for a large number of excitation wavelengths. Although the fact that good results can be obtained with such little data may seem surprising, it is worth noting that relatively good results have been obtained both here and elsewhere using the Em unmixing method with only two

**Table 2** FRET efficiency determined for C5V with ExEm spectral unmixing using different amounts of data based upon the numbers of excitation wavelengths. All results make use of the complete number (56) of emission wavelengths.

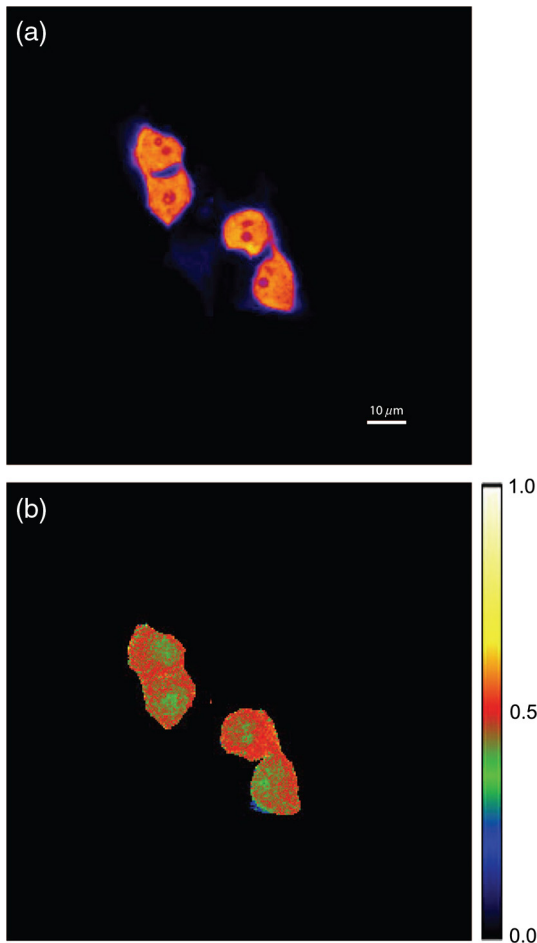
Number of excitation wavelengths	FRET efficiency	Wavelengths used
44	0.418	
22	0.418	
11	0.419	
7	0.417	
5	0.412	
4	0.422	420, 464, 508, 552
3	0.414	424, 472, 520
3	0.412	428, 480, 532
3	0.416	432, 488, 544
3	0.420	404, 460, 508
2	0.412	408, 508
2	0.418	420, 508
2	0.414	404, 488

excitation wavelengths. Better results should be expected from the ExEm method when given the same amount of data as the Em method, as there is no need for cross excitation corrections.

#### 4.3 FRET from Spectral Unmixing of Microscope Data

Spectral unmixing of the microscope data can be performed in two ways, both of which are implemented in our ImageJ plugins described below. The first is to calculate the FRET efficiency of each pixel of the image (Fig. 6), to produce an image of FRET efficiencies. The FRET efficiencies in ROIs in the image, corresponding with each of the cells being imaged, can then be averaged. Alternatively, intensities can be averaged within each ROI in the microscope images resulting in a single set of spectra for each cell, as depicted in Fig. 7, which can be unmixed to calculate the average FRET efficiency for each cell. While the first method allows a graphical representation of FRET occurring in the cell and is good for visualizing regions in the cell with different FRET efficiencies, the second approach of first averaging intensities in an ROI before calculating FRET provides slightly more reliable quantitative results which are less prone to movement or noise. Thus we report the values obtained in this second approach in Table 1.

To test if the ExEm unmixing algorithm could be used to quantify FRET from microscope images obtained at two excitation wavelengths, we analyzed spectral images of the cerulean-venus constructs expressed in HEK cells. An example of the ExEm spectra constructed from the microscope data is shown in Fig. 7. While these may not look as informative as



**Fig. 6** Construction of FRET image: (a) An excerpt of a  $512 \times 512$  pixel confocal microscope image of HEK293FT cells expressing the C5V construct. Each pixel is approx  $0.415 \mu\text{m}$  across and a  $10 \mu\text{m}$  scale bar is shown. The color represents fluorescence intensity using the ImageJ lookup table “fire.” (b) A FRET efficiency image created using the ExEm unmixing method for each pixel. Scale bar shows coloring of efficiency values.

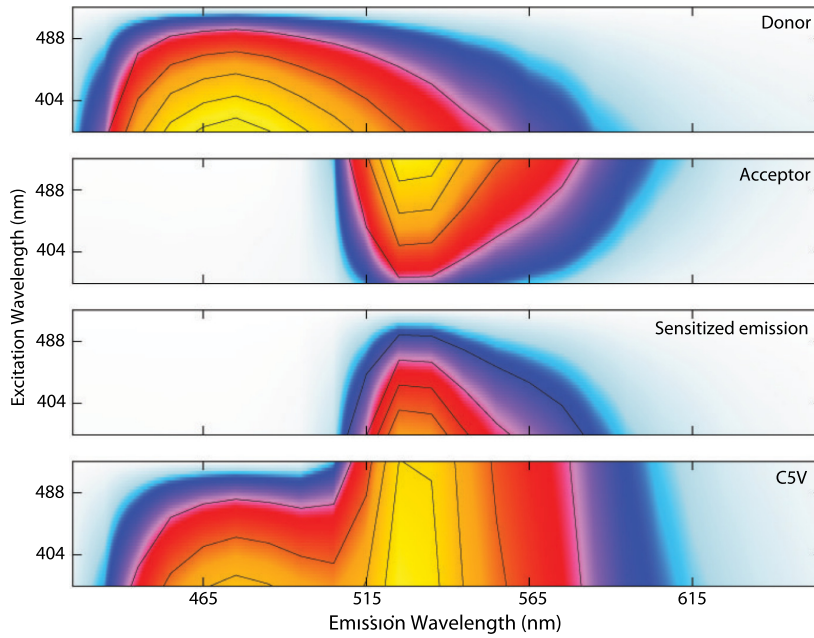
the spectra pictured in Fig. 5, it is evident that the C5V sample has three high-intensity regions corresponding with donor emission, sensitized emission, and directly excited acceptor emission.

Using the ExEm unmixing method, it is possible to directly calculate the FRET efficiency of each of the cells in the microscope images to compare with reported values. In our case, however, an additional instrumental correction is required to allow pixels of all intensities to be included. To illustrate this, in Fig. 8 we show the FRET efficiency for each of the C5V cells, determined using the ExEm spectral unmixing method with no correction for the spectral sensitivity of the detectors. Clearly, at both the level of individual pixels [Fig. 8(a)] or within ROIs encompassing each cell [Fig. 8(b)], the calculated FRET efficiency changes dramatically as a function of the total brightness of the pixel or ROI. That is, fainter parts of the images have a lower FRET efficiency than brighter parts. A similar effect has previously been reported by Chen et al.<sup>27</sup> and Levy et al.<sup>30</sup> who noted that the PMT detectors on common microscopes do not respond linearly to different incident light intensities, and that this response may differ depending on the incident wavelength. In our case, the detectors show a much greater deviation from

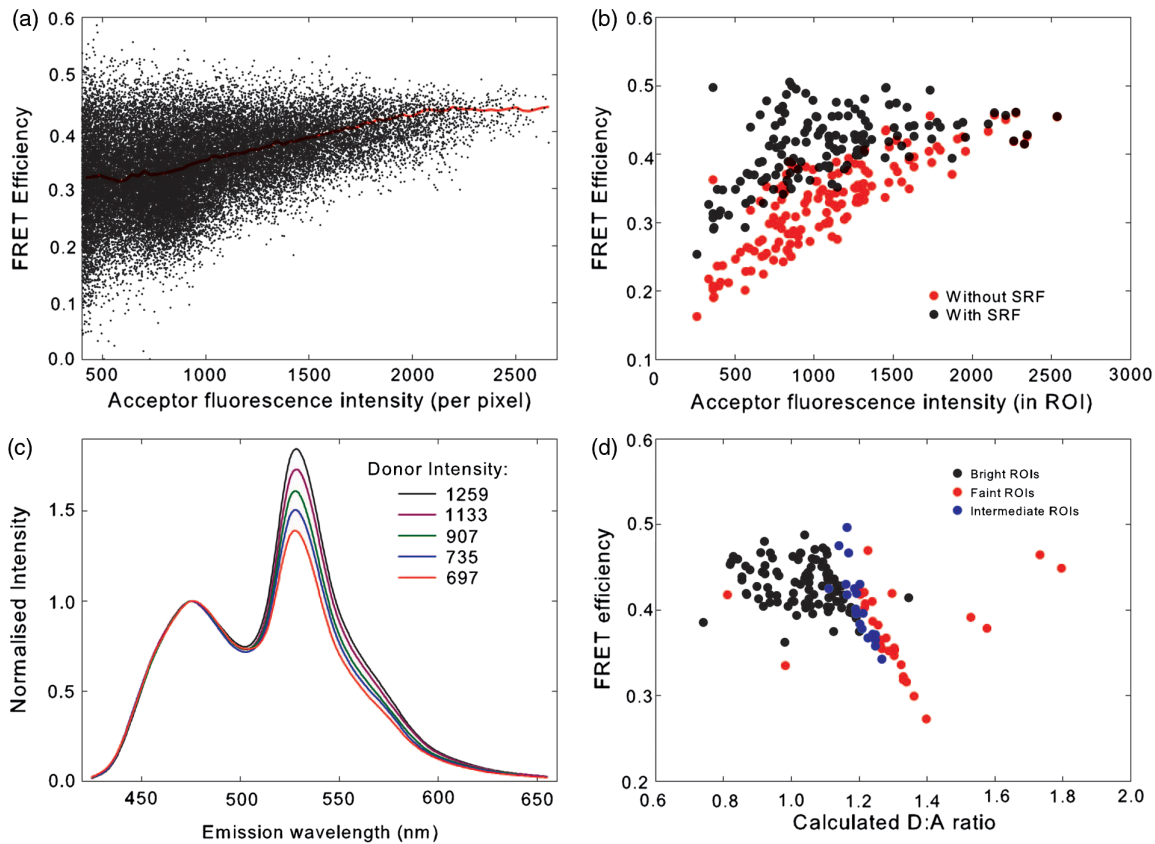
linearity in the red part of the spectrum (longer wavelengths) than in the blue (shorter wavelengths). As a consequence, the acceptor emission appears less intense relative to the donor emission in faint cells compared with bright cells as can be seen in the emission spectra plotted in Fig. 8(c). As can be seen in Fig. 8(a), the efficiency values approach a constant value at high intensities, so it is possible to gain accurate results by using only the brightest parts of the images. However, if reliable results are to be obtained independent of the pixel brightness, then a correction for the spectral response of the instrument is required. It is worth noting that while this nonlinear response is common in most PMT detectors, it may not be to the level reported here if the instrument has been well precalibrated and linearized. Furthermore, such nonlinearity is not generally present for CCD cameras which are more common on wide field microscopes. Thus the instrument spectral response correction may not be required in many cases.

While the spectral response can be calibrated using a light source with a well characterized intensity versus wavelength output,<sup>30</sup> such a source is not often readily available. The spectral response can also be corrected by noting that for a sample with fixed donor to acceptor stoichiometry, as in any one of the FRET samples used here, the ratio of donor to acceptor intensity should not change with pixel brightness. Thus deviations from this constant value represent the different response of the detector to different wavelengths of incident light. To apply this correction, one set of images was chosen as a control and the pixels were divided into intensity ranges based upon the brightness in one channel representing acceptor emission with either donor or acceptor excitation. The ratio of the total donor emission to acceptor emission [characterized by the coefficients  $d$  and  $f$  in Eq. (11)] was calculated for each pixel intensity range, then normalized to the ratio in the 10 brightest pixel intensity ranges and stored in a table we call the spectral response function,  $G(I)$ . The normalization to the brightest channels is done as the detector response appears linear for all wavelengths in these bright channels. The data in the spectral response table represents the amount by which the acceptor intensity needs to be multiplied to account for the nonlinear response of the detectors such that the ratios will be the same as in the bright pixel intensity ranges. Thus the correction can be applied during the FRET calculation by multiplying the coefficient  $f$  in Eq. (11) by the spectral response correction corresponding to the intensity of the pixel for which the calculation is being made,  $f \rightarrow f \times G(I)$ , before proceeding to calculate the FRET efficiency.

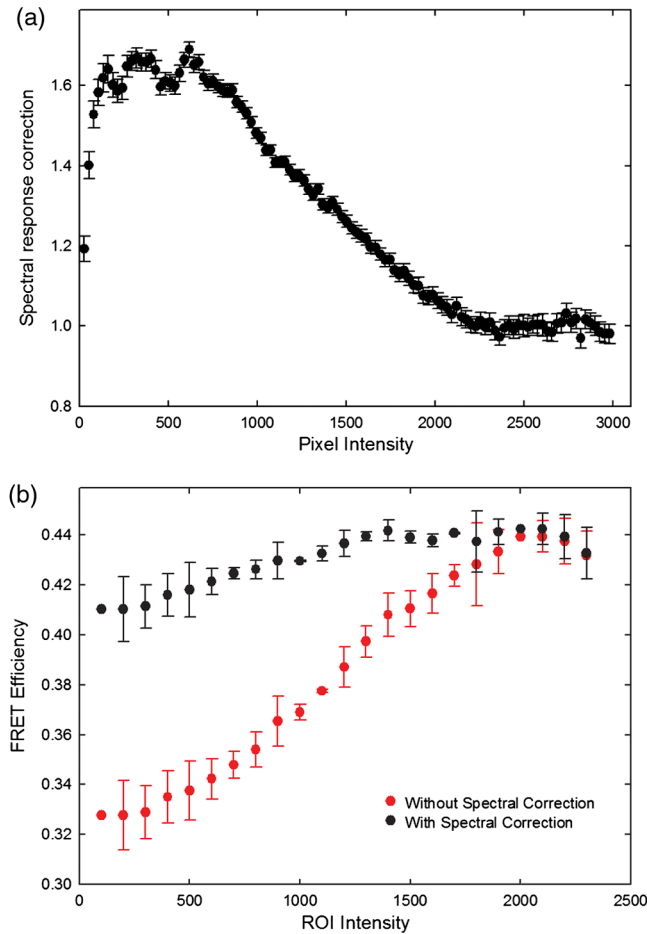
An example of the calculated spectral response correction is shown in Fig. 9. It can be seen that the poor response of the PMTs to red light means that the intensity of the acceptor is underestimated by up to 1.6 fold in the faint pixels. To demonstrate the effectiveness of the spectral response correction, the FRET efficiencies determined in ROIs corresponding to 134 different cells expressing C5V are plotted in Fig. 8(b) with and without the spectral correction. The clear dependence of efficiency on ROI intensity that is present prior to spectral response correction is removed when the correction is applied. This can be seen even more clearly in Fig. 9(b) where we show the average FRET efficiency calculated from the ROIs shown in Fig. 8(b), using only the ROIs that have an average intensity above the value shown on the  $x$ -axis. Without the spectral response correction, the FRET efficiency only converges to a stable value for ROIs with an intensity greater than 2000.



**Fig. 7** Example data from ExEm unmixing of microscope data. ExEm spectra are shown for (a) cerulean only; (b) venus only; (c) the sensitized emission spectrum found from convoluting the cerulean and venus spectra; and (d) the C5V construct.



**Fig. 8** FRET efficiency calculations without instrument spectral response correction: (a) The FRET efficiency calculated at each pixel of an image of HEK293FT cells expressing C5V is plotted versus the acceptor emission intensity of the pixel (in the wavelength channel representing the peak in acceptor emission). The average FRET efficiency for each pixel intensity value is shown by the red line. (b) The FRET efficiency calculated in ROIs corresponding to cells expressing C5V are shown without (red) and with (black) instrument spectral response correction as a function of the average acceptor emission intensity in the ROI. (c) Emission spectra found for ROIs corresponding to cells expressing C5V under 405 nm excitation, normalized to the intensity of maximal donor emission. Each line corresponds with the spectrum found for an ROI with different emission intensity in the donor channel as indicated in the legend. (d) The FRET efficiency calculated in ROIs corresponding to cells expressing C5V are plotted against the calculated unquenched donor:acceptor ratio. The faintest ROIs are shown in red and blue, while the bright ROIs presenting robust data are shown in black.



**Fig. 9** Instrument spectral response correction: (a) The spectral response correction  $[C(I)]$  related to the normalized ratio of donor to acceptor emission intensities in a sample with fixed FRET efficiency is plotted against the maximal acceptor emission intensity of each pixel. (b) The average FRET efficiency for cells expressing C5V is shown using only ROIs that have average acceptor intensity above the value shown on the x-axis, before (red) and after (black) instrument spectral response correction.

While it is difficult to completely account for the detector efficiency for the faintest cells, good results are obtained for all ROIs with intensity above 500.

Random association of fluorophores can produce a systematic change in FRET efficiency with fluorophore density due to the presence of inter-molecular FRET.<sup>36,37</sup> Such a behavior is not expected in our system given the likely expression levels of the constructs. The dependence of FRET efficiency upon fluorescence intensity seen in our raw data appears to be due to the spectral sensitivity of the detectors rather than increasing fluorophore association. This is supported by the FRET efficiency being constant for all the bright ROIs and the change in efficiency with brightness being mostly removed after spectral correction. To further support this claim, we plot the FRET efficiency calculated for ROIs shown in Fig. 8(b) versus the unquenched (calculated) donor:acceptor ratio [Fig. 8(d)]. While there is some scatter in the individual values about unity, there is no systematic trend in the results as would be expected if inter-molecular FRET was occurring. The tail of high D:A ratios is almost completely from the low intensity ROIs (red), indicating that they do not provide robust data.

The FRET efficiency values obtained using ExEm spectral unmixing of the microscope data, averaged over all the imaged cells, are given in Table 1. The results are in close agreement with the previously reported values for these samples and those obtained from unmixing the fluorometer data. The negative control is also calculated to have no FRET taking place.

#### 4.3.1 Em unmixing of microscope data

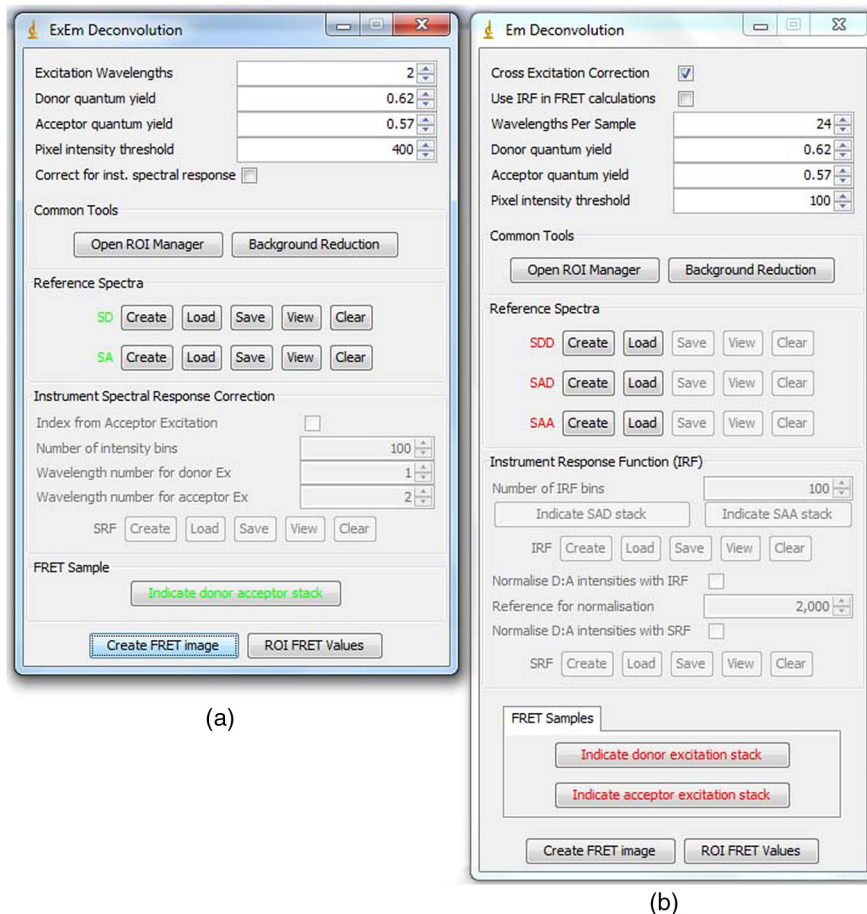
As a final test of the ExEm spectral unmixing algorithm, we compare the results with those obtained using our version of the Em unmixing approach, which only unmixes emission spectra. In this case an additional cross-excitation correction is required to remove the signal of the directly excited acceptors from the FRET signal. As described in the theory section, this can be done by observing the proportion of acceptors excited with donor excitation compared with those excited with acceptor excitation in an acceptor only signal accounting for the instrument response of the detector. While the instrument response correction used when doing the cross-excitation correction has a common origin as the spectral response correction described earlier (the nonlinear response of the PMT detectors), this second correction only accounts for the response of the detectors at the acceptor emission wavelengths, while the spectral response correction contains the relative response of both the donor and acceptor emission wavelengths. As for the ExEm unmixing algorithm, a spectral response correction is also required for the Em method when using PMT detectors. Thus the Em method requires cross excitation correction and two instrument response corrections when using PMTs. In contrast, the ExEm method requires no corrections for the fluorometer data or CCD detectors and only one instrument response correction when using PMTs.

The FRET efficiency values obtained with ExEm unmixing show general agreement with that obtained using the Em approach as shown in Table 1. Notably, the ExEm approach yields more reliable results for faint pixels and is closer to the reported values for the VCV construct.

## 5 ImageJ Plugins

A plugin for ImageJ called “Fretty” has been developed to expediate the analysis of microscope images using the methods described here. This contains two methods, one for each of the Em and ExEm spectral unmixing approaches, the graphical interfaces of which are shown in Fig. 10. The final FRET analysis can either be applied on a pixel-by-pixel basis to create a FRET image, in which each pixel contains the FRET efficiency at that location, or to calculate the FRET efficiency within regions of interest. The plugin is available from the authors or through the ImageJ plugin repository. A detailed user guide is provided on our website ([karri.anu.edu.au](http://karri.anu.edu.au)), so we give only a brief description of the use of the ExEm unmixing program here.

For each sample, the emission spectra needs to be collected using a spectral detector for at least two excitation wavelengths. These images are combined into stacks, ordered such that all the emission wavelengths for one excitation are found in sequence before moving to the next excitation wavelength. Reference spectra can be automatically generated once regions of interest in either the donor only or acceptor only image have been drawn using the ImageJ ROI manager. The spectral response function can also be automatically created from data from a FRET sample once the number of intensity bins to be used in generating the response function has been specified and ROIs have been drawn



**Fig. 10** Screen shots of the graphical interfaces for the ImageJ plugin Fretty for FRET analysis of microscope images using ExEm (a) and Em (b) spectral unmixing.

around the foreground regions of the image. The reference spectra and spectral response function can be saved for later use (ideally a new set should be created each time new FRET data are collected).

Analysis of FRET images is straightforward once a stack containing data from a FRET sample has been created. If creating a FRET image, then the transfer efficiency will only be calculated for pixels whose intensity is above a designated threshold to avoid background regions showing up in the image. In this case, no ROIs need to be drawn and a new image will be generated in which each pixel value represents the FRET efficiency at that position. If calculating FRET in ROIs, then these must first be drawn on the image with the ROI manager, and once the analysis is complete a results table will be generated listing the average FRET efficiency value in each ROI.

## 6 Discussion

A number of recent studies have used spectral unmixing of emission spectra to aid the quantification of FRET. By doing so, they explicitly account for donor spectral bleedthrough, but acceptor cross excitation has to be accounted for through an additional correction. The methods differ in exactly how this correction is determined and each has its strengths. The Em method presented here follows these approaches with close similarities to the corrections of Ecker et al.,<sup>33</sup> and Chen et al.<sup>27</sup> An advantage of both our method and that of Chen et al. is that they can account for nonlinear instrument responses

that otherwise yield different FRET efficiencies for cells of different intensities. In addition, unlike the method of Thaler et al.<sup>26</sup> the concentrations of the reference samples need not be known.

The ExEm method described here involves the unmixing of both excitation and emission spectra and so directly accounts for both donor spectral bleedthrough and acceptor cross excitation without the need for additional corrections. An advantage of this approach is that the presence of FRET can be unambiguously determined by the appearance of a third peak in the spectra, which does not overlap the donor only or acceptor only spectra. While we initially expected that the ExEm approach would require the use of a large number of different excitation wavelengths, we found that better results were obtained with this method than with Em spectral unmixing when using only two excitation wavelengths. ExEm spectral unmixing is considerably more elegant than the Em approach for quantifying FRET efficiencies, as it does not require specific cross-excitation corrections and recognises FRET by the presence of a spectral peak that does not overlap either the donor or acceptor signals. In hindsight, it is not surprising that it outperforms the Em approach when given the same data. The availability of multiple lasers, tunable gratings with arc lamp excitation, or tunable white lasers will make the simpler ExEm approach even more appealing in the future, as the use of additional excitation wavelengths will make the approach even more accurate.

A particularly promising future application of the ExEm method described here is in studies with more than two

fluorophores present, such as when examining the interactions of three different proteins. The unmixing of both excitation and emission wavelengths is particularly helpful for separating the signals from multiple overlapping fluorophores. This could be useful, for example, when FRET is simultaneously taking place between different types of fluorophores, such as in three-color FRET where the acceptor for transfer from another fluorophore can act as a donor for transfer to a third fluorophore.<sup>38–43</sup> Unmixing of both the excitation and emission wavelengths would allow for robust analysis without making any assumptions about how each excitation wavelength excites each fluorophore type.

One issue with the methods described here is that while the contributions from free acceptors can be distinguished from those involved in DA pairs undergoing FRET, free donors cannot be identified and this can compromise FRET values.<sup>44,45</sup> Approaches to overcome this include adding additional data such as lifetime measurements<sup>44</sup> or additional calibration.<sup>30,45</sup> FRET is being ever more commonly utilized for examining protein-protein interactions, the composition of macromolecular complexes, examining protein structure and conformational changes, and as an indicator of biochemical events.<sup>6</sup> The methods and user interfaces described here add to the arsenal of scientists needing to accurately quantify FRET efficiencies, and we envisage them being useful for a range of applications in both microscopy and spectrometry.

### Acknowledgments

The authors thank the Australian Research Council for funding, including a Future Fellowship (FT100100271) to Kevin Pflieger, and iVEC for the provision of a research internship to John Hannagan. We thank Srinagesh V. Koushik and Steven S. Vogel for kindly making plasmids for the FRET constructs available to us. The authors acknowledge the facilities, and the scientific and technical assistance of the Australian Microscopy & Microanalysis Research Facility at the Centre for Microscopy, Characterisation & Analysis, The University of Western Australia, a facility funded by the University, State and Commonwealth Governments. The ImageJ plugins and user guide are available at: <http://karri.anu.edu.au/corry/software.html>.

### References

- J. R. Lakowicz et al., "Conformational distributions of melittin in water/methanol mixtures from frequency-domain measurements of nonradiative energy transfer," *Biophys. Chem.* **36**(2), 99–115 (1990).
- E. R. Chapman et al., "Fluorescence energy transfer analysis of calmodulin-peptide complexes," *Biochemistry* **31**(51), 12819–12825 (1992).
- T. Heyduk, "Measuring protein conformational changes by FRET/LRET," *Curr. Opin. Biotechnol.* **13**(4), 292–296 (2002).
- M. A. Hink, T. Bisselin, and A. J. Visser, "Imaging protein-protein interactions in living cells," *Plant Mol. Biol.* **50**(6), 871–883 (2002).
- G. Bunt and F. S. Wouters, "Visualization of molecular activities inside living cells with fluorescent labels," *Int. Rev. Cytol.* **237**, 205–277 (2004).
- Y. Sun et al., "FRET microscopy in 2010: the legacy of Theodor Förster on the 100th anniversary of his birth," *Chem. Phys. Chem.* **12**(3), 462–474 (2011).
- T. Förster, "Transfer mechanisms of electronic excitation," *Discuss. Faraday Soc.* **27**, 7–17 (1959).
- R. M. Clegg and P. C. Schneider, *Fluorescence Lifetime-Resolved Imaging Microscopy: A General Description of Lifetime-Resolved Imaging Measurements*, pp. 15–33, Plenum Press, New York (1996).
- A. G. Harpur, F. S. Wouters, and P. I. Bastiaens, "Imaging FRET between spectrally similar GFP molecules in single cells," *Nat. Biotechnol.* **19**(2), 167–169 (2001).
- Y. Chen, J. D. Mills, and A. Periasamy, "Protein localization in living cells and tissues using FRET and FLIM," *Differentiation* **71**(9–10), 528–541 (2003).
- M. A. Rizzo and D. W. Piston, "High-contrast imaging of fluorescent protein FRET by fluorescence polarization microscopy," *Biophys. J.* **88**(2), L14–L16 (2005).
- D. W. Piston and M. A. Rizzo, "FRET by fluorescence polarization microscopy," *Meth. Cell Biol.* **85**, 415–430 (2008).
- T. Zal and N. R. Gascoigne, "Photobleaching-corrected FRET efficiency imaging of live cells," *Biophys. J.* **86**(6), 3923–3939 (2004).
- E. B. van Munster et al., "Fluorescence resonance energy transfer (FRET) measurement by gradual acceptor photobleaching," *J. Microsc.* **218**(Pt. 3), 253–262 (2005).
- A. K. Kenworthy, *Photobleaching FRET Microscopy*, pp. 146–164, Oxford University Press, New York (2005).
- B. Corry et al., "An improved open channel structure of mscl determined from FRET confocal microscopy and simulation," *J. Gen. Physiol.* **136**(4), 483–494 (2010).
- G. W. Gordon et al., "Quantitative fluorescence resonance energy transfer measurements using fluorescence microscopy," *Biophys. J.* **74**(5), 2702–2713 (1998).
- Z. Xia and Y. Liu, "Reliable and global measurement of fluorescence resonance energy transfer using fluorescence microscopes," *Biophys. J.* **81**(4), 2395–2402 (2001).
- Y. Chen, M. Elangovan, and A. Periasamy, *FRET Data Analysis: The Algorithm*, pp. 146–164, Oxford University Press, New York (2005).
- R. M. Clegg, "Fluorescence resonance energy-transfer and nucleic acids," *Meth. Enzymol.* **211**, 353–388 (1992).
- F. J. M. van Kuppeveld et al., "Homomultimerization of the coxsackievirus 2B protein in living cells visualized by fluorescence resonance energy transfer microscopy," *J. Virol.* **76**(18), 9446–9456 (2002).
- C. M. S. Croix et al., "Nitric oxide-induced modification of protein thiolate clusters as determined by spectral fluorescence resonance energy transfer in live endothelial cells," *Free Radical Biol. Med.* **37**(6), 785–792 (2004).
- T. Zimmermann et al., "Spectral imaging and linear un-mixing enables improved FRET efficiency with a novel GFP2-YFP FRET pair," *FEBS Lett.* **531**(2), 245–249 (2002).
- Y. Gu et al., "Quantitative fluorescence resonance energy transfer (FRET) measurement with acceptor photobleaching and spectral unmixing," *J. Microsc.* **215**(2), 162–173 (2004).
- V. Raicu et al., "Protein interaction quantified *in vivo* by spectrally resolved fluorescence resonance energy transfer," *Biochem. J.* **385**(Pt. 1), 265–277 (2005).
- C. Thaler et al., "Quantitative multiphoton spectral imaging and its use for measuring resonance energy transfer," *Biophys. J.* **89**(4), 2736–2749 (2005).
- Y. Chen et al., "Characterization of spectral FRET imaging microscopy for monitoring nuclear protein interactions," *J. Microsc.* **228**(Pt. 2), 139–152 (2007).
- D. Megias et al., "Novel lambda FRET spectral confocal microscopy imaging method," *Microsc. Res. Technol.* **72**(1), 1–11 (2009).
- C. Batters, H. Zhu, and J. E. Sale, "Visualisation of PCNA monoubiquitination *in vivo* by single pass spectral imaging FRET microscopy," *PLoS One* **5**(2), e9008 (2010).
- S. Levy et al., "SpRET: Highly sensitive and reliable spectral measurement of absolute FRET efficiency," *Microsc. Microanal.* **17**(2), 176–190 (2011).
- T. Zimmermann, J. Rietdorf, and R. Pepperkok, "Spectral imaging and its applications in live cell microscopy," *FEBS Lett.* **546**(1), 87–92 (2003).
- J. Yuan et al., "Quantitative FRET measurement by high-speed fluorescence excitation and emission spectrometer," *Opt. Express* **18**(18), 18839–18851 (2010).
- R. C. Ecker et al., "Application of spectral imaging microscopy in cytomics and fluorescence resonance energy transfer (FRET) analysis," *Cytometry A* **59**(2), 172–181 (2004).
- S. V. Koushik et al., "Cerulean, Venus, and VenusY67C FRET reference standards," *Biophys. J.* **91**(12), L99–L101 (2006).
- H. Chen et al., "Measurement of FRET efficiency and ratio of donor to acceptor concentration in living cells," *Biophys. J.* **91**(5), L39–L41 (2006).
- A. K. Kenworthy and M. Edidin, "Distribution of a glycosylphosphatidylinositol-anchored protein at the apical surface of MDCK cells examined at a resolution of <100 Å using imaging fluorescence resonance energy transfer," *J. Cell Biol.* **142**(1), 69–84 (1998).

37. H. Wallrabe et al., "Confocal FRET microscopy to measure clustering of ligand-receptor complexes in endocytic membranes," *Biophys. J.* **85**(1), 559–571 (2003).
38. M. Heilemann et al., "Multistep energy transfer in single molecular photonic wires," *J. Am. Chem. Soc.* **126**(21), 6514–6515 (2004).
39. S. Hohng, C. Joo, and T. Ha, "Single-molecule three-color FRET," *Biophys. J.* **87**(2), 1328–1337 (2004).
40. E. Galperin, V. V. Verkhusha, and A. Sorkin, "Three-chromophore FRET microscopy to analyze multiprotein interactions in living cells," *Nat. Methods* **1**(3), 209–217 (2004).
41. J. P. Clamme and A. A. Deniz, "Three-color single-molecule fluorescence resonance energy transfer," *ChemPhysChem.* **6**(1), 74–77 (2005).
42. N. K. Lee et al., "Three-color alternating-laser excitation of single molecules: Monitoring multiple interactions and distances," *Biophys. J.* **92**(1), 303–312 (2007).
43. Y. Sun et al., "Three-color spectral FRET microscopy localizes three interacting proteins in living cells," *Biophys. J.* **99**(4), 1274–1283 (2010).
44. R. A. Neher and E. Neher, "Applying spectral fingerprinting to the analysis of FRET images," *Micros. Res. Tech.* **64**(2), 185–195 (2004).
45. J. Włodarczyk et al., "Analysis of FRET signals in the presence of free donors and acceptors," *Biophys. J.* **94**(3), 986–1000 (2008).