

## Should We Pay for Ecosystem Service Outputs, Inputs or Both?

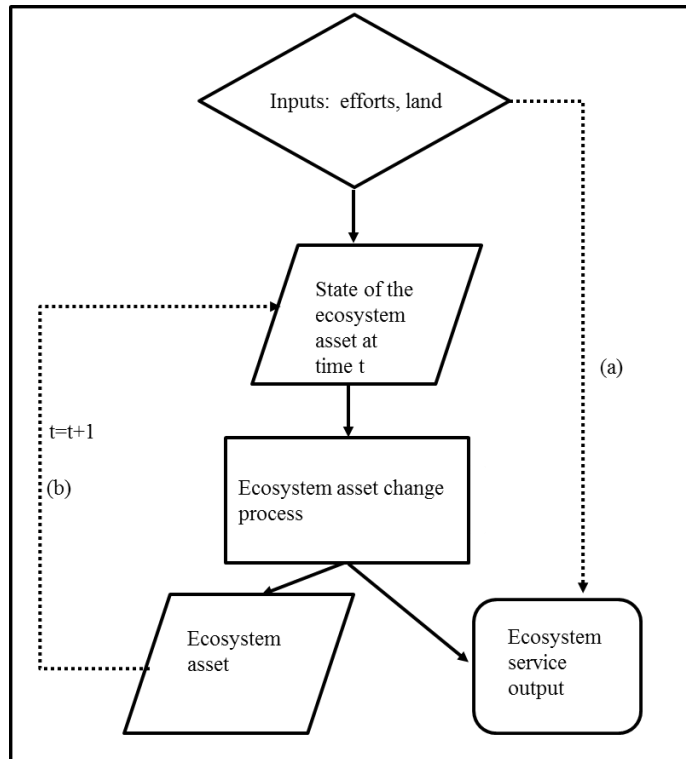
### Abstract

*Payments for ecosystem service outputs have recently become a popular policy prescription for a range of agri-environmental schemes. The focus of this paper is on the choice of instruments in contracts to incentivise the provision of ecosystem service outputs from farms. The farmer is better informed than the regulator in terms of hidden information about costs and hidden-actions relating to effort. Results show that with perfect information, the regulator can contract equivalently on inputs or outputs. With hidden information, input-based contracts are more cost effective at reducing the informational rent related to adverse selection than output-based contracts. Mixed contracts are also cost-effective, especially where one input is not observable. Such contracts allow the regulator to target variables that are “costly-to-fake” as opposed to those prone to moral hazard such as effort. Further results are given for fixed price contracts and input-based contracts with moral hazard. The model is extended to include a discussion of repeated contracting and the scope that exists for the regulator to benefit from information revealed by the initial choice of contract. Results are illustrated with a case study of contracting with farmers to protect high biodiversity native vegetation that also provides a number of socially-valuable ecosystem services.*

# 1 Introduction

The provision of ecosystem services and biodiversity conservation may be seen in some environments as a process of accumulating and maintaining the natural capital assets that support ecosystem service (ES) output. It is an investment decision that requires diverting land, labour and man-made capital to appreciate an ecosystem asset, which in turn provides an ES output. For instance, in the case study discussed later in this paper, the ecosystem asset is an area of endangered Australian native vegetation that hosts unique biodiversity but also provides ecosystem services including regulating saline ground water and reducing soil erosion. Without sufficient land and effort allocated to its protection, the state of native vegetation depreciates. If the vegetation remnant is recruited into a conservation management scheme then both the area and its condition can appreciate, increasing the shadow value of this asset. The definition of an ES used here is consistent with Bateman et al (2011), Barbier (2009) and Mäler et al. (2009). To quote Bateman et al. (2011, p180) “*the level of ecosystem service ‘harvested’ within any given period can be thought of as a ‘flow’ extracted from an underlying ‘stock’ of ecosystem asset....*”.

The process described is characterised by the flowchart in Figure 1. A land area has an ecosystem asset of a given state as measured by a metric. This is combined with input factors land and conservation effort, and through an ecosystem asset change process provides an ES output. The process is dynamic, since the ecosystem asset changes through time. Contracting with owners and/or managers of the asset can be used at a number of stages in this process: such contracts can specify the inputs employed by the land manager, the state of the ecosystem asset, or the ES output. A contract can specify these variables directly as a requirement for a specific quantity supplied, or can incentivise their supply through prices paid to the land manager or owner. In the economic model developed in Section 3, this relationship is simplified so that the value of the ES output is a simple linear function of the state of the ecosystem asset. Inputs change the ecosystem asset’s condition over time.



*Note: the diagram indicates input decisions with a diamond; a state variable (ecosystem asset) with a rhomboid, a process (the ecosystem change process) with a rectangle and a flow variable ecosystem services as round–cornered rectangle.*

**Figure 1 Conceptual model linking ecosystem outputs, inputs and assets**

Since the objective of Payment for Ecosystem Service (PES) schemes is to increase the ES output, an obvious question is whether payments should be targeted at outputs (such as better water quality) rather than at the management inputs or actions which change ES outputs (such as changes in fertiliser use: Hanley et al., 2012). Most current agri-environmental policy in the European Union is targeted at management actions or inputs, typically because these are thought easier to observe, and because the ES output from a given area of land is determined by a wide range of factors, only some of which are under the direct control of the landowner. This means that output-based contracts are often riskier for the landowner than input-based contracts (Burton and Schwarz, 2013). Moreover, it may be more expensive for the regulator to monitor ES outputs or ecosystem assets compared to inputs.

However, output-based payments have advantages (Gibbons *et al.*, 2011). For instance, if essential inputs are hidden (or expensive for the regulator to observe), then paying for outputs may be more efficient. Moreover, farmers may hold private information on the best methods for investing in the ecosystem asset and producing the ES: these cannot be easily specified in an actions-based contract. Output-based payments encourage land managers to make use of this information to produce ES outputs.

One economic approach to the design of voluntary agri-environmental schemes is based around mechanism design, structuring contracts to induce a dominant-strategy Bayesian equilibrium in games of incomplete information (Laffont and Tirole, 1993). This mechanism is applied to define a menu of contracts that is designed to separate “types” of supplier by voluntary self-selection, as a means of reducing information rents. We follow this approach in the model set out in section 3.

The rest of the paper is organised as follows. Section 2 provides a brief literature review. Section 3 presents the models. The first subsection gives the derivation of the compliance cost. The next sets out the first-best perfect information solution. The hidden information contracting problem is analysed using input, output and mixed contracts. An alternative price-based contract is then analysed which is characterised as one approach to overcoming moral hazard. Moral hazard is also addressed directly as a problem of allocating monitoring resources. The last subsection considers the input-based contract over two periods with the possibility of re-contracting. Section 4 gives an empirical example. Section 5 concludes and identifies areas for further research.

## **2 Literature Review**

Weitzman (1974, p477) stated that the “..average economist in the Western marginalist tradition has at least a vague preference toward indirect control by prices, just as the typical non-economist leans toward the direct regulation of quantities.” . He demonstrates an equivalence, under certain restrictive assumptions, between setting the price of a good or service and leaving the firm to maximize profit by adjusting output; or fixing output and leaving the firm to minimize costs. He then states that any advantage of one policy over

another must “ be due to inadequate information or uncertainty.” This paper, along with the literature on procurement and contracting (Laffont and Tirole, 1993; Laffont and Martimort, 2002) has led to a number of papers applying mechanism design to agri-environmental policies (Wu and Babcock, 1996 and Moxey et al., 1999; Ferraro, 2008; Hanley et al., 2012 and Miteva et al., (2012).

Recent papers that have specifically looked at the optimal selection of alternative policy mechanisms include Melkonyan and Taylor (2013). They show in relation to policy for US rangeland that, given informational asymmetries between ranchers and regulators, outcome-based payments are a first-best policy when regulators can perfectly monitor the ecological condition of the ranch. Where monitoring is imperfect, input regulation and cost-sharing or taxation may dominate performance regulation. Anthon et al. (2010) consider the optimal design of PES-type contracts to private landowners under asymmetric information. They find foresters who are likely to achieve a higher level of conservation should be offered output-based contracts. Derissen and Quaas (2013) extend a model by Zabel and Roe (2009) to develop a mixed output-based and input-based contracting approach to a problem where the farmer is better informed about environmental performance than the regulator. Their model addresses asymmetric information relating to the marginal productivity of the “ecosystem production function”. Under such conditions, they show that a mixed contract on inputs and output is preferred.

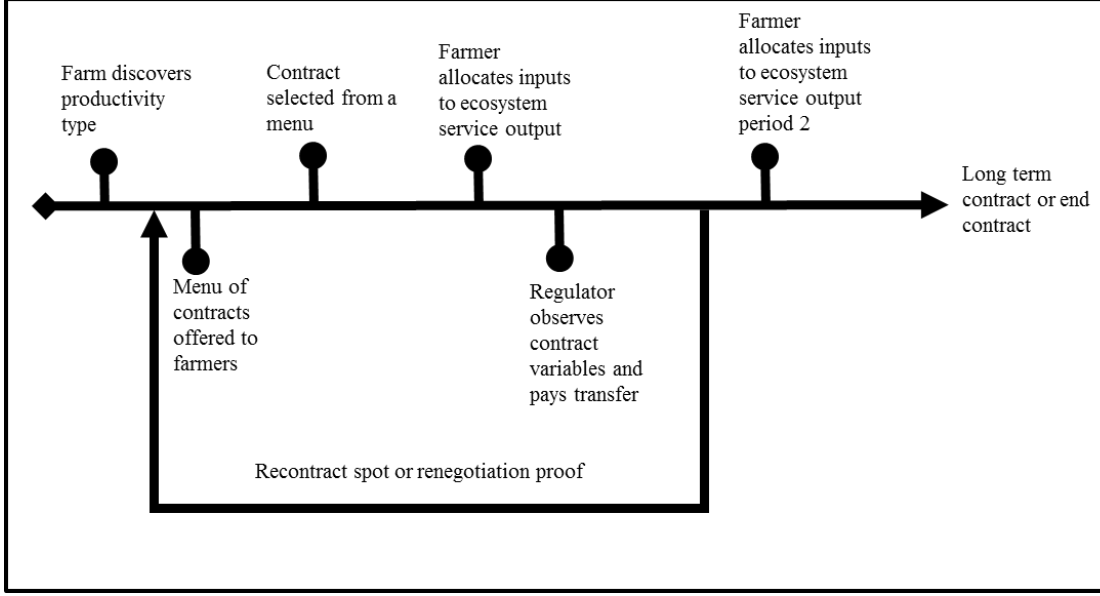
Dynamic contracting, commitment and renegotiation is critical to the long term protection of ecosystem assets, as positive change is often gradual and degradation rapid and irreversible. However, there has been a limited application of principal-agent models from general economics (Laffont and Tirole, 1988, 1990) to long term contracting for ecosystem services. The key issues in this literature (Rey and Salanie, 1990 and 1996) are the role of commitment by the regulator to set up separating contracts and the use of spot contracts as alternatives to long term contracts. The contribution of this paper is to take a general procurement model due to Laffont and Tirole (1993) and modify it in a way that relates more closely to the realities of ES output contracts. In particular, we consider a situation in which there are two inputs and a single ES output related by an ecosystem production function. Further, the farmer is represented as investing in an ecosystem asset as essential input into ES output. These

generalisations allow us to explore the role of differentiated transactions costs related to the monitoring of contract variables. These issues are reviewed by reference initially to a two-type static model, and then to a two-period, two-type dynamic model.

### **3 The Model**

This section sets up a general agri-environmental contract for providing ecosystem services, and then explores aspects of the model to assess when payment for ecosystem output or payment for ecosystem inputs is optimal. Assume that there are just two representative farmer types that are able to provide an ES, the supply of which depends on how land is managed in a region. These farmer types differ according to their agricultural productivity, information on which may be hidden from the regulator. Thus, there is hidden variation in the opportunity costs of providing ecosystem inputs since the ES output requires the sacrifice of inputs used to produce profitable crops. Farmers combine land and effort to invest in an ecosystem asset that in turn provides an ES output. The benefits can be measured as an ecosystem metric, where the changes in the metric can then be valued. The contract timing for a general problem, including repeated contracting, is given in Figure 2.

Aspects of the standard model that are explored here include the number of inputs, farm types and information. The standard principal-agent model for procurement, for instance Laffont and Martimort (2002, Chapter 3), typically has a single input variable “effort”. This simplification is questionable when there are multiple inputs used to produce an ES. In our model set-up, one input is cheaply observable and another is not. If there are two inputs, then the farm’s type may relate to land or effort productivity, the cost of producing ES output, or behavioural parameters such as risk aversion and time preference. The standard model does not include the possibility that the regulator could select to monitor another variable – such as ES output - as a way of improving the cost effectiveness of a contract.



**Figure 2 Contract timings**

### 3.1 Compliance costs

The costs of engaging in providing an ecosystem service are internal to the farm business in the sense that the farmer allocates resources such as land and effort to maintain the ecosystem asset. To represent this, we define a restricted profit function (Lau, 1976) with fixed land and effort as  $\pi^0 = \pi(\theta_i^x, \theta_i^e, p^a, w^a, \bar{x}_i^a, \bar{e}_i^a)$ , where  $\pi^0$  is the baseline agricultural profit. Here,  $\theta$ , is the farmer's type (defined on either land productivity,  $\theta_i^x$ , or effort productivity,  $\theta_i^e$ , or both),  $p^a$  are crop output prices,  $w^a$  is a vector of price for variable inputs such as fertilizer, and  $\bar{x}_i^a$  and  $\bar{e}_i^a$  are respectively land and effort allocated to agriculture. The productivity parameters and market prices are assumed fixed in all time periods of the model. Each farmer can identify the optimal profit from farm production and this allows her to make a profit-maximising choice over other variable inputs such as pesticides and fertilizers. The restricted profit function provides a way of describing a *compliance cost function* where resources  $x_i$  (land) and  $e_i$  (effort) are re-allocated from crop production to conservation:

$$c(\theta_i^x, \theta_i^e, x_{ii}, e_{ii}) = \pi^0 - \pi(\theta_i^x, \theta_i^e, p^a, w^a, \bar{x}_{ii}^a - x_{ii}, \bar{e}_{ii}^a - e_{ii}). \quad (1)$$

Compliance cost is thus baseline profit minus profit with land and effort allocated to producing ES output. To make the analysis tractable we assume that the compliance cost function (1) is approximated by the separable quasi convex function:

$$c(\theta_i^x, \theta_i^e, x_{ii}, e_{ii}) = c_x(\theta_i^x, x_{ii}) + c_e(\theta_i^e, e_{ii}). \quad (2)$$

Cost functions are strictly increasing in the type parameters.

### 3.2 General contracting problem

This section sets up the general contracting problem as a basis for considering the potential for different contract designs. The risk neutral regulator maximises a social welfare function:

$$\underset{x_{ii}, e_{ii}, f_{ii}, p_{ii}}{\text{Maximum}} \sum_t \sum_i \delta_t \phi_i \left\{ \begin{array}{l} v g(x_{ii}, e_{ii}, y_{t-1,i}) - c_e(\theta_i^e, e_{ii}) - c_x(\theta_i^x, x_{ii}) \\ -(1+\lambda)c_m(e_{ii}, x_{ii}) - \lambda(f_{ii} + p_{ii}y_{ii}) \end{array} \right\}. \quad (3)$$

The term  $\delta_t$  is the discount factor for period  $t$  and  $\phi_i$  is the probability of a firm being of type  $i$ .<sup>1</sup> The term  $v$  indicates the economic value per unit of increase in the ecosystem asset. The regulator maximizes the expected present value of the ES output given by the difference equation that describes the ecosystem ‘production function’ or asset change process  $y_{ii} = g(x_{ii}, e_{ii}, y_{t-1,i})$  for farm type  $i$ . The ES output depends directly on the current level of the ecosystem asset. The term  $c_m(e_{ii}, x_{ii})$  is the cost of compliance monitoring. Policies can include direct contracts for land, effort or output. The farmer receives payments either as lump-sum transfers  $f_{ii}$  and/or as a per-unit-of-output payment  $p_{ii}y_{ii}$ . In the social welfare function, transfers are weighted by the shadow price of public funds  $0 \leq \lambda \leq 1$ . This term accounts for the cost of raising tax revenue due to the deadweight loss of taxation (Campbell and Bond, 1997).

---

<sup>1</sup> Types are defined by a combination of productivity and behavioural parameters. Below we restrict attention to just two type models and only one type parameter distinguishing between firms.



Assuming compliance so that the problem for the farmer is deterministic, the farmer's objective function is

$$J_{ii} = \underset{e_{ii}, x_{ii}}{\text{Maximize}} \sum_t \delta^t (p_{ii} \tilde{y}_{ii} + f_{ii} - c_e(\theta_i^e, e_{ii}) - c_x(\theta_i^x, x_{ii})). \quad (4)$$

The profit to the farmer when they truthfully reveal their type is indicated by the subscripts  $ii$ . The participation constraint is:

$$J_{ii} \geq \bar{J}_i \quad (5)$$

where  $\bar{J}_i$  is the farm's reservation profit. The incentive compatibility constraint is:

$$J_{ii} \geq J_{ij} \quad \forall i, j. \quad (6)$$

The first subscript is the farm's type whilst the second subscript is the farm's declared type when selecting from a menu of contracts. The regulator acts as a Stackelberg leader (Baron, 1985) in optimizing (3) constrained by (4), (5) and (6). In the analysis we start with a simple model and develop a set of results for aspects of the general model.

### 3.3 Static first-best input and output-based contracts

*Assumptions A1. The regulator maximizes the social-welfare function, and is risk neutral. They can also estimate,  $v, \phi_i$ , and the ecosystem production function  $y_{ii} = g(x_{ii}, e_{ii}, y_0)$ . The regulator observes the farm types. Farm types are either high land productivity  $h$  or low land productivity  $l$  types, with  $\theta_h^x > \theta_l^x$ . Each farm has an identical ecosystem asset at the start of the period and thus this term can be dropped from the production function along with the time subscript  $y_i = g(x_i, e_i)$ . The effort productivity  $\theta^e$  is the same for both farm types, and farmers are risk neutral.*

If the regulator contracts on effort and land allocated to ES output, they maximize:

$$\underset{x_i, e_i, f_i}{\text{Maximum}} \{vg(x_i, e_i) - c_e(\theta^e, e_i) - c_x(\theta_i^x, x_i)\} - \lambda f_i \quad i \in l, h \quad (7)$$

subject to the individual rationality or participation constraint:

$$f_i - (c_e(\theta^e, e_i) + c_x(\theta_i^x, x_i)) \geq 0 \quad i \in l, h \quad (8)$$

The optimal internal solution is:

$$vg_{e_i} = (1 + \lambda)c'_e(\theta^e, e_i); \quad vg_{x_i} = (1 + \lambda)c'_x(\theta_i^x, x_i) \quad i \in l, h \quad (9)$$

The shadow cost of public funds increases the marginal cost of input allocations. The first-best policy is least cost as (9) implies the condition for cost minimization:

$$\frac{g_{e_i}}{g_{x_i}} = \frac{c'_e(\theta^e, e_i)}{c'_x(\theta_i^x, x_i)} \quad i \in l, h \quad (10)$$

If instead the regulator contracts only on ES output  $y_i$ , the firm, as the residual claimant, produces the contracted output at a minimum cost. Define a cost function as:

$$c_y(\theta_i, y_i) = \underset{z \geq 0}{\text{Minimum}} [c_e(\theta^e, e_i) + c_x(\theta_i^x, x_i) : z_i \in Z(y_i)] \quad i \in l, h \quad (11)$$

where  $z$  is a vector of inputs in the ES and  $Z(y_i) = \{z_i : g(z_i, y_{0i}) \geq y_i\}$  is a convex input requirement set for the ES output and  $\theta_i = [\theta^e, \theta_i^x]$ . The modified objective function for the regulator is:

$$\underset{y_i, f_i}{\text{Maximum}} \{vy_i - c_y(\theta_i, y_i)\} - \lambda f_i \quad i \in l, h \quad (12)$$

and the participation constraints:

$$f_i - c_y(\theta_i, y_i) \geq 0 \quad i \in l, h \quad (13)$$

The shadow cost of public funds,  $\lambda$ , increases the marginal cost of the ES output. The input-based and outcome-based contracts are identical as, by definition, the cost function (11) implies cost minimization

$$v = (1 + \lambda)c'_y(\theta_i, y_i). \quad (14)$$

The input-based contract is also cost minimizing as (10) implies a cost minimizing solution.

The first-best contracts are illustrated in Figure 3. The regulator would offer the low-cost farm type (*l-type*) the contract at *a* as either an input-based or an outcome-based contract, and the high-cost farm type (*h-type*) the contract at *b*. For an input contract the regulator, as the residual claimant, sets the contracted levels of effort and land to minimize the transfer payment related to a level of output and thus maximize the social welfare function. For the output contract, farmers as residual claimants select the cost minimizing levels of input to maximize their profit.

*Result 1. The first best input and output contract are equivalent and lead to the same social welfare, ES output and input mix.*

### 3.4 Adverse selection with an input-based contract

*Assumptions A2. Assumptions A1 hold except that the regulator does not observe the land productivity parameter directly, but has a subjective estimate of the probability  $\phi_i$  of each farm type. Effort productivity is the same for both types.*

The objective function is modified to give the expected social welfare function:

$$\text{Maximum}_{x_i, e_i, f_i} \sum_i \phi_i \{vg(x_i, e_i) - c_e(\theta^e, e_i) - c_x(\theta_i^x, x_i) - \lambda f_i\} \quad i \in l, h \quad (15)$$

where  $\phi_i$  is the probability of a farm being of type *i*. Thus the objective function (15) is maximised subject to the participation constraints (8) and incentive compatibility (*IC-i*) constraints:

$$f_i - c_e(\theta^e, e_i) - c_x(\theta_i^x, x_i) \geq f_j - c_e(\theta^e, e_j) - c_x(\theta_i^x, x_j) \quad i, j = l, h; i \neq j \quad (16)$$

The assumptions of strictly convex cost functions and the single-crossing property of the incentive compatibility constraints ensure that the individual rationality for the *h-type* (*IR-h*) and incentive compatibility constraint for the low cost (*IC-l*) type are the only binding constraints (see Appendix 1). The *l-type* earns a rent and the *h-type* has a zero rent. The rent is defined at the optimal solution  $\{\hat{e}_i, \hat{x}_i\}$  by  $\hat{r}_i = \hat{f}_i - c_e(\theta^e, \hat{e}_i) - c_x(\theta_i^x, \hat{x}_i)$ . With these additional restrictions, the objective function (15) can be rewritten as:

$$\text{Maximum}_{x_i, e_i, f_i} \sum_i \phi_i \{vg(x_i, e_i) - (1 + \lambda)(c_e(\theta^e, e_i) + c_x(\theta_i^x, x_i) - \lambda r_i)\} \quad i \in l, h.$$

By assumption rent for the *h-type* farmer is zero and from the binding (*IC-l*):

$$r_l = c_e(\theta^e, e_h) + c_x(\theta_h^x, x_h) - c_e(\theta^e, e_l) - c_x(\theta_l^x, x_h) = c_x(\theta_h^x, x_h) - c_x(\theta_l^x, x_h).$$

On this basis the optimal internal solution gives two first-order conditions, the first for the *l-type*:

$$vg_{e_l} = (1 + \lambda)c'_e(\theta^e, e_l); \quad vg_{x_l} = (1 + \lambda)c'_x(\theta_l^x, x_l) \quad (17)$$

(thus the *l-type* is offered the first-best solution) and the second for the *h-type*:

$$vg_{e_h} = (1 + \lambda)c'_e(\theta^e, e_h); \quad vg_{x_h} = (1 + \lambda)c'_x(\theta_h^x, x_h) + \frac{\lambda\phi_l}{\phi_h}(c'_x(\theta_h^x, x_h) - c'_x(\theta_l^x, x_h)). \quad (18)$$

The second term on the right-hand side of the first-order condition for land is positive by assumption and measures the marginal information rents associated with increasing the input requirements in the contract for the *h-type*. This term also means that the input requirement is no longer resource cost minimizing for the given ES output:

$$\frac{g_{e_h}}{g_{x_h}} = \frac{c'_e(\theta^e, e_h)}{c'_x(\theta_h^x, x_h) + \frac{\lambda\phi_l}{(1 + \lambda)\phi_h}(c'_x(\theta_h^x, x_h) - c'_x(\theta_l^x, x_h))} < \frac{c'_e(\theta^e, e_h)}{c'_x(\theta_h^x, x_h)} \quad (19)$$

This indicates that the land to effort ratio for the *h-type* is reduced due to the additional marginal information rent.

*Result 2* The *l-type* is offered the first best input level, but is paid an information rent in excess of the compliance cost. The *h-type* is offered a contract with a lower level of land and effort, and their information rent is zero.

### 3.5 Adverse selection with an output-based contract

*Assumption A3.* As for A2 except the regulator contracts on the ES output.

From an output contract perspective, the problem is re-stated as follows:

$$\text{Maximum}_{y_i, f_i} \sum_i \phi_i \{vy_i - c_y(\theta_i, y_i) - \lambda f_i\} \quad i \in l, h. \quad (20)$$

Subject to the individual rationality constraint:

$$f_i - c_y(\theta_i, y_i) \geq 0 \quad i \in l, h \quad (21)$$

and incentive compatibility constraints:

$$f_i - c_y(\theta_i, y_i) \geq f_j - c_y(\theta_j, y_j) \quad i, j = l, h; i \neq j. \quad (22)$$

The first order condition for the *l-type* is:

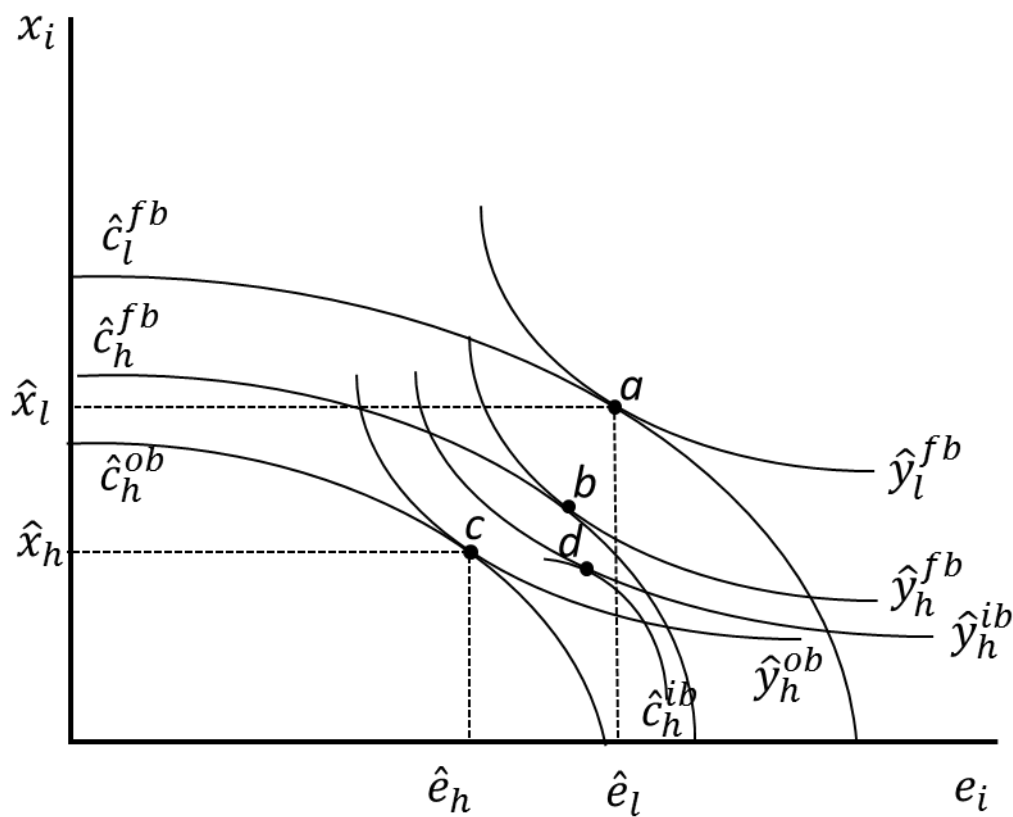
$$v = (1 + \lambda)c'_y(\theta_l, y_l). \quad (23)$$

For the *h-type* the output is reduced compared to the first-best:

$$v = (1 + \lambda)c'_y(\theta_h, y_h) + \frac{\lambda\phi_l}{\phi_h}(c'_y(\theta_h, y_h) - c'_y(\theta_l, y_h)). \quad (24)$$

The first-order condition above establishes a point of difference between input-based and output-based contracts. Condition (24) indicates a reduction in the ES output compared to the

first-best, but, as the farm is the residual claimant for any cost reductions, a profit maximizing farmer produces the contracted ES output at a minimum cost (one of the claimed advantages of outcome-based contracts noted in the introduction). This contrasts with (18) where the inputs are fixed by the regulator and the *h*-type can be induced to select an input combination which has a higher proportion of effort than the cost minimizing solution.



Note: 1.  $\hat{y}_h^{ib}$ , indicates the isoquant for the adverse selection problem input-based (ib) 2.  $\hat{y}_h^{ob}$  indicates outcome-based (ob). 3. The isocost curve  $\hat{c}_h^{ib}$  is for adverse selection input-based and includes the informational rent. 4. The isocost  $\hat{c}_h^{ob}$  is for the outcome-based contract.

**Figure 3 Input-based and output-based contracts**

All *l*-type are at *a*. The contract at *b* is the first-best for either input-based or output-based arrangements for the *h*-type. Contract *c* is the output-based contract and *d* the input-based mechanism design contract. The output-based contract is suboptimal, third-best, because it

constrains the solution to be at the cost minimizing combination of inputs, and the total cost (resource cost plus information rent) of the ES output is not minimized due to the information rent.

*Result 3. With adverse selection, an input contract is weakly preferred by the regulator to an output contract, as it solves the mechanism design problem at least cost. This result is equivalent to the result derived by Khalil and Lawaree (1995) for a single input model. Intuitively this result holds trivially because with an input-based solution the regulator can always select the least cost inputs. Restricting the solution to an output-based contract adds an additional constraint and so increases the cost of mechanism design.*

### 3.6 Adverse selection with a mixed contract

*Assumption A4. As in A2, except that the regulator contracts on land and the ES output, but not effort directly. Effort is non-verifiable.*

Instead of contracting directly on effort, a second-best optimal effort is induced by contracting on land and output. Effort is selected by the agent to solve:

$$e_i(\hat{x}_i, \hat{y}_i) = \operatorname{argmin}[c_e(\theta^e, e_i); \hat{y}_i = g(\hat{x}_i, e_i), x_i = \hat{x}_i]. \quad (25)$$

where  $\hat{x}_i$  and  $\hat{y}_i$  are the contracted levels. Substituting the effort function  $e_i(x_i, y_i)$  into the regulator's objective function:<sup>2</sup>

$$\operatorname{Maximum}_{x_i, y_i, f_i} \sum_i \phi_i \left\{ v g(x_i, e_i(x_i, y_i)) - c_e(\theta^e, e_i(x_i, y_i)) - c_x(\theta_i^x, x_i) - \lambda f_i \right\} \quad i \in l, h. \quad (26)$$

The objective function (26) is maximised subject to participation constraints:

---

<sup>2</sup> The existence of this function is easily shown for the production function  $\hat{y}_i = \hat{x}_i^{b_1} e_i^{b_2}$ , rearranging effort is given by  $e_i(\hat{x}_i, \hat{y}_i) = (\hat{y}_i / \hat{x}_i^{b_1})^{1/b_2}$ .

$$f_i - c_e(\theta^e, e_i(x_i, y_i)) - c_x(\theta_i^x, x_i) \geq 0 \quad i \in l, h. \quad (27)$$

and incentive compatibility constraints:

$$f_i - c_e(\theta^e, e_i(x_i, y_i)) - c_x(\theta_i^x, x_i) \geq f_j - c_e(\theta^e, e_i(x_i, y_i)) - c_x(\theta_i^x, x_i) \quad i, j = l, h; i \neq j \quad (28)$$

The results given in Appendix 2 show that this result is equivalent to the optimal input-based solution. The approach of contracting on variables that are more readily observable can be generalised to other contract settings, but depends on the existence of the function  $e_i(\hat{x}_i, \hat{y}_i)$ , that relates observable variables to unobservable ones. An equivalent version of this result can be derived for the case where the land type is the same, but the effort type is differentiated between producers. This follows as the result does not rely on the observability of effort, only the fact that the verifiable land and output uniquely determine effort.

*Result 4. A mixed contract on output and land is equivalent to the optimal input-based solution to the adverse selection problem.*

A short discussion about possible generalisations of this result is warranted. For a contract to be viable, the regulator must be able to contract on sufficient variables, with active monitoring if required, to ensure production of the ecosystem service. Thus, an input contract is not viable if one essential input is not observable or contractible. In contrast, if an ES output is observable and the contract is based on outputs, this does not depend on input observability as the agent as residual claimant has an incentive to produce the contracted output at least cost. Settings where the extra information rent for a third-best output-based contract is relatively low and the transaction cost of observing inputs is higher than for output, favours output-based contracts.

In adverse selection models with two inputs the hidden type parameter could apply to land or effort productivity or both. In a two-type per input or continuous type setting this would be difficult to analyse. For instance, the two-type model has four types and simplifying results are not readily available. In contrast, depending on the functional forms of cost and



production function, it may be possible to construct an aggregate type that accounts for differences in both land and effort productivity. For instance, if the opportunity cost functions are linear and the ecosystem production function is Cobb-Douglas:

$$\text{Minimize}[\theta_i^x x_i + \theta_i^e e_i; \text{ subject to: } y_i = x_i^{b_1} e_i^{b_2}]$$

the aggregate type measure is given by:  $(\theta_i^x)^{b_1/(b_1+b_2)} (\theta_i^e)^{b_2/(b_1+b_2)}$  (Mas-coll et al. 1995, p142), which is the standard derivation of a cost function from a production function.

### 3.7 Moral hazard

*Assumption A5. As in A2, except that effort is costly to monitor and the regulator can penalize the agent for the level of non-compliance (shirking).*

If a contracted input is unobservable without the regulator engaging in costly monitoring then this creates a moral hazard problem, as the farm may shirk on the contracted level of input use. Within the model developed here, two approaches emerge for dealing with moral hazard; either direct monitoring with penalties, or mixed contracts where the contract specifies “costly-to-fake” variables such as ES output and land use. These are sufficient to ensure an optimal level of the unobservable variable. If, for instance, ES output is costly to measure, then the regulator may have to monitor effort directly and use an input-based contract. The effectiveness of monitoring depends on the capacity of the regulator to charge a fine for applying less effort than contracted (White, 2002). Assume that monitoring frequency lies in a range  $0 \leq m \leq 1$  and has a linear cost  $c^m$  of monitoring. The fine per unit of effort undersupplied (relative to the contracted level of effort) is  $\eta$ . The regulator’s objective function is:

$$\text{Maximum}_{x_i, e_i, f_i} \left\{ v g(x_i, e_i) - c_e(\theta^e, e_i) - c_x(\theta_i^x, x_i) - \lambda f_i - (1 + \lambda) m c_m \right\} \quad i \in l, h. \quad (29)$$

The penalty function is defined as follows:

$$\eta(e) = \begin{cases} 0 & e \geq \hat{e} \\ \eta(e - \hat{e}) & e < \hat{e}. \end{cases} \quad (30)$$

Ozanne and White (2007) show that a solution is feasible if a moral hazard incentive constraint is satisfied:

$$c'_e(e_i) = m\eta \quad (31)$$

The objective function (29) is maximised subject above constraint, the *IR-h* (8) and the *IC-l* (16) constraints. The first order condition for effort is:

$$vg_{e_i} = (1 + \lambda)(c'_e(\theta^e, e_i) + \frac{c_m}{\eta} c''_e(\theta^e, e_i)) \quad i \in l, h. \quad (32)$$

Notably, the monitoring term is strictly positive and increases the marginal cost of effort. Relative to the solution, given by (19), monitoring reduces the land to effort ratio:

$$\frac{g_{e_h}}{g_{x_h}} = \frac{c'_e(\theta^e, e_h) + \frac{c_m}{\eta} c''_e(\theta^e, e_h)}{c'_x(\theta_h^x, x_h) + \frac{\lambda\phi_l}{(1 + \lambda)\phi_h} (c'_x(\theta_h^x, x_h) - c'_x(\theta_l^x, x_h))} < \frac{c'_e(\theta^e, e_h)}{c'_x(\theta_h^x, x_h)}. \quad (33)$$

*Result 5. The regulator monitoring contract is less cost-effective than either the input-based or mixed contract, as the second term on the right-hand side of (32) reduces the optimal effort to land ratio.*

### 3.8 Price-based contracts

*Assumption A6. The regulator observes farm types and offers each a price contract based on the ES output. The regulator does not contract directly on inputs or output. The output depends upon the farmer's supply response for ES output. The regulator is able to observe ES output as a basis of determining the payment.*

A perfect information price contract is where the regulator acts as a price discriminating monopsony and has perfect information about types. The regulator's objective function is:

$$\text{Maximum}_{p_i} \sum_i \phi_i \{ v y_i(p_i) - c_y(\theta_i, y_i) - \lambda p_i y_i \} \quad i \in l, h \quad (34)$$

subject to:

$$y_i(p_i) = \text{argmax}[p_i y_i - c_y(\theta_i, y_i)] \quad i \in l, h. \quad (35)$$

The first-order conditions are:

$$v = (1 + \lambda) c'_y(\theta_i, y_i) + \frac{\lambda y_i(p_i)}{y'_i(p_i)} = (1 + \lambda(1 + \varepsilon(p_i)^{-1})) c'_y(\theta_i, y_i) \quad (36)$$

where  $\varepsilon(p_i)$  is the price elasticity of conservation output with respect to price. A first-best price contract is sub-optimal to a first-best output-based contract and entails less conservation output for a given budget due to the cost of paying both types a rent. For any arbitrary ES output, a regulator would prefer to pay the cost rather than an output price. Comparing  $p_i y_i$  and  $c_y(\theta_i, y_i)$ , to incentivise some level of output  $\tilde{y}_i$  and  $\tilde{p}_i = c'_y(\theta_i, \tilde{y}_i)$ , for a strictly convex cost function and positive levels of output,  $p_i \tilde{y}_i > c_y(\theta_i, \tilde{y}_i)$  implies that marginal cost is greater than the average cost that is  $c'_y(\theta_i, \tilde{y}_i) > c_y(\theta_i, \tilde{y}_i) / \tilde{y}_i$ . Thus the transfer payment for a given output is higher under a price-based contract than under an output scheme.

*Assumption A7. The same as A6 except that the regulator does not observe type and offers all types a single price.*

If only a single price is offered to both producers, then the optimal solution is:

$$v = (1 + \lambda) \{ \phi_l c'_y(\theta_l, y_l) + \phi_h c'_y(\theta_h, y_h) \} + \lambda (\phi_l y_l + \phi_h y_h) / (\phi_l y'_l(p_l) + \phi_h y'_h(p_h)). \quad (37)$$

This is equivalent to (36) except that in each case the expected terms for marginal cost, output and the marginal ecosystem output are substituted.

*Result 6. In a first-best price based contract compared to a first-best input contract the ES output is reduced due to the public cost of rent from supplying the ecosystem service.*

*Result 7. If the regulator addresses hidden information by offering a single price, the optimal solution is determined by the expected values of first-order condition (37). The averaging effect means that the *l*-type has output less than or equal to and the *h*-type an output greater than or equal to the first-best price contract.*

### **3.9 Two-period and repeated contracts**

*Assumptions A8. The assumptions are the same as A2 for the input-based contract with adverse selection. Specific assumptions for the two-period contract include inputs in the first period appreciate the ecosystem asset in both that period and in the second. Producer types are stable over the two periods. The initial condition of the ecosystem asset is the same for both types at  $y_0$ . A total transfer payment variable is paid for each type  $f_i^r = f_{1i} + \delta f_{2i}$  which gives the present-value of payments over the two periods. The farmers and regulator have an identical discount factor,  $\delta$ . The duration of periods may be unequal.*

Dynamic contracting in a two-period setting lacks a general solution (Rey and Salanie, 1996). A key issue with dynamic contracts is time (in)consistency, in that farmers have incentives to not reveal their type due to a concern that the information will disadvantage the agent during renegotiation. Separating contracts may not be incentive compatible if farmers expect the regulator to use the information to ‘ratchet-up’ the efficiency required on the basis of the information on type (MacKenzie et al, 2008). Further attempts to separate out the *l*-type by providing extra rent in the first period may lead to the *h*-type selecting the contract intended for the *l*-type and following a ‘take-the-money-and-run’ strategy (Laffont and Tirole, 1988).

One approach to this problem is to offer a single pooled contract, but this might significantly reduce cost effectiveness. The alternative explored here and in the case study is for the regulator to commit to honour the separating contract over both periods, but negotiate Pareto-improving terms in the second period based on the revealed information. The general form of

the model is due to Laffont and Tirole (1993, Chapter 2). The difference with their model is that farmers are investing in an ecosystem asset so that the problem changes through time.

Commitment by the regulator is critical for investment in ecosystem assets as it can prevent incentives that could arise for farmers to first invest in the ecosystem asset and then subsequently dis-invest. Contracting with commitment is viewed as a process of managing the ecosystem asset in a transition towards equilibrium where the agent's type is known and they are paid in a long term contract to maintain the equilibrium. At this stage the regulator may offer the agent a covenant to permanently protect the asset. In this section we explore this transition towards equilibrium.

The regulator's objective function over two periods is:

$$\text{Maximum}_{x_i, e_i, f_i^r} \sum_i \phi_i \left\{ \begin{aligned} &v(g(x_{1i}, e_{1i}, y_0) - c_e(\theta^e, e_{1i}) - c_x(\theta_i^x, x_{1i}) + \\ &\delta(vg(x_{2i}, e_{2i}, y_{1i}) - c_e(\theta^e, e_{2i}) - c_x(\theta_i^x, x_{2i})) - \lambda f_i^r \end{aligned} \right\} \quad i \in l, h; \quad t \in 1, 2. \quad (38)$$

This is optimised subject to the participation constraints:

$$f_i^r - c_e(\theta^e, e_{1i}) - c_x(\theta_i^x, x_{1i}) + \delta(-c_e(\theta^e, e_{2i}) - c_x(\theta_i^x, x_{2i})) \geq 0 \quad i \in l, h \quad (39)$$

and the incentive compatibility constraints:

$$\begin{aligned} &f_i^r - c_e(\theta^e, e_{1i}) - c_x(\theta_i^x, x_{1i}) + \delta(-c_e(\theta^e, e_{2i}) - c_x(\theta_i^x, x_{2i})) \geq \\ &f_j^r - c_e(\theta^e, e_{1j}) - c_x(\theta_j^x, x_{1j}) + \delta(-c_e(\theta^e, e_{2j}) - c_x(\theta_j^x, x_{2j})) \quad i, j = l, h; \quad i \neq j \end{aligned} \quad (40)$$

The first-order conditions are derived on the basis that the individual rationality constraint for the *h-type* and the incentive compatible constraint for the *l-type* are binding. The effort conditions are the same for both types:

$$v(g_{e_{1i}} + \delta g_{y_{1i}} g_{e_{1i}}) = (1 + \lambda) c_e'(\theta^e, e_{1i}); \quad v g_{e_{2i}} = (1 + \lambda) c_e'(\theta^e, e_{2i}) \quad i \in l, h. \quad (41)$$

Effort in the first period increases the ecosystem asset in the first and second period. In common with the static solution (17) and (18) the optimal land allocation for the low cost type is the first-best:

$$v(g_{x_{1l}} + \delta g_{y_{1l}} g_{x_{1l}}) = (1 + \lambda)c'_x(\theta_l^x, x_{1l}); \quad v g_{x_{2l}} = (1 + \lambda)c'_x(\theta_l^x, x_{2l}). \quad (42)$$

The *h*-type marginal condition includes two informational rents one for each period:

$$v(g_{x_{1h}} + \delta g_{y_{1h}} g_{x_{1h}}) = (1 + \lambda)c'_x(\theta_h^x, x_{1h}) + \frac{\lambda\phi_l}{\phi_h}(c'_x(\theta_h^x, x_{1h}) - c'_x(\theta_l^x, x_{1h})) \quad (43)$$

$$v g_{x_{2h}} = (1 + \lambda)c'_x(\theta_h^x, x_{2h}) + \frac{\lambda\phi_l}{\phi_h}(c'_x(\theta_h^x, x_{2h}) - c'_x(\theta_l^x, x_{2l})). \quad (44)$$

Embedded in this problem is an issue of the length of contracts and the duration of each stage. The regulator may make the first period short so that the performance of firms can be observed, possibly by active output monitoring (White, 2005), and the second period longer as the regulator offers the farms revised Pareto improving contracts.

*Result 8. With two period and repeated contracts the regulator may commit to allow the l-type producer to earn an information rent in both periods. Any renegotiation cannot make the agents worse off. However, a renegotiation that increases inputs from the h-type in the second period and maintains or increases the rent to the l-type may improve cost-effectiveness.*

**Table 1 about here**

## 4 A case study

The south-west corner of Western Australia is designated by Conservation International as a Biodiversity Hotspot (Myers et al., 2000). This designation indicates a region of high endemic plant biodiversity, and yet one which is under a high level of threat from agriculture. For instance, the NEWROC (Northeast Wheatbelt Regional Organisation of Councils) region

has only around 12% of its indigenous, native vegetation remaining. The role of input and output based agri-environmental schemes in protecting this ecosystem and the characteristics of the study region is described in detail by White and Sadler (2012).

The remaining biodiversity in the region is found in remnant woodland, shrub and mallee heath, collectively termed “bush remnants”. The threats to biodiversity include land clearing for cereal and sheep production (although further clearing is banned), the encroachment of agricultural weeds, and sheep grazing. Management practices include excluding sheep through fencing, weeding and replanting. The regulator (the Western Australian Department of Parks and Wildlife) can identify the area of land that is fenced and included in a conservation scheme at low cost. However, other conservation efforts by the farmer are almost impossible to observe and record in a way that is legally enforceable. Similarly, the management of sheep grazing is difficult to observe at the individual farm. The opportunity cost of the labour element of conservation effort is difficult to observe and highly variable (White and Sadler, 2012). This is a region where land sparing rather than land sharing (Balmford et al, 2012) is the best strategy, as the ecosystem benefits are relatively low on land planted to crops or used for grazing.

The nature of the ecosystem services provided by remnant bush is complex. It includes biodiversity conservation, sequestering carbon and reducing the rate of dryland salinity spread. The social value of these components is likely to be context specific and highly variable. Non-market valuation of biodiversity protection for Western Australia have indicated high values and shows that the Western Australian population has some awareness of the diversity of flowering plants in such areas (Burton et al., 2012). Ecosystem output measurement is feasible and reasonably inexpensive if it is undertaken by remote sensing either through aerial photographs or satellite data. In contrast, field surveys of ecological condition, due to the remoteness of the region, are costly. As the authors show, a bush condition metric (crudely a measure of tree and understorey) is highly variable. This is partly due to the Western Australian environment which is prone to droughts and fires. Therefore risk aversion is potentially an issue for outcome-based payment schemes. The farms are large with an average size of farms surveyed 6593ha with a high level of capital investment and low level of labour. Despite their large size, most farms employ only one person and can be

categorized as family farms. The duration of ecosystem service contracts is important. Any change in the bush management would probably take about three years to take effect, with a significant change after six to ten years (Prober and Smith, 2009). There is a distinct possibility that the bush could deteriorate if there is sub-optimal effort. We use this system to show the relative properties of the contract types described in Section 3, based on the simulation modelling reported in White and Sadler (op cit).

### **Table 2 here**

Table 1 shows parameter values and functional forms. The results in Table 2 show that where there is perfect information the regulator can achieve the same level of efficiency with an input contract (contract 1) and an output contract (contract 3). In the case of hidden land productivity, an input contract (contract 2) is slightly more efficient than an output contract (contract 4). Mixed contracts (contract 5) which target land and output are as efficient at addressing adverse selection as an input contract and can also induce a farmer to supply an optimal level of effort. This is an interesting result that holds trivially for the case of two inputs but in more complex policy settings may suggest that regulators should consider targeting more observable variables, which then provides an indirect incentive to manage inputs that are unobservable.

### **Table 3 here**

First best price contracts (contract 6) and single price contracts (contract 7) are less efficient than contracts 1 through to 5. This is due to the shadow cost of taxation and the producer surplus (rent). These two contracts raise an issue about whether in the long term it is better to allow farmers to profit from providing ecosystem services much in the same way as they profit from providing market goods. From a cost-effectiveness viewpoint, most attention has been on devising agri-environment schemes which extract all rent from participants, but this might not always be the best long-run option. Note also that a pricing approach would place



an emphasis upon the ability of the regulator to estimate the non-market and market values of ES outputs as the price should be set relative to the ES value.

Table 3 gives results for the two-period input-based commitment model. The first-best solution (contract 9) provides a benchmark. Notice that the inputs increase in period two as the increase in the ecosystem asset raises their marginal products. The mechanism design solution (contract 10) reduces land and effort input for the high cost type. The renegotiation proof contract (contract 11) offers the mechanism design menu for both periods in the first period, but also implies that any renegotiation in the second cannot make farmers worse off. The solution shows that there is a modest increase in social welfare from this contract relative to the mechanism design contract. The rent of the *l-type* farmer is the same as that for mechanism design and the high cost type switches to a first best level of land and effort given the ecosystem asset at the end of the first period. It is for this reason that the input levels are slightly less than for the first best.

## 5 Conclusions

In their assessment of European agri-environmental policy the European Court of Auditors (2011) conclude: *“The Court found that the objectives determined by the Member States are numerous and not specific enough for assessing whether or not they have been achieved. ... In particular, very little information was available on the environmental benefits of agri-environment payments.* (European Court of Auditors, 2011, p7).

This paper identified a series of results that offer insights into the problems inherent in such a policy design process. First, with perfect information about farm type, the regulator is indifferent between offering an input-based or output-based contract. However, we know that such observability is unlikely to describe many (any) real-world situations. The next key finding extends a result by Khalil and Lawaree (1995) to the case where there are two inputs (one observable by the regulator and the other not) and shows that there is an efficiency gain from using input-based contracts to address adverse selection. This result hinges on the ability of the regulator to minimize the informational rent by adjusting the effort to land ratio away from the cost minimizing solution. The next result shows that if the regulator is able to

measure the ES output and contract on it, then they can provide an incentive for an optimal level of the unobservable effort and informational rent. Result 4 shows that contracting on output eliminates the requirement for explicit effort monitoring.

A price-based contract that pays on ES output is attractive in terms of its administrative requirement as it only requires output monitoring. However, fixed price contracts are relatively costly to the regulator as they pay more rent to farmers (Hanley et al, 2012; Armsworth et al, 2012).

Results for multi-period adverse selection and renegotiation are complex and are approached here by assuming regulator commitment and only allowing Pareto improving renegotiation in the second period. This is appropriate in many contracts for ecosystem services, such as the native bush example, where significant gains to society derive from long term protection. Spot contracting, especially where paying on inputs only, is usually not optimal as it can lead to cycles of ecosystem asset appreciation and depreciation if there are gaps in the contract (Iossa and Rey, 2015). The practical implications of the results here are that in a multi-period contract setting, even if the contracts are on inputs, it is advisable to measure output as well as imposing an additional condition for recontracting. The duration of the contract stages is also important. There may be a case for a short initial period (say 3 years in the empirical example described above) that allows the farmer to signal to the regulator their type before the regulator engages in Pareto improving renegotiation. This renegotiation sets up a long term contract (over 10 years, for instance) with a condition on renegotiation at the end of the second period.

The farmer can be seen as making a sunk investment in the ecosystem asset that provides future ecosystem services. If the farmer continues to own the asset, and on the basis that only the regulator is prepared to pay for a public good, there is the danger to the farmer of the regulator withdrawing support and the farmer not receiving a return on investment, similarly society may not benefit from the investment if the farmer does not continue to participate. These issues strays into the domain of incomplete contracts (Hart and Moore, 1990; Tirole, 1999) and is a question for further research.

Our results have been obtained by analysis of simplified models combined with a simulation of an actual policy setting. There are limitations to this approach and there is a requirement for further research into more complex settings, especially those relating to repeated contracting and end-of-contact problems (Kuhfuss et al, 2015) and contracting with groups of agents (Herzfeld and Jongeneel, 2012).

## References

- Anthon S, Garcia S, Stenger A (2010) Incentive contracts for Natura 2000 implementation in forest areas. *Environmental and Resource Economics* 46(3): 281–302
- Armsworth P, Acs S, Dallimer M, Gaston K, Hanley N, Wilson P, (2012) The costs of simplification in conservation programmes. *Ecology Letters*, 15(5): 406–414
- Balmford A, Green, R, Phalan B (2012) What conservationists need to know about farming. *Proceedings of the Royal Society B: Biological Sciences* 279(1739): 2714-2724
- Barbier EB (2013). Wealth accounting, ecological capital and ecosystem services. *Environment and Development Economics* 18(2): 133–161.
- Baron, DP, (1985) Non-cooperative regulation of a non-localized externality. *The RAND Journal of Economics*, 16(4): 553-568
- Bateman IJ, Mace GM, Fezzi C, Atkinson G, Turner K (2011) Economic analysis for ecosystem service assessments. *Environmental and Resource Economics* 48(2):177–218
- Burton M, Zahedi J, White B (2012) Public Preferences for Timeliness and Quality of Mine Site Rehabilitation The Case of Bauxite Mining in Western Australia. *Resources Policy* 37(1):1-9
- Burton RJF, Schwarz, G (2013) Result-oriented agri-environmental schemes in Europe and their potential for promoting behavioural change. *Land Use Policy*, 30(1): 628-641
- Campbell HF, Bond KA (1997) The cost of public funds in Australia *Economic Record* 73(220): 22-34
- Derissen S, Quaas M (2013) Combining performance-based and action-based payments to provide environmental goods under uncertainty. *Ecological Economics* 85: 77-84
- European Court of Auditors (2011) Is agri-environment support well designed and managed? European Court of Auditors, Luxembourg
- Ferraro PJ (2008) Asymmetric information and contract design for payments for environmental services. *Ecological Economics* 65: 810-821
- Gibbons JM, Nicholson E, Milner-Gulland, EJ, Jones, JPG (2011) Should payments for biodiversity conservation be based on actions of results? *Journal of Applied Ecology*, 48, 1218-1226
- Hanley N, Banerjee S, Lennox G, Armsworth P, (2012) How should we incentivise private landowners to “produce” more biodiversity? *Oxford Review of Economic Policy* 28 (1): 93-113
- Hart O; Moore, J (1988) Incomplete contracts and renegotiation. *Econometrica* 56(4): 755-785
- Herzfeld T, Jongeneel, RA (2012) Why do farmers behave as they do? Understanding compliance with rural, agricultural, and food attribute standards. *Land Use Policy* 29(1): 250-260
- Hueth B, Melkonyan, T (2004) Multi-tasking, identity preservation, and contract design in agriculture. *American Journal of Agricultural Economics* 86(3): 842-847
- Iossa E; Martimort D (2015) the simple microeconomics of public-private partnerships. *Journal of Public Economic Theory* 17(1): 4-48.
- Khalil F, Lawarree, J (1995) Input versus output monitoring - Who is the residual claimant? *Journal of Economic Theory* 66(1): 139-157

- Kuhfuss L., R. Préget, S. Thoyer, N. Hanley, P. Le Coent and M. Désolé (2015) Nudges, social norms and permanence in agri-environmental schemes . Discussion Papers in Environmental Economics 2015/15, University of St Andrews.
- Laffont J-J, Tirole J (1993) A theory of incentives in procurement and regulation. MIT Press, Cambridge Mass
- Laffont J-J, Tirole J, (1990) Adverse selection and renegotiation in procurement. *Review Of Economic Studies* 75 597–626.
- Laffont J-J, Tirole J, (1988) The dynamics of incentive contracts. *Econometrica* 56(5): 1153-1175
- Laffont, J-J, Martimort D, (2002) The theory of incentives: the principal-agent model Princeton University Press, Princeton, NJ
- Lau LJ, (1976) Characterization of normalized restricted profit function. *Journal of Economic Theory* 12(1), 131-163
- MacKenzie IA, Hanley N, Kornienko T, (2008) The optimal initial allocation of pollution permits: a relative performance approach. *Environmental and Resource Economics*, 39 (3): 265-282
- Mäler K-G, Aniyar S, and Jansson Å (2009) Accounting for ecosystems. *Environmental and Resource Economics* 42(1): 39–51
- Mas-Colell A. Whinston MD, Green, JR (1995) *Microeconomic theory* Oxford University Press, New York
- Melkonyan T, Taylor M, (2013) Regulatory design for agroecosystem management on public rangelands. *American Journal of Agricultural Economics* 95(3): 606-627
- Miteva D, Pattanayak S, and Ferraro P, (2012) Evaluation of biodiversity policy instruments. *Oxford Review of Economic Policy*, 28 (1): 69-92
- Moxey A, White B, Ozanne A, (1999) Efficient contract design for agri-environment policy. *Journal of Agricultural Economics* 50(2): 187-202
- Myers N, Mittermeier RA, Mittermeier CG, da Fonesca GAB and Kent J (2000) Biodiversity hotspots for conservation priorities. *Nature* 403(4): 853-858
- Ozanne A, White B (2007) Equivalence of input quotas and input charges under asymmetric information in agri-environmental schemes. *Journal of Agricultural Economics* 58(2): 260-268
- Prober SM, Smith FP (2009) Enhancing biodiversity persistence in intensively used agricultural landscapes: A synthesis of 30 years of research in the Western Australian wheatbelt. *Agriculture Ecosystems & Environment* 132(SI): 173-191
- Rey P, Salanie, B., (1990) Long-term, short-term and renegotiation - on the value of commitment in contracting. *Econometrica* 58(3): 597-619
- Rey P, Salanie, B., (1996) On the value of commitment with asymmetric information. *Econometrica* 64(6): 1395-1413
- Tirole J, (1999) Incomplete contracts: where do we stand? *Econometrica*, 67(4): 741-81
- White B (2002) Designing voluntary agri-environmental policy with hidden information and hidden action. *Journal of Agricultural Economics*. 53(2): 353-360
- White B (2005) An Economic Analysis of Ecological Monitoring. *Ecological Monitoring* 189(1): 241-251
- White B, Sadler, R (2012) Optimal conservation investment for a biodiversity-rich agricultural landscape. *Australian Journal of Agricultural and Resource Economics* 56(1): 1-21

Wu, JJ Babcock, BA (1996) Contract design for the purchase of environmental goods from agriculture. *American Journal of Agricultural Economics*, 78(4): 935-945  
Zabel A, Roe B, (2009) Optimal design of pro-conservation incentives. *Ecological Economics*, 69(1): 126–134

## Appendix 1 Input-based contracts asymmetric information

The analysis of the theoretical model is greatly simplified by the fact that the IC for the *l-type* farm and the IR constraint for the *h-type* farm are the only constraints that are binding. Following Laffont and Tirole (1993, p59) The incentive compatibility constraint for the low cost farmer (IC-*l*) is:

$$f_l - (c_e(\theta^e, e_l) + c_x(\theta_l^x, x_l)) \geq f_h - (c_e(\theta^e, e_h) + c_x(\theta_l^x, x_h)) \quad (\text{A1})$$

The individual rationality constraint for the *h-type* (IR-*h*)  $f_h - (c_e(\theta^e, e_h) + c_x(\theta_h^x, x_h)) \geq 0$  implies:

$$f_l - (c_e(\theta^e, e_l) + c_x(\theta_l^x, x_l)) \geq (c_e(\theta^e, e_h) + c_x(\theta_h^x, x_h)) - (c_e(\theta^e, e_h) + c_x(\theta_l^x, x_h)) \geq 0$$

As  $f_h$  is at least  $(c_e(\theta^e, e_h) + c_x(\theta_h^x, x_h))$ , Thus we can ignore the IR-*l* constraint as it is implied by IC-*l*

If we now optimize (15) with respect to IC-*l* and IR-*h* it is possible to check that IC-*h* is satisfied from the first order conditions (17) and (18),  $x_l > x_h$  and  $e_l > e_h$

If we restate the IC-*l* constraint:

$$\begin{aligned} r_l &\geq r_h - ((c_e(\theta^e, e_h) + c_x(\theta_l^x, x_h)) + (c_e(\theta^e, e_h) + c_x(\theta_h^x, x_h))) \\ &\geq r_h - c_x(\theta_l^x, x_h) + c_x(\theta_h^x, x_h) \end{aligned}$$

Where  $r_l$  is the rent The IC-*h* is:

$$r_h \geq r_l - ((c_e(\theta^e, e_l) + c_x(\theta_h^x, x_l)) + (c_e(\theta^e, e_l) + c_x(\theta_l^x, x_l))) \geq r_l - c_x(\theta_h^x, x_l) + c_x(\theta_l^x, x_l).$$

Bringing the constraints together:

$$0 \geq (c_x(\theta_h^x, x_h) - c_x(\theta_l^x, x_h)) - c_x(\theta_h^x, x_l) + c_x(\theta_l^x, x_l).$$

The assumption that the IC-h constraint is implied by the IR-h and IC-l constraints holds as long as  $c_x^m(\theta_i^x, x_i) \geq 0$

## Appendix 2 Equivalency between mixed contracts and second-best input-based contracts

The regulator maximizes:

$$\text{Maximum}_{x_i, y_i, f_i} \sum_i \phi_i \left\{ v g(x_i, e_i(x_i, y_i)) - c_e(\theta^e, e_i(x_i, y_i)) - c_x(\theta_i^x, x_i) - \lambda f_i \right\} \quad i \in l, h$$

Subject to the participation for the high-cost type

$$f_h - c_e(\theta^e, e(x_h, y_h)) - c_x(\theta_h^x, x_h) = 0$$

and incentive compatibility constraint for the low cost type:

$$f_l - c_e(\theta^e, e(x_l, y_l)) - c_x(\theta_l^x, x_l) = f_h - c_e(\theta^e, e(x_h, y_h)) - c_x(\theta_l^x, x_h)$$

Both constraints enter as equalities. The four first order conditions for  $x_l, y_l, x_h, y_h$  are:

$$v = \frac{(1 + \lambda)c_x'(\theta_l^x, x_l) + (1 + \lambda)c_e'(\theta^e, e(x_l, y_l))e_{x_l}}{g_{e_l} e_{x_l} + g_{x_l}} \quad (\text{A21})$$

$$v = \frac{(1 + \lambda)c_e'(\theta^e, e(x_l, y_l))}{g_{e_l}} \quad (\text{A22})$$

$$v = \frac{\left( c_x'(\theta_h^x, x_h) + c_e'(\theta^e, e(x_l, y_l))e_{x_h} + (\lambda / \phi_h)(c_x'(\theta_h^x, x_h) - \phi_l(c_x'(\theta_l^x, x_h) + c_e'(\theta^e, e(x_h, y_h))e_{x_h} - \phi_l c_e'(\theta^e, e(x_h, y_h))e_{x_h})) \right)}{g_{e_h} e_{x_h} + g_{x_h}} \quad (\text{A23})$$

$$v = \frac{(1 + \lambda)c_e'(\theta^e, e(x_h, y_h))}{g_{e_h}} + \frac{\lambda \phi_l}{\phi_h} (c_e'(\theta^e, e(x_h, y_h)) - c_e'(\theta^e, e(x_h, y_h))) \quad (\text{A24})$$



First we establish that the low cost farmer selects the first-best solution. Rearrange (A22) to give:

$$vg_{e_i} = (1 + \lambda)c'_e(\theta^e, e(x_i, y_i)) \quad (\text{A25})$$

and (A22) to give:

$$v(g_{e_i} e_{x_i} + g_{x_i}) = (1 + \lambda)c'_x(\theta_l^x, x_i) + (1 + \lambda)c'_e(\theta^e, e(x_i, y_i))e_{x_i} \quad (\text{A26})$$

Substituting for  $vg_{e_i}$  :

$$(1 + \lambda)c'_e(\theta^e, e(x_i, y_i))e_{x_i} + vg_{x_i} = (1 + \lambda)c'_x(\theta_l^x, x_i) + (1 + \lambda)c'_e(\theta^e, e(x_i, y_i))e_{x_i}$$

This simplifies to:

$$vg_{x_i} = (1 + \lambda)c'_x(\theta_l^x, x_i)$$

Establishing that the solution is identical to the optimal solution to the input-based contract  
On the basis of (A24) effort is also identical.

The area and effort for the high cost farmer can also be shown to be the same as for the input-based contract. From (A24) the last term is zero as the effort costs are identical and rearranging:

$$vg_{e_h} = (1 + \lambda)c'_e(\theta^e, e(x_h, y_h)) \quad (\text{A27})$$

Rearranging (A23) and substituting in (A27) adding and subtracting  $\lambda c'_x(\theta_h^x, x_h)$  to the rhs and rearranging:

$$(1 + \lambda)c'_e(\theta^e, e(x_h, y_h))e_{x_h} + vg_{x_h} = (1 + \lambda)c'_x(\theta_h^x, x_h) - \lambda c'_x(\theta_h^x, x_h) + c'_e(\theta^e, e(x_h, y_h))e_{x_h} + (\lambda / \phi_h)(c'_x(\theta_h^x, x_h) - \phi_l(c'_x(\theta_l^x, x_h) + c'_e(\theta^e, e(x_h, y_h))e_{x_h}) - \phi_l c'_e(\theta^e, e(x_h, y_h))e_{x_h})$$

Using the fact that  $c'_e(\theta^e, e(x_i, y_i))e_{x_h} - \phi_l c'_e(\theta^e, e(x_i, y_i))e_{x_h} = \phi_h c'_e(\theta^e, e(x_i, y_i))e_{x_h}$

$$(1 + \lambda)c'_e(\theta^e, e(x_h, y_h))e_{x_h} + v g_{x_h} = (1 + \lambda)c'_x(\theta_h^x, x_h) + (1 + \lambda)c'_e(\theta^e, e(x_i, y_i))e_{x_h} + (\lambda / \phi_h)(-\phi_h c'_x(\theta_h^x, x_h) + c'_x(\theta_h^x, x_h) - \phi_l(c'_x(\theta_l^x, x_h)))$$

This simplifies to:

$$v g_{x_h} = (1 + \lambda)c'_x(\theta_h^x, x_h) + (\lambda \phi_l / \phi_h)(c'_x(\theta_h^x, x_h) - \phi_l(c'_x(\theta_l^x, x_h)))$$

and this is identical to the first order condition for the input-based contract (18).

**Table 1 Notation used in theoretical and empirical models**

Symbol	Description	Unit	Value/functional form
<i>Indices:</i>			
$i, j$	Farm type (land productivity)		$i, j = [l, h]$
$t$	Time period		$t = [0, 1, 2]$
<i>Parameters:</i>			
$\theta_i^x$	Land productivity parameter f		$\theta_l^x = 40; \theta_h^x = 1.5\theta_l^x$
$\theta_i^e$	Effort productivity		$\theta^e = 10;$
$p^a$	Agricultural commodity price (for example wheat)	\$t <sup>-1</sup>	
$w^a$	Agricultural input prices, for instance fertilizer	\$per unit	
$\delta^t$	Discount factor at time $t$	Per cent	$\delta^t = (1/(1+r))^t$
$\phi_i$	Probability that a firm is of type $i$		$\phi_l = 0.8; \phi_h = 0.2;$
$v$	Is the economic value per unit of ecosystem service	\$ unit metric	1000
$\lambda$	Shadow cost of tax funds	\$ <sup>-1</sup>	$0.1,$
$\eta$	Fine for non-compliance on effort	\$ per unit effort	\$500
<i>Variables:</i>			
$\bar{x}_i^a$	Fixed land area available for agriculture and conservation	ha	
$\bar{e}_i^a$	Fixed effort available for agriculture and conservation	hours	
$x_i$	Land allocated from agriculture to conservation	ha	
$e_i$	Effort allocated from agriculture to conservation	hours	
$y_{ti}$	Ecosystem output	metric	$y_0 = 1$
$f_{ti}$	Transfer payment from the regulator to farmer	\$	
$p_{ti}$	Output payment	\$ per unit of metric	
$r_i$	Rent	\$	
$m_i$	Monitoring frequency		$0 \leq m_i \leq 1$
<i>Functions:</i>			
$\pi(\theta_i^x, \theta_i^e, p, w, \bar{x}_i^a, \bar{e}_i^a)$	Agricultural profit as a restricted profit function	\$	
$c(\theta_i^x, \theta_i^e, x_i, e_i)$	Compliance cost function	\$	
$c_x(\theta_i^x, x_i)$	Opportunity cost of land	\$	$\theta_i^x (x_i)^{\beta_1} \beta_1 = 1.5;$
$c_e(\theta_i^e, e_i)$	Opportunity cost of effort	\$	$\theta_i^e (e_i)^{\beta_2}; \beta_2 = 1.5; \quad ^3$
$c_y(\theta_i, y_{ti})$	Minimum cost for firm $i$ to produce ecosystem output $y_{ti}$		
$y_{ti} = g(x_{ti}, e_{ti}, y_{t-1i})$	Ecosystem production function	metric	$y_{t+1i} = b_0 x_{ti}^{b_1} e_{ti}^{b_2} y_{ti}^{b_3}$ $b_0 = 1; b_1 = 0.6; b_2 = 0.2; b_3 = 0.1;$
$C_m$	Cost of full monitoring		\$1000

Note: Unless otherwise stated parameters taken from White and Sadler, (2012) 1. The land cost is based on the opportunity cost of land for sheep grazing and the cost of maintaining fencing .. 2. Estimated from the results of a choice modelling survey Burton et al (2012, p7) 3. The parameters  $\beta_1, \beta_2$  are set equal to ensure homogeneity of the cost function in the inputs This ensures that the effort to land ratio is constant where cost is minimized

**Table 2 Case study contracts**

	$J$	$e_l$	$e_h$	$x_l$	$x_h$	$y_l$	$y_h$	$f_l$	$f_h$		
Contracts	Social welfare	Effort low-cost	Effort high-cost	Land low-cost	Land high-cost	Output low-cost	Output high-cost	Transfer payment low-cost	Transfer payment high-cost	Rent $l$	Rent $h$
Input-based											
1. First-best	13636	105.677	97.81	20.16	14.24	29.87	26.61	14484	12900	0	0
2. Mechanism design	13556	105.67	95.71	20.16	12.91	29.87	25.75	15412	12147	928	0
3. Moral Hazard	13233	105.36	90.73	20.13	12.60	29.81	24.82	15323	11325	894	0
Frequency of monitoring effort:		031	029								
Output-based											
4. First-best	13636	105.67	97.82	20.16	14.24	29.87	26.61	14484	12900	0	0
5. Mechanism Design output	13553	105.67	93.74	20.16	13.65	29.87	25.71	15492	12100	1008	0
6. Mixed output/land-based	13556	105.67	95.71	20.16	12.91	29.87	25.75	15412	12147	928	0
Price-based <sup>1</sup>											
7. First-best-price contract	12291					27.37	22.21	842.11	776.13	10756	8043
8. Single price contract	12276					26.89	23.95	829.27	829.27	10408	9270

Note: The price contracts are based on a slightly modified example where the ecosystem production function parameter is modified to  $b_0=0.95$  for the high cost. With the baseline set of parameters the solutions are identical.

**Table 3 Case study two-period input contracts**

	J	$e_{il}$	$e_{ih}$	$x_{il}$	$x_{ih}$	$y_{il}$	$y_{ih}$	$f_l^r$	$f_h^r$		
Contracts	Social welfare	Effort low-cost	Effort high-cost	Land low-cost	Land high-cost	Output low-cost	Output high-cost	Transfer payment low-cost	Transfer payment high-cost	Rent $l$	Rent $h$
Input-based											
9. First-best											
$t=1$		132.37	121.97	25.25	17.76	35.77	31.74				
$t=2$		176.16	160.30	33.61	23.34	64.30	55.81				
<i>Total</i>	40898							49919	43669	0	0
10. Mechanism design											
$t=1$		132.37	119.19	25.25	16.08	35.77	30.69				
$t=2$		176.16	156.10	33.61	21.06	64.16	53.63				
<i>Total</i>	40628							53045	40916	3125	0
11. Renegotiation											
$t=1$		132.37	119.19	25.25	16.08	35.77	30.69				
$t=2$		176.16	159.53	33.61	23.23	64.30	55.41				
<i>Total</i>	40639							53045	42405	3125	0