



Cai, Rong-Rong and Zhang, Li-Zhi and Yan, Yuying (2017) Performance prediction of PM 2.5 removal of real fibrous filters with a novel model considering rebound effect. *Applied Thermal Engineering*, 111 . pp. 1536-1547. ISSN 1873-5606

Access from the University of Nottingham repository:

<http://eprints.nottingham.ac.uk/41058/1/Cai%20Rongrong%20-YYY%202017%20%28002%29.pdf>

Copyright and reuse:

The Nottingham ePrints service makes this work by researchers of the University of Nottingham available open access under the following conditions.

This article is made available under the Creative Commons Attribution Non-commercial No Derivatives licence and may be reused according to the conditions of the licence. For more details see: <http://creativecommons.org/licenses/by-nc-nd/2.5/>

A note on versions:

The version presented here may differ from the published version or from the version of record. If you wish to cite this item you are advised to consult the publisher's version. Please see the repository url above for details on accessing the published version and note that access may require a subscription.

For more information, please contact eprints@nottingham.ac.uk

1 **Performance prediction of PM 2.5 removal of real fibrous filters with**
2 **a novel model considering rebound effect**

3
4 Rong-Rong Cai¹, Li-Zhi Zhang^{1*}, Yuying Yan²

5
6 ¹Key Laboratory of Enhanced Heat Transfer and Energy Conservation of Education Ministry,
7 School of Chemistry and Chemical Engineering, South China University of Technology,
8 Guangzhou 510640, PR China

9 ²Fluids & Thermal Engineering Research Group, Faculty of Engineering, University of
10 Nottingham, Nottingham NG7 2RD, UK

11
12 **Abstract:** Fibrous filters have been proved to be one of the most cost-effective way of
13 particulate matters (specifically PM 2.5) purification. However, due to the complex structure
14 of real fibrous filters, it is difficult to accurately predict the performance of PM2.5 removal. In
15 this study, a new 3D filtration modeling approach is proposed to predict the removal
16 efficiencies of particles by real fibrous filters, by taking the particle rebound effect into
17 consideration. A real filter is considered and its SEM image-based 3D structure is established
18 for modeling. Then based on the simulation result, the filtration efficiency and pressure drop
19 are calculated. The obtained values are compared and validated by experimental data and
20 empirical correlations, and the results are proven to be in good agreement with each other. At
21 last, influences of various parameters including the face velocity, particle size and the particle
22 rebound effect on the filtration performance of fibrous filters are investigated. The results

* Author for correspondence. Tel/fax: 86-20-87114264; Email: lzzhang@scut.edu.cn

1 provide useful guidelines for the optimization and enhancement of PM2.5 removal by fibrous
2 filter.

3

4 **Keywords:** PM2.5; filtration performance; fibrous filter; particle rebound; Micro-macro
5 modeling; material property

6

7 **1. Introduction**

8 Particulate matter (PM) pollution has adverse effects on visibility, direct and indirect
9 radiative forcing, climate, and ecosystems [1-3]. [Airborne particulate matter \(including PM2.5\)](#)
10 [is a diverse pollutant class whose excessive presence in indoor air contributes to an array of](#)
11 [adverse health and material damage effects](#) [4]. Numerous particle filtration techniques have
12 been developed to reduce the concentrations of airborne particles in indoor air in the past
13 decades [5, 6]. Fibrous filters, which are commonly used in these particle filtration systems,
14 have been regarded as one of the most effective methods of particle removal from an aerosol
15 stream.

16 Filtration efficiency and pressure drop are recognized as two important parameters to
17 characterize the performance of fibrous filters. In order to reduce the design time and product
18 cost of fibrous filters, it is critical to explore an effective way to accurately predict the
19 performance of fibrous filters. Notably, the geometric structures of fibrous filters have
20 significant influences on the performance. However, it is very difficult to build a 3D model
21 similar to the real fibrous medium, because of the extreme complexities in real structures.
22 Thus, most of the previous studies were based on the virtually idealized fiber structure [7-10],

1 which neglected the fiber's inhomogeneous features and possible defects. The prediction of
2 such unrealistic models were then corrected using a variety of empirical coefficients, each
3 valid for a given range of fiber diameters, solid volume fraction or flow hydrodynamic
4 regimes. Recently, some researchers have investigated the filtration performance of fibrous
5 medium by creating representative 3D models of a real structures using techniques such as
6 MRI(Magnetic Resonance Imaging) [11], XCT (X-ray Microtomography) [12, 13], SEM
7 (Scanning Electron Microscope) [14] or DVI (Digital Volumetric Imaging) [15]. Meanwhile,
8 software called GeoDict and FilterDict have also been used in industry to model real filter
9 structures, and then to predict the transport and deposition of particles [16, 17].

10 It should be noted that most of the above researches assumed that once a particle is
11 determined to have been "stuck" to the fiber or to the aggregate surrounding the fiber, it is
12 captured immediately. However, the "immediately captured" assumption contradicts with
13 many experimental observations that the particle may be rebounded during its collision with
14 the fiber or the aggregate, resulting in a much lower filtration efficiency than originally
15 expected [18-22]. Therefore, more and more attentions have been paid to the collision and
16 adhesion behavior between the particles and the fibers, as well as their effects on the filtration
17 performances [23-26]. Rembor et al. found that a number of particles bounced from the fibers
18 and went back into the aerosol stream instead of being collected at Stokes numbers in the
19 range of 0.8-5.0 [26]. Adhesion energy is a key parameter to determine the rebound effect. As
20 lack in data on material properties, it is difficult to derive an expression for the adhesion
21 energy from the dynamic impact equation of particle motions. A common practice is to use
22 the adhesion theories developed from static equilibrium conditions, such as the models

1 proposed by Bradley [27], Hamaker [28], Dahneke [29], and Johnson [30]. These models
2 calculated the critical velocities, higher than which the particles are assumed to be rebounded
3 during collision processes.

4 However, all of above studies only focused on a single fiber or an array of fibers, and no
5 attempt has been tried to numerically study the impact of particle rebound effect with a
6 realistic fiber filter. Because it is difficult to consider the micro structure of the fiber filter and
7 to calculate its macro performance at the same time. This study tried to investigate the
8 filtration efficiency and pressure drop of a real filter, taking into account of the particle
9 rebound effect. Firstly, a 3D fibrous filter model is generated from SEM images, reflecting the
10 real features of the real fibers. Then, a micro-scale modeling of filtration for filter with a local
11 thickness is conducted, considering slip/transition molecular flow regime, particle rebound
12 effect during its collision with the fibers as well as the Brownian diffusion. In addition, based
13 on the micro modeling results, a macro-scale modeling of filtration for filter with actual
14 thickness is established and the performances of the real filter are calculated. The combination
15 of the micro and the macro modeling approach is a compromise between accuracy and
16 computation effort. Finally, the obtained calculation results are compared and verified with
17 the experimental data and empirical correlations. Especially the influence of
18 physical-chemical properties of the fibrous material like the Hamaker constant can be
19 analyzed with this new model.

20

21 **2. Filter characterizations and 3D structure modeling**

22 *2.1 Filter characterizations*

1 The glass fiber filters used for this study are supplied by Hong Mao Purification
2 Equipment Corp., Guangzhou, China. The thickness of the fiber is measured using ZUD-4
3 digital thickness gauge for textiles. The area weight of the glass fiber filter is measured
4 according to ASTM D 3776 (1997) by using an electronic balance. It is defined as the mass
5 per unit area and usually measured in g/m^2 .

6 The structural morphology of the fiber filter is observed by SEM, as shown in Fig. 1. The
7 fiber diameter distribution of the filter is determined from the SEM image using the Image J
8 software (<http://rsb.info.nih.gov/ij/>). The bubble point (largest pore-size), mean pore-size,
9 smallest pore of the filter, as well as the pore size distribution are determined using a capillary
10 flow porometer (Porous Materials Inc., USA), see Fig. 2. Then the SVF (Solid Volume
11 Fraction) of the filter can be calculated. All the basic characteristics of the fiber filter are
12 expressed as mean \pm standard deviation in Table 1.

13

14 Table 1 Basic characteristics for the investigated glass fiber filter.

15 Fig. 1. SEM image of the glass fiber filter.

16 Fig. 2. Morphological characteristics for fiber filter. (a) Fiber size distribution of the filter, (b)

17 Pore size distribution of the filter.

18 Fig. 3 Tester for classification filtration efficiency and pressure drop of filters (SX-L1060).

19 The Automated Filter Tester (as shown in Fig. 3) is used to experimentally evaluate the
20 filtration parameters, namely filtration efficiency and pressure drop. The instrument is
21 designed in compliance with the KFPA protocol and NIOSH Regulation 42 CFR Part 84
22 protocols. The aerosol generator produces the aerosols using potassium chloride (KCl), and

1 then dries and neutralizes them to ensure accurate results. The relative humidity is maintained
2 to be 30% during the experiments. Polydisperse aerosols, ranged from 0.015 μm to 0.80 μm
3 are pulled down through the filter by a vacuum pump. The targeted face velocities can be set
4 by adjusting the flow rates of the aerosol flow. Two solid-state laser-based light scattering
5 photometers measure the aerosol concentration, with one placed before and the other after the
6 filter. The photometer output signals are approximately proportional to the aerosol mass and
7 used to calculate the filter penetration P as

$$8 \quad P(\%) = \frac{C_{\text{down}}}{C_{\text{up}}} \times 100 \quad (1)$$

9 where C_{down} is the aerosol concentration downstream of the filter and C_{up} is the aerosol
10 concentration upstream of the filter. The filtration efficiency of the filter can then be
11 calculated as $\eta = 1 - P$. Filtration efficiencies for each particle size are measured
12 simultaneously by several sets of photometers. Pressure drop is measured at a given airflow
13 rate using a pressure gauge. The penetration and pressure drop are recorded at about 1-min
14 intervals throughout the test. For each filter under one test condition, the experiments are
15 performed five to ten times, and all data on penetration and pressure drop values are analyzed
16 using arithmetic mean values.

17 **2.2 3D structure modeling**

18 3D model of the investigated glass fiber filter is reconstructed from SEM images in the
19 following steps.

20 (1) The Gaussian blur (radius equal to three pixels) is applied to the original SEM image
21 to reduce the major pixel noise (see Fig. 4a and b).

22 (2) The average threshold level is applied for the grayscale SEM sample image to get the

1 upper fibers, resulting in a binary SEM image (see Fig. 4c). According to the study of
2 Ghasemi-Mobarakeh [31], a threshold of $(\mu_0 + \sigma) / 255$ is used to extract the outer layers of
3 the fiber. μ_0 and σ are the mean and standard deviation of the image matrix respectively.

4 (3) To keep the connectivity of the image, the binary SEM image is imported to Auto
5 CAD software and repair manually. Meanwhile the single black or white pixels representing
6 the minor noise are removed from the image. (see Fig. 4d)

7 (4) The centerline pixels of each fiber are calculated according to Zhang-Suen fast
8 parallel thinning algorithm [32]. The continuous centerline curves for each individual fiber
9 part are determined by the grouping of those centerline pixels having less than three
10 neighboring pixels. (see Fig. 4e and Fig. 4f)

11 (5) The 3D shape of each fiber is created by drawing cylinders along the centerline pixels.
12 Each centerline pixel point is firstly viewed as the bottom center of a cylinder. The height of
13 the cylinder is 1 pixel. Then the cylinder radius is increased till at least one white pixel
14 (representing the fiber surface) is reached [14]. Resulting 3D binary image is considered to be
15 the fiber filter of single layer. (see Fig. 4g).

16 (6) The final 3D filter model of the filter is built up as the stack of the N model layers.
17 It is assumed that the structures of the inner layers of the filter are similar to that of the outer
18 layer. Thus, 3D models of several outer layers at different positions are constructed for
19 stacking. The reconstructed fibrous filter should satisfy the following two principles. (1) The
20 thickness of the reconstructed filter should equal or close to the real filter thickness. (2) The
21 calculated mass area of the reconstructed filter should close to the measured values of the real
22 filter. The least square method is used for searching the optimal value, and the layer number

1 N is determined by the following equation[14] :

$$2 \quad \left| \sum_{i=1}^N m_{ci} - m_m \right| = \text{minimum} \quad (2)$$

3 where m_{ci} is the calculated mass area of the i th model layer and m_m is the measured mass
4 area of N layers. Fig. 4h shows a 3D filter model with thickness of 10 μm .

5 (7) Software Mimics (<http://biomedical.materialise.com/mimics>) is used to convert the
6 3D binary images to the filter entity for the further mesh generation.

7

8 Fig. 4. 3D fiber filter structure modeling from SEM image.

9

10 **3 Micro-scale modeling of filter with local thickness**

11 The actual fiber filter investigated is very thick ($h=200 \mu\text{m}$), thus it is difficult to
12 simulate the actual thickness with acceptable computational load, while considering its
13 microscopic flow structure at the same time. In this study, a multi-scale simulation method is
14 used to predict the filtration efficiency and the pressure drop of the fibrous filter. Firstly, the
15 filter is divided into several subsections along its thickness, each with a local thickness of
16 $h_i=10 \mu\text{m}$. Then the micro-scale model of a single subsection filter is set up and simulated.
17 Finally, using the micro-scale simulated results, the model of the filter with actual thickness is
18 established, in which the fiber filter is regarded as a homogeneous porous medium with
19 constant viscous resistance coefficient, which is a mature methodology in common CFD
20 software. The flow chart of the models is presented in Fig. 5.

21

22 Fig. 5. Flow chart of the simulation models.

1

2 In this section, the steady flow equations and the numerical scheme for simulating the
3 gas-solid flow in the filter with a local thickness (the subsection) are presented firstly. Then
4 the slip velocity boundary conditions, as well as mesh independence and computation domain
5 independence tests are studied. The emphasis will be laid on the modeling of particle-fiber
6 collisions and rebound. The results are used to draw the resistance coefficients for
7 macro-scale modeling of the whole filter.

8 ***3.1 Governing equations for air flow***

9 For the range of fiber size and flow conditions consider in this study, the Reynolds
10 number is smaller than unity. Thus the air flow through the fibrous medium is assumed to be
11 laminar, incompressible and at a steady state. The finite volume method [33] implemented in
12 the Ansys 13.0 code is used to solve the air flow field. The governing equations: continuity
13 and conservation of linear momentum are as follows. It should be noted that the influence of
14 particles on the air flow is neglected.

$$15 \quad \frac{D\rho}{Dt} + \rho \nabla \cdot U = 0 \quad (3)$$

$$16 \quad \rho \frac{DU}{Dt} = -\nabla p - \mu \nabla \times (\nabla \times U) + \frac{4}{3} \mu \nabla (\nabla \cdot U) \quad (4)$$

17 where, ρ , U , μ and p are the density, velocity, dynamic viscosity and pressure of the air
18 respectively.

19 ***3.2 Boundary conditions***

20 The computational region as well as the boundary conditions considered for the
21 simulations are shown in Fig. 6. At the inlet, the Dirichlet boundary condition is employed to
22 specify the gas velocity to the fibrous filter. The atmospheric pressure is imposed at the outlet.

1 There is to be noted that, uniform air flow inlet boundary condition has been placed at a
 2 distance of $20 d_f$ upstream of the filter, and outlet boundary conditions at a distance of $5 d_f$
 3 downstream of the filter [34] to avoid the interruption from the regions where strong velocity
 4 and pressure gradients are expected. A symmetry boundary condition is used for the sides of
 5 the computational region. Such a boundary condition will not affect the simulation results, as
 6 the flow is dominantly in the through-plane direction, and lateral flows are relatively weak.

7

8 Fig. 6. Simulation domain and the boundary conditions.

9

10 For the air flow on the fiber surfaces, a slip boundary condition is adopted. Because
 11 under the air thermal condition and the fiber diameters considered in this study, the fiber
 12 Knudsen number, $Kn_f = \frac{2\lambda}{d_f} > 0.001$ (λ is the mean free path of the air molecules and it is
 13 about 60 nm). This means that the slip flow prevails insider the fibrous filter in this study. To
 14 add this feature to the Ansys13.0 code, a UDF (User Defined Function) that considering the
 15 slip velocity at the fiber surfaces is developed. The wall shear stress is defined using the
 16 Maxwell first order model [35]

$$17 \quad U_w = \frac{2 - \sigma_v}{\sigma_v} \lambda \frac{\partial U}{\partial n} \Big|_w \quad (5)$$

18 where, U_w is the air velocity at the wall, σ_v is the tangential momentum accommodation
 19 coefficient.

20 ***3.3 Particle flow and capture***

21 Once the particle-free flow field is obtained, the particulates, modeled by rigid spheres of
 22 uniform density $\rho_p = 3000 \text{ kg/m}^3$ are then introduced into the domain. Using the Lagrangian

1 method, the force balance on a particle is integrated to obtain the particle position with time.

2 The dominant forces acting on the particles without considering collision are the drag force
3 exerted by the air flow and the Brownian force:

$$4 \quad m_p \frac{dU_{pi}}{dt} = F_d(U_i - U_{pi}) + F_{bi} \quad (6)$$

5 where, m_p , U_p and d_p are the particle mass, velocity and diameter. U is the air flow
6 velocity. F_d and F_{bi} are the amplitudes of the drag (for $Re_p = \rho U d_p / \mu$) and Brownian
7 force. They are given as

$$8 \quad F_d = \frac{18\mu}{d_p^2 \rho_p C_c} \quad (7)$$

9 and

$$10 \quad F_{bi} = \frac{18\mu \varepsilon_i}{d_p^2 \rho_p C_c} \sqrt{\frac{2U}{\Delta t (Sc)}} \quad (8)$$

$$11 \quad Sc = \frac{3\pi d_p \mu U}{C_c \sigma_B T} \quad (9)$$

12 where, $C_c = 1 + Kn_f(1.257 + 0.4e^{-1.1/Kn_f})$ is an empirical correction factor called
13 Cunningham slip correction factor. ε_i are zero-mean, unit-variance independent Gaussian
14 random numbers. T is the absolute temperature of the air, and σ_B is the Boltzmann
15 constant. The amplitudes of the Brownian force components are evaluated at each time step.
16 The particle trajectory calculation implemented in Ansys13.0 code is referenced by Qunis and
17 Ahmadi [36].

18 Now the collision is considered. To take into account the interception capture
19 mechanism, a C++ subroutine that works in Ansys13.0 environment is developed. During each
20 trajectory tracking step, the distances between the particles' centers and the fiber surfaces are
21 monitored. Once the distance is smaller than the particle radius, the particle is regarded to be

1 collided with the fiber. As shown in Fig. 7, the model of the particle-fiber collision
 2 implemented here is based on a suggestion of Dahneke [37] and it is consisted of an energy
 3 balance around the particle-fiber collision as follow

$$4 \quad E_{k,r} = (E_{k,in} + E_{p,in})e^2 - E_{p,r} \quad (10)$$

5 where $E_{k,in}$ and $E_{p,in}$ are the kinetic energy and potential energy before collision
 6 respectively. $E_{k,r}$ and $E_{p,r}$ are the kinetic energy and potential energy after collision
 7 respectively. e is the coefficient of restitution. The prerequisites of the adhesion of a particle
 8 is that the particle is not able to leave the fiber after the collision, thus $E_{k,r}=0$. Assuming that
 9 $E_{p,in} = E_{p,r} = E_w$, it yields a critical particle velocity

$$10 \quad U_{cr} = \left[\frac{2E_w(1-e^2)}{m_p e^2} \right]^{1/2} \quad (11)$$

11 Thus, when $U_{in} > U_{cr}$, then the particle would be rebounded, and the rebounded particle
 12 velocity satisfies $U_r = -U_{in}e$. Otherwise, it would be captured by the fiber.

13 The coefficient of restitution e can be calculated by following formula [29]

$$14 \quad e = e_0 + \exp(-1.7\delta) - 1 \quad (12)$$

15 where, e_0 is the value when collision velocity in normal condition approaching to zero and it
 16 can be chosen as $e_0=0.965$. δ is an elastic parameter associated with fiber and particle
 17 materials, and it can be calculated by

$$18 \quad \delta = \frac{2}{3\pi^{2/5}} \frac{d_p}{d_f} \frac{1}{\left(1 + \frac{d_p}{d_f}\right)^{1/10}} \left(\frac{U_{in}}{v_f} \right)^{3/5} \left(\frac{k_f}{k_p + k_f} \right)^{2/5} \quad (13)$$

$$19 \quad k_i = \frac{1 - \nu_i}{E_i} \quad (i = f, p) \quad (14)$$

20 where, ν and E are the Poisson's ratio and the Young's modulus of the fiber or particle.

1

2

Fig. 7. Schematic of particle collision and rebound on fiber surface.

3

4 The adhesion potential between fiber and particle E_w in Eq. (11) can be calculated as

5

$$E_w = \frac{Hd_p}{12z_0(1 + d_p/d_f)^{1/2}} \quad (15)$$

6 where, H is the Hamaker constant; z_0 is the distance between the particle and the fiber

7 when they are in adhesive equilibrium state, and usually it is $z_0 = 4 \times 10^{-10}$ m [28].

8 A C++ subroutine is developed to consider the rebound effect of the particle during

9 fiber-particle collision. It should be noted that the influence of the deposited particle on the

10 fiber capture performance, and the interactions among particles are neglected in the study.

11 During micro-scale simulation, a certain number of particles are introduced from the

12 upstream of the filter. Their trajectories are followed as they flow through the clean filter

13 according to the above governing mechanism. Once a particle is captured by the fiber, it is

14 deleted from the simulation zone. [Efficiency of the filter with local thickness \(filter subsection\)](#)

15 η_l then can be determined by the number of particles that can be removed from an aerosol

16 flow

17

$$\eta_l = \frac{M_{in} - M_{out}}{M_{in}} \quad (16)$$

18 where, M_{in} and M_{out} are the number of entering and exiting particles respectively.

19 [Pressure drop of the filter with local thickness \(filter subsection\)](#) Δp_l is determined by

20

$$\Delta p_l = p_{in} - p_{out} \quad (17)$$

21 where, p_{in} and p_{out} are the average pressure at the inlet and outlet of the domain.

1 *3.4 Mesh independence test*

2 Software ICEM is used for meshing the fibrous filter entity. The imported geometries are
3 meshed using tetrahedral elements, refined close to the fiber surfaces. In an irregular structure,
4 such as fiber filter, there are regions where fiber-to-fiber distance is very small such as at the
5 crossovers, and regions where fibers are relatively far from each other. The grid size required
6 to mesh the gap between two fibers around their crossover point is often too small. The
7 computational grid used for CFD simulations needs to be fine enough to solve the flow field
8 in the narrow gaps, and at the same time coarse enough to cover the whole domain without
9 requiring too much computational power.

10 To ensure that the simulation results are independent of the number of grid points, one
11 filter with local thickness of 10 μm is considered and meshed with different mesh densities.
12 This is done by adjusting the grid interval size in such a way that resulting in 9, 16, 25, 36, 49
13 64, 81 and 100 grids on the circular cross-section of the fibers. The results of the mesh
14 independence study are presented in Fig. 8, where the filtration efficiency and the pressure
15 drop of the filter are plotted versus the number of grids on the circular cross-section of the
16 fibers. Note that the face velocity is set to be 0.20 m/s and the particle diameter is 0.60 μm . It
17 is seen that by increasing the mesh density, both efficiency and pressure drop decrease,
18 reaching a plateau. Too small mesh density would cause over-prediction of filtration
19 efficiency and pressure drop. Meanwhile, when the grid number is larger than 64, further
20 increase in mesh density no longer significantly improve the computation accuracy. Thus the
21 number of grids on the circular cross-section of fibers is set to be 64 in the simulations.

22

1 Fig. 8. Influence of mesh density on efficiency and pressure drop calculations.

2

3 **3.5 Computation domain independence test**

4 To ensure that the simulation results are independent of the computation domain area,
5 domains with different width are chosen to simulate and calculate. Fig. 9 show the variations
6 of filter efficiency and pressure drop of the filter with the domain width at the face velocity of
7 0.20 m/s and particle diameter of 0.60 μm . As seen, with the increase of the computation
8 domain, both filter efficiency and pressure drop increase, reaching a plateau. Thus the area of
9 the domain in the simulation is chosen to be $50 \times 50 \times 10 \mu\text{m}^3$.

10

11 Fig. 9. Influence of domain width on efficiency and pressure drop calculations.

12

13 **4. Macro-scale modeling of filter with actual thickness**

14 In this section, the fiber filter with actual thickness is regarded as a porous medium to
15 give the whole filter performance with acceptable numerical load. This has been used in some
16 mature software like Ansys13.0. The porous medium model incorporates a pre-determined
17 flow resistance in a region of model defined as “porous” by adding a momentum source term
18 in the standard governing momentum equations. The source term is composed of two parts: a
19 viscous loss term (Darcy) and an inertial loss term, as shown in Eq. (18).

$$20 \quad S_i = -\left(\sum_{j=1}^3 D_{i,j} \mu U_j + \sum_{j=1}^3 C_{i,j} \rho |U| U_j\right) \quad (18)$$

21 where, S_i is the source term for the i th (x , y or z) momentum equation; $|U|$ is the
22 magnitude of the velocity; U_j is the velocity components in the x , y and z directions.

1 For laminar flow through a filter in this study, the pressure drop is typically proportional
2 to velocity and the porous medium model then reduces to Darcy's Law:

$$3 \quad -\frac{\Delta p}{h} = \beta \mu U \quad (19)$$

4 where, β is the viscous resistance coefficient and also the entries in the matrix D in Eq.
5 (18). Also according to Darcy's Law, the viscous resistance coefficients of each filter
6 subsection (totally 20 subsections) at different face velocities can be calculated using the
7 micro-scale simulation result as $\beta_1 = -\Delta p_1 / h_1 \mu U$. Then through macro-scale simulation, the
8 pressure drop of an actual filter can be obtained.

9 The efficiency of the filter with actual thickness is calculated by

$$10 \quad \eta = 1 - \prod_{i=1}^t (1 - \eta_i) \quad (20)$$

11 where t is the number of the filter subsections, η_i represents the capture efficiency of i th
12 filter subsection.

13 The simulation domain of the filter with actual thickness is showed in Fig. 10. Air flows
14 into the domain through a velocity-inlet, and leaves it from a pressure-outlet boundary
15 condition. Uniform flow inlet and outlet boundary conditions are placed at a distance of $5h_1$
16 upstream and downstream of the filter. A symmetry boundary condition is used for the sides
17 of the computational region.

18

19 Fig. 10. Simulation domain of the filter with actual thickness.

20

21 **5. Results and discussions**

22 The model parameters utilized both in the experimental tests and the simulations are

1 listed in Table 2. Note that the parameter values of the particles and fibers used in the
2 simulation are assumed to be in the dry state. The operating conditions in experiments are
3 expressed as arithmetic mean \pm standard deviation. Micro-scale model simulation is conducted
4 firstly to get the local viscous resistance, as well as the performance of the filter with local
5 thickness. Note that the inlet velocity and particle concentration of the first subsection are
6 specified according to the operating conditions, while, that of the other subsections are
7 specified to be equal to the outlet velocities and particle concentrations of the upper
8 subsections. Then the macro-scale model is used to get the performance of the fiber filter with
9 actual thickness. The results are compared with that calculated from available correlations in
10 literature [38] or the experimental data. The rebound effect during fiber filtration, as well as
11 the influence of the particle size, face velocity on the filtration performance are analyzed and
12 discussed. Note that the experimental tests are repeated five to ten times in order to get
13 average values and standard deviations.

14

15 Table 2 Parameters and their ranges used in filtration experiments and simulation tests.

16

17 First of all, the rebound effect on the filtration efficiency is considered. Particle
18 trajectories through a part of the filter with and without rebound are shown in Fig. 11. The
19 diameters of the particles are 0.4 μm and the face velocity is 0.5 m/s. To display more clearly,
20 only a single layer of the filter and part of the trajectories are demonstrated. Comparisons
21 between the filtration efficiency values obtained from simulations with or without considering
22 particle rebound effect along with the corresponding experimental results are presented in Fig.

1 12. It can be seen that the simulation results considering the particle rebound effect are
2 generally in better agreement with the experimental data than that without considering
3 rebound effect. Additionally, it can be found that the difference between the two simulation
4 model results become larger gradually with the increase in the particle size, which implies that
5 the particle rebound effect is more significant when the particle diameter is large. When the
6 particle size is very small (i.e. $d_p < 0.3 \mu\text{m}$), the rebound effect can be negligible. It is seen in
7 Fig. 12 that the effects of face velocity on filtration efficiency decrease when the particle size
8 is larger than $0.5 \mu\text{m}$. This is because when the particle diameter is $0.5 \mu\text{m}$, the filtration
9 efficiency of the filter with actual thickness are already as high as 97%. Particles with
10 diameter larger than $0.5 \mu\text{m}$ do have higher efficiency, but the increment is not as significant
11 as that from $0.4 \mu\text{m}$ to $0.5 \mu\text{m}$.

12

13 Fig. 11. Particle trajectory of a part of the filter for $0.4 \mu\text{m}$ diameter particles.

14 Fig. 12. Filtration efficiency calculation from simulation (with or without considering particle
15 rebound effect) compared with experimental data. (a) $U = 0.40 \text{ m/s}$, (b) $U = 0.60 \text{ m/s}$.

16

17 Increasing the face velocity enhances the particle rebound effect to some extent. A
18 comparison example for face velocities of 0.40 m/s and 0.60 m/s can be seen in Fig. 12(a)
19 and Fig. 12(b). Because when the face velocity increases, the opportunity is higher for the
20 collision velocity of the particle U_{in} to be larger than the critical velocity U_{cr} . Thus the
21 particle is more easily to rebound.

22 The influence of Hamaker constant on the rebound effect is investigated at the different

1 Stokes number (St). Note that the St is changed by changing face velocity and gas viscosity.
2 η' is the ratio of filtration efficiency considering rebound effect to that without considering
3 rebound effect. As shown in Fig. 13, when St is small, the filtration efficiency values obtained
4 from simulations considering particle rebound effect are very close to that without
5 considering rebound effect. So it is not necessary to consider the particle rebound effect at
6 low Stokes numbers. When St is large, the rebound effect becomes more significant, and with
7 the increase of Hamaker constant, the filtration efficiency ratio η' increases. Because the
8 Hamaker constant is a measure of the adhesion force between particles and fibers. The larger
9 the Hamaker constant is, the larger the adhesion force is. Therefore, larger Hamaker constants
10 lead to weak rebound effect and high filtration efficiency. Further more, compared with the
11 results from literature [26], it is seen that the influence of particle rebound effect on filtration
12 efficiency is much weaker for an actual filter than for a single fiber. Because for an actual
13 filter, the rebound particles may collide with fiber several times and be captured later.

14

15 Fig. 13. The influence of Hamaker constant on the particle rebound and filtration efficiency

16

17 In the second step, the effect of face velocity, particle diameter on the filter performance
18 are investigated by the proposed simulation approach. Apart from the experimental data, some
19 empirical correlations are also used to verify the simulation results.

20 The empirical correlations for filtration efficiency used in this study is based on
21 Kuwabara's cell model [39]. If the flow pattern and web structure of the fiber filter are known,
22 the filter efficiency η , can be calculated from single fiber efficiency as [38]

$$\eta = 1 - \exp\left(\frac{-4\alpha\eta_{sg}h}{\pi d_f}\right) \quad (21)$$

The total single fiber efficiency η_{sg} is resulted from the combination of four basic filtration mechanisms: interception η_R , inertial impaction η_I , gravitational settling (small enough to be neglected here) and Brownian diffusion η_d . The calculation formulas used in this study are listed below [38]

$$\eta_{sg} = 1 - (1 - \eta_R)(1 - \eta_I)(1 - \eta_d) \quad (22)$$

$$\eta_R = \frac{1+R}{2Ku} [2\ln(1+R) - 1 + \alpha + \left(\frac{1}{1+R}\right)^2 \left(1 - \frac{\alpha}{2}\right) - \frac{\alpha}{2}(1+R)^2] \quad (23)$$

$$\eta_I = \frac{(St)J}{2Ku^2} \quad (24)$$

$$St = \frac{d_p^2 \rho_p C_c U}{18\mu d_f} \quad (25)$$

$$J = (29.6 - 28\alpha^{0.62})R^2 - 27.5R^{2.8} \quad (26)$$

$$\eta_d = 1.6\left(\frac{1-\alpha}{Ku}\right)^{1/3} Pe^{-2/3} \quad (27)$$

where $Ku = -\ln\left(\frac{\alpha}{2}\right) - \frac{3}{4} + \alpha - \alpha^2/4$ is the Kuwabara's hydrodynamic coefficient and

$R = d_p / d_f$ is the particle to fiber diameter ratio. $Pe = Ud_f / D$ is the Peclet number.

$D = \frac{\sigma_B C_c T}{3\pi\mu d_p}$ is the diffusion coefficient, and $\sigma_B = 1.38 \times 10^{-23} \text{ m}^2 \cdot \text{kg} \cdot \text{s}^{-2} \cdot \text{K}^{-1}$ is the

Boltzmann constant.

The pressure drop of the filter is a function of face velocity, filter thickness, air dynamic viscosity, fiber diameter and dimensionless pressure drop $f(\alpha)$ as [40]

$$\Delta p = f(\alpha) \frac{\mu h U}{d_f^2} \quad (28)$$

The predictions obtained via the empirical correlation of Ogorodnikov obtained for slip and transition regime is [41]

1
$$f(\alpha) = \frac{16\alpha}{-0.5 - 0.5\ln\alpha + 1.15Kn_f(1-\alpha)^4} \quad (29)$$

2 Fig. 14 shows the filtration efficiency of the filter with actual thickness versus particle
3 diameter along with the Kuwabara's cell model and the experimental results. It can be seen
4 that the filter collection efficiency decreases at first and then increases subsequently by
5 increasing the particle size in the range of 0.05-0.6 μm , with the minimum filtration efficiency
6 at particle diameter of 0.2 μm . The filtration efficiency predicted by the simulations follows a
7 trend similar to that of the cell model of Eq. (21) and the experimental results. As an
8 important indicator for interception mechanism, the intercept coefficient (R) is ranged from
9 0.05 to 0.6 in this study. When R is large, the Stokes number is proportional to the square of
10 the particle size. It is clarified that the inertia is strengthened with increasing particle size
11 which makes the filtration efficiency increase. When R is small, Brownian force, rather
12 than the air flow field, dominantly influences the particle trajectory, thus the filtration
13 efficiency decreases with the increasing in particle diameter. The deviations of the model
14 filtration efficiency for the large particle sizes ($\geq 0.3 \mu\text{m}$) are mainly due to the particle
15 trajectory calculations, because the air flow plays the dominant role for the large particles and
16 their impacts on the air flow are neglected in the model. The deviations at the small particle
17 size range ($\leq 0.3 \mu\text{m}$) can be caused by the van der Waals force which is difficult to fully take
18 into account in the model and the possible existence of electrostatic force in the experiments.
19 The deviation is the largest for particle sizes of 0.3 μm , and it may be due to the combined
20 effects of the above two factors.

21 Fig. 14. Variations of filtration efficiency versus particle diameter.

22

1 Fig. 15 presents the relationship between the filtration efficiency and the face velocities.
2 It can be seen that the simulation results have a consistent trend with the predicted values of
3 the cell model, as well as with the experimental results. The filtration efficiency decreases
4 with the face velocity from 0.1 m/s to 0.6 m/s, because of increased drag forces and reduced
5 Brownian motion intensity.

6

7 Fig. 15. Variations of filtration efficiency versus face velocity.

8

9 In Fig. 16, the filter pressure drop obtained from simulation along with the experimental
10 tests are presented. It is shown in Fig. 16 that most of the pressure drop values calculated
11 from the simulations lie within the experimentally determined standard deviations. The
12 pressure drop increases gradually with decreasing particle sizes. It is due to the decreasing
13 number of particles with increasing particle diameters at the same particle mass concentration.
14 It can also be seen from Fig. 15 that, the pressure drop increases linearly with the face
15 velocity. This is because that the pressure drop is proportional to the face velocity which has
16 been shown in Eq. (28).

17

18 Fig. 16. Variations of pressure drop versus particle diameter and face velocity.

19

20 **6. Conclusions**

21 A 3D particle filtration model of fibrous medium based on the SEM image-based 3D
22 fiber structure has been built by considering slip/transition molecular flow regime,

1 particle-fiber rebound effect and Brownian diffusion effect. The predicted filtration efficiency
2 and pressure drop values have been compared with experimental data and available empirical
3 correlations. It is found that the simulation results are in good agreement with that obtained
4 from experiments and correlations.

5 The effects of different factors such as air velocity, particle diameter and material
6 property (Hamaker constant) have been investigated for the real filters. It is revealed that the
7 particle rebound effect becomes significant at high Stokes numbers ($St > 1.0$), whereas its
8 impact on filtration efficiency is not as significant as that for a single fiber. The rebound effect
9 increases with decreasing Hamaker constant, a measure of adhesion force. The variations of
10 predicted performance with operating parameters are well in consistency with the
11 experimental results. It is proved that the proposed modeling tool in this work will help to
12 predict the filtration efficiency and pressure drop of clean real fibrous medium, and to provide
13 useful guidelines for their optimization and enhancement.

14

15 **Acknowledgments**

16 The current work is supported by National Science Fund for Distinguished Young
17 Scholars of China (No.51425601); the Research Team Fund of Natural Science Foundation of
18 Guangdong Province (No.2014A030312009). It is also supported by Natural Science
19 Foundation of China, No. 51376064; National Science Fund for Young Scholars of China (No.
20 51506058) and Postdoctoral Science Foundation of China (No.2015M570711).

21

1 Nomenclature

2	C_0	particle concentration, $\mu\text{g}/\text{m}^3$
3	C_c	Cunningham slip correction factor
4	D	diffusion coefficient, $\text{m}^2 \cdot \text{s}^{-1}$
5	d	diameter, μm
6	d_{por}	pore diameter of filter, μm
7	e	restitution coefficient
8	E	Young's modulus, Pa
9	e_0	restitution coefficient constant
10	E_k	kinetic energy, J
11	E_p	potential energy, J
12	E_w	adhesion potential between fiber and particle, J
13	F_b	Brownian force, N
14	F_d	drag force, N
15	h	thickness of entire filter, μm
16	h_f	thickness of filter subsection, μm
17	H	Hamaker constant
18	Kn_f	fiber Knudsen number
19	Ku	Kuwabara's hydrodynamic coefficient
20	m	mass, g
21	m_s	mass area, g/m^2
22	m_{ci}	calculated mass of the i th layer, g

1	m_m	measured mass of N layers, g
2	M	particle number
3	N	number of filter layer
4	p	pressure, Pa
5	P	penetration, %
6	Pe	Peclet number
7	R	particle to fiber diameter ratio
8	Re_p	particle Reynold number
9	Sc	Schmidt number
10	St	Stokes number
11	t	number of filter layers
12	T	absolute temperature of the air, K
13	U	air velocity, m/s
14	U_{cr}	critical rebound velocity, m/s
15	U_p	particle velocity, m/s
16	U_w	air velocity at the wall, m/s
17	ν	Poisson 's ratio
18	z_0	distance between particle and fiber in adhesive equilibrium state, m
19	<i>Greek letters</i>	
20	α	solid volume fraction, %
21	β	viscous resistance coefficient
22	Δt	time step, s

- 1 Δp pressure drop of filter, Pa
- 2 Δp_1 pressure drop of filter subsection, Pa
- 3 δ elastic coefficient during collision
- 4 ε_i Gaussian random number
- 5 η filtration efficiency, %
- 6 η' filtration efficiency ratio, %
- 7 μ air dynamic viscosity, Pa·s
- 8 λ mean free path, m
- 9 ρ density, kg/m³
- 10 σ_B Boltzmann constant, m²·kg·s⁻²·K⁻¹
- 11 σ_v tangential momentum accommodation coefficient

12 *Subscripts*

- 13 l [filter subsection](#)
- 14 in inlet; before collision
- 15 out outlet
- 16 r reflect, after collision
- 17 f fiber
- 18 p particle

19

20 **References**

- 21 [1] A. Nel, Air pollution-related illness: effects of particles, *Science*, 308 (2005) 804-806.
- 22 [2] N. Mahowald, Aerosol indirect effect on biogeochemical cycles and climate, *Science*, 334(6057)

- 1 (2011) 794-796.
- 2 [3] M.O. Andreae, D. Rosenfeld, Aerosol–cloud–precipitation interactions. Part 1. The nature and
3 sources of cloud-active aerosols, *Earth-Science Reviews*, 89 (2008) 13-41.
- 4 [4] W.W. Nazaroff, Indoor particle dynamics, *Indoor Air*, 14 (Suppl 7) (2004) 175-183.
- 5 [5] A.D. Maynard, E.D. Kuempel, Airborne nanostructured particles and occupational health, *Journal*
6 *of Nanoparticle Research*, 7 (2005) 587-614.
- 7 [6] S.A. Grinshpun, A. Adhikari, T. Honda, K.Y. Kim, M. Toivola, K. Ramchander Rao, T. Reponen,
8 Control of aerosol contaminants in indoor air: combining the particle concentration reduction with
9 microbial inactivation, *Environmental science & technology*, 41 (2007) 606-612.
- 10 [7] Q. Wang, B. Maze, H.V. Tafreshi, B. Pourdeyhimi, A case study of simulating submicron aerosol
11 filtration via lightweight spun-bonded filter media, *Chemical Engineering Science*, 61 (2006)
12 4871-4883.
- 13 [8] S.A. Hosseini, H.V. Tafreshi, 3-D simulation of particle filtration in electrospun nanofibrous filters,
14 *Powder Technology*, 201 (2010) 153-160.
- 15 [9] F. Qian, N. Huang, J. Lu, Y. Han, CFD–DEM simulation of the filtration performance for fibrous
16 media based on the mimic structure, *Computers & Chemical Engineering*, 71 (2014) 478-488.
- 17 [10] F. Qian, J. Zhang, Z. Huang, Effects of the Operating Conditions and Geometry Parameter on the
18 Filtration Performance of the Fibrous Filter, *Chemical Engineering & Technology*, 32 (2009)
19 789-797.
- 20 [11] M.J. Lehmann, E.H. Hardy, J. Meyer, G. Kasper, MRI as a key tool for understanding and
21 modeling the filtration kinetics of fibrous media, *Magn Reson Imaging*, 23 (2005) 341-342.
- 22 [12] J. Lux, A. Ahmadi, C. Gobbé, C. Delisée, Macroscopic thermal properties of real fibrous materials:

- 1 Volume averaging method and 3D image analysis, *International Journal of Heat and Mass Transfer*,
2 49 (2006) 1958-1973.
- 3 [13] A. Jackiewicz, S. Jakubiak, L. Gradoń, Analysis of the behavior of deposits in fibrous filters
4 during non-steady state filtration using X-ray computed tomography, *Separation and Purification*
5 *Technology*, (2015 (in press)).
- 6 [14] W. Sambaer, M. Zatloukal, D. Kimmer, 3D modeling of filtration process via polyurethane
7 nanofiber based nonwoven filters prepared by electrospinning process, *Chemical Engineering*
8 *Science*, 66 (2011) 613-623.
- 9 [15] S. Jaganathan, H. Vahedi Tafreshi, B. Pourdeyhimi, Modeling liquid porosimetry in modeled and
10 imaged 3-D fibrous microstructures, *Journal of Colloid and Interface Science*, 326 (2008)
11 166-175.
- 12 [16] A. Wiegmann, S. Rief, A. Latz, Geodict and filterdict: Software for the virtual material design of
13 new filter media, *Proc. New Developments in Filtration Technology (Loughborough, Angleterre)*,
14 (2006).
- 15 [17] L. Cheng, R. Kirsch, A. Wiegmann, P.-C. Gervais, N. Bardin-Monnier, D. Thomas, A pleat scale
16 simulation environment for filtration simulation, in: *FILTECH 2013*, 2013, pp. G18-03-164.
- 17 [18] B.J. Mullins, I.E. Agranovski, R.D. Braddock, Particle Bounce During Filtration of Particles on
18 Wet and Dry Filters, *Aerosol Science and Technology*, 37 (2003) 587-600.
- 19 [19] H. Wang, H. Zhao, K. Wang, Y. He, C. Zheng, Simulation of filtration process for multi-fiber filter
20 using the Lattice-Boltzmann two-phase flow model, *Journal of Aerosol Science*, 66 (2013)
21 164-178.
- 22 [20] T. Ptak, T. Jaroszczyk, Theoretical-experimental aerosol filtration model for fibrous filters at

- 1 intermediate Reynolds numbers, in: Proceedings 5th world filtration congress, Nice France,
2 1990, pp. 566-572.
- 3 [21] L. Boskovic, I.E. Agranovski, I.S. Altman, R.D. Braddock, Filter efficiency as a function of
4 nanoparticle velocity and shape, *Journal of Aerosol Science*, 39 (2008) 635-644.
- 5 [22] A. Bałazy, A. Podgórski, L. Gradoń, Filtration of nanosized aerosol particles in fibrous filters. I –
6 experimental results, *Journal of Aerosol Science*, 35, Supplement 2 (2004) 967-980.
- 7 [23] G. Kasper, S. Schollmeier, J. Meyer, Structure and density of deposits formed on filter fibers by
8 inertial particle deposition and bounce, *Journal of Aerosol Science*, 41 (2010) 1167-1182.
- 9 [24] G. Kasper, S. Schollmeier, J. Meyer, J. Hoferer, The collection efficiency of a particle-loaded
10 single filter fiber, *Journal of Aerosol Science*, 40 (2009) 993-1009.
- 11 [25] S.Q. Li, J.S. Marshall, Discrete element simulation of micro-particle deposition on a cylindrical
12 fiber in an array, *Journal of Aerosol Science*, 38 (2007) 1031-1046.
- 13 [26] H.-J. Rembor, R. Maus, H. Umhauer, Measurements of single fibre efficiencies at critical values of
14 the Stokes number, *Particle & Particle Systems Characterization*, 16 (1999) 54-59.
- 15 [27] R.S. Bradley, The cohesive force between solid surfaces and the surface energy of solids, *The*
16 *London, Edinburgh, and Dublin Philosophical Magazine and Journal of Science*, 13 (1932)
17 853-862.
- 18 [28] H.C. Hamaker, The London-van der Waals attraction between spherical particles, *Physica*, 4 (1937)
19 1058-1072.
- 20 [29] B. Dahneke, The influence of flattening on the adhesion of particles, *Journal of Colloid and*
21 *Interface Science*, 40 (1972) 1-13.
- 22 [30] K.L. Johnson, K. Kendall, A.D. Roberts, Surface Energy and the Contact of Elastic Solids,

- 1 Proceedings of the Royal Society of London A: Mathematical, Physical and Engineering Sciences,
2 324 (1971) 301-313.
- 3 [31] L. Ghasemi-Mobarakeh, D. Semnani, M. Morshed, A novel method for porosity measurement of
4 various surface layers of nanofibers mat using image analysis for tissue engineering applications,
5 Journal of Applied Polymer Science, 106 (2007) 2536-2542.
- 6 [32] T.Y. Zhang, C.Y. Suen, A fast parallel algorithm for thinning digital patterns, Commun. ACM, 27
7 (1984) 236-239.
- 8 [33] S. Patankar, Numerical heat transfer and fluid flow, CRC Press, 1980.
- 9 [34] P.K. Wang, T. Jaroszczyk, The grazing collision angle of aerosol particles colliding with infinitely
10 long circular cylinders, Aerosol Science and Technology, 15 (1991) 149-155.
- 11 [35] M.J. McNenly, M.A. Gallis, I.D. Boyd, Empirical slip and viscosity model performance for
12 microscale gas flow, International Journal for Numerical Methods in Fluids, 49 (2005) 1169-1191.
- 13 [36] H. Ounis, G. Ahmadi, A comparison of Brownian and turbulent diffusion, Aerosol Science and
14 Technology, 13 (1990) 47-53.
- 15 [37] B. Dahneke, Particle bounce or capture-search for an adequate theory: I. conservation of energy
16 models for a simple collision process, Aerosol Science and Technology, 23 (1995) 25-39.
- 17 [38] W.C. Hinds, N.P. Kadrichu, The Effect of Dust Loading on Penetration and Resistance of Glass
18 Fiber Filters, Aerosol Science and Technology, 27 (1997) 162-173.
- 19 [39] S. Kuwabara, The forces experienced by randomly distributed parallel circular cylinders or spheres
20 in a viscous flow at small Reynolds numbers, Journal of the physical society of Japan, 14 (1959)
21 527-532.
- 22 [40] N. Rao, M. Faghri, Computer modeling of aerosol filtration by fibrous filters, Aerosol Science and

1 Technology, 8 (1988) 133-156.

2 [41] B. Ogorodnikov, Pressure-drop across FP fiber filters under gas slip-flow and in transition regime,

3 in, Plenum Publ Corp Consultants Bureau, 233 Spring, New York, 1976, pp. 168-172.

4

5

1 **Table captions**

2 Table 1 Basic characteristics for the investigated glass fiber filter.

3 Table 2 Parameters and their ranges used in filtration experiments and simulation tests.

4 **Figure captions**

5 Fig. 1. SEM image of the glass fiber filter.

6 Fig. 2. Morphological characteristics for fiber. (a) Fiber size distribution of the filter, (b) Pore
7 size distribution of the filter.

8 Fig. 3 Tester for classification filtration efficiency and pressure drop of filters (SX-L1060).

9 Fig. 4. 3D fiber structure modeling from SEM image.

10 Fig. 5. Flow chart of the simulation models.

11 Fig. 6. Simulation domain and the boundary conditions.

12 Fig. 7. Schematic of particle influence and rebound on fiber surface.

13 Fig. 8. Influence of mesh density on efficiency and pressure drop calculations.

14 Fig. 9. Influence of domain width on efficiency and pressure drop calculations.

15 Fig. 10. Simulation domain of the filter with actual thickness.

16 Fig. 11. Particle trajectory of a part of the filter for 0.4 μm diameter particles.

17 Fig. 12. Filtration efficiency calculation from simulation (with or without considering particle
18 rebound effect) compared with experimental data. (a) $U = 0.20$ m/s, (b) $U = 0.60$ m/s.

19 Fig. 13. The influence of Hamaker constant on the particle rebound and fiber efficiency.

20 Fig. 14. Variations of filtration efficiency versus particle diameter.

21 Fig. 15. Variations of filtration efficiency versus face velocity.

22 Fig. 16. Variations of pressure drop versus particle diameter and face velocity.

1
2
3
4
5
6
7
8
9
10
11
12
13
14
15
16
17

Tables and Figures

Table 1. Basic characteristics for the investigated glass fiber filter.

Solid Volume Fraction	Thickness	Mass per unit area	Fiber diameter
$\alpha / (\%)$	$h / (\mu\text{m})$	$m_a / (\text{g}/\text{m}^2)$	$d_f / (\mu\text{m})$
16.36	201±2	26.2±0.5	0.98±0.05

1

2 Table 2 Parameters and their ranges used in filtration experiments and simulation tests.

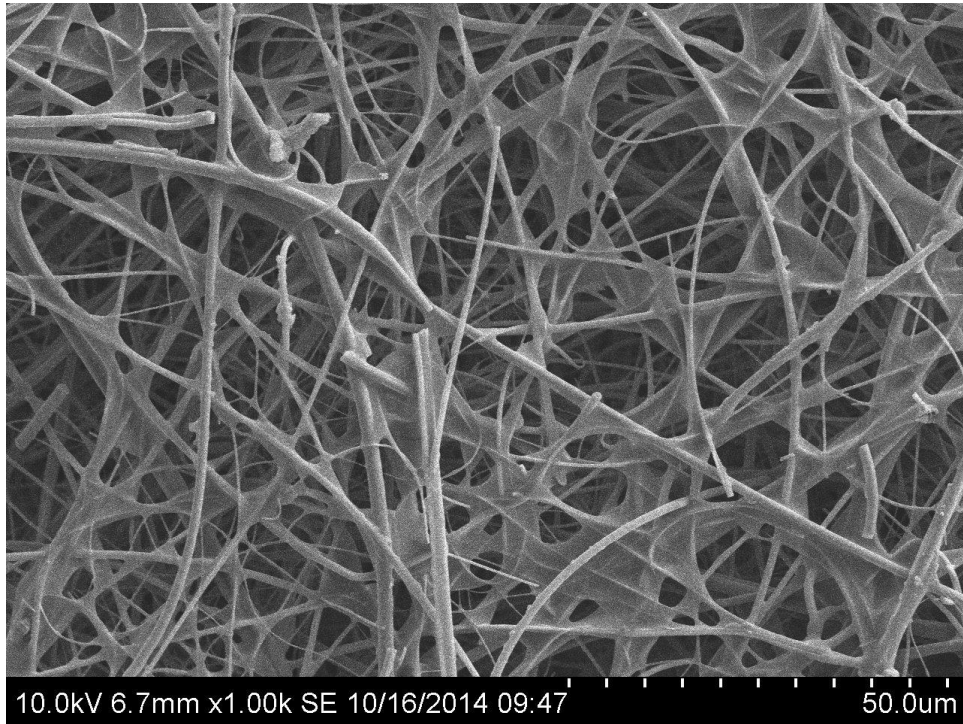
Parameters	Simulation values	Experimental values (mean \pm standard deviation)
Poisson 's ratio of particle ν_p	0.32	-
Poisson 's ratio of fiber ν_f	0.29	-
Young's modulus of particle E_p /(Pa)	2.00×10^{11}	-
Young's modulus of fiber E_f /(Pa)	3.20×10^9	-
Air temperature T /(K)	300.00	ambient (range from 293.5 to 308.0)
Particle density ρ_p /(kg/m ³)	3000.00	3002 \pm 5
Fiber density ρ_f /(kg/m ³)	7500.00	7502 \pm 5
Particle concentration C_0 /(μ g/m ³)	50.00	50.0 \pm 0.5
Particle diameter d_p /(μ m)	0.05/0.10/0.20/0.30/ 0.40/0.50/0.60	range from 0.015 to 0.8 μ m ,with mass median diameter of 0.26 μ m
Face velocity U /(m/s)	0.10/0.20/0.30/ 0.40/0.50/0.60	0.98 \pm 0.02/0.21 \pm 0.02/ 0.30 \pm 0.02/0.41 \pm 0.02/ 0.50 \pm 0.03/0.62 \pm 0.03
Hamaker constant	1.0×10^{-19} / 5.0×10^{-19} / 10.0×10^{-19}	-
Air dynamic viscosity μ /(Pa \cdot s)	0.90×10^{-5} / 1.80×10^{-5}	1.80×10^{-5}

3

4

1

2



3

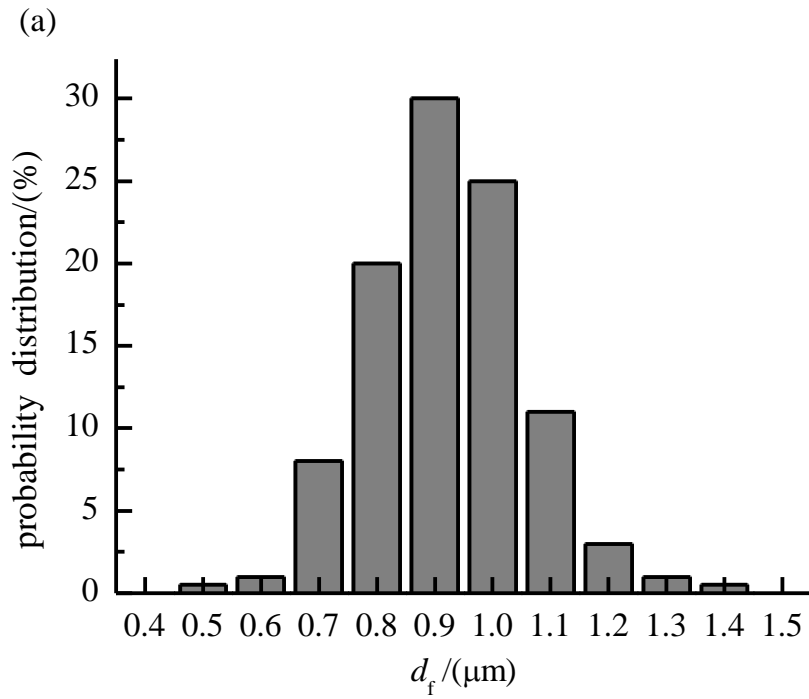
4

Fig. 1. SEM image of the glass fiber filter.

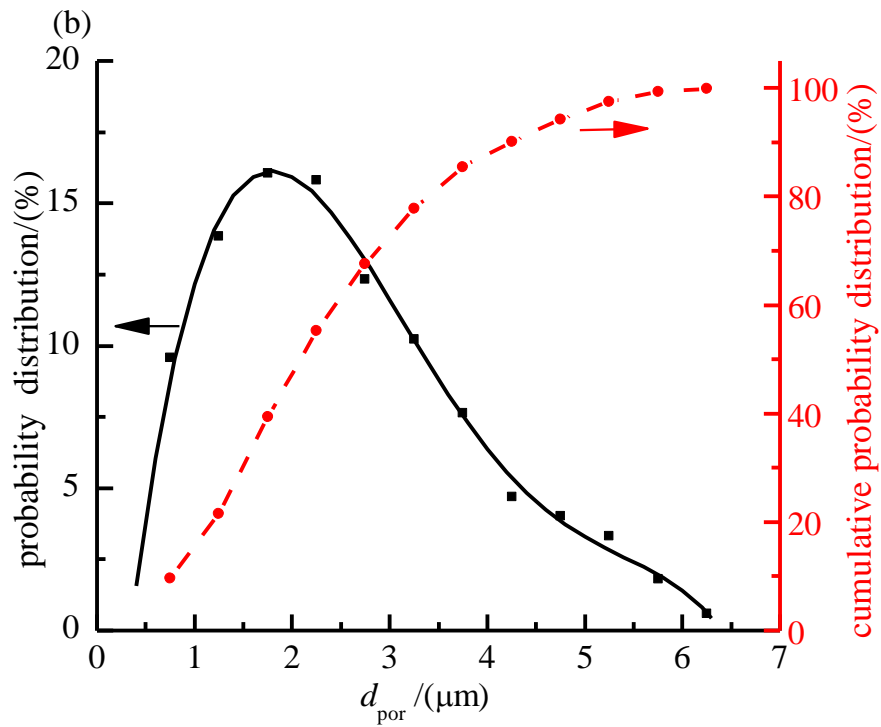
5

6

1



2



3

4 Fig. 2. Morphological characteristics for fiber filter. (a) Fiber size distribution of the filter, (b)

5

Pore size distribution of the filter.

6

1

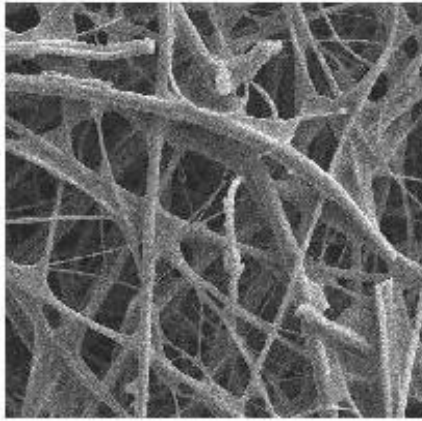


2

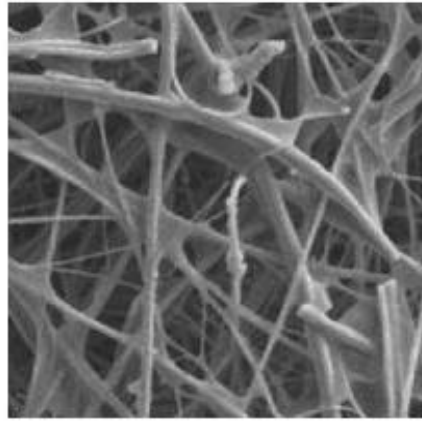
3 Fig. 3. Tester for classification filtration efficiency and pressure drop of filters (SX-L1060).

4

a. Original SEM image



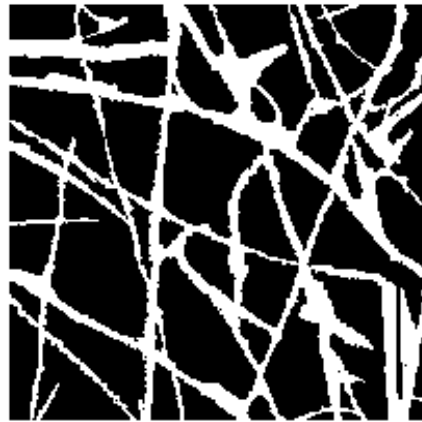
b. SEM image after filtering



c. SEM image after threshold segmentation



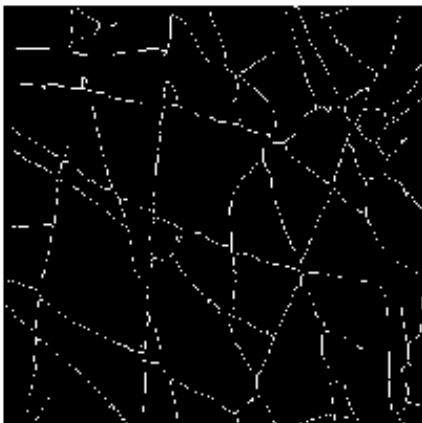
d. SEM image after repair



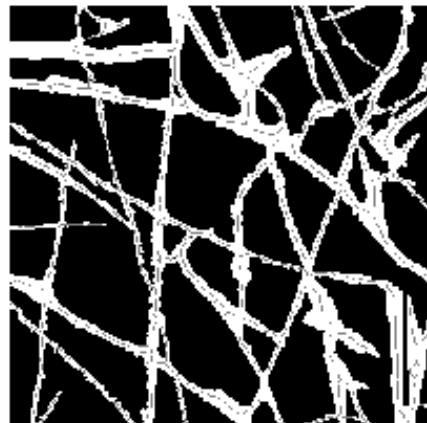
1

2

e. SEM image after refinement



f. Centerline determination from SEM image

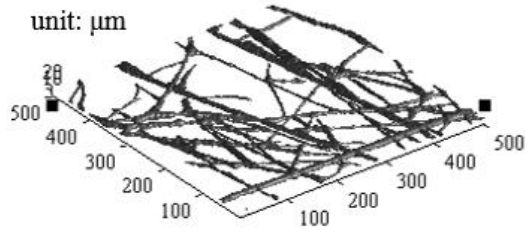


3

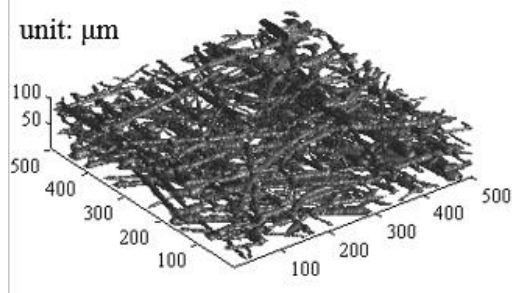
4

g. Reconstructed 3D fiber layer

h. Reconstructed 3D fiber layer (six layers)



1



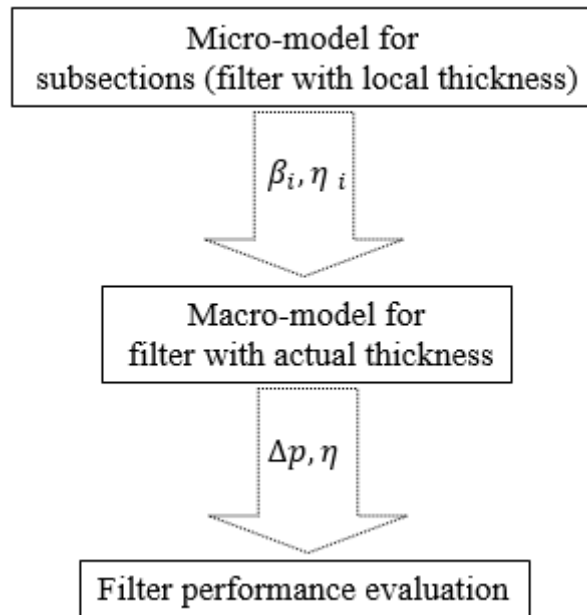
2

3

Fig. 4. 3D fiber filter structure modeling from SEM image.

4

5



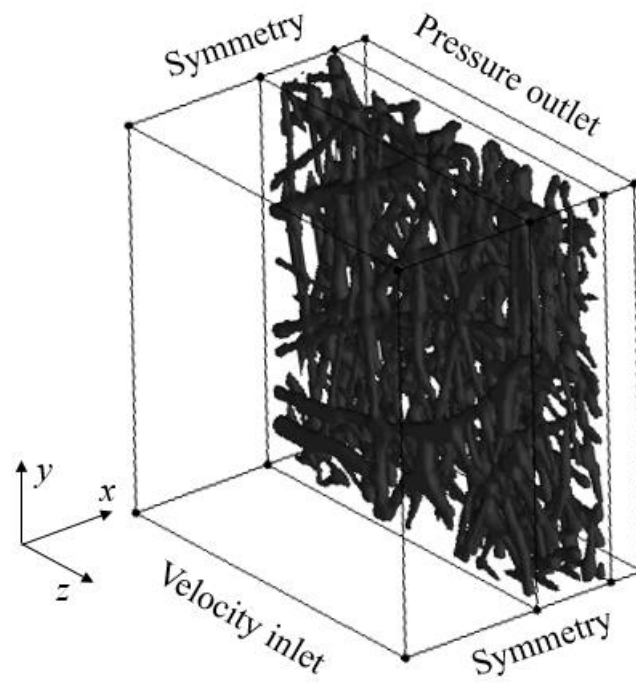
6

7

Fig. 5. Flow chart of the simulation models.

8

1



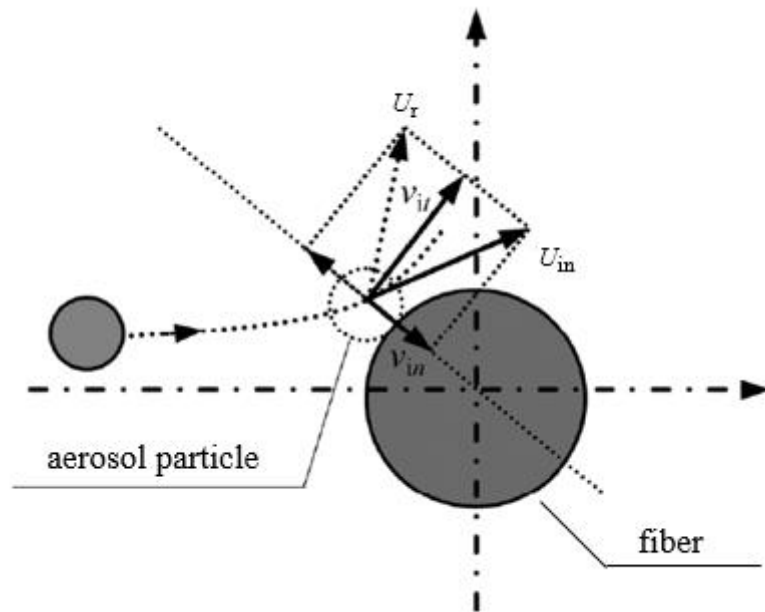
2

3

Fig. 6. Simulation domain and the boundary conditions.

4

1



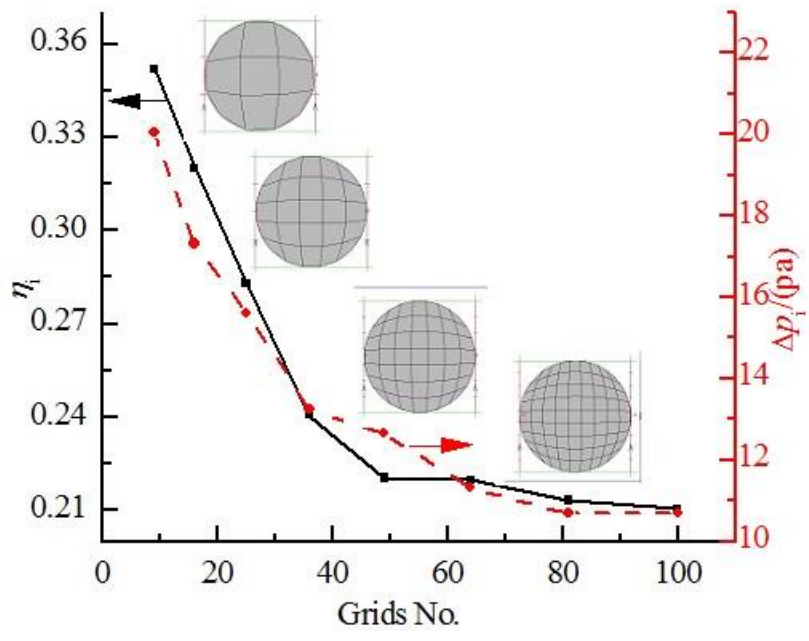
2

3

Fig. 7. Schematic of particle impact and rebound on collector surface.

4

1



2

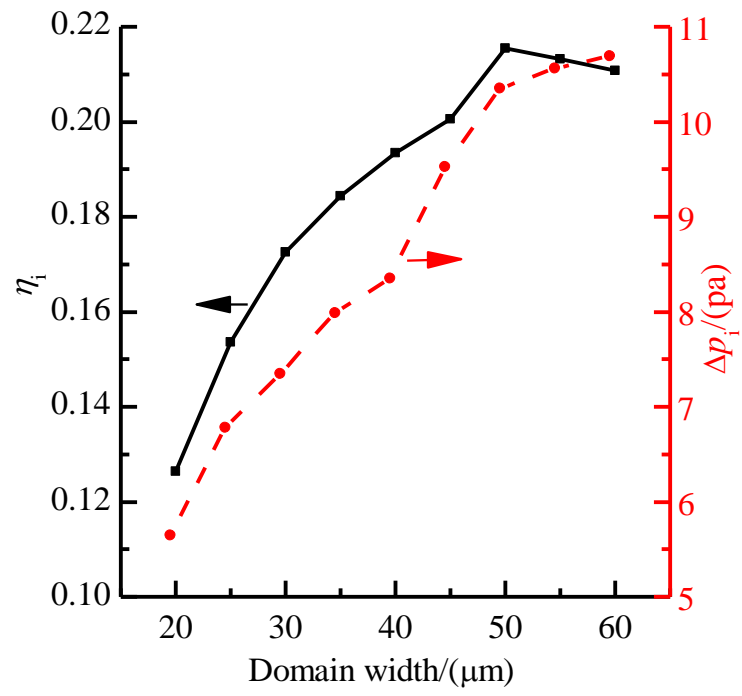
3

Fig. 8. Influence of mesh density on efficiency and pressure drop calculations.

4

5

1

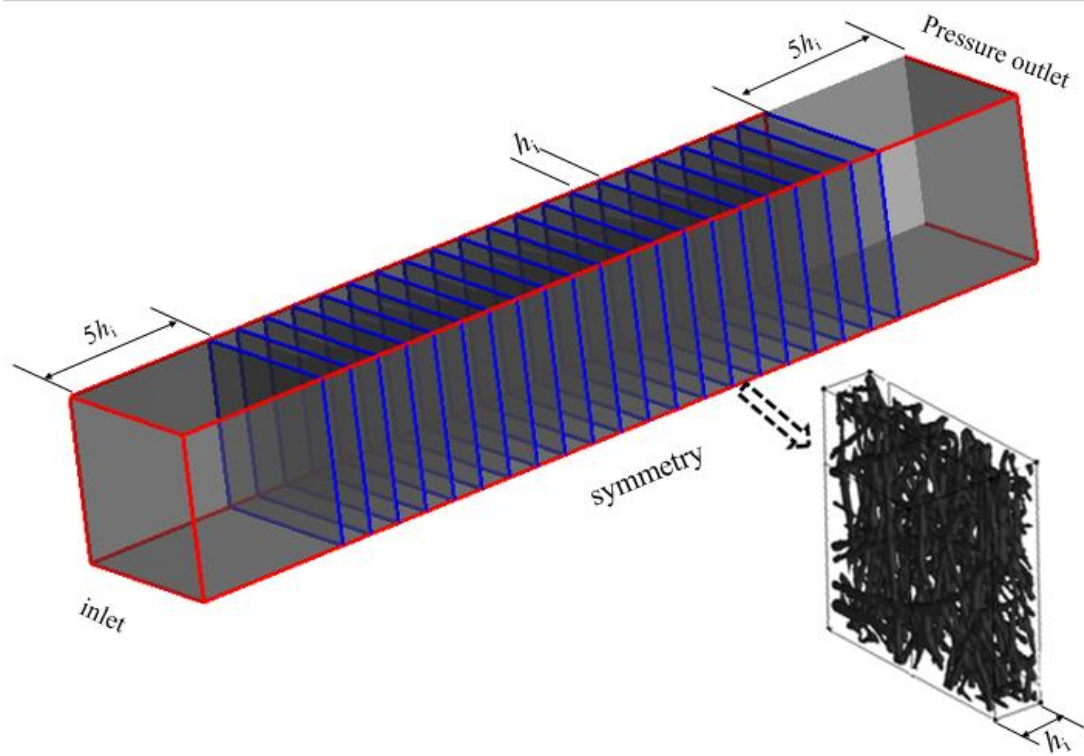


2

3 Fig. 9. Influence of domain width on efficiency and pressure drop calculations.

4

1



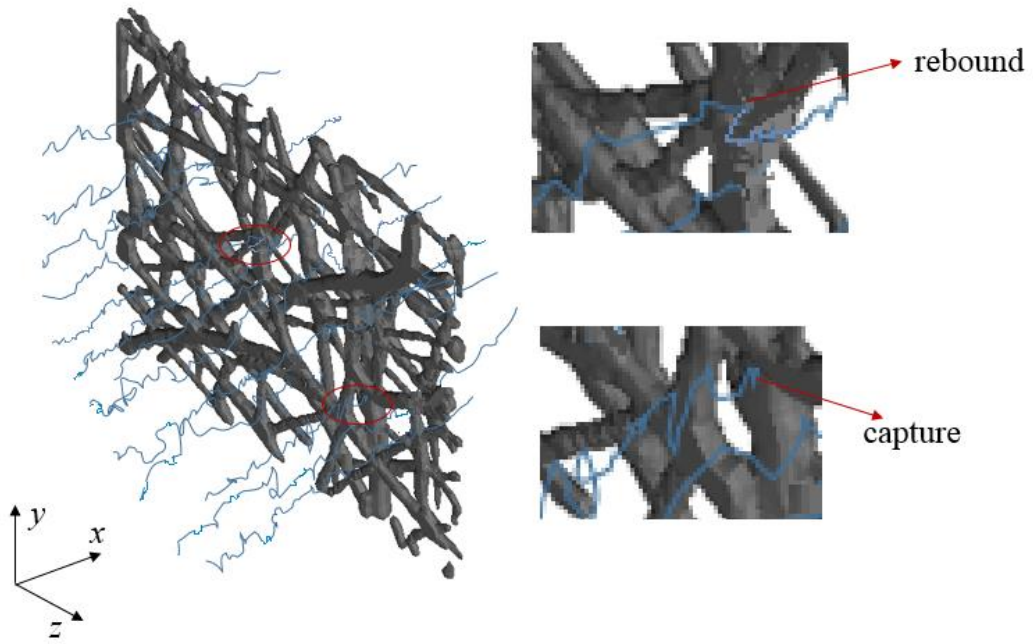
2

3

Fig. 10. Simulation domain of the filter with actual thickness.

4

1



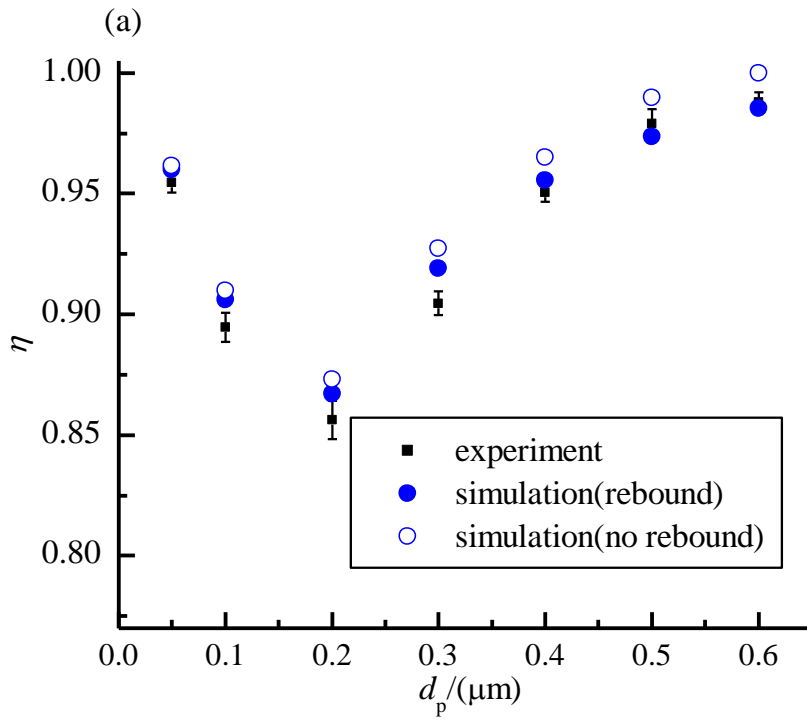
2

3

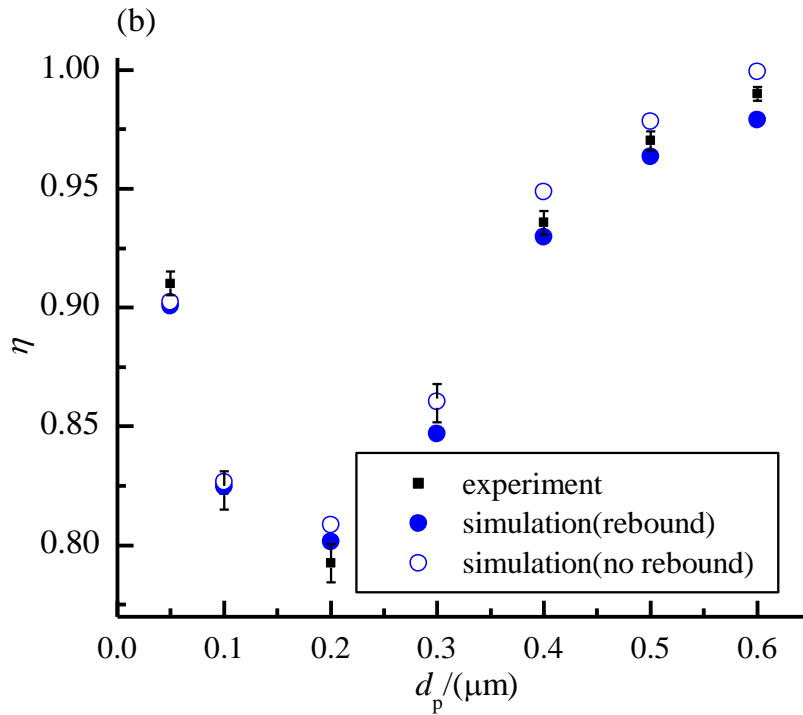
Fig. 11. Particle trajectory of a part of the filter for 0.4 μm diameter particles.

4

1



2

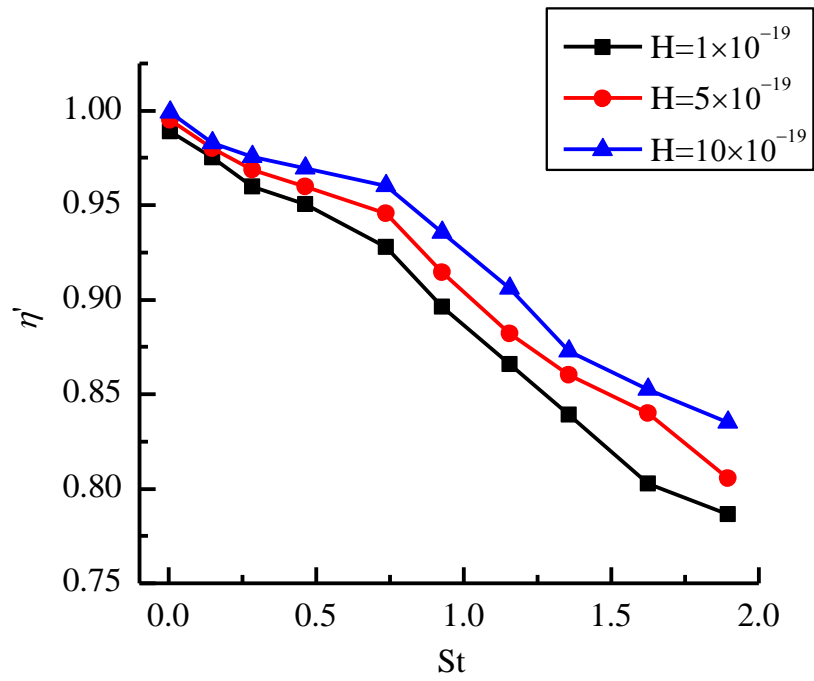


3

4 Fig. 12. Filtration efficiency calculation from simulation (with or without considering particle
5 bounce effect) compared with experimental data. (a) $U=0.40$ m/s, (b) $U=0.60$ m/s.

6

1



2

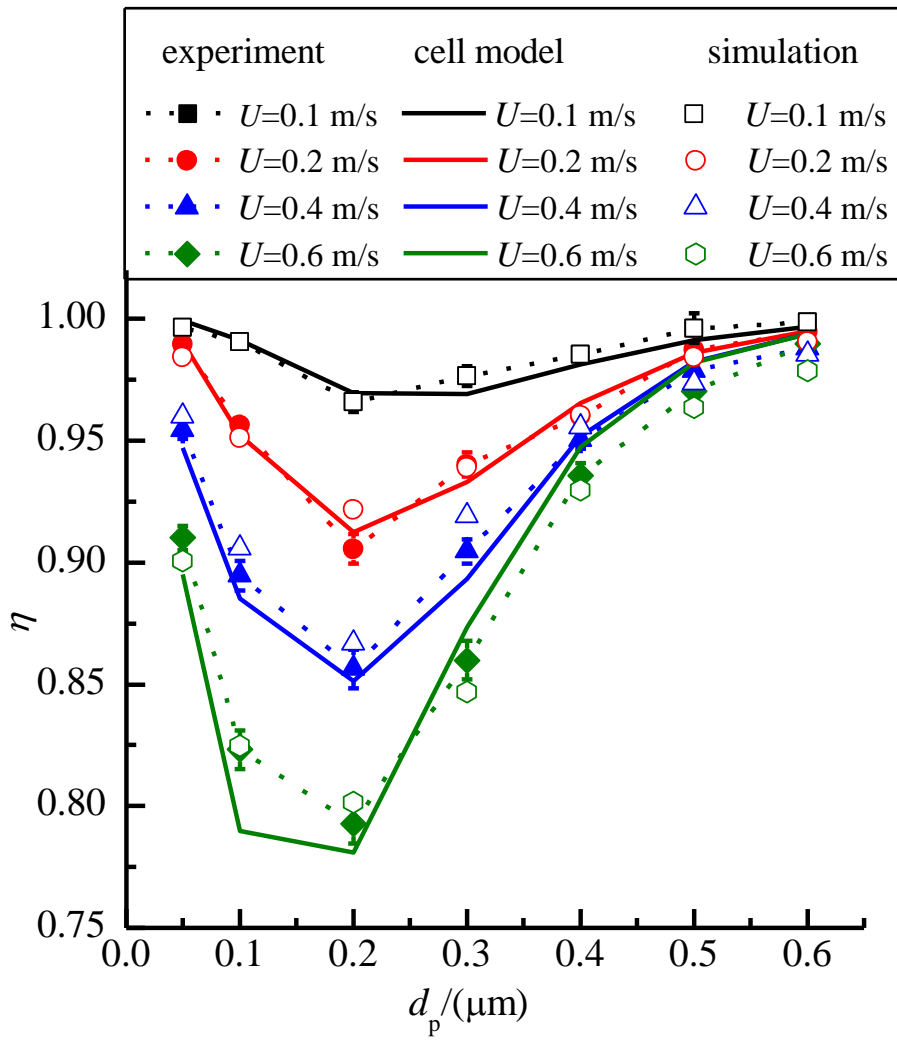
3 Fig. 13. The influence of Hamaker constant on the particle bounce and fiber efficiency.

4

5

6

1



2

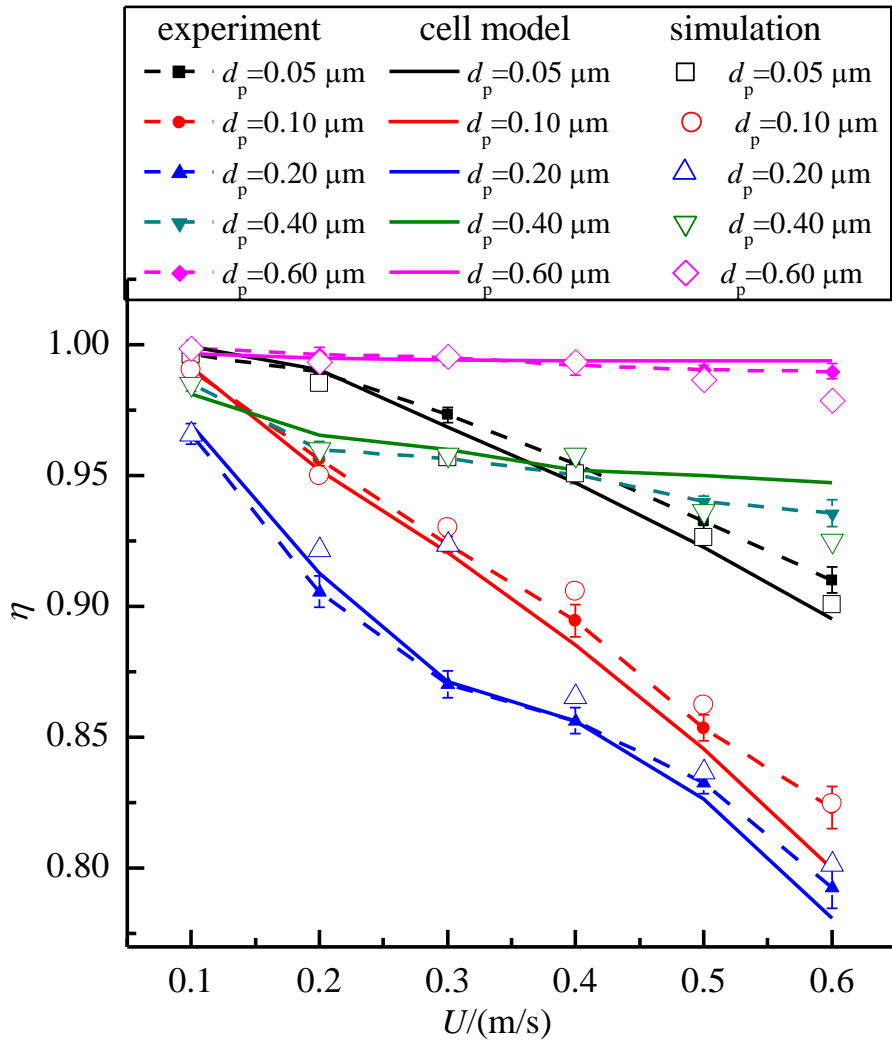
3

Fig. 14. Variations of filtration efficiency versus particle diameter.

4

5

1



2

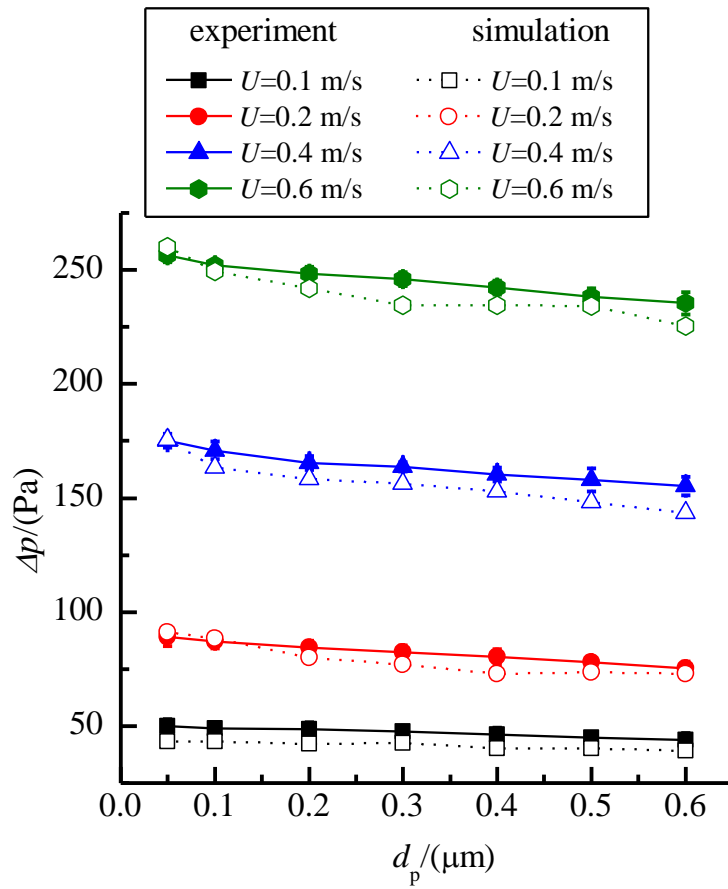
3

Fig. 15. Variations of filtration efficiency versus face velocity.

4

5

1



2

3

Fig. 16. Variations of pressure drop versus particle diameter and face velocity.

4

5

6