

Mechanism of allosteric regulation of β_2 -adrenergic receptor by cholesterol

Moutusi Manna¹, Miia Niemelä¹, Joonas Tynkkynen¹, Matti Javanainen^{1,2}, Waldemar Kulig^{1,2}, Daniel J Müller³, Tomasz Rog^{1,2}, Ilpo Vattulainen^{1,2,4*}

¹Department of Physics, Tampere University of Technology, Tampere, Finland; ²Department of Physics, University of Helsinki, Helsinki, Finland; ³Department of Biosystems Science and Engineering, ETH Zürich, Basel, Switzerland; ⁴MEMPHYS-Center for Biomembrane Physics, University of Southern Denmark, Odense, Denmark

Abstract There is evidence that lipids can be allosteric regulators of membrane protein structure and activation. However, there are no data showing how exactly the regulation emerges from specific lipid-protein interactions. Here we show in atomistic detail how the human β_2 -adrenergic receptor (β_2 AR) – a prototypical G protein-coupled receptor – is modulated by cholesterol in an allosteric fashion. Extensive atomistic simulations show that cholesterol regulates β_2 AR by limiting its conformational variability. The mechanism of action is based on the binding of cholesterol at specific high-affinity sites located near the transmembrane helices 5–7 of the receptor. The alternative mechanism, where the β_2 AR conformation would be modulated by membrane-mediated interactions, plays only a minor role. Cholesterol analogues also bind to cholesterol binding sites and impede the structural flexibility of β_2 AR, however cholesterol generates the strongest effect. The results highlight the capacity of lipids to regulate the conformation of membrane receptors through specific interactions.

DOI: [10.7554/eLife.18432.001](https://doi.org/10.7554/eLife.18432.001)

*For correspondence: Ilpo.Vattulainen@helsinki.fi

Competing interests: The authors declare that no competing interests exist.

Funding: See page 18

Received: 02 June 2016

Accepted: 28 November 2016

Published: 29 November 2016

Reviewing editor: Nir Ben-Tal, Tel Aviv University, Israel

© Copyright Manna et al. This article is distributed under the terms of the [Creative Commons Attribution License](https://creativecommons.org/licenses/by/4.0/), which permits unrestricted use and redistribution provided that the original author and source are credited.

Introduction

G protein-coupled receptors (GPCRs) are versatile signaling proteins that mediate diverse cellular responses. With over 800 members, GPCRs constitute the largest family of integral membrane proteins in human genome and represent roughly half of all drug targets in modern medicine (Gilchrist, 2010).

The human β_2 -adrenergic receptor (β_2 AR) is one of the best-characterized GPCRs. It is expressed in pulmonary and cardiac myocyte tissues and is a therapeutic target for asthma and heart failure (Lefkowitz, 2000). The functional diversity of β_2 AR is associated with its structural dynamics (Manglik and Kobilka, 2014; Kobilka, 2013). Recently found structures of β_2 AR in the inactive and active states have provided valuable insights into the structure-function relationship of β_2 AR (Cherezov et al., 2007; Hanson et al., 2008; Rasmussen et al., 2011). Subsequent biophysical and biochemical studies have provided direct evidences of multiple distinct conformational states for specific GPCRs, such as β_2 AR (Manglik and Kobilka, 2014; Kobilka, 2013; Nygaard et al., 2013). Meanwhile, molecular dynamics (MD) simulations have depicted the dynamic behavior of β_2 AR and have significantly enhanced our understanding of the activation mechanism of GPCRs (Dror et al., 2009; Ozcan et al., 2013; Dror et al., 2011). Intriguingly, it is now evident that the activation of GPCRs is modulated by lipids (Oates and Watts, 2011).

The lipid raft concept (Lingwood and Simons, 2010; Allen et al., 2007) essentially states that cell membranes include functional nanoscale domains where the function emerges from proteins whose structure and activation are modulated by lipids. However, despite a large body of research

eLife digest Proteins known as G protein-coupled receptors, or GPCRs for short, detect and respond to hormones and other signaling molecules found outside cells. A signaling molecule activates a GPCR by binding to it and causing the receptor to change its shape. This triggers a cascade of signals inside the cell that leads to the cell responding in a particular way. There are over 800 different GPCRs in human cells, making them the largest family of cell surface proteins.

GPCRs span the membrane that surrounds each cell. This membrane is made of molecules called lipids and previous studies have shown that many lipids are able to bind to GPCRs and influence their shape and activity. Lipids can cause these changes via so-called 'allosteric' regulation, in which the lipid binds to a site on the receptor that is separate to where the signal molecule binds. Lipid binding can either enhance or inhibit the activity of the receptor.

Human β_2 -adrenergic receptor is one of the best-studied GPCRs. It responds to a hormone called epinephrine (also known as adrenaline), which plays important roles in many organs in the body, including the heart and lungs. A lipid called cholesterol, which is plentiful in the cell membrane, can also bind to this receptor and influence its shape, but how this happens was not fully understood. Manna et al. now use computer simulations to analyze the interaction between cholesterol and β_2 -adrenergic receptor in more detail.

The simulations reveal that cholesterol makes the β_2 -adrenergic receptor less flexible so that it can only adopt certain shapes. This helps to stabilize both the inactive and active states of the receptor so that it is not as easy for the receptor to switch between them. The cholesterol molecules bind to specific sites on the receptor within the region of the protein that crosses the cell membrane.

The new findings of Manna et al. provide detailed insights into how cholesterol governs the shape and activity of the β_2 -adrenergic receptor. The next step is to extend this analysis to other types of lipids and GPCRs.

DOI: [10.7554/eLife.18432.002](https://doi.org/10.7554/eLife.18432.002)

data, direct substantiation of lipid-induced protein modulation remains limited. Contreras et al. showed that the COPI machinery protein p24 is recognized by a specific sphingomyelin (*Contreras et al., 2012*). Coskun et al. showed that monosialoganglioside GM3 influences the activation of the epidermal growth factor receptor (*Coskun et al., 2011*), however the mechanism is not known. Lipid modulation also holds to GPCRs (*Oates and Watts, 2011; Neale et al., 2015; Dawaliby et al., 2016*) in particular through cholesterol (*Oates and Watts, 2011; Paila and Chattopadhyay, 2009; Gimpl et al., 1997; Paila et al., 2011; Muth et al., 2011*), which changes the physical properties of cellular membranes and supports the dynamic assembly of nanoscale membrane domains (*Simons and Ikonen, 2000*).

The best known case is β_2 AR, which is a prototype of cholesterol-interacting GPCRs. β_2 AR belongs to the family of class A GPCRs. GPCRs belonging to this class show a high structural similarity and functional diversity. The literature reporting on the specific functional role of cholesterol and other lipids is extensive (*Pucadyil and Chattopadhyay, 2006; Gimpl, 2016*). It has been experimentally shown that cholesterol affects the conformation (*Muth et al., 2011; Casiraghi et al., 2016*) and function (*Gimpl et al., 1997; Paila et al., 2011; Pucadyil and Chattopadhyay, 2006; Casiraghi et al., 2016; Jafurulla et al., 2014*) of many GPCRs. Based on X-ray crystal structures cholesterol has specific contacts with β_2 AR (*Cherezov et al., 2007; Hanson et al., 2008*), suggesting that β_2 AR has binding sites for cholesterol. Spectroscopic (*Gater et al., 2014*) and MD simulation (*Cang et al., 2013; Prasanna et al., 2014; Lee et al., 2012*) studies have reported direct interactions between cholesterol and GPCRs, including β_2 AR. Experimental data show that cholesterol binding to β_2 AR changes its structural properties (*Hanson et al., 2008; Zocher et al., 2012*). Cholesterol is also necessary in crystallizing β_2 AR (*Cherezov et al., 2007; Hanson et al., 2008*), and cholesterol and its analogue cholesteryl hemisuccinate (CHS) have been exhibited to improve β_2 AR stability (*Zocher et al., 2012; Loll, 2014*). Since the structure and function of GPCRs are closely related, cholesterol binding specifically to β_2 AR is also expected to change the functional properties of the receptor. Indeed experimental studies indicate that cholesterol has a functional role in β_2 AR

(Paila et al., 2011; Pontier et al., 2008; Xiang et al., 2002). Further, inhibition of β_2 AR-associated signaling has been observed with increasing membrane cholesterol content (Pontier et al., 2008). However, as with GPCRs in general, the atomic-scale mechanism cholesterol uses to regulate β_2 AR is not known. Does cholesterol modulate β_2 AR activity through membrane-mediated effects by altering the physical properties of the membrane? Alternatively if regulation takes place through specific direct interactions, then what is the atom-scale mechanism?

We performed extensive atomistic MD simulations (totaling >100 μ s, **Table 1**) to clarify the mechanism responsible for the modulatory role of cholesterol on β_2 AR. In essence, we show that as cholesterol concentration reaches ~10 mol%, the conformational distribution of β_2 AR is drastically altered. The mechanism of action is based on the binding of cholesterol at specific high-affinity sites of the receptor.

Results

Cholesterol restricts β_2 AR conformation

We first studied the impact of cholesterol on the conformational distribution of β_2 AR by systematically increasing the cholesterol concentration from 0 to 40 mol% in a DOPC (1,2-dioleoyl-*sn*-glycero-3-phosphocholine) bilayer. Crystallographic studies and previous biophysical and biochemical studies have shown that helices 5–6 (H5–H6) (**Figure 1A**) constitute a highly dynamic region of β_2 AR (Kobilka, 2013). Upon activation, the most dramatic conformational change, which is conserved among many GPCRs, is a 7–14 Å outward movement of the intracellular end of H6 from the heptahelical core of the receptor (Manglik and Kobilka, 2014; Kobilka, 2013). The large rearrangement in the G protein-coupling interface is accompanied by a comparatively subtle change in the ligand-binding pocket. In a conformational change from the inactive to the active state β_2 AR, H5 (around S207^{5.46}) has been found to move inward by 2 Å to establish an optimal interaction between the agonist and the two anchor sites (D113^{3.32}/N312^{7.39} and S203^{5.42}/S204^{5.43}/S207^{5.46}) on the receptor (Kobilka, 2013).

In the present work where we started from the inactive structure of β_2 AR (Manna et al., 2015), we calculated the distance between the C α atoms of D113^{3.32} and S207^{5.46} (referred to as L_L) to measure the displacement of H5 in the ligand-binding site, and the distance between the C α atoms of R131^{3.50} and E268^{6.30} (referred to as L_G) to determine the displacement of H6 in the G protein-binding site (**Figure 1A**); the position of H3 does not change noticeably (RMSD < 0.8 Å) during the simulations. These two parameters (L_L and L_G) have been used in many previous studies to monitor changes in β_2 AR conformation (Manglik and Kobilka, 2014; Kobilka, 2013; Nygaard et al., 2013; Dror et al., 2009; Ozcan et al., 2013; Dror et al., 2011; Manna et al., 2015), thus here we discuss the conformational distribution of the receptor as a function of L_L and L_G (**Figure 1B,C** and **Figure 1—figure supplement 1**). In the inactive crystal structure, the L_L and L_G values are 12.07 and 11 Å, respectively (Hanson et al., 2008).

In a cholesterol-free DOPC bilayer, we find β_2 AR to adopt a wide range of conformations with L_L varying between ~11.5–17.5 Å and L_G ranging between ~7.5–12.5 Å (**Figure 1B**). The receptor populates two major conformational states. One of them has a relatively open G protein site (L_G being 10–12 Å) and a smaller ligand-binding site (L_L ~ 13 ± 1 Å). The other conformation is characterized by a shift of ~3–4 Å from the intracellular end of H6 towards the receptor core that blocks the G protein interface (L_G ~ 8.5 Å). At the same time, the ligand-binding pocket expands as the extracellular part of H5 moves ~4–5 Å away from H3 (L_L now ~16 ± 1 Å). This conformation represents an alternative inactive structure of the receptor, as both changes occur in the opposite direction compared to the case of agonist binding (Kobilka, 2013); we do not observe any transition to the active state of β_2 AR. **Figure 1D** shows the receptor oscillating between the different inactive conformations during 2.5 μ s. The closing of the intracellular G protein-binding surface is found to correlate with the opening of the extracellular ligand-binding pocket, and vice-versa (**Figure 1D**). The conformational correlation between the two distal sites supports the view of allosteric regulation in GPCRs (Kobilka, 2013; Ozcan et al., 2013).

In the presence of cholesterol, the picture changes quite dramatically. With a cholesterol concentration of 10 mol%, the conformational flexibility of β_2 AR reduces significantly (**Figure 1C**). The receptor stays predominantly in one conformation and no further opening of the ligand-binding site

Table 1. Descriptions of systems simulated: β_2 AR in bilayers with varying lipid compositions. 'Chol' stands for cholesterol.

Systems*	Initial lipid arrangement around β_2 AR	Lipids	Sterol mol %	No. of repeats [†]	Time (μ s) [‡]	
DOPC	Random	DOPC	0	3	3×2.5	
DOPC-active	Random	DOPC	0	3	3×2.5	
C H O L	Chol2	Random	DOPC + Chol 2	3	3×2.5	R A N D O M
	Chol5	Random	DOPC + Chol 5	3	3×2.5	
	Chol10	Random	DOPC + Chol 10	3	3×2.5	
	Chol25	Random	DOPC + Chol 25	2	2×2	
	Chol40	Random	DOPC + Chol 40	3	3×2.5	
	Chol40-active	Random	DOPC + Chol 40	3	3×2.5	
C H S	CHS10	Random	DOPC + CHS 10	2	2×2	
	CHS40	Random	DOPC + CHS 40	2	2×2	
	CHSA10 [A for anionic]	Random	DOPC + CHSA	1	2	
	CHSA40	Random	DOPC + CHSA	1	2	
O X Y S T E R O L	27-OH-Chol	Random [16 mol % Chol was randomly replaced by 27-OH-Chol]	DOPC + Chol + 27-OH-Chol	25 (4 mol% 27-OH-Chol + 21 mol % Chol)	3	2 + 1 + 1
	4 β -Chol	Random [16 mol% Chol was randomly replaced by 4 β -OH-Chol]	DOPC + Chol + 4 β -OH-Chol	25 (4 mol% 4 β -OH-Chol + 21 mol % Chol)	3	1 + 1 + 1
Chol-Bound [§]	8 cholesterol molecules bound at sites predicted by simulations	DOPC + Chol	1.9	3	3×2.5	B O U N D
Chol-IC1	2 Chol bound at IC1	DOPC + Chol	<1	2	2×2	
CHS-IC1	2 CHS bound at IC1	DOPC + CHS	<1	1	2	
CHSA-IC1	2 CHSA bound at IC1	DOPC + CHSA	<1	1	2	
PC-20:0–22:1 c13 [Double bond at carbon 13]	Random	PC-20:0–22:1 c13	0	3	3×1.5	
Pyrene20	Random	DOPC + 20 mol% pyrene	0	3	3×1.5	

*In the DOPC-active and Chol40-active systems, we used the active-state conformation of the receptor as the starting structure; for all the other systems, we used the inactive conformation.

[†]For systems with no sterols initially bound to β_2 AR, i.e., the systems which started with a random distribution of lipids, a number of different repeat simulations for each lipid composition were performed with different initial lipid arrangements around the receptor. For systems with sterols initially bound to β_2 AR (see[‡] and BOUND), different replicas were generated with different starting velocities.

[‡]Listed are the simulation times of production simulations; the equilibration time of the systems (100 ns) is not included.

[§]In the Chol-Bound system, eight cholesterol molecules were initially (at time zero of the simulation) bound at eight binding sites predicted by the present simulations, while the rest of the system had no cholesterol at all.

DOI: [10.7554/eLife.18432.003](https://doi.org/10.7554/eLife.18432.003)

or the opening/closing of the G protein-binding site is observed, unlike in a cholesterol-free membrane. As shown in **Figure 1E**, L_L and L_G fluctuate around ~ 13 and ~ 9.5 Å, respectively. The slowing down of the movements of H5 and H6 correlates with the observed high-density spots of cholesterol at these helices (IC2 and EC1 in **Figure 2** discussed in detail below). To further quantify this, **Figure 1F** depicts the standard deviation for the fluctuations of the intracellular and extracellular ends of H5 and H6, when these ends are bound or unbound to cholesterol. The data show that the deviations of these helices from their respective average positions are much smaller when they are

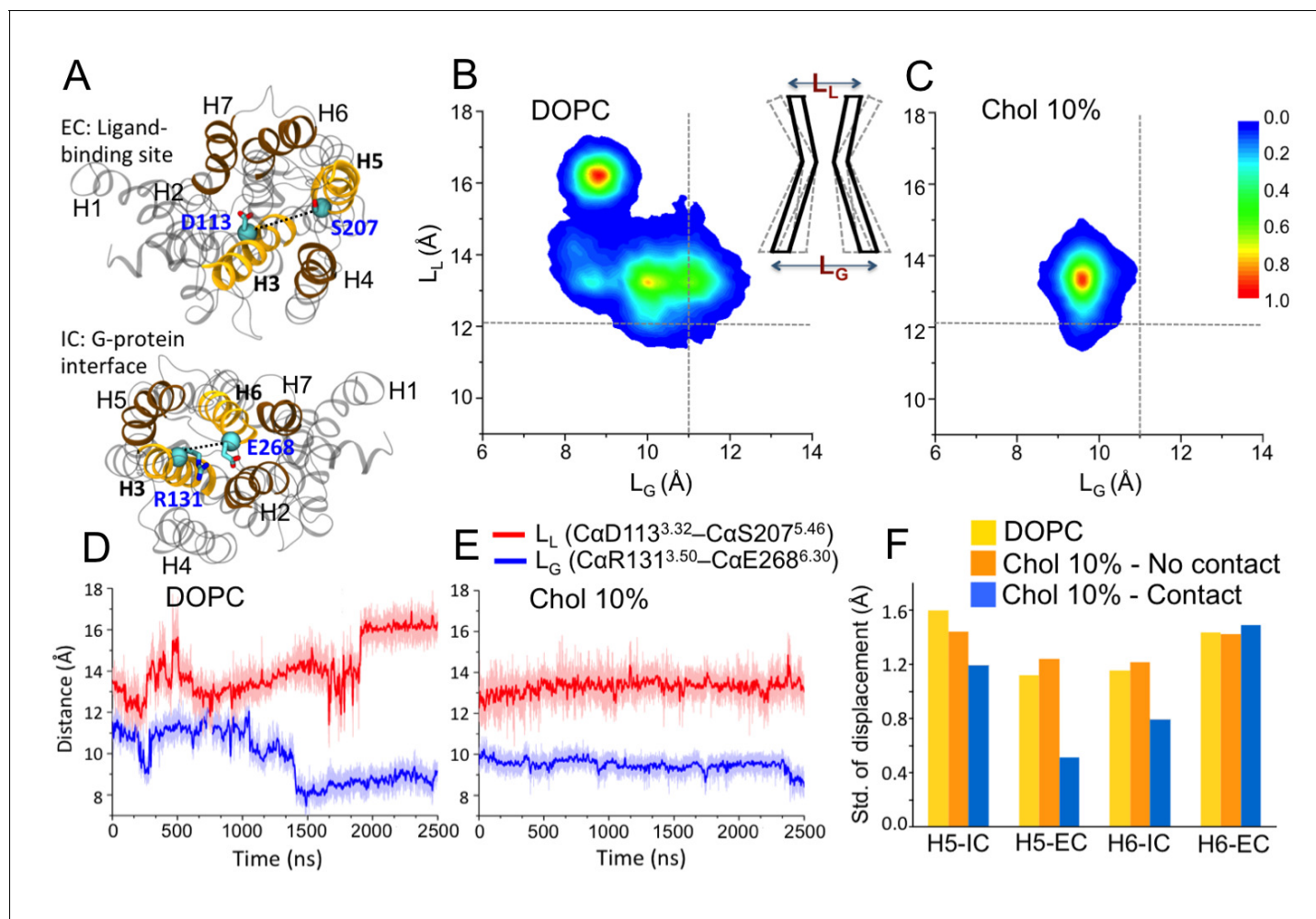


Figure 1. Conformational dynamics of β_2 AR. (A) The distances between the C α atoms of D113^{3.32}–S207^{5.46} (distance defined as L_L) and R131^{3.50}–E268^{6.30} (L_G) pairs used to measure the fluctuations at the ligand and G-protein binding sites, respectively. (B–C) The conformational distributions of β_2 AR in membranes with 0 and 10 mol% cholesterol (Chol) as a function of L_L and L_G . The gray dotted lines represent the corresponding L_L and L_G values in the inactive crystal structure of β_2 AR (Hanson *et al.*, 2008). The cartoon diagram shows the fluctuations of L_L and L_G at the ligand and G-protein binding sites of the receptor, respectively. (D–E) The time evolution of L_L (light red) and L_G (light blue) in systems with 0 and 10 mol% cholesterol. Corresponding 50-point running averages are shown in dark colors. (F) Standard deviation for the distribution of the distance between the intracellular (IC) (or extracellular (EC)) end of H5 and its average position, and its dependence on whether the given end of H5 is in contact with cholesterol or not; similarly for H6.

DOI: 10.7554/eLife.18432.004

The following figure supplement is available for figure 1:

Figure supplement 1. Conformational distributions of β_2 AR in lipid bilayers with various cholesterol (Chol) concentrations.

DOI: 10.7554/eLife.18432.005

bound to cholesterol. The effect is particularly strong for the extracellular end of H5 at the ligand-binding site and for the intracellular end of H6 at the G protein-binding site.

The restricted dynamics of β_2 AR is also observed at higher cholesterol concentrations (25 and 40 mol%; **Figure 1—figure supplement 1D,E**). In these cases, the receptor samples a similar conformational space as observed with 10 mol% cholesterol. At lower concentrations (2 and 5 mol%), the distribution of the receptor's conformation is much wider (**Figure 1—figure supplement 1A,B**). Particularly when the membrane contains a very small percentage of cholesterol (2 mol%), the range of conformations accessible to β_2 AR is almost comparable to that of a cholesterol-free membrane.

A broad conformational distribution (**Figure 1—figure supplement 1F**) is also observed in control simulations, where eight cholesterol molecules were initially placed at the cholesterol-binding sites

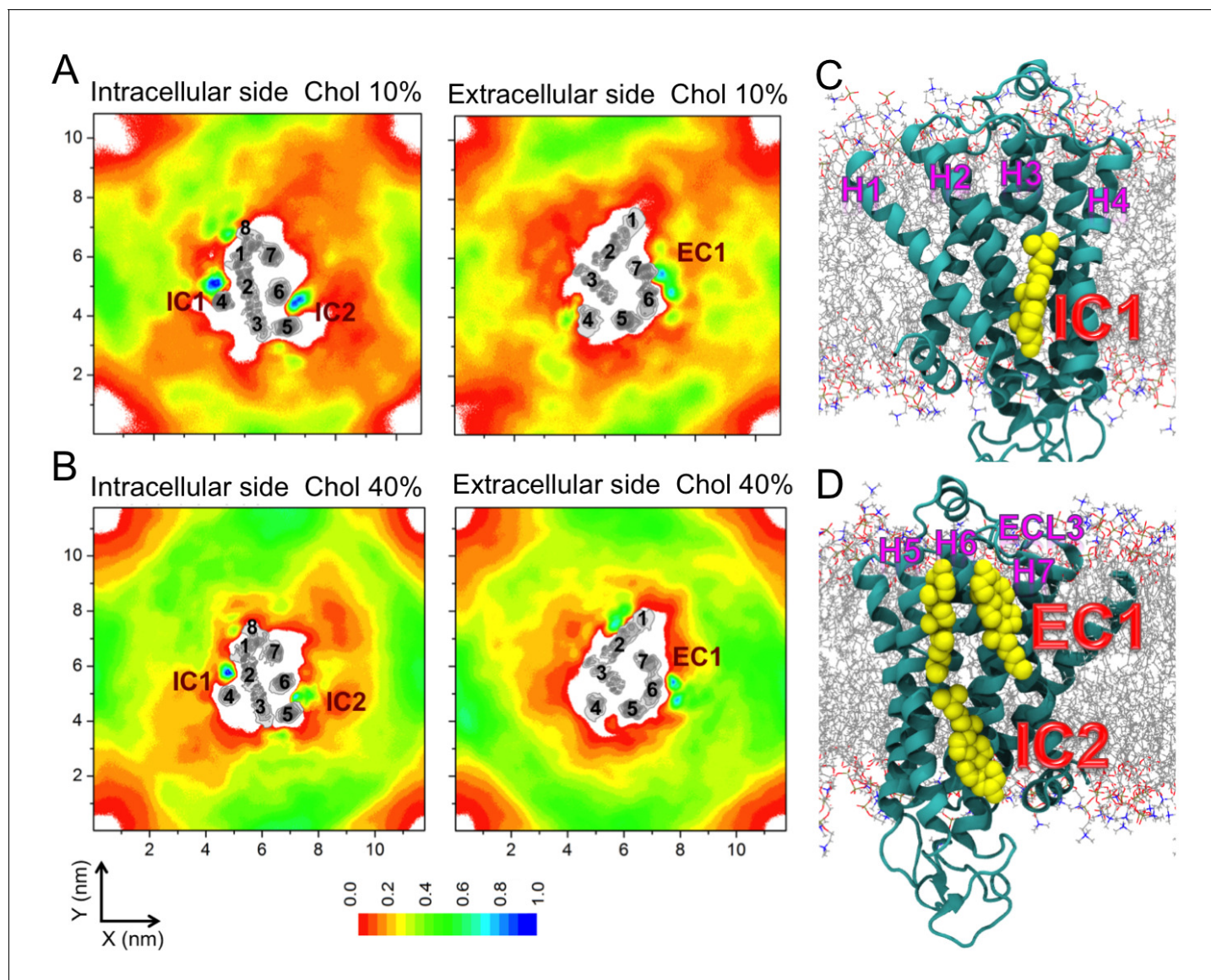


Figure 2. Cholesterol interaction sites on β_2 AR. (A–B) 2D number densities of cholesterol (Chol) around β_2 AR. The data are averaged over all independent trajectories for a given cholesterol concentration (Table 1) and normalized with respect to the maximum density for that particular cholesterol concentration. The intracellular (IC) and extracellular (EC) bilayer leaflets are depicted separately. The major cholesterol interaction sites (IC1, IC2 and EC1) are marked in the density plots. The IC and EC sides of the transmembrane regions (H1–H7) of β_2 AR are shown in gray scale (the darker the color, the higher is the number density) and numbered accordingly. (C–D) Cartoon representation of three main cholesterol interaction sites in β_2 AR. IC1 (H1–H4) and IC2 (H5–H6) are located on the intracellular side, and EC1 comprised of two closely placed cholesterols between H5–H6 and H6–ECL3–H7 is located on the extracellular side of β_2 AR.

DOI: [10.7554/eLife.18432.006](https://doi.org/10.7554/eLife.18432.006)

The following figure supplements are available for figure 2:

Figure supplement 1. Residues of β_2 AR involved in cholesterol binding, and cholesterol interaction sites on β_2 AR.

DOI: [10.7554/eLife.18432.007](https://doi.org/10.7554/eLife.18432.007)

Figure supplement 2. Sequence alignment of β_2 AR orthologues around the cholesterol-binding site IC1.

DOI: [10.7554/eLife.18432.008](https://doi.org/10.7554/eLife.18432.008)

Figure supplement 3. Sequence alignment of β_2 AR orthologues around the cholesterol-binding site IC2.

DOI: [10.7554/eLife.18432.009](https://doi.org/10.7554/eLife.18432.009)

Figure supplement 4. Sequence alignment of β_2 AR orthologues around the cholesterol-binding site EC1.

DOI: [10.7554/eLife.18432.010](https://doi.org/10.7554/eLife.18432.010)

Figure supplement 5. Cholesterol density around the receptor at low cholesterol concentrations.

DOI: [10.7554/eLife.18432.011](https://doi.org/10.7554/eLife.18432.011)

Figure 2 continued on next page

Figure 2 continued

Figure supplement 6. Structure of cholesterol analogues and properties of sterol-containing bilayers.

DOI: [10.7554/eLife.18432.012](https://doi.org/10.7554/eLife.18432.012)

Figure supplement 7. Interactions of cholesterol and cholesterol-like molecules with β_2 AR.

DOI: [10.7554/eLife.18432.013](https://doi.org/10.7554/eLife.18432.013)

Figure supplement 8. Densities of sterols around β_2 AR.

DOI: [10.7554/eLife.18432.014](https://doi.org/10.7554/eLife.18432.014)

Figure supplement 9. Conformational distributions of β_2 AR in lipid bilayers with different cholesterol analogues.

DOI: [10.7554/eLife.18432.015](https://doi.org/10.7554/eLife.18432.015)

Figure supplement 10. IC1 interaction site.

DOI: [10.7554/eLife.18432.016](https://doi.org/10.7554/eLife.18432.016)

of β_2 AR predicted by our simulations (see below), and this receptor-cholesterol complex was then embedded in a cholesterol-free membrane. Here (**Figure 1—figure supplement 1F**) the concentration of cholesterol in the annular region is therefore high in the beginning of the simulation, while it is zero elsewhere. Cholesterols dissociate from β_2 AR during the course of the simulation (discussed in detail below) and at long times the system corresponds to a dilute (cholesterol-poor) system, where the total average cholesterol concentration is low (1.9 mol%). One finds that as the data are averaged over the simulation period, the conformational behavior (**Figure 1—figure supplement 1F**) translates from cholesterol-rich (**Figure 1—figure supplement 1E**) to cholesterol-poor behavior (**Figure 1—figure supplement 1A,B**).

Further, we studied the effect of cholesterol on the active conformation of β_2 AR in its apo form in the absence of the G protein (*Rasmussen et al., 2011*). In the active state, the intracellular end of H6 is splayed outward from the helical bundle, providing room for the G protein (**Figure 3A**). We observe inward swinging of H6 towards H3 in the absence of cholesterol (which occurred in two out of three replica simulations). As shown in **Figure 3B,E**, the intracellular end of H6 spontaneously approaches H3 with L_G dropping from 18.97 Å in the starting active conformation to ~11.5 Å that is comparable to the crystallographically observed inactive conformation of β_2 AR ($L_G \sim 11$ Å) (*Hanson et al., 2008*). Such spontaneous deactivation of the receptor in the absence of the intracellular binding partner and cholesterol is in agreement with recent simulations (*Dror et al., 2011*; *Neale et al., 2015*) and experimental studies (*Rosenbaum et al., 2011*). Meanwhile, with 40 mol% cholesterol, we observe that the active-like open conformation is stable during the simulations (**Figure 3—figure supplement 1**). As shown in **Figure 3C,E**, the L_G value remains stable around 16.5 Å and no deactivation is observed unlike in cholesterol-free systems. Interestingly, here again we found a high cholesterol density at the intracellular segments of H5-H6 (IC2 in **Figure 3C,D,F** as discussed in detail below).

These results show that cholesterol restricts the intrinsic conformational dynamics of β_2 AR and governs changes between different conformational states, thereby modulating its function.

Specific binding of cholesterol

In all of the simulations (**Table 1**), cholesterol is observed to diffuse spontaneously to the receptor's surface. Time-averaged two-dimensional (2D) number density maps demonstrate that there are preferred cholesterol positions around β_2 AR (**Figure 2A,B**).

Localized cholesterol hot spots are often used as an indicator of potential cholesterol binding sites. We identify three such cholesterol interaction sites – two on the intracellular side (IC1 and IC2) and one on the extracellular side (EC1) (**Figure 2, Figure 2—figure supplement 1A,B**). Here we call them high-affinity sites since they reproducibly exhibit high cholesterol densities (normalized number density above 0.7) at different cholesterol concentrations (**Figure 2A,B**) and also have large lifetimes as the below discussion shows. IC1 is a shallow groove formed by the intracellular parts of transmembrane helices H1-H4 and coincides well with the location of cholesterol observed in the crystal structure of β_2 AR (*Cherezov et al., 2007*; *Hanson et al., 2008*). In IC2 cholesterol penetrates deep into the cleft between H5 and H6 on the intracellular side. A high density of cholesterol is observed at IC2 not only in the inactive but also in the active β_2 AR conformation (**Figure 3C,D,F**), which suggests that this site is biologically important.

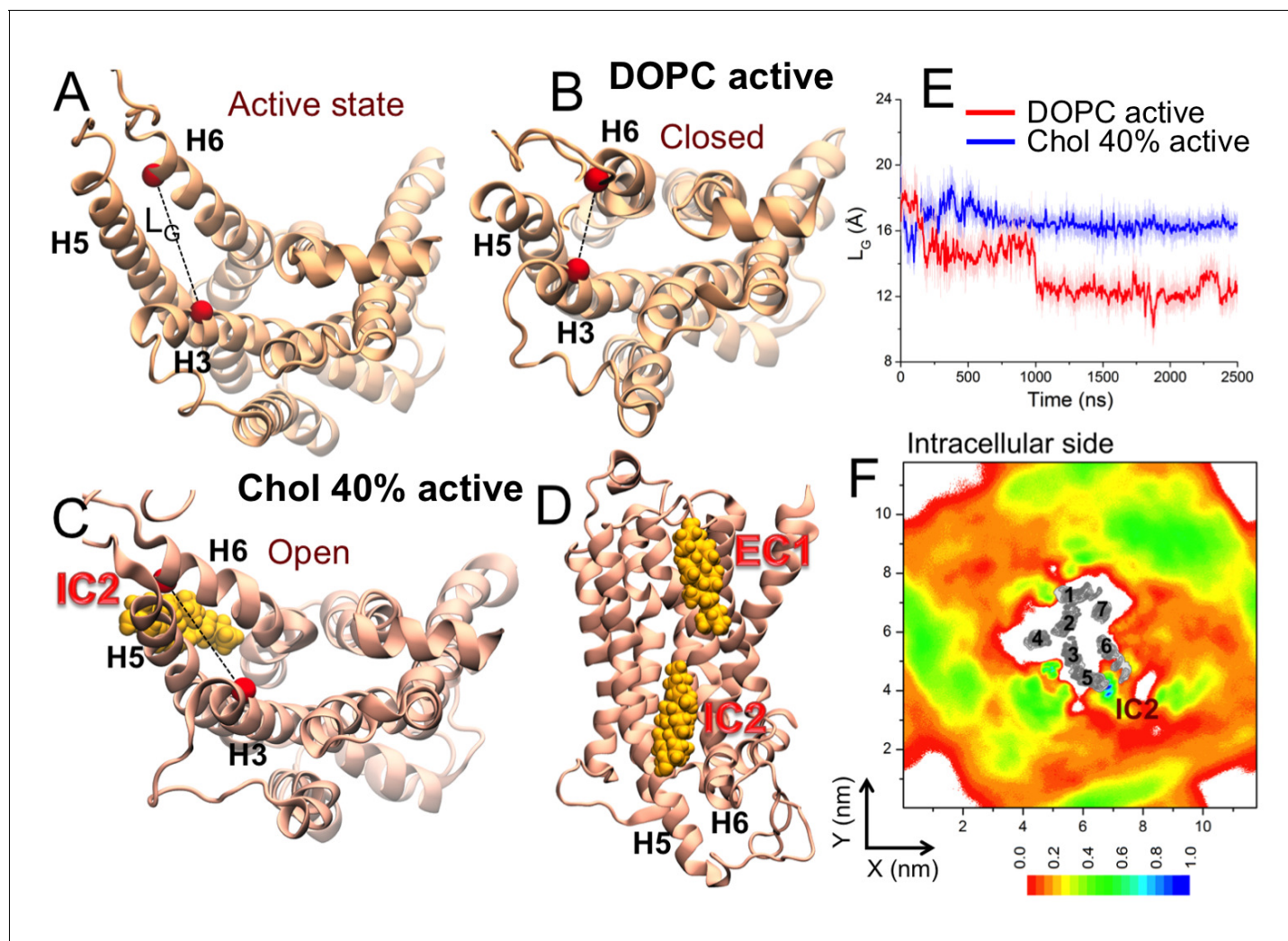


Figure 3. Effect of cholesterol on the active conformation of β_2 AR. Cytosolic view of β_2 AR (A) in the beginning of a simulation (active state) as well as in representative simulation snapshots in (B) a DOPC bilayer and (C) in the presence of 40 mol% cholesterol. The dotted line represents the distance between the C α atoms of R131^{3.50}–E268^{6.30} (defined as L_G), used to measure the fluctuation at the G protein-binding site. (D) Simulation snapshot (in the presence of 40 mol% cholesterol) showing cholesterol binding at the interaction sites of β_2 AR. (E) The time evolution of L_G in systems with 0 (light red) and 40 mol% cholesterol (light blue). Corresponding 50-point running averages are shown in dark colors (red, blue). (F) 2D number densities of cholesterol around β_2 AR (cytosolic view). The individual transmembrane helices of β_2 AR are numbered and shown in gray scale (as in **Figure 2A,B**).

DOI: [10.7554/eLife.18432.017](https://doi.org/10.7554/eLife.18432.017)

The following figure supplement is available for figure 3:

Figure supplement 1. Conformational distribution of β_2 AR starting from the active state.

DOI: [10.7554/eLife.18432.018](https://doi.org/10.7554/eLife.18432.018)

EC1 is comprised of two closely spaced cholesterol hot spots located in the extracellular part of H5–H6 and H6–ECL3–H7 (where ECL stands for the extracellular loop). The occupancy of two cholesterol molecules at EC1 is in good agreement with the crystal structure of the adenosine receptor A_{2A} AR (Liu *et al.*, 2012), while IC2 is so far unidentified among the experimentally determined structures (Gater *et al.*, 2014). Notably, the cholesterol binding residues of the three interaction sites are conserved to a large degree among β_2 AR orthologues (**Figure 2—figure supplement 2**, **Figure 2—figure supplement 3**, **Figure 2—figure supplement 4**), indicating that these sites have conserved during the evolution of the receptor. In addition, a few comparatively low-affinity cholesterol binding sites (IC3–4, EC2–3) with 10 and 40 mol% cholesterol are observed (**Figure 2—figure supplement 1**). When cholesterol concentration is lowered below 10 mol%, many of the interaction sites, particularly IC1 and EC1, are occupied by cholesterol at concentrations as low as 5 mol% (**Figure 2—figure**

supplement 5). A few sites (IC2 and EC1) are visited, though transiently, by cholesterol even at 2 mol% (**Figure 2—figure supplement 5**).

In addition to the above-discussed cholesterol hot spots, we observed two sites with comparatively weak cholesterol occupancies (reproducible at both 10 and 40 mol% cholesterol concentrations): IC3 between H3 and H5, and IC4 between H1 and H8, both on the intracellular side (**Figure 2A,B** and **Figure 2—figure supplement 1**). IC4 recaptures the predicted cholesterol position at the dimerization interface of β_2 AR found by X-ray crystallography (**Cherezov et al., 2007**). Besides these, another site with a low cholesterol density was observed near the extracellular part of H3-H4 (EC2) in the 10 mol% cholesterol system, and a high-density site was observed on the extracellular side of H1-H2-EC1 (EC3) in the 40 mol% cholesterol system (**Figure 2A,B**).

Concluding, we find cholesterol to bind to β_2 AR in specific binding sites. These sites are in agreement with those found in the crystallographic structures of GPCRs (**Cherezov et al., 2007; Hanson et al., 2008; Gimpl, 2016; Warne et al., 2011; Liu et al., 2012; Gater et al., 2014**).

Membrane-mediated interactions not the key

Is it possible that the effects we observed on β_2 AR conformation could be due to cholesterol-induced changes in membrane properties, and the changes in β_2 AR would hence not be due to the specific direct binding of cholesterol in the hot spots? To unlock this issue, we study the conformational properties of β_2 AR in cholesterol-free membranes whose physical properties (thickness, order, diffusion) match those of membranes with a large concentration of cholesterol.

- A. *Effect of increased bilayer thickness.* We studied β_2 AR embedded in a bilayer composed of long-chain mono-unsaturated phosphatidylcholine (PC) lipids PC-20:0/22:1 c13 (**Koynova and Caffrey, 1998**). The thickness of this membrane is larger than the thickness of a DOPC bilayer with 40 mol% cholesterol, while its lipid chain order is comparable to a DOPC bilayer with 5% cholesterol (**Figure 4—figure supplement 1A,B**). **Figure 4A** depicts that the increased bilayer thickness is unable to restrict the conformational dynamics of β_2 AR. The receptor just adjusts itself to the hydrophobic mismatch by inducing bilayer thinning (4–8 Å) in its vicinity (**Figure 4B**).
- B. *Effect of increased bilayer order.* We then studied β_2 AR placed in a DOPC bilayer with 20 mol% pyrene, which is known to induce similar (ordering and condensing) effects as cholesterol (**Curdová et al., 2007**). **Figure 4D** highlights that pyrene does not show any preference for specific binding on the β_2 AR surface except for the slowed-down diffusion of pyrene near the receptor surface. β_2 AR exhibits a very broad conformational distribution, with L_L and L_G fluctuating between ~9–17.5 and ~7–13.5 Å, respectively (**Figure 4C**). This conformational behavior of the receptor is distinctly different from the one induced by ≥ 10 mol% cholesterol, although the order of the pyrene-containing bilayer is similar to a DOPC bilayer with 10 mol% of cholesterol (**Figure 4—figure supplement 1D**).

Summarizing, the changes in physical membrane properties, similar to those induced by cholesterol, do not restrict the conformational dynamics of β_2 AR. We conclude that the cause of the observed changes in β_2 AR conformation and dynamics is the specific binding of cholesterol to β_2 AR.

Binding lifetime depends on cholesterol

When cholesterol is specifically bound to β_2 AR, how stable is the binding? **Figure 5** depicts the time-correlation function of cholesterol binding in the three main binding sites (IC1, IC2, EC1) on β_2 AR and shows that at low cholesterol concentrations (2–5 mol%) the binding lifetime is short, of the order of 100 ns or less. However, at ~10 mol% there is a clear transition to longer lifetimes (see **Video 1** and **Video 2**) given that the lifetime of binding increases to the microsecond time scale for 10 and 40 mol% cholesterol.

In three control simulations where cholesterol was initially bound at the eight cholesterol-binding sites identified in our simulations and no further cholesterol was in the bilayer (**Figure 5—figure supplement 1**), cholesterol underwent rapid unbinding from the majority of the binding sites in a timescale of tens to hundreds of nanoseconds (**Figure 5—figure supplement 1**), similarly to the short binding lifetime observed for cholesterol-poor systems (2 mol%, **Figure 5**). However, at a few sites cholesterol stayed for the entire simulation time (IC1 and IC2 in two out of three simulations) or dissociated in the μ s timescale (IC3 and EC3 in one simulation).

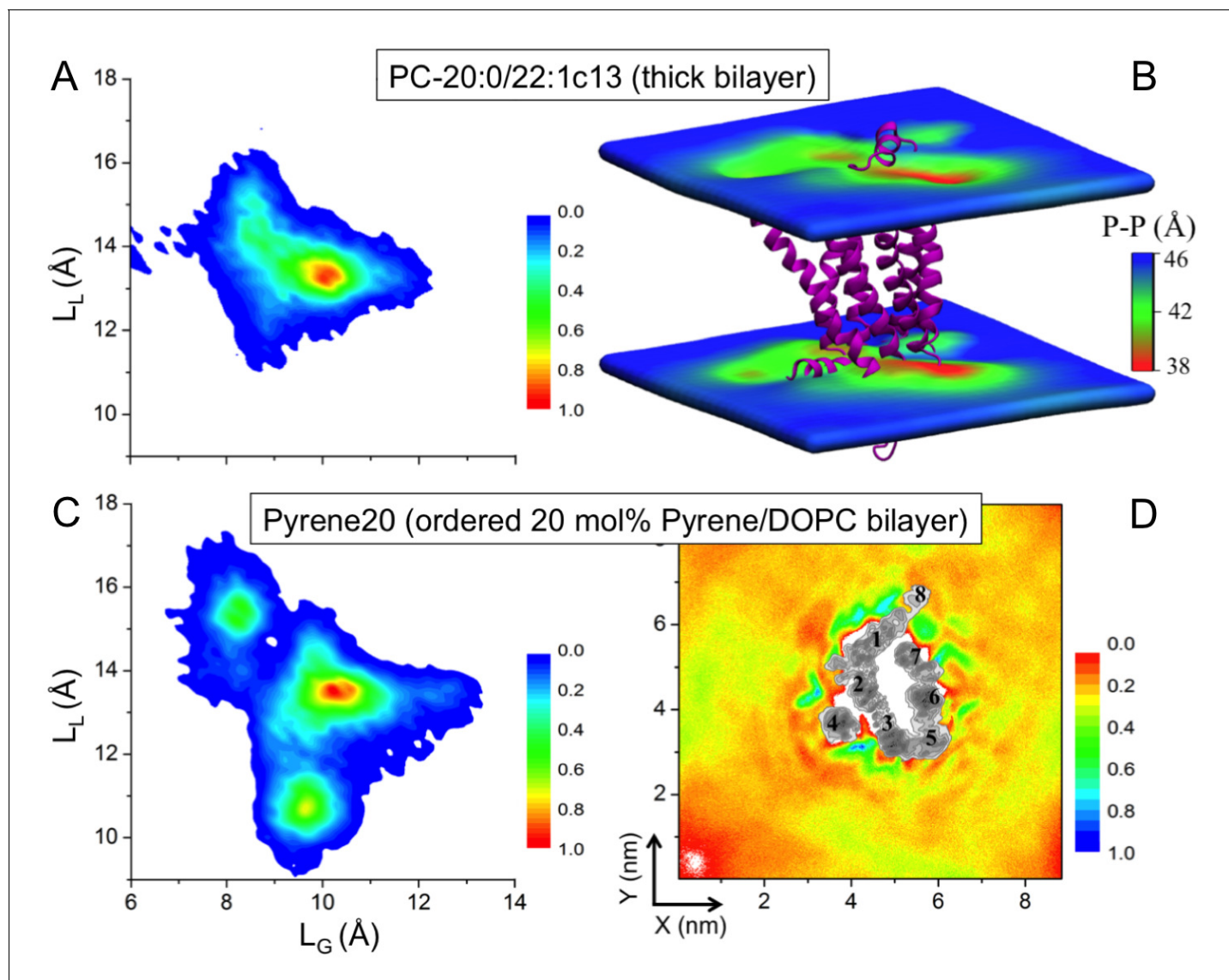


Figure 4. Impact of membrane-mediated effects on the β_2 AR conformation. The conformational distribution of β_2 AR in bilayers composed of (A) long-chain PC-20:0/22:1 c13 lipids and (C) DOPC with 20 mol% pyrene (Pyrene20). (B) 3D-distribution of bilayer thickness in the thicker PC-20:0/22:1 c13 membrane. The receptor is shown as a purple cartoon. (D) 2D number density of pyrene around β_2 AR.

DOI: [10.7554/eLife.18432.019](https://doi.org/10.7554/eLife.18432.019)

The following figure supplement is available for figure 4:

Figure supplement 1. Properties of thick and/or ordered cholesterol-free bilayers.

DOI: [10.7554/eLife.18432.020](https://doi.org/10.7554/eLife.18432.020)

The results show that the lifetime of cholesterol is of the order of microseconds in the high-affinity binding sites, where the lifetime at large cholesterol concentrations is largely independent of cholesterol concentration.

Cholesterol analogues interact with β_2 AR

We next explore how cholesterol analogues, in comparison to cholesterol, interact with β_2 AR. We focus on four different analogues (**Table 1**): (i-ii) cholesteryl hemisuccinate (CHS) and its deprotonated form (CHSA), and (iii-iv) two oxysterols, 4 β -hydroxycholesterol (4 β -OH-Chol) and 27-hydroxycholesterol (27-OH-Chol), oxidized at the cholesterol ring and tail, respectively (**Figure 2—figure supplement 6A**). As compared to cholesterol, CHS is a more water-soluble cholesterol ester and is

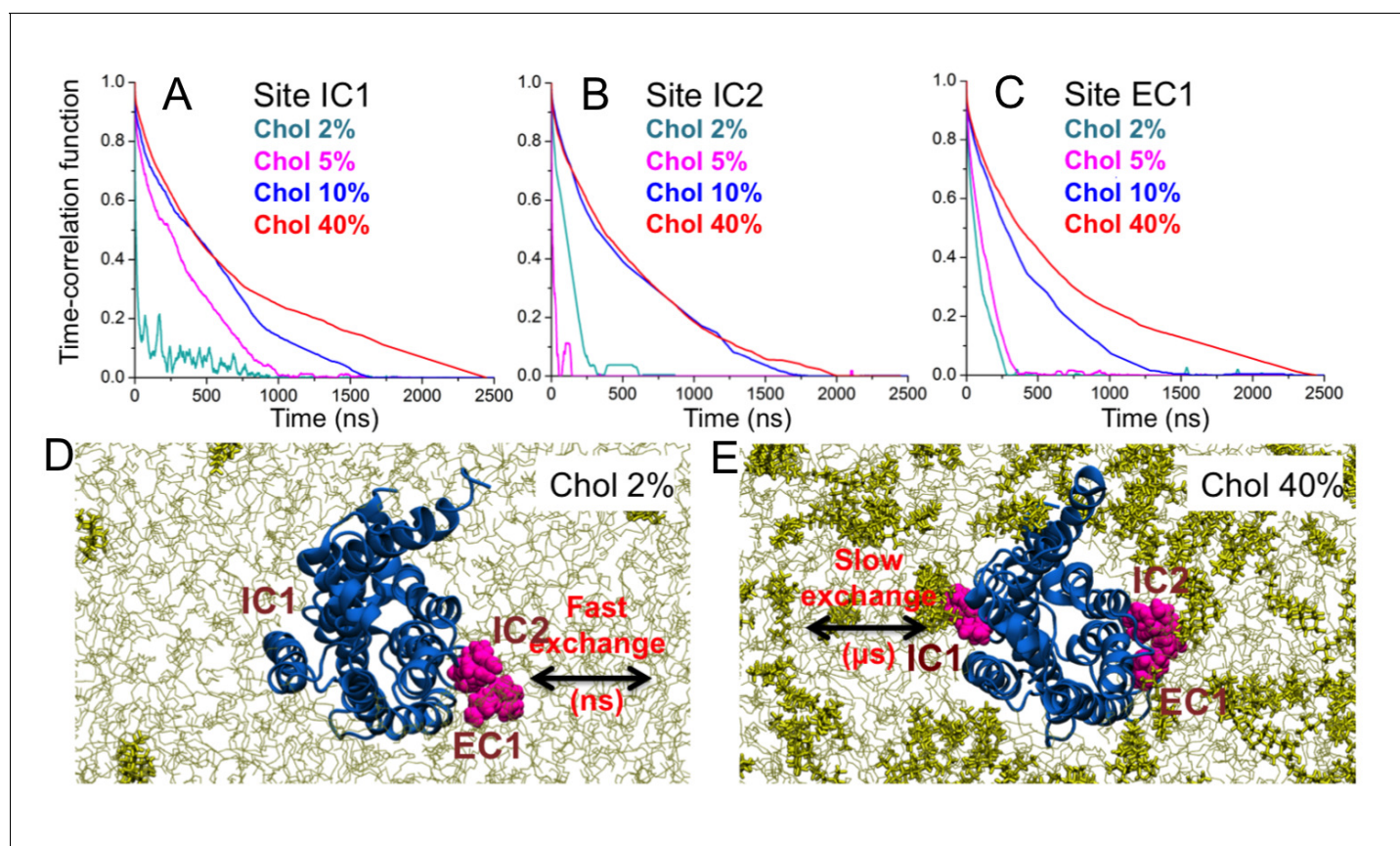


Figure 5. Binding time of cholesterol. (A–C) Time-correlation function of cholesterol (Chol) at the three major interaction sites (IC1, IC2, EC1) on the β_2 AR surface. Initially cholesterol is bound to the site (distance ≤ 0.5 nm) and the correlation function describes the probability that cholesterol remains bound to the given site for increasing time. Data are shown for DOPC-cholesterol membranes with 2, 5, 10, and 40 mol% of cholesterol. (D–E) Schematic representation showing the transition from fast to slow exchange as cholesterol concentration increases from 2 to 40 mol%. Color code: β_2 AR (blue), DOPC (thin grey lines), cholesterol molecules bound to the interaction sites (purple), and other cholesterol molecules not bound to the receptor (yellow sticks).

DOI: [10.7554/eLife.18432.021](https://doi.org/10.7554/eLife.18432.021)

The following figure supplement is available for figure 5:

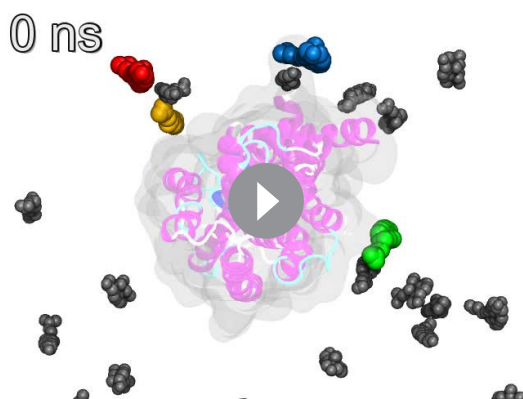
Figure supplement 1. Interaction of cholesterol with β_2 AR.

DOI: [10.7554/eLife.18432.022](https://doi.org/10.7554/eLife.18432.022)

widely used in structural biology and biophysical studies as a cholesterol analogue (Zocher *et al.*, 2012; Loll, 2014). Oxysterols, on the other hand, are derivatives of cholesterol with additional oxygen-containing substitutions at different positions of cholesterol (Olkkonen and Hynynen, 2009; Kulig *et al.*, 2015a; Neuvonen *et al.*, 2014). Due to the structural similarities with cholesterol, these analogues mimic cholesterol as to the effects on membrane properties (e.g., increasing bilayer order and thickness), although to different extents (Figure 2—figure supplement 6) (Kulig *et al.*, 2015a, 2015b).

CHSA is found to interact strongly with β_2 AR due to the enhanced electrostatic coupling resulting from its negatively charged head-group (Figure 2—figure supplement 7), however it favors to reside around the receptor at locations different from those of cholesterol (Figure 2—figure supplement 8A,B). Meanwhile, CHS closely mimics the behavior of cholesterol (Figure 2—figure supplement 7). Among the three major cholesterol interaction sites observed in our simulations, we find a very high CHS density at IC2 (Figure 2—figure supplement 8C–F). High occupancy of CHS is also observed near IC1 (at 40 mol% CHS concentration) but not at all at EC1. Occupancy of CHS at IC1 is consistent with the crystal structure of β_1 AR (Warne *et al.*, 2011).

4 β -OH-Chol interacts only weakly with β_2 AR (Figure 2—figure supplement 7). Almost all of the interaction sites on the receptor surface are occupied by cholesterol rather than 4 β -OH-Chol

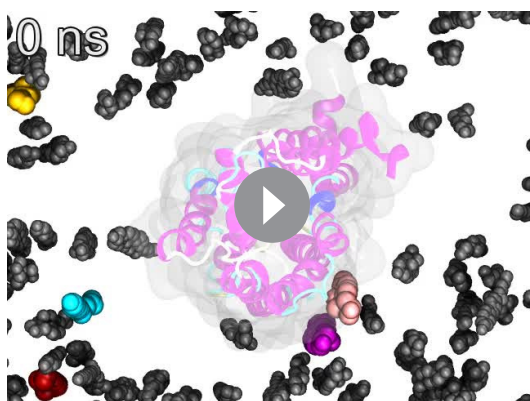


Video 1. Spontaneous binding/unbinding of cholesterol at the three main cholesterol interaction sites of β_2 AR during a 2.5- μ s simulation with 10 mol% of cholesterol. Cholesterols interacting at the cholesterol-binding sites are highlighted (yellow at IC1; green at IC2; and blue and red at EC1). Other cholesterols are shown in gray. For clarity, other lipids in a membrane are not shown.

DOI: [10.7554/eLife.18432.023](https://doi.org/10.7554/eLife.18432.023)

interaction reflects how strongly two molecules are in contact and therefore serves as an appropriate measure for the gravity of lipid-protein binding in the binding site.

The results in **Table 2** show that among the three major interaction sites, the binding of CHS at IC1 is much weaker than that of cholesterol. At IC2 the strength of interaction of CHS and cholesterol is comparable. Meanwhile, the extracellular EC1 site remains unoccupied by CHS indicating the binding energy to be low. As to the two oxysterols, 4 β -OH-Chol interacts with β_2 AR only at EC1 and



Video 2. Spontaneous binding/unbinding of cholesterol at the three main cholesterol interaction sites of β_2 AR during a 2.5- μ s simulation with 40 mol% of cholesterol. Cholesterols interacting at the cholesterol-binding interaction sites are highlighted (yellow and green at IC1; red, blue and orange at IC2; and pink, purple and cyan at EC1). Other cholesterols are shown in gray. For clarity, other lipids in a membrane are not shown.

DOI: [10.7554/eLife.18432.024](https://doi.org/10.7554/eLife.18432.024)

(**Figure 2—figure supplement 8G–J**). As a result, the average density maps, showing the lateral arrangement of these sterols around β_2 AR, are similar to those of 10 and 40 mol% cholesterol systems (**Figure 2A**), and reproducible. Unlike 4 β -OH-Chol, 27-OH-Chol prefers to interact with the receptor directly (**Figure 2—figure supplement 7**). For the IC1 site, 27-OH-Chol competes, though weakly, with cholesterol, while at EC1 and IC3, 27-OH-Chol exhibits preference over cholesterol (**Figure 2—figure supplement 8K–N**).

Altogether, our results show that also other cholesterol-like molecules interact with β_2 AR and may occupy the same binding sites on the receptor surface as cholesterol. However, the effects of cholesterol-analogues on β_2 AR are weaker compared to those induced by cholesterol (**Figure 2—figure supplement 9**). All the cholesterol analogues studied here have a rigid ring structure, yet their slightly different chemical compositions influence their occupancy as well as the strength of binding to the cholesterol-binding sites (**Table 2**). This is assessed here in terms of the van der Waals energy, which as a short-range

interaction reflects how strongly two molecules are in contact and therefore serves as an appropriate measure for the gravity of lipid-protein binding in the binding site. The results in **Table 2** show that among the three major interaction sites, the binding of CHS at IC1 is much weaker than that of cholesterol. At IC2 the strength of interaction of CHS and cholesterol is comparable. Meanwhile, the extracellular EC1 site remains unoccupied by CHS indicating the binding energy to be low. As to the two oxysterols, 4 β -OH-Chol interacts with β_2 AR only at EC1 and the interaction is weak, while 27-OH-Chol binds at EC1 as tightly as cholesterol, but its interaction at the two other binding sites (IC1 and IC2) is much weaker than in the case of cholesterol. Concluding, CHS interacts at IC2 as strongly as cholesterol but its interactions at IC1 and EC1 are negligible compared to those of cholesterol. The oxysterol 27-OH-Chol interacts at EC1 as strongly as cholesterol but its interactions at IC1 and IC2 are negligible compared to those of cholesterol. The oxysterol 4 β -OH-Chol does not interact with β_2 AR to a significant degree.

These data can be considered in the context of molecular structures. In CHS, the difference compared to cholesterol is the additional chain bridged to the cholesterol structure via an ester bond (**Figure 2—figure supplement 6A**). This additional chain does not interfere binding at IC2, but it does alter the binding at IC1 and EC1. In 27-OH-Chol, the oxidation has taken place in the short acyl chain that is the terminal subunit of the molecule. This does not interfere the binding at EC1 but does alter the binding at IC1 and IC2. Finally, in 4 β -OH-Chol, the oxidation has occurred in the rigid steroid moiety,

Table 2. Interactions* of sterols at the three high-affinity cholesterol-binding sites.

Cholesterol/Cholesterol analogue	High-affinity cholesterol interaction sites					
	IC1		IC2		EC1	
	vdW interaction energy (kJ/mol)	No. of contacts	vdW interaction energy (kJ/mol)	No. of contacts	vdW interaction energy (kJ/mol)	No. of contacts
Cholesterol [†]	-138.04 ± 0.20	141.02 ± 0.22	-95.06 ± 0.12	90.65 ± 0.16	-129.51 ± 0.29	104.38 ± 0.28
CHS	-29.63 ± 0.14	28.78 ± 0.16	-98.75 ± 0.11	96.30 ± 0.16	-	-
27-OH-Chol	-32.17 ± 0.30	34.95 ± 0.33	-22.69 ± 0.23	28.41 ± 0.28	-132.85 ± 0.27	120.20 ± 0.30
4β-OH-Chol	-	-	-	-	-41.80 ± 0.48	33.41 ± 0.42

* Shown are the total van der Waals (vdW) interaction energy and the number of contacts between cholesterol and β_2 AR, when cholesterol is in the IC1, IC2, or EC1 binding site (and similarly for the cholesterol analogues).

[†] Calculations are based on systems having ≥ 10 mol% cholesterol. Shown here are the average values over different trajectories.

DOI: [10.7554/eLife.18432.025](https://doi.org/10.7554/eLife.18432.025)

making the α -side of the molecule rougher. In cholesterol, the α -side is exceptionally flat. Given this change in surface roughness, and the importance of the surface-surface contact in lipid- β_2 AR binding in the binding site, it is quite obvious why this oxysterol does not bind to any of the cholesterol binding sites (IC1, IC2, EC1).

The results support the view that the restriction of β_2 AR dynamics arises from specific lipid binding to the receptor binding sites: the tighter the binding, the more is the receptor dynamics suppressed, and cholesterol induces the strongest effect.

Discussion

Our results show that cholesterol has a preference to bind to β_2 AR at specific locations on its surface. We identified three high-affinity cholesterol interaction sites in β_2 AR (**Figure 2C,D**): IC1 (at the cleft of H1-H4 on the intracellular side), IC2 (H5-H6 on the intracellular side), and EC1 (the H5-H6-ECL3-H7 region on the extracellular side). IC1 and EC1 are in agreement with the locations of cholesterol found in GPCR crystal structures (*Cherezov et al., 2007; Hanson et al., 2008; Liu et al., 2012*). IC1 contains a cholesterol consensus motif that predicts cholesterol binding for 44% of human class A receptors (*Hanson et al., 2008*). Moreover, these binding sites appear to be evolutionarily conserved in β_2 AR, which suggests their possible allosteric role in receptor function. A recent simulation study reported a correlation between cholesterol occupancy at IC1 and β_2 AR dimerization (*Prasanna et al., 2014*). However, not much is known about the functional relevance of cholesterol binding to the other sites of β_2 AR.

The present work for the inactive conformation of β_2 AR shows that cholesterol binding at IC2 and EC1 (**Figure 2C,D**) strongly influences the conformational dynamics of β_2 AR (**Figure 1**). In a cholesterol-free membrane the receptor samples multiple conformational states (**Figure 1B**) accounting for the high basal activity of β_2 AR (*Manglik and Kobilka, 2014; Kobilka, 2013*). Our results show that the presence of cholesterol in high densities around H5-H6-H7 impedes the dynamic nature of the receptor. In cholesterol-containing (≥ 10 mol% cholesterol) membranes (**Figure 1C** and **Figure 1—figure supplement 1D,E**), the overall structural flexibility of the receptor is significantly reduced to one predominant conformation. We observed that in the presence of strongly bound cholesterol, H5 and H6 undergo much smaller displacements from their average positions as compared to the situation without cholesterol (**Figure 1F**). Cholesterol analogues that occupy the same interaction sites also restrict the β_2 AR conformation (**Figure 2—figure supplement 9**), although their effects are weaker compared to those of cholesterol. Cholesterol or cholesterol-like molecules bound at these inter-helical clefts can thus confine the movement of the respective helices to a substantial degree, thus dampening the overall conformational dynamics of the receptor. At IC2 of inactive β_2 AR, cholesterol pushes the intracellular end of H6 more towards the core of the helical bundle and prevents the outward movement of H6 required for G protein binding. The restriction of H6 movement by cholesterol is a potentially important allosteric effect, which can be used to modulate the receptor activity.

Interestingly, our study on the active-state β_2 AR also exhibits a high cholesterol density at IC2 (**Figure 3D,F**). Here cholesterol bound at IC2 acts as a spacer between H5-H6 and restricts the movement of H6, thereby stabilizing the open active-like conformation of the receptor (**Figure 3D**), while in the absence of cholesterol the receptor is more prone to undergoing spontaneous deactivation (**Figure 3E**; **Figure 3—figure supplement 1**). This result supports the postulate that cholesterol restricts the conformational dynamics of the receptor by binding at specific interaction sites and governs changes between different receptor states, therefore modulating its function. Moreover, cholesterol binding at IC2 in both inactive and active states of β_2 AR as found in our simulations highlights the biological relevance of this interaction site in allosteric regulation of the receptor conformation.

The highly conserved IC1 site shows no major influence on the mobility of H5-H6. On the other hand, IC1 exerts a stabilizing effect on H4 (**Figure 2—figure supplement 10**), in agreement with experiments (**Hanson et al., 2008**). As H4 is one of the weakest points of the β_2 AR fold, its decreased mobility may account for the enhanced stability of the receptor.

Cholesterol modulates the physical properties of membranes by increasing the bilayer thickness and order, and slowing down the dynamics. These general membrane effects can also influence the dynamic nature of a membrane protein (**Manna and Mukhopadhyay, 2011**). However, here we found that membrane-mediated interactions do not affect β_2 AR conformation to a significant degree (**Figure 4**).

GPCRs are signaling machines that function by toggling between multiple conformers (**Latorraca et al., 2016**). The dynamic nature of GPCRs has made their crystallization process extremely challenging (**Kobilka, 2013**). Besides techniques like protein engineering and use of detergents to increase the intrinsic stability of the receptor (**Loll, 2014**), cholesterol/CHS has emerged as a necessary component for crystallization of many GPCRs, including β_2 AR (**Cherezov et al., 2007**; **Hanson et al., 2008**; **Zocher et al., 2012**; **Loll, 2014**). Our work shows that in the presence of more than ~10 mol% cholesterol, inactive β_2 AR partly loses conformational variability and populates just one major conformation. Achieving conformational homogeneity is the key to crystallize membrane proteins (**Loll, 2014**). In agreement with our results, a recent experimental study showed that CHS impacts the conformational dynamics of a GPCR leading to a restricted conformational space (**Casiraghi et al., 2016**). Earlier it was experimentally reported that cholesterol induces a more compact conformational state of the oxytocin receptor (**Muth et al., 2011**). Our results are also in agreement with a recent dynamic single-molecule force spectroscopic study, which showed that CHS strengthens interactions that stabilize the structural segments in β_2 AR and thereby considerably increase the kinetic, energetic, as well as the mechanical stability of the receptor (**Zocher et al., 2012**). In addition, the function of adrenergic receptors is known to be modulated by cholesterol: cholesterol depletion enhances β_2 AR-associated signaling, while increased cholesterol content inhibits signaling (**Paila et al., 2011**; **Pontier et al., 2008**).

To our knowledge, the results presented in this work provide the first atomic-scale picture of how lipids can govern the conformation of membrane receptors through direct lipid-protein interactions in specific lipid binding sites, and hence dictate the state of a receptor. The receptor-cholesterol interactions, such as those observed in our simulations for β_2 AR, can conceivably govern the signaling of many GPCRs in the given protein family.

Materials and methods

We performed all-atom molecular dynamics simulations of β_2 AR embedded in lipid bilayers with various lipid compositions (**Table 1**) using the GROMACS 4.6.x software package.

Force field parameters

All simulations were performed using the GROMACS 4.6.x package (**Berendsen et al., 1995**; **Hess et al., 2008**). The all-atom OPLS-AA (optimized potentials for liquid simulations) force field was used to parameterize the protein, ions, and pyrene (**Jorgensen et al., 1996**; **Kaminski et al., 2001**). Force field parameters for cholesterol, cholesteryl hemisuccinate, and oxysterols were taken from previously published papers (**Manna et al., 2015**; **Kulig et al., 2015a, 2015b, 2014**). For the studied phosphatidylcholines (DOPC and PC-20:0/22:1 c13), we used new torsional and Lennard-Jones parameters derived for saturated (**Maciejewski et al., 2014**) and unsaturated hydrocarbons (**Kulig et al., 2015c, 2016**) and the torsional potential developed for the glycerol backbone and the

phosphatidylcholine head group (Maciejewski *et al.*, 2014). The TIP3P model, which is compatible with the OPLS parameterization, was used for water molecules (Jorgensen *et al.*, 1983).

Simulation protocols

All simulations of the systems considered in this work (Table 1) were performed under the isobaric-isothermal (NpT) ensemble. A time step of 2 fs was used for integrating the equations of motion. Periodic boundary conditions were applied in all three directions of the system. The temperature of the system was maintained at 310 K by employing the v-rescale (stochastic velocity rescaling) thermostat (Bussi *et al.*, 2007) with a time constant of 0.1 ps. The temperatures of the receptor, lipids, and solvent molecules were controlled independently. The pressure of the system (1 bar) was maintained semi-isotropically using the Parrinello–Rahman barostat (Parrinello and Rahman, 1981) with a 1 ps time constant. The LINCS algorithm was applied to preserve hydrogen covalent bond lengths (Hess *et al.*, 1997). Lennard-Jones interactions were cutoff at 1.0 nm. The particle mesh Ewald (PME) method (Essmann *et al.*, 1995) was employed for long-range electrostatic interactions using a real space cutoff of 1.0 nm, β -spline interpolation (order of 6), and a direct sum tolerance of 10^{-6} .

Protein structure

The initial coordinates of β_2 AR were taken from our recently published work (Manna *et al.*, 2015), in which the structural modifications made for crystallization of the inactive β_2 AR structure [PDB id: 3D4S] (Hanson *et al.*, 2008) were reverted back to its original sequence. This inactive crystal structure of β_2 AR bound to the partially inverse agonist timolol was heavily engineered to facilitate crystallization (Hanson *et al.*, 2008). We reverted all the structural modifications from the experimentally determined structure, i.e., we removed mutations (E122^{3.41}W on the transmembrane helix H3 and the N187^{5.26}E mutation on the extracellular loop 2), removed the T4-lysozyme attached between the transmembrane helices 5 and 6, and replaced it with the missing intracellular loop 3. We did not attempt to model the unresolved N-terminal (32 residues) and C-terminal (71 residues) parts. The details of the procedure used to prepare the receptor model for our simulations are described elsewhere (Manna *et al.*, 2015). In the present work, we considered the apo-receptor (without a ligand), as we were interested in the intrinsic dynamics of β_2 AR.

For simulations with the active-state β_2 AR conformation, the starting structure was taken from the crystal structure of the receptor bound to an agonist and a Gs protein (Rasmussen *et al.*, 2011). Here again we considered the apo-form of the receptor without the ligand and the G protein. Additionally, we removed the lysozyme and modeled the missing loop regions (A176-H178 and F240-F264), but the mutations were kept as such.

System setup

We simulated β_2 AR embedded in a number of lipid bilayers (Table 1) with varying lipid composition. The lipid contents used in the studies were as follows:

- DOPC bilayers with different cholesterol (Chol) concentrations: 0, 2, 5, 10, 25, and 40 mol%.
- DOPC bilayers with a cholesterol analogue cholesteryl hemisuccinate (CHS; 10 and 40 mol%) or its deprotonated form CHSA (10 and 40 mol%). CHS is known to enhance the stability of GPCRs. It is frequently used for GPCR characterization (Zocher *et al.*, 2012; Yao and Kobilka, 2005).
- DOPC bilayers mixed with several sterols: 21 mol% cholesterol and 4 mol% oxidized sterol (4 β -hydroxy-cholesterol (4 β -OH-Chol) or 27-hydroxy-cholesterol (27-OH-Chol)). Oxysterols used in this study are among the most common oxysterols found in human serum (Olkkonen and Hynynen, 2009; Kulig *et al.*, 2015a).
- A single-component bilayer composed of the long-tail monounsaturated phospholipid PC-20:0/22:1 c13.
- DOPC bilayers with 20 mol% pyrene.

The lipid bilayers (without β_2 AR) were constructed using in-house scripts, and they were subsequently solvated with water. These lipid bilayers were then equilibrated for 100–200 ns.

Next, β_2 AR was placed into the above-mentioned pre-equilibrated bilayers in such a manner that the lipid arrangement around the receptor was completely random and that there was no cholesterol or cholesterol analogue initially bound to β_2 AR. For incorporating the receptor into a pre-

equilibrated lipid bilayer, we followed our recently published method, where the receptor was pushed into a lipid membrane from its side by applying a high lateral pressure on the system (Javanainen, 2014).

Each system contained one β_2 AR and 256–512 lipids. Each of the systems was explicitly solvated by water. In all cases, counterions (8 Cl^- ions for β_2 AR, and additional Na^+ counter ions for bilayers containing the anionic CHSA) were added to maintain electroneutrality of the systems. NaCl salt was added to achieve the physiological salt concentration of 150 mM. Subsequently each system was energy minimized and then equilibrated in two stages with position restraints first on protein heavy atoms and then on the backbone. Following equilibration (100 ns), all restraints were released and the equilibrated systems were subjected to microsecond length (1–2.5 μs) production simulations. Multiple independent simulations were performed for each lipid composition, either by starting from a different lipid arrangement around β_2 AR (for systems with no sterols initially bound to the receptor) or starting with different initial velocities (for systems with sterols initially bound to the receptor).

Additional simulations were performed where cholesterol or its analogues were initially attached to certain locations on the surface of the receptor, and this receptor-lipid complex was then embedded to a cholesterol-free DOPC bilayer. Here we performed two sets of control simulations. In one set of simulations, two cholesterol or CHS (neutral or anionic) molecules were bound at the cleft formed by the intracellular side of the transmembrane helices H1-4 as predicted from the crystal structure (Hanson *et al.*, 2008). In another set of control simulations, cholesterol molecules were initially bound at the eight interaction sites of β_2 AR predicted by our simulations (see discussion in the main article). The simulation conditions (as to counterions and salt, release of restraints, simulation times, etc.) were as described above.

The systems investigated in this study are summarized in **Table 1**. The total simulation time for the atomistic systems studied in this work covers a period of more than 100 μs .

Analysis of helix deviation

For calculation of deviations of helix ends, we first calculated their time series of X, Y, and Z coordinates. The coordinates were then divided into two groups based on whether the upper and lower halves of the helices (backbone atoms) were in contact (≤ 0.5 nm) with cholesterol (heavy atom) or not. Separately in each group, the distance from the average point of the group at each time frame (say i^{th} frame) was calculated by:

$$d_i^2 = (x_i - x_g)^2 + (y_i - y_g)^2 + (z_i - z_g)^2,$$

where x_i, y_i, z_i were the coordinates of the i^{th} frame, and x_g, y_g, z_g were the average values. The standard deviation of each group was then calculated by:

$$\sigma = \sqrt{\frac{1}{N_g} \sum_{i=1}^{N_g} d_i^2}$$

The average standard deviation of different simulations was calculated as a weighted average depending on the number of frames (N_g) of the group in each simulation.

Two-dimensional (2D) number density map

The 2D number density maps were calculated using the `g_densmap` tool of GROMACS. The two bilayer leaflets were calculated separately. The output was then processed (using an in-house script) to normalize the maximum number density to one. We calculated the 2D number densities of cholesterol (non-hydrogen atoms) and β_2 AR (backbone atoms of transmembrane region) separately.

Cholesterol occupancy time per residue

A residue of β_2 AR was considered to be in contact with cholesterol, when any of its non-hydrogen atoms was within ≤ 0.5 nm of any heavy atom of cholesterol. The total occupancy time was then normalized over the entire length of a simulation, i.e., an occupancy time of one means that the particular residue of β_2 AR was in contact with cholesterol throughout the simulation, whereas a value of zero means no contact. The calculated total occupancy time per residue of β_2 AR was mapped onto the receptor's surface to highlight the regions of β_2 AR involved in cholesterol binding.

Sequence alignment at cholesterol-binding sites

We analyzed amino acid sequences of β_2 AR orthologues from the available databases. We used the PhylomeDB server (<http://phylomedb.org/>) (Huerta-Cepas et al., 2014) for finding orthologues and Clustal Omega (<http://www.ebi.ac.uk/Tools/msa/clustalo/>) (Sievers et al., 2011) for sequence alignment. The amino acid residues of β_2 AR segments constituting the cholesterol binding sites as obtained from our simulations were used for the set of sequences obtained (Figure 2—figure supplement 2, Figure 2—figure supplement 3, Figure 2—figure supplement 4). The sequences in question belong to diverse species, such as insects, fish, birds, reptile, mammals, etc.

Lipid tail order parameter

The order parameter of lipid acyl chains was calculated using :

$$S_{CD} = \left\langle \frac{3}{2} (\cos^2 \theta_i) - \frac{1}{2} \right\rangle$$

where θ_i is the angle between a C-D bond (C-H in simulations) of the i^{th} carbon atom and the bilayer normal. The angular brackets denote averaging over time and molecules in a bilayer.

Bilayer thickness

Bilayer thickness was defined as the distance between the average planes formed by phosphorous atoms in the two bilayer leaflets. We used the g_lomepro tool (Gapsys et al., 2013) to generate the 2D distribution of bilayer thickness.

Lifetime of cholesterol binding

For the calculation of the lifetime of cholesterol bound to the cholesterol interaction sites on the receptor surface, we first monitored the binding/unbinding events of each individual cholesterol molecule along the simulation trajectory. A cholesterol molecule was considered bound when any of its heavy atoms came within ≤ 0.5 nm from an interaction site. To define the three major interaction sites on the β_2 AR surface, we used the amino acid residues (with contact fraction ≥ 0.4) as shown in Figure 2—figure supplement 2. The time series was then additionally smoothed (over one ns time windows) to discard very rapid 'leave and return' motions of cholesterol that take place due to thermal fluctuations. Given that lateral diffusion of lipids at the protein surface is very slow, and the lipids essentially do not move at all during a 1-ns time window, these fluctuations were then taken care of by the smoothing procedure. We then calculated the normalized time correlation function (to describe the time-dependent probability of cholesterol that is next to the receptor to stay in contact with the receptor) over all individual cholesterol binding/unbinding events occurred in all independent simulation trajectories for all cholesterol molecules present in a system at a given cholesterol concentration (Arnarez et al., 2013; Horn et al., 2014).

Equilibration and error bar estimation associated with analysis

For all analysis to measure time-averaged properties, the first 100 ns of production simulations were excluded from the calculation. Error bars were estimated through standard error, calculated by dividing the standard deviation of a given data set with the square root of its sample size (Manna et al., 2015; Kulig et al., 2014). We used the g_analyze tool of GROMACS for error estimation.

Acknowledgements

Dr. Maria Kalimeri is thanked for discussions. CSC – Finnish IT Center for Scientific Computing (Espoo, Finland) and PRACE through the HLRS High-Performance Computing Center (Stuttgart, Germany) are acknowledged for computer resources. European Research Council (Advanced Grant project CROWDED-PRO-LIPIDS) and the Academy of Finland (Centre of Excellence program) are thanked for financial support.

Additional information

Funding

Funder	Grant reference number	Author
European Research Council	290974	Moutusi Manna Waldemar Kulig Tomasz Rog Ilpo Vattulainen
Suomen Akatemia	272130	Moutusi Manna Joonas Tynkkynen Matti Javanainen Waldemar Kulig Tomasz Rog Ilpo Vattulainen

The funders had no role in study design, data collection and interpretation, or the decision to submit the work for publication.

Author contributions

MM, Conception and design, Acquisition of data, Analysis and interpretation of data, Drafting or revising the article; MN, JT, Acquisition of data, Analysis and interpretation of data; MJ, Acquisition of data, Drafting or revising the article, Contributed unpublished essential data or reagents; WK, Analysis and interpretation of data, Drafting or revising the article; DJM, Conception and design, Drafting or revising the article; TR, IV, Conception and design, Analysis and interpretation of data, Drafting or revising the article

Author ORCIDs

Moutusi Manna, <http://orcid.org/0000-0001-9472-1594>

Matti Javanainen, <http://orcid.org/0000-0003-4858-364X>

Ilpo Vattulainen, <http://orcid.org/0000-0001-7408-3214>

References

- Allen JA, Halverson-Tamboli RA, Rasenick MM. 2007. Lipid raft microdomains and neurotransmitter signalling. *Nature Reviews Neuroscience* **8**:128–140. doi: [10.1038/nrn2059](https://doi.org/10.1038/nrn2059), PMID: [17195035](https://pubmed.ncbi.nlm.nih.gov/17195035/)
- Arnarez C, Mazat JP, Elezgaray J, Marrink SJ, Periole X. 2013. Evidence for cardiolipin binding sites on the membrane-exposed surface of the cytochrome bc1. *Journal of the American Chemical Society* **135**:3112–3120. doi: [10.1021/ja310577u](https://doi.org/10.1021/ja310577u), PMID: [23363024](https://pubmed.ncbi.nlm.nih.gov/23363024/)
- Berendsen HJC, van der Spoel D, van Drunen R. 1995. GROMACS: A message-passing parallel molecular dynamics implementation. *Computer Physics Communications* **91**:43–56. doi: [10.1016/0010-4655\(95\)00042-E](https://doi.org/10.1016/0010-4655(95)00042-E)
- Bussi G, Donadio D, Parrinello M. 2007. Canonical sampling through velocity rescaling. *The Journal of Chemical Physics* **126**:014101. doi: [10.1063/1.2408420](https://doi.org/10.1063/1.2408420), PMID: [17212484](https://pubmed.ncbi.nlm.nih.gov/17212484/)
- Cang X, Du Y, Mao Y, Wang Y, Yang H, Jiang H, Du Y MY. 2013. Mapping the functional binding sites of cholesterol in β 2-adrenergic receptor by long-time molecular dynamics simulations. *The Journal of Physical Chemistry B* **117**:1085–1094. doi: [10.1021/jp3118192](https://doi.org/10.1021/jp3118192), PMID: [23298417](https://pubmed.ncbi.nlm.nih.gov/23298417/)
- Casiraghi M, Damian M, Lescop E, Point E, Moncoq K, Morellet N, Levy D, Marie J, Guittet E, Banères JL, Catoire LJ. 2016. Functional modulation of a G Protein-Coupled receptor conformational landscape in a lipid bilayer. *Journal of the American Chemical Society* **138**:11170–11175. doi: [10.1021/jacs.6b04432](https://doi.org/10.1021/jacs.6b04432), PMID: [27489943](https://pubmed.ncbi.nlm.nih.gov/27489943/)
- Cherezov V, Rosenbaum DM, Hanson MA, Rasmussen SG, Thian FS, Kobilka TS, Choi HJ, Kuhn P, Weis WI, Kobilka BK, Stevens RC. 2007. High-resolution crystal structure of an engineered human beta2-adrenergic G protein-coupled receptor. *Science* **318**:1258–1265. doi: [10.1126/science.1150577](https://doi.org/10.1126/science.1150577), PMID: [17962520](https://pubmed.ncbi.nlm.nih.gov/17962520/)
- Contreras FX, Ernst AM, Haberkant P, Björkholm P, Lindahl E, Gönen B, Tischer C, Elofsson A, von Heijne G, Thiele C, Pepperkok R, Wieland F, Brügger B. 2012. Molecular recognition of a single sphingolipid species by a protein's transmembrane domain. *Nature* **481**:525–529. doi: [10.1038/nature10742](https://doi.org/10.1038/nature10742), PMID: [22230960](https://pubmed.ncbi.nlm.nih.gov/22230960/)
- Coskun Ü, Grzybek M, Drechsel D, Simons K. 2011. Regulation of human EGF receptor by lipids. *PNAS* **108**:9044–9048. doi: [10.1073/pnas.1105666108](https://doi.org/10.1073/pnas.1105666108), PMID: [21571640](https://pubmed.ncbi.nlm.nih.gov/21571640/)
- Curdová J, Capková P, Plásek J, Repáková J, Vattulainen I. 2007. Free pyrene probes in gel and fluid membranes: perspective through atomistic simulations. *The Journal of Physical Chemistry B* **111**:3640–3650. doi: [10.1021/jp065956w](https://doi.org/10.1021/jp065956w), PMID: [17388522](https://pubmed.ncbi.nlm.nih.gov/17388522/)
- Dawaliby R, Trubbia C, Delporte C, Masureel M, Van Antwerpen P, Kobilka BK, Govaerts C. 2016. Allosteric regulation of G protein-coupled receptor activity by phospholipids. *Nature Chemical Biology* **12**:35–39. doi: [10.1038/nchembio.1960](https://doi.org/10.1038/nchembio.1960), PMID: [26571351](https://pubmed.ncbi.nlm.nih.gov/26571351/)

- Dror RO**, Arlow DH, Borhani DW, Jensen MØ, Piana S, Shaw DE. 2009. Identification of two distinct inactive conformations of the beta2-adrenergic receptor reconciles structural and biochemical observations. *PNAS* **106**:4689–4694. doi: [10.1073/pnas.0811065106](https://doi.org/10.1073/pnas.0811065106), PMID: 19258456
- Dror RO**, Arlow DH, Maragakis P, Mildorf TJ, Pan AC, Xu H, Borhani DW, Shaw DE. 2011. Activation mechanism of the β 2-adrenergic receptor. *PNAS* **108**:18684–18689. doi: [10.1073/pnas.1110499108](https://doi.org/10.1073/pnas.1110499108), PMID: 22031696
- Essmann U**, Perera L, Berkowitz ML, Darden T, Lee H, Pedersen LG. 1995. A smooth particle mesh ewald method. *The Journal of Chemical Physics* **103**:8577–8593. doi: [10.1063/1.470117](https://doi.org/10.1063/1.470117)
- Gapsys V**, de Groot BL, Briones R. 2013. Computational analysis of local membrane properties. *Journal of Computer-Aided Molecular Design* **27**:845–858. doi: [10.1007/s10822-013-9684-0](https://doi.org/10.1007/s10822-013-9684-0)
- Gater DL**, Saurel O, Iordanov I, Liu W, Cherezov V, Milon A. 2014. Two classes of cholesterol binding sites for the β 2ar revealed by thermostability and NMR. *Biophysical Journal* **107**:2305–2312. doi: [10.1016/j.bpj.2014.10.011](https://doi.org/10.1016/j.bpj.2014.10.011), PMID: 25418299
- Gilchrist A** (Ed). 2010. *GPCR Molecular Pharmacology and Drug Targeting: Shifting Paradigms and New Directions*. Hoboken, New Jersey: John Wiley & Sons, Inc.
- Gimpl G**, Burger K, Fahrenholz F. 1997. Cholesterol as modulator of receptor function. *Biochemistry* **36**:10959–10974. doi: [10.1021/bi963138w](https://doi.org/10.1021/bi963138w), PMID: 9283088
- Gimpl G**. 2016. Interaction of G protein coupled receptors and cholesterol. *Chemistry and Physics of Lipids* **199**:61–73. doi: [10.1016/j.chemphyslip.2016.04.006](https://doi.org/10.1016/j.chemphyslip.2016.04.006), PMID: 27108066
- Hanson MA**, Cherezov V, Griffith MT, Roth CB, Jaakola VP, Chien EY, Velasquez J, Kuhn P, Stevens RC. 2008. A specific cholesterol binding site is established by the 2.8 Å structure of the human beta2-adrenergic receptor. *Structure* **16**:897–905. doi: [10.1016/j.str.2008.05.001](https://doi.org/10.1016/j.str.2008.05.001), PMID: 18547522
- Hess B**, Bekker H, Berendsen HJC, Fraaije JGEM. 1997. LINCS: A linear constraint solver for molecular simulations. *Journal of Computational Chemistry* **18**:1463–1472. doi: [10.1002/\(SICI\)1096-987X\(199709\)18:12<1463::AID-JCC4>3.0.CO;2-H](https://doi.org/10.1002/(SICI)1096-987X(199709)18:12<1463::AID-JCC4>3.0.CO;2-H)
- Hess B**, Kutzner C, van der Spoel D, Lindahl E. 2008. GROMACS 4: algorithms for highly efficient, Load-Balanced, and scalable molecular simulation. *Journal of Chemical Theory and Computation* **4**:435–447. doi: [10.1021/ct700301q](https://doi.org/10.1021/ct700301q), PMID: 26620784
- Horn JN**, Kao TC, Grossfield A. 2014. Coarse-grained molecular dynamics provides insight into the interactions of lipids and cholesterol with rhodopsin. *Advances in Experimental Medicine and Biology* **796**:75–94. doi: [10.1007/978-94-007-7423-0_5](https://doi.org/10.1007/978-94-007-7423-0_5), PMID: 24158802
- Huerta-Cepas J**, Capella-Gutiérrez S, Pryszcz LP, Marcet-Houben M, Gabaldón T. 2014. PhylomeDB v4: zooming into the plurality of evolutionary histories of a genome. *Nucleic Acids Research* **42**:D897–D902. doi: [10.1093/nar/gkt1177](https://doi.org/10.1093/nar/gkt1177), PMID: 24275491
- Jafurulla M**, Rao BD, Sreedevi S, Ruyschaert J-M, Covey DF, Chattopadhyay A. 2014. Stereospecific requirement of cholesterol in the function of the serotonin1A receptor. *Biochimica et Biophysica Acta (BBA) - Biomembranes* **1838**:158–163. doi: [10.1016/j.bbamem.2013.08.015](https://doi.org/10.1016/j.bbamem.2013.08.015)
- Javanainen M**. 2014. Universal method for embedding proteins into complex lipid bilayers for molecular dynamics simulations. *Journal of Chemical Theory and Computation* **10**:2577–2582. doi: [10.1021/ct500046e](https://doi.org/10.1021/ct500046e)
- Jorgensen WL**, Chandrasekhar J, Madura JD, Impey RW, Klein ML. 1983. Comparison of simple potential functions for simulating liquid water. *The Journal of Chemical Physics* **79**:926–935. doi: [10.1063/1.445869](https://doi.org/10.1063/1.445869)
- Jorgensen WL**, Maxwell DS, Tirado-Rives J. 1996. Development and testing of the OPLS All-Atom force field on conformational energetics and properties of organic liquids. *Journal of the American Chemical Society* **118**:11225–11236. doi: [10.1021/ja9621760](https://doi.org/10.1021/ja9621760)
- Kaminski GA**, Friesner RA, Tirado-Rives J, Jorgensen WL. 2001. Evaluation and reparametrization of the OPLS-AA force field for proteins via comparison with accurate quantum chemical calculations on peptides. *The Journal of Physical Chemistry B* **105**:6474–6487. doi: [10.1021/jp003919d](https://doi.org/10.1021/jp003919d)
- Kobilka B**. 2013. The structural basis of G-protein-coupled receptor signaling (nobel lecture). *Angewandte Chemie International Edition* **52**:6380–6388. doi: [10.1002/anie.201302116](https://doi.org/10.1002/anie.201302116), PMID: 23650120
- Koynova R**, Caffrey M. 1998. Phases and phase transitions of the phosphatidylcholines. *Biochimica et Biophysica Acta (BBA) - Reviews on Biomembranes* **1376**:91–145. doi: [10.1016/S0304-4157\(98\)00006-9](https://doi.org/10.1016/S0304-4157(98)00006-9), PMID: 9666088
- Kulig W**, Jurkiewicz P, Olzyska A, Tynkynen J, Javanainen M, Manna M, Rog T, Hof M, Vattulainen I, Jungwirth P. 2015b. Experimental determination and computational interpretation of biophysical properties of lipid bilayers enriched by cholesterol hemisuccinate. *Biochimica Et Biophysica Acta* **1848**:422–432. doi: [10.1016/j.bbamem.2014.10.032](https://doi.org/10.1016/j.bbamem.2014.10.032)
- Kulig W**, Olżyńska A, Jurkiewicz P, Kantola AM, Komulainen S, Manna M, Pourmousa M, Vazdar M, Cwiklik L, Rog T, Khelashvili G, Harries D, Telkki VV, Hof M, Vattulainen I, Jungwirth P, Olzyska A. 2015a. cholesterol under oxidative stress-How lipid membranes sense oxidation as cholesterol is being replaced by oxysterols. *Free Radical Biology and Medicine* **84**:30–41. doi: [10.1016/j.freeradbiomed.2015.03.006](https://doi.org/10.1016/j.freeradbiomed.2015.03.006), PMID: 25795515
- Kulig W**, Pasenkiewicz-Gierula M, Róg T. 2015c. Topologies, structures and parameter files for lipid simulations in GROMACS with the OPLS-aa force field: DPPC, POPC, DOPC, PEPC, and cholesterol. *Data in Brief* **5**:333–336. doi: [10.1016/j.dib.2015.09.013](https://doi.org/10.1016/j.dib.2015.09.013), PMID: 26568975
- Kulig W**, Pasenkiewicz-Gierula M, Róg T. 2016. Cis and trans unsaturated phosphatidylcholine bilayers: A molecular dynamics simulation study. *Chemistry and Physics of Lipids* **195**:12–20. doi: [10.1016/j.chemphyslip.2015.07.002](https://doi.org/10.1016/j.chemphyslip.2015.07.002), PMID: 26187855
- Kulig W**, Tynkynen J, Javanainen M, Manna M, Rog T, Vattulainen I, Jungwirth P. 2014. How well does cholesterol hemisuccinate mimic cholesterol in saturated phospholipid bilayers? *Journal of Molecular Modeling* **20**:1–9. doi: [10.1007/s00894-014-2121-z](https://doi.org/10.1007/s00894-014-2121-z)

- Latorraca NR**, Venkatakrishnan AJ, Dror RO. 2016. GPCR dynamics: Structures in motion. *Chemical Reviews*. doi: [10.1021/acs.chemrev.6b00177](https://doi.org/10.1021/acs.chemrev.6b00177), PMID: [27622975](https://pubmed.ncbi.nlm.nih.gov/27622975/)
- Lee JY**, Lyman E, Young J. 2012. Predictions for cholesterol interaction sites on the A_{2A} adenosine receptor. *Journal of the American Chemical Society* **134**:16512–16515. doi: [10.1021/ja307532d](https://doi.org/10.1021/ja307532d), PMID: [23005256](https://pubmed.ncbi.nlm.nih.gov/23005256/)
- Lefkowitz RJ**. 2000. The superfamily of heptahelical receptors. *Nature cell biology* **2**:E133–E136. doi: [10.1038/35017152](https://doi.org/10.1038/35017152), PMID: [10878827](https://pubmed.ncbi.nlm.nih.gov/10878827/)
- Lingwood D**, Simons K. 2010. Lipid rafts as a membrane-organizing principle. *Science* **327**:46–50. doi: [10.1126/science.1174621](https://doi.org/10.1126/science.1174621), PMID: [20044567](https://pubmed.ncbi.nlm.nih.gov/20044567/)
- Liu W**, Chun E, Thompson AA, Chubukov P, Xu F, Katritch V, Han GW, Roth CB, Heitman LH, IJzerman AP, Cherezov V, Stevens RC. 2012. Structural basis for allosteric regulation of GPCRs by sodium ions. *Science* **337**:232–236. doi: [10.1126/science.1219218](https://doi.org/10.1126/science.1219218), PMID: [22798613](https://pubmed.ncbi.nlm.nih.gov/22798613/)
- Loll PJ**. 2014. Membrane proteins, detergents and crystals: what is the state of the art? *Acta Crystallographica Section F Structural Biology Communications* **70**:1576–1583. doi: [10.1107/S2053230X14025035](https://doi.org/10.1107/S2053230X14025035)
- Maciejewski A**, Pasenkiewicz-Gierula M, Cramariuc O, Vattulainen I, Rog T. 2014. Refined OPLS all-atom force field for saturated phosphatidylcholine bilayers at full hydration. *The Journal of Physical Chemistry B* **118**:4571–4581. doi: [10.1021/jp5016627](https://doi.org/10.1021/jp5016627), PMID: [24745688](https://pubmed.ncbi.nlm.nih.gov/24745688/)
- Manglik A**, Kobilka B. 2014. The role of protein dynamics in GPCR function: insights from the β 2ar and rhodopsin. *Current Opinion in Cell Biology* **27**:136–143. doi: [10.1016/j.ceb.2014.01.008](https://doi.org/10.1016/j.ceb.2014.01.008), PMID: [24534489](https://pubmed.ncbi.nlm.nih.gov/24534489/)
- Manna M**, Kulig W, Javanainen M, Tynkkynen J, Hensen U, Müller DJ, Rog T, Vattulainen I. 2015. How to minimize artifacts in atomistic simulations of membrane proteins, whose crystal structure is heavily engineered: β ₂-adrenergic receptor in the spotlight. *Journal of Chemical Theory and Computation* **11**:3432–3445. doi: [10.1021/acs.jctc.5b00070](https://doi.org/10.1021/acs.jctc.5b00070), PMID: [26575777](https://pubmed.ncbi.nlm.nih.gov/26575777/)
- Manna M**, Mukhopadhyay C. 2011. Cholesterol driven alteration of the conformation and dynamics of phospholamban in model membranes. *Physical Chemistry Chemical Physics* **13**:20188–20198. doi: [10.1039/c1cp21793c](https://doi.org/10.1039/c1cp21793c), PMID: [21993332](https://pubmed.ncbi.nlm.nih.gov/21993332/)
- Muth S**, Fries A, Gimpl G. 2011. Cholesterol-induced conformational changes in the oxytocin receptor. *Biochemical Journal* **437**:541–553. doi: [10.1042/BJ20101795](https://doi.org/10.1042/BJ20101795), PMID: [21561435](https://pubmed.ncbi.nlm.nih.gov/21561435/)
- Neale C**, Herce HD, Pomès R, García AE. 2015. Can specific Protein-Lipid interactions stabilize an active state of the beta 2 adrenergic receptor? *Biophysical Journal* **109**:1652–1662. doi: [10.1016/j.bpj.2015.08.028](https://doi.org/10.1016/j.bpj.2015.08.028), PMID: [26488656](https://pubmed.ncbi.nlm.nih.gov/26488656/)
- Neuvonen M**, Manna M, Morkkila S, Javanainen M, Rog T, Liu Z, Bittman R, Vattulainen I, Ikonen E. 2014. Enzymatic oxidation of cholesterol: properties and functional effects of cholestenone in cell membranes. *PLoS One* **9**:e103743. doi: [10.1371/journal.pone.0103743](https://doi.org/10.1371/journal.pone.0103743), PMID: [25157633](https://pubmed.ncbi.nlm.nih.gov/25157633/)
- Nygaard R**, Zou Y, Dror RO, Mildorf TJ, Arlow DH, Manglik A, Pan AC, Liu CW, Fung JJ, Bokoch MP, Thian FS, Kobilka TS, Shaw DE, Mueller L, Prosser RS, Kobilka BK. 2013. The dynamic process of β (2)-adrenergic receptor activation. *Cell* **152**:532–542. doi: [10.1016/j.cell.2013.01.008](https://doi.org/10.1016/j.cell.2013.01.008), PMID: [23374348](https://pubmed.ncbi.nlm.nih.gov/23374348/)
- Oates J**, Watts A. 2011. Uncovering the intimate relationship between lipids, cholesterol and GPCR activation. *Current Opinion in Structural Biology* **21**:802–807. doi: [10.1016/j.sbi.2011.09.007](https://doi.org/10.1016/j.sbi.2011.09.007), PMID: [22036833](https://pubmed.ncbi.nlm.nih.gov/22036833/)
- Olkkonen VM**, Hynynen R. 2009. Interactions of oxysterols with membranes and proteins. *Molecular Aspects of Medicine* **30**:123–133. doi: [10.1016/j.mam.2009.02.004](https://doi.org/10.1016/j.mam.2009.02.004), PMID: [19248802](https://pubmed.ncbi.nlm.nih.gov/19248802/)
- Ozcan O**, Uyar A, Doruker P, Akten ED. 2013. Effect of intracellular loop 3 on intrinsic dynamics of human β ₂-adrenergic receptor. *BMC Structural Biology* **13**:29. doi: [10.1186/1472-6807-13-29](https://doi.org/10.1186/1472-6807-13-29), PMID: [24206668](https://pubmed.ncbi.nlm.nih.gov/24206668/)
- Paila YD**, Chattopadhyay A. 2009. The function of G-protein coupled receptors and membrane cholesterol: specific or general interaction? *Glycoconjugate Journal* **26**:711–720. doi: [10.1007/s10719-008-9218-5](https://doi.org/10.1007/s10719-008-9218-5), PMID: [19052861](https://pubmed.ncbi.nlm.nih.gov/19052861/)
- Paila YD**, Jindal E, Goswami SK, Chattopadhyay A. 2011. Cholesterol depletion enhances adrenergic signaling in cardiac myocytes. *Biochimica et Biophysica Acta (BBA) - Biomembranes* **1808**:461–465. doi: [10.1016/j.bbamem.2010.09.006](https://doi.org/10.1016/j.bbamem.2010.09.006), PMID: [20851100](https://pubmed.ncbi.nlm.nih.gov/20851100/)
- Parrinello M**, Rahman A. 1981. Polymorphic transitions in single crystals: A new molecular dynamics method. *Journal of Applied Physics* **52**:7182–7190. doi: [10.1063/1.328693](https://doi.org/10.1063/1.328693)
- Pontier SM**, Percherancier Y, Galandrin S, Breit A, Galés C, Bouvier M. 2008. Cholesterol-dependent separation of the beta2-adrenergic receptor from its partners determines signaling efficacy: insight into nanoscale organization of signal transduction. *Journal of Biological Chemistry* **283**:24659–24672. doi: [10.1074/jbc.M800778200](https://doi.org/10.1074/jbc.M800778200), PMID: [18566454](https://pubmed.ncbi.nlm.nih.gov/18566454/)
- Prasanna X**, Chattopadhyay A, Sengupta D. 2014. cholesterol modulates the dimer interface of the β ₂-adrenergic receptor via cholesterol occupancy sites. *Biophysical Journal* **106**:1290–1300. doi: [10.1016/j.bpj.2014.02.002](https://doi.org/10.1016/j.bpj.2014.02.002), PMID: [24655504](https://pubmed.ncbi.nlm.nih.gov/24655504/)
- Pucadyil TJ**, Chattopadhyay A. 2006. Role of cholesterol in the function and organization of G-protein coupled receptors. *Progress in Lipid Research* **45**:295–333. doi: [10.1016/j.plipres.2006.02.002](https://doi.org/10.1016/j.plipres.2006.02.002), PMID: [16616960](https://pubmed.ncbi.nlm.nih.gov/16616960/)
- Rasmussen SG**, DeVree BT, Zou Y, Kruse AC, Chung KY, Kobilka TS, Thian FS, Chae PS, Pardon E, Calinski D, Mathiesen JM, Shah ST, Lyons JA, Caffrey M, Gellman SH, Steyaert J, Skiniotis G, Weis WI, Sunahara RK, Kobilka BK. 2011. Crystal structure of the β ₂ adrenergic receptor-Gs protein complex. *Nature* **477**:549–555. doi: [10.1038/nature10361](https://doi.org/10.1038/nature10361), PMID: [21772288](https://pubmed.ncbi.nlm.nih.gov/21772288/)
- Rosenbaum DM**, Zhang C, Lyons JA, Holl R, Aragao D, Arlow DH, Rasmussen SG, Choi HJ, Devree BT, Sunahara RK, Chae PS, Gellman SH, Dror RO, Shaw DE, Weis WI, Caffrey M, Gmeiner P, Kobilka BK. 2011. Structure and function of an irreversible agonist- β (2) adrenoceptor complex. *Nature* **469**:236–240. doi: [10.1038/nature09665](https://doi.org/10.1038/nature09665), PMID: [21228876](https://pubmed.ncbi.nlm.nih.gov/21228876/)

- Sievers F**, Wilm A, Dineen D, Gibson TJ, Karplus K, Li W, Lopez R, McWilliam H, Remmert M, Söding J, Thompson JD, Higgins DG. 2011. Fast, scalable generation of high-quality protein multiple sequence alignments using clustal omega. *Molecular Systems Biology* **7**:539. doi: [10.1038/msb.2011.75](https://doi.org/10.1038/msb.2011.75), PMID: [21988835](https://pubmed.ncbi.nlm.nih.gov/21988835/)
- Simons K**, Ikonen E. 2000. How cells handle cholesterol. *Science* **290**:1721–1726. doi: [10.1126/science.290.5497.1721](https://doi.org/10.1126/science.290.5497.1721), PMID: [11099405](https://pubmed.ncbi.nlm.nih.gov/11099405/)
- Warne T**, Moukhametzianov R, Baker JG, Nehmé R, Edwards PC, Leslie AG, Schertler GF, Tate CG. 2011. The structural basis for agonist and partial agonist action on a β_1 -adrenergic receptor. *Nature* **469**:241–244. doi: [10.1038/nature09746](https://doi.org/10.1038/nature09746), PMID: [21228877](https://pubmed.ncbi.nlm.nih.gov/21228877/)
- Xiang Y**, Rybin VO, Steinberg SF, Kobilka B. 2002. Caveolar localization dictates physiologic signaling of beta 2-adrenoceptors in neonatal cardiac myocytes. *Journal of Biological Chemistry* **277**:34280–34286. doi: [10.1074/jbc.M201644200](https://doi.org/10.1074/jbc.M201644200), PMID: [12097322](https://pubmed.ncbi.nlm.nih.gov/12097322/)
- Yao Z**, Kobilka B. 2005. Using synthetic lipids to stabilize purified beta2 adrenoceptor in detergent micelles. *Analytical Biochemistry* **343**:344–346. doi: [10.1016/j.ab.2005.05.002](https://doi.org/10.1016/j.ab.2005.05.002), PMID: [16005425](https://pubmed.ncbi.nlm.nih.gov/16005425/)
- Zocher M**, Zhang C, Rasmussen SG, Kobilka BK, Müller DJ. 2012. Cholesterol increases kinetic, energetic, and mechanical stability of the human β_2 -adrenergic receptor. *PNAS* **109**:E3463–E3472. doi: [10.1073/pnas.1210373109](https://doi.org/10.1073/pnas.1210373109), PMID: [23151510](https://pubmed.ncbi.nlm.nih.gov/23151510/)