

On the wave length of smooth periodic traveling waves of the Camassa-Holm equation

A. Geyer^{a,*}, J. Villadelprat^b

^a*Departament de Matemàtiques, Universitat Autònoma de Barcelona, Barcelona, Spain*

^b*Departament d'Enginyeria Informàtica i Matemàtiques, Universitat Rovira i Virgili, Tarragona, Spain*

Abstract

This paper is concerned with the wave length λ of smooth periodic traveling wave solutions of the Camassa-Holm equation. The set of these solutions can be parametrized using the wave height a (or “peak-to-peak amplitude”). Our main result establishes monotonicity properties of the map $a \mapsto \lambda(a)$, i.e., the wave length as a function of the wave height. We obtain the explicit bifurcation values, in terms of the parameters associated to the equation, which distinguish between the two possible qualitative behaviours of $\lambda(a)$, namely monotonicity and unimodality. The key point is to relate $\lambda(a)$ to the period function of a planar differential system with a quadratic-like first integral, and to apply a criterion which bounds the number of critical periods for this type of systems.

Keywords: Camassa-Holm equation, traveling wave solution, wave length, wave height, center, critical period.

2000 MSC: 35Q35, 34C25

1. Introduction and main result

The Camassa-Holm (CH) equation

$$u_t + 2\kappa u_x - u_{txx} + 3uu_x = 2u_x u_{xx} + u u_{xxx}, \quad x \in \mathbb{R}, t > 0, \quad (1)$$

arises as a shallow water approximation of the Euler equations for inviscid, incompressible and homogenous fluids propagating over a flat bottom, where $u(x, t)$ describes the horizontal velocity component and $\kappa \in \mathbb{R}$ is a parameter related to the critical shallow water speed. This equation was first derived by Fokas and Fuchssteiner [18] as an abstract bi-Hamiltonian equation with infinitely many conservation laws, and later re-derived by Camassa and Holm [4] from physical principles. For a discussion on the relevance and applicability of the CH equation in the context of water waves we refer the reader to Johnson [26, 27, 28] and more recently Constantin and Lannes [12]. We point out that for a large class of initial conditions the CH equation is an integrable infinite-dimensional Hamiltonian system [1, 7, 11, 13, 14, 27], and it is known that the solitary waves of CH are solitons which are orbitally stable [14, 17]. Some classical solutions of the CH equation develop singularities in finite time in the form of wave breaking: the solution remains bounded but its slope

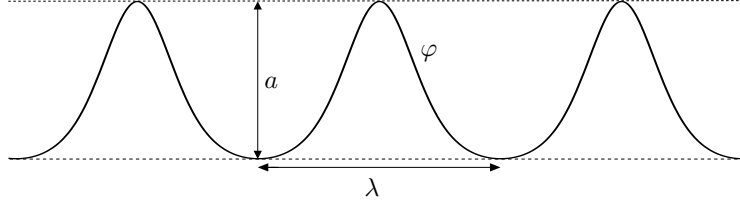


Figure 1: Smooth periodic TWS φ of CH with wave length λ and wave height a .

becomes unbounded [5, 8, 9, 10, 16, 30, 32]. After blow-up the solutions can be recovered in the sense of global weak solutions, see [2, 3] and also [24, 23].

In the present paper, we consider traveling wave solutions of the form

$$u(x, t) = \varphi(x - ct), \quad (2)$$

for $c \in \mathbb{R}$ and some function $\varphi : \mathbb{R} \rightarrow \mathbb{R}$. We denote $s = x - ct$ the independent variable in the moving frame. Inserting the Ansatz (2) into equation (1) and integrating once we obtain the corresponding equation for traveling waves,

$$\varphi''(\varphi - c) + \frac{(\varphi')^2}{2} + r + (c - 2\kappa)\varphi - \frac{3}{2}\varphi^2 = 0, \quad (3)$$

where $r \in \mathbb{R}$ is a constant of integration and the prime denotes derivation with respect to s . A solution φ of (3) is called a *traveling wave solution* (TWS) of the Camassa-Holm equation (1). Lenells [29] provides a complete classification of all (weak) traveling wave solutions of the Camassa-Holm equation. In the present paper, we focus on *smooth periodic* TWS of the Camassa-Holm equation, which can be shown to have a unique maximum and minimum per period, see [29]. In the context of fluid dynamics the period of such a solution is called *wave length*, which we will denote by λ . The difference between the maximum (wave crest) and the minimum (wave trough) is called *wave height*, see Figure 1, which we will denote by a (in some contexts this quantity is also called “peak-to-peak amplitude”).

The aim of this paper is to study the dependence of the wave length λ of smooth periodic TWS of the Camassa-Holm equation (1) on their wave height a . Our main result shows that $\lambda(a)$ is a well-defined function and that it is either monotonous or unimodal. More precisely:

Theorem A. *Given c, κ with $c \neq -\kappa$, there exist real numbers $r_1 < r_{b_1} < r_{b_2} < r_2$ such that the differential equation (1) has smooth periodic TWS of the form (2) if, and only if, the integration constant r in (3) belongs to the interval (r_1, r_2) . For such $r \in (r_1, r_2)$, the set of smooth periodic TWS form a continuous family $\{\varphi_a\}_{a \in (0, a_M)}$ parametrized by the wave height a . Furthermore, the wave length $\lambda = \lambda(a)$ of φ_a satisfies the following:*

- (a) *If $r \in (r_1, r_{b_1}]$, then $\lambda(a)$ is monotonous increasing.*
- (b) *If $r \in (r_{b_1}, r_{b_2})$, then $\lambda(a)$ has a unique critical point which is a maximum.*
- (c) *If $r \in [r_{b_2}, r_2)$, then $\lambda(a)$ is monotonous decreasing.*

Finally, these are the only possible scenarios for smooth periodic TWS of the CH equation.

We point out, see Proposition 2.1, that if $c = -\kappa$ then there are no smooth periodic TWS of the form (2). The exact values of the bifurcation parameters r_1, r_{b_1}, r_{b_2} and r_2 in terms of c and κ can be found in the proof of Theorem A at the end of Section 2. In this regard, we remark that the expressions r_1, r_{b_1} and r_2 also appear in [29, p. 402], but they serve as bifurcation values for a different type of property: they define the boundaries of parameter regions where the various types of weak TWS (smooth, peaked or cusped waves, ...) can occur. It should also be observed that a description on how the wave length of TWS of CH depends on parameters may be found in the last section of [29], where level sets of TWS with the same wave length are described. Furthermore, it is shown that there exist peakons and cuspons with arbitrarily small wave length. In contrast, we will show that for smooth periodic TWS the wave length cannot be arbitrarily small, see Remark 3.10.

The paper is organized as follows. In Section 2 we establish a correspondence between smooth periodic TWS of (1) and periodic orbits around the center of a planar differential system with a quadratic-like first integral, see Proposition 2.1. We observe that the wave length of a smooth periodic solution of (3) is equal to the period of the corresponding periodic orbit. Moreover, there exists an analytic diffeomorphism which relates the wave height of a solution of (3) to the energy level of the first integral at the corresponding periodic orbit of the planar system, see Lemma 2.3. In Theorem 2.5, we state the monotonicity properties of the period function of the center of this planar system, which imply Theorem A. The proof of Theorem 2.5 is carried out in Section 3. It relies on a result proved in [20], which provides a criterion to bound the number of critical periods for this kind of systems.

2. Smooth periodic TWS of the Camassa-Holm equation

TWS of the form (2) of the Camassa-Holm equation (1) correspond to solutions of the equation (3). The next result establishes a correspondence between the smooth periodic solutions of (3) and periodic orbits around the center of an associated planar system. Moreover, it provides a necessary and sufficient condition for the existence of such a center. To this end, recall that the largest punctured neighbourhood of a center which consists entirely of periodic orbits is called *period annulus*, see [6].

Proposition 2.1. *The following holds:*

- (a) φ is a smooth periodic solution of equation (3) if, and only if, $(w, v) = (\varphi - c, \varphi')$ is a periodic orbit of the planar differential system

$$\begin{cases} w' = v, \\ v' = -\frac{F'(w) + \frac{1}{2}v^2}{w}, \end{cases} \quad (4)$$

where

$$F(w) := \alpha w + \beta w^2 - \frac{1}{2}w^3, \text{ with } \alpha := r - 2\kappa c - \frac{1}{2}c^2 \text{ and } \beta := -(c + \kappa). \quad (5)$$

- (b) The function $\hat{H}(w, v) := \frac{1}{2}wv^2 + F(w)$ is a first integral of the differential system (4).
(c) Every periodic orbit of system (4) belongs to the period annulus \mathcal{P} of a center, which exists if, and only if, $-2\beta^2 < 3\alpha < 0$ is verified.

Proof. The assertion in (b) is straightforward. In order to prove (a) we first note that (3) can be written as $\varphi''(\varphi - c) + \frac{1}{2}(\varphi')^2 + F'(\varphi - c) = 0$, where F is defined in (5). Accordingly, φ is a solution of (3) with $\varphi(s) \neq c$ for all s if, and only if, $s \mapsto (w, v) = (\varphi - c, \varphi')(s)$ is a solution of the differential system (4). We claim that $\varphi(s) \neq c$ for all $s \in \mathbb{R}$ in case that φ is smooth and periodic, i.e. $\varphi(s + T) = \varphi(s)$ for some $T > 0$. Clearly, (a) will follow once we show the claim. With this aim in view note that if φ is a smooth

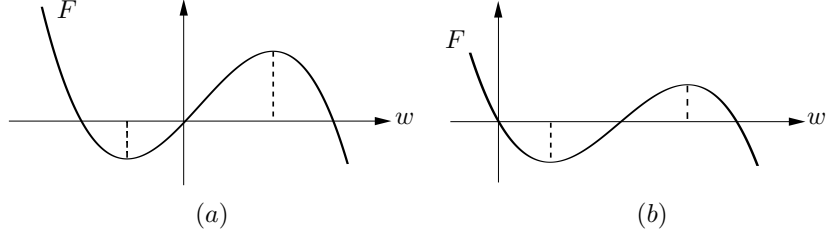


Figure 2: Sketch of the graph of F : (a) when $\alpha > 0$, (b) when $\alpha < 0$ and $\beta > 0$.

periodic solution of (3) then the set $\mathcal{L} := \{(w, v) = (\varphi - c, \varphi')(s); s \in \mathbb{R}\}$ describes a smooth loop. We will show that \mathcal{L} cannot intersect $\{w = 0\}$. We can rule out that $\varphi \equiv c$ because a constant function is not periodic. Hence suppose that there exist s_0 and s_1 such that $\varphi(s) \neq c$ for all $s \in (s_0, s_1)$ and $\varphi(s_1) = c$. Then, for $s \in (s_0, s_1)$, $(w, v) = (\varphi - c, \varphi')(s)$ is a solution of the differential system (4) that tends to the point $p_1 := (0, \varphi'(s_1))$ as $s \rightarrow s_1$. Since $\hat{H}(p_1) = 0$ and by the continuity of \hat{H} , it turns out that \mathcal{L} is inside the zero level set of \hat{H} . An easy computation shows that $\hat{H}(w, v) = 0$ if, and only if, $w = 0$ or $(w - \beta)^2 - v^2 = \beta^2 + 2\alpha$. The second equality describes a hyperbola which intersects $\{w = 0\}$ if, and only if, $\alpha \leq 0$. In any case it is not possible that $\{\hat{H} = 0\}$ contains a smooth loop. So the claim is true and (a) follows.

In order to show (c) recall that the differential system (4) has a first integral, and consequently there are no limit cycles and the periodic orbits form period annuli. A periodic orbit must surround at least one critical point of the differential system, which are of the form $(w, v) = (\hat{w}, 0)$ with $\hat{w} \neq 0$ and $F'(\hat{w}) = 0$. The determinant of the Jacobian of the vector field at such a point is $\det J_{(\hat{w}, 0)} = \frac{F''(\hat{w})}{\hat{w}}$. A straightforward computation shows that $F'(w) = 0$ if, and only if, $w = \frac{2\beta \pm \sqrt{4\beta^2 + 6\alpha}}{3}$. If $\alpha > 0$, then F has a minimum on $w < 0$ and a maximum on $w > 0$ (see Figure 2), which both correspond to saddle points of system (4). Thus, by applying the Poincaré-Bendixon Theorem (see for instance [33]), no periodic orbit is possible in case that $\alpha > 0$. Similarly, if $\alpha = 0$ and $\beta \neq 0$, then there is only one critical point, which is a saddle, whereas if $\alpha = 0$ and $\beta = 0$, then there are no critical points. Hence there are no periodic orbits in case that $\alpha = 0$. Finally let us discuss the case $\alpha < 0$. If $\alpha < 0$ and $2\beta^2 + 3\alpha < 0$, then there are no critical points, which prevents the differential system from having periodic orbits. If $\alpha < 0$ and $2\beta^2 + 3\alpha = 0$, then there exists a unique critical point which is a cusp, and can not be surrounded by a periodic orbit. If $\alpha < 0$ and $2\beta^2 + 3\alpha > 0$ then, see Figure 2, F has its two local extrema, which are located on $w < 0$ in case that $\beta < 0$, and on $w > 0$ in case that $\beta > 0$. In both cases one extremum yields a saddle and the other a center of system (4). By applying the Poincaré-Bendixon Theorem one can easily conclude that the set of periodic orbits forms a punctured neighbourhood of the center, and that no other period annulus is possible. This proves (c). ■

It is now necessary to introduce some notation.

Definition 2.2. Let φ be a smooth periodic solution of the differential equation (3). We denote by a_φ its wave height. By Proposition 2.1, $(w, v) = (\varphi - c, \varphi')$ is a periodic orbit inside the period annulus \mathcal{P} of the differential system (4), which we denote by γ_φ . Since \hat{H} is a first integral of system (4), the orbit γ_φ is inside some level curve of \hat{H} , and we denote its energy level by h_φ . In addition, let the center of (4) be inside the level curve $\{\hat{H} = h_0\}$ and suppose that $\hat{H}(\mathcal{P}) = (h_0, h_1)$. Then $h_\varphi \in (h_0, h_1)$. □

The following result establishes a relation between the wave height of a smooth periodic solution of (3) and the energy level of the corresponding periodic orbit of (4).

Lemma 2.3. *Suppose that the set $\{\varphi\}$ of smooth periodic solutions of (3) is nonempty. With the notation introduced in Definition 2.2, the following holds:*

- (a) *The period of the periodic orbit γ_φ is equal to the wave length of φ .*
- (b) *There exists an analytic diffeomorphism $\ell: (h_0, h_1) \rightarrow (0, a_M)$ verifying that $\ell(h_\varphi) = a_\varphi$ for all φ . In addition, ℓ can be analytically extended to $h = h_0$ by setting $\ell(h_0) = 0$.*

Proof. The assertion in (a) is clear. The key point to prove (b) is that the length of the projection of the periodic orbit γ_φ on the w -axis is a_φ . In order to compute it let us fix that the center of the differential system (4) is at the point $(w_c, 0)$. Let (w_ℓ, w_r) be the projection of its period annulus \mathcal{P} on the w -axis. Thus $w_\ell < w_c < w_r$ and $F'(w) \neq 0$ for all $w \in (w_\ell, w_r) \setminus \{w_c\}$, whereas $F'(w_c) = 0$ and $F''(w_c) \neq 0$. Then there exists an analytic diffeomorphism G on (w_ℓ, w_r) such that $F(w) = h_0 + G(w)^2$, where $h_0 = F(w_c)$. Recall that, by definition, the periodic orbit γ_φ is inside the energy level $\{\hat{H} = h_\varphi\}$. Since $\hat{H}(w, 0) = h$ if and only if $h_0 + G(w)^2 = h$, we have that γ_φ intersects the w -axis at the points $p_\pm(\varphi) = (G^{-1}(\pm\sqrt{h_\varphi - h_0}), 0)$. Hence the length of its projection on the w -axis is $a_\varphi = \ell(h_\varphi) := G^{-1}(\sqrt{h_\varphi - h_0}) - G^{-1}(-\sqrt{h_\varphi - h_0})$. A straightforward argument shows that ℓ is an analytic diffeomorphism on (h_0, h_1) and that it can be analytically extended to $h = h_0$ setting $\ell(h_0) = 0$. This shows (b) and completes the proof. \blacksquare

Remark 2.4. It is clear that the energy levels of \hat{H} parameterize the set of periodic orbits inside \mathcal{P} . Thus, the set of periodic orbits of (4) forms a continuous family $\{\gamma_h\}_{h \in (h_0, h_1)}$. Consequently, and thanks to Proposition 2.1 and Lemma 2.3, we can assert that the set of smooth periodic solutions of (3) forms a continuous family $\{\varphi_a\}_{a \in (0, a_M)}$ parameterized by their wave height. We can thus consider the function $\lambda: (0, a_M) \rightarrow \mathbb{R}^+$ which assigns to each $a \in (0, a_M)$ the wave length of the unique smooth periodic solution of (3) with wave height a . Theorem A is concerned precisely with the qualitative properties of this function. We stress that *a priori* it is defined on the set of smooth periodic solutions of (3) rather than on the interval $(0, a_M)$. On account of Lemma 2.3, the wave length $\lambda(a)$ is equal to the period of the periodic orbit of (4) inside the level curve $\{\hat{H} = \ell^{-1}(a)\}$. This is the key point in proving Theorem A, as it allows us to deduce qualitative properties of the function λ from those of the period function of the center of (4). \square

The following technical result, which will be proved in Section 3, provides a detailed account on the monotonicity properties of the period function of the center at the origin of the differential system (4).

Theorem 2.5. *Consider system (4) with $-2\beta^2 < 3\alpha < 0$ and define $\vartheta := \frac{1}{6} \left(\frac{2|\beta|}{\sqrt{4\beta^2 + 6\alpha}} - 1 \right)$. Then $\vartheta > 0$ and the period function of the center of system (4) verifies the following:*

- (a) *It is monotonous decreasing in case that $\vartheta \in (0, -\frac{1}{10} + \frac{1}{15}\sqrt{6}]$.*
- (b) *It has a unique critical period, which is a maximum, in case that $\vartheta \in (-\frac{1}{10} + \frac{1}{15}\sqrt{6}, \frac{1}{6})$.*
- (c) *It is monotonous increasing in case that $\vartheta \geq \frac{1}{6}$.*

We are now in position to prove the main result of the paper.

Proof of Theorem A. Consider the differential equation (3) and define $\alpha = r - 2\kappa c - \frac{1}{2}c^2$ and $\beta = -(c + \kappa)$. It follows from Proposition 2.1 that the Camassa-Holm equation (1) has smooth periodic TWS if, and only

if, $-2\beta^2 < 3\alpha < 0$. It is easy to see that in terms of the “intrinsic” parameters κ and c , these conditions are equivalent to requiring that the integration constant r belongs to the interval (r_1, r_2) , where $r_1 := -\frac{2}{3}(\kappa - \frac{1}{2}c)^2$ and $r_2 := 2\kappa c + \frac{1}{2}c^2$. Remark 2.4 elucidates the fact that for such r , the set of smooth periodic TWS forms a continuous family $\{\varphi_a\}_{a \in (0, a_M)}$ parameterized by the wave height as a consequence of Lemma 2.3. Moreover, the wave length $\lambda(a)$ of the smooth periodic TWS φ_a is equal to the period of the periodic orbit of (4) inside the energy level $\{\hat{H} = \ell^{-1}(a)\}$. Hence, by applying Theorem 2.5, the result will follow once we write the conditions $\vartheta \in (0, -\frac{1}{10} + \frac{1}{15}\sqrt{6}]$, $\vartheta \in (-\frac{1}{10} + \frac{1}{15}\sqrt{6}, \frac{1}{6})$ and $\vartheta \geq \frac{1}{6}$ in terms of κ , c and r . Taking the relation $\vartheta = \frac{1}{6} \left(\frac{2|\beta|}{\sqrt{4\beta^2 + 6\alpha}} - 1 \right)$ into account and setting

$$r_{b_1} := \kappa c - \frac{1}{2}\kappa^2 \text{ and } r_{b_2} := \frac{\sqrt{6}-3}{6}((\sqrt{6}+1)\kappa^2 - 2(\sqrt{6}-5)\kappa c - 2c^2),$$

some computations show that these conditions are given, respectively, by $r \in [r_{b_2}, r_2)$, $r \in (r_{b_1}, r_{b_2})$ and $r \in (r_1, r_{b_1})$. This proves the result. \blacksquare

3. Study of the period function

This Section is devoted to the proof of Theorem 2.5, which strongly relies on the tools developed in [20]. In order to explain how they can be applied to our problem, some definitions need to be introduced. In the aforementioned paper the authors consider analytic planar differential systems

$$\begin{cases} \dot{x} = p(x, y), \\ \dot{y} = q(x, y), \end{cases} \quad (6)$$

satisfying the following *hypothesis*:

- (H) The differential system (6) has a center at the origin and an analytic first integral of the form $H(x, y) = A(x) + B(x)y + C(x)y^2$ with $A(0) = 0$. Moreover its integrating factor, say K , depends only on x .

Let (x_ℓ, x_r) be the projection onto the x -axis of the period annulus \mathcal{P} around the center at the origin of the differential system (6). Note that $x_\ell < 0 < x_r$. Then, by Lemma 3.1 in [20], the hypothesis (H) implies that $M := \frac{4AC - B^2}{4|C|}$ is a well defined analytic function on (x_ℓ, x_r) with $M(0) = 0$ and $xM'(x) > 0$ for all $x \in (x_\ell, x_r) \setminus \{0\}$. Accordingly, there exists a unique analytic function σ on (x_ℓ, x_r) with $\sigma(x) = -x + o(x)$ such that $M \circ \sigma = M$. Note that σ is an *involution* with $\sigma(0) = 0$. (Recall that a mapping σ is said to be an involution if $\sigma \circ \sigma = \text{Id}$.) Given an analytic function f on $(x_\ell, x_r) \setminus \{0\}$ we define its σ -balance to be

$$\mathcal{B}_\sigma(f)(x) := \frac{f(x) - f(\sigma(x))}{2}.$$

Taking these definitions into account, the statement (b) of Theorem A in [20] asserts the following:

Proposition 3.1. *Suppose that the analytic differential system (6) satisfies the hypothesis (H). Setting $\mu_0 = -1$, define recursively*

$$\mu_i := \left(\frac{1}{2} + \frac{1}{2i-3} \right) \mu_{i-1} + \frac{\sqrt{|C|M}}{(2i-3)K} \left(\frac{K\mu_{i-1}}{\sqrt{|C|M'}} \right)' \text{ and } \ell_i := \frac{K\mu_i}{\sqrt{|C|M'}} \text{ for } i \geq 1.$$

If the number of zeros of $\mathcal{B}_\sigma(\ell_i)$ on $(0, x_r)$, counted with multiplicities, is $n \geq 0$ and it holds that $i > n$, then the number of critical periods of the center at the origin, counted with multiplicities, is at most n .

In particular, we point out that the period function is monotonous if $n = 0$. A key ingredient for determining the number of zeros of $\mathcal{B}_\sigma(l_i)$ is the following result, see [20, Theorem B]. In its statement, and in what follows, *Res* stands for the *multipolynomial resultant* (see for instance [15, 19]).

Proposition 3.2. *Let σ be an analytic involution on (x_ℓ, x_r) with $\sigma(0) = 0$ and let ℓ be an analytic function on $(x_\ell, x_r) \setminus \{0\}$. Assume that ℓ and σ are algebraic, i.e., that there exist $L, S \in \mathbb{C}[x, y]$ such that $L(x, \ell(x)) \equiv 0$ and $S(x, \sigma(x)) \equiv 0$. Let us define $T(x, y) := \text{Res}_z(L(x, z), L(y, z))$ and $\mathcal{R}(x) := \text{Res}_y(S(x, y), T(x, y))$. Finally let $s(x)$ and $t(x)$ be, respectively, the leading coefficients of $S(x, y)$ and $T(x, y)$ with respect to y . Then the following hold:*

- (a) *If $\mathcal{B}_\sigma(\ell)(x_0) = 0$ for some $x_0 \in (x_\ell, x_r) \setminus \{0\}$, then $\mathcal{R}(x_0) = 0$.*
- (b) *If $s(x)$ and $t(x)$ do not vanish simultaneously at x_0 , then the multiplicity of $\mathcal{B}_\sigma(\ell)$ at x_0 is not greater than the multiplicity of \mathcal{R} at x_0 .*

In order to apply these results we move the center of differential system (4) to the origin. In passing we notice that the problem is essentially one-parametric. Since its proof is a straightforward computation, we do not include it here for the sake of brevity.

Lemma 3.3. *Consider system (4) with α and β verifying $-2\beta^2 < 3\alpha < 0$ and let us say that the center is at a point $(w_c, 0)$. Then the coordinate transformation given by $\left\{ x = \frac{w-w_c}{2\beta\sqrt{\Delta}}, y = \frac{v}{2\beta\sqrt{\Delta}} \right\}$, where $\Delta := 4 + \frac{6\alpha}{\beta^2}$, brings system (4) to*

$$\begin{cases} x' = y, \\ y' = -\frac{x - 3x^2 + y^2}{2(x + \vartheta)}, \end{cases} \quad (7)$$

where $\vartheta := \frac{1}{6} \left(\frac{2}{\sqrt{\Delta}} - 1 \right)$ is positive.

The planar differential system (7) is analytic away from the singular line $x = -\vartheta$. One can easily verify that it satisfies the hypothesis **(H)** with $A(x) = \frac{1}{2}x^2 - x^3$, $B(x) = 0$, $C(x) = x + \vartheta$ and $K(x) = 2(x + \vartheta)$. The function A has a minimum at $x = 0$ and a maximum at $x = \frac{1}{3}$, which yield a center at $(0, 0)$ and a saddle at $(\frac{1}{3}, 0)$, respectively. When $\vartheta > \frac{1}{6}$, in which case $A(-\vartheta) > A(\frac{1}{3})$, the singular line is “far away” from \mathcal{P} , and the period annulus is bounded by the homoclinic connection based in the saddle point. When $\vartheta < \frac{1}{6}$ the situation is quite different because the outer boundary of \mathcal{P} consists of a trajectory with α and ω limit in the straight line $\{x = -\vartheta\}$ and the segment between these two limit points, see Figure 3. For this reason, we will study the period function of the center of system (7) separately for $\vartheta < 1/6$ and $\vartheta > 1/6$.

Observe that if $B = 0$, then the hypothesis **(H)** implies that the involution σ is defined by $A = A \circ \sigma$. This is the case in the differential system under consideration, and one can easily verify that

$$A(x) - A(z) = 2(z - x)S(x, z), \quad \text{where } S(x, z) := 2x^2 + 2xz + 2z^2 - x - z. \quad (8)$$

Thus, we get $\sigma(x) = \frac{1}{4}(1 - 2x - \sqrt{(6x + 1)(1 - 2x)})$. As a matter of fact, thanks to Proposition 3.2, the explicit expression of the involution is not required and we shall only use that $S(x, \sigma(x)) = 0$.

The following auxiliary result will be needed at various points throughout this Section. The proof is a straightforward computation of the first three coefficients in the Taylor expansion of the period function using standard techniques (see for example [21]).

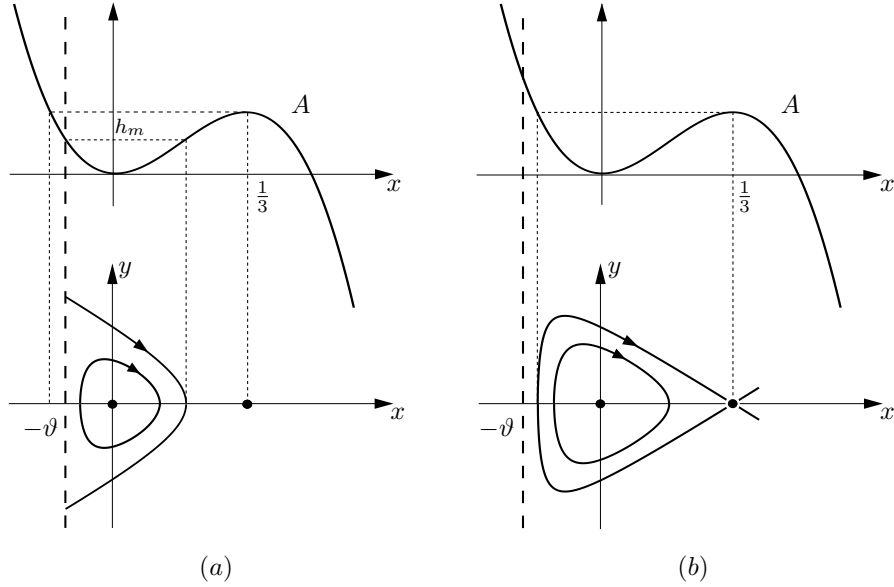


Figure 3: The period annulus \mathcal{P} of the center at the origin of system (7) for the two different cases that may occur: (a) when $\vartheta < 1/6$; (b) when $\vartheta > 1/6$.

Lemma 3.4. *The first, second and third period constants of the center at the origin of system (7) are given, up to a positive factor, by*

$$\Delta_1 = 60\vartheta^2 + 12\vartheta - 1, \quad \Delta_2 = -\Delta_1 \quad \text{and} \quad \Delta_3 = 18240\vartheta^4 + 3312\vartheta^3 - 276\vartheta^2 + 40\vartheta - 5,$$

respectively.

Proposition 3.5. *If $\vartheta \geq \frac{1}{6}$, then the period function of the center of system (7) is monotonous increasing.*

Proof. If $\vartheta \geq \frac{1}{6}$ then, see Figure 3, the projection of the period annulus on the x -axis is $(-\frac{1}{6}, \frac{1}{3})$. Following Proposition 3.1, we shall study the number of zeros of $\mathcal{B}_\sigma(\ell_1)$ and to this end we will apply Proposition 3.2. With this aim in view note that

$$\ell_1(x) = \frac{1}{2} \frac{(6\vartheta + 1)x - 4\vartheta - 1}{\sqrt{x + \vartheta}(3x - 1)^3}.$$

Accordingly, $L(x, \ell_1(x)) \equiv 0$ with $L(x, y) := 4(x + \vartheta)(3x - 1)^6 y^2 - ((6\vartheta + 1)x - 4\vartheta - 1)^2$. Recall also that $S(x, \sigma(x)) \equiv 0$, where $S \in \mathbb{R}[x, y]$ is defined in (8). A computation shows that $\text{Res}_z(L(x, z), L(y, z)) = 16(x - y)^2 \hat{T}(x, y)^2$, with \hat{T} a bivariate polynomial of degree 8 in x and y which also depends polynomially on ϑ . Finally $\mathcal{R}(x) := \text{Res}_y(S(x, y), T(x, y)) = (3x - 1)^8 R(x)$, where R is a univariate polynomial of degree 8 in x depending polynomially on ϑ .

Let us define $\mathcal{Z}(\vartheta)$ to be the number of roots of R on $(0, \frac{1}{3})$ counted with multiplicities. We claim that $\mathcal{Z}(\vartheta) = 0$ for all $\vartheta \geq \frac{1}{6}$. For $\vartheta = \frac{1}{6}$ this can be easily verified by applying Sturm's Theorem. To prove it for

$\vartheta > \frac{1}{6}$ we first note that

$$R(0) = (4\vartheta + 1)(2\vartheta + 1)(48\vartheta^2 + 24\vartheta - 1)(60\vartheta^2 + 12\vartheta - 1) \quad (9)$$

and

$$R(1/3) = (6\vartheta - 1)(2160\vartheta^3 + 2484\vartheta^2 + 720\vartheta + 17)(2/3 + 2\vartheta)^2,$$

which do not vanish for $\vartheta > \frac{1}{6}$. The discriminant of R with respect to x , $\text{Disc}_x(R)$, is a polynomial $\mathcal{D}(\vartheta)$ of degree 82. After factorizing it, one can easily prove that \mathcal{D} vanishes on $(\frac{1}{6}, +\infty)$ exactly once, at $\vartheta = \bar{\vartheta}$ with $\bar{\vartheta} \approx 0.954$. Altogether this implies that $\mathcal{Z}(\vartheta)$ is constant on $(\frac{1}{6}, \bar{\vartheta})$ and $(\bar{\vartheta}, +\infty)$. Choosing one value of ϑ in each interval and applying Sturm's Theorem we find that $\mathcal{Z}(\vartheta) = 0$ for $\vartheta \in (\frac{1}{6}, +\infty) \setminus \{\bar{\vartheta}\}$. To prove that this is true for $\vartheta = \bar{\vartheta}$ as well we show that $x \mapsto \ell_1(x)$ is monotonous on $(-\frac{1}{6}, \frac{1}{3})$ for all $\vartheta \in (\frac{9}{10}, 1)$. Indeed, one can verify that

$$\ell_1'(x) = \frac{N(x)}{4(x + \vartheta)^{3/2}(3x - 1)^4},$$

with

$$N(x) = (90\vartheta + 15)x^2 + (72\vartheta^2 - 66\vartheta - 20)x - 60\vartheta^2 - 12\vartheta + 1.$$

We have that $N(x) \neq 0$ for $x \in (-\frac{1}{6}, \frac{1}{3})$ and $\vartheta \in (\frac{9}{10}, 1)$ because it is true for $\vartheta = \frac{95}{100}$ and, on the other hand, the number of roots counted with multiplicity does not change due to the fact that

$$N(-1/6)N(1/3)\text{Disc}_x(N) \neq 0 \text{ for all } \vartheta \in (9/10, 1).$$

Therefore $\ell_1'(x) \neq 0$ for all $x \in (-\frac{1}{6}, \frac{1}{3})$ and $\vartheta \in (\frac{9}{10}, 1)$, and we can assert that \mathcal{R} does not vanish on $(0, \frac{1}{3})$ for any $\vartheta \geq \frac{1}{6}$. In view of (a) in Proposition 3.2 this implies that $\mathcal{B}_\sigma(\ell_1) \neq 0$ on $(0, \frac{1}{3})$. This proves the validity of the claim and hence, by applying Proposition 3.1 with $n = 0$, it follows that the period function is monotonous for $\vartheta \geq \frac{1}{6}$. Finally, the result follows by noting that, thanks to Lemma 3.4, the first period constant Δ_1 is positive for $\vartheta \geq \frac{1}{6}$. \blacksquare

In order to study the period function of the center of system (7) for $\vartheta < \frac{1}{6}$, we first recall the well-known *Gelfand-Leray derivative*, see for instance [25].

Lemma 3.6. *Let ω and η be two rational 1-forms such that $d\omega = dH \wedge \eta$ and let $\gamma_h \in H^1(L_h, \mathbb{Z})$ be a continuous family of cycles on non-critical level curves $L_h = \{H = h\}$ not passing through poles of neither ω nor η . Then*

$$\frac{d}{dh} \oint \omega = \oint \eta. \quad (10)$$

We shall also use the following result, see [22, Lemma 4.1].

Lemma 3.7. *Let γ_h be an oval inside the level curve $\{A(x) + C(x)y^2 = h\}$ and consider a function F such that F/A' is analytic at $x = 0$. Then, for any $k \in \mathbb{N}$,*

$$\int_{\gamma_h} F(x)y^{k-2}dx = \int_{\gamma_h} G(x)y^k dx,$$

where $G = \frac{2}{k} \left(\frac{CF}{A'} \right)' - \left(\frac{C'F}{A'} \right)$.

This allows us to prove the following result about the derivative of the period function associated to the center of the analytic differential system (6) satisfying hypothesis (H).

Lemma 3.8. *Suppose that the analytic differential system (6) satisfies the hypothesis (H) with $B = 0$. Let $T(h)$ be the period of the periodic orbit γ_h inside the energy level $\{H = h\}$. Then*

$$T'(h) = \frac{1}{h} \int_{\gamma_h} R(x) \frac{dx}{y},$$

where $R = \frac{1}{2C} \left(\frac{KA}{A'} \right)' - \frac{K(AC)'}{4A'C^2}$.

Proof. Note first that if (6) satisfies (H) with $B = 0$, then $\frac{dx}{dt} = \frac{H_y(x,y)}{K(x)} = \frac{2C(x)y}{K(x)}$, so that

$$T(h) = \int_{\gamma_h} \left(\frac{K}{2C} \right) (x) \frac{dx}{y}. \quad (11)$$

Accordingly, since $A(x) + C(x)y^2 = h$ on γ_h we get

$$2hT(h) = \int_{\gamma_h} \left(\frac{KA}{C} \right) (x) \frac{dx}{y} + \int_{\gamma_h} K(x)y dx = \int_{\gamma_h} (G + K)(x) y dx,$$

with $G := 2 \left(\frac{KA}{A'} \right)' - \frac{KAC'}{A'C}$, where the second equality follows by applying Lemma 3.7 with $F = \frac{KA}{C}$. Next we apply Lemma 3.6 taking $H(x, y) = A(x) + C(x)y^2$, $\omega = (G + K)(x) y dx$ and $\eta = \left(\frac{G+K}{2C} \right) (x) \frac{dx}{y}$ in order to get that

$$2(hT(h))' = 2hT'(h) + 2T(h) = \int_{\gamma_h} \left(\frac{G + K}{2C} \right) (x) \frac{dx}{y}.$$

This equality, on account of (11), implies that $2hT'(h) = \int_{\gamma_h} \left(\frac{G-K}{2C} \right) (x) \frac{dx}{y}$. This proves the result because a straightforward computation shows that $R = \frac{G-K}{4C}$. \blacksquare

We are now in position to prove the following:

Lemma 3.9. *If $\vartheta \in (0, \frac{1}{6})$, then the period function $T(h)$ of the center at the origin of (7) verifies that $\lim_{h \rightarrow h_m} T'(h) = -\infty$, where $h_m = A(-\vartheta)$ is the energy level of the outer boundary of \mathcal{P} , see Figure 4.*

Proof. By applying Lemma 3.8 taking $A(x) = \frac{1}{2}x^2 - x^3$, $C(x) = x + \vartheta$ and $K(x) = 2(x + \vartheta)$ it follows that $T'(h) = \frac{1}{h} \int_{\gamma_h} R(x) \frac{dx}{y}$ with

$$R(x) := \frac{x(4\vartheta + 1 - (6\vartheta + 1)x)}{4(x + \vartheta)(3x - 1)^2}.$$

The relative position of the straight line $x = -\vartheta$ with respect to the graph of A is as displayed in Figure 4 because $A(-\vartheta) - A(\frac{1}{3}) = \frac{1}{54}(6\vartheta - 1)(3\vartheta + 1)^2$ and, by assumption, $\vartheta \in (0, \frac{1}{6})$. Accordingly if $h \in (0, \frac{1}{54})$ then $h - A(x) = (x - x_h^-)(x - x_h^+)(x - \hat{x}_h)$, where $x_h^- < 0 < x_h^+ < \frac{1}{3} < \hat{x}_h$. In particular, for $h \in (0, h_m)$, the projection of the periodic orbit γ_h on the x -axis is the interval $[x_h^-, x_h^+]$. Hence $T'(h) = \frac{2}{h}(I_1(h) + I_2(h))$, where

$$I_1(h) = \int_{x_h^-}^0 f(x, h) dx \quad \text{and} \quad I_2(h) = \int_0^{x_h^+} f(x, h) dx$$

with

$$f(x, h) = \frac{R(x)\sqrt{C(x)}}{\sqrt{h - A(x)}} = \frac{x(4\vartheta + 1 - (6\vartheta + 1)x)}{4(3x - 1)^2 \sqrt{x + \vartheta} \sqrt{(x - x_h^-)(x - x_h^+)(x - \hat{x}_h)}}.$$

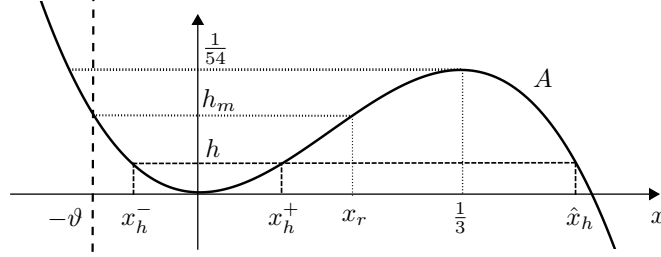


Figure 4: Root distribution of $h - A(x) = (x - x_h^-)(x - x_h^+)(x - \hat{x}_h)$ in the proof of Lemma 3.9

Let us write $f(x, h) = \frac{g_1(x, h)}{\sqrt{(x+\vartheta)(x-x_h^-)}}$, where

$$g_1(x, h) := \frac{x(4\vartheta + 1 - (6\vartheta + 1)x)}{4(3x - 1)^2 \sqrt{(x - x_h^+)(x - \hat{x}_h)}}.$$

Note that g_1 is a continuous function on $(-\infty, 0] \times (0, \frac{1}{54})$. Consequently there exists $M_1 \in \mathbb{R}$ such that $M_1 := \sup\{g_1(x, h); (x, h) \in [-\frac{1}{6}, 0] \times [\frac{1}{2}h_m, h_m]\}$. In addition, observe that M_1 is strictly negative because one can verify that $4\vartheta + 1 - (6\vartheta + 1)x > 0$ for all $x < 0$ and $\vartheta > 0$. Thus for $h \in (\frac{1}{2}h_m, h_m)$ we have that

$$\begin{aligned} I_1(h) &= \int_{x_h^-}^0 \frac{g_1(x, h) dx}{\sqrt{(x + \vartheta)(x - x_h^-)}} \leq M_1 \int_{x_h^-}^0 \frac{dx}{\sqrt{(x + \vartheta)(x - x_h^-)}} \\ &= M_1 \log \left(\frac{\vartheta - x_h^- + \sqrt{-\vartheta x_h^-}}{\vartheta + x_h^-} \right) \rightarrow -\infty \text{ as } h \rightarrow h_m. \end{aligned}$$

In the inequality above we take $-\frac{1}{6} < -\vartheta < x_h^-$ into account, whereas the limit follows by using $M_1 < 0$ and the fact that x_h^- tends to $-\vartheta$ as $h \rightarrow h_m$. Accordingly,

$$\lim_{h \rightarrow h_m} I_1(h) = -\infty. \quad (12)$$

In order to study I_2 let us write $f(x, h) = \frac{g_2(x, h)}{\sqrt{x_h^+ - x}}$, where

$$g_2(x, h) := \frac{x(4\vartheta + 1 - (6\vartheta + 1)x)}{4(3x - 1)^2 \sqrt{(x + \vartheta)(x - x_h^-)(\hat{x}_h - x)}}.$$

Since g_2 is continuous on $[0, \frac{1}{3}] \times (0, \frac{1}{54})$, $M_2 := \sup\{g_2(x, h); (x, h) \in [0, x_r] \times [\frac{1}{2}h_m, h_m]\}$ is a well defined

real number. Consequently if $h \in (\frac{1}{2}h_m, h_m)$, then

$$I_2(h) = \int_0^{x_h^+} \frac{g_2(x, h) dx}{\sqrt{x_h^+ - x}} \leq M_2 \int_0^{x_h^+} \frac{dx}{\sqrt{x_h^+ - x}} = 2M_2 \sqrt{x_h^+} < \frac{2M_2}{\sqrt{3}}.$$

Due to $T'(h) = \frac{2}{h}(I_1(h) + I_2(h))$, the above inequality together with (12) imply the result. \blacksquare

Proof of Theorem 2.5. Thanks to Proposition 3.5 it suffices to consider $\vartheta \in (0, \frac{1}{6})$. For these parameter values, see Figure 4, the projection of the period annulus on the x -axis is $(-\vartheta, x_r)$, where $A(x_r) = A(-\vartheta)$. We proceed in exactly the same way as we did with Proposition 3.5, i.e., by applying Proposition 3.1 together with Proposition 3.2, but in this case we must use ℓ_3 , since neither ℓ_1 nor ℓ_2 provide decisive information. Since $\mathcal{B}_\sigma(f) \circ \sigma = -\mathcal{B}_\sigma(f)$ and σ maps $(0, x_r)$ to $(x_\ell, 0)$, for convenience we shall study the latter interval, which in this case is $(-\vartheta, 0)$. One can verify that

$$\ell_3(x) = \frac{p(x)}{(3x-1)^7(x+\vartheta)^{5/2}},$$

where p is a polynomial of degree 7 in x (depending also polynomially on ϑ), which we do not write for the sake of brevity. Therefore $L(x, \ell_3(x)) \equiv 0$ with $L(x, y) := (x+\vartheta)^5(3x-1)^{14}y^2 - p(x)^2$. Recall also that $S(x, \sigma(x)) \equiv 0$, where S is the polynomial given in (8). A computation shows that $\text{Res}_z(L(x, z), L(y, z)) = 2^{-20}(x-y)^2 \hat{T}(x, y)^2$, with $\hat{T} \in \mathbb{R}[x, y]$ of degree 32, depending also polynomially on ϑ . Finally $\mathcal{Z}(x) := \text{Res}_y(S(x, y), T(x, y)) = (3x-1)^{20}R(x)$, where $R \in \mathbb{R}[x, \vartheta]$ with $\deg(R; x) = 44$. For each $\vartheta \in (0, \frac{1}{6})$ let us define $\mathcal{Z}(\vartheta)$ to be the number of zeros, counted with multiplicities, of R on $(-\vartheta, 0)$. To study this number we consider the value of R at the endpoints of $(-\vartheta, 0)$,

$$R(0) = 2^{11}5^3 \vartheta^{12} (1+4\vartheta) (60\vartheta^2 + 12\vartheta - 1) (48\vartheta^2 + 24\vartheta - 1) (2\vartheta + 1)^5,$$

and

$$R(-\vartheta) = 16 \vartheta^{12} (1+3\vartheta)^{10} (2\vartheta + 1)^{12} (6\vartheta - 1)^{14},$$

together with the discriminant of R with respect to x , $\text{Disc}_x(R)$, which is a polynomial $\mathcal{D}(\vartheta)$ of degree 1586 that we do not write here for brevity. One can easily check that $R(-\vartheta)$ does not vanish and that $R(0)$ has exactly two roots on $(0, \frac{1}{6})$, namely

$$\vartheta_1 := -\frac{1}{4} + \frac{1}{6}\sqrt{3} \approx 0.03867 \quad \text{and} \quad \vartheta_2 := -\frac{1}{10} + \frac{1}{15}\sqrt{6} \approx 0.06330$$

By applying Sturm's Theorem to each factor, we conclude that on $(0, \frac{1}{6})$ the discriminant $\mathcal{D}(\vartheta)$ vanishes only at $\vartheta = \vartheta_2$. Hence $\mathcal{Z}(\vartheta)$ is constant on $I_1 := (0, \vartheta_1)$, $I_2 := (\vartheta_1, \vartheta_2)$ and $I_3 := (\vartheta_2, \frac{1}{6})$. Taking one parameter value on each interval and applying Sturm's Theorem once again we can assert that $\mathcal{Z}(\vartheta) = 0$ for all $\vartheta \in I_1$, $\mathcal{Z}(\vartheta) = 1$ for all $\vartheta \in I_2$ and $\mathcal{Z}(\vartheta) = 2$ for all $\vartheta \in I_3$. Therefore, by Proposition 3.2, it follows that the number of zeros, counted with multiplicities, of $\mathcal{B}_\sigma(\ell_3)(x)$ on $(-\vartheta, 0)$ is at most 0, 1 and 2, for $\vartheta \in I_1$, $\vartheta \in I_2$ and $\vartheta \in I_3$, respectively. Hence, thanks to Proposition 3.1, we can assert that the period function is monotonous for $\vartheta \in I_1$, whereas it has at most 1 (respectively, 2) critical periods for $\vartheta \in I_2$ (respectively, $\vartheta \in I_3$), counted with multiplicities.

Recall at this point that, in view of Lemma 3.4, the first period constant of the center is given by $\Delta_1 = 60\vartheta^2 + 12\vartheta - 1$. On the other hand, by Lemma 3.8, we know that $\lim T'(h) = -\infty$ as h tends to

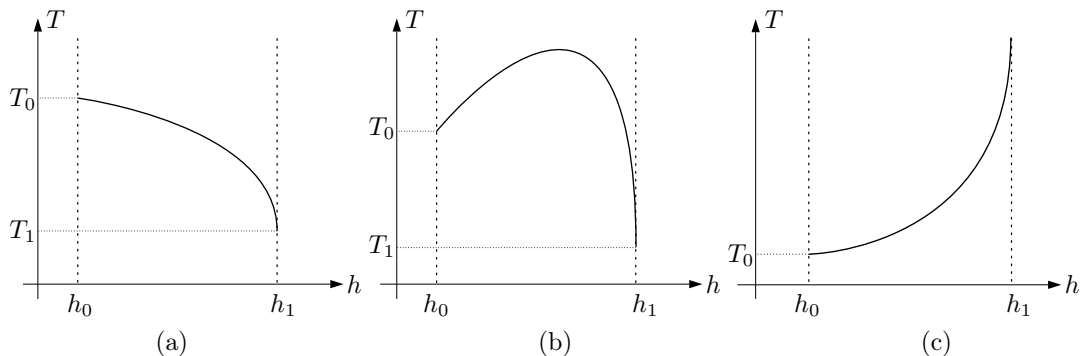


Figure 5: Sketch of the graph of the period function $T(h)$ corresponding to Theorem 2.5: (a) for $\vartheta \in (0, -\frac{1}{10} + \frac{1}{15}\sqrt{6}]$; (b) for $\vartheta \in (-\frac{1}{10} + \frac{1}{15}\sqrt{6}, 1/6)$; and (c) for $\vartheta \in [1/6, \infty)$.

h_m for all $\vartheta \in (0, \frac{1}{6})$. Since $\Delta_1 = 0$ for $\vartheta = -\frac{1}{10} \pm \frac{1}{15}\sqrt{6}$, we conclude that $T(h)$ is monotonous decreasing near the endpoints of $(0, h_m)$ for all $\vartheta \in (0, \vartheta_2)$. For the same reason, if $\vartheta \in I_3$ then $T(h)$ is increasing near $h = 0$ and decreasing near $h = h_m$. On account of the upper bounds on the number of critical periods that we have previously obtained, we conclude that the period function is monotonous decreasing for $\vartheta \in I_1 \cup I_2$ and it has a unique critical period, which is a maximum, for $\vartheta \in I_3$.

The fact that the period function is monotonous decreasing for $\vartheta = \vartheta_1$ can be proved by showing that $\mathcal{B}_\sigma(\ell_1)$ does not vanish on $(-\vartheta_1, 0)$ and using that $\Delta_1 < 0$ at $\vartheta = \vartheta_1$. Since this is easy we do not include it here for the sake of brevity. The proof for $\vartheta = \vartheta_2$ is slightly different but straightforward as well. We show first that $\mathcal{B}_\sigma(\ell_3)$ has at most one zero on $(-\vartheta_2, 0)$ counted with multiplicities. By Proposition 3.1 this implies that the period function has at most one critical period. To prove that it has none we take the behaviour of the period function at the endpoints of $(0, h_m)$ into account. Since $\Delta_1 = \Delta_2 = 0$ and $\Delta_3 < 0$ at $\vartheta = \vartheta_2$ by Lemma 3.4, we have that it is decreasing near $h = 0$. We know that it is also decreasing near $h = h_m$ thanks to Lemma 3.8. Thus it can not have any critical period. This completes the proof. \blacksquare

Remark 3.10. By means of standard techniques one can obtain the limit value of the integral defining the period function at the endpoints of its interval of definition. Combining this information with the results in Theorem 2.5 and Section 3 we get the graphs of the period function $T(h)$ displayed in Figure 5. For the sake of brevity we omit the computations of the explicit values

$$T_0 = 2\pi\sqrt{2\vartheta} \quad \text{and} \quad T_1 = 2 \ln \left(\frac{(2\vartheta + 1)(1 - 6\vartheta)}{1 + 6\vartheta - 4\sqrt{\vartheta}(1 + 3\vartheta)} \right).$$

Note that T_0 and T_1 are strictly positive whenever they are defined. Taking into account the relation between period and wave length, cf. Remark 2.4, this shows that there do not exist smooth periodic TWS of CH with arbitrarily small wave length. Finally, we point out that $\vartheta = -\frac{1}{10} + \frac{1}{15}\sqrt{6}$ and $\vartheta = 1/6$ are, respectively, bifurcation values of the period function at the inner and outer boundary of the period annulus, see [31]. \square

References

- [1] A. Boutet de Monvel, A. Kostenko, D. Shepelsky, G. Teschl, Long-time asymptotics for the Camassa-Holm equation, *SIAM J. Math. Anal.* 41 (2009) 1559–1588.
- [2] A. Bressan, A. Constantin, Global conservative solutions of the Camassa-Holm equation, *Arch. Ration. Mech. Anal.* 183 (2007) 215–239.
- [3] A. Bressan, A. Constantin, Global Dissipative Solutions of the Camassa-Holm Equation, *Anal. Appl.* 5 (2007) 1–27.
- [4] R. Camassa, D.D. Holm, An integrable shallow water equation with peaked solitons, *Phys. Rev. Lett.* 71 (1993) 1661–1664.
- [5] R. Camassa, D.D. Holm, J.M. Hyman, A new integrable shallow water equation, *Adv. Appl. Mech.* 31 (1994) 1–33.
- [6] C. Chicone, *Ordinary Differential Equations with Applications*, Springer, New York, 2006.
- [7] A. Constantin, On the scattering problem for the Camassa-Holm equation, *Proc. Roy. Soc. London Ser. A* 457 (2001) 953–970.
- [8] A. Constantin, J. Escher, Global existence and blow-up for a shallow water equation, *Ann. della Sc. Norm. Super. di Pisa* 26 (1998) 303–328.
- [9] A. Constantin, J. Escher, Wave breaking for nonlinear nonlocal shallow water equations, *Acta Math.* 181 (1998) 229–243.
- [10] A. Constantin, J. Escher, Well-posedness, global existence and blowup phenomena for a periodic quasi-linear hyperbolic equation, *Comm. Pure Appl. Math.* LI (1998) 475–504.
- [11] A. Constantin, V.S. Gerdjikov, R.I. Ivanov, Inverse scattering transform for the Camassa-Holm equation, *Inverse Probl.* 22 (2006) 2197–2207.
- [12] A. Constantin, D. Lannes, The hydrodynamical relevance of the Camassa-Holm and Degasperis-Procesi equations, *Arch. Ration. Mech. Anal.* 192 (2009) 165–186.
- [13] A. Constantin, J. Lenells, On the Inverse Scattering Approach to the Camassa-Holm Equation, *J. Nonlinear Math. Phys.* 10 (2003) 252–255.
- [14] A. Constantin, W. Strauss, Stability of the Camassa-Holm solitons, *J. Nonlinear Sci.* 12 (2002) 415–422.
- [15] D.A. Cox, J. Little, D. O’Shea, *Ideals, varieties, and algorithms. An introduction to computational algebraic geometry and commutative algebra*, Undergraduate Texts in Mathematics. Springer, New York, 3 edition, 2007.
- [16] R. Danchin, A few remarks on the Camassa-Holm equation, *Differ. Integr. Equations* 14 (2001) 953–988.
- [17] K. El Dika, L. Molinet, Exponential decay of H^1 -localized solutions and stability of the train of N solitary waves for the Camassa-Holm equation., *Philos. Trans. Roy. Soc. London Ser. A* 365 (2007) 2313–31.
- [18] B. Fuchssteiner, A.S. Fokas, Symplectic structures, their Bäcklund Transformations and hereditary symmetries, *Phys. D* 4 (1981) 821–831.

- [19] W. Fulton, Introduction to intersection theory in algebraic geometry, CBMS Regional Conference Series in Mathematics, volume 54, American Mathematical Society, Providence, RI, 1984.
- [20] A. Garijo, J. Villadelprat, Algebraic and analytical tools for the study of the period function, *J. Differential Equations* 257 (2014) 2464–2484.
- [21] A. Gasull, A. Guillamon, V. Mañosa, An Explicit Expression of the First Liapunov and Period Constants with Applications, *J. Math. Anal. Appl.* 211 (1997) 190–212.
- [22] M. Grau, F. Mañosas, J. Villadelprat, A Chebyshev criterion for abelian integrals, *Trans. Amer. Math. Soc* 363 (2011) 109–129.
- [23] K. Grunert, H. Holden, X. Raynaud, Global conservative solutions to the Camassa-Holm equation for initial data with nonvanishing asymptotics, *Discret. Contin. Dyn. Syst.* 32 (2012) 4209–4227.
- [24] H. Holden, X. Raynaud, Global Conservative Solutions of the Camassa-Holm Equation-A Lagrangian Point of View, *Commun. Partial Differ. Equations* 32 (2007) 1511–1549.
- [25] Y. Ilyashenko, S. Yakovenko, Lectures on analytic differential equations, Graduate Studies in Mathematics, AMS, Vol. 86, 2007.
- [26] R.S. Johnson, Camassa-Holm, Korteweg-de Vries and related models for water waves, *J. Fluid Mech.* 455 (2002) 63–82.
- [27] R.S. Johnson, The Camassa-Holm equation for water waves moving over a shear flow, *Fluid Dyn. Res.* 33 (2003) 97–111.
- [28] R.S. Johnson, The classical problem of water waves: a reservoir of integrable and nearly-integrable equations, *J. Nonlinear Math. Phys.* 10 (2003) 72–92.
- [29] J. Lenells, Traveling wave solutions of the Camassa-Holm equation, *J. Differential Equations* 217 (2005) 393–430.
- [30] Y.A. Li, P.J. Olver, Well-posedness and blow-up solutions for an integrable nonlinearly dispersive model wave equation, *J. Differential Equations* 162 (2000) 27–63.
- [31] P. Mardešić, D. Marín, J. Villadelprat, The period function of reversible quadratic centers, *J. Differential Equations* 224 (2006) 120–171.
- [32] H.P. McKean, Breakdown of a shallow water equation, *Asian J. Math.* 2 (1998) 867–874.
- [33] J. Sotomayor, Lições de Equações Diferenciais Ordinárias, Projeto Euclides, 11. Instituto de Matemática Pura e Aplicada, Rio de Janeiro, 1979.