

# A Proposed Framework For Mobile Internet QoS Customer Satisfaction Using Big Data Analytics Techniques

Ayisat W. Yusuf-Asaju<sup>1, 2</sup>, Zulkhairi Md Dahalin<sup>2</sup>, and Azman Ta'a<sup>2</sup>

<sup>1</sup>University of Ilorin, Nigeria, [ayisatwuraola@gmail.com](mailto:ayisatwuraola@gmail.com)

<sup>2</sup>Universiti Utara Malaysia, Malaysia {zul; azman@uum.edu.my}

## ABSTRACTS

In the past few years, the Nigeria telecommunication industry has experienced tremendous growth and changes to the extent that customers find it much easier to access the internet through their mobile phones. However, the growth in mobile telecoms subscribers comes with challenges of quality of service, which lead to fluctuations in customer satisfaction. Therefore, the present study proposed a customer satisfaction prediction model through the Key performance indicators obtained from the objective measurement of the network traffic using extended and exhaustive study of the literature. The proposed framework would guide mobile network operators on strategies to embark on in order to retain their customers within the network.

**Keywords:** QoS, QoE, Prediction model, Customer perception, big data analytics and Customer satisfaction.

## I. INTRODUCTION

Over the past decades, the telecommunications (telecoms) sector has been the fastest growing industry around the world. For instance, the telecoms industry experienced a tremendous growth of mobile internet users from 3.69 million in 2000 to 3.27 billion in mid 2015 with 45% internet penetration (Internetworldstats, 2015). Also, as at mid 2015, Nigeria has a total of 67.1 million internet users with a total country population of 178.5 million and with an internet penetration rate at 37% (Internetworldstats, 2015). However, the growth of mobile internet users comes with the challenges of network coverage and slow data penetration (Azeez, 2015; Isabona & Ekpenyong, 2015). These challenges result to fluctuations in services (e.g., mobile voice, video, text and data transmission) provided to the customers by the mobile network operators (MNOs) (Rugelj, Volk, Sedlar, Sterle, & Kos, 2014).

In the telecoms industry, among the key drivers of MNOs success are customers experience, expectations, requirements and perception about the

quality of service (QoS) and Quality of Experience (QoE) provided by the MNOs (Agboma & Liotta, 2012). This suggest that, QoS and QoE information are expected to have huge impact on customer satisfaction in terms of the gap between the customer experience and customer expectations (Ibarrola, Saiz, Zabala, & Cristobo, 2014). Hence, the present study considers customer satisfaction as the most significant quality evaluation criteria to determine customer loyalty and retention with a particular network.

To achieve the quality criteria and improve customer satisfaction, the present study employs big data analytics technique as proposed by ITU (2014). The technique has the ability to analyse large data generated in the network traffic of MNOs and one form of the data analytics techniques is predictive analytics, which has the potentials to predict the future based on past occurrences. As a result, the present study propose a mobile internet customer satisfaction prediction model using big data analytics techniques, which is envisage to predict the future customer satisfaction from the previous experiences of the customers while using the service. The remaining structure of the paper is as follows: section 1 discusses the literature on QoS and QoE in mobile telecommunications. Section 2 provides information on QoS and QoE Measurement, while section 3 dwells on Big data analytics and section 4 provides the framework on customer satisfaction prediction model. Finally, section 5 concludes the paper.

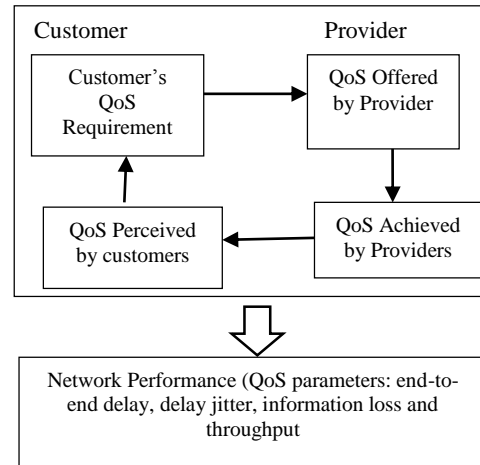
## II. QoS AND QoE IN MOBILE TELECOMMUNICATIONS

According to International telecommunication Union-Telecommunication (ITU-T) Recommendation E.800 (1994), QoS is describe “as the collective effect of service performances that determine the degree of satisfaction of a user of the service.” The description implies that network performance is an antecedent of QoS, which determines the satisfaction of customers with the service provided by the MNOs. Gilski and Stefański (2015) mention that degradation in QoS can be attributed to congestion, delay in network and limited bandwidth as a result of poor capacity

management. In order to monitor such degradation in QoS and ensure allocation of network resources in the case of anomalies detection, the measurement of mobile internet QoS relies on specific parameters such as throughput, information loss ratio, delay and connection set up time (Farid, Shahrestani, & Ruan, 2013; Shaikh, Fiedler, & Collange, 2010; Reichl, Tuffin, & Schatz, 2013). The use of these parameters for QoS measurement enable MNOs to detect variations between the QoS offered and delivered to their respective customers. In addition, Farid et al. (2013) show that the underlying network technologies, network congestion, heterogenous natures of the network traffic and radio channel have effect on QoS condition. Therefore, network traffic management and optimization technologies should be employed in order to enable MNOs improve customer QoS. In fact, customer experience and the technical aspect of QoS is most appropriate for QoS network traffic management. This assumption is in line with the four-layered QoS model defined by ITU-T Recommendation G1000 (2001). This include the QoS requirement, QoS offered, QoS perceived by the customers and QoS achieved by the MNOs. The relationship between the four layers constitutes the overall management of QoS in such a way that the delivering of QoS required by the customers can be planned ahead by the MNOs. This is achievable through monitoring of the network performance. Figure 1 provides a diagrammatical representation of the four-layered QoS model that entails the fundamentals of the practical management of QoS.

Several studies (Ibarrola, Liberal & Ferro, 2010; Koivisto & Urbaczewski, 2004; Stankiewicz, Cholda & Jajszczyk, 2011) had used the four-layered QoS measurement to analyze the relationship between perceived QoS and network performance of MNOs. For instance, Koivisto and Urbaczewski (2004) find no linear relationship between perceived QoS and network performance as indicated by the ITU-T.

**Figure 1: Four-Layered QoS**



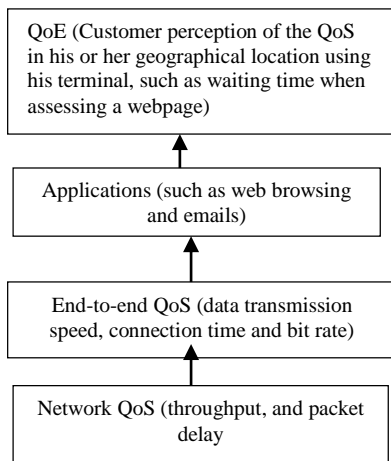
Source: (Farid, et al., 2013; ITU-T Recommendation G1000, 2001).

On the contrary, Ibarrola et al. (2010) and Stankiewicz et al. (2011) document a strong correlation between the network performance and the perceived QoS by the customers. Ibarrola et al (2010) study on QoS management for internet service providers indicate that the recommended process for managing QoS is through the analysis of quality performance measurement, quality of information as perceived by the customers and customer's level of satisfaction. In doing this, it is imperative to define the criteria that are significant to the customers, identify the relationship of such criteria with the network performance, customers perception and expectations. This view is supported by Stankiewicz et al. (2011) whereby they categorise network performance as an intrinsic QoS based on the general QoS model developed by Hardy (2001). The model consists of three layers namely intrinsic QoS, perceived QoS and assessed QoS. The intrinsic QoS describes the network performance, though it is network-centric, but it is very significant to all the aspects of perceived and assessed QoS that is customer-centric (Stankiewicz, et al., 2011). The perceived QoS which reflects the four-layered QoS is influenced by different factors such as the customer experience with the service along with the customers opinions. The layer is the core of the QoS management because it provides the definition of Key performance indicators (KPIs) and Key quality indicators (KQIs), which are useful for defining the QoS required by the customers (Ibarrola, et al., 2014). The assessed QoS comprise of the expectations of customers with the services provided by the MNOs in terms of billing, ordering and correction of errors that occurred while using the provided service (Hardy, 2001). However, ITU-



aforementioned arguments, the present study propose a mobile internet QoS and QoE relationship that would enable the proper correlation between the QoS and QoE while measuring QoS and estimating QoE of the mobile internet customers.

**Figure 3: Mobile Internet QoS and QoE Relationship**



#### IV. QoS AND QoE MEASUREMENT

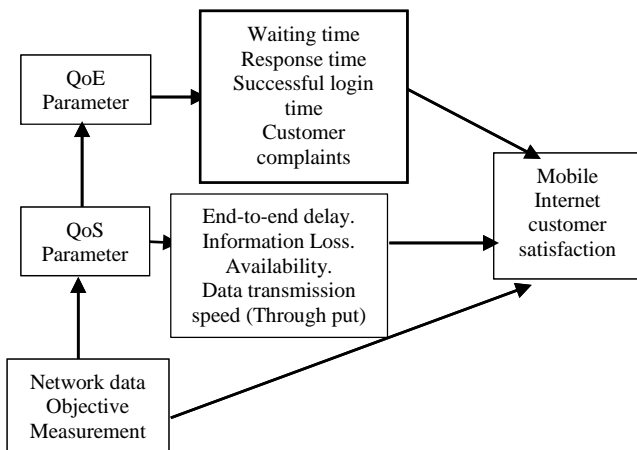
Generally, there are two basic types of measurement for QoS perceived and QoE of the customers. This includes subjective and objective measurement. According to ITU-T Recommendation E.802 (2007) and ITU-T Recommendation G.1030 (2015) subjective measurement is based on human judgement mostly carried out through surveys, while objective measurement makes use of technical means usually algorithms to examine the specific network-related problems with QoS. The subjective measurement may falsify results, time consuming and costly (Fiedler et al., 2010). In contrast, the objective measurement has the capability to imitate and predict customer perception based on the network parameters (Singh et al., 2013). Nonetheless, the objective measurement has the ability to extract customer perception from the detailed analysis of customer behaviour generated through the network traffic, thereby identifying the relationship between the technical parameters and actual customer behaviour (Brooks & Hestnes, 2010; Shaikh et al., 2010). In lieu of this, Spiess, T'Joens, Dragnea, Spencer and Philippart (2014) assert that QoE is a big data problem, because the customers data generated through the network traffic is large and customers perception about the service provided by the MNOs depend on the network reliability, coverage, customer care, service provisioning and billing. Similarly, Yin, Jiang, Lin, Luo and Liu (2014) state that QoE is a direct feedback on

network performance, which implies that, if QoE is below expectation, it signifies that there is a problem with the corresponding QoS metrics. On the other hand, if the QoS metric is lower than a threshold, it means that there is a problem in the network performance. Zheng et al. (2016) as well mention that the big data obtained from the objective measurement platform has the potentials to uncover hidden insights on the customers experience that can be used by the MNOs to improve their services. Therefore, customer satisfaction can be modelled by mapping the QoS and QoE metrics using the big data generated in the objective measurement platform or customer historical data of the network traffic of the MNOs. These data can be analysed using big data analytics and can be used by the MNOs to improve the services offered to their customers.

#### V. SUGGESTED CUSTOMER SATISFACTION PREDICTION FRAMEWORK

The suggested framework is based on Ibarrola et al. (2014), Farid et al. (2013), Ibarrola et al. (2011), Ibarrola et al. (2010) and ITU-T Recommendation G1000 (2001). The parameters of the framework are derived from detailed analysis of prior literature. The three main elements of the framework are objective measurement, QoS parameters and QoE parameters. The QoS parameters consists of end-to-end delay, information loss, availability, and data transmission speed (throughput), while QoE consists of network response time, waiting time and customer complaints response time. The combination of all these elements along with their parameters can be used for customer satisfaction prediction model by mapping the QoS parameters and QoE parameters. This is because the network data which constitute the QoS parameters support the use of big data analytics algorithms. This can further be enhanced by predicting the future occurrences of the network traffic. This would enable the determination of variations in the QoS provided by the MNOs and the QoE observed by the customer while using the mobile internet services. Figure 4 presents the framework.

**Figure 4: Customer Satisfaction Prediction Conceptual Framework**



**Table 1: Parameters of customers satisfaction prediction framework from the Literature**

Authors	Elements	Parameters
Diaz-Aviles et al. (2015); Egger et al. (2012); Fiedler et al. (2010); Shaikh et al. (2010)	QoE	Waiting time, Response time, Successful login time, customer complaints response time.
De Moor et al. (2010); Fiedler et al. (2010); Farid et al. (2013); Gilski and Stefański (2015); Ibarrola, et al. (2010); Ibarrola et al. (2011); Ibarrola et al. (2014); Reichl et al. (2013).	QoS	End-to-end delay, Information loss, Availability, Data transmission speed(Through put)
Brooks and Hestnes (2010); ITU-T Recommendation E.802 (2007); (ITU-T Recommendation G.1030 (2015); Shaikh et al. (2010); (Singh, et al., 2013)	Objective Measurement	Network data Measurement

## VI. BIG DATA ANALYTICS

Big data is a collection of large amount of structured and unstructured data that is difficult to analyze using the traditional data management tools (Tiwari, Chaudhary, & Yadav, 2015). The term big data is characterised in terms of volume, variety, velocity, value and veracity of the data (Chandarana & Vijayalakshmi, 2014; ITU, 2014; Sharma, Vaidya, Chaudhary, & Jora, 2015; Tiwari, et al., 2015). Volume describes the mass and quality of the data, velocity entails the speed of data

generation, variety comprises different types of generated data, veracity bring about the accuracy and quality of data sources while value constitutes the potentials of the data to be used to a particular analysis (Chandarana & Vijayalakshmi, 2014; ITU, 2014; Sharma, et al., 2015; Tiwari, et al., 2015). All these characteristics constitute data generated through the network traffic in telecoms industry. The massive amount of data is generated on a day to day basis because of the tremendous increase on the customers mobile internet data subscription. Additionally, the data is of different types such as customer data and application usage behaviour, customer care data, demographics data and traffic data (ITU, 2014). The fast speed of the data generated in the network traffic complies with the big data velocity and is accurate enough because it is generated through the objective measurement (Chandarana & Vijayalakshmi, 2014; ITU, 2014). Thus, appropriate big data analytics tools or techniques can be used to extract important insights useful for an improved decision making which can be used by MNOs to improve their services.

Generally, there are three types of big data analytics; namely; descriptive analytics, predictive analytics and prescriptive analytics (Arora & Malik, 2015). Descriptive analytics employs the use of historical data generated through the network traffic to extract important information from the data. Predictive analytics is concerned with forecasting the future by predicting the future occurrence based on the previous historical data generated through the network traffic. Predictive analytics focuses on decision making through the useful insights extracted from the historical data. This is feasible by having a strong understanding of the suitable analytical techniques which constitutes the statistical analysis, machine learning and data mining algorithms.

According to P. Chen and Zhang (2014), statistical techniques is use to exploits the correlation and casual relationship between diiferent variables. Data mining allows the extraction of valuable information from data, while machine learning makes use of different algorithms to evolve behaviours based on the empirical data. Examples of such algorithms are artificial neural networks, support vector machines, association rules, naïve bayes, k-nearest neighbours, decisions trees,classification, regression, ensembles classifiers, random forest, restricted random forest and many more (Mushtaq, Augustin, & Mellouk, 2012). In addition, P. Chen and Zhang (2014) state that there are several big data framework such as

Hadoop Apache and map/reduce, Dryad, Apache mahout and many more that has the potentials of embedding data mining, statistical and machine learning algorithms to execute large scale data analysis and produce accurate prediction models. Hadoop Apache is the most widely used big data framework because of its reliability, completeness and high scalability (Lim, Chen, & and Chen, 2013; P. Chen & Zhang, 2014).

## VII. KEYS STAGES OF CUSTOMER SATISFACTION PREDICTION MODEL FRAMEWORK

The customer historical data constitutes the customer behaviour and experiences while using the internet service. Thus, it is possible to analyse the historical data to extract end-to-end performance metrics that would provide insight on how to improve the services provided by the MNOs and predict the customer satisfaction based on the relationship exhibited between the QoS and QoE. In addition, Ibarrola et al. (2014) QoXsphere model show that network performance (end-to-end performance) is an antecedent of QoS and QoE is an antecedent of customer satisfaction. As a result, the present study focuses on applying descriptive and predictive analytics method using the historical data generated through the network traffic of the Nigeria MNOs to extract useful information regarding the QoS and QoE parameters, that can be used to predict the level of customer satisfaction. The descriptive analytics provides the summary of descriptive statistics for the large datasets, this will allow the observation of the correlation between the QoS and QoE.

Predictive analytics that generate a prediction model is a central problem in machine learning and it produce a model from the training data set in a diverse large data sets (Kim, Kim, & Kim, 2016). The procedure of prediction modelling is to discover and learn accurate models from a large data sets of the customer historical data. The most significant factor that affect performance of such models depends on the accuracy of the generated prediction model. Because the prediction model is a data-driven model that is generated from an infinite sets of samples called training set. Oftentimes, the training set is a limited sample size, so, real model generated from the data is required to describe all the data points within the large data sets (Kim, et al., 2016). Therefore, algorithm evaluation is

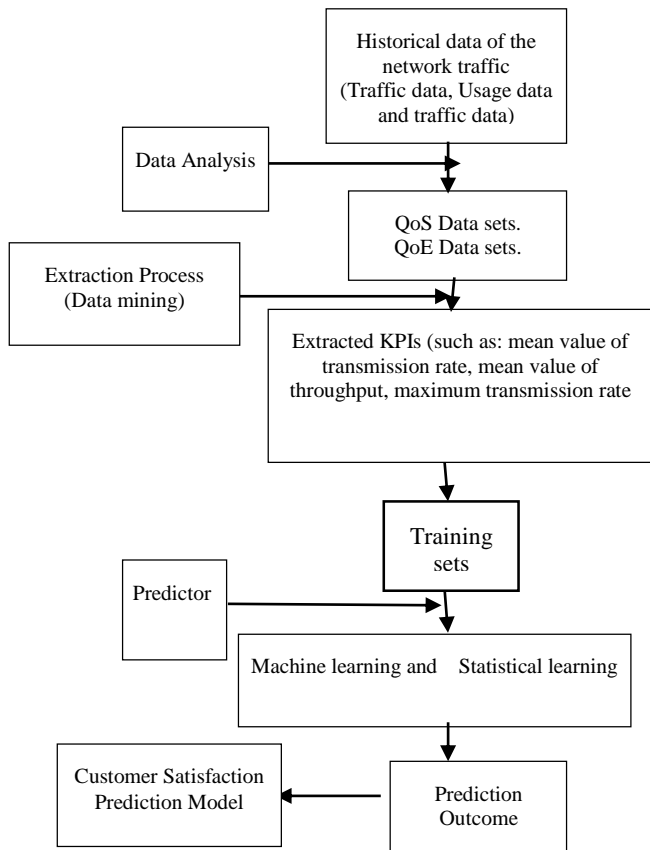
required in order to determine the accurate performance of such prediction models.

In the proposed customer satisfaction prediction model, the KPIs extracted are the parameters that are directly obtained from the objective measurement platform of the network traffic. The obtained KPIs is assumed to constitutes the information that can be used to map the network QoS and QoE of the mobile internet to determine the variations in the threshold of the QoS parameters and QoE of the customers. Based on Rugelj et al. (2014)'s study, it can be assumed that past experience of customers can present a key factor like delay that affects the customer perception of quality and satisfaction. Therefore, the impact of past experience on the present customer perception can be determined by measuring the delay observed by the customers while loading a mobile web page, data transmission speed and the service response time (availability). In addition, the prediction of the customer satisfaction can be modelled based on customer's tolerance of the delay, response time of the internet services and the response time of the customer care to rectify potential faults of the network. This is because the KPIs measurement incorporates current customer experience and perception. Hence, variations in customer expectations with the customer experience can be deduced. This would be adopted to model the customers satisfaction prediction based on the objective measurement of the KPIs. As a result, key stages of the mobile internet QoS customer satisfaction prediction model is shown in Figure 5.

## VIII. CONCLUSION

This study proposes a framework for mobile internet customer satisfaction prediction model. To achieve the propose framework, a mapping of the QoS and QoE relationship is considered using the KPIs obtained from the objective measurement of the mobile network traffic.

**Figure 5: Key Stages Of Proposed Mobile Internet Qos Customer Satisfaction Prediction Model**



The proposed model is envisaged to be implemented in the future with the aid of big data framework. The proposed framework is expected to solve the challenges encountered in QoS provisioning and fluctuations in customer satisfaction. This is possible by predicting the customer satisfaction based on the the previous experience of the customers which would assist the MNOs to understand the trends of the network traffic and make intelligent decisions that would enable them to improve their network performance. The study is forseen to contribute to the growing literature in the area of using big data analytics for improving the mobile internet QoS that would enhance customer satisfaction.

## REFERENCES

Agboma, F., & Liotta, A. (2012). Quality of experience management in mobile content delivery systems. *Telecommun Syst (2012)* 49 doi: 10.1007/s11235-010-9355-6, 85-98.

Arora, D., & Malik, P. (2015). Analytics: Key to go from generating big data to deriving business value. *IEEE First International Conference on Big Data Computing Service and Applications* (pp. 446-452). IEEE Computer Society.

Azeez, K. (2015, October 1). *Telecoms driving economic devt.* Retrieved from newtelegraph: <http://newtelegraphonline.com/telecoms-driving-economic-devt/>

Brooks, P., & Hestnes, B. (2010). User measures of Quality of Experience: Why being objective and quantitative Is important. *IEEE Network*, 8-13.

Chandarana, P., & Vijayalakshmi, M. (2014). Big data analytics frameworks. *International conference on circuits, systems communication and information technology applications (CSACITA)* (pp. 430-434). IEEE.

De Moor, K., Ketyko, I., Joseph, W., Deryckere, T., De Marez, L., Martens, L., & Verleye, G. (2010). Proposed framework for evaluating quality of experience in a mobile testbed- oriented living lab setting. *Mobile Netw Appl* doi: 10.1007/s11036-010-0223-0, 378-391.

Diaz-Aviles, E., Pinelli, F., Lynch, K., Nabi, Z., Gkoufas, Y., Bouillet, E., . . . Salzwedel, J. (2015). Towards real-time customer experience prediction for telecommunication operators. *IEEE International Conference on Big Data (Big Data)* (pp. 1063-1072). IEEE.

egger, S., Hossfeld, T., Schatz, R., & Fiedler, M. (2012). Waiting times in quality of experience for web based services. *QoMEX 2012* (pp. 86-96). IEEE.

Farid, F., Shahrestani, S., & Ruan, C. (2013). Quality of Service concerns in wireless and cellular networks . *Communications of the IBIMA* doi: 10.5171/2013.794626 , 1-15.

Fiedler, M., Hossfeld, T., & Tran-Gia, P. (2010). A generic quantitative relationship between Quality of Experience and Quality of Service. *IEEE Network* 24(2), 36-41.

Gilski, P., & Stefański, J. (2015). Quality Expectations of Mobile Subscribers. *Journal of telecommunications and information technology* 1, 15-19.

Hardy, W. C. (2001). *QoS: Measurement and Evaluation of Telecommunications Quality of Service*. WorldCom, USA: John Wiley & Sons, Ltd .

Ibarrola, E., Liberal, F., & Ferro, A. (2010). Quality of service management for ISPs: A model and implementation methodology based on the ITU-T recommendation E.802 framework. *IEEE Communications magazine*, 146-153.

Ibarrola, E., Saiz, E., Zabala, L., & Cristobo, L. (2014). A new global quality of service model: QoXphere. *IEEE Communications magazine*, 193-199.

Ibarrola, E., Xiao, J., Liberal, F., & Ferro, A. (2011). Internet QoS Regulation in future networks: A user-centric approach. *ITU Kaleidoscope Conference* (pp. 148-155). IEEE Communication magazine.

internetworldstats. (2015, October 29). *Internet Usage Statistics, the internet big picture world internet users and 2015 population stats*. Retrieved from internetworldstats,Miniwatts Marketing Group: <http://www.internetworldstats.com/stats.htm>

Isabona, J., & Ekpenyong, M. (2015). End-User satisfaction assessment approach for efficient networks performance monitoring in wireless communication systems . *African Journal of Computing & ICT* 8(1), 1-16.

ITU. (2014). *Measuring the information society report*. Geneva: International telecommunication union.

ITU-T Recommendation E.800, I. (1994). *Terms and definitions related to quality of service and network performance including dependability*. ITU.

ITU-T Recommendation E.802, I. (2007). *Framework and methodologies for the determination and application of QoS parameters*. ITU.

ITU-T Recommendation G.1030, I. (2015). *Estimating end-to-end performance in IP networks for data applications* . ITU.

ITU-T Recommendation G1000, I. (2001). *Communications quality of service: A framework and definitions*. ITU.

Kilkki, K. (2008). Quality of experience in communication ecosystem. *Journal of universal customer science* 14(5), 615-624.

Kim, J.-S., Kim, E.-S., & Kim, J.-H. (2016). Towards conceptual predictive modeling for big data framework . *International Journal of Software Engineering and Its Applications* 10 (1) , 35-42.

Koivisto, M., & Urbaczewski, A. (2004). The relationship between quality of service perceived and delivered in mobile Internet communications. *Information Systems and e-business management, Springer* doi:10.1007/s10257-004-0045-3, 309-323.

- Lim, E. P., Chen, H., & Chen, G. (2013). Business Intelligence and Analytics: Research directions. *ACM Transactions on Management Information Systems*. 3(4), 1-10.
- Mushtaq, M. S., Augustin, B., & Mellouk, A. (2012). Empirical study based on machine learning approach to assess the QoS/QoE correlation. *17th European Conference on networks and optical communications (NOC)* (pp. 1-7). Vilanova i la Geltru: IEEE doi: 10.1109/NOC.2012.6249939 .
- P. Chen, C., & Zhang, C.-Y. (2014). Data- intensive applications, challenges, techniques and technologies: A survey on big data. *Information science*, <http://dx.doi.org/10.1016/j.ins.2014.01.015>, 1-34.
- Reichl, P., Tuffin, B., & Schatz, R. (2013). Logarithmic laws in service quality perception: where microeconomics meets psychophysics and quality of experience. *Telecommun System* 52(2) doi: 10.1007/s11235-011-9503-7, 587-600.
- Rugelj, M., Volk, M., Sedlar, U., Sterle, J., & Kos, A. (2014). A novel user satisfaction prediction model for future network provisioning. *Telecommunication system*, 56 doi: 10.1007/s11235-013-9853-4 Springer, 417-425.
- Shaikh, J., Fiedler, M., & Collange, D. (2010). Quality of Experience from user and network perspectives. *Ann. Telecommun DOI: 10.1007/s12243-009-0142-x*, Springer, 47-57.
- Sharma, D., Vaidya, P., Chaudhary, K., & Jora, K. (2015). Big data – Competitive intelligence. *2nd International conference on computing for sustainable global development (INDIACom)* (pp. 684-689). India: IEEE.
- Singh, A., Mahmoud, A., Koensgen, A., Li, X., Göerg, C., Kus, M., . . . Grigutsch, J. (2013). Enhancing Quality of Experience (QoE) Assessment Models for Web Traffic. *Institute for Computer Sciences, Social Informatics and Telecommunications Engineering* (pp. 202-215). MONAMI 2013, LNICST 125.
- Spiess, J., T'Joens, Y., Dragnea, R., Spencer, P., & Philippart, L. (2014). Using big data to improve customer experience and business performance. *Bell labs technical journal* 18(4) doi: 10.1002/bltj.21642, 3-17.
- Stankiewicz, R., Cholda, P., & Jajszczyk, A. (2011). QoX: What is it really . *IEEE Communication Magazine*, 148-158.
- Tiwari, A. K., Chaudhary, H., & Yadav, S. (2015). A review on big data and Its security . *IEEE Sponsored 2nd International Conference on Innovations in Information Embedded and Communication Systems* (pp. 1-5). Coimbatore : IEEE doi: 10.1109/ICIIECS.2015.7193110 .
- Yin, H., Jiang, Y., Lin, C., Luo, Y., & Liu, Y. (2014). Big data: Transforming the design philosophy of future internet. *IEEE Network*, 14-19.
- Zheng, K., Yang, Z., Zhang, K., Chatzimisios, P., Yang, K., & Xiang, W. (2016). Big data-driven optimization for mobile networks towards 5G. *IEEE network*, 44-51.