

UNIVERSIDADE DE LISBOA
FACULDADE DE LETRAS
DEPARTAMENTO DE HISTÓRIA



MOREIROS 2 (ARRONCHES):
AS LEITURAS POSSÍVEIS DOS FOSSOS INTERIORES

Volume II - Anexos

Richard Andrew Veríssimo Peace
MESTRADO EM ARQUEOLOGIA

2015

UNIVERSIDADE DE LISBOA
FACULDADE DE LETRAS
DEPARTAMENTO DE HISTÓRIA



MOREIROS 2 (ARRONCHES):
AS LEITURAS POSSÍVEIS DOS FOSSOS INTERIORES

Volume II-Anexos

DISSERTAÇÃO ORIENTADA PELA
PROFESSORA DOUTORA ANA CATARINA SOUSA E PELO
DOUTOR RUI BOAVENTURA

Richard Andrew Veríssimo Peace

MESTRADO EM ARQUEOLOGIA

2015

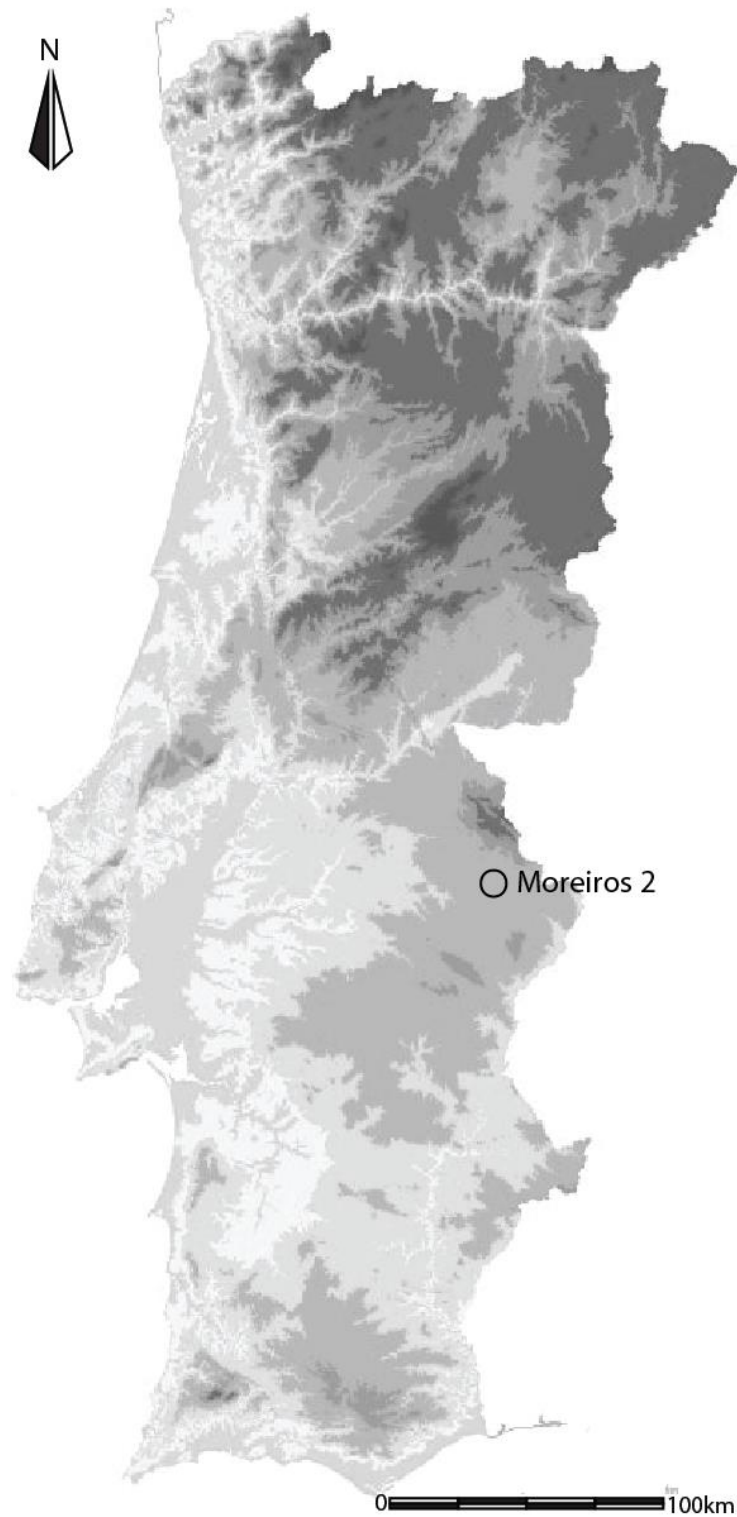
Conteúdo

1. Anexo I – Mapas	4
1.1. Localização de Moreiros 2	4
1.2. Localização Moreiros 2, Carta Militar 1:25 000	5
1.3. Geologia Moreiros 2.....	6
1.4. Visibilidade Moreiros 2.....	7
1.5. Relação entre Moreiros 2 e as Bacias Hidrográficas do Tejo e do Guadiana.....	8
1.6. Sítios Pré-Históricos do Concelho de Arronches	9
2. Anexo II – Documentação de Relatórios.....	10
2.1. Intervenção de 1998	10
2.2. Intervenção de 1999	11
2.3. Levantamento Geofísico.....	12
2.4. Levantamento Geofísico e estruturas identificadas	13
2. Anexo III - Materiais	14
3.1. Quadro de Formas	14
3.1.1. Forma Geral.....	14
3.1.2. Tabela de Bordos.....	15
3.1.3. Gramáticas decorativas.....	16
3.2. Formas Por Ponto	17
3.2.1. Conjunto Geral	17
3.2.2. Fosso 1 (Ponto B)	18
3.2.3. Fosso 3 (Ponto C)	19
3.2.4. Superfície.....	20
3.3. Formas Por Camada	21
2.4.1. Fosso 1 (Ponto B).....	21
2.4.2. Fosso 3 (Ponto C).....	24

3. Anexo IV – Estampas	27
4.1. Forma I (Pratos)	27
4.2. Forma II (Taças)	28
4.3. Forma III (Vasos)	34
4.4. Forma IV (Potes)	45
4.5. Forma V (Carenadas Abertas)	47
4.6. Forma VI (Carenadas Fechadas)	49
4.7. Decoradas com Forma	51
4.8. Modelações plásticas com forma geral	53
4.2. Materiais sem forma geral	55
4.1.1. Decoração	55
4.1.2. Modelações Plásticas	57

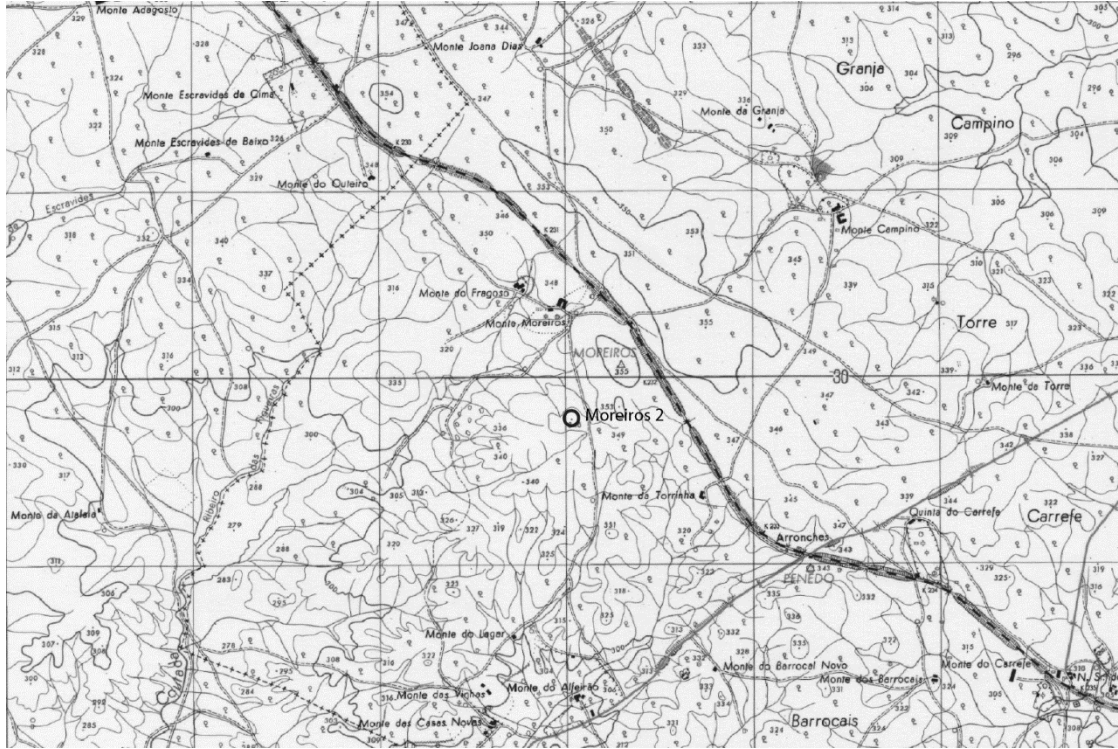
1. Anexo I – Mapas

1.1. Localização de Moreiros 2



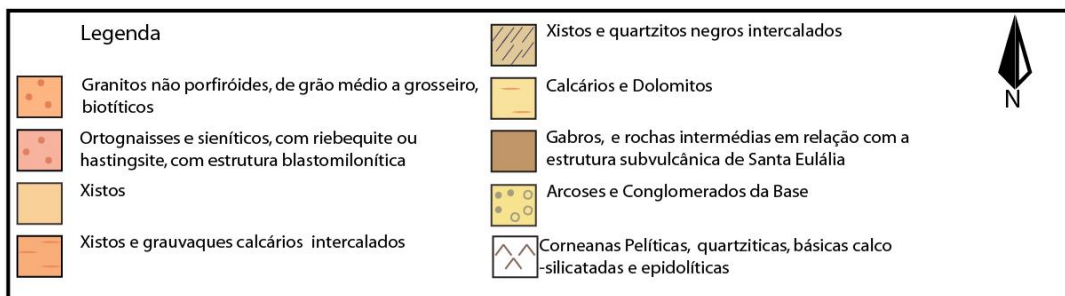
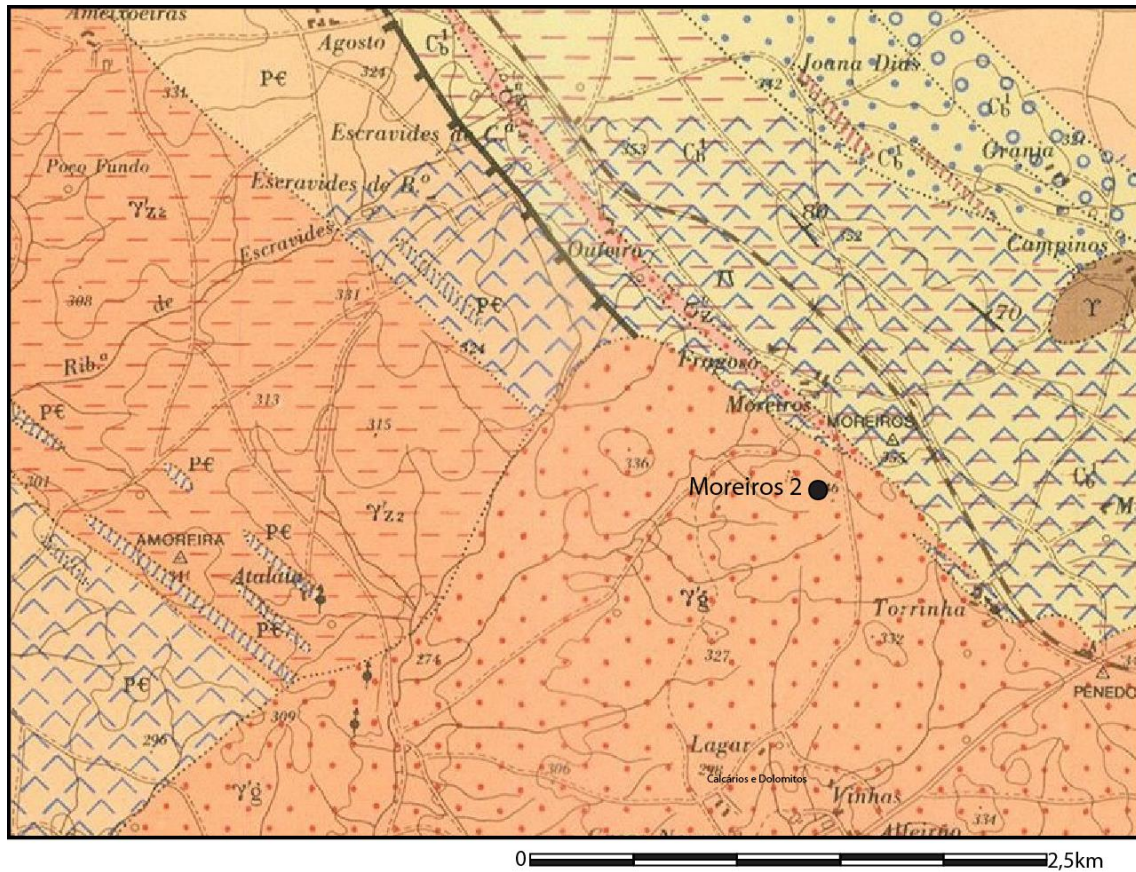
Modificado a partir de Carta Hipsométrica de Portugal (DGRN, 1989)

1.2. Localização Moreiros 2, Carta Militar 1:25 000



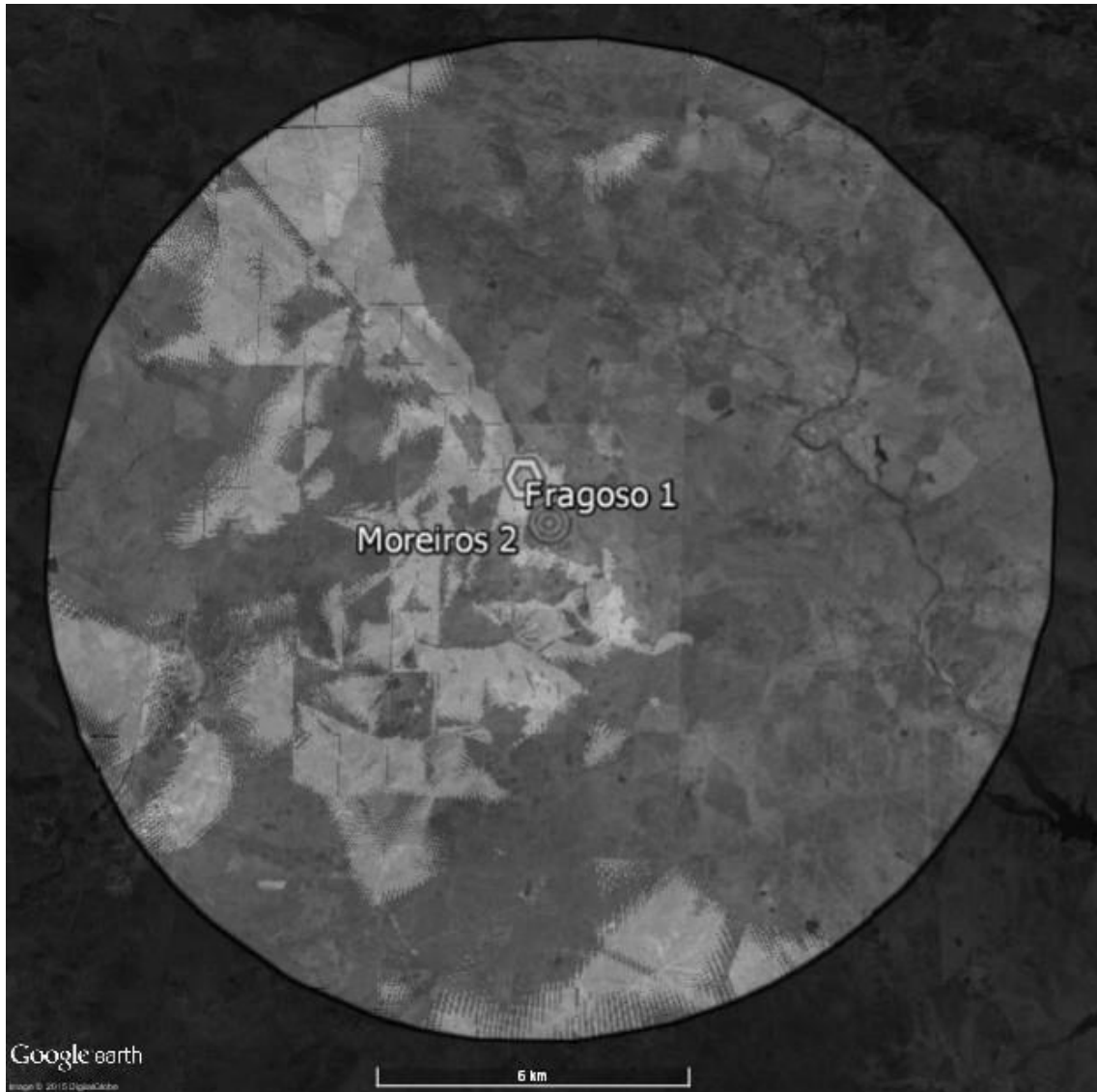
Adaptado de: Igeo, Carta Militar de Portugal, 1:25 000, Folha 385-Arronches

1.3. Geologia Moreiros 2



Modificado a partir da carta geológica 1:50 000 33-C, Campo Maior(Gonçalves, F., 1972)

1.4. Visibilidade Moreiros 2



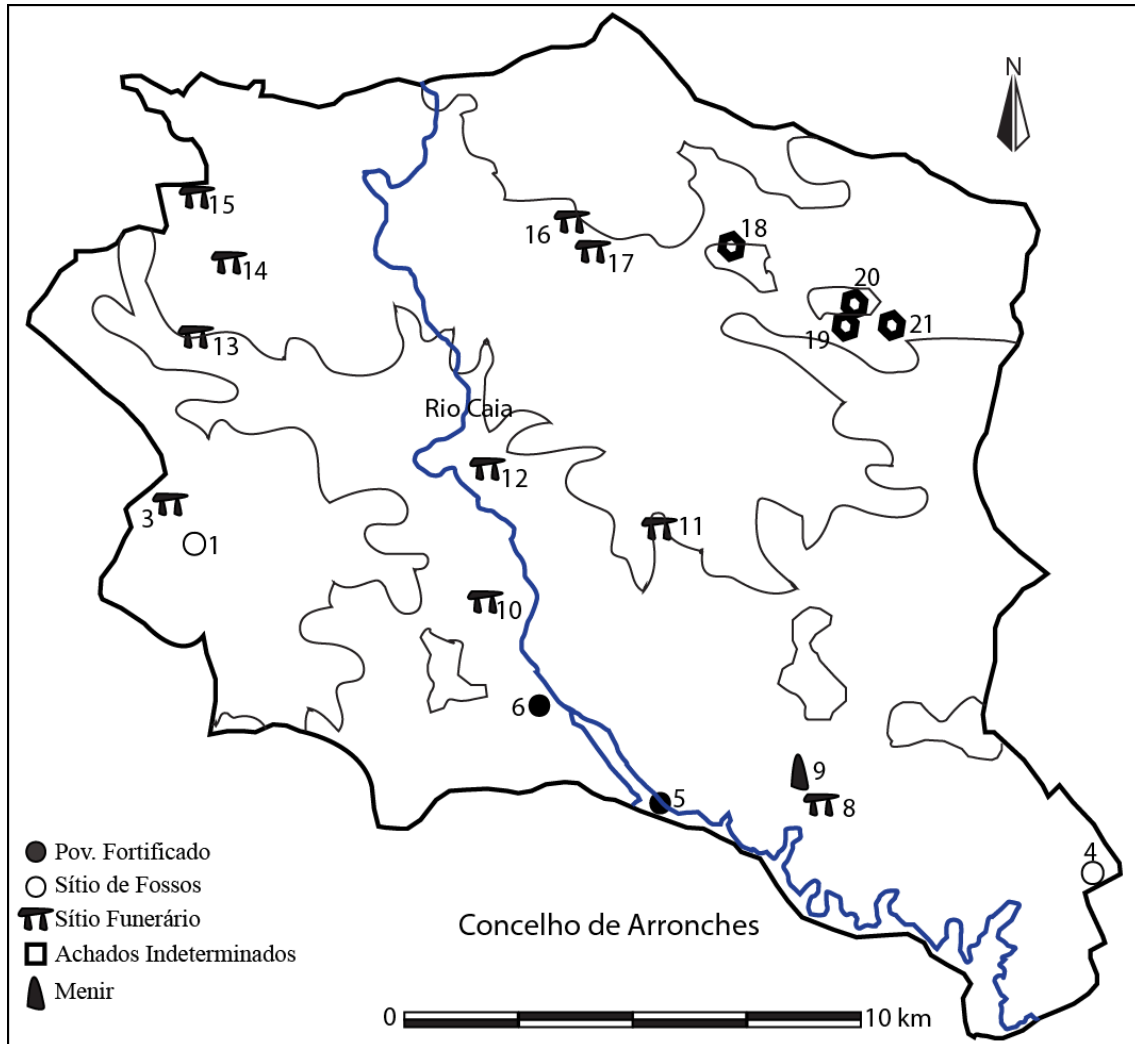
Visibilidade a partir de Moreiros 2, fonte: globalimage, 2015.

1.5. Relação entre Moreiros 2 e as Bacias Hidrográficas do Tejo e do Guadiana



Modificado a partir de Carta Hidrográfica de Portugal (DGRN, 1989)

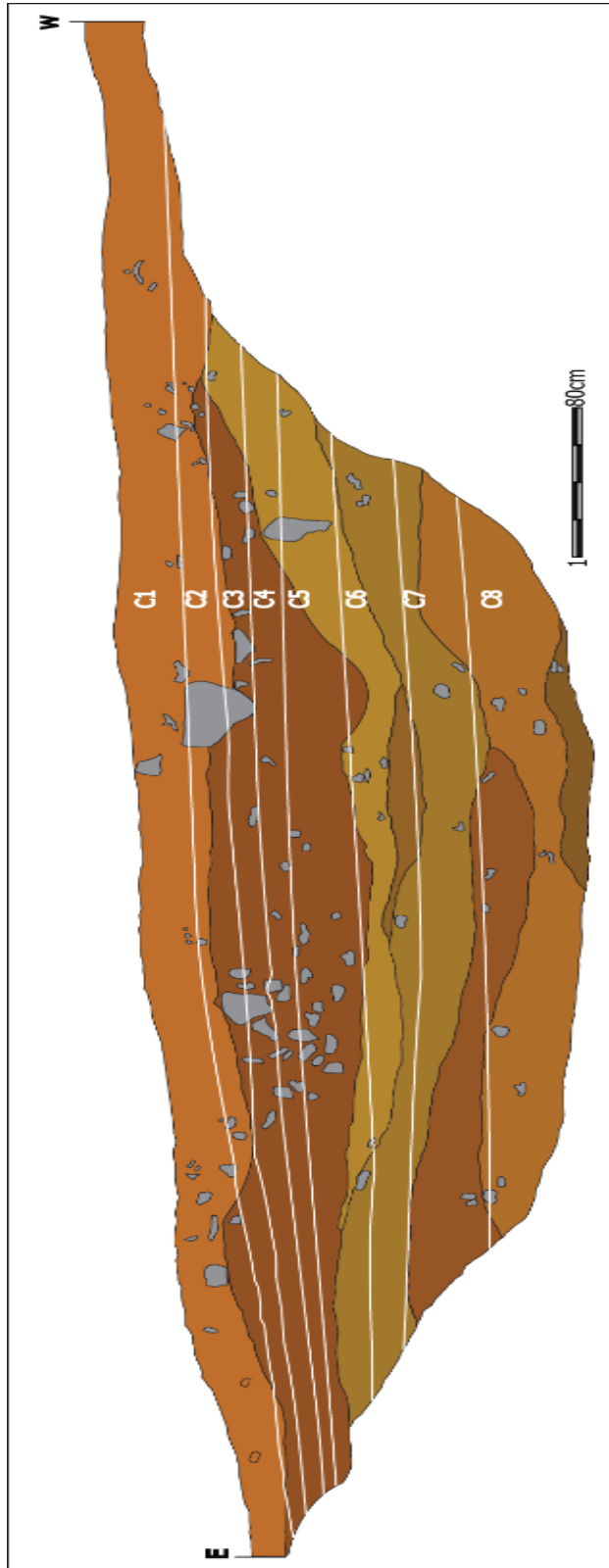
1.6. Sítios Pré-Históricos do Concelho de Arronches



Sítios do Concelho de Arronches: **1** Moreiros 2; **3** Anta do Fragoso; **4** Monte da Contenda; **5** Menisa; **6** Baldio; **8** Monte do Reguengo; **9** Monte do Reguengo (Menir); **10** Vale de Bêbedas; **11** Rasquilha; **12** Santo Antonio; **13** Anta das Casas Brancas; **14** Monte dos Fortes; **15** Anta das Sarnadas; **16** Nave Fria 2; **17** Nave Fria 1; **18** Abrigo Pinho Monteiro; **19** Abrigo da Igreja dos Mouros; **20** Abrigo dos Louções; **21** Abrigo de Vale do Junco.

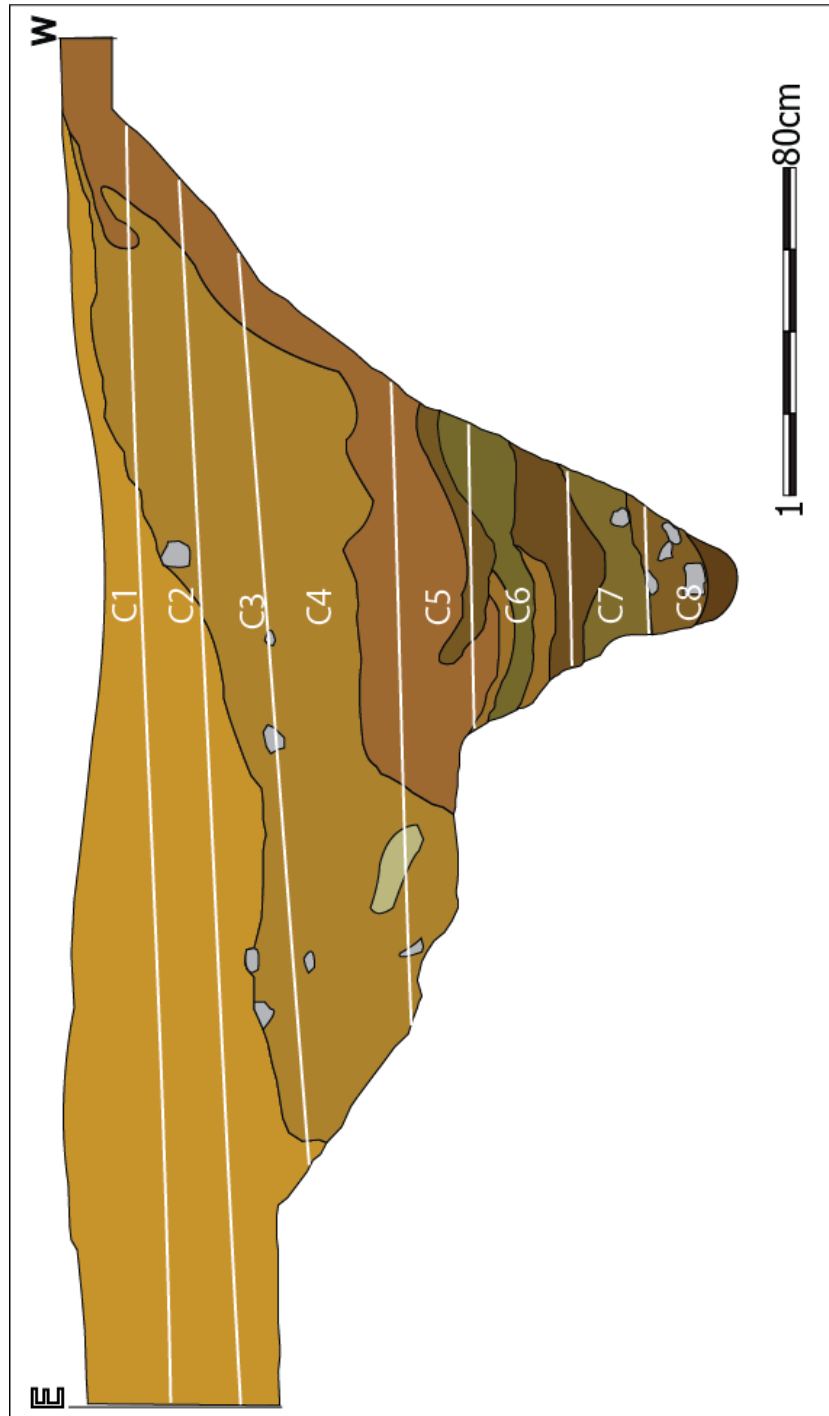
2. Anexo II – Documentação de Relatórios

2.1. Intervenção de 1998



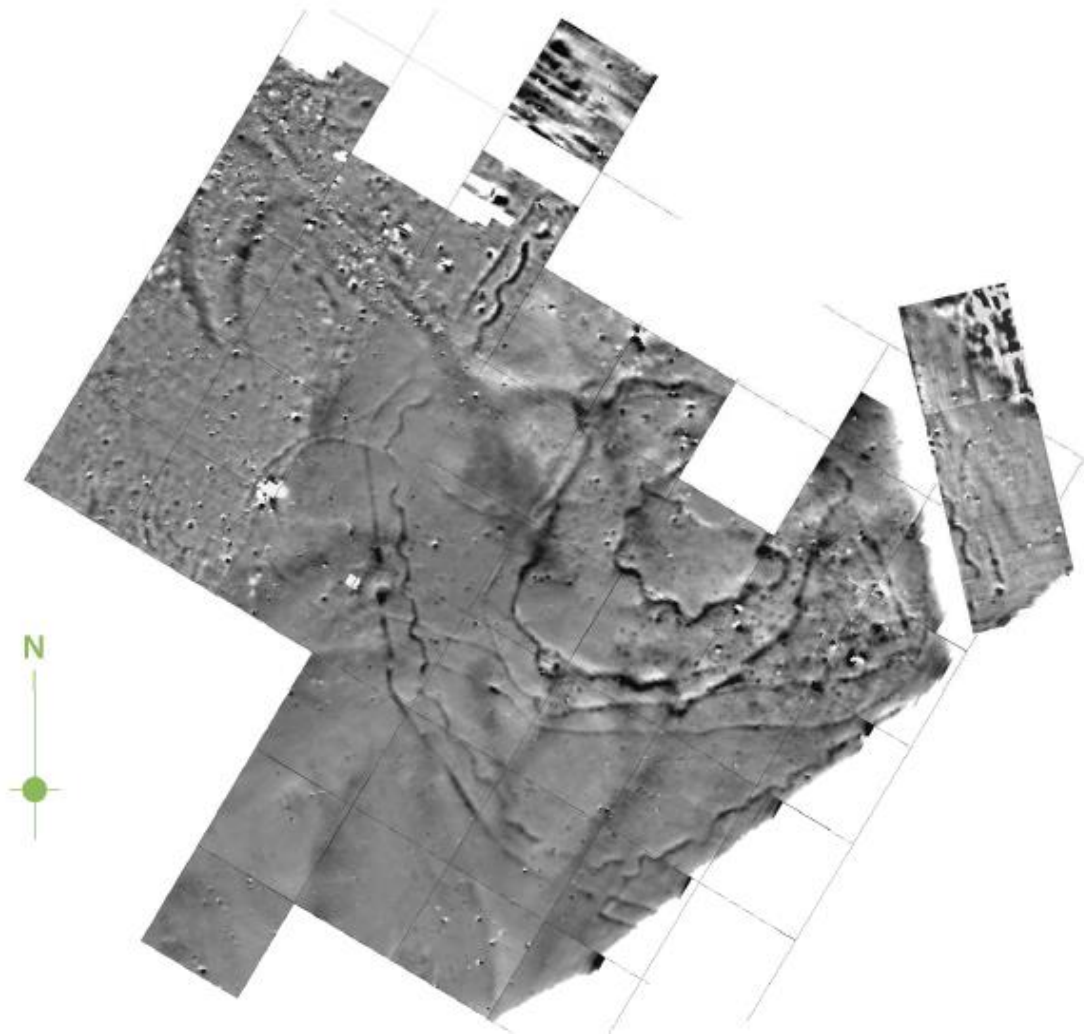
Camadas visíveis no corte do Fosso 1 (Ponto B) e camadas da escavação de 1998

2.2. Intervenção de 1999

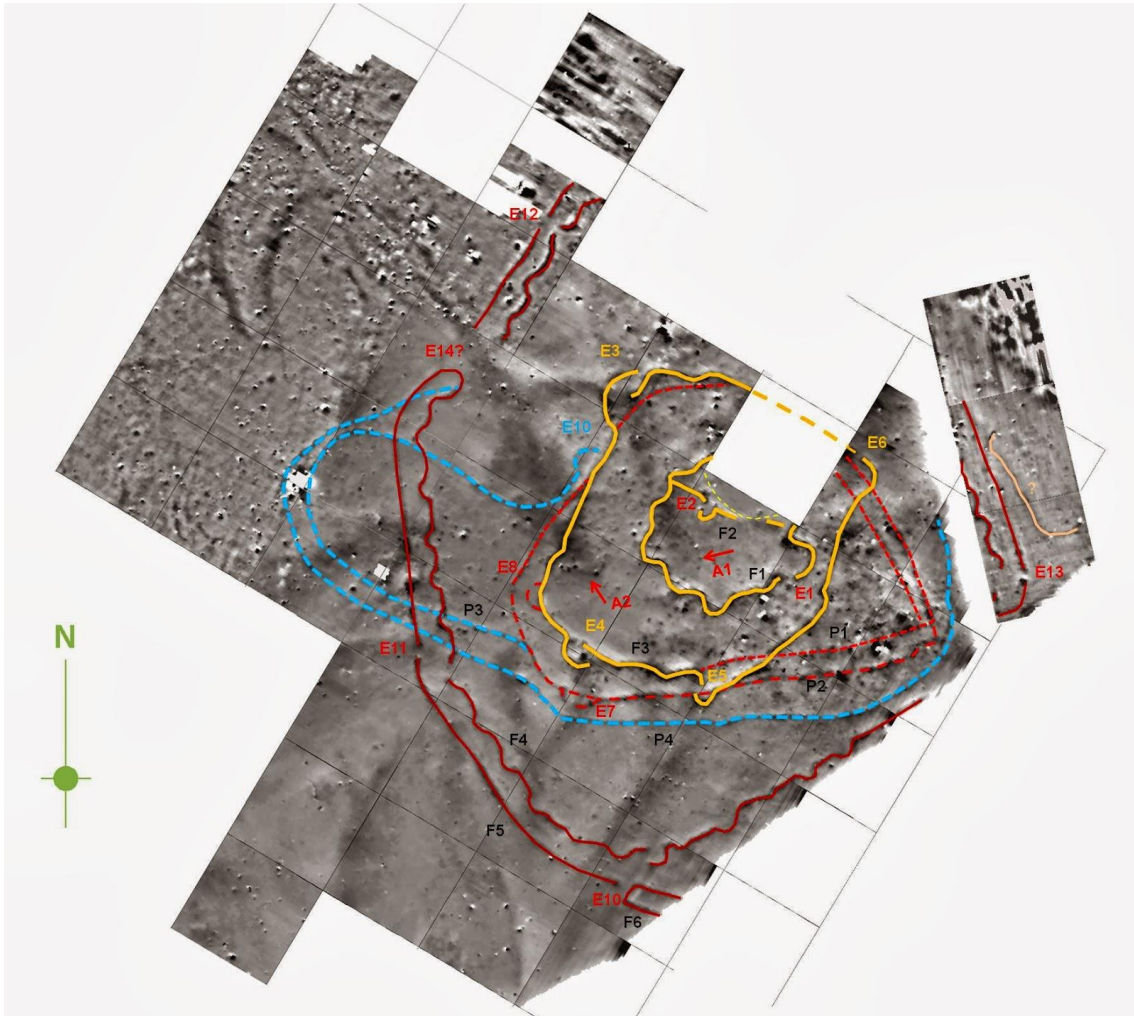


Camadas visíveis no corte do Fosso 3 (Ponto C) e camadas da escavação de 1999

2.3. Levantamento Geofísico



2.4. Levantamento Geofísico e estruturas identificadas

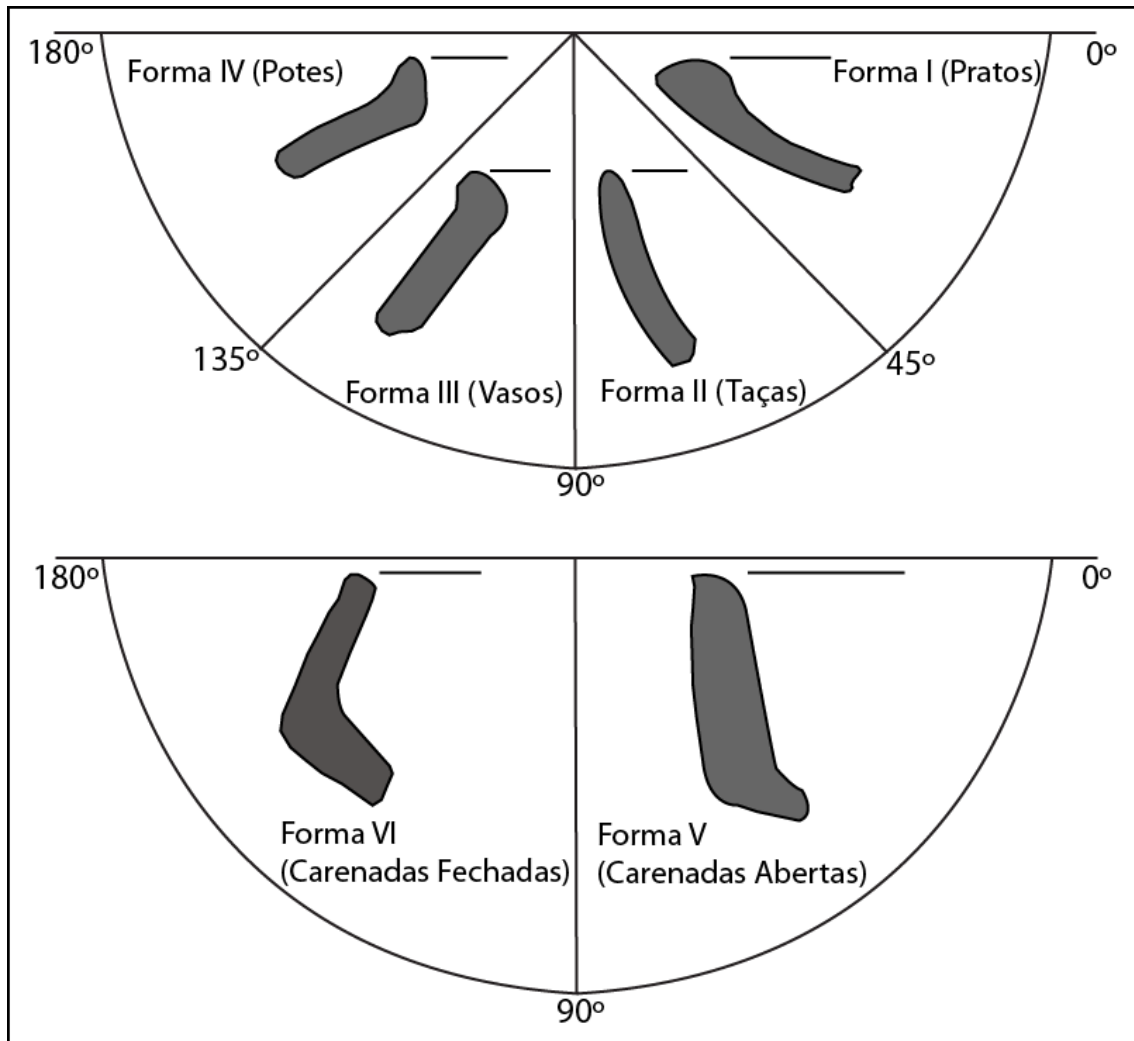


(Valera, Becker, & Boaventura, 2013)

2. Anexo III - Materiais

3.1. Quadro de Formas

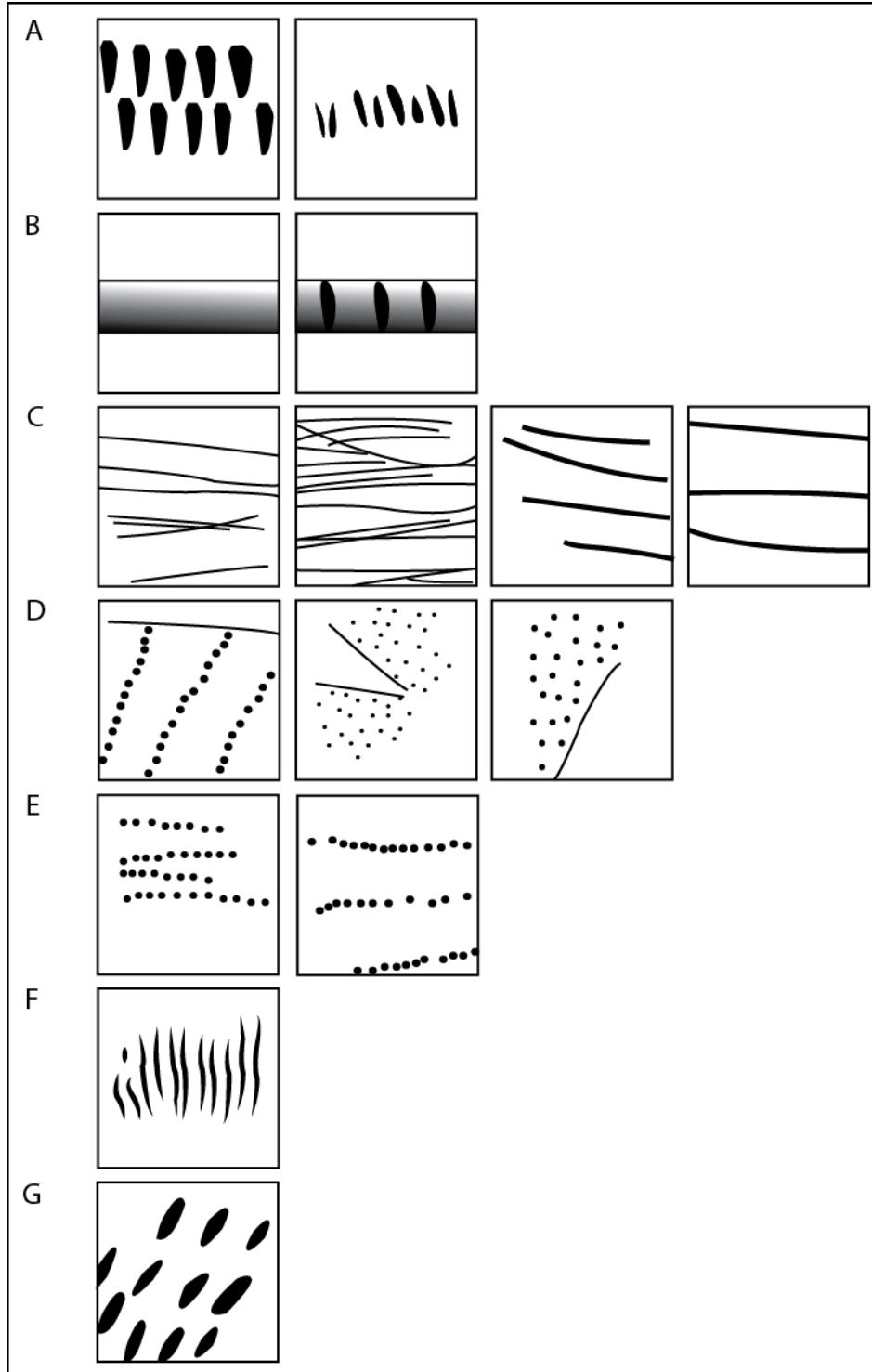
3.1.1. Forma Geral



3.1.2. Tabela de Bordos

Tabela de Tipos de Bordos	Bordo Sem Espessamento		Bordo Com Espessamento						
	Simplex	Adelgaçado	Reforçado			Almendrado		Indiferenciado	
			Internamente	Externamente	Internamente/ Externamente	Internamente	Internamente/ Externamente		
Bordo Direito	1								Lábio Convexo
	2								Lábio Aplanado
Bordo Invertido	3								Lábio Convexo
	4								Lábio Aplanado
Bordo Extrovertido	5								Lábio Convexo
	6								Lábio Aplanado
	a		b	c	d	e	f	g	h

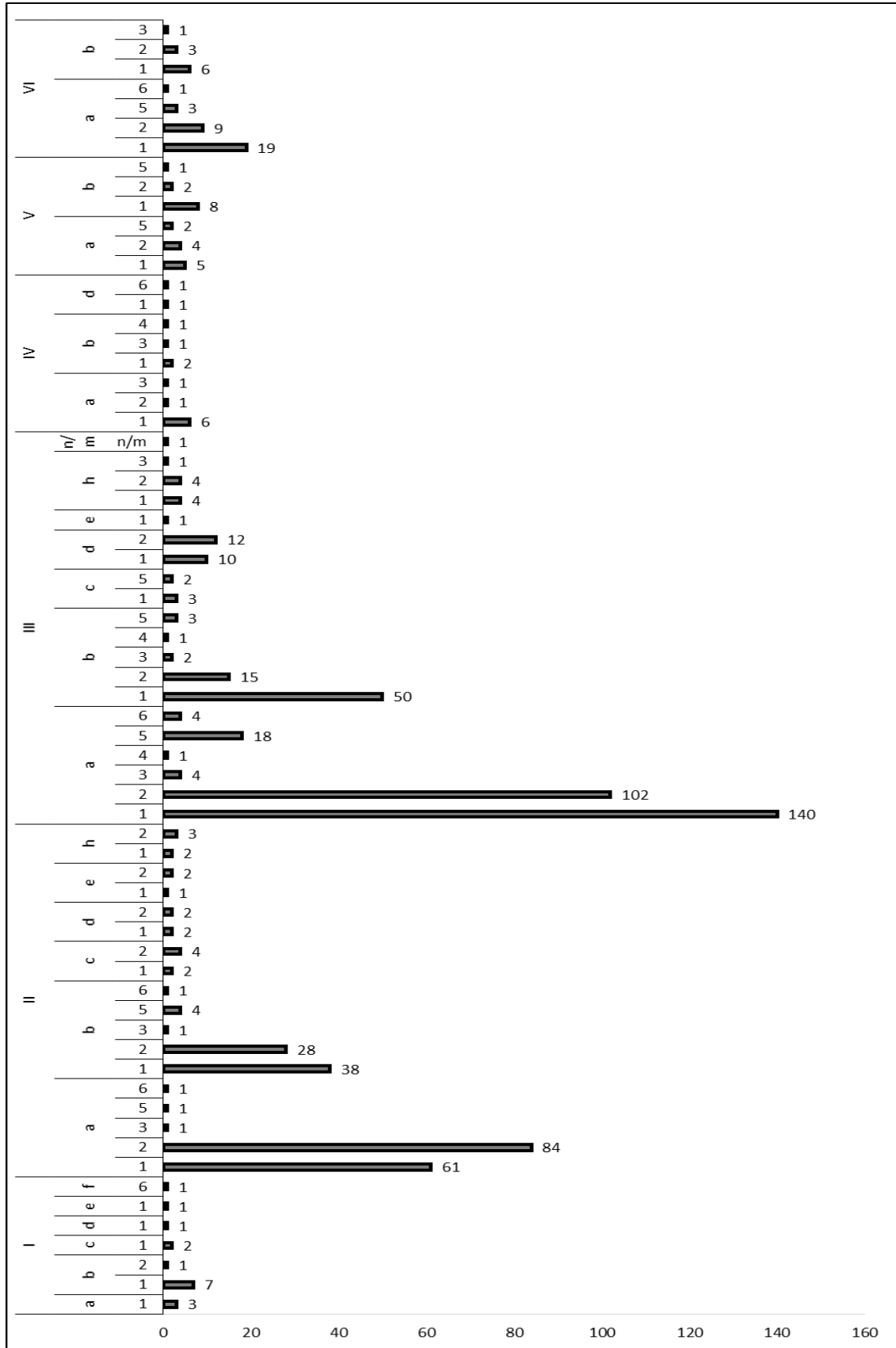
3.1.3. Gramáticas decorativas



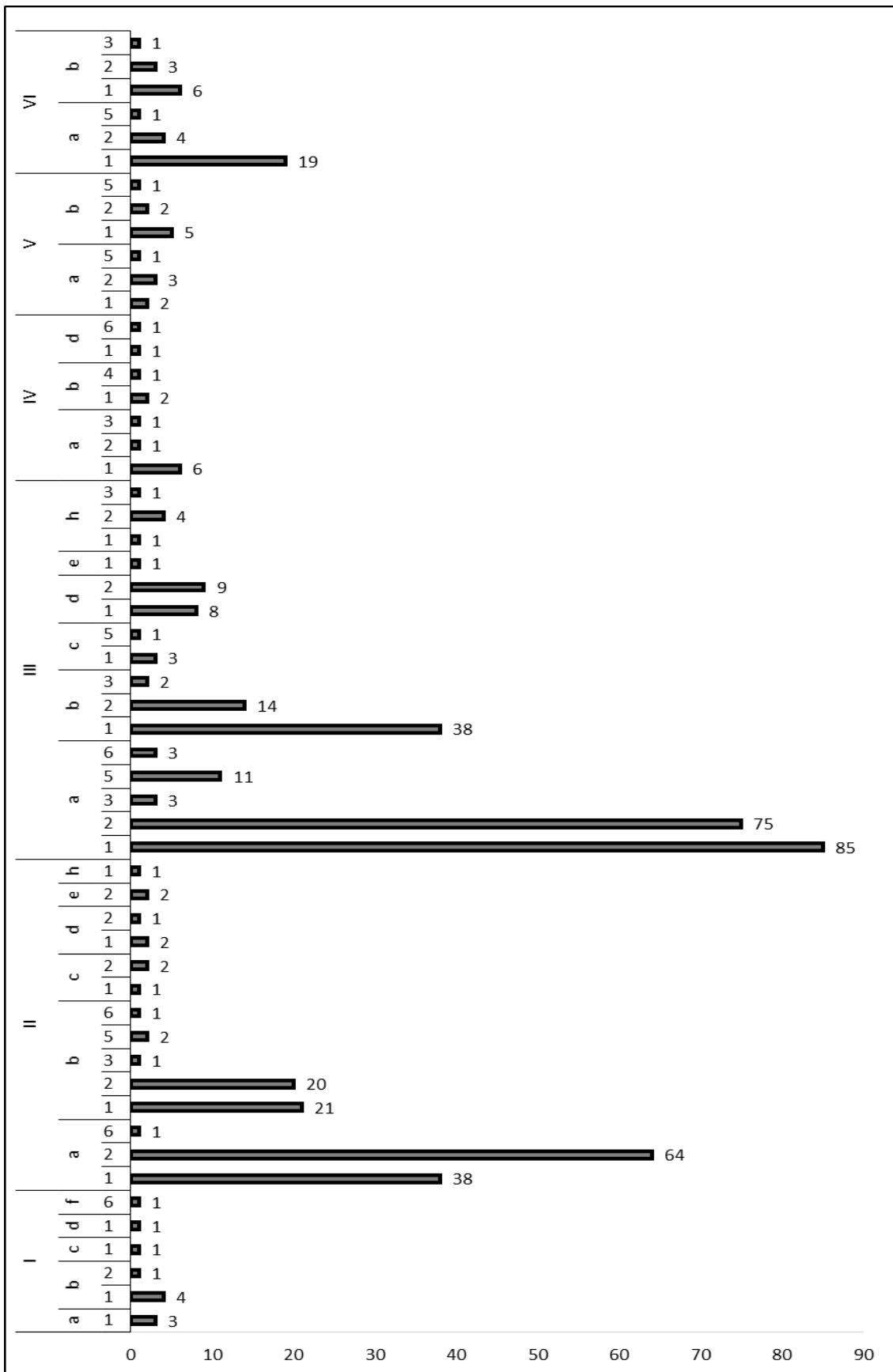
A-Bandas Impressas; B-Cordão Plásticos; C-Linhas Incisas; D-Simbólica; E-Pontilhado; F-Penteada; G-Ungulada

3.2. Formas Por Ponto

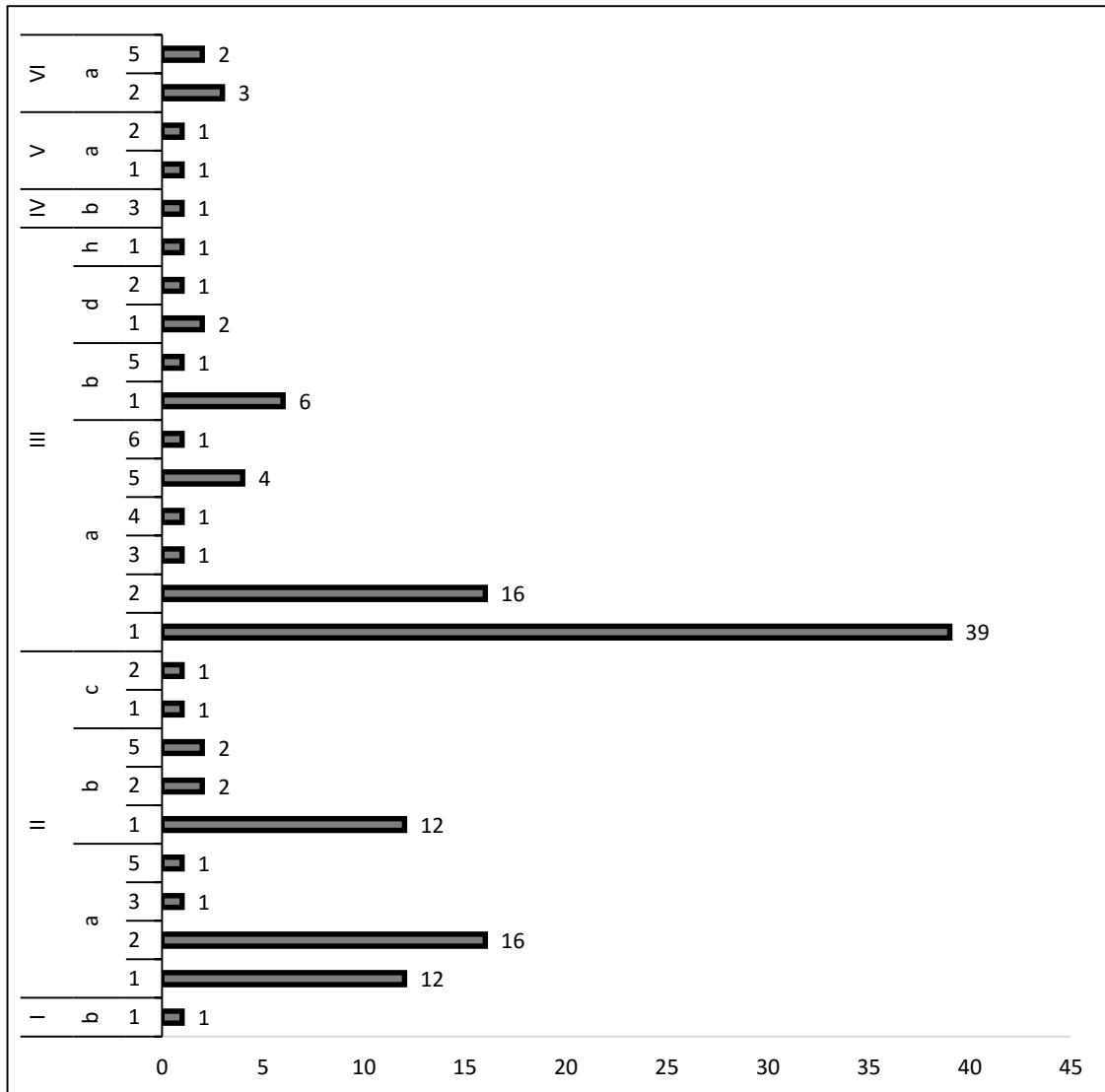
3.2.1 Conjunto Geral



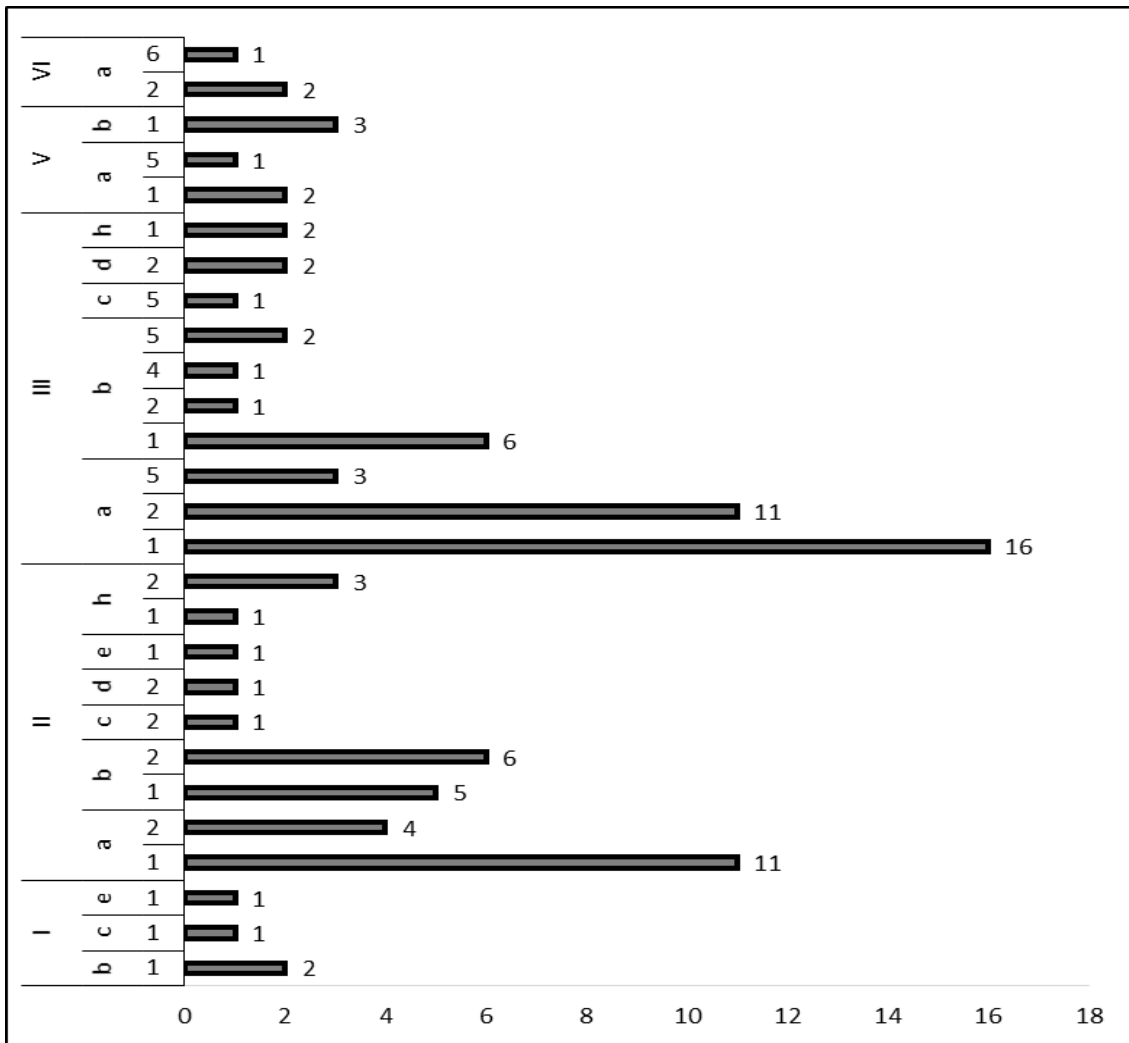
3.2.2 Fosso 1 (Ponto B)



3.2.3. Fosso 3 (Ponto C)



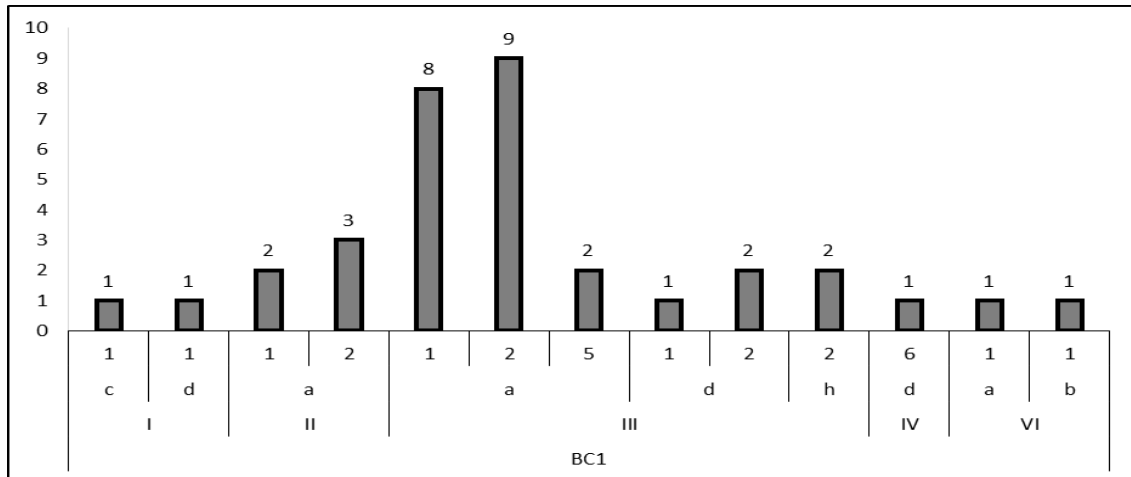
3.2.4. Superfície



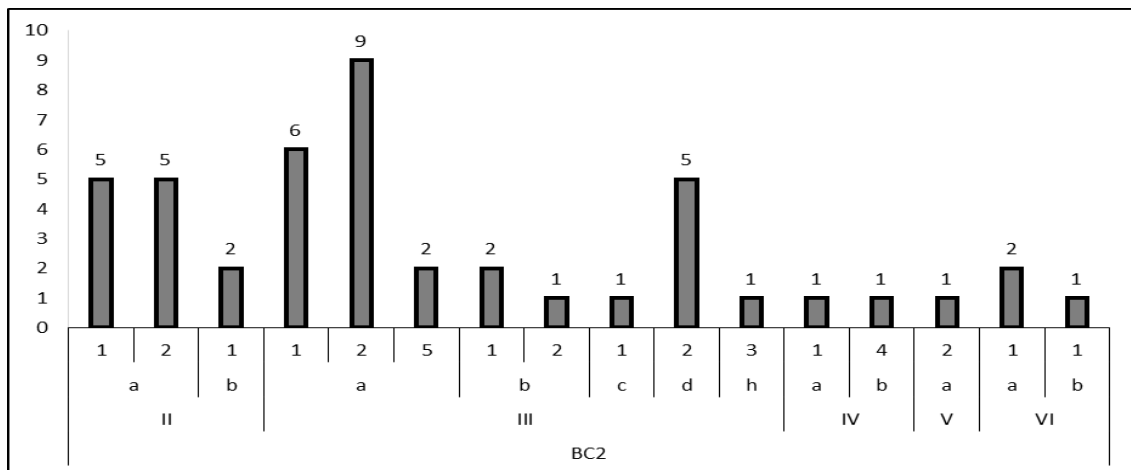
3.3. Formas Por Camada

2.4.1. Fosso 1 (Ponto B)

Camada 1

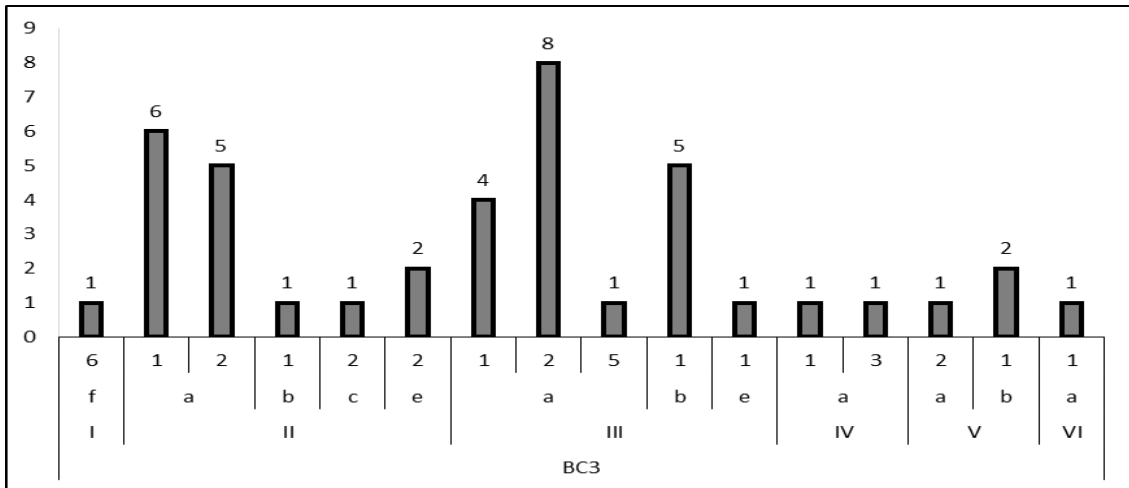


Camada 2

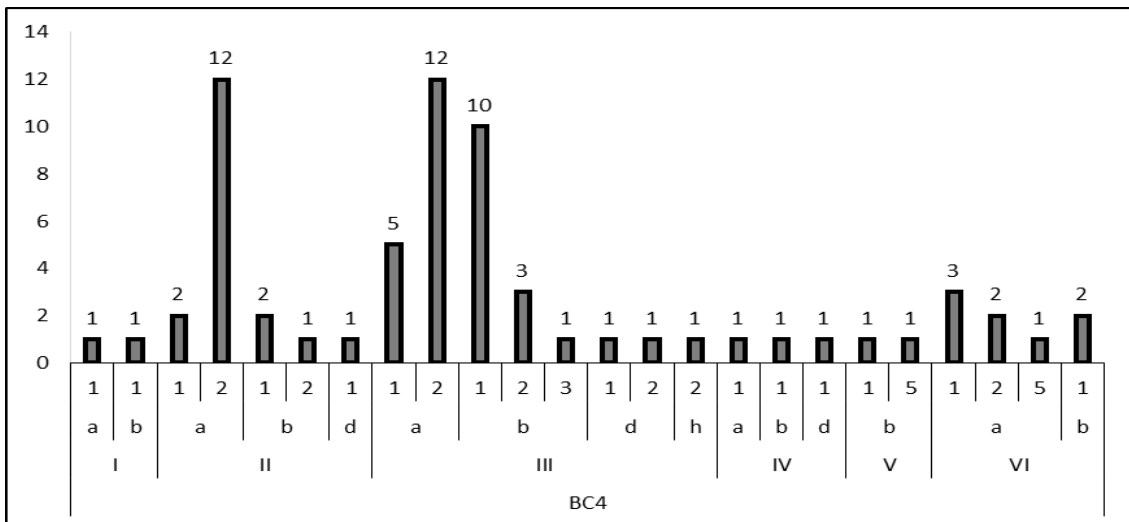


Camada 3

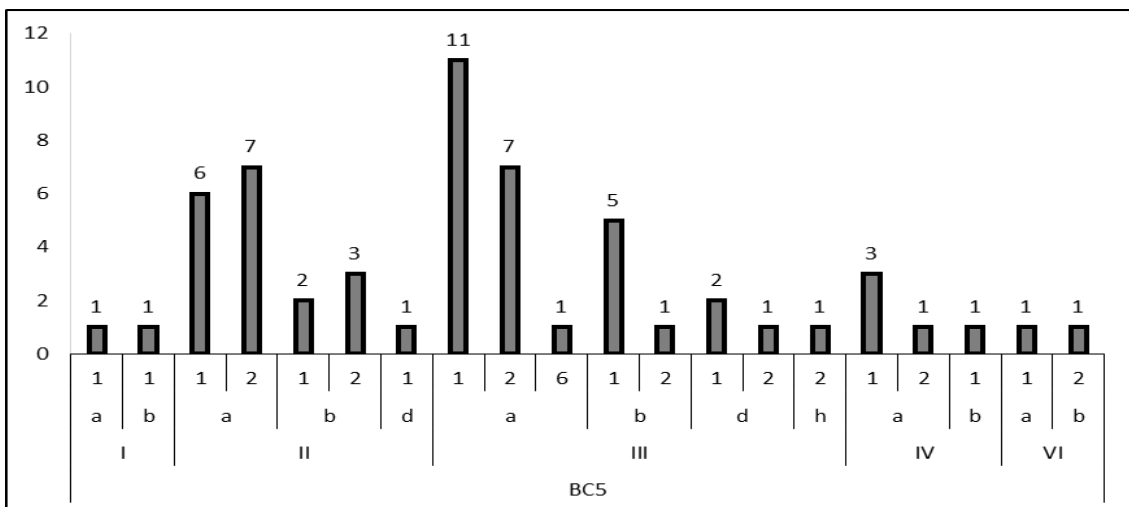
Moreiros 2 (Arronches): As leituras possíveis dos fossos interiores. Anexos



Camada 4

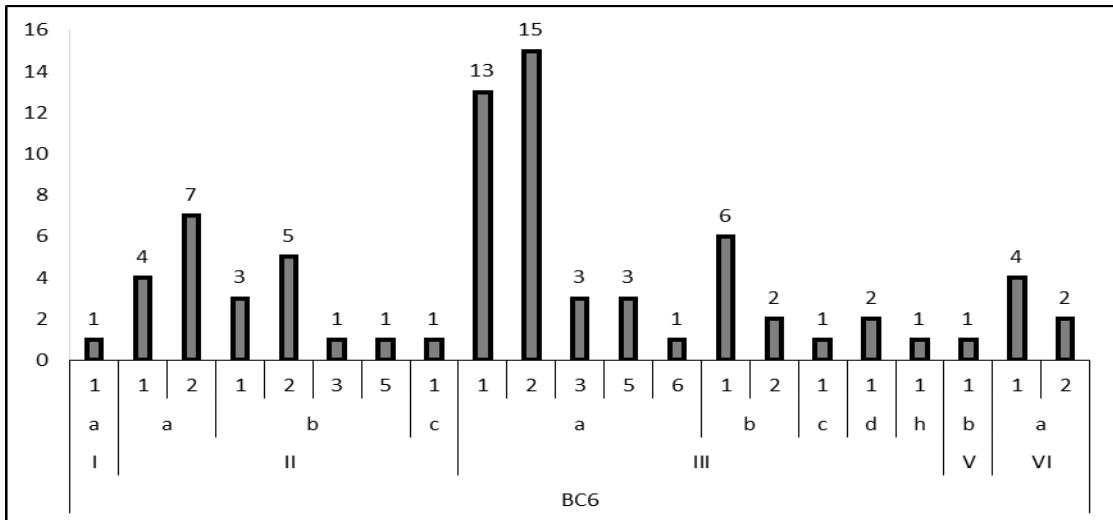


Camada 5

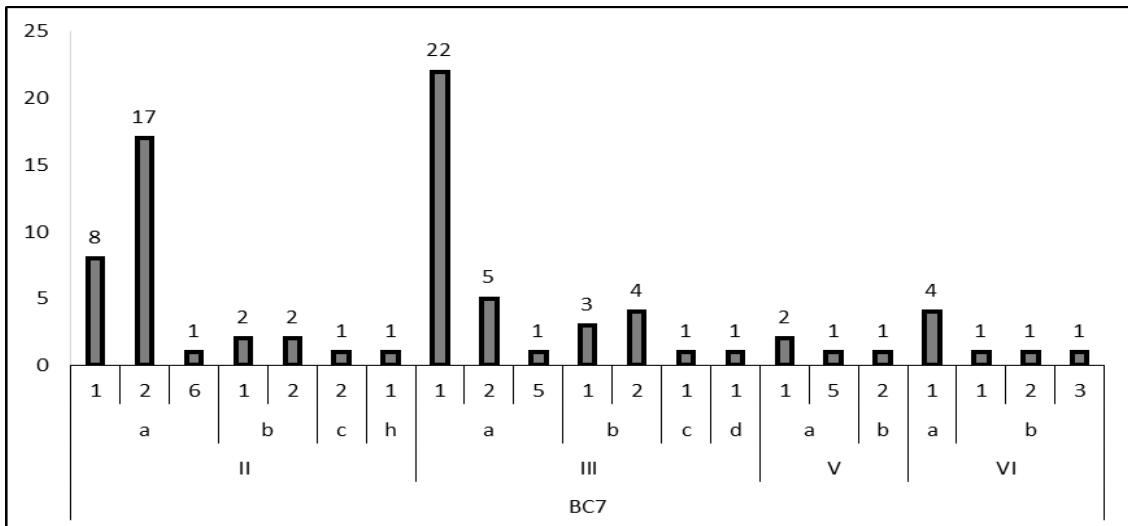


Camada 6

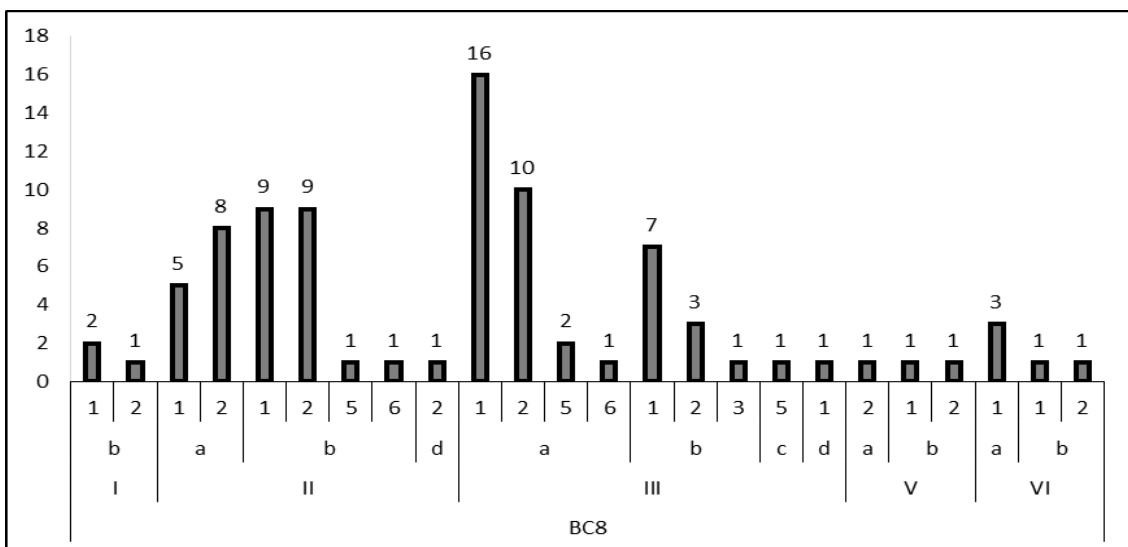
Moreiros 2 (Arronches): As leituras possíveis dos fossos interiores. Anexos



Camada 7

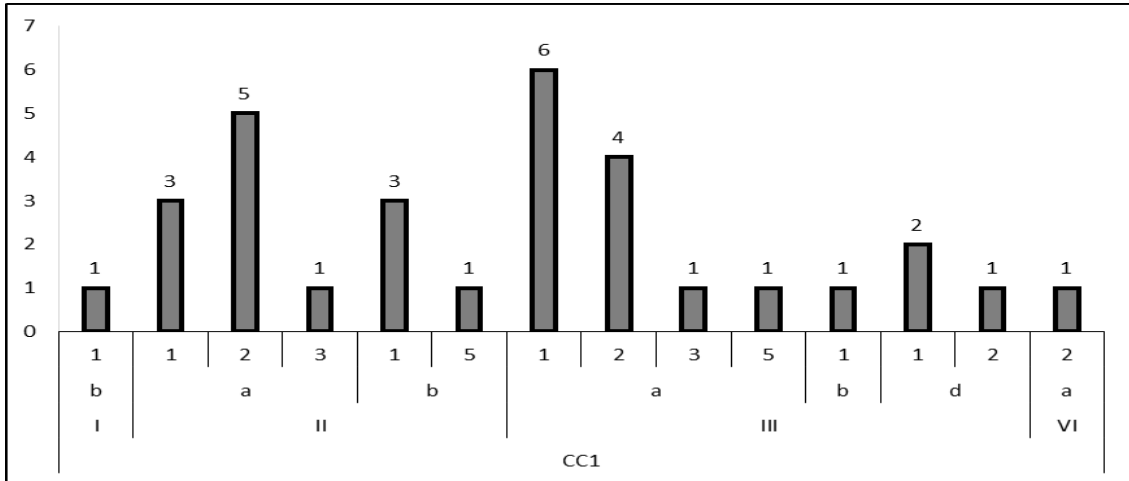


Camada 8

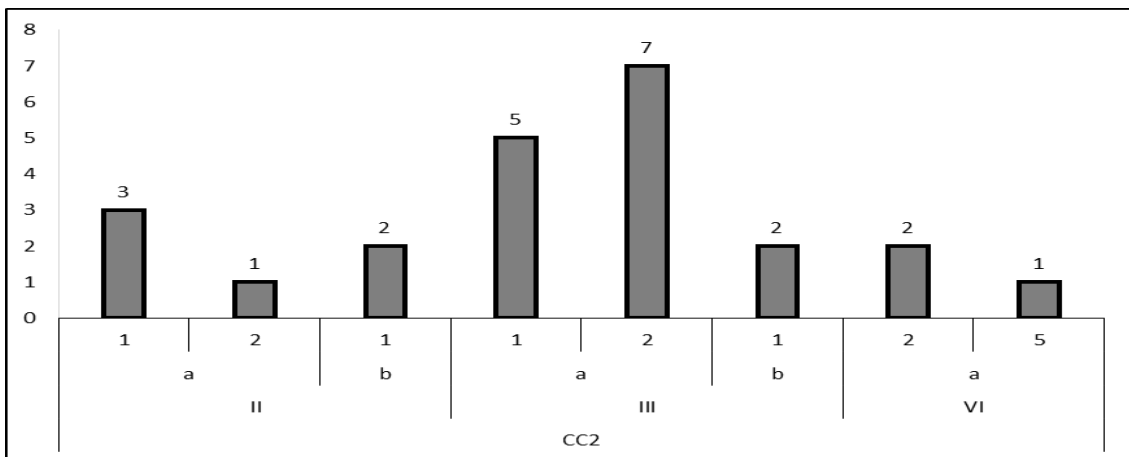


2.4.2. Fosso 3 (Ponto C)

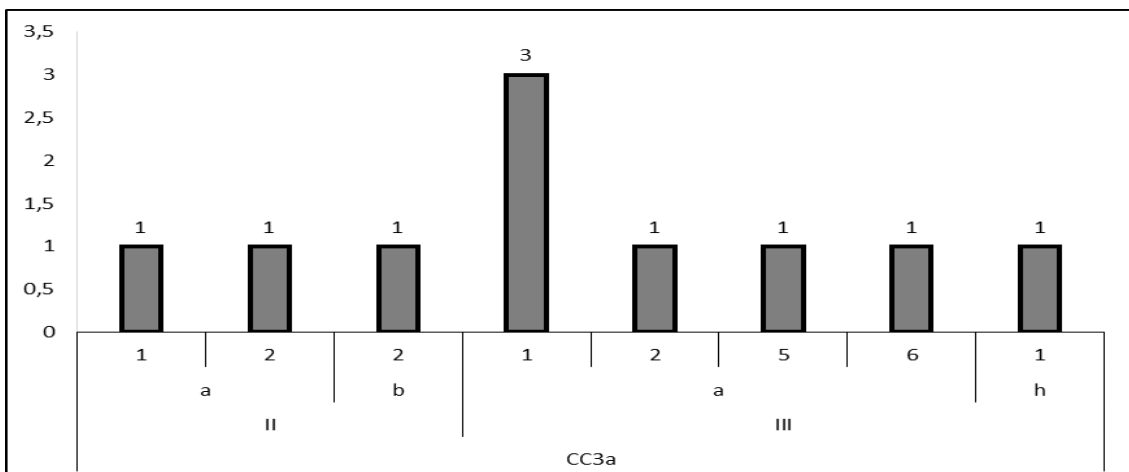
Camada 1



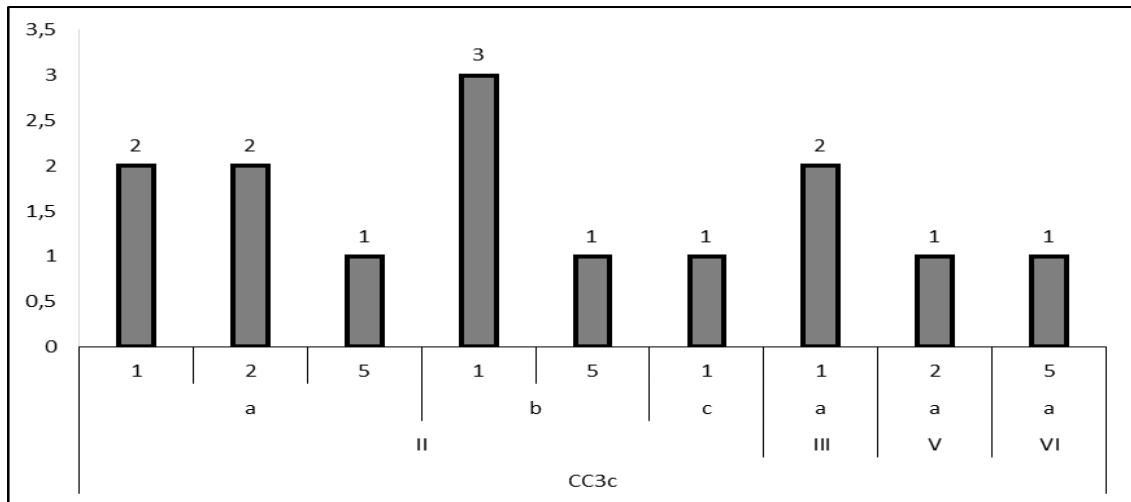
Camada 2



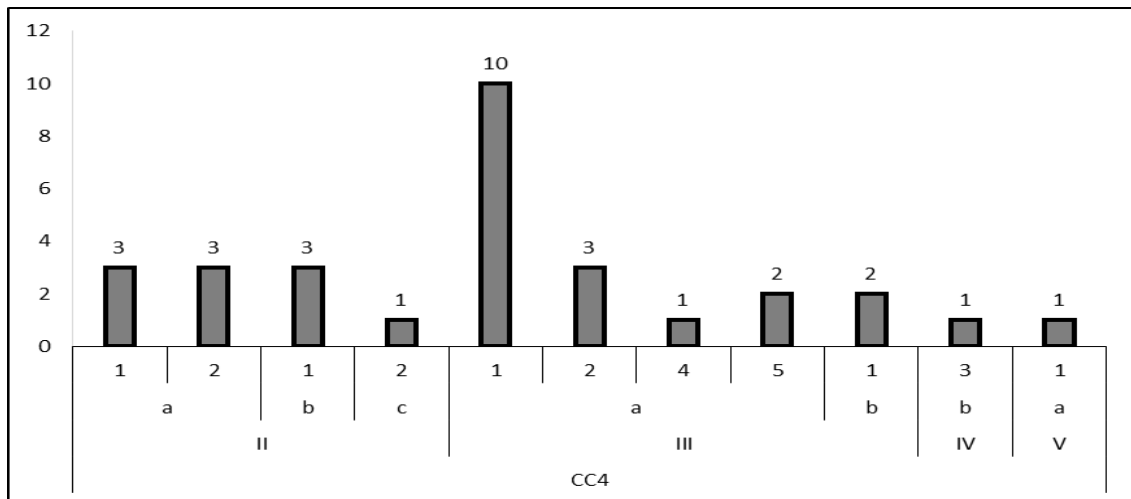
Camada 3a



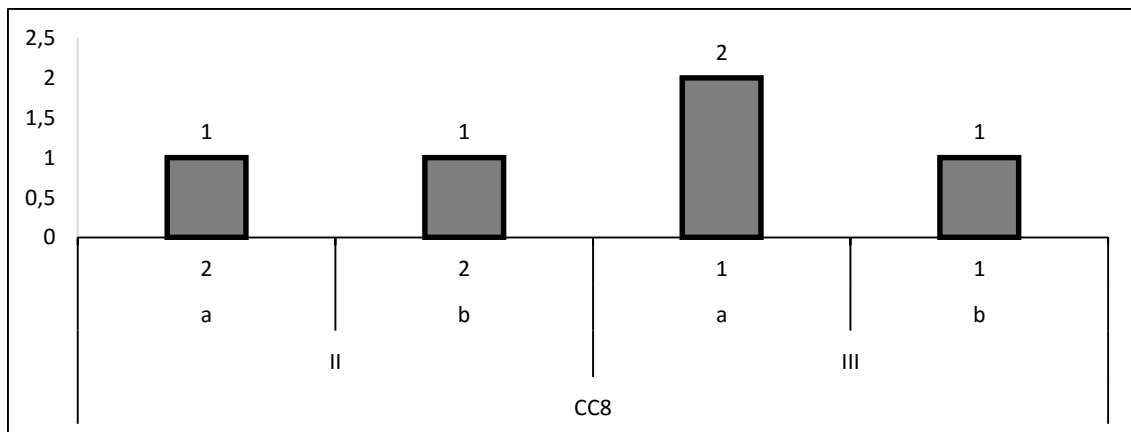
Camada 3c



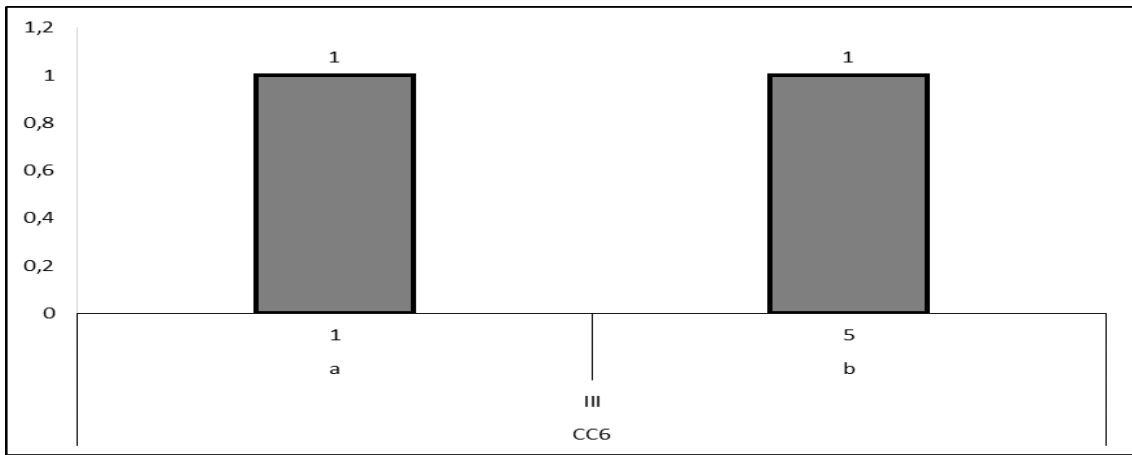
Camada 4



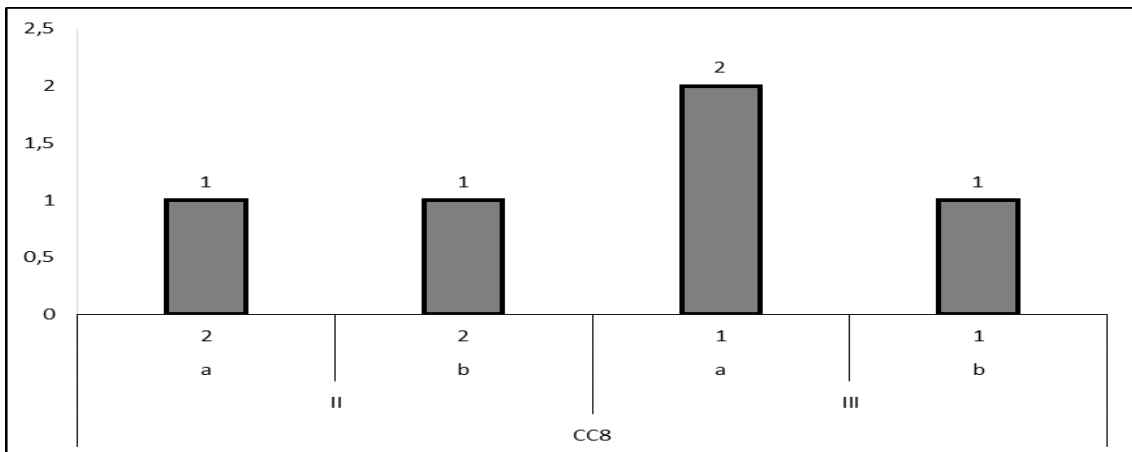
Camada 5



Camada 6



Camada 8



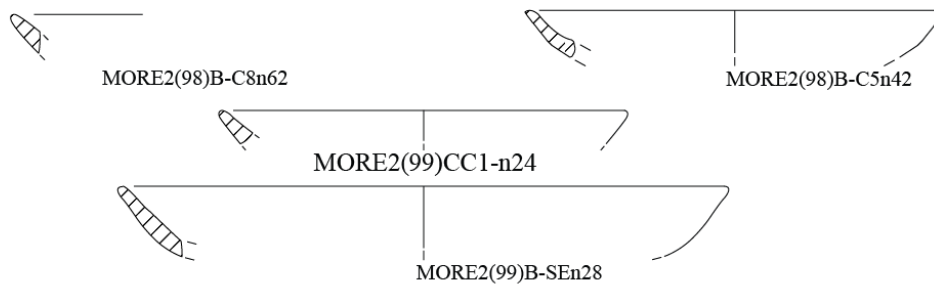
3. Anexo IV – Estampas

4.1. Forma 1 (Pratos)

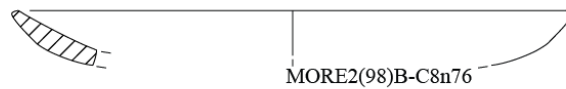
Forma I.a.1



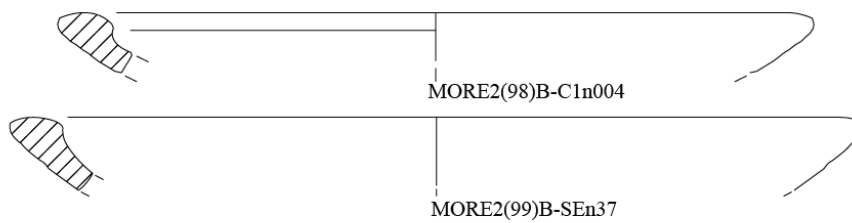
Forma I.b.1



Forma I.b.2



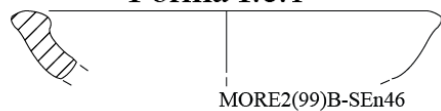
Forma I.c.1



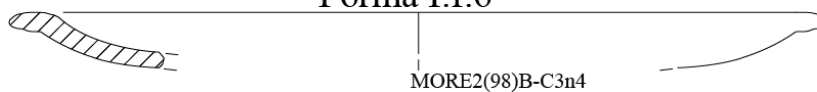
Forma I.d.1



Forma I.e.1



Forma I.f.6



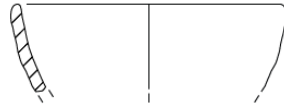
0  4cm

4.2. Forma II (Taças)

Forma II.a.1



MORE2(98)B-C2n26



MORE2(98)B-C2n36



MORE2(98)B-C4n70



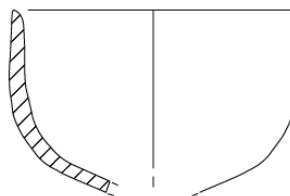
MORE2(98)B-C5n19



MORE2(98)B-C7n2



MORE2(98)B-C7n110



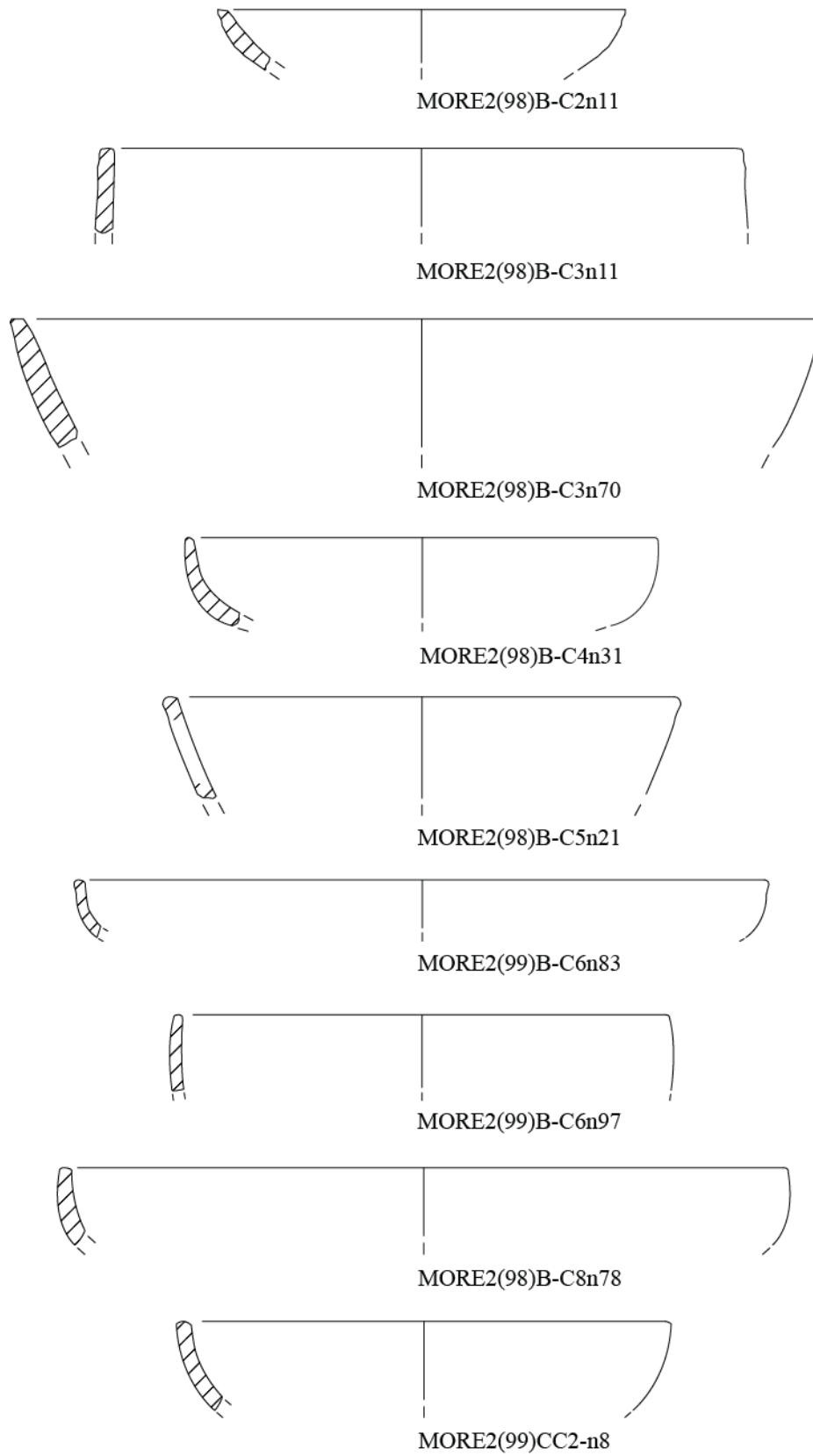
MORE2(99)CC2-n2



MORE2(99)CC3A-n7

0  4cm

Forma II.a.2



Forma II.a.3



MORE2(99)CC1-n15

Forma II.a.5



MORE2(99)CC3C-n14

Forma II.a.6



MORE2(98)B-C7n58

Forma II.b.1



MORE2(98)B-C2n49



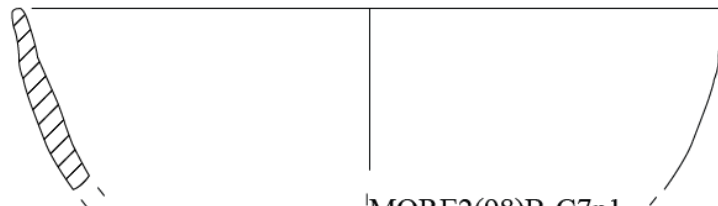
MORE2(98)B-C4n98



MORE2(98)B-C5n94



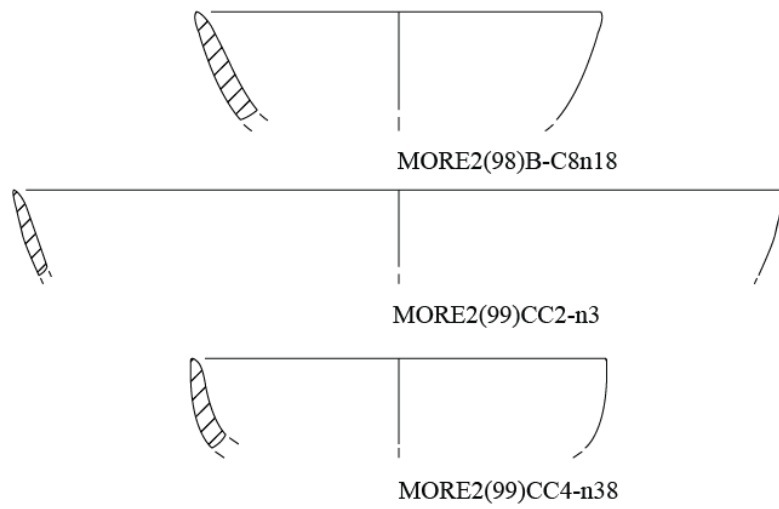
MORE2(99)B-C6n30



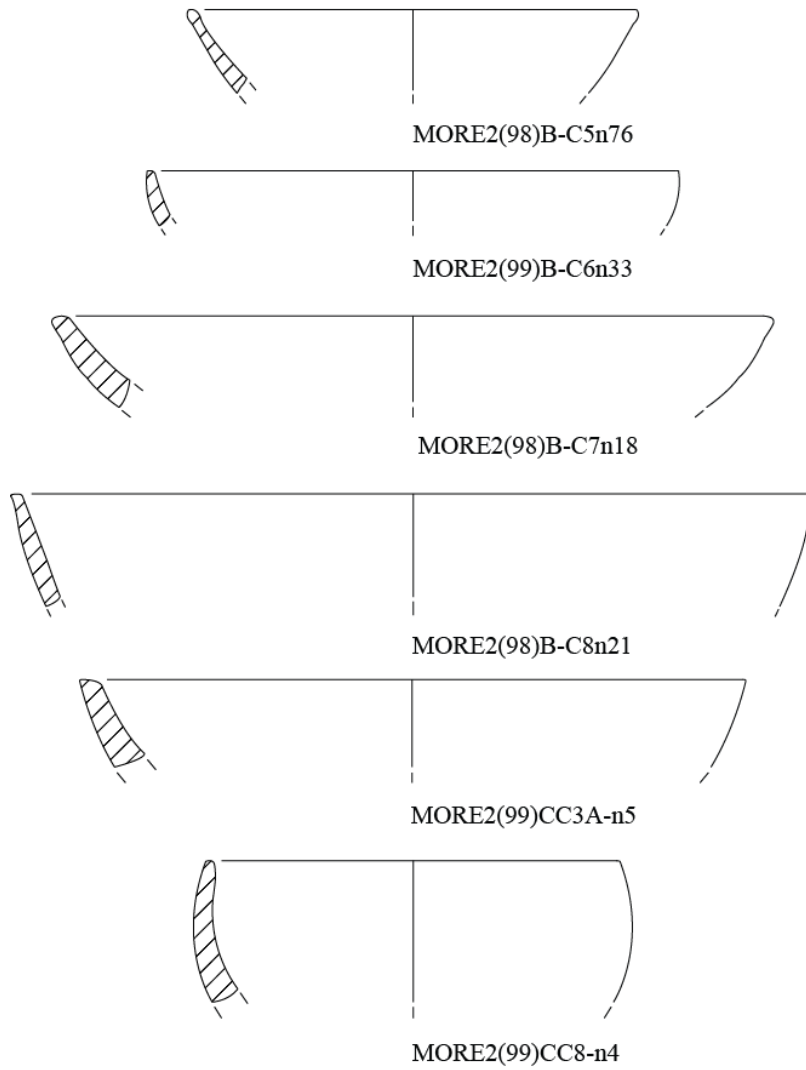
MORE2(98)B-C7n1

0  4cm

Forma II.b.1



Forma II.b.2

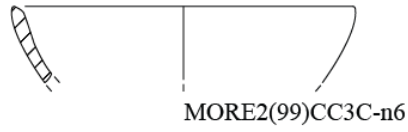
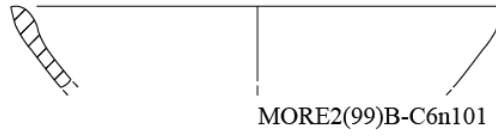


0  4cm

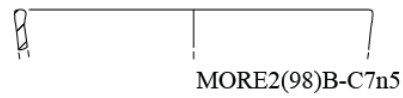
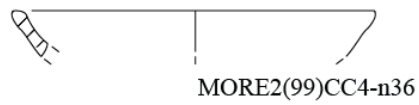
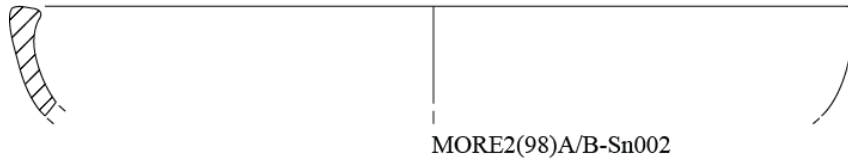
Forma II.b.6



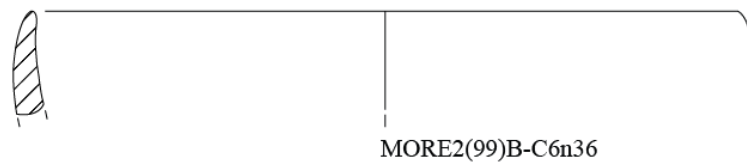
Forma II.c.1



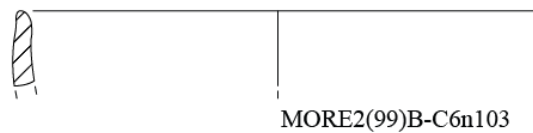
Forma II.c.2



Forma II.b.3



Forma II.b.5



0  4cm

Forma II.d.1



MORE2(98)B-C5n72

Forma II.e.1



MORE2(99)B-SEn38

Forma II.e.2



MORE2(98)B-C3n1



MORE2(98)B-C3n3

Forma II.h.1

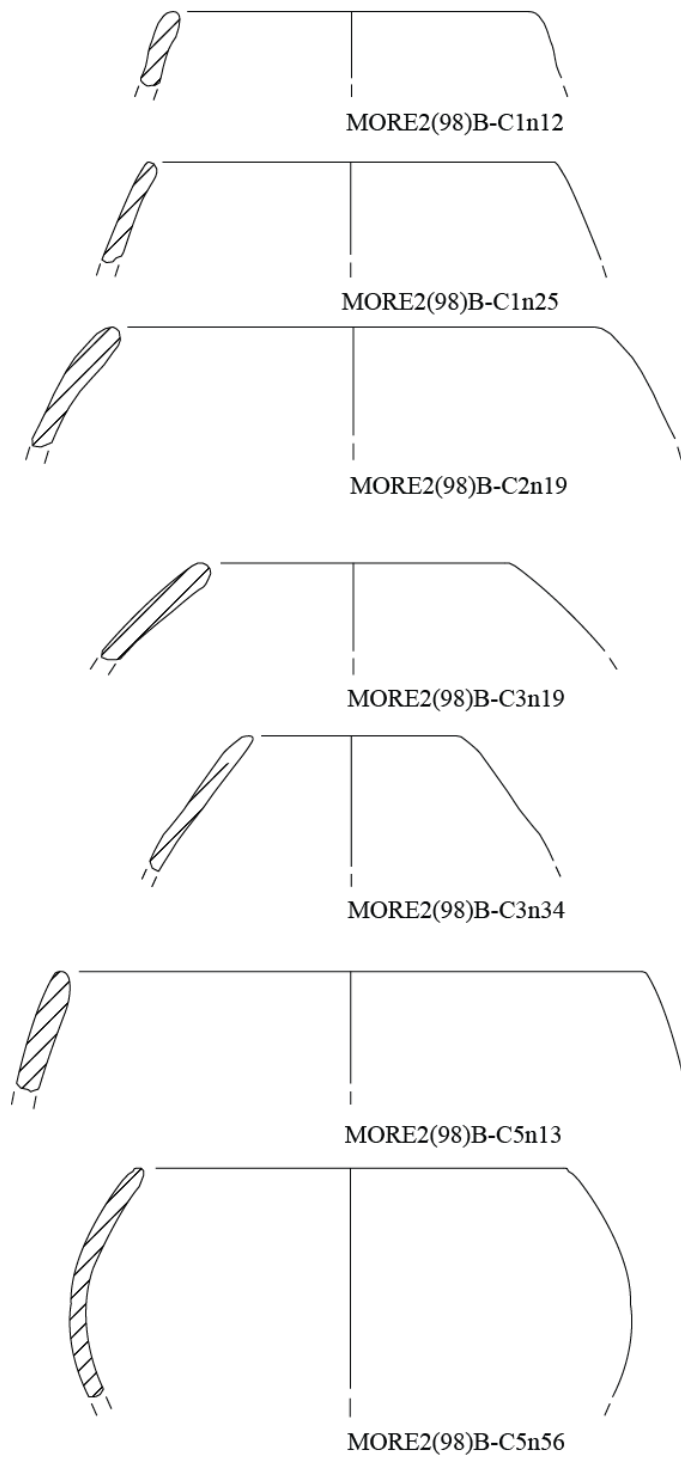


MORE2(98)B-C7n73

0  4cm

4.3. Forma III (Vasos)

Forma III.a.1



0  4cm

Forma III.a.1



MORE2(99)B-C6n38



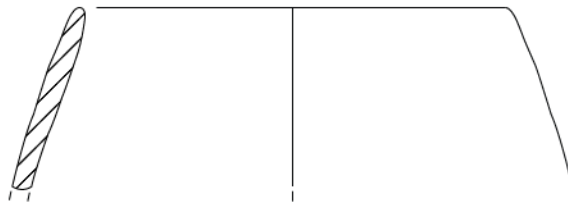
MORE2(99)CC1-n18



MORE2(99)CC1-n29



MORE2(99)CC2-n15



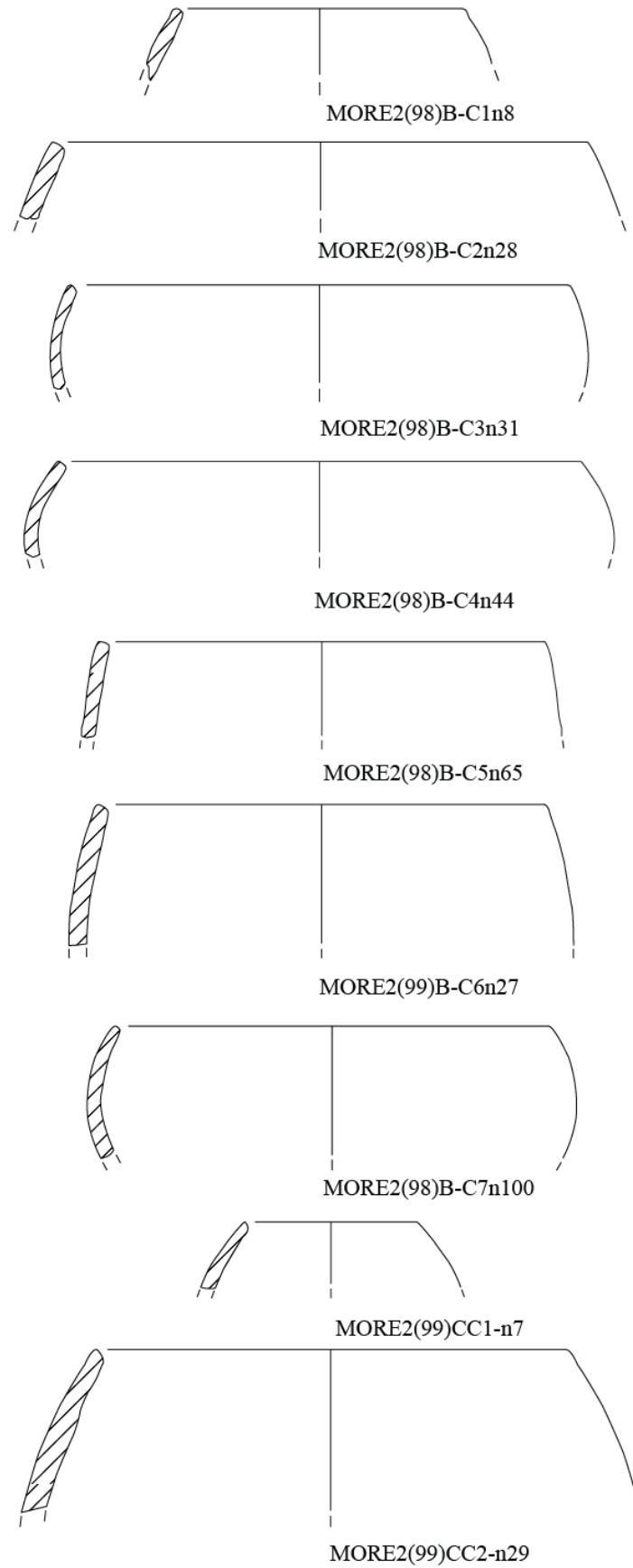
MORE2(99)CC3A-n1



MORE2(99)CC4-n4

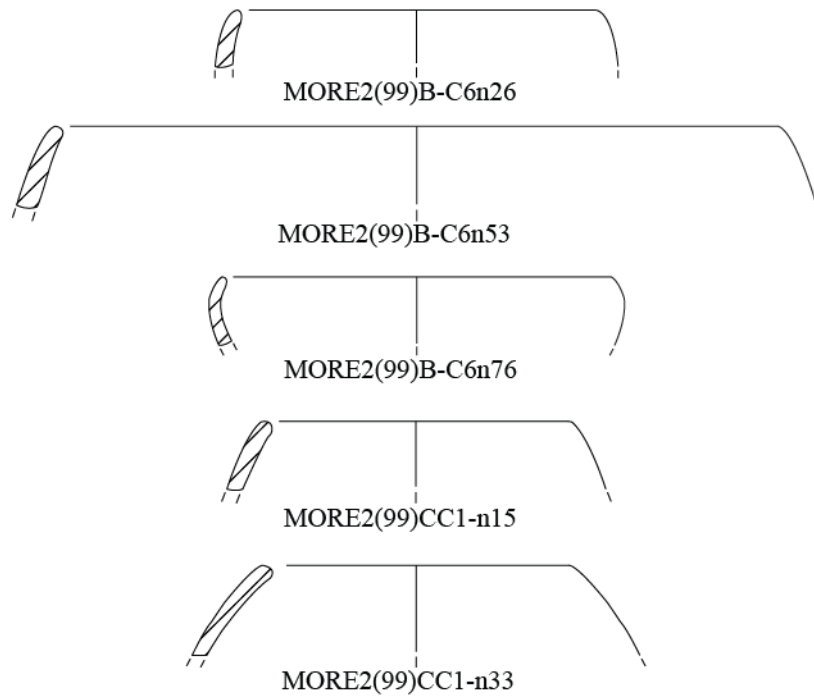
0  4cm

Forma III.a.2

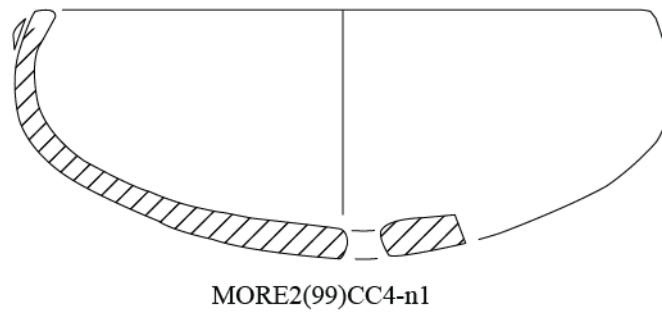


0  4cm

Forma III.a.3

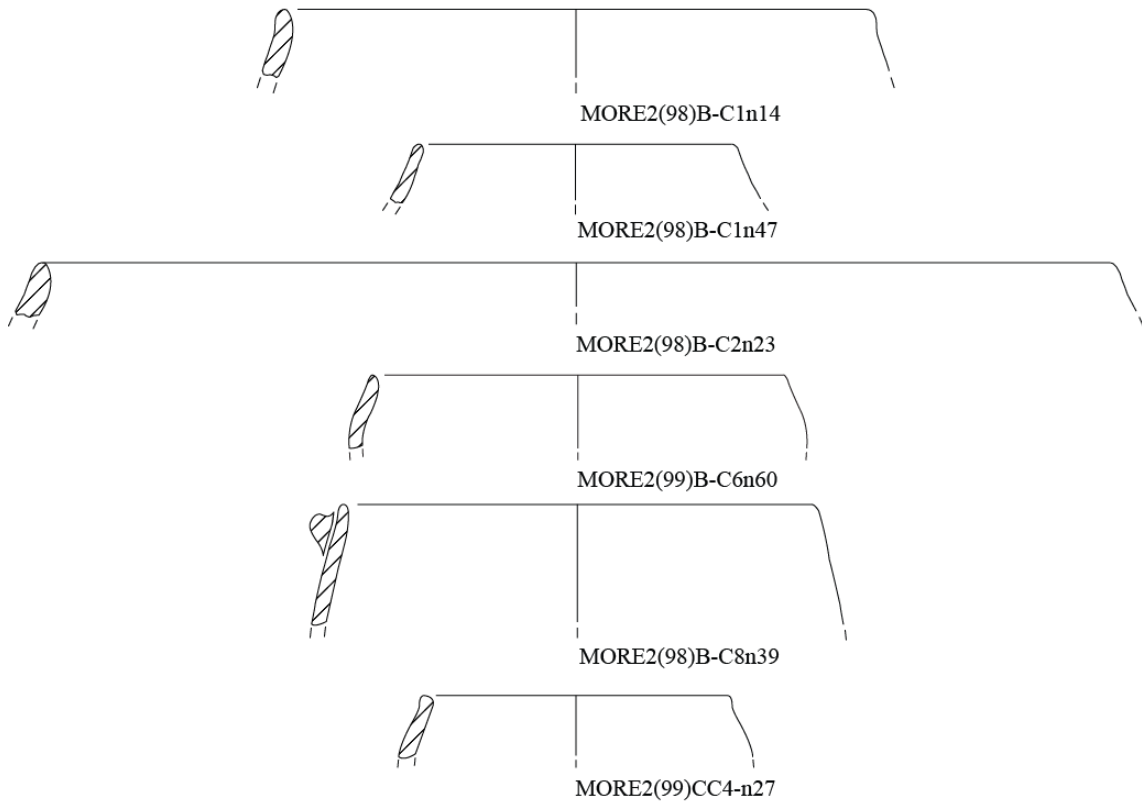


Forma III.a.4

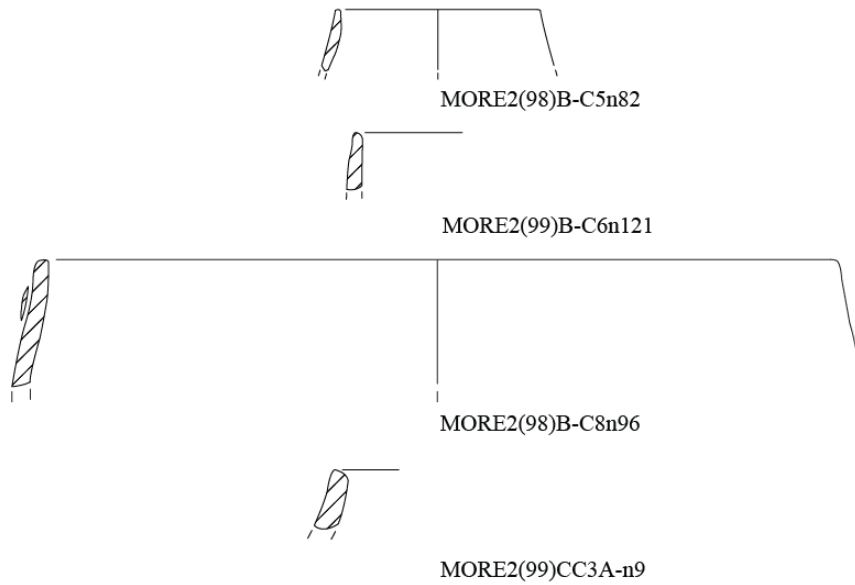


0  4cm

Forma III.a.5

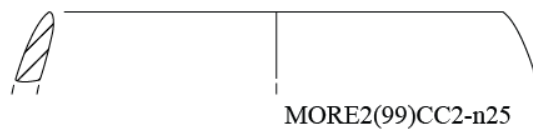
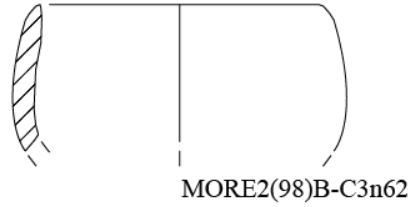
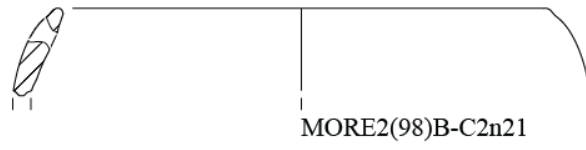


Forma III.a.6



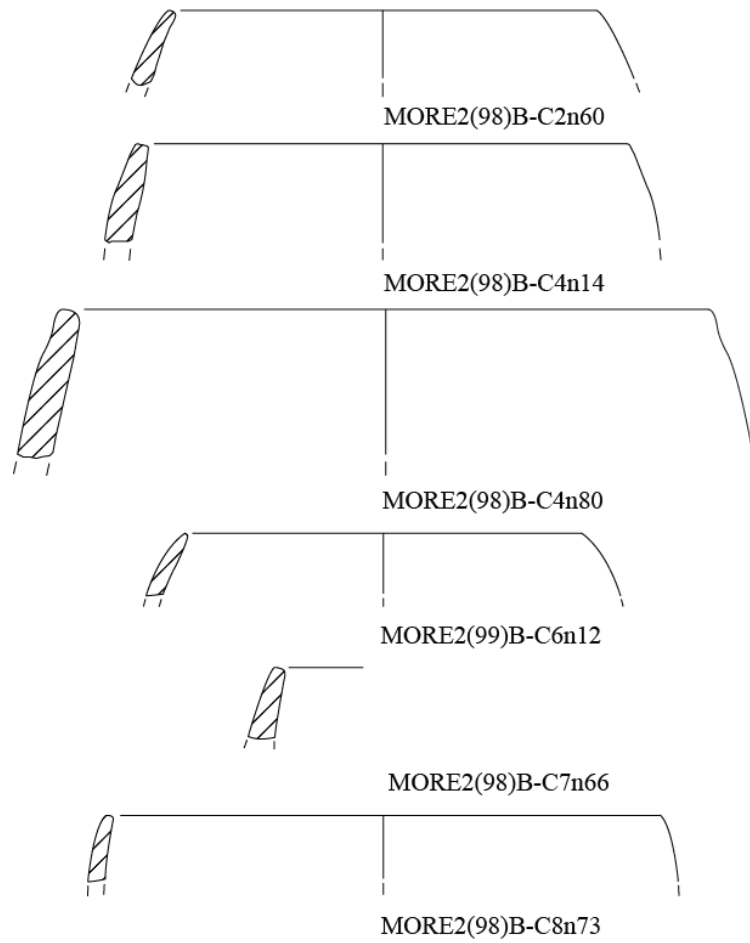
0  4cm

Forma III.b.1



0  4cm

Forma III.b.2



Forma III.b.3

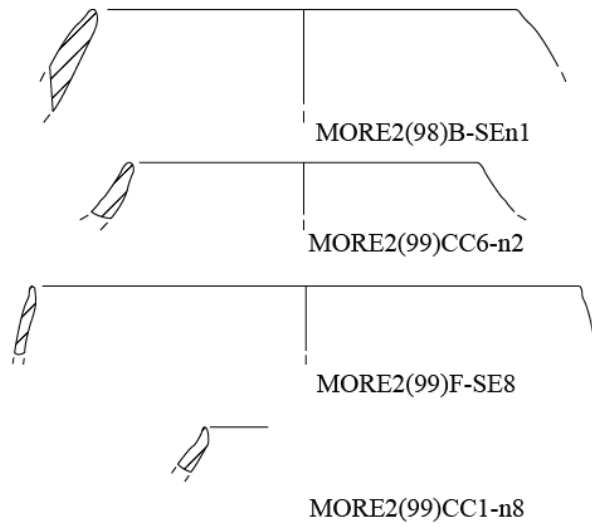


Forma III.b.4

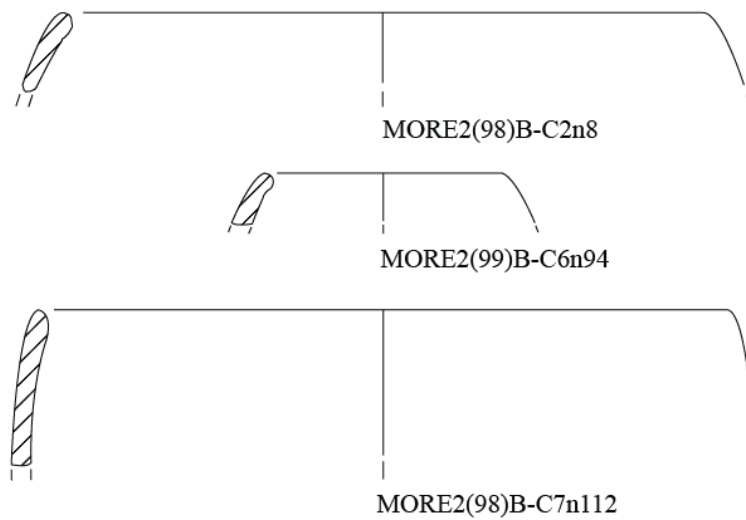


0  4cm

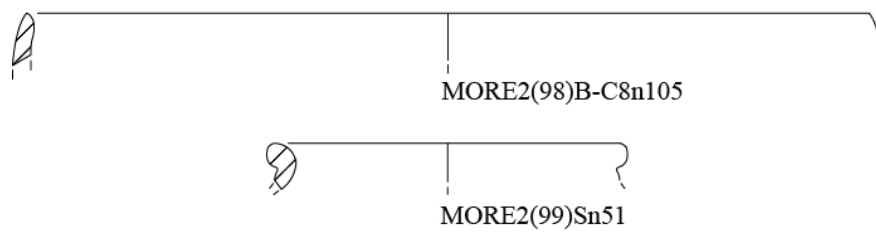
Forma III.b.5



Forma III.c.1

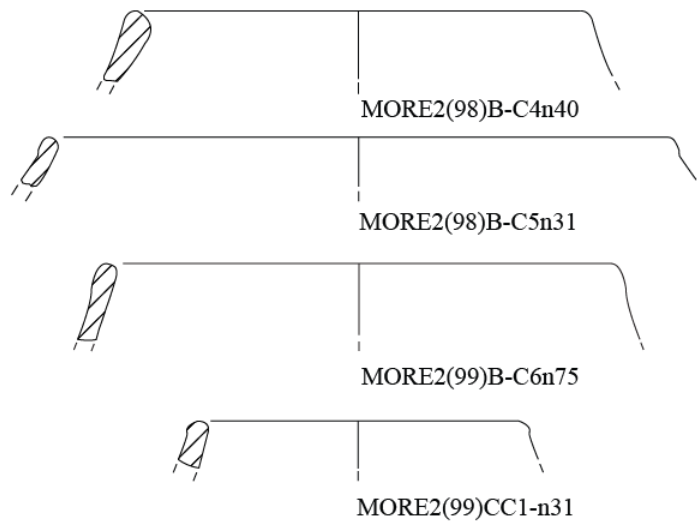


Forma III.c.5



0  4cm

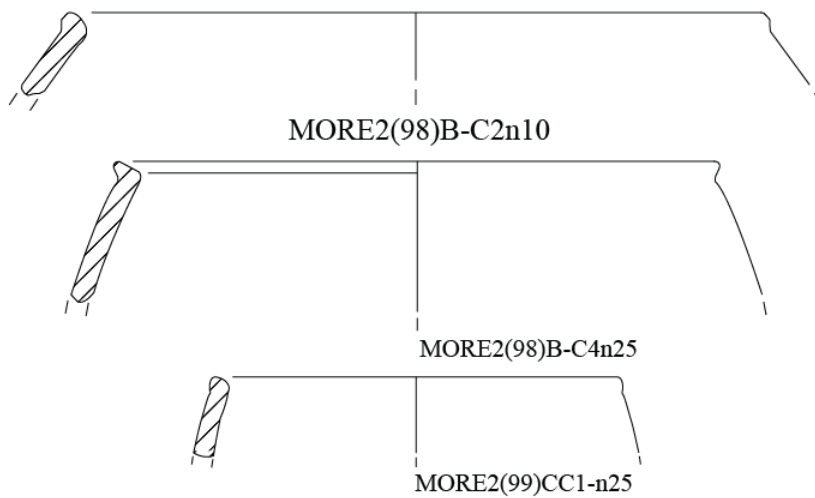
Forma III.d.1



Forma III.d.2

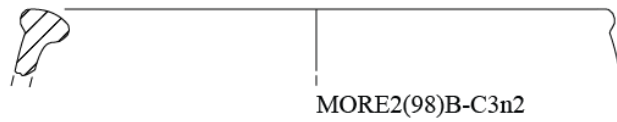


Forma III.d.2

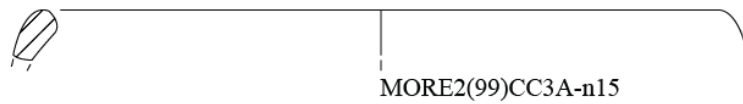


0 4cm

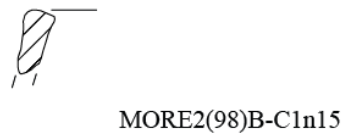
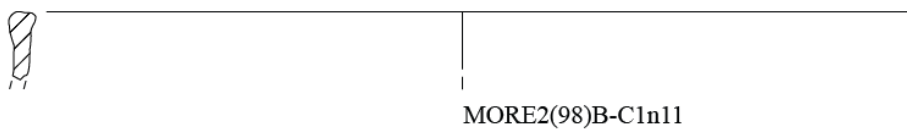
Forma III.e.1



Forma III.f.1

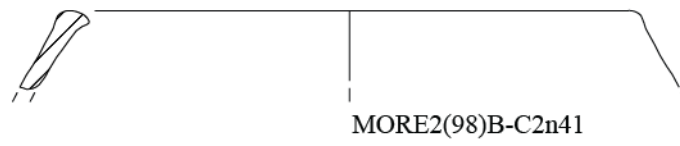


Forma III.f.2

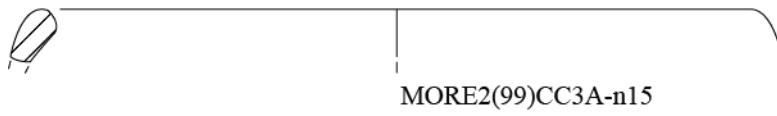


0  4cm

Forma III.f.3



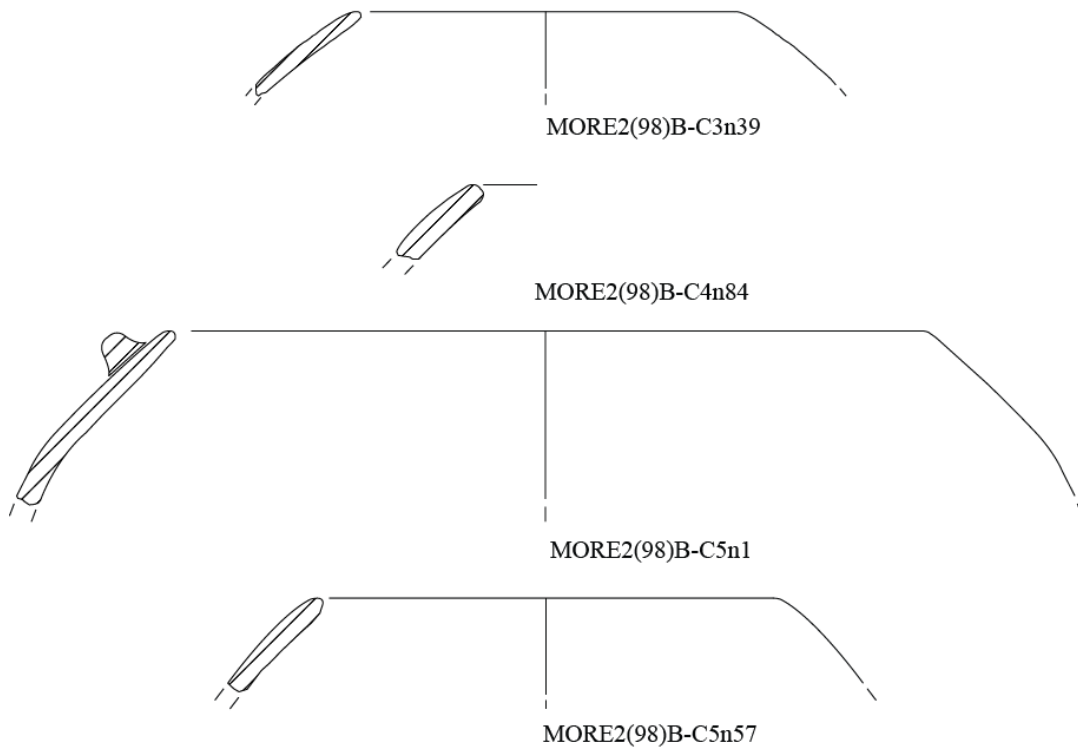
Forma III.h.1



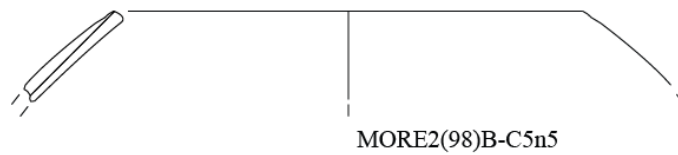
0  4cm

4.4. Forma IV (Potes)

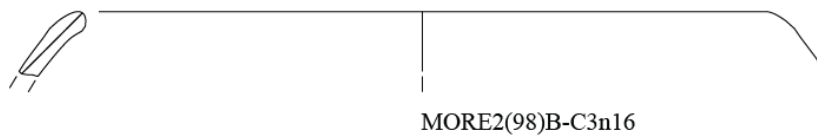
Forma IV.a.1



Forma IV.a.2

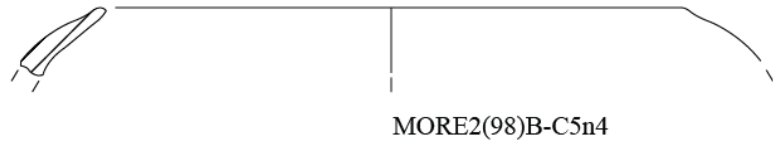


Forma IV.a.3

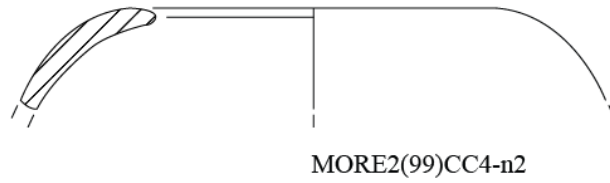


0  4cm

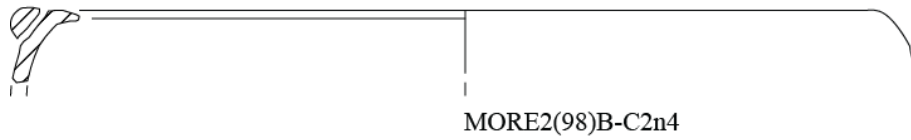
Forma IV.b.1



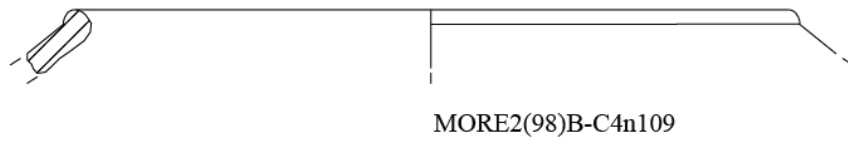
Forma IV.b.3



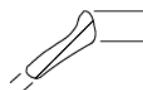
Forma IV.b.4



Forma IV.d.1



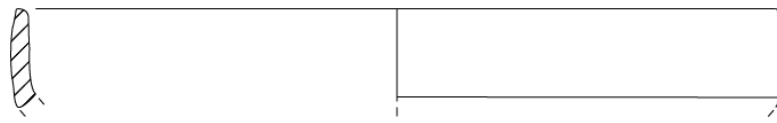
Forma IV.d.6



0  4cm

4.5. Forma V (Carenadas Abertas)

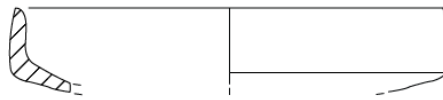
Forma V.a.1



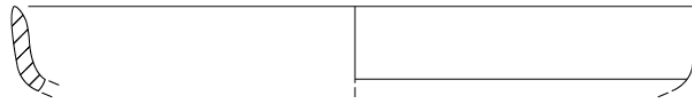
MORE2(98)B-C7n9



MORE2(98)F-Sn3

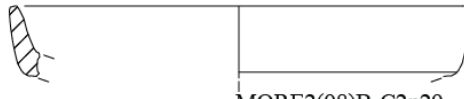


MORE2(99)CC4-n25

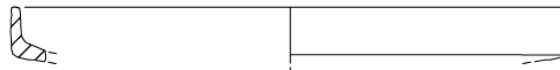


MORE2(99)D-SEn1

Forma V.a.2



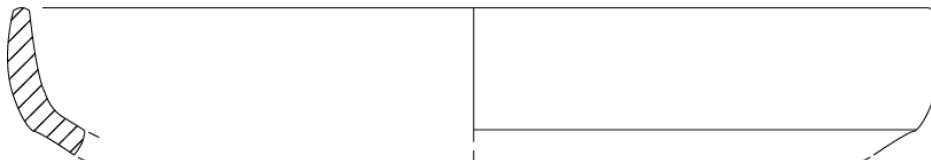
MORE2(98)B-C2n29



MORE2(98)B-C3n22



MORE2(98)B-C8n15



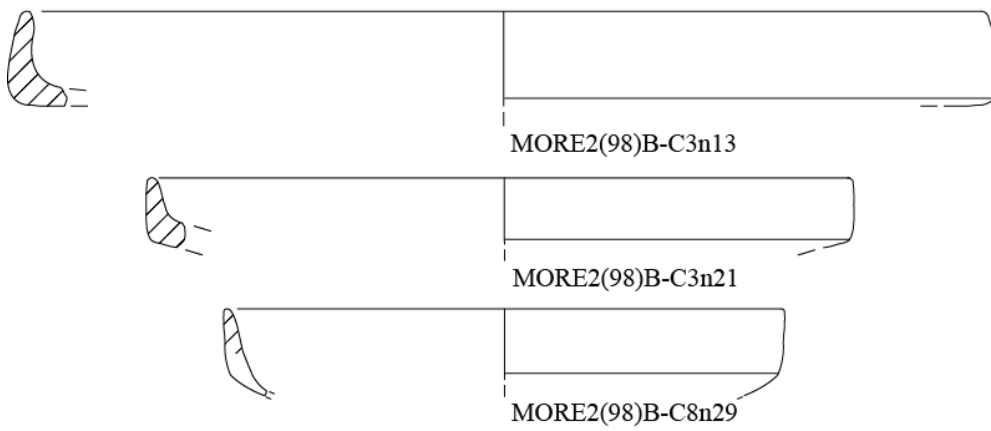
MORE2(99)CC3C-n16

0  4cm

Forma V.a.5



Forma V.b.1



Forma V.b.2



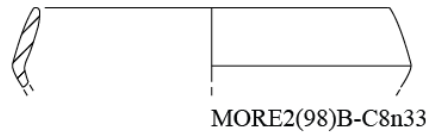
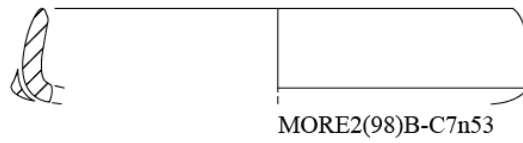
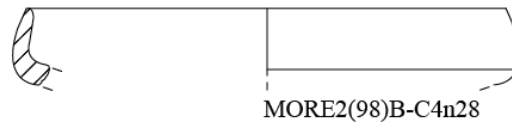
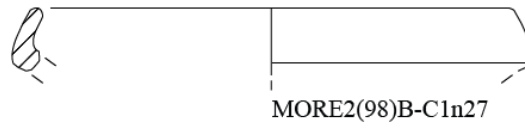
Forma V.b.5



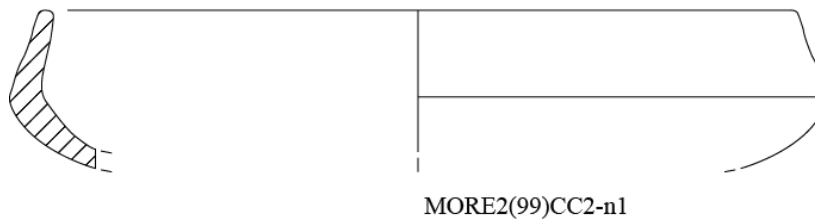
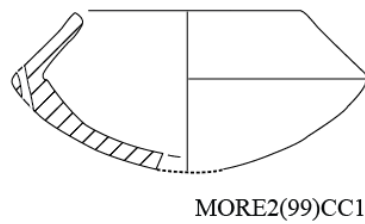
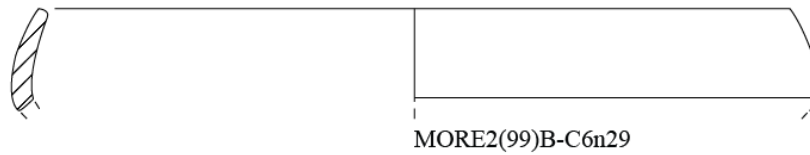
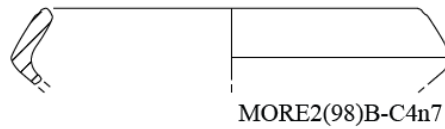
0  4cm

4.6. Forma VI (Carenadas Fechadas)

Forma VI.a.1

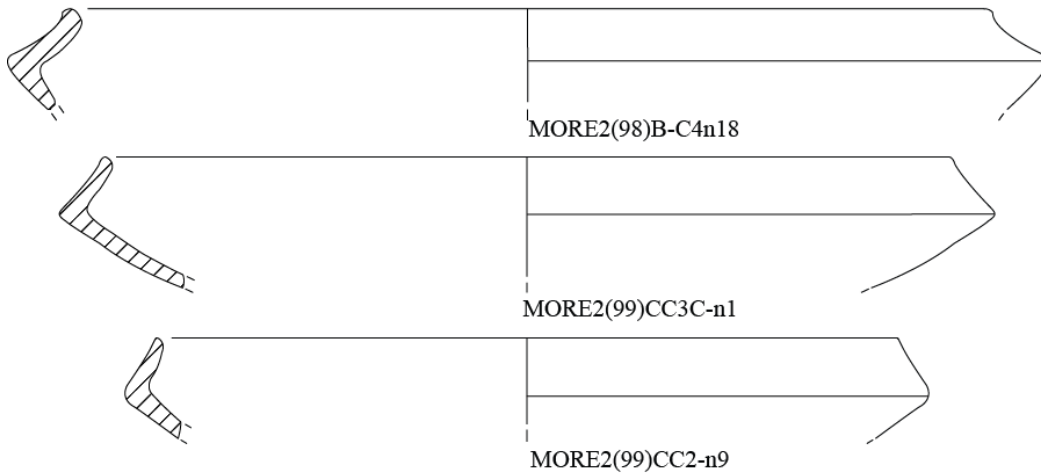


Forma VI.a.2

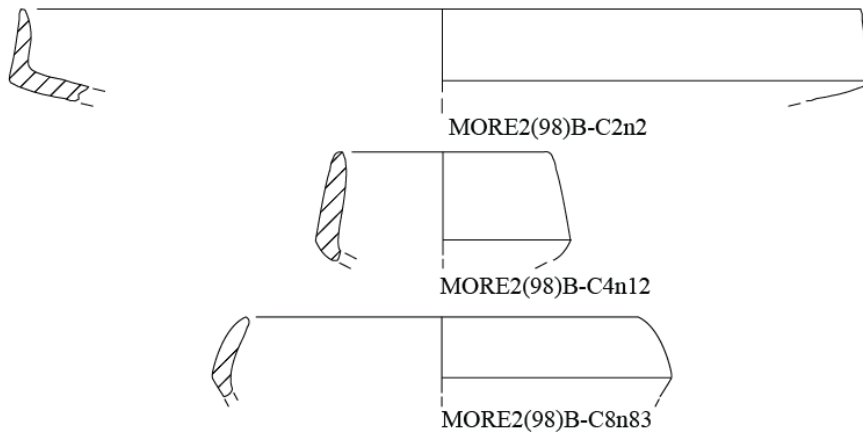


0  4cm

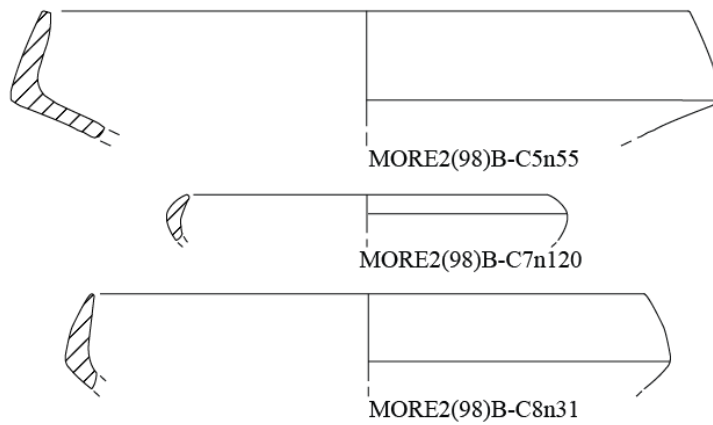
Forma VI.a.5



Forma VI.b.1



Forma VI.b.2



Forma VI.b.3



0  4cm

4.7. Decoradas com Forma

Forma III.a.1



MORE2(99)B-C6n1

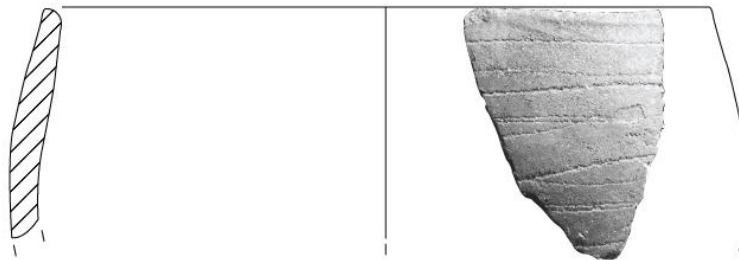


MORE2(98)BC7-48

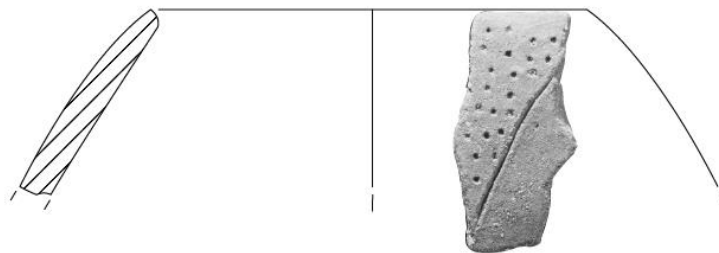


MORE2(99)CC4-n26

Forma III.a.2



MORE2(98)B-C5n68



MORE2(99)CC5-n10



Forma III.b.1



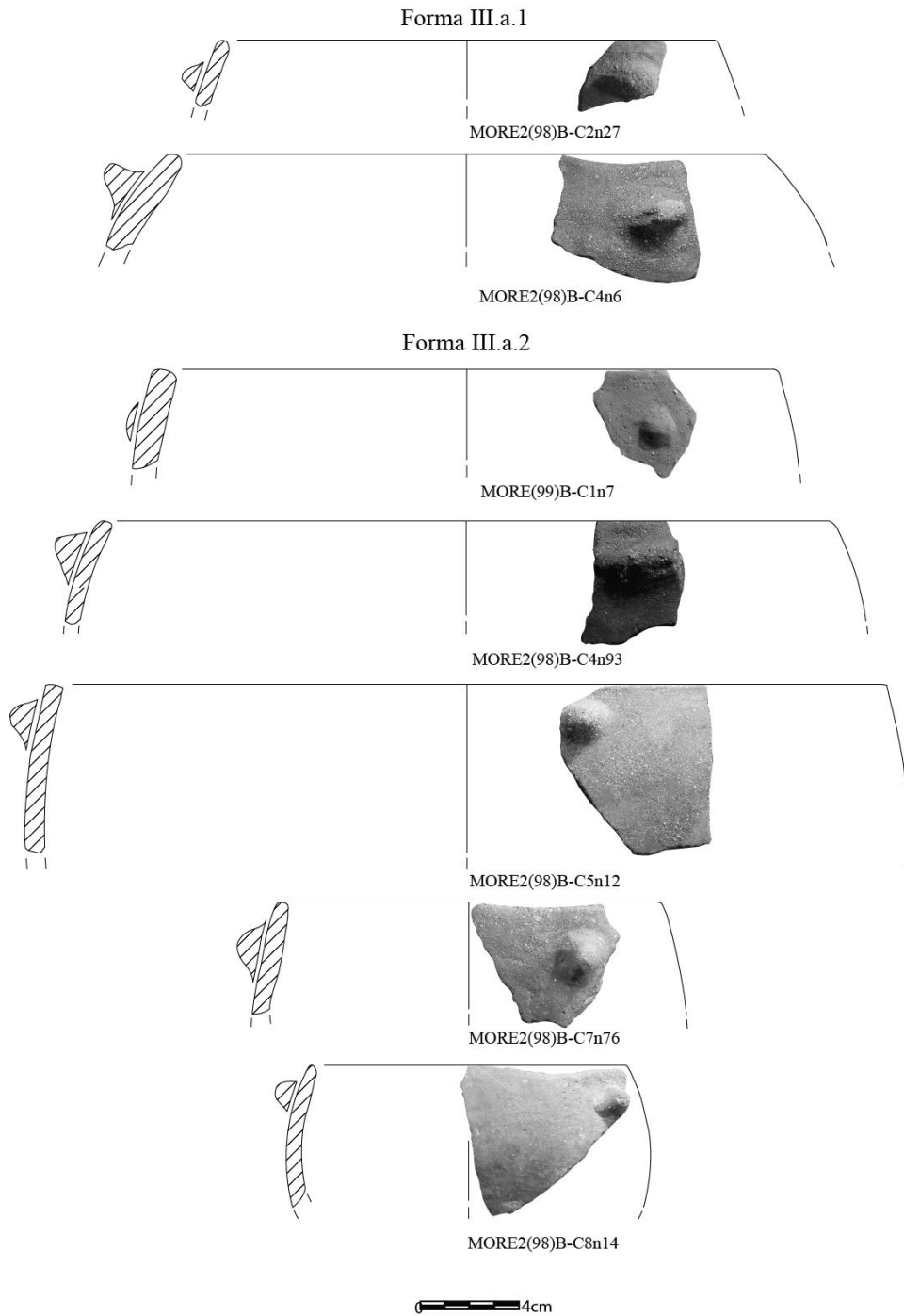
Forma III.h.2



Forma III.a.2



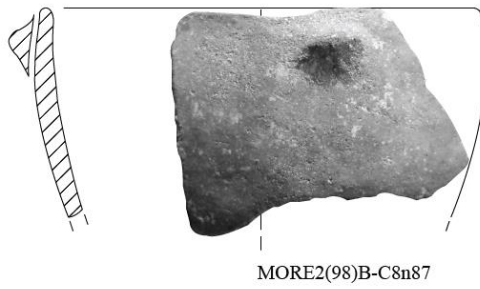
4.8. Modelações plásticas com forma geral



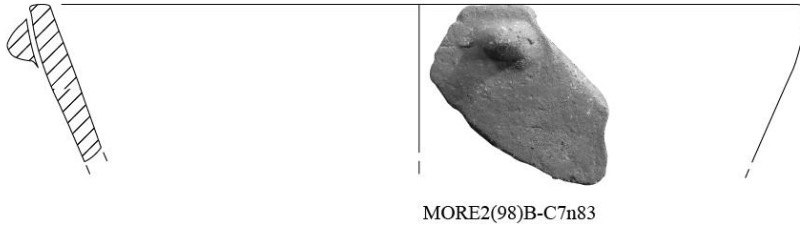
Forma III.d.1



Forma II.a.1



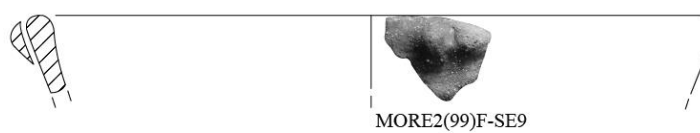
Forma II.a.2



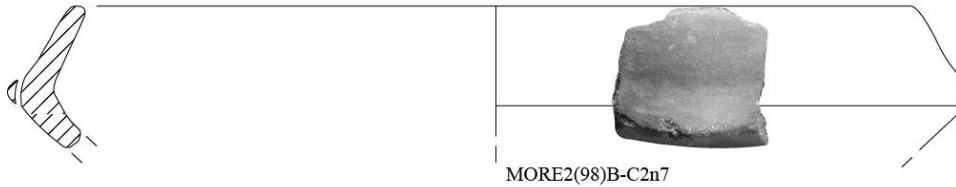
Forma II.d.1



Forma II.h.1

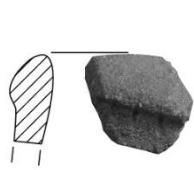


Forma IV.a.1

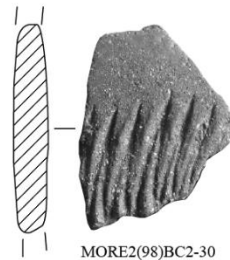


4.2. Materiais sem forma geral

4.1.1. Decoração



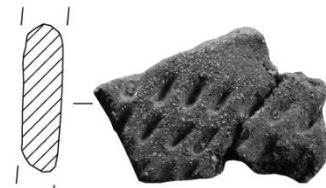
MORE2(99)B-C1n28



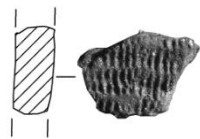
MORE2(98)BC2-30



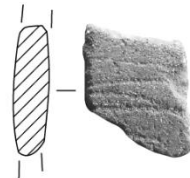
MORE2(98)BC3-28



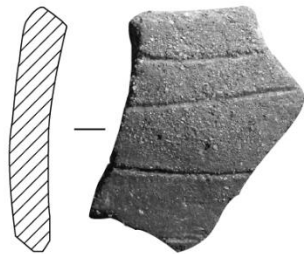
MORE2(98)BC4-1



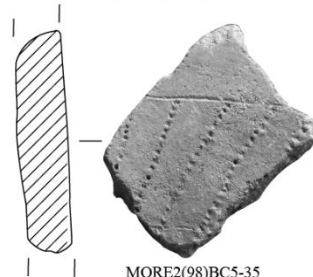
MORE2(98)BC4-23



MORE2(98)BC4-36

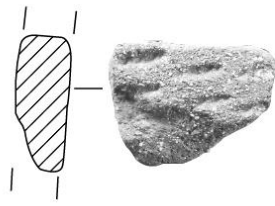


MORE2(98)BC5-6

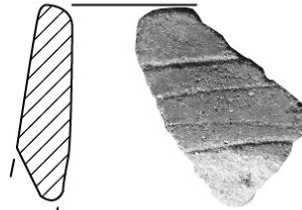


MORE2(98)BC5-35

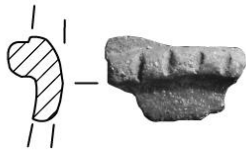




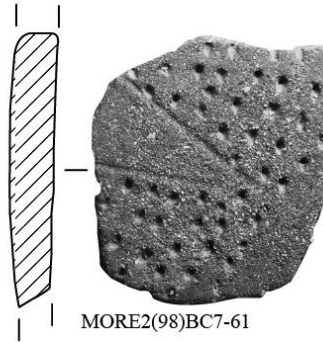
MORE2(98)BC5-87



MORE2(98)B-C6n126



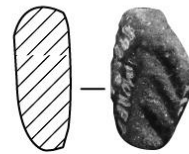
MORE2(98)BC6-84



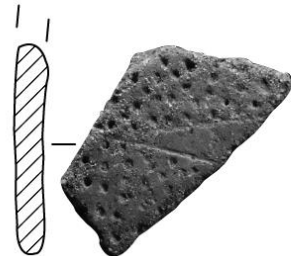
MORE2(98)BC7-61



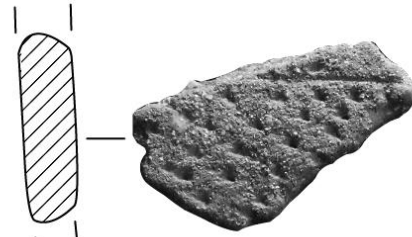
MORE2(98)BC7-91



MORE2(98)BC8-119



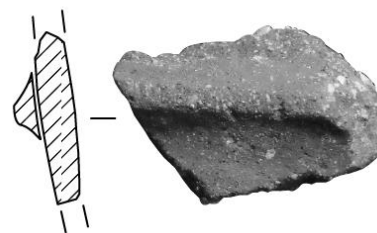
MORE2(98)BC8-129



MORE2(98)A/BS-4



MORE2(99)F-SE13



MORE2(99)CC3C-22



4.1.2. Modelações Plásticas

