



**Queensland University of Technology**  
Brisbane Australia

This is the author's version of a work that was submitted/accepted for publication in the following source:

[Ong, Vanissa A.](#), [Lawrence, Amba](#), [Timms, Peter](#), [Vodstrcil, Lenka A.](#), [Tabrizi, Sepehr N.](#), [Beagley, Kenneth](#), [Allan, John](#), [Hocking, Jane S.](#), & [Huston, Wilhelmina M.](#)  
(2015)

In vitro susceptibility of recent *Chlamydia trachomatis* clinical isolates to the CtHtrA inhibitor JO146.

*Microbes and Infection*, 17(11-12), pp. 738-744.

This file was downloaded from: <https://eprints.qut.edu.au/95792/>

© 2015 Institut Pasteur. Published by Elsevier Masson SAS

Licensed under the Creative Commons Attribution; Non-Commercial; No-Derivatives 4.0 International. DOI: 10.1016/j.micinf.2015.09.004

**Notice:** *Changes introduced as a result of publishing processes such as copy-editing and formatting may not be reflected in this document. For a definitive version of this work, please refer to the published source:*

<https://doi.org/10.1016/j.micinf.2015.09.004>

Elsevier Editorial System(tm) for Microbes and Infection  
Manuscript Draft

Manuscript Number: MICINF-D-15-00151R1

Title: In vitro susceptibility of recent Chlamydia trachomatis clinical isolates to the CtHtrA inhibitor JO146

Article Type: Short communication

Keywords: Chlamydia; clinical isolate; HtrA; inhibitor

Corresponding Author: Dr. Wilhelmina Huston,

Corresponding Author's Institution: Queensland University of Technology

First Author: Vanessa A Ong

Order of Authors: Vanessa A Ong; Amba Lawrence; Peter Timms; Lenka A Vodstrcil; Sepehr N Tabrizi; Kenneth W Beagley; John A Allan; Jane S Hocking; Wilhelmina Huston

Manuscript Region of Origin: AUSTRALIA

Abstract: The present study aimed to establish if a previously identified Chlamydia trachomatis HtrA (CtHtrA) inhibitor, JO146, is effective against currently circulating clinical isolates to validate if CtHtrA is a clinically relevant target for future therapeutic development. Inhibition of CtHtrA during the middle of the chlamydial replicative cycle until the completion of the cycle resulted in loss of infectious progeny for six unique clinical isolates representing different serovars. This supports the potential for CtHtrA to be a clinically relevant target for development of new therapeutics and suggests the importance of further investigation of JO146 as a lead compound.

***In vitro* susceptibility of recent *Chlamydia trachomatis* clinical isolates to the  
CtHtrA inhibitor JO146**

Vanissa A. Ong<sup>a</sup>, Amba Lawrence<sup>a</sup>, Peter Timms<sup>ab</sup>, Lenka A. Vodstrcil<sup>cd</sup>, Sepehr N. Tabrizi<sup>de</sup>,  
Kenneth W. Beagley<sup>a</sup>, John A. Allan<sup>fg</sup>, Jane S. Hocking<sup>c</sup>, Wilhelmina M. Huston<sup>af\*</sup>

<sup>a</sup>School of Biomedical Sciences, Institute of Health and Biomedical Innovation, Queensland  
University of Technology, Q Block, 60 Musk Avenue, Kelvin Grove, QLD, 4059 Australia

<sup>b</sup>Faculty of Science, Health, Education and Engineering, University of the Sunshine Coast,  
Maroochydore, Australia

<sup>c</sup>Centre for Epidemiology and Biostatistics, Melbourne School of Population Health,  
University of Melbourne, Carlton, Australia

<sup>d</sup>Murdoch Children's Research Institute, Parkville, Victoria, Australia

<sup>e</sup>Department of Obstetrics and Gynaecology, University of Melbourne, The Royal Women's  
Hospital, Australia

<sup>f</sup>Wesley and St Andrews Research Institute, The Wesley Hospital, Auchenflower, Australia

<sup>g</sup>UC Health Clinical School, The Wesley Hospital, Auchenflower, Australia

\*Corresponding author:

Email: w.huston@qut.edu.au (W. Huston)

## Abstract

The present study aimed to establish if a previously identified *Chlamydia trachomatis* HtrA (CtHtrA) inhibitor, JO146, is effective against currently circulating clinical isolates to validate if CtHtrA is a clinically relevant target for future therapeutic development. Inhibition of CtHtrA during the middle of the chlamydial replicative cycle until the completion of the cycle resulted in loss of infectious progeny for six unique clinical isolates representing different serovars. This supports the potential for CtHtrA to be a clinically relevant target for development of new therapeutics and suggests the importance of further investigation of JO146 as a lead compound.

**Keywords:** *Chlamydia*; clinical isolate; HtrA; inhibitor;

## 1. Introduction

*Chlamydia (C.) trachomatis* is an obligate intracellular bacterial pathogen and is a commonly reported bacterial sexually transmitted pathogen worldwide. In the United States, over 1.4 million cases of *C. trachomatis* infection were reported in 2012, the highest number of cases ever reported to CDC for any condition [1].

Currently, the recommended first line of treatment for uncomplicated genital *C. trachomatis* infections is a single 1.0 g oral dose of the macrolide antibiotic azithromycin [2]. However, a number of recently published studies challenge the efficacy of azithromycin therapy for chlamydial infections [3-6]. Batteiger and co-workers [6] conducted a cohort

study among adolescent women and used a classification algorithm to characterize treatment outcomes among the study subjects after directly observed azithromycin treatment. Among women with paired episodes of chlamydial infections, 8% were probable treatment failures. A partner treatment study conducted by Golden and co-workers [7] reported that 8% (22 of 289 originally treated for *Chlamydia*) of cases treated reported no sexual intercourse after treatment and were classified as treatment failures. These studies suggest the possible future need for improved anti-chlamydial therapies.

Our group identified a serine protease inhibitor, JO146, against *C. trachomatis* High Temperature Requirement A (CtHtrA) [8-11]. JO146 was found to be lethal to *C. trachomatis* D when added at the mid-replicative stage of the chlamydial developmental cycle [8]. The addition of JO146 was lethal during reversion or recovery from penicillin persistence and during heat stress [12].

Laboratory strains of *C. trachomatis* that are commonly used for biological experiments may not reflect the isolates currently infecting men and women [13]. Differences in genome dynamics, and virulence attributes and infectivity [14-16] may result in varying sensitivities to JO146 between recent clinical isolates and the type strains of *C. trachomatis* used for investigations to date. Therefore, we aimed to validate that CtHtrA is a clinically relevant target for potential future therapeutic development by testing the efficacy of the inhibitor JO146 against recent clinical isolates from women.

## 2. Materials and Methods

### 2.1. Clinical isolates, *Chlamydia* culture and JO146 treatment conditions

Six *C. trachomatis* clinical isolates were obtained and cultured from separate women enrolled in the Australian *Chlamydia* Treatment Study (ACTS) [17] (The Alfred Human Research Ethics Approval number 223/12). The isolates were designated as: 1-017(13) (serovar K), 1-079(1) (serovar G), 1-019(1) (serovar D), 1-048(1) (serovar E), 1-028(1) (serovar E), and 1-020(1) (serovar D). The isolates were cultured in McCoy B cells grown in Dulbecco's minimal essential medium (DMEM, Life Technologies) supplemented with 5% fetal calf serum (Lonza), 10  $\mu\text{g ml}^{-1}$  gentamicin (Invitrogen), 100  $\mu\text{g ml}^{-1}$  streptomycin sulphate (Sigma), incubated at 37°C, 5% CO<sub>2</sub>. For the purposes of this study, JO146 (chemical formula: C<sub>31</sub>H<sub>44</sub>N<sub>3</sub>O<sub>7</sub>P) was commercially synthesised [18]. The compound was synthesised, HPLC purified, and confirmed by MALDI-MS by GL Biochem (Shanghai, China).

The impact of JO146 on *Chlamydia* was determined in McCoy B cells infected at a multiplicity of infection (MOI) of 0.3 by centrifugation for 30 minutes at 500 × g at 28°C. At 16 hours post infection (h PI), the cells were treated with JO146 (0, 10, 50 and 100  $\mu\text{M}$ ) and DMSO (solvent) control (all experiments were done in triplicate, at least two separate experiments, with one representative experiment shown). At the completion of experiment (44 h PI unless otherwise stated) *Chlamydia* was harvested into storage medium (sucrose phosphate glutamate (SPG): 10 mM sodium phosphate (Na<sub>2</sub>HPO<sub>4</sub>), 250 mM sucrose (C<sub>12</sub>H<sub>22</sub>O<sub>11</sub>), 5 mM L-glutamine (C<sub>5</sub>H<sub>10</sub>N<sub>2</sub>O<sub>3</sub>)) for subsequent determination of infectious yield (IFU ml<sup>-1</sup> as described below).

The duration of treatment required for JO146 effect was determined by removal of the compound from the cultures after 8 h treatment. At 16 h PI *C. trachomatis* cultures were treated with either 0  $\mu\text{M}$  (media only), 100  $\mu\text{M}$  JO146, or DMSO. At 24 h PI (i.e. 8 hours after treatment) treatments were removed by three sequential washes with pre-warmed media and the cultures continued until harvest into SPG media at 44 and 68 h PI.

Inclusion forming units (IFU  $\text{ml}^{-1}$ ) were determined by subsequent passage culture on McCoy B cells. The SPG harvested cultures were lysed by sonication (Ultrasonic, Microson) and serially diluted onto McCoy B cultures. At 30 h PI, cultures were fixed and stained using immunocytochemistry for host nucleus and chlamydial inclusions, and examined by microscopy to enumerate inclusion forming units [18].

## 2.2 Confocal microscopy

McCoy B cells infected with *C. trachomatis* cultured on coverslips were used for confocal microscopy. At nominated time points the cells were fixed and immunocytochemistry conducted as previously described [12]. Confocal images were obtained using an Olympus FV1200 confocal laser scanning microscope (FluoView<sup>®</sup> FV1200, Olympus Corporation, Japan). Sizes of 30 independent inclusions for each treatment and time point were measured manually through the use of NIS-Elements Basic Research 3.2 software.

## 2.3 Western blot

Cultures of T25 flasks of McCoy B cells infected with *C. trachomatis* were harvested for western blot analysis of the Major Outer Membrane protein (MOMP) and host  $\beta$ -actin after JO146 treatment at 16 h PI and harvested at 24 h PI. Western blots were conducted as previously described [22].

## 2.4 Statistical analysis

Statistical analysis was performed using PRISM (GraphPad Software Inc., V7.0). Statistical significance was defined as  $p < 0.05$ . Statistical tests used and number of samples are indicated with each figure.



### 3. Results

#### 3.1. *HtrA inhibition using JO146 during McCoy B culture of chlamydial isolates prevents chlamydial inclusion vacuole size development*

Our previous work using HEp-2 cells on *C. trachomatis* D (UW-3/Cx) a long term passaged isolate (referred to here as CtD) demonstrated that the inclusions decreased in size and were lost from the host cells [18]. Therefore, here we examined the morphology of the McCoy B cultures of the clinical isolates at 20, 24, and 40 h PI after JO146 treatment (16 h PI). JO146 treatment resulted in smaller inclusion vacuole sizes than the DMSO treated control cultures (Supplementary Fig. S1). .

Inclusions sizes were measured to quantify these observations. This difference in inclusion size was apparent at 24 h PI although only four clinical isolates (1-079(1), 1-079(13), 1-019(1), and 1-028(1)) showed statistically significant differences ( $p < 0.01$ ) in the size of inclusions compared to DMSO control at this time point (Fig. 1). At 40 h PI, *Chlamydia* inclusions in the presence of JO146 were smaller than those formed in the control (DMSO-treated cells) in all clinical isolates as well as for the *C. trachomatis* D ( $p < 0.0001$ ) (Fig. 1).

#### 3.2. *JO146 treatment during mid-replicative phase of chlamydial development in McCoy B cells resulted in a loss of infectious progeny for clinical isolates*

The effect of 16 h PI JO146 treatment on the development of infectious progeny was tested. No infectious progeny (44 h PI) were observed for all clinical isolates treated with 50 and 100  $\mu\text{M}$  JO146 except for isolate 1-017(13) (Fig. 2). For isolate 1-017(13) treatment with 50  $\mu\text{M}$  JO146 resulted in approximately 1 log less infectious yield compared to DMSO and media controls ( $p < 0.001$ ) and 100  $\mu\text{M}$  resulted in a complete loss of infectious progeny as

consistent with the other clinical isolates. Treatment of the type strain *C. trachomatis* D with 50 and 100  $\mu$ M JO146 both resulted in  $\sim 1.5$  log less infectious progeny compared to that observed in the DMSO control ( $p < 0.0001$ ) (Fig. 2).

The reduction in infectious progeny and reduced inclusion sizes (Fig. 1) should correlate with a decrease in the detection of chlamydial protein. A western blot to detect levels of MOMP 8 h after JO146 treatment, showed a reduction of MOMP levels compared to matched DMSO controls for most of the isolates (Supplementary Fig.S2).

### 3.3. *JO146 requires long treatment times to be effective against C. trachomatis in McCoy B cultures*

In order to determine if JO146 activity against chlamydial clinical isolates is effective with a short duration of treatment, we removed JO146 from the cultures 8 h after addition. This resulted in recovery of infectious progeny at 44 and 68 h PI in all clinical isolates (Fig. 3) in contrast to complete loss of progeny when the compound was left in the cultures (Fig. 2). In *C. trachomatis* clinical isolates 1-028(1) and 1-019(1), there were fewer infectious EBs in cells treated with 100  $\mu$ M JO146 compared to the cells treated with 0  $\mu$ M JO146 (media only) and DMSO controls either at 44 or 68 h PI (Fig. 3). A non-significant increase was observed in the number of infectious progeny at 68 h PI compared to 44 h PI with 100  $\mu$ M JO146 for isolates 1-017(13), 1-079(1), 1-048(1) and 1-020(1) (Fig. 3). Overall, an 8 h JO146 treatment of the cultures resulted in a minor loss of infectious progeny compared to when the compound was left in the cultures until the end of the developmental cycle (Fig. 2), suggesting that in McCoy B cultures there is a need for longer treatment duration for efficacy.

#### 4. Discussion

Here, we set out to determine if these previous observations of a critical function for HtrA during chlamydial replicative phase are relevant for recent clinical isolates of *C. trachomatis*. We demonstrate that addition of JO146 during mid-replicative phase resulted in a complete loss of infectious progeny if the compound is left in the cultures until the completion of the developmental cycle, providing preliminary support that the previous data in type strain cultures can be extrapolated to clinical isolates.

These experiments were conducted in McCoy B cells, as consistent with other previously reported studies on *C. trachomatis* clinical isolates that all mainly use McCoy B cells (mouse fibroblasts) as host cells [19-21]. As we have not extensively studied the effect of JO146 on *Chlamydia* grown on McCoy B cells, we included *C. trachomatis* D as a control in all experiments. We previously demonstrated that treatment of HEp-2 cultures with the CtHtrA inhibitor JO146 resulted in diminishing chlamydial inclusion size, eventual loss of the inclusions, and loss of infectious progeny without being toxic to the host cells [8]. CtHtrA was found to be essential for the reversion and recovery to viability from penicillin persistence and during heat stress [12]. The critical role that CtHtrA plays during the replicative phase of the chlamydial developmental cycle was also demonstrated to be conserved among other *C. trachomatis* strains and other *Chlamydia* species such as *C. pecorum*, *C. suis*, and *C. caviae* [22]. The exact role of CtHtrA for the replicative phase remains unknown, and it is potentially an indirect effect of CtHtrA, and that one or more specific extra-cytoplasmic protein substrates that rely on CtHtrA for assembly is the required factor for replicative phase.

The lack of lethality of 100  $\mu$ M JO146 on type strain *C. trachomatis* D grown in McCoy B cells contrasts our previous result in HEp-2 cells, in which we observed complete loss of progeny for this same strain. These results suggest that there could be differences in

the pharmacokinetics of JO146 between mouse fibroblast (McCoy B) and human epithelial (HEp-2) cell lines, or in the chlamydial susceptibility during growth in these different cell lines. This difference also impacted on inclusion sizes actually slightly increasing over time during the cultures, again this may be due to differences in stability or degradation of JO146 in the fibroblast cells. Previous studies have demonstrated different pharmacokinetics and bioactivity of drugs such as erythromycin in different mammalian cell lines [23, 24].

In the present study the chlamydial inclusions were not completely lost from the host cells after JO146 treatment (in contrast to complete inclusion loss previously observed in HEp-2 cells), however these inclusions did not contain infectious progeny (Fig 1. and Fig 2.) [18]. Infectious progeny (with comparatively minor loss compared to controls) were observed for all strains tested when the cultures were treated with JO146 for 8 h at the replicative phase whereas there was lethality when the inhibitor was left in the cultures until the end of the developmental cycle. This result indicates that the inhibitory effect of JO146 is reversible by removal of the compound from the cultures and may be bacteriostatic, or may require longer than 8 h treatment to be effective in McCoy B cells. Here in McCoy B cells the inclusions fail to increase in size and do not make infectious progeny. This difference in the underlying process leading to loss of infectious progeny could be explained by several reasons; in these fibroblast-like cells perhaps the dosing is reduced due to cellular processes or once the *Chlamydia* in the inclusion have been inhibited by the JO146 treatment in HEp-2 a distinct host process than that of these fibroblasts is able to target the vacuoles. Nonetheless it is clear that CtHtrA is a valid possible target should future therapeutics need to be developed against *Chlamydia*, based on the effectiveness against these clinical isolates.

The subtle differences in JO146 efficacy observed between the isolates and the type strain *C. trachomatis* D is not able to be explained by differences in CtHtrA amino acid sequence. The CtHtrA sequence is highly conserved with at most 4 amino acids different in

the 647 amino acid sequence across the published *C. trachomatis* genomes to date. The *C. trachomatis* genomes cluster into three predominant clades (LGV, T1, T2) [25], the CtHtrA sequences that we have determined so far from our clinical isolates are consistent with the T2 clade (1-017(13), 1-017(1), 1-028(1), 1-048(1) (sequences will be published elsewhere). The amino acid variation is not near the residues that form active site where JO146 binds to the protein and is not likely to explain the variation. However, other differences that might impact on growth kinetics of pharmacokinetics of the drug on the chlamydial strains, as well as differences on the host cell factors do require further investigation in the future.

## **5. Conclusions**

This preliminary study supports that JO146 is effective against recent clinical isolates of *C. trachomatis*. The data indicates that *in vitro* application of an inhibitor compound that targets CtHtrA during the replicative phase of recent clinical isolates of *C. trachomatis* prevents development of infectious progeny. CtHtrA therefore, could be a potential target for future drug development for *C. trachomatis* and we suggest that CtHtrA inhibition and JO146 should be further investigated for improved drug development.

## **Author's contributions**

VAO and AL performed laboratory experiments, and analysed data. PT, LAV, SNT, JSH, WMH were involved in participant collection study, and data analysis. KWB and JAA analysed data. All authors contributed to the manuscript preparation.

## **Competing interests**

The authors declare they have no competing interests.

## Acknowledgments

The project that collected the clinical isolates that were used in this study was funded by NHMRC Project Grant (APP1023239). The work conducted here to analyse the impact of JO146 on these clinical isolates was funded by ARC Linkage Project LP1102500077 which includes partner funding from The Wesley and Saint Andrews Research Institute. Professor Matt Bogyo (Stanford University) and Dr Joel Tyndall (University of Otago) contributed to the identification of JO146. We wish to thank the ACTS study nurses Ruthy McIver and Karen Worthington, and also acknowledge Marcus Chen, Christopher K Fairley and Anna McNulty for facilitating recruitment in their clinics.

## References

- [1] Control CfD, Prevention, Sexually Transmitted Disease Surveillance 2010. Atlanta: US Department of Health and Human Services; 2011, 2012.
- [2] Workowski KA, Levine WC, Sexually transmitted diseases treatment guidelines 2002. *MMWR* 2002; 51: 1-80.
- [3] Horner P, The case for further treatment studies of uncomplicated genital *Chlamydia trachomatis* infection. *Sex Transm Infect* 2006; 82: 340-343.
- [4] Horner PJ, Azithromycin antimicrobial resistance and genital *Chlamydia trachomatis* infection: duration of therapy may be the key to improving efficacy. *Sexually Transmitted Infections* 2012; 88: 154-156.
- [5] Handsfield HH, Questioning azithromycin for chlamydial infection. *Sex Transm Dis* 2011; 38: 1028-1029.
- [6] Batteiger BE, Tu W, Ofner S, Van Der Pol B, Stothard DR, Orr DP, et al., Repeated *Chlamydia trachomatis* genital infections in adolescent women. *Journal of Infectious Diseases* 2010; 201: 42-51.
- [7] Golden MR, Whittington WL, Handsfield HH, Hughes JP, Stamm WE, Hogben M, et al., Effect of expedited treatment of sex partners on recurrent or persistent gonorrhoea or chlamydial infection. *New England Journal of Medicine* 2005; 352: 676-685.
- [8] Gloeckl S, Ong VA, Patel P, Tyndall JD, Timms P, Beagley KW, et al., Identification of a serine protease inhibitor which causes inclusion vacuole reduction and is lethal to *Chlamydia trachomatis*. *Mol Microbiol* 2013; 89: 676-689.
- [9] Huston WM, Swedberg JE, Harris JM, Walsh TP, Mathews SA, Timms P, The temperature activated HtrA protease from pathogen *Chlamydia trachomatis* acts as both a chaperone and protease at 37 degrees C. *Febs Letters* 2007; 581: 3382-3386.

- [10] Huston WM, Theodoropoulos C, Mathews SA, Timms P, Chlamydia trachomatis responds to heat shock, penicillin induced persistence, and IFN-gamma persistence by altering levels of the extracytoplasmic stress response protease HtrA. *BMC Microbiol* 2008; 8: 190.
- [11] Huston WM, Tyndall JD, Lott WB, Stansfield SH, Timms P, Unique residues involved in activation of the multitasking protease/chaperone HtrA from Chlamydia trachomatis. *PLoS One* 2011; 6: e24547.
- [12] Ong VA, Marsh JW, Lawrence A, Allan JA, Timms P, Huston WM, The protease inhibitor JO146 demonstrates a critical role for CtHtrA for Chlamydia trachomatis reversion from penicillin persistence. *Front Cell Infect Microbiol* 2013; 3: 100.
- [13] Joubert BC, Sturm AW, Differences in Chlamydia trachomatis growth rates in human keratinocytes among lymphogranuloma venereum reference strains and clinical isolates. *Journal of medical microbiology* 2011; 60: 1565-1569.
- [14] Borges V, Ferreira R, Nunes A, Sousa-Uva M, Abreu M, Borrego MJ, et al., Effect of long-term laboratory propagation on Chlamydia trachomatis genome dynamics. *Infection, genetics and evolution : journal of molecular epidemiology and evolutionary genetics in infectious diseases* 2013; 17: 23-32.
- [15] Byrne GI, Chlamydia trachomatis strains and virulence: rethinking links to infection prevalence and disease severity. *The Journal of infectious diseases* 2010; 201 Suppl 2: S126-133.
- [16] Sigar IM, Schripsema JH, Wang Y, Clarke IN, Cutcliffe LT, Seth-Smith HM, et al., Plasmid deficiency in urogenital isolates of Chlamydia trachomatis reduces infectivity and virulence in a mouse model. *Pathogens and disease* 2014; 70: 61-69.
- [17] Hocking JS, Vodstrcil LA, Huston WM, Timms P, Chen MY, Worthington K, et al., A cohort study of Chlamydia trachomatis treatment failure in women: a study protocol. *BMC infectious diseases* 2013; 13: 379.
- [18] Gloeckl S, Ong VA, Patel P, Tyndall JD, Timms P, Beagley KW, et al., Identification of a serine protease inhibitor which causes inclusion vacuole reduction and is lethal to Chlamydia trachomatis. *Molecular Microbiology* 2013; 89: 676-689.
- [19] Skinner MC, Stamm WE, Lampe ML, Chlamydia trachomatis laboratory strains versus recent clinical isolates: implications for routine microbicide testing. *Antimicrob Agents Chemother* 2009; 53: 1482-1489.
- [20] Suchland R, Geisler W, Stamm WE, Methodologies and cell lines used for antimicrobial susceptibility testing of Chlamydia spp. *Antimicrobial agents and chemotherapy* 2003; 47: 636-642.
- [21] Samra Z, Rosenberg S, Soffer Y, Dan M, In vitro susceptibility of recent clinical isolates of Chlamydia trachomatis to macrolides and tetracyclines. *Diagn Microbiol Infect Dis* 2001; 39: 177-179.
- [22] Patel P, De Boer L, Timms P, Huston WM, Evidence of a conserved role for Chlamydia HtrA in the replication phase of the chlamydial developmental cycle. *Microbes Infect* 2014; 16: 690-694.
- [23] Knowles DJ, Uptake of erythromycin by McCoy and HEp2 cells: its dependence on cellular pH gradients. *J Antimicrob Chemother* 1988; 21: 765-772.
- [24] Martin JR, Johnson P, Miller MF, Uptake, accumulation, and egress of erythromycin by tissue culture cells of human origin. *Antimicrob Agents Chemother* 1985; 27: 314-319.
- [25] Seth-Smith HM, Harris SR, Skilton RJ, Radebe FM, Golparian D, Shipitsyna E, et al., Whole-genome sequences of Chlamydia trachomatis directly from clinical samples without culture. *Genome Res* 2013; 23: 855-866.

Fig. 1. Inclusion sizes at 20, 24 and 40 h PI for DMSO and JO146 treated isolates of *C. trachomatis* grown in McCoy B cells are shown in the graphs. Each isolate is shown in a separate graph: A. 1-017(13), B. 1-079(1), C. 1-028(1), D. 1-048(1), E. 1-020(1), F. 1-019(1), G. *C. trachomatis* D (UW-3/Cx). Statistical analysis was conducted using Two-Way ANOVA with Bonferroni's multiple comparison tests. The bar colours represent treatment conditions; black: DMSO, and grey 100  $\mu$ M JO146. Data are presented as mean  $\pm$  S.E.M (n=30), \*\* indicates  $p < 0.01$ , \*\*\*\*p  $< 0.0001$ .

Fig. 2. Inclusion forming units after treatment with JO146 at 16 h PI or each of the strains is shown on the graph. The bars are shaded by grey scale (as indicated on the right) to represent the different concentrations of JO146. The identity of each of the isolates is indicated on the x-axis and the IFU  $\text{ml}^{-1}$  are indicated on the y-axis in log scale. The cultures were harvested at 44 h PI and the infectious progeny determined by measuring inclusion forming units that formed infections in a new monolayer of host cells. Statistical analysis was conducted using Two-Way ANOVA with a post hoc Bonferroni multiple comparison test relative to the DMSO control. Error bars represent the standard error of the mean (n=27) (non-logarithmic data), \*\*\* indicates  $p < 0.001$ , \*\*\*\*p  $< 0.0001$ . # indicates no detectable inclusion forming units.

Fig. 3. Inclusion forming units  $\text{ml}^{-1}$  at 44 and 68 h PI after JO146 addition at 16 h PI and removal after 8 h (at 24 h PI). Conditions are represented by the coloured bars on the right (black: media only (0  $\mu$ M JO146), grey: DMSO, white: 100  $\mu$ M JO146). Each isolate is shown in a separate graph: A. 1-017(13), B. 1-079(1), C. 1-028(1), D. 1-048(1), E. 1-020(1), F. 1-019(1), G. *C. trachomatis* D (UW-E/Cx). The IFU  $\text{ml}^{-1}$  are indicated on the y-axis and the two time points (44 and 68 h PI) are indicated on the x-axis. The cultures were harvested at 44 h PI and the infectious progeny determined by measuring inclusion forming units that



formed infections in a new monolayer of host cells. Statistical analysis was conducted using Two-Way ANOVA with a post hoc Bonferroni multiple comparison test relative to the DMSO control. The error bars represent the standard error of the mean (n=27) (error bars are for the non-logarithmic scale), \*\*\*\*p < 0.0001.

## Supplementary material

Supplementary Fig. S1. Confocal microscopy images of *C. trachomatis* clinical isolates treated with JO146 or DMSO at 16 h PI and examined at 20, 24, and 40 h PI. Representative images of control (DMSO treated) cultures are shown on the left panel while representative images of cultures treated with JO146 are shown on the right for each time point (time points indicated above figure) (strain identity indicated to left of the figure). The image colours are as follows, green; MOMP (major outer membrane protein); blue: host cell nucleus (stained by DAPI); red:  $\beta$  actin (stained by phalloidin 594). Scale bar (bottom left) indicates 10  $\mu$ m.

Supplementary Fig S2. Western blot for MOMP in cell lysates of JO146-treated and DMSO-treated *C. trachomatis* clinical isolates in McCoy B cells. JO146 or DMSO were added at 16 h PI and cells were harvested at 24 h PI (i.e. 8 hours after treatment). Treatments are indicated above each lane at the top of each isolate name. “+” denotes treatment with JO146 and “-“ denotes treatment with DMSO control. Laboratory strain *C. trachomatis* D (UW-3/Cx) (CtD) was included as a control strain. The size of relevant molecular weight markers are indicated to the right of the figure and the western blot identity (i.e. MOMP or  $\beta$ -actin) are indicated to the left.

Figure

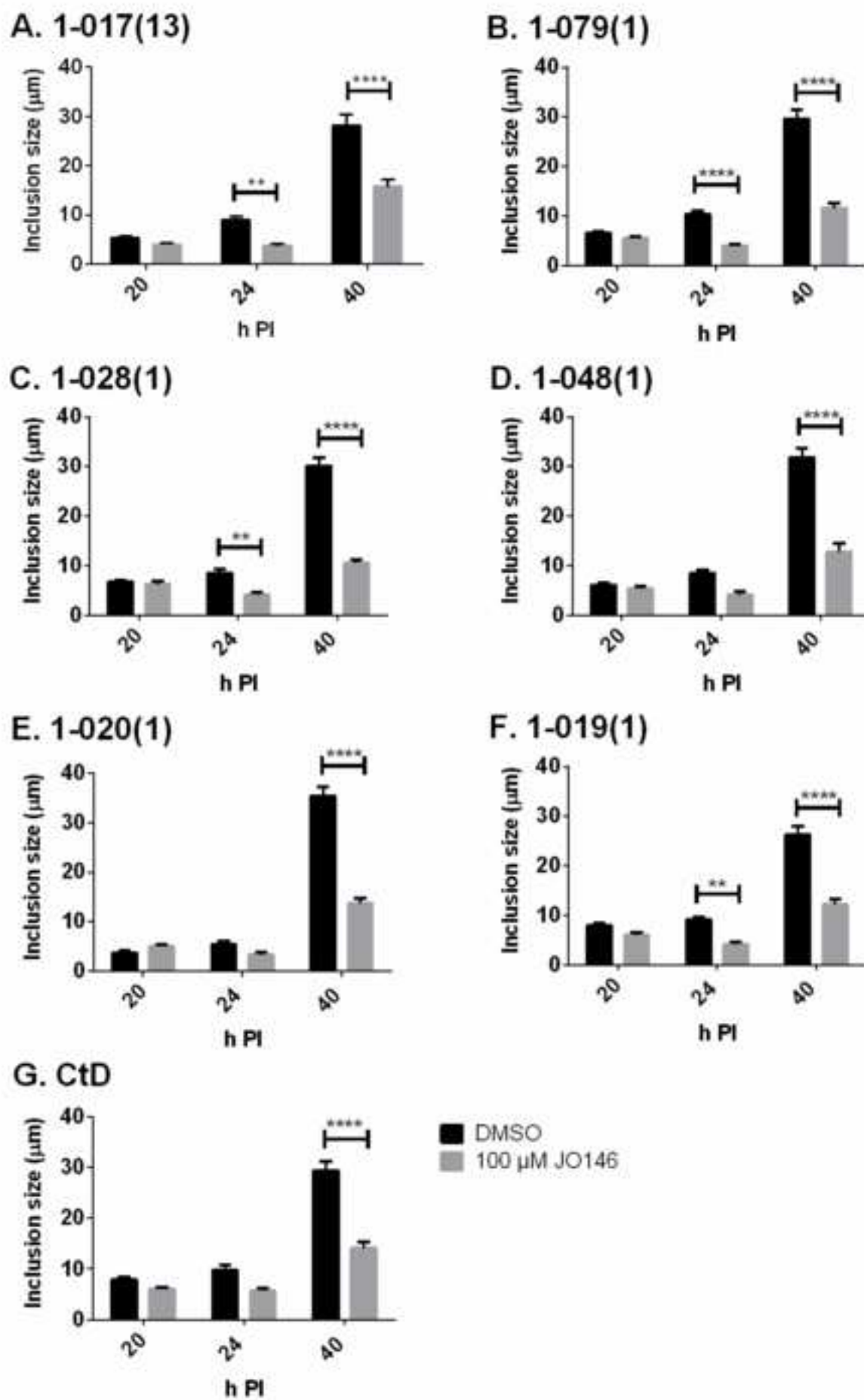
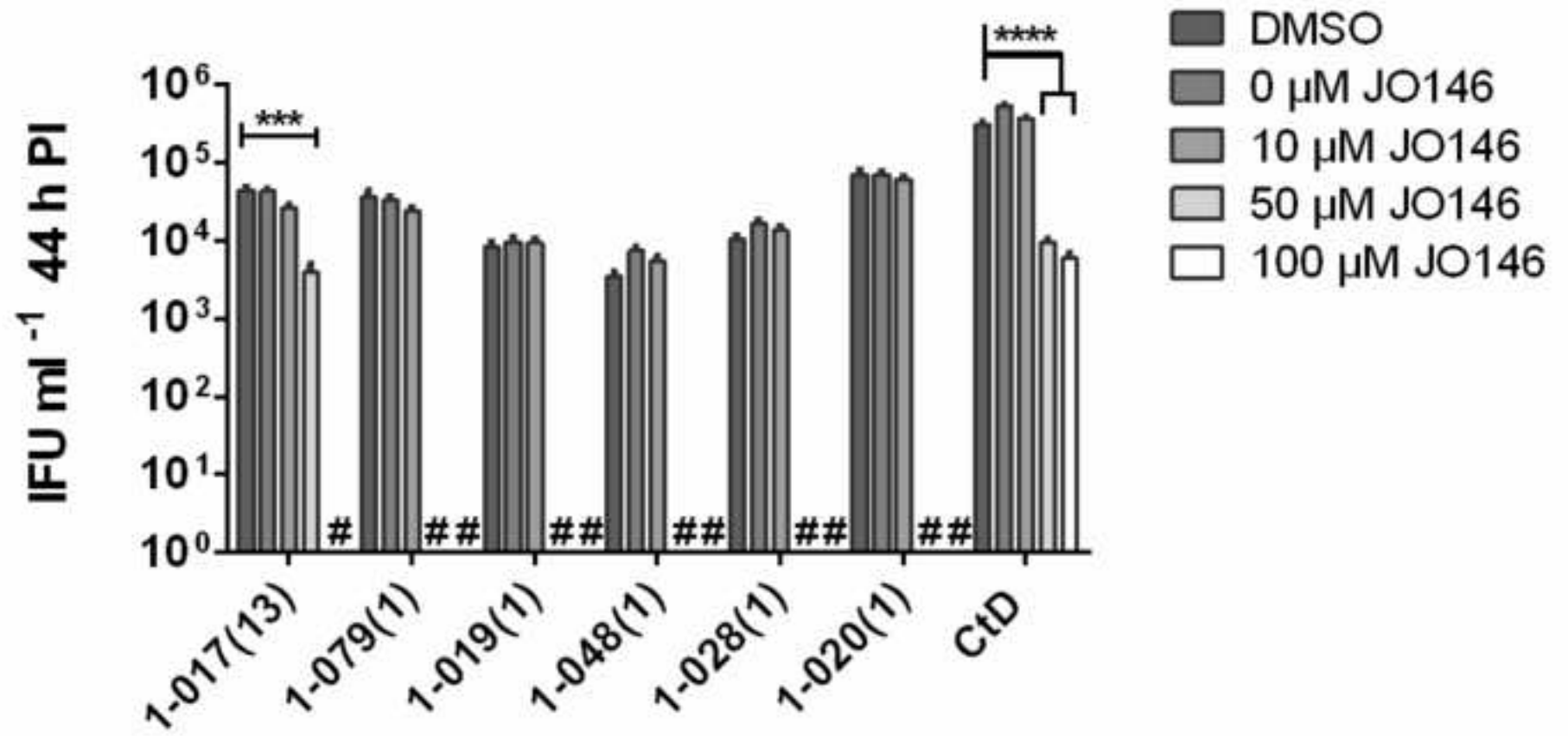
[Click here to download high resolution image](#)

Figure  
[Click here to download high resolution image](#)



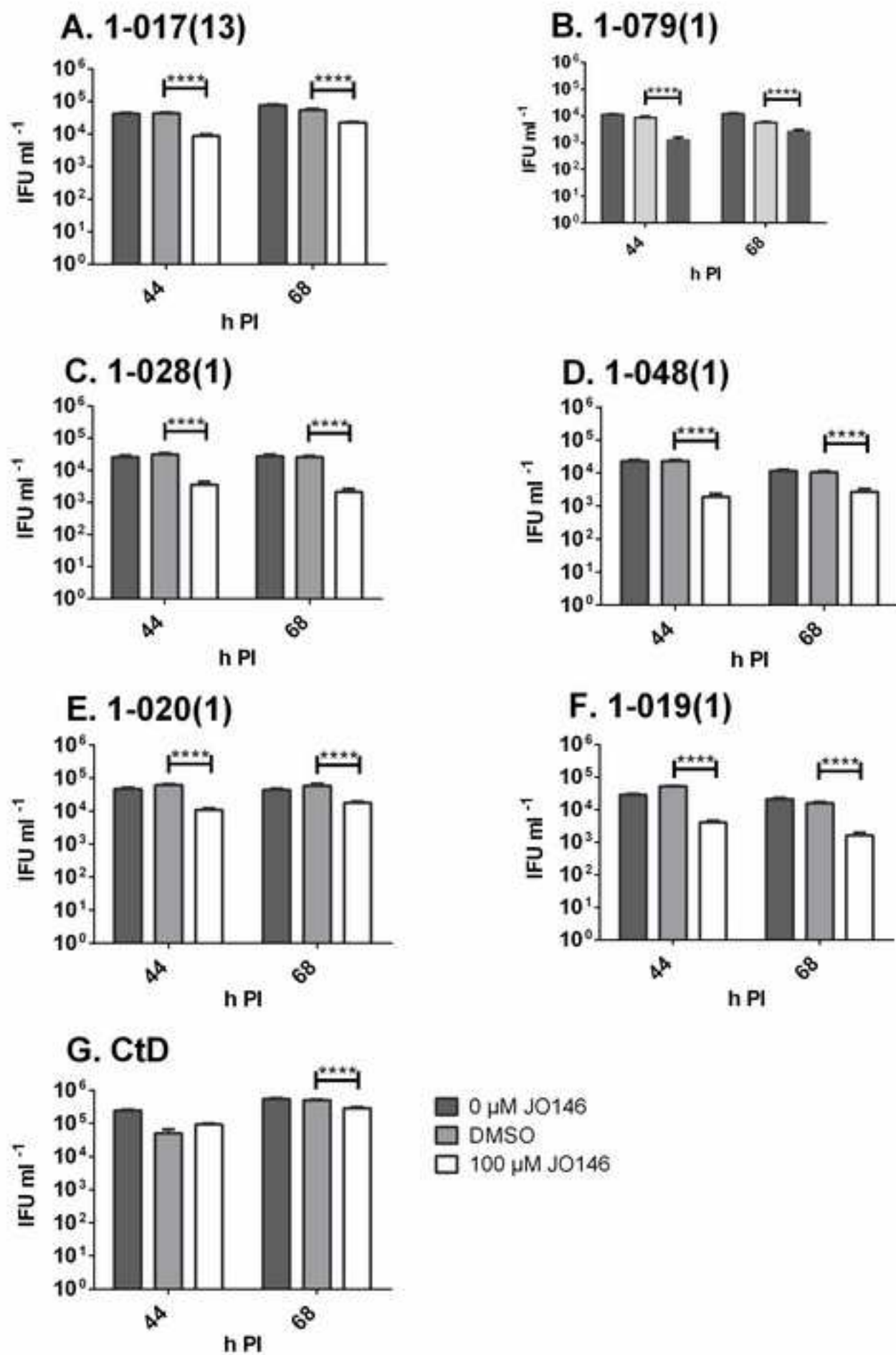
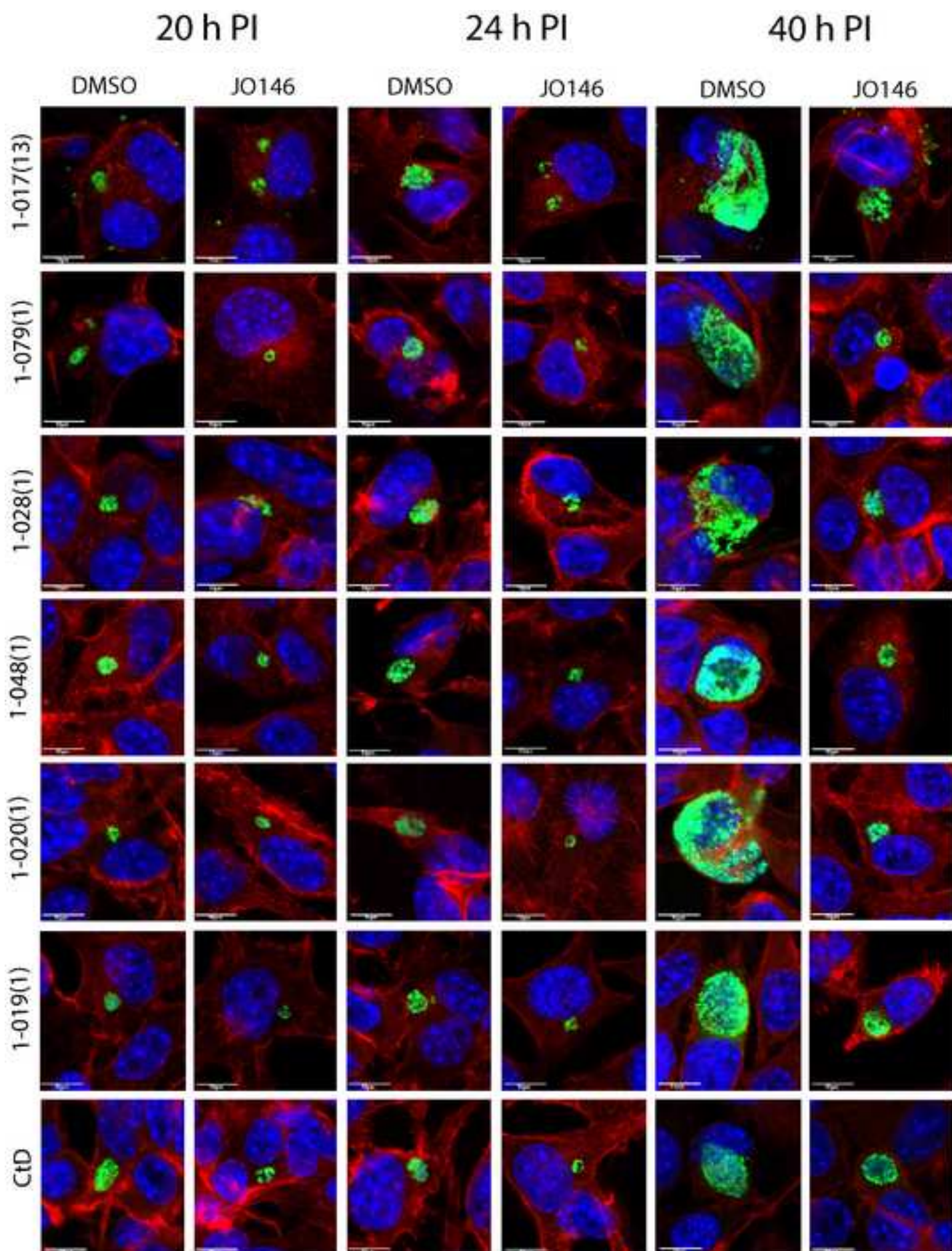
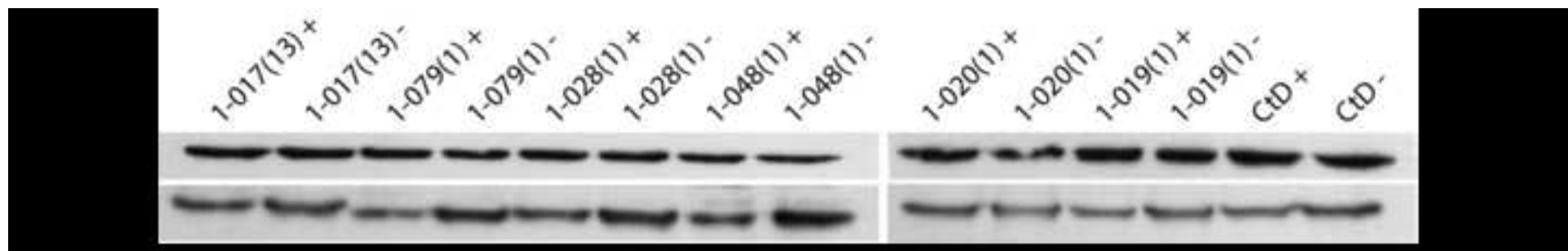


Figure  
[Click here to download high resolution image](#)



Figure

[Click here to download high resolution image](#)



Dear Professor Greub,

Please find below our detailed response to reviewers and the revised manuscript files have been uploaded via the online system.

We feel we have adequately addressed the reviewers concerns and that the manuscript should now be acceptable for publication in *Microbes and Infection*. We have shortened the manuscript to a short communication so in addition to the changes noted below we have altered the manuscript to be more concise and remove some text to fit this format.

We appreciate the reviewers and your efforts to improve the manuscript.

Yours sincerely,  
Willa Huston  
(on behalf of all authors)

Reviewer #1:

Major comments:

3.1. paragraph 2. An increase of the inclusion size for all the strains tested between 20 and 40h p.i. is observed suggesting that Chlamydia is able to grow but more slowly? How to explain that? A comment about that should be added in the article.

*Response: A sentence has been added to the discussion to speculate that the compound might be degrading more quickly in the McCoy cells (used in this study) than in HEp2 cells (previously used in our prior work.*

: This difference also impacted on inclusion sizes actually slightly increasing over time during the cultures, again this may be due to differences in stability or degradation of JO146 in the fibroblast cells.

3.1. paragraph 2. For the control CtD, a slight increase of the inclusion size is also observed. This result is in contrast to the previous article (S. Gloeckl et al., 2013) showing a slight decrease of the inclusion size. How to explain this discrepancy?

*Response: JO146 has different effectivity between McCoy cells and HEp2 cells, indicating that different mechanisms of compound absorption might be present for these two cell lines. We have found in our laboratory that JO146 is less effective when Chlamydia are grown in McCoy cells than in HEp2 cells. Hence, for this particular experiment, JO146 was less effective on CtD because McCoy cells were used in this study, compared to our previous article (Gloeckl et al, 2013) wherein JO146 was more effective on CtD and HEp2 cells were used. This has now been addressed in the discussion as above.*

3.2. paragraph 1. The absence of infectious progeny does not prove the lethal effect of the JO146. One hypothesis could be that the JO146 could just block/slow down the developmental cycle and delay/prevent reconversion into EBs. If there is no EBs at 44h p.i., there is no infection. In this trend, it could be interesting to make electron microscopy at 44h p.i. to evaluate the % of EBs versus RBs and compare treated versus non-treated infected cells. Moreover, to prove that the prolonged treatment with JO146 (16-44h) is really lethal for Chlamydia, the inhibitor can be removed (44h) and let the infected cells to grow again and finally evaluate the growth by qPCR, and infectious progeny yields.



*Response: These experiments could be interesting; however they are beyond the scope of this work, and as suggested by reviewer 2 this article has now been shortened to a short communication.*

3.2. paragraph 2. A relative quantification of the signal should be added to strengthen the decrease of the MOMP protein.

*Response: We agree this is a good idea, however, this was only at 8 hours and the most marked differences are likely to be later in the culture. We have actually used the advice of reviewer 2 and converted the manuscript to a short communication, meaning the western blot is now supplementary data. Therefore, given the shortening of the manuscript and that greater differences are likely to be not detectable until longer experiments that are not relevant to the scope of this paper we have excluded the addition of this densitometric data in the revised manuscript.*

3.3. This paragraph shows that the JO146 seems not to be lethal since when JO146 is removed (8h treatment) infectious progeny is obtained at 44 and 68h p.i.. It could be interesting to make a growth kinetic by quantifying bacterial genomic DNA by qPCR at different time post-infection and compare different treatment.

*Response: These experiments could be interesting; however they are beyond the scope of this work, and as suggested by reviewer 2 this article has now been shortened to a short communication*

Minor comments:

2.1., paragraph 2, line 4: replace 'on at least two separate occasions' by 'on at least two separate experiments'

*Paragraph 2, line 4 has been changed to  
"on at least two separate **experiments**"*

2.1. paragraph 2, line 5: replace 'occasion' by 'experiment'

*Paragraph 2, line 5 has been changed to  
"**experiment**"*

2.3. align the paragraph

*The paragraph has been aligned.*

Lethal or lethality should be replaced by 'complete inhibition of the developmental cycle' or 'complete loss of infectious progeny'

*This has been done throughout the results, discussion, and conclusion sections.*

Reviewer #2:

I suggest that this work may be presented as a short form paper. The microscopy panel in Fig 1 and measurement of inclusion sizes in Fig 2 and western blot in Fig 4 are mainly redundant information so Fig 1 and Fig 4 may be provided as supplementary information.

*Response: The paper has been changed from a journal article into a short communication. Figures 1 and 4 have been made as supplementary information.*

## Specific comments

The clinical isolates tested were in fact more sensitive to J0146 compared to a lab strain. However the potency of J0146 was lower than previously shown for the lab strain. The authors draw the conclusion that J0146 is less potent in Chlamydia grown in McCoy cells compared to Chlamydia grown in HEp-2 cells although this particular comparison has not been performed. Batch variation and storage may also affect the potency of compounds. To draw that conclusion the authors need to include testing of the same batch of J0146 for the lab strain in HEp-2 cells, and present it at least as a comment in the text.

*Response: We agree that different batches can have different inhibitory effect on Chlamydia strains. However, we have previously observed many times in our laboratory that JO146 stocks of the same batch have different inhibitory effect on Chlamydia cultured in different cells lines, McCoy and HEp2. Whilst we agree that different batches of the compound may be a factor that contributes to its varying effectivity in McCoy and HEp2, the differences in the pharmacokinetics (absorption, distribution, metabolism and excretion) of JO146 between HEp2 and McCoy cells would have been a bigger factor that affects its varying effectivity between these two cell lines.*

*Given this paper is not a short communication format the inclusion of this additional experiment is beyond the scope of the manuscript.*

The authors discuss that uptake and elimination of compound may be different in different cell lines. Antimicrobial susceptibility testing is not standardized for Chlamydia and since clinical strains are usually isolated on McCoy cells testing in this cell line is relevant. The authors' conclusion that it is important to test novel compounds not just in different Chlamydia strains but also in different cell lines should be more clearly written in the discussion.

*Response: the following sentence has been added to the discussion: However, other differences that might impact on growth kinetics of pharmacokinetics of the drug on the chlamydial strains, as well as differences on the host cell factors do require further investigation in the future.*

The latter part of the last sentence in the abstract "...and suggests the importance of further investigation in additional cell lines and chlamydial strains." needs to be rephrased. This particular inhibitor has been investigated in quite a few strains and now a couple of different cell lines. What is really interesting is why the effect is different in different cell lines and of course development of more potent HtrA inhibitors.

*Response: The final sentence of the abstract has been edited to state: 'of JO146 as a lead compound'.*

Page 5 section 2.1: No reference is given for compound J0146.

*Response: The appropriate references has been inserted.*

Page 19 Figure legend 3: It needs to be clarified that the data is on formation of infectious progeny.

*Response: Now Fig 2 in revised manuscript*

*The following line has been made added to the figure legend for Figure 3 - now figure 2.  
“The cultures were harvested at 44 h PI and the infectious progeny determined by measuring inclusion forming units that formed infections in a new monolayer of host cells.”*

Page 20 Figure legend 5: Is this also infectious progeny? It is not clear from the figure legend.

*The following line has been made added to the figure legend for Figure 5 - now figure 3.  
“The cultures were harvested at 44 h PI and the infectious progeny determined by measuring inclusion forming units that formed infections in a new monolayer of host cells.”*

Reviewer #3:

1. The first sentence of the introduction where they say it is the most commonly reported sexual pathogen should be cited OR changed so the language is not as strong language.

*Response:*

*The phrase in paragraph 1 section 1 has been changed to  
“a commonly” From “the most commonly”*

2. Section 2.3 of the methods is indented improperly

*Response: Section 2.3 of the Methods has been properly aligned.*

3. In results section 3.1 CtD strain should be defined in the text, at its first use is before its mention the legend of figure 4 (is it a lab strain or another clinical strain?)

*Response:*

*The following line has been added to the first line in paragraph 1 section 3.1 after the phrase “C. trachomatis D (UW-3/Cx)” “(CtD), a long term passaged isolate”*

*Consequently, this phrase has been deleted in paragraph 2 section 3.1 to avoid repetition.*

4. Page 9 line 3 should be referring to figure 3 not 4

*Response: Page 9 line 3 has been changed to*

*“Figure 2” From: “Figure 4” (now fig 2 due to changing to short communication)*

5. In Figure 4, it should be indicated which band is which protein on the actual figure if possible

*Response: Figure 4 (Supplementary Fig S2 now) has been edited and a new figure which indicates which band is which protein, and with appropriate band size has been added*

6. It is mentioned throughout the text that this drug kills Chlamydia, however there is no evidence that suggests this, as there is more evidence that JO146 is a bacteriostatic as oppose to a bacteriocidal antimicrobial. These statements should be changed throughout the entire paper as this is extremely misleading.

*Response: As per previous reviewer - we have removed all mention of the word lethal and changed to loss of infectious progeny.*

7. In the conclusion section there is a red line at the title of section 5

*Response: this red line has been removed.*

8. I was wondering if the authors could comment or speculate on a potential mechanism of action for how JO146 inhibits Chlamydial cell division, perhaps they could comment on the role of the protease CtHtrA in the bacteria's cell cycle.

*Response: The following comment has been added to the discussion.*

*The exact role of CtHtrA for the replicative phase remains unknown, and it is potentially an indirect effect of CtHtrA, and that one or more specific extra-cytoplasmic protein substrates that rely on CtHtrA for assembly is the required factor for replicative phase.*

#### Experiments

1. Figure 4, the differences observed are negligible, if a different western blot could be provided, where the differences are more apparent that would make this much more acceptable, alternatively this could be supplemented with RT-qPCR for a constitutively expressed gene to demonstrate this difference.

*Response: Please see previous comments. This is a good suggestion however it is beyond the scope of this work which was simply aiming to demonstrate effectiveness against clinical isolates rather than mechanism of activity. This manuscript has now been shortened to a short communication format to inclusion of these additional experiments is not valid.*

#### Reviewer #4:

The authors reported that Chlamydia trachomatis HtrA (CtHtrA) inhibitor, JO146, known to inhibit Chlamydia trachomatis growth in cell culture, also inhibited the growth of Chlamydia trachomatis clinical isolates in cell culture. The result is not surprising given that CtHtrA is a highly conserved protease. Thus, there is not enough new information in the manuscript. To show the clinical relevance of the inhibitor, the authors should test the inhibitor in animal models.

*Response: The animal model is beyond the scope of this publication. We have presented the mouse model work previously in the 2013 Mol Micro publication.*