

Body mass index, abdominal fatness, fat mass and the risk of atrial fibrillation: a systematic review and dose–response meta-analysis of prospective studies

Dagfinn Aune^{1,2,3} · Abhijit Sen¹ · Sabrina Schlesinger² · Teresa Norat² · Imre Janszky¹ · Pål Romundstad¹ · Serena Tonstad⁴ · Elio Riboli² · Lars J. Vatten¹

Received: 22 November 2016 / Accepted: 1 February 2017
© The Author(s) 2017. This article is published with open access at Springerlink.com

Abstract Different adiposity measures have been associated with increased risk of atrial fibrillation, however, results have previously only been summarized for BMI. We therefore conducted a systematic review and meta-analysis of prospective studies to clarify the association between different adiposity measures and risk of atrial fibrillation. PubMed and Embase databases were searched up to October 24th 2016. Summary relative risks (RRs) were calculated using random effects models. Twenty-nine unique prospective studies (32 publications) were included. Twenty-five studies (83,006 cases, 2,405,381 participants) were included in the analysis of BMI and atrial fibrillation. The summary RR was 1.28 (95% confidence interval: 1.20–1.38, $I^2 = 97%$) per 5 unit increment in BMI, 1.18 (95% CI: 1.12–1.25, $I^2 = 73%$, $n = 5$) and 1.32 (95% CI: 1.16–1.51, $I^2 = 91%$, $n = 3$) per 10 cm increase in waist and hip circumference, respectively, 1.09 (95% CI: 1.02–1.16, $I^2 = 44%$, $n = 4$) per 0.1 unit increase in waist-to-hip ratio, 1.09 (95% CI: 1.02–1.16, $I^2 = 94%$, $n = 4$)

per 5 kg increase in fat mass, 1.10 (95% CI: 0.92–1.33, $I^2 = 90%$, $n = 3$) per 10% increase in fat percentage, 1.10 (95% CI: 1.08–1.13, $I^2 = 74%$, $n = 10$) per 5 kg increase in weight, and 1.08 (95% CI: 0.97–1.19, $I^2 = 86%$, $n = 2$) per 5% increase in weight gain. The association between BMI and atrial fibrillation was non-linear, $p_{\text{nonlinearity}} < 0.0001$, with a stronger association at higher BMI levels, however, increased risk was observed even at a BMI of 22–24 compared to 20. In conclusion, general and abdominal adiposity and higher body fat mass increase the risk of atrial fibrillation.

Keywords Obesity · BMI · Waist circumference · Hip circumference · Waist-to-hip ratio · Fat mass · Fat percentage · Atrial fibrillation · Meta-analysis

Introduction

The prevalence of overweight and obesity has increased rapidly over the last decades in all areas of the world [1]. Overweight and obesity are important risk factors for a wide range of chronic diseases, including cardiovascular diseases, type 2 diabetes, gallbladder disease, total mortality and several types of cancer [2–11], and the current trends are a major challenge for public health both in terms of reduced quality of life and increased medical costs [12].

Atrial fibrillation is the most common arrhythmia diagnosed in clinical practice [13] and globally there was an estimated 5 million incident cases in 2010 [14], while the prevalence was estimated at 33 million in 2015 [15]. The prevalence of atrial fibrillation has been projected to increase 2.5-fold in the next 50 years, mainly due to an aging population, but also due to an increased incidence of the disease [13]. Patients with atrial fibrillation are at

Electronic supplementary material The online version of this article (doi:10.1007/s10654-017-0232-4) contains supplementary material, which is available to authorized users.

✉ Dagfinn Aune
d.aune@imperial.ac.uk

¹ Department of Public Health and General Practice, Faculty of Medicine, Norwegian University of Science and Technology, Trondheim, Norway

² Department of Epidemiology and Biostatistics, School of Public Health, Imperial College London, St. Mary's Campus, Norfolk Place, Paddington, London W2 1PG, UK

³ Bjørknes University College, Oslo, Norway

⁴ Department of Preventive Cardiology, Oslo University Hospital Ullevål, Oslo, Norway

increased risk of cardiovascular diseases including ischemic heart disease, heart failure, sudden cardiac death, stroke, as well as chronic kidney disease and all cause mortality [16]. The economic costs due to atrial fibrillation in the US has been estimated at more than \$6 billion annually [17]. Overweight and obesity have been associated with increased risk of atrial fibrillation in several studies [18, 19]. Some studies suggested a J-shaped dose–response relationship between BMI and atrial fibrillation [20, 21], however, other studies suggested a linear association [22–28]. In addition, it is not clear whether other measures of body fatness such as waist circumference [26, 29–32], hip circumference [30, 32, 33], waist-to-hip ratio [29, 30, 32, 33], fat mass [30–32, 34], or body fat percentage [30, 31, 34] are associated with risk of atrial fibrillation or if the association differs by geographic location or ethnicity. Although a meta-analysis from 2008 found that both overweight and obesity as measured by body mass index (BMI) was associated with increased risk of atrial fibrillation [35], at least 20 additional studies involving >78,000 atrial fibrillation cases and >2.2 million participants have been published since that meta-analysis [20, 21, 23–31, 33, 34, 36–42]. Given the large number of additional studies that have been published since the previous meta-analysis and the availability of data regarding other adiposity measures as well, we conducted a systematic review and dose–response meta-analysis of prospective studies that investigated the association between body mass index, waist circumference, waist-to-hip ratio, or other measures of adiposity (hip circumference, fat mass, weight, weight gain) and the risk of atrial fibrillation.

Methods

Search strategy and inclusion criteria

We searched the PubMed and Embase databases up to October 24th 2016 for eligible studies (DA, SS and AS). A list of the search terms used are provided in Supplementary Tables 1 and 2. We followed standard criteria (MOOSE Guidelines) for reporting meta-analyses [43]. In addition, we searched the reference lists of previous meta-analyses [2, 35, 44] and the reference lists of the relevant publications for further studies. Study quality was assessed using the Newcastle–Ottawa scale [45].

Study selection

We included prospective and retrospective cohort studies and nested case–control studies of the association between adiposity measures (BMI, waist circumference, and waist-to-hip ratio, hip circumference, body fat mass, fat

percentage, weight, weight gain) and risk of atrial fibrillation that were published in English. Studies in high-risk populations (patient populations), abstract only publications, grey literature and unpublished studies were excluded. Adjusted relative risk (RR) estimates (hazard ratios, risk ratios, or odds ratios) had to be available with the 95% confidence intervals (95% CIs) in the publication and for the dose–response analysis, a quantitative measure of adiposity and the total number of cases and person-years or non-cases for at least 3 categories of the adiposity variable or on a continuous scale had to be available in the publication. When multiple publications were available from the same study we used the study with the largest number of cases, but when data on different anthropometric measures were covered by different publications from the same study both were included, but each study was only included once in each analysis. A list of the excluded studies and exclusion reasons are found in the Supplementary Table 3.

Data extraction

We extracted the following data from each study: The first author’s last name, publication year, country where the study was conducted, study period, sample size, number of cases/controls, exposure variable, exposure level, relative risks and 95% confidence intervals for the highest versus the lowest level of the exposure variable and variables adjusted for in the analysis. Data were extracted by one reviewer (DA) and checked for accuracy by a second reviewer (AS).

Statistical analysis

We calculated summary RRs and 95% CIs for a 5 unit increment in BMI, 10 cm increment in waist and hip circumference, a 0.1 unit increment in waist-to-hip ratio, and a 5 kg increment in fat mass and weight, 10% increase in body fat percentage, and 5% increase in weight gain using a random effects model [46]. For the primary analysis we used the model from each study that had the greatest degree of control for potential confounding with the exception of when potential intermediate risk factors were adjusted for in a separate step (as an exploration of how much of the association might be mediated by cholesterol for example). The average of the natural logarithm of the RRs was estimated and the RR from each study was weighted according to the method of DerSimonian and Laird [46]. A two-tailed $p < 0.05$ was considered statistically significant. If studies reported results separately for men and women or other subgroups we combined the subgroup-specific estimates using a fixed-effects model to generate an overall estimate so that each study was only represented once in the main

analysis, but sex-specific results are presented separately in subgroup analyses.

The method described by Greenland and Longnecker [47] was used for the dose–response analysis and we calculated study-specific slopes (linear trends) and 95% CIs from the natural logs of the reported RRs and CIs across categories of each adiposity measure. The mean or median level of each adiposity measure in each category was assigned to the corresponding relative risk for every study and for studies that reported the exposures in ranges we calculated the average of the upper and the lower cut-off point which was used as a midpoint. When the lowest or highest category was open-ended or had an extreme range we used the width of the adjacent interval to calculate an upper or lower confidence interval. A potential nonlinear dose–response relationship between BMI and waist circumference and risk of atrial fibrillation was examined by using fractional polynomial models [48]. We determined the best fitting second order fractional polynomial regression model, defined as the one with the lowest deviance. A likelihood ratio test was used to assess the difference between the nonlinear and linear models to test for non-linearity [48].

Subgroup analyses stratified by sex, measurement versus self-report of adiposity measures, duration of follow-up, geographic location, number of cases, study quality scores, and adjustment for confounders (age, smoking, alcohol, and physical activity) and potential intermediates (hypertension, blood pressure, cholesterol, diabetes mellitus, coronary heart disease, heart failure, and left ventricular hypertrophy) were conducted to investigate potential sources of heterogeneity and heterogeneity between studies was quantitatively assessed by the Q test and I^2 [49]. Meta-regression analyses were used to examine between subgroup differences in the summary estimates. Small study effects, such as publication bias, were assessed by inspecting the funnel plots for asymmetry and with Egger's test [50] and Begg's test [51] with the results considered to indicate small study effects when $p < 0.10$. Sensitivity analyses excluding one study at a time were conducted to clarify whether the results were simply due to one large study or a study with an extreme result.

Results

We identified 29 prospective studies (32 publications) that were included in the systematic review of BMI, waist circumference, hip circumference, waist-to-hip ratio, body fat mass, body fat percentage, weight, and weight gain and risk of atrial fibrillation (Supplementary Table 4, Fig. 1) [18–34, 36–42, 52–59]. Only one study reported on pericardial fat, intrathoracic fat, and abdominal visceral fat and

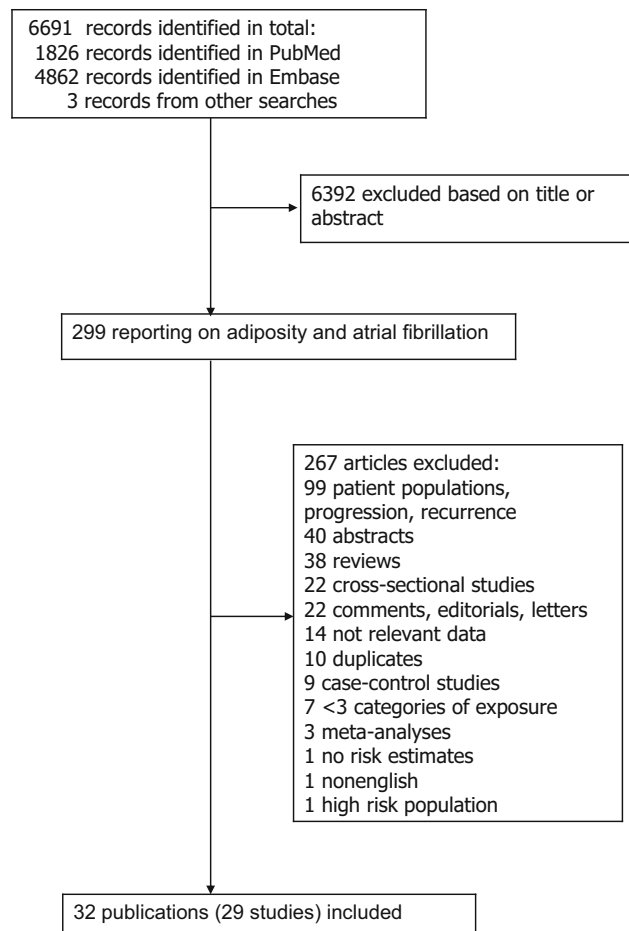


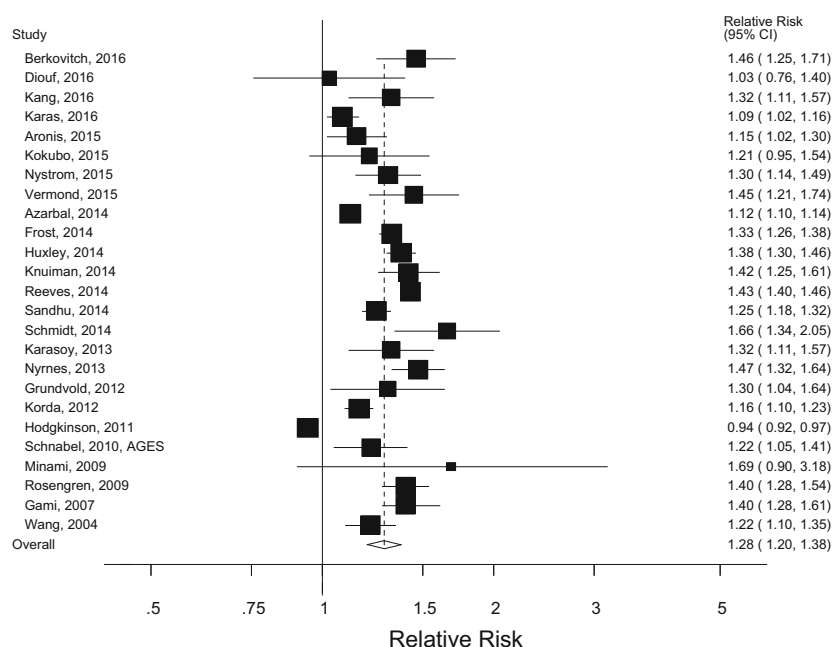
Fig. 1 Flow-chart of study selection

atrial fibrillation, thus it was not possible to conduct meta-analyses for these measures [52]. In addition, only one study reported on BMI and mortality from atrial fibrillation, thus the study was excluded from the main analysis, but it was included in a sensitivity analysis [54]. Fourteen studies were from Europe, eight were from the USA, four were from Asia, and three were from Australia (Supplementary Table 4).

Body mass index

Twenty-five prospective studies (25 publications) [18–21, 23–34, 36–40, 42, 55–57] including two nested case–control studies (were included in the dose–response analysis of BMI and atrial fibrillation incidence and included 83,006 incident cases among 2,405,381 participants. The summary RR for a 5 unit increment in BMI was 1.28 (95% confidence interval: 1.20–1.38, $I^2 = 97%$, $p_{\text{heterogeneity}} < 0.0001$; Fig. 2a, Supplementary Table 7), and it was similar when stratified by gender, but the heterogeneity was lower among men ($I^2 = 37%$) compared to women ($I^2 = 98%$; Table 1). All but one of the studies

A Body mass index and atrial fibrillation, linear dose-response analysis, per 5 BMI units



B Body mass index and atrial fibrillation, nonlinear dose-response analysis

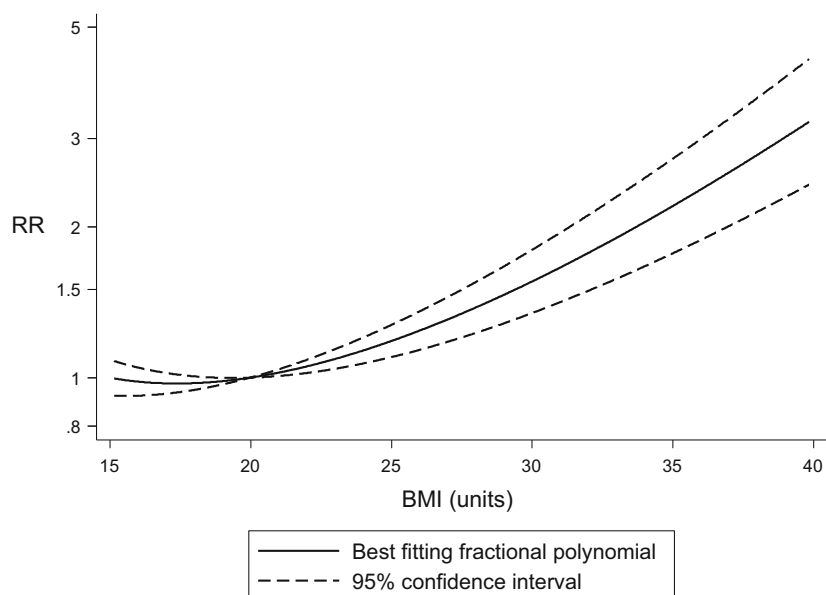


Fig. 2 BMI and atrial fibrillation, linear and nonlinear dose-response analysis

found increased risk, but the strength of the association differed between studies. In sensitivity analyses excluding the most influential studies, the summary RR ranged from 1.27 (95% CI: 1.18–1.37) when excluding the Danish Military Conscripts study [28] to 1.30 (95% CI: 1.23–1.38) when excluding the UK General Practice Research Database Study [20]. There was no indication of publication

bias with Egger's test, $p = 0.31$, or with Begg's test, $p = 0.44$, however, by inspection of the funnel plot there was some evidence of asymmetry with potentially smaller negative studies missing (Supplementary Fig. 1). There was evidence of a nonlinear association between BMI and atrial fibrillation, $p_{\text{nonlinearity}} < 0.0001$ (Fig. 2b, Supplementary Table 5) with a steeper increase in risk at higher

Table 1 Subgroup analyses of BMI and atrial fibrillation

		BMI				
		<i>n</i>	RR (95% CI)	<i>I</i> ^a (%)	<i>P</i> _h ^b	<i>P</i> _h ^c
All studies		25	1.28 (1.20–1.38)	96.8	<0.0001	
<i>Sex</i>						
Men		9	1.39 (1.30–1.48)	37.2	0.12	0.05/0.21
Women		7	1.30 (1.14–1.48)	98.1	<0.0001	
Men and women		11	1.25 (1.11–1.39)	94.3	<0.0001	
<i>Assessment of weight/height</i>						
Measured		19	1.27 (1.18–1.37)	95.2	<0.0001	0.66
Self-reported		4	1.28 (1.13–1.45)	94.9	<0.0001	
Not available		2	1.41 (1.26–1.58)	0	0.57	
<i>Duration of follow-up</i>						
<5 years		3	1.28 (1.12–1.47)	78.2	0.01	0.70
5 ≤ 10 years		7	1.37 (1.27–1.47)	38.8	0.13	
10 ≤ 15 years		8	1.23 (1.13–1.33)	91.0	<0.0001	
15 ≤ 20 years		3	1.33 (1.23–1.44)	72.3	0.03	
≥20 years		4	1.29 (0.96–1.73)	96.8	<0.0001	
<i>Geographic location</i>						
Europe		10	1.34 (1.16–1.56)	98.5	<0.0001	0.47
America		8	1.22 (1.14–1.31)	89.8	<0.0001	
Australia		3	1.22 (1.04–1.44)	78.1	0.01	
Asia		4	1.37 (1.23–1.52)	0	0.53	
<i>Number of cases</i>						
Cases < 250		5	1.38 (1.22–1.57)	43.4	0.13	0.10
Cases 250 ≤ 1000		10	1.32 (1.24–1.40)	47.2	0.05	
Cases ≥ 1000		10	1.23 (1.11–1.36)	98.7	<0.0001	
<i>Study quality</i>						
0–3		0				0.92
4–6		3	1.29 (1.08–1.54)	78.3	0.01	
7–9		22	1.28 (1.19–1.38)	97.2	<0.0001	
<i>Adjustment for confounders</i>						
Age	Yes	23	1.27 (1.18–1.37)	97.0	<0.0001	0.24
	No	2	1.45 (1.15–1.83)	71.8	0.06	
Smoking	Yes	14	1.21 (1.11–1.32)	98.1	<0.0001	0.01
	No	11	1.40 (1.34–1.47)	0	0.56	
Alcohol	Yes	12	1.26 (1.11–1.42)	98.2	<0.0001	0.53
	No	13	1.30 (1.21–1.40)	86.1	<0.0001	
Physical activity	Yes	10	1.30 (1.18–1.43)	97.2	<0.0001	0.66
	No	15	1.28 (1.16–1.42)	94.3	<0.0001	
<i>Adjustment for potential intermediates</i>						
Hypertension	Yes	11	1.24 (1.13–1.35)	96.3	<0.0001	0.18
	No	14	1.33 (1.23–1.43)	88.0	<0.0001	
Blood pressure	Yes	7	1.26 (1.17–1.35)	32.4	0.18	0.76
	No	18	1.29 (1.19–1.40)	97.7	<0.0001	
Cholesterol	Yes	6	1.28 (1.15–1.43)	93.6	<0.0001	0.99
	No	19	1.29 (1.17–1.42)	97.2	<0.0001	
Diabetes mellitus	Yes	11	1.24 (1.14–1.36)	96.6	<0.0001	0.29
	No	14	1.32 (1.22–1.42)	88.2	<0.0001	

Table 1 continued

		BMI				
		<i>n</i>	RR (95% CI)	<i>I</i> ^a (%)	<i>P</i> _h ^b	<i>P</i> _h ^c
Coronary heart disease	Yes	13	1.27 (1.16–1.38)	96.3	<0.0001	0.58
	No	12	1.30 (1.20–1.41)	90.6	<0.0001	
Heart failure	Yes	8	1.18 (1.06–1.31)	96.7	<0.0001	0.02
	No	17	1.33 (1.26–1.41)	86.8	<0.0001	
Left ventricular hypertrophy	Yes	2	1.19 (1.10–1.28)	0	0.48	0.39
	No	23	1.29 (1.20–1.39)	97.1	<0.0001	

n denotes the number of studies

^a *P* for heterogeneity within each subgroup

^b *P* for heterogeneity between subgroups

^c *P* for heterogeneity between men and women (excluding men/women combined)

BMI values. In a sensitivity analysis, one study of BMI and atrial fibrillation mortality [54] was included in the analysis, but the results remained similar, summary RR = 1.29 (95% CI: 1.20–1.38, $I^2 = 97%$, $p_{\text{heterogeneity}} < 0.0001$) per 5 BMI units.

Waist circumference

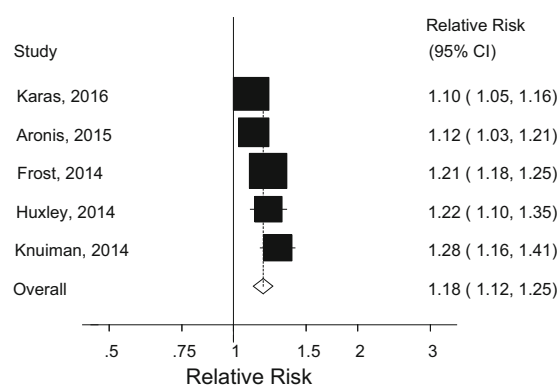
Five prospective studies (5 publications) [26, 29–32] were included in the analysis of waist circumference and risk of atrial fibrillation incidence and included 6120 cases among 80,752 participants. Three studies were from the USA, one from Denmark and one from Australia (Supplementary Table 4). The summary RR for a 10 cm increase in waist circumference was 1.18 (95% CI: 1.12–1.25, $I^2 = 73%$, $p_{\text{heterogeneity}} = 0.005$) (Fig. 3a, Supplementary Table 7). The summary RR ranged from 1.16 (95% CI: 1.10–1.23) when the Busselton Health Study [29] was excluded to 1.20 (95% CI: 1.15–1.26) when the Cardiovascular Health Study [32] was excluded. There was no evidence of publication bias with Egger's test, $p = 0.85$ or Begg's test, $p = 0.99$, although the number of studies was limited. There was no evidence of a nonlinear association between waist circumference and atrial fibrillation incidence ($p_{\text{nonlinearity}} = 0.09$; Fig. 3b, Supplementary Table 6).

Waist-to-hip ratio, hip circumference, weight, body fat mass, body fat percentage, pericardial fat, intrathoracic fat, and abdominal visceral fat.

Four prospective studies (4 publications) [29, 30, 32, 33] were included in the analysis of waist-to-hip ratio and risk of atrial fibrillation (4259 cases and 67,837 participants) and the summary RR for a 0.1 unit increment in waist-to-hip ratio was 1.09 (95% CI: 1.02–1.16, $I^2 = 44%$, $p_{\text{heterogeneity}} = 0.15$) (Fig. 4a, Supplementary Table 7).

Three prospective studies (3 publications) [30, 32, 33] were included in the analysis of hip circumference and risk

A Waist circumference and atrial fibrillation, linear dose-response analysis, per 10 cm



B Waist circumference and atrial fibrillation, nonlinear dose-response analysis

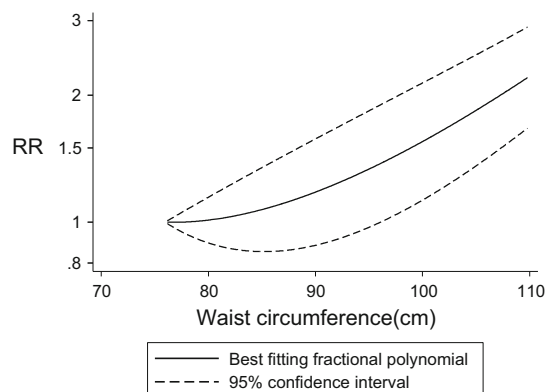


Fig. 3 Waist circumference and atrial fibrillation, linear and nonlinear dose-response analysis

of atrial fibrillation (3916 cases and 63,570 participants) and the summary RR for a 10 cm increase in hip circumference was 1.32 (95% CI: 1.16–1.51, $I^2 = 91%$, $p_{\text{heterogeneity}} < 0.0001$; Fig. 4b, Supplementary Table 7).

Four prospective studies (3 publications) [29, 30, 32, 33] were included in the analysis of total body fat mass and atrial fibrillation (5037 cases and 71,098 participants), and

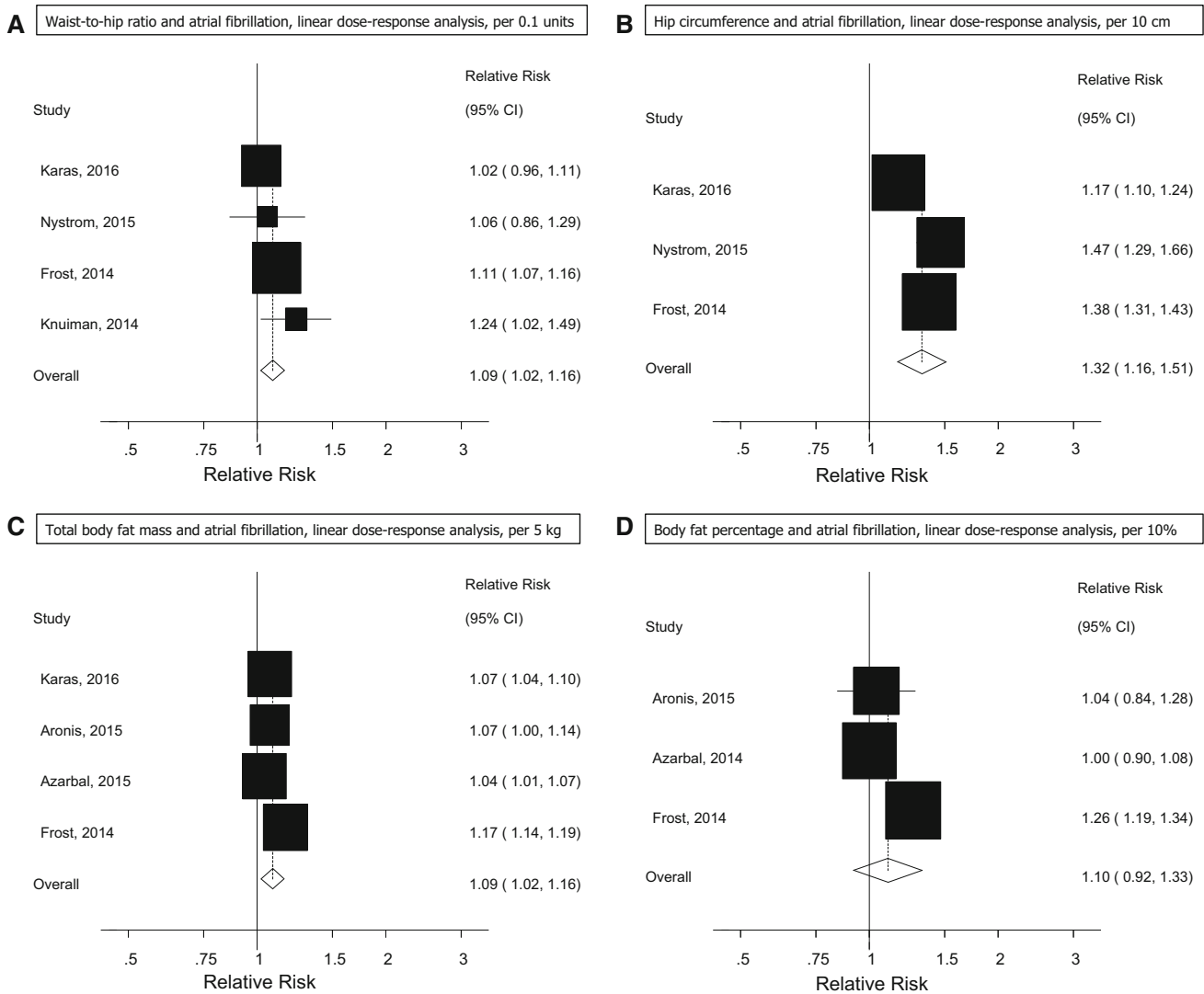


Fig. 4 Waist-to-hip ratio, hip circumference, total body fat mass, and body fat percentage and atrial fibrillation

the summary RR for a 5 kg increase in body fat mass was 1.09 (95% CI: 1.02–1.16, $I^2 = 94%$, $p_{\text{heterogeneity}} < 0.0001$) (Fig. 4c, Supplementary Table 7).

Three prospective studies (3 publications) [29, 30, 33] were included in the analysis of body fat percentage and risk of atrial fibrillation (2952 cases and 57,990 participants) and the summary RR per 10% increase in fat percentage was 1.10 (95% CI: 0.92–1.33, $I^2 = 90%$, $p_{\text{heterogeneity}} < 0.0001$) (Fig. 4d, Supplementary Table 7).

Ten prospective studies (6 publications) [30, 32, 33, 53, 58, 59] were included in the analysis of weight and the risk of atrial fibrillation (7237 cases and 132,006 participants) and the summary RR for a 5 kg increment in weight was 1.10 (95% CI: 1.08–1.13, $I^2 = 74%$, $p_{\text{heterogeneity}} < 0.0001$) (Fig. 5a, Supplementary Table 7). There was no evidence of publication bias with Egger’s test, $p = 0.52$, or Begg’s test, $p = 0.59$.

Two prospective studies [23, 26] were included in the analysis of weight gain and the risk of atrial fibrillation (3028 cases and 21,122 participants) and the summary RR was 1.08 (95% CI: 0.97–1.19, $I^2 = 86%$, $p_{\text{heterogeneity}} = 0.007$) (Fig. 5b) per 5% increase in weight gain. Only one study reported on pericardial fat, intrathoracic fat, abdominal visceral fat and the risk of atrial fibrillation and found hazard ratios of 1.13 (95% CI: 0.99–1.30), 1.19 (95% CI: 1.01–1.40), 1.09 (95% CI: 0.93–1.28), respectively [52].

Subgroup and sensitivity analyses and study quality

The positive association between BMI, and risk of atrial fibrillation persisted in almost all subgroup analyses defined by gender, assessment of weight and height, duration of follow-up, geographic location, number of cases, study quality and adjustment for confounding and potential

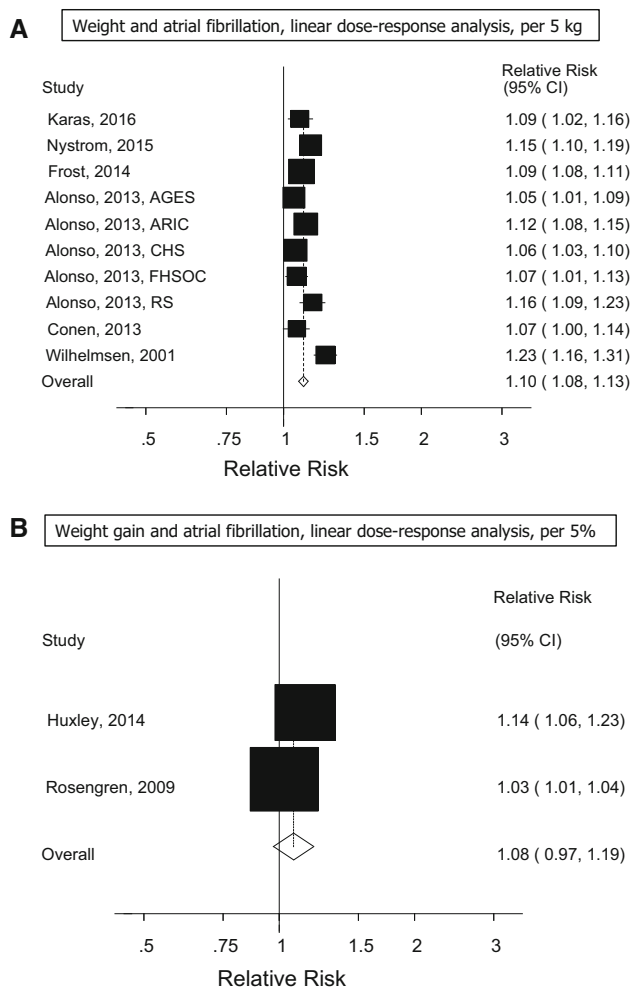


Fig. 5 Weight and weight change and atrial fibrillation

intermediate factors and there was little evidence of heterogeneity between any of these subgroups with meta-regression analyses (Table 1). In further subgroup analyses of two studies that reported data stratified by ethnicity [31, 37], the summary RR per 5 BMI units was 1.14 (95% CI: 1.06–1.22) among Caucasians and 1.23 (95% CI: 1.09–1.39) for African Americans, with no significant heterogeneity between subgroups, $p = 0.39$. When the studies of BMI and atrial fibrillation were stratified by study design, the summary RR was 1.15 (95% CI: 0.67–1.98, $I^2 = 69.5\%$) for the nested case–control studies and 1.30 (95% CI: 1.23–1.38, $I^2 = 94.3\%$) for the cohort studies. Study quality was high with a mean (median) score of 7.7 (8) out of 9 points in the analysis of BMI and atrial fibrillation.

Discussion

This is to our knowledge the first meta-analysis to assess multiple adiposity measures in relation to risk of atrial fibrillation. There was a 28% increase in the relative risk

per 5 units increase in BMI, a 18% increase in relative risk per 10 cm increase in waist circumference, a 9% increase in the relative risk per 0.1 unit increase in waist-to-hip ratio, a 32% increase in relative risk per 10 cm increase in hip circumference, a 9% increase in the relative risk per 5 kg increase in body fat mass, and a 10% increase in the relative risk per 5 kg increase in body weight, but no significant association was observed for body fat percentage or weight gain, although the number of studies was very low in these analyses. There was evidence of a nonlinear association between BMI and atrial fibrillation, with a slightly steeper association at higher BMI levels, however, there was evidence of increased risk even within the normal BMI range (22–24) compared to a BMI of around 20, although the increased risk was most pronounced in the obese and severely obese BMI ranges. The association between waist circumference and atrial fibrillation was approximately linear. The positive association between BMI and atrial fibrillation was observed across all geographic locations and both in Caucasians and African Americans, suggesting that adiposity is a risk factor for atrial fibrillation across populations.

The current findings are consistent with a previous meta-analysis of 5 cohort studies which found a 39 and 87% increase in the relative risk of atrial fibrillation among overweight and obese, respectively, compared to normal weight subjects [35]. However, the current analysis has a much larger number of studies and cases and participants (25 studies with 83,006 incident cases among 2,405,381 participants compared to 5 studies with 2114 cases and 78,602 participants) and thus provides a much more robust estimate of the association, in addition to a more comprehensive assessment of different adiposity measures in relation to risk of atrial fibrillation. Although a recent randomized trial did not find a statistically significant reduction in risk of atrial fibrillation among individuals with type 2 diabetes with a weight loss intervention, the study may have had too low power to detect a moderate reduction in risk [60]. The hazard ratio for the highest quintile of weight loss was 0.70 (95% CI: 0.41–1.18), thus a moderate reduction in risk cannot be excluded based on this trial. Another recent study of obese patients undergoing bariatric surgery found a reduced risk of developing atrial fibrillation with a hazard ratio of 0.71 (95% CI: 0.60–0.83) compared to the control group, providing additional evidence that adiposity is related to increased risk of atrial fibrillation [61]. Our findings of an increased risk of atrial fibrillation with higher hip circumference is somewhat in contrast to previous studies that have found an inverse association between hip circumference and cardiovascular disease [62], however, the inverse associations were only observed after further adjustment for BMI and waist circumference while none of the studies in the current

meta-analysis made further adjustments for BMI and waist circumference. Further studies are therefore needed to clarify whether hip circumference, waist circumference and BMI are independently associated with atrial fibrillation.

Our meta-analysis has some limitations that need to be mentioned. Confounding by other risk factors may have influenced the results. However, the association between BMI and atrial fibrillation persisted in subgroup analyses when studies were stratified by whether they adjusted for confounding factors such as age, smoking, alcohol, and physical activity. In addition, the association persisted among studies that adjusted for potential intermediates including hypertension, blood pressure, serum cholesterol, diabetes, coronary heart disease, heart failure, and left ventricular hypertrophy. There was some evidence of heterogeneity between the subgroups of studies that adjusted for heart failure, with weaker, but still significant associations among studies with such adjustment. This could indicate that part of the association between adiposity and atrial fibrillation may be mediated by heart failure. This is consistent with our previous finding of an increased risk of heart failure related to both general and abdominal adiposity [7] and with the increased risk of atrial fibrillation among patients with heart failure [53]. Although the heterogeneity between studies was high, this appeared to be largely due to different effect sizes between studies, rather than differences in the direction of the association, as all but one study found a positive association. Exclusion of the study which showed an inverse association in the linear dose–response analysis did not substantially reduce the heterogeneity.

Measurements of weight, height, waist and hip circumferences may have been affected by measurement errors, however, the association for BMI was similar among studies that used measured weight and height compared to those that used self-reported weight and height. Validation studies have reported high correlations between self-reported and measured anthropometric measures [63–66]. BMI is an imperfect measure of body fatness as it does not distinguish between body fat and muscle mass. However, studies have shown high correlations between BMI and waist measures and body fat as measured by dual-energy X-ray absorptiometry (DXA) [67, 68]. Importantly, the association between adiposity and atrial fibrillation was in the direction of increased risk for all adiposity measures analysed, and the association with body fat mass (measured by DXA) did not appear to be stronger than that for BMI or waist circumference, supporting the use of these measures for the measurement of adiposity and for prediction of atrial fibrillation. Although publication bias or small study bias can affect the findings of meta-analyses of published literature, we found no evidence of such bias with Egger's or Begg's test. However, power was low for these tests in

the analyses apart from BMI and weight because the number of studies was low.

Several potential mechanisms could explain an association between body fatness and risk of atrial fibrillation. Adiposity is associated with increased risk of hypertension [2], insulin resistance [69], diabetes [70], obstructive sleep apnea [71], coronary heart disease [72], and heart failure [7], which are established risk factors for atrial fibrillation [53, 73, 74]. Adiposity is associated with increased risk of left ventricular hypertrophy [75–77] and left atrial size [78, 79], and the latter may be due to hypertension, volume overload, left ventricular diastolic abnormalities, autonomic dysfunction and enhanced neurohormonal activation [80, 81]. In an experimental animal study weight gain resulted in atrial remodeling and increased atrial volumes, left atrial and systemic pressures, ventricular mass, pericardial fat volumes, increased atrial interstitial fibrosis, inflammation, myocardial lipid accumulation, and conduction abnormalities with slowing of atrial conduction and increased conduction heterogeneity [82]. Adiposity is related to low-grade inflammation [83, 84] which is strongly associated with atrial fibrillation [85]. Overweight and obesity is also related to greater epicardial fat thickness [86–88] which has been associated with alterations in atrial electrophysiology [89] and risk of atrial fibrillation [90, 91]. The findings of a recent Mendelian Randomisation study of genetic obesity and atrial fibrillation is consistent with a causal interpretation of the positive association found in the current meta-analysis between adiposity and atrial fibrillation [92].

Our meta-analysis has several strengths including the prospective design of the included studies which avoids recall bias and reduces the possibility for selection bias, the large number of cohort studies with >83,000 cases and >2.4 million participants in the BMI analysis which provided statistical power to detect moderate associations, the detailed dose–response analyses which clarified the shape of the dose–response relationship, the observation of a similar association between BMI and atrial fibrillation in different geographic regions, and robustness of the findings in multiple subgroup analyses as well as the high study quality of the included studies.

The findings have important clinical implications for the prevention of atrial fibrillation as a previous meta-analysis only analysed BMI, but not other fat measures in relation to the risk of atrial fibrillation [35], and have not assessed the dose–response relationship between adiposity and atrial fibrillation in as much detail as the current analysis. In addition, we found in subgroup analyses that higher BMI was associated with increased risk of atrial fibrillation in studies from Europe, North America, Australia and Asia, as well as in Caucasian and African American participants suggesting that avoidance of excess weight is important

across populations. The current analysis suggests that both general and abdominal adiposity measures as well as increased hip circumference and total body fat mass is related to increased risk of atrial fibrillation and that being relatively slim as assessed by BMI, waist circumference and other adiposity measures may confer the lowest risk of atrial fibrillation. However, to what degree different fat measures independently of each other predict atrial fibrillation risk is not clear from the current data as few studies reported mutually adjusted results, but this requires further study. Because of the moderate number of studies in the analyses of other adiposity measures than BMI and weight further studies are needed of these measures. These findings have important public health implications because of the increasing prevalence of overweight and obesity worldwide [1] and because of the consistency of the results across populations. Thus if current trends continue unabated it might contribute to an increased incidence of atrial fibrillation and associated complications globally [16].

In conclusion, our findings confirm that overweight, obesity, abdominal fatness and high body fat mass increase the risk of atrial fibrillation.

Acknowledgements This work has been supported by funding from the Liaison Committee between the Central Norway Regional Health Authority (RHA) and the Norwegian University of Science and Technology (NTNU) and the Imperial College National Institute of Health Research (NIHR) Biomedical Research Centre (BRC). The study sponsor had no role in the study design, collection of data, analysis, and interpretation of data. D. Aune takes primary responsibility for the integrity of the data and the accuracy of the data analysis. We thank Darren C. Greenwood (Biostatistics Unit, Centre for Epidemiology and Biostatistics, University of Leeds, Leeds, United Kingdom) for providing the Stata code for the nonlinear dose–response analysis.

Author's contributions Conceived and designed the research: DA, TN, ST, LJV. Acquired the data: DA, AS. Analyzed and interpreted the data: DA, AS, SS, TN, IJ, PR, ST, ER, LJV. Performed statistical analysis: DA. Handled funding and supervision: LJV, ST. Drafted the manuscript: DA, AS. Made critical revision of the manuscript for intellectual content: DA, AS, SS, TN, IJ, PR, ST, ER, LJV.

Open Access This article is distributed under the terms of the Creative Commons Attribution 4.0 International License (<http://creativecommons.org/licenses/by/4.0/>), which permits unrestricted use, distribution, and reproduction in any medium, provided you give appropriate credit to the original author(s) and the source, provide a link to the Creative Commons license, and indicate if changes were made.

References

1. Finucane MM, Stevens GA, Cowan MJ, et al. National, regional, and global trends in body-mass index since 1980: systematic analysis of health examination surveys and epidemiological studies with 960 country-years and 9.1 million participants. *Lancet*. 2011;377:557–67.
2. Guh DP, Zhang W, Bansback N, Amarsi Z, Birmingham CL, Anis AH. The incidence of co-morbidities related to obesity and overweight: a systematic review and meta-analysis. *BMC Public Health*. 2009;9:88.
3. Aune D, Norat T, Vatten LJ. Body mass index, abdominal fatness and the risk of gallbladder disease. *Eur J Epidemiol*. 2015;30:1009–19.
4. Whitlock G, Lewington S, Sherliker P, et al. Body-mass index and cause-specific mortality in 900,000 adults: collaborative analyses of 57 prospective studies. *Lancet*. 2009;373:1083–96.
5. Aune D, Sen A, Prasad M, et al. BMI and all cause mortality: systematic review and non-linear dose–response meta-analysis of 230 cohort studies with 3.74 million deaths among 30.3 million participants. *BMJ*. 2016;353:i2156.
6. Global BMI Mortality Collaboration. Body-mass index and all-cause mortality: individual-participant-data meta-analysis of 239 prospective studies in four continents. *Lancet*. 2016;388:776–86.
7. Aune D, Sen A, Norat T, et al. Body mass index, abdominal fatness and heart failure incidence and mortality: a systematic review and dose–response meta-analysis of prospective studies. *Circulation*. 2016;133:639–49.
8. World Cancer Research Fund/American Institute for Cancer Research. Food, nutrition, physical activity and the prevention of cancer: a global perspective. Washington: AICR; 2007.
9. Aune D, Greenwood DC, Chan DS, et al. Body mass index, abdominal fatness and pancreatic cancer risk: a systematic review and non-linear dose–response meta-analysis of prospective studies. *Ann Oncol*. 2012;23:843–52.
10. Aune D, Navarro Rosenblatt DA, Chan DS, et al. Anthropometric factors and ovarian cancer risk: a systematic review and nonlinear dose–response meta-analysis of prospective studies. *Int J Cancer*. 2014;136:1888–98.
11. Aune D, Navarro Rosenblatt DA, Chan DS, et al. Anthropometric factors and endometrial cancer risk: a systematic review and dose–response meta-analysis of prospective studies. *Ann Oncol*. 2015;26:1635–48.
12. Malik VS, Willett WC, Hu FB. Global obesity: trends, risk factors and policy implications. *Nat Rev Endocrinol*. 2013;9:13–27.
13. Go AS, Hylek EM, Phillips KA, et al. Prevalence of diagnosed atrial fibrillation in adults: national implications for rhythm management and stroke prevention: the AnTicoagulation and risk factors in atrial fibrillation (ATRIA) study. *JAMA*. 2001;285:2370–5.
14. Chugh SS, Havmoeller R, Narayanan K, et al. Worldwide epidemiology of atrial fibrillation: a global burden of disease 2010 study. *Circulation*. 2014;129:837–47.
15. GBD 2015 Disease and Injury Incidence and Prevalence Collaborators. Global, regional, and national incidence, prevalence, and years lived with disability for 310 diseases and injuries, 1990–2015: a systematic analysis for the global burden of disease study 2015. *Lancet*. 2016;388:1545–602.
16. Odutayo A, Wong CX, Hsiao AJ, Hopewell S, Altman DG, Emdin CA. Atrial fibrillation and risks of cardiovascular disease, renal disease, and death: systematic review and meta-analysis. *BMJ*. 2016;354:i4482.
17. Coyne KS, Paramore C, Grandy S, Mercader M, Reynolds M, Zimetbaum P. Assessing the direct costs of treating nonvalvular atrial fibrillation in the United States. *Value Health*. 2006;9:348–56.
18. Wang TJ, Parise H, Levy D, et al. Obesity and the risk of new-onset atrial fibrillation. *JAMA*. 2004;292:2471–7.
19. Gami AS, Hodge DO, Herges RM, et al. Obstructive sleep apnea, obesity, and the risk of incident atrial fibrillation. *J Am Coll Cardiol*. 2007;49:565–71.

20. Hodgkinson JA, Taylor CJ, Hobbs FD. Predictors of incident atrial fibrillation and influence of medications: a retrospective case-control study. *Br J Gen Pract.* 2011;61:e353-61.
21. Karasoy D, Bo JT, Hansen ML, et al. Obesity is a risk factor for atrial fibrillation among fertile young women: a nationwide cohort study. *Europace.* 2013;15:781-6.
22. Frost L, Hune LJ, Vestergaard P. Overweight and obesity as risk factors for atrial fibrillation or flutter: the Danish diet, cancer, and health study. *Am J Med.* 2005;118:489-95.
23. Rosengren A, Hauptman PJ, Lappas G, Olsson L, Wilhelmsen L, Swedberg K. Big men and atrial fibrillation: effects of body size and weight gain on risk of atrial fibrillation in men. *Eur Heart J.* 2009;30:1113-20.
24. Korda RJ, Liu B, Clements MS, et al. Prospective cohort study of body mass index and the risk of hospitalisation: findings from 246,361 participants in the 45 and up study. *Int J Obes (Lond).* 2012;37:790-9.
25. Reeves GK, Balkwill A, Cairns BJ, Green J, Beral V. Hospital admissions in relation to body mass index in UK women: a prospective cohort study. *BMC Med.* 2014;12:45.
26. Huxley RR, Misialek JR, Agarwal SK, et al. Physical activity, obesity, weight change, and risk of atrial fibrillation: the atherosclerosis risk in communities study. *Circ Arrhythm Electrophysiol.* 2014;7:620-5.
27. Sandhu RK, Conen D, Tedrow UB, et al. Predisposing factors associated with development of persistent compared with paroxysmal atrial fibrillation. *J Am Heart Assoc.* 2014;3:e000916.
28. Schmidt M, Botker HE, Pedersen L, Sorensen HT. Comparison of the frequency of atrial fibrillation in young obese versus young nonobese men undergoing examination for fitness for military service. *Am J Cardiol.* 2014;113:822-6.
29. Knuiman M, Briffa T, Divitini M, et al. A cohort study examination of established and emerging risk factors for atrial fibrillation: the Busselton health study. *Eur J Epidemiol.* 2014;29:181-90.
30. Frost L, Benjamin EJ, Fenger-Gron M, Pedersen A, Tjonneland A, Overvad K. Body fat, body fat distribution, lean body mass and atrial fibrillation and flutter. A Danish cohort study. *Obesity (Silver Spring).* 2014;22:1546-52.
31. Aronis KN, Wang N, Phillips CL, et al. Associations of obesity and body fat distribution with incident atrial fibrillation in the biracial health aging and body composition cohort of older adults. *Am Heart J.* 2015;170:498-505.
32. Karas MG, Yee LM, Biggs ML, et al. Measures of body size and composition and risk of incident atrial fibrillation in older people: the cardiovascular health study. *Am J Epidemiol.* 2016;183:998-1007.
33. Nystrom PK, Carlsson AC, Leander K, de Faire U, Hellenius ML, Gigante B. Obesity, metabolic syndrome and risk of atrial fibrillation: a Swedish, prospective cohort study. *PLoS ONE.* 2015;10:e0127111.
34. Azarbal F, Stefanick ML, Salmoirago-Blotcher E, et al. Obesity, physical activity, and their interaction in incident atrial fibrillation in postmenopausal women. *J Am Heart Assoc.* 2014;3:e001127.
35. Wanahita N, Messerli FH, Bangalore S, Gami AS, Somers VK, Steinberg JS. Atrial fibrillation and obesity—results of a meta-analysis. *Am Heart J.* 2008;155:310-5.
36. Minami M, Kobayashi Y, Toyokawa S, Inoue K, Takeshita Y. Risk factors for new-onset atrial fibrillation during routine medical checkups of Japanese male workers. *Int Heart J.* 2009;50:457-64.
37. Schnabel RB, Aspelund T, Li G, et al. Validation of an atrial fibrillation risk algorithm in whites and African Americans. *Arch Intern Med.* 2010;170:1909-17.
38. Grundvold I, Skretteberg PT, Liestol K, et al. Low heart rates predict incident atrial fibrillation in healthy middle-aged men. *Circ Arrhythm Electrophysiol.* 2013;6:726-31.
39. Nymes A, Toft I, Njolstad I, et al. Uric acid is associated with future atrial fibrillation: an 11-year follow-up of 6308 men and women—the Tromso study. *Europace.* 2014;16:320-6.
40. Vermond RA, Geelhoed B, Verweij N, et al. Incidence of atrial fibrillation and relationship with cardiovascular events, heart failure, and mortality: a community-based study from the Netherlands. *J Am Coll Cardiol.* 2015;66:1000-7.
41. Toren K, Schioler L, Soderberg M, Giang KW, Rosengren A. The association between job strain and atrial fibrillation in Swedish men. *Occup Environ Med.* 2015;72:177-80.
42. Kokubo Y, Watanabe M, Higashiyama A, et al. Interaction of Blood pressure and body mass index with risk of incident atrial fibrillation in a Japanese urban cohort: the Suita study. *Am J Hypertens.* 2015;28:1355-61.
43. Stroup DF, Berlin JA, Morton SC, et al. Meta-analysis of observational studies in epidemiology: a proposal for reporting. Meta-analysis of observational studies in epidemiology (MOOSE) group. *JAMA.* 2000;283:2008-12.
44. Wong CX, Sun MT, Mahajan R, et al. Obesity and the risk of incident, post-operative, and post-ablation atrial fibrillation: a meta-analysis of 626,603 individuals in 51 studies. *JACC.* 2015;. doi:10.1016/j.jacc.2015.04.004.
45. Wells G, Shea B, O'Connell D, et al. The Newcastle-Ottawa scale (NOS) for assessing the quality of nonrandomised studies in meta-analyses. http://www.ohri.ca/programs/clinical_epidemiology/oxford.asp. Accessed 13 Aug 2014.
46. DerSimonian R, Laird N. Meta-analysis in clinical trials. *Control Clin Trials.* 1986;7:177-88.
47. Greenland S, Longnecker MP. Methods for trend estimation from summarized dose-response data, with applications to meta-analysis. *Am J Epidemiol.* 1992;135:1301-9.
48. Bagnardi V, Zambon A, Quatto P, Corrao G. Flexible meta-regression functions for modeling aggregate dose-response data, with an application to alcohol and mortality. *Am J Epidemiol.* 2004;159:1077-86.
49. Higgins JP, Thompson SG. Quantifying heterogeneity in a meta-analysis. *Stat Med.* 2002;21:1539-58.
50. Egger M, Davey SG, Schneider M, Minder C. Bias in meta-analysis detected by a simple, graphical test. *BMJ.* 1997;315:629-34.
51. Begg CB, Mazumdar M. Operating characteristics of a rank correlation test for publication bias. *Biometrics.* 1994;50:1088-101.
52. Lee JJ, Yin X, Hoffmann U, Fox CS, Benjamin EJ. Relation of pericardial fat, intrathoracic fat, and abdominal visceral fat with incident atrial fibrillation (from the Framingham heart study). *Am J Cardiol.* 2016;118:1486-92.
53. Alonso A, Krijthe BP, Aspelund T, et al. Simple risk model predicts incidence of atrial fibrillation in a racially and geographically diverse population: the CHARGE-AF consortium. *J Am Heart Assoc.* 2013;2:e000102.
54. Murphy NF, MacIntyre K, Stewart S, Hart CL, Hole D, McMurray JJ. Long-term cardiovascular consequences of obesity: 20-year follow-up of more than 15,000 middle-aged men and women (the Renfrew-Paisley study). *Eur Heart J.* 2006;27:96-106.
55. Kang SH, Choi EK, Han KD, et al. Underweight is a risk factor for atrial fibrillation: a nationwide population-based study. *Int J Cardiol.* 2016;215:449-56.
56. Diouf I, Magliano DJ, Carrington MJ, Stewart S, Shaw JE. Prevalence, incidence, risk factors and treatment of atrial fibrillation in Australia: the Australian diabetes, obesity and lifestyle (AusDiab) longitudinal, population cohort study. *Int J Cardiol.* 2016;205:127-32.

57. Berkovitch A, Kivity S, Klempfner R, et al. Body mass index and the risk of new-onset atrial fibrillation in middle-aged adults. *Am Heart J*. 2016;173:41–8.
58. Wilhelmssen L, Rosengren A, Lappas G. Hospitalizations for atrial fibrillation in the general male population: morbidity and risk factors. *J Intern Med*. 2001;250:382–9.
59. Conen D, Glynn RJ, Sandhu RK, Tedrow UB, Albert CM. Risk factors for incident atrial fibrillation with and without left atrial enlargement in women. *Int J Cardiol*. 2013;168:1894–9.
60. Alonso A, Bahnson JL, Gaussoin SA, et al. Effect of an intensive lifestyle intervention on atrial fibrillation risk in individuals with type 2 diabetes: the look AHEAD randomized trial. *Am Heart J*. 2015;170:770–7.
61. Jamaly S, Carlsson L, Peltonen M, Jacobson P, Sjostrom L, Karason K. Bariatric surgery and the risk of new-onset atrial fibrillation in Swedish obese subjects. *J Am Coll Cardiol*. 2016;68:2497–504.
62. Zhang C, Rexrode KM, van Dam RM, Li TY, Hu FB. Abdominal obesity and the risk of all-cause, cardiovascular, and cancer mortality: sixteen years of follow-up in US women. *Circulation*. 2008;117:1658–67.
63. Rimm EB, Stampfer MJ, Colditz GA, Chute CG, Litin LB, Willett WC. Validity of self-reported waist and hip circumferences in men and women. *Epidemiology*. 1990;1:466–73.
64. Bes-Rastrollo M, Sabate J, Jaceldo-Siegl K, Fraser GE. Validation of self-reported anthropometrics in the adventist health study 2. *BMC Public Health*. 2011;11:213.
65. Weaver TW, Kushi LH, McGovern PG, et al. Validation study of self-reported measures of fat distribution. *Int J Obes Relat Metab Disord*. 1996;20:644–50.
66. Spencer EA, Appleby PN, Davey GK, Key TJ. Validity of self-reported height and weight in 4808 EPIC-Oxford participants. *Public Health Nutr*. 2002;5:561–5.
67. Flegal KM, Shepherd JA, Looker AC, et al. Comparisons of percentage body fat, body mass index, waist circumference, and waist-stature ratio in adults. *Am J Clin Nutr*. 2009;89:500–8.
68. Blew RM, Sardinha LB, Milliken LA, et al. Assessing the validity of body mass index standards in early postmenopausal women. *Obes Res*. 2002;10:799–808.
69. Everson SA, Goldberg DE, Helmrich SP, et al. Weight gain and the risk of developing insulin resistance syndrome. *Diabetes Care*. 1998;21:1637–43.
70. Abdullah A, Peeters A, de Court M, Stoelwinder J. The magnitude of association between overweight and obesity and the risk of diabetes: a meta-analysis of prospective cohort studies. *Diabetes Res Clin Pract*. 2010;89:309–19.
71. Bazzano LA, Hu T, Bertisch SM, et al. Childhood obesity patterns and relation to middle-age sleep apnoea risk: the Bogalusa heart study. *Pediatr Obes*. 2016;11:535–42.
72. Danaei G, Lu Y, Singh GM, et al. Cardiovascular disease, chronic kidney disease, and diabetes mortality burden of cardiometabolic risk factors from 1980 to 2010: a comparative risk assessment. *Lancet Diabetes Endocrinol*. 2014;2:634–47.
73. Goudis CA, Korantzopoulos P, Ntalas IV, Kallergis EM, Ketikoglou DG. Obesity and atrial fibrillation: a comprehensive review of the pathophysiological mechanisms and links. *J Cardiol*. 2015;66:361–9.
74. Wang X, Ouyang Y, Wang Z, Zhao G, Liu L, Bi Y. Obstructive sleep apnea and risk of cardiovascular disease and all-cause mortality: a meta-analysis of prospective cohort studies. *Int J Cardiol*. 2013;169:207–14.
75. Cuspidi C, Rescaldani M, Sala C, Grassi G. Left-ventricular hypertrophy and obesity: a systematic review and meta-analysis of echocardiographic studies. *J Hypertens*. 2014;32:16–25.
76. Brady TM. The role of obesity in the development of left ventricular hypertrophy among children and adolescents. *Curr Hypertens Rep*. 2016;18:3.
77. Falkner B, DeLoach S, Keith SW, Gidding SS. High risk blood pressure and obesity increase the risk for left ventricular hypertrophy in African-American adolescents. *J Pediatr*. 2013;162:94–100.
78. Ayer JG, Almafragy HS, Patel AA, Hellyer RL, Celermajer DS. Body mass index is an independent determinant of left atrial size. *Heart Lung Circ*. 2008;17:19–24.
79. Ayer JG, Sholler GF, Celermajer DS. Left atrial size increases with body mass index in children. *Int J Cardiol*. 2010;141:61–7.
80. Pelat M, Verwaerde P, Merial C, et al. Impaired atrial M(2)-cholinoceptor function in obesity-related hypertension. *Hypertension*. 1999;34:1066–72.
81. Engeli S, Sharma AM. The renin-angiotensin system and natriuretic peptides in obesity-associated hypertension. *J Mol Med (Berl)*. 2001;79:21–9.
82. Abed HS, Samuel CS, Lau DH, et al. Obesity results in progressive atrial structural and electrical remodeling: implications for atrial fibrillation. *Heart Rhythm*. 2013;10:90–100.
83. Fontana L, Hu FB. Optimal body weight for health and longevity: bridging basic, clinical, and population research. *Aging Cell*. 2014;13:391–400.
84. Bahceci M, Gokalp D, Bahceci S, Tuzcu A, Atmaca S, Arikan S. The correlation between adiposity and adiponectin, tumor necrosis factor alpha, interleukin-6 and high sensitivity C-reactive protein levels. Is adipocyte size associated with inflammation in adults? *J Endocrinol Invest*. 2007;30:210–4.
85. Dewland TA, Vittinghoff E, Harris TB, et al. Inflammation as a mediator of the association between race and atrial fibrillation: results from the health, aging, and body composition study. *JACC Clin Electrophysiol*. 2015;1:248–55.
86. Bazzocchi A, Diano D, Vicennati V, et al. Relationships between total and regional adiposity and epicardial fat in obese women: How can dual-energy X-ray absorptiometry be associated with echocardiographic epicardial fat measurements? *Clin Obes*. 2013;3:132–40.
87. Rabkin SW. The relationship between epicardial fat and indices of obesity and the metabolic syndrome: a systematic review and meta-analysis. *Metab Syndr Relat Disord*. 2014;12:31–42.
88. Fernandez Munoz MJ, Basurto AL, Cordova PN, et al. Epicardial adipose tissue is associated with visceral fat, metabolic syndrome, and insulin resistance in menopausal women. *Rev Esp Cardiol (Engl Ed)*. 2014;67:436–41.
89. Lin YK, Chen YC, Chang SL, et al. Heart failure epicardial fat increases atrial arrhythmogenesis. *Int J Cardiol*. 2013;167:1979–83.
90. Yorgun H, Canpolat U, Aytemir K, et al. Association of epicardial and peri-atrial adiposity with the presence and severity of non-valvular atrial fibrillation. *Int J Cardiovasc Imaging*. 2015;31:649–57.
91. Iacobellis G, Zaki MC, Garcia D, Willens HJ. Epicardial fat in atrial fibrillation and heart failure. *Horm Metab Res*. 2014;46:587–90.
92. Chatterjee NA, Giulianini F, Geelhoed B et al. Genetic obesity and the risk of atrial fibrillation-causal estimates from mendelian randomization. *Circulation*. 2016. [Epub Ahead of Print].

SUPPLEMENTAL MATERIAL

Aune D, Sen A, Schlesinger S, Norat T, Janszky I, Romundstad P, Tonstad S, Riboli E, Vatten LJ. Body mass index, abdominal fatness, fat mass and the risk of atrial fibrillation: a systematic review and dose-response meta-analysis of prospective studies: *Eur J Epidemiol* 2017; DOI: [10.1007/s10654-017-0232-4](https://doi.org/10.1007/s10654-017-0232-4)

Supplementary Table 1. PubMed search

1	“body mass index”
2	BMI
3	overweight
4	obesity
5	anthropometry
6	fatness
7	“body fatness”
8	“abdominal fatness”
9	“abdominal obesity”
10	“waist circumference”
11	“waist-to-hip ratio”
12	adiposity
13	“weight gain”
14	“weight change”
15	“weight loss”
16	“atrial fibrillation”
17	“atrial flutter”
18	1 OR 2 OR 3 OR 4 OR 5 OR 6 OR 7 OR 8 OR 9 OR 10 OR 11 OR 12 OR 13 OR 14 OR 15
19	16 OR 17
20	18 AND 19

Supplementary Table 2. Embase search

1	body mass index/
2	BMI/
3	overweight/
4	obesity/
5	anthropometry/
6	fatness/
7	body fatness/
8	abdominal fatness/
9	abdominal obesity/
10	waist circumference/
11	waist-to-hip ratio/
12	adiposity/
13	weight gain/
14	weight change/
15	weight loss/
16	atrial fibrillation/
17	atrial flutter/
18	case-control
19	cohort
20	cohorts
21	prospective
22	longitudinal
23	retrospective

24	follow-up
25	cross-sectional
26	hazard ratio
27	hazard ratios
28	relative risk
29	relative risks
30	incidence rate ratio
31	incidence rate ratios
32	odds ratio
33	odds ratios
34	incidence
35	1 OR 2 OR 3 OR 4 OR 5 OR 6 OR 7 OR 8 OR 9 OR 10 OR 11 OR 12 OR 13 OR 14 OR 15
36	16 OR 17
37	18 OR 19 OR 20 OR 21 OR 22 OR 23 OR 24 OR 25 OR 26 OR 27 OR 28 OR 29 OR 30 OR 31 OR 32 OR 33 OR 34
38	35 AND 36 AND 37

Supplementary Table 3. List of excluded studies and reasons for exclusion.

Exclusion reason	Reference number
Abstract	(1-40)
Case-control study	(41-49)
Cross-sectional study	(50-71)
Duplicates	(72-81)
High risk patients	(82)
Letter, News, comments, editorial	(83-104)
Meta-analysis	(105-107)
No risk estimates	(108)
Non-English	(109)
Not relevant data	(110-123)
Patient population, progression, recurrence	(124-222)
Review	(223-260)
<3 categories of exposure	(261-267)

Reference List

1. Djousse L. Association of modifiable lifestyle factors and risk of total and cardiovascular mortality among older us male physicians. *Cardiology (Switzerland)* Conference: International Academy of Cardiology 1920;July.
2. Alonso A, Lopez FL, Mac Lehosé RF. Additive and multiplicative interactions of race with risk factors for atrial fibrillation: The Aric study. *American Journal of Epidemiology* Conference: 3rd North American Congress of Epidemiology Montreal, QC Canada Conference Start: 2011;01.

3. Grundvold I, Skretteberg PT, Kjeldsen SE, Arnesen H, Bodegard J. Physical fitness modifies the predictive impact of weight gain and body mass index for incident atrial fibrillation. *Circulation Conference: American Heart Association's Scientific Sessions* 2011;22.
4. Conen D, Glynn RJ, Sandhu RK, Tedrow UB, Albert CM. Differing risk factors for incident atrial fibrillation with and without left atrial enlargement. *Circulation Conference: American Heart Association's Scientific Sessions* 2011;22.
5. Kokubo Y, Shimizu W, Kamakura S et al. Obesity index and the risk of atrial fibrillation in an Urban Japanese cohort: The Suita study. *Circulation Conference: American Heart Association's Scientific Sessions* 2011;22.
6. Gruberg L, Parikh B, Malhotra A, Kort S. Impact of body mass index and gender on left atrial size and the presence of atrial fibrillation. *Circulation Conference: American Heart Association's Scientific Sessions* 2011;22.
7. Peng F, Lin J, Liu H. Metabolic syndrome and risk of atrial fibrillation in Chinese essential hypertensive patients. *International Journal of Cardiology Conference: World Hypertension League Regional Congress* 2011;October.
8. Sandhu RK, Conen D, Tedrow UB, Fitzgerald K, Glynn R, Albert CM. Risk factors associated with development of paroxysmal versus persistent atrial fibrillation. *Circulation Conference: American Heart Association* 2012;20.
9. Jensen PN, Thacker EL, Dublin S, Psaty BM, Heckbert SR. Racial differences in the incidence of and risk factors for atrial fibrillation in older adults: The cardiovascular health study. *Circulation Conference: Epidemiology and Prevention/Physical Activity, Nutrition and Metabolism* 2012;13.
10. Karasoy D, Gislason G, Torp-Pedersen C et al. Obesity is a powerful predictor of atrial fibrillation in fertile women. *European Heart Journal Conference: ESC Congress* 2012;August.
11. Kokubo Y, Shimizu W, Watanabe M et al. Impact of blood pressure and obesity on the risk of incident atrial fibrillation in the Suita Study: An urban cohort study. *European Heart Journal Conference: ESC Congress* 2012;August.
12. Sandhu R, Conen D, Tedrow UB, Glynn RJ, Albert CM. Risk factors associated with paroxysmal versus persistent/permanent atrial fibrillation. *European Heart Journal Conference: ESC Congress* 2012;August.
13. Karas MG, Yee L, Biggs ML et al. Central and general adiposity and risk of incident atrial fibrillation in older adults: The cardiovascular health study. *Journal of the American College of Cardiology Conference: 61th Annual Scientific Session of the American College of Cardiology and i2 Summit: Innovation in Intervention, ACC 12 Chicago, IL United States Conference Start:* 2012;27.
14. Willis BL, De FL, Radford N, Gao A, Leonard D, Berry J. Association of cardiorespiratory fitness and body mass index in midlife with atrial fibrillation in later life: The cooper center longitudinal study. *Circulation Conference: American Heart Association* 2013;26.

15. Schmidt M, Botker HE, Pedersen L, Sorensen HT. Obesity in young men and long-term risk of atrial fibrillation: 33-year follow-up of 12,850 young healthy men. *Circulation Conference: American Heart Association* 2013;26.
16. Neeland IJ, Turer A, Ayers C et al. Body fat distribution and incident cardiovascular disease in obese adults. *Circulation Conference: American Heart Association* 2013;26.
17. Pignatelli P, Pastori D, Cangemi R et al. Metabolic syndrome is an independent predictor of cardiovascular events in patients with atrial fibrillation. *Circulation Conference: American Heart Association* 2013;26.
18. Onuchina E, Solovyev O, Mochalova O, Onuchin S, Onuchina J. Risk factors of atrial fibrillation in patients with metabolic syndrome. *Journal of Diabetes Conference: 5th International Congress on Prediabetes and the Metabolic Syndrome Early Interventions for Diabetes and Dysglycaemia Surgery in the Treatment of Obesity and Diabetes Vienna Austria Conference Start: 2013;April.*
19. Grundvold I, Skretteberg PT, Liestoel K et al. Predictors of atrial fibrillation differ in men with high vs low physical fitness. *European Heart Journal Conference: European Society of Cardiology, ESC Congress* 2013;August.
20. Mahabadi AA, Lehmann N, Kalsch H et al. Epicardial adipose tissue and left atrial size as CT-derived predictors of atrial fibrillation: The heinz nixdorf recall study. *European Heart Journal Conference: European Society of Cardiology, ESC Congress* 2013;August.
21. Jamaly S, Jacobson P, Peltonen M, Carlsson L, Sjostrom L, Karason K. Obesity surgery and incidence of atrial fibrillation. *European Heart Journal Conference: European Society of Cardiology, ESC Congress* 2013;August.
22. Kelsey AM. Atrial fibrillation in postmenopausal women: Risk factors, diagnosis, and management. *Menopause Conference: 25th Annual Meeting of the North American Menopause Society, NAMS* 2014;December.
23. Kokubo Y, Kobayashi T, Watanbe M et al. A combination of metabolic syndrome components increased the risk of incident atrial fibrillation in a general urban cohort: The Suita study. *Hypertension Conference: American Heart Association's High Blood Pressure Research* 2014;November.
24. Vermond RA, Geelhoed B, Verweij N et al. Incidence of atrial fibrillation and relation with cardiovascular events, heart failure and mortality in a european community-based study-data of prevend. *Circulation Conference: American Heart Association's* 2014;25.
25. Berkovitch A, Kivity S, Klempfner R et al. Weight reduction is associated with reduced risk for atrial fibrillation in apparently healthy middle-age men and women. *European Heart Journal Conference: European Society of Cardiology, ESC Congress* 2014;01.
26. Grundvold I, Bodegard J, Nilsson PM et al. Body mass index and changes in weight are associated with risk of atrial fibrillation and cardiovascular mortality: A longitudinal cohort study of 7,169 patients with newly diagnosed type 2 diabetes.

European Heart Journal Conference: European Society of Cardiology, ESC Congress 2014;01.

27. Kokubo Y, Kobayashi T, Watanabe M et al. Combination of type 2 diabetes and overweight is linked to an increased incidence of atrial fibrillation in a general urban cohort population. European Heart Journal Conference: European Society of Cardiology, ESC Congress 2014;01.
28. Bulbulia R, Sherliker P, Clack R, Halliday A, Peto R, Lewington S. Adiposity, systolic blood pressure, smoking and atrial fibrillation: Analyses of 2.3 million us adults attending cardiovascular screening. Circulation Conference: American Heart Association's 2015;10.
29. Kokubo Y, Watanabe M, Higashiyama A et al. A risk score for the prediction of atrial fibrillation in the Japanese community: The Suita study. Circulation Conference: American Heart Association's 2015;10.
30. Nilsson PM, Zoller B, Sundquist J, Sundquist K. Predictors of severe obesity and associated morbidity in the Malmo Preventive Project: A population-based cohort study. Diabetologia Conference: 51st Annual Meeting of the European Association for the Study of Diabetes, EASD 2015;September.
31. Andersen K, Rasmussen F, Neovius M, Tynelius P, Sundstrom J. Anthropometric measures and risk of atrial fibrillation-a cohort study of 1.2 million young men. European Heart Journal Conference: European Society of Cardiology, ESC Congress 2015;01.
32. Nakamura S, Adachi H, Enomoto M et al. The trend of atrial fibrillation in the elderly men for 30 years in a japanese general population. Journal of Hypertension Conference: 25th European Meeting on Hypertension and Cardiovascular Protection, ESH 2015;June.
33. Aronis KN, Wang N, Phillips C et al. Associations of adiposity and atrial fibrillation in older adults: The health abc study. Circulation Conference: American Heart Association's Epidemiology and Prevention/Lifestyle and Cardiometabolic Health 2015;10.
34. Shulman EH, Kargoli F, Hoch E et al. Body mass index and the development of atrial fibrillation in hispanics, blacks and non-hispanic whites. Journal of the American College of Cardiology Conference: 65th Annual Scientific Session of the American College of Cardiology and i2 Summit: Innovation in Intervention, ACC 16 Chicago, IL United States Conference Start: 2016;05.
35. Baek Y, Yang P-S, Kim T-H et al. Associations of abdominal obesity and new onset atrial fibrillation in general population: A nationwide cohort study in Korea. Journal of the American College of Cardiology Conference: 65th Annual Scientific Session of the American College of Cardiology and i2 Summit: Innovation in Intervention, ACC 16 Chicago, IL United States Conference Start: 2016;05.
36. Heckbert SR, Wiggins KL, Blackshear C et al. Pericardial fat volume is associated with incident atrial fibrillation: The multi-ethnic study of atherosclerosis and the

jackson heart study. Circulation Conference: American Heart Association's Epidemiology and Prevention/Lifestyle and Cardiometabolic Health 2016;01.

37. Anderson JL, Knight S, May HT, Bunch TJ, Lappe DL, Muhlestein JB. Prevalence of atrial fibrillation (AF) risk factors and lone AF in a general healthcare population. Circulation Conference: American Heart Association 2012;20.
38. Wong CX, Sun MT, Mahajan R et al. Obesity and the risk of atrial fibrillation: A systematic review and meta-analysis. Circulation Conference: American Heart Association 2012;20.
39. Murakami C, Nagai T, Akira F et al. Total epicardial fat volume is associated with early recurrence of atrial fibrillation after catheter ablation. Journal of the American College of Cardiology Conference: 61th Annual Scientific Session of the American College of Cardiology and i2 Summit: Innovation in Intervention, ACC 12 Chicago, IL United States Conference Start: 2012;27.
40. White T, Cameron J, Mottram P. Weight confirmed as a risk factor for atrial fibrillation in 39,023 subjects. Heart Lung and Circulation Conference: Cardiac Society of Australia and New Zealand Annual Scientific Meeting and the International Society for Heart Research Australasian Section Annual Scientific Meeting 2015;2015.
41. Wong CX, Abed HS, Molaee P et al. Pericardial fat is associated with atrial fibrillation severity and ablation outcome. J Am Coll Cardiol 2011;57:1745-51.
42. Dublin S, French B, Glazer NL et al. Risk of new-onset atrial fibrillation in relation to body mass index. Arch Intern Med 2006;166:2322-8.
43. Al Chekatie MO, Welles CC, Metoyer R et al. Pericardial fat is independently associated with human atrial fibrillation. J Am Coll Cardiol 2010;56:784-8.
44. Batal O, Schoenhagen P, Shao M et al. Left atrial epicardial adiposity and atrial fibrillation. Circ Arrhythm Electrophysiol 2010;3:230-6.
45. Tsao H-M, Hu W-C, Wu M-H, Chen S-A. Abundance and distribution of epicardial adipose tissue surrounding the left atrium in patients with atrial fibrillation. Heart Rhythm Conference: 31st Annual Scientific Sessions of the Heart Rhythm Society, Heart Rhythm 2010;May.
46. Calvo N, Ramos P, Montserrat S et al. Emerging risk factors and the dose-response relationship between physical activity and lone atrial fibrillation: a prospective case-control study. Europace 2015.
47. Abed HS, Wong CX, Brooks AG et al. Periatrial fat volume is predictive of atrial fibrillation severity. Heart Rhythm Conference: 31st Annual Scientific Sessions of the Heart Rhythm Society, Heart Rhythm 2010;May.
48. Al Chekatie MON, Welles CC, Metoyer R et al. Pericardial fat is independently associated with human atrial fibrillation. Heart Rhythm Conference: 31st Annual Scientific Sessions of the Heart Rhythm Society, Heart Rhythm 2010;May.

49. Abed H, Wong C, Brooks A et al. Periatrial fat volume is predictive of atrial fibrillation severity. Heart Lung and Circulation Conference: New Zealand Annual Scientific Meeting of the Cardiac Society of Australia and New Zealand Adelaide, SA Australia Conference Start: 2010;2010.
50. Umetani K, Kodama Y, Nakamura T et al. High prevalence of paroxysmal atrial fibrillation and/or atrial flutter in metabolic syndrome. *Circ J* 2007;71:252-5.
51. Schnabel RB, Wilde S, Wild PS, Munzel T, Blankenberg S. Atrial fibrillation: its prevalence and risk factor profile in the German general population. *Dtsch Arztebl Int* 2012;109:293-9.
52. Lipworth L, Okafor H, Mumma MT et al. Race-specific impact of atrial fibrillation risk factors in blacks and whites in the southern community cohort study. *American Journal of Cardiology* 110 (11) (pp 1637-1642), 2012;01.
53. Schnabel RB, Johannsen SS, Wild PS, Blankenberg S. [Prevalence and risk factors of atrial fibrillation in Germany : data from the Gutenberg Health Study]. *Herz* 2015;40:8-15.
54. Martin-Rodriguez E, Guillen-Grima F, Marti A, Brugos-Larumbe A. Comorbidity associated with obesity in a large population: The APNA study. *Obesity Research and Clinical Practice* 9 (5) (pp 435-447), 2015;September.
55. Sun G, Guo L, Wang X et al. Prevalence of atrial fibrillation and its risk factors in rural China: A cross-sectional study. *Journal of the American College of Cardiology Conference: 26th Great Wall International Congress of Cardiology, Asia Pacific Heart Congress* 2015;20.
56. Guize L, Thomas F, Bean K, Benetos A, Pannier B. [Atrial fibrillation: prevalence, risk factors and mortality in a large French population with 15 years of follow-up]. *Bull Acad Natl Med* 2007;191:791-803.
57. Yap KB, Ng TP, Ong HY. Low prevalence of atrial fibrillation in community-dwelling Chinese aged 55 years or older in Singapore: a population-based study. *Journal of Electrocardiology* 41 (2) (pp 94-98), 2008;March.
58. Zhang X, Zhang S, Li Y et al. Association of obesity and atrial fibrillation among middle-aged and elderly Chinese. *Int J Obes (Lond)* 2009;33:1318-25.
59. Bonhorst D, Mendes M, Adragao P et al. Prevalence of atrial fibrillation in the Portuguese population aged 40 and over: the FAMA study. *Rev Port Cardiol* 2010;29:331-50.
60. Thanassoulis G, Massaro JM, O'Donnell CJ et al. Pericardial fat is associated with prevalent atrial fibrillation: the Framingham Heart Study. *Circ Arrhythm Electrophysiol* 2010;3:345-50.
61. Gill PS, Calvert M, Davis R, Davies MK, Freemantle N, Lip GY. Prevalence of heart failure and atrial fibrillation in minority ethnic subjects: the Ethnic-Echocardiographic Heart of England Screening Study (E-ECHOES). *PLoS One* 2011;6:e26710.

62. Long MJ, Jiang CQ, Lam TH et al. Atrial fibrillation and obesity among older Chinese: the Guangzhou Biobank Cohort Study. *Int J Cardiol* 2011;148:48-52.
63. Wetmore JB, Mahnken JD, Rigler SK et al. The prevalence of and factors associated with chronic atrial fibrillation in Medicare/Medicaid-eligible dialysis patients. *Kidney Int* 2012;81:469-76.
64. Schnabel RB, Wilde S, Wild PS, Munzel T, Blankenberg S. Atrial fibrillation: Its prevalence and risk factor profile in the German general population. *Deutsches Arzteblatt International* 109 (16) (pp 293-299), 2012;20.
65. Li Y, Wu YF, Chen KP et al. Prevalence of atrial fibrillation in China and its risk factors. *Biomed Environ Sci* 2013;26:709-16.
66. Hwan-Cheol P, Soon-Gil K, Kyoung KM, Bo YC, Jinho S. Prevalence of atrial fibrillation in asymptomatic healthy population in Korean rural area. *Journal of Clinical Hypertension Conference: 28th Annual Scientific Meeting and Exposition of the American Society of Hypertension, Inc , ASH* 2013;May.
67. Baena-Diez JM, Grau M, Fores R et al. Prevalence of atrial fibrillation and its associated factors in Spain: An analysis of 6 population-based studies. *DARIOS Study. Rev Clin Esp* 2014;214:505-12.
68. Chei CL, Raman P, Ching CK et al. Prevalence and Risk Factors of Atrial Fibrillation in Chinese Elderly: Results from the Chinese Longitudinal Healthy Longevity Survey. *Chin Med J (Engl)* 2015;128:2426-32.
69. Park HC, Park JK, Choi SI et al. Prevalence of Atrial Fibrillation and Relation to Echocardiographic Parameters in a Healthy Asymptomatic Rural Korean Population. *J Korean Med Sci* 2015;30:1078-84.
70. Sun GZ, Guo L, Wang XZ et al. Prevalence of atrial fibrillation and its risk factors in rural China: a cross-sectional study. *Int J Cardiol* 2015;182:13-7.
71. Svetlana Shalnova SA, Deev AD, Konstantinov VV. Prevalence of atrial fibrillation and its association with traditional risk factors and coronary heart disease in Russian population. *European Journal of Preventive Cardiology Conference: EuroPREvent* 2013;April.
72. Frost L, Hune LJ, Vestergaard P. [Overweight, obesity and risk factors for atrial fibrillation or flutter--secondary publication. The cohort study Diet, Cancer and Health]. *Ugeskr Laeger* 2005;167:3507-9.
73. Rodriguez F, Stefanick ML, Greenland P et al. Racial and ethnic differences in atrial fibrillation risk factors and predictors in women: Findings from the Women's Health Initiative. *Am Heart J* 2016;176:70-7.
74. Huxley RR, Lopez FL, Folsom AR et al. Absolute and attributable risks of atrial fibrillation in relation to optimal and borderline risk factors: the Atherosclerosis Risk in Communities (ARIC) study. *Circulation* 2011;123:1501-8.

75. Schnabel RB, Sullivan LM, Levy D et al. Development of a risk score for atrial fibrillation (Framingham Heart Study): a community-based cohort study. *Lancet* 2009;373:739-45.
76. Son MK, Lim NK, Cho MC, Park HY. Incidence and Risk Factors for Atrial Fibrillation in Korea: the National Health Insurance Service Database (2002-2010). *Korean Circ J* 2016;46:515-21.
77. Perez MV, Wang PJ, Larson JC et al. Risk factors for atrial fibrillation and their population burden in postmenopausal women: the Women's Health Initiative Observational Study. *Heart* 2013;99:1173-8.
78. Ermakov S, Azarbal F, Stefanick ML et al. The associations of leptin, adiponectin and resistin with incident atrial fibrillation in women. *Heart* 2016.
79. Tedrow UB, Conen D, Ridker PM et al. The long- and short-term impact of elevated body mass index on the risk of new atrial fibrillation the WHS (women's health study). *J Am Coll Cardiol* 2010;55:2319-27.
80. Ruigomez A, Johansson S, Wallander MA, Rodriguez LA. Incidence of chronic atrial fibrillation in general practice and its treatment pattern. *J Clin Epidemiol* 2002;55:358-63.
81. Toren K, Schioler L, Soderberg M, Giang KW, Rosengren A. The association between job strain and atrial fibrillation in Swedish men. *Occup Environ Med* 2015;72:177-80.
82. Casaclang-Verzosa G, Barnes ME, Blume G et al. C-reactive protein, left atrial volume, and atrial fibrillation: a prospective study in high-risk elderly. *Echocardiography* 2010;27:394-9.
83. Osorio J. Atrial fibrillation: Obesity increases risk of AF in women. *Nat Rev Cardiol* 2010;7:417.
84. Dages N, nastasiou-Nana M. Atrial fibrillation and obesity an association of increasing importance. *J Am Coll Cardiol* 2010;55:2328-9.
85. Conen D. Obesity and atrial fibrillation: the evidence is gaining weight. *Europace* 2013;15:771-2.
86. Chahal CAA, Somers VK. Risk factors: Sleep apnoea, atrial fibrillation, and heart failure - Quo vadis? *Nature Reviews Cardiology* 12 (5) (pp 263-264), 2015;28.
87. Ergun G, Basaran O, Dogan V, Dogan MM, Biteker M. Obesity and atrial fibrillation. *Int J Cardiol* 2016;223:159-60.
88. Coromilas J. Obesity and atrial fibrillation: is one epidemic feeding the other? *JAMA* 2004;292:2519-20.
89. Liew R. Obstructive sleep apnea, obesity, and atrial fibrillation--what is the mechanistic link? *Heart Rhythm* 2012;9:1417-8.

90. Hatem SN. Atrial Fibrillation and Obesity: Not Just a Coincidence. *J Am Coll Cardiol* 2015;66:12-3.
91. Korantzopoulos P, Kolettis TM. Obesity and the risk of new-onset atrial fibrillation. *JAMA* 2005;293:1974.
92. Parish D. Obesity and the risk of new-onset atrial fibrillation. *JAMA* 2005;293:1974.
93. Bajaj HS, Hillson SD. Obesity and the risk of new-onset atrial fibrillation. *JAMA* 2005;293:1974-5.
94. Obesity is a risk factor for new-onset atrial fibrillation. *Geriatrics and Aging* 8 (2) (pp 9), 2005;February.
95. Mascitelli L, Pezzetta F. Obesity, inflammation, and risk of atrial fibrillation or flutter. *Am J Med* 2006;119:e9.
96. Arias MA, Sanchez-Gila J. Obesity as a risk factor for developing postoperative atrial fibrillation. *Chest* 2006;129:828-9.
97. Cheng TO. Obesity as a risk factor for atrial fibrillation. *Int J Cardiol* 2007;114:145.
98. Arias MA, Sanchez AM, onso-Fernandez A, Garcia-Rio F. Atrial fibrillation, obesity, and obstructive sleep apnea [3]. *Archives of Internal Medicine* 167 (14) (pp 1552-1553), 2007;23.
99. Badheka AO, Rathod A, Bharadwaj A, Afonso L, Jacob S. Obesity paradox in outcomes of atrial fibrillation. *American Journal of Cardiology* 108 (3) (pp 474), 2011;01.
100. Deshmukh A, Pant S, Kumar G, Badheka AO, Paydak H. Impact of obesity on atrial fibrillation hospitalization. *Int J Cardiol* 2012;159:241-2.
101. Dhein S. Fat and the Heart: A More and More Complex Interplay. *Thoracic and Cardiovascular Surgeon* 62 (7) (pp 543-546), 2014;25.
102. Liu F, Li Y, Xu Y. Weight loss to prevent atrial fibrillation: The role of epicardial adipose tissue. *Int J Cardiol* 2016;204:124-5.
103. Amar D. Obesity as a risk factor for developing postoperative atrial fibrillation [6]. *Chest* 129 (3) (pp 828-829), 2006;March.
104. Girerd N, Pibarot P, Mathieu P. Predictors of atrial fibrillation following coronary artery bypass surgery: Increased waist circumference rather than increased body mass index? *Medical Science Monitor* 17 (3) (pp 23), 2011;2011.
105. Wanahita N, Messerli FH, Bangalore S, Gami AS, Somers VK, Steinberg JS. Atrial fibrillation and obesity--results of a meta-analysis. *Am Heart J* 2008;155:310-5.
106. Wong CX, Sullivan T, Sun MT et al. Obesity and the risk of incident, post-operative, and post-ablation atrial fibrillation: A meta-analysis of 626,603 individuals in 51 studies. *JACC: Clinical Electrophysiology* 1 (3) (pp 139-152), 2015;June.

107. Wong C, Brooks A, Sun M et al. Obesity and the risk of atrial fibrillation: A systematic review and meta-analysis. Heart Lung and Circulation Conference: Cardiac Society of Australia and New Zealand Annual Scientific Meeting and the International Society for Heart Research Australasian Section Annual Scientific Meeting 2012;2012.
108. Uyarel H, Onat A, Yuksel H, Can G, Ordu S, Dursunoglu D. Incidence, prevalence, and mortality estimates for chronic atrial fibrillation in Turkish adults. [Turkish]. Turk Kardiyoloji Dernegi Arsivi 36 (4) (pp 214-222), 2008;June.
109. Shi JH, Ji CP, Xing AJ et al. [Impact of combined systolic blood pressure and body mass index on the risk of new-onset atrial fibrillation]. Zhonghua Xin Xue Guan Bing Za Zhi 2016;44:231-7.
110. Kang S. Research in brief. The Lancet Diabetes and Endocrinology 4 (7) (pp 565), 2016;01.
111. Sliwa K, Carrington MJ, Klug E et al. Predisposing factors and incidence of newly diagnosed atrial fibrillation in an urban African community: Insights from the Heart of Soweto Study. Heart 96 (23) (pp 1878-1882), 2010;December.
112. Djousse L, Wilk JB, Hanson NQ, Glynn RJ, Tsai MY, Gaziano JM. Association Between Adiponectin and Heart Failure Risk in the Physicians' Health Study. Obesity (no pagination), 2012;15.
113. Petrone AB, Gaziano JM, Djousse L. Chocolate consumption and risk of heart failure in the Physicians' Health Study. European Journal of Heart Failure 16 (12) (pp 1372-1376), 2014;01.
114. Perkiomaki J, Ukkola O, Kiviniemi A et al. Heart rate variability findings as a predictor of atrial fibrillation in middle-aged population. Journal of Cardiovascular Electrophysiology 25 (7) (pp 719-724), 2014;July.
115. Blomstrand A, Blomstrand C, Ariai N, Bengtsson C, Bjorkelund C. Stroke incidence and association with risk factors in women: A 32-year follow-up of the Prospective Population Study of Women in Gothenburg. BMJ Open 4 (10) (no pagination), 2014;e005173.
116. Huynh K. Atrial fibrillation. Weight loss reduces AF burden. Nat Rev Cardiol 2015;12:260.
117. Rodriguez CJ, Soliman EZ, Alonso A et al. Atrial fibrillation incidence and risk factors in relation to race-ethnicity and the population attributable fraction of atrial fibrillation risk factors: The Multi-Ethnic Study of Atherosclerosis. Annals of Epidemiology 25 (2) (pp 71-76), 2015;01.
118. Macheret F, Bartz TM, Djousse L et al. Higher circulating adiponectin levels are associated with increased risk of atrial fibrillation in older adults. Heart 101 (17) (pp 1368-1374), 2015;01.

119. Tiwari S, Schirmer H, Jacobsen BK et al. Association between diastolic dysfunction and future atrial fibrillation in the Tromso Study from 1994 to 2010. *Heart* 101 (16) (pp 1302-1308), 2015;01.
120. Qureshi WT, Alirhayim Z, Blaha MJ et al. Cardiorespiratory fitness and risk of incident atrial fibrillation results from the Henry Ford Exercise Testing (FIT) project. *Circulation* 131 (21) (pp 1827-1834), 2015;26.
121. Pandit SV, Anumonwo J, Jalife J. Atrial Fibrillation Susceptibility in Obesity: An Excess Adiposity and Fibrosis Complicity? *Circ Res* 2016;118:1468-71.
122. Schmidt M, Ulrichsen SP, Pedersen L, Botker HE, Nielsen JC, Sorensen HT. 30-year nationwide trends in incidence of atrial fibrillation in Denmark and associated 5-year risk of heart failure, stroke, and death. *International Journal of Cardiology* 225 (pp 30-36), 2016;15.
123. Cui F, Zhang L, Yu C, Hu S, Zhang Y. Estimation of the disease burden attributable to 11 risk factors in Hubei Province, China: A comparative risk assessment. *International Journal of Environmental Research and Public Health* 13 (10) (no pagination), 2016;944.
124. Wong YW, Thomas L, Sun J-L et al. Predictors of incident heart failure hospitalizations among patients with impaired glucose tolerance insight from the nateglinide and valsartan in impaired glucose tolerance outcomes research study. *Circulation: Heart Failure* 6 (2) (pp 203;March).
125. Zacharias A, Schwann TA, Riordan CJ, Durham SJ, Shah AS, Habib RH. Obesity and risk of new-onset atrial fibrillation after cardiac surgery. *Circulation* 2005;112:3247-55.
126. Arias MA, Sanchez AM, Sanchez-Gila J. Postoperative atrial fibrillation and obesity. *Am J Cardiol* 2006;97:1551-2.
127. Echahidi N, Mohty D, Pibarot P et al. Obesity and metabolic syndrome are independent risk factors for atrial fibrillation after coronary artery bypass graft surgery. *Circulation* 2007;116:I213-I219.
128. Novo G, Mansueto P, La Franca ML et al. Risk factors, atrial fibrillation and thromboembolic events. *Int Angiol* 2008;27:433-8.
129. Jongnarangsin K, Chugh A, Good E et al. Body mass index, obstructive sleep apnea, and outcomes of catheter ablation of atrial fibrillation. *J Cardiovasc Electrophysiol* 2008;19:668-72.
130. Mont L, Tamborero D, Elosua R et al. Physical activity, height, and left atrial size are independent risk factors for lone atrial fibrillation in middle-aged healthy individuals. *Europace* 2008;10:15-20.
131. Tang RB, Liu XH, Kalifa J et al. Body mass index and risk of left atrial thrombus in patients with atrial fibrillation. *Am J Cardiol* 2009;104:1699-703.

132. Nicolaou VN, Papadakis JE, Dermitzakis G, Dermitzaki SI, Tsakiris AK. Effect of obesity on atrial size in older women with non-valvular paroxysmal atrial fibrillation. *Aging Clin Exp Res* 2009;21:344-8.
133. Tang RB, Gao LY, Dong JZ et al. Metabolic syndrome in patients with atrial fibrillation in the absence of structural heart disease from a tertiary hospital in China. *Chin Med J (Engl)* 2009;122:2744-7.
134. Girerd N, Pibarot P, Fournier D et al. Middle-aged men with increased waist circumference and elevated C-reactive protein level are at higher risk for postoperative atrial fibrillation following coronary artery bypass grafting surgery. *Eur Heart J* 2009;30:1270-8.
135. Filardo G, Hamilton C, Hamman B, Hebel RF, Jr., Grayburn PA. Relation of obesity to atrial fibrillation after isolated coronary artery bypass grafting. *Am J Cardiol* 2009;103:663-6.
136. Soliman EZ, Prineas RJ, Go AS et al. Chronic kidney disease and prevalent atrial fibrillation: the Chronic Renal Insufficiency Cohort (CRIC). *Am Heart J* 2010;159:1102-7.
137. Uchiyama S, Shibata Y, Hirabayashi T et al. Risk factor profiles of stroke, myocardial infarction, and atrial fibrillation: a Japanese Multicenter Cooperative Registry. *J Stroke Cerebrovasc Dis* 2010;19:190-7.
138. Chilukuri K, Dalal D, Gadrey S et al. A prospective study evaluating the role of obesity and obstructive sleep apnea for outcomes after catheter ablation of atrial fibrillation. *J Cardiovasc Electrophysiol* 2010;21:521-5.
139. Suzuki S, Yamashita T, Ohtsuka T et al. Body size and atrial fibrillation in Japanese outpatients. *Circ J* 2010;74:66-70.
140. Ahmed I, Almquist AK, Henry TD et al. Obesity and pulmonary hypertension are independent risk factors for postoperative paroxysmal atrial fibrillation after heart valve replacement surgery. *Heart Rhythm Conference: 31st Annual Scientific Sessions of the Heart Rhythm Society, Heart Rhythm* 2010;May.
141. Onuchina EL, Solov'ev OV, Mochalova OV, Kononov SK, Onuchin SG. [Metabolic syndrome and chronic persistent atrial fibrillation]. *Klin Med (Mosk)* 2011;89:26-31.
142. Bramer S, van Straten AH, Soliman Hamad MA, Berreklouw E, van den Broek KC, Maessen JG. Body mass index predicts new-onset atrial fibrillation after cardiac surgery. *Eur J Cardiothorac Surg* 2011;40:1185-90.
143. Guglin M, Maradia K, Chen R, Curtis AB. Relation of obesity to recurrence rate and burden of atrial fibrillation. *Am J Cardiol* 2011;107:579-82.
144. Thacker EL, McKnight B, Psaty BM et al. Association of body mass index, diabetes, hypertension, and blood pressure levels with risk of permanent atrial fibrillation. *J Gen Intern Med* 2013;28:247-53.

145. Cai L, Yin Y, Ling Z et al. Predictors of late recurrence of atrial fibrillation after catheter ablation. *Int J Cardiol* 2013;164:82-7.
146. Letsas KP, Siklody CH, Korantzopoulos P et al. The impact of body mass index on the efficacy and safety of catheter ablation of atrial fibrillation. *Int J Cardiol* 2013;164:94-8.
147. Zethelius B, Gudbjornsdottir S, Eliasson B, Eeg-Olofsson K, Svensson A-M, Cederholm J. Risk factors for atrial fibrillation in type 2 diabetes. Report from the Swedish National Diabetes Register: NDR. *Diabetologia Conference: 50th Annual Meeting of the European Association for the Study of Diabetes, EASD* 2014;September.
148. Abed HS, Nelson AJ, Richardson JD et al. Impact of weight reduction on pericardial adipose tissue and cardiac structure in patients with atrial fibrillation. *American Heart Journal* 169 (5) (pp 655-662 e2), 2015;01.
149. Guenancia C, Stamboul K, Garnier F et al. Obesity and new-onset atrial fibrillation in acute myocardial infarction: A gender specific risk factor. *Archives of Cardiovascular Diseases Supplements Conference: 25es Journees Europeennes de la Societe Francaise de Cardiologie Paris France Conference Start: 2015;January.*
150. Abed HS, Nelson AJ, Richardson JD et al. Impact of weight reduction on pericardial fat volume and cardiac structure: Implications for atrial fibrillation in a randomized clinical trial. *European Heart Journal Conference: European Society of Cardiology, ESC Congress 2015;01.*
151. Abed HS, Nelson AJ, Richardson JD, Worthley SG, Wittert A, Leong DP. Impact of weight reduction on pericardial fat volume and cardiac structure: Implications for atrial fibrillation-a randomized clinical trial. *Heart Rhythm Conference: 36th Annual Scientific Sessions of the Heart Rhythm Society, Heart Rhythm 2015;May.*
152. Lavie CJ, De SA, Parto P et al. Obesity and Prevalence of Cardiovascular Diseases and Prognosis-The Obesity Paradox Updated. *Prog Cardiovasc Dis* 2016;58:537-47.
153. Banach M, Goch A, Misztal M, Rysz J, Jaszewski R, Goch JH. Predictors of paroxysmal atrial fibrillation in patients undergoing aortic valve replacement. *Journal of Thoracic and Cardiovascular Surgery* 134 (6) (pp 1569-1576), 2007;December.
154. Tsang TSM, Barnes ME, Miyasaka Y et al. Obesity as a risk factor for the progression of paroxysmal to permanent atrial fibrillation: A longitudinal cohort study of 21 years. *European Heart Journal* 29 (18) (pp 2227-2233), 2008;September.
155. Badheka A, Rathod A, Kizilbash M et al. An obesity paradox in outcomes of atrial fibrillation? *Heart Rhythm Conference: 30th Annual Scientific Sessions of the Heart Rhythm Society, Heart Rhythm 2009;May.*
156. Badheka AO, Rathod A, Kizilbash MA et al. Influence of Obesity on Outcomes in Atrial Fibrillation: Yet Another Obesity Paradox. *American Journal of Medicine* 123 (7) (pp 646-651), 2010;July.

157. Garadah T, Gabani S, Alawi MA, bu-Taleb A. Prevalence and Predisposing Factors of Atrial Fibrillation in a Multi-Ethnic Society: The Impact of Racial Differences in Bahrain. *Open J Cardiovasc Surg* 2011;4:9-16.
158. Needleman M, Calkins H. Atrial fibrillation ablation in obese patients. *Cardiac Electrophysiology Clinics* 4 (3) (pp 327-334), 2012;September.
159. Sotomi Y, Inoue K, Ito N et al. Incidence and risk factors for very late recurrence of atrial fibrillation after radiofrequency catheter ablation. *Europace* 2013;15:1581-6.
160. Overvad TF, Rasmussen LH, Skjoth F, Overvad K, Lip GY, Larsen TB. Body mass index and adverse events in patients with incident atrial fibrillation. *Am J Med* 2013;126:640-17.
161. Gujian L, Jinchuan Y, Rongzeng D, Jun Q, Jun W, Wenqing Z. Impact of body mass index on atrial fibrillation recurrence: a meta-analysis of observational studies. *Pacing Clin Electrophysiol* 2013;36:748-56.
162. Shoemaker MB, Muhammad R, Farrell M et al. Relation of morbid obesity and female gender to risk of procedural complications in patients undergoing atrial fibrillation ablation. *Am J Cardiol* 2013;111:368-73.
163. Wang J, Shao X-H, Zhang H et al. The influence of body mass index on outcomes in patients with atrial fibrillation: The obesity paradox. *Circulation Conference: American Heart Association* 2013;26.
164. Zhang H, Yang Y, Zhu J et al. Body mass index and mortality in patients with atrial fibrillation. *Cardiology (Switzerland) Conference: China Heart Congress International Heart Forum* 2013;September.
165. Fioravanti F, Brisinda D, Sorbo AR, Fenici R. BMI Reduction Decreases AF Recurrence Rate in a Mediterranean Cohort. *J Am Coll Cardiol* 2015;66:2264-5.
166. Hamatani Y, Ogawa H, Uozumi R et al. Low Body Weight Is Associated With the Incidence of Stroke in Atrial Fibrillation Patients - Insight From the Fushimi AF Registry. *Circ J* 2015;79:1009-17.
167. Inoue H, Kodani E, Atarashi H, Okumura K, Yamashita T, Origasa H. Impact of Body Mass Index on the Prognosis of Japanese Patients With Non-Valvular Atrial Fibrillation. *Am J Cardiol* 2016.
168. Bunch TJ, May HT, Bair TL et al. Long-term influence of body mass index on cardiovascular events after atrial fibrillation ablation. *J Interv Card Electrophysiol* 2016.
169. Proietti M, Lane DA, Lip GY. Relation of Nonvalvular Atrial Fibrillation to Body Mass Index (from the SPORTIF Trials). *Am J Cardiol* 2016.
170. Phan K, Khuong JN, Xu J, Kanagaratnam A, Yan TD. Obesity and postoperative atrial fibrillation in patients undergoing cardiac surgery: Systematic review and meta-analysis. *Int J Cardiol* 2016;217:49-57.

171. Sandhu RK, Ezekowitz J, Andersson U et al. The 'obesity paradox' in atrial fibrillation: observations from the ARISTOTLE (Apixaban for Reduction in Stroke and Other Thromboembolic Events in Atrial Fibrillation) trial. *Eur Heart J* 2016.
172. Chu CY, Lee WH, Hsu PC et al. Association of Increased Epicardial Adipose Tissue Thickness With Adverse Cardiovascular Outcomes in Patients With Atrial Fibrillation. *Medicine (Baltimore)* 2016;95:e2874.
173. Kwon Y, Norby FL, Jensen PN et al. Association of Smoking, Alcohol, and Obesity with Cardiovascular Death and Ischemic Stroke in Atrial Fibrillation: The Atherosclerosis Risk in Communities (ARIC) Study and Cardiovascular Health Study (CHS). *PLoS One* 2016;11:e0147065.
174. Senoo K, Lip GY. Body Mass Index and Adverse Outcomes in Elderly Patients With Atrial Fibrillation: The AMADEUS Trial. *Stroke* 2016;47:523-6.
175. Wang J, Yang YM, Zhu J et al. Overweight is associated with improved survival and outcomes in patients with atrial fibrillation. *Clin Res Cardiol* 2014;103:533-42.
176. Wong C, Brooks A, Sun M et al. Body mass index predicts postoperative atrial fibrillation: Results of a contemporary meta-analysis. *Heart Lung and Circulation Conference: Cardiac Society of Australia and New Zealand Annual Scientific Meeting and the International Society for Heart Research Australasian Section Annual Scientific Meeting* 2012;2012.
177. Wright GA, Thomas K, Gula L. Is body habitus a risk factor for atrial fibrillation and does it affect outcome of AF ablation? *Canadian Journal of Cardiology Conference: 66th Annual Meeting of the Canadian Cardiovascular Society Montreal, QC Canada Conference Start: 2013;October.*
178. Adrian VH, Kaw R, Pasupuleti V et al. Association between obesity and postoperative atrial fibrillation in patients undergoing cardiac surgery: A systematic review and meta-analysis. *Journal of the American College of Cardiology Conference: 62nd Annual Scientific Session of the American College of Cardiology and i2 Summit: Innovation in Intervention, ACC 13 San Francisco, CA United States Conference Start: 2013;12.*
179. Black MH, Wu J, Singer DE et al. Body mass index and outcomes among patients with atrial fibrillation from the atria2-CVRN study. *Circulation: Cardiovascular Quality and Outcomes Conference: American Heart Association's Quality of Care and Outcomes Research in Cardiovascular Disease and Stroke* 2013;May.
180. Wong CX, Sun MT, Pathak R et al. Body mass index predicts postoperative atrial fibrillation: Results of a contemporary meta-analysis. *Circulation Conference: American Heart Association* 2012;20.
181. Zhuang J, Lu Y, Tang K, Peng W, Xu Y. Influence of body mass index on recurrence and quality of life in atrial fibrillation patients after catheter ablation: a meta-analysis and systematic review. *Clin Cardiol* 2013;36:269-75.
182. Wang J, Yang YM, Zhu J, Zhang H, Shao XH. Obesity paradox in patients with atrial fibrillation and heart failure. *Int J Cardiol* 2014;176:1356-8.

183. Abed HS, Wittert GA, Leong DP et al. Effect of weight reduction and cardiometabolic risk factor management on symptom burden and severity in patients with atrial fibrillation: a randomized clinical trial. *JAMA* 2013;310:2050-60.
184. Jideus L, Blomstrom P, Nilsson L, Stridsberg M, Hansell P, Blomstrom-Lundqvist C. Tachyarrhythmias and triggering factors for atrial fibrillation after coronary artery bypass operations. *Annals of Thoracic Surgery* 69 (4) (pp 1064-1069), 2000;April.
185. Knyazer B, Abramov D, Bilenko N, Ganiel A, Ishay Y, Katz A. Incidence and predictors of atrial fibrillation after coronary artery bypass grafting in the Negev--are we different from the rest of the world?. [Hebrew]. *Harefuah* 147 (4) (pp 299-304, 375), 2008;Apr.
186. Golmohammadi M, Javid GE, Farajzadeh H. Incidence and risk factors for atrial fibrillation after first coronary artery bypass grafting in Urumiye Imam Khomeini Hospital from 2006 to 2008. *Iranian Cardiovascular Research Journal* 4 (2) (pp 86-90), 2010;2010.
187. Sun X, Boyce SW, Hill PC et al. Association of body mass index with new-onset atrial fibrillation after coronary artery bypass graft surgery. *Cardiovascular Revascularization Medicine Conference: Cardiovascular Research Technologies, CRT* 2010;July-September.
188. Tadic M, Ivanovic B, Zivkovic N. Predictors of atrial fibrillation following coronary artery bypass surgery. *Medical Science Monitor* 17 (1) (pp CR48-CR55), 2011;2011.
189. Efir JT, Gudimella P, O'Neal WT et al. Comparison of Risk of Atrial Fibrillation in Black Versus White Patients After Coronary Artery Bypass Grafting. *Am J Cardiol* 2016;117:1095-100.
190. Sun X, Boyce SW, Hill PC et al. Association of body mass index with new-onset atrial fibrillation after coronary artery bypass grafting operations. *Ann Thorac Surg* 2011;91:1852-8.
191. Pan W, Hindler K, Lee V-V, Vaughn WK, Collard CD. Obesity in diabetic patients undergoing coronary artery bypass graft surgery is associated with increased postoperative morbidity. *Anesthesiology* 104 (3) (pp 441-447), 2006;March.
192. Ho KM, Bertenshaw C, Same S et al. Differential associations between body mass index and outcomes after elective adult cardiac surgery: a linked data cohort study. *Anaesth Intensive Care* 2013;41:573-83.
193. Hernandez AV, Kaw R, Pasupuleti V et al. Association between obesity and postoperative atrial fibrillation in patients undergoing cardiac operations: a systematic review and meta-analysis. *Ann Thorac Surg* 2013;96:1104-16.
194. Verdecchia P, Dagenais G, Healey J et al. Blood pressure and other determinants of new-onset atrial fibrillation in patients at high cardiovascular risk in the Ongoing Telmisartan Alone and in Combination with Ramipril Global Endpoint Trial/Telmisartan Randomized Assessment Study in ACE Intolerant subjects with cardiovascular Disease studies. *Journal of Hypertension* 30 (5) (pp 1004-1014), 2012;May.

195. Grundvold I, Bodegard J, Nilsson PM et al. Body weight and risk of atrial fibrillation in 7,169 patients with newly diagnosed type 2 diabetes; an observational study. *Cardiovasc Diabetol* 2015;14:5.
196. ves-Cabratos L, Garcia-Gil M, Comas-Cufi M et al. Diabetes and new-onset atrial fibrillation in a hypertensive population. *Ann Med* 2016;48:119-27.
197. Zethelius B, Eliasson B, Eeg-Olofsson K, Svensson AM, Gudbjornsdottir S, Cederholm J. A new model for 5-year risk of cardiovascular disease in type 2 diabetes, from the Swedish National Diabetes Register (NDR). *Diabetes Res Clin Pract* 2011;93:276-84.
198. Arisoy E, Korkmaz I, Eren SH et al. Analyses of the risc factors for Atrial fibrillation among the patients who were admitted to emergency service. *Journal of Clinical and Analytical Medicine* 3 (2) (no pagination), 2012;April.
199. Liu HL, Lu XL, Guo ZP, Lin JX. [Association between metabolic syndrome and incidence of atrial fibrillation in essential hypertensive patients without left ventricular hypertrophy]. *Zhonghua Xin Xue Guan Bing Za Zhi* 2010;38:15-9.
200. Karajamaki AJ, Patsi OP, Savolainen M, Kesaniemi YA, Huikuri H, Ukkola O. Non-Alcoholic Fatty Liver Disease as a Predictor of Atrial Fibrillation in Middle-Aged Population (OPERA Study). *PLoS One* 2015;10:e0142937.
201. Acharya M, Harling L, Moscarelli M, Ashrafian H, Athanasiou T, Casula R. Influence of body mass index on outcomes after minimal-access aortic valve replacement through a J-shaped partial upper sternotomy. *J Cardiothorac Surg* 2016;11:74.
202. Guenancia C, Stamboul K, Garnier F et al. Obesity and new-onset atrial fibrillation in acute myocardial infarction: a gender specific risk factor. *Int J Cardiol* 2014;176:1039-41.
203. Gizurarson S, Stahlman M, Jeppsson A et al. Atrial fibrillation in patients admitted to coronary care units in western Sweden - focus on obesity and lipotoxicity. *J Electrocardiol* 2015;48:853-60.
204. Zethelius B, Gudbjornsdottir S, Eliasson B, Eeg-Olofsson K, Svensson AM, Cederholm J. Risk factors for atrial fibrillation in type 2 diabetes: report from the Swedish National Diabetes Register (NDR). *Diabetologia* 2015;58:2259-68.
205. Gao M, Sun J, Young N et al. Impact of Body Mass Index on Outcomes in Cardiac Surgery. *Journal of Cardiothoracic and Vascular Anesthesia* 30 (5) (pp 1308-1316), 2016;01.
206. Sumeray M, Steiner M, Sutton P, Treasure T. Age and obesity as risk factors in perioperative atrial fibrillation. *Lancet* 2 (8608) (pp 448), 1988;1988.
207. Zhu W, Wan R, Liu F et al. Relation of Body Mass Index With Adverse Outcomes Among Patients With Atrial Fibrillation: A Meta-Analysis and Systematic Review. *J Am Heart Assoc* 2016;5.

208. Ivanovic B, Tadic M, Bradic Z, Zivkovic N, Stanisavljevic D, Celic V. The influence of the metabolic syndrome on atrial fibrillation occurrence and outcome after coronary bypass surgery: A 3-year follow-up study. *Thoracic and Cardiovascular Surgeon* 62 (7 Supplement 01) (pp 561-568), 2014;01.
209. Garimella RS, Sears SF, Gehi AK. Depression and Physical Inactivity as Confounding the Effect of Obesity on Atrial Fibrillation. *Am J Cardiol* 2016;117:1760-4.
210. Haghjoo M, Salem N, Rafati M, Fazelifar A. Predictors of the atrial fibrillation following catheter ablation of typical atrial flutter. *Res Cardiovasc Med* 2013;2:90-4.
211. Im SI, Chun KJ, Park SJ, Park KM, Kim JS, On YK. Long-term Prognosis of Paroxysmal Atrial Fibrillation and Predictors for Progression to Persistent or Chronic Atrial Fibrillation in the Korean Population. *J Korean Med Sci* 2015;30:895-902.
212. Pawlowska-Jenerowicz W, Dabrowski M. The metabolic syndrome as a risk factor for idiopathic paroxysmal atrial fibrillation: A one year follow-up after a first episode of atrial fibrillation. *European Heart Journal Conference: European Society of Cardiology, ESC Congress 2009;September*.
213. Menzorov M, Shutov A, Serov V, Menzorova.E. Anthropometric parameters and early recurrence of atrial fibrillation. *European Journal of Internal Medicine Conference: 10th Congress of the European Federation of Internal Medicine Athens Greece Conference Start: 2011;October*.
214. Nigam A, Khairy P, Talajic M, Levesque S, Roy D. The Influence of body-mass index on outcomes in subjects with atrial fibrillation and heart failure: Data from the AF-CHF study. *European Heart Journal Conference: European Society of Cardiology, ESC Congress 2011;August*.
215. Lim T, Koay C, See V et al. Larger body size but not BMI predict longer atrial fibrillation ablation procedure times and increased arrhythmia recurrences on long term follow up. *Heart Lung and Circulation Conference: Cardiac Society of Australia and New Zealand Annual Scientific Meeting and the International Society for Heart Research Australasian Section Annual Scientific Meeting 2011;2011*.
216. Kim T-H, Park J, Park J-K et al. Pericardial fat volume is an independent predictor for clinical recurrence of atrial fibrillation and obstructive sleep apnea in patients who underwent catheter ablation: Over 600 case study. *Circulation Conference: American Heart Association 2013;26*.
217. Babar T, Mekuria S, Malik P, Chung MK. Obesity and recurrence of atrial fibrillation after cardioversion. *Journal of the American College of Cardiology Conference: American College of Cardiology 58th Annual Scientific Session and i2 Summit: Innovation in Intervention Orlando, FL United States Conference Start: 2009;2009*.
218. Smit MD, Groenveld HF, Achekar ID, Wiesfeld AC, Van G, I. Body mass index predicts subacute and overall atrial fibrillation recurrence in patients with early persistent atrial fibrillation. *Heart Rhythm Conference: 31st Annual Scientific Sessions of the Heart Rhythm Society, Heart Rhythm 2010;May*.

219. Guglin M, Chen R, Maradia K. Obesity is associated with higher recurrence of atrial fibrillation. European Heart Journal Conference: European Society of Cardiology, ESC Congress 2010;September.
220. Ferrer-Hita JJ, Rodriguez-Gonzalez A, Blanco-Palacios G et al. Statins therapy, body mass index and short and long-term prediction of atrial fibrillation recurrence after electrical cardioversion. Journal of Cardiovascular Electrophysiology Conference: Venice Arrhythmias 2011;October.
221. Vatutin M, Kalinkina N, Shevelok A, Kashanskaya O. Obesity as a risk factor for atrial fibrillation recurrence. Journal of Interventional Cardiac Electrophysiology Conference: 8th Annual Congress of the European Cardiac Arrhythmia Society, ECAS 2012;April.
222. Siebermair J, Clauss S, Schussler F et al. Role of hemodynamic parameters and body mass index in patients undergoing pulmonary vein isolation for treatment of atrial fibrillation. Journal of Interventional Cardiac Electrophysiology Conference: 9th Annual Congress of the European Cardiac Arrhythmia Society, ECAS 2013;April.
223. Lavie CJ, Milani RV, Ventura HO. Obesity and Cardiovascular Disease. Risk Factor, Paradox, and Impact of Weight Loss. Journal of the American College of Cardiology 53 (21) (pp 1925;26).
224. Gersh BJ, Tsang TS, Seward JB. The changing epidemiology and natural history of nonvalvular atrial fibrillation: clinical implications. Trans Am Clin Climatol Assoc 2004;115:149-59.
225. Gersh BJ, Tsang TSM, Barnes ME, Seward JB. The changing epidemiology of non-valvular atrial fibrillation: The role of novel risk factors. European Heart Journal, Supplement 7 (C) (pp C5-C11), 2005;May.
226. Wolk R, Somers VK. Obesity-related cardiovascular disease: Implications of obstructive sleep apnea. Diabetes, Obesity and Metabolism 8 (3) (pp 250-260), 2006;May.
227. Chen LY, Shen WK. Epidemiology of atrial fibrillation: a current perspective. Heart Rhythm 2007;4:S1-S6.
228. Somers VK, Gami AS, Block PC. Incident atrial fibrillation: Impact of obstructive sleep apnea and obesity. ACC Cardiosource Review Journal 16 (5) (pp 6-8), 2007;May.
229. Anand RG, Peters RW, Donahue TP. Obesity and dysrhythmias. Journal of the cardiometabolic syndrome 3 (3) (pp 149-154), 2008;2008.
230. Conen D, Osswald S, Albert CM. Epidemiology of atrial fibrillation. Swiss Med Wkly 2009;139:346-52.
231. Rosiak M, Dziuba M, Chudzik M et al. Risk factors for atrial fibrillation: Not always severe heart disease, not always so 'lonely'. Cardiol J 2010;17:437-42.

232. Kupczynska K, Wierzbowska-Drabik K. Obesity and cardiovascular risk - Current communications review. [Polish]. *Polski Przegląd Kardiologiczny* 12 (2) (pp 149-153), 2010;2010.
233. Kuhne M, Conen D. Atrial fibrillation in women. *Therapy* 7 (2) (pp 139-146), 2010;March.
234. Musil V. Risk factors of atrial fibrillation. [Slovak]. *Kardiologicka Revue* 12 (3) (pp 131-133), 2010;2010.
235. Mattioli AV. Lifestyle and atrial fibrillation. *Expert Rev Cardiovasc Ther* 2011;9:895-902.
236. Needleman M, Calkins H. The role of obesity and sleep apnea in atrial fibrillation. *Curr Opin Cardiol* 2011;26:40-5.
237. Artham SM, Lavie CJ, De SA, Ventura HO, Milani RV. Obesity, Age, and Cardiac Risk. *Current Cardiovascular Risk Reports* 5 (2) (pp 128-137), 2011;2011.
238. Lioni L, Korantzopoulos P, Letsas KP. Catheter ablation of atrial fibrillation in overweight and obese patients. *Journal of Atrial Fibrillation* 2 (8) (no pagination), 2011;December.
239. Zalesin KC, Franklin BA, Miller WM, Peterson ED, McCullough PA. Impact of Obesity on Cardiovascular Disease. *Medical Clinics of North America* 95 (5) (pp 919-937), 2011;September.
240. Asghar O, Alam U, Hayat SA, Aghamohammadzadeh R, Heagerty AM, Malik RA. Obesity, diabetes and atrial fibrillation; epidemiology, mechanisms and interventions. *Curr Cardiol Rev* 2012;8:253-64.
241. Schnabel RB. Can we predict the occurrence of atrial fibrillation? *Clin Cardiol* 2012;35 Suppl 1:5-9.
242. Al Chekatie MO, Akar JG. Epicardial fat and atrial fibrillation: A review. *Journal of Atrial Fibrillation* 2 (10) (no pagination), 2012;April.
243. Menezes AR, Lavie CJ, DiNicolantonio JJ et al. Cardiometabolic risk factors and atrial fibrillation. *Rev Cardiovasc Med* 2013;14:e73-e81.
244. Abed HS, Wittert GA. Obesity and atrial fibrillation. *Obes Rev* 2013;14:929-38.
245. Magnani JW, Hylek EM, Apovian CM. Obesity begets atrial fibrillation: a contemporary summary. *Circulation* 2013;128:401-5.
246. Menezes AR, Lavie CJ, DiNicolantonio JJ et al. Atrial fibrillation in the 21st century: a current understanding of risk factors and primary prevention strategies. *Mayo Clin Proc* 2013;88:394-409.
247. Menezes AR, Lavie CJ, DiNicolantonio JJ et al. Atrial fibrillation in the 21st century: A current understanding of risk factors and primary prevention strategies. *Mayo Clinic Proceedings* 88 (4) (pp 394-409), 2013;April.

248. Tadic M, Ivanovic B, Cuspidi C. What do we currently know about metabolic syndrome and atrial fibrillation? *Clinical Cardiology* 36 (11) (pp 654-662), 2013;November.
249. Asghar O, Alam U, Hayat SA, Aghamohammadzadeh R, Heagerty AM, Malik RA. Diabetes, obesity and atrial fibrillation: Epidemiology, mechanisms and interventions. *Journal of Atrial Fibrillation* 6 (2) (pp 47-55), 2013;August-September.
250. Rahman F, Kwan GF, Benjamin EJ. Global epidemiology of atrial fibrillation. *Nature Reviews Cardiology* 11 (11) (pp 639-654), 2014;25.
251. Andrade J, Khairy P, Dobrev D, Nattel S. The clinical profile and pathophysiology of atrial fibrillation: Relationships among clinical features, epidemiology, and mechanisms. *Circulation Research* 114 (9) (pp 1453-1468), 2014;25.
252. Nalliah CJ, Sanders P, Kottkamp H, Kalman JM. The role of obesity in atrial fibrillation. *Eur Heart J* 2015.
253. Menezes AR, Lavie CJ, De SA et al. Lifestyle Modification in the Prevention and Treatment of Atrial Fibrillation. *Prog Cardiovasc Dis* 2015;58:117-25.
254. Goudis CA, Korantzopoulos P, Ntalas IV, Kallergis EM, Ketikoglou DG. Obesity and atrial fibrillation: A comprehensive review of the pathophysiological mechanisms and links. *J Cardiol* 2015;66:361-9.
255. Miller JD, Aronis KN, Chrispin J et al. Obesity, Exercise, Obstructive Sleep Apnea, and Modifiable Atherosclerotic Cardiovascular Disease Risk Factors in Atrial Fibrillation. *J Am Coll Cardiol* 2015;66:2899-906.
256. Mahajan R, Lau DH, Sanders P. Impact of obesity on cardiac metabolism, fibrosis, and function. *Trends in Cardiovascular Medicine* 25 (2) (pp 119-126), 2015;01.
257. Wong CX, Ganesan AN, Selvanayagam JB. Epicardial fat and atrial fibrillation: current evidence, potential mechanisms, clinical implications, and future directions. *Eur Heart J* 2016.
258. Duraj I, Broncel M. [Obesity as a risk factor for atrial fibrillation]. *Pol Merkur Lekarski* 2016;40:5-8.
259. Hatem SN, Redheuil A, Gandjbakhch E. Cardiac adipose tissue and atrial fibrillation: the perils of adiposity. *Cardiovasc Res* 2016;109:502-9.
260. Iacobellis G. Is obesity a risk factor for atrial fibrillation? *Nat Clin Pract Cardiovasc Med* 2005;2:134-5.
261. Watanabe H, Tanabe N, Watanabe T et al. Metabolic syndrome and risk of development of atrial fibrillation: the Niigata preventive medicine study. *Circulation* 2008;117:1255-60.
262. Chamberlain AM, Agarwal SK, Ambrose M, Folsom AR, Soliman EZ, Alonso A. Metabolic syndrome and incidence of atrial fibrillation among blacks and whites in the Atherosclerosis Risk in Communities (ARIC) Study. *Am Heart J* 2010;159:850-6.

263. Smith JG, Platonov PG, Hedblad B, Engstrom G, Melander O. Atrial fibrillation in the Malmo Diet and Cancer study: a study of occurrence, risk factors and diagnostic validity. *Eur J Epidemiol* 2010;25:95-102.
264. Tanner RM, Baber U, Carson AP et al. Association of the metabolic syndrome with atrial fibrillation among United States adults (from the REasons for Geographic and Racial Differences in Stroke [REGARDS] Study). *Am J Cardiol* 2011;108:227-32.
265. Suzuki H, Ohira T, Takeishi Y et al. Increased prevalence of atrial fibrillation after the Great East Japan Earthquake: Results from the Fukushima Health Management Survey. *Int J Cardiol* 2015;198:102-5.
266. O'Neal WT, Judd SE, Limdi NA et al. Differential Impact of Risk Factors in Blacks and Whites in the Development of Atrial Fibrillation: the Reasons for Geographic And Racial Differences in Stroke (REGARDS) Study. *J Racial Ethn Health Disparities* 2016.
267. Alonso A, Bahnon JL, Gaussoin SA et al. Effect of an intensive lifestyle intervention on atrial fibrillation risk in individuals with type 2 diabetes: The Look AHEAD randomized trial. *Am Heart J* 2015;170:770-7.

					BMI, men	25.0-29.9 ≥30.0 Per unit	1.12 (0.80-1.57) 1.64 (1.07-2.51) 1.05 (1.01-1.08)	
					BMI, women	18.5-24.9 25.0-29.9 ≥30.0 Per unit	1.00 1.19 (0.74-1.92) 0.96 (0.42-2.20) 0.99 (0.93-1.06)	
						18.5-24.9 25.0-29.9 ≥30.0 Per unit	1.00 1.02 (0.63-1.64) 2.02 (1.20-3.39) 1.06 (1.02-1.11)	
Gami AS et al, 2007, USA	Olmsted County Study	1987-2003, 4.7 years follow-up	3542 men and women, mean age 49 years: 133 AF cases	Unclear	BMI	Per 1 unit	1.07 (1.05-1.10)	Age, sex, CAD, lowest nocturnal oxygen saturation
Minami M et al, 2009, Japan	Ishikawa Prefecture	1998-2006, NA	69 AF cases (men) 138 controls (nested case-control study)	Unclear	BMI	Per 1 unit	1.11 (0.98-1.26)	Age, time period, SBP, TCH, gamma-glutamyltranspeptidase, uric acid, fasting plasma glucose, hemoglobin, cardiomegaly, Brinkman index, alcohol
Rosengren A et al, 2009, Sweden	The Multifactor Primary Prevention Study	1970-1973 - 2004, 34.3 years follow-up	6903 men, age 47-56 years: 1253 AF hospital discharge diagnosis cases	Measured (current) Self-reported (weight at age 20 years)	BMI at age 20	<21 21-22.2 22.3-23.7 >23.7 Per 1 unit	1.00 1.02 (0.87-1.20) 1.06 (0.91-1.25) 1.28 (1.10-1.50) 1.05 (1.02-1.08)	Age
					Midlife BMI	<20.00 20.00-22.49 22.50-24.99 25.00-27.49 27.50-29.99 ≥30.00 Per 1 unit	1.11 (0.67-1.78) 1.00 1.15 (0.94-1.41) 1.32 (1.10-1.66) 1.50 (1.21-1.88) 1.56 (1.20-2.02) 1.04 (1.02-1.06)	Age, intercurrent heart failure, intercurrent MI, SBP, treatment for hypertension, smoking, diabetes, alcohol, occupational class
					Body surface area	<1.75 m ² 1.75-1.83 1.83-1.91 >1.91	1.00 1.39 (1.16-1.66) 1.52 (1.28-1.81) 1.95 (1.65-2.31)	
					Weight change from age 20 to midlife	Loss of more than 4% -4 to +4% +5-15% +16-35%	1.11 (0.84-1.47) 1.00 1.08 (0.90-1.30) 1.22 (1.02-1.47)	

						+>35%	1.31 (1.02-1.68)	
Schnabel RB et al, 2010, Iceland	Age, Gene/ Environment Susceptibility-Reykjavik Study	2002-2006 – 2008, 5 years follow-up	4238 men and women, age 45-95 years: 226 AF cases	Measured	BMI	Per 5 units	1.22 (1.05-1.41)	Age, sex, SBP, hypertension treatment, PR interval, prevalent heart failure
Schnabel RB et al, 2010, USA	Cardiovascular Health Study	1989-1990/ 1992-1993 – 2005, 5 years follow-up	5410 men and women, age 45-95 years: 958 AF cases	Measured	BMI, whites BMI, African Americans	Per 5 units Per 5 units	1.14 (1.05-1.23) 1.29 (1.10-1.51)	Age, sex, SBP, hypertension treatment, PR interval, valvular heart disease (whites only), prevalent heart failure
Hodgkinson JA et al, 2011, United Kingdom	UK General Practice Research Database	1987-2007, NA	44348 AF cases 161104 controls (nested case-control study)	Measured	BMI	10-19 20-24 25-29 ≥30	1.14 (1.09-1.19) 1.00 1.02 (0.91-1.14) 1.29 (1.15-1.45)	Age, sex, practice, calendar time, COPD, cerebrovascular accident, diabetes, heart failure, hyperthyroidism, IHD, hypertension, bisphosphonates, oral glucocorticoids, statins, xanthine derivate, beta-2 agonists, drugs affecting the renin-angiotensin-aldosterone system, alcohol, smoking
Grundvold I et al, 2012, Norway	Oslo Cardiovascular Health Survey	1972-1975 – 2008, 30 years follow-up	2014 men, age 40-59 years: 270 AF cases	Measured	BMI	Per 2.8 units	1.16 (1.02-1.32)	Age, SBP, DBP, physical fitness, exercise maximal heart rated, pulse pressure, exercise maximal SBP
Korda RJ et al, 2012, Australia	The 45 and Up Study	2006-2009, 2.3 years follow-up	246361 men and women, age ≥45 years: 1880 AF cases	Self-reported	BMI, age 45-64 years BMI, age 65-79 years BMI, age ≥80 years	18.5-<25.0 25.0-<30.0 ≥30.0 18.5-<25.0 25.0-<30.0 ≥30.0 18.5-<25.0 25.0-<30.0 ≥30.0	1.00 1.37 (1.09-1.72) 1.84 (1.45-2.33) 1.00 1.07 (0.91-1.26) 1.33 (1.11-1.60) 1.00 1.04 (0.87-1.25) 1.15 (0.88-1.50)	Age, sex, region of residence, household income, smoking, alcohol, private health insurance status,
Alonso A et al, 2013, USA	Framingham Heart Study Offspring cohort	1995-1998 - 2005, NA years of follow-up	2838 men and women, mean age 60 years: 143 cases	Measured	Weight	Per 15 kg	1.22 (1.03-1.44)	Age, sex
Alonso A et al, 2013, USA	Cardiovascular Health Study	1989-1990, 1992-1993 - 2000, NA years	5043 men and women, age ≥65 years: 624 cases	Measured	Weight, whites Weight, blacks	Per 15 kg Per 15 kg	1.18 (1.07-1.31) 1.31 (1.04-1.65)	Age, sex

		of follow-up						
Alonso A et al, 2013, USA	Atherosclerosis Risk in Communities Cohort	1996-1998, -2005, NA years of follow-up	10675 men and women, age 45-64 years: 419 cases	Measured	Weight, whites Weight, blacks	Per 15 kg Per 15 kg	1.39 (1.26-1.53) 1.44 (1.08-1.91)	Age, sex
Alonso A et al, 2013, Island	Age, Gene/ Environment Susceptibility Reykjavik Study	2002-2006 -2011, NA years of follow-up	4469 men and women, mean age 76 years: 408 cases	Measured	Weight	Per 15 kg	1.17 (1.04-1.31)	Age, sex
Alonso A et al, 2013, Netherlands	Rotterdam Study	1997-2005, NA years of follow-up	3203 men and women, age ≥55 years: 177 cases	Measured	Weight	Per 15 kg	1.55 (1.28-1.87)	Age, sex
Conen D et al, 2013, USA	Women's Health Study	NA-2011, 16.4 years follow-up	34713 women, age ≥45 years: 796 AF cases	Self-reported	Body weight	Per 10 kg	1.07 (0.998-1.14)	Age, hypertension, diabetes, race, education, alcohol, smoking, exercise, height
Karasoy D et al, 2013, Denmark	Danish Pregnant Women	2004-2009 -2010, 4.6 years follow-up	271203 women, mean age 30.6 years: 110 AF hospitalizations	Measured	BMI	<18.5 18.5-25 25-29.9 30-35 >35	1.65 (0.88-3.35) 1.00 1.13 (0.68-1.88) 2.04 (1.13-3.69) 3.50 (1.86-6.58)	Age, hyperthyroidism, previous use of beta-blockers
Nyrnes A et al, 2013, Norway	The Tromsø study	1994-1995 -2007, 11 years follow-up	22815 men and women, age 25-96 years: 461/361 AF cases	Measured	BMI, all AF, men BMI, lone AF, men BMI, all AF, women BMI, lone AF, women	Per 3.2 units Per 3.2 units Per 4.1 units Per 4.1 units	1.16 (1.06-1.27) 1.47 (1.32-1.63) 1.47 (0.90-2.40) 2.13 (1.47-3.09)	Age, height, total cholesterol, HDL-cholesterol, hypertension, palpitations, diabetes (all AF only), CHD (all AF only)
Azarbal F et al, 2014, USA	Women's Health Initiative	1994-1998 –2011, 11.5 years follow-up	81317 women, age 50-79 years: 9792 AF cases	Measured	BMI	Per 5 units	1.12 (1.10-1.14)	Age, race/ethnicity, education, hypertension, diabetes, hyperlipidemia, CAD, heart failure, PAD, current smoking, physical activity
Reeves GK et al, 2014, United Kingdom	Million Women's Study	1996-2001 –2008, 9.2 years follow-up	1251619 women, age 50-64 years: 11078 AF hospitalizations	Self-reported	BMI	<22.5 22.5-24.9 25.0-29.9 30.0-34.9 ≥35.0 Per 5 units	0.95 (0.91-1.00) 1.00 (0.96-1.04) 1.24 (1.20-1.28) 1.75 (1.67-1.82) 2.90 (2.74-3.07) 1.43 (1.40-1.46)	Age, geographical region, SES, age at 1 st birth, parity, smoking status, alcohol intake, physical activity, time since menopause, HRT use
Huxley RR et	Atherosclerosis	1987-2009,	14219 men and	Measured	BMI	18.5-24.9	1.00	Age, sex, race, study site, education,

al, 2014, USA	Risk in Communities Study	~18.2 years follow-up	women, age 45-64 years: 1775 AF cases		<p>Waist circumference</p> <p>Weight change, men</p> <p>Weight change, women</p>	<p>25.0-29.9 ≥30.0</p> <p>≤92/≤84 cm 93-98/85-94 99-105/95-105 ≥106/≥106</p> <p>>5% loss 0-5% loss 0 to 4.9% gain 5-9.9 gain ≥10% gain</p> <p>>5% loss 0-5% loss 0 to 4.9% gain 5-9.9 gain ≥10% gain</p>	<p>1.20 (1.06-1.36) 1.95 (1.72-2.21) 1.00 1.18 (1.01-1.37) 1.52 (1.31-1.76) 2.13 (1.85-2.46) 1.52 (1.16-1.99) 1.01 (0.79-1.31) 1.00 1.33 (1.04-1.70) 1.61 (1.24-2.11) 1.45 (1.08-1.93) 1.24 (0.93-1.64) 1.00 1.24 (0.94-1.62) 1.19 (0.90-1.55)</p>	income, prior CVD, cigarette smoking, height, physical activity, alcohol
Sandhu RK et al, 2014, USA	Women's Health Study	1993 – 2004, 16.4 years follow-up	34720 women, age ≥45 years: 690 paroxysmal AF cases 349 nonparoxysmal AF cases	Self-reported	<p>BMI, paroxysmal AF</p> <p>BMI, nonparoxysmal AF</p> <p>BMI, paroxysmal AF</p> <p>BMI, nonparoxysmal AF</p>	<p><25 25-<30 ≥30</p> <p>Per 1 unit</p> <p><25 25-<30 ≥30</p> <p>Per 1 unit</p> <p><25 25-<30 ≥30</p> <p>Per 1 unit</p>	<p>1.00 1.30 (1.08-1.55) 1.49 (1.22-1.83) 1.03 (1.02-1.05) 1.00 1.51 (1.15-1.97) 2.56 (1.93-3.40) 1.07 (1.05-1.09) 1.00 1.30 (1.08-1.55) 1.50 (1.22-1.84) 1.03 (1.02-1.05) 1.00 1.51 (1.15-1.97) 2.57 (1.93-3.40) 1.07 (1.05-1.09)</p>	Age, aspirin, vitamin E, beta-carotene, hypertension, diabetes, cholesterol, alcohol, smoking, exercise, + interim MI, stroke, revascularization, heart failure
Frost L et al, 2014, Denmark	Danish Diet, Cancer and Health Study	1993-1997 - 13.5 years follow-up	55273 men and women, age 50-64 years: 1669/912 AF cases	Measured	<p>Weight</p> <p>Weight, adj. height</p> <p>BMI</p> <p>Waist circumference</p> <p>Hip circumference</p> <p>WHR</p> <p>Fat mass</p>	<p>Per 14.1 kg</p> <p>Per 14.1 kg</p> <p>Per 4.1 units</p> <p>Per 12.7 cm</p> <p>Per 7.9 cm</p> <p>Per 0.10 units</p> <p>Per 8.3 kg</p>	<p>1.36 (1.31-1.40) 1.29 (1.24-1.34) 1.26 (1.21-1.30) 1.28 (1.23-1.33) 1.29 (1.24-1.33) 1.11 (1.07-1.16) 1.29 (1.24-1.33)</p>	Age, smoking status, fruit and vegetables, alcohol, physical activity, total energy, education, hypertension, diabetes, hypercholesterolemia, IHD, CHF, vascular heart disease

					Fat mass, adj. LBM Fat% Lean body mass LBM, adj. height LBM, adj. fat mass	Per 8.3 kg Per 7.4% Per 9.7 kg Per 9.7 kg Per 9.7 kg	1.03 (0.99-1.09) 1.19 (1.14-1.24) 1.40 (1.35-1.45) 1.38 (1.32-1.45) 1.37 (1.30-1.44)	
Schmidt M et al, 2014, Denmark	Danish Military Conscripts	1977-2012, 26 years follow-up	12850 men, median age 19 years: 227 AF cases	Measured	BMI	<18.5 18.5-24.9 25.0-29.9 ≥30.0	0.99 (0.52-1.87) 1.00 2.08 (1.48-2.92) 2.87 (1.46-5.62)	Years of education, height
Knuiman M et al, 2014, Australia	The Busselton Health Study	1994-1995 - 2010, 15 years follow-up	4267 men and women, age 25-84 years: 343 AF cases	Measured	BMI WC WHR	Per 4.2 units Per 12.7 cm Per 0.09 units	1.34 (1.21-1.49) 1.37 (1.21-1.55) 1.21 (1.02-1.43)	Age, sex, height
Aronis KN et al, 2015, USA	Health, Aging, and Body Composition Study	1997-1998 – 2008, 10 years follow-up	2717 men and women, mean age 74 years: 371 AF cases	Measured	BMI, all Abdominal circumference SAT VAT SAT+VAT Total fat mass Total fat percent BMI, whites Abdominal circumference SAT VAT SAT+VAT Total fat mass Total fat percent BMI, blacks Abdominal circumference SAT VAT SAT+VAT Total fat mass Total fat percent	Per 4.7 units Per 13 cm Per 120 cm ² Per 67 cm ² Per 1 SD Per 9 kg Per 8% Per 4.7 units Per 13 cm Per 120 cm ² Per 67 cm ² Per 1 SD Per 9 kg Per 8% Per 4.7 units Per 13 cm Per 120 cm ² Per 67 cm ² Per 1 SD Per 9 kg Per 8%	1.14 (1.02-1.28) 1.16 (1.04-1.28) 1.11 (0.97-1.27) 1.07 (0.96-1.19) 1.10 (0.98-1.25) 1.13 (1.002-1.27) 1.03 (0.87-1.22) 1.11 (0.96-1.30) 1.13 (0.94-1.36) 1.16 (0.98-1.38) 1.04 (0.92-1.19) 1.12 (0.96-1.30) 1.16 (0.99-1.34) 1.06 (0.85-1.31) 1.13 (0.94-1.36) 1.27 (1.06-1.52) 0.98 (0.78-1.22) 1.16 (0.93-1.45) 1.04 (0.84-1.29) 1.04 (0.86-1.27) 0.92 (0.69-1.23)	Age, sex, race, site, smoking, adiposity measure, systolic and diastolic blood pressure, treatment of hypertension, total to HDL cholesterol ratio, heart rate, ECG left ventricular hypertrophy, PR interval, prevalent heart failure, coronary artery disease, diabetes
Azarbal F et al, 2015, USA	Women's Health Initiative	1994-1998 – 2011, 11.6 years follow-up	8832 women, mean age 63.3 years: 1035 AF cases	Measured	BMI Total body lean mass Central lean mass	Per 5 units Per 5 units Per 5 units	1.07 (1.01-1.13) 1.21 (1.14-1.29) 1.49 (1.31-1.69)	Age, ethnicity, education, hypertension, diabetes, hyperlipidemia, coronary artery

					Peripheral lean mass Total LBMI Central LBMI Peripheral LBMI Total body fat mass Central fat mass Peripheral fat mass Total body fat% Central fat% of central mass Central fat% of total fat mass	Per 5 units Per 5 units Per 5 units Per 5 units Per 5 kg Per 5 kg Per 5 kg Per 5 % Per 5 % Per 5 %	1.37 (1.21-1.56) 1.39 (1.15-1.67) 2.03 (1.41-2.91) 1.74 (1.22-2.50) 1.04 (1.01-1.07) 1.05 (1.00-1.11) 1.10 (1.04-1.16) 1.00 (0.95-1.04) 0.98 (0.94-1.03) 0.95 (0.90-0.99)	disease, heart failure, peripheral artery disease, smoking, dietary modification, and hormone intervention
Vermond RA et al, 2015, Netherlands	Prevention of Renal and Vascular End-Stage Disease	NA-2008, 9.7 years follow-up	8265 men and women, age 28-75 years: 265 AF cases	Measured	BMI	Per 5 units	1.45 (1.21-1.74)	Age, sex
Nyström PK et al, 2015, Sweden	Stockholm County Study	1997-1999 – 2012, 13.6 years follow-up	1924 men and 2097 women, age 60 years: 285 AF cases	Measured	Weight Waist circumference Hip circumference SAD BMI WHR BMI, no MetS BMI, MetS BMI, no MetS BMI, MetS BMI, no MetS BMI, MetS WC, no MetS WC, MetS WC, no MetS WC, MetS WC, no MetS WC, MetS	Per 14.2 kg Per 12.4 cm Per 8.4 cm Per 2.9 cm Per 4.2 kg/m ² Per 0.087 units 18.5-24.9 18.5-24.9 25.0-29.9 25.0-29.9 ≥30.0 ≥30.0 <94/<80 cm <94/<80 cm 94-101.9/80-87.9 94-101.9/80-87.9 ≥102/≥88 ≥102/≥88	1.47 (1.31-1.65) 1.35 (1.19-1.54) 1.38 (1.24-1.53) 1.28 (1.14-1.44) 1.25 (1.12-1.40) 1.05 (0.88-1.25) 1.00 1.17 (0.51-2.70) 1.01 (0.73-1.40) 1.67 (1.16-2.41) 1.75 (1.11-2.74) 1.92 (1.34-2.74) 1.00 1.45 (0.88-2.38) 1.19 (0.80-1.78) 1.33 (0.86-2.04) 1.37 (0.91-2.07) 2.03 (1.44-2.87)	Hypertension, elevated fasting glucose, sex, smoking, alcohol, history of MI, regular moderate-intensity physical activity, Swedish-born
Kokubo Y et al, 2015, Japan	The Suita Study	1989-1996/1996-1998/1992-2006 – 2013, 12.8 years	6906 men and women, age 30-84 years: 253 AF cases	Measured	BMI	<18.5 18.5-<25.0 ≥25.0	1.02 (0.60-1.72) 1.00 1.35 (1.01-1.80)	Age, sex, blood pressure, smoking, drinking, hyperlipidemia, diabetes mellitus, impaired fasting glucose

		follow-up						
Berkovitch A et al, 2016, Israel	The Institute for Medical Screening of the Chaim Sheba Medical Center	2000 - NA, 6.4 years follow-up	18290 men and women, mean age 48.9 years: 288 AF cases	Measured	BMI	18.5-24.9 25.0-29.9 ≥30.0	1.00 1.49 (1.11-2.00) 2.34 (1.64-3.34)	Age, sex, IHD, diabetes mellitus, hypertension, LDL cholesterol, HDL cholesterol, physical activity
Diouf I et al, 2016, Australia	Australian Diabetes, Obesity and Lifestyle study cohort	1999/2000 - 2004/2005, 5 years follow-up	5389 men and women, age ≥35 years: 53 AF cases	Measured	BMI	18.5-24.9 25.0-29.9 ≥30.0	1.0 1.0 (0.7-1.5) 1.4 (0.5-4.2)	Age, sex, smoking status, usual number of alcoholic drinks, physical activity, level of education
Karas MG et al, 2016, USA	Cardiovascular Health Study	1989-2008, 13 years follow-up	4276 men and women, age ≥65 years: 1050 AF cases	Measured	BMI Weight Waist circumference Hip circumference WHR Fat mass Fat-free mass	Per 4.7 units Per 14.6 kg Per 13.2 cm Per 10.0 cm Per 0.09 units Per 10.8 kg Per 9.2 kg	1.08 (1.02-1.15) 1.21 (1.13-1.29) 1.14 (1.07-1.22) 1.17 (1.10-1.24) 1.02 (0.96-1.10) 1.16 (1.09-1.24) 1.26 (1.13-1.40)	Age, sex, race, smoking status
Kang SH et al, 2016, Korea	Korea National Health Insurance Corporation Study	2003-2004 - NA, 9.0 years follow-up	132063 men and women, age ≥40 years: 3237 AF cases	Measured	BMI, all BMI, men BMI, women	<18.5 18.5-22.9 23.0-24.9 25.0-29.9 ≥30.0 <18.5 18.5-22.9 23.0-24.9 25.0-29.9 ≥30.0 <18.5 18.5-22.9 23.0-24.9 25.0-29.9 ≥30.0	1.23 (1.00-1.52) 1.00 1.15 (1.05-1.27) 1.26 (1.16-1.38) 2.20 (1.87-2.59) 1.17 (0.90-1.53) 1.00 1.09 (0.97-1.23) 1.22 (1.09-1.37) 2.17 (1.71-2.75) 1.32 (0.95-1.84) 1.00 1.24 (1.07-1.44) 1.30 (1.13-1.50) 2.22 (1.77-2.79)	Age, sex, alcohol, exercise frequency, hypertension, diabetes, ischemic heart disease, congestive heart failure, chronic kidney disease, chronic lung disease, malignancy, thyroid disease, fasting glucose, urine protein
Lee JJ et al, 2016, USA	Framingham Heart Study Offspring and Third-Generation	1998-2001 and 2002-2005 - NA, 9.7 years follow-up	2135 men and women, age : 162 AF cases	Measured	Pericardial fat Intrathoracic fat Abdominal visceral fat	Per 46 cm ³ Per 63 cm ³ Per 1061 cm ³	1.13 (0.99-1.30) 1.19 (1.01-1.40) 1.09 (0.93-1.28)	Age, sex, SBP, DBP, current smoking, antihypertensive medication use, diabetes mellitus, history of heart failure, history of myocardial infarction

	Cohorts							
--	---------	--	--	--	--	--	--	--

AF=atrial fibrillation, BMI=body mass index, CHD=coronary heart disease, CHF=congestive heart failure, COPD=chronic obstructive pulmonary disease,
CVD=cardiovascular disease, DBP=diastolic blood pressure, ECG=electrocardiogram, FEV₁=forced expiratory volume in 1 second, FH=family history,
GFR=glomerular filtration rate, HDL=high density lipoprotein, HF=heart failure, HOMA-IR= homeostatic model assessment of insulin resistance, IHD=ischemic heart
disease, LDL=low-density lipoprotein, LVH=left ventricular hypertrophy, MH=metabolically health, MI=myocardial infarction, MUH=metabolically unhealthy,
NA=not available SBP=systolic blood pressure, WHI=Women's Health Initiative, WHR= waist-to-hip ratio

Supplementary Table 5. Table of RRs and 95% CIs from nonlinear dose-response analysis of BMI and atrial fibrillation

	Atrial fibrillation
BMI	RR (95% CI)
15.0	0.98 (0.90-1.06)
17.5	0.96 (0.93-1.00)
20.0	1.00
22.5	1.09 (1.04-1.13)
25.0	1.21 (1.13-1.31)
27.5	1.39 (1.25-1.56)
30.0	1.63 (1.40-1.89)
32.5	1.93 (1.60-2.32)
35.0	2.32 (1.86-2.90)
37.5	2.82 (2.18-3.66)
40.0	3.45 (2.56-4.64)

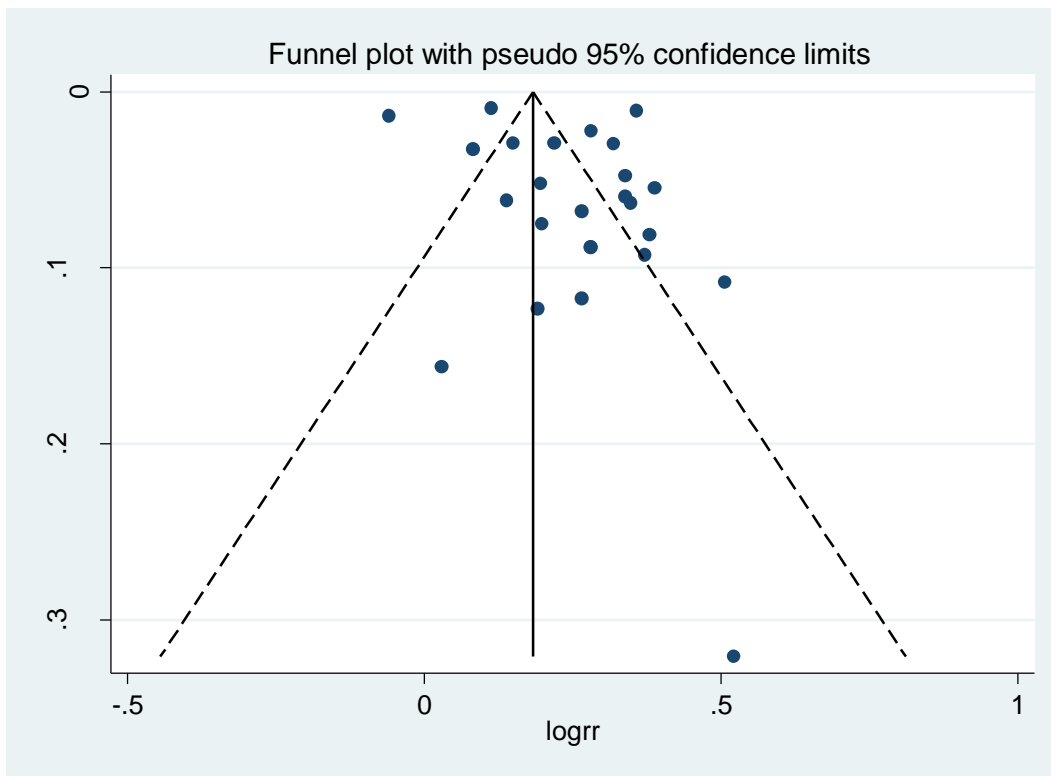
Supplementary Table 6. Table of RRs and 95% CIs from nonlinear dose-response analysis of waist circumference and atrial fibrillation

Men	
WC	RR (95% CI)
76 cm	1.00
80	1.01 (0.89-1.15)
85	1.07 (0.85-1.35)
90	1.18 (0.88-1.57)
95	1.34 (0.97-1.84)
100	1.55 (1.13-2.14)
105	1.84 (1.36-2.49)
110	2.22 (1.69-2.92)

Supplementary Table 7. Table of summary relative risks (95% CIs) from the current meta-analysis

Adiposity variable	N	Increment	Summary RR (95% CI)	I ²	P _{heterogeneity}
BMI	25	5 kg/m ²	1.28 (1.20-1.38)	97%	<0.0001
Waist circumference	5	10 cm	1.18 (1.12-1.25)	73%	0.005
Waist-to-hip ratio	4	0.1 units	1.09 (1.02-1.16)	44%	0.15
Hip circumference	3	10 cm	1.32 (1.16-1.51)	91%	<0.0001
Weight	10	5 kg	1.10 (1.08-1.13)	74%	<0.0001
Weight gain	2	5 kg	1.08 (0.97-1.19)	86%	0.007
Body fat mass	4	5 kg	1.09 (1.02-1.16)	94%	<0.0001
Body fat percentage	3	10%	1.10 (0.92-1.33)	90%	<0.0001

Supplementary Figure 1. Funnel plot for BMI and atrial fibrillation incidence



Moose checklist

Reporting of background should include	Page
Problem definition	3-4
Hypothesis statement	4
Description of study outcome(s)	3-4, 5
Type of exposure or intervention used	3-4, 5
Type of study designs used	3-4, 5
Study population	5, Supplementary Table 4
Reporting of search strategy should include	
Qualifications of searchers (eg, librarians and investigators)	5, Investigators
Search strategy, including time period included in the synthesis and keywords	Supplementary Table 1 and 2
Effort to include all available studies, including contact with authors	No contact with authors
Databases and registries searched	5
Search software used, name and version, including special features used (eg, explosion)	5, Supplementary Table 1 and 2
Use of hand searching (eg, reference lists of obtained articles)	5
List of citations located and those excluded, including justification	Supplementary Table 3
Method of addressing articles published in languages other than English	5, only English language publications were included
Method of handling abstracts and unpublished studies	5, not included
Description of any contact with authors	No contact with authors
Reporting of methods should include	
Description of relevance or appropriateness of studies assembled for assessing the hypothesis to be tested	5-6
Rationale for the selection and coding of data (eg, sound clinical principles or convenience)	5-6
Documentation of how data were classified and coded (eg, multiple raters, blinding, and interrater reliability)	6
Assessment of confounding (eg, comparability of cases and controls in studies where appropriate)	Table 1, Supplementary Table 4
Assessment of study quality, including blinding of quality assessors; stratification or regression on possible predictors of study results	5, 11, Table 1
Assessment of heterogeneity	7

Description of statistical methods (eg, complete description of fixed or random effects models, justification of whether the chosen models account for predictors of study results, dose-response models, or cumulative meta-analysis) in sufficient detail to be replicated	6-7
Provision of appropriate tables and graphics	8-11, Supplementary Table 1-4
Reporting of results should include	
Graphic summarizing individual study estimates and overall estimate	8-11, Figure 2-5, Table 1
Table giving descriptive information for each study included	Supplementary Table 4
Results of sensitivity testing (eg, subgroup analysis)	10-11, Table 1
Indication of statistical uncertainty of findings	8-11
Reporting of discussion should include	
Quantitative assessment of bias (eg, publication bias)	14
Justification for exclusion (eg, exclusion of non-English-language citations)	No relevant non-English publications were identified
Assessment of quality of included studies	15
Reporting of conclusions should include	
Consideration of alternative explanations for observed results	13-14
Generalization of the conclusions (ie, appropriate for the data presented and within the domain of the literature review)	14-15
Guidelines for future research	15
Disclosure of funding source	16