



## BRIEF REPORT

# Occurrence and genetic diversity of human cosavirus in influent and effluent of wastewater treatment plants in Arizona, United States

Masaaki Kitajima<sup>1,3</sup> · Andri T. Rachmadi<sup>1,4</sup> · Brandon C. Iker<sup>1,5</sup> · Eiji Haramoto<sup>2</sup> · Ian L. Pepper<sup>1</sup> · Charles P. Gerba<sup>1</sup>

Received: 6 January 2015 / Accepted: 18 April 2015 / Published online: 5 May 2015  
© Springer-Verlag Wien 2015

**Abstract** Human cosavirus (HCoSV) is a novel member of the family *Picornaviridae*. We investigated the prevalence and genetic diversity of HCoSV in influent and effluent wastewater in Arizona over a 12-month period, from August 2011 to July 2012. HCoSV sequences were identified in six (25 %) influent samples and one (4 %) effluent sample, with the highest concentration of  $3.24 \times 10^5$  and  $1.54 \times 10^3$  copies/liter in influent and effluent, respectively. The strains were characterized based on their 5' untranslated region and classified into species A and D, demonstrating that genetically heterogeneous HCoSV were circulating with a clear temporal shift of predominant strains in the study area.

**Keywords** Cosavirus · qPCR · Wastewater · Nested PCR · Phylogenetic analysis

## Introduction

Human cosavirus (human *common stool associated picornavirus*, HCoSV) is a novel member of the family *Picornaviridae* and the genus *Cosavirus* [1]. HCoSV was first identified in 2008 in the feces of South Asian children with non-polio acute flaccid paralysis (AFP) and healthy controls [1]. The genus is currently divided into six genetically distinct species (A-F) with a total of more than 30 genotypes [2]. Similar to cardioviruses, which are close relatives of picornaviruses, HCoSV has been frequently detected in the feces of symptomatic as well as asymptomatic subjects, and thus their role in human enteric disease remains unclear [3]. This is partly because there have been only a limited number of epidemiological studies on this emerging virus.

Examining domestic wastewater has been considered an effective approach to understand the actual prevalence and epidemiology of enteric viruses, and a number of studies targeting various types of virus in wastewater have been carried out [4, 5]. In one study conducted in the United States, HCoSV was detected in 38 % of raw sewage samples tested [6]. More recently, Haramoto and Otagiri reported the detection of HCoSV in wastewater and river water in Japan, demonstrating a high prevalence in tested samples (raw sewage, 71 %; secondary-treated sewage, 29 %; river water, 29 %) with the highest concentration of  $2.80 \times 10^6$  copies/liter in raw sewage [7]. Moreover, our recent work revealed the presence of another emerging picornavirus potentially associated with infantile gastroenteritis and AFP, namely, salivirus/klassevirus, in wastewater samples collected from Arizona, the United States [8]. These recent findings prompted us to carry out a year-long investigation on the occurrence and genetic diversity of HCoSV in wastewater in Arizona. In the present

✉ Masaaki Kitajima  
kitajima@smart.mit.edu

<sup>1</sup> Department of Soil, Water and Environmental Science, The University of Arizona, 1117 E. Lowell St., Tucson, AZ 85721, USA

<sup>2</sup> International Research Center for River Basin Environment, University of Yamanashi, 4-3-11 Takeda, Kofu, Yamanashi 400-8511, Japan

<sup>3</sup> Present Address: Center for Environmental Sensing and Modeling, Singapore-MIT Alliance for Research and Technology, 1 CREATE Way, #09-03 CREATE Tower, Singapore 138602, Singapore

<sup>4</sup> Present Address: Institute of Research and Standardization, The Ministry of Industry, Panglima Batur Barat Street No. 2, Banjarbaru, South Kalimantan, Republic of Indonesia

<sup>5</sup> Present Address: Amway, 7575 Fulton Street East, Ada, MI 49355-0001, USA

study, we quantified HCoV genomes in wastewater using quantitative PCR (qPCR) and phylogenetically characterized the virus strains based on their partial 5' untranslated region (UTR) sequences.

Wastewater sampling was conducted monthly from August 2011 to July 2012 at two wastewater treatment plants (plant A and B, utilizing activated sludge and trickling filter, respectively) located in southern Arizona. A total of 48 grab samples were collected, which consisted of 12 influent and 12 effluent samples each from two plants. Viruses in the wastewater samples (100 mL influent and 1,000 mL effluent) were concentrated using an electronegative filter (cat. no. HAWP-090-00; Merck Millipore, Darmstadt, Germany) and a Centriprep YM-50 device (Merck Millipore) to obtain a final volume of 650  $\mu$ L as described previously [9]. More details of the characteristics of each plant and sampling and virus concentration procedures are described elsewhere [10]. Viral nucleic acid was extracted and purified using a ZR Viral DNA/RNA Kit (Zymo Research, Irvine, CA), according to the manufacturer's instructions. The reverse transcription (RT) reaction was performed using a High Capacity cDNA Reverse Transcription Kit (Applied Biosystems, Foster City, CA).

The presence of HCoV genomes was first examined by TaqMan-based qPCR [11], using a LightCycler<sup>®</sup> 480 Real-Time PCR Instrument II (Roche Diagnostics, Mannheim, Germany). The genome copy numbers of HCoV were determined based on a standard curve prepared with ten-fold serial dilutions of plasmid DNA containing the partial 5' UTR sequence of strain HCoV-A1 (GenBank accession number: J438902). The qPCR reactions were performed in duplicate (i.e., two PCR tubes were used for each sample), and the sample was considered positive only when a fluorescent signal with sufficient intensity was obtained from both tubes and the average crossing point (*C<sub>p</sub>*) value was not more than 40, as recommended by the guidelines described elsewhere [12].

The nested PCR assay using DKV-N5U-F1, -R2, -F2, and -R3 primers targeting a 316-bp region of 5' UTR was then performed using Ex *Taq* DNA polymerase (TaKaRa Bio Co., Shiga, Japan), as described previously [1]. The second PCR products were separated by electrophoresis on a 2 % agarose gel and visualized under a UV lamp after ethidium bromide staining. All of the second PCR products with expected size were excised from the gel and cloned into the pCR4-TOPO vector (Invitrogen, Carlsbad, CA). Eight to 15 colonies (clones) per sample were selected, and both strands of direct colony PCR products were sequenced using a BigDye Cycle Sequencing Kit version 3.1 and a 3730xl Genetic Analyzer (Applied Biosystems). Nucleotide sequences were assembled using the program Sequencher<sup>™</sup> version 5.0.1 (Gene Codes Corporation, Ann

Arbor, MI, USA) and aligned with Clustal W version 1.83 (<http://clustalw.ddbj.nig.ac.jp/top-e.html>). Genetic distances were calculated by Kimura's two-parameter method [13], and a phylogenetic tree from a bootstrap analysis with 1,000 replicates was generated by the neighbor-joining method.

By using the RT-qPCR assay, HCoV genomes were detected in five (42 %) and six (50 %) influent samples from plant A and B, respectively, and in two (17 %) effluent samples from both plants. Different temporal occurrence between plant A and B was observed based on the RT-qPCR detection; HCoV genomes were frequently detected during colder months at plant A, whereas samples from plant B showed a high detection rate during warmer months (Table 1). This observation from two plants located in the same region implies the occurrence of sporadic and temporary HCoV infections within the study area. The influent sample collected from plant B in November 2011 exhibited the highest HCoV genome concentration of  $3.24 \times 10^5$  copies/liter (Table 1). Haramoto and Otagiri reported that HCoV was detected by the same RT-qPCR assay in 71 % (10/14) of raw wastewater and 29 % (4/14) of treated wastewater samples in Japan, with concentrations of  $4.47 \times 10^4$  to  $2.80 \times 10^6$  and  $3.54 \times 10^3$  to  $7.50 \times 10^4$  copies/L, respectively [7]. Detection rates as well as concentrations of HCoV genomes observed in our wastewater samples in Arizona were generally lower than those in wastewater samples in Japan. One of the possible reasons of this difference in the occurrence of HCoV in wastewater could be a difference in the incidence of HCoV infection within the two countries/regions. Use of murine norovirus (MNV S7-PP3 strain; kindly provided by Dr. Y. Tohya, Nihon University, Kanagawa, Japan) as a process control (not used to adjust the viral genome copy numbers) showed no substantial inhibition in the extraction-RT-qPCR process in any of the wastewater samples tested in this study (mean recovery efficiency of more than 75 %; detailed results were reported in our previous study [10]).

By use of the 5' UTR nested RT-PCR assay, seven (15 %) samples tested positive, of which six were positive by the RT-qPCR assay as well, and only one nested-PCR-positive sample was qPCR negative (effluent from plant B in December 2011; Table 1). The overall detection ratio by the nested PCR assay was lower than that of qPCR assay (15/48, 31 %), probably because the qPCR assay is more sensitive than the nested PCR assay when applied to environmental samples.

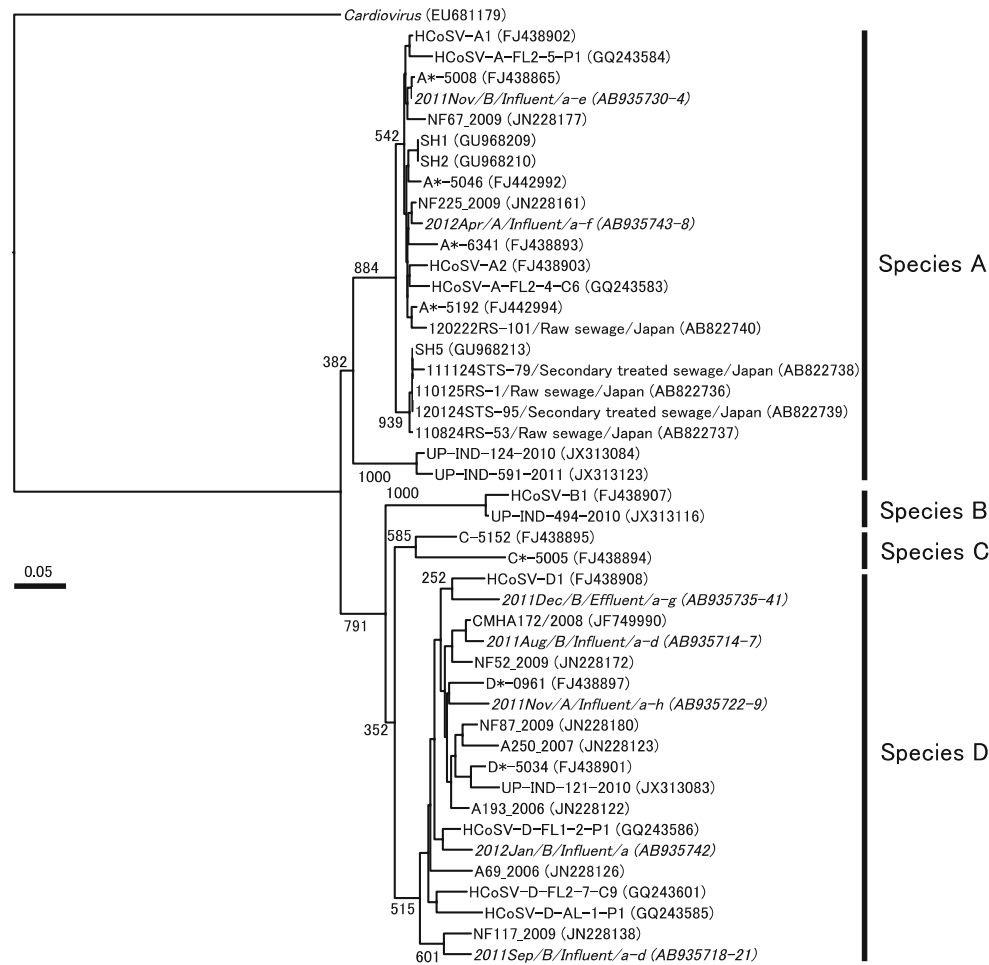
Based on nucleotide sequencing of a total of 76 selected clones (8 to 15 clones per sample), we identified a total of 35 HCoV sequences (1 to 8 different sequences per sample), which were classified into species A and D (Table 1, Fig. 1). This result agrees with previous studies

**Table 1** Detection of human cosavirus in wastewater in Arizona, USA

Year/Month	Plant A				Plant B			
	Influent		Effluent		Influent		Effluent	
	qPCR <sup>a</sup>	PCR-sequencing <sup>b</sup>	qPCR	Copies/L	qPCR	Copies/L	qPCR	Copies/L
2011/Aug	—	—	—	—	38.9	$5.21 \times 10^4$	—	—
Sept	—	—	—	—	37.8	$4.16 \times 10^4$	—	—
Oct	—	—	—	—	37.7	$8.50 \times 10^4$	—	—
Nov	38.4	$2.13 \times 10^4$	Species D	—	36.0	$3.24 \times 10^5$	Species A	—
Dec	—	—	—	—	—	—	—	Species D
2012/Jan	37.8	$5.43 \times 10^4$	—	—	37.1	$9.69 \times 10^4$	Species D	—
Feb	37.1	$1.03 \times 10^5$	—	37.0	$8.88 \times 10^2$	—	—	$8.44 \times 10^2$
Mar	37.0	$1.09 \times 10^5$	—	—	—	—	—	—
Apr	36.7	$1.29 \times 10^5$	Species A	—	—	—	—	—
May	—	—	—	—	—	—	—	—
June	—	—	—	35.9	$1.54 \times 10^3$	—	—	—
July	—	—	—	—	37.3	$9.00 \times 10^4$	—	$2.40 \times 10^2$
% positive	42 %	17 %	17 %	17 %	50 %	33 %	33 %	8 %

<sup>a</sup> Cp results indicate average values from two qPCR tubes. The concentrations of HCoSV genomes were calculated from average cDNA copy numbers of the two qPCR tubes

<sup>b</sup> Nested PCR followed by cloning and nucleotide sequencing. HCoSV species identified by this method are indicated. —, negative



**Fig. 1** Phylogenetic tree for HCoV strains using 276 nucleotides of the 5' UTR gene sequences. The tree was generated by the neighbor-joining method with representative strains among slightly different sequences derived from the same wastewater sample as well as reference strains. The numbers on each branch indicate the bootstrap

values obtained from a bootstrap analysis with 1,000 replicates, and the scale represents nucleotide substitutions per site. Strains shown in *italic* are representative HCoV strains identified in the present study, representing the year and month of sample collection

reporting the predominance of species A and D in clinical samples [1, 2]. The HCoV strains identified in the same wastewater sample belonged to the same genetic cluster (only representative strains among the slightly different sequences derived from the same sample are shown in Figure 1), which exhibits low genetic diversity among strains in a single wastewater sample. However, the strains identified in different months and treatment plants were genetically distinct from each other (Fig. 1), demonstrating the heterogeneity of HCoV strains causing infections and a temporal shift in the predominant species/strains in the study area.

Viral metagenomic analysis has been a powerful tool for discovering new viral pathogens and determining the diversity of viruses in clinical and environmental samples. In fact, this allowed the discovery of HCoV in human stool samples [1] and in subsequent identification in sewage and

biosolids [14, 15]. However, clinical and environmental surveillance of viral pathogens of particular interest/importance using a targeted detection approach, such as qPCR quantification and target-specific PCR amplicon sequencing, are still necessary and complementary to the metagenomic strategy once new viruses are discovered and their genetic information becomes available. In addition, a recent study reported the *in vitro* propagation and infectivity assay for HCoV using a cell culture system [16]. This may allow development of a strategy to assess the infectivity of HCoV in environmental samples using cell culture assays and/or integrated cell culture PCR (ICC-PCR), which will contribute to a better understanding of environmental persistence and public health risks of HCoV, if any, in the future.

Until now, only two studies have reported molecular detection of HCoV in environmental water samples in the

United States and Japan [6, 7]. The present study describes additional evidence of the prevalence and genetic diversity of HCoV in wastewater based on a year-long study in southern Arizona, United States. Our results suggested that HCoV of species A and D was circulating among humans and aquatic environments with a clear temporal shift in the predominant strains in the study area. Further environmental studies, even in combination with clinical studies, are required worldwide to understand the molecular epidemiology and geographical distribution of this emerging virus with a currently unknown etiological role in human enteric diseases.

#### Nucleotide sequence accession numbers

The nucleotide sequences determined in the present study have been deposited in GenBank under accession numbers AB935714–AB935748.

**Acknowledgments** The authors would like to thank Kelly Reynolds at the University of Arizona Mel and Enid Zuckerman College of Public Health for her laboratory contributions, and two anonymous wastewater treatment plants in southern Arizona for providing wastewater samples.

This study was partly supported by the National Science Foundation (NSF) Water and Environmental Technology (WET) Center, The University of Arizona.

We also wish to acknowledge the support of the Japan Society for the Promotion of Science (JSPS) to Masaaki Kitajima, under JSPS Postdoctoral Fellowships for Research Abroad (FY 2011 no. 517). Andri T. Rachmadi is a recipient of a 2012 Fulbright Master of Science and Technology Scholarship.

#### References

- Kapoor A, Victoria J, Simmonds P et al (2008) A highly prevalent and genetically diversified *Picornaviridae* genus in South Asian children. *Proc Natl Acad Sci USA* 105:20482–20487. doi:10.1073/pnas.0807979105
- Kapusinszky B, Phan TG, Kapoor A, Delwart E (2012) Genetic diversity of the genus *Cosavirus* in the family *Picornaviridae*: a new species, recombination, and 26 new genotypes. *PLoS ONE* 7:e36685. doi:10.1371/journal.pone.0036685
- Tapparel C, Siegrist F, Petty TJ, Kaiser L (2013) Picornavirus and enterovirus diversity with associated human diseases. *Infect Genet Evol* 14:282–293. doi:10.1016/j.meegid.2012.10.016
- Sinclair RG, Choi CY, Riley MR, Gerba CP (2008) Pathogen surveillance through monitoring of sewer systems. *Adv Appl Microbiol* 65:249–269. doi:10.1016/S0065-2164(08)00609-6
- Gerba CP, Kitajima M, Iker BC (2013) Viral presence in wastewater and sewage and control methods. In: Cook N (ed) *Viruses food water risks, surveillance control*. Woodhead Publishing Ltd., Cambridge, pp 293–315
- Blinkova O, Rosario K, Li L et al (2009) Frequent detection of highly diverse variants of cardiovirus, cosavirus, bocavirus, and circovirus in sewage samples collected in the United States. *J Clin Microbiol* 47:3507–3513. doi:10.1128/JCM.01062-09
- Haramoto E, Otagiri M (2014) Occurrence of human cosavirus in wastewater and river water in Japan. *Food Environ Virol* 6:62–66. doi:10.1007/s12560-013-9120-6
- Kitajima M, Haramoto E, Rachmadi AT et al (2014) Quantification and genetic analysis of salivirus/klassevirus in wastewater in Arizona, USA. *Food Environ Virol* 6:213–216. doi:10.1007/s12560-014-9148-2
- Katayama H, Shimasaki A, Ohgaki S (2002) Development of a virus concentration method and its application to detection of enterovirus and Norwalk virus from coastal seawater. *Appl Environ Microbiol* 68:1033–1039. doi:10.1128/AEM.68.3.1033
- Kitajima M, Iker BC, Pepper IL, Gerba CP (2014) Relative abundance and treatment reduction of viruses during wastewater treatment processes—identification of potential viral indicators. *Sci Total Environ* 489:290–296. doi:10.1016/j.scitotenv.2014.04.087
- Stöcker A, Frederico B, Dominguez DC et al (2012) Cosavirus infection in persons with and without gastroenteritis, Brazil. *Emerg Infect Dis* 18:656–659. doi:10.3201/eid1804.111415
- Bustin SA, Benes V, Garson JA et al (2009) The MIQE guidelines: minimum information for publication of quantitative real-time PCR experiments. *Clin Chem* 55:611–622. doi:10.1373/clinchem.2008.112797
- Kimura M (1980) A simple method for estimating evolutionary rates of base substitutions through comparative studies of nucleotide sequences. *J Mol Evol* 16:111–120
- Ng TFF, Marine R, Wang C et al (2012) High variety of known and new RNA and DNA viruses of diverse origins in untreated sewage. *J Virol* 86:12161–12175. doi:10.1128/JVI.00869-12
- Bibby K, Peccia J (2013) Identification of viral pathogen diversity in sewage sludge by metagenome analysis. *Environ Sci Technol* 47:1945–1951. doi:10.1021/es305181x
- Rezig D, Touzi H, Meddeb Z, Triki H (2014) Cytopathic effect of *Human cosavirus* (HCoV) on primary cell cultures of human embryonic lung MRC5. *J Virol Methods* 207:12–15. doi:10.1016/j.jviromet.2014.06.011