

# Context-Specific Target Definition in Influenza A Virus Hemagglutinin-Glycan Receptor Interactions

Zachary Shriver,<sup>1</sup> Rahul Raman,<sup>1</sup> Karthik Viswanathan,<sup>1</sup> and Ram Sasisekharan<sup>1,\*</sup><sup>1</sup>Harvard-MIT Division of Health Sciences and Technology, Koch Institute for Integrative Cancer Research, Department of Biological Engineering, Massachusetts Institute of Technology, Cambridge, MA 02139, USA\*Correspondence: [rams@mit.edu](mailto:rams@mit.edu)

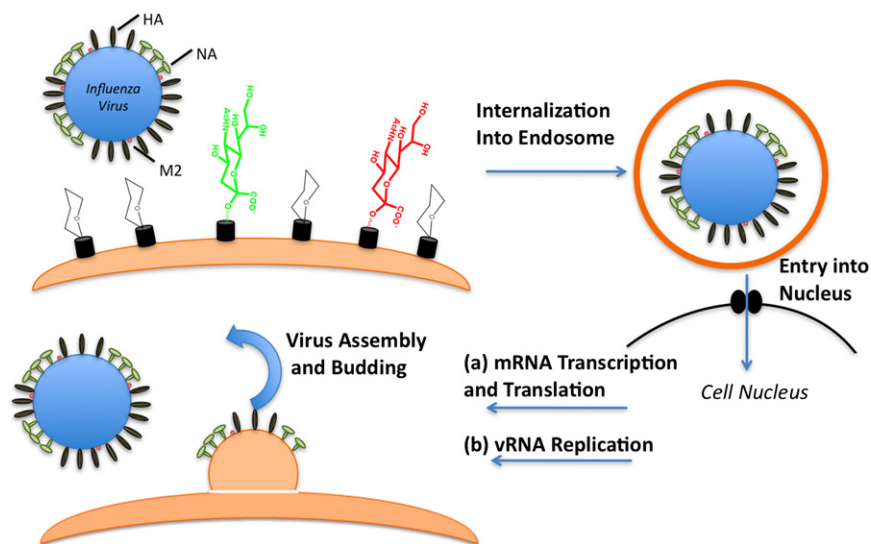
DOI 10.1016/j.chembiol.2009.08.002

Protein-glycan interactions are important regulators of a variety of biological processes, ranging from immune recognition to anticoagulation. An important area of active research is directed toward understanding the role of host cell surface glycans as recognition sites for pathogen protein receptors. Recognition of cell surface glycans is a widely employed strategy for a variety of pathogens, including bacteria, parasites, and viruses. We present here a representative example of such an interaction: the binding of influenza A hemagglutinin (HA) to specific sialylated glycans on the cell surface of human upper airway epithelial cells, which initiates the infection cycle. We detail a generalizable strategy to understand the nature of protein-glycan interactions both structurally and biochemically, using HA as a model system. This strategy combines a *top-down* approach using available structural information to define important contacts between glycans and HA, with a *bottom-up* approach using data-mining and informatics approaches to identify the common motifs that distinguish glycan binders from nonbinders. By probing protein-glycan interactions simultaneously through top-down and bottom-up approaches, we can scientifically validate a series of observations. This in turn provides additional confidence and surmounts known challenges in the study of protein-glycan interactions, such as accounting for multivalency, and thus truly defines concepts such as *specificity*, *affinity*, and *avidity*. With the advent of new technologies for glycomics—including glycan arrays, data-mining solutions, and robust algorithms to model protein-glycan interactions—we anticipate that such combination approaches will become tractable for a wide variety of protein-glycan interactions.

## Introduction

Complex glycans at the surface of cells and on circulating signaling molecules play a fundamental role in determining how a cell “sees” and responds to external events. In this capacity, through interactions with proteins, complex glycans modulate a variety of biological processes including pathogen recognition, innate and acquired immunity (Alexopoulou et al., 2007; Crocker et al., 2007; Rudd et al., 2004; van Die and Cummings, 2006), glycoprotein targeting (Bhatia and Mukhopadhyay, 1999; Helenius and Aebi, 2004; Varki et al., 2008), adhesion (Kawashima et al., 2005; Lowe, 2002; Taylor and Drickamer, 2007; Wang et al., 2005) and trafficking (Crocker, 2005; Smithson et al., 2001). Obtaining a complete picture of a biological process or understanding higher-level organization of a biological system accordingly requires decoding protein-glycan interactions. In recognition of this practical need, there has been a surge in the development of strategies for chemical and chemoenzymatic synthesis of diverse glycan structures (Blixt and Razi, 2006; Hanson et al., 2004; Seeberger and Werz, 2007) that represent the common terminal motifs displayed as part of N- and O-linked glycans and glycolipids. To properly present these glycans to their protein partners, synthetic glycan motifs have been anchored to a variety of platforms including polymeric backbones such as polyglutamic acid and polyacrylamide, on dendrimers, and more recently on glycan microarrays (Bovin et al., 2004; Collins and Paulson, 2004; Gambaryan et al., 2006; Mammen et al., 1995; Totani et al., 2003).

Despite these advances in the development of platforms to study glycan-protein interactions, challenges remain in defining glycan targets for the purpose of bridging the biochemical and biophysical specificity of glycan-protein interactions with the biological functions modulated by these interactions. In the case of glycan-protein interactions, one size does not fit all. Strategies that have proven informative in the areas of genomics or proteomics may or may not facilitate our description of the glycome for several reasons. Glycan-protein interactions, leading to either the activation or inhibition of a biological response, are often not binary but rather involve more subtle mediation of a signaling pathway. In addition, glycan-protein interactions typically involve *multivalency* with respect to both the protein and the glycan, 1:1 monovalent complexes are often weak and display dissociation constants on the order of 1 to 1000  $\mu\text{M}$ . Biochemical/biophysical descriptions of protein-glycan interactions therefore depend both on context and experimental design. In this framework, the careful description of experimental results, including an understanding of both the strengths and limitations of an approach, is appreciated. Finally, it is becoming clear that there are both finer and coarser determinants of the specificity of a given protein-glycan interaction than the simple monosaccharide sequence of a glycan. Describing a glycan-binding sequence by its monosaccharide composition and the linkages between the monosaccharides, although important, in most cases does not afford the same descriptive capacity as it does for other biopolymers.



**Figure 1. The Influenza Infection Cycle**

HA on the surface of the virus binds glycans terminated by sialic acid with a specific linkage (green or red), initiating fusion of the virus with the host cell. This interaction is highly specific and is governed by the type of sialic acid linkage, the underlying sugars and branching pattern of the glycan receptors. The other viral surface proteins are the neuraminidase (NA) and the ion channel protein M2. Once the virus is internalized in the cell, fusion between viral and nuclear membranes occurs, and complexes of RNA and proteins termed viral ribonucleoprotein complexes (vRNPs) are transported into the nucleus of the host cell. The transcription to mRNA takes place in the host cell nucleus followed by export and protein synthesis. Also within the nucleus there is transcription of the RNA genome. Assembly of progeny vRNPs then occurs, with export, assembly of the virus progeny, and finally budding of the newly formed virus particles.

Ensuring an accurate and complete picture of protein-glycan interactions despite these difficulties demands studies that integrate the basic biochemistry and molecular biology of the system with analytical approaches, while simultaneously enabling the appropriate translation to the biology. One of the best-studied systems of glycan-protein interactions modulating a biological function is that of the role of influenza A virus hemagglutinin (HA)-glycan interactions in viral pathogenesis. This review presents an overview of the various technologies that have been used for glycan receptor target definition for HA, their strengths and limitations, and how an integrated framework enabled the bridging of HA-glycan interactions with the host adaptation of the virus. This integrated approach could serve as a framework for target definition in other protein-glycan interactions.

### Overview of Influenza A Viruses

Influenza A virus is a negative strain RNA virus with eight gene segments. Three of the genes—hemagglutinin (HA), neuraminidase (NA), and the polymerase (PB)—have been shown to be critical for infection and human-to-human transmission (Palese, 2004; Pappas et al., 2008; Tumpey et al., 2007) (Figure 1). Within influenza A, five of the genome segments encoding the nucleocapsid protein (NP), the matrix proteins (M1 and M2), the nonstructural proteins (NS1 and NS2), and polymerase proteins (PB1, PB2 and PA) have maintained a relatively unbroken evolutionary history in humans. In contrast, the two genes encoding the major cell surface proteins (HA and NA) have been subjected to substantial evolutionary pressure, including mutation (*antigenic drift*) and wholesale reassortment (*antigenic shift*). Due to their variability, strains of influenza virus are identified based on their serotype of HA and NA. There are currently 16 known serotypes of HA and nine of NA.

At the moment there is substantial public health concern surrounding the prospect of another influenza A pandemic and its associated potential global implications. The past century has seen four influenza pandemics. The first and most severe occurred in 1918, involved an H1N1 virus, and led to the death of at least 40 million people worldwide. Less serious pandemics occurred in 1957, 1968, and 1977. Notably, in real time has been

the advent of a reassorted H1N1 virus, viz., 2009 H1N1 or “swine” flu, which is antigenically dissimilar from seasonal, circulating H1N1s and which has already been declared a pandemic by the World Health Organization. Viruses containing the 16 HA and nine NA serotypes are naturally present in wild aquatic bird populations where they exist commensally without causing disease, allowing birds to become a reservoir for influenza strains. This is of specific concern because of the influenza pandemics of the last century, those that arose from H2N2 (1957) and H3N2 (1968), were avian-human reassortments that resulted in the humanization of an avian-adapted virus and efficient human-to-human transmission. Those genetic reassortments that led to an avian-to-human switch yield a number of important scientific and medical questions, not the least of which is what changes lead away from infectivity and propagation in avian species and toward human transmissibility? In light of a particular influenza strain, H5N1 or the so-called bird flu, addressing these questions becomes more critical. Transmission of avian H5N1 influenza viruses to humans has been observed thus far only upon direct contact with infected poultry; the virus has not yet demonstrated efficient human-to-human transmission ability. Given that human infectivity has occurred and appreciating that this virus strain is highly lethal (estimates are as high as ~60% of infected individuals), the importance of comprehending the mechanism and specificity of viral entry and infection as well as identifying additional strategies for intervention is clear.

### HA-Glycan Interactions: Description and Biological Importance

The influenza A infection cycle can be described as a three-stage process (Figure 1). The first stage is the attachment of HA of the virus to complex glycan receptors on the host cells. Following attachment, the virus is internalized by endocytosis where structural changes in HA produce the fusion of the viral membrane with the endosomal membrane. Internalization facilitates activation of the ion channel activity of M2 and transport of the viral RNA to the nucleus. In the nucleus, viral RNA undergoes replication and transcription. Newly synthesized proteins HA and NA are secreted through the Golgi to the cell surface. Other proteins

are transported to the nucleus where they associate with the synthesized transcripts of viral RNA to form virions. These virions, with HA and NA on their surface, then bulge from the cell membrane. The action of NA, which cleaves the sialic-acid-capped glycan structure and eliminates the interaction of the host cell glycans with the newly formed virus particle, facilitates the release of progeny viruses from the host cells.

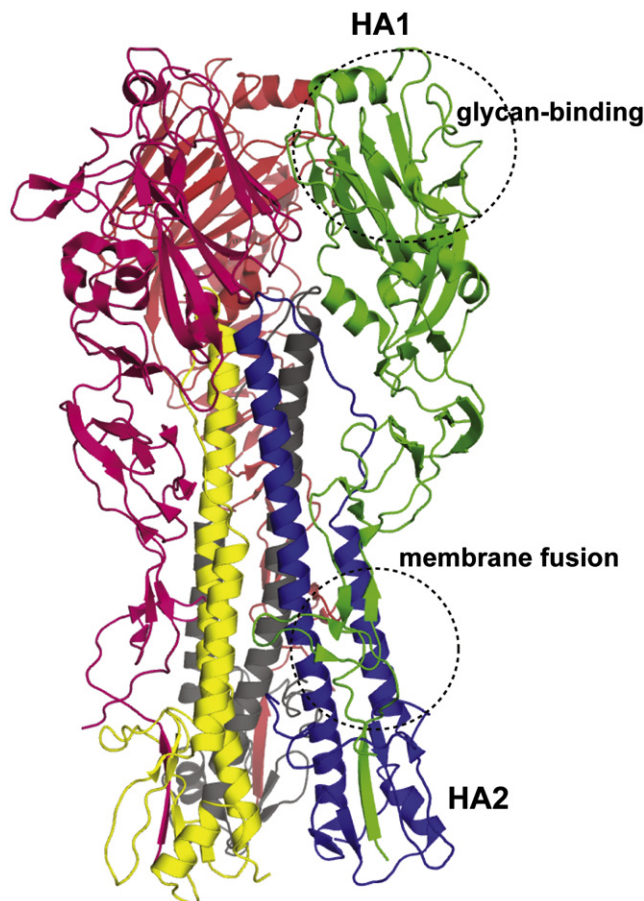
In the context of infectivity, the HA-glycan interaction is one of the most critical components governing virus selectivity. HA itself is a homotrimer (Figure 2); each monomer is synthesized as a single polypeptide that contains a proteolytic site, that is cleaved by host enzymes into two subunits (HA1 and HA2). Numerous crystal structures of different HAs have been solved, both alone and as co-crystals with various glycan structures (Eisen et al., 1997; Gamblin et al., 2004; Ha et al., 2001, 2003; Sauter et al., 1992; Skehel and Wiley, 2000; Stevens et al., 2006c; Weis et al., 1988; Yamada et al., 2006). This body of structural work offers valuable insights on the specificity of HA binding. In tandem, biochemical studies identified a key feature for binding of human-adapted HA to glycans terminated by N-acetyl neuraminic acid linked  $\alpha 2 \rightarrow 6$  to galactose (N-acetyl-D-neuraminic acid [Neu5Ac] $\alpha 2 \rightarrow 6$  D-galactose [Gal], hereafter referred to as  $\alpha 2 \rightarrow 6$ ) present on human respiratory epithelia (Ibricevic et al., 2006; Russell et al., 2006; Shinya et al., 2006; Skehel and Wiley, 2000; van Riel et al., 2007). These biochemical findings have been correlated with the finding that human respiratory tissue contains epithelial cells with  $\alpha 2 \rightarrow 6$  sialic-acid-capped glycans (sites for attachment of human-adapted viruses), whereas cells that primarily express glycans terminated by N-acetyl neuraminic acid linked  $\alpha 2 \rightarrow 3$  to galactose (Neu5Ac $\alpha 2 \rightarrow 3$ Gal, hereafter referred to as  $\alpha 2 \rightarrow 3$ ), such as the alveolar cells, are sites for attachment of avian-adapted viruses (Shinya et al., 2006). These and other findings suggest that for a virus to cross over from avian species to humans, its HA must switch binding preference from  $\alpha 2 \rightarrow 3$  sialylated glycan receptors, present in avian species, to  $\alpha 2 \rightarrow 6$  receptors (Connor et al., 1994; Glaser et al., 2006; Kumari et al., 2007; Matrosovich et al., 2004, 2007; Rogers et al., 1983; Russell et al., 2006; Tumpey et al., 2007), present in human upper airway epithelium. Recent developments question the conception that the preference of HA binding to  $\alpha 2 \rightarrow 3$  or  $\alpha 2 \rightarrow 6$  alone is sufficient to designate human- versus avian-adapted HA (Bewley, 2008).

### HA-Glycan Interactions: Answering Questions and Generating Others

The specificity of HA binding to cell surface glycan structures has been addressed not only by crystal structure analysis, but also by the advent of powerful biochemical and biological tools that provide significant insight and raise additional questions regarding HA-glycan interactions.

#### Tools to Study HA-Glycan Interactions

A variety of biochemical methods have traditionally been used to characterize the specificity of HA-glycan interactions. One of the earliest methods, still in use today for probing the glycan-binding specificity of a particular virus (through its HA) involves measuring its ability to agglutinate red blood cells (RBCs). RBCs from species such as chicken, turkey, horse, guinea pigs and humans have been used (Connor et al., 1994; Paulson and Rogers, 1987; Rogers and Paulson, 1983; Tumpey



**Figure 2. Structure of Trimeric HA**

The cartoon rendering of a representative H1N1 HA (Protein Data Bank ID 1RU7) is shown where each chain (HA1 or HA2) is colored distinctly. The region in HA1 involved in binding to sialylated glycan receptor and the region between HA1 and HA2 involved in membrane fusion are also highlighted using dotted circles.

et al., 2007; Yang et al., 2007). Equine RBCs primarily contain  $\alpha 2 \rightarrow 3$  glycans at their cell surface, whereas turkey and guinea pig RBCs primarily contain  $\alpha 2 \rightarrow 6$  glycans. To augment the usefulness and specificity of these models, the agglutination method has been modified to include a step of complete desialylation of species-specific RBCs followed by specific resialylation by either  $\alpha 2 \rightarrow 3$  or  $\alpha 2 \rightarrow 6$  sialyltransferase, creating a more specific assay (Carroll et al., 1981). Agglutination and other traditional hemagglutination assays permit the definition of viruses' specificity according to the sialic acid linkage, as described above. These assays prove useful in the classification of virus specificity and virulence. However, in its present form, this assay does not allow the examination of specificity beyond the sialic acid linkage, so probing the fine specificity of HA binding is not possible. There are other drawbacks to the use of RBC agglutination to define glycan-binding specificity of a virus strain. First, there is possibly substantial variability in the N- and O-linked cell surface glycans between different batches of RBCs and related potential for variable response. Additionally, the glycan structures on the cell surface of RBCs are not similar to those present on the surface of cells of the

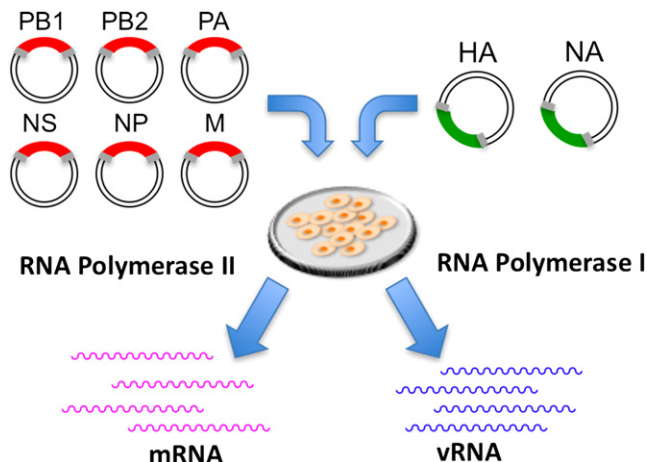
upper airway (Chandrasekaran et al., 2008). Viruses might bind to, and elicit agglutination through glycan receptors that are not present in the upper airway and therefore not physiologically relevant.

Subsequent development of solid-phase fetuin capture assays has provided a wealth of information on the glycan-binding properties of influenza A viruses. In these assays, viruses are immobilized on fetuin-coated surfaces and their binding to various sialylated glycans (including polyvalent compounds) is evaluated (Gambaryan et al., 1995, 2005, 2008; Gambaryan and Matrosovich, 1992; Matrosovich et al., 2000). The presentation of the viruses is heterogeneous because the amount of virus captured on the plate depends on the binding of the viral HA to the sialylated glycans on fetuin. Furthermore, measuring the binding of fixed viruses to glycans in solution is opposite to the physiological event where glycans are less mobile on the cell surface as compared with the virus.

Although not commonly used to investigate HA-glycan interactions, isothermal titration calorimetry and surface plasmon resonance have been widely employed to determine equilibrium binding affinity constants and thermodynamic parameters for glycan-protein interactions (Dam et al., 2009; Duverger et al., 2003; Karamanska et al., 2008). These methodologies thus offer promising tools for quantifying the binding affinity of HA-glycan interactions.

Recent advances in the chemical and chemoenzymatic synthesis of glycans have allowed for the development of glycan array platforms. These platforms consist of hundreds of synthetic glycan motifs (typically present on N- and O-linked glycoproteins and glycolipids) displayed on the surface of the array. Multiple types of arrays have been developed that utilize different strategies including the formation of neoglycolipids (Fukui et al., 2002), neoglycoproteins (Gildersleeve et al., 2008; Huang et al., 2008), or the direct application of glycans to various surfaces (Blixt et al., 2004; Grun et al., 2006; Karamanska et al., 2008; Liang et al., 2008; Mercey et al., 2008; Xia et al., 2005). Several fine reviews outline advances that have occurred recently in the development of array technologies (Blixt et al., 2004; Feizi et al., 2003; Houseman and Mrksich, 2002; Liang et al., 2008; Oyeleran and Gildersleeve, 2007; Seeberger and Werz, 2007; Stevens et al., 2006b). Among the various glycan array platforms, those developed by the Consortium for Functional Glycomics (CFG) are arguably the most accessible. More than 2000 samples have been screened on CFG glycan arrays by the scientific community, and data generated on the CFG glycan array platform are disseminated freely to the public via web-based interfaces ([www.functionalglycomics.org/static/consortium/resources/resourcecoreh.shtml](http://www.functionalglycomics.org/static/consortium/resources/resourcecoreh.shtml)). Recent studies have begun to adapt these technologies toward the ultimate presentation of *natural* glycans by harvesting glycans from the surface of cells and imprinting these on a glycan array format (Song et al., 2009), thus allowing one to probe the glycan repertoire of a biological system. In this manner, it is possible to create arrays specific to a disease or biological process that permit the interpretation of glycan-binding information in relation to that process.

The glycan array platforms developed by the CFG have already been used to screen wild-type and mutant forms (mutations in HA) of intact viruses and recombinant HAs belonging to the H1, H2, H3, H5, H7, and H9 subtypes (Belsler et al., 2008; Kumari



**Figure 3. The Eight-Plasmid Polymerase(pol) I-II System for the Generation of Influenza A Virus**

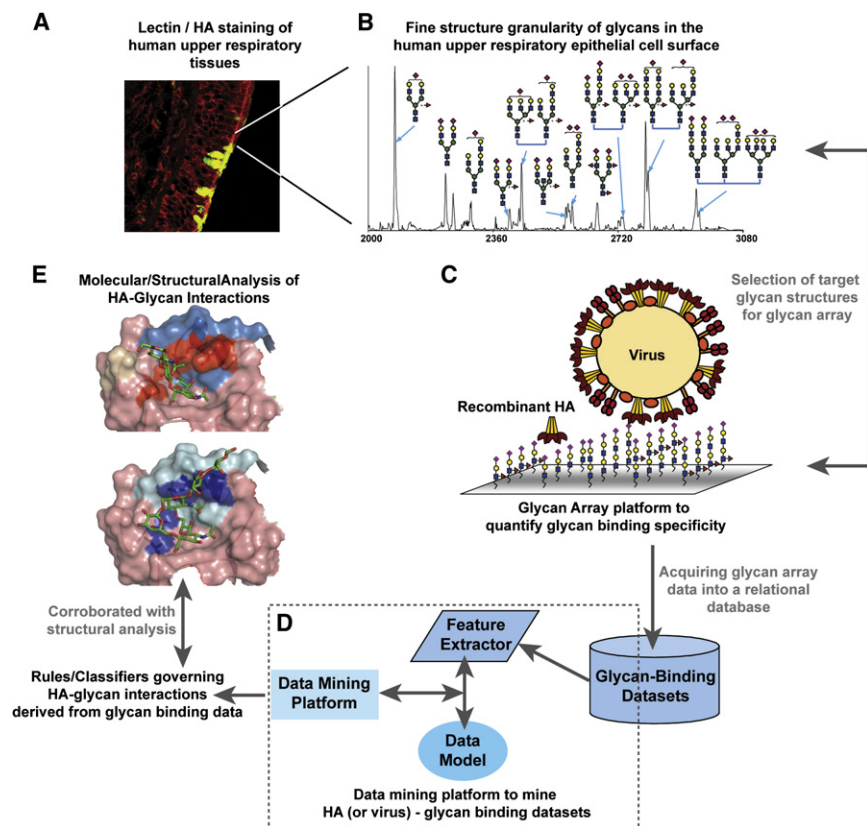
Expression plasmids containing the eight viral cDNAs, inserted between the human pol I promoter and the pol II promoter are transfected into cells. Because each plasmid contains two different promoters, both cellular pol I and pol II will transcribe the plasmid template in different orientations, which will result in the production of vRNAs and mRNAs, respectively. Synthesis of the viral polymerase complex proteins (PB1, PB2, PA, and nucleoproteins) initiates the viral replication cycle. Ultimately, the assembly of viral molecules results in the interaction of all synthesized molecules to generate infectious influenza A virus.

et al., 2007; Stevens et al., 2006a, 2008; Wan et al., 2008). These studies have increased our understanding of HA binding to sialylated glycan receptors by mapping the effect of glycan modifications, such as sulfation and fucosylation, on the HA-glycan interactions. The scope of most of these studies is intended to serve as a primary screen where high viral titers or HA concentrations are used to define the binding preference of HA in terms of  $\alpha 2 \rightarrow 3$  and/or  $\alpha 2 \rightarrow 6$  binding.

#### Tools to Bridge HA-Glycan Interactions with Viral Pathogenesis

In 1989 Palese and colleagues first demonstrated the ability to manipulate the influenza virus genome by developing a system that allowed the use of standard recombinant DNA technology to modify the genome of influenza virus to express foreign genes (Luytjes et al., 1989). Their advance formed the basis for the development of methods—termed reverse genetics—which permit synthesis of the whole virus from the cDNAs of individual virus genes (Hoffmann et al., 2000; Pleschka et al., 1996) (Figure 3). In addition to the advent and widespread adoption of reverse genetics, the emergence of ferrets as a model system to study pathogenesis and contact and respiratory droplet modes of transmission (Lowen and Palese, 2007; Tumpey et al., 2007; van der Laan et al., 2008) has proven of equal importance to the investigation of various aspects of influenza biology. Studies have demonstrated that ferrets possess similar glycan structures to humans, including a predominance of human-like  $\alpha 2 \rightarrow 6$  glycans in their upper respiratory tract epithelium (Maines et al., 2006).

The ability to completely reconstruct the pandemic 1918 H1N1 viruses through reverse genetics and to test its virulence in ferrets permitted a systematic exploration of the roles for various viral genes in the virulence and transmissibility of influenza A strains (Palese, 2004; Tumpey et al., 2005). Single gene reassortants of the highly virulent pandemic human H1N1 (A/South



**Figure 4. Bridging Glycan-Binding Specificity with Biological Function of Influenza A Virus**

(A) Lectin staining of human upper respiratory tissues provides a high-level picture of  $\alpha 2$ -3- and  $\alpha 2$ -6- N- and O-linked glycans.

(B) Finer granularity on physiological glycans is obtained by analyzing glycans derived from upper respiratory epithelial cells using a combination of analytical tools.

(C) The biochemical specificity of HA-glycan interactions is characterized based on binding of recombinant HA or whole viruses to glycan structures presented using a glycan array platform. The array platform is designed to incorporate target structures based on their predominant expression in the upper respiratory tissues.

(D) The high-throughput data on binding of HA or virus to hundreds of glycans on the array is captured into a relational database and these data are mined using methods to obtain rules or classifiers that govern the glycan-binding specificity of wild-type and mutant HAs.

(E) The rules obtained from data mining are corroborated using X-ray cocrystal structures of HA-glycan complexes and molecular simulation of HA-glycan interactions. The comprehensive knowledge of the key determinants of HA-glycan interactions obtained using this integrated framework provides a much better handle to correlate with the biological function of host adaptation of the influenza A virus.

Carolina/1/18 or SC18) virus with a contemporary epidemic human H1N1 (A/Texas/36/91 or Tx91) virus showed that the HA of SC18 had the most profound effect on the virulence of the reassorted viruses, followed by the NA and PB1 genes (Pappas et al., 2008). More recently, gene reassortment and reverse genetics were employed to demonstrate that HA and PB2 are the two critical genes conferring viral transmissibility via respiratory droplets in ferrets (van Hoeven et al., 2009).

In one study pertaining to the SC18 virus, either a single point mutation (NY18) or two point mutations (AV18) in HA resulted in a virus that was unable to transmit efficiently via respiratory droplets in the ferret model. This study permitted obtaining critical details on the relationship between glycan-binding properties of these 1918 H1N1 HAs (the other genes are identical between SC18, NY18, and AV18) and their airborne transmissibility. The RBC agglutination assay described above was used to characterize SC18 and determined that it was an  $\alpha 2 \rightarrow 6$  binder, NY18 was a mixed  $\alpha 2 \rightarrow 6/\alpha 2 \rightarrow 3$  binder, and AV18 was an  $\alpha 2 \rightarrow 3$  binder. The change in binding preference of NY18 and AV18 HA in combination with an invariant NA can potentially influence the tissue tropism and virulence of the viruses. NY18 and AV18 are more likely to infect deep lung tissues that preferentially express  $\alpha 2 \rightarrow 3$  glycans. Given that the NA of these  $\alpha 2 \rightarrow 3$  glycan-binding viruses remains the same as that of SC18, it might be inefficient at releasing the viral particles from the deep lung tissues, leading to lower virulence of these mutant viruses.

When coupled with the fact that this virus transmitted inefficiently, the binding specificity of NY18 HA leads to the conclusion that loss of  $\alpha 2 \rightarrow 3$  binding is necessary for efficient trans-

mission but that the gain of  $\alpha 2 \rightarrow 6$  is insufficient. In an apparent contradiction to this conclusion, Tx91—also a mixed  $\alpha 2 \rightarrow 3/\alpha 2 \rightarrow 6$  binding H1N1 virus—is able to transmit efficiently (Tumpey et al., 2007). In other studies using H7 and H9 viruses (Belsler et al., 2008; Wan et al., 2008), it was observed that although some of the wild-type or HA mutant viruses showed substantial  $\alpha 2 \rightarrow 6$  binding, none transmitted via respiratory droplets in the ferret model. However, in the same experimental system the control human adapted H3N2 viruses that showed similar  $\alpha 2 \rightarrow 6$  binding did transmit efficiently. These studies suggest that defining glycan receptor targets of HA in terms of  $\alpha 2 \rightarrow 3$  /  $\alpha 2 \rightarrow 6$  alone (using RBC agglutination, glycan arrays, etc.) is inadequate to bridge with the biological role of HA in human adaptation and viral virulence. In light of the critical role of HA with respect to virulence and human adaptation of the virus, it is clear that additional factors govern the specificity of HA binding and determine whether a virus is able to efficiently infect or transmit in humans.

#### Integrating Bottoms-Up and Top-Down Approaches to Bridge Structure and Biology

Addressing the above issues required an integration of information from complementary approaches that permit a move from the biological to the structural space in an iterative and transitive fashion (Figure 4). Each endeavor addressed a series of specific questions, and collectively the data provide complementary, overlapping sets of information that define the underlying specificity of influenza A HA. The *bottom-up* approach starts by examining the structure of glycans present on the cell surface

Many glycan-protein interactions are multivalent and thus are the product of multiple interactions between a glycan structure and a protein. Qualitative description of the strength of this interaction is termed *avidity* and an apparent equilibrium constant is used to quantitatively describe the interaction. Whitesides and others have explicitly dealt with the relationship between *affinity* ( $K^{mono}$ ), a description of a 1:1 complex and *avidity* ( $K_N^{poly}$ ).

$$K_N^{poly} = (K^{mono})^{\alpha N}$$

In this case,  $\alpha$ , is a measure of the cooperativity of the system. Moving from a description of equilibrium constants to a measure of  $\Delta G$ ,  $\Delta G_{avg}^{poly}$  is defined as the average change in free energy of the interaction:

$$\Delta G_{avg}^{poly} = \Delta G_N^{poly} / N$$

$$\Delta G_{avg}^{poly} = \alpha \Delta G^{mono}$$

Where  $\Delta G_{avg}^{poly} > \Delta G^{mono}$ , the degree of cooperativity,  $\alpha$ , in such systems is greater than one. Accordingly, in the case where  $\Delta G_{avg}^{poly} = \Delta G^{mono}$ ,  $\alpha$  is 1, and in the case where  $\Delta G_{avg}^{poly} < \Delta G^{mono}$ , the system experiences negative cooperativity.

### Figure 5. Defining the Thermodynamics of Glycan-Protein Interactions

In many cases, glycan-protein interactions are multivalent, involving multiple 1:1 interactions where the surfaces can either be two cells, or in the case of influenza A, the virus particle and a host cell. It is critical to define  $N$ , the number of binding sites, to establish the precise relationship between the thermodynamic parameters  $\Delta G_{poly}$ ,  $K_{poly}$ , and  $\alpha$ . Development of biochemical and array systems where  $N$  can be defined thus have been and will continue to be a priority. Alternatively, if  $N$  is unknown, information can still be derived, but precise relationships, including cooperativity, cannot be determined.

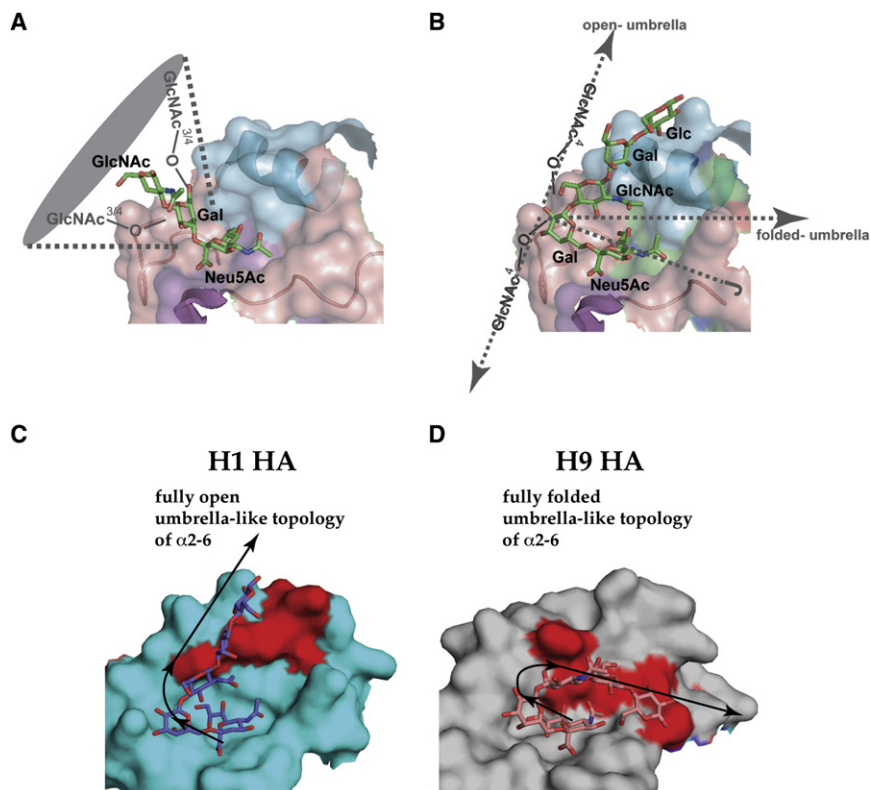
3GalNAc $\alpha$ - and -N-acetyl-D-glucosamine [GlcNAc] $\beta$ 1-3GalNAc $\alpha$ -) and N-linked (trimannosyl core) glycans, respectively, are used alone or in combination to probe tissue samples (Chandrasekaran et al., 2008). Using this lectin matrix in an iterative manner provides detailed information about glycan distribution. In this case, it was shown that there is a widespread distribution of N-linked

of human airway epithelial cells, and then by using this information to quantitatively probe the affinity of HA to individual glycan species.

Because human upper respiratory epithelia are the primary targets for human-to-human transmission of influenza A virus, it is essential to identify the types of sialylated glycans present on these tissues. The characterization of the glycan repertoire for a given tissue or cell type is challenging due to the complexity associated with accessing and elucidating these structures. While it is recognized that sialylated glycans of epithelial cells are the receptor for HA (and accordingly virus) binding and internalization, epithelial cells themselves possess a broad array of structurally diverse glycan structures. Addressing this diversity requires orthogonal biochemical and biological tools that are specific, sensitive, and robust. One approach that has been employed is to bridge lectin staining of different tissue sections with glycan profiling of representative human cell lines using matrix-assisted laser desorption ionization (MALDI) mass spectrometry (MS) and MS/MS (to fragment glycans and provide structural information) analyses (Comelli et al., 2006; Uematsu et al., 2005). Other information-rich techniques have also been employed, including capillary high-performance liquid chromatography, liquid chromatography MS, and nuclear magnetic resonance (Manzi et al., 2000; Norgard-Sumnicht et al., 2000). Regardless of the particular analytical techniques employed, the use of these complementary approaches provides a superior quality of information because (1) data sets can be cross-checked with one another, and (2) no single analytical approach, no matter how powerful, has equally descriptive power for all structures, especially glycans. Notably, in one approach, *Sambucus nigra* agglutinin (SNA-I), a prototypic lectin that specifically binds to  $\alpha 2 \rightarrow 6$  glycans, and jacalin and concanavalin A (Con A), which bind to specific motifs in O-linked (-Gal $\beta$ 1-

$\alpha 2 \rightarrow 6$  (on ciliated cells) glycans and localized distribution of O-linked  $\alpha 2 \rightarrow 6$  glycans on goblet cells in human tracheal epithelia (Chandrasekaran et al., 2008). This analysis was then confirmed and extended using detailed MALDI analysis of glycans derived from representative human upper epithelia cells to identify glycan composition, and MS/MS fragmentation to determine their structural features, including the presence of a lactosamine extension. Thus, MS and MS/MS information is interpreted in the context of the information obtained from lectin analysis (Chandrasekaran et al., 2008). This is but one example of the application of different, overlapping analytical techniques to obtain complementary data sets; other, equally valid strategies can be devised.

Importantly, this coupled approach can provide a powerful complement to the construction of natural arrays and increase their utility to identify glycan-binding partners to proteins. Alternatively, such analysis can provide an important framework for the development of quantitative array and array-like binding assays using selected synthetic structures that are representative of cell surface glycans. For an analysis of this nature to be valid, three key variables must be addressed and controlled to ensure accurate interpretation. First, as is the case in biological systems, glycan-protein interactions are typically multivalent and the strength of such a contact should be described based on its avidity. Numerous experimental setups have been proposed to measure avidity, and Kiessling and colleagues provide an excellent overview of many of these (Kiessling et al., 2000). Regardless of platform, the most useful quantitative information is obtained when  $N$ , the number of binding sites is known, though even without  $N$ , useful thermodynamic information can be determined (Mammen et al., 1998) (Figure 5). The spatial arrangement of glycans and the glycan-binding sites on proteins influence the structural valency (i.e., number of



**Figure 6. Three-Dimensional Glycan Topology Influences Molecular HA-Glycan Interactions**

(A) Interactions of HA with *cone-like* topology that is characteristic of avian HA binding to  $\alpha 2\text{-}3$  and short  $\alpha 2\text{-}6$  (such as multiantennary N-linked glycans with single lactosamine branches terminated with  $\alpha 2\text{-}6$ ).

(B) Interactions of HA with *umbrella-like* topology that is characteristic of polylactosamine branch terminated with  $\alpha 2\text{-}6$ .

(C) Contacts between H1 HA with a fully open umbrella-like topology glycan.

(D) Contacts between H9 HA and fully folded umbrella-like topology glycans. Due to the larger surface on HA spanned by umbrella-like topology, the amino acids involved in making contacts with umbrella-like topology glycans (shown in red in C and D) are very different for different HAs.

binding sites on a protein that are occupied by the glycan motifs) of glycan-protein interactions (Dam and Brewer, 2008; Dam et al., 2009). The spatial arrangement of glycan motifs depends on the extent of branching (bi, tri, tetra, penta-antennary N-linked glycans) and spatial distribution of glycosylation sites (clustered, linear, and globular) in different glycoprotein structures. The spatial arrangement of glycan-binding sites in a protein instead depends on the quaternary association of individual domains. In the case of HA, there is a homotrimeric association of identical domains resulting in three glycan-binding sites per trimeric HA unit. Second, similar to biological systems, the glycan structures on the surface should be in excess. If this is not the case, ambiguous results might be obtained, particularly if this situation is not made explicit when plotting and calculating an association constant. Finally, the response should be measured at various concentrations to determine a dissociation constant ( $K_d'$ , which is inverse of the affinity constant,  $K_{poly}^N$ ).

In most of the earlier studies that focused on screening different HAs on glycan arrays, the binding event was designated as a single point “on” or “off.” This designation, though potentially useful, necessarily misses the context of the interaction and the relative biological importance of the interaction. More recently, biochemical assays have been designed to screen HA-glycan interactions over an entire range of HA concentrations (Srinivasan et al., 2008) that take into consideration the aforementioned factors, including spacing of the glycan motifs in an array platform and the spatial arrangement of glycan-binding sites. These assays have permitted quantification of the relative binding affinity of HA to different glycan motifs. Using

such quantitative assays, it has been demonstrated that the human-adapted HAs share a high binding affinity to  $\alpha 2\text{-}6$  glycans (particularly those that have multiple lactosamine repeats) that in turn correlate with their efficient airborne transmissibility (Maines et al., 2009; Srinivasan et al., 2008). Viruses of avian or swine origin although known to infect humans could be distinguished from the human-adapted viruses based on their

quantitative  $\alpha 2\text{-}6$  binding affinity of their respective HAs (Chandrasekaran et al., 2008; Maines et al., 2009).

Analysis employing the *top-down* approach originates from consideration of the molecular and structural aspects of HA-glycan interactions and correlates these aspects with the biochemical binding affinities. Using glycan conformational analysis, examination of HA-glycan cocrystal structures demonstrated that glycan topology (or three-dimensional shape of the glycan) plays a critical role in distinguishing binding of  $\alpha 2\text{-}3$  and  $\alpha 2\text{-}6$  glycans to avian and human-adapted HAs (Bewley, 2008; Chandrasekaran et al., 2008). Analysis of the various crystal structures indicated that a highly conserved set of amino acids Tyr98, Ser/Thr136, Trp153, His183, Leu/Ile194 (numbered based on H3 HA) across different HA subtypes are involved in anchoring the sialic acid. The specificity of HA to either  $\alpha 2\text{-}3$  or  $\alpha 2\text{-}6$  is governed by an extended range of interactions within the glycan-binding site—not only with the sialic acid, but also with the glycosidic oxygen atom and monosaccharides beyond sialic acid.

The ensemble of conformations sampled by the  $\alpha 2\text{-}3$  and  $\alpha 2\text{-}6$  glycans in the binding site of HA was described using a shape-based topological description. In the case of  $\alpha 2\text{-}3$  glycans, the conformations sampled by the Neu5Ac $\alpha 2\text{-}3$ Gal linkage (keeping the Neu5Ac anchored) and the sugars beyond this linkage (at the reducing end) span a region on the binding surface of HA that resembles a “cone.” The assembly of these conformations is therefore described by the term *cone-like* topology (Figure 6).

When contrasted with the Neu5Ac $\alpha 2\text{-}3$ Gal linkage, the presence of the C6-C5 bond within the Neu5Ac $\alpha 2\text{-}6$ Gal linkage

provides additional conformational flexibility. The different conformations sampled by Neu5Ac $\alpha$ 2 $\rightarrow$ 6Gal linkage (keeping the Neu5Ac anchored) and the sugars beyond this linkage (at the reducing end) thus span a wider region on the HA binding surface. One part of this wider region is similar to the cone-like surface and the other part resembles a space that is readily described by the opening of an umbrella from a fully folded to a fully open form. In contrast to the cone-like topology, the set of conformations that sample this other region is better described using the term *umbrella-like* topology (Figure 6). In this case, the stem of the umbrella is occupied by the Neu5Ac $\alpha$ 2-6Gal-motif and the spokes of the umbrella (that are the flexible part causing the opening and closing) are occupied by the sugars at the reducing end of Gal.

The defining characteristic of glycan conformations that span a cone-like topology is that the majority of the interactions with the HA are made by a three-sugar (or trisaccharide)  $\alpha$ 2 $\rightarrow$ 3 (Neu5Ac $\alpha$ 2 $\rightarrow$ 3Gal $\beta$ 1 $\rightarrow$ 3/4GlcNAc-) or  $\alpha$ 2 $\rightarrow$ 6 (Neu5Ac $\alpha$ 2 $\rightarrow$ 6Gal $\beta$ 1 $\rightarrow$ 4GlcNAc-) motif. However, the glycan conformations that sample the umbrella-like topology are such that longer oligosaccharides (beyond a trisaccharide) make substantial contacts with the binding site on HA.

Using these shape-based definitions of the flexible glycan conformation, it has been shown that the umbrella-like topology is predominantly adopted by  $\alpha$ 2 $\rightarrow$ 6 glycans that possess at least four sugars including the Neu5Ac, for example, poly-lactosamine branches terminated by  $\alpha$ 2 $\rightarrow$ 6-linked Neu5Ac (long  $\alpha$ 2 $\rightarrow$ 6). The cone-like topology can instead be adopted by both  $\alpha$ 2 $\rightarrow$ 3 and  $\alpha$ 2 $\rightarrow$ 6 glycans. In the case of  $\alpha$ 2 $\rightarrow$ 6 glycans, those with a three-sugar  $\alpha$ 2 $\rightarrow$ 6 motif, such as N-linked glycans having single lactosamine branches terminated by  $\alpha$ 2 $\rightarrow$ 6 linked Neu5Ac (short  $\alpha$ 2 $\rightarrow$ 6), are more likely to adopt cone-like topology as compared with the long  $\alpha$ 2 $\rightarrow$ 6 branch.

Applying the topology-based description of glycan conformation to the analysis of HA-glycan cocrystal structures revealed that the umbrella-like topology was characteristic of long  $\alpha$ 2 $\rightarrow$ 6 motifs interacting with human adapted H1 and H3 HAs and the cone-like topology was characteristic of  $\alpha$ 2 $\rightarrow$ 3 glycans interacting with avian HA. Because the avian HA binding pocket is well-suited for maximum contacts with cone-like topology, it is probable that  $\alpha$ 2 $\rightarrow$ 6 glycans, particularly those with short  $\alpha$ 2 $\rightarrow$ 6 motifs, will adopt a cone-like topology in the glycan-binding site of avian HA. More recently, the role of glycan topology in molecular HA-glycan interactions was investigated using molecular dynamics (MD) simulations (Xu et al., 2009). Findings from this study support the notion that the umbrella-like topology is energetically preferred by glycans upon binding to human-adapted HA. The adoption of an umbrella-like topology by a long  $\alpha$ 2 $\rightarrow$ 6 motif in an avian H5 HA-binding site was associated with a high conformational entropy penalty in comparison with the adoption of this topology in the human-adapted H3 HA-binding site. These studies have further extended the definition of glycan topology using other parameters such as glycosidic torsion angles of sugars beyond the terminal sialic acid linkage and volume occupied by the different glycan topologies.

The above molecular and structural analyses of HA-glycan interactions offer a framework for the interpretation of glycan array data (Figure 4). Data-mining tools have been developed to identify

patterns among binders (candidate ligands identified on the array) and nonbinders. These patterns are defined using glycan features that are abstracted from the glycan structures tested, for example as part of a glycan array. The combination of patterns from binders and nonbinders provides rules, or classifiers, that define glycan-binding motifs for a given HA. These classifiers can be used to corroborate the structural aspects of glycan-HA interactions obtained from analysis of the cocrystal structures. For instance, the  $\alpha$ 2 $\rightarrow$ 3 classifiers define motifs in terms of substitutions around a trisaccharide Neu5Ac $\alpha$ 2 $\rightarrow$ 3Gal $\beta$ 1 $\rightarrow$ 3/4GlcNAc $\beta$ 1 $\rightarrow$ , whereas  $\alpha$ 2 $\rightarrow$ 6 classifiers define length-dependent motif that terminates in Neu5Ac $\alpha$ 2 $\rightarrow$ 6Gal $\beta$ 1 $\rightarrow$ 4GlcNAc $\beta$ 1 $\rightarrow$  structure.

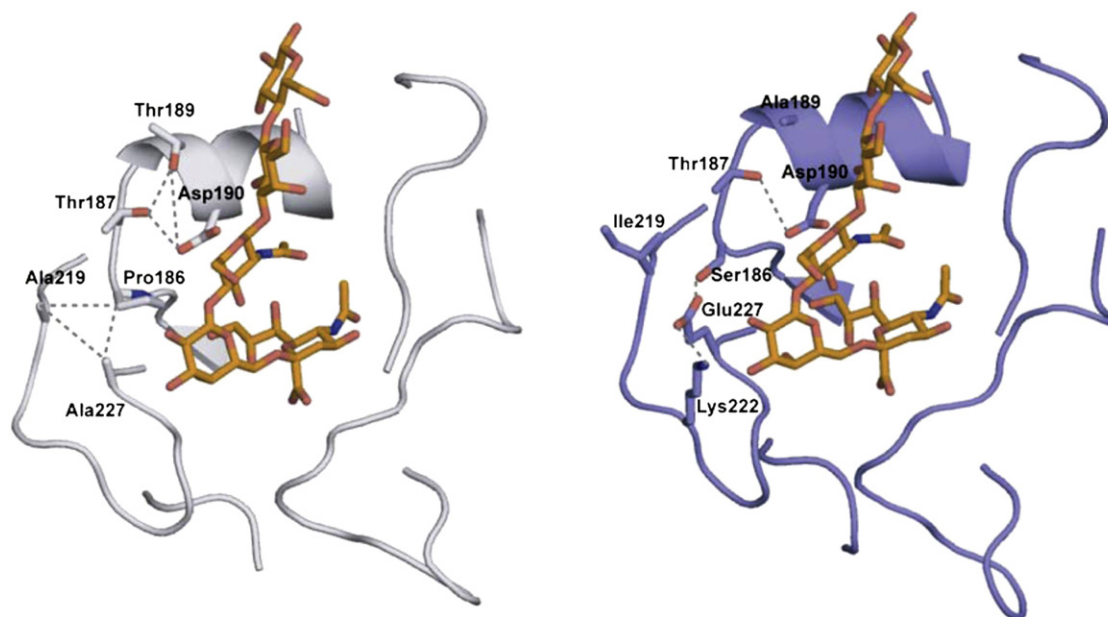
Additionally, from an analysis of crystal structures and docking of glycan structures, it is possible to estimate  $\Delta G_{mono}$ , or the strength of a monovalent glycan-protein interaction (Figure 5). Several advances have improved the force fields used to model glycans and protein-glycan interactions (Case et al., 2005; Kirschner et al., 2008). These theoretical methods have become remarkably effective at predicting carbohydrate 3D structures, since the advent of accurate carbohydrate-specific force fields (Woods, 1998) and the advances in timescales that are accessible to MD simulations. All commonly employed biomolecular simulation packages (AMBER, CHARMM, GROMOS, etc.) now include high-quality carbohydrate force fields. There are currently several methods to calculate binding free energies ( $\Delta G$ ). The most accurate of these computes relative binding affinities for two related ligands by mutating one molecule onto another. Such “computational alchemy” can be performed by thermodynamic integration, but is limited to predicting relative binding energies for structurally similar ligands. Although the predicted interaction energies from these docking methods might only be qualitative, the resultant structures of the ligand-protein complexes provides additional information on the interactions.

In conclusion, the recent development of biochemical and biophysical tools truly enables the scientific community to rapidly and thoroughly address some fundamental aspects of *describing* glycan-protein interactions. By combining quantitative binding affinity information obtained from the array with molecular simulations, it is possible to correlate changes in the enthalpic and entropic contributions of the monovalent glycan-protein interaction with the quantitative differences in relative glycan-binding affinity. By identifying biochemical systems where multivalency can be taken into account (and hence define  $N$  in a rigorous manner), it is possible to define *avidity* and provide additional context to the glycan-protein interactions, which can be carried through to biological studies.

### Framework for Role Of HA-Glycan Interactions in Influenza A Virus Biology

The intersection of the *bottom-up* and *top-down* approaches highlight the fact that for a virus to efficiently infect humans, it must bind to glycans that can adopt the umbrella-like topology (for example sialylated structures containing multiple lactosamine repeats, i.e., long  $\alpha$ 2 $\rightarrow$ 6). Thus, the structural topology of the glycan and not just the linkage appears to govern HA-binding specificity. This framework not only takes into account glycan structure in the context of protein binding, but also resolves the apparent inconsistencies between the binding and transmission data for SC18, NY18, AV18, and Tx91. SC18 and





#### Glycan-Binding Properties of the 2009 A/H1N1 “Swine Flu” Hemagglutinin

The integration of the *top-down* and *bottom-up* approaches was recently employed to provide key insights into the glycan-binding properties of HA from the 2009 swine flu H1N1 influenza A viruses (henceforth referred to as 2009 A/H1N1) and their correlation with the transmissibility of these viruses in ferrets (Maines et al., 2009). One of the characteristics of a human-adapted virus is in its ability to achieve efficient transmission between humans via respiratory droplets (airborne) (Tumpey et al., 2007). Comparison of the respiratory droplet transmissibility of representative 2009 A/H1N1 viruses and a recent seasonal H1N1 influenza outbreak strain (A/Brisbane/59/07 or Bris07) in ferrets showed that the 2009 A/H1N1 viruses transmitted less efficiently (Maines et al., 2009).

It has been demonstrated previously (Srinivasan et al., 2008; Tumpey et al., 2007) that the efficiency of respiratory droplet transmission in ferrets correlates with the  $\alpha$ 2-6 binding affinity of the viral HA. In fact, a single amino acid mutation in HA of the efficiently transmitting SC18 virus led to a virus (NY18) that transmitted inefficiently. The  $\alpha$ 2-6 binding affinity of NY18 HA was substantially lower than that of SC18 HA (Srinivasan et al., 2008). In a *bottom-up* approach, using a quantitative dose-dependent direct glycan receptor-binding and human lung tissue binding assays (Maines et al., 2009), the binding pattern of a representative 2009 A/H1N1 HA (A/California/04/09; or CA/04) was found to be similar to that of the pandemic SC18 H1N1 HA. Like SC18 HA, CA/04 showed substantial binding (in a dose-dependent fashion) to the single 6'SLN-LN  $\alpha$ 2-6 oligosaccharide motif. However, the binding affinity of CA/04 HA to 6'SLN-LN was substantially lower than that of SC18 HA. CA/04 HA also showed binding to the apical surface of human tracheal tissue section (in a sialic-acid-specific manner), and this binding pattern correlates with the predominant distribution of  $\alpha$ 2-6 sialylated glycans on the apical surface of the tracheal tissue (Chandrasekaran et al., 2008) and the  $\alpha$ 2-6 binding of CA/04 HA in the direct glycan receptor-binding assay.

Through a *top-down* approach, involving a combination of sequence analysis and homology based structural modeling of CA/04 HA, it was predicted that this HA would have a substantially higher  $\alpha$ 2-6 as compared with  $\alpha$ 2-3 binding (Soundararajan et al., 2009). This is consistent with the observed binding pattern in the *bottom-up* approach. Building on this study, a more recent investigation offered a possible structural rationale for the observed reduced  $\alpha$ 2-6 binding affinity of CA/04 HA (in comparison with that of SC18 HA) (Maines et al., 2009). The receptor-binding site (RBS) of CA/04 HA shares many similar or analogous residues with that of SC18 HA, providing an explanation for the similarity in their binding pattern (Maines et al., 2009; Soundararajan et al., 2009). These analogous residues include Asp190 and Asp225, which are “signature” amino acids of human adapted H1N1 HAs that make optimal contacts with the  $\alpha$ 2-6 glycans (Gamblin et al., 2004). The main differences in the RBS between SC18 and CA/04 HA are at positions 145, 186, 189, 219, and 227. The structural analysis of the interresidue and residue-glycan contacts involving these residue positions pointed to some key differences between CA/04 and SC18 HA (Figure 7). Specifically, in SC18, a network of interactions involving hydrophobic contacts among Ala219, Ala227, and Pro186, and ionic contacts between Thr187, Thr189, and Asp190 are involved in positioning Asp190 for optimal contacts with  $\alpha$ 2-6 glycans. However, the unique combination of residues Ile219 and Glu227 in CA/04 HA had a disrupting effect on the network of interactions given that the contacts between these residues are neither hydrophobic nor ionic. This disrupting effect on the network could have a negative effect on the positioning of Asp190 and hence offering a possible structural explanation for the observed lower  $\alpha$ 2-6 binding affinity of CA/04 in comparison with that of SC18 HA. Taken together, the substantially lower  $\alpha$ 2-6 binding affinity of CA/04 HA as compared with that of SC18 HA correlates with its less efficient respiratory droplet transmission in ferrets.

#### Figure 7. Structural Rationale for $\alpha$ 2-6 Binding Affinity of 2009 A/H1N1 HA

Shown on the left are residues in positions 186, 187, 189, 190, 219 and 227 of SC18 HA (cartoon representation in gray) in complex with an  $\alpha$ 2-6 oligosaccharide (Neu5Ac $\alpha$ 2-6Gal $\beta$ 1-4GlcNAc $\beta$ 1-3Gal $\beta$ 1-4Glc) (Srinivasan et al., 2008). The oligosaccharide is shown in stick representation colored orange (carbon atoms). The network of interactions is shown in dotted gray lines. Shown on the right are the same residue positions in structural complex of CA/04 HA (cartoon representation in violet) with the same  $\alpha$ 2-6 oligosaccharide (Maines et al., 2009). The presence of the unique combination of Ile219 and Glu227 is not favorable for the optimal positioning of Asp 190 (as seen on the left) for contacts with the  $\alpha$ 2-6 oligosaccharide. Lys222 is also shown as it is positioned to interact with Glu227.

Tx91, both efficient transmitters, bind with high affinity to glycans that adopt an umbrella-like topology, whereas NY18 and AV18, which are inefficient transmitters, bind with higher affinity to cone-like glycans, including glycans that either have  $\alpha$ 2 $\rightarrow$ 3 or  $\alpha$ 2 $\rightarrow$ 6 sialic acid. This framework demonstrates that description of HA-glycan interactions based on *trans* and *cis* conformations (adopted by  $\alpha$ 2 $\rightarrow$ 3 and  $\alpha$ 2 $\rightarrow$ 6 linkages, respectively) alone does not fully capture the structural features and conformational flexibility of the diverse sialylated glycans observed in human tissues. However, cone-like and umbrella-like classifications are able to fully capture the conformational plurality of these

glycans and their binding to HA. Significantly, these classifications are able to distinguish the  $\alpha$ 2 $\rightarrow$ 3 and  $\alpha$ 2 $\rightarrow$ 6 binding of avian- and swine- adapted HAs from that of the  $\alpha$ 2 $\rightarrow$ 6 binding of human adapted HAs (Figure 7). Moreover, H1, H5, and H9 are of different structural clades and hence have distinct spatial arrangement of residues in the glycan-binding sites. The conformational flexibility of the  $\alpha$ 2 $\rightarrow$ 6 permits different types of umbrella-like topologies in the glycan-binding sites to accommodate the diverse constraints imposed by the different structural clades of HA (Figure 6). These observations suggest that it is challenging to design mutations in either H5 or H7 HA based

simply on the characteristic changes in a few residues in H1 and H3 HAs that lead to their human adaptation. A set of mutations must instead occur that accommodate umbrella-like glycans in the context of the binding pocket, which is subtly distinct for each HA structural clade.

### Conclusion

Lessons learned from the study of glycans, and particularly the HA example presented here, highlight: (1) the need to employ multiple biophysical, bioanalytical, and biological approaches to ultimately define the binding specificity of HA, and (2) the fact that because different cell types have a distinct cell surface glycan repertoire, studies employed using cell culture or any animal model must be carefully interpreted, because glycan structures present on cells in culture or in a given animal might not be reflective of the structures present on the surface of primary cells within the tissue. For example, the use of mice and Madin-Darby canine kidney cells to characterize virus infectivity (Hatakeyama et al., 2005; Stray et al., 2000) might not be ideal owing to differences in the glycan receptors present in them as compared with physiologically relevant cells.

The development of a systematic understanding of the receptor binding specificity of the HA from various influenza strains is anticipated to help address a number of critical questions, including what defines an avian influenza strain versus one that has become humanized, and what mutations in HA enable the conversion of a strain from an avian virus to one capable of efficient human-to-human transmission. Understanding the receptor specificity of HA as well as the set of mutations that allow a virus to gain the ability to recognize human-like glycans of the upper respiratory tract provides insight into the epidemic and pandemic potential of various strains. Addressing these questions is not only of great scientific significance, but also is immediately pertinent in light of the rise of H5N1 and the specter that it could become fully "humanized" through mutations. The application of approaches outlined in this review, as well as others, should illuminate novel strategies for the development of vaccines and/or therapeutics.

Recent developments in the glycomics analysis of influenza in many respects offer an example for future studies in glycobiology. The role of glycans in cellular events, where modulation tends to be more a function of avidity and presentation (context) rather than a simple on/off event, and integration of biochemical, structural, data-mining, and in vivo studies, are critical to ensure accurate interpretation and extension of findings. With the advent of analytical, synthetic, and computational tools to interrogate protein-glycan interactions, it is possible to design a framework such as that presented here for HA, to study many such biological systems. We anticipate that the availability of such tools, through the efforts of both large-scale glycomics research initiatives and individual researchers, will dramatically increase our understanding of the glycome and its role in fundamental biology.

### ACKNOWLEDGMENTS

The authors would like to acknowledge support from National Institute of General Medical Sciences of the National Institutes of Health (GM 57073 and U54 GM62116 to RS) and the Singapore–Massachusetts Institute of Technology Alliance for Research and Technology (SMART). The authors thank V. Sasisekharan for critical reading of the manuscript and constructive discussion.

### REFERENCES

- Alexopoulou, A.N., Mulhaupt, H.A., and Couchman, J.R. (2007). Syndecans in wound healing, inflammation and vascular biology. *Int. J. Biochem. Cell Biol.* 39, 505–528.
- Belser, J.A., Blixt, O., Chen, L.M., Pappas, C., Maines, T.R., Van Hoeven, N., Donis, R., Busch, J., McBride, R., Paulson, J.C., et al. (2008). Contemporary North American influenza H7 viruses possess human receptor specificity: Implications for virus transmissibility. *Proc. Natl. Acad. Sci. USA* 105, 7558–7563.
- Bewley, C.A. (2008). Illuminating the switch in influenza viruses. *Nat. Biotechnol.* 26, 60–62.
- Bhatia, P.K., and Mukhopadhyay, A. (1999). Protein glycosylation: implications for in vivo functions and therapeutic applications. *Adv. Biochem. Eng. Biotechnol.* 64, 155–201.
- Blixt, O., and Razi, N. (2006). Chemoenzymatic synthesis of glycan libraries. *Methods Enzymol.* 415, 137–153.
- Blixt, O., Head, S., Mondala, T., Scanlan, C., Huflejt, M.E., Alvarez, R., Bryan, M.C., Fazio, F., Calarese, D., Stevens, J., et al. (2004). Printed covalent glycan array for ligand profiling of diverse glycan binding proteins. *Proc. Natl. Acad. Sci. USA* 101, 17033–17038.
- Bovin, N.V., Tuzikov, A.B., Chinarev, A.A., and Gambaryan, A.S. (2004). Multimeric glycotherapeutics: new paradigm. *Glycoconj. J.* 21, 471–478.
- Carroll, S.M., Higa, H.H., and Paulson, J.C. (1981). Different cell-surface receptor determinants of antigenically similar influenza virus hemagglutinins. *J. Biol. Chem.* 256, 8357–8363.
- Case, D.A., Cheatham, T.E., 3rd, Darden, T., Gohlke, H., Luo, R., Merz, K.M., Jr., Onufriev, A., Simmerling, C., Wang, B., and Woods, R.J. (2005). The Amber biomolecular simulation programs. *J. Comput. Chem.* 26, 1668–1688.
- Chandrasekaran, A., Srinivasan, A., Raman, R., Viswanathan, K., Raguram, S., Tumpey, T.M., Sasisekharan, V., and Sasisekharan, R. (2008). Glycan topology determines human adaptation of avian H5N1 virus hemagglutinin. *Nat. Biotechnol.* 26, 107–113.
- Collins, B.E., and Paulson, J.C. (2004). Cell surface biology mediated by low affinity multivalent protein-glycan interactions. *Curr. Opin. Chem. Biol.* 8, 617–625.
- Comelli, E.M., Sutton-Smith, M., Yan, Q., Amado, M., Panico, M., Gilmartin, T., Whisenant, T., Lanigan, C.M., Head, S.R., Goldberg, D., et al. (2006). Activation of murine CD4+ and CD8+ T lymphocytes leads to dramatic remodeling of N-linked glycans. *J. Immunol.* 177, 2431–2440.
- Connor, R.J., Kawaoka, Y., Webster, R.G., and Paulson, J.C. (1994). Receptor specificity in human, avian, and equine H2 and H3 influenza virus isolates. *Virology* 205, 17–23.
- Crocker, P.R. (2005). Siglecs in innate immunity. *Curr. Opin. Pharmacol.* 5, 431–437.
- Crocker, P.R., Paulson, J.C., and Varki, A. (2007). Siglecs and their roles in the immune system. *Nat. Rev. Immunol.* 7, 255–266.
- Dam, T.K., and Brewer, C.F. (2008). Effects of clustered epitopes in multivalent ligand-receptor interactions. *Biochemistry* 47, 8470–8476.
- Dam, T.K., Gerken, T.A., and Brewer, C.F. (2009). Thermodynamics of multivalent carbohydrate-lectin cross-linking interactions: importance of entropy in the bind and jump mechanism. *Biochemistry* 48, 3822–3827.
- Duverger, E., Frison, N., Roche, A.C., and Monsigny, M. (2003). Carbohydrate-lectin interactions assessed by surface plasmon resonance. *Biochimie* 85, 167–179.
- Eisen, M.B., Sabesan, S., Skehel, J.J., and Wiley, D.C. (1997). Binding of the influenza A virus to cell-surface receptors: structures of five hemagglutinin-sialyloligosaccharide complexes determined by X-ray crystallography. *Virology* 232, 19–31.
- Feizi, T., Fazio, F., Chai, W., and Wong, C.H. (2003). Carbohydrate microarrays - a new set of technologies at the frontiers of glycomics. *Curr. Opin. Struct. Biol.* 13, 637–645.
- Fukui, S., Feizi, T., Galustian, C., Lawson, A.M., and Chai, W. (2002). Oligosaccharide microarrays for high-throughput detection and specificity

- assignments of carbohydrate-protein interactions. *Nat. Biotechnol.* **20**, 1011–1017.
- Gambaryan, A.S., and Matrosovich, M.N. (1992). A solid-phase enzyme-linked assay for influenza virus receptor-binding activity. *J. Virol. Methods* **39**, 111–123.
- Gambaryan, A.S., Piskarev, V.E., Yamskov, I.A., Sakharov, A.M., Tuzikov, A.B., Bovin, N.V., Nifant'ev, N.E., and Matrosovich, M.N. (1995). Human influenza virus recognition of sialyloligosaccharides. *FEBS Lett.* **366**, 57–60.
- Gambaryan, A., Yamnikova, S., Lvov, D., Tuzikov, A., Chinarev, A., Pazynina, G., Webster, R., Matrosovich, M., and Bovin, N. (2005). Receptor specificity of influenza viruses from birds and mammals: new data on involvement of the inner fragments of the carbohydrate chain. *Virology* **334**, 276–283.
- Gambaryan, A., Tuzikov, A., Pazynina, G., Bovin, N., Balish, A., and Klimov, A. (2006). Evolution of the receptor binding phenotype of influenza A (H5) viruses. *Virology* **344**, 432–438.
- Gambaryan, A.S., Tuzikov, A.B., Pazynina, G.V., Desheva, J.A., Bovin, N.V., Matrosovich, M.N., and Klimov, A.I. (2008). 6-sulfo sialyl Lewis X is the common receptor determinant recognized by H5, H6, H7 and H9 influenza viruses of terrestrial poultry. *Viol. J.* **5**, 85.
- Gamblin, S.J., Haire, L.F., Russell, R.J., Stevens, D.J., Xiao, B., Ha, Y., Vasisht, N., Steinhauer, D.A., Daniels, R.S., Elliot, A., et al. (2004). The structure and receptor binding properties of the 1918 influenza hemagglutinin. *Science* **303**, 1838–1842.
- Gildersleeve, J.C., Oyelaran, O., Simpson, J.T., and Allred, B. (2008). Improved procedure for direct coupling of carbohydrates to proteins via reductive amination. *Bioconjug. Chem.* **19**, 1485–1490.
- Glaser, L., Zamarin, D., Acland, H.M., Spackman, E., Palese, P., Garcia-Sastre, A., and Tewari, D. (2006). Sequence analysis and receptor specificity of the hemagglutinin of a recent influenza H2N2 virus isolated from chicken in North America. *Glycoconj. J.* **23**, 93–99.
- Grun, C.H., van Vliet, S.J., Schiphorst, W.E., Bank, C.M., Meyer, S., van Die, I., and van Kooyk, Y. (2006). One-step biotinylation procedure for carbohydrates to study carbohydrate-protein interactions. *Anal. Biochem.* **354**, 54–63.
- Ha, Y., Stevens, D.J., Skehel, J.J., and Wiley, D.C. (2001). X-ray structures of H5 avian and H9 swine influenza virus hemagglutinins bound to avian and human receptor analogs. *Proc. Natl. Acad. Sci. USA* **98**, 11181–11186.
- Ha, Y., Stevens, D.J., Skehel, J.J., and Wiley, D.C. (2003). X-ray structure of the hemagglutinin of a potential H3 avian progenitor of the 1968 Hong Kong pandemic influenza virus. *Virology* **309**, 209–218.
- Hanson, S., Best, M., Bryan, M.C., and Wong, C.H. (2004). Chemoenzymatic synthesis of oligosaccharides and glycoproteins. *Trends Biochem. Sci.* **29**, 656–663.
- Hatakeyama, S., Sakai-Tagawa, Y., Kiso, M., Goto, H., Kawakami, C., Mitamura, K., Sugaya, N., Suzuki, Y., and Kawaoka, Y. (2005). Enhanced expression of an alpha2,6-linked sialic acid on MDCK cells improves isolation of human influenza viruses and evaluation of their sensitivity to a neuraminidase inhibitor. *J. Clin. Microbiol.* **43**, 4139–4146.
- Helenius, A., and Aebi, M. (2004). Roles of N-linked glycans in the endoplasmic reticulum. *Annu. Rev. Biochem.* **73**, 1019–1049.
- Hoffmann, E., Neumann, G., Kawaoka, Y., Hobom, G., and Webster, R.G. (2000). A DNA transfection system for generation of influenza A virus from eight plasmids. *Proc. Natl. Acad. Sci. USA* **97**, 6108–6113.
- Houseman, B.T., and Mrksich, M. (2002). Carbohydrate arrays for the evaluation of protein binding and enzymatic modification. *Chem. Biol.* **9**, 443–454.
- Huang, W., Ochiai, H., Zhang, X., and Wang, L.X. (2008). Introducing N-glycans into natural products through a chemoenzymatic approach. *Carbohydr. Res.* **343**, 2903–2913.
- Ibricevic, A., Pekosz, A., Walter, M.J., Newby, C., Battaile, J.T., Brown, E.G., Holtzman, M.J., and Brody, S.L. (2006). Influenza virus receptor specificity and cell tropism in mouse and human airway epithelial cells. *J. Virol.* **80**, 7469–7480.
- Karamanska, R., Clarke, J., Blixt, O., Macrae, J.I., Zhang, J.Q., Crocker, P.R., Laurent, N., Wright, A., Flitsch, S.L., Russell, D.A., et al. (2008). Surface plasmon resonance imaging for real-time, label-free analysis of protein interactions with carbohydrate microarrays. *Glycoconj. J.* **25**, 69–74.
- Kawashima, H., Petryniak, B., Hiraoka, N., Mitoma, J., Huckaby, V., Nakayama, J., Uchimura, K., Kadomatsu, K., Muramatsu, T., Lowe, J.B., et al. (2005). N-acetylglucosamine-6-O-sulfotransferases 1 and 2 cooperatively control lymphocyte homing through L-selectin ligand biosynthesis in high endothelial venules. *Nat. Immunol.* **6**, 1096–1104.
- Kiessling, L.L., Gestwicki, J.E., and Strong, L.E. (2000). Synthetic multivalent ligands in the exploration of cell-surface interactions. *Curr. Opin. Chem. Biol.* **4**, 696–703.
- Kirschner, K.N., Yongye, A.B., Tschampel, S.M., Gonzalez-Outeirino, J., Daniels, C.R., Foley, B.L., and Woods, R.J. (2008). GLYCAM06: a generalizable biomolecular force field. *Carbohydrates. J. Comput. Chem.* **29**, 622–655.
- Kumari, K., Gulati, S., Smith, D.F., Gulati, U., Cummings, R.D., and Air, G.M. (2007). Receptor binding specificity of recent human H3N2 influenza viruses. *Viol. J.* **4**, 42.
- Liang, P.H., Wu, C.Y., Greenberg, W.A., and Wong, C.H. (2008). Glycan arrays: biological and medical applications. *Curr. Opin. Chem. Biol.* **12**, 86–92.
- Lowe, J.B. (2002). Glycosyltransferases and glycan structures contributing to the adhesive activities of L-, E- and P-selectin counter-receptors. *Biochem. Soc. Symp.* **69**, 33–45.
- Lowen, A.C., and Palese, P. (2007). Influenza virus transmission: basic science and implications for the use of antiviral drugs during a pandemic. *Infect. Disord. Drug Targets* **7**, 318–328.
- Luytjes, W., Krystal, M., Enami, M., Parvin, J.D., and Palese, P. (1989). Amplification, expression, and packaging of foreign gene by influenza virus. *Cell* **59**, 1107–1113.
- Maines, T.R., Chen, L.M., Matsuoka, Y., Chen, H., Rowe, T., Ortin, J., Falcon, A., Nguyen, T.H., Maile, Q., Sedyaningsih, E.R., et al. (2006). Lack of transmission of H5N1 avian-human reassortant influenza viruses in a ferret model. *Proc. Natl. Acad. Sci. USA* **103**, 12121–12126.
- Maines, T.R., Jayaraman, A., Belsler, J.A., Wadford, D.A., Pappas, C., Zeng, H., Gustin, K.M., Pearce, M.B., Viswanathan, K., Shriver, Z.H., et al. (2009). Transmission and pathogenesis of swine-origin 2009 A(H1N1) influenza viruses in ferrets and mice. *Science* **325**, 484–487.
- Mammen, M., Dahmann, G., and Whitesides, G.M. (1995). Effective inhibitors of hemagglutination by influenza virus synthesized from polymers having active ester groups. Insight into mechanism of inhibition. *J. Med. Chem.* **38**, 4179–4190.
- Mammen, M., Choi, S.K., and Whitesides, G.M. (1998). Polyvalent interactions in biological systems: Implications for design and use of multivalent ligands and inhibitors. *Angew. Chem. Int. Ed.* **37**, 2755–2794.
- Manzi, A.E., Norgard-Sumnicht, K., Argade, S., Marth, J.D., van Halbeek, H., and Varki, A. (2000). Exploring the glycan repertoire of genetically modified mice by isolation and profiling of the major glycan classes and nano-NMR analysis of glycan mixtures. *Glycobiology* **10**, 669–689.
- Matrosovich, M., Tuzikov, A., Bovin, N., Gambaryan, A., Klimov, A., Castrucci, M.R., Donatelli, I., and Kawaoka, Y. (2000). Early alterations of the receptor-binding properties of H1, H2, and H3 avian influenza virus hemagglutinins after their introduction into mammals. *J. Virol.* **74**, 8502–8512.
- Matrosovich, M., Matrosovich, T., Uhlendorff, J., Garten, W., and Klenk, H.D. (2007). Avian-virus-like receptor specificity of the hemagglutinin impedes influenza virus replication in cultures of human airway epithelium. *Virology* **361**, 384–390.
- Matrosovich, M.N., Matrosovich, T.Y., Gray, T., Roberts, N.A., and Klenk, H.D. (2004). Human and avian influenza viruses target different cell types in cultures of human airway epithelium. *Proc. Natl. Acad. Sci. USA* **101**, 4620–4624.
- Mercey, E., Sadir, R., Maillart, E., Roget, A., Baleux, F., Lortat-Jacob, H., and Livache, T. (2008). Polypyrrole oligosaccharide array and surface plasmon resonance imaging for the measurement of glycosaminoglycan binding interactions. *Anal. Chem.* **80**, 3476–3482.
- Norgard-Sumnicht, K., Bai, X., Esko, J.D., Varki, A., and Manzi, A.E. (2000). Exploring the outcome of genetic modifications of glycosylation in cultured cell lines by concurrent isolation of the major classes of vertebrate glycans. *Glycobiology* **10**, 691–700.
- Oyelaran, O., and Gildersleeve, J.C. (2007). Application of carbohydrate array technology to antigen discovery and vaccine development. *Expert Rev. Vaccines* **6**, 957–969.

- Palese, P. (2004). Influenza: old and new threats. *Nat. Med.* *10*, S82–S87.
- Pappas, C., Aguilar, P.V., Basler, C.F., Solorzano, A., Zeng, H., Perrone, L.A., Palese, P., Garcia-Sastre, A., Katz, J.M., and Tumpey, T.M. (2008). Single gene reassortants identify a critical role for PB1, HA, and NA in the high virulence of the 1918 pandemic influenza virus. *Proc. Natl. Acad. Sci. USA* *105*, 3064–3069.
- Paulson, J.C., and Rogers, G.N. (1987). Resialylated erythrocytes for assessment of the specificity of sialyloligosaccharide binding proteins. *Methods Enzymol.* *138*, 162–168.
- Pleschka, S., Jaskunas, R., Engelhardt, O.G., Zurcher, T., Palese, P., and Garcia-Sastre, A. (1996). A plasmid-based reverse genetics system for influenza A virus. *J. Virol.* *70*, 4188–4192.
- Rogers, G.N., and Paulson, J.C. (1983). Receptor determinants of human and animal influenza virus isolates: differences in receptor specificity of the H3 hemagglutinin based on species of origin. *Virology* *127*, 361–373.
- Rogers, G.N., Paulson, J.C., Daniels, R.S., Skehel, J.J., Wilson, I.A., and Wiley, D.C. (1983). Single amino acid substitutions in influenza haemagglutinin change receptor binding specificity. *Nature* *304*, 76–78.
- Rudd, P.M., Wormald, M.R., and Dwek, R.A. (2004). Sugar-mediated ligand-receptor interactions in the immune system. *Trends Biotechnol.* *22*, 524–530.
- Russell, R.J., Stevens, D.J., Haire, L.F., Gamblin, S.J., and Skehel, J.J. (2006). Avian and human receptor binding by hemagglutinins of influenza A viruses. *Glycoconj. J.* *23*, 85–92.
- Sauter, N.K., Hanson, J.E., Glick, G.D., Brown, J.H., Crowther, R.L., Park, S.J., Skehel, J.J., and Wiley, D.C. (1992). Binding of influenza virus hemagglutinin to analogs of its cell-surface receptor, sialic acid: analysis by proton nuclear magnetic resonance spectroscopy and X-ray crystallography. *Biochemistry* *31*, 9609–9621.
- Seeberger, P.H., and Werz, D.B. (2007). Synthesis and medical applications of oligosaccharides. *Nature* *446*, 1046–1051.
- Shinya, K., Ebina, M., Yamada, S., Ono, M., Kasai, N., and Kawakita, Y. (2006). Avian flu: influenza virus receptors in the human airway. *Nature* *440*, 435–436.
- Skehel, J.J., and Wiley, D.C. (2000). Receptor binding and membrane fusion in virus entry: the influenza hemagglutinin. *Annu. Rev. Biochem.* *69*, 531–569.
- Smithson, G., Rogers, C.E., Smith, P.L., Scheidegger, E.P., Petryniak, B., Myers, J.T., Kim, D.S., Homeister, J.W., and Lowe, J.B. (2001). Fuc-TVII is required for T helper 1 and T cytotoxic 1 lymphocyte selectin ligand expression and recruitment in inflammation, and together with Fuc-TIV regulates naive T cell trafficking to lymph nodes. *J. Exp. Med.* *194*, 601–614.
- Song, X., Xia, B., Stowell, S.R., Lasanajak, Y., Smith, D.F., and Cummings, R.D. (2009). Novel fluorescent glycan microarray strategy reveals ligands for galectins. *Chem. Biol.* *16*, 36–47.
- Soundararajan, V., Tharakaraman, K., Raman, R., Raguram, S., Shriver, Z., Sasisekharan, V., and Sasisekharan, R. (2009). Extrapolating from sequence—the 2009 H1N1 ‘swine’ influenza virus. *Nat. Biotechnol.* *27*, 510–513.
- Srinivasan, A., Viswanathan, K., Raman, R., Chandrasekaran, A., Raguram, S., Tumpey, T.M., Sasisekharan, V., and Sasisekharan, R. (2008). Quantitative biochemical rationale for differences in transmissibility of 1918 pandemic influenza A viruses. *Proc. Natl. Acad. Sci. USA* *105*, 2800–2805.
- Stevens, J., Blixt, O., Glaser, L., Taubenberger, J.K., Palese, P., Paulson, J.C., and Wilson, I.A. (2006a). Glycan microarray analysis of the hemagglutinins from modern and pandemic influenza viruses reveals different receptor specificities. *J. Mol. Biol.* *355*, 1143–1155.
- Stevens, J., Blixt, O., Paulson, J.C., and Wilson, I.A. (2006b). Glycan microarray technologies: tools to survey host specificity of influenza viruses. *Nat. Rev. Microbiol.* *4*, 857–864.
- Stevens, J., Blixt, O., Tumpey, T.M., Taubenberger, J.K., Paulson, J.C., and Wilson, I.A. (2006c). Structure and receptor specificity of the hemagglutinin from an H5N1 influenza virus. *Science* *312*, 404–410.
- Stevens, J., Blixt, O., Chen, L.M., Donis, R.O., Paulson, J.C., and Wilson, I.A. (2008). Recent avian H5N1 viruses exhibit increased propensity for acquiring human receptor specificity. *J. Mol. Biol.* *387*, 1382–1394.
- Stray, S.J., Cummings, R.D., and Air, G.M. (2000). Influenza virus infection of desialylated cells. *Glycobiology* *10*, 649–658.
- Taylor, M.E., and Drickamer, K. (2007). Paradigms for glycan-binding receptors in cell adhesion. *Curr. Opin. Cell Biol.* *19*, 572–577.
- Totani, K., Kubota, T., Kuroda, T., Murata, T., Hidari, K.I., Suzuki, T., Suzuki, Y., Kobayashi, K., Ashida, H., Yamamoto, K., et al. (2003). Chemoenzymatic synthesis and application of glycopolymers containing multivalent sialyloligosaccharides with a poly(L-glutamic acid) backbone for inhibition of infection by influenza viruses. *Glycobiology* *13*, 315–326.
- Tumpey, T.M., Basler, C.F., Aguilar, P.V., Zeng, H., Solorzano, A., Swayne, D.E., Cox, N.J., Katz, J.M., Taubenberger, J.K., Palese, P., et al. (2005). Characterization of the reconstructed 1918 Spanish influenza pandemic virus. *Science* *310*, 77–80.
- Tumpey, T.M., Maines, T.R., Van Hoeven, N., Glaser, L., Solorzano, A., Pappas, C., Cox, N.J., Swayne, D.E., Palese, P., Katz, J.M., et al. (2007). A two-amino acid change in the hemagglutinin of the 1918 influenza virus abolishes transmission. *Science* *315*, 655–659.
- Uematsu, R., Furukawa, J., Nakagawa, H., Shinohara, Y., Deguchi, K., Monde, K., and Nishimura, S. (2005). High throughput quantitative glycomics and glycoform-focused proteomics of murine dermis and epidermis. *Mol. Cell. Proteomics* *4*, 1977–1989.
- van der Laan, J.W., Herberts, C., Lambkin-Williams, R., Boyers, A., Mann, A.J., and Oxford, J. (2008). Animal models in influenza vaccine testing. *Expert Rev. Vaccines* *7*, 783–793.
- van Die, I., and Cummings, R.D. (2006). Glycans modulate immune responses in helminth infections and allergy. *Chem. Immunol. Allergy* *90*, 91–112.
- van Hoeven, N., Pappas, C., Belsler, J.A., Maines, T.R., Zeng, H., Garcia-Sastre, A., Sasisekharan, R., Katz, J.M., and Tumpey, T.M. (2009). Human HA and polymerase subunit PB2 proteins confer transmission of an avian influenza virus through the air. *Proc. Natl. Acad. Sci. USA* *106*, 3366–3371.
- van Riel, D., Munster, V.J., de Wit, E., Rimmelzwaan, G.F., Fouchier, R.A., Osterhaus, A.D., and Kuiken, T. (2007). Human and avian influenza viruses target different cells in the lower respiratory tract of humans and other mammals. *Am. J. Pathol.* *171*, 1215–1223.
- Varki, A., Cummings, R.D., Esko, J.D., Freeze, H.H., Hart, G.W., and Etzler, M.E. (2008). *Essentials of Glycobiology* (Cold Spring Harbor, New York: Cold Spring Harbor Laboratory Press).
- Wan, H., Sorrell, E.M., Song, H., Hossain, M.J., Ramirez-Nieto, G., Monne, I., Stevens, J., Cattoli, G., Capua, I., Chen, L.M., et al. (2008). Replication and transmission of H9N2 influenza viruses in ferrets: evaluation of pandemic potential. *PLoS ONE* *3*, e2923.
- Wang, L., Fuster, M., Sriramarao, P., and Esko, J.D. (2005). Endothelial heparan sulfate deficiency impairs L-selectin- and chemokine-mediated neutrophil trafficking during inflammatory responses. *Nat. Immunol.* *6*, 902–910.
- Weis, W., Brown, J.H., Cusack, S., Paulson, J.C., Skehel, J.J., and Wiley, D.C. (1988). Structure of the influenza virus haemagglutinin complexed with its receptor, sialic acid. *Nature* *333*, 426–431.
- Woods, R.J. (1998). Computational carbohydrate chemistry: what theoretical methods can tell us. *Glycoconj. J.* *15*, 209–216.
- Xia, B., Kawar, Z.S., Ju, T., Alvarez, R.A., Sachdev, G.P., and Cummings, R.D. (2005). Versatile fluorescent derivatization of glycans for glycomics analysis. *Nat. Methods* *2*, 845–850.
- Xu, D., Newhouse, E.I., Amaro, R.E., Pao, H.C., Cheng, L.S., Markwick, P.R., McCammon, J.A., Li, W.W., and Arzberger, P.W. (2009). Distinct glycan topology for avian and human sialopentasaccharide receptor analogues upon binding different hemagglutinins: a molecular dynamics perspective. *J. Mol. Biol.* *387*, 465–491.
- Yamada, S., Suzuki, Y., Suzuki, T., Le, M.Q., Nidom, C.A., Sakai-Tagawa, Y., Muramoto, Y., Ito, M., Kiso, M., Horimoto, T., et al. (2006). Haemagglutinin mutations responsible for the binding of H5N1 influenza A viruses to human-type receptors. *Nature* *444*, 378–382.
- Yang, Z.Y., Wei, C.J., Kong, W.P., Wu, L., Xu, L., Smith, D.F., and Nabel, G.J. (2007). Immunization by avian h5 influenza hemagglutinin mutants with altered receptor binding specificity. *Science* *317*, 825–828.