

Approximate inversion of the wave-equation Hessian via randomized matrix probing

Pierre-David Letourneau, Stanford University, Laurent Demanet*, Massachusetts Institute of Technology and Henri Calandra, Total SA

SUMMARY

We present a method for approximately inverting the Hessian of full waveform inversion as a dip-dependent and scale-dependent amplitude correction. The terms in the expansion of this correction are determined by least-squares fitting from a handful of applications of the Hessian to *random* models — a procedure called matrix probing. We show numerical indications that randomness is important for generating a robust preconditioner, i.e., one that works regardless of the model to be corrected. To be successful, matrix probing requires an accurate determination of the nullspace of the Hessian, which we propose to implement as a local dip-dependent mask in curvelet space. Numerical experiments show that the novel preconditioner fits 70% of the inverse Hessian (in Frobenius norm) for the 1-parameter acoustic 2D Marmousi model.

INTRODUCTION

Much effort and progress has been made over the past several years to cast reflection seismic imaging as a waveform inversion problem, and solve it via all-purpose optimization tools. This shift of agenda has generated two major, as-yet unsolved challenges of a computational nature, namely (1) solving the 3D Helmholtz equation with a limited memory imprint in the high frequency regime, and (2) inverting, or preconditioning the wave-equation Hessian in order to perform high-quality Gauss-Newton iterative steps to minimize the output least-squares objective. This paper is concerned with investigating new ideas to solve the second problem.

The importance of “inverting the Hessian” has been known for a very long time in exploration seismology. To leading order, it corresponds to the physical idea of correcting for wrong amplitudes in a subsurface image, due to uneven illumination by the incident waves. While phases are generally accepted as requiring no correction, many factors come into play to degrade the amplitude resulting from a single migration of the reflectors. This includes:

- Limited aperture and uneven sampling;
- Shadow zones avoided by the direct wave;
- Band limit of the source signature; etc.

Being able to correct for the amplitude biases inherent in migration (and in the Hessian) would have other implications. In a multi-parameter model, it would in principle allow to adequately assign model updates to each of the parameters. For uncertainty quantification, it would also allow to determine the local variance due to data uncertainty, hence basic “error bars” at each pixel/voxel of an image.

The difficulty of inverting the Hessian is due to the fact that it is too large to be represented as a matrix, and applying it to a function in model space is in itself a very computationally intensive operation. To leading order, the wave-equation Hessian is the composition F^*F , where F^* is the migration operator, and F is the demigration operator (linearized forward modeling). In large-scale industrial applications, a prestack depth migration F^* can take weeks to operationalize on a cluster, since it involves mapping 3D model space (billions of unknowns) to possibly 5D data space (trillions of unknowns). Compressive strategies have recently been proposed to reduce this burden, such as various forms of source encoding or “supershots”, but they don’t change the fact that applying F or F^* is still considered a costly operation.

Accordingly, much of the research effort has so far (rightly) focused on considering inverting the Hessian as a very special kind of preconditioning problem, constrained by the availability of at most a handful of applications of F or F^* . An early important contribution is that of (Claerbout and Nichols (1994)), where the illumination is treated as a scalar function, and determined from applying the Hessian to the migrated image. A refinement of this idea is proposed by (Rickett (2003)). (Herrmann (2003); Herrmann et al. (2009)) proposed to approximate the Hessian as a diagonal operation in curvelet space. (Guitton (2004)) proposed a solution based on a “nonstationary convolution” which essentially models illumination as a filter rather than a multiplication. (Symes (2008)) proposed to extend the model for the Hessian by combining the advantages of multiplication and filtering. See also (Bao and Symes (1996)). (Nammour (2008); Nammour and Symes (2009)) extended this model yet again through a dip-dependent scaling. These authors all propose to fit the Hessian or the inverse Hessian from its application to judiciously chosen functions in model space, such as the migrated image — a fitting procedure that has come to be known either as “scaling method” or “matrix probing”.

The contribution of this note is twofold. First, we expand the realization of the inverse Hessian to include additional degrees of freedom that allow to model dip-dependent and scale-dependent scalings in a seamless fashion via pseudodifferential amplitudes, properly discretized via so-called “discrete symbol calculus”. Second, we explain how probing should be extended to the randomized case, why this extension is important for robustness, and why being able to determine the spaces of the Hessian (nullspace and range space) is an important step to properly “color” randomness in model space. While the numerical experiments on the 2D acoustic Marmousi model are on a very modest computational scale, the potential to approximate the whole inverse Hessian in a *quantitative* manner (as we show, 70% in Frobenius norm) seems to be a first and

Randomized Hessian Preconditioner

should be of interest to the community. The investigation of preconditioning for waveform inversion in larger-scale multi-parameters settings is currently under way and will be reported elsewhere.

SETUP

A common high-level formulation of the inversion problem of exploration seismology is the minimization of the least-squares misfit $J[m] = \frac{1}{2} \|d - \mathcal{F}[m]\|_2^2$, where the waveform data d is a function of source position, receiver position, and time; the model m is a function of x, y, z that stands for isotropic wave speed (in this note), or other parameters such as elastic moduli and density; and the (nonlinear) forward modeling operator \mathcal{F} results from simulating wave equations forward in time and sampling the wavefields at the receivers. We denote by F the linearization of \mathcal{F} about a background model velocity, and by F^* the corresponding migration (imaging) operator. A gradient descent step for minimizing J yields a model update of the form $\delta m = \alpha F^*(d - \mathcal{F}[m])$ (for some scalar α), while a Gauss-Newton step would give $\delta m = (F^*F)^{-1}F^*(d - \mathcal{F}[m])$. The Gauss-Newton step solves the linearized problem exactly in a least-squares sense, but it is of course much harder to compute than a gradient step. The product F^*F is called normal operator: it is the leading-order approximation to the wave-equation Hessian $H = \frac{\partial^2 J}{\partial m_i \partial m_j}$. (A true Newton step would invert the full Hessian.) In this note we slightly abuse notations and continue using the letter H for the normal operator.

Iterative methods such as conjugate gradients or LSQR can solve the linear system $H\delta m = F^*(d - \mathcal{F}[m])$, although they require an unreasonably large number of iterations when the matrix H is ill-conditioned. That is always the case in reflection seismology, for the same reasons as listed in the 3 bullets in the introduction. Quasi-Newton methods such as LBFSGS help, but not by much. A *preconditioner* is a matrix P which pre-multiplies H either on the left or on the right, in order to partially invert it and hence require less work from the linear algebra solver. This paper is concerned with defining a good preconditioner $P \simeq H^{-1}$.

MATRIX PROBING

Given a single model m_1 , and the result $m_2 = Hm_1$ from having applied H once, what can be determined about H ? Since $m_1 = H^{-1}m_2$, we have enough information to ask the same question of H^{-1} . “Inverse matrix probing” works when the matrix H^{-1} is simple enough that the knowledge of m_1 and m_2 completely determines it. (Chiu and Demanet (2012)) have shown (see also Demanet et al. (2012)) that this will be the case provided

$$H^{-1} \simeq \sum_{i=1}^p c_i B_i, \quad (1)$$

where c_i are scalar coefficients, B_i are adequate basis matrices, and p is sufficiently small compared to n , the number of rows of the matrix H — for us, the number of pixels/voxels in

model space. The required assumptions on B_i is that they are of high rank and almost orthogonal in the sense of matrices. In practice, p can be as large as $n/5$ when H is well-conditioned.

The linearized reflection seismology problem lends itself well to an approximation of the form (1), at least when the model velocity is smooth. This observation results from a large body of work which establishes that both H and H^{-1} are *pseudodifferential operators* under simple kinematic assumptions, see at least (Beylkin (1985)), (Rakesh (1988)), (ten Kroode et al. (1998)), (Symes (1995)). In that case, we write $Hm(\mathbf{x}) = \int e^{-2\pi i \mathbf{x} \cdot \boldsymbol{\xi}} a(\mathbf{x}, \boldsymbol{\xi}) \hat{m}(\boldsymbol{\xi}) d\boldsymbol{\xi}$, where $\mathbf{x} = (x, y, z)$ and $\boldsymbol{\xi}$ is the Fourier wave-vector variable. The symbol $a(\mathbf{x}, \boldsymbol{\xi})$ obeys very specific smoothness properties. Because it is a function of both space and wave-vector, we can refer to H as a dip-dependent and scale-dependent scaling. Under this pseudodifferential model, it is possible to define B_i from elementary symbols, by adapting the “discrete symbol calculus” approach of (Demanet and Ying (2011)). In other words, each B_i is a pseudodifferential operator with a symbol that uses a single basis function such as Fourier sine or cosine. See (Demanet et al. (2012)) for many missing details. With the B_i known, the scalar coefficients c_i are obtained from the least-squares solution of $m_1 = \sum_{i=1}^p c_i B_i m_2$. If several models $m_{1,k}$ are used instead, then we consider the concatenated system $m_{1,k} = \sum_{i=1}^p c_i B_i m_{2,k}$. Applying each B_i can be done in low complexity (Demanet et al. (2012)). In the sequel we keep referring to $m_{1,k}$ and $m_{2,k}$ as “models” although they really are model perturbations (reflectors).

At this stage however, there are obvious issues with the method. First, there is no guarantee that a good approximation of H^{-1} on a single model m_2 (or a few such models $m_{2,k}$) represents a good approximation of the inverse on *any other* model. Secondly, if the operator H possesses a non-trivial (approximate) null-space and m_1 happens to belong to this null-space, it is hopeless to try to recover it since $Hm_1 \simeq 0$. Trying to overfit m_1 would give rise to unacceptable instabilities.

To alleviate the first issue, we make use of one or several *random* models $m_{1,k}$. The use of random functions is the key to recovering an approximation to the whole matrix H^{-1} . The numerical experiments below confirm this observation. A complete theoretical understanding of this phenomenon is in (Chiu and Demanet (2012)). The same result would not hold in the deterministic case.

For the second problem, we need to characterize the nullspace of H . A model typically belongs to the range space (the orthogonal complement of the nullspace) of H if it takes the form of one or several *local reflectors*, for which there exist a ray going from a given source to a given receiver and such that it is reflected in a specular manner on the reflector. Rays are computed in the smooth background medium by solving the equations of geometrical optics. Multipathing is allowed.

Randomized Hessian Preconditioner

An adequate realization of “local reflectors” in terms of band-limited wavefronts is the curvelet transform. Curvelets are anisotropic wavelets, well-localized in phase-space (Candes and Donoho (2003a), Candes and Donoho (2003b)). They can be used to filter out the null-space components of any given model as follows,

1. Create a random model m (white noise);
2. Take a forward fast curvelet transform Candes et al. (2006);
3. Use ray-tracing to remove elements of the null-space (misaligned local reflectors);
4. Apply the inverse fast curvelet transform to get the filtered random model m_1 .

A depiction of the result obtained after applying the above algorithm to white noise is shown in Figure 1. Once such vectors are available, we implement the algorithm introduced earlier (apply H to m_1 ; solve for the coefficients c_i).

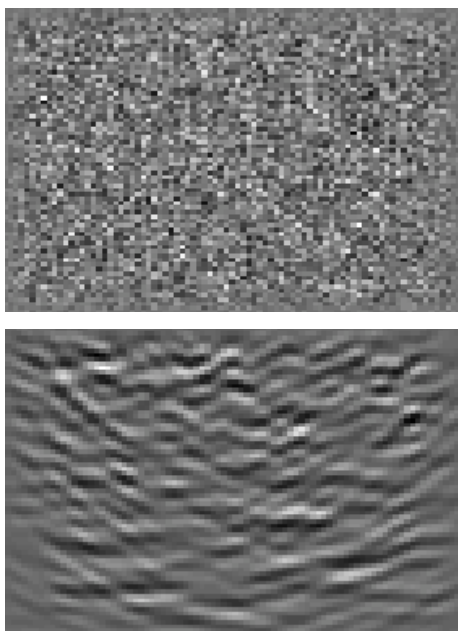


Figure 1: White noise model (top), Typical model in the range space of H : curvelet-masked coloring (bottom)

EXAMPLES

We apply the algorithm presented in the previous section to the single-parameter isotropic acoustic Marmousi benchmark, and compare the performance with the Nammour-Symes deterministic algorithm. Figure 2 shows (from left to right) the original Marmousi model; the result of 200 gradient descent iterations for solving the linearized least-square problem in a regularized fashion (hereby “expensive inversion”); the migrated image (F^*d); and the solution obtained after applying our approximate inverse with 4 random vectors $m_{2,k}$, $k = 1, 2, 3, 4$ to F^*d .

This suggests that the computational savings over gradient descent are of a factor at most 50. All experiments presented here were carried out with a very smooth background velocity. We found that, for a fixed number of degrees of freedom, the performance mildly degrades as the background becomes rougher.

The migrated image suffers from a lack of illumination at large depths, and a narrow spatial bandlimit. A single application of the preconditioner fixes these problems, and goes a long way toward performing full linearized inversion. Figure 3 shows the relative mean-squared error (MSE) between the “expensive inversion” and the solution obtained after applying the preconditioner. Any MSE below 1 means that the preconditioner is working. $R1$, $R3$ and $R5$ refer to the number of random models used to fit the inverse Hessian, namely 1, 3 and 5 respectively. NS1 refers to the deterministic Nammour-Symes algorithm where a single function is used to fit the degrees of freedom (the migrated image). Performance decreases quickly when more vectors belonging to the Krylov subspace of H (i.e. HF^*d , H^2F^*d , ...) are used to fit the degrees of freedom in the NS algorithm.

What sets apart *randomized* matrix probing is that the approximation is robust ; thanks to the randomness of the training models, we are recovering an approximation to the full inverse. Numerical experiments confirm this claim in Figure 4. In this particular example, we generated several random trial models (different from the original training functions) and applied the NS scheme and our algorithm to recover each one. We present the averaged MSE as a function of the number of training functions and the number of degrees of freedom in the preconditioner. In the limit of a large number of trial models, this average MSE converges to the Frobenius (a.k.a. Hilbert-Schmidt norm), hence our claim that the inverse Hessian is approximated with a 30% relative error.

CONCLUSIONS

We have presented a new design for a preconditioner for the wave-equation Hessian based on ideas of randomized testing, pseudo-differential symbols, and phase-space localization. The proposed solution is effective both visually and quantitatively (error bounds). The precomputation requires applying the Hessian once, or a handful of times. Fitting the inverse Hessian involves solving a small least-squares problem, of size p -by- p , where p is much smaller than the size of model space. It is anticipated that the techniques developed in this paper will be of particular interest in 3D seismic imaging and with more sophisticated physical models that require identifying a few different parameters (elastic moduli, density). In that setting, properly inverting the Hessian with low complexity algorithms to unscramble the multiple parameters will be particularly desirable.

Randomized Hessian Preconditioner

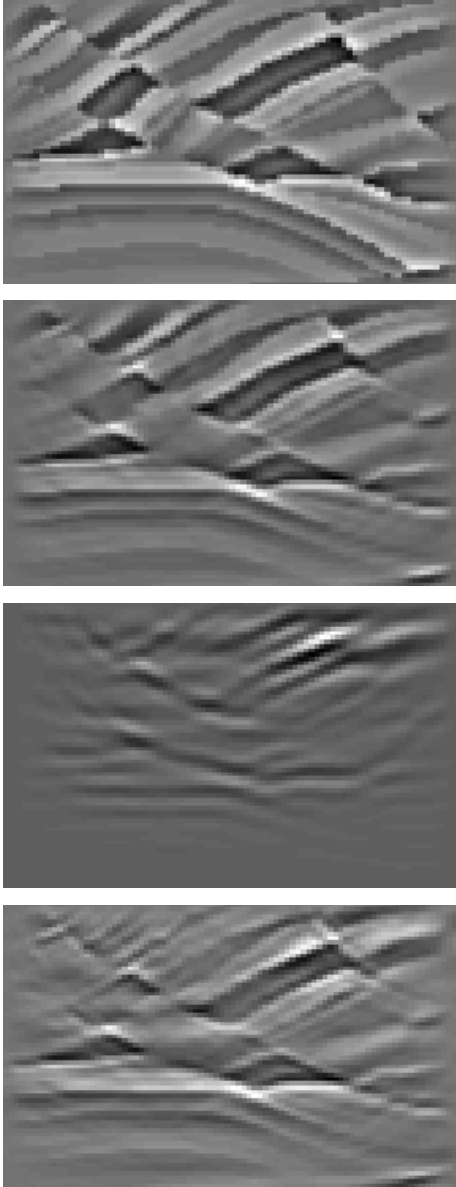


Figure 2: In order from top to bottom : Reference model; “expensive inversion”; migrated image; preconditioned migrated image.

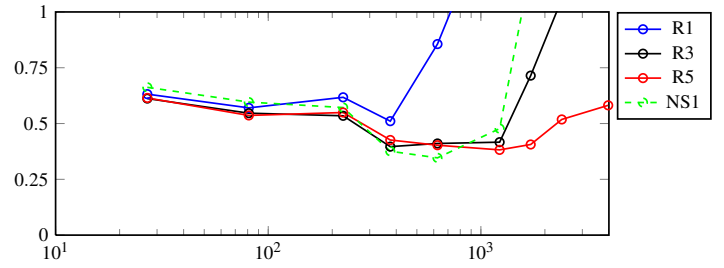


Figure 3: Relative MSE vs number of degrees of freedom for the Marmousi model. The rank of the Hessian at level $1e-3$ is ~ 2500 , and correspondingly a good number of degrees of freedom for the preconditioner is in the high hundreds.

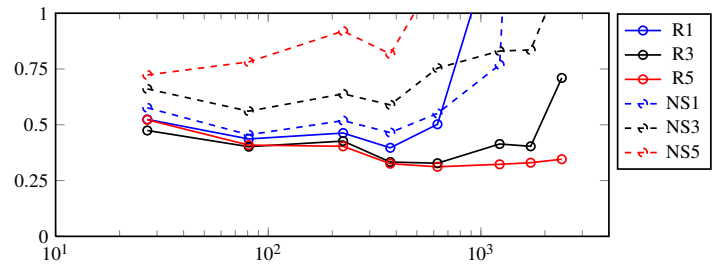


Figure 4: Generalization error (Relative MSE vs number of degrees of freedom). Performance increases with the number of training models (randomized strategy, solid lines) but decreases with the dimension of the Krylov subspace (deterministic strategy, dotted lines).

ACKNOWLEDGMENTS

PDL and LD are grateful to Total SA, the National Science Foundation, and the Alfred P. Sloan Foundation for support.

Randomized Hessian Preconditioner

REFERENCES

- Bao, G., and W. W. Symes, 1996, Computation of pseudo-differential operators: *SIAM J. Sci. Comput.*, **17**, no. 2, 418–429.
- Beylkin, G., 1985, Imaging of discontinuities in the inverse scattering problem by inversion of a causal generalized radon transform: *J. Math. Phys.*, **26**, 99–108.
- Candes, E. J., L. Demanet, D.L. Donoho, and L. Ying, 2006, Fast discrete curvelet transforms: *Multiscale Model. Simul.*, **5**, no. 3, 861–899.
- Candes, E. J., and D. L. Donoho, 2003a, Continuous curvelet transform: I. resolution of the wavefront set: *Appl. Comput. Harmon. Anal.*, **19**, 162–197.
- , 2003b, Continuous curvelet transform: II. discretization and frames: *Appl. Comput. Harmon. Anal.*, **19**, 198–222.
- Chiu, J., and L. Demanet, 2012, Matrix probing and its conditioning: *SIAM J. Numerical Analysis*, **50**, 171–193.
- Claerbout, J., and D. Nichols, 1994, Spectral preconditioning: Technical Report 82, Stanford University.
- Demanet, L., P. Letourneau, N. Boumal, H. Calandra, and S. Snelson, 2012, Matrix probing: a randomized preconditioner for the wave-equation hessian: *Appl. and Comp. Harmon. Anal.*, **32**, 155–168.
- Demanet, L., and L. Ying, 2011, Discrete symbol calculus: *SIAM Review*, **53**, 71–104.
- Guitton, A., 2004, Amplitude and kinematic corrections of migrated images for nonunitary imaging operators: *Geophysics*, **69**, 1017–1024.
- Herrmann, F., 2003, Multi-fractional splines: application to seismic imaging: *Proc. SPIE Wavelets X conf.*, **5207**.
- Herrmann, F., C. Brown, Y. Erlangga, and P. Moghaddam, 2009, Multi-fractional splines: application to seismic imaging: *Geophysics*, **74**, 41–46.
- Nammour, R., 2008, Approximate inverse scattering using pseudodifferential scaling: Master's thesis, Rice University.
- Nammour, R., and W. W. Symes, 2009, Approximate constant-density acoustic inverse scattering using dip-dependent scaling: *SEG 2009 Proceedings*.
- Rakesh, 1988, A linearized inverse problem for the wave equation: *Comm. PDE*, **13**, no. 5, 53–601.
- Rickett, J. E., 2003, Illumination-based normalization for wave-equation depth migration: *Geophysics*, **68**, 1371–1379.
- Symes, W., 1995, *Mathematics of reflection seismology*.
- Symes, W. W., 2008, Approximate linearized inversion by optimal scaling of prestack depth migration: *Geophysics*, **73**, 23–35.
- ten Kroode, A., D. J. Smit, and A. R. Verdel, 1998, A microlocal analysis of migration: *Wave Motion*, **24**, 149–172.