

BFA 2013
Grenfell Campus



Visual Art
Class Of 2013

Division of Arts and Sciences
College of Arts and Sciences

Memorial University of Newfoundland
Corner St. John's Rd.
St. John's, NL
Class Of 2013

Visual Art

Class Of 2013

Division of Fine Arts
Grenfell Campus
Memorial University of Newfoundland
Corner Brook, NL
Class Of 2013

From the Vice Principal

When you opened the cover of this publication, you opened a window – one that looks into a world of inspiration, creativity and anticipation. This catalogue is more than a sample of the works of our graduating visual art students. It is a representation of hard work, courage and pride.

Each page is a celebration of a personal journey: four years of academic study and studio practice across a range of disciplines. How rich these students are with talent. And how blessed we are to have this window into their world.

As you leaf through this publication, think about the sphere of influence of these students: how will they continue to influence the world? Visual arts – the richness, colours and textures – are a reflection of life, but they also inspire it – change it.

Painter and sculptor Joan Miró said, “To be an artist is to believe in life. That is what I see herein: pages and pages of life. To the graduates: Take what you’ve learned at Grenfell, and unleash your vision and your influence on the world around you. And thank you – you have certainly helped to change the way in which I view the world. Congratulations!

Mary Bluehardt PhD
Vice-President (Grenfell Campus)
Memorial University of Newfoundland





David Aylward

Bay Roberts, NL



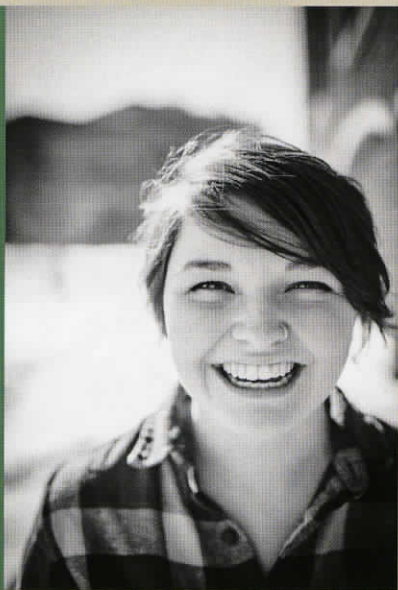
The House Down the Hill
(50.8cm x 65.5cm x 55.9cm)
mixed media

Candace Cunning

Corner Brook, NL

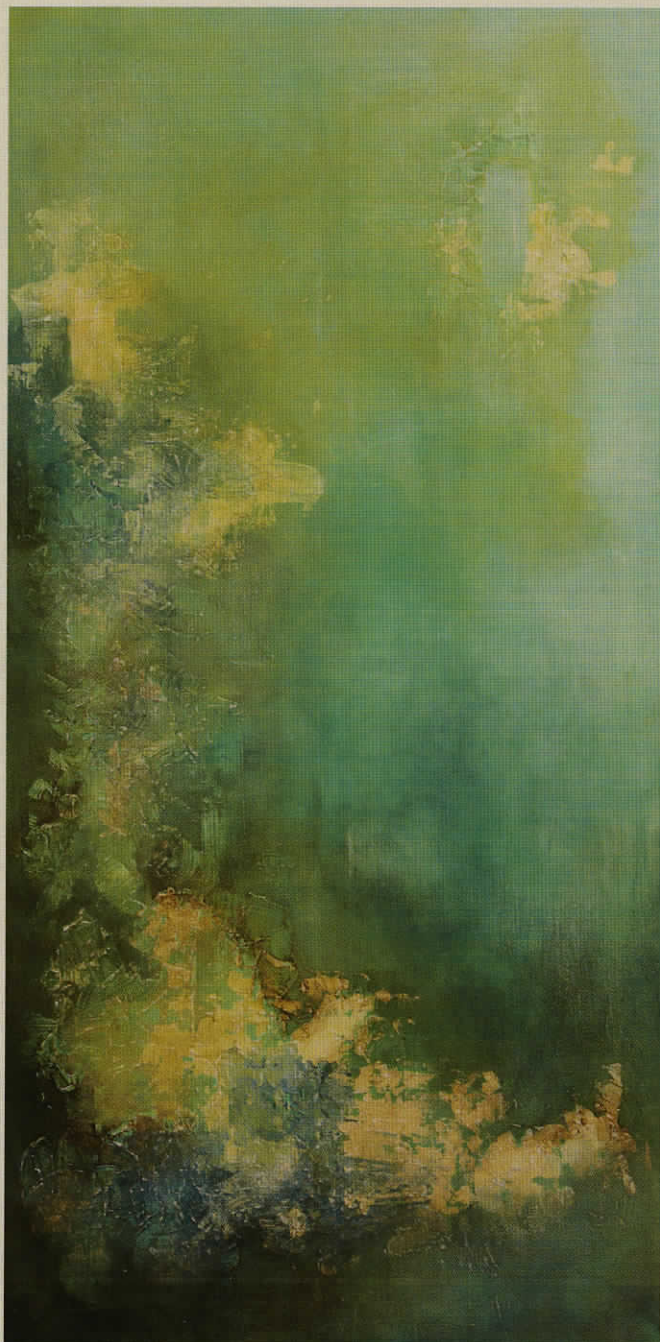


Steady Brook Falls
(20.3cm x 40.6cm)
digital photograph



Kathleen Davis

St. John's, NL



Untitled
(61cm x 127cm)
oil on canvas



Delicate
(Variable Size)
35mm colour print



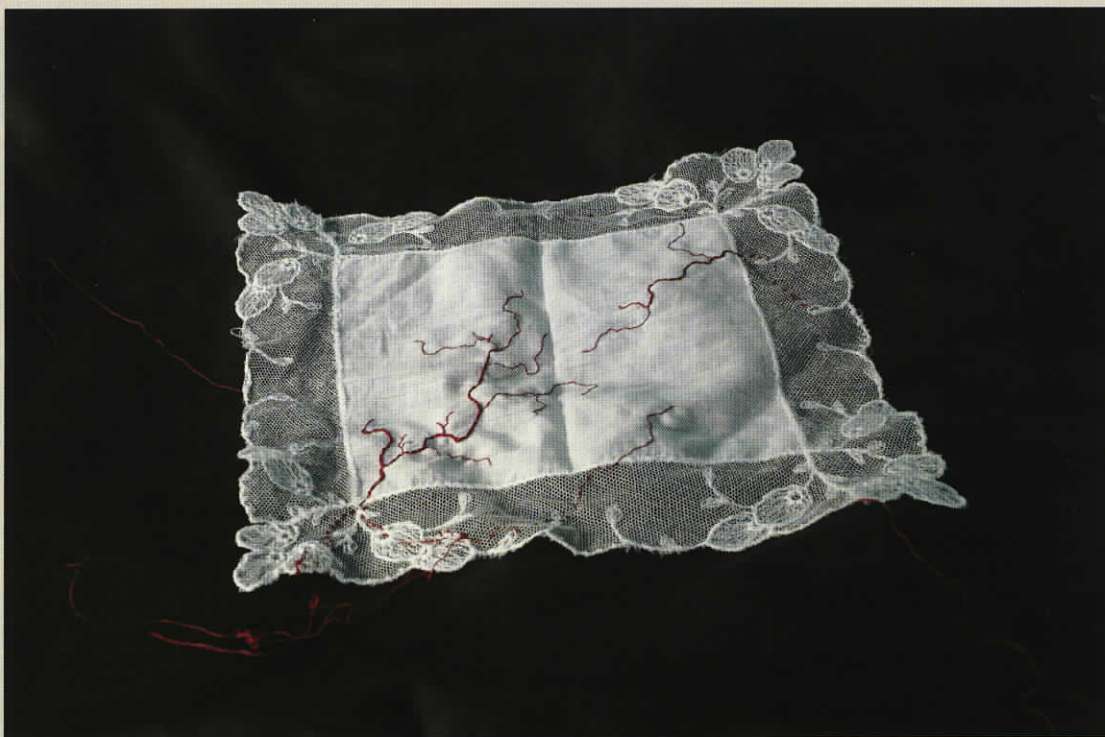
Cynthia Dunphy

Placentia, NL



Whitney French

Goose Bay, NL



Untitled
(22.1cm x 17.8cm)
embroidery

Joe Fowler

Corner Brook, NL



Chatter
(152.3cm x 74.8cm)
vinyl sticker



Sara Gardiner

Conche, NL



Disturbances
(109.8cm x 86.2cm)
facepaint on canvas



Raven Lannon

Bishops Falls, NL

Double Identity
(variable sizes)
digital media
2012-2013



Kris Lee

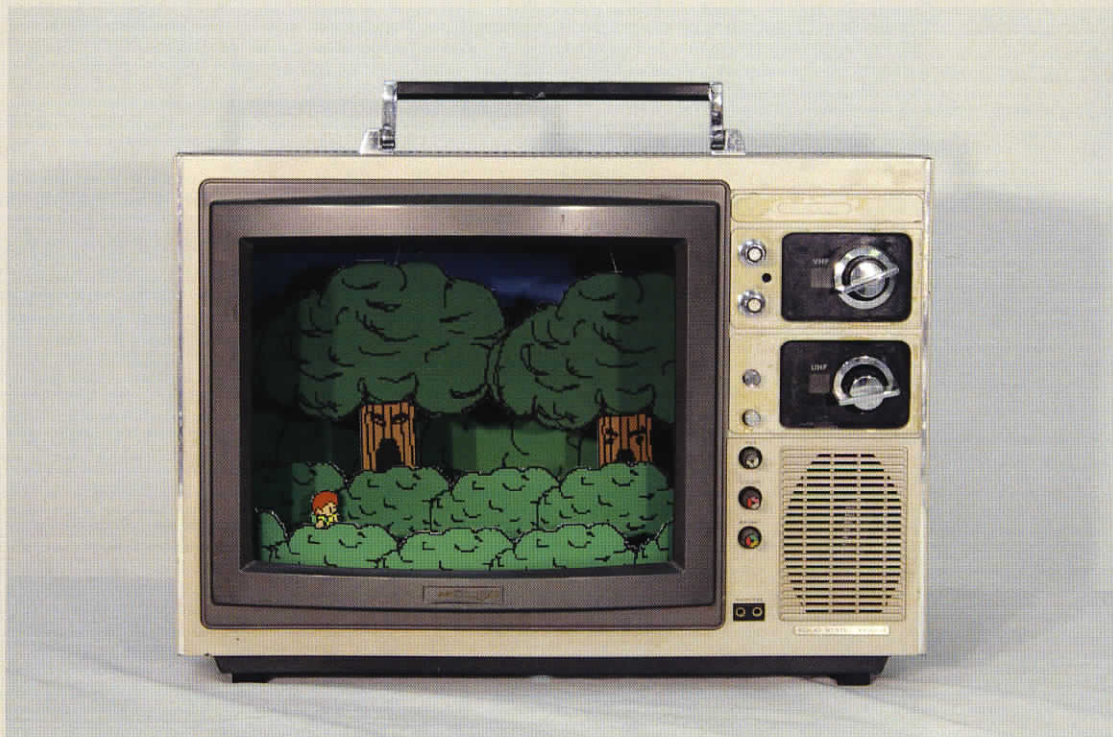
Corner Brook, NL



Nan and Mo
(2.5cm x 5.3cm) (17.8cm x 6.4cm)
stop motion puppets, mixed media

Andrew Lynch

Bellevue, NL

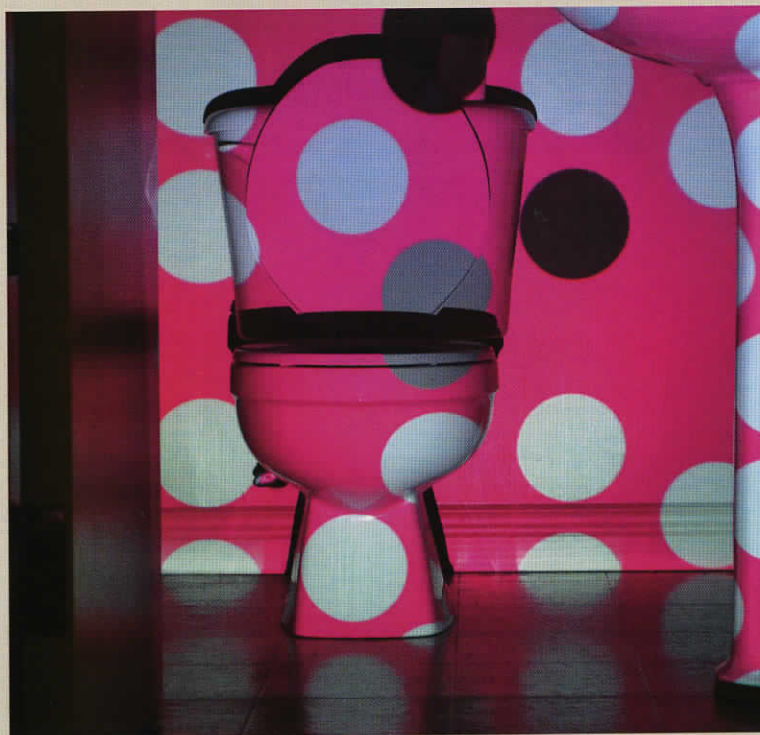


Into the Forest
(45.7cm x 29.7cm x 25.5cm)
mixed media



Laura Matchim

Paradise, NL



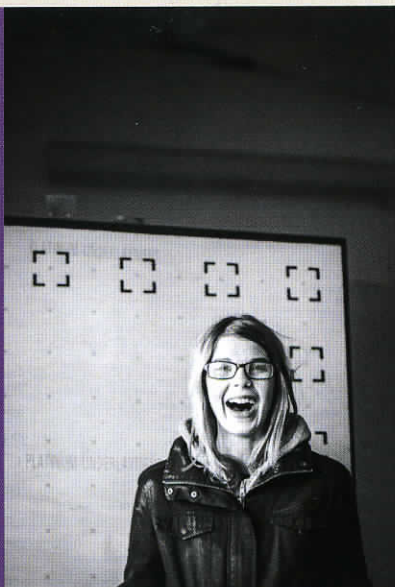
Untitled
(variable size)
projected animation

Virginia Mitford

Lansing, YK



Shelter
(68.6cm x 123.7cm)
silver gelatin print



Meagan Musseau

Corner Brook, NL



584 Minutes
(118.4cm x 88.9cm)
silk screen on raw canvas

Brittany Noseworthy

Ship Cove, NL

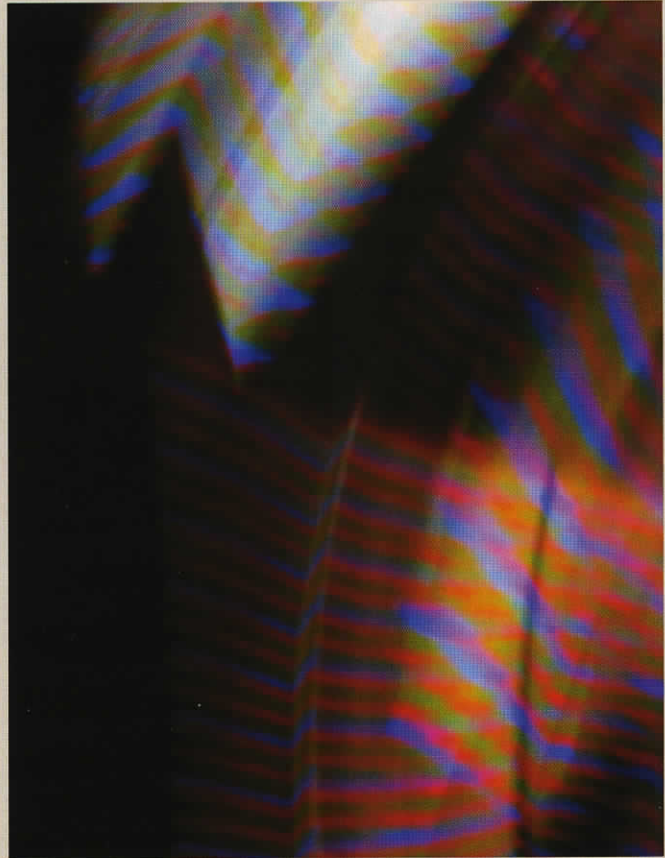


Vulnerability
(17.8cm x 17.8cm)
four colour separation silk screen



Kathy Oke

St. Philip's, NL



Untitled (Waves 02)
(Variable size)
digital photograph

Mitchell Peddle

Spaniard's Bay, NL



Neon Installation
(30.5cm x 30.5cm x 45.7cm)
acrylic paint, string



Philip Rudderham

Sydney, NS



A Man is Tall Enough
(63.5cm x 78.7cm)
graphite drawing

Ashley Sutherland

North River, NS

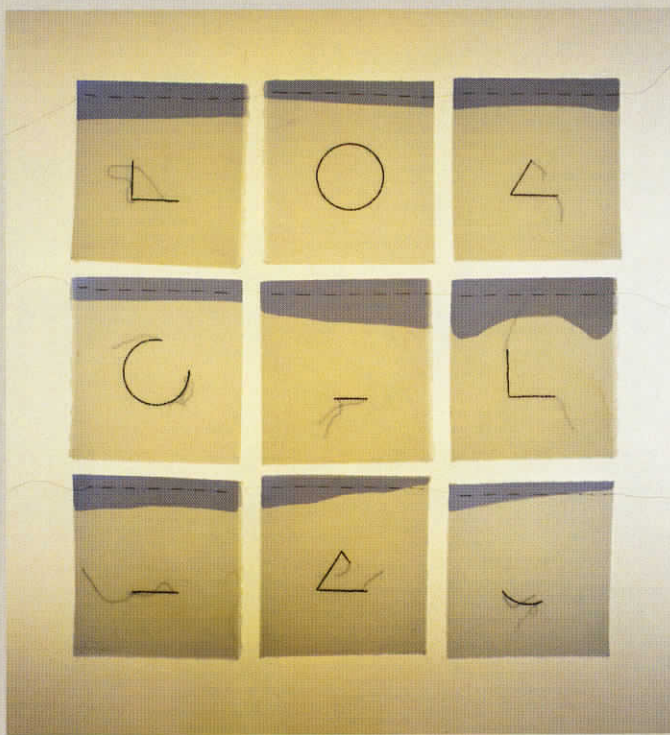


Aberrant Misdirection
(15cm x 30.5cm) (23cm x 37.5cm) (30.5cm x 61cm)
ceramic

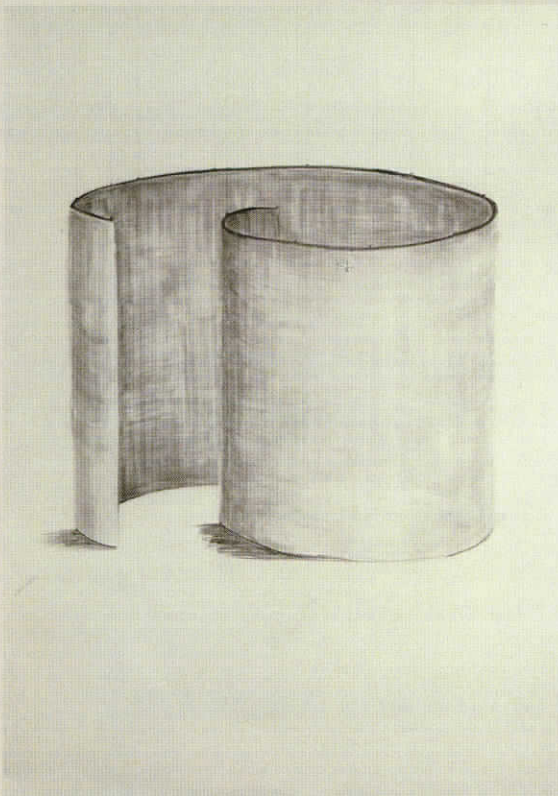


Jessica Tuff

Corner Brook, NL



Untitled
(61cm x 61cm)
waxed paper, thread



Maria White

St. John's, NL



Surround Sound
(50.8cm x 65.5cm x 55.9cm)
sound art installation

COLOPHON

**Joe Fowler - Design and Student Art Work (Davis,
Foss, Gardiner, Lee, Rudderham, and White)**

Candace Cunning - Student Portraits

Pierre Leblanc - Editing and Adjustments

©2013 - Division of Fine Arts (Visual Arts)

**Grenfell Campus
Memorial University of Newfoundland
Corner Brook, NL**



An abstract graphic design on the left side of the page. It consists of several overlapping, semi-transparent shapes in shades of grey, blue, and black. A prominent dark grey shape in the foreground has a pattern of small, dark silhouettes of leaves or flowers. The background is a light, textured grey.

David Aylward
Candace Cunning
Kathleen Davis
Cynthia Dunphy
Whitney Foss
Joe Fowler
Sara Gardiner
Raven Lannon
Kristy Lee
Andrew Lynch
Laura Matchim
Virginia Mitford
Meagan Musseau
Brittany Noseworthy
Kathy Oke
Mitchell Peddle
Phillip Rudderham
Ashley Sutherland
Jessica Tuff
Maria White