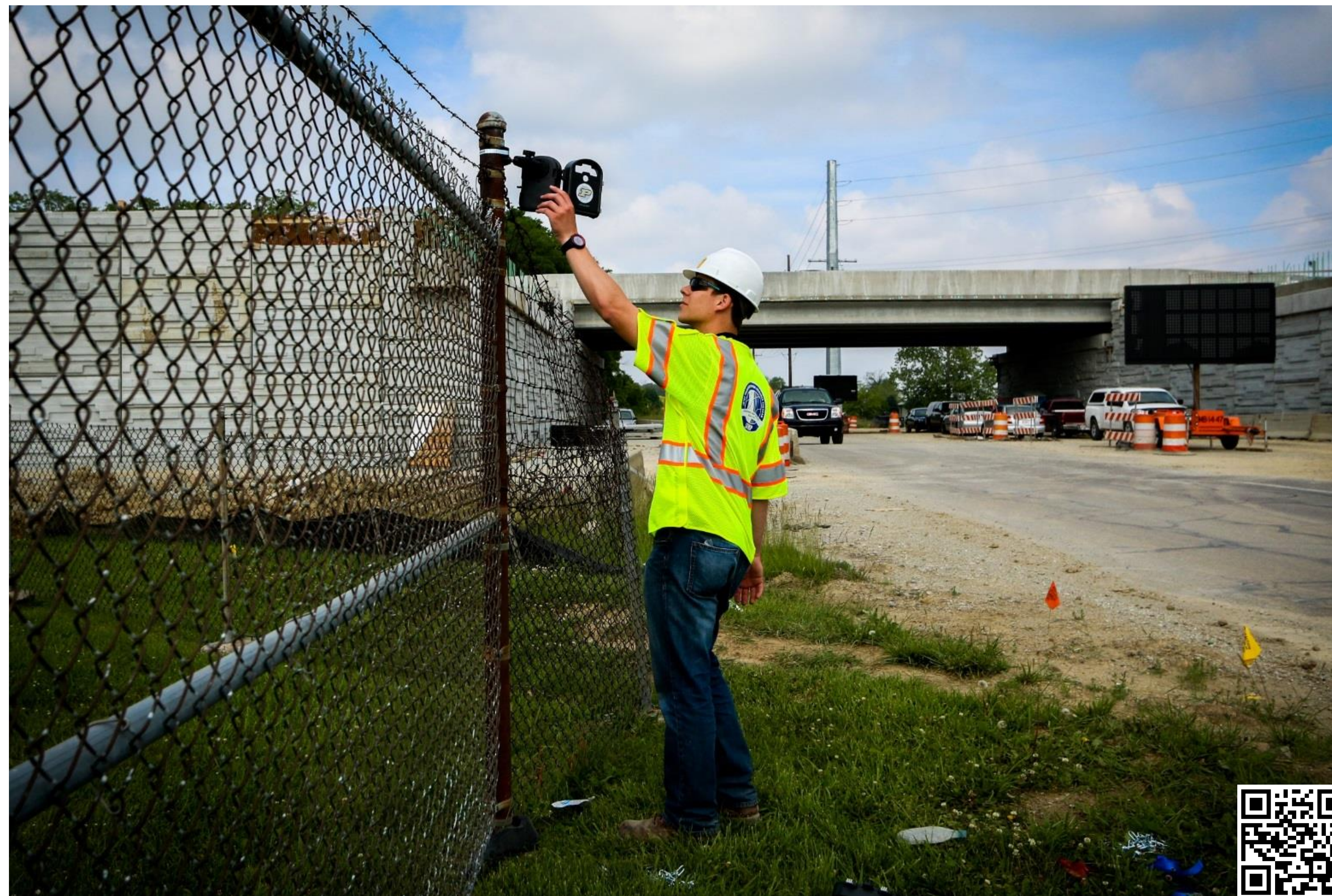


Construction Time-Lapse Photography

**For Education, Training,
and Quality Control**



PURDUE
UNIVERSITY



Existing road is removed by asphalt milling machine



Earthwork begins on the construction site



Earthwork and grading continue



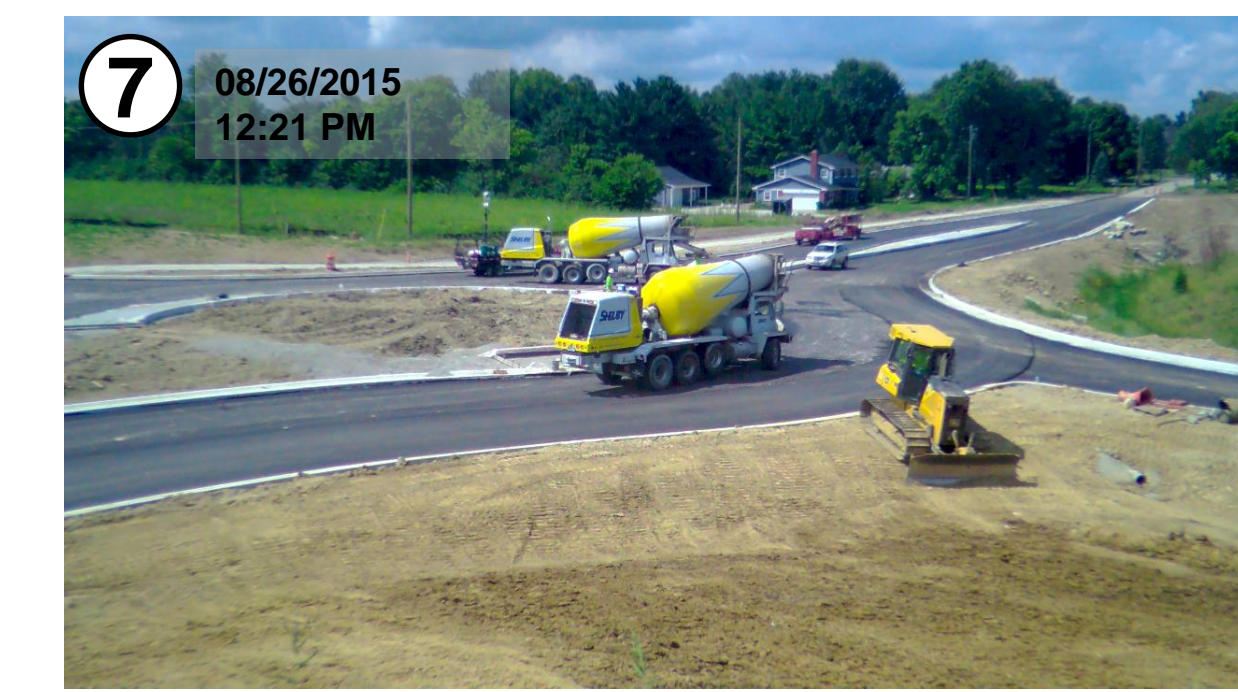
Soil stabilization process is completed



Hot Mix Asphalt base layer is constructed



Concrete shoulders are slip-formed



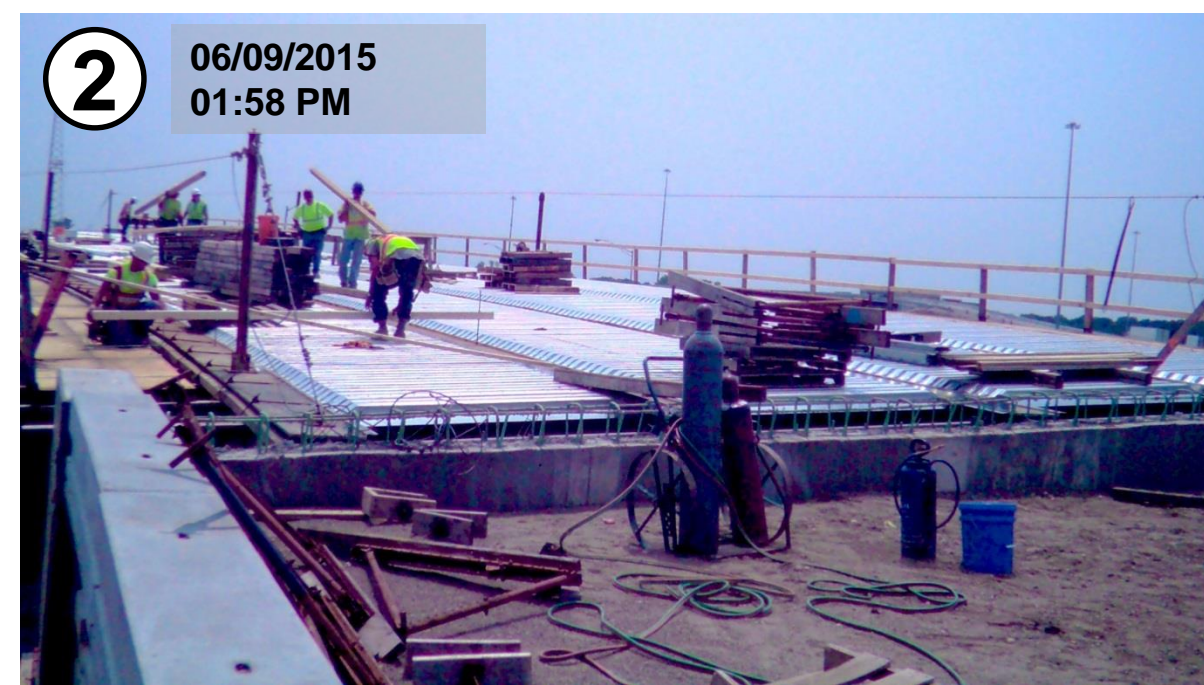
Roundabout truck apron is constructed



Construction continues on site



Deck pans being placed on steel bridge beams



Wood safety guardrail being constructed



Beginning of steel layout on bridge deck



Bridge deck steel reinforcement being placed



Concrete is placed on the bridge deck



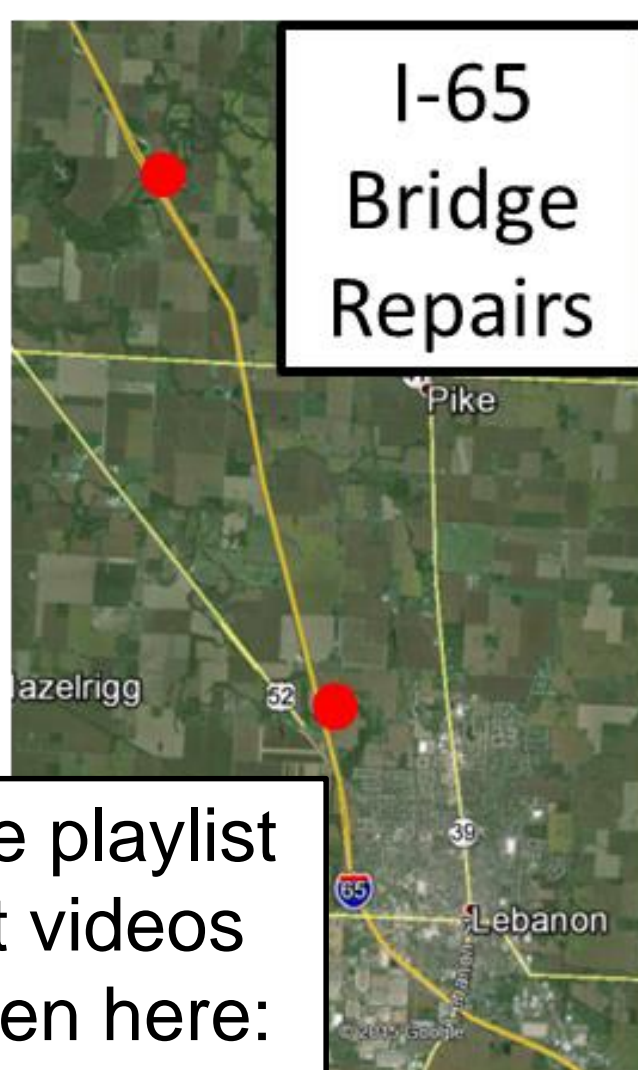
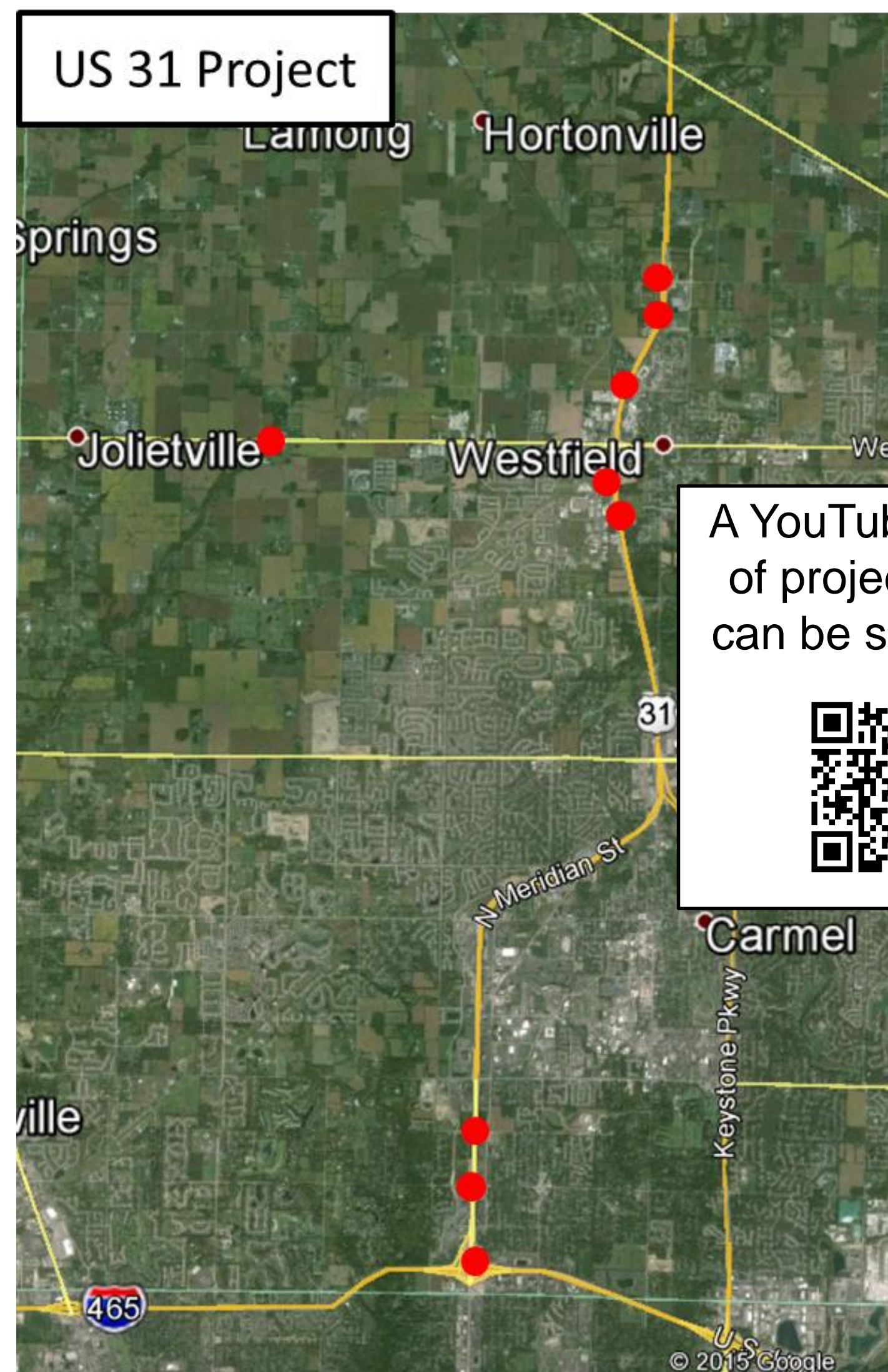
Concrete is covered with burlap for curing process



Concrete cures in accordance with INDOT standards



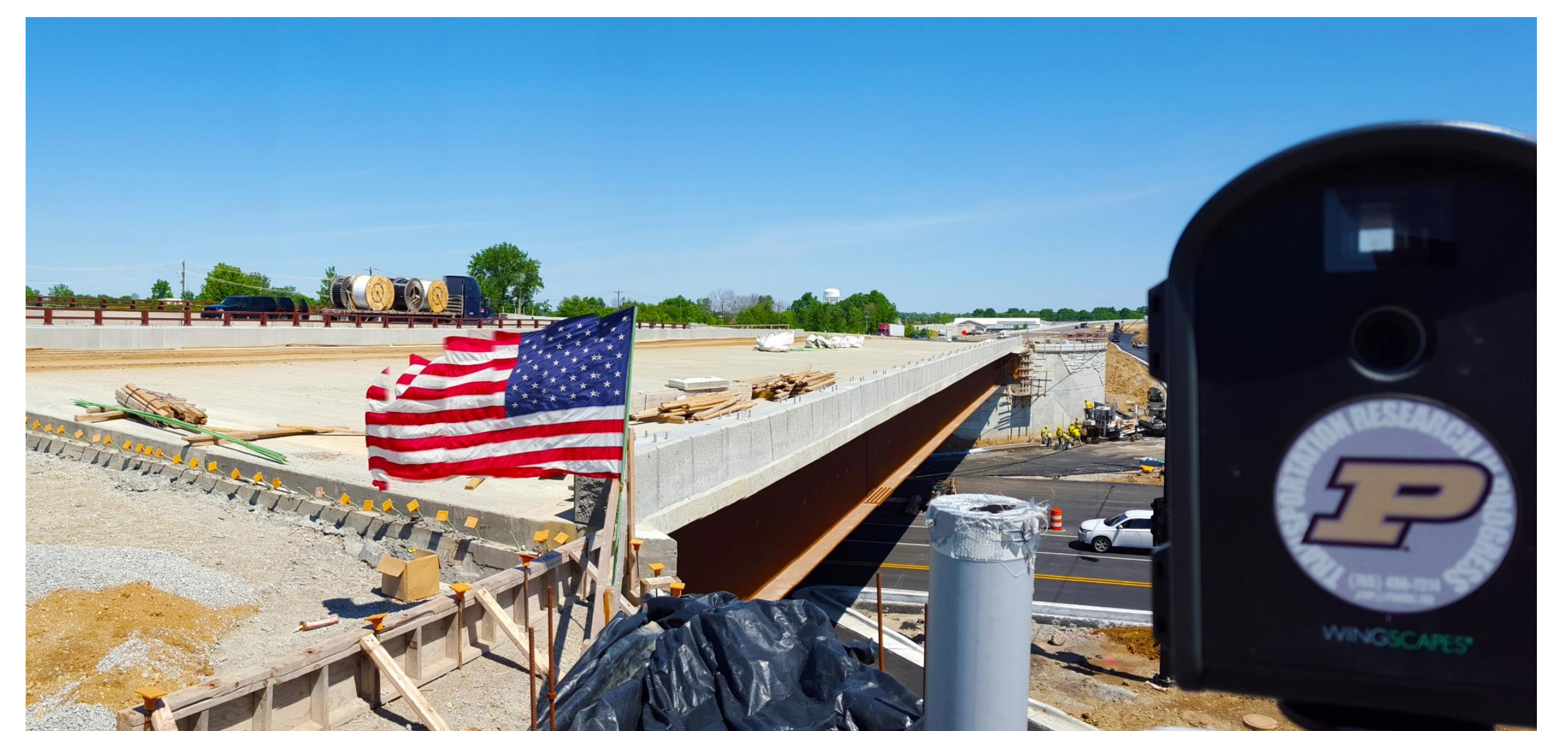
Concrete is uncovered and bridge work continues



A YouTube playlist of project videos can be seen here:

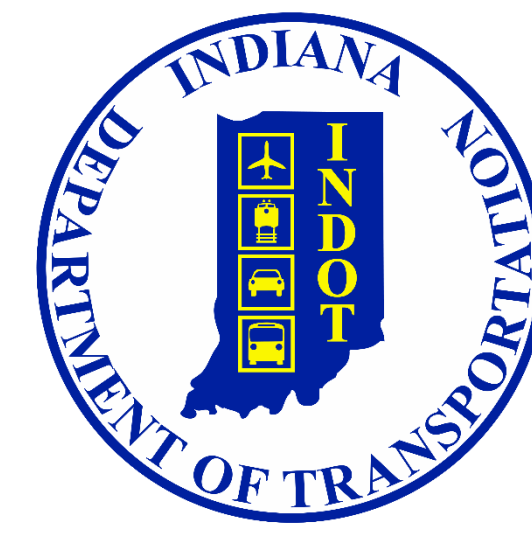


Tippecanoe County



Construction Time-Lapse Photography

**For Education, Training,
and Quality Control**



**PURDUE
UNIVERSITY**



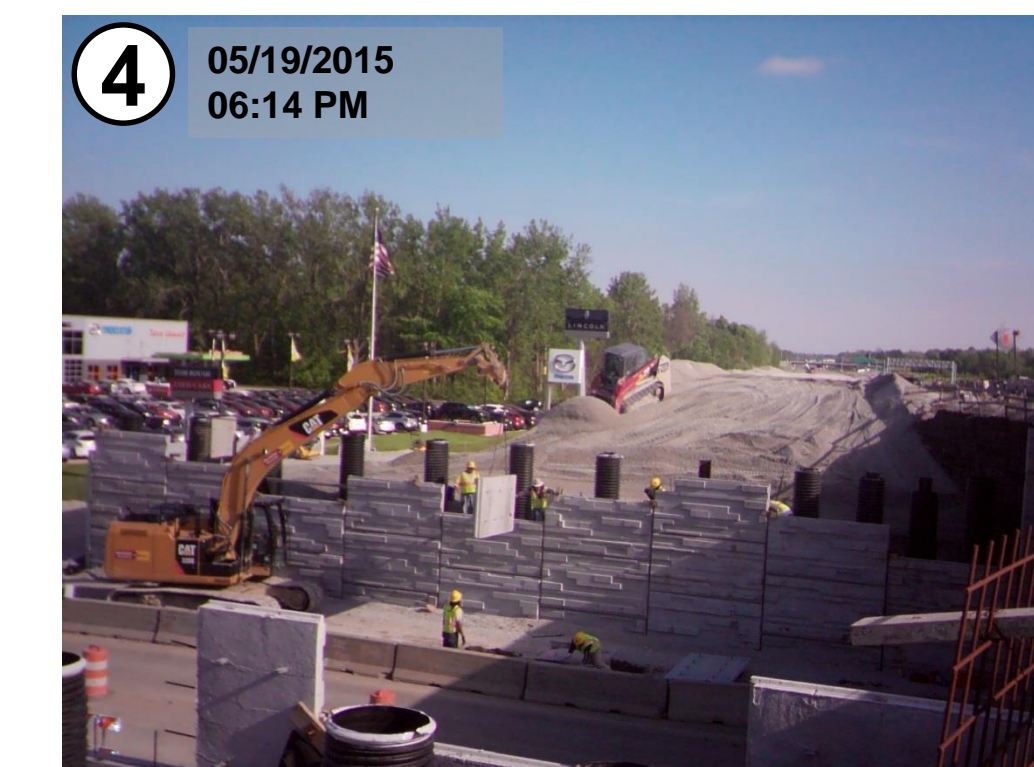
H-Piles are driven; preparation for MSE Wall



Structure backfill placed for MSE Wall



MSE Wall construction - panel placement



MSE Wall construction continued



MSE Wall complete - Beam seats constructed



Concrete bridge beam placement



Bridge deck construction



Concrete is poured for bridge deck



Concrete is poured for bridge approach slab



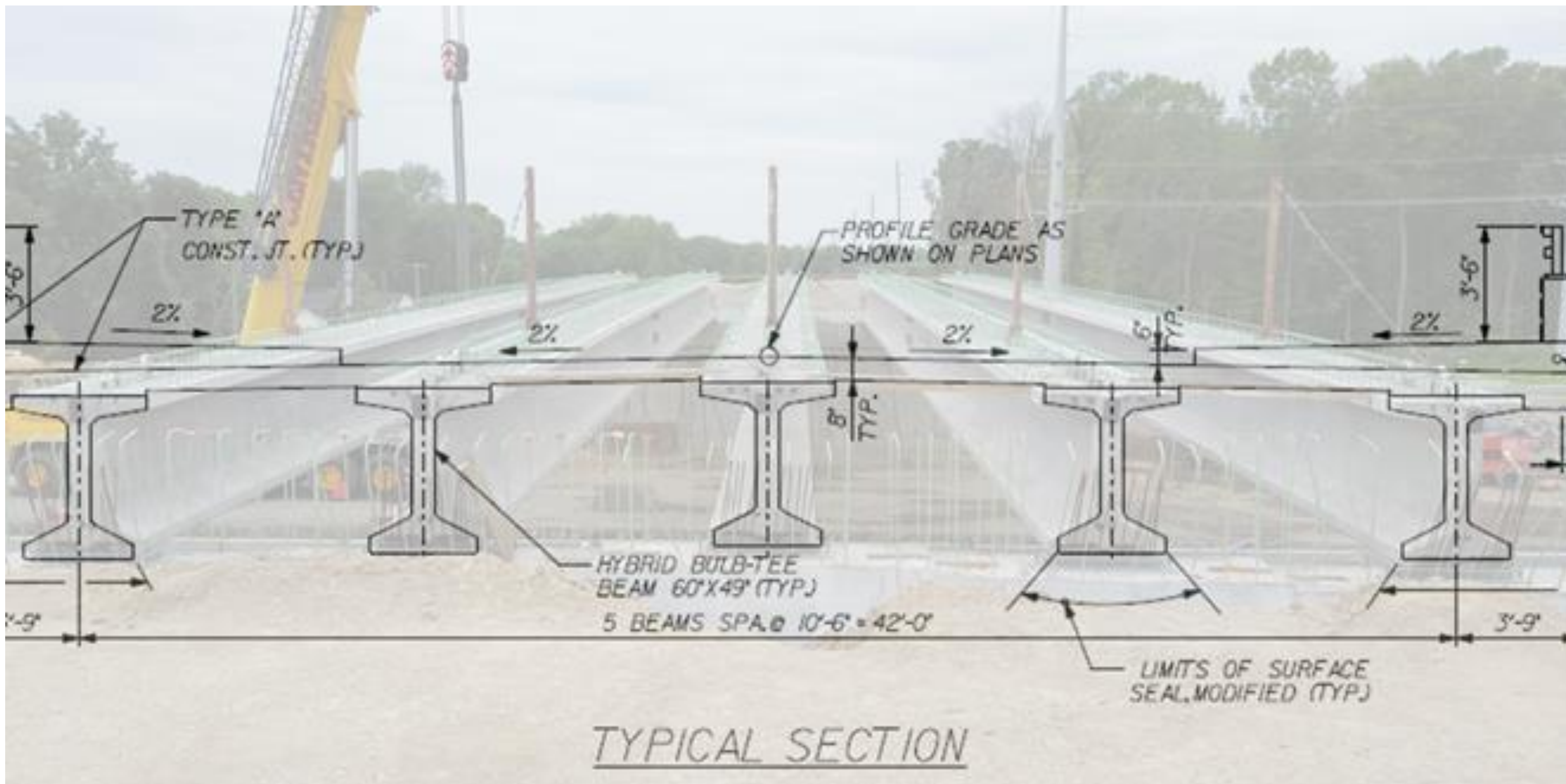
Steel is laid out for concrete safety barrier



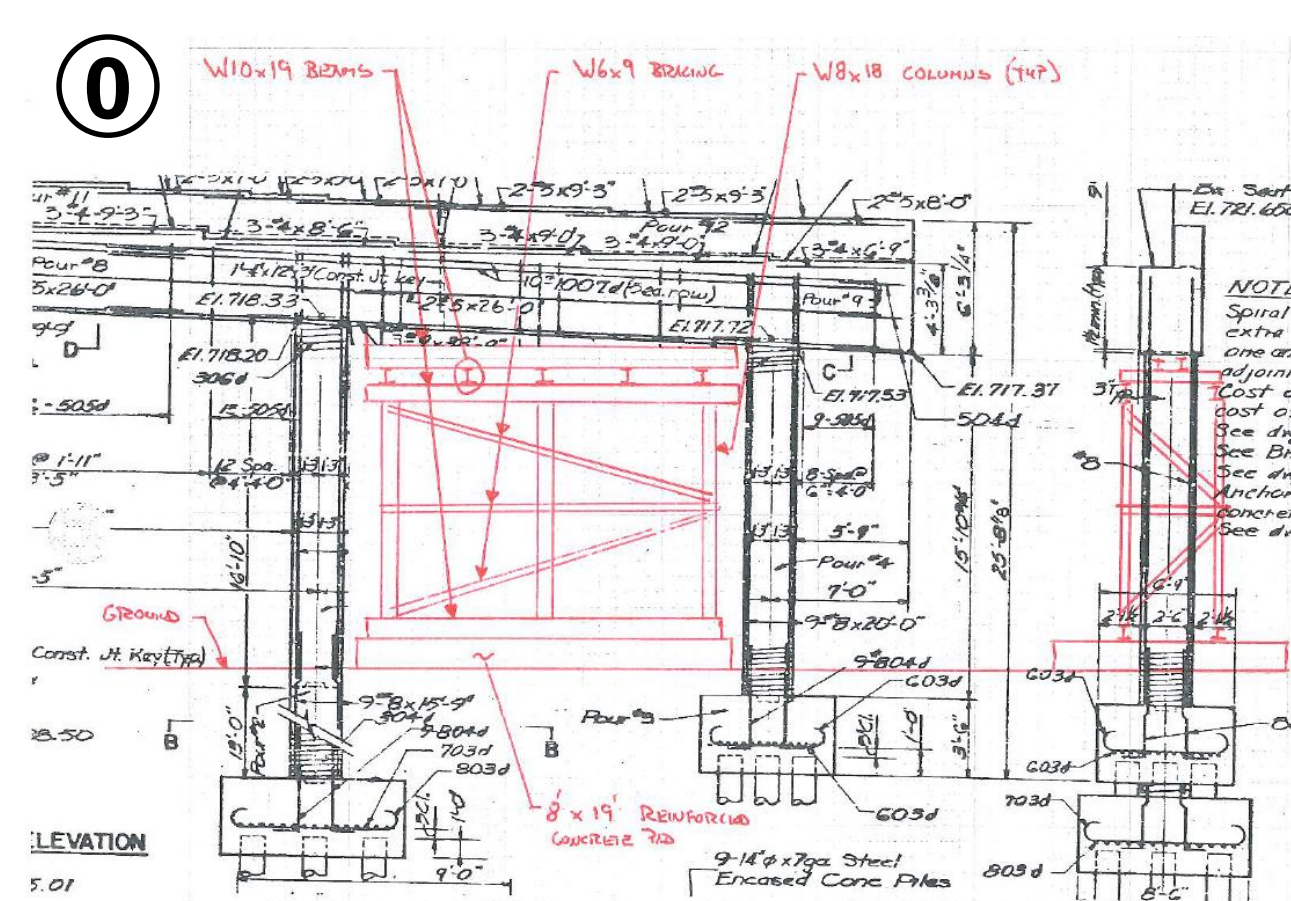
Concrete safety barrier is slip-formed



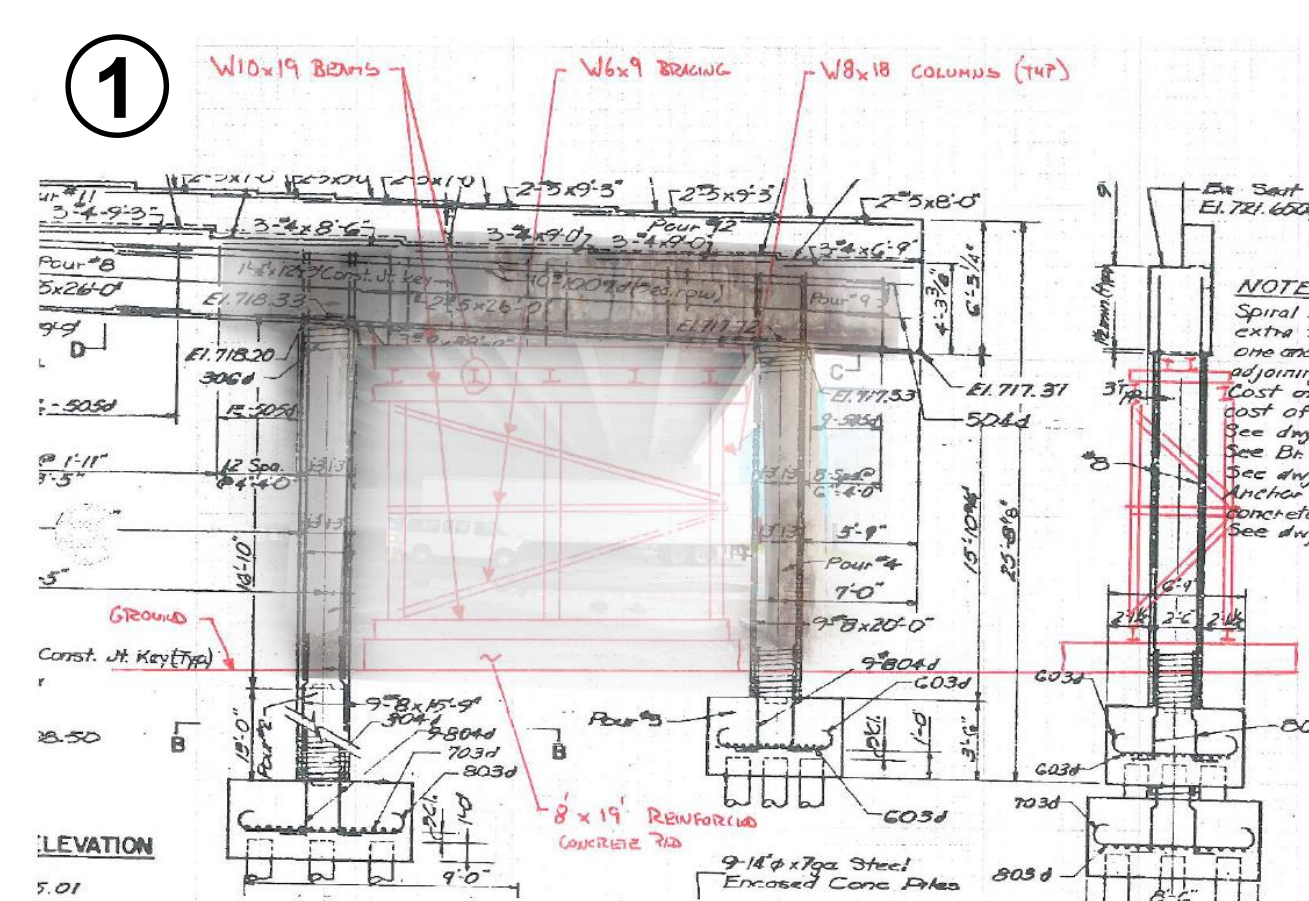
Concrete cures - Bridge is complete



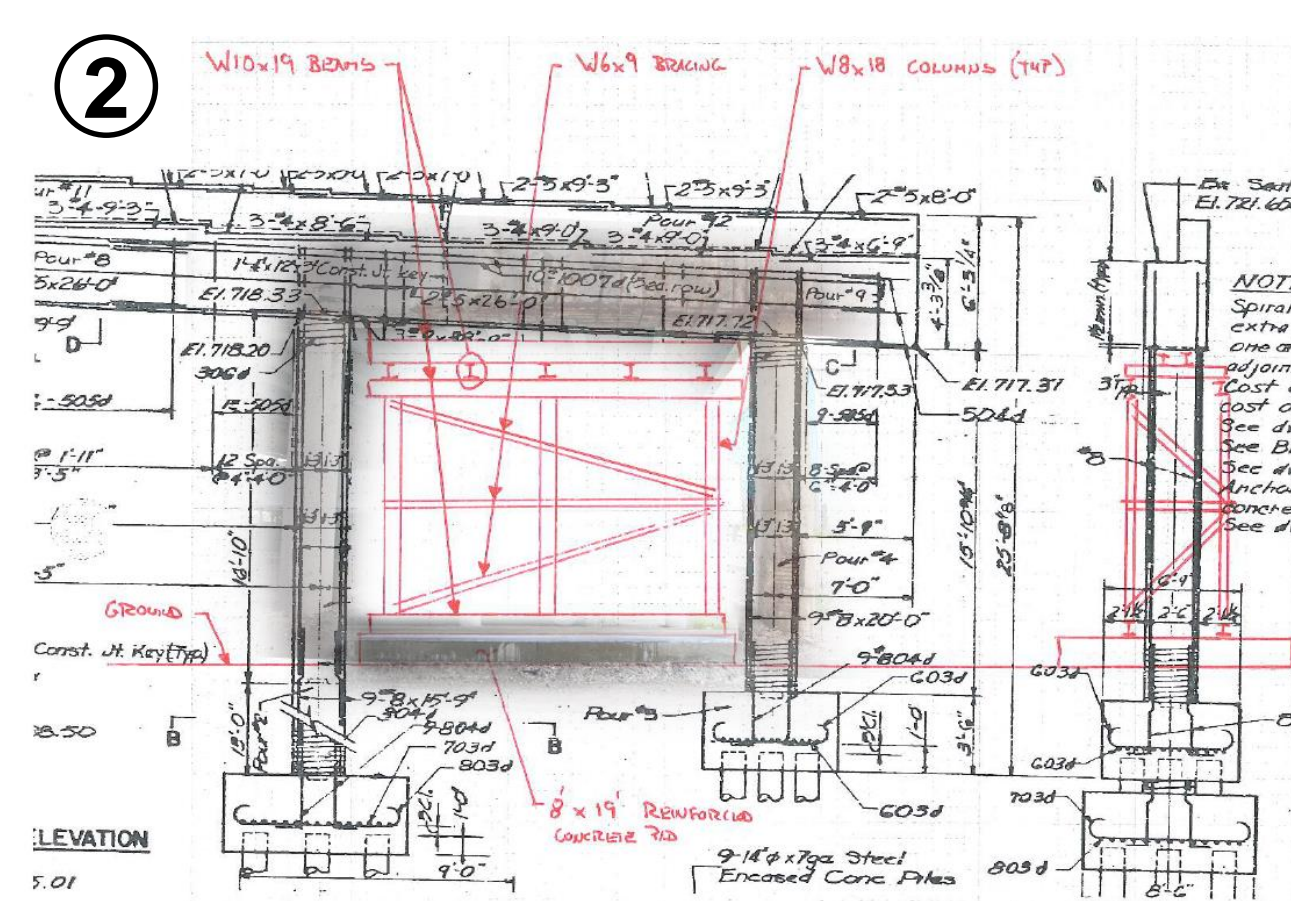
Above: Bridge plan overlay - 60"x49" Prestressed Hybrid Bulb-Tee Beams for 111th Street Structure over US 31 in Carmel, Indiana



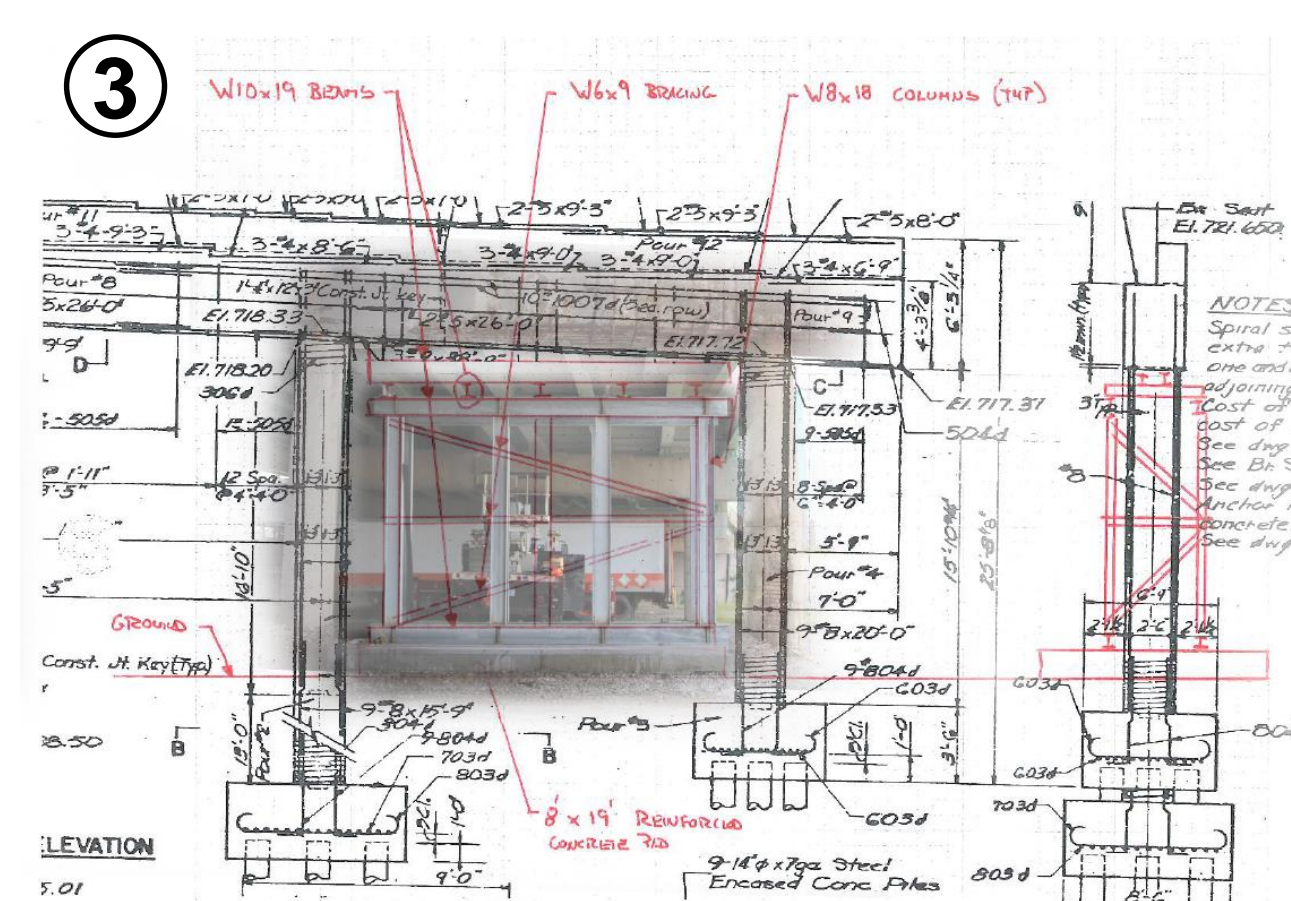
Plan Drawing: Emergency support structure for bridge



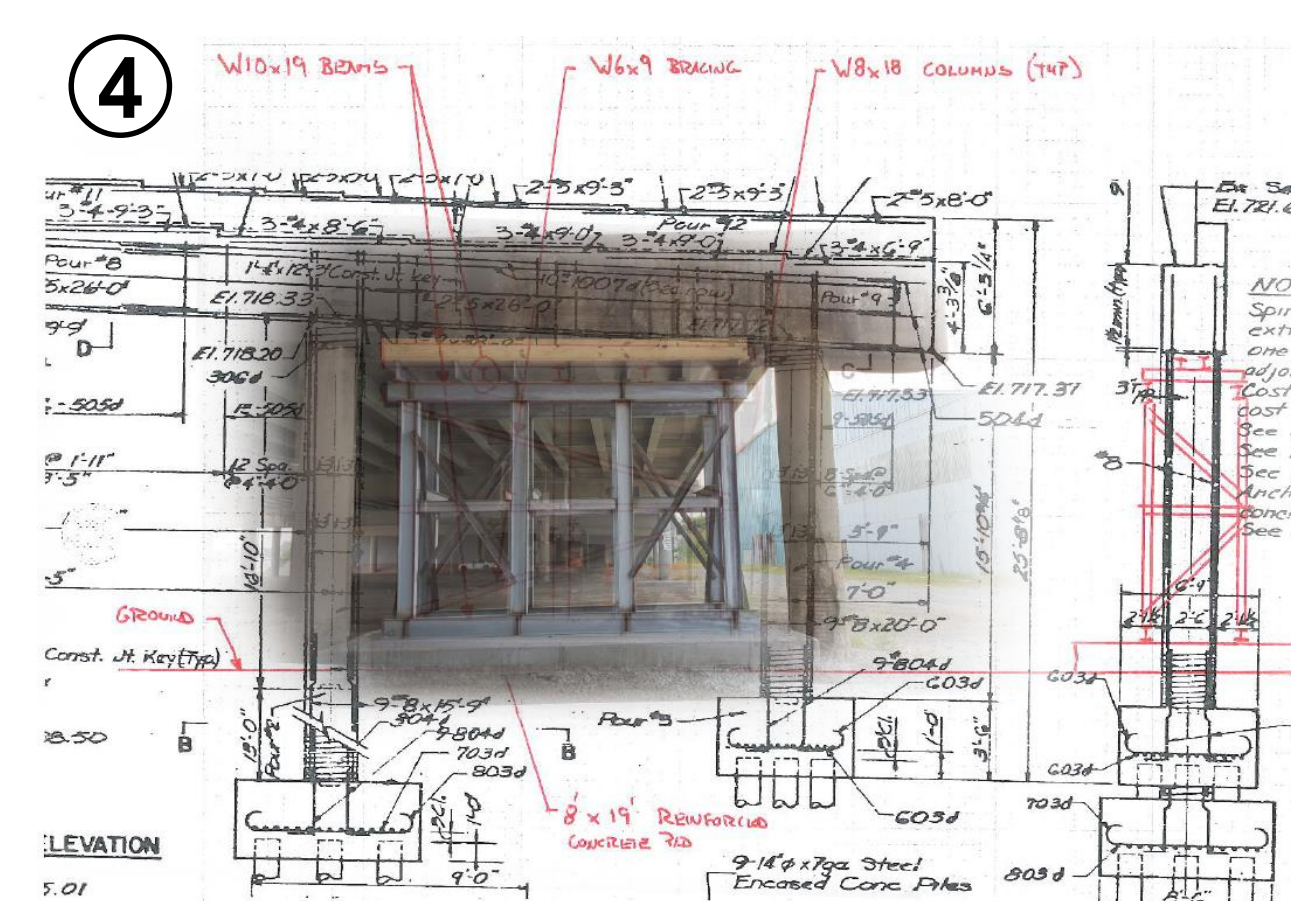
Overlay #1: existing bridge structure



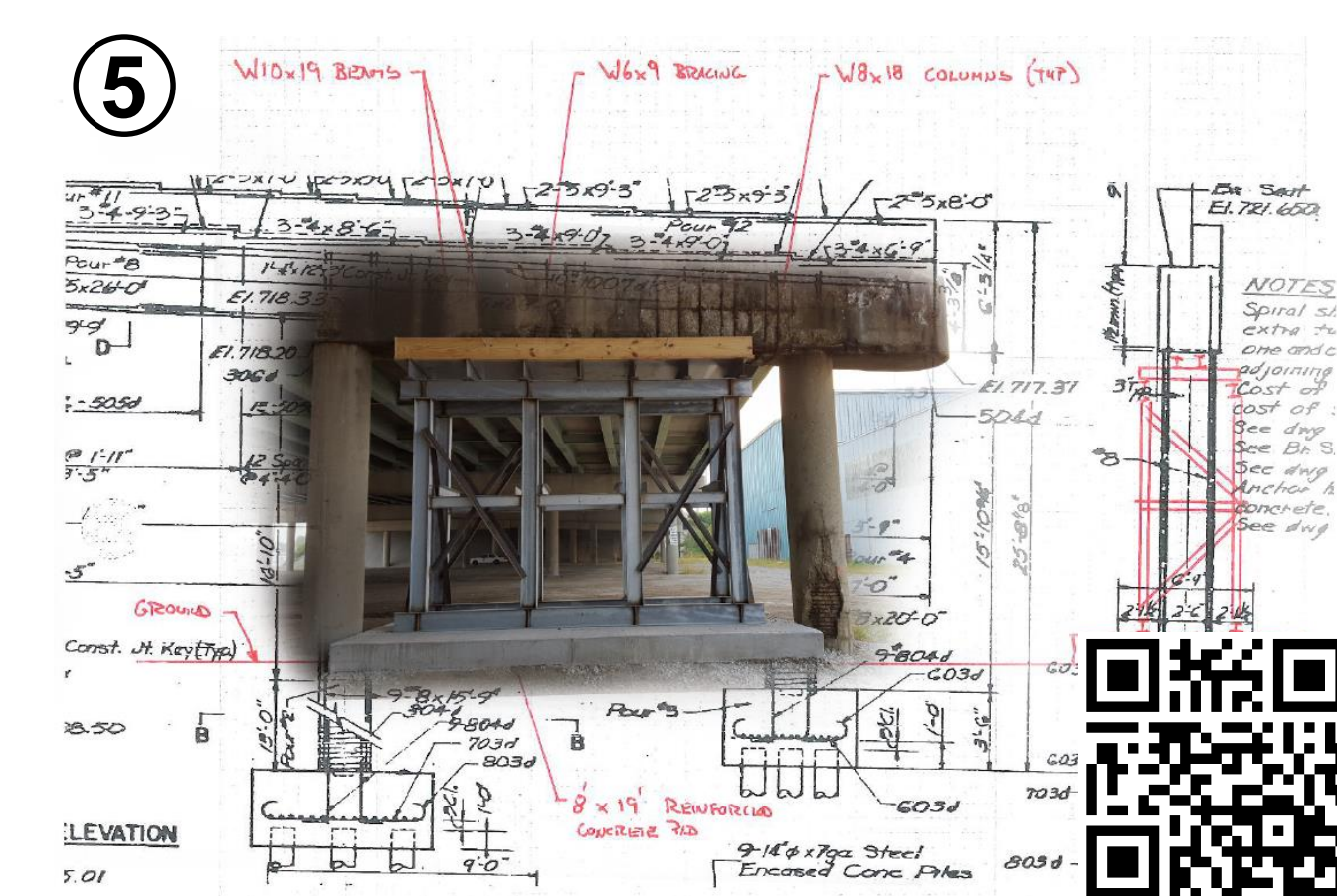
Overlay #2: Base slab constructed



Overlay #3: Steel support structure construction



Overlay #4: Construction near completion



Overlay #5: Construction complete

