

University of Nebraska - Lincoln

DigitalCommons@University of Nebraska - Lincoln

US Ag in Drought Archive

Drought -- National Drought Mitigation Center


11-1-2016

U.S. Drought Monitor, November 1, 2016

Deborah J. Bathke

University of Nebraska-Lincoln, dbathke2@unl.edu

Follow this and additional works at: <http://digitalcommons.unl.edu/droughtarchive>

 Part of the [Agricultural Economics Commons](#), [Environmental Indicators and Impact Assessment Commons](#), [Environmental Monitoring Commons](#), [Hydrology Commons](#), [Natural Resource Economics Commons](#), [Other Environmental Sciences Commons](#), and the [Water Resource Management Commons](#)

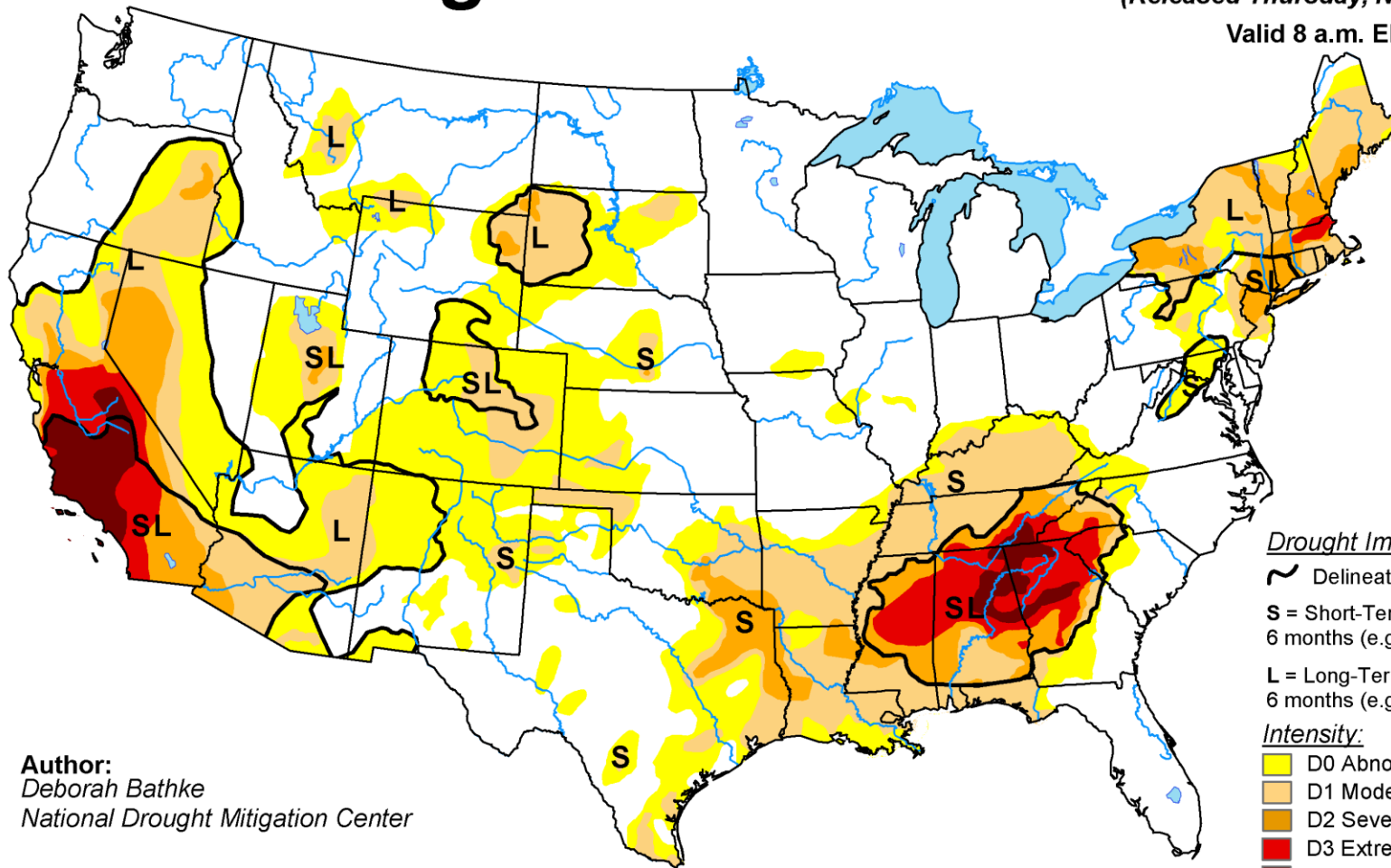
Bathke, Deborah J., "U.S. Drought Monitor, November 1, 2016" (2016). *US Ag in Drought Archive*. 215.
<http://digitalcommons.unl.edu/droughtarchive/215>

This Article is brought to you for free and open access by the Drought -- National Drought Mitigation Center at DigitalCommons@University of Nebraska - Lincoln. It has been accepted for inclusion in US Ag in Drought Archive by an authorized administrator of DigitalCommons@University of Nebraska - Lincoln.

U.S. Drought Monitor

November 1, 2016
(Released Thursday, Nov. 3, 2016)

Valid 8 a.m. EDT



Author:
Deborah Bathke
National Drought Mitigation Center

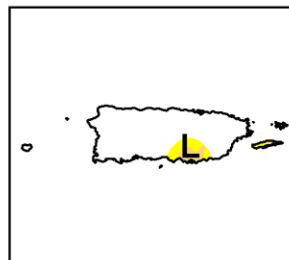
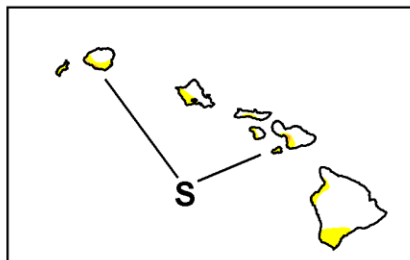
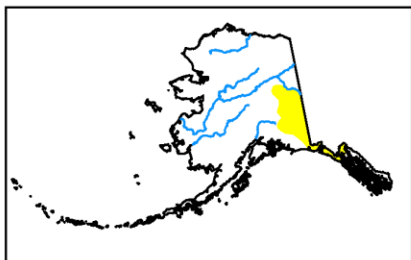
Drought Impact Types:

- ~ Delineates dominant impacts
- S = Short-Term, typically less than 6 months (e.g. agriculture, grasslands)
- L = Long-Term, typically greater than 6 months (e.g. hydrology, ecology)

Intensity:

- Yellow: D0 Abnormally Dry
- Light Orange: D1 Moderate Drought
- Dark Orange: D2 Severe Drought
- Red: D3 Extreme Drought
- Dark Red: D4 Exceptional Drought

The Drought Monitor focuses on broad-scale conditions. Local conditions may vary. See accompanying text summary for forecast statements.



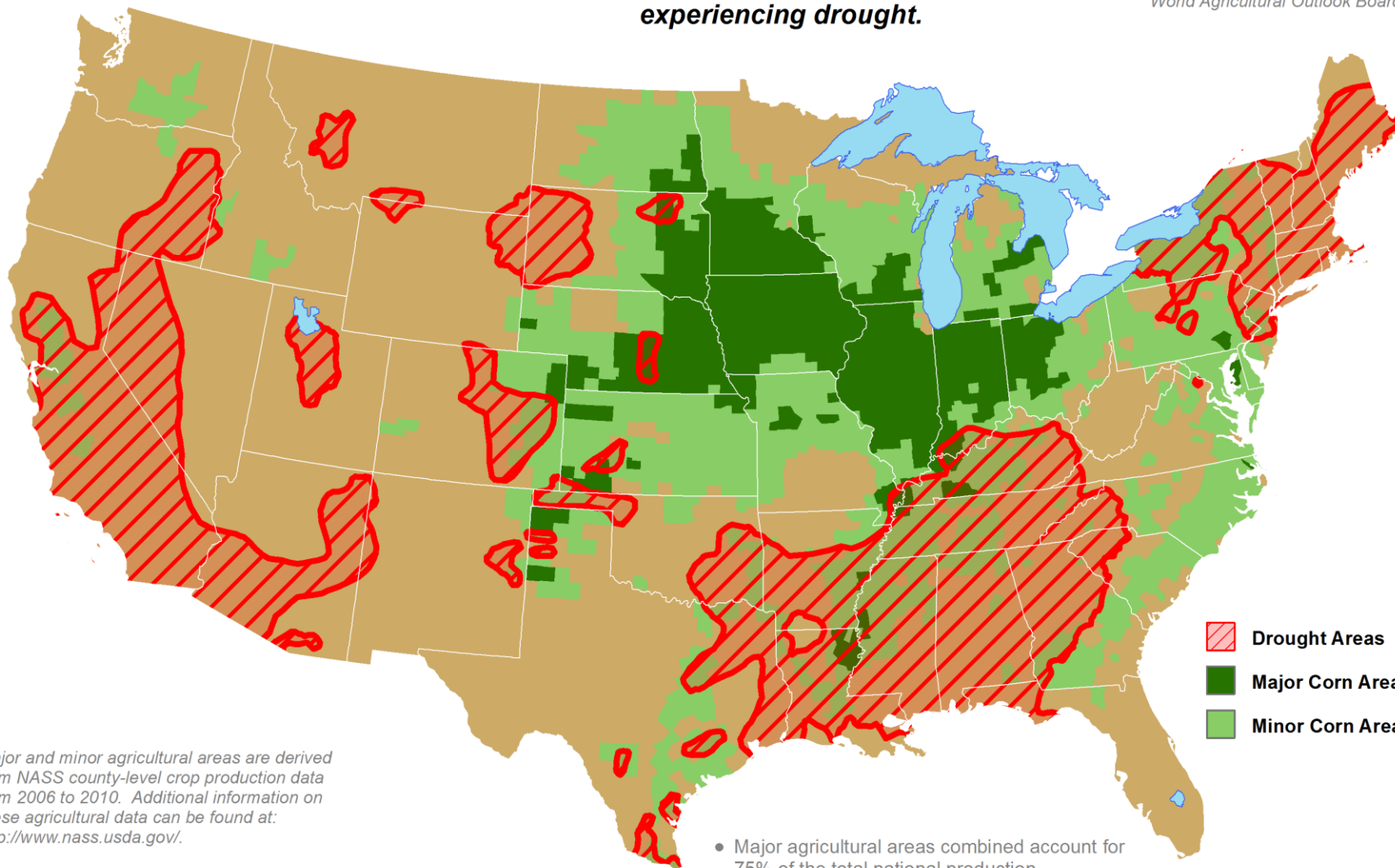
<http://droughtmonitor.unl.edu/>

U.S. Corn Areas Experiencing Drought

Reflects **November 1, 2016**
U.S. Drought Monitor data

Approximately **9%** of corn
production is within an area
experiencing drought.

This product was prepared by the
USDA Office of the Chief Economist
World Agricultural Outlook Board



-  Drought Areas
-  Major Corn Area
-  Minor Corn Area

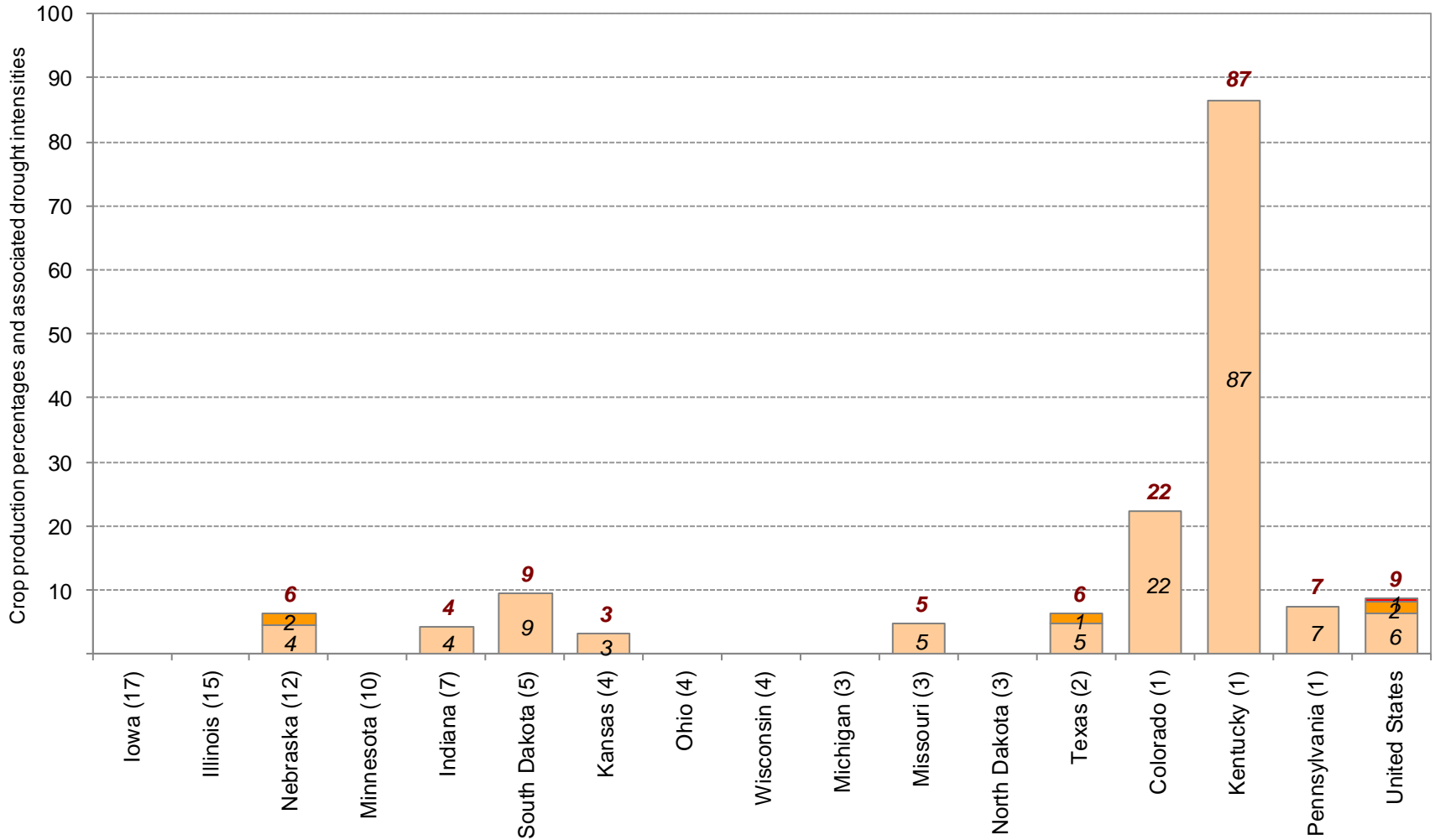
Major and minor agricultural areas are derived from NASS county-level crop production data from 2006 to 2010. Additional information on these agricultural data can be found at: <http://www.nass.usda.gov/>.

Mapped drought areas are derived from the U.S. Drought Monitor product and do not depict the intensity of drought in any particular location. More information on the Drought Monitor can be found at: <http://droughtmonitor.unl.edu/>.

- Major agricultural areas combined account for 75% of the total national production.
- Major and minor agricultural areas combined account for 99% of the total national production.

Approximate Percentage of Corn Located in Drought *

November 1, 2016

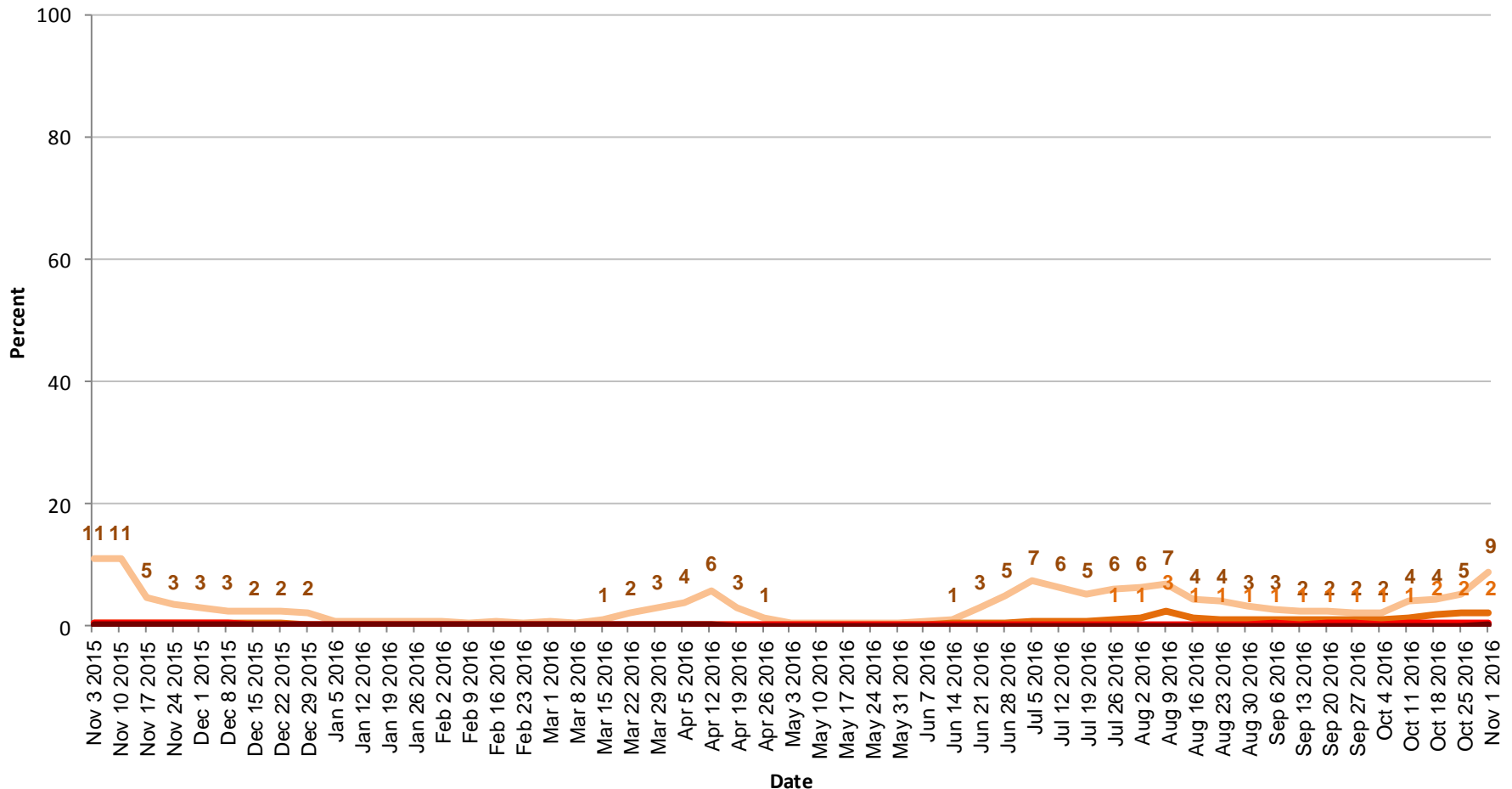


* Drought percentages were calculated from U.S. Drought Monitor (USDM) data for the above date. More information on the USDM is available at <http://droughtmonitor.unl.edu/>.

Percent in Moderate Drought (D1)	Percent in Severe Drought (D2)
Percent in Extreme Drought (D3)	Percent in Exceptional Drought (D4)

State contributions to national production (percentages in parentheses) are based upon National Agricultural Statistics Service (NASS) 5-year averages from 2006-2010. More information on NASS data can be found at <http://www.nass.usda.gov/>.

United States Corn Areas Located in Drought



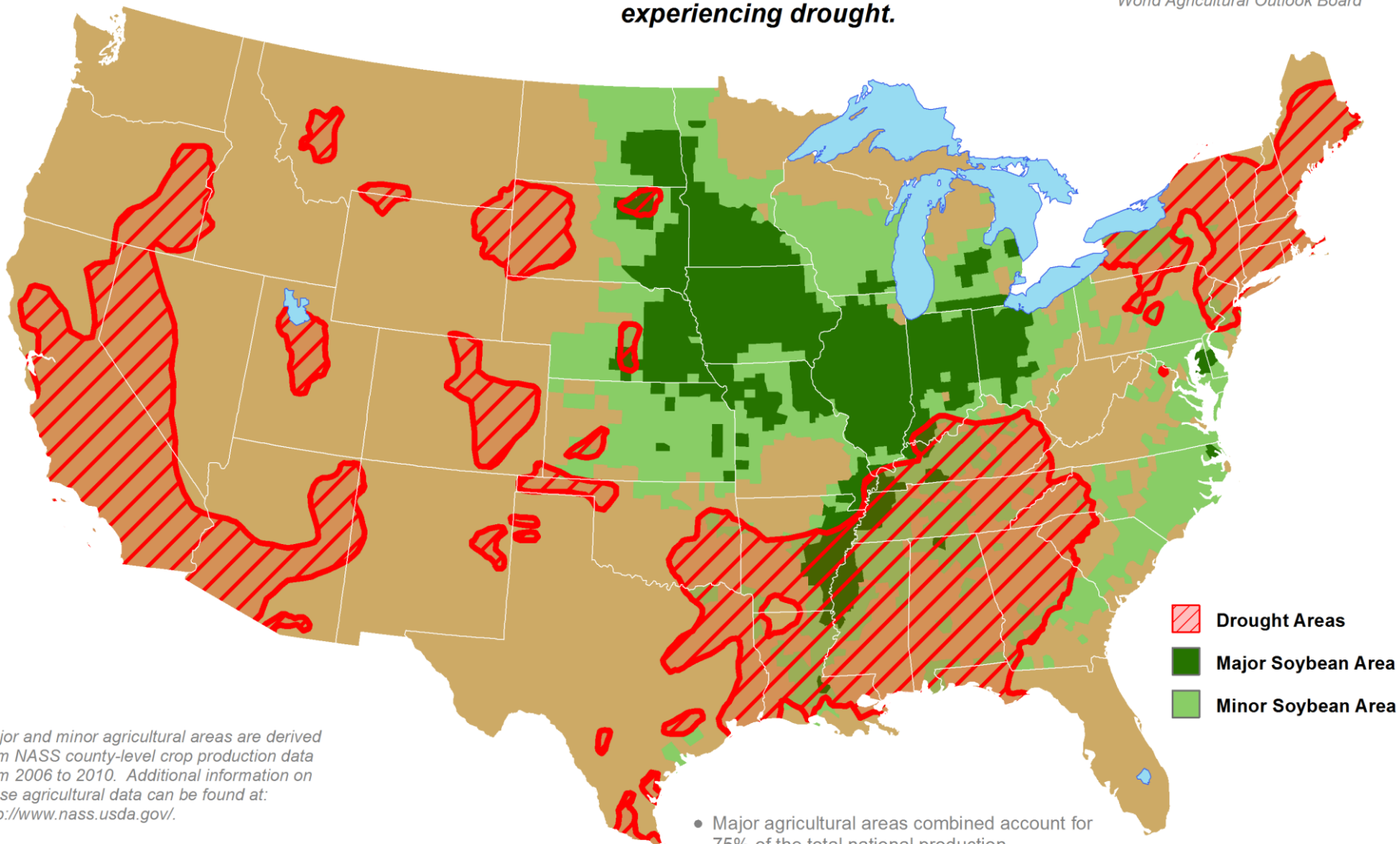
- Moderate or more intense drought (D1+)
- Severe or more intense drought (D2+)
- Extreme or more intense drought (D3+)
- Exceptional drought (D4)

U.S. Soybean Areas Experiencing Drought

Reflects **November 1, 2016**
U.S. Drought Monitor data

Approximately **15%** of soybean
production is within an area
experiencing drought.

This product was prepared by the
USDA Office of the Chief Economist
World Agricultural Outlook Board

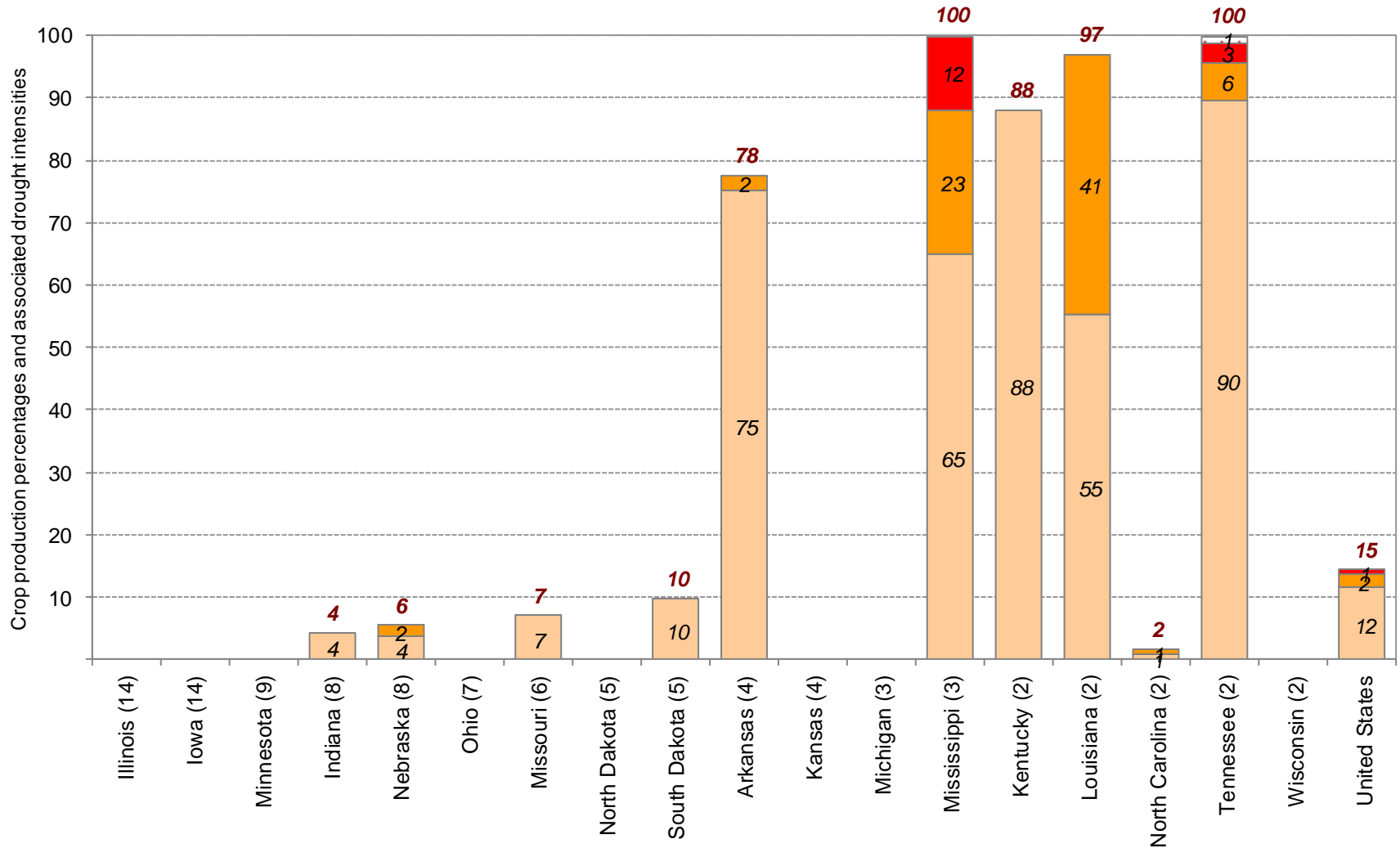


Major and minor agricultural areas are derived from NASS county-level crop production data from 2006 to 2010. Additional information on these agricultural data can be found at: <http://www.nass.usda.gov/>.

Mapped drought areas are derived from the U.S. Drought Monitor product and do not depict the intensity of drought in any particular location. More information on the Drought Monitor can be found at: <http://droughtmonitor.unl.edu/>.

- Major agricultural areas combined account for 75% of the total national production.
- Major and minor agricultural areas combined account for 99% of the total national production.

Approximate Percentage of Soybeans Located in Drought * November 1, 2016

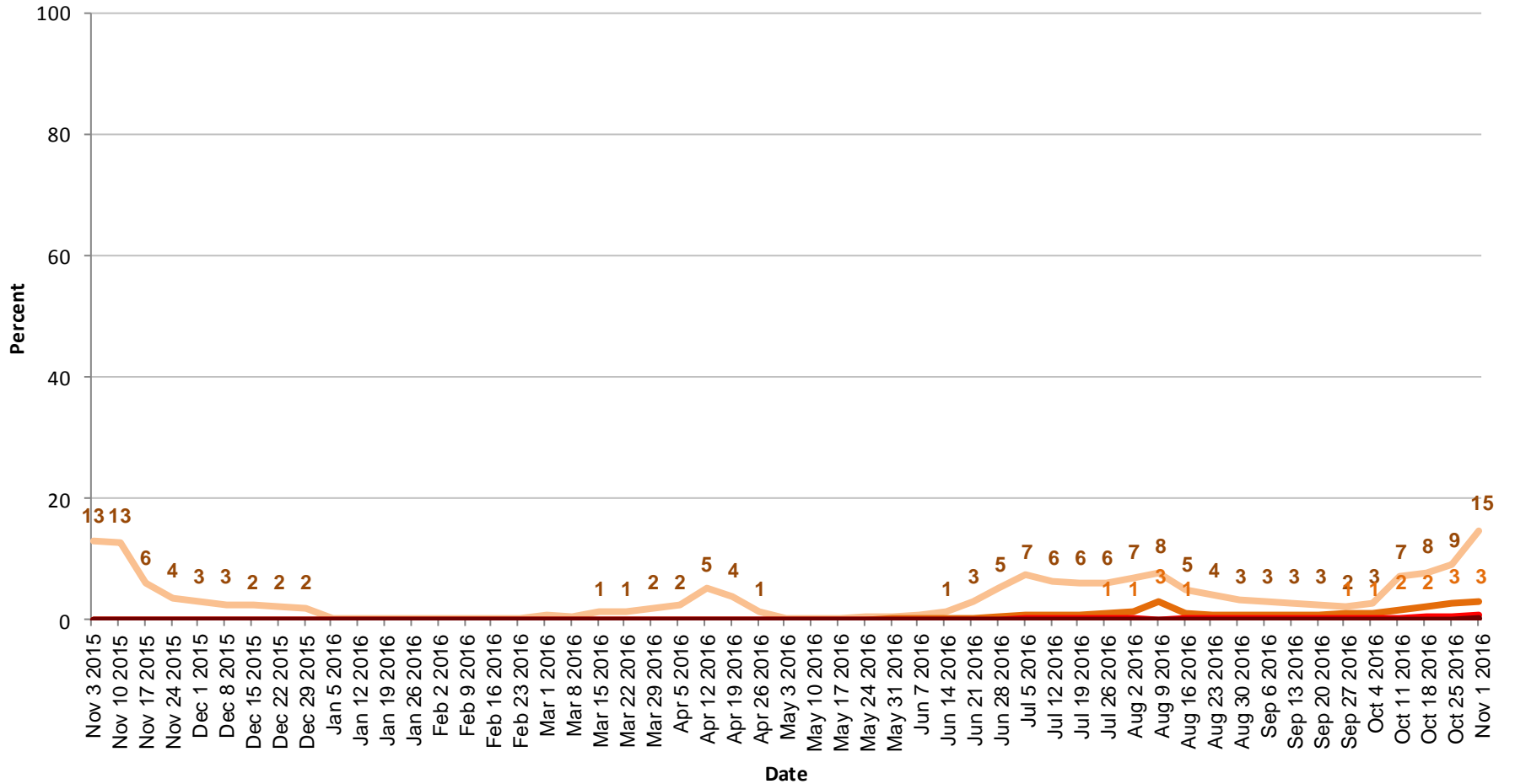


* Drought percentages were calculated from U.S. Drought Monitor (USDM) data for the above date. More information on the USDM is available at <http://droughtmonitor.unl.edu/>.



State contributions to national production (percentages in parentheses) are based upon National Agricultural Statistics Service (NASS) 5-year averages from 2006-2010. More information on NASS data can be found at <http://www.nass.usda.gov/>.

United States Soybean Areas Located in Drought

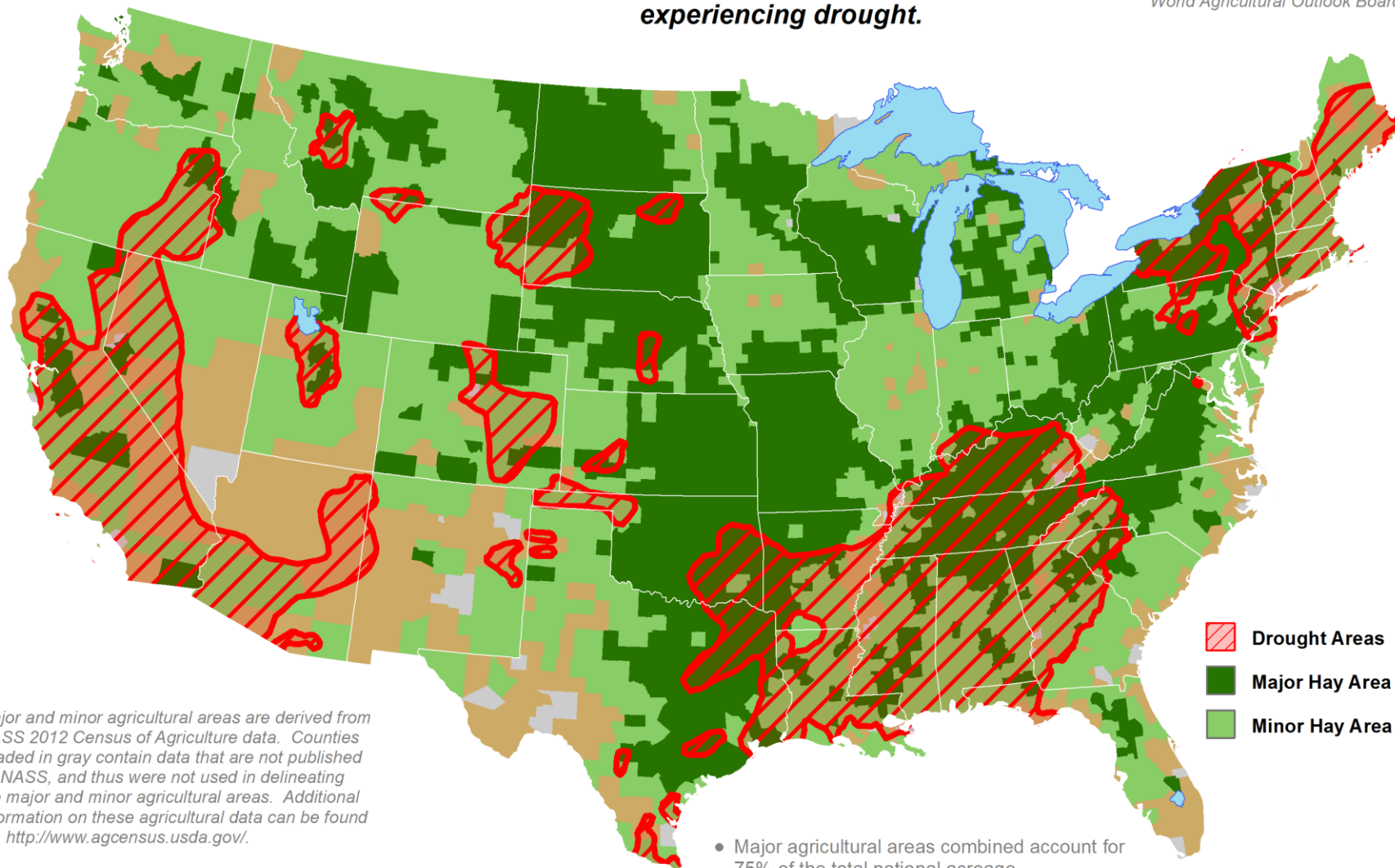


U.S. Hay Areas Experiencing Drought

Reflects **November 1, 2016**
U.S. Drought Monitor data

Approximately **27%** of hay
acreage is within an area
experiencing drought.

This product was prepared by the
USDA Office of the Chief Economist
World Agricultural Outlook Board



Major and minor agricultural areas are derived from NASS 2012 Census of Agriculture data. Counties shaded in gray contain data that are not published by NASS, and thus were not used in delineating the major and minor agricultural areas. Additional information on these agricultural data can be found at: <http://www.agcensus.usda.gov/>.

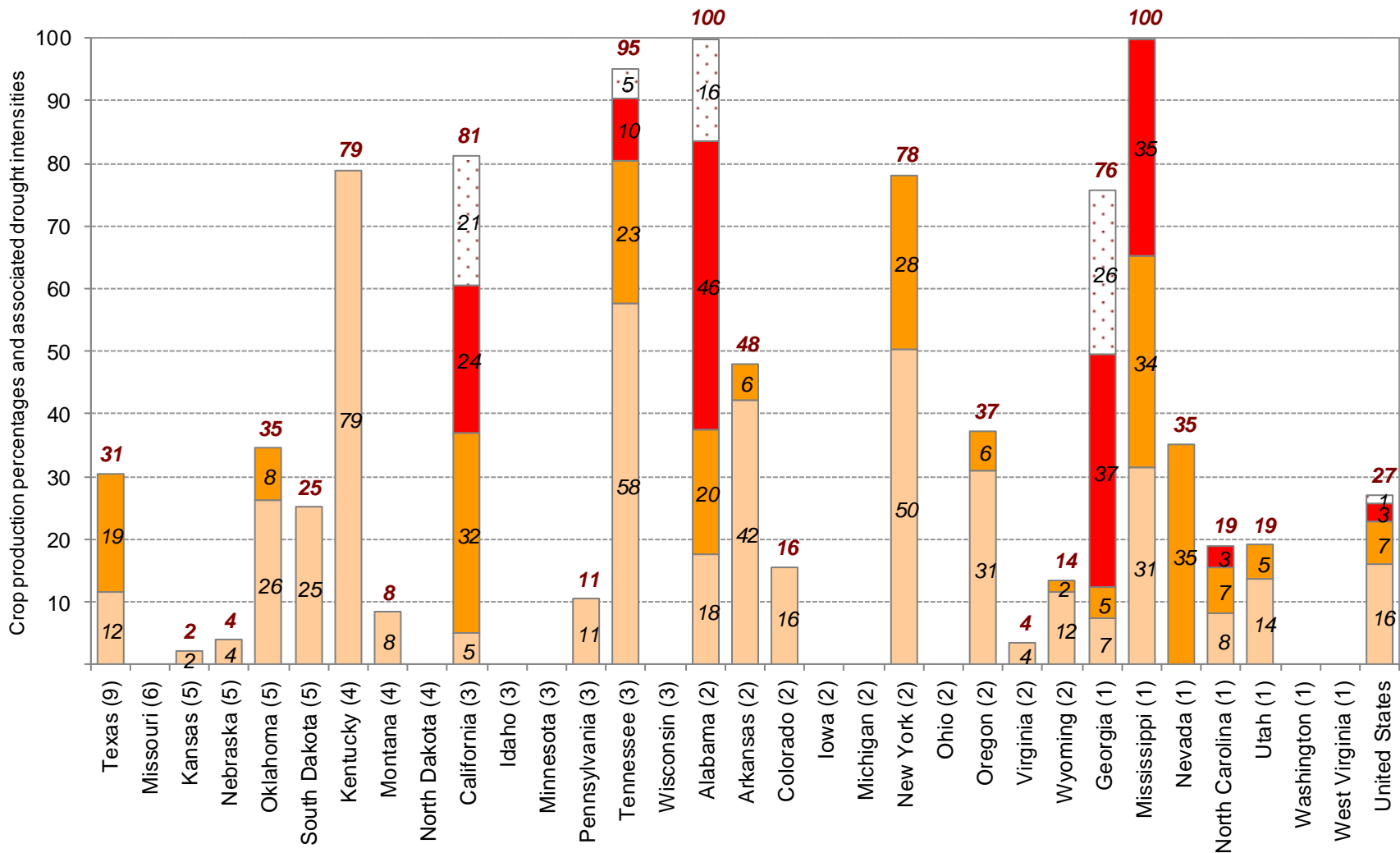
Mapped drought areas are derived from the U.S. Drought Monitor product and do not depict the intensity of drought in any particular location. More information on the Drought Monitor can be found at: <http://droughtmonitor.unl.edu/>.

-  Drought Areas
-  Major Hay Area
-  Minor Hay Area

- Major agricultural areas combined account for 75% of the total national acreage.
- Major and minor agricultural areas combined account for 99% of the total national acreage.

Approximate Percentage of Hay Located in Drought *

November 1, 2016

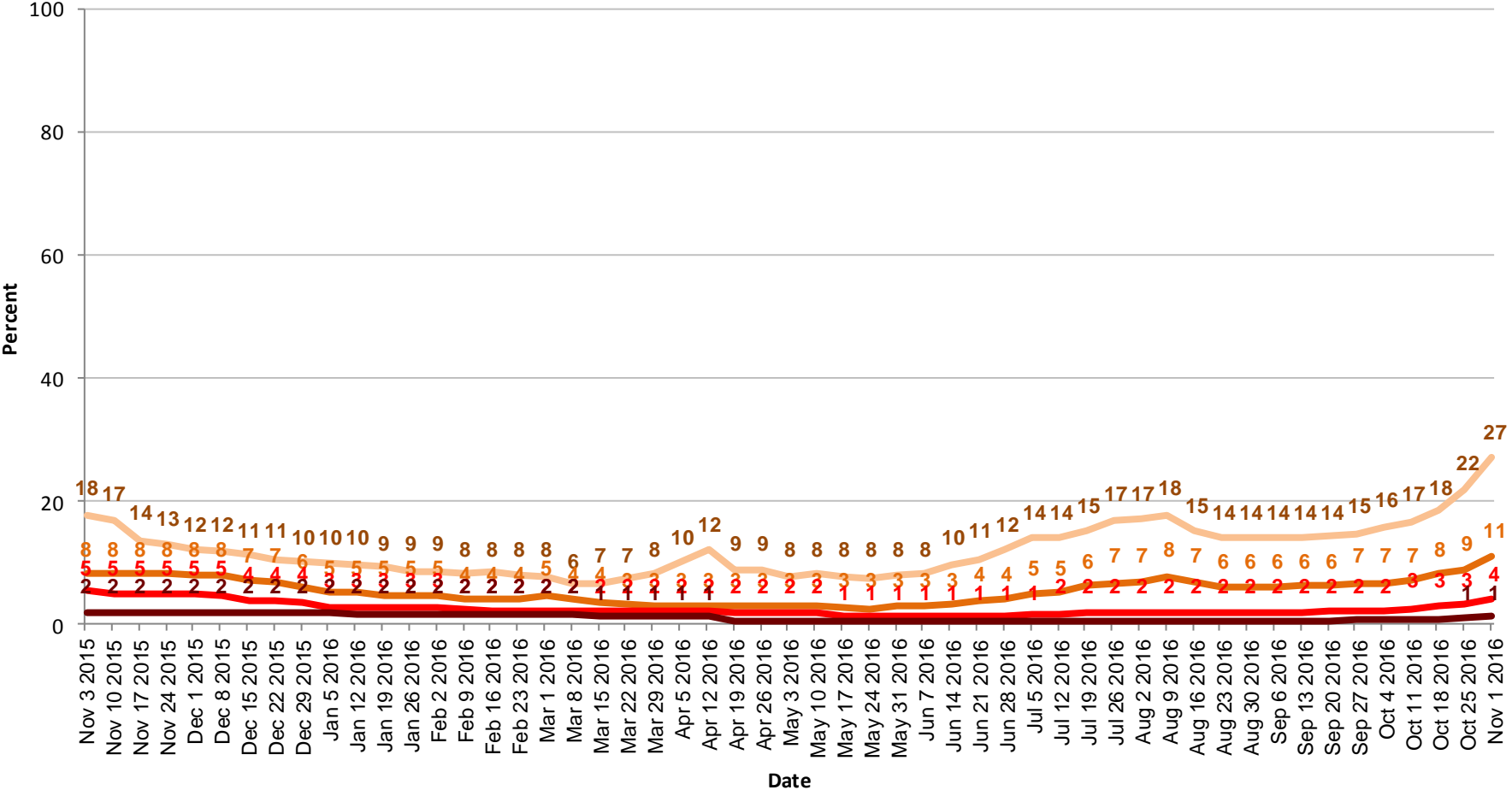


* Drought percentages were calculated from U.S. Drought Monitor (USDM) data for the above date. More information on the USDM is available at <http://droughtmonitor.unl.edu/>.

Percent in Moderate Drought (D1)	Percent in Severe Drought (D2)
Percent in Extreme Drought (D3)	Percent in Exceptional Drought (D4)

State contributions to national production (percentages in parentheses) are based upon National Agricultural Statistics Service (NASS) 2012 Census of Agriculture data. More information on NASS data can be found at <http://www.nass.usda.gov/>.

United States Hay Areas Located in Drought



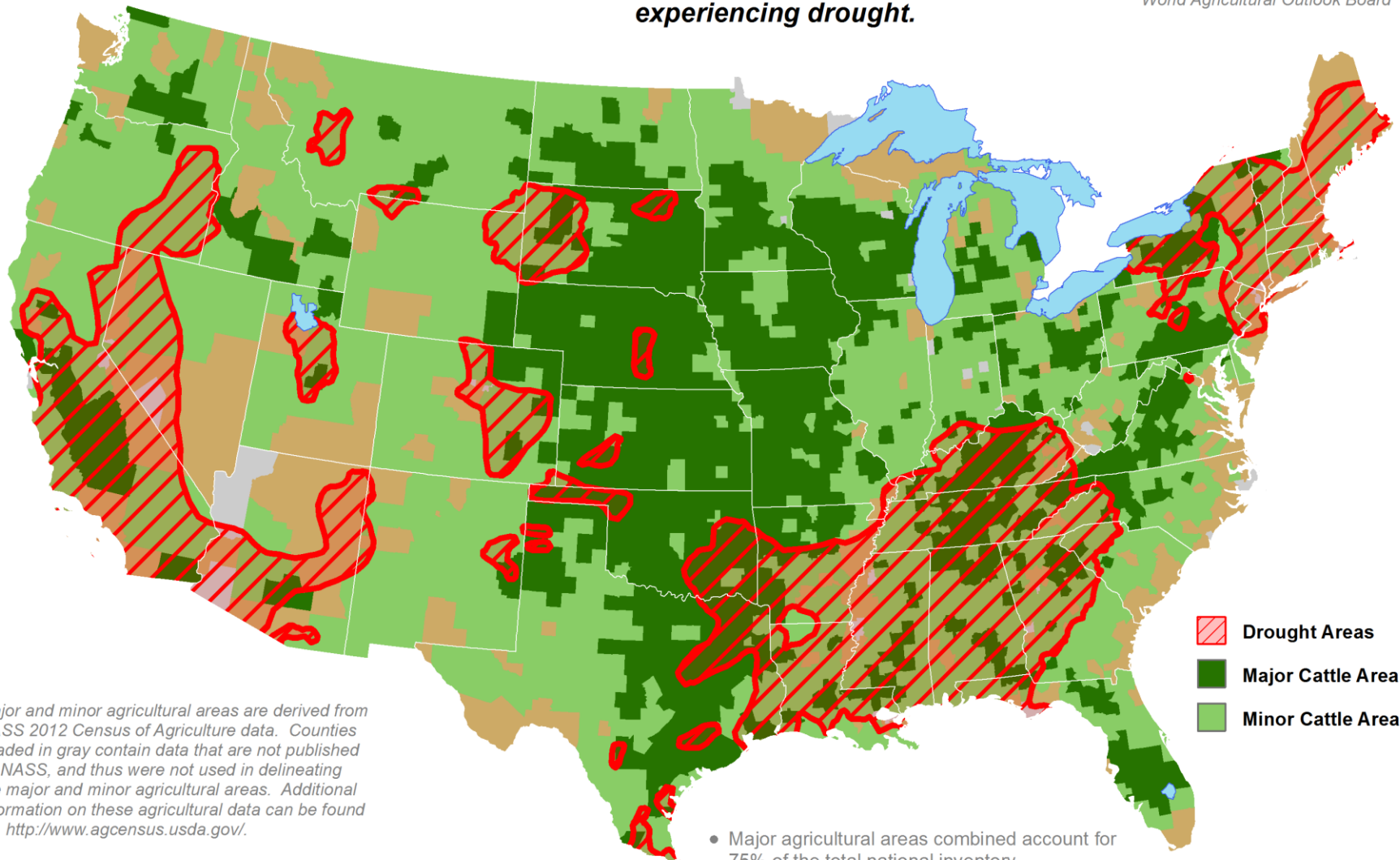
- Moderate or more intense drought (D1+)
- Severe or more intense drought (D2+)
- Extreme or more intense drought (D3+)
- Exceptional drought (D4)

U.S. Cattle Areas Experiencing Drought

Reflects **November 1, 2016**
U.S. Drought Monitor data

Approximately **25%** of cattle
inventory is within an area
experiencing drought.

This product was prepared by the
USDA Office of the Chief Economist
World Agricultural Outlook Board



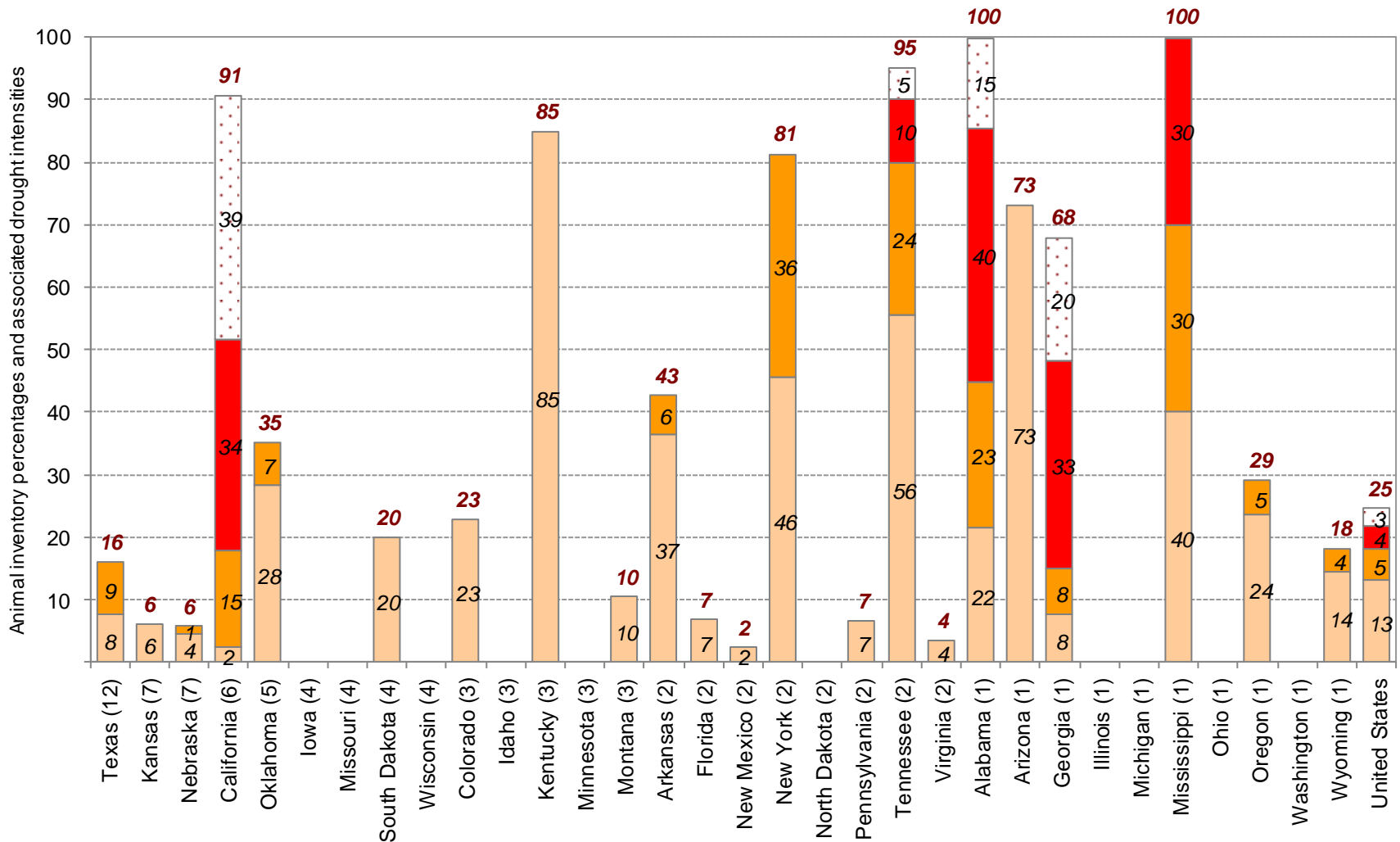
Major and minor agricultural areas are derived from NASS 2012 Census of Agriculture data. Counties shaded in gray contain data that are not published by NASS, and thus were not used in delineating the major and minor agricultural areas. Additional information on these agricultural data can be found at: <http://www.agcensus.usda.gov/>.

Mapped drought areas are derived from the U.S. Drought Monitor product and do not depict the intensity of drought in any particular location. More information on the Drought Monitor can be found at: <http://droughtmonitor.unl.edu/>.

- Major agricultural areas combined account for 75% of the total national inventory.
- Major and minor agricultural areas combined account for 99% of the total national inventory.

Approximate Percentage of Cattle Located in Drought *

November 1, 2016

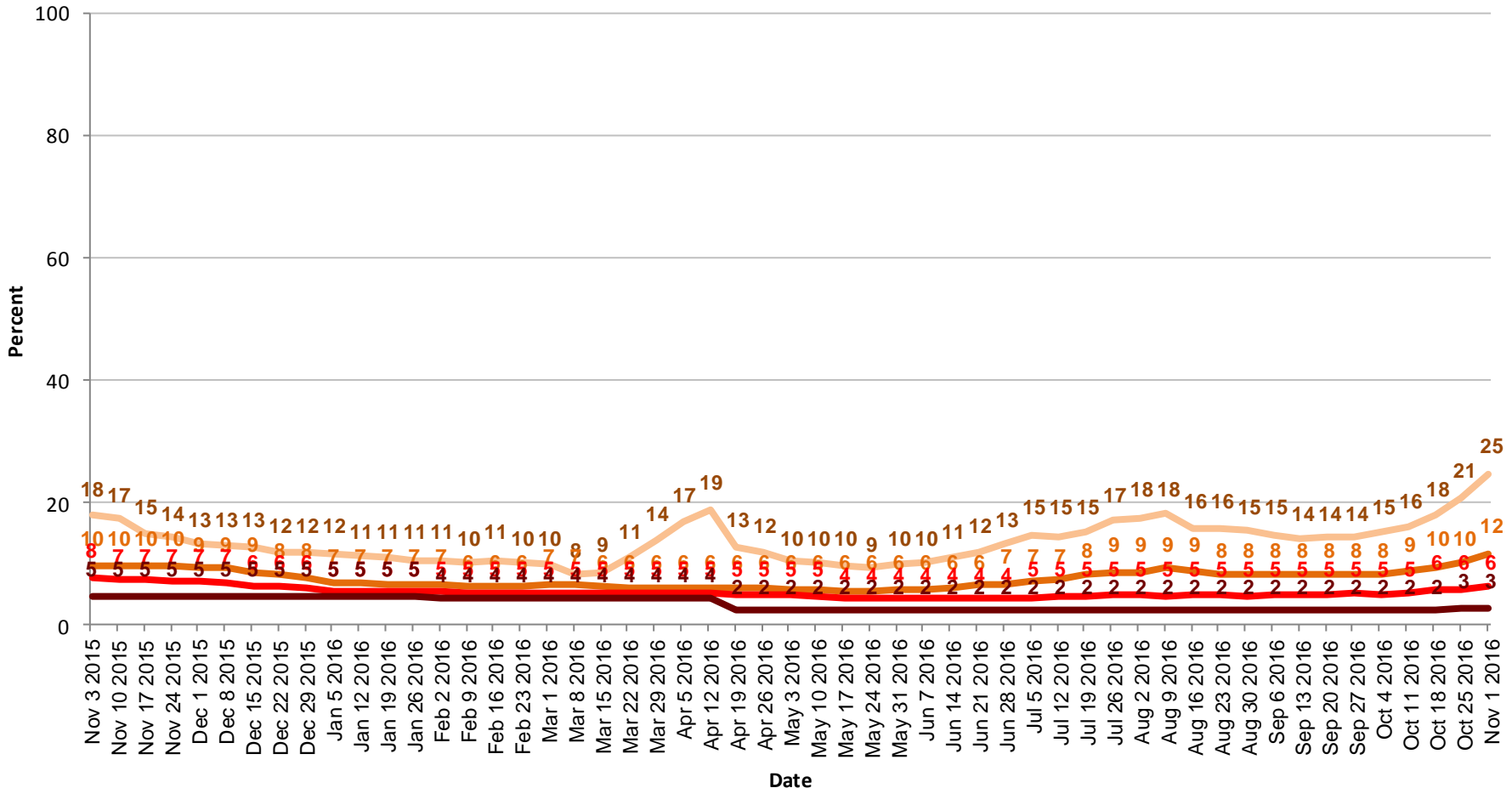


* Drought percentages were calculated from U.S. Drought Monitor (USDM) data for the above date. More information on the USDM is available at <http://droughtmonitor.unl.edu/>.



State contributions to the total national inventory (percentages in parentheses) are based upon National Agricultural Statistics Service (NASS) 2012 Census of Agriculture data. More information on NASS data can be found at <http://www.nass.usda.gov/>.

United States Cattle Areas Located in Drought



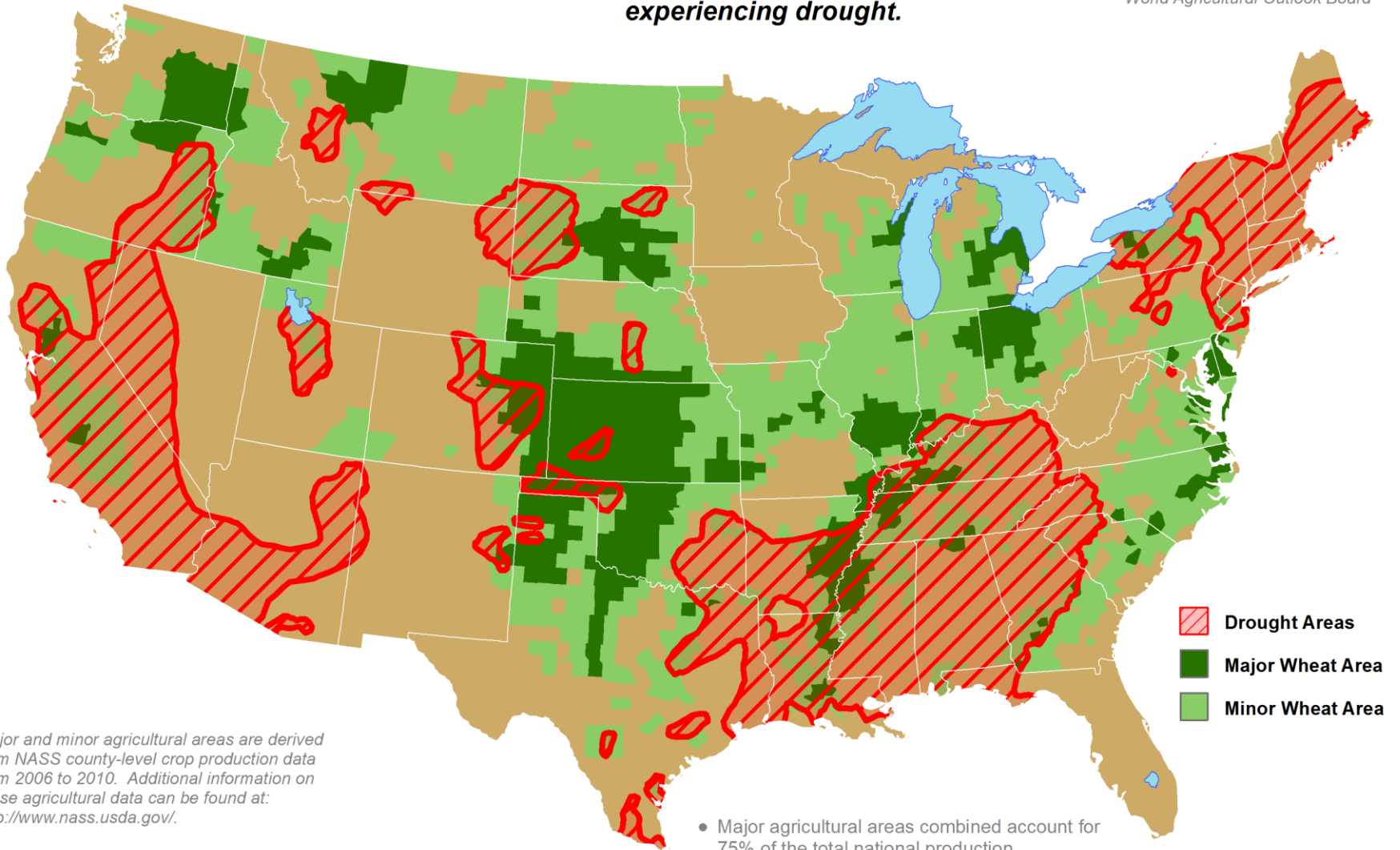
- Moderate or more intense drought (D1+)
- Severe or more intense drought (D2+)
- Extreme or more intense drought (D3+)
- Exceptional drought (D4)

U.S. Winter Wheat Areas Experiencing Drought

Reflects **November 1, 2016**
U.S. Drought Monitor data

Approximately **15%** of winter wheat
production is within an area
experiencing drought.

This product was prepared by the
USDA Office of the Chief Economist
World Agricultural Outlook Board



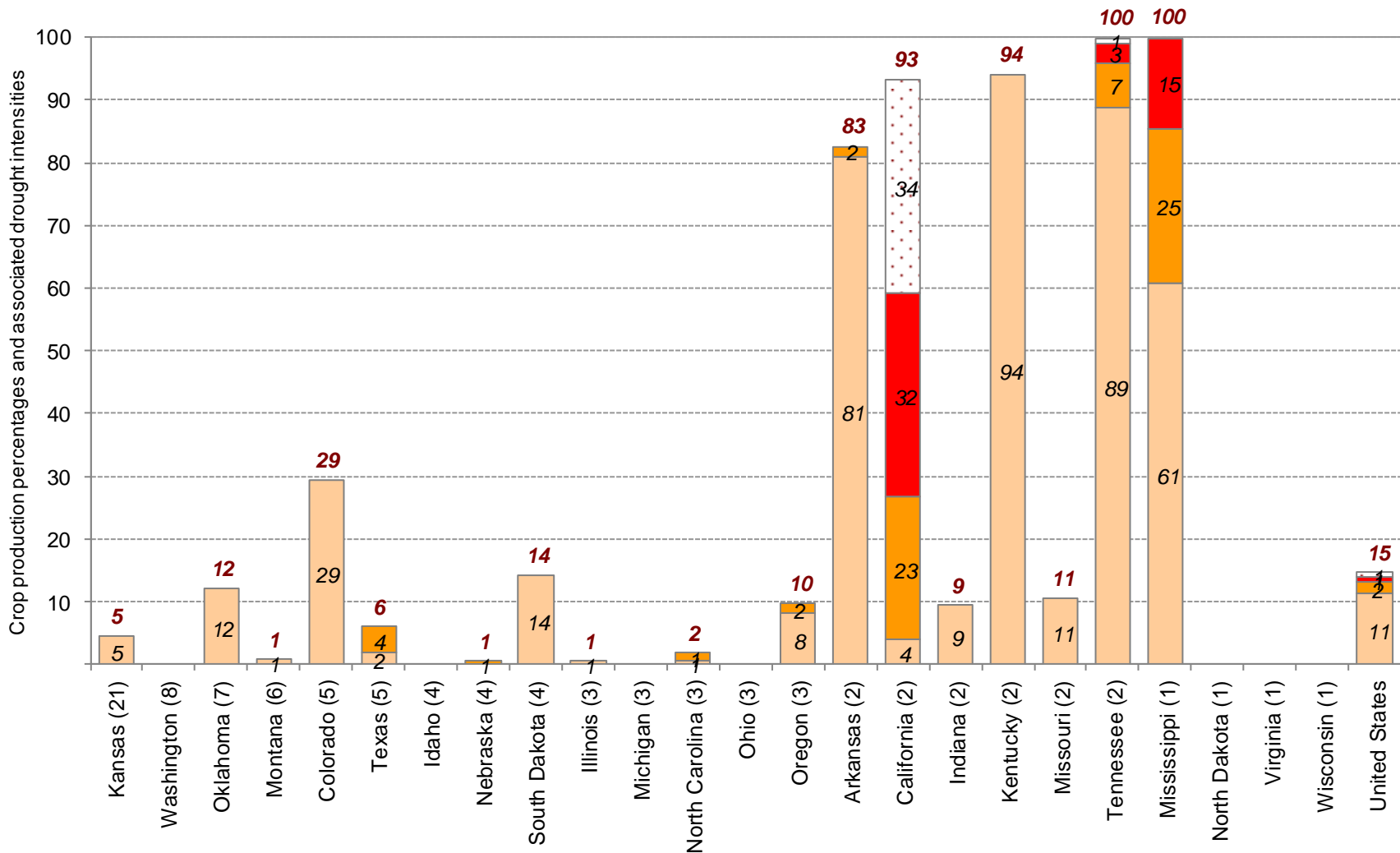
Major and minor agricultural areas are derived from NASS county-level crop production data from 2006 to 2010. Additional information on these agricultural data can be found at: <http://www.nass.usda.gov/>.

Mapped drought areas are derived from the U.S. Drought Monitor product and do not depict the intensity of drought in any particular location. More information on the Drought Monitor can be found at: <http://droughtmonitor.unl.edu/>.

- Major agricultural areas combined account for 75% of the total national production.
- Major and minor agricultural areas combined account for 99% of the total national production.

Approximate Percentage of Winter Wheat Located in Drought *

November 1, 2016



* Drought percentages were calculated from U.S. Drought Monitor (USDM) data for the above date. More information on the USDM is available at <http://droughtmonitor.unl.edu/>.

Percent in Moderate Drought (D1)	Percent in Severe Drought (D2)
Percent in Extreme Drought (D3)	Percent in Exceptional Drought (D4)

State contributions to national production (percentages in parentheses) are based upon National Agricultural Statistics Service (NASS) 5-year averages from 2006-2010. More information on NASS data can be found at <http://www.nass.usda.gov/>.

United States Winter Wheat Areas Located in Drought

