

# SR 57 vs the White River

## June 2008

Mark Bailey, PE – Hydraulic Manager, INDOT  
Dale R. Sedler, PE – Sr. Hydraulic Engineer, INDOT

Road School 2016



# SR-57 vs White River, June 2008

- **1. In June 2008 Indiana experienced numerous events of extraordinary rainfall.**
- **2. There was high water & damage in numerous areas of the White River watershed, including Edinburgh, Columbus, Franklin, and Martinsville.**
- **3. USGS estimated Young's Creek flow in Franklin at a 0.2 % AEP (500 year flow).**



# SR-57 vs White River, June 2008

- **1. On the White River at Newberry, the gage indicated 1% AEP depth, though it was partially due to a farmer's illegal levee.**
- **2. Historical river profiles indicate that the White River would leave its watershed upstream of Newberry at ~2% AEP depth, which would send flow to a 20' x 8' 3-sided box under SR-57 north of Newberry.**

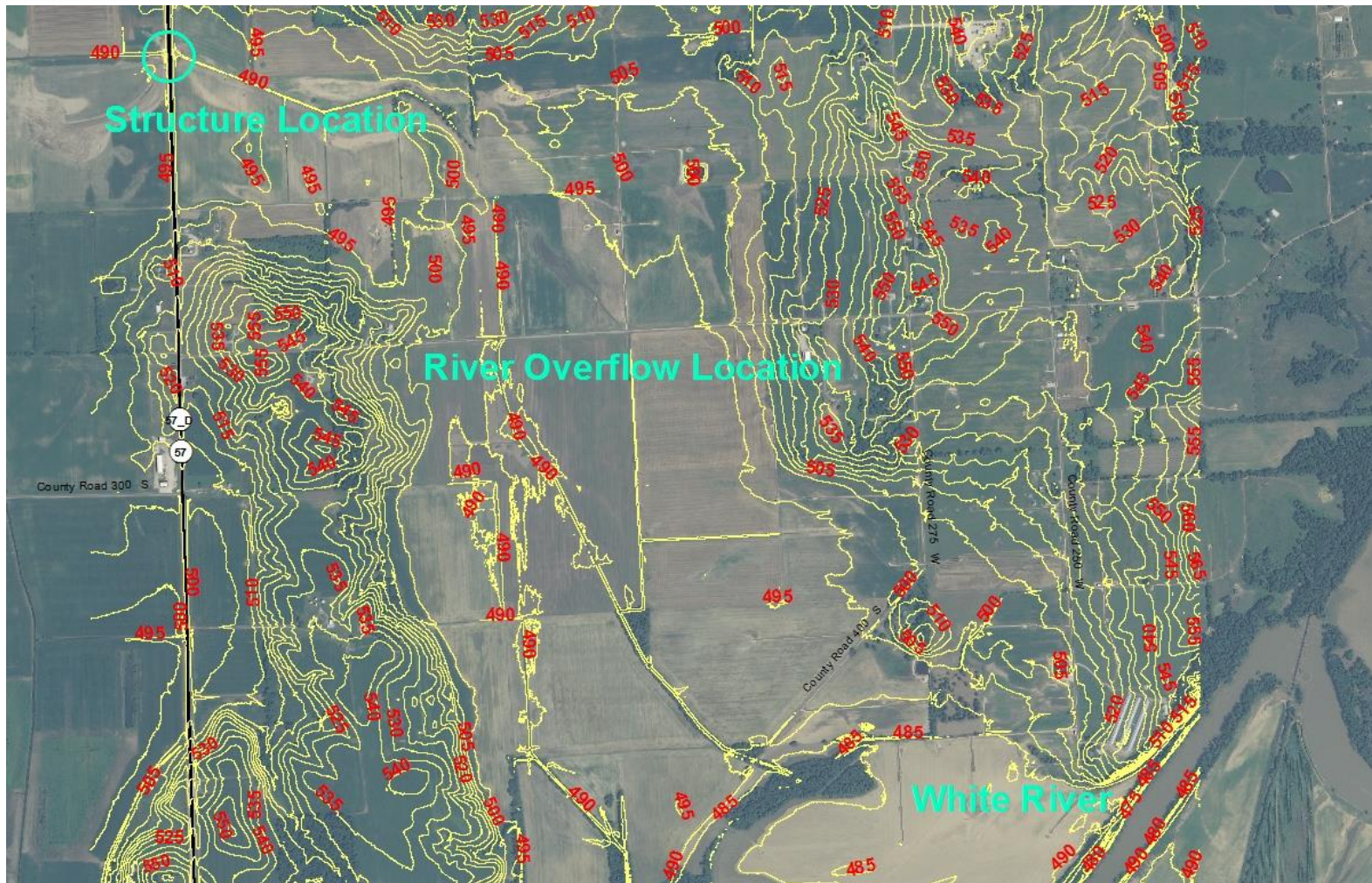


# SR-57 vs White River, June 2008

- **1. 20' x 8' 3-sided box was designed for a watershed of ~ 238 ac.**
- **2. Per 1930s survey, SR-57 had a dip in the road which may have been designed due to the 1913 floods. The road would go before the structure.**
- **It was removed some time later, maybe due to institutional amnesia.**

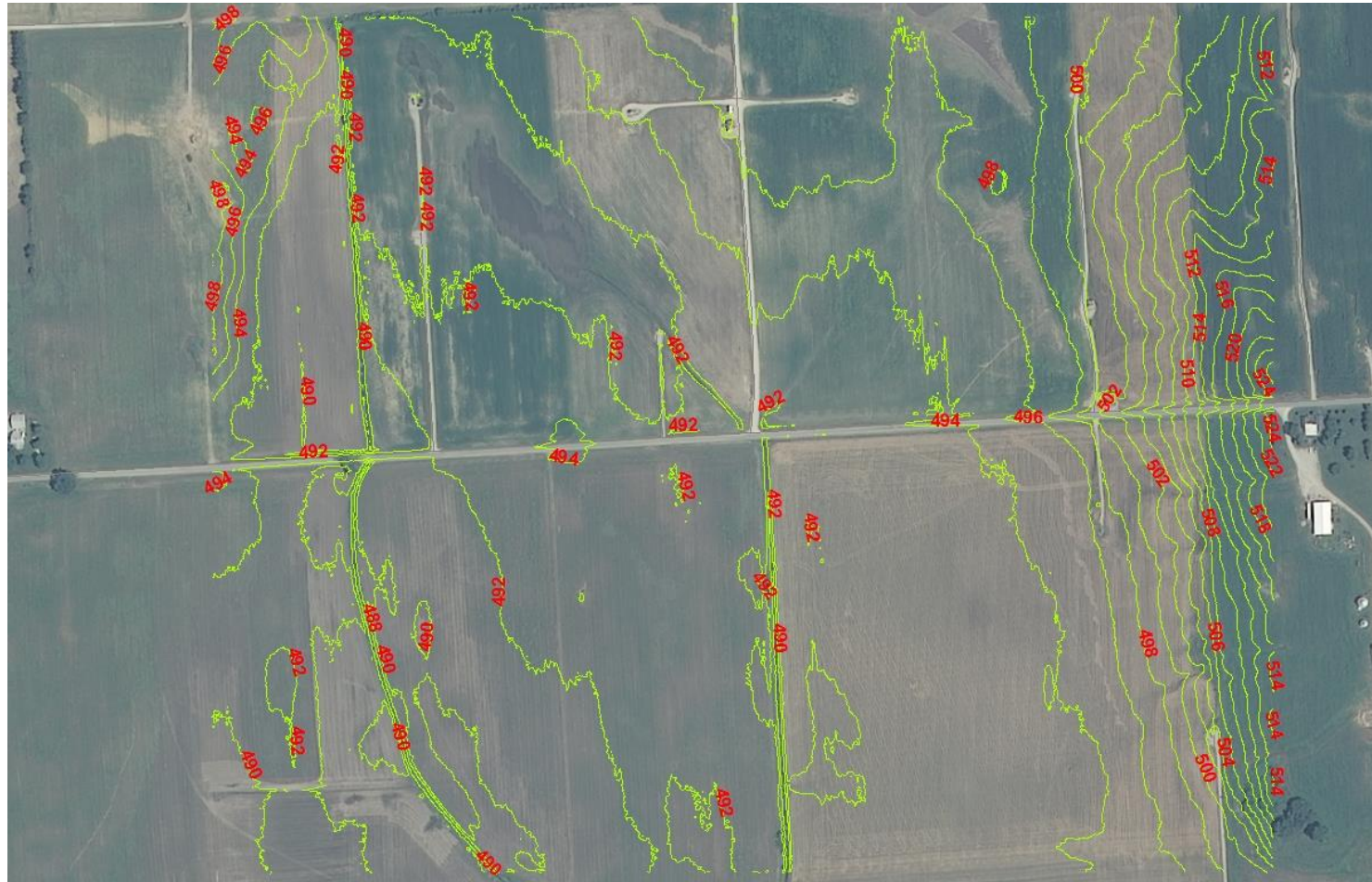


# SR-57 vs White River, June 2008



**2008 NAIP Aerial Photo w/5 ft contour overlay**

# SR-57 vs White River, June 2008



**2008 NAIP Aerial Photo w/2 ft contour overlay**

# SR-57 vs White River, June 2008



**2005 NAIP Aerial Photo of site**

# SR-57 vs White River, June 2008



**2008 NAIP Aerial Photo of site**



# SR-57 vs White River, June 2008



**2008 site photo, overflow upper right**

# SR-57 vs White River, June 2008



**2008 site photo, contraction scour**

# SR-57 vs White River, June 2008



**2008 site photo, structure damage**

# SR-57 vs White River, June 2008



**2008 site photo, structure damage**

# SR-57 vs White River, June 2008



**2008 site photo, structure damage & scour**

# SR-57 vs White River, June 2008



**2008 site photo, structure damage & scour**

# SR-57 vs White River, June 2008



**2008 site photo, structure damage & scour**

# SR-57 vs White River, June 2008



**2008 site photo, structure damage & scour**



# SR-57 vs White River, June 2008



**2008 NAIP Aerial Photo of site**

# SR-57 vs White River, June 2008



**2008 site photo, structure damage & scour**

# SR-57 vs White River, June 2008



**2008 site photo, structure & road damage**

# SR-57 vs White River, June 2008



**2008 site photo, view from downstream**

# SR-57 vs White River, June 2008



**2008 site photo, outlet and scour hole**

# SR-57 vs White River, June 2008



**2008 site photo, outlet and scour hole**

# SR-57 vs White River, June 2008



**2008 site photo, downstream channel**

# SR-57 vs White River, June 2008



**2008 NAIP, flow pattern-embankment reclamation**



# SR-57 vs White River, June 2008



**2005 NAIP Aerial Prior Scour Issue**

# SR-57 vs White River, June 2008



**2011/2013 Indiana Map Aerial**



# SR-57 vs White River, June 2008



**2011/2013 Indiana Map Aerial – no scour visible  
Per aerial measurement, 26 ft. span.**



# SR-57 vs White River, June 2008



**The End**

**Any Questions?**