

# **STANDARD DOCUMENTS**

## **Standard Documents AGENDA**

- 1. Documents Which Are Considered Standard**
- 2. Proposing Changes, Additions, or Deletions**
- 3. Where Current Versions Are Available**
- 4. Changes in 2002 and 2003**
- 5. Forthcoming Standards Changes**
- 6. Where Changes Are Identified**
- 7. Special Provisions**
- 8. Pay Items**

## **1. DOCUMENTS WHICH ARE CONSIDERED STANDARD**

### **Documents Which Are Standard**

- 1. Standard Specifications**
- 2. Standard Drawings**
- 3. Design Policy**

### **Standard Specifications**

- Contract requirements which are best expressed in words or text, that can be applicable to all work.**

### **Standard Specifications**

- The 5 ways to specify are as follows:**
  - 1. Description of the Work**
  - 2. Material Requirements**
  - 3. Construction Requirements**
  - 4. Measurement for Payment**
  - 5. Basis of Payment**
- This is a chronological occurrence of the work.**
- Every specification must address all of these.**

## Standard Specifications

- **Arrangement – Essentially “project chronological” as follows:**

Section 100: General Provisions  
 Section 200: Earthwork  
 Section 300: Bases  
 Section 400: Asphalt Pavements  
 Section 500: Concrete Pavements  
 Section 600: Incidental Construction  
 Section 700: Structures  
 Section 800: Traffic Control Devices and Lighting  
 Section 900: Materials Details

## Standard Drawings

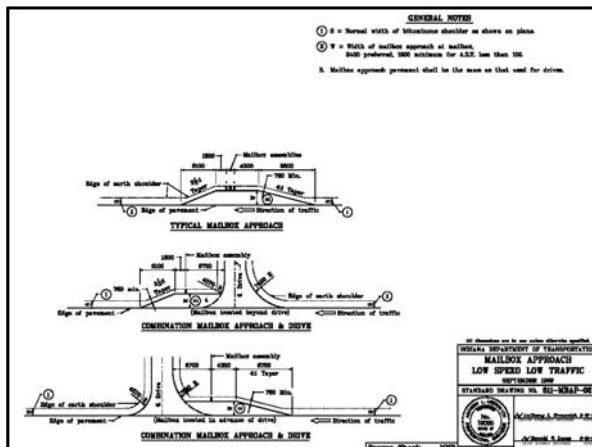
- **Pre-developed details which may apply to more than one project, and therefore need not be detailed in the plans**

## Standard Drawings

- **Identified and arranged in same manner and order as Standard Specifications.**
- **Each drawing number consists of Std. Spec. reference number, 4-letter code pertaining to its details, and serial drawing number for the code.**

## Standard Drawings

- **Standard Drawing number example:**  
611-MBAP-02  
 611 is Std. Spec. section number for Mailboxes.  
 MBAP means MailBox Approach.  
 02 is the second 611-MBAP drawing.



## Design Policy

- **Written instructions, guidelines, or requirements for designing a project**

## *Design Policy*

- *The Indiana Design Manual has been developed into 9 Parts as follows:*

*I: Project Development [Gray Binder]  
II: Plan Development [Beige Binder]  
III: Location Surveys [Maroon Binder]  
IV: Hydrology / Hydraulics [Two Light Blue Binders]  
V: Road Design [Two Red Binders]  
VI: Structural Design [Two Dark Blue Binders; still in development]  
VII: Traffic Design [Green Binder]  
VIII: Maintaining Traffic [in Green Binder with Part VII ]  
IX: Right-Of-Way [in Green Binder with Parts VII and VIII ]*

## *Design Manual*

- *The 9 Parts are divided into Chapters as follows:*

*I: Project Development, 13 Chapters: 1 through 13  
II: Plan Development, 8 Chapters: 14 through 22  
III: Location Surveys, 6 Chapters: 23 through 27  
IV: Hydrology / Hydraulics, 12 Chapters: 28 through 39  
V: Road Design, 18 Chapters: 40 through 57  
VI: Structural Design, 17 Chapters: 58 through 74  
VII: Traffic Design, 6 Chapters: 75 through 80  
VIII: Maintaining Traffic, 4 Chapters: 81 through 84  
IX: Right-Of-Way, 3 Chapters: 85 through 87*

## *Design Manual*

- *The Indiana Design Manual Parts and Chapters are not referenced or tied into the Standard Specifications and Standard Drawings numbering system.*
- *However, the Manual Parts and Chapters are arranged in an approximately chronological order in which a project is designed.*

## *2. PROPOSING CHANGES, ADDITONS, OR DELETIONS TO STANDARD DOCUMENTS*

## *Proposing Addition*

- *Develop electronic draft Standard Specifications, Standard Drawings, and design policy.*
- *May assign section numbers to draft specifications.*
- *Do not assign numbers to drawings.*
- *Do not assign Design Manual chapter or section numbers to draft design policy.*

## *Proposing Change*

- *Mark up hardcopies of existing Standard Specifications, English-measure Standard Drawings, and Design Manual.*
- *Make marks legibly in black.*
- *A change may include additional, new material. Extensive new material may be developed electronically, compatible with Department-used software.*

## Proposing Deletion

- Identify which portions of Standard Specifications, Standard Drawings, or the Design Manual should be deleted.
- Hardcopies may be marked up, X'd out, etc.
- Deletion may be proposed with change or addition

## Standards Committee

The Standards Committee is the only Department entity authorized to approve all changes, additions, and deletions to Standard Specifications, Standard Drawings, and design policy.

## Standards Committee

### Representation:

- Chair: Chief Highway Engineer
- Voting Membership:
  - Contracts and Construction Division's Standards Section Manager
  - Contracts and Construction Division Chief
  - Design Division representative
  - District Construction representative
  - Materials and Tests Division Chief
  - Operations Support Division Chief
- Nonvoting Membership:
  - Secretary (Cont. & Constr. Division's Specifications Engineer)
  - Federal Highway Administration representative

## Standards Alteration Procedure

### Committee Member:

- C. & C. Div. Chief

### Accepts Alterations From:

- C. & C. Field Engineers and Contracts Sections
- C. & C. Div. Standards Mgr.
- Legal, Multimodal, Program Development divisions; C. & C. Div.'s Standards Section
- Design, Enviro. Planning & Engrg., Land Acquis. divisions; district development, consultants
- Design Div. Representative

## Standards Alteration Procedure

### Committee Member:

- District Construction representative
- Matls. & Tests Division Chief
- Operations Support Division Chief

### Accepts Alterations From:

- District Construction; contracting industry
- Materials and Tests, Research divisions
- Operations Support Div.

## Standards Committee

- Proposals to alter standard documents are submitted by the Committee members to the secretary.
- He or she compiles them into a Committee meeting agenda.
- The agenda is electronically developed about 3 weeks before its meeting.
- It is then posted on the Department's website at [www.in.gov/dot/div/contracts/standards/sc/](http://www.in.gov/dot/div/contracts/standards/sc/)

### *Standards Committee*

- *Hardcopies are distributed to the Committee members.*
- *The Committee meets on set dates, about monthly, and considers each agenda item.*
- *The Committee discusses each item, and may propose further changes to it.*

### *Standards Committee*

- *After discussion, the Committee may deem an item unworthy of a vote in that meeting, and table it for a later meeting, after it is further revised per Committee discussion by its proposer.*
- *After discussion, the Committee will vote to pass an item as proposed, or per discussion in the meeting, or to fail it, either vote by majority rule.*

### *Standards Committee*

- *For each passed item, the Federal Highway Administration representative must concur in the passage so that the alteration may be applied to the National Highway System.*
- *For each passed item, the Committee will then determine the contract letting date of its first effectiveness.*

### *Standards Committee*

- *The Committee secretary develops a set of minutes for each meeting, showing the changes made to each item during the meeting, and the Committee's action regarding each item.*

### **3. WHERE CURRENT VERSIONS OF STANDARD DOCUMENTS ARE AVAILABLE**

#### *Standard Documents Availability*

##### *Department INTERNet Websites*

- *Standard Specifications:*  
[www.in.gov/dot/div/contracts/standards/book/index.html](http://www.in.gov/dot/div/contracts/standards/book/index.html)  
*Click on desired range of effective dates.  
Incorporates Supplemental Specifications.*

**INDIANA DEPARTMENT OF TRANSPORTATION**  
 "Proudly Moving Indiana Into the 21st Century"

[About INDOT](#) | [Contact Us](#) | [Links](#) | [News Releases](#) | [What's New](#) | [Site Map](#)

**Publications**

**Motorist Information** Welcome to the Indiana Department of Transportation's Website!

**Modes of Transportation**

**Doing Business with INDOT** Our Mission is to provide our customers the best transportation system that enhances mobility, stimulates economic growth, and integrates safety, efficiency and environmental sensitivity.

**Projects/Doing Business with INDOT** This website is a valuable tool in fulfilling that mission, as it is a forum for providing easy access to all sorts of detailed information for both our partners and the multitude of people who travel Indiana's transportation network. Feel free to explore this website and discover all of the valuable information it contains, such as road construction projects, details on doing business with INDOT, publications, maps, new project studies, and much much more.

**Public Involvement**

**Programs/Events**

**I-69 Evansville to Indy**

**Home**

- News Release that I-69 Study Marks Major Milestone with Final Environmental Impact Statement
  - Tier 1 Final Environmental Impact Statement (FEIS) Download and Comment Page
  - Tier 1 Final Environmental Impact Statement Contents
  - Cover Sheet, Letter and Table of Contents for the Tier 1 Final Environmental Impact Statement (FEIS) \* (December 5, 2003)
  - NEW - Apply for a Driveway Permit
  - INDOT News Highlight \*
  - Hot Jobs \*

## Doing Business with INDOT

- Contractors and Consultants
  - [Construction Contracts Information](#) (Contractors)  
For Contractors/Suppliers working on INDOT contracts.
  - [Designer Information](#) (Consultants)  
For all designers working on INDOT projects or using INDOT data.
  - [Professional Services Bulletins](#)
  - [Certified Technician Program Information](#)

## Standards and Specifications

- [Standard Drawings](#)
- [Standard Specifications with Supplementals](#)
- [Recurring Special Provisions](#)
- [Design Policy, Design Manual and More....](#)
- [Latest Updates](#)
- [Standards Committee Agenda & Minutes](#)

## Standard Specifications with Supplementals

- Complete Copy:
  - [1999 Standard Specifications Book](#),  
Effective for lettings Between September 1, 2004 and February 28, 2005
  - [1999 Standard Specifications Book](#),  
Effective for lettings Between March 1, 2004 and August 31, 2004
  - [1999 Standard Specifications Book](#),  
Effective for lettings Between September 1, 2003 and February 28, 2004
  - [1999 Standard Specifications Book](#),  
Effective for lettings Between March 1, 2003 and August 31, 2003
  - [1999 Standard Specifications Book](#),  
Effective for lettings Between September 1, 2002 and February 28, 2003

**Standard Specifications with Supplementals**  
 1999 Standard Specifications  
 Effective on or after March 1, 2004

Sections and Titles	The PDF Version	MS Word Version
Cover Page and SI Units	<a href="#">Cover.pdf</a> (63k)	<a href="#">Cover.doc</a> (85k)
Table of Contents	<a href="#">Toc.pdf</a> (220k)	<a href="#">Toc.doc</a> (281k)
Pay Items	<a href="#">Pay items.pdf</a> , (93k)	<a href="#">Pay items.doc</a> (72k)
Section 100 General Provisions	<a href="#">Sec100.pdf</a> 360k	<a href="#">Sec 100.doc</a> 587k
Section 200 Earthwork	<a href="#">Sec200.pdf</a> 298k	<a href="#">Sec 200.doc</a> 516k
Section 300 Bases	<a href="#">Sec300.pdf</a> 76k	<a href="#">Sec 300.doc</a> 127k
Section 400 Bituminous Pavements	<a href="#">Sec400.pdf</a> 187k	<a href="#">Sec 400.doc</a> 463k
Section 500 Rigid Pavements	<a href="#">Sec500.pdf</a> 209k	<a href="#">Sec 500.doc</a> 425k
Section 600 Incidental Construction	<a href="#">Sec600.pdf</a> 291k	<a href="#">Sec 600.doc</a> 670k
Section 700 Structures	<a href="#">Sec700.pdf</a> 544k	<a href="#">Sec 700.doc</a> 1,348k
Section 800 Traffic Control Devices and Lighting	<a href="#">Sec800.pdf</a> 270k	<a href="#">Sec 800.doc</a> 452k
Section 900 Materials Details	<a href="#">Sec900.pdf</a> 767k	<a href="#">Sec 900.doc</a> 2,206k

**SECTION 200 – EARTHWORK**

**SECTION 201 – CLEARING AND GRUBBING**

**201.01 Description.** This work shall consist of clearing, grubbing, removing, and disposing of all vegetation and debris, except such objects as are designated to remain or are to be removed in accordance with other sections of these specifications, within the construction limits shown on the plans. If no construction limits are shown, the right-of-way and easement areas will be the construction limits. This work shall include the preservation from injury or defacement of all vegetation and objects designated to remain.

**CONSTRUCTION REQUIREMENTS**

**201.02 General.** Right-of-way lines and construction limits will be established. Trees, shrubs, plants, seeded or sodded shoulders, slopes or other things to remain will be designated. All such designated items and vegetation shall be preserved. All areas outside the construction limits shall remain in their original condition. All damage to natural terrain, vegetation, objects designated to remain, or areas outside the construction limits which have subsequently eroded or been damaged, shall be repaired or replaced in accordance with 621.10.1. Tree wound dressing required for cut or scarred surfaces of trees or shrubs selected for retention shall be in accordance with 914.09(c).

## Standard Documents Availability

### Department INTERNET Websites

- **Standard Drawings:**  
[www.in.gov/dot/div/contracts/standards/drawings/index.html](http://www.in.gov/dot/div/contracts/standards/drawings/index.html)  
 Click on desired effective date. Make choice of English- or Metric-measure set.

## Standards and Specifications

- [Standard Drawings](#)
- [Standard Specifications with Supplementals](#)
- [Recurring Special Provisions](#)
- [Design Policy, Design Manual and More....](#)
- [Latest Updates](#)
- [Standards Committee Agenda & Minutes](#)

## Standard Drawings

- **Effective On or After September 1, 2004**
  - [Standard Drawing Complete Set](#)
  - [Standard Drawings Index](#)
  - Revised and New Drawings
    - [Metric](#)
    - [English](#)
- **Effective On or After March 1, 2004**
  - [Standard Drawing Complete Set](#)
  - [Standard Drawings Index](#)
  - Revised and New Drawings
    - [Metric](#)
    - [English](#)

## Standard Drawings

Effective: On or After March 1, 2004

**Important:**  
 Note: Please download the latest version of Acrobat Reader, this will eliminate many errors that has been occurring on the earlier versions. The new version is available only at <http://www.adobe.com/prodindex/acrobat/readstep.html>

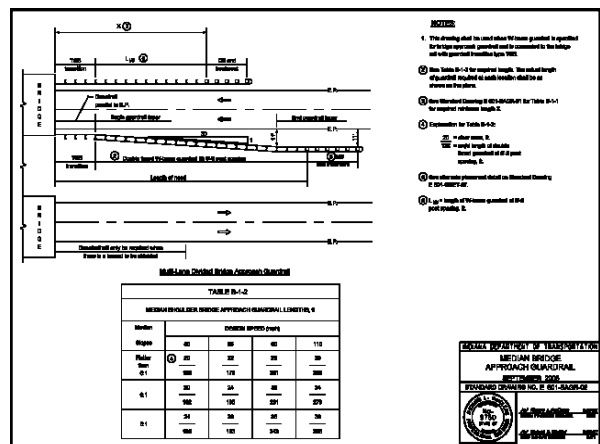
**Important:** If you want to save a PDF file in your machine, then please read the following [Helpful Hints](#)

### Complete Set:

Note: The complete set is also available on CD, for more information see [Publications List](#)

METRIC	ENGLISH
<ul style="list-style-type: none"> <li>Sections 100, 200 and 300; 100 General Provisions 200 Earthwork 300 Bases</li> <li>Sections 400 and 500; 400 Bituminous Pavements 500 Rigid Pavements</li> <li>Section 600 Incidental Construction</li> <li>Section 700 Structures</li> <li>Section 800 Traffic Control Devices and Lighting</li> <li>Section 900 Materials Details</li> </ul>	<ul style="list-style-type: none"> <li>Sections 100, 200 and 300; 100 General Provisions 200 Earthwork 300 Bases</li> <li>Sections 400 and 500; 400 Bituminous Pavements 500 Rigid Pavements</li> <li>Section 600 Incidental Construction</li> <li>Section 700 Structures</li> <li>Section 800 Traffic Control Devices and Lighting</li> <li>Section 900 Materials Details</li> </ul>

Standard Drawings	English Metric	Sections 100-300	Sections 400, 500	Section 600	Section 700
Effective for Lettings on or after March 1, 2004					
English Standard Drawings					
Section 600 - Incidental Construction					
Ref.	Code	Page	Code Meaning	Drawing Title	
E601	BAGR	01	<a href="#">Bridge Approach Guardrail</a>	Roadside Bridge Approach Guardrail	
E601	BAGR	02	<a href="#">Bridge Approach Guardrail</a>	Median Bridge Approach Guardrail	
E601	CWGS	01	<a href="#">Curved W-Beam Guardrail System</a>	Curved W-Beam Guardrail Connector System	
E601	CWGS	02	<a href="#">Curved W-Beam Guardrail System</a>	Curved W-Beam Guardrail System	
E601	CWGS	03	<a href="#">Curved W-Beam Guardrail System</a>	Curved W-Beam Guardrail System	
E601	CWGS	04	<a href="#">Curved W-Beam Guardrail System</a>	Curved W-Beam Guardrail System	
E601	CWGS	05	<a href="#">Curved W-Beam Guardrail System</a>	Curved W-Beam Guardrail System	
E601	CWGS	06	<a href="#">Curved W-Beam Guardrail System</a>	Curved W-Beam Guardrail System	
E601	CWGT	01	<a href="#">Curved W-Beam Guardrail Terminal</a>	Curved W-Beam Guardrail Terminal System	
E601	CWGT	02	<a href="#">Curved W-Beam Guardrail Terminal</a>	Curved W-Beam Guardrail Terminal System	





## Standard Documents Availability

### Department INTERNET Websites

- **Metric-Units Design Manual:**  
[www.in.gov/dot/div/contracts/standards/dm/](http://www.in.gov/dot/div/contracts/standards/dm/)  
Click on desired Manual Part. English-units version not yet available.

## Standards and Specifications

- [Standard Drawings](#)
- [Standard Specifications with Supplementals](#)
- [Recurring Special Provisions](#)
- [Design Policy, Design Manual and More....](#)
- [Latest Updates](#)
- [Standards Committee Agenda & Minutes](#)

## Design Policy

- [Design Manual Information](#)
- [Design Memos](#)
- [Electronic Frames](#)
- [Pipe Material Selection Program](#) (executable file)
- [Underdrain Table](#) (zipped MS Excel file)

## Design Manual

- [Design Memorandums](#)
- [Design Manual On-Line Version](#) \*(opens in new window)\*

## The Indiana Design Manual

Part 1	Chapters 1-13	<a href="#">"Project Development"</a>
Part 2	Chapters 14-21	<a href="#">"Plan Development"</a>
Part 3	Chapters 22-27	<a href="#">"Location Surveys"</a>
Part 4	Chapters 28-39	<a href="#">"Hydrology/Hydraulics"</a>
Part 5	Chapters 40-57	<a href="#">"Road Design"</a>
Part 6	Chapters 58-74	<a href="#">"Structural Design"</a>
Part 7	Chapters 75-80	<a href="#">"Traffic Design"</a>
Part 8	Chapters 81-84	<a href="#">"Work Zone Traffic Control"</a>
Part 9	Chapters 85-87	<a href="#">"Right-of-Way"</a>

## Part 5 Road Design

Chapter Forty	<a href="#">BASIC DESIGN CONTROLS</a>
Chapter Forty-one	<a href="#">HIGHWAY CAPACITY</a>
Chapter Forty-two	<a href="#">SIGHT DISTANCE</a>
Chapter Forty-three	<a href="#">HORIZONTAL ALIGNMENT</a>
Chapter Forty-four	<a href="#">VERTICAL ALIGNMENT</a>
Chapter Forty-five	<a href="#">CROSS SECTION ELEMENTS</a>
Chapter Forty-six	<a href="#">INTERSECTIONS AT-GRADE</a>
Chapter Forty-seven	<a href="#">RAILROAD/HIGHWAY GRADE CROSSINGS</a>
Chapter Forty-eight	<a href="#">INTERCHANGES</a>





Item No. 35-6  
Mr. Cales  
Date: 2/19/04

REVISION TO 1999 STANDARD SPECIFICATIONS

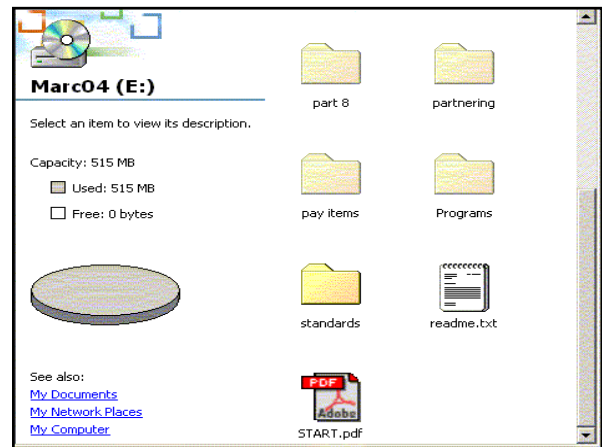
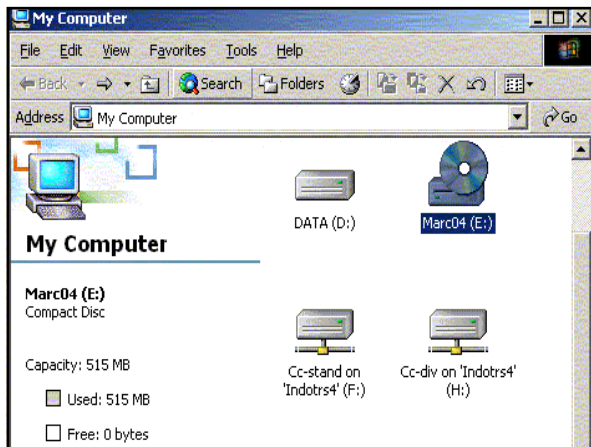
SECTION 616, BEGIN LINE 141, DELETE AND INSERT AS FOLLOWS:  
~~Grouted riprap, and precast Precast concrete riprap, including the area occupied by the wedge course, will be measured by the square meter (square yard), parallel to the slope. Grouted riprap will be measured by the square meter (square yard) of the type specified.~~

SECTION 616, AFTER LINE 150, INSERT AS FOLLOWS:  
 Coarse aggregate size 2 or uniform riprap used for making riprap traversable will be measured by the square meter (square yard) in accordance with 109.01(b).

## Standard Documents Availability

**Construction and Design Reference Guide CD,  
Effective March 2004 Letting --  
Getting Started:**

1. On Desktop, click on My Computer
2. Click on Marc04(E:)
3. Click on START.pdf
4. Get CD Publications menu



## The Indiana Department of Transportation CD Publication

Contract Documents	Indiana Design Manual	Other Resources	Helpful Information
Specifications Book with Supplement <a href="#">New updates</a>	Temporary Erosion & Sediment Control -Chapter 37	General Instructions for Field Employees (G.I.F.E.)	Links to latest updates
Standard Drawings English / Metric <a href="#">New updates</a>	Work Zone Traffic Control Part VIII	Partnering Handbook	Adobe Acrobat Reader with Search
Recurring Special Provisions with Recurring Drawings <a href="#">New updates</a>		Manual on Uniform Traffic Control Devices (M.U.T.C.D.)	Help using Adobe Acrobat
<b>Pay Items</b>	<b>Materials &amp; Tests</b>	Standard Highway Signs	TEXT SEARCH Search Tips
Unit Price Averages	Approved Lists	Environmental Manual on Construction Activity	
Pay Items Lists English / Metric	Indiana Test Methods or Procedures	Construction Memorandums	

## Construction and Design Reference Guide CD

- **Standard Specifications**

1. On CD Publications menu, under Contract Documents, click on Specifications Book with Supplement
2. Get Standard Specifications Book Index
3. Click on desired even-hundred section number and title
4. Get list of section numbers and titles for desired even-hundred section
5. Click on desired section title
6. Get PDF file of desired Specifications section

**Contract Documents**

Specifications Book  
with Supplement  
**New updates**

Standard Drawings  
English / Metric  
**New updates**

Recurring Special Provisions  
with Recurring Drawings  
**New updates**

**Standard Specifications** internet updates

**Book Index**

- ▶ Section 100 General Provisions
- ▶ Section 200 Earthwork
- ▶ Section 300 Aggregate Pavement and Bases
- ▶ Section 400 Asphalt Pavements
- ▶ Section 500 Concrete Pavements
- ▶ Section 600 Incidental Construction
- ▶ Section 700 Structures
- ▶ Section 800 Traffic Control Devices and Lighting
- ▶ Section 900 Materials Details
- ▶ Cover Page
- ▶ Pay Items
- ▶ Table of contents

**Standard Specifications**

**Section 600**

**Incidental construction**

- ▶ 601 Guardrail
- ▶ 602 Concrete Barrier
- ▶ 603 Fences
- ▶ 604 Sidewalks, Curb Ramps, Steps and Handrails
- ▶ 605 Curbing
- ▶ 606 Shoulder Corrugations
- ▶ 607 Paved Side Ditch or Concrete Gutter
- ▶ 608 Shoulder Drains
- ▶ 609 Reinforced Concrete Bridge Approaches
- ▶ 610 Surfaces for Approaches and Crossovers
- ▶ 611 Mailbox Installations
- ▶ 612 Undersealing
- ▶ 613 Salvaged Road Materials
- ▶ 614 Concrete Header

**SECTION 604 – SIDEWALKS, CURB RAMPS, STEPS, AND HANDRAILS**

**604.01 Description.** This work shall consist of constructing HMA or PCC sidewalks; curb ramps; concrete steps; or the reconstruction of PCC sidewalks in accordance with 105.03.

**MATERIALS**

**604.02 Materials.** Materials shall be in accordance with the following:

Course Aggregate, Class D or Higher, Size No. 53 .....	904
Concrete, Class A .....	702
Detectable Warning Elements .....	905.05
Fine Aggregate, Size No. 23, No. 24, or No. 15 .....	904
Joint Filler .....	906.01
Paint .....	909.05
Reinforcing Bars .....	910.01
Silica Sand .....	ASTM C 778

Hand railing shall be aluminum pipe in accordance with ASTM 221, alloy 6063, temper T52 or galvanized steel pipe in accordance with ASTM A 53, grade B, all as specified.

The detectable warning elements shall be set in a thin set latex modified mortar in accordance with ANSI A108.1 or as recommended by the element manufacturer for outdoor use for adhering brick to concrete.

A type A certification in accordance with 916 for detectable warning elements and thin set latex modified mortar shall be furnished prior to use of the materials.

A type C certification in accordance with 916 for the silica sand shall be furnished prior to use of the material.

**CONSTRUCTION REQUIREMENTS**

**604.03 Portland Cement Concrete Sidewalks and Curb Ramps.**

**Construction and Design Reference Guide CD**

- **Standard Drawings**

1. On CD Publications menu, under Contract Documents, click on Standard Drawings English / Metric
2. You're interested in an english-units drawing, so click on the Click Here for English Standard Drawings bar
3. In the listing of even-hundred drawing numbers titles, click on the desired one
4. Get a listing arranged numerically by drawing numbers, then 4-alpha codes
5. Click on desired Code Meaning
6. Get PDF file of desired drawing

**Contract Documents**

Specifications Book  
with Supplement  
**New updates**

Standard Drawings  
English / Metric  
**New updates**

Recurring Special Provisions  
with Recurring Drawings  
**New updates**



Internet updates

## Metric Standard Drawings

Click Here For English Standard Drawings

- ▶ Section 100 General Provisions
- Section 200 Earthwork
- Section 300 Aggregate Pavement and Bases
- ▶ Section 400 Asphalt Pavements
- Section 500 Concrete Pavements
- ▶ Section 600 Incidental Construction
- ▶ Section 700 Structures
- ▶ Section 800 Traffic Control Devices and Lighting
- ▶ Section 900 Materials Details

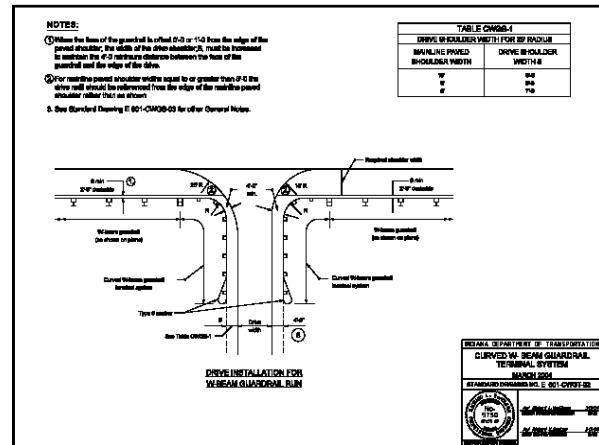
## English Standard Drawings

Click Here For Metric Standard Drawings

- ▶ Section 100 General Provisions
- Section 200 Earthwork
- Section 300 Aggregate Pavement and Bases
- ▶ Section 400 Asphalt Pavements
- Section 500 Concrete Pavements
- ▶ Section 600 Incidental Construction
- ▶ Section 700 Structures
- ▶ Section 800 Traffic Control Devices and Lighting
- ▶ Section 900 Materials Details

English Standard Drawings  
Effective for Lettings on or After March 1, 2004  
Section 600: Incidental Construction

Spec. Ref.	Code	Page	Code Meaning	Drawing Title	Date
E601	BAGR	01	Bridge Approach Guardrail	Roadside Bridge Approach Guardrail	5/3/99
E601	BAGR	02	Bridge Approach Guardrail	Median Bridge Approach Guardrail	9/2/03
E601	CWGS	01	Curved W-Beam Guardrail System	Curved W-Beam Guardrail Connector System	9/2/03
E601	CWGS	02	Curved W-Beam Guardrail System	Curved W-Beam Guardrail System	1/3/00
E601	CWGS	03	Curved W-Beam Guardrail System	Curved W-Beam Guardrail System	9/1/99
E601	CWGS	04	Curved W-Beam Guardrail System	Curved W-Beam Guardrail System	3/1/02
E601	CWGS	05	Curved W-Beam Guardrail System	Curved W-Beam Guardrail System	4/1/96
E601	CWGS	06	Curved W-Beam Guardrail System	Curved W-Beam Guardrail System	4/3/95
E601	CWGT	01	Curved W-Beam Guardrail Terminal	Curved W-Beam Guardrail Terminal System	9/2/03
E601	CWGT	02	Curved W-Beam Guardrail Terminal	Curved W-Beam Guardrail Terminal System	3/1/04



### Effective Documents Timing

- Department website and CD updates are effective with March and September lettings of each year for Standard Specifications and Drawings.
- The website is updated and a CD is issued with these updates about 6 to 7 months before each such effective letting date.

### Effective Documents Timing

- Design Policy and Technical Advisory documents which complement Standard Specifications and Drawings alterations are posted on the website upon Standards Committee passage at [www.in.gov/dot/div/contracts/standards/memos/index.html](http://www.in.gov/dot/div/contracts/standards/memos/index.html)
- Other Technical Advisories which do not require Committee approval are also posted here upon their development.

## Effective Documents Timing

- Policy Changes and Technical Advisories are electronically incorporated into the Design Manual annually in early summer.
- The website's electronic version is made to reflect these changes.
- Hardcopy versions of the changes are issued to all Manual holders at this time.

## Effective Documents Timing

- Policy Changes and Technical Advisories, once incorporated into the Manual after the Manual changes are issued, are then deleted from the Memos website.

## 4. CHANGES TO STANDARD DOCUMENTS IN 2002 AND 2003

## Changes to Standard Documents

- In this presentation we will only report changes that have occurred, or soon will, with some background information.
- We will not make nor entertain editorial comments about the changes.

## AASHTO 2001 Policy On Geometric Design of Highways and Streets, b.k.a. "The Green Book"

1. The truck eye height is lowered from 8 ft to 7.6 ft (2.45 m to 2.33 m).
2. The object height for stopping sight distance is raised from 6 in. to 24 in. (150 mm to 600 mm).
3. Longer stopping sight distances are therefore required.
4. The cumulative result of these changes is longer sag vertical curves and shorter crest vertical curves.

DESIGN SPEED (km/h)	ROUNDED SSD FOR DESIGN <sup>1</sup> (m)		CALCULATED K-VALUES <sup>2</sup>		K-VALUES ROUNDED FOR DESIGN	
	Des	Min	Des	Min	Des	Min
20	31	30	1.0	0.8	0	1
30	46.5	44.5	2.0	1.5	2	2
40	62	57	3.0	2.2	3	2
50	78	69	4.0	3.0	4	3
60	94	84	5.0	4.0	5	4
70	110	100	6.0	5.0	6	5
80	126	115	7.0	6.0	7	6
90	142	130	8.0	7.0	8	7
100	158	145	9.0	8.0	9	8
110	174	160	10.0	9.0	10	9
120	190	175	11.0	10.0	11	10

Notes:

<sup>1</sup> Stopping sight distances (SSD) are from Figure 42-1A.

<sup>2</sup> K-values are calculated using rounded for design stopping sight distances, eye height of 1500 mm and object height of 450 mm.

<sup>3</sup> If curbs are present, and  $K > 31$ , proper pavement drainage should be ensured near the high point of the curve.

K-VALUES FOR CREST VERTICAL CURVES  
(Stopping Sight Distance - Passenger Cars)

Figure 44-3A

DESIGN SPEED (km/h)	ROUNDED SSD FOR DESIGN <sup>1</sup> (m)		CALCULATED K VALUES <sup>2</sup>		K VALUES ROUNDED FOR DESIGN	
			$K = \frac{S^2}{122 + 3.5S}$			
	Desirable	Minimum	Desirable	Minimum	Desirable	Minimum
20	20	20	3.1	3.1	3	4
30	35	30	4.5	4.5	4	4
40	50	40	6.5	6.5	9	4
50	65	45	12.4	12.2	10.0	11
60	85	50	17.3	17.0	18	16
70	105	55	22.6	22.0	23	22
80	130	60	29.4	28.0	30	27
90	160	65	37.6	36.0	38	33
100	185	70	46.9	45.0	45	38
110	220	75	58.4	56.0	55	44
120	250	80	71.8	69.0	65	52

Notes:

- Stopping sight distances (SSD) are from Figure 42-1A.
- K-values calculated using rounded for design stopping sight distances and a headlight height of 660 mm.
- If curves are present and  $K < 3L$ , proper drainage should be ensured near the low point of the curve.

**K-VALUES FOR SAG VERTICAL CURVES**  
(Stopping Sight Distance - Passenger Cars)

Figure 44-3C

## Shoulder Corrugations

- A design policy and Standard Specifications have been established to complement the Standard Drawings.
- Corrugations may only be milled, and may not be rolled or formed.

**SECTION 606 – SHOULDER CORRUGATIONS**

**606.01 Description.** This work shall consist of placing corrugations in paved shoulders in accordance with 105.03. Corrugations shall not be constructed within the limits of reinforced concrete bridge approaches or on bridge decks.

The operation shall be coordinated such that milled materials do not encroach on pavement lanes carrying traffic and all milled materials are disposed of in accordance with 104.07.

The corrugations shall be constructed by cutting smooth strips in existing or newly constructed shoulders. The operation shall be conducted by means of a cutting machine that provides a series of smooth cuts without tearing or snagging. The equipment shall include guides to maintain uniformity and consistency in the alignment of the strips.

**606.02 Method of Measurement.** HMA and PCCP shoulder corrugations will be measured by the meter (linear foot), measured parallel to the center line of the roadway. Gaps in PCCP shoulder corrugations at the D-1 joints will be included as milled PCCP corrugations.

**606.03 Basis of Payment.** HMA and PCCP shoulder corrugations will be paid for at the contract unit price per meter (linear foot), when specified.

Payment will be made under:

Pay Item	Pay Unit
Milled HMA Shoulder Corrugations.....	m (LFT)
Milled PCCP Shoulder Corrugations.....	m (LFT)

**45-1.02(06) Shoulder Corrugations**

Shoulder corrugations should be considered for shoulders only on a roadway designed as a rural facility.

The minimum paved width for an outside shoulder to be corrugated is 6 ft (1.8 m). If guardrail, concrete barrier railing, or another type of roadside barrier is adjacent to an outside shoulder, such minimum paved width is 7 ft (2.1 m). The minimum paved width for a median shoulder to be corrugated is 4 ft (1.2 m).

Shoulder corrugations should be milled, not rolled, with no regard to the shoulder pavement material.

## Subgrade Treatment

- The Department's Materials and Tests Division's Geotechnical Section will specify one of 5 newly identified treatment methods to be used for each project that requires such treatment.
- The contractor may choose from options within the type specified.

**17-3.02 Subgrade Treatment**

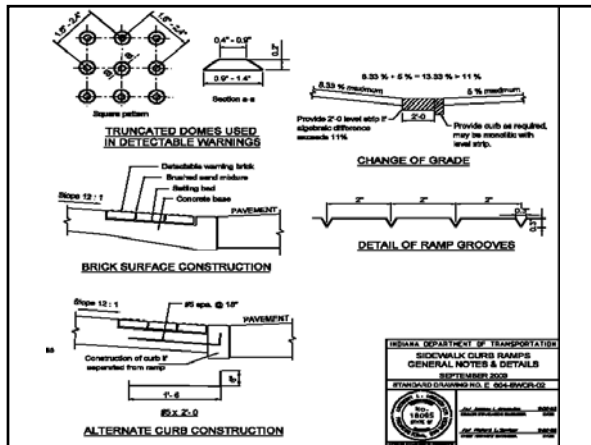
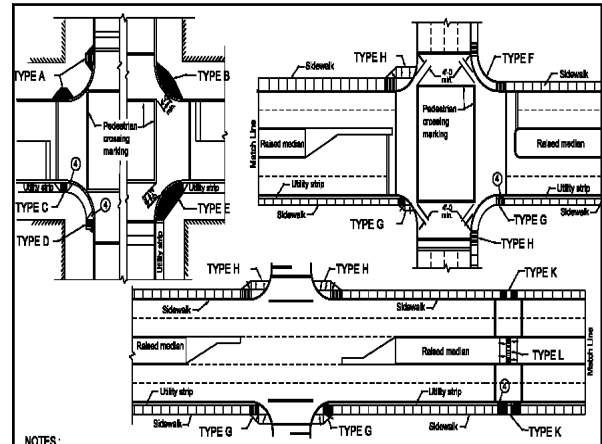
The subgrade treatment methods are as follows.

- Type A:** This treatment consists of 16 in. (400 mm) of chemical soil modification, or 12 in. (300 mm) of the subgrade excavated and replaced with coarse aggregate No. 53. Where granular soils classified in accordance with AASHTO M 145 as A-1, A-2, or A-3 exist, the subgrade may be treated by compacting 24 in. (600 mm) to density and moisture requirements.
- Type B:** This treatment consists of 8 in. (200 mm) of chemical soil modification, or 6 in. (150 mm) of the subgrade excavated and replaced with coarse aggregate No. 53. Where granular soils classified in accordance with AASHTO M 145 as A-1, A-2, or A-3 exist, the subgrade may be treated by compacting 12 in. (300 mm) to density and moisture requirements.
- Type C:** This treatment consists of 24 in. (600 mm) compacted to the density and moisture requirements, or 12 in. (300 mm) of subgrade excavated and replaced with coarse aggregate No. 53, or 16 in. (400 mm) of chemical soil modification.
- Type D:** This treatment consists of 12 in. (300 mm) compacted to the density and moisture requirements, or 6 in. (150 mm) of subgrade excavated and replaced with coarse aggregate No. 53, or 8 in. (200 mm) of chemical soil modification.
- Type E:** This treatment consists of 6 in. (150 mm) compacted to the density and moisture requirements, or 6 in. (150 mm) of subgrade excavated and replaced with coarse aggregate No. 53.



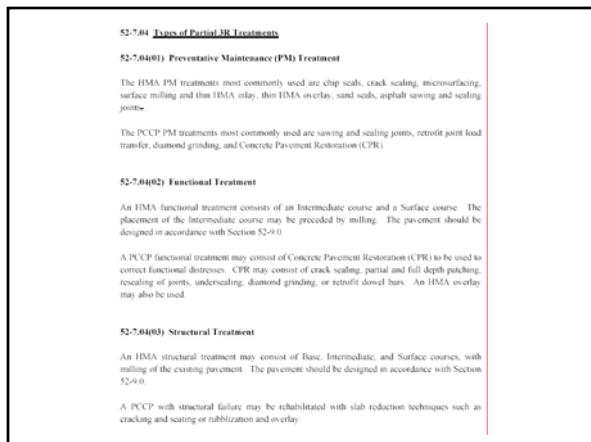
## Sidewalk Curb Ramps

- Colored, textured tactile warning devices have been added per ADA requirements.
- Some curb ramp types and uses have been changed per ADA requirements.



## Partial 3R Work

- Work that had been identified as “resurface” work has been renamed as *Partial 3R*, which includes the pavement treatments as follows:
  - Preventative Maintenance
  - Functional
  - Structural



## Context-Sensitive Design

- A design policy has been established which intends to have the designer consider the concept of context sensitivity in the design process.

### ***Interstate-Routes Lane Closures***

- *Policy establishes the minimum number of open traffic lanes in construction zones on selected routes and locations within each such route.*

### ***Treatment of Drinking Water and Wastewater in Rest Areas***

- *Policy establishes need for possible dedicated water treatment plants and other considerations for rest areas per federal and IDEM regulations.*

### ***Pavement Milling***

- *Five milling types established, based on ultimate pavement treatment.*
1. *Asphalt Scarification or Profile Milling*
  2. *Asphalt Milling*
  3. *Asphalt Removal Milling*
  4. *Concrete Pavement Milling*
  5. *Transitions Milling*

## ***5. FORTHCOMING STANDARDS CHANGES***

### ***AASHTO 2002 Roadside Design Guide***

1. *Consider backslope when establishing clear zone width*
2. *In work zone, base design speed on original posted limit instead of work-zone posted limit*
3. *Establish work-zone pavement dropoff depth policy*
4. *Revise mailbox approach widths based on new AADT ranges*

### ***TL-4 Thrie-Beam Guardrail***

- *This is a new steel-beam and -post guardrail configuration which has been successfully crash tested to NCHRP 350 Test Level 4.*
- *It may be used as a barrier along an outside shoulder or as a median barrier.*

### ***TL-4 Thrie-Beam Bridge Railing***

- *This is a new steel bridge railing configuration which has been successfully crash tested to NCHRP 350 Test Level 4.*
- *It may be used on a bridge in lieu of a truck-height concrete bridge railing, either along an outside coping or as a median barrier.*

### ***Public Road Approaches***

- *Geometrics to be revised to accommodate the design vehicles' turning radii which they are intended to accommodate.*

### ***Retaining Walls***

- *Establish design policy, standard specifications, and standard details as required for all types of retaining walls.*
- *Provide design information as to the best type of wall appropriate for each cut or fill situation, and depth of retained material.*

### ***Placing Concrete Railing At or Near MSE Retaining Wall***

- *Details and design policy in development which establish standard location of railing as follows:*
  1. *Atop or near the top of a wall*
  2. *Alongside the bottom of exposed portion of a wall*

### ***Bridge Bearing Assemblies***

- *Standardize bearing assemblies for use with steel beams and prestressed concrete bulb-tee girders.*

### ***Forthcoming Changes***

- ***When to take place ?***  
*All of the forthcoming changes described here are expected to be considered by the Standards Committee within the next 1 to 6 months. Once passed by the Committee, they could take effect yet in 2004.*

## HALFTIME !!

- No Justin
- No Janet
- BUT PLEASE BE BACK  
IN 15 MINUTES.

## 6. WHERE CHANGES ARE IDENTIFIED

### Standard Documents Changes

- How Identified on Website:

#### Standard Specifications

1. Click on **Complete Copy** for desired effective letting dates range.
2. Click on **The PDF Version** of the desired section and title.
3. Changes since the last letting dates' range version are highlighted in yellow.

### Standards and Specifications

- [Standard Drawings](#)
- [Standard Specifications with Supplementals](#)
- [Recurring Special Provisions](#)
- [Design Policy, Design Manual and More....](#)
- [Latest Updates](#)
- [Standards Committee Agenda & Minutes](#)

### Standard Specifications with Supplementals

#### Complete Copy:

- [1999 Standard Specifications Book](#),  
Effective for lettings Between September 1, 2004 and February 28, 2005
- [1999 Standard Specifications Book](#),  
Effective for lettings Between March 1, 2004 and August 31, 2004
- [1999 Standard Specifications Book](#),  
Effective for lettings Between September 1, 2003 and February 28, 2004
- [1999 Standard Specifications Book](#),  
Effective for lettings Between March 1, 2003 and August 31, 2003
- [1999 Standard Specifications Book](#),  
Effective for lettings Between September 1, 2002 and February 28, 2003

### Standard Specifications with Supplementals

1999 Standard Specifications  
Effective on or after March 1, 2004

Sections and Titles	The PDF Version	MS Word Version
Cover Page and SI Units	<a href="#">Cover.pdf</a> (63k)	<a href="#">Cover.doc</a> (85k)
Table of Contents	<a href="#">Toc.pdf</a> (220k)	<a href="#">Toc.doc</a> (281k)
Pay Items	<a href="#">Pay items.pdf</a> , (93k)	<a href="#">Pay items.doc</a> (72k)
Section 100 General Provisions	<a href="#">Sec100.pdf</a> 360k	<a href="#">Sec 100.doc</a> 587k
Section 200 Earthwork	<a href="#">Sec200.pdf</a> 298k	<a href="#">Sec 200.doc</a> 516k
Section 300 Bases	<a href="#">Sec300.pdf</a> 76k	<a href="#">Sec 300.doc</a> 127k
Section 400 Bituminous Pavements	<a href="#">Sec400.pdf</a> 187k	<a href="#">Sec 400.doc</a> 463k
Section 500 Rigid Pavements	<a href="#">Sec500.pdf</a> 209k	<a href="#">Sec 500.doc</a> 425k
Section 600 Incidental Construction	<a href="#">Sec600.pdf</a> 291k	<a href="#">Sec 600.doc</a> 670k
Section 700 Structures	<a href="#">Sec700.pdf</a> 544k	<a href="#">Sec 700.doc</a> 1,348k
Section 800 Traffic Control Devices and Lighting	<a href="#">Sec800.pdf</a> 270k	<a href="#">Sec 800.doc</a> 452k
Section 900 Materials Details	<a href="#">Sec900.pdf</a> 767k	<a href="#">Sec 900.doc</a> 2,206k

ESAL CATEGORY	ESAL
1	< 300,000
2	300,000 to < 3,000,000
3	3,000,000 to < 10,000,000
4	10,000,000 to < 30,000,000
5	≥ 30,000,000

**401.05 Volumetric Mix Design.** The DMF shall be determined for each mixture from a volumetric mix design by a design laboratory selected from the Department's list of approved Mix Design Laboratories. A volumetric mixture shall be designed in accordance with the respective AASHTO and ASTM references as listed below.

Standard Specification for Superpave  
Volumetric Mix Design ..... AASHTO MP 2

## Standard Documents Changes

- **How Identified on Website:**

**Standard Drawings**

1. Click on Revised and New Drawings for effective letting date desired.
2. Click on Metric or English as desired to see a drawings list arranged numerically by Standard Specifications section number.
3. The Drawing Subject may be clicked on to view the revised or new drawing.

## Standards and Specifications

- [Standard Drawings](#)
- [Standard Specifications with Supplementals](#)
- [Recurring Special Provisions](#)
- [Design Policy, Design Manual and More....](#)
- [Latest Updates](#)
- [Standards Committee Agenda & Minutes](#)

## Standard Drawings

- **Effective On or After September 1, 2004**

- [Standard Drawing Complete Set](#)
- [Standard Drawings Index](#)
- Revised and New Drawings
  - [Metric](#)
  - [English](#)

- **Effective On or After March 1, 2004**

- [Standard Drawing Complete Set](#)
- [Standard Drawings Index](#)
- Revised and New Drawings
  - [Metric](#)
  - [English](#)

### Standard Drawings

New English Standard Drawings  
Effective for Lettings on or After March 1, 2004

Sec.	Code	Page	Drawing Subject	Drawing Contents	Date
E205	TECD	04	<a href="#">Temporary Erosion Control Ditch</a>	Temporary Sediment Trap	3/1/04
E402	TMPT	01	<a href="#">Pavement Treatment Termination</a>	Termination Of Mainline Pavement Overlay	3/1/04
E503	CCPJ	03	<a href="#">PCCP Joints</a>	Longitudinal Joint	3/1/04
E503	CCPJ	06	<a href="#">PCCP Joints</a>	Transverse Joint Seals	3/1/04
E601	CWGT	02	<a href="#">Curved W-Beam Guardrail Terminal</a>	Curved W-Beam Guardrail Terminal System	3/1/04
E601	GRET	06	<a href="#">Guardrail End Treatment</a>	Grading At Guardrail End Treatments	3/1/04
E601	TTGB	03	<a href="#">Guardrail Transition Type TGB</a>	Guardrail Transition Type TGB	3/1/04
E601	TTGB	04	<a href="#">Guardrail Transition Type TGB</a>	Guardrail Transition Type TGB	3/1/04
E601	TTGB	05	<a href="#">Guardrail Transition Type TGB</a>	Guardrail Transition Type TGB	3/1/04
E601	WBGA	01	<a href="#">W-Beam Guardrail Assemblies</a>	W-Beam Guardrail Assemblies	3/1/04
E601	WBGC	03	<a href="#">W-Beam Guardrail Components</a>	W-Beam Guardrail Components	3/1/04
E605	CNCC	02	<a href="#">Concrete Center Curb</a>	Concrete Center Curb Type B	3/1/04
E609	BRJT	01	<a href="#">Bridge Joint</a>	Type 1A Joint	3/1/04
E609	RCBA	01	<a href="#">Reinforced Concrete Bridge Approach</a>	Bridge Approach Slab with Asphalt Pvmnt.	3/1/04
E609	RCBA	02	<a href="#">Reinforced Concrete Bridge Approach</a>	Bridge Approach Slab & Terminal Joint For PCCP	3/1/04

## Standard Documents Changes

- **How Identified on Website:**

**Indiana Design Manual**

1. Click on desired Part title.
2. Changes since the previous year's version are highlighted in yellow.

## ■ Standards and Specifications

- [Standard Drawings](#)
- [Standard Specifications with Supplementals](#)
- [Recurring Special Provisions](#)
- [Design Policy, Design Manual and More....](#)
- [Latest Updates](#)
- [Standards Committee Agenda & Minutes](#)

## ■ Design Policy

- [Design Manual Information](#)
- [Design Memos](#)
- [Electronic Frames](#)
- [Pipe Material Selection Program](#) (executable file)
- [Underdrain Table](#) (zipped MS Excel file)

## Design Manual

- [Design Memorandums](#)
- [Design Manual On-Line Version](#) \*(opens in new window)\*

## The Indiana Design Manual

Part 1	Chapters 1-13	<a href="#">"Project Development"</a>
Part 2	Chapters 14-21	<a href="#">"Plan Development"</a>
Part 3	Chapters 22-27	<a href="#">"Location Surveys"</a>
Part 4	Chapters 28-39	<a href="#">"Hydrology/Hydraulics"</a>
Part 5	Chapters 40-57	<a href="#">"Road Design"</a>
Part 6	Chapters 58-74	<a href="#">"Structural Design"</a>
Part 7	Chapters 75-80	<a href="#">"Traffic Design"</a>
Part 8	Chapters 81-84	<a href="#">"Work Zone Traffic Control"</a>
Part 9	Chapters 85-87	<a href="#">"Right-of-Way"</a>

## Part 8 Work Zone Traffic Control

Chapter Eighty-one [TRANSPORTATION MANAGEMENT PLANS](#)

Chapter Eighty-two [TRAFFIC CONTROL PLANS/DESIGN](#)

Chapter Eighty-three [TRAFFIC CONTROL DEVICES](#)

Chapter Eighty-four [RESERVED](#)

### 82-612 Two-Way Traffic on a Divided Highway

The following provides several design considerations where two-way traffic on a single roadway of a divided highway is used.

1. **Length.** The optimum segment length of two-way traffic on a divided highway is considered to be less than 6 km. Where the segment length exceeds 6 to 8 km, operational efficiency may be severely reduced as traffic backs up behind slower vehicles.
2. **Positive Protection.**
  - a. **Freeway.** Temporary concrete barrier along with temporary solid yellow lines as shown on the *INDOT Standard Drawings* should be used within each crossover and between the crossovers to separate opposing traffic.
  - b. **Other Multilane Roadway.** Tubular markers should be used to enhance the definition and separation of the opposing traffic flows on each side of a temporary double solid yellow line. The tubular markers are placed onto the pavement between the solid yellow lines as shown on the *INDOT Standard Drawings*.



## Standard Documents Changes

- **How Identified on CD:**

### Standard Specifications

1. In the CD Publication menu under Contract Documents, click on New Updates to see a listing of section numbers, section titles, and the date of Standards Committee passage of the change.
2. Click on Specifications Book with Supplement, click on desired even-hundred section number in Book Index, and click on the desired section title within the even hundred to see its specifications text. Changes since the last CD issuance are highlighted in yellow.

## Contract Documents

Specifications Book  
with Supplement  
**New updates**

Standard Drawings  
English / Metric  
**New updates**

Recurring Special Provisions  
with Recurring Drawings  
**New updates**

SPECIFICATION CHANGES FOR MARCH 1, 2004 CD		
Section	Title	Date
101.01	Abbreviations	5/22/03
105.17	Field Office	5/22/03
211.02	Materials	1/16/03
211.10	Basis of Payment	1/16/03
213	FLOWABLE <del>MORTAR</del> BACKFILL	1/16/03
302.06(a)	Aggregate Separation Layers and Dense Graded Subbase	5/22/03
304.05	Widening	5/22/03
304.07	Basis of Payment	5/22/03
401.05	Volumetric Mix Design	5/22/03
401.08	Job Mix Formula	5/22/03
401.09	Acceptance of Mixtures	5/22/03
401.16	Density	5/22/03
401.18	Pavement Smoothness	5/22/03
401.19	Pay Factors	5/22/03
401.19(b)	Density	5/22/03
401.19(c)	Smoothness	5/22/03
402.04	Design Mix Formula	5/22/03
402.05	Volumetric Mix Design	5/22/03
402.06	Job Mix Formula	5/22/03
402.08	Recycled Materials	5/22/03
402.09	Acceptance of Mixtures	5/22/03
405.02	Asphalt Material	5/22/03
405.07	Application of Asphalt Material	5/22/03
406.02	Asphalt Material	5/22/03
409.02	Mixing Plant	5/22/03
409.02(a)	Certified HMA Mixing Plant	5/22/03
409.02(m)	Plant Inspection	5/22/03

Changes in the source or types of aggregates shall require a new DMF. A new DMF shall be submitted to the District Materials and Tests Engineer for approval one week prior to use.

Changes in the source of specified binders, except for PG 58-28 or PG 64-22, shall require a new DMF.

The mixture design compaction temperature for the specimens shall be 150°C (300°F) for dense graded mixtures and 125°C (260°F) for open graded mixtures.

Design criteria for each mixture shall be based on the ESAL shown in the contract documents and shall be as follows:

## Standard Documents Changes

- **How Identified on CD:**

### Standard Drawings

1. In the CD Publication menu under Contract Documents, click on New Updates to see a memorandum that identifies which drawings are updated, plus background information regarding each update.
2. Click on Standard Drawings English / Metric then click on desired even-hundred Standard Specifications section number to see a listing of all drawings in that even hundred. The Date column shows the date in larger bolder type for the drawings changed since the last CD issuance.

## Contract Documents

Specifications Book  
with Supplement  
**New updates**

Standard Drawings  
English / Metric  
**New updates**

Recurring Special Provisions  
with Recurring Drawings  
**New updates**

March 1, 2004

**STANDARD DRAWING MEMORANDUM 04-3**

**TO:** All Designers, Operations and District Personnel, Consultants, Contractors, and Vendors

**THRU:** /s/ Richard K. Smutzer  
Richard K. Smutzer  
Chief Highway Engineer

**FROM:** /s/ Richard L. VanCleave  
Richard L. VanCleave  
Acting Standards Engineer

**SUBJECT:** New and Revised Standard Drawings

**EFFECTIVE:** Lettings Between March 1, 2004, and September 1, 2004

New and revised metric and English standard drawings have been approved by the Chief Highway Engineer with the date of March 1, 2004. The drawings which are listed below under Standards Committee Action were verbally approved during Standards Committee meetings by the Federal Highway Administration with the date of March 1, 2004. The drawings which are listed below under Editorial Changes were submitted to and approved by the Federal Highway Administration on March 27, 2003 and December 5, 2003 with an effective date of March 1, 2004.

The Standard Drawings Index has been revised also to reflect these changes which will be effective March 1, 2004.

All drawings and the current Standard Drawing Index appear on the Department compact disc dated March 2004.

**STANDARDS COMMITTEE ACTION**

The following drawings have been added to complement the new Chapter 56, Partial 3R Projects, in the *Indiana Design Manual*.

402-TMPT-01	Shows method for terminating mainline paving overlay.
610-DRIV-21	Indicates limits for paving overlay wedge at private or commercial drives.
610-PRAP-01	Shows method and limits for paving public road approaches where the mainline pavement is being overlaid.

The following drawings have been revised to increase epoxy coated reinforcing bar usage and slab thickness criteria for reinforced concrete bridge approaches and appurtenances thereto; to enhance Type 1-A joint details and to clarify the usage of dense graded subbase. Standard drawing numbers have been revised and will be in agreement with the new reinforced concrete bridge approach specifications section designation.

609-BRJT-01	Shows Type 1-A joint detail enhancement
609-RCBA-01	Adds upper slab reinforcement details and dense graded subbase
609-RCBA-02	Adds upper slab reinforcement details and dense graded subbase.
609-RCBA-03	Adds upper slab reinforcement layout details.
609-RCBA-04	Adds upper slab reinforcement layout details.
609-RCBA-05	Adds upper slab reinforcement quantities.
609-RCBA-06	Adds upper slab reinforcement quantities.
609-RCBA-07	Adds reinforced concrete bridge approach pavement ledge details.

**EDITORIAL REVISIONS**

205-TECD-04	Sediment trap slope and course Aggregate No. 8 filter stone information added.
503-CCPJ-03	Backer rod and sealant dimensions revised and notes added.
503-CCPJ-06	Sealant and backer rod depth dimensions clarified.
601-CWGT-02	Dimensions rounded and notes added.
601-GRET-06	Slope information added and Note No.6 revised and located on plan view.
601-TTGB-03	Hole pattern and Note No.3 added.
601-TTGB-04	Hole pattern and Note No.3 added.
601-TTGB-05	Hole pattern and Note No.3 added.
601-WBGA-01	Shoulder and ground slope notes added or enhanced and superfluous bolt note deleted.
601-WBGC-03	Hex head bolt detail deleted.
605-CNCC-02	Horizontal and radius dimensions added to Section C-C on English version; metric version effective date made consistent.

**Standard Documents Changes**

• **Policy Changes and Technical Advisories**

*A Policy Change document must accompany changes to Standard Specifications or Drawings if such changes affect design policy.*

*Like the changed specifications or drawings, it must be approved by the Standards Committee in order to take effect.*

**Standard Documents Changes**

• **Policy Changes and Technical Advisories**

*A Technical Advisory summarizes the actual affects on the Design Manual that are created by a Policy Change.*

*Technical Advisories need not be approved by the Standards Committee.*

*A Technical Advisory may be issued independent of a Policy Change. It may be required to clarify a design matter, or revise a design procedure but not actually change it.*

**HOW TO ACCESS  
POLICY CHANGES (PC)  
AND  
TECHNICAL ADVISORIES (TA)**

## PC and TA Access

- **Website**

**Domain:** [www.in.gov/dot/div/contracts/standards/memos/memos.html](http://www.in.gov/dot/div/contracts/standards/memos/memos.html)

1. Click on **Doing Business**
2. Under **Standard Specifications**, click on **Design Policy, Design Manual, and More**
3. Under **Design Policy**, click on **Design Memos**
4. Get reverse chronological listing of **TAs and PCs**
5. Under **PDF Files**, for desired memo number, Click on **Technical Advisory, Policy Change, or other wordage shown**
6. Get **PDF version of desired document**

## Doing Business with INDOT

- **Contractors and Consultants**

- [Construction Contracts Information](#) (Contractors)  
For Contractors/Suppliers working on INDOT contracts.
- [Designer Information](#) (Consultants)  
For all designers working on INDOT projects or using INDOT data.
- [Professional Services Bulletins](#)
- [Certified Technician Program Information](#)

- **Standards and Specifications**

- [Standard Drawings](#)
- [Standard Specifications with Supplementals](#)
- [Recurring Special Provisions](#)
- [Design Policy, Design Manual and More....](#)
- [Latest Updates](#)
- [Standards Committee Agenda & Minutes](#)

- **Standards and Specifications**

- [Standard Drawings](#)
- [Standard Specifications with Supplementals](#)
- [Recurring Special Provisions](#)
- [Design Policy, Design Manual and More....](#)
- [Latest Updates](#)
- [Standards Committee Agenda & Minutes](#)

Doing Business with INDOT - Standards and Specifications

**Design Memorandums and Memos**

- Note: Please download the latest version of Acrobat Reader, this will eliminate many errors that has been occurring on the earlier versions. The new version is available only at <http://www.adobe.com/acrobat/index/acrobatreaderstep.html>
- If you have any question, please call Maan Omran at 317-233-2097
- Important: If you want to save a PDF file in your machine, then please read the following [useful hints](#)

[Click here to print Design Memorandums Index](#)

[Link to Construction Memorandums](#)

All Design Memos issued prior to December 19, 2003, except the following, have been deleted from this list

Number	Date	Subject	PDF Files
03-19	12/08/03	Drainage in Curbed Section	Technical Advisory
03-18	12/08/03	Guardrail at Culverts	Technical Advisory
03-17	10/15/03	Reinforced Concrete Bridge Approaches (RCBA)	Technical Advisory Attachments (2 MB)
03-16	10/02/03	Pavement Milling	Technical Advisory Policy Change
03-15	10/02/03	Sidewalk Curb Ramps for Partial SR Projects	Technical Advisory
03-14	9/30/03	Rule 5 Submission for Erosion Control Plan	Technical Advisory
03-13	9/10/03	Guardrail End Treatment Type II Pay Limits	Technical Advisory
03-12	8/20/03	Specifications Conflict	Technical Advisory
03-11	8/12/03	Rest Area Drinking Water and Wastewater Treatment Systems	Technical Advisory Policy Change
03-10	8/07/03	Environmental Permits	Technical Advisory
03-09	7/11/03	Hot Mix Asphalt (HMA) Mixtures	Technical Advisory
03-08	7/02/03	Interstate Highway Lane Closures	Technical Advisory Policy Change
03-07	7/02/03	Policy for Context Sensitive Solution	Technical Advisory Policy Change
03-02	03/05/03	Design Guidelines for Three-Sided Drainage Structures	Technical Advisory <a href="#">RSP 723-R-282</a> <a href="#">RSP 723-R-282</a>
01-14	12/10/01	Water Main and Sanitary Sewer Construction in Contracts	Technical Advisory

October 2, 2003

DESIGN MEMORANDUM No. 03-16  
POLICY CHANGE

TO: All Design, Operations, and District Personnel, and Consultants

FROM: */s/ Anthony L. Uremovich*  
Anthony L. Uremovich  
Design Policy Engineer  
Contracts and Construction Division

SUBJECT: Pavement Milling

EFFECTIVE: October 21, 2003, Letting

The design considerations for pavement milling have been changed as described in Design Memorandum No. 03-16 Technical Advisory. There are now five milling methods.

[F:\Dev\Signed\0316-pc.doc]

October 2, 2003

DESIGN MEMORANDUM No. 03-16  
TECHNICAL ADVISORY

TO: All Design, Operations, and District Personnel, and Consultants

FROM: /s/ Anthony L. Uremowich  
Anthony L. Uremowich  
Design Policy Engineer  
Contracts and Construction Division

SUBJECT: Pavement Milling

COMPLEMENTS: *Indiana Design Manual* Section 52-7.0

SUPERSEDES: *Indiana Design Manual* Section 56-4.04(09)

EFFECTIVE: October 21, 2003, Letting

The new design requirements for each type of pavement milling work are as follows.

I. Additions to *Indiana Design Manual* Chapter Fifty-two

Section 52-7.05 is a new section to be added as follows.

52-7.05 Milling of Pavements

An asphalt or concrete pavement may be milled to remove distressed layers or material, make crown corrections, maintain curb heights or vertical clearances, scarify existing surfaces, profile existing surfaces, remove asphalt overlays, or provide pavement transitions in accordance with Recurring Special Provision 306-R-463, attached hereto. The five types of milling of pavements and their general uses are as follows.

## *PC and TA Access*

- *Construction and Design Reference Guide CD*

*PCs and TAs are not accessible through this medium.*

## *7. SPECIAL PROVISIONS*

### *Special Provisions*

- *Special provisions are specifications which are intended to apply to a specific contract. They could also be called, but they ordinarily are not called, "contract-specific specifications."*

### *Special Provisions*

- *Special provisions should not be used as a mechanism for introducing a new concept, piece or manner of work, or pay item for the purpose of averting due Standards Committee consideration of such.*

### *Types of Special Provisions*

- *Recurring Special Provision which can, and usually does, stand without modification for a specific contract*
- *Recurring Special Provision which cannot stand without modification*
- *Unique Special Provision*

## Recurring Special Provisions

- These are standard documents which may be accessed both from the website and CD.
- Maintained by the Department's specifications manager.

## Recurring Special Provisions

### Access Via Website

#### Domain:

[www.in.gov/dot/dlv/contracts/standards/rsp/index.html](http://www.in.gov/dot/dlv/contracts/standards/rsp/index.html)

#### Instructions:

1. Click on edition showing desired effective date
2. Under File Name and Size, click on desired "even hundred" file, e.g. Sec600.exe
3. Get File Download box
4. Click on Open
5. Note that Unzip to Folder box identifies document as saved to C:\ drive

## Standards and Specifications

- [Standard Drawings](#)
- [Standard Specifications with Supplementals](#)
- [Recurring Special Provisions](#)
- [Design Policy, Design Manual and More....](#)
- [Latest Updates](#)
- [Standards Committee Agenda & Minutes](#)

## Recurring Special Provisions

- [September 2004 Edition](#)  
Effective On or After September 1, 2004
- [March 2004 Edition](#)  
Effective On or After March 1, 2004
- [September 2003 REVISED Edition \(Updated June 23, 2003\)](#)  
Effective On or After September 1, 2003
- [September 2003 Edition](#)  
Effective On or After September 1, 2003
- [March 2003 Edition](#)  
Effective On or After March 1, 2003
- [September 2002 Edition \(Updated June 27, 2002\)](#)  
Effective On or After September 1, 2002

**Recurring Special Provisions**  
March 1, 2004 Edition

**Recurring Special Provisions Indexes**  
The following menus are now available in MS Excel format. Please read [helpful hint](#) for more information

File Title	MS Excel	Adobe .pdf
Recurring Special Provision Menu	RSP.Menu	RSP.Menu
Recurring Plan Details Menu	RPD.Menu	RPD.Menu

**Recurring Special Provisions Main Files**

File Title	Adobe .pdf	MS Word
Changes	Changes	Changes
Basis	Basis	Basis
Title	Title	Title
How to Use	How	How
New & Revised Special Provisions	801-R-030 802-T-144	801-R-030 802-T-144

**Recurring Special Provisions**  
(All sections including the new and updated)

Sections and Titles	File Name and Size	Default Directory
Section 100 General Provisions	Sec100.exe (2,474 k)	c:\rsp2004m\100\
Section 200 Earthwork	Sec200.exe (1,117k)	c:\rsp2004m\200\
Section 300 Bases	Sec300.exe (92k)	c:\rsp2004m\300\
Section 400 Bituminous Pavements	Sec400.exe (135k)	c:\rsp2004m\400\
Section 500 Rigid Pavements	Not in use	Not in use
Section 600 Incidental Construction	Sec600.exe (805k)	c:\rsp2004m\600\

**File Download**

Some files can harm your computer. If the file information below looks suspicious, or you do not fully trust the source, do not open or save this file.

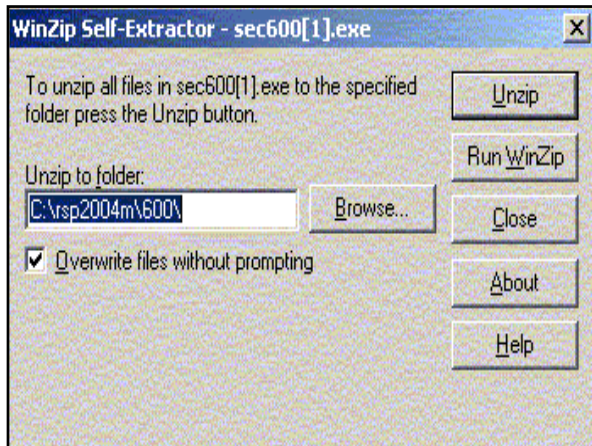
File name: sec600.exe  
File type: Application  
From: www.in.gov

⚠ This type of file could harm your computer if it contains malicious code.

Would you like to open the file or save it to your computer?

Always ask before opening this type of file



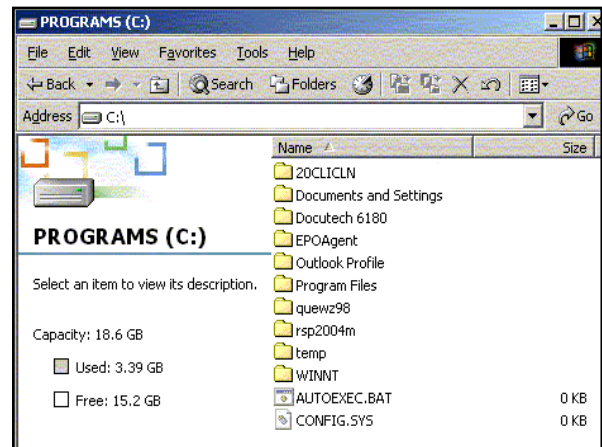
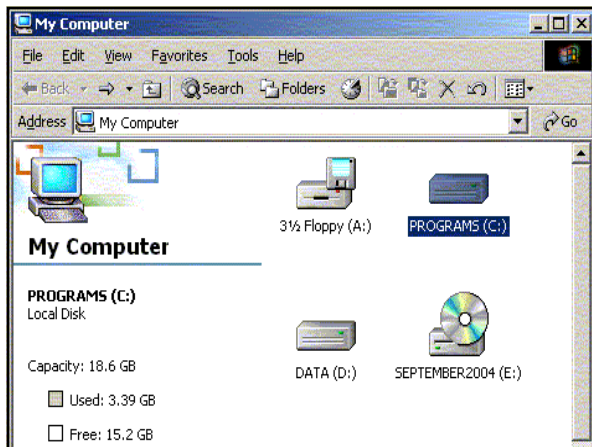


### Recurring Special Provisions

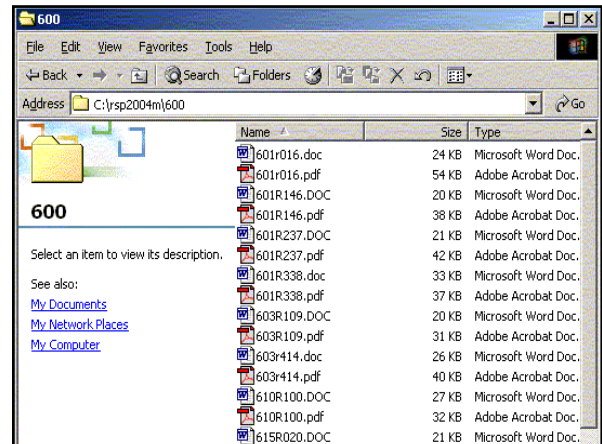
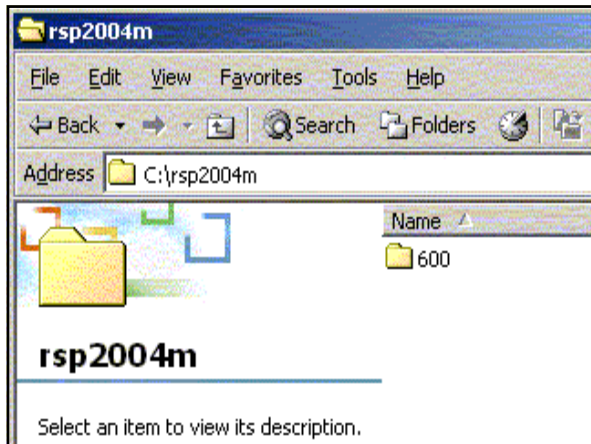
- **Instructions for Access Via Website**
- 6. Click Unzip
- 7. Get Winzip Self-Extractor box
- 8. Click OK
- 9. Click out of website or minimize it
- 10. On Desktop, click My Computer
- 11. Click on C:\ drive

### Recurring Special Provisions

- **Instructions for Access Via Website**
- 12. Note rspecyym subdirectory, e.g., rsp2004m, and click on it
- 13. Note the lone subdirectory named as desired even hundred, e.g., 600, and click on it
- 14. Click on PDF file of desired special provision code and view PDF version of provision text
- 15. May delete PDF file once finished with it
- 16. Yes, it's a hoop, but we're working on it.







REV. 1-4-99

SPARE PARTS PACKAGE FOR GUARDRAIL END TREATMENT

The Standard Specifications are revised as follows:

SECTION 601, AFTER LINE 123, INSERT AS FOLLOWS:  
*One spare parts package will be required as described herein for each type of guardrail end treatment specified. Such spare parts package shall correspond to that required for the selected alternate, if the specified guardrail end treatment type allows for alternate units. The spare parts package shall be delivered to the project site.*

*The spare parts package shall be in accordance with the replacement parts list for the selected alternate. Such list is available from the selected alternate guardrail end treatment manufacturer.*

SECTION 601, AFTER LINE 157, INSERT AS FOLLOWS:  
*The guardrail end treatment spare parts package will be measured per each for the type of guardrail end treatment for which it is specified.*

SECTION 601, AFTER LINE 167, INSERT AS FOLLOWS:  
*The guardrail end treatment spare parts package will be paid for at the contract unit price per each for the type of guardrail end treatment for which it is specified.*

SECTION 601, AFTER LINE 183, INSERT AS FOLLOWS:  
 Guardrail End Treatment, \_\_\_\_\_, Spare Parts Package ..... EACH  
 type

## Recurring Special Provisions

- **Codes**  
*Each RSP is assigned a code number, arranged as three numerals, a hyphen, one capital letter, a hyphen, and three numerals.*

## Recurring Special Provisions

- **Codes**  
*The first three digits represent the number of the Standard Specifications section where the provision would appear if it were a standard specification, e.g., 601.*

## Recurring Special Provisions

- **Codes**  
*The letter stands for the type of work which the provision is most often applied to, as follows:*  
 B – Bridges  
 C – Contracts in general  
 L – Land acquisition demolition  
 M – Maintenance  
 R – Roads  
 T – Traffic

## Recurring Special Provisions

- **Codes**

*The final three numerals are the serial number for each letter. For example, the first “R” provision was assigned 001, without regard to its Standard Specifications section number. The next, 002, and so on. Code 601-R-237 identifies the 237<sup>th</sup> “R” provision numbered, but not the 237<sup>th</sup> “609-R.”*

Rev. 1-4-99

SPARE PARTS PACKAGE FOR GUARDRAIL END TREATMENT

The Standard Specifications are revised as follows:

SECTION 601, AFTER LINE 123, INSERT AS FOLLOWS:  
*One spare parts package will be required as described herein for each type of guardrail end treatment specified. Such spare parts package shall correspond to that required for the selected alternate, if the specified guardrail end treatment type allows for alternate units. The spare parts package shall be delivered to the project site.*

*The spare parts package shall be in accordance with the replacement parts list for the selected alternate. Such list is available from the selected alternate guardrail end treatment manufacturer.*

SECTION 601, AFTER LINE 157, INSERT AS FOLLOWS:  
*The guardrail end treatment spare parts package will be measured per each for the type of guardrail end treatment for which it is specified.*

SECTION 601, AFTER LINE 167, INSERT AS FOLLOWS:  
*The guardrail end treatment spare parts package will be paid for at the contract unit price per each for the type of guardrail end treatment for which it is specified.*

SECTION 601, AFTER LINE 183, INSERT AS FOLLOWS:  
Guardrail End Treatment, \_\_\_\_\_ Spare Parts Package..... EACH  
type

## Recurring Special Provisions

- *The only RSPs approved as such by the Standards Committee are those pending incorporation into the Standard Specifications in the next website update or CD issuance, provided the Committee decided to make the specification requirement effective ahead of that time.*

## Recurring Special Provisions

- *Most other RSPs which can be placed without modification into a contract set are worthy of consideration by the Standards Committee to become standard specifications. It just hasn't happened yet.*

## Recurring Plan Details

- *These are standardized plan details which have been approved by the Standards Committee which do not currently appear on standard drawings.*
- *They are pending incorporation into the Standard Drawings in the next website update or CD issuance, provided the Committee decided to make the requirement for such details effective ahead of that time.*

## Recurring Plan Details

- *Like many RSPs, most other RPDs which can be placed into contract plans are worthy of consideration by the Standards Committee to become standard drawings. It just hasn't happened yet.*

## Recurring Plan Details

- RPD code numbers are modeled after those for RSPs. The number for a RPD is followed by a lower case “d,” for “detail,” e.g., 609-R-443d.
- Some RPDs have accompanying RSPs, which would have the same code number but without the “d;” the others do not.

## Recurring Plan Details

- **How to Access Them**

### Website:

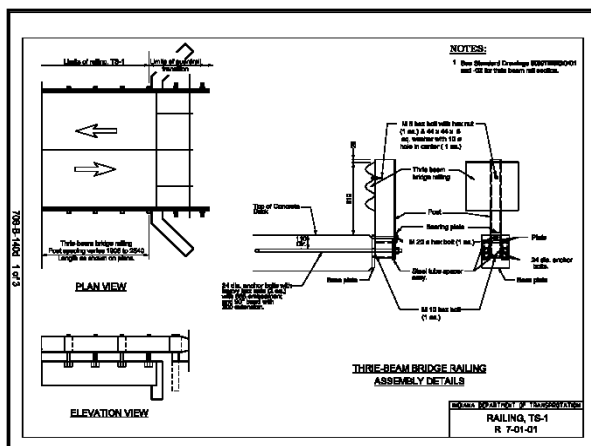
1. Go to same domain as that for RSPs.
2. Scroll to Recurring Plan Details table.
3. Click on desired code number in Drawings column to see a PDF version of the desired RPD.

## Recurring Special Provisions

- [September 2004 Edition](#)  
Effective On or After September 1, 2004
- [March 2004 Edition](#)  
Effective On or After March 1, 2004
- [September 2003 REVISED Edition \(Updated June 23, 2003\)](#)  
Effective On or After September 1, 2003
- [September 2003 Edition](#)  
Effective On or After September 1, 2003
- [March 2003 Edition](#)  
Effective On or After March 1, 2003
- [September 2002 Edition \(Updated June 27, 2002\)](#)  
Effective On or After September 1, 2002

## Recurring Plan Drawings (Adobe pdf)

Drawings	File Name	# of Drawings
<a href="#">107-C-169d</a>	Traffic Control Device Report Form	1 Form
<a href="#">602-T-388d</a>	Concrete Barrier	5 Metric, 5 English
<a href="#">610-M-008d</a>	Typical Approach Details	1 Sheet
<a href="#">701-B-101d</a>	Pile Driving and Equipment Data Form	1 Form
<a href="#">706-B-140d</a>	Bridge Railing Type TS-1 & Guardrail Transition TGS-1	3 Metric, 3 English
<a href="#">718-R-397d</a>	Outlet Protectors Type 2 & 3 Precast Alternative	2 Metric, 2 English
<a href="#">724-B-131d</a>	Typical Polymer Modified Asphalt Joint System	1 Sheet
<a href="#">724-B-147d</a>	Alternate SS Joint	2 Metric, 2 English
<a href="#">805-T-038d</a>	Loop Tagging System	1 Sheet
<a href="#">805-T-039d</a>	Loop Testing Table	1 Sheet



## Recurring Plan Details

- **How to Access Them**

### CD:

1. In the CD Publications menu, under Contract Documents, click on Recurring Special Provisions with Recurring Drawings.
2. Click on effective letting month, e.g., March 2004.
3. Under Recurring Special Provisions, click on Recurring Plan Details.
4. In the Recurring Plan Details Menu, in the Code column, click on the desired code number to see a PDF version of the desired drawing.

**Contract Documents**

Specifications Book  
with Supplement  
**New updates**

Standard Drawings  
English / Metric  
**New updates**

Recurring Special Provisions  
with Recurring Drawings  
**New updates**

**Recurring Special Provisions**

The recurring special provisions used on the last CD (September 2003) were revised after distribution. The new March 2004 and Revised September 2003 editions of the RSP's have been included on this CD. Please choose the appropriate edition.

**September 2003 REVISED**

**March 2004**

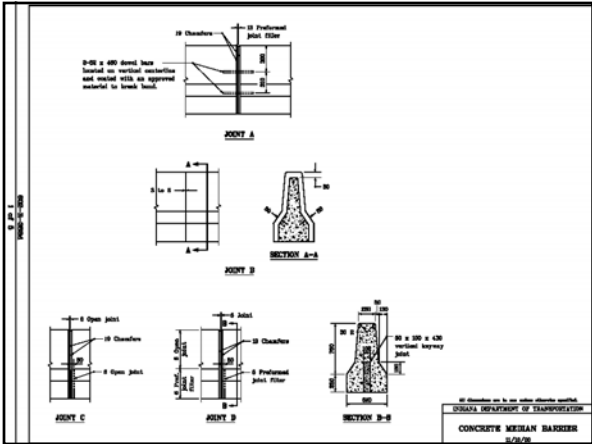
- Recurring Special Provisions**
- ▶ section 100 General Provisions
  - ▶ section 200 Earthwork
  - ▶ section 300 Aggregate Pavement and Bases
  - ▶ section 400 Asphalt Pavements
  - ▶ section 500 Concrete Pavements
  - ▶ section 600 Incidental Construction
  - ▶ section 700 Structures
  - ▶ section 800 Traffic Control Devices and Lighting
  - ▶ section 900 Materials Details
  - ▶ Recurring Plan Details

Edition of 3-01-04

Contract \_\_\_\_\_ District \_\_\_\_\_

RECURRING PLAN DETAILS MENU

Place In Contract	Code	Description
	107-C-169d	Traffic Control Device Report Form
	602-T-388d	Concrete Barrier
	610-M-008d	Typical Approach Details
	701-B-101d	Pile Driving and Equipment Data Form
	706-B-140d	Bridge Railing Type TS-1 & Guardrail Transition TGS-1
	718-R-397d	Outlet Protectors Type 2 & 3 Precast Alternative
	724-B-131d	Typical Polymer Modified Asphalt Joint System
	724-B-147d	Alternate SS Joint
	805-T-038d	Loop Tagging System
	805-T-039d	Loop Testing Table



**Unique Special Provisions**

- A unique special provision is one which must be developed by the designer only for a type of work which the Department has never done.
- It is used for only one contract.
- The designer should note that such work may have been done in the past in a slightly different manner, which may be standardized. A unique provision would therefore be unnecessary.

### *Unique Special Provisions*

- *If a unique provision is still required, it must address all 5 ways to specify, described earlier as work description, materials requirements, construction requirements, method of measurement, and basis of payment, in this order.*
- *Work aspects which are already included in Standard Specifications that apply, should be referred to, only by the section number. For example, “\_\_\_\_\_ shall be in accordance with 610.03.”*

### *Unique Special Provisions*

- *Work aspects which are already included in Recurring Special Provisions that apply, should not be referred to. Instead, such provisions should be incorporated into the contract set.*

## *8. PAY ITEMS*

### *Pay Items*

- *For the purpose of contract administration, each pay item must have a code number. The number consists of 3 digits, a hyphen, then 5 digits. The first three digits correspond to its complementary Standard Specifications section number. The last five digits are a serial number in a series of all pay items assigned a number.*
- *For example, 609-10380 is for a pay item in Standard Specifications Section 609, and is the 10,380<sup>th</sup> pay item numbered by the Department. It is not Section 609’s 10,380<sup>th</sup> numbered pay item.*

### *Pay Items*

- *If a unique pay item appears to be required, the designer must contact the Contracts and Construction Divisions’ Contracts Section for a number.*
- *The Section will determine whether a new number is necessary. A new number is unnecessary if one of the situations exist as follows:*

### *Pay Items*

- *New Number Unnecessary:  
The proposed wording closely resembles that for an existing pay item.*

*Example*

*Existing: Pipe, Type 4, Circular, 24 in.  
Proposed: Pipe, Circular, 24 in., Type 4  
Proposed: Pipe, Type 4, Round, 24”*



## Pay Items

- **New Number Unnecessary:**  
The proposal may be addressed with a supplemental description. Common pay item names with different supplemental descriptions all carry the same pay item number.

### Examples:

Existing: Houses and Buildings, Remove, Parcel No. 3  
Proposed: Houses and Buildings, Remove, Parcel No. 3C

Existing: Guardrail, W-Beam, 1.905 m Spacing  
Proposed: Guardrail, W-Beam, 1.905 m Spacing, Modified

## Pay Items

### Pay Items Lists Access

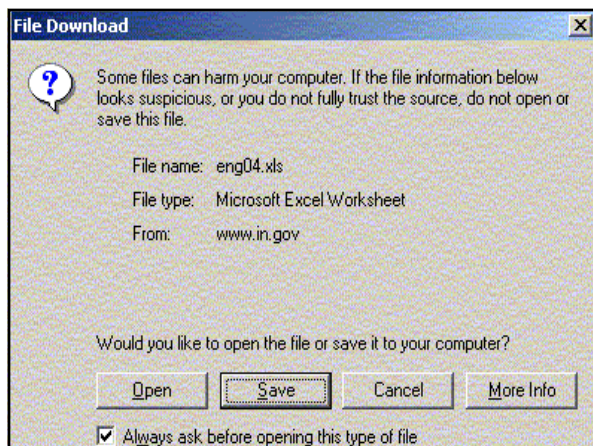
#### Website:

1. The domain is as follows:  
[www.in.gov/roads/contracts/pay/](http://www.in.gov/roads/contracts/pay/)
2. For the desired effective date, click on Metric Pay Items List or English Pay Items List, as desired
3. Get File Download box, click on Open
4. Get Excel file with items arranged by Standard Specifications section, then serially within each section.

- Bid Tabulations
  - Pay Item List

March 2004 (updated 10/24/03)

- For Contracts on or after March 1, 2004
  - [Metric Pay Items List](#) (MS Excel)
  - [English pay Items List](#) (MS Excel)
- Update the Item Catalog in Estimator (High Est.)
  - [Item Met.csv](#) (Metric)
  - [Item Eng.csv](#) (English)



A	B	C	D
1767	713-2075	TEMPORARY PSE, GROUP A, 3.04 IN, 40 IN	LFT
1768	713-2465	TEMPORARY BRIDGE	LS
1769	713-2720	TEMPORARY STRUCTURE AND APPROACHES	LS
1770	713-3134	TEMPORARY PSE AND APPROACHES	LS
1771	713-3135	TEMPORARY BRIDGE AND APPROACHES	LS
1772	713-3132	TEMPORARY SUPPORT	LS
1773	713-3128	TEMPORARY RUMBLE	LS
1774	713-3023	GUARDRAIL END TREATMENT (1), TEMPORARY BRIDGE APPROACHES	EACH
1775	713-3148	TEMPORARY RAMP	EACH
1776	713-3036	GUARDRAIL, W-BEAM, 4 FT 3 IN SPACING, TEMPORARY BRIDGE	APPROACHES
1777	714-0190	CL-VERT, PRECAST BOX, REINFORCED CONCRETE, 7 FT X 6 FT	LFT
1778	714-0189	CL-VERT, PRECAST BOX, REINFORCED CONCRETE, 7 FT X 5 FT	LFT
1779	714-0186	CL-VERT, PRECAST BOX, REINFORCED CONCRETE, 10 FT X 4 FT	LFT
1780	714-0183	CL-VERT, PRECAST BOX, REINFORCED CONCRETE, 9 FT X 5 FT	LFT
1781	714-0184	CL-VERT, PRECAST BOX, REINFORCED CONCRETE, 7 FT X 4 FT	LFT
1782	714-0184	CL-VERT, PRECAST BOX, REINFORCED CONCRETE, 7 FT X 5 FT	LFT
1783	714-0242	CL-VERT, PRECAST ARCH, 13.00 IN, REINFORCED CONCRETE,	20 FT 0 IN X 8 FT 0 IN
1784	714-0244	VERTICAL, PRECAST CONCRETE	EACH
1785	714-0204	CL-VERT EXTENSION, PRECAST BOX, REINFORCED CONCRETE,	8 FT X 3 FT
1786	714-0207	CL-VERT, PRECAST BOX, REINFORCED CONCRETE, 4 FT X 4 FT	LFT
1787	714-0208	CL-VERT, PRECAST BOX, REINFORCED CONCRETE, 6 FT X 6 FT	LFT
1788	714-0201	CL-VERT, PRECAST BOX, REINFORCED CONCRETE, 12 FT X 3 FT	LFT
1789	714-0209	CL-VERT, PRECAST BOX, REINFORCED CONCRETE, 9 FT X 6 FT	LFT
1790	714-0206	CL-VERT, PRECAST BOX, REINFORCED CONCRETE, 12 FT X 12 FT	LFT
1791	714-0283	VERTICAL, LIMESTONE	EACH
1792	714-0454	CL-VERT, PRECAST BOX, REINFORCED CONCRETE, 3 FT X 3 FT	LFT
1793	714-0476	CL-VERT, PRECAST BOX, REINFORCED CONCRETE, 6 FT X 5 FT 6 IN	LFT
1794	714-0463	TEMPORARY TIE BACK, RETAINING WALL	LFT
1795	714-0461	CL-VERT, PRECAST BOX, REINFORCED CONCRETE, 11 FT X 6 FT	LFT
1796	714-0460	CL-VERT, PRECAST 3 BEAM, REINFORCED CONCRETE	20 FT X 10 FT
1797	714-0462	CONCRETE MODULAR BLOCK WALL	TYPE
1798	714-0464	CL-VERT, PRECAST BOX, REINFORCED CONCRETE, 7 FT X 3 FT	LFT
1799	714-0570	CL-VERT, PRECAST BOX, REINFORCED CONCRETE, 12 FT X 3 FT	LFT
1800	714-0576	CL-VERT, PRECAST BOX, REINFORCED CONCRETE, 14 FT X 6 FT	LFT
1801	714-0656	CL-VERT, PRECAST BOX, REINFORCED CONCRETE, 11 FT X 4 FT	LFT
1802	714-0671	CL-VERT, PRECAST BOX, REINFORCED CONCRETE, 10 FT X 4 FT	LFT
1803	714-0672	CL-VERT, PRECAST BOX, REINFORCED CONCRETE, 14 FT X 4 FT	LFT
1804	714-0677	CL-VERT, PRECAST BOX, REINFORCED CONCRETE, 14 FT X 6 FT	LFT
1805	714-0678	CL-VERT, PRECAST BOX, REINFORCED CONCRETE, 9 FT X 4 FT	LFT
1806	714-0679	CL-VERT, PRECAST BOX, REINFORCED CONCRETE, 6 FT X 3 FT	LFT
1807	714-0678	CL-VERT, PRECAST BOX, REINFORCED CONCRETE, 14 FT X 5 FT	LFT



## Pay Items

- **Pay Items Lists Access**

CD:

1. In CD Publications menu, under Pay Items, click on Pay Item List English / Metric
2. Get Pay Items menu, click on Metric Pay Items List or English Pay Items List as desired
3. Get Launch C:\Program Files.... box, click on Open
4. Get Excel file Item\_met.xls or Item\_eng.xls. Items are arranged by Standard Specifications section, then serially within each section.

## Pay Items

### Unit Price Averages

### Pay Items Lists English / Metric

# Pay Items

Be Sure to check the internet for the latest updates !

[Unit Price Averages \(Metric and English\)](#)

[Metric Pay Item List \(Microsoft Excel File\)](#)

[English Pay Items List \(Microsoft Excel File\)](#)

Launch: C:\Program Files\Microsoft Office\Office10\EXCEL.EXE



The file "C:\Program Files\Microsoft Office\Office10\EXCEL.EXE" is set to be launched by this PDF file. The file may contain programs, macros, or viruses that could potentially harm your computer. Only open the file if you are sure it is safe. If this file was placed by a trusted person or program then click Open to view the file.

Do not show this message again:

Open

Do Not Open

	A	B	C	D
1930	600	604-06000	SIDEWALK, CONCRETE, RECONSTRUCTED	SYS
1939	600	604-06367	JOINT MATERIAL	LFT
1940	600	604-06788	CROSSWALK	SYS
1941	600	604-06829	BRICK	SFT
1942	600	604-06844	BRICK	SFT
1943	600	604-07002	BED COURSE MATERIAL	TON
1944	600	604-07483	HMA FOR SIDEWALK	TON
1945	600	604-07569	PAVERS	SYS
1946	600	604-07923	STAMPED CONCRETE SIDEWALK	SYS
1947	600	604-44251	STEPS, CONCRETE	CYS
1948	600	604-90256	SIDEWALK, CONCRETE, 6 IN	SYS
1949	600	604-91404	SIDEWALK, CONCRETE, 5 IN	SYS
1950	600	604-91531	SIDEWALK, CONCRETE, 4 IN	SYS
1951	600	604-93490	SIDEWALK, BRICK	SYS
1952	600	604-94948	SIDEWALK PATCHING, PARTIAL DEPTH	SFT
1953	600	604-95531	BRIDGE, PEDESTRIAN	LS
1954	600	605-01870	CURB, CONCRETE, A	LFT
1955	600	605-01943	CURB, ADJUSTED TO GRADE	LFT
1956	600	605-02154	CONCRETE CURB AND FOOTING	CYS
1957	600	605-02492	CURB AND BASE, INTEGRAL, CONCRETE	LFT
1958	600	605-02493	GUTTER, CONCRETE, A DRIVES	LFT
1959	600	605-02493	CURB ISLAND, CONCRETE	SYS
1960	600	605-02509	CURB, PRECAST, CONCRETE, RESET	LFT
1961	600	605-03647	CURB, GRANITE	LFT
1962	600	605-03652	CURB, LIMESTONE	LFT
1963	600	605-03656	CURB, CONCRETE, REPAIR	LFT
1964	600	605-03657	CURB BAND, CONCRETE	LFT
1965	600	605-04510	LIP, GUTTER	LFT
1966	600	605-04742	WALL	LS
1967	600	605-05523	CURB, HMA	LFT
1968	600	605-05524	CENTER CURB, A, HMA	LFT
1969	600	605-05525	CENTER CURB, B, HMA	LFT
1970	600	605-05526	HMA FOR CENTER CURB	SYS
1971	600	605-06090	CURB, INTEGRAL, CONCRETE	LFT
1972	600	605-06095	CURB, INTEGRAL, B, CONCRETE	LFT
1973	600	605-06100	CURB, INTEGRAL, C, CONCRETE	LFT
1974	600	605-06105	CURB, INTEGRAL, CONCRETE, MODIFIED	LFT
1975	600	605-06115	CURB, INTEGRAL, C, CONCRETE, MODIFIED	LFT
1976	600	605-06120	CURB, CONCRETE	LFT
1977	600	605-06121	CURB, CONCRETE, B	LFT
1978	600	605-06125	CURB, CONCRETE, MODIFIED	LFT
1979	600	605-06140	CURB AND GUTTER, CONCRETE	LFT
1980	600	605-06149	CURB AND GUTTER, CONCRETE	LFT

## Pay Items

- **Determining Pay Item Name**

1. Pay item names are worded from least specific description to most specific description. Required descriptions are set off by commas.

Example:

Standard – QC/QA-HMA, 4, 64, Surface 9.5 mm

Poor – 9.5 mm Surface, 64, 4, HMA, QC/QA

2. Pay items that require supplemental descriptions are those that require structure numbers, parcel numbers, etc., in their names.

## ***Pay Items***

- *Considerations When Requesting a Code Number*
- 1. *Check the Standard Specifications and Recurring Special Provisions for the latest effective letting date to determine if the pay item name is already formatted in a standard manner.*
- 2. *Check the Pay Items List to determine if the pay item description already exists, possibly worded differently.*
- 3. *Check related Technical Advisory documents to determine if the pay item description has been added since the last website and CD updates.*

## ***Pay Items***

- ***Procedure for Obtaining a Code Number***
- 1. *If the proposed pay item name appears genuinely new, it must be submitted to the Contracts and Construction Division's Contracts Section's senior systems analyst.*
- 2. *The submission must include three copies of its complementary unique special provision, the proposed pay item name wording, its complementary Standard Specifications section number, and both english and metric pay units.*

## ***Pay Items***

- ***Procedure for Obtaining a Code Number***
- 3. *If the analyst determines that a new number should be assigned, he or she may reword the item name to be in accordance with standard practice, or*
- 4. *The analyst may determine that a new number is unwarranted.*

## ***Pay Items***

- ***Procedure for Obtaining a Code Number***
- 5. *The analyst will provide the new number and possible rewording, or, if no new number is warranted, the existing code number and pay item name to be used.*
- 6. *The analyst's determination is final. The designer must use the code number and wording provided.*

## ***INDOT Website Domains***

- ***Standard Specifications:***  
[www.in.gov/dot/div/contracts/standards/book/index.html](http://www.in.gov/dot/div/contracts/standards/book/index.html)
- ***Standard Drawings:***  
[www.in.gov/dot/div/contracts/standards/drawings/index.html](http://www.in.gov/dot/div/contracts/standards/drawings/index.html)
- ***Design Manual:***  
[www.in.gov/dot/div/contracts/standards/dm](http://www.in.gov/dot/div/contracts/standards/dm)
- ***Standards Committee:***  
[www.in.gov/dot/div/contracts/standards/sc](http://www.in.gov/dot/div/contracts/standards/sc)
- ***Design Policy Changes and Technical Advisories:***  
[www.in.gov/dot/div/contracts/standards/memos/index.html](http://www.in.gov/dot/div/contracts/standards/memos/index.html)
- ***Pay Item Lists:***  
[www.in.gov/dot/div/contracts/pay/](http://www.in.gov/dot/div/contracts/pay/)

***THIS CONCLUDES  
THE SESSION.***

***ANY FURTHER QUESTIONS  
??????***

*LADIES AND GENTLEMEN,  
THIS ROAD SCHOOL  
IS COMPLETED.  
GOODNIGHT, IRENE.*

*Please Drive Carefully.*