

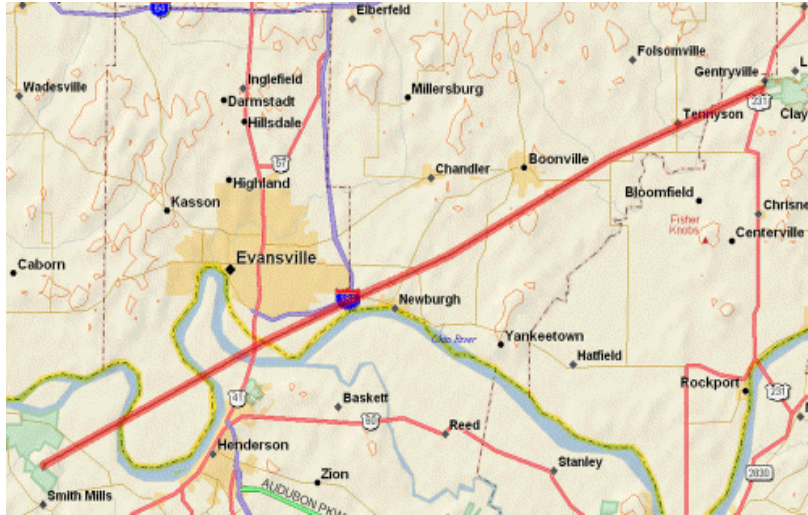
## Nov. 6<sup>th</sup> Tornado



## Nov. 6<sup>th</sup> Tornado

- F-3 Tornado - Severe  
Tornado....Winds Of 158-206 Mph
- Start Time 01:50 In Henderson Ky.
- Peak Wind 200mph
- Path Length – Approx. 41 Miles
- Max. Width - 400+ Yards

## Nov. 6<sup>th</sup> Tornado Path



## NOTIFICATION

- Central Dispatch called that 2:15 A.M.
- Things that I had to ask myself?
- Equipment needed?
- Manpower?
- Timescale?



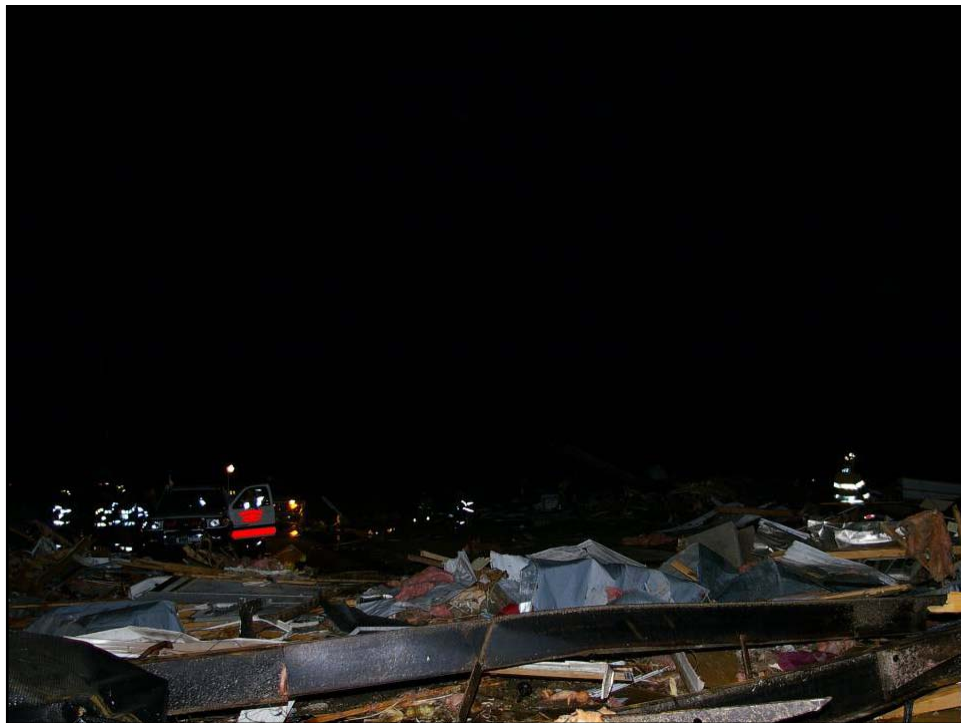
## Nov. 6<sup>th</sup> Tornado Path

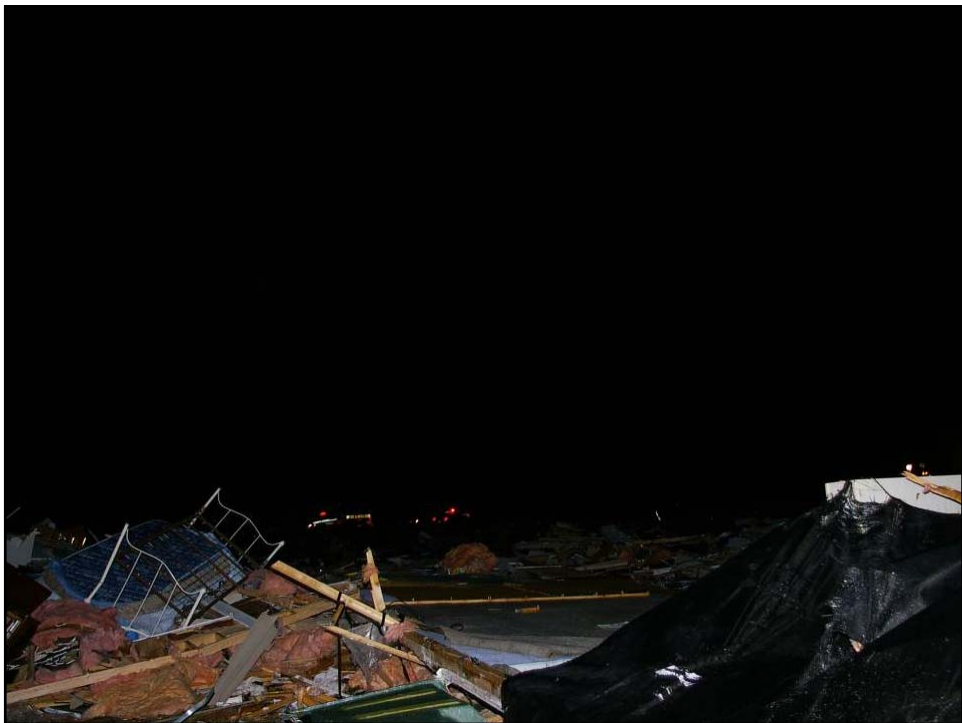


## RESOURCES

- What could the City and other local jurisdiction provide?
- What kind of state assistances would be available?
- What help would be available from the private sector?
- What kind of Special Needs assistances and equipment would we need?

**Darkness Provided A Misleading Perspective!**





# Facts

- 326 Mobile Home Lots
- 130 Destroyed
- 78 Transported To Hospitals
  - 40 Transported Within 37 Minutes
- 20 Fatalities



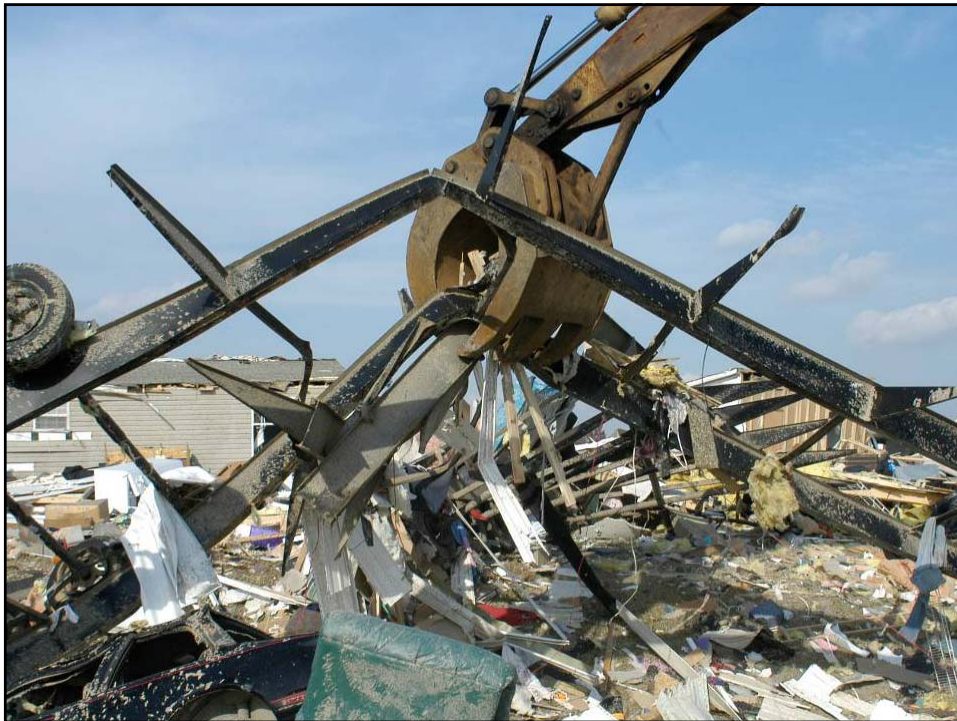
# Facts

- Deadliest Tornado in Indiana since: 1974
- Deadliest Tornado in NWS Paducah Forecast Area since: 1950
- Deadliest Tornado in the United States since: 1999

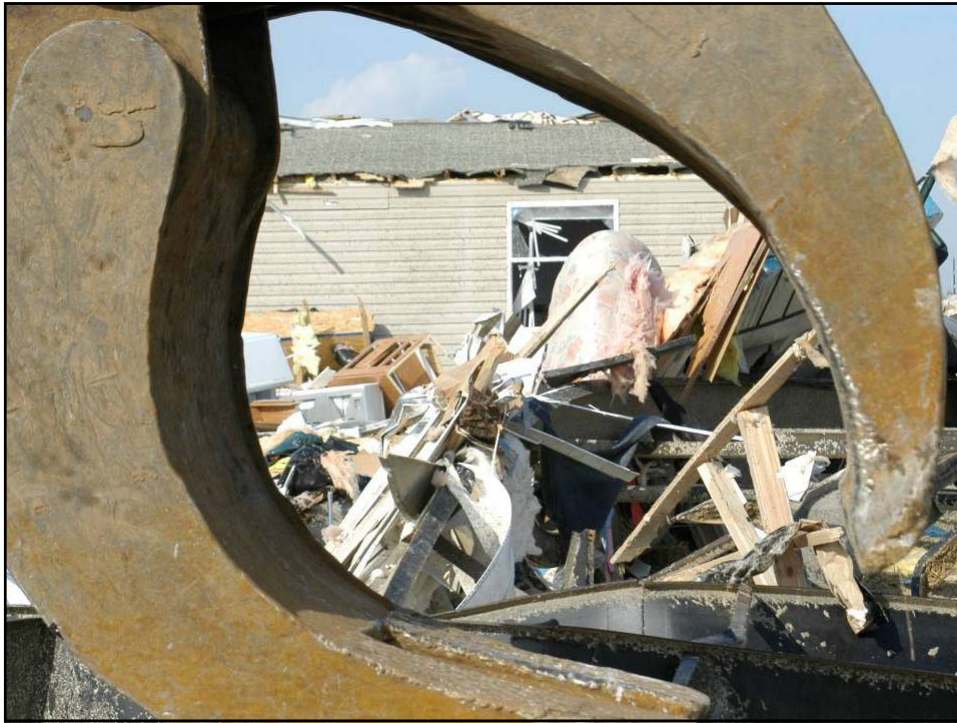




# Daylight – New Perspective!



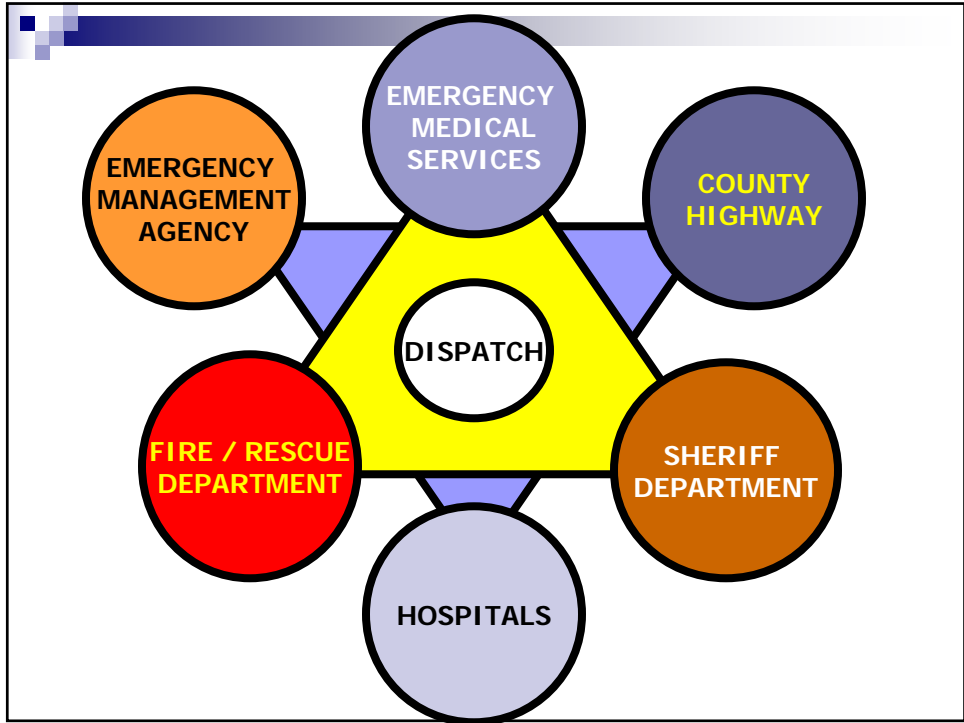




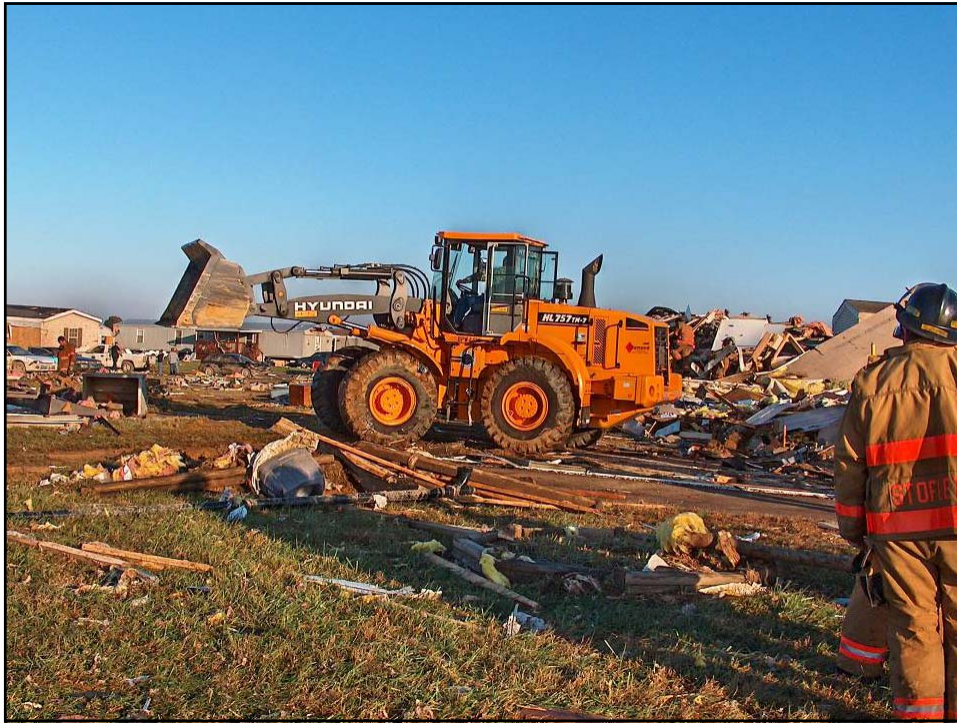
# Challenges

Streets Cleared of Debris









## WORKING TOGETHER WITH

- Other Agencies
- Turf















# SPECIAL CIRCUMSTANCES



# SPECIAL CIRCUMSTANCES



# Volunteers

- Make sure you have WAIVER signed by all
- Make sure they have proper equipment, i.e. gloves, eye protection, boots
- Food
- Water
- Break Areas
- Health Department

## LONG-TERM WORK BEGINS LOCAL ISSUES

- Activation of your Emergency Operation Center (EOC)
- STATE OF EMERGENCY
- Staffing
- Coordination with the First Responders
- Taking all kinds phone calls

## Coordinate Information between IDHS and Commissioners

- State of Emergency signed and fax to IDHS BY 5:30A.M.
- After the initial size up Incident Command requested High Skilled Help.
- Request for the National Guard
- Starting the SitReps

## Damage Assessment

- We need all the help we can gather.
- State wide we need 8 Mil.
- Public Assist / Individual Assist
- Ones you make the 8Mi.we break it down in to counties
- Not Cities and County only County

|



## Private Property

- First you have permission to clean up debris off Private Property.
- If the property owner takes the responsibility to clean the debris with his insurance coverage he then is responsible.
- If not the Bidding Starts
- You must follow the guidelines that FEMA give you.

## Taking care of your own!

- Work with your American Red Cross, Salvation Army, and Mental Health Organization,
- Not only the people that lost family members and homes may need stress debriefing we as responded need help!
- To reach the presentation on-line go to <http://www.vanderburghgov.org>, put your mouse over Government, then County, then click on County Highway. After that there will be a link to a page on the left side named Purdue Road School Presentation, then right click on the link and select save as.