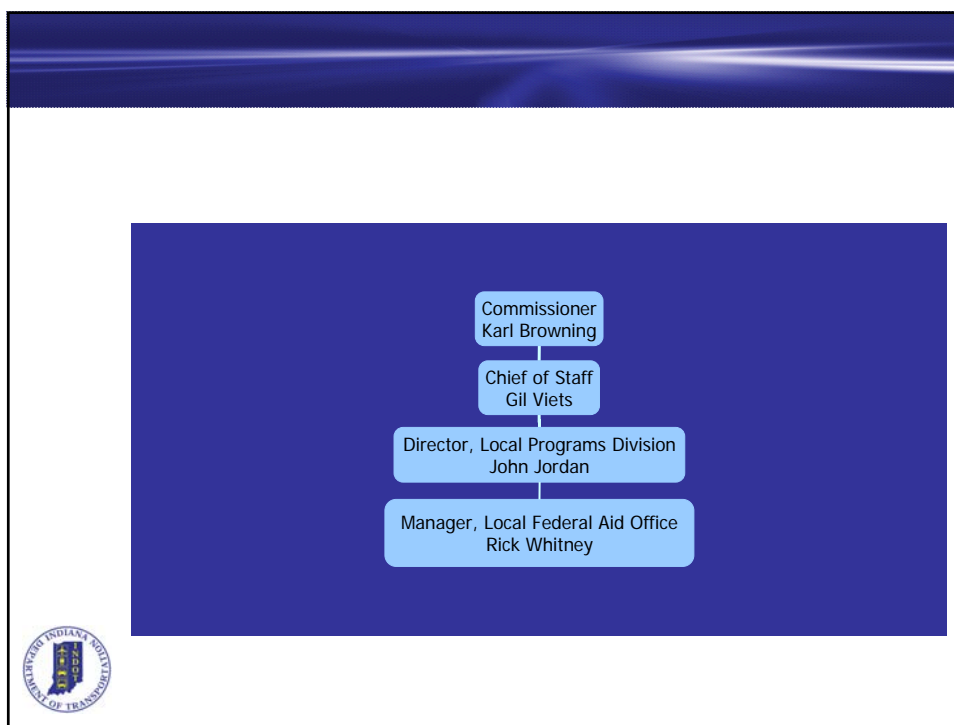
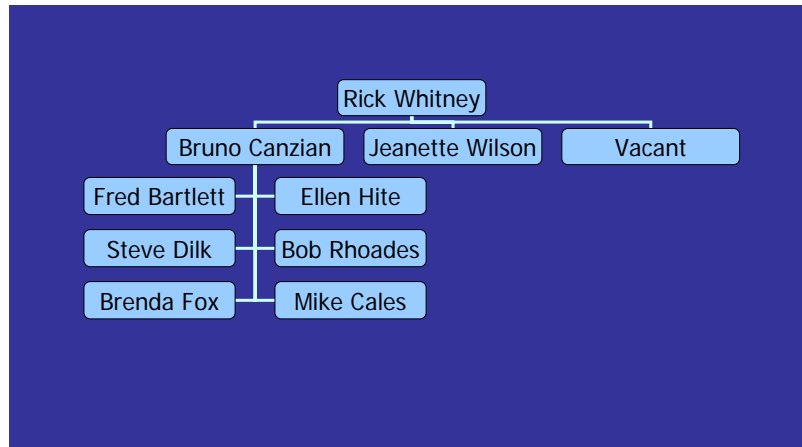




## Driving Indiana's Economic Growth



## Local Federal Aid Office



## INDOT Mission:

INDOT will plan, build, operate, and maintain a superior transportation system enhancing safety, mobility, and economic development.



## Local Public Agency Programs

### I. MPOs

A. Group I >200,000 population

B. Group II >50,000 < 200,000

### II. Local Programs Division

A. Group III >5,000 <50,000

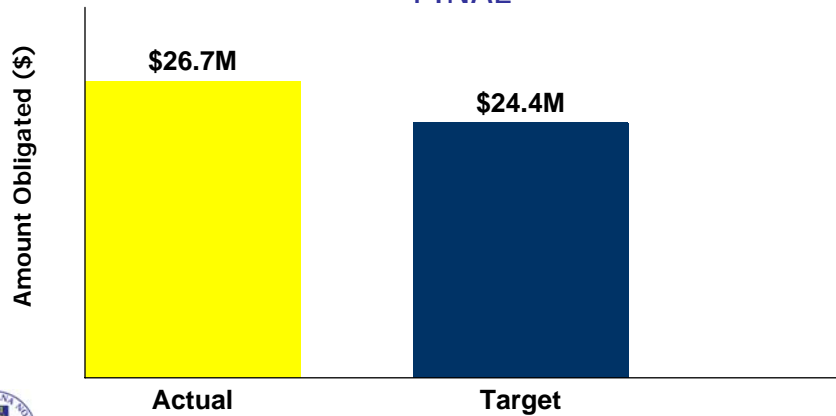
B. Group IV <5,000 and counties

C. Local Bridge

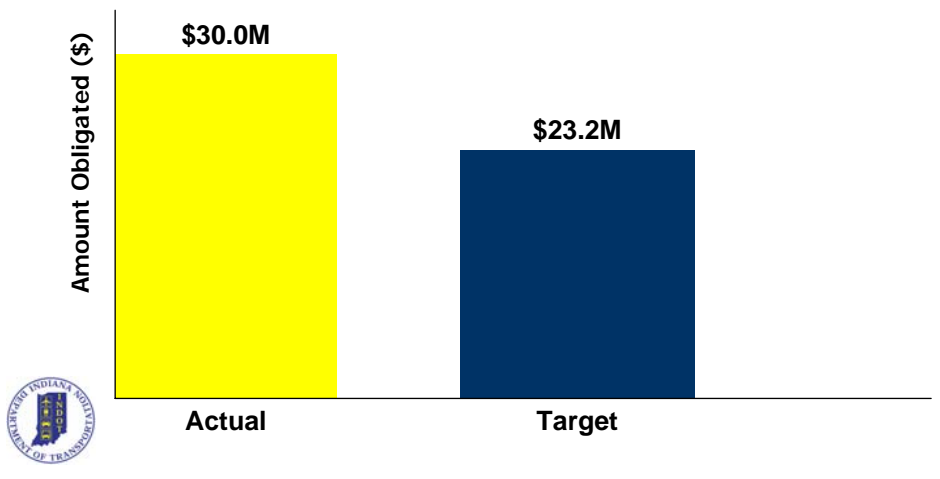
D. Transportation Enhancement



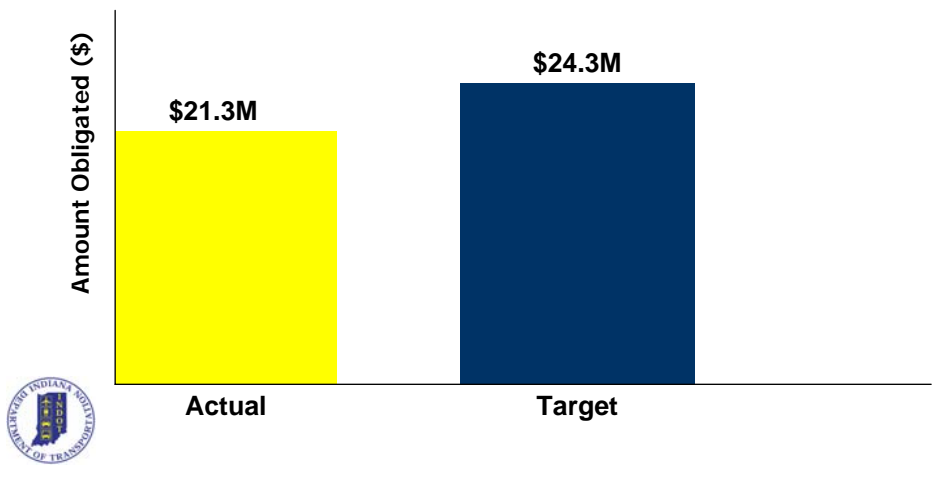
Federal Fiscal Year 2007 (10/1/06-9/30/07)  
Group III Program: Population: 5,000-50,000  
FINAL



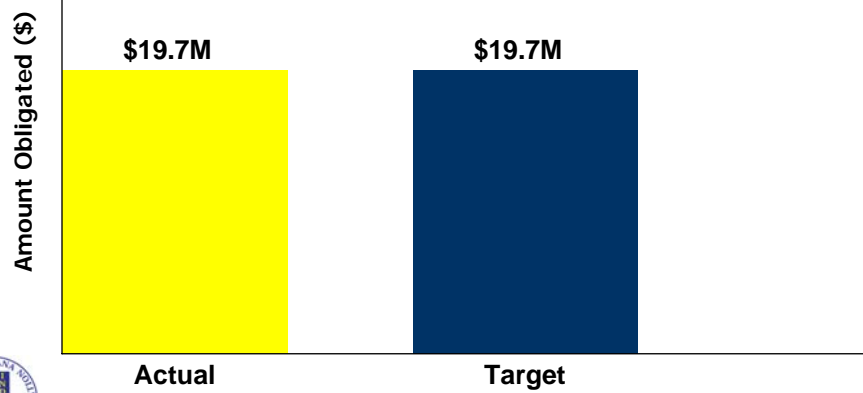
Federal Fiscal Year 2007 (10/1/06-9/30/07)  
Group IV Program: Population: < 5,000; plus Counties  
FINAL



Federal Fiscal Year 2007 (10/1/06-9/30/07)  
Local Bridge Program  
FINAL



Federal Fiscal Year 2007 (10/1/06-9/30/07)  
Local Transportation Enhancement Program  
FINAL



### Calls for Projects

Program	Applications	Federal Funds Requested	Number of Awards	Federal Funds Awarded
TE 2/07	122	\$100,000,000	29	\$22,656,652
Group III 9/07	40	\$111,000,000	18	\$25,070,000
Local Bridge 12/07	93	\$85,000,000	TBA	\$30,000,000



# Status of INDOT's Local Federal Aid Programs

March 25, 2008



## Summary of Pending LPA Projects March 25, 2008

Program	Federal Funds	Projects	Years of Inventory
Group III	\$94,000,000	53	3.8
Group IV	\$103,300,000	70	4.4
Local Bridge	\$82,400,000	89	3.4
Enhancements	\$124,400,000	162	6.5
TOTALS	\$404,100,000	374	N/A



## Policy Changes

### 1. Staggered calls for projects (tentative dates)

Program	Issue	Application Due	Announce Awards
Local Bridge	12/21/07	2/21/08	4/29/08
Group IV	3/20/08	5/21/08	7/29/08
Enhancement	6/20/08	8/21/08	10/29/08
Group III	9/22/08	11/24/08	1/29/09
Local Bridge	12/22/08		



## Policy Changes (continued)

2. Allocate federal funds for Group III and Group IV programs to districts based upon population of eligible LPAs.

Allocate federal funds for Local Bridge programs to districts based upon area of structurally deficient bridges in each district.



## Policy Changes (continued)

3. Selection process
  - a. Districts invite eligible LPAs to meetings and receive comments
  - b. Each district develops a preliminary list of projects to receive awards
  - c. Selection committee finalizes list of projects to receive awards



## Policy Changes (continued)

4. INDOT website
  - a. LPA Procedure
  - b. Inventory of projects for each program
  - c. List by project how money was spent for each program – update quarterly
  - d. FHWA list of eligible bridges
  - e. List of awards for each "Call for Projects"





## Policy Changes (continued)

5. Applications from LPAs that owe INDOT will not be considered.
6. Maximum award of federal funds to an LPA
  - a. Group III and Group IV - \$3,000,000
  - b. Bridge – Remove four bridge restriction



## Policy Changes (continued)

7. LPAs to submit a quarterly progress report (schedule and cost) for each project.

First report was due January 21, 2008 for the quarter that ended December 31, 2007.

The next report is due April 21, 2008 for the quarter ending March 31, 2008.



## Policy Changes (continued)

8. Increases on a case by case basis.

<b>Program</b>	<b>Award Contract Before</b>
Group III	7/15/08
Local Bridge	10/15/08
Group IV	1/15/09
Enhancement	4/15/09

Thereafter, all increases in allocation of federal funds will be handled through the "call" process.



## Policy Changes (continued)

9. An INDOT/LPA contract will be entered into for each project – new or existing. Each contract will contain:

- a. The amount of federal funds, including federal credits, allocated to the project.
- b. The window of opportunity.

10. INDOT will not advertise a contract for an LPA that owes INDOT money.



## COMING ATTRACTIONS

1. New INDOT – LPA contract
2. New FA-3 form (application for federal aid)
3. Electronic submission of quarterly reports



## ACEC LPA Review

1. ACEC met with INDOT on 2/1/08.
2. On 3/13/08, ACEC sent a survey to LPAs, MPOs, and consultants.
3. ACEC will make recommendations to INDOT during June 2008.



## Group III, Group IV, or Local Bridge Project Example

Design Fee	\$100,000
R/W	\$200,000
Construction	\$1,000,000
Inspection Fee	\$150,000
<b>TOTAL COST</b>	<b>\$1,450,000</b>



## Group III, Group IV, or Local Bridge Project Scenario 1

Federal funds, including credits, allocated to project    \$800,000

Federal credits ( lesser of A or B)

A. 80% ( 100,000 + 200,000) = \$ 240,000

B. 50% ( 1,000,000 + 150,000) 20% = \$115,000

Federal credits available    \$115,000

LPA will be billed for \$200,000 after bids are opened

(1,000,000 - 800,000) = 200,000

TOTAL LPA cost    \$650,000

\$1,450,000 - \$800,000 = \$650,000



### Group III, Group IV, or Local Bridge Project Scenario 2

Federal funds, including credits, allocated to project \$1,000,000  
 Federal credits available \$115,000

		Local	Fed Credit	Fed Funds
Design fee	100,000	100,000		
R/W	200,000	200,000		
Construction	1,000,000	100,000	100,000	800,000
Inspection fee	150,000	50,000	15,000	85,000
	1,450,000	450,000	115,000	885,000

LPA will be billed for \$100,000 after bids are opened  
 (1,000,000 - 800,000 - 100,000) = 100,000  
 TOTAL LPA Cost \$450,000



### Transportation Enhancement Project with Credits Example

Design Fee	\$100,000
R/W	\$200,000
Construction	\$1,000,000
Inspection Fee	\$150,000
<b>TOTAL COST</b>	<b>\$1,450,000</b>



**Transportation Enhancement Project with Credits Scenario 1**

Federal funds including credits, allocated to project \$800,000  
 Federal credits ( lesser of A or B)  
 A. 80% ( 100,000 + 200,000) = \$ 240,000  
 B. ( 1,000,000 + 150,000) 20% = \$230,000  
 Federal credits available \$230,000

		Local	Fed Credit	Fed Funds
Design fee	100,000	100,000		
R/W	200,000	200,000		
Construction	1,000,000	200,000	230,000	570,000
Inspection fee	150,000	150,000		
	1,450,000	650,000	230,000	570,000



LPA will be billed for \$200,000 after bids are opened  
 TOTAL LPA Cost \$650,000

**Transportation Enhancement Project with Credits Scenario 2**

Federal funds, including credits, allocated to project \$1,000,000  
 Federal credits available \$230,000

		Local	Fed Credit	Fed Funds
Design fee	100,000	100,000		
R/W	200,000	200,000		
Construction	1,000,000	0	230,000	770,000
Inspection fee	150,000	150,000		
	1,450,000	450,000	230,000	770,000



LPA bill for after bids are opened \$ 0  
 TOTAL LPA Cost \$450,000

## Transportation Enhancement Project with Credits Scenario 3

Federal funds, including credits, allocated to project \$1,200,000  
 Federal credits available \$230,000

		Local	Fed Credit	Fed Funds
Design fee	100,000	100,000		
R/W	200,000	200,000		
Construction	1,000,000		200,000	800,000
Inspection fee	150,000		30,000	120,000
	1,450,000	300,000	230,000	920,000



LPA bill for after bids are opened \$ 0  
 TOTAL LPA Cost \$300,000

## Distressed Road Fund

1. 10 year interest free loans
2. 2 year interest free loans



## Eligible for 10 year Interest Free Loans Eligible Counties

1. Crawford
2. Daviess
3. Dubois
4. Gibson
5. Martin
6. Perry
7. Pike
8. Posey
9. Spencer
10. Warrick



## 2 Year Interest Free Loans

1. Any city, county, or town (LPA) that receives distributions from the Motor Vehicle Highway Account is eligible.
2. The LPA must use the loan to match federal highway funds.





## Questions and/or Comments



## Contact Information

Rick Whitney

[rwhitney@indot.in.gov](mailto:rwhitney@indot.in.gov)

(317) 232-5190

John Jordan

[jjordan@indot.in.gov](mailto:jjordan@indot.in.gov)

(317) 232-0682

