

INDIANAPOLIS NEW DEPARTMENT  
OF TRANSPORTATION

## Part II-A

# Management of Street Improvement Projects

B. W. JONES, P. E.

Chief Engineer, Street Engineering Division

The organization we are associated with and the service we perform are of vital importance to the benefit of the public's health and welfare.

DOT is the most important and vital department under the Consolidated City of Indianapolis (CCI).

The Division of Street Engineering is the most vital and important division under DOT.

On January 1, 1970, Indianapolis became the 12th largest city in the U.S.A. with:

(1) 400 sq mi area, (2) approximately 800,000 population, (3) approximately 400,000 registered motor vehicles, and (4) approximately 2,770 miles of streets and roads.

DOT is responsible for all transportation functions on the 2,770 miles of roads and streets in the CCI.

To date the extent and magnitude of the responsibility is not clearly understood. Eight hundred thousand people make a visual inspection continually as to what DOT is or is not doing in the area of:

(1) new construction, (2) reconstruction, (3) resurfacing, (4) snow and ice control, (5) road side drainage and maintenance, (6) street, berm, curb and sidewalk repair, (7) street cleaning, (8) weed and brush control, (9) leaf removal, and (10) traffic control, painting, signing and automatic signals.

With this size of an audience the success of the CCI lies largely with the performance of DOT. The organization is made up mostly of engineers.

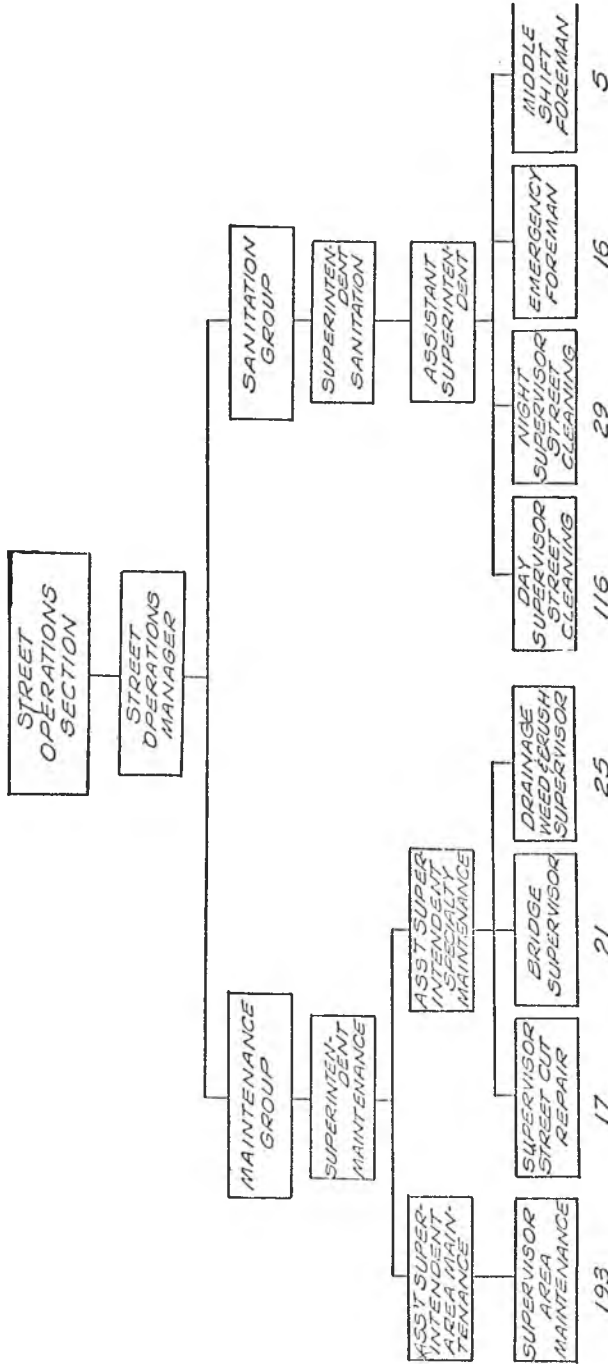


Fig. 1. Street Operation Section Organization.