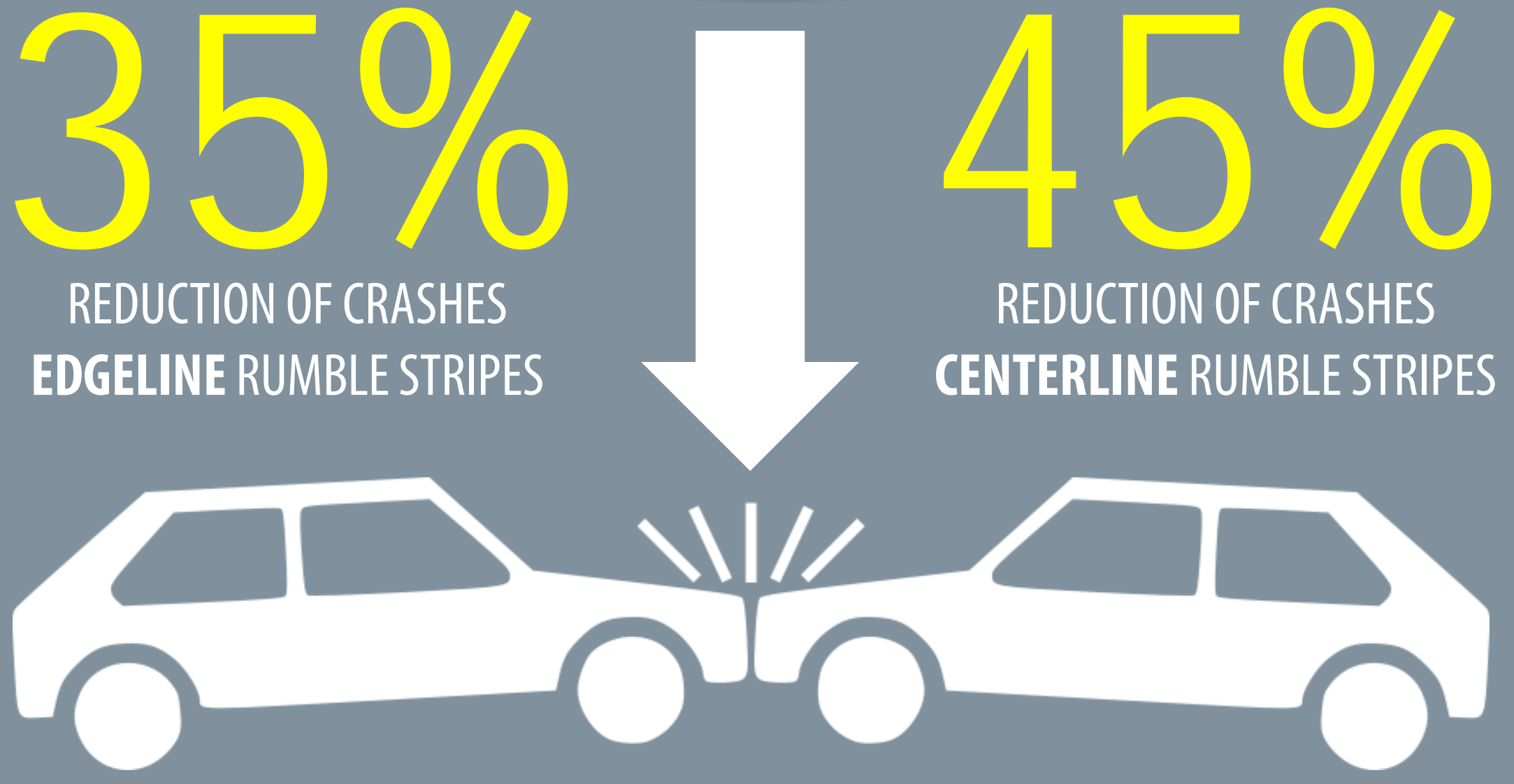




US 231 SOUTH AND CR 800 | TIPPECANOE COUNTY



# RUMBLE STRIPES

## INCREASING VISABILITY & DURABILITY WHILE ALERTING INATTENTIVE DRIVERS

In 2011, the Indiana Department of Transportation (INDOT) initiated a JTRP project to look for alternatives to raised pavement markers. Painted rumble stripes were identified as a technology that was cost effective, provided improved vibratory feedback, and could be used on both centerline and edgelines.

### DISCOVERY WITH DELIVERY

INDOT implemented the recommendations provided by the research with approximately 65 project miles of rumble stripes installed in 12 counties in 2013. In 2014, an additional 160 project miles of rumble stripes are programmed for construction.

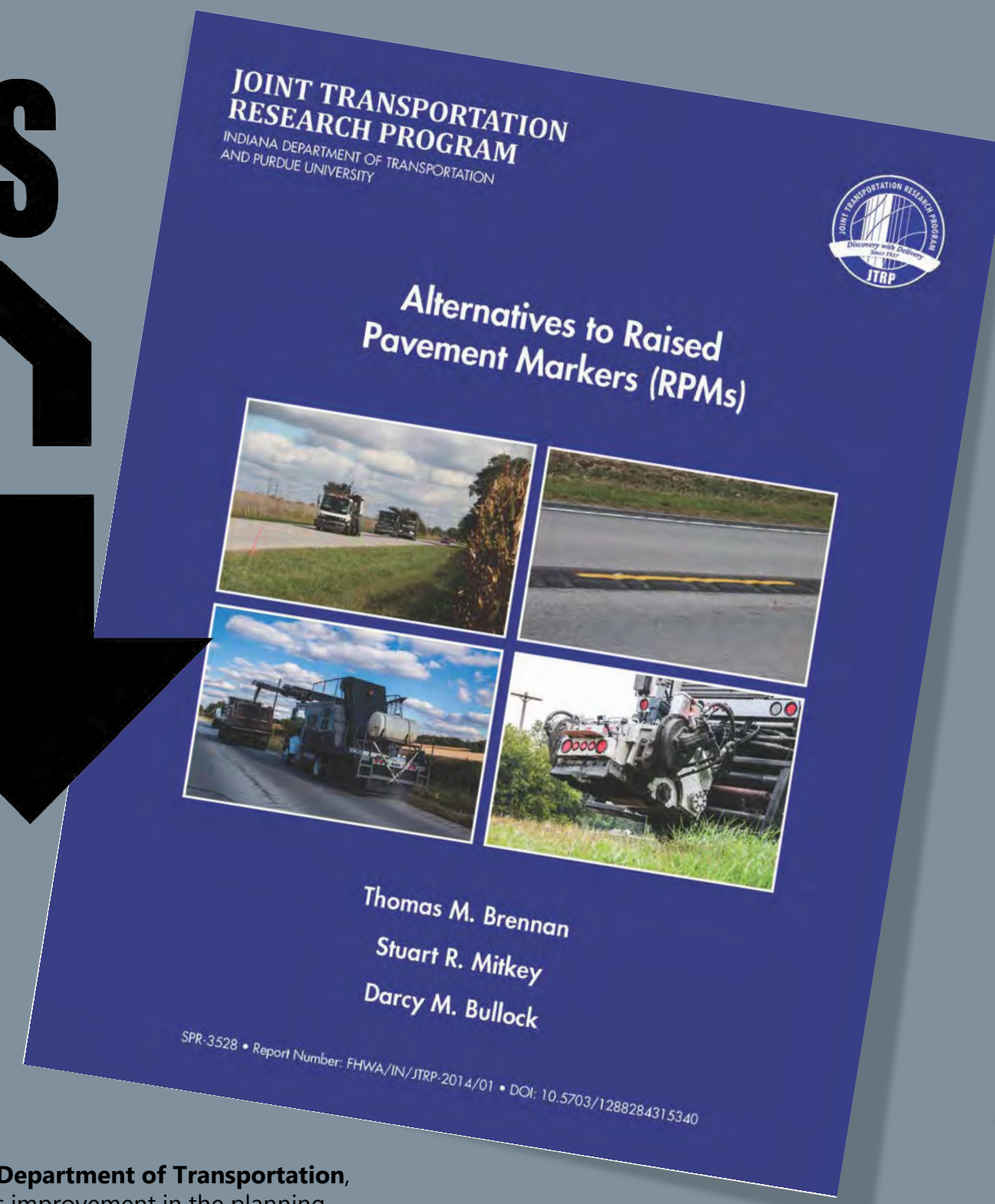


**PURDUE e-Pubs**  
WHERE OUR RESEARCH HITS THE PAVEMENT

Over 1,500 technical reports available for download  
[www.purdue.edu/jtrp](http://www.purdue.edu/jtrp)



**PURDUE UNIVERSITY**



**NEW**

Technical Report now available on e-Pubs with video abstract link archived on Purdue University Research Repository PURR

Download Free PDF

Download Free E-Book

Buy this Technical Report

The Joint Transportation Research Program facilitates collaboration between the Indiana Department of Transportation, higher education institutions and industry to implement innovations that result in continuous improvement in the planning, design, construction, operation, management and economic efficiency of the Indiana transportation infrastructure.

Delon and Elizabeth Hampton Hall of Civil Engineering, 550 Stadium Mall Drive, 4103, West Lafayette, IN 47907-2016 (765) 494-6508 | [JTRP@purdue.edu](mailto:JTRP@purdue.edu) | [purdue.edu/jtrp](http://purdue.edu/jtrp) | @JTRP1937