

8-2013

Post Weld and Epoxy Anchorage Variations for W-Beam Guardrail Attached to Low-Fill Culverts

Scott K. Rosenbaugh

University of Nebraska-Lincoln, srosenbaugh2@unl.edu

Ronald K. Faller

University of Nebraska - Lincoln, rfaller1@unl.edu

Dean L. Sicking

University of Nebraska - Lincoln, dsicking1@unl.edu

Robert W. Bielenberg

University of Nebraska - Lincoln, rbielenberg2@unl.edu

Craig W. Price

University of Nebraska - Lincoln

See next page for additional authors

Follow this and additional works at: <http://digitalcommons.unl.edu/ndor>

 Part of the [Transportation Engineering Commons](#)

Rosenbaugh, Scott K.; Faller, Ronald K.; Sicking, Dean L.; Bielenberg, Robert W.; Price, Craig W.; and Reid, John D., "Post Weld and Epoxy Anchorage Variations for W-Beam Guardrail Attached to Low-Fill Culverts" (2013). *Nebraska Department of Transportation Research Reports*. 109.

<http://digitalcommons.unl.edu/ndor/109>

This Article is brought to you for free and open access by the Nebraska LTAP at DigitalCommons@University of Nebraska - Lincoln. It has been accepted for inclusion in Nebraska Department of Transportation Research Reports by an authorized administrator of DigitalCommons@University of Nebraska - Lincoln.

Authors

Scott K. Rosenbaugh, Ronald K. Faller, Dean L. Sicking, Robert W. Bielenberg, Craig W. Price, and John D. Reid

*Midwest States' Regional Pooled Fund Research Program
Fiscal Years 2010-2011 (Years 21 and 22)
Research Project Number TPF-5(193) Supplement Nos. 34 and 47
NDOR Sponsoring Agency Codes RPF-11-MGS-4 and RPF-12-MGS-4*

POST WELD AND EPOXY ANCHORAGE VARIATIONS FOR W-BEAM GUARDRAIL ATTACHED TO LOW-FILL CULVERTS

Submitted by

Craig W. Price
Former Undergraduate Research Assistant

Scott K. Rosenbaugh, M.S.C.E., E.I.T.
Research Associate Engineer

Ronald K. Faller, Ph.D., P.E.
Research Associate Professor
MwRSF Director

Dean L. Sicking, Ph.D., P.E.
Emeritus Professor

John D. Reid, Ph.D.
Professor

Robert W. Bielenberg, M.S.M.E., E.I.T.
Research Associate Engineer

MIDWEST ROADSIDE SAFETY FACILITY

Nebraska Transportation Center
University of Nebraska-Lincoln
130 Whittier Research Center
2200 Vine Street
Lincoln, Nebraska 68583-0853
(402) 472-0965

Submitted to

MIDWEST STATES' REGIONAL POOLED FUND PROGRAM

Nebraska Department of Roads
1500 Nebraska Highway 2
Lincoln, Nebraska 68502

MwRSF Research Report No. TRP-03-278-13

August 12, 2013

TECHNICAL REPORT DOCUMENTATION PAGE

1. Report No. TRP-03-278-13	2.	3. Recipient's Accession No.	
4. Title and Subtitle Post Weld and Epoxy Anchorage Variations for W-Beam Guardrail Attached to Low-Fill Culverts		5. Report Date August 12, 2013	
		6.	
7. Author(s) Price, C.W., Rosenbaugh, S.K., Faller, R.K., Sicking, D.L., Reid, J.D., and Bielenberg, R.W.		8. Performing Organization Report No. TRP-03-278-13	
9. Performing Organization Name and Address Midwest Roadside Safety Facility (MwRSF) Nebraska Transportation Center University of Nebraska-Lincoln 130 Whittier Research Center 2200 Vine Street Lincoln, Nebraska 68583-0853		10. Project/Task/Work Unit No.	
		11. Contract © or Grant (G) No. TPF-5(193) Supplement Nos. 34 and 47	
12. Sponsoring Organization Name and Address Midwest States' Regional Pooled Fund Program Nebraska Department of Roads 1500 Nebraska Highway 2 Lincoln, Nebraska 68502		13. Type of Report and Period Covered Final Report: 2010 – 2013	
		14. Sponsoring Agency Code RPFP-11-MGS-4 RPFP-12-MGS-4	
15. Supplementary Notes Prepared in cooperation with U.S. Department of Transportation, Federal Highway Administration.			
16. Abstract (Limit: 200 words) <p>The research effort consisted of two objectives for dealing with alterations to the W-beam guardrail system developed for attachment to the top of low-fill culverts. This effort included: (1) investigation of an alternative weld detail to simplify the three-pass fillet weld on the front flange of the post and (2) development of an epoxy anchorage option as opposed to through-bolting. These system modifications were evaluated through four dynamic, bogie tests conducted under the same impact conditions as the original system component testing.</p> <p>Based on a survey of the Pooled Fund member states, two different single-pass weld details were evaluated as a replacement for the 3-pass fillet weld used on the front flange of the post in the original system. However, both single-pass welds resulted in large tears in the base plate adjacent to the front flange. The 3-pass weld detail was successful with a post assembly fabricated from 50 ksi (345 MPa) steel materials. Thus, the 3-pass weld will continue to be recommended for use, while the post and base plate may be composed of ASTM A36 or Grade 50 steel parts.</p> <p>Anchor pullout was encountered for an embedment depth of 6 in. (152 mm), while an 8-in. (203-mm) embedment showed no signs of anchor failure. Thus, an 8 in. (203 mm) minimum embedment depth was recommended for the epoxied anchorage design.</p>			
17. Document Analysis/Descriptors Roadside Barrier, Bogie Testing, W-Beam Guardrail, Culvert, Post Weld Detail, and Epoxy Anchorage		18. Availability Statement No restrictions. Document available from: National Technical Information Services, Springfield, Virginia 22161	
19. Security Class (this report) Unclassified	20. Security Class (this page) Unclassified	21. No. of Pages 70	22. Price

DISCLAIMER STATEMENT

This report was completed with funding from the Federal Highway Administration, U.S. Department of Transportation. The contents of this report reflect the views and opinions of the authors who are responsible for the facts and the accuracy of the data presented herein. The contents do not necessarily reflect the official views or policies of the state highway departments participating in the Midwest States Regional Pooled Fund Program nor the Federal Highway Administration, U.S. Department of Transportation. This report does not constitute a standard, specification, regulation, product endorsement, or an endorsement of manufacturers.

UNCERTAINTY OF MEASUREMENT STATEMENT

The Midwest Roadside Safety Facility (MwRSF) has determined the uncertainty of measurements for several parameters involved in standard full-scale crash testing and non-standard testing of roadside safety features. Information regarding the uncertainty of measurements for critical parameters is available upon request by the sponsor and the Federal Highway Administration.

INDEPENDENT APPROVING AUTHORITY

The Independent Approving Authority (IAA) for the data contained herein was Ms. Karla Lechtenberg, Research Associate Engineer.

ACKNOWLEDGEMENTS

The authors wish to acknowledge several sources that made a contribution to this project:

(1) the Midwest States' Regional Pooled Fund Program funded by the Illinois Department of Transportation, Iowa Department of Transportation, Kansas Department of Transportation, Minnesota Department of Transportation, Missouri Department of Transportation, Nebraska Department of Roads, Ohio Department of Transportation, South Dakota Department of Transportation, Wisconsin Department of Transportation, and Wyoming Department of Transportation for sponsoring this project; and (2) MwRSF personnel for constructing the barrier hardware and conducting the dynamic component tests.

Acknowledgement is also given to the following individuals who made a contribution to the completion of this research project.

Midwest Roadside Safety Facility

J.C. Holloway, M.S.C.E., E.I.T., Research Manager
K.A. Lechtenberg, M.S.M.E., E.I.T., Research Associate Engineer
A.T. Russell, B.S.B.A., Laboratory Mechanic II
K.L. Krenk, B.S.M.A., Field Operations Manager
D.S. Charrion, Laboratory Mechanic
S.M. Tighe, Laboratory Mechanic
Undergraduate and Graduate Assistants

Illinois Department of Transportation

Priscilla A. Tobias, P.E., State Safety Engineer/Bureau Chief
Timothy J. Sheehan, P.E., Safety Design Unit Chief

Iowa Department of Transportation

David Little, P.E., Assistant District Engineer
Deanna Maifield, P.E., Methods Engineer
Chris Poole, Litigation / Roadside Safety Engineer

Kansas Department of Transportation

Ron Seitz, P.E., Bureau Chief
Rod Lacy, P.E., Assistant Bureau Chief
Scott King, P.E., Road Design Leader

Minnesota Department of Transportation

Michael Elle, P.E., Design Standard Engineer

Missouri Department of Transportation

Joseph Jones, P.E., Engineering Policy Administrator

Nebraska Department of Roads

Phil TenHulzen, P.E., Design Standards Engineer
Jodi Gibson, Research Coordinator

Ohio Department of Transportation

Michael Bline, P.E., Standards and Geometrics Engineer
Maria E. Ruppe, P.E., Roadway Standards Engineer

South Dakota Department of Transportation

David Huft, Research Engineer
Bernie Clocksin, Lead Project Engineer

Wisconsin Department of Transportation

Jerry Zogg, P.E., Chief Roadway Standards Engineer
John Bridwell, P.E., Standards Development Engineer
Eric Emerson, P.E., Standards Development Engineer

Wyoming Department of Transportation

William Wilson, P.E., Standards Engineer

Federal Highway Administration

John Perry, P.E., Nebraska Division Office
Danny Briggs, Nebraska Division Office

TABLE OF CONTENTS

TECHNICAL REPORT DOCUMENTATION PAGE i

DISCLAIMER STATEMENT ii

UNCERTAINTY OF MEASUREMENT STATEMENT ii

INDEPENDENT APPROVING AUTHORITY ii

ACKNOWLEDGEMENTS iii

TABLE OF CONTENTS v

LIST OF FIGURES vii

LIST OF TABLES viii

1 INTRODUCTION 1

 1.1 Introduction 1

 1.2 Objective 4

 1.3 Scope 4

2 COMPONENT TESTING PARAMETERS 6

 2.1 Purpose 6

 2.2 Selection of Alternative Weld Details 6

 2.3 Component Testing Setup 8

 2.4 Test Facility 17

 2.5 Equipment and Instrumentation 17

 2.5.1 Bogie 17

 2.5.2 Accelerometers 18

 2.5.3 Pressure Tape Switches 20

 2.5.4 Photography Cameras 20

 2.6 End of Test Determination 20

 2.7 Data Processing 21

3 COMPONENT TESTING RESULTS AND DISCUSSION 22

 3.1 Results 22

 3.1.1 Test No. CGSA-1 22

 3.1.2 Test No. CGSA-2 27

 3.1.3 Test No. CGSA-3 32

 3.1.4 Test No. CGSA-4 37

 3.2 Discussion 42

 3.3 Comparison to Original Testing Results 43

4 SUMMARY, CONCLUSIONS, AND RECOMMENDATIONS 46

5 REFERENCES 49

6 APPENDICES 50
 Appendix A. Material Specifications 51
 Appendix B. Bogie Test Results 61

LIST OF FIGURES

Figure 1. Original System Details for Guardrail Attachment to Culverts [1].....	2
Figure 2. Original System Post and Weld Details [1].....	3
Figure 3. Proposed Standardized Weld Options.....	7
Figure 4. Bogie Testing Setup, Test Nos. CGSA-1 through CGSA-4.....	10
Figure 5. Post Assembly and Weld Details, Test Nos. CGSA-1 through CGSA-4.....	11
Figure 6. Attachment Component Details, Test Nos. CGSA-1 through CGSA-4.....	12
Figure 7. Bogie Impact Head Details, Test Nos. CGSA-1 through CGSA-4.....	13
Figure 8. Impact Head Component Details, Test Nos. CGSA-1 through CGSA-4.....	14
Figure 9. Bill of Materials, Test Nos. CGSA-1 through CGSA-4.....	15
Figure 10. Pre-test Installation Photographs.....	16
Figure 11. Rigid-Frame Bogie.....	18
Figure 12. Force vs. Deflection and Energy vs. Deflection, Test No. CGSA-1.....	23
Figure 13. Time-Sequential Photographs, Test No. CGSA-1.....	24
Figure 14. Time-Sequential Photographs, Test No. CGSA-1.....	25
Figure 15. Post-Impact Photographs, Test No. CGSA-1.....	26
Figure 16. Force vs. Deflection and Energy vs. Deflection, Test No. CGSA-2.....	28
Figure 17. Time-Sequential Photographs, Test No. CGSA-2.....	29
Figure 18. Time-Sequential Photographs, Test No. CGSA-2.....	30
Figure 19. Post-Impact Photographs, Test No. CGSA-2.....	31
Figure 20. Force vs. Deflection and Energy vs. Deflection, Test No. CGSA-3.....	33
Figure 21. Time-Sequential Photographs, Test No. CGSA-3.....	34
Figure 22. Time-Sequential Photographs, Test No. CGSA-3.....	35
Figure 23. Post-Impact Photographs, Test No. CGSA-3.....	36
Figure 24. Force vs. Deflection and Energy vs. Deflection, Test No. CGSA-4.....	38
Figure 25. Time-Sequential Photographs, Test No. CGSA-4.....	39
Figure 26. Time-Sequential Photographs, Test No. CGSA-4.....	40
Figure 27. Post-Impact Photographs, Test No. CGSA-4.....	41
Figure 28. Comparison of Force vs. Deflection Curves.....	44
Figure 29. Comparison of Energy vs. Deflection Curves.....	45
Figure A-1. W6x9 (W152x13.4) Steel Posts, Test Nos. CGSA-1 and CGSA-2.....	54
Figure A-2. W6x9 (W152x13.4) Steel Posts, Test Nos. CGSA-3 and CGSA-4.....	55
Figure A-3. ½-in. (13-mm) Thick Base Plate, Test Nos. CGSA-1 and CGSA-2.....	56
Figure A-4. ½-in. (13-mm) Thick Base Plate, Test Nos. CGSA-3 and CGSA-4.....	57
Figure A-5. 1-in. (25-mm) Diameter Threaded Rods, Test Nos. CGSA-1 through 4.....	58
Figure A-6. 1-in. (25-mm) Flat Washers, Test Nos. CGSA-1 through 4.....	59
Figure A-7. 1-in. (25-mm) Hex Nuts, Test Nos. CGSA-1 through 4.....	60
Figure B-1. Results of Test No. CGSA-1 (DTS).....	62
Figure B-2. Results of Test No. CGSA-1 (EDR-3).....	63
Figure B-3. Results of Test No. CGSA-2 (DTS).....	64
Figure B-4. Results of Test No. CGSA-2 (DTS-SLICE).....	65
Figure B-5. Results of Test No. CGSA-3 (DTS).....	66
Figure B-6. Results of Test No. CGSA-3 (EDR-3).....	67
Figure B-7. Results of Test No. CGSA-4 (DTS-SLICE).....	68
Figure B-8. Results of Test No. CGSA-4 (EDR-3).....	69

LIST OF TABLES

Table 1. Dynamic Component Testing Matrix 9
Table 2. Accelerometer System Used During Each Bogie Test 18
Table 3. Test Results from Bogie Testing Matrix..... 42
Table A-1. Material Certification List, Test Nos. CGSA-1 and CGSA-2 52
Table A-2. Material Certification List, Test Nos. CGSA-3 and CGSA-4 53

1 INTRODUCTION

1.1 Introduction

W-beam guardrail systems often span across reinforced concrete box culverts in order to prevent motorists from encountering hazardous conditions near the openings. For low-fill culverts of widths exceeding the maximum unsupported length of long-span systems, a few W-beam guardrail designs are available for direct attachment to the top culvert slab. One such guardrail system was developed in 2002 by the Midwest Roadside Safety Facility (MwRSF) [1]. This system utilized a ½-in. (13-mm) thick steel plate welded to the bottom of each guardrail post with a 5/16-in. (8-mm) three-pass fillet weld on the front (tension) flange and a ¼-in. (6-mm) fillet weld on the web and back (compression) flange. The post assembly was anchored to the culvert slab using four 1-in. (25-mm) diameter through bolts. Finally, the back-side of the post was offset 18 in. (457 mm) from the inside of the culvert headwall to prevent interaction between the posts and the rigid headwall as the system deflects during an impact event. This system was successfully developed and full-scale crash tested according to the Test Level 3 (TL-3) safety performance guidelines found in National Cooperative Highway Research Program (NCHRP) Report No. 350 [2]. Drawings for this system are shown in Figures 1 and 2.

During the implementation of the W-beam guardrail system for attachment to concrete box culverts, various State Departments of Transportation (DOTs) have raised questions concerning the use of the three-pass fillet weld on the front flange of the attachment post. Multiple States have expressed a desire to simplify the weld to a single-pass detail. Therefore, a need exists to re-examine the use of the three-pass fillet weld and determine whether a simplified alternative weld detail could be utilized in combination with the other details of the post-to-plate attachment.

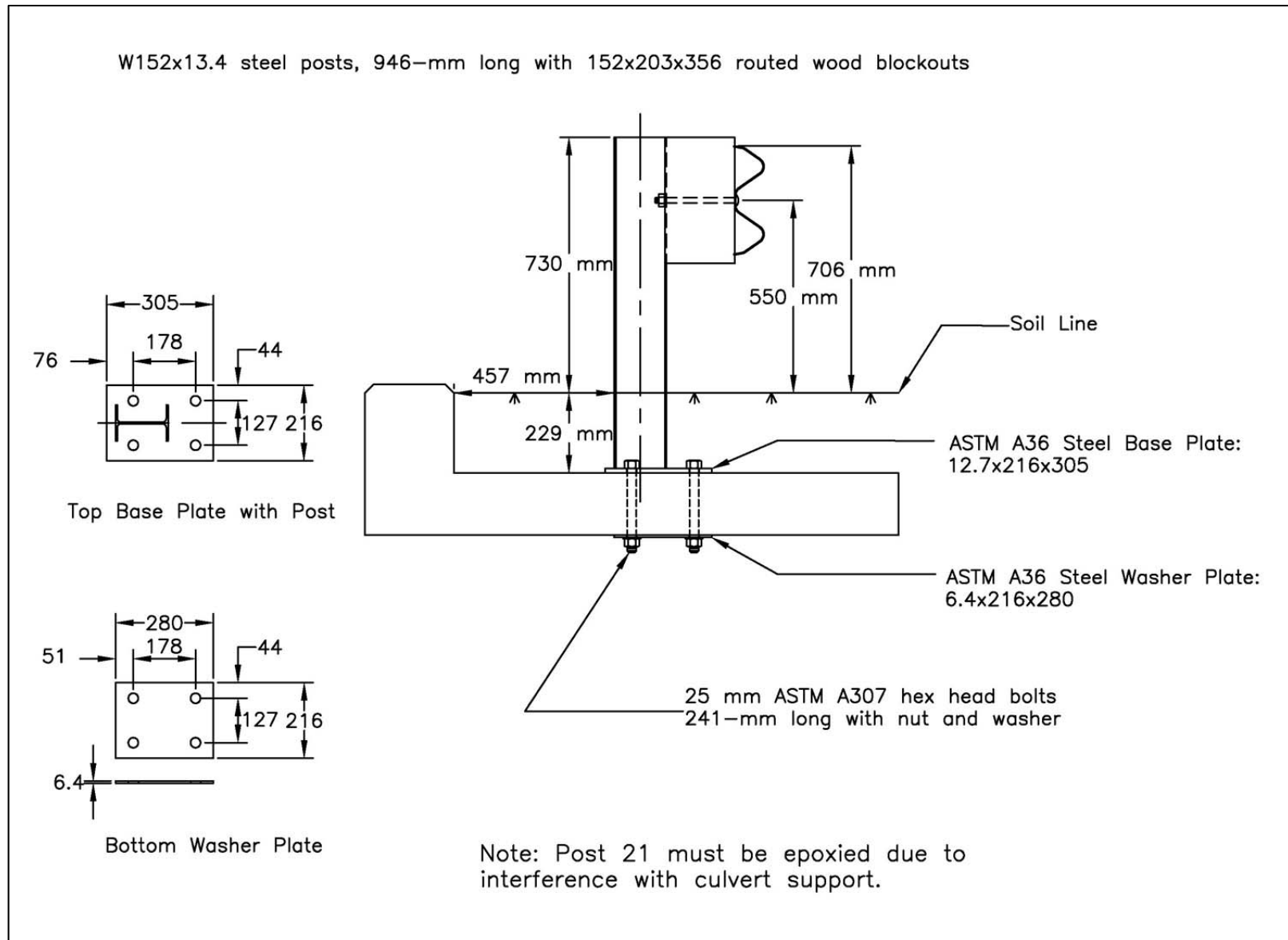


Figure 1. Original System Details for Guardrail Attachment to Culverts [1]

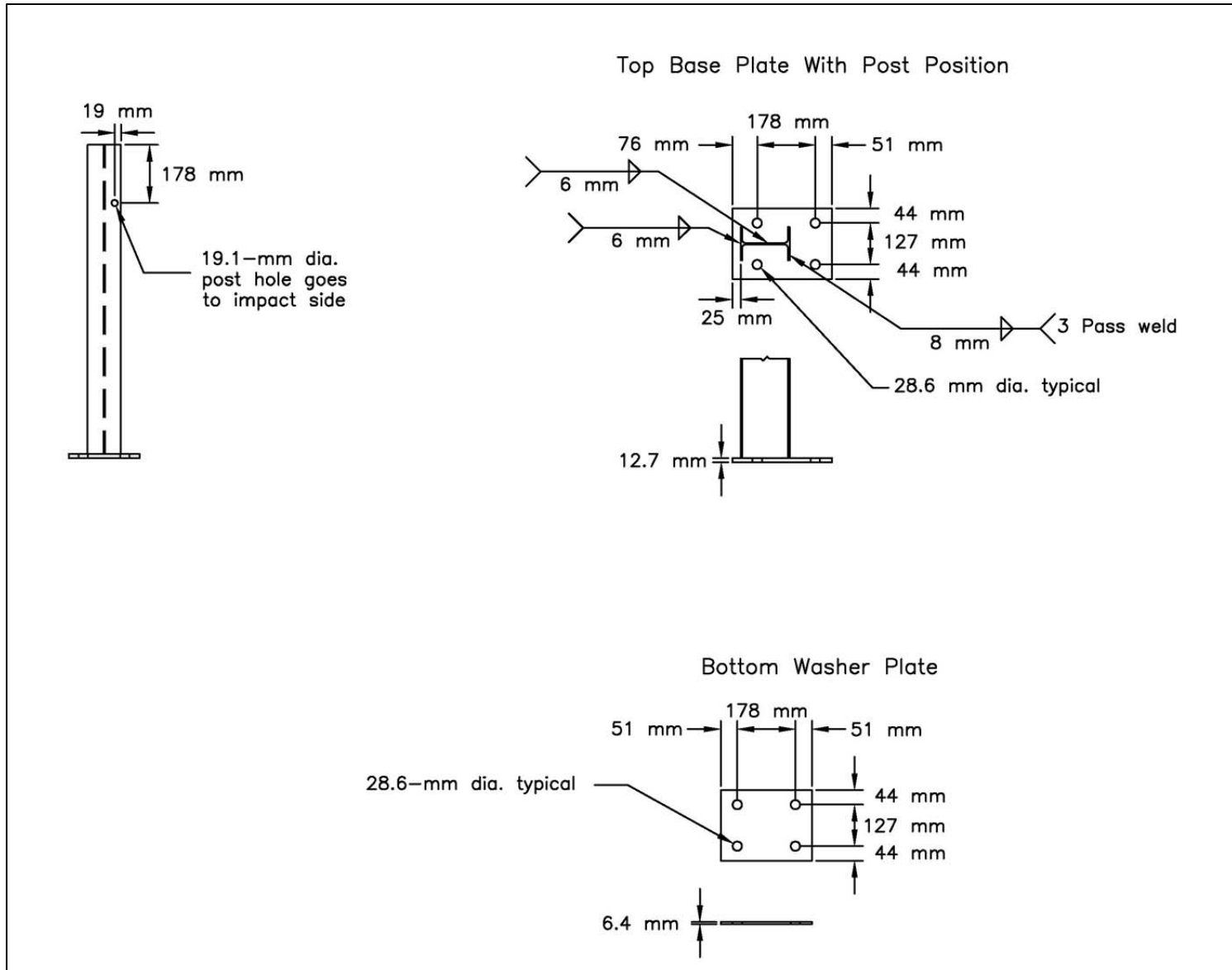


Figure 2. Original System Post and Weld Details [1]

Installation problems have resulted when the guardrail post location coincides with a vertical support wall found inside the culvert. For this scenario, vertical through-bolts cannot be utilized to anchor the guardrail posts to the culvert slab since space is not available to place the lower bearing plate or access the lower end of the through-bolt and attach a nut. Unfortunately, alternative anchorage options, such as epoxy anchorage of threaded rods, have not been previously developed. Therefore, a need exists to evaluate the required embedment depth and epoxy strength to anchor posts to the culvert top slab.

1.2 Objective

This research effort consisted of two objectives investigating modifications to the W-beam guardrail system developed for attachment to the top of low-fill culverts. The first objective was to re-examine the use of the three-pass fillet weld on the front flange of the post and determine if an alternative weld detail can be utilized to simplify the post fabrication. The second objective was to develop an epoxy anchor option as an alternative to the through-bolt anchorage of the guardrail attached to culvert system. In developing these potential alterations, it was essential that the post-to-culvert attachment remained intact under dynamic loading where large deformations are observed.

1.3 Scope

Over the last several years, multiple State DOTs have discussed the use of alternative weld details for the post attachment to culvert slabs. As such, MwRSF reviewed the current weld details for the culvert-mounted steel post from the members of the Midwest States Pooled Fund program as well surveyed the member states to obtain recommendations for a standardized weld detail. Subsequently, MwRSF selected the preferred alternative weld details for the culvert post and evaluated their performance through dynamic component testing. Additionally, the minimum

embedment depth required to anchor the 1-in. (25-mm) diameter bolts or rods utilizing an epoxy adhesive was evaluated through the same dynamic component testing. A total of four dynamic bogie tests were performed on culvert posts anchored to MwRSF's concrete tarmac. Finally, conclusions and recommendations were made for revising the weld detail and utilizing epoxied anchor rods instead of through-bolts.

2 COMPONENT TESTING PARAMETERS

2.1 Purpose

During the initial development of the W-beam guardrail system mounted on top of a culvert, multiple component tests were conducted to evaluate the post-to-culvert attachment [1]. Design variations on both base plate thickness and weld details were explored to find a combination that resulted in the anchorage system remaining intact through large deformations. All post rotations were expected to include plastic deformations in the post and plate. Configurations resulting in tearing of the plate and/or weld failure were not considered for the final design. This bogie testing study resulted in the selection of a ½-in. (13-mm) thick base plate, a ⁵/₁₆-in. (8-mm) three-pass fillet weld on the front (tension) flange, and a ¼-in. (6-mm) fillet weld on the web and back-side (compression) flange. This attachment configuration (in combination with through bolts) was then successfully full-scale crash tested according to the TL-3 impact safety standards of NCHRP Report No. 350 [2]. Therefore, the design alternatives to the post-to-culvert attachment proposed in this study were subjected to the same dynamic bogie testing. Only the alternatives that provided enough strength to resist material tearing, fracture, and anchor pullout would be recommended for use.

2.2 Selection of Alternative Weld Details

Through a review of State DOT drawings and recommendations for the simplification of the post-to-plate attachment, five different weld options were identified as possible replacements to the 3-pass, ⁵/₁₆-in (8-mm) fillet weld. These five weld options are shown in Figure 3. Weld Option A included a ¼-in. (6-mm) fillet weld on the web and back flange and a full penetration weld on the front flange with minor grinding to reduce residual stresses. Weld Option B was the same as Weld Option A, but without the grinding. Weld Option C utilized a single-pass ⁵/₁₆-in.

(8-mm) weld on the front flange while maintaining the 1/4-in. (6-mm) fillet welds on the web and back flange. Finally, Weld Options D and E utilized only single fillet welds around the entire base of the post measuring 5/16 in. (8 mm) and 1/4 in. (6 mm), respectively.

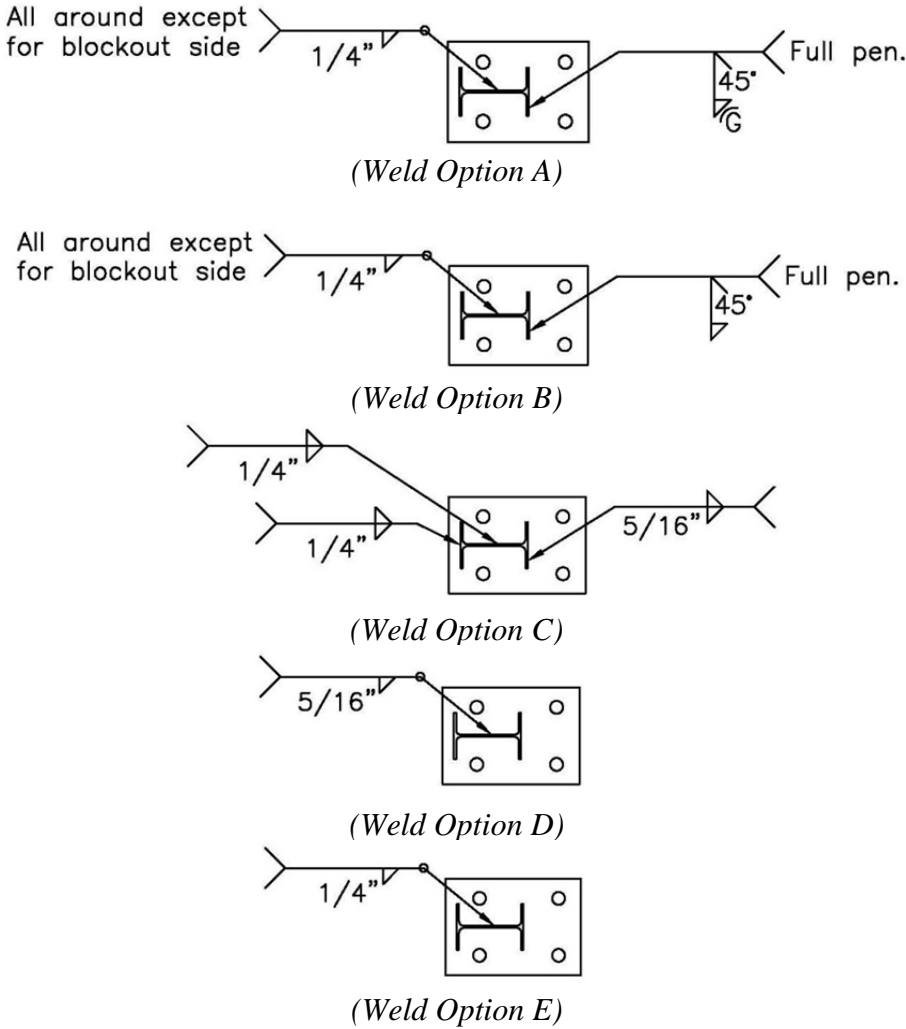


Figure 3. Proposed Standardized Weld Options

These five weld options were presented to the members of the Midwest States Pooled Fund program, and each member state was asked to indicate which two weld options were considered most desirable. Overwhelmingly, Weld Options D and E were the most desired. Therefore, Weld Options D and E were selected to be evaluated through dynamic bogie testing.

2.3 Component Testing Setup

Four bogie tests were conducted on the proposed alterations to the original guardrail post attachment to culverts. Similar to the component tests conducted during the development of the original system, each test involved the bogie vehicle impacting the post assembly at a height of 30 $\frac{5}{8}$ in. (778 mm). Note, this impact height corresponds to the 21.65 in. (550 mm) height to the center of the guardrail above ground line plus the 9 in. (229 mm) depth of soil fill on the culvert. Additionally, the dimensions of the post and the base plate remained unchanged. Thus, the W6x9 (W152x13.4) steel posts were 37 in. (940 mm) in length, and the base plates measured 8 $\frac{1}{2}$ in. x 12 in. x $\frac{1}{2}$ in. (216 mm x 305 mm x 13 mm). Finally, the targeted impact speed and angle remained the same at 10 mph (16 km/h) and 0 degrees (strong-axis bending), respectively.

The post and base plate assembly developed and tested for the original system utilized all ASTM A36 steel components. However, in the years since that project was completed, the use of higher Grade 50 ksi (345 MPa) steel has become more prominent for standard rolled shapes, and obtaining A36 wide-flange sections has become increasingly more difficult. Therefore, researchers identified the need to utilize the higher grade steel posts to evaluate the future use of this guardrail system. Subsequently, ASTM A992 W6x9 (W152x13.4) steel posts were used in all four of the bogie tests presented herein. It was also recognized that Grade 50 steel plate was also becoming more prominent. Thus, after tearing was observed in the base plates during the first two bogie tests, the plate material was also upgraded to 50 ksi (345 MPa) steel for test nos. CGSA-3 and CGSA-4.

For test nos. CGSA-1 through CGSA-3, several attempts were made to simplify the post-to-plate attachment weld by using only single-pass fillet welds. The size of the fillet welds varied between $\frac{1}{4}$ in. and $\frac{5}{16}$ in. (6 mm and 8 mm), as shown in Table 1. Only test no. CGSA-4 utilized

a different weld on the front flange than the rest of the post (i.e., web and back flange). Test no. CGSA-4 utilized the same weld detail as the original post design with a 3-pass, $\frac{5}{16}$ -in. (8-mm) fillet weld on the front flange (weld “Y”) and a $\frac{1}{4}$ -in. (6-mm) fillet weld throughout the rest of the joint (weld “X”).

Similar to the original system, the posts were anchored to the concrete tarmac by four 1-in. (25-mm) diameter, ASTM A307 threaded rods epoxied into the concrete. However, the embedment depth of the anchor rods was varied between tests in an attempt to evaluate the minimum required embedment depth. In test nos. CGSA-1 and CGSA-2, the rods were embedded at 12 in. (305 mm) below the ground line. Test nos. CGSA-3 and CGSA-4 used embedment depths of 6 in. (152 mm) and 8 in. (203 mm), respectively. Powers Fasteners epoxy AC100+ Gold with a minimum bond strength of 1,305 psi (9.0 MPa) was used during this study.

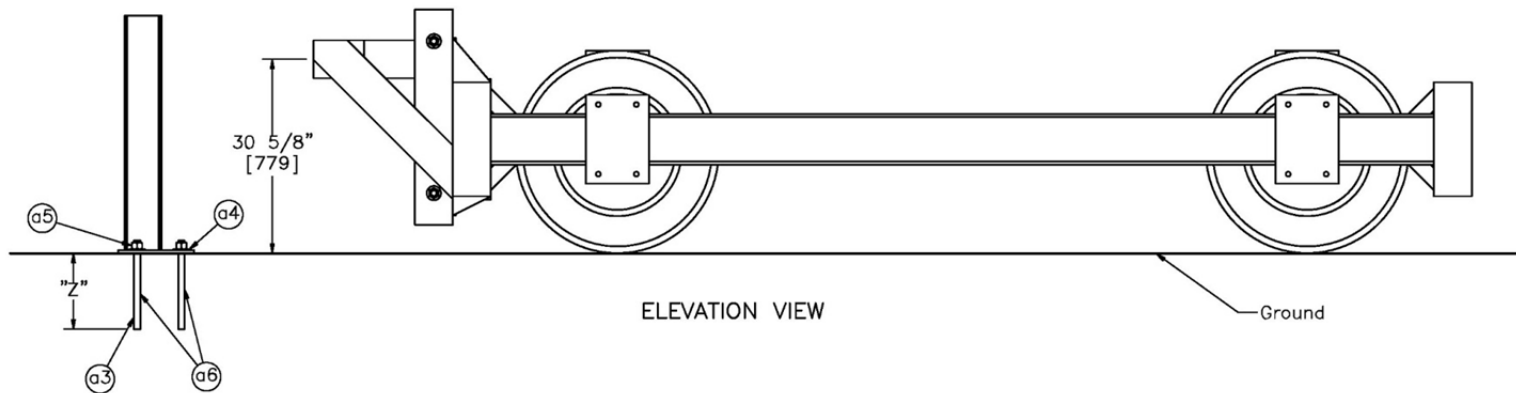
Variations in system components are outlined in the dynamic component test matrix shown in Table 1. System design drawings and test setups are shown in Figures 4 through 9, and a pretest photographs are shown in Figure 10. Material specifications, mill certifications, and certificates of conformance for all materials are shown in Appendix A.

Table 1. Dynamic Component Testing Matrix

Test No.	Post Material	Base Plate Material	Fillet Weld “X”	Fillet Weld “Y” (Front Flange)	Anchor Embedment Depth
CGSA-1	A992	A36	Single Pass $\frac{5}{16}$ in. (8 mm)	Single Pass $\frac{5}{16}$ in. (8 mm)	12 in. (305 mm)
CGSA-2	A992	A36	Single Pass $\frac{1}{4}$ in. (6 mm)	Single Pass $\frac{1}{4}$ in. (6 mm)	12 in. (305 mm)
CGSA-3	A992	A529 / A572 (Gr. 50)	Single Pass $\frac{5}{16}$ in. (8 mm)	Single Pass $\frac{5}{16}$ in. (8 mm)	6 in. (152 mm)
CGSA-4	A992	A529 / A572 (Gr. 50)	Single Pass $\frac{1}{4}$ in. (6 mm)	Triple Pass $\frac{5}{16}$ in. (8 mm)	8 in. (203 mm)

Test No.	Impact Speed mph [km/h]	Bogie No.	Fillet Weld "X" in. [mm] (See Sheet 2)	Fillet Weld "Y" in. [mm] (See Sheet 2)	Embedment Depth "Z" in. [mm]
CGSA-1	10 [16.1]	2	5/16 [8]	5/16 [8]	12 [305]
CGSA-2	10 [16.1]	2	1/4 [6]	1/4 [6]	12 [305]
CGSA-3	10 [16.1]	2	5/16 [8]	5/16 [8]	6 [152]
CGSA-4	10 [16.1]	2	1/4 [6]	5/16 [8]*	8 [203]

* Triple Pass



- Notes: (1) Threaded rods are to be epoxied in the tarmac with Powers Fasteners AC100+ Gold epoxy or an equivalent epoxy with a minimum bond strength of 1,305 psi [9.0 MPa].
- (2) 1" [25] dia. threaded rods were cut to a length equal to 2 in. [51] plus the embedment depth.


	Culvert Guardrail System Attachment		SHEET: 1 of 6
	Bogie Setup		DATE: 2/25/2013
DWG. NAME: CulvertGuardrailSystem_R11	SCALE: 1:24 UNITS: in.[mm]	REV. BY: SKR/KAL/RKF	DRAWN BY: DMH/MDM/JGP

Figure 4. Bogie Testing Setup, Test Nos. CGSA-1 through CGSA-4

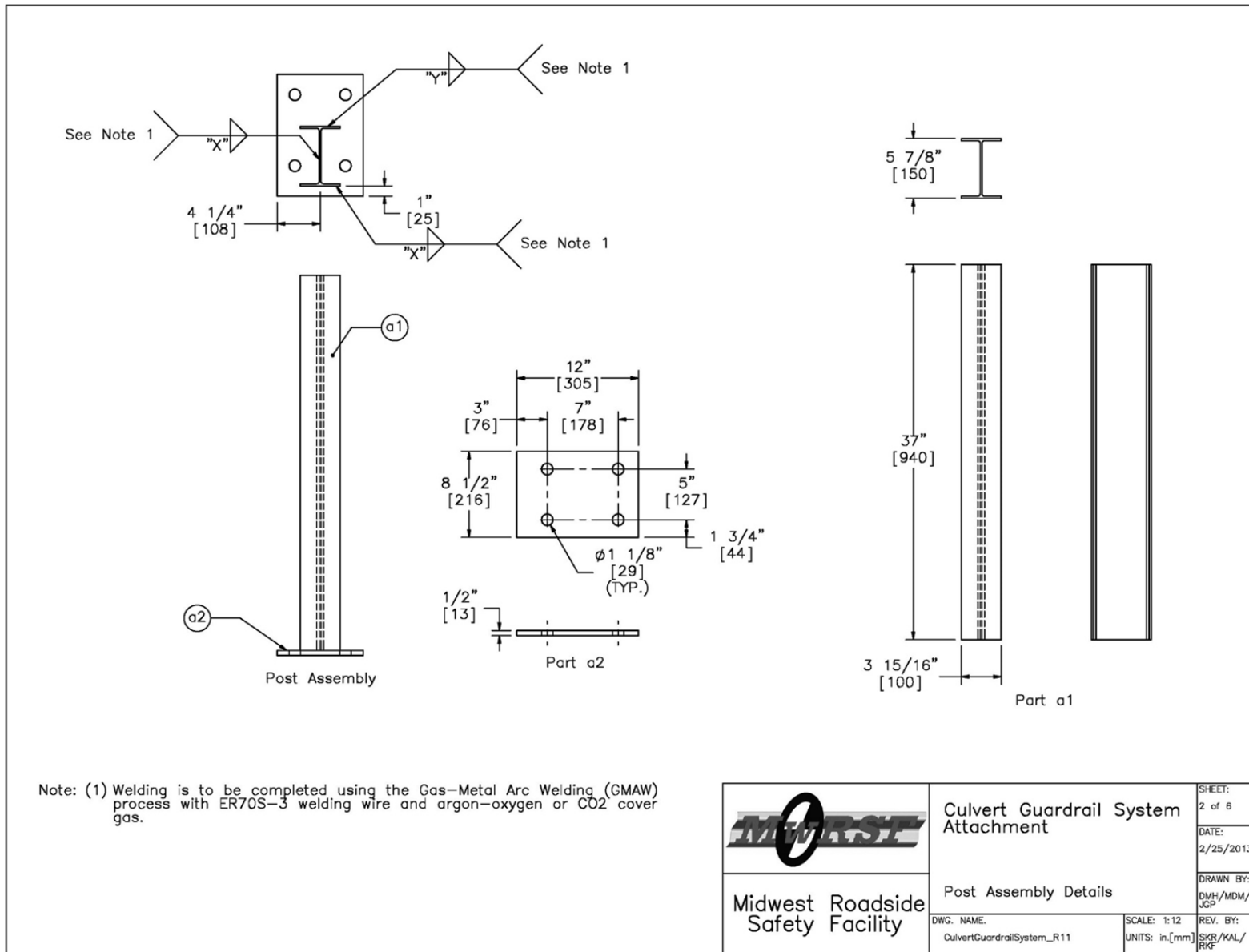


Figure 5. Post Assembly and Weld Details, Test Nos. CGSA-1 through CGSA-4

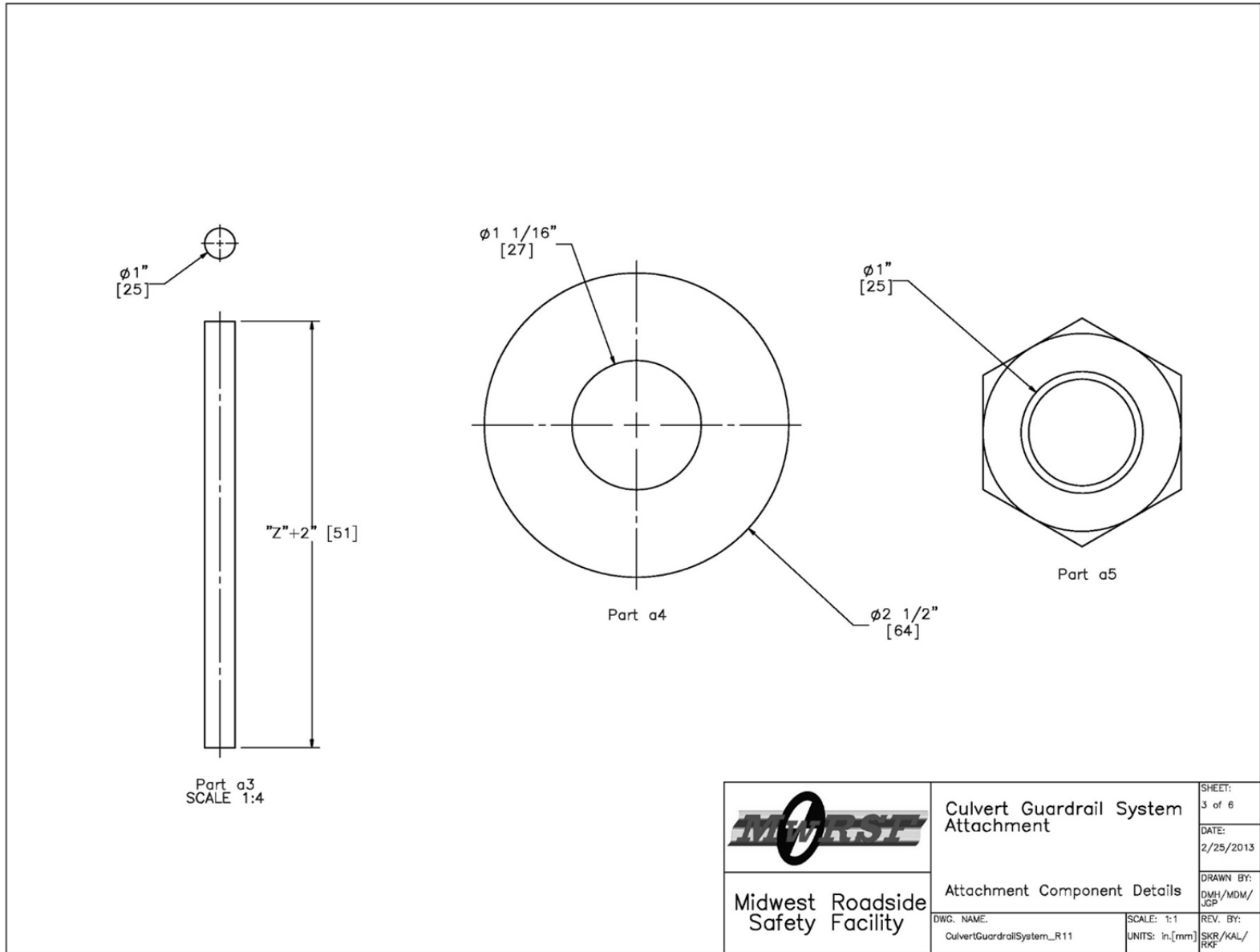


Figure 6. Attachment Component Details, Test Nos. CGSA-1 through CGSA-4

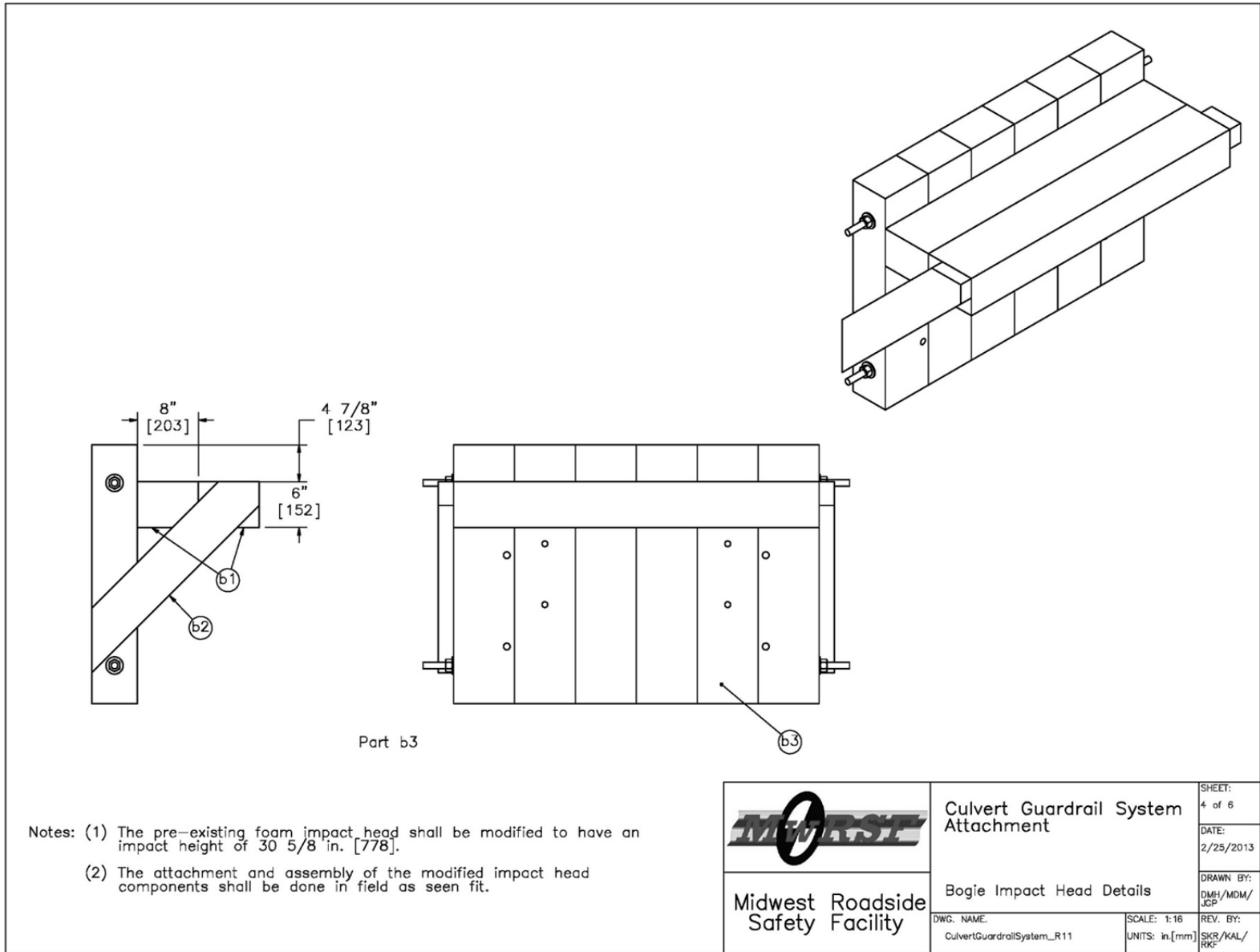


Figure 7. Bogie Impact Head Details, Test Nos. CGSA-1 through CGSA-4

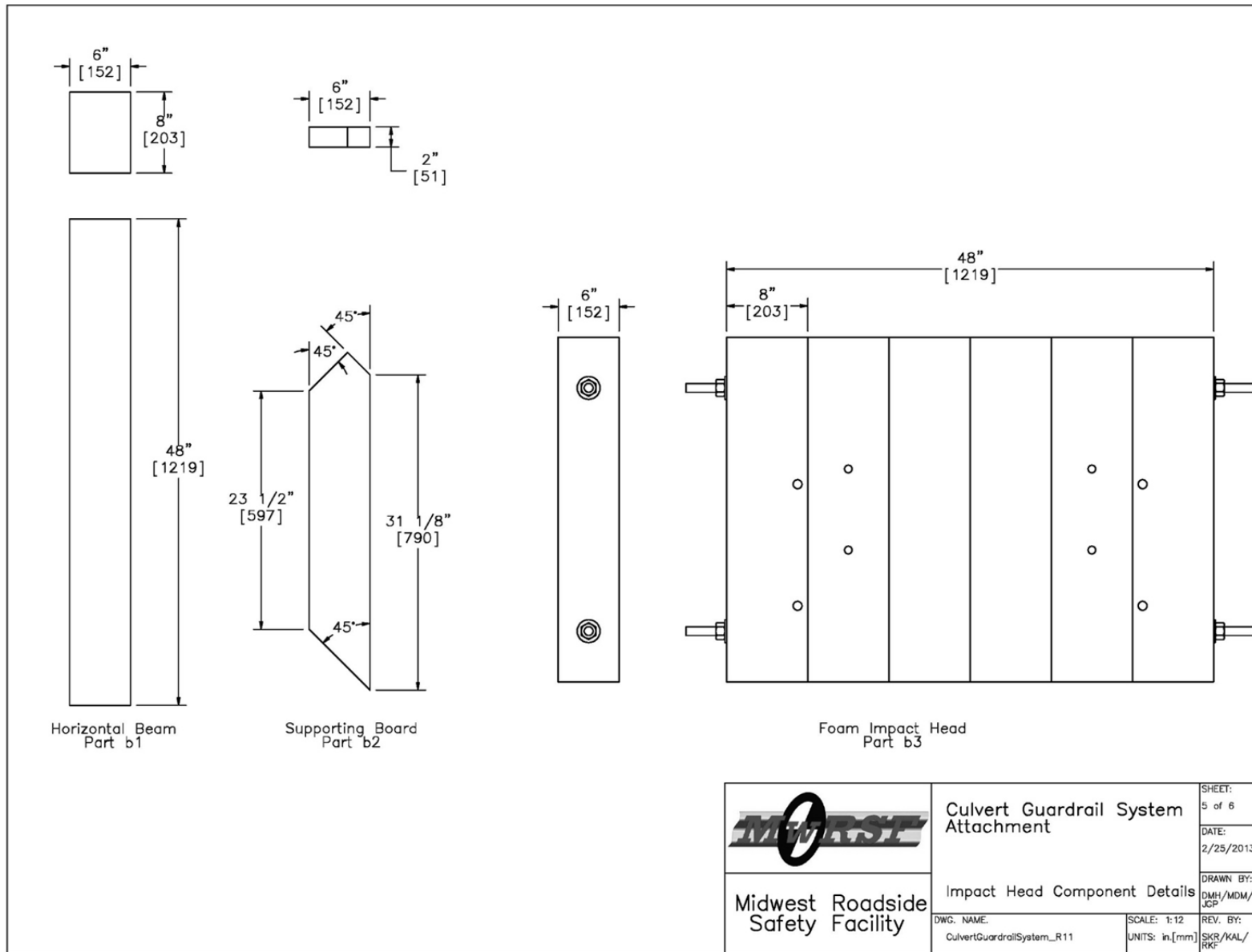


Figure 8. Impact Head Component Details, Test Nos. CGSA-1 through CGSA-4

Culvert Guardrail System Attachment Test Nos. CGSA-1 & 2				
Item No.	QTY.	Description	Material Specification	Hardware Guide
a1	1	37" [940] Long, W6x8.5 [W152x12.6] or W6x9 [W152x13.4] Post	ASTM A992 Min. 50 ksi [345 MPa]	—
a2	1	1/2"x8 1/2"x12" [13x216x305] Top Base Plate	ASTM A36	—
a3	4	1" [25] Dia. UNC, Variable Length Threaded Rod	SAE J429 Grade 2/ASTM A307 Grade C/ ASTM F1554 Grade 36	—
a4	4	1" [25] Dia. Flat Washer	ASTM F844	—
a5	4	1" [25] Dia. UNC Hex Nut	ASTM A563A	—
a6	—	Powers Fasteners AC100+ Gold Epoxy	Minimum Bond Strength = 1,305 psi [9.0 MPa]	—
b1	2	6"x8"x48" [152x203x1219] Horizontal Beam	Wood	—
b2	2	2"x6"x34" [51x152x864] Supporting Board	Wood	—
b3	1	Impact Head	Wood	—
Culvert Guardrail System Attachment Test Nos. CGSA-3 & 4				
Item No.	QTY.	Description	Material Specification	Hardware Guide
a1	1	37" [940] Long, W6x8.5 [W152x12.6] or W6x9 [W152x13.4] Post	ASTM A992 Min. 50 ksi [345 MPa]	—
a2	1	1/2"x8 1/2"x12" [13x216x305] Top Base Plate	ASTM A529 Gr. 50 or ASTM A572 Gr. 50 Depending on Availability	—
a3	4	1" [25] Dia. UNC, Variable Length Threaded Rod	SAE J429 Grade 2/ASTM A307 Grade C/ ASTM F1554 Grade 36	—
a4	4	1" [25] Dia. Flat Washer	ASTM F844	—
a5	4	1" [25] Dia. UNC Hex Nut	ASTM A563A	—
a6	—	Powers Fasteners AC100+ Gold Epoxy	Minimum Bond Strength = 1,305 psi [9.0 MPa]	—
b1	2	6"x8"x48" [152x203x1219] Horizontal Beam	Wood	—
b2	2	2"x6"x34" [51x152x864] Supporting Board	Wood	—
b3	1	Impact Head	Wood	—
			Culvert Guardrail System Attachment	
Midwest Roadside Safety Facility			Bill of Materials	
DWG. NAME: CulvertGuardrailSystem_R11			SCALE: NONE UNITS: in.[mm]	SHEET: 6 of 6 DATE: 2/25/2013 DRAWN BY: DMH/MDM/ JGP REV. BY: SKR/KAL/ RKF

Figure 9. Bill of Materials, Test Nos. CGSA-1 through CGSA-4



Figure 10. Pre-test Installation Photographs

2.4 Test Facility

Physical testing of the steel post-to-culvert attachments was conducted at the MwRSF outdoor testing facility, which is located at the Lincoln Air Park on the northwest side of the Lincoln Municipal Airport. The facility is approximately 5 miles (8 km) northwest from the University of Nebraska-Lincoln's city campus.

2.5 Equipment and Instrumentation

Equipment and instrumentation utilized to collect and record data during the dynamic bogie tests included a bogie, onboard accelerometers, pressure tape switches, high-speed and standard-speed digital video cameras, and a digital still camera.

2.5.1 Bogie

A rigid-frame bogie was used to impact the posts. A customized, detachable wooden impact head, shown previously in Figures 7 and 8, was used in the testing. The bogie head consisted of six vertical and two horizontal 6 in. x 8 in. (152 mm x 203 mm) wood posts. This impact head matched the one used previously during the original component testing of the post-to-culvert attachment. The impact head was bolted to the bogie vehicle, thus creating a rigid frame with an impact height of 30⁵/₈ in. (778 mm), as shown in Figure 11. The weight of the bogie with the addition of the mountable impact head was 4,996 lb (2,266 kg), 4,999 lb (2,268 kg), 5,010 lb (2,273 kg), and 4,995 lb (2,266 kg) for test nos. CGSA-1, CGSA-2, CGSA-3, and CGSA-4, respectively.

The tests were conducted using a steel pipe guidance track to steer the bogie vehicle into a centered, head-on impact with the test article. A pickup truck was used to propel the bogie vehicle to the targeted impact velocity of 10 mph (16 km/h), at which point the pickup truck braked, allowing the bogie to become a free projectile as it came off the track.

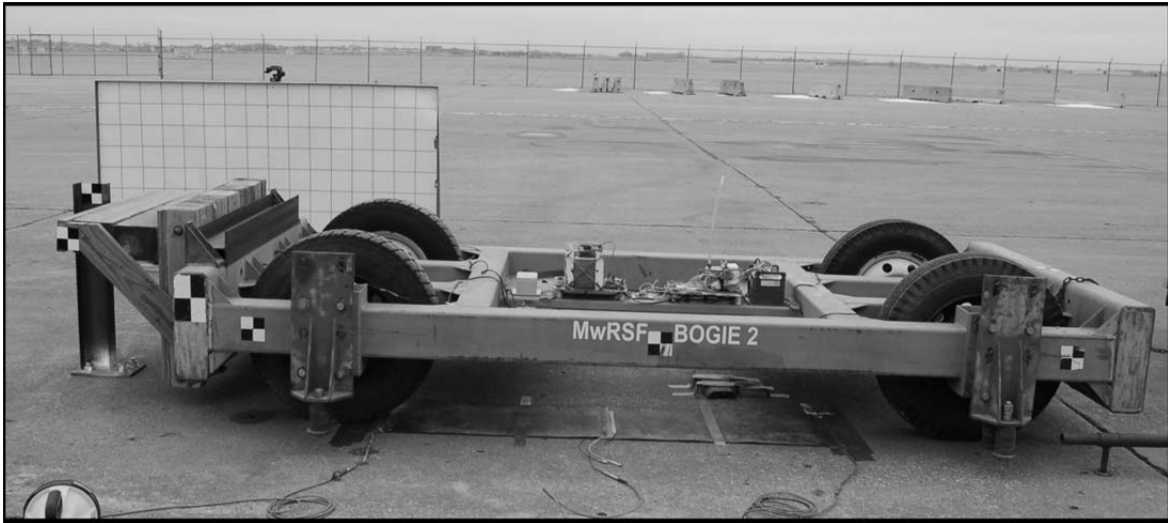


Figure 11. Rigid-Frame Bogie

2.5.2 Accelerometers

A total of three different environmental shock and vibration sensor/recorder systems were used during the component tests to measure the accelerations in the bogie’s longitudinal direction. However, only two accelerometers were utilized on any individual test. The accelerometer systems utilized during each of the four bogie tests are shown in Table 2. All of the accelerometers were mounted near the center of gravity of the bogie. The electronic accelerometer data obtained in dynamic testing was filtered using the SAE Class 60 Butterworth filter conforming to the SAE J211/1 specifications [3].

Table 2. Accelerometer System Used During Each Bogie Test

Test No.	DTS	DTS-SLICE	EDR-3
CGSA-1	X		X
CGSA-2	X	X	
CGSA-3	X		X
CGSA-4		X	X

One accelerometer system used three piezoresistive accelerometers manufactured by Endevco of San Juan Capistrano, California. The three accelerometers were used to measure each of the longitudinal, lateral, and vertical accelerations independently at a sample rate of 10,000 Hz. The accelerometers were configured with a range of ± 500 g's and controlled using a Diversified Technical Systems, Inc. (DTS) Sensor Input Module (SIM), Model TDAS3-SIM-16M manufactured by DTS of Seal Beach, California. The SIM was configured with 16 MB SRAM and 8 sensor input channels with 250 kB SRAM/channel. The SIM was mounted on a TDAS3-R4 module rack which was configured with isolated power/event/communications, 10BaseT Ethernet and RS232 communication, and an internal backup battery. The "DTS TDAS Control" computer software program and a customized Microsoft Excel worksheet were used to analyze and plot the accelerometer data.

A second system, SLICE 6DX, was a modular data acquisition system manufactured by DTS of Seal Beach, California. The acceleration sensors were mounted inside the body of the custom built SLICE 6DX event data recorder and recorded data at 10,000 Hz to the onboard microprocessor. The SLICE 6DX was configured with 7 GB of non-volatile flash memory, a range of ± 500 g's, a sample rate of 10,000 Hz, and a 1,650 Hz (CFC 1000) anti-aliasing filter. The "SLICEWare" computer software programs and a customized Microsoft Excel worksheet were used to analyze and plot the accelerometer data.

An additional system, Model EDR-3, was a triaxial piezoresistive accelerometer system manufactured by IST of Okemos, Michigan. The EDR-3 was configured with 256 kB of RAM, a range of ± 200 g's, a sample rate of 3,200 Hz, and a 1,120 Hz low-pass filter. The "DynaMax 1 (DM-1)" computer software program and a customized Microsoft Excel worksheet were used to analyze and plot the accelerometer data.

2.5.3 Pressure Tape Switches

Three pressure tape switches were spaced at approximately 3.3 ft (1 m) intervals for test nos. CGSA-1 and CGSA-2. The three tape switches were spaced at 18 in. (457 mm) intervals for test nos. CGSA-3 and CGSA-4. The pressure tape switches were placed near the end of the bogie track and used to determine the speed of the bogie just before the impact. As the left-front tire of the bogie passed over each tape switch, a strobe light was fired sending an electronic timing signal to the data acquisition system. The system recorded the signals and the time each occurred. The speed was then calculated using the spacing between the sensors and the time between the signals. Strobe lights and high-speed video analysis are used only as a backup in the event that vehicle speeds cannot be determined from the electronic data.

2.5.4 Photography Cameras

Two high-speed AOS VITcam digital video cameras were used to document each test. The high-speed AOS cameras each had a frame rate of 500 frames per second. One camera was placed laterally from the post, with a view perpendicular to the bogie's direction of travel. The other camera was focused on the base of the post, and was placed at various angles for the four tests. Additionally, a Nikon D50 digital camera was used to document pre-test and post-test conditions for each post.

2.6 End of Test Determination

During an impact, the data acquisition system records the accelerations that the bogie observes from all sources, not just the post. Thus, vibrations in the bogie vehicle, impact head, and accelerometer mounting assembly are also recorded and result in a high frequency acceleration trace. Since the bogie vehicle may still be vibrating after the impact event, the data

may extend beyond the failure of the post. For this reason, the end of the test needed to be defined.

In general, the end of test time was identified as the time that the acceleration trace subsided back toward zero and it was clear that the continuation of vibrations were not caused by the interaction with the post. Additionally, the test duration was limited by the bogie-post contact time so that there were no unreasonably long test durations. For each test, the high-speed video was used to establish the length of time that the bogie head was actually in contact with the post, and this time was then used to define the end of the test.

2.7 Data Processing

Initially the electronic accelerometer data was filtered using the SAE Class 60 Butterworth filter conforming to the SAE J211/1 specifications. The pertinent acceleration signal was extracted from the bulk of the data signals. The processed acceleration data was then multiplied by the mass of the bogie to get the impact force using Newton's Second Law. Next, the acceleration trace was integrated to find the change in velocity verses time. Initial velocity of the bogie, calculated from the pressure switch data, was then used to determine the bogie velocity. The calculated velocity trace was integrated to find the bogie's displacement. This displacement is also the displacement of the post at impact height. Combining the previous results, a force vs. deflection curve was plotted for each test. Finally, integration of the force vs. deflection curve provided the energy vs. deflection curve for each test.

3 COMPONENT TESTING RESULTS AND DISCUSSION

3.1 Results

Analysis of the bogie test results was focused on two main areas, material damage and force vs. deflection characteristics. Care was taken to document all system damage in the form of plastic deformation, tearing, fracture, and anchor pullout. Additionally, the accelerometer data was analyzed to obtain the force applied by the bogie vehicle impact and the deflection of the post at impact height. This data was then used to find total energy (the area under the force versus deflection curve) dissipated during each test. The forces, displacements, and energies described herein were calculated from the data recorded by the DTS unit for test nos. CGSA-1, CGSA-2, and CGSA-3. For test no. CGSA-4, the DTS system was not used, so the values were calculated from the DTS-SLICE data. Individual test results are provided in Appendix B for all accelerometers.

3.1.1 Test No. CGSA-1

For test no. CGSA-1, the post was connected to the base plate using a $\frac{5}{16}$ -in. (8-mm) fillet weld all around the base of the post. To anchor the post assembly, four 1-in. (25-mm) diameter threaded rods were epoxied into the tarmac with an embedment depth of 12 in. (305 mm). During test no. CGSA-1, the bogie impacted the post at a speed of 9.8 mph (15.8 km/h). As a result, the post rotated backward, and the bogie was eventually brought to a stop at a displacement of 21.7 in. (546 mm) as determined from the DTS data. Post-test inspection revealed that both the back flange and the web of the post had buckled and the base plate was bent upward. Although the weld held, the plate was torn adjacent to the weld on the front flange, and the tearing extended around the flange and 1 in. (25 mm) toward the back of the plate on both sides.

Force vs. deflection and energy vs. deflection curves were created from the DTS accelerometer data, as shown in Figure 12. Early in the impact event, a maximum resistance of 18.1 kips (80.5 kN) was recorded at 4.7 in. (119 mm) of deflection. Video analysis confirmed this peak force corresponded to the time just prior to the plate beginning to tear, or 0.034 seconds after impact. After the onset of tearing, the resistance force decreased and remained relatively constant. At the maximum deflection of 21.7 in. (551 mm), the post assembly had absorbed 191.7 k-in. (21.7 kJ) of energy. Time-sequential and post-impact photographs are shown in Figures 13 through 15.

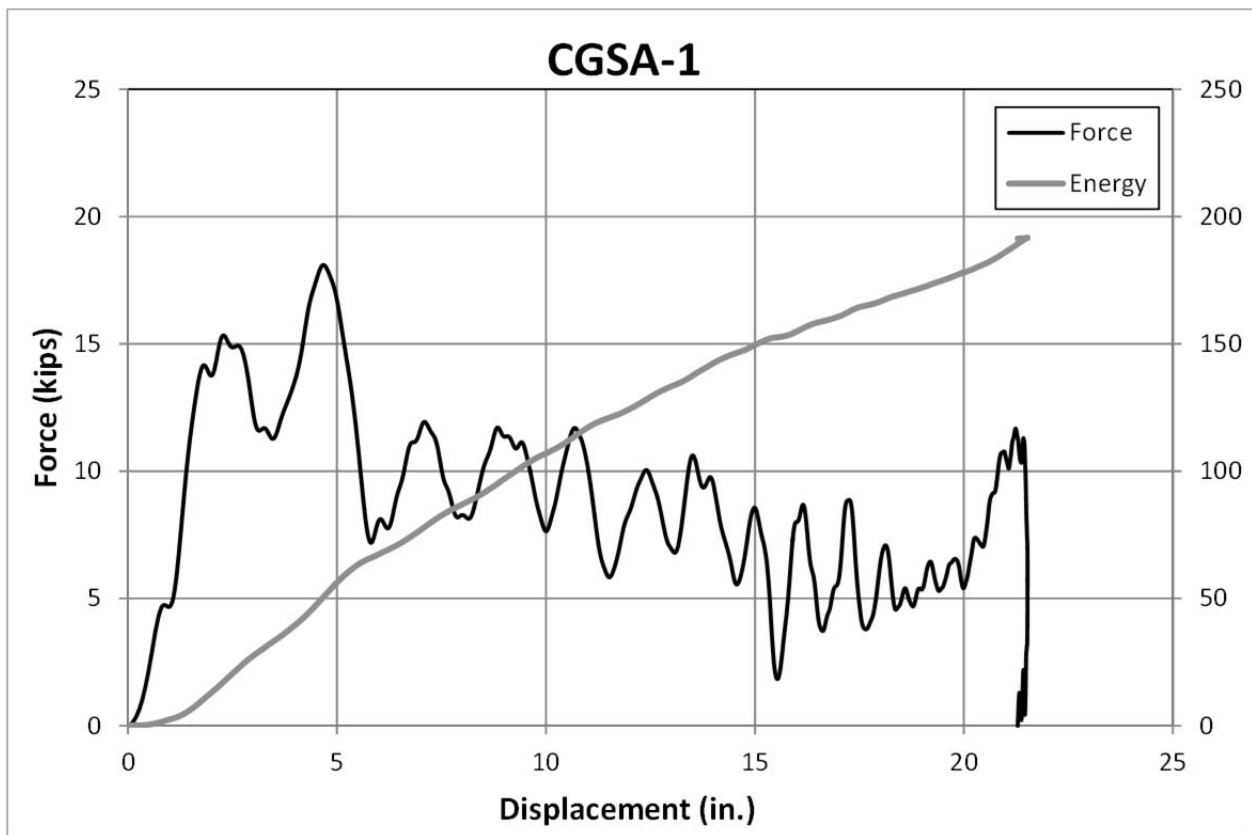
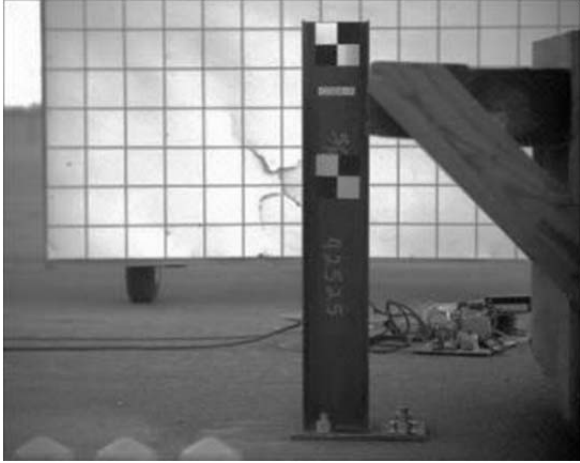


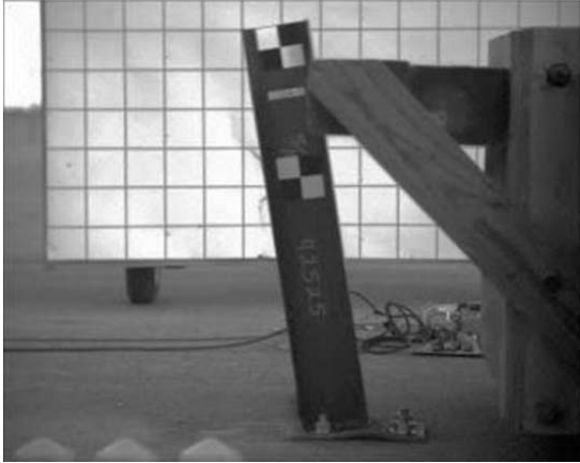
Figure 12. Force vs. Deflection and Energy vs. Deflection, Test No. CGSA-1



IMPACT



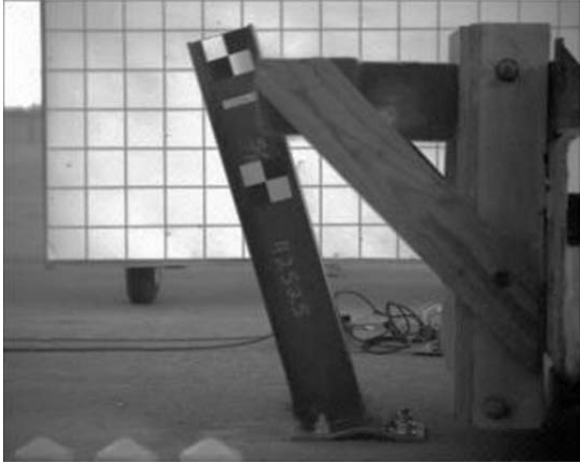
0.090 sec



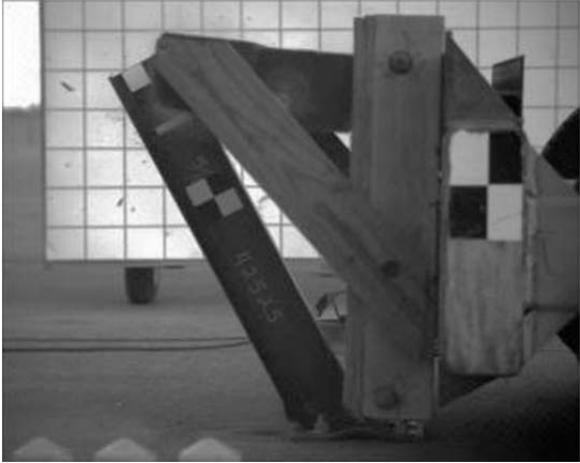
0.030 sec



0.120 sec

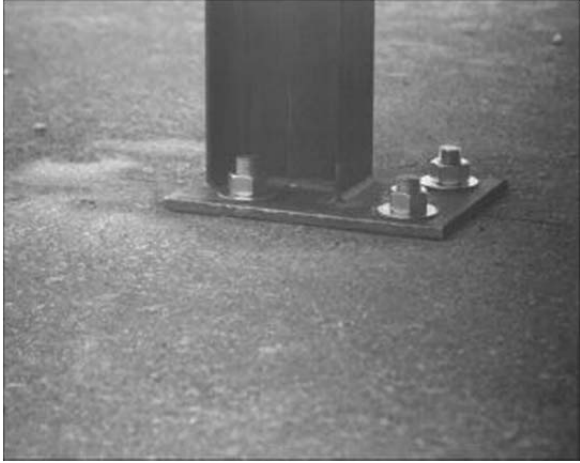


0.060 sec



0.150 sec

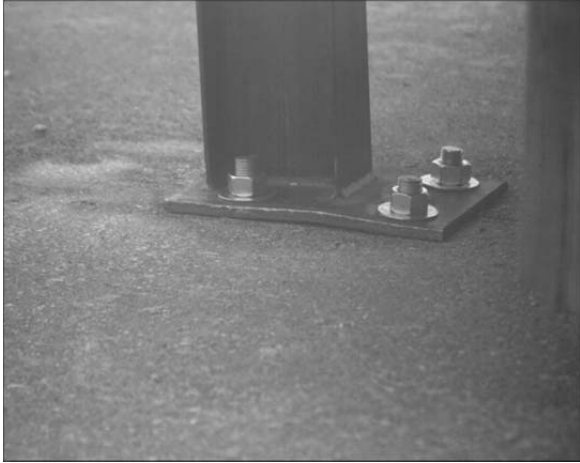
Figure 13. Time-Sequential Photographs, Test No. CGSA-1



IMPACT



0.036 sec



0.012 sec



0.048 sec



0.024 sec



0.060 sec

Figure 14. Time-Sequential Photographs, Test No. CGSA-1

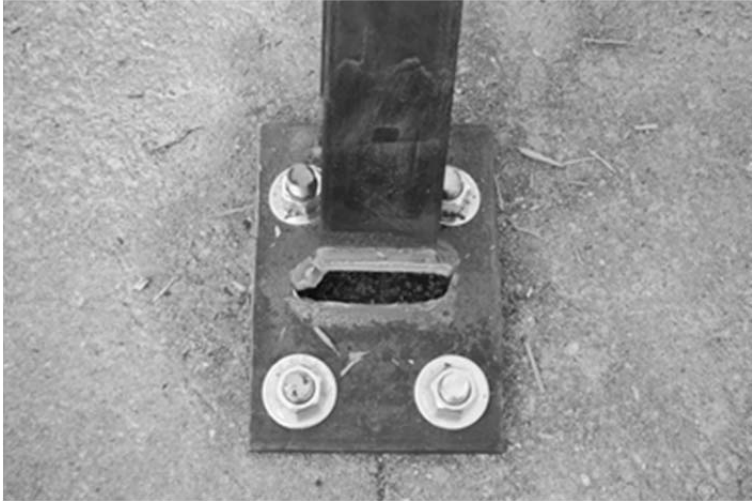
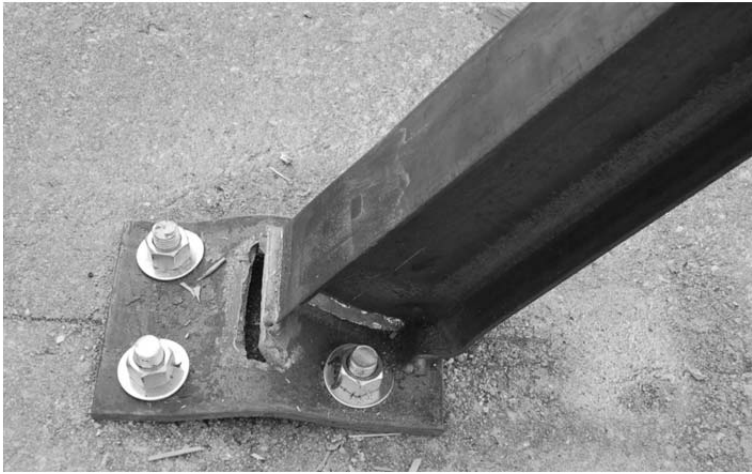


Figure 15. Post-Impact Photographs, Test No. CGSA-1

3.1.2 Test No. CGSA-2

For test no. CGSA-2, the post was connected to the base plate using a ¼-in. (6-mm) fillet weld all around the base of the post. To anchor the post assembly, four 1-in. (25-mm) diameter threaded rods were epoxied into the tarmac with an embedment depth of 12 in. (305 mm). During test no. CGSA-2, the bogie impacted the post at a speed of 9.6 mph (15.4 km/h). As a result, the post rotated backward, and the bogie eventually overrode the top of the post at a displacement of 23.2 in. (589 mm) as determined from the DTS data. Post-test examination revealed failure modes similar to test no. CGSA-1. The back flange of the post had buckled, and the plate was torn adjacent to the front flange weld and continued approximately ¾ in. (19 mm) backward on each side.

Force vs. deflection and energy vs. deflection curves were created from the DTS accelerometer data, as shown in Figure 16. Early in the impact event, a maximum force of 13.8 kips (61.4 kN) was recorded at a deflection of 5.0 in. (127 mm). Video analysis confirmed this peak force occurred just prior to the onset of plate tearing, or 0.030 seconds after impact. Once tearing began, the resistance force decreased and remained relatively constant. At a maximum deflection of 23.2 in. (589 mm), the post assembly had absorbed 183.2 k-in. (20.7 kJ) of energy. Time-sequential and post-impact photographs are shown in Figures 17 through 19.

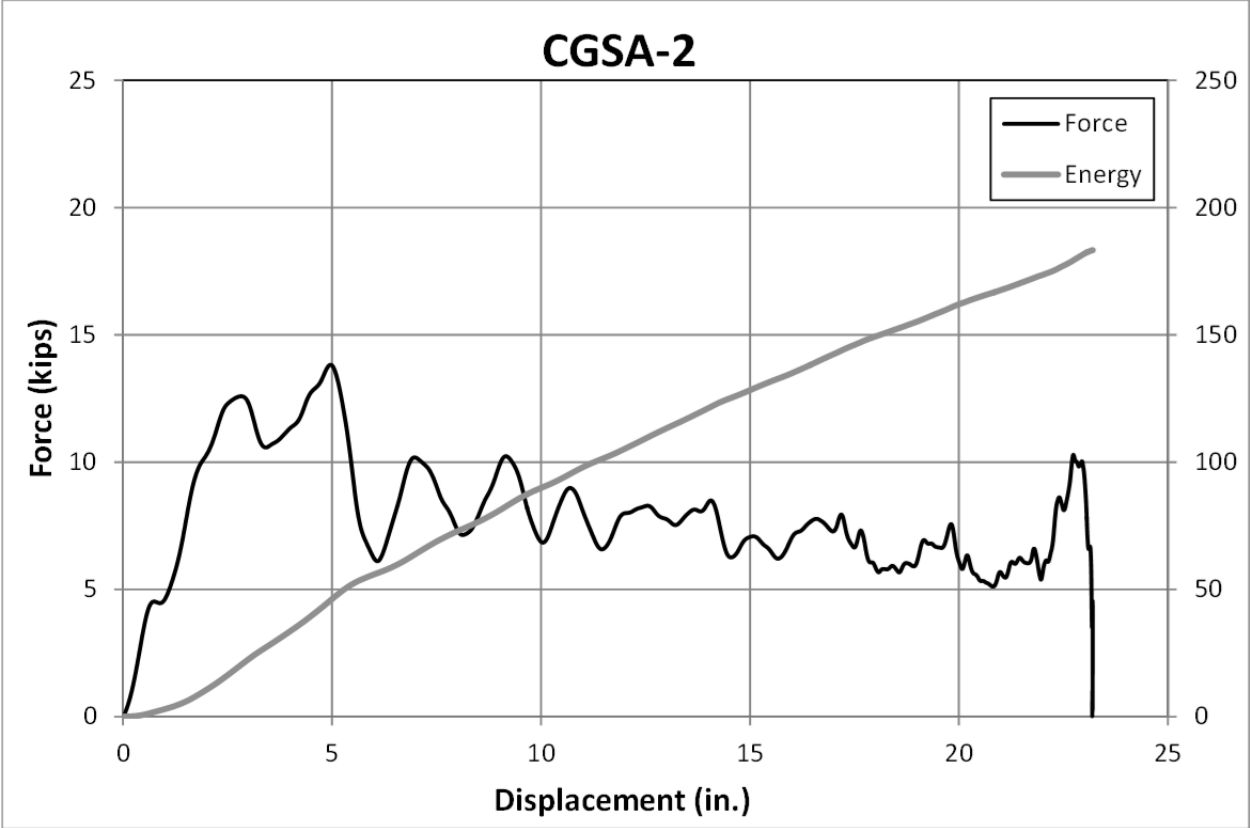
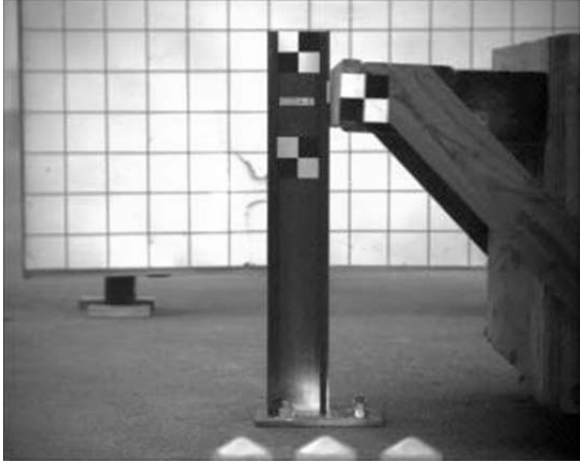
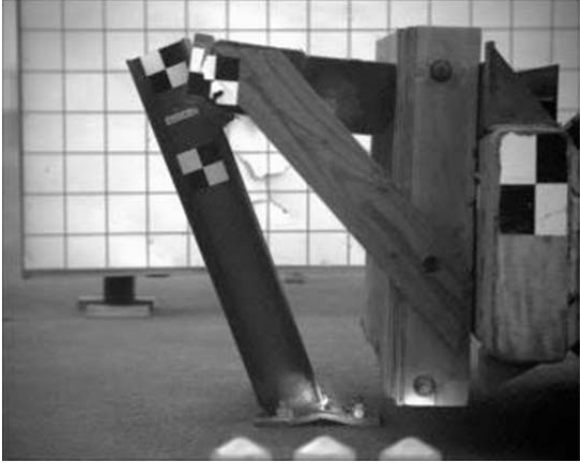


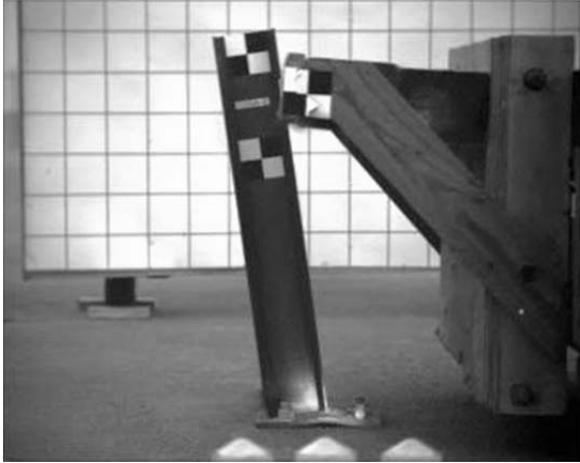
Figure 16. Force vs. Deflection and Energy vs. Deflection, Test No. CGSA-2



IMPACT



0.090 sec



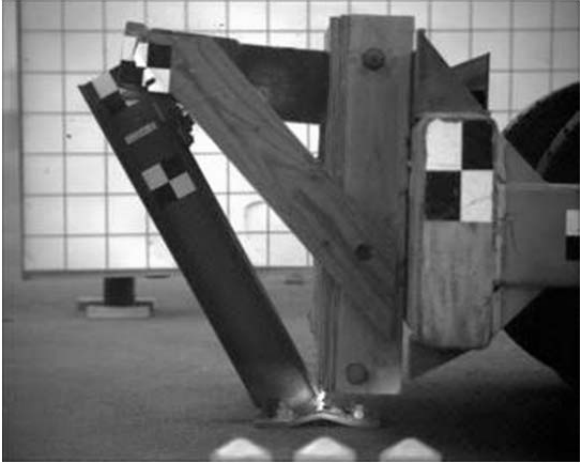
0.030 sec



0.120 sec



0.060 sec



0.150 sec

Figure 17. Time-Sequential Photographs, Test No. CGSA-2



IMPACT



0.090 sec



0.030 sec



0.120 sec



0.060 sec



0.150 sec

Figure 18. Time-Sequential Photographs, Test No. CGSA-2



Figure 19. Post-Impact Photographs, Test No. CGSA-2

3.1.3 Test No. CGSA-3

For test no. CGSA-3, the post was connected to the base plate using a $\frac{5}{16}$ -in. (8-mm) fillet weld all around the base of the post. To anchor the post assembly, four 1-in. (25-mm) diameter threaded rods were epoxied into the tarmac with an embedment depth of 6 in. (152 mm). During test no. CGSA-3, the bogie impacted the post at a speed of 9.7 mph (15.6 km/h). As a result, the post rotated backward, and the bogie eventually overrode the top of the post. At 0.020 sec after impact, concrete cracks began to form around the front anchor rods, and by 0.026 seconds, the anchor rods were pulled out of the concrete. The post assembly then rotated about the back of the plate causing the back anchors to bend. At approximately 0.150 seconds, the base of the bogie head impacted the post and caused the back anchor rods to pull out.

Force vs. deflection and energy vs. deflection curves were created from the DTS accelerometer data, as shown in Figure 20. Note, the curves only show the interaction forces and energies related to the primary impact. The plotted data was extracted prior to the secondary impact between the bottom of the bogie head and the base of the post. Early in the test, peak forces of 16.0 kips and 13.0 kips (71.2 kN and 57.8 kN) were recorded. Once the anchorage failed at approximately 5 in. (127 mm) of deflection, the resistance force decreased quickly and was nearly zero when the base of bogie impacted the post at 15.1 in. (384 mm) of deflection. Prior to this secondary impact, the assembly had absorbed 80.4 k-in. (9.1 kJ) of energy. Time-sequential and post-impact photographs are shown in Figures 21 through 23.

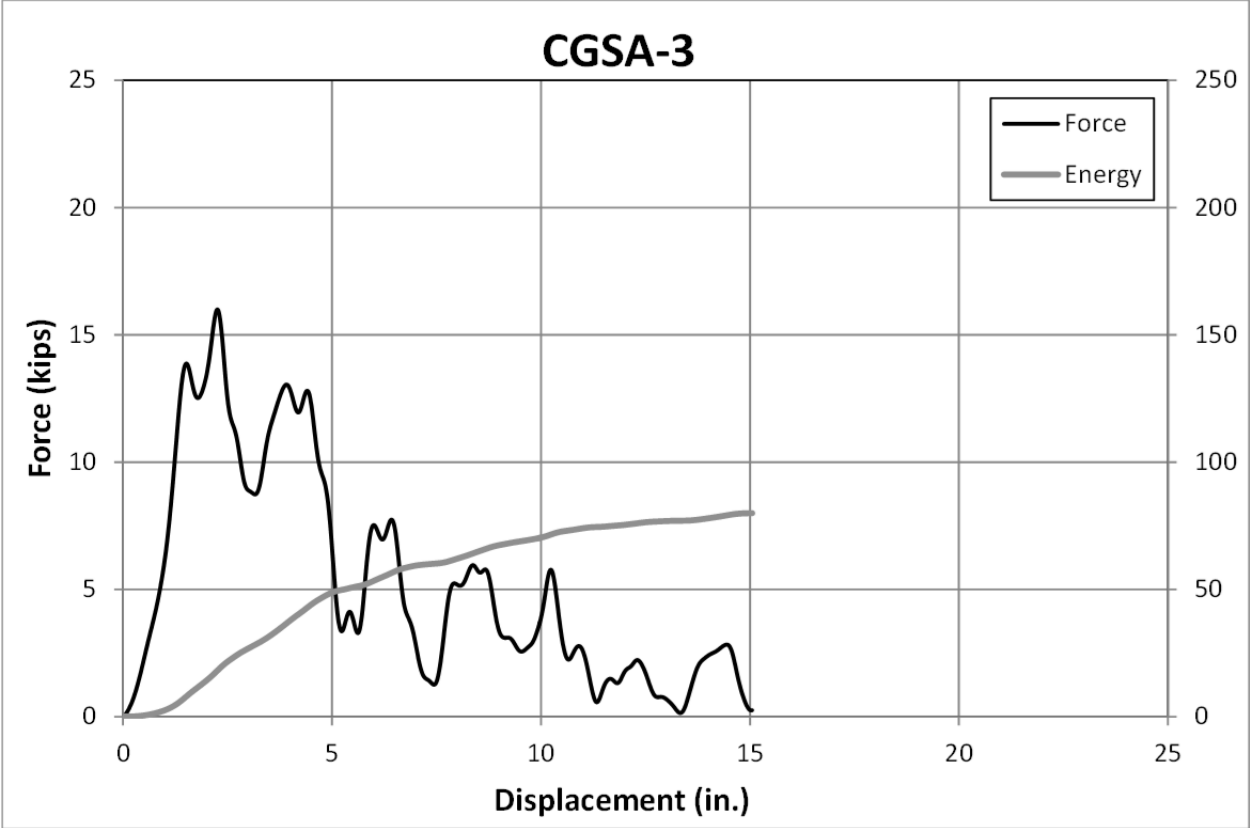
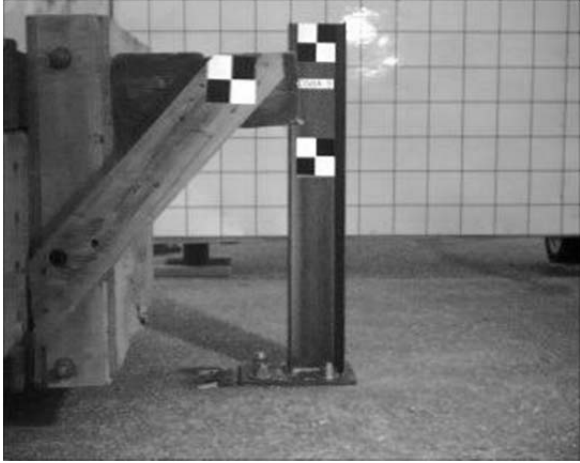


Figure 20. Force vs. Deflection and Energy vs. Deflection, Test No. CGSA-3



IMPACT



0.090 sec



0.030 sec



0.120 sec



0.060 sec



0.150 sec

Figure 21. Time-Sequential Photographs, Test No. CGSA-3



IMPACT



0.090 sec



0.030 sec



0.120 sec



0.060 sec



0.150 sec

Figure 22. Time-Sequential Photographs, Test No. CGSA-3



Figure 23. Post-Impact Photographs, Test No. CGSA-3

3.1.4 Test No. CGSA-4

For test no. CGSA-4, the post was connected to the base plate using a 3-pass, $\frac{5}{16}$ -in. (8-mm) fillet weld on the front flange and a single-pass $\frac{1}{4}$ -in. (6-mm) fillet weld on the web and back flange. To anchor the post assembly, four 1-in. (25-mm) diameter threaded rods were epoxied into the tarmac with an embedment depth of 8 in. (203 mm). During test no. CGSA-4, the bogie impacted the post at a speed of 11.6 mph (18.7 km/h). As a result, the post bent backward, and the bogie eventually overrode the top of the post at a displacement of 20.3 in. (516 mm) as determined from the DTS-SLICE data. Post-test examination revealed buckling of the back flange and web of the post along with bending of the base plate. No evidence of plate tearing or weld failure was present.

Force vs. deflection and energy vs. deflection curves were created from the DTS-SLICE accelerometer data, as shown in Figure 24. Early in the test, multiple force spikes of around 20 kips (89 kN) were recorded within the first 6 in. (152 mm) of deflection. The resistance force then steadily declined until the bogie overrode the post at a deflection of 20.3 in. (516 mm). The post assembly absorbed a total of 189.7 k-in. (21.4 kJ) of energy. Time-sequential and post-impact photographs are shown in Figures 25 through 27.

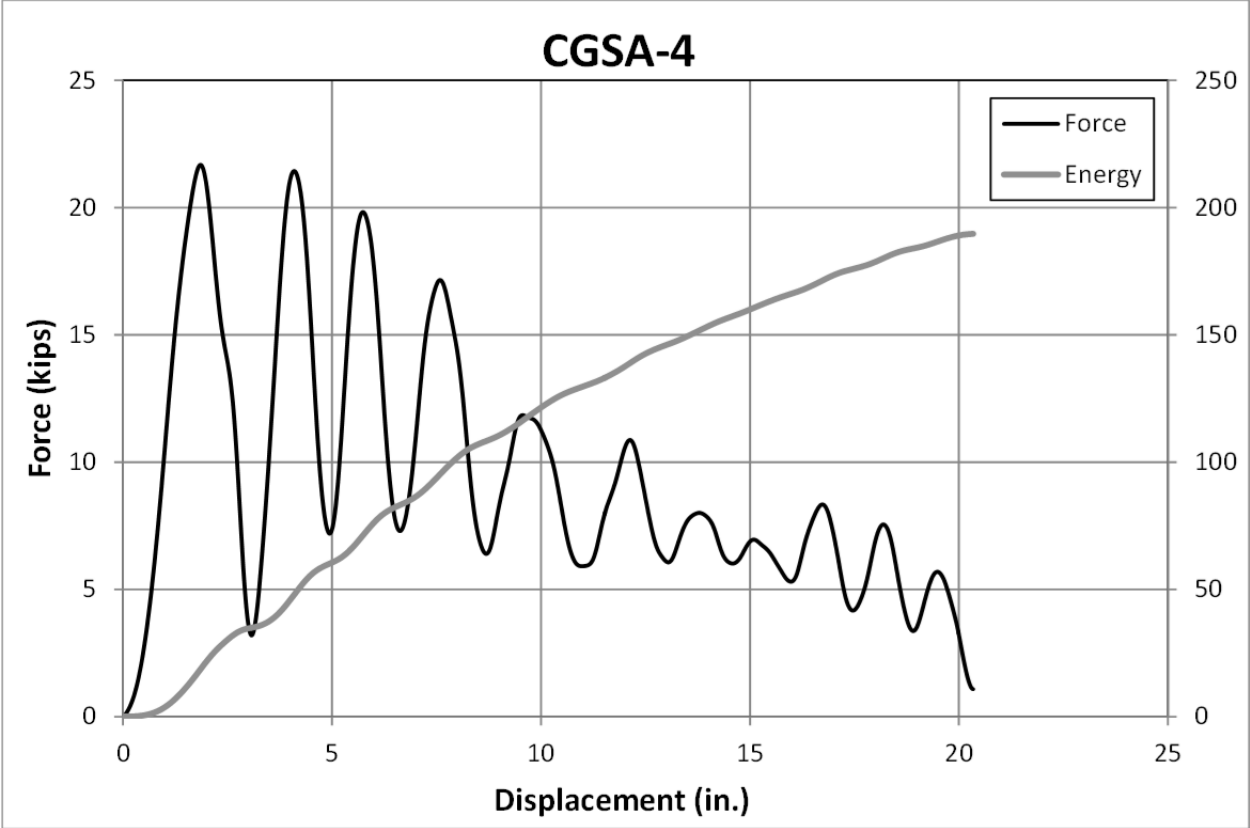
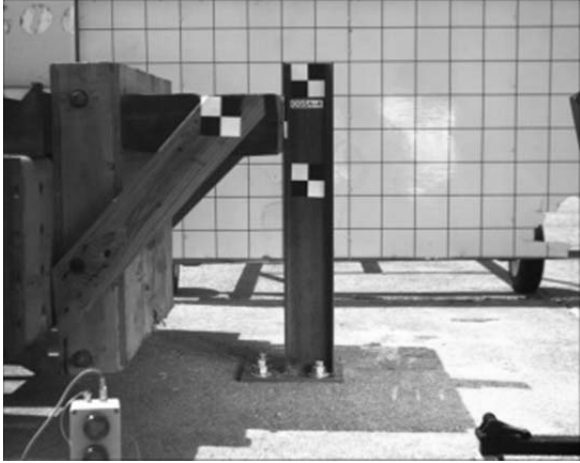


Figure 24. Force vs. Deflection and Energy vs. Deflection, Test No. CGSA-4



IMPACT



0.090 sec



0.030 sec



0.120 sec



0.060 sec



0.150 sec

Figure 25. Time-Sequential Photographs, Test No. CGSA-4



IMPACT



0.090 sec



0.030 sec



0.120 sec



0.060 sec



0.150 sec

Figure 26. Time-Sequential Photographs, Test No. CGSA-4

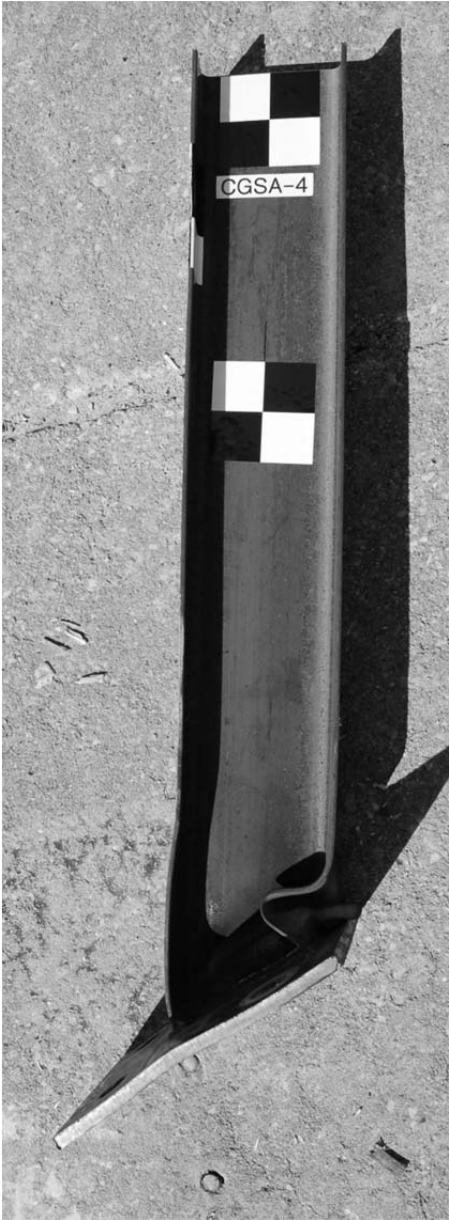


Figure 27. Post-Impact Photographs, Test No. CGSA-4

3.2 Discussion

Results from the bogie testing program are summarized in Table 3. Both the weld detail and the embedment depth of the anchors were shown to be critical for the attachment of guardrail posts to the culvert slab. Test nos. CGSA-1 and CGSA-2 attempted to simplify the weld on the front flange of the post by using single-pass $\frac{5}{16}$ -in. (8-mm) and $\frac{1}{4}$ -in. (6-mm) fillet welds, respectively. However, both tests resulted in large tears in the base plate adjacent to the weld on the front flange. In an effort to prevent plate tearing, the base plate material was changed from A36 to A572 Grade 50 for test nos. CGSA-3 and CGSA-4. Although plate tearing did not occur in the A572 plates, the anchor pullout failure of test no. CGSA-3 prevented a full analysis of the single-pass, $\frac{5}{16}$ -in. (8-mm) weld. As a result, only the 3-pass, $\frac{5}{16}$ -in. (8-mm) weld used in test no. CGSA-4 (same as the original system) has been proven effective in anchoring the guardrail post and preventing material fracture.

Table 3. Test Results from Bogie Testing Matrix

Test No.	Fillet Weld in. (mm)	Anchor Embedment in. (mm)	Impact Velocity mph (km/h)	Average Force kips (kN)			Primary Failure Mechanism
				@ 10 in.	@ 15 in.	@ 20 in.	
CGSA-1	$\frac{5}{16}$ (8)	12 (305)	9.8 (15.8)	10.7 (47.6)	10.0 (44.5)	8.9 (39.6)	Plate Tearing
CGSA-2	$\frac{1}{4}$ (6)	12 (305)	9.6 (15.4)	9.0 (40.0)	8.6 (38.3)	8.1 (36.0)	Plate Tearing
CGSA-3	$\frac{5}{16}$ (8)	6 (152)	9.7 (15.6)	7.0 (31.1)	5.3 (23.6)	NA	Anchor Pullout
CGSA-4	3-Pass $\frac{5}{16}$ (3-Pass 8)	8 (203)	11.6 (18.7)	12.1 (53.8)	10.7 (47.6)	9.5 (42.3)	Post Buckling

As mentioned in the previous paragraph, test no. CGSA-3 resulted in the epoxied anchor rods pulling out of the concrete. Thus, the 6-in. (152-mm) embedment depth was deemed too shallow to develop the full anchor load of the guardrail post attachment. Alternatively, the 8-in.

(203-mm) embedment depth utilized in test no. CGSA-4 provided the necessary anchorage strength throughout the duration of the test and showed no signs of premature failure. Therefore, the recommended minimum embedment depth for epoxied anchor rods was set as 8 in. (203 mm).

3.3 Comparison to Original Testing Results

Test no. CGSA-4 provided the desired anchorage results by preventing weld fracture, plate tearing, and anchor pullout. However, both the post and base plate utilized in test no. CGSA-4 were fabricated from steel materials with a minimum yield stress of 50 ksi (345 MPa), while the original system was fabricated and tested utilizing A36 steel components. Therefore, it was important to quantify any differences in resistance that results from the change in material grade.

The force vs. displacement and energy vs. displacement curves from the four bogie tests conducted for this study and the curves from the bogie test conducted in the original study, test no. KCB-7 [1], are shown in Figures 28 and 29, respectively. The 50-ksi (345-MPa) steel of test no. CGSA-4 resulted in higher peak forces of the first 8 in. (203 mm) of deflection. However, after 20 in. (508 mm) of deflection, there was only a 6 percent difference in the total energy absorbed between test nos. CGSA-4 and KCB-7. Thus, both post assemblies would be expected to perform similarly when used in a full-system installation. The use of either steel grade should be acceptable for use in the W-beam guardrail system attached to low-fill culverts.

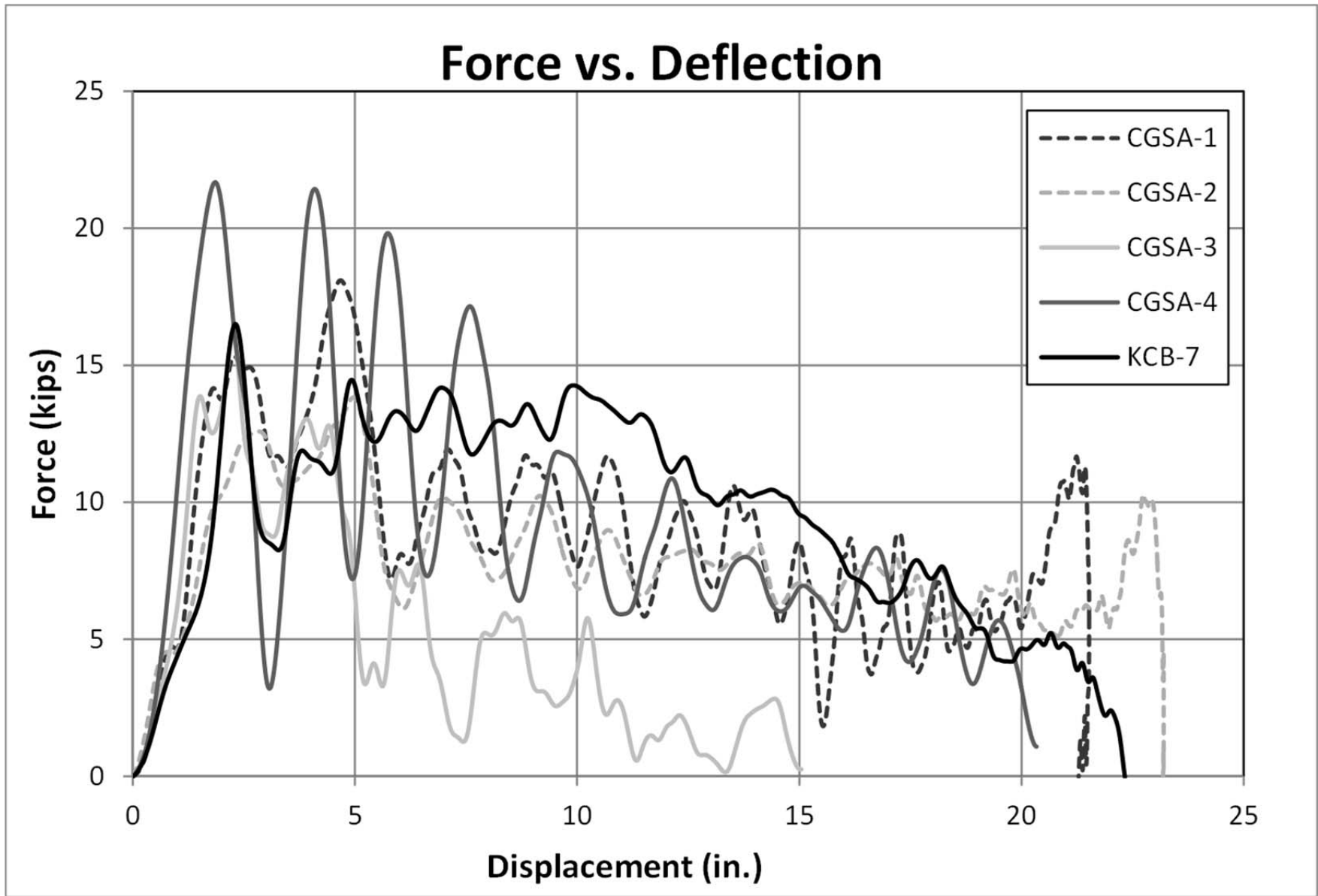


Figure 28. Comparison of Force vs. Deflection Curves

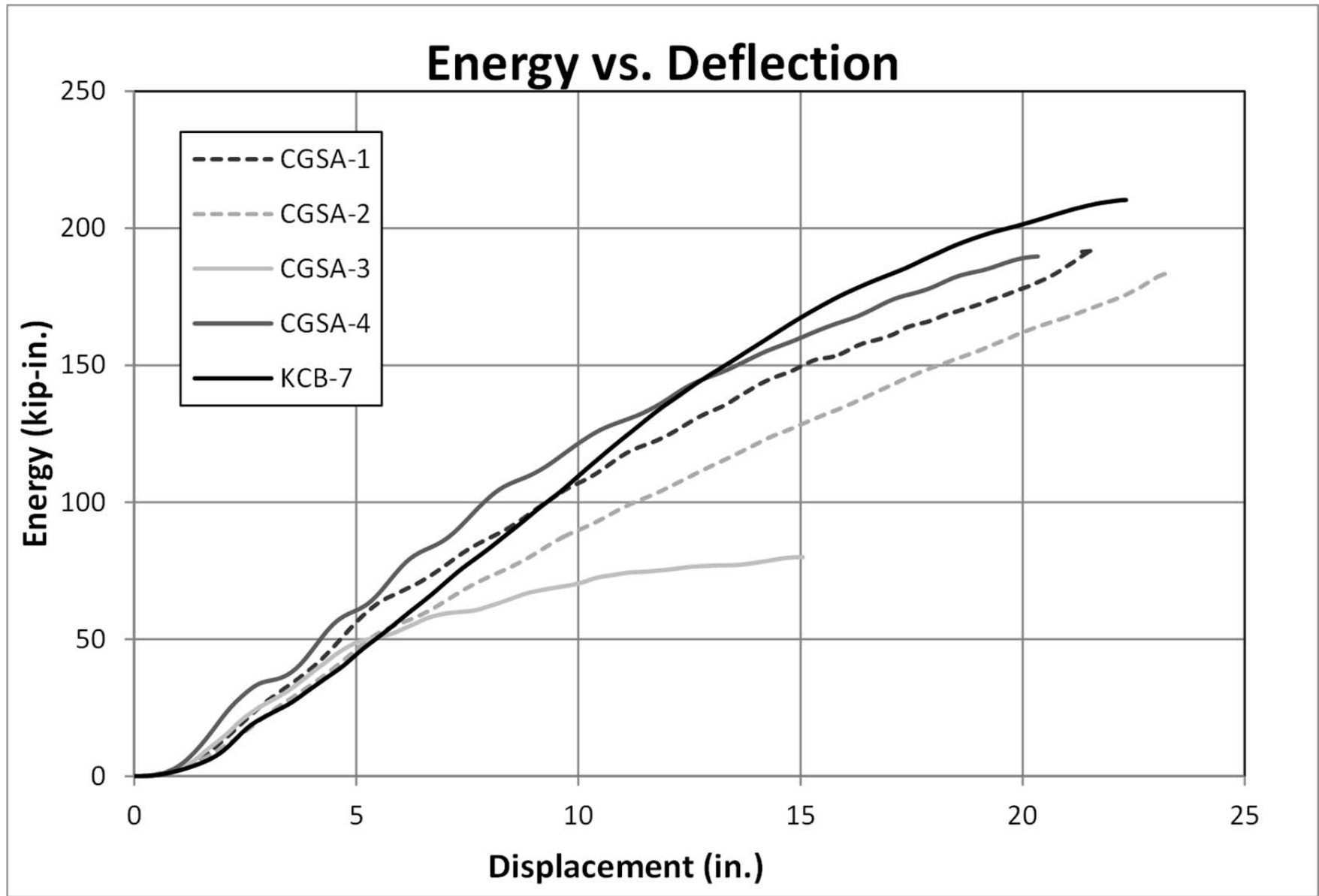


Figure 29. Comparison of Energy vs. Deflection Curves

4 SUMMARY, CONCLUSIONS, AND RECOMMENDATIONS

Two objectives were contained within this research effort to determine alternatives to the W-beam guardrail system for attachment to the top of low-fill culverts. The first objective was to determine if an alternative weld detail could be utilized to simplify the three-pass fillet weld on the front flange of the post. The second objective was to develop an epoxy anchor alternative to bolting through the top slab of the culvert. These system modifications were evaluated through a series of four dynamic, bogie tests conducted under the same impact conditions utilized in the original development study.

Both $\frac{1}{4}$ -in. and $\frac{5}{16}$ -in. (6-mm and 8-mm) fillet weld options were explored. However, both of these weld details resulted in large tears in the base plate adjacent to front flange of the post in test nos. CGSA-1 and CGSA-2. An attempt was made to utilize a 50-ksi (345-MPa) steel base plate with the $\frac{5}{16}$ -in. (8-mm) weld to prevent tearing, but the epoxy anchors failed during test no. CGSA-3 prior to the development of the full lateral resistance of the post assembly. Only test no. CGSA-4, which utilized the original weld details from the as-tested system, resisted the full impact load without component failure. Therefore, the recommended weld details for the post-to-base plate remain the same with a 3-pass, $\frac{5}{16}$ -in. (8-mm) fillet weld on the front flange and a $\frac{1}{4}$ -in. (6-mm) fillet weld on the web and back flange.

Although the simplified fillet weld details explored during this study resulted in component fractures, it is recognized that other weld options (e.g., full penetration welds) may provide adequate strength and durability. However, until these options are evaluated through similar dynamic tests, the use of alternative weld details remains unverified. Thus, MwRSF will continue to recommend the use of the original weld details for the post-to-plate assemblies.

The post assembly used in test no. CGSA-4 was fabricated from 50-ksi (345-MPa) steel with a minimum yield stress of 50 ksi (345 MPa) as opposed to the A36 components utilized in the original system. However, this variation in steel grades resulted in only minor changes to the resistance characteristics of the post. In fact, when comparing the test results between test nos. CGSA-4 and KCB-7 (conducted with A36 steel components during the original system development study), the total energy absorbed through 20 in. (508 mm) of deflection was found to differ by only 6 percent. Thus, a complete guardrail installation would be expected to perform similarly when using either steel grade for the post assembly. Subsequently, both ASTM A36 and Grade 50 steel post and base plate components are recommended for use in the W-beam guardrail attached to culvert slabs. This conclusion is significant because A36 components may be more difficult to find, and recent trends have shown that manufactures are supplying higher grade materials more frequently.

In evaluating the potential for an epoxied anchor option as opposed to the original through-bolt anchorage, tests were conducted utilizing Powers Fasteners AC100+ Gold epoxy and various embedment depths. Identical to the original system design, four 1-in. (25-mm) diameter, ASTM A307 threaded rods where used to anchor the base plate to the concrete tarmac. A 6-in. (152-mm) embedment depth was utilized in test no. CGSA-3, but the anchor rods were pulled out of the concrete during the impact event. Subsequently, the embedment depth was increased to 8 in. (203 mm) for test no. CGSA-4, and the anchors successfully held the impact load without any signs of failure. Therefore, it is recommended to utilize a minimum embedment depth of 8 in. (203 mm) when using the epoxy anchorage option instead of through-bolts.

The epoxy resin should have a minimum bond strength equal to or greater than that provided by the Powers Fasteners AC100+ Gold epoxy, 1,305 psi (9.0 MPa), and the epoxy

anchors should be installed according to manufacturer specifications. When the system is installed with the recommended minimum 10-in. (254-mm) offset between the post and the inside face of the headwall, anchor strength reductions due to edge effects are eliminated. However, for installations to a culvert without a headwall, a 12-in. (305-mm) offset is recommended between the epoxy anchors and the edge of the culvert. During installation, the culvert and drilled holes should be dry and free of dirt and debris to provide optimum conditions to develop the bond. Finally, the concrete should be in good condition (i.e., minimal cracking) and have a minimum compressive strength of 4,000 psi.

5 REFERENCES

1. Polivka, K.A., Faller, R.K., Sicking, D.L., Rohde, J.R., Reid, J.D., and Holloway, J.C., *NCHRP 350 Development and Testing of a Guardrail Connection to Low-Fill Culverts*, Report No. TRP-03-114-02, Midwest Roadside Safety Facility, University of Nebraska-Lincoln, November 1, 2002.
2. Ross, H.E., Sicking, D.L., Zimmer, R.A., and Michie, J.D., *Recommended Procedures for the Safety Performance Evaluation of Highway Features*, National Cooperative Highway Research Program (NCHRP) Report No. 350, Transportation Research Board, Washington, D.C., 1993.
3. Society of Automotive Engineers (SAE), *Instrumentation for Impact Test – Part 1 – Electronic Instrumentation*, SAE J211/1 MAR95, New York City, NY, July, 2007.

6 APPENDICES

Appendix A. Material Specifications

Table A-1. Material Certification List, Test Nos. CGSA-1 and CGSA-2

Description	Material Specifications and/or Grade	Material Reference
W6x9 [W152x13.4] Post, 37" [940] long	ASTM A992 Min. 50 ksi [345 MPa]	Heat No. 22603040
Base Plate, 1/2" x 8 1/2" x 12" [13x216x305]	ASTM A36	Heat No. JW1110217202
1" [25] dia.-UNC Threaded Rod, 14" [356] long	SAE J429 Grade 2 ASTM A307 Grade C ASTM F1554 Grade 36	CoC - 6/1/2009
1" [25] dia. Flat Washer	ASTM F844	CoC - 2/7/2011
1" [25] dia. - 8 UNC Nut	ASTM A563A	CoC - 6/1/2009
Powers Fasteners Epoxy - AC100+ Gold	Min. Bond Strength 1,305 psi	Lot# C117 Exp.: December 2012

52

Table A-2. Material Certification List, Test Nos. CGSA-3 and CGSA-4

Description	Material Specifications and/or Grade	Material Reference
W6x9 [W152x13.4] Post, 37" [940] long	ASTM A992 Min. 50 ksi [345 MPa]	Heat No. 22603040
Base Plate, 1/2" x 8 1/2" x 12" [13x216x305]	ASTM A36	Heat No. JW1110217202
1" [25] dia.-UNC Threaded Rod, 14" [356] long	SAE J429 Grade 2 ASTM A307 Grade C ASTM F1554 Grade 36	CoC - 6/1/2009
1" [25] dia. Flat Washer	ASTM F844	CoC - 2/7/2011
1" [25] dia. - 8 UNC Nut	ASTM A563A	CoC - 6/1/2009
Powers Fasteners Epoxy - AC100+ Gold	Min. Bond Strength 1,305 psi	C222/ APR13

53

Bill To:
 STEEL AND PIPE SUPPLY
 P.O. BOX 1688
 MANHATTAN
 66502

KS
 US

Ship To: 9
 STEEL AND PIPE SUPPLY
 401 NEW CENTURY PARKWAY
 GARDNER
 66031

KS
 US

Order Date: 07/21/2011
 PO No: 45/163465
 Mill Order No: 3912767
 Load No: 1392569
 Manifest No: 2088305

CERTIFIED MATERIAL TEST REPORT
 GERDAU AMERISTEEL
 Midlothian Mill
 300 Ward Road
 Midlothian, TX 76065

SPECIFICATIONS SIZE GRADE LENGTH PRODUCT
 ASTM A6-09, A992-06a, A572-07 W 6 X 9# / W150 X 13.5 992/572-50 20 FT / 6.096 M WF BEAMS

HEAT NO: 22603040

CHEMICAL ANALYSIS

C	Mn	P	S	Si	Cu	Ni	Cr	Mo	Sn	V	Al	Nb	CE
.06	.90	.026	.012	.23	.39	.08	.15	.028	.009	.002	.003	.018	.28

PHYSICAL PROPERTIES

<u>Yield Strength</u>		<u>Tensile Strength</u>		<u>Specimen Area</u>		<u>Elongation</u>		<u>Bend Test</u>	<u>ROA</u>
KSI	MPa	KSI	MPa	Sq In	Sq cm	%	Gage Length	Dia. Result	%
63.4	437.1	77.1	531.6	0.269	1.74	24.6	8 In 200 mm		
62.6	431.6	77.6	535.0	0.268	1.73	23.3	8 In 200 mm		

TENSILE TEST RATIOS

YLD/TENS	TENS/YLD	YLD/TENS	TENS/YLD
.82	1.22	.81	1.24

Remarks

MATERIAL COMPLIES WITH ASTM A709-50 & 50S FOR NON-TENSION COMPONENTS.

All manufacturing processes of this product, including electric arc MELTING and continuous CASTING, occurred in the U.S.A. CMTR complies with EN 10204 3.1

"I hereby certify that the contents of this report are correct and accurate. All tests and operations performed by this material manufacturer or its sub-contractors, when applicable, are in compliance with the requirements of the material spe

Signed: Tom L. Harrington Date: Aug. 17, 2011
 Tom L. Harrington: Quality Assurance Manager

Signed: _____ Date: _____
 Notary Public (if applicable)

Date: _____
 Page: 1 of 2

54

Figure A-1. W6x9 (W152x13.4) Steel Posts, Test Nos. CGSA-1 and CGSA-2

2100K
 Page 4 of 4
 Port 42945
 Aug 11
 G-176137



CARTERSVILLE STEEL MILL
 384 OLD GRASSDALE RD NE
 CARTERSVILLE GA 30121 USA
 (770) 387-3300

Chemical and Physical Test Report
 Made and Melted in USA

SHIP TO STEEL AND PIPE SUPPLY CO. INC. 1003 FORT GIBSON ROAD 918-266-6325 PORT CATOOSA, OK 74015	INVOICE TO STEEL AND PIPE SUPPLY CO. INC. PO BOX 1688 MANHATTAN, KS 66505-1688	SHIP DATE 05/20/11 CUST. ACCOUNT NO 40130833
---	--	---

PRODUCED IN: CARTERSVILLE

SHAPE + SIZE	GRADE	SPECIFICATION	SALES ORDER	CUST P.O. NUMBER
W6 X 2#	A57250/992	ASTM A572 GR50-07, ASTM A992 -06A, ASTM A709 GR50-10	1036171-01	4500150641-01
HEAT I.D.	C Mn P S Si Cu Ni Cr Mo V B N Sn Al Ti Ca Zn C Eqr			
G112783	.09 1.16 .009 .019 .28 .25 .08 .04 .023 .033 .0006 .0097 .009 .001 .00100 .00000 .00120 .37			

Mechanical Test: Yield 54700 PSI, 377.14 MPA Tensile: 70300 PSI, 484.7 MPA %E: 24.5/8in, 24.5/200MM
 Customer Requirements CASTING: STRAND CAST
 Comment: NO WELD REPAIRMENT PERFORMED. STEEL NOT EXPOSED TO MERCURY.
 Mechanical Test: Yield 54200 PSI, 373.7 MPA Tensile: 70000 PSI, 482.63 MPA %E: 27.5/8in, 27.5/200MM
 Customer Requirements CASTING: STRAND CAST
 Comment: NO WELD REPAIRMENT PERFORMED. STEEL NOT EXPOSED TO MERCURY.

PRODUCED IN: CARTERSVILLE

SHAPE + SIZE	GRADE	SPECIFICATION	SALES ORDER	CUST P.O. NUMBER
W6 X 9#	A57250/992	ASTM A572 GR50-07, ASTM A992 -06A, ASTM A709 GR50-10	1025598-20	4500157482-20
HEAT I.D.	C Mn P S Si Cu Ni Cr Mo V Nb B N Sn Al Ti Ca Zn C Eqr			
G113099	.17 .93 .015 .027 .22 .30 .09 .09 .025 .016 .001 .0004 .0078 .011 .001 .00100 .00060 .00160 .41			

Mechanical Test: Yield 54600 PSI, 376.45 MPA Tensile: 75700 PSI, 521.93 MPA %E: 20.4/8in, 20.4/200MM
 Customer Requirements CASTING: STRAND CAST
 Comment: NO WELD REPAIRMENT PERFORMED. STEEL NOT EXPOSED TO MERCURY.
 Mechanical Test: Yield 55000 PSI, 379.21 MPA Tensile: 77300 PSI, 532.96 MPA %E: 22.3/8in, 22.3/200MM
 Customer Requirements CASTING: STRAND CAST
 Comment: NO WELD REPAIRMENT PERFORMED. STEEL NOT EXPOSED TO MERCURY.

Customer Notes

NO WELD REPAIRMENT PERFORMED. STEEL NOT EXPOSED TO MERCURY.
 All manufacturing processes including melt and cast, occurred in USA. MTR complies with EN10204 3.1B

THE ABOVE FIGURES ARE CERTIFIED CHEMICAL AND PHYSICAL TEST RECORDS AS CONTAINED IN THE PERMANENT RECORDS OF COMPANY.

Shaskar
 Bhaskar Yalamanchili
 Quality Director
 Gerdau Ameristeel

Zurkey
 Metallurgical Services Manager
 CARTERSVILLE STEEL MILL

Seller warrants that all material furnished shall comply with specifications subject to standard published manufacturing variations. NO OTHER WARRANTIES, EXPRESSED OR IMPLIED, ARE MADE BY THE SELLER, AND SPECIFICALLY EXCLUDED ARE WARRANTIES OF MERCHANTABILITY AND FITNESS FOR A PARTICULAR PURPOSE. In no event shall seller be liable for indirect, consequential or punitive damages arising out of or related to the materials furnished by seller. Any claim for damages for materials that do not conform to specifications must be made from buyer to seller immediately after delivery of same in order to allow the seller the opportunity to inspect the material in question.

55

Figure A-2. W6x9 (W152x13.4) Steel Posts, Test Nos. CGSA-3 and CGSA-4

MWRSF Report No. TRP-03-278-13
 August 12, 2013

SOLD STEEL & PIPE SUPPLY CO INC
 PO BOX 1688
 TO: MANHATTAN, KS 66502-1688



CERTIFIED MILL TEST REPORT

Ship from:
 Nucor Steel - Texas
 8812 Hwy 79 W
 JEWETT, TX 75846
 800-527-6445

Date: 12-Apr-2011
 B.L. Number: 568696
 Load Number: 181752

SHIP STEEL & PIPE
 1003 FORT GIBSON
 TO: CATOOSA, OK 00000-

Material Safety Data Sheets are available at www.nucorbar.com or by contacting your inside sales representative.

NBMG-08 March 9, 2011

HEAT NUM. *	DESCRIPTION	PHYSICAL TESTS				CHEMICAL TESTS										
		YIELD P.S.I.	TENSILE P.S.I.	ELONG % IN 8"	BEND	WT% DEF	C	Ni	Mn	Cr	P	S	Si	Cu	Sn	C.E.
PO# => 4500157212																
JW0910611902	Nucor Steel - Texas 3-1/2x2-1/2x1/4" Angle 20' A36 ASTM A36/A36M-08, A709/709M-09a GR36, ASME SA36-07 Ed 09 Ad	49,400 341MPa	70,800 488MPa	25.0%			.12 .15	.79 .17		.019 .038	.040 .004	.21 .002	.45		.33	
PO# => 4500157651																
JW1110216701	Nucor Steel - Texas 3/4x10" Flat 20' A36 ASTM A36/A36M-08, A709/A709M-09a GR36, ASME SA36-07 Ed 09 Ad ASTM A709/A709M-08 GR 36 ASME SA36-2007 EDITION-2009 ADDE NDA	44,200 305MPa	65,600 452MPa	23.0%			.10 .17	.82 .10	.008 .041	.030 .002	.18 .001	.34		.30		
PO# => 4500157651																
JW1110217202	Nucor Steel - Texas 1/2x12" Flat 20' A36 ASTM A36/A36M-08, A709/A709M-09a GR36, ASME SA36-07 Ed 09 Ad ASTM A709/A709M-08 GR 36 ASME SA36-2007 EDITION-2009 ADDE NDA	46,900 323MPa	69,000 476MPa	26.0%			.12 .15	.81 .16	.013 .049	.040 .003	.20 .001	.31		.33		

I hereby certify that the material described herein has been manufactured in accordance with the specifications and standards listed above and that it satisfies those requirements.
 1.) Weld repair was not performed on this material.
 2.) Melted and Manufactured in the United States.
 3.) Mercury, Radium, or Alpha source materials in any form have not been used in the production of this material.

QUALITY ASSURANCE: Nathan Stewart

56

Figure A-3. 1/2-in. (13-mm) Thick Base Plate, Test Nos. CGSA-1 and CGSA-2

11-20
 Pails 44114
 Sept, 11



MILL TEST CERTIFICATE

3700 HOLY RD N.E.
 Tuscaloosa, AL 35404-1000
 800-827-8872

Page #: 1 of 1

Load Number	Tally	Mill Order Number	P.O. Number	Part Number	Certificate Number	Date															
386513	0000000410154	N-105963-007	4500156614		L325787-1	05/19/2011 08:58															
Grade				Customer:																	
Order Description: A572/A709, 0.5000 IN x 96.000 IN x 240.000 IN				Sold TO: STEEL & PIPE SUPPLY CO., INC. MANHATTAN KS																	
Quality Plan Description: A57250/A70950: ASTM A572-07 GR 50/A709-08 GR 50				Ship TO: Kansas City Warehouse New Century KS																	
Shipped Item	Heat/Slab Number	Certified By	C	Mn	P	S	Si	Cu	Ni	Cr	Mo	Cb	V	Al	Ti	N2	B	Ca	Sn	CEV	
1E0881C	B1R6601-01 ***	B1R6601	0.06	1.18	0.007	0.005	0.06	0.27	0.08	0.06	0.019	0.000	0.047	0.033	0.001	0.009	0.0001	0.0029	0.009	0.31	
Shipped Item	Certified By	Heat Number	Yield ksi	Tensile ksi	Y/T %	ELONGATION %		Bend OK?	Hard HB	Charpy Impacts (ft-lbf)				Shear %				Test Temp			
						2"	8"			Size mm	1	2	3	Avg	1	2	3		Avg		
1E0881C	S1E0881FTT	B1R6601 ***	54.8	68.6	79.9	38.8															
1E0881C	S1E0881MTT	B1R6601 ***	65.6	74.8	87.7	31.5															

Items: 1 PCS: 8 Weight: 26137 LBS

Mercury has not come in contact with this product during the manufacturing process nor has any mercury been used by the manufacturing process. Certified in accordance with EN 10204 3.1. No weld repair has been performed on this material. Manufactured to a fully killed fine grain practice. ** Produced from Coil ** ISO 9001:2008 Registered, PED Certified

*** Indicates Heats melted and Manufactured in the U.S.A.

We hereby certify that the product described above passed all of the tests required by the specifications.

April Pitts
 April Pitts - QA Engineer

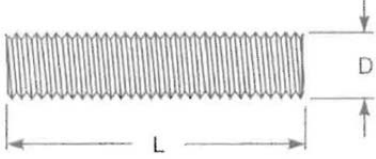
57

Figure A-4. 1/2-in. (13-mm) Thick Base Plate, Test Nos. CGSA-3 and CGSA-4

Page 1 of 2	Fastenal Product Standard	REV-03
Date: December 1, 2010	FASTENAL	TROD.LC.Z

Threaded Rod, Low Carbon, Zinc Plated

The information below lists the required dimensional, chemical and physical characteristics of the products in this purchase order. If the order received does not meet these requirements, it may result in a supplier corrective action request, which could jeopardize your status as an approved vendor. Unless otherwise specified, all referenced consensus standards must be adhered to in their entirety.



Diameter	Nominal Size	D (Major Diameter)	
		Max.	Min.
4-40 *	.1120	.1112	.1061
6-32 *	.1380	.1372	.1312
8-32 *	.1640	.1631	.1571
10-24 *	.1900	.1890	.1818
10-32 *	.1900	.1891	.1831
12-24 *	.2160	.2150	.2078
1/4-20	.2500	.2489	.2367
1/4-28	.2500	.2490	.2392
5/16-18	.3125	.3113	.2982
5/16-24	.3125	.3114	.3006
3/8-16	.3750	.3737	.3595
3/8-24	.3750	.3739	.3631
7/16-14	.4375	.4361	.4206
7/16-20	.4375	.4362	.4240
1/2-13	.5000	.4985	.4822
1/2-20	.5000	.4987	.4865
9/16-12	.5625	.5609	.5437
9/16-18	.5625	.5611	.5480
5/8-11	.6250	.6233	.6051
5/8-18	.6250	.6236	.6105
3/4-10	.7500	.7482	.7288
3/4-16	.7500	.7485	.7343
7/8-9	.8750	.8731	.8523
7/8-14	.8750	.8734	.8579
1-8	1.000	.9980	.9755
1-14 *	1.000	.9984	.9881
1 1/8-7	1.125	1.1228	1.0982
1 1/8-12	1.125	1.1232	1.1060
1 1/4-7	1.250	1.2478	1.2232
1 1/4-12	1.250	1.2482	1.2310
1 3/8-6	1.375	1.3726	1.3453
1 1/2-6	1.500	1.4976	1.4703
1 1/2-12	1.500	1.4981	1.4809
1 3/4-5	1.750	1.7473	1.7165
2-4.5	2.000	1.9971	1.9641

* Class 2A threads shall be used for sizes where 1A is not applicable

Length	Tolerance
3'	+/- 1/4"
6' - 12'	+/- 1/2"

Length shall be measured form end to end

Page 2 of 2	Fastenal Product Standard	REV-03
Date: December 1, 2010	FASTENAL	TROD.LC.Z

Specification Requirements:

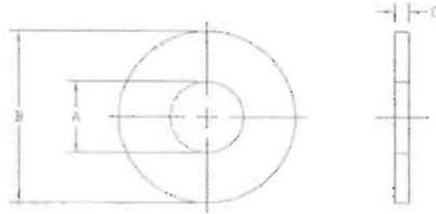
- Standard: ASME B18.31.3
- Material &
- Mechanical Properties: ASTM A307, Grade A
- Thread requirements: Roll threaded to ASME, B1.1 UNC & UNF, and UNS Class 1A.
- Coating: Fe/Zn 3AT Per ASTM F1941

Figure A-5. 1-in. (25-mm) Diameter Threaded Rods, Test Nos. CGSA-1 through 4

Page 1 of 1	Fastenal Product Standard	REV-01
Date: February 7, 2011	FASTENAL	FW.LC.USS.Z

Flat Washers, Low Carbon, USS, Zinc Plated

The information below lists the required dimensional, chemical and physical characteristics of the products in this purchase order. If the order received does not meet these requirements, it may result in a supplier corrective action request, which could jeopardize your status as an approved vendor. Unless otherwise specified, all referenced consensus standards must be adhered to in their entirety.



USS Flat Washers									
Nominal Washer Size	A			B			C		
	Inside Diameter			Outside Diameter			Thickness		
	Basic	Tolerance		Basic	Tolerance		Basic	Max	Min
		Plus	Minus		Plus	Minus			
3/16	.250	.015	.005	.562	.015	.005	.049	.065	.036
1/4	.312	.015	.005	.734	.015	.007	.065	.080	.051
5/16	.375	.015	.005	.875	.030	.007	.083	.104	.064
3/8	.438	.015	.005	1.000	.030	.007	.083	.104	.064
7/16	.500	.015	.005	1.250	.030	.007	.083	.104	.064
1/2	.562	.015	.005	1.375	.030	.007	.109	.132	.086
9/16	.625	.015	.005	1.469	.030	.007	.109	.132	.086
5/8	.688	.030	.007	1.750	.030	.007	.134	.160	.108
3/4	.812	.030	.007	2.000	.030	.007	.148	.177	.122
7/8	.938	.030	.007	2.250	.030	.007	.165	.192	.136
1	1.062	.030	.007	2.500	.030	.007	.165	.192	.136
1-1/8	1.250	.030	.007	2.750	.030	.007	.165	.192	.136
1-1/4	1.375	.030	.007	3.000	.030	.007	.165	.192	.136
1-3/8	1.500	.045	.010	3.250	.045	.010	.180	.213	.153
1-1/2	1.625	.045	.010	3.500	.045	.010	.180	.213	.153
1-5/8	1.750	.045	.010	3.750	.045	.010	.180	.213	.153
1-3/4	1.875	.045	.010	4.000	.045	.010	.180	.213	.153
1-7/8	2.000	.045	.010	4.250	.045	.010	.180	.213	.153
2	2.125	.045	.010	4.500	.045	.010	.180	.213	.153
2-1/4	2.375	.045	.010	4.750	.045	.010	.220	.248	.193
2-1/2	2.625	.045	.010	5.000	.045	.010	.238	.280	.210
2-3/4	2.875	.065	.010	5.250	.065	.010	.259	.310	.228
3	3.125	.065	.010	5.500	.065	.010	.284	.327	.249

Specification Requirements:

- Dimensions: ASME B18.21.1, Type A Plain Washers.
- Material: Carbon steel.
- Coating: ASTM B633, SC1, Type III.

Figure A-6. 1-in. (25-mm) Flat Washers, Test Nos. CGSA-1 through 4

Fastenal Product Standard: FNL.FHN.GRA.Z

Finished Hex Nuts, Grade A, Zinc Plated

The information below lists the required dimensional, chemical and physical characteristics of the products in this purchase order. If the order received does not meet these requirements, it may result in a supplier corrective action request, which could jeopardize your status as an approved vendor. Unless otherwise specified, all referenced consensus standards must be adhered to in their entirety.



Nominal Size	F		G		H	
	Width Across Flats		Width Across Corners		Thickness	
	Max.	Min.	Max.	Min.	Max.	Min.
1/4	.438	.428	.505	.488	.226	.212
5/16	.500	.489	.577	.557	.273	.258
3/8	.563	.551	.650	.628	.337	.320
7/16	.688	.675	.794	.768	.385	.365
1/2	.750	.736	.866	.840	.448	.427
9/16	.875	.861	1.010	.982	.496	.473
5/8	.938	.922	1.083	1.051	.559	.535
3/4	1.125	1.088	1.299	1.240	.665	.617
7/8	1.312	1.269	1.516	1.447	.776	.724
1	1.500	1.450	1.732	1.653	.887	.831
1 1/8	1.688	1.631	1.949	1.859	.999	.939
1 1/4	1.875	1.812	2.165	2.066	1.094	1.030
1 3/8	2.062	1.994	2.382	2.273	1.206	1.138
1 1/2	2.250	2.175	2.598	2.480	1.317	1.245
1 5/8	2.43	2.35	2.805	2.679	1.416	1.364
1 3/4	2.625	2.538	3.031	2.893	1.540	1.460
1 7/8	2.813	2.722	3.247	3.103	1.651	1.567
2	3.000	2.900	3.464	3.306	1.763	1.675
2 1/4	3.375	3.263	3.897	3.719	1.986	1.890
2 1/2	3.750	3.625	4.330	4.133	2.209	2.105
2 3/4	4.125	3.988	4.763	4.546	2.431	2.319
3	4.5	4.350	5.196	4.959	2.654	2.534

Specification Requirements:

- Dimensions: ASME B18.2.2 for 1/4" thru 1 1/2"
Over 1 1/2" see dimensions above and FIM limits to the ASME B18.2.2 Heavy Hex Nut Standard
- Material &
- Mechanical Properties: Grade A per ASTM A563 for 1/4" to 1 1/2".
For sizes over 1 1/2, hardness test only to HRB-68 to HRC-32
- Thread requirements: ANSI B1.1 UNC & UNF Class 2B
- Finish: Fe/Zn 3AT Per ASTM F1941

Figure A-7. 1-in. (25-mm) Hex Nuts, Test Nos. CGSA-1 through 4

Appendix B. Bogie Test Results

The results of the recorded data from each accelerometer used during each dynamic bogie test are provided in the summary sheets found in this appendix. Summary sheets include acceleration, velocity, and displacement versus time plots as well as force and energy versus displacement plots.

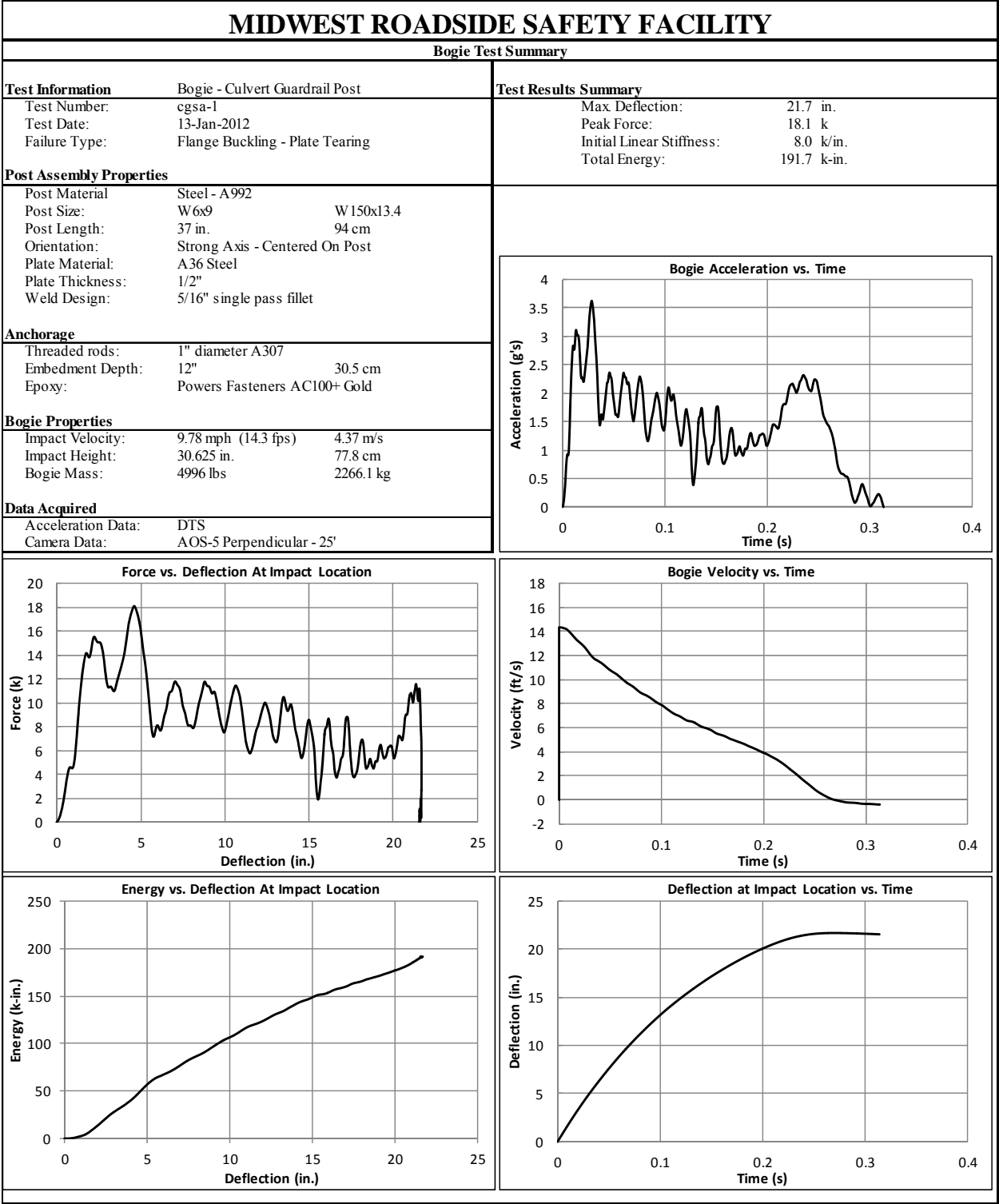


Figure B-1. Results of Test No. CGSA-1 (DTS)

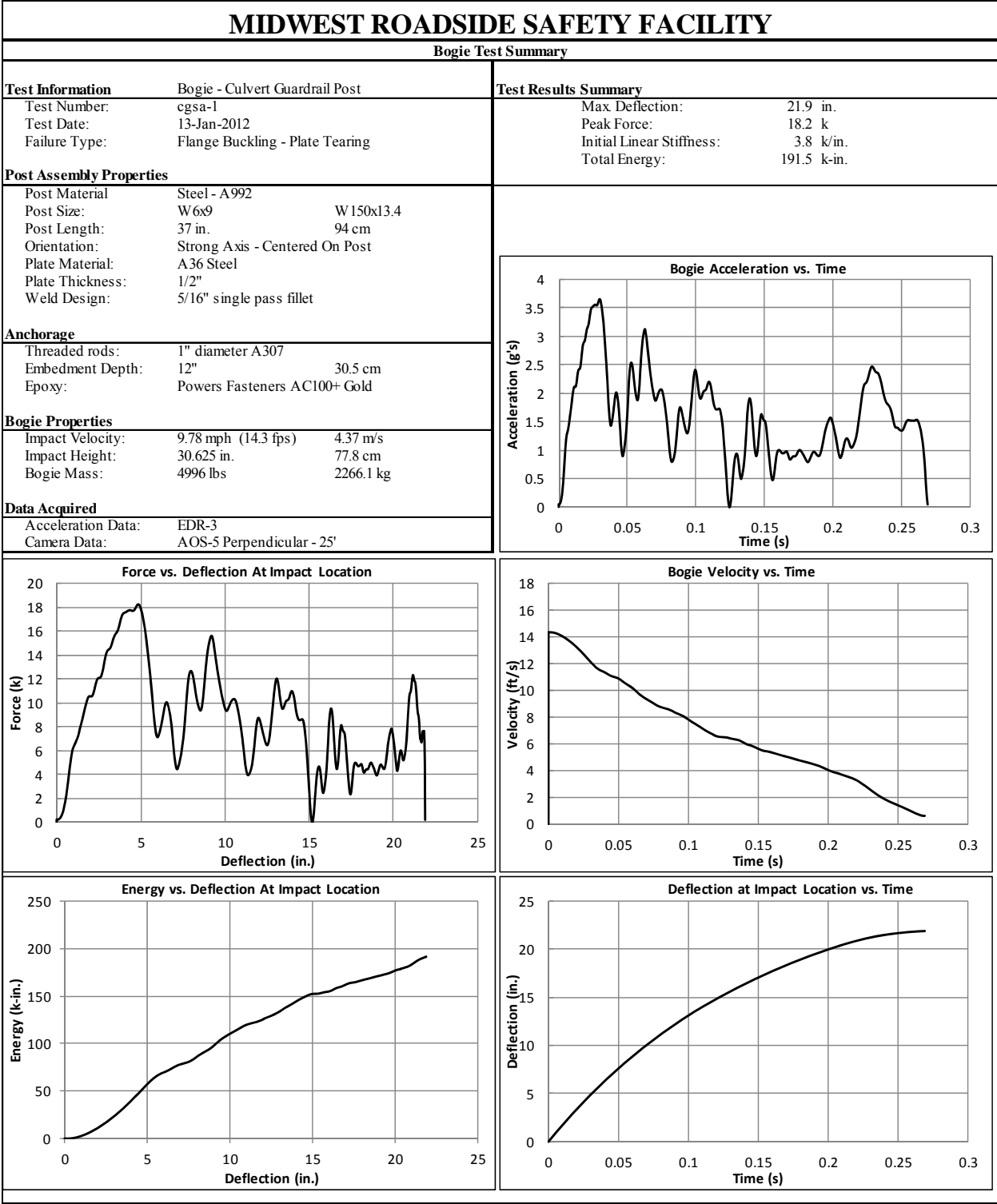


Figure B-2. Results of Test No. CGSA-1 (EDR-3)

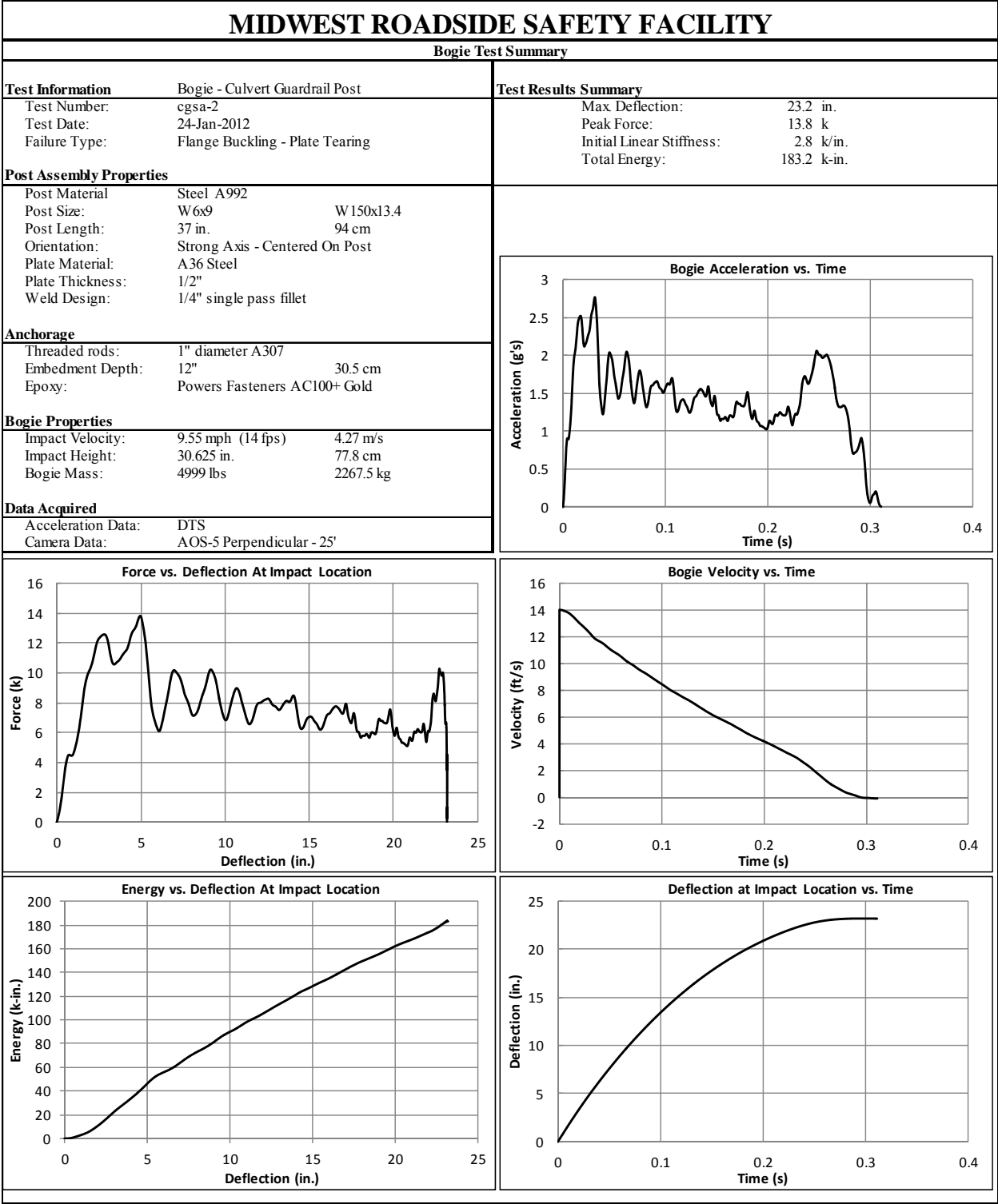


Figure B-3. Results of Test No. CGSA-2 (DTS)

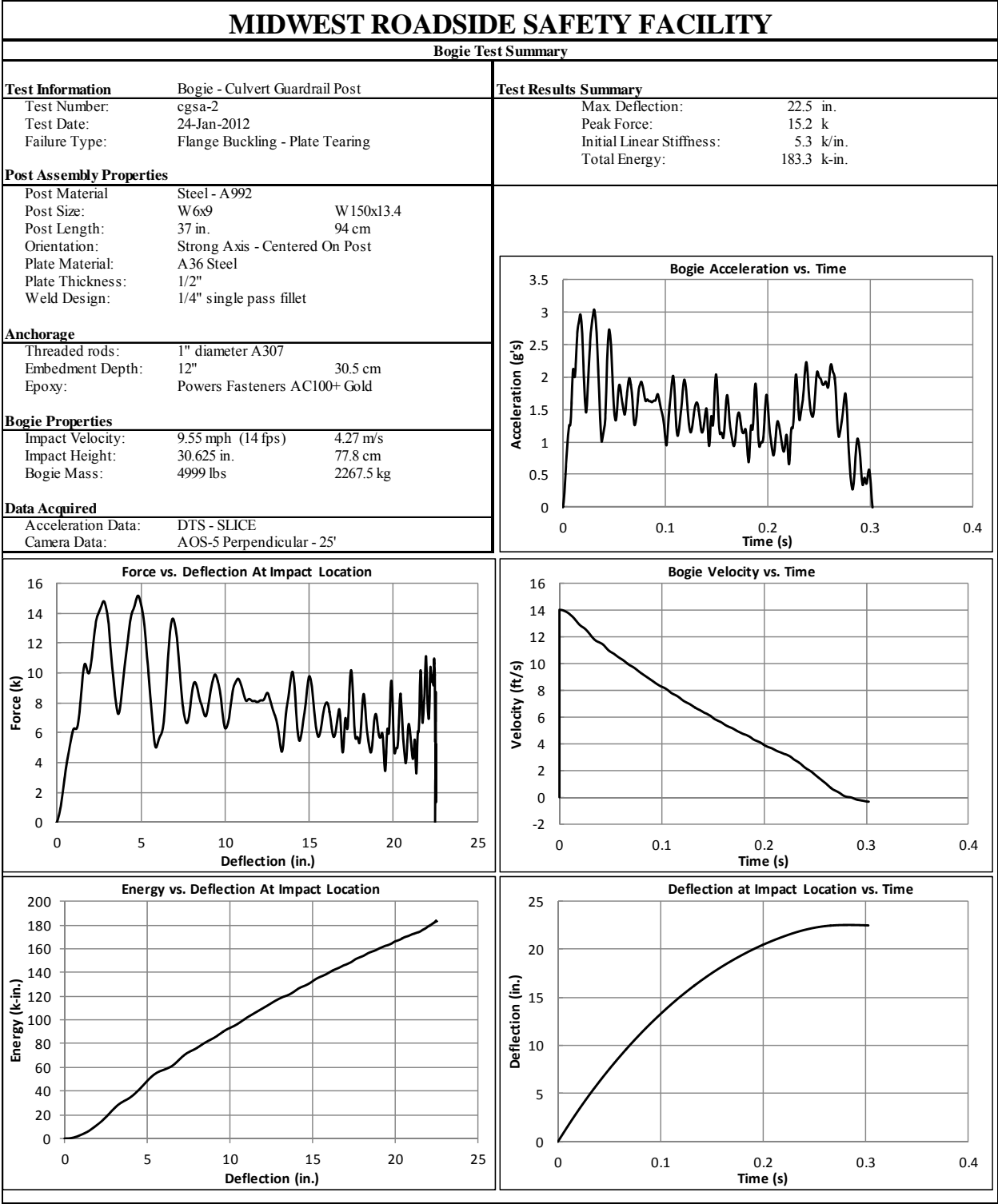


Figure B-4. Results of Test No. CGSA-2 (DTS-SLICE)

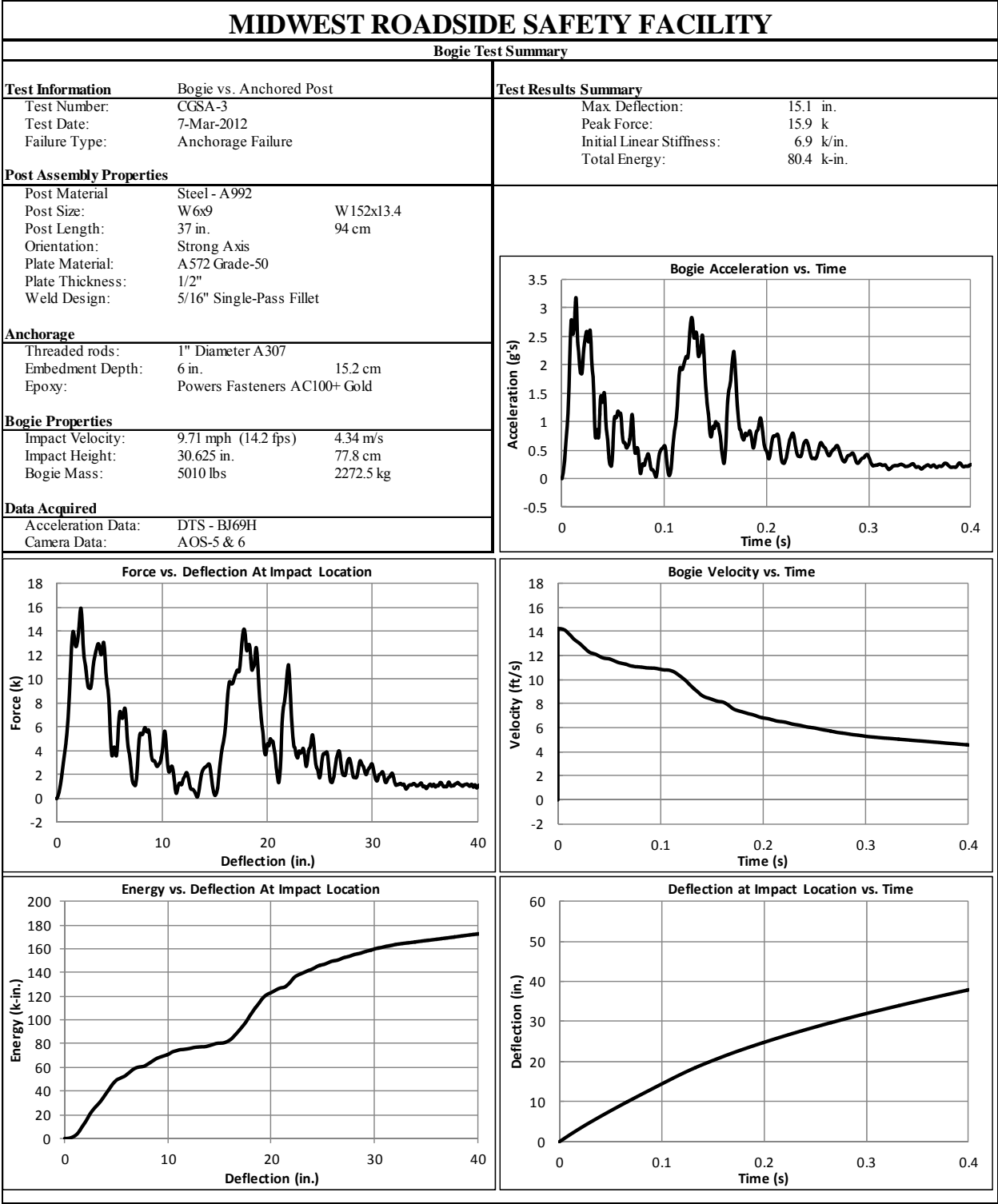


Figure B-5. Results of Test No. CGSA-3 (DTS)

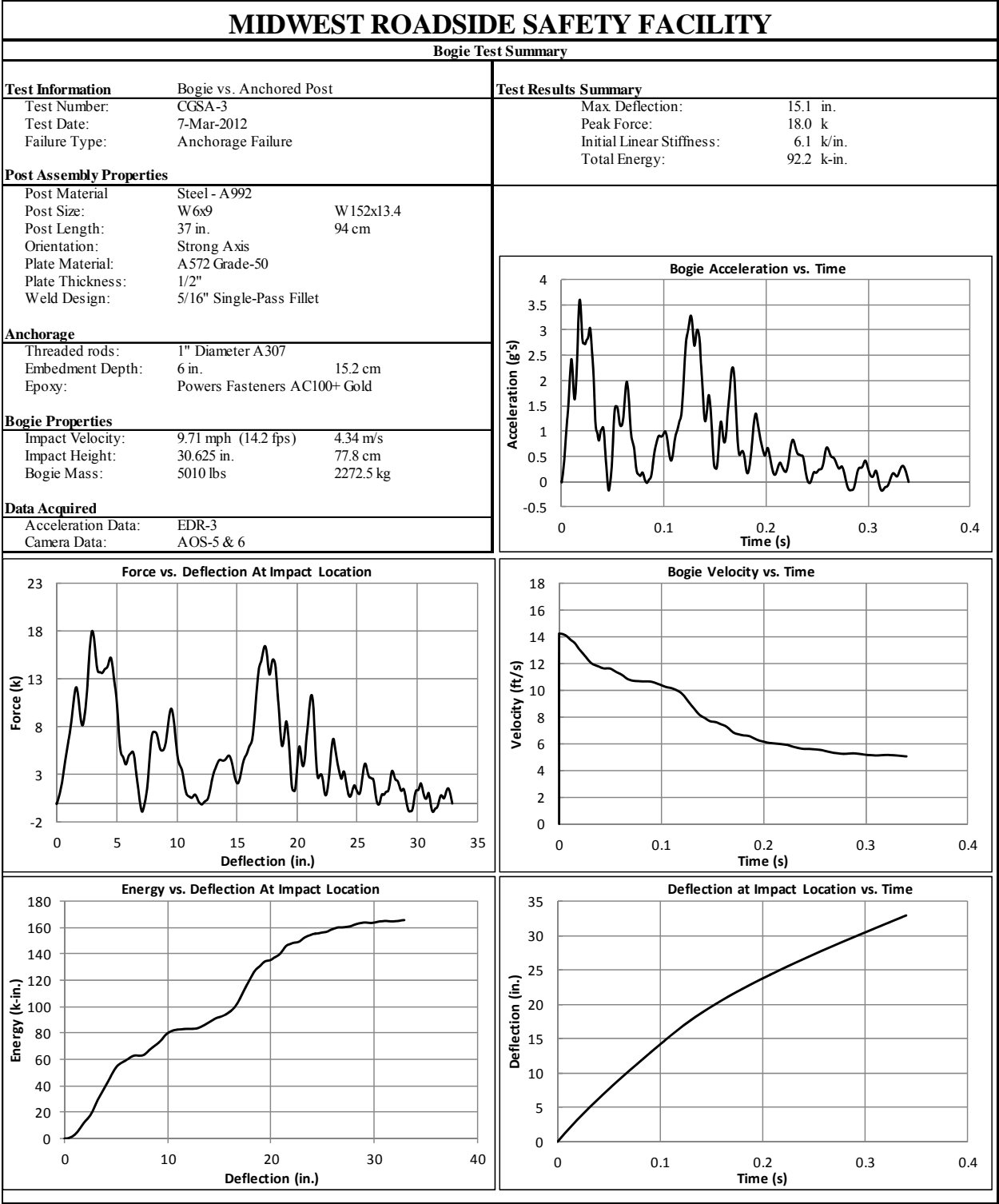


Figure B-6. Results of Test No. CGSA-3 (EDR-3)

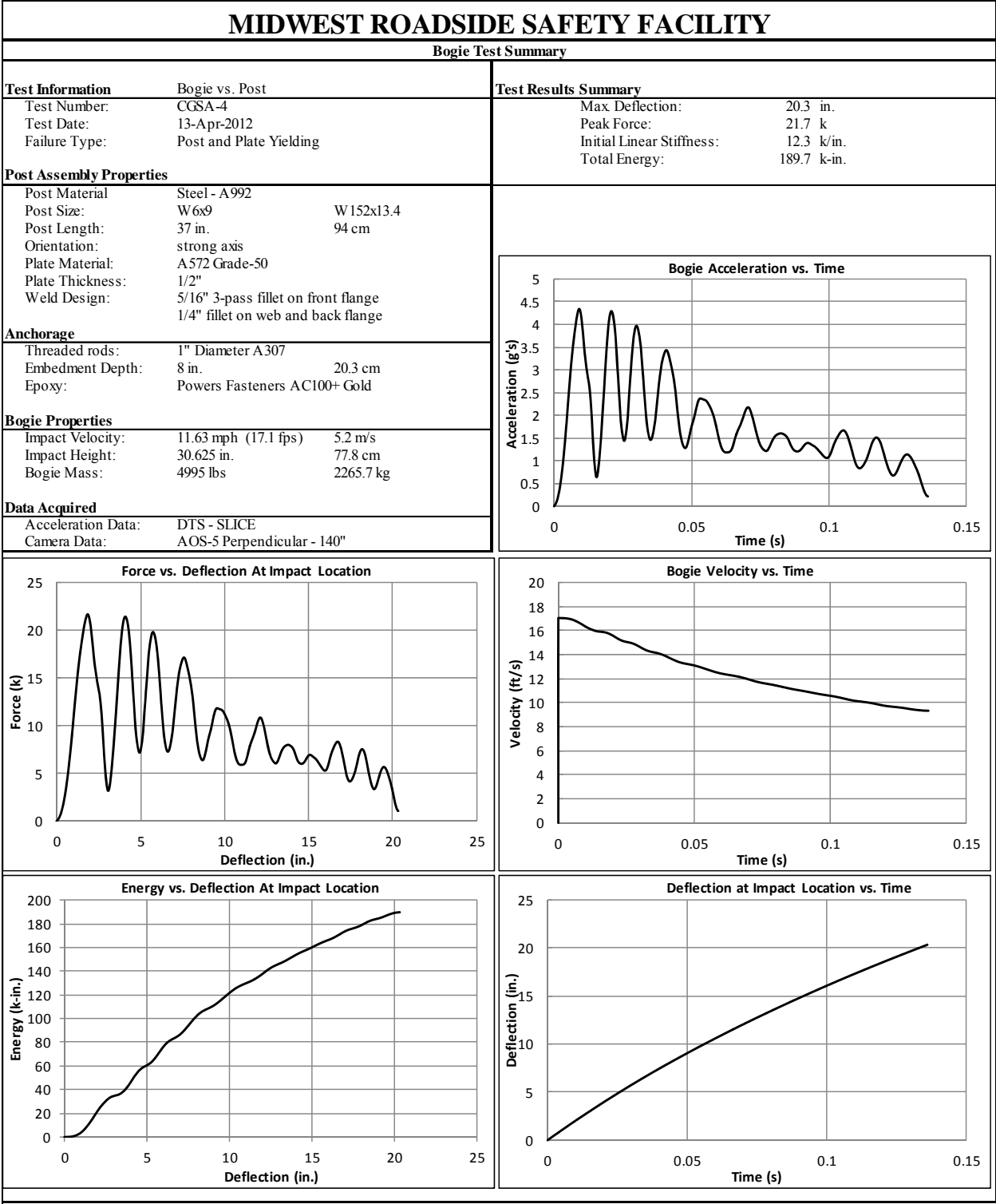


Figure B-7. Results of Test No. CGSA-4 (DTS-SLICE)

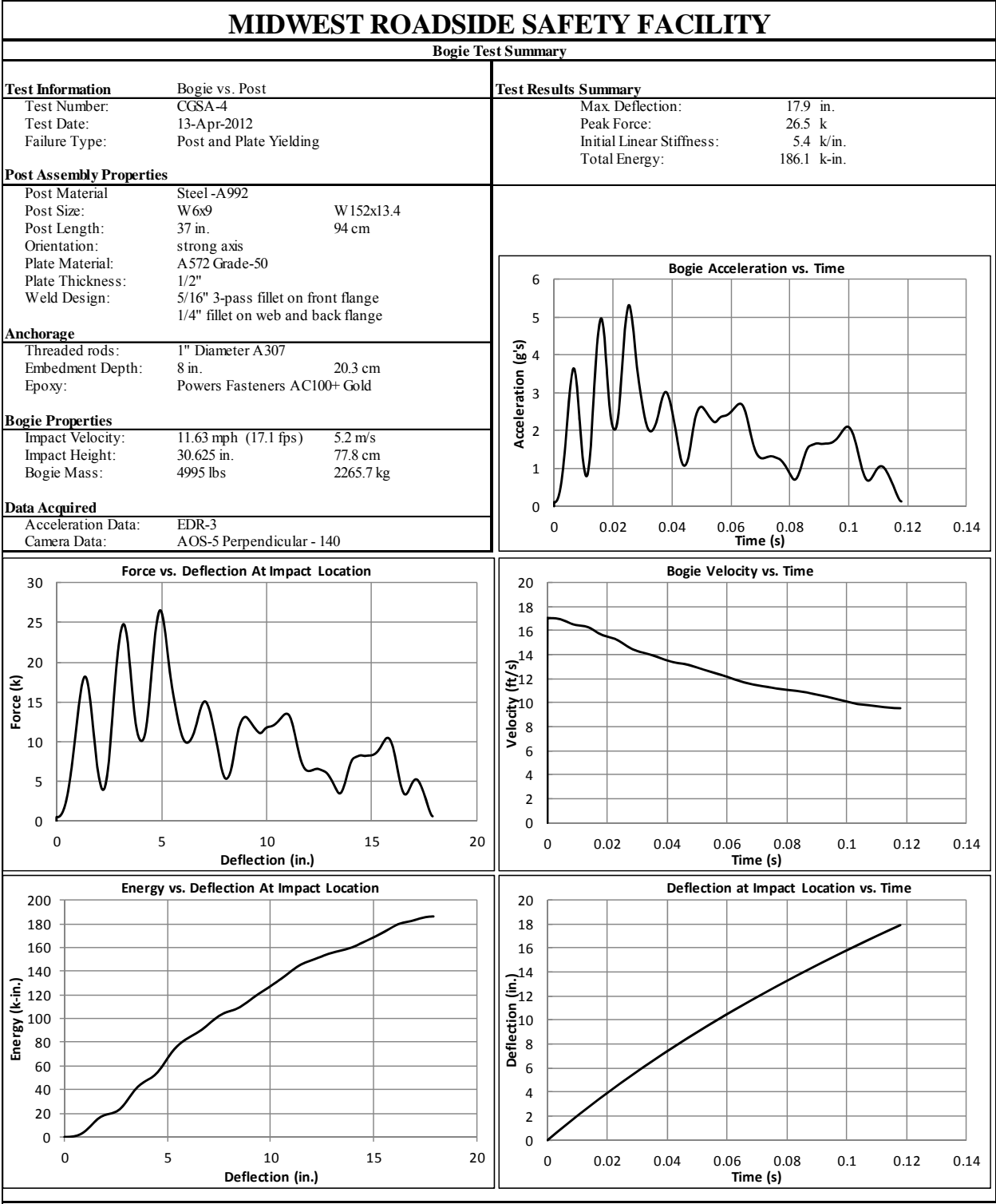


Figure B-8. Results of Test No. CGSA-4 (EDR-3)

END OF DOCUMENT