

4-22-2016

# Evolving Roles of Librarians: Juggling Print and Electronic Collections While Making Meaningful Connections

Jorge Leon Jr.

*Pittsburg State University, jleon@pittstate.edu*

Barbara Pope

*Pittsburg State University, bpope@pittstate.edu*

Follow this and additional works at: <http://digitalcommons.unl.edu/neplibconf>



Part of the [Higher Education and Teaching Commons](#), [Library and Information Science Commons](#), and the [Other Education Commons](#)

---

Leon, Jorge Jr. and Pope, Barbara, "Evolving Roles of Librarians: Juggling Print and Electronic Collections While Making Meaningful Connections" (2016). *Nebraska Library Association Conferences*. 4.

<http://digitalcommons.unl.edu/neplibconf/4>

This Presentation is brought to you for free and open access by the Nebraska Library Association at DigitalCommons@University of Nebraska - Lincoln. It has been accepted for inclusion in Nebraska Library Association Conferences by an authorized administrator of DigitalCommons@University of Nebraska - Lincoln.

# **EVOLVING ROLES OF LIBRARIANS:**

## **Juggling Print and Electronic Collections While Making Meaningful Connections**

**By Jorge Leon and Barbara M. Pope,  
Leonard H. Axe Library  
Pittsburg State University  
CULS Conference 2016, Manhattan KS**

# TRADITIONAL ROLES OF LIBRARIANS

- ▶ **Information Literacy / Instruction**
- ▶ **Collection Development**
- ▶ **Creating Access to Materials in Print and Electronic Formats**
- ▶ **Research Aids and Providing Reference Assistance**
- ▶ **Archival and Preservation Tasks**



Leonard H. Axe Library years ago...with orange walls

# **NEW AND EVOLVING LIBRARY ROLES IN THE 21<sup>ST</sup> CENTURY**

- ▶ **Information and Metadata Literacy**
  - ▶ **Open Access and Open Education Resources Literacy**
  - ▶ **Outreach Librarian and Library Commons Coordinator**
  - ▶ **Assessment and User-Study Coordinators**
  - ▶ **Technology and Digital Resource Librarianship**
- 

# CHALLENGES DURING THE 21<sup>ST</sup> CENTURY

- ▶ Desire to add new services and resources
- ▶ Lack of space
- ▶ Flat or declining budgets
- ▶ Too many roles and responsibilities
- ▶ Disconnect between users and print / electronic resources
- ▶ Changes in checkout pattern



# A LITTLE ABOUT PITT STATE

## Brief University Data

- Undergraduate and Graduate Programs
- Many Online Only Classes – 140+
- Number of Majors – 150+
- Student to Faculty Ratio – 19:1
- Number of Students – 7,400
- FTE – 6,771





## A Snap-Shot of our students



Studying during  
late night  
extended hours

## Recurring student art display



Study group  
during Finals  
Fall 2015



# CHALLENGES AT LEONARD H. AXE LIBRARY

- ▶ **Collection Development Policies and Procedures Were Out of Date**
  - ▶ **Multi-year Renovation and Remodel Plan**
  - ▶ **Reorganization of Positions**
    - ▶ **New Dean of Library Services**
    - ▶ **Learning Outreach Librarian**
    - ▶ **Digital Initiatives Librarian**
- 



# MAIN GOALS WE SET OURSELVES

**Develop new and innovative ways to make meaningful connections with users**

**Capitalize on users' expertise to create content and help us connect back to collections**

Decorative white lines consisting of several parallel diagonal strokes in the bottom right corner of the slide.

# BRIDGING OUTREACH AND COLLECTIONS

- ▶ Give users more *Ownership* over the space
- ▶ Create partnerships where users feel empowered to *Create Content* in the library
- ▶ Promote user events & programs that encourage *using library resources*

# GIVING USERS OWNERSHIP OF SPACE

- ▶ **Murals & Partnership With Faculty**
  - ▶ **Student Displays of Art Objects, Photographs**
  - ▶ **Library Renovation Involvement & User Studies**
  - ▶ **Mediated Reservation of Group Work Spaces**
  - ▶ **Sororities and Fraternities - “Letters In The Library”**
- 
- A decorative graphic consisting of several parallel white lines of varying lengths, slanted diagonally from the bottom right towards the top right, located in the lower right quadrant of the slide.





**GIVING USERS OWNERSHIP  
OF SPACE**





**GIVING USERS OWNERSHIP  
OF SPACE**

# PARTNERSHIPS WHERE USERS CREATE CONTENT IN THE LIBRARY

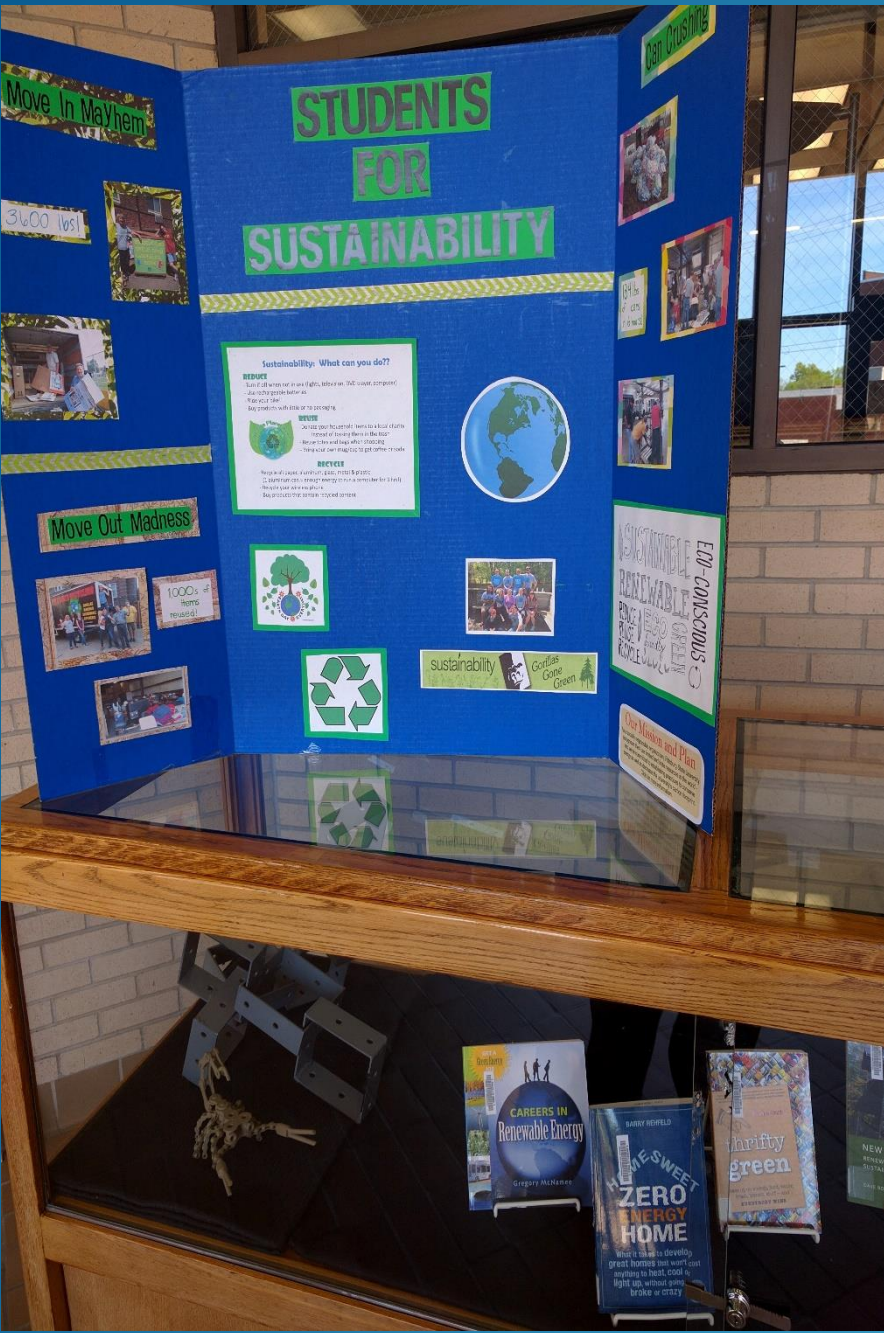
Reasons for student groups to use library space:

- ▶ Discuss social issues and concerns
- ▶ Promote their projects
- ▶ Recruit for their organizations

Examples:

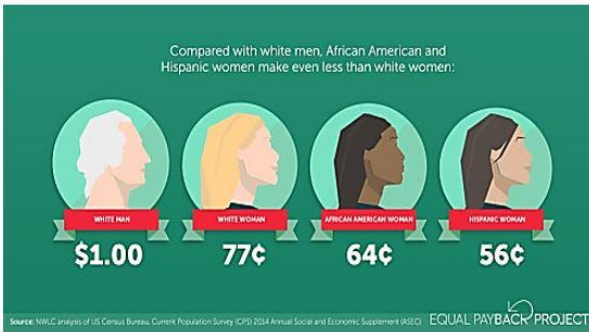
- ▶ Students 4 Sustainability
- ▶ Food drives & canned art
- ▶ Equal Pay 2016 Event
- ▶ Banned & Challenged books conversations





# USERS CREATING CONTENT IN THE LIBRARY

## EQUAL PAY DAY 2016



FEATURING INSIGHTS FROM LOCAL ENTREPRENEURS & HIRING MANAGERS

Sponsored by the Student Alliance for Gender Equity, the Office of Student Diversity and Axe Library.





# USERS CREATING CONTENT IN THE LIBRARY



## BANNED & CHALLENGED BOOKS

Join the discussion on historically controversial books! All are welcome to share an excerpt from a favorite banned or challenged book!

TUESDAY SEPT 22ND 1-2PM: Diversity & Multiculturalism

WEDNESDAY SEPT 23RD 4-5PM: Open-subject


THURSDAY SEPT 24TH 2-3PM: Young Adult & Graphic Novels

All events held in Axe Library Room 115  
Light refreshments provided.





# PROMOTE USER EVENTS / PROGRAMS THAT ENCOURAGE USE OF RESOURCES

- ▶ **Faculty Liaisons**
  - ▶ **Course LibGuides**
  - ▶ **Partnerships With Faculty & Academic Departments**
    - **Banned Books**
    - **Mural Project**
    - ▶ **Video Project**
    - ▶ **Luau**
  - ▶ **Table Tents**
  - ▶ **Extended Hours During Finals and Midterms**
- 

# PROMOTE USER EVENTS / PROGRAMS THAT ENCOURAGE USE OF RESOURCES

- ▶ **Library Liaisons**
- ▶ **Subject LibGuides**
- ▶ **Course LibGuides**
- ▶ **Library Instruction**

Pittsburg State University Library Services / LibGuides / NURS 850 Curriculum Development (Hite) / Home

## NURS 850 Curriculum Development (Hite): Home

---

**Module 2**

- [Nursing faculty preparedness for clinical teaching.](#)  
Suplee, P. D., Gardner, M., & Jerome-D'Emilia, B. (2014). Nursing faculty preparedness for clinical teaching. *The Journal of Nursing Education*, 53(3), S38.
- [Nursing faculty: A vulnerable population.](#)  
DalPezzo, N. K., & Jett, K. T. (2010). Nursing faculty: A vulnerable population. *The Journal of Nursing Education*, 49(3), 132-137.
- [What's the ROI for resolving the nursing faculty shortage?](#)  
Kowalski, K., & Kelley, B. M. (2013). What's the ROI for resolving the nursing faculty shortage? *Nursing Economics*, 31(2), 70-75.
- [Creating a healthy work environment for nursing faculty.](#)  
Kuehn, M. B. (2010). Creating a healthy work environment for nursing faculty. *Creative Nursing*, 16(4), 193-197.

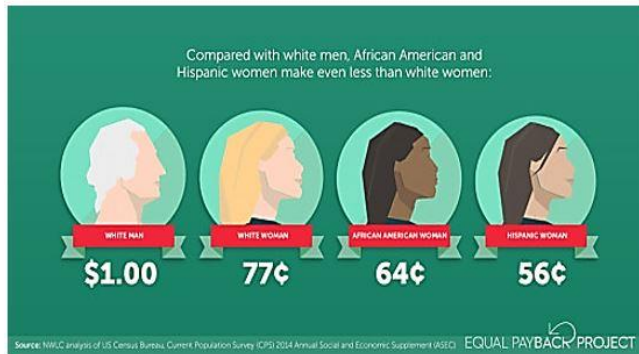
---

**Module 3**

- [Fostering Significant Learning in Graduate Nursing Education](#)  
Fostering Significant Learning in Graduate Nursing Education. by Geraldine F Marrocco. *Journal of Nursing Education*, 03/2014, Volume 53, Issue 3.

# PROMOTE USER EVENTS / PROGRAMS THAT ENCOURAGE USE OF RESOURCES

## EQUAL PAY DAY 2016



FEATURING INSIGHTS FROM LOCAL ENTREPRENEURS  
& HIRING MANAGERS

Sponsored by the Student Alliance for Gender Equity, the Office of Student Diversity and Axe Library.



GAB student partners during extended hours programming

# LESSONS WE LEARNED

- ▶ **Change the way you engage users. Different strategies for different groups.**
- ▶ **Don't Be Afraid to Experiment**
- ▶ **It will be a constant challenge to continuously create new relationships - But the product of user created content is worth the effort**
- ▶ **Departments on campus will find out and approach you about new opportunities**



## FURTHER READINGS

**Snavely, Loanne. Student Engagement and the Academic Library. Santa Barbara, Calif.: ABC-CLIO, 2012.**

**Cawthorne, Jon E. “Integrating outreach and building partnerships: Expanding our role in the learning community.” College & Research Libraries News. Nov. 2003. 64 (10): 666-681.**

▶ **Barbara M. Pope, MALS**  
**Periodicals/Reference Librarian**  
**620-235-4884**  
**bpope@pittstate.edu**

▶ **Jorge Leon**  
**Learning Outreach Librarian**  
**620-235-4892**  
**jleon@pittstate.edu**

## **CONTACT INFORMATION**

**PDF of handout available at this link**  
**<http://libguides.pittstate.edu/pope/home>**