

INGENIERÍA MECÁNICA

Comparación de dos métodos de diseño de implantes basados en tecnologías de ingeniería inversa, diseño e ingeniería, BIOCAD/CAD/CAE

MECHANICAL ENGINEERING

Comparison between two design methods implants, based on reverse engineering, design and engineering technologies, BIOCAD/CAD/CAE

Clara I. López*§, Julio C. Pinillos, Juan C. Moreno****

* *Grupo INNOTECH* ** *Grupo INTERFAZ, Universidad Industrial de Santander, Escuela de Diseño Industrial, Bucaramanga, Colombia*
§ *clopez.di@gmail.com, disjuliopin@hotmail.com, fedor@uis.edu.co*

(Recibido: 19 de abril de 2012 - Aceptado: 9 de octubre de 2013)

Resumen

El principal propósito del presente artículo de investigación, fue comparar dos métodos usados para el diseño y evaluación biomecánica de implantes dentales. El primer método se desarrolló basado en la integración de una técnica imagenológica usada en diagnóstico de imágenes tomográficas, para la reconstrucción de modelos 3D virtuales óseos con herramientas software de ingeniería inversa, articulada al diseño aplicado en ingeniería e ingeniería mecánica aplicada. En el segundo método, la probeta de mandíbula fue modelada en un software CAD (Computer Aided Design) que fue utilizado para el diseño del implante; posteriormente fue realizado la simulación biomecánica estática en un entorno CAE (Computer Aided Engineering), aplicando cargas incrementales de torque de inserción en la interfase hueso implante. Los análisis por simulación en ambos métodos fueron realizados basados en los mismos criterios de evaluación. Se corroboró por simulación los valores de torque de inserción apropiados para mantener una adecuada relación en la interfase hueso implante. Por otra parte los resultados obtenidos por la aplicación de cada método de diseño fueron analizados y comparados para conocer el efecto de la integración de las técnicas imagenológicas apropiadas desde el software Bio CAD y articulado con las tecnologías software CAD CAE.

Palabras clave: *BIO-CAD, CAE, diseño de implante, técnica imagenológica.*

Abstract

The main objective of this research work was to make a comparison between two methods used for design and biomechanical assessment of dental implants.. The first method is based on integration of an imaging technique used in diagnosis of tomographic images applied to 3D bone model reconstruction with reverse engineering software tools implemented on engineering applications. In the second method a specimen of jaw modeled in CAD (Computer Aided Design) software used to implant design was implemented, then a static simulation biomechanics was performed in a CAE (Computer Aided Engineering) environment, applying elementary insertion torque loads at the bone-implant interface. Simulations Analysis were performed for both methods, using the same evaluation criteria. Appropriate insertion torque values were confirmed with simulations as appropriate to maintain a proper relationship at the bone-implant interface. The results obtained using each method were analyzed and compared to determine the effect on appropriate integration of BioCAD imaging techniques and articulation with Technologies CAD and CAE.

Keywords: *BIO-CAD, CAE, implant design method, imaging technique, reverse engineering,*

1. Introduction

The development of new implants used in reconstructive and regenerative surgical procedures, has been the result of methods application based design software specialized type tools, such as CAD (computer aided design), CAE (computer aided engineering), used to improve the products design process (Singare *et al.*, 2004). However computer aided design has been a design conventional method, limited when applied to objects with complex morphology as bone tissues. But the design concept is changing with conceptualization and implementation of reverse engineering to new products development Kucklick (2006).

Reverse Engineering is based on analysis and evaluation from existing models as reference for new solutions reconstruction, Lopes da Silva *et al.* (2009). With this approach, software tools as Bio-CAD (Computer Aided Design Biological) have been developed to obtain 3D virtual bone models, based on recognition tomographic images of living tissues, previously configured in an image format DICOM (Digital Imagen and Communication in Medicine) Sun *et al.* (2005).

As previously mentioned, DICOM provided radiographic density values of the hard and soft tissues, differentiated by a gray scale and classified correlated with density scales HU Hounsfield, (Gómez *et al.*, 2008; Taylor *et al.*, 2002). The data obtained enable the physico-mechanical and nondestructive characterization of living tissues allowing to find density and elasticity modulus of tissue Meyer *et al.*, 2003). The reconstruction of 3D bone models in BioCAD software is based on DICOM images of interest tissue, thus, new methods have been developed for Biomedical product development, Xu & Wang (2002).

Singare *et al.* (2004) and Rama Murthy & Mani (2012) studies, describes that initially the reconstructed bone model is obtained, and then proceeds to perform the implants design by means of complementary CAD software to Bio-CAD tool, or, it can be modeled directly in Bio-CAD

software, supported by previous virtual 3D bone models (Harrysson *et al.*, 2007; Mazzoli *et al.*, 2009; Rotaru *et al.*, 2012). Finally, implant design must be validated, so, bone and implant models existing in BioCAD software, will be exported to CAE environment (Computer Aided Engineering), to know the biomechanical behavior of the bone-implant interface, through structural analysis (Correa *et al.*, 2012). These analysis are based on use simulation tools and evaluated by Finite Elements Method (FEM) Harrysson *et al.* (2007).

In this research paper, design and evaluation of a dental implant, developed by two different methods is exposed. First method, called Method 1, is based on reverse engineering integration in the design and evaluation biomechanical process; in the second method, called method 2, the bone and implant architecture is modeled in CAD software and subsequently evaluated in a CAE software. The results of application each method were compared, and concluded the effect of the software technologies used in the design process to new biomedical products development. Next, the developed stages, results, discussion of results and conclusions are described.

2. Method

The process begins with the selection of bone specimens, from two cadaver human jaws, corresponding to adult male body, these specimens were used to obtain tomographic images. The bone specimens were supplied by amphitheater from Universidad Industrial de Santander. Based on bone specimens the experimental development was started.

Three stages were raised in the first method: the first stage based on reverse engineering to obtain virtual models to improve model accuracy and ensure the reliability of the simulation analysis; in the second stage, applied engineering design, a implant was designed and modeled on CAD software; In the final stage, its was applied mechanical engineering, biomechanical analysis activities were performed. Method 2, started from

the design engineering stage, obtaining the virtual bone and implant model using CAD software, finally the mechanical engineering stage applied to biomechanical analysis as the first method. Following the stages of each method is described.

2.1 Reverse engineering

This stage was implemented in method 1, three main activities were performed for reconstruction of models of the mandible; import of DICOM images, obtaining and editing the 3D model. Figure 1 shows a conceptual map of reverse engineering stage (figure 1).

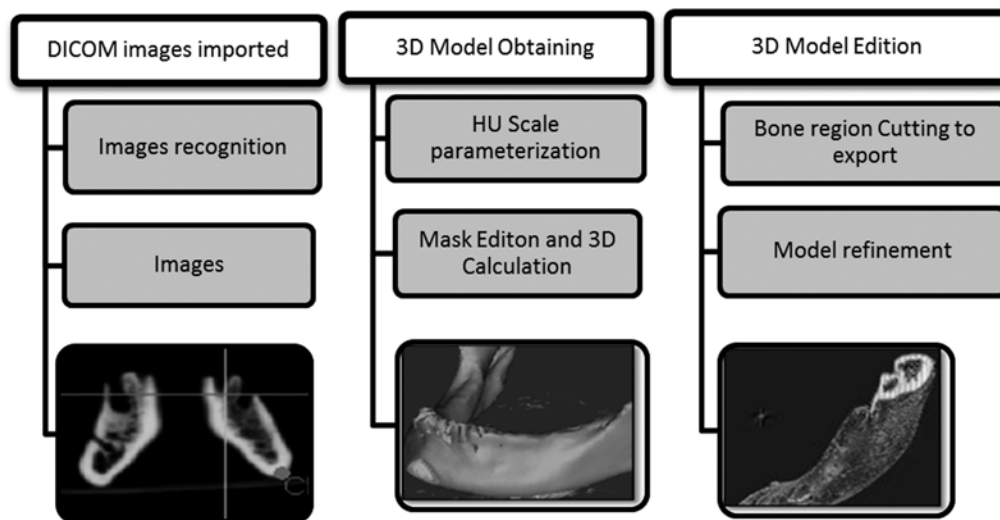


Figure 1. Sequence for 3D Jaw reconstruction

In the first activity, tomographic images of two cadaver jaws are imported to BioCAD Software. The import procedure was performed at the X-Ray lab from University Hospital of Santander, following the CARA 3D protocol, established by laboratory to these procedures. A Tomographer Multislice Helical MSCT Toshiba Aquilion LB was used to obtain the images. The images cuts were every 1 millimeter, obtaining 585 as total images per specimen. Kobatake (2007) BioCAD software was used to tomographic images recognition and subsequently underwent a radiographic characterization through conversion of Hounsfield Gray Scales HU, to correlate with bone mineral density values.

Finally, mask selected tissues was edited to perform the 3D calculation; followed by refinement 3D CAD model of the reconstructed jaw bone. Thus, the model for subsequent editing operations related biomechanical study in applied mechanical engineering stage was prepared.

2.2 Applied design in engineering

This stadium was developed with the same criteria in both methods, for modeling the implant design. In CAD software, a short implant was patterned with 12 mm of long, and 5 mm of head diameter. The implant design was defined with

a head with flat circular section, pierced with an internal hexagon for the abutment adjustment. Implant neck was modeled with a taper of 3° , in the neck surface four slots of round cross section were distributed to increase the contact area with the cortical bone tissue, used to improve mechanical retention and reducing shear stresses in interface, Misch (2009). The body implant was defined with a threaded body with a pitch of 1.75 mm.

The standard thread type ASTM F543 HB (2009) was selected to get tooth profile higher than the cortical screw type, providing greater contact area with the bone, American Society for Testing

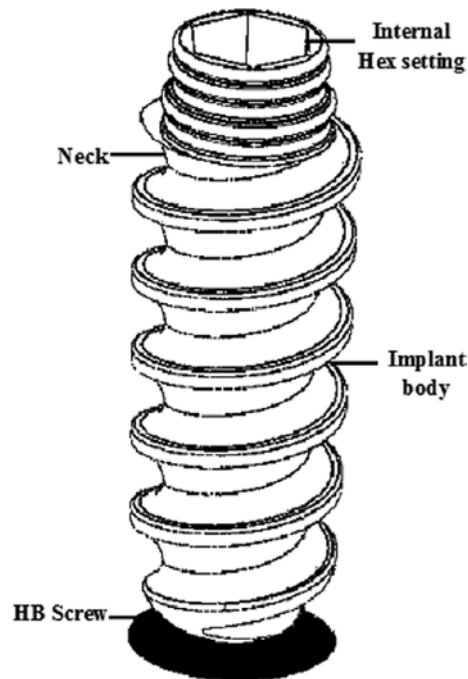


Figure 2. Implant Geometry Modeling

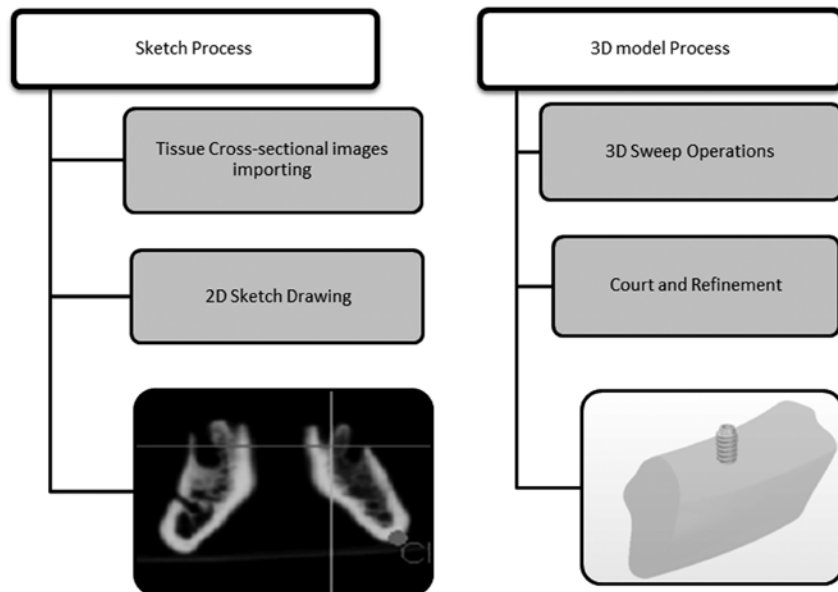


Figure 3 Obtaining bone-model for CAD tools

and Materials (2009). In figure 2 shows the dental implant model design.

Moreover, in method 2, the modeling procedure on CAD software of jaw bone tissue was performed from sketched operations on images of jaw cross sections distributed in serial form to

generate volumes swept. In Figure 3, shows the region image simulates jaw bone tissue obtained with the modeling tools (figure 3).

2.3 Applied mechanical engineering

In this stage, a biomechanical study based on

static analysis of load torque insertion produced by implant, inserted in type II bone tissue from molar region was proposed, Misch (2009). Torque values used in study were based on test results of manual insertion torque standard ASTM F543, 2009, (Gomes & Shimano, 2008). From the experimental evaluation, the torque values used to simulation study, was from 0.25, 0.35, 0.4, 0.6 to 0.8 N/m, López (2011).

The virtual models volumes were discretized and analyzed by simulation using the finite elements method (FEM). In static analysis, the stress and strain produced in bone-implant interface by insertion torque effect were assessed using the Von Mises failure criteria.

After obtained 3D virtual bone models and implant modeling, virtual implant insertion was performed on the bone model. In method 1, this operation was performed on Bio-CAD software, while method 2, the insertion of implant in bone modeling was performed on CAD software.

According to nature simulation analysis, the information about physical and mechanical properties, such as density, Young modulus and yield stress, bone tissue and implant material was collected. In method 1, the bone tissue density was obtained from HU Scale Radiographic density values characterized by a non-destructive method (López, 2012); based on this data was determined by literature, the physical-mechanical bone properties, such as bone density type D2 and magnitude of 2.4 g/cm³, elasticity modulus to 0.57 GPa and yield strength 13.76 MPa (Misch, 2009).

Moreover, the alloy Ti6Al4V was chosen as implant materia, this alloy is commonly used in manufacture of orthopedic implants, by to be neutral and corrosion resistance of titanium, making biocompatible (Gómez *et al.*, 2007; Hanada, 2005); this alloy was compared with 316L steel, was obtained a lower density with a value of 4.43 g/cm³, also has a Alpha + Beta microstructure which confers a lower elasticity modulus of 113.8 GPa combined with yield stress

of 880 MPa greater than steel. (Wang, 1996; Ninomi, 1998).

3. Results and discussion

In method 1, the model was discretized in BioCAD software, the mesh model was performed using 72 tetrahedral Solid Elements and Shell Mesh 200 linear triangular node, based on this elements, a two-piece model with 48583 and 262312 elements nodes was created, this model was exported using FE Modeler module, where boundary and studio conditions were set, turning virtual model to compatible format with ANSYS

Table 1. Stress values in implant and bone-interface according to Von Mises failure criteria

<i>EQUIVALENT VON MISES STRESS OBTAINED IN BONE-INTERFACE TISSUE METHOD 1</i>		
<i>LOAD: INSERCIÓN TORQUE N/M</i>	<i>IMPLANT INTERFACE DENSITY: 4,43 g/cm³ E: 113,8 GPa Sy 880 MPa</i>	<i>BONE INTERFACE DENSITY: 2 g/cm³ E: 0,57 GPa Sy 13,76 MPa</i>
0,25	74,91	7,288
0,35	104,89	11,654
0,4	118,73	12,98
0,6	179,8	19,979
0,8	254,72	28,303

Structural® environment CAE. In method 2, CAD modeling was led to ANSYS® Structural, in CAE environment, conditions analysis and biomechanical modeling discretization was established. As a result the element type used on mesh was SOLID 187 and a mesh with 54727 nodes and 44205 elements was obtained.

According to method 1 simulation, the Table 1 results, shown that highest magnitude efforts are distributed bone interface, mainly at base of tooth profile implant. In this region, a reading of stress values at interface was performed, these values were lower than Ti6Al4V yield stress. However, at bone interface, after insertion torque 0.4 N/m, a plastic or permanent deformation are presented

in the bone, which was indicating that torque values equal or greater than 0.4 N/m, bone tissue strength would be exceeded, causing fracture or permanent damage.



Figure 4. Ti6Al4V implant made with CNC Brand RS 20R and detail fitting between implant head and chuck key

Furthermore, in method 2 a simulation study was developed biomechanical under the same conditions used in Method 1. As a result, it was

found that applying a torque insertion of 0.25 and 0.35 N/m, the torque magnitude was directly proportional to stresses values of in bone-implant interface, obtaining a maximum von mises equivalent stress value of 273 MPa to torque of 0, 35 N/m in implant, and a value of 17.72 MPa in bone interface.

Based on this information, the implant geometry was modified, rounded profile of thread, to reduce stress concentrators Chun-li *et al.* (2005) López *et al.* (2010); then, a prototype was manufactured using an CNC industrial seven-axis START SR-20R. 10 implant model samples were manufactured in Ti6Al4V. In Figure 4, shows the longitudinal section of manufactured implant inserted into the bone specimen previously used to obtain tomographic images, and insertion torque testing.

4. Conclusions

The work developed in this paper has shown how to integrate the diagnostic technique based on images with product design process through reverse engineering BioCAD software based technologies, contributed to obtain the bone specimen actual topology, generating a reference accuracy models, strengthening CAD method design and engineering analysis CAE software tools for new products development.

According to method 1 stages, the bone specimen virtual 3D model was developed with accuracy higher than method 2, since in BioCAD software 585 images were used for automatic reconstruction, as the model created in a CAD environment, the specimen jaw section was obtained only approximating sketched silhouettes referenced by two cross-sectional bone-tissue images, and subsequent volume generation applying a scanning function 3D.

Using the Finite Element Method (FEM) simulations were performed to get efforts and Von Mises approximate deformations produced in bone-implant interface, based on biomechanical

static loads as insertion torque on an bone matrix implant, which do not possible to quantify experimentally, this approach also reduces the development time of new products for biomedical industry.

Analyzing the simulation results of simulations in 3D modeling obtained by both methods, it was observed in method 2 equivalent stress of 273 MPa in implant and 17.72 MPa in bone interface, in both cases exceeded its resistance yield, so it was considered invalid results because according with the simulation data, a torque of 0.35 N/m, permanent deformation will exist in implant geometry and permanent damage to bone tissue with possible fracture, this is not consistent with clinical practice since in implant procedures applied with safety factor torque of 0.35 N/m to set implant without damaging bone tissue.

Moreover, it was noted that simulations with method 1 model, the equivalent stress values implant were below fluency limit for all torque values applied, compared to bone interface, where efforts measured were below fluency limit to torque of 4 N/m torque. The results show that torque values recommended for proper insertion to biomechanical behavior in bone-interface, corresponding to torque values from 0.25 to 0.4 N/m. The above statement is consistent with torque value used in surgical practice 0.35 N/m, since torque values higher can lead to appearance of microcracks and pathological behavior in bone which implant may lead to loosening after. Thus, it is shown in Method 1 with a virtual model reconstructed from real tissue structure was support to obtain closer results to real conditions sustained from accuracy of living tissues virtual models.

5. Acknowledgment

The authors express gratitude to Vicerrectoría de Investigación y Extensión (VIE) from Universidad Industrial de Santander, for financial support under the research project VIE 5558 entitled “Design of an orthopedic implant to extent based on imaging

techniques and biomechanical assessment bone-implant interface by Finite Element Method (FEM), to Quirúrgicos Especializados company”, developed for research groups consolidation in open mode with co-funding.

6. References

- ASTM International (American Society for Testing and Materials), (2009). Standard Specification and Test Methods for Metallic Medical Bone Screws, F 543-07 vol. i, no. C., 1–20. Pennsylvania United States.
- Cehreli, M. Akkocaoglu M. & Akca, K., (2006). Numerical simulation of in vivo intraosseous torsional failure of a hollow-screw oral implant. *Bio-med Central.Head & Face Medicine* 36(2), 1-7.
- Correa, S., Ivancik, J., Isaza, J. F., & Naranjo, M., (2012). Evaluation of the structural behavior of three and four implant-supported fixed prosthetic restorations by finite element analysis. *Journal of prosthodontic research* 56(2),110–9.
- Gomes, S. & Shimano, A.,(2008). Behavior of cortical screws submitted to manual. *Acta Ortop Bras*, 16(2), 81–84.
- Gomez N., Müller C., Casanova E., & San Antonio T., (2008). Estudio del comportamiento mecánico del tejido óseo. *Mecánica Computacional XXVII*, 10–13.
- Gómez, J. E., Forero, L. E, Escobar, P. & Valdivieso, W., (2007). Estudio de citotoxicidad y adhesión de células humanas de osteosarcoma de Ti6Al4V superficialmente modificado. *Scientia Et Technica XIII*(036), 85–89.
- Harrysson, O.L., Hosni, Y. & Nayfeh, J.F., (2007). Custom-designed orthopedic implants evaluated using finite element analysis of patient-specific computed tomography data: femoral-component case study. *BMC Musculoskeletal disorders* 8 (iv), 91.

- Kobatake, H., (2007). Future CAD in multi-dimensional medical images project on multi-organ, multi-disease CAD system. Computerized medical imaging and graphics : *the official journal of the Computerized Medical Imaging Society* 31(4-5), 258–66.
- Kucklick, T., (2006). Reverse engineering in medical device design. In *The Medical Device R&D Handbook*. p. 161–192.
- CTI (Centro de Tecnología da Informação Renato Archer). (2010). A Gestão integrada de programas em um laboratório de pesquisa e os seus resultados práticos para a área da saúde. <http://hdl.handle.net/10691/185>.
- Lopez, C.I., Archila, J.F. & Cantero, K.M., (2012). Aplicación de un método no destructivo para la obtención propiedades físicas de tejido óseo basado técnica imanenológica y herramientas software cad. *Prospectiva* 10(2), 22–30.
- López, E., Ramirez, F., Romero, C., De la Garza, J. & Castillo, J., (2010). Relación de la geometría de elementos mecánicos con el cambio de formas en la naturaleza como criterios de diseño. In G. S. Cancino R., ed. *Memorias del XVI congreso internacional anual de la SOMIM*. Monterrey, México, p. 1–12.
- López, C. (2011). *Estudio de esfuerzos y deformaciones en la interfase hueso implante, evaluando los materiales para implantes Tiadyne™ 3510 y Ti6Al4V®, basado en un modelo óseo mandibular reconstruido por técnica imagenológica, sometido a cargas biomecánicas estáticas y analizado por el método de elementos finitos*. Tesis de Maestría. Escuela de Ing. Metalúrgica. Universidad Industrial de Santander, Bucaramanga Colombia.
- Mazzoli, A., Germani, M. & Raffaeli, R., (2009). Direct fabrication through electron beam melting technology of custom cranial implants designed in a PHANTOM-based haptic environment. *Materials & Design* 30(8), 3186–3192.
- Niinomi, M., (1998). Mechanical properties of biomedical titanium alloys. *Materials Science and Engineering: A* 243(1-2), 231–236..
- Rama Murthy, S. & Mani, M., (2012). Design for sustainability: The role of CAD. *Renewable and Sustainable Energy Reviews* 16(6), 4247–4256.
- Rotaru, H., Stan, H. Florian, I. S., Schumacher, R., Park, Y-T., Kim, S-G., Chezan, H., Balc, N., & Baciut, M., (2012). Cranioplasty with custom-made implants: analyzing the cases of 10 patients. *Journal of oral and maxillofacial surgery : official journal of the American Association of Oral and Maxillofacial Surgeons* 70(2), 169–76.
- Singare, S., Dichen, L., Bingheng, L., Yanpu, L., Zhenyu, G., & Yaxiong, L., (2004). Design and fabrication of custom mandible titanium tray based on rapid prototyping. *Medical engineering & physics* 26(8), 671–6.
- Sun, W., Starly, B., Nam, J., & Darling, A., (2005). Bio-CAD modeling and its applications in computer-aided tissue engineering. *Computer-Aided Design* 37(11), 1097–1114.
- Xu, X.Y. & Wang, Y.Y., (2002). Multi-model technology and its application in the integration of CAD / CAM / CAE. *Journal of Materials Processing Technology* 129(1), 563–567.