

# Impact of Incomplete Percutaneous Revascularization in Patients With Multivessel Coronary Artery Disease: A Systematic Review and Meta-Analysis

Vinayak Nagaraja, MBBS, MS; Sze-Yuan Ooi, MBBS (Hons), FRACP, MD (Leeds), FCSANZ; James Nolan, MD; Adrian Large, MD; Mark De Belder, MD; Peter Ludman, MD; Rodrigo Bagur, MD, PhD; Nick Curzen, BM, PhD; Takashi Matsukage, MD, PhD; Fuminobu Yoshimachi, MD, PhD; Chun Shing Kwok, MBBS, MSc, BSc; Colin Berry, MBChB, PhD; Mamas A. Mamas, BM BCh, MA, DPhil

**Background**—Up to half of patients undergoing percutaneous coronary intervention have multivessel coronary artery disease (MVD) with conflicting data regarding optimal revascularization strategy in such patients. This paper assesses the evidence for complete revascularization (CR) versus incomplete revascularization in patients undergoing percutaneous coronary intervention, and its prognostic impact using meta-analysis.

**Methods and Results**—A search of PubMed, EMBASE, MEDLINE, Current Contents Connect, Google Scholar, Cochrane library, Science Direct, and Web of Science was conducted to identify the association of CR in patients with multivessel coronary artery disease undergoing percutaneous coronary intervention with major adverse cardiac events and mortality. Random-effects meta-analysis was used to estimate the odds of adverse outcomes. Meta-regression analysis was conducted to assess the relationship with continuous variables and outcomes. Thirty-eight publications that included 156 240 patients were identified. Odds of death (OR 0.69, 95% CI 0.61–0.78), repeat revascularization (OR 0.60, 95% CI 0.45–0.80), myocardial infarction (OR 0.64, 95% CI 0.50–0.81), and major adverse cardiac events (OR 0.63, 95% CI 0.50–0.79) were significantly lower in the patients who underwent CR. These outcomes were unchanged on subgroup analysis regardless of the definition of CR. Similar findings were recorded when CR was studied in the chronic total occlusion (CTO) subgroup (OR 0.65, 95% CI 0.53–0.80). A meta-regression analysis revealed a negative relationship between the OR for mortality and the percentage of CR.

**Conclusion**—CR is associated with reduced risk of mortality and major adverse cardiac events, irrespective of whether an anatomical or a score-based definition of incomplete revascularization is used, and this magnitude of risk relates to degree of CR. These results have important implications for the interventional management of patients with multivessel coronary artery disease. (*J Am Heart Assoc.* 2016;5:e004598 doi: 10.1161/JAHA.116.004598)

**Key Words:** complete revascularization • incomplete revascularization • major adverse cardiovascular events • mortality • percutaneous coronary intervention

Percutaneous coronary intervention (PCI) is the most common form of coronary revascularization in patients with stable coronary artery disease and acute coronary syndromes (ACS).<sup>1</sup> Multivessel coronary artery disease is common and affects more than half of patients who have an

ACS.<sup>2,3</sup> In these patients there is a lack of evidence on whether revascularization that is restricted to the culprit artery is sufficient or whether multivessel PCI would lead to an improved prognosis. Angiographically incomplete revascularization (IR) has been considered to be a poor prognostic feature in multiple

*From the Department of Cardiology, Prince of Wales Hospital, Sydney, New South Wales, Australia (V.N., S.-Y.O.); Royal Stoke University Hospital, University Hospitals of North Midlands, Stoke-on-Trent, United Kingdom (J.N., A.L., C.S.K., M.A.M.); Keele Cardiovascular Research Group, Institute of Science and Technology in Medicine, University of Keele, Stoke-on-Trent, United Kingdom (J.N., C.S.K., M.A.M.); The James Cook University Hospital, Middlesbrough, United Kingdom (M.D.B.); Queen Elizabeth Hospital, Birmingham, United Kingdom (P.L.); Division of Cardiology, Department of Medicine and Department of Epidemiology & Biostatistics, London Health Sciences Centre, Western University, London, Ontario, Canada (R.B.); University Hospital Southampton & Faculty of Medicine, University of Southampton, United Kingdom (N.C.); Division of Cardiology, Tokai University School of Medicine, Isehara, Japan (T.M., F.Y.); Institute of Cardiovascular and Medical Sciences, University of Glasgow, United Kingdom (C.B.).*

**Correspondence to:** Mamas A. Mamas, BM BCh, MA, DPhil, Keele Cardiovascular Research Group, University of Keele, Stoke-on-Trent, United Kingdom. E-mail: mamasmamas1@yahoo.co.uk

Received September 20, 2016; accepted October 28, 2016.

© 2016 The Authors. Published on behalf of the American Heart Association, Inc., by Wiley Blackwell. This is an open access article under the terms of the Creative Commons Attribution-NonCommercial-NoDerivs License, which permits use and distribution in any medium, provided the original work is properly cited, the use is non-commercial and no modifications or adaptations are made.

observational studies and post hoc analyses of randomized controlled trials.<sup>4-8</sup> The only prospective randomized controlled trial (RCT) outside the context of ST-elevation myocardial infarction (STEMI) comparing the safety, efficacy, and costs of complete versus “culprit” vessel revascularization in multivessel coronary artery disease treated with PCI showed no difference in major adverse cardiovascular event (MACE) rates between the 2 strategies, with a lower cost associated with the culprit-only strategy in the shorter term, although costs equalized in the longer term.<sup>9</sup>

Recent data from randomized trials including the PRAMI,<sup>10</sup> CvLPRIT,<sup>11</sup> and DANAMI-3-PRIMULTI trials,<sup>12</sup> which recruited patients presenting with STEMI undergoing primary PCI, have shown that multivessel “complete” revascularization is associated with better outcomes than culprit-only revascularization. However, despite these data, important uncertainties still exist about the optimal strategy for such patients. Furthermore, in patients with stable coronary artery disease, international PCI guidelines do not provide guidance about the performance of complete revascularization (CR) versus IR, although functional assessment of lesions using noninvasive tests or fractional flow reserve (FFR) is recommended to avoid unnecessary treatment of nonsignificant stenosis<sup>13-15</sup> because this is associated with adverse outcomes.

In a previous meta-analysis by Garcia et al<sup>16</sup> including ~90 000 individuals with multivessel disease, incomplete revascularization in 25 938 CABG patients (29% from 16 studies) and 63 945 PCI patients (71% from 24 publications) was associated with increased risk of mortality, myocardial infarction, and repeat revascularization irrespective of the revascularization strategy employed. Since then many studies have been published including large registry data,<sup>13,17</sup> post hoc analyses of randomized trials,<sup>6,18,19</sup> and observational studies<sup>7,20-24</sup> to assess effectiveness of complete coronary revascularization.

Our objectives were to assess and update the current evidence for complete revascularization and its prognostic impact in PCI by performing a meta-analysis of 38 studies including over 150 000 patients (excluding the STEMI and surgical revascularization cohorts).

## Methods

### Eligibility Criteria

The Preferred Reporting Items for Systematic reviews and Meta-Analyses (PRISMA) guidelines were followed.<sup>25</sup> Studies were selected of patients who underwent PCI, reporting mortality or cardiovascular events among patients with and without complete revascularization with no restriction based on study design or the indication for PCI. Publications that did not report either mortality or MACE were excluded.

## Search Strategy

A search was done of PubMed, EMBASE, MEDLINE, Current Contents Connect, Google Scholar, Cochrane library, Science Direct, and Web of Science to October 2016. We used the following search terms: “Complete revascularization” OR “Incomplete revascularization” AND “Percutaneous coronary intervention” OR “PCI.” These keywords were searched as text words as well as exploded medical subject headings when feasible. The search strategy example for MEDLINE is as follows: 1 Complete revascularization.mp. (913), 2 Incomplete revascularization.mp. (358), 3 1 or 2 (1125), 4 exp \*Percutaneous Coronary Intervention/(31 192), 5 3 and 4 (292). We excluded the STEMI and surgical revascularization cohorts. The definitions of “complete revascularization” are given in Table 1. Studies in all languages were included. The bibliographies of the included studies and relevant review articles were checked for additional relevant articles.

## Study Selection and Data Extraction

Two reviewers (V.N. and M.M.) independently checked all titles and abstracts for studies potentially meeting the inclusion criteria. The full reports of these studies were retrieved, and data were independently extracted on study design, participant characteristics, complete revascularization definition, outcome events, and follow-up.

## Quality Assessment

The Newcastle-Ottawa Scale (NOS)<sup>26</sup> was used as an assessment tool for selection, comparability, and outcome assessment. Study quality was rated on a scale from 1 (very

**Table 1.** Definitions of Complete Revascularization

Anatomical or traditional	All diseased arterial systems with vessel size 1.5 (2.0-2.25 mm for PCI) with at least 1 significant stenosis >50% receive a stent
Functional	All ischemic myocardial territories are grafted (or stented); areas of old infarction with no viable myocardium are not required to be reperfused
Numerical	Number of distal anastomoses number of diseased coronary segments/systems
Score-based	Scoring of stenosis in different vessels. Different weight given to different vessels according to number of myocardial segments supplied. A residual score of 0 is usually considered equivalent to CR
Physiology-based	All coronary lesions with FFR less than or equal to 0.75 to 0.80 receive a stent

CR indicates complete revascularization; FFR, fractional flow reserve; PCI percutaneous coronary intervention.

poor) to 9 (high). Publication bias was assessed using an Egger regression model<sup>27</sup> and the fail-safe number method.<sup>28</sup>

## Data Analysis

The program Comprehensive Meta-analysis (version 2.0) was used to conduct DerSimonian and Laird random-effects meta-analysis.<sup>29</sup> Risk ratio (RR) and 95% confidence intervals (CI) were calculated. Adjusted or propensity-matched risk estimates were used when available. Meta-regression analysis was conducted to assess the relationship with continuous variables and outcomes. The Cochrane Q-statistic ( $I^2$ ) was used to assess the consistency among studies, with  $I^2 < 25%$  considered low,  $I^2 > 50%$  moderate, and  $I^2 > 75%$  high heterogeneity.<sup>30</sup>

## Results

### Study Population

A total of 425 publications were screened; then, 38 relevant studies\* including 156 240 patients met our selection criteria (Figure 1). We excluded previous meta-analysis<sup>16,54-66</sup> and trials comparing target lesion revascularization versus upfront revascularization STEMI.<sup>10-12,67-70</sup> The studies included were mostly observational and included large registries<sup>13,17,50,53</sup> or post hoc analyses of randomized trials such as the SYNTAX trial,<sup>6</sup> FAME trial,<sup>18</sup> ARTS trial,<sup>31</sup> ARTS-II Study,<sup>44</sup> MASS II trial,<sup>36</sup> BARI trial,<sup>33</sup> CABRI trial,<sup>34</sup> and the ACUTY trial.<sup>8</sup> Only 1 randomized single-center trial<sup>9</sup> has been published so far that compares the outcomes of complete and incomplete percutaneous revascularization.

The publication dates ranged from 1988 to 2016, and the follow-up period for patients ranged between 1 and 11 years. The numbers of patients in each study were variable and ranged between 192 and 23 342 individuals. Most of these participants were male, and the percentage of females ranged from 7% to 37%; the mean age reported in the studies varied from 52 to 68 years. The percentage of ACS ranged from 0% to 100%.

Most of the studies used an anatomic definition for complete revascularization. Only 1 study used a functional definition (coronary lesions with fractional flow reserve  $\leq 0.75$  to 0.80 received a stent),<sup>43</sup> and 7 others utilized a score-based assessment (SYNTAX score; a residual score of 0 is considered to be complete revascularization) for complete revascularization.<sup>5,6,17,19,21-23</sup> The percentage of complete revascularization ranged from 17% to 70% with a mean of 42.7%. The study characteristics have been tabulated in

\*References 4-9, 13, 17, 18, 20-24, 31-53, 71.

Table 2. The results of the studies that evaluated incomplete revascularization and adverse outcomes are shown in Table 3.

### Outcomes: Overall and Subgroup Analysis Based on CR Definition and Chronic Total Occlusion Revascularization

There was a significantly lower risk of death with complete revascularization (Figure 2, OR 0.69, 95% CI 0.61-0.78) among 36 studies<sup>†</sup> that reported this outcome. This lower risk of mortality was maintained after performing subgroup analysis based on the anatomic definition of complete revascularization<sup>‡</sup> (OR 0.69, 95% CI 0.61-0.79), although this did not reach statistical significance for score-based definitions<sup>6,8,18,19,24,39,44,46</sup> (OR 0.73, 95% CI 0.50-1.07). Similar findings were recorded in the complete chronic total occlusion (CTO)-revascularization cohort (5 studies,<sup>4,38,48,50,52</sup> OR 0.65, 95% CI 0.53-0.80) and in the non-CTO cohort (OR 0.71, 95% CI 0.61-0.82).<sup>§</sup>

The outcome of repeat revascularization was reported in 17 studies,<sup>||</sup> and there was statistically significantly lower rate in complete revascularization populations (Figure 3, OR 0.60, 95% CI 0.45-0.80). After subgroup analysis with respect to definition of complete revascularization, this benefit was maintained in studies that used anatomic<sup>¶</sup> (OR 0.58, 95% CI 0.41-0.82) and score-based definitions<sup>6,8,18,19</sup> (OR 0.64, 95% CI 0.54-0.76).

Myocardial infarction was reported in 17 studies,<sup>#</sup> and a statistically significantly lower rate was observed (Figure 4, OR 0.63, 95% CI 0.50-0.79). This finding was maintained with respect to anatomic\*\* (OR 0.60, 95% CI 0.45-0.81) and score-based definitions<sup>6,8,18,19</sup> (OR 0.64, 95% CI 0.51-0.79) of complete revascularization.

MACE was reported in 14 studies,<sup>††</sup> and a significantly lower rate was observed (Figure 5, OR 0.66, 95% CI 0.51-0.85). This finding was maintained with respect to anatomic<sup>7,9,13,17,20,35,47,56</sup> (OR 0.64, 95% CI 0.46-0.89) and score-based definitions<sup>6,8,18,19,39</sup> (OR 0.68, 95% CI 0.50-0.93) of complete revascularization.

Stent thrombosis was reported in only 3 studies,<sup>6,17,19,44</sup> and there was no impact of complete revascularization in its incidence (Figure 6, OR 0.81, 95% CI 0.49-1.33).

In a subgroup analysis of 2 studies<sup>8,71</sup> that reported on outcomes in patients who exclusively had acute coronary syndromes (ACS), no significant benefit was observed

<sup>†</sup>References 4-9, 13, 17, 18, 20-24, 31-50, 52, 53.

<sup>‡</sup>References 4, 7, 9, 13, 17, 20-24, 31-38, 40-43, 45, 47-50, 52, 53.

<sup>§</sup>References 5-9, 13, 17, 18, 20-24, 31-37, 39-47, 49, 53.

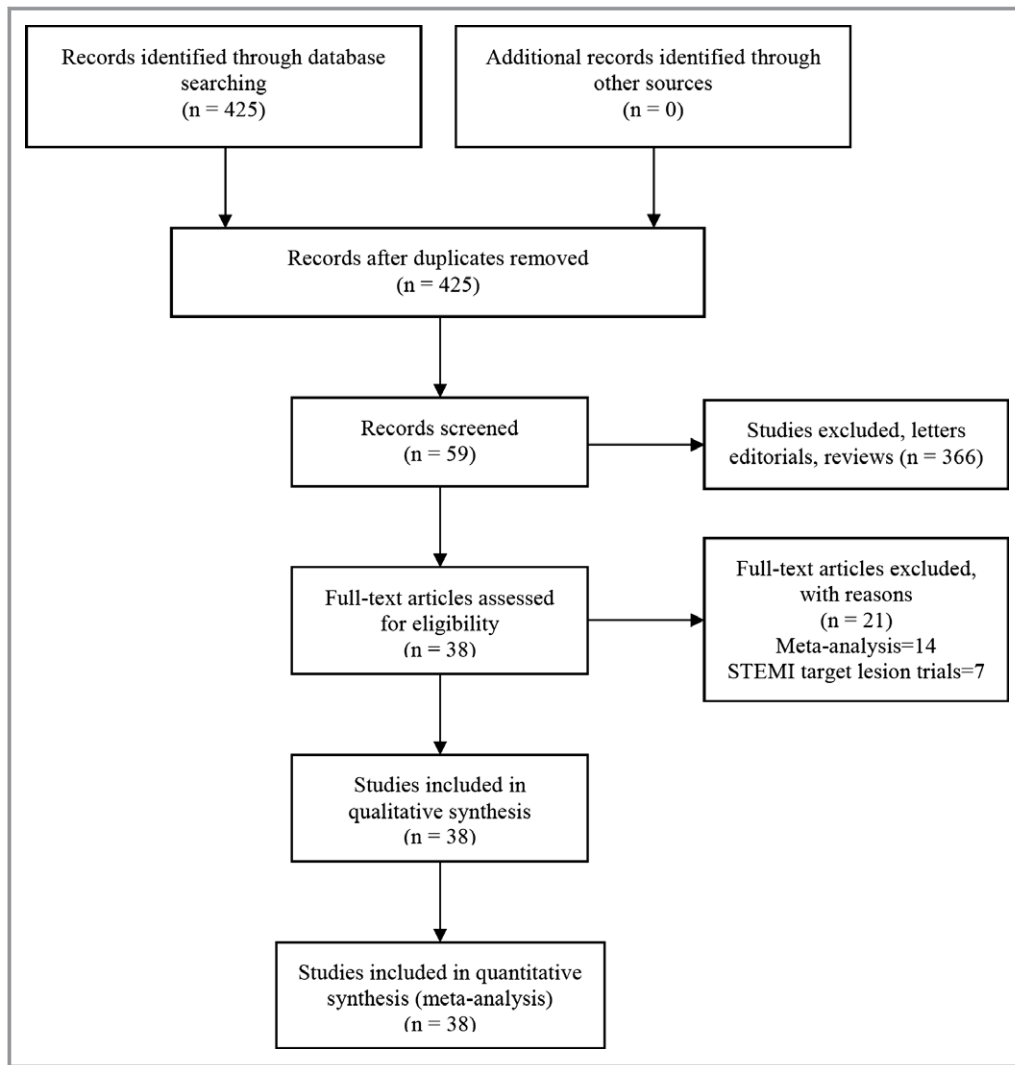
<sup>||</sup>References 6, 8, 9, 13, 17-20, 31, 33, 37, 41, 49, 53, 71.

<sup>¶</sup>References 9, 13, 17, 20, 31, 33, 37, 41, 49, 53, 71.

<sup>#</sup>References 6, 8, 9, 13, 17-20, 31, 33, 37, 41, 49, 53, 71.

\*\*References 9, 13, 17, 20, 31, 33, 37, 41, 49, 53, 71.

<sup>††</sup>References 6-9, 13, 17-20, 35, 39, 47, 53, 56.



**Figure 1.** Flow diagram of included studies. STEMI indicates ST-elevation myocardial infarction.

(OR 0.71, 95% CI 0.44-1.11) in mortality or MACE (OR 0.79, 95% CI 0.54-1.17).

### Regression Analysis Based on Proportion of CR

A regression analysis was conducted, and a negative relationship was observed between the mortality and the percentage of CR. From the regression model, there was very strong evidence that the OR of mortality was inversely related to CR with a  $P < 0.001$  ( $df = 34$ ). Log OR of mortality decreased by 1.25 (95% CI  $-1.64$  to  $-0.88$ ) for every 1% increase in CR. There was no relationship between the odds ratio of mortality and year of publication.

### Heterogeneity and Publication Bias

There was significant heterogeneity noted among the different studies that could be explained by diverse population groups.

The degree of heterogeneity reduced to a minimal amount once subgroup analysis was performed based on a score-based definition of complete revascularization, suggesting similar study designs and population cohorts. The results have been summarized in Table 4. There was no publication bias identified using the Egger regression model.

### Discussion

In our meta-analysis of 38 studies including over 156 240 patients undergoing PCI, we observed that fewer than half of all patients with multivessel coronary artery disease have CR. We observed that CR is associated with a lower rate of mortality, myocardial infarction, and MACE, irrespective of whether an anatomical or a score-based definition of IR was used, and that the magnitude of risk relates to degree of CR on meta-regression. Our analysis builds on the work done by Garcia et al<sup>16</sup> by placing a focus on PCI and including new studies.

**Table 2.** Publications Incorporated in the Systematic Review and Meta-Analysis

Name	Country	Year	Study Type	CR Definition	IR Definition	Number of Patients	ACS%	Follow Up Years	CR Prevalence	% Female	Mean Age, y	NOS
Appleby et al <sup>32</sup>	Canada	2010	Observational study	Anatomic	Greater than 70% stenosis in epicardial vessel, assessed angiographically at the end of the procedure	12 662	53	3.7	35	28	63	7
Bourassa et al <sup>33</sup>	USA and Canada	1999	Post hoc analysis of the BARI trial	Anatomic: Angiographically significant lesions were defined as $\geq 50\%$ stenosis in a vessel $\geq 1.5$ mm as measured by electronic callipers	NA	896	63	5	64	23	62	6
Breeman et al <sup>34</sup>	Netherlands	2001	Post hoc analysis of the CABRI trial	Anatomic: If all lesions were successfully dilated—ie, if there were no remaining lesions with diameter stenosis $< 50\%$ and incomplete otherwise	NA	267	25	1	38	19	61	6
Capodanno et al <sup>21</sup>	Italy	2013	Observational study	Score-based: The baseline SYNTAX score and residual SYNTAX score were derived from the summation of the individual scorings for each lesion (defined as $\geq 50\%$ stenosis in vessel $\geq 1.5$ mm) on angiograms	Residual SYNTAX score $> 1$	400	62	2	48.75	23	67	6
Chung et al <sup>35</sup>	Korea	2012	Observational study	Anatomic: Absence of diameter stenosis $\geq 50\%$ in major epicardial coronary arteries or their side branches with a diameter $\geq 2.5$ mm after successful PCI during index admission irrespective of the function or viability of relevant myocardium	NA	845	28	3.9	66.3	36.8	64	6
D'Oliveira Vieira et al <sup>36</sup>	Brazil	2012	Post hoc analysis of the MASS II trial	Anatomic	NA	192	0	10	36	33	59	8
Deligonul et al <sup>37</sup>	USA	1988	Observational study	Anatomic: Successful dilation of all major coronary or branch vessels and absence of residual stenosis $\geq 50\%$ in a major coronary vessel	NA	397	49	2	59	24	NA	6

Continued

**Table 2.** Continued

Name	Country	Year	Study Type	CR Definition	IR Definition	Number of Patients	ACS%	Follow Up Years	CR Prevalence	% Female	Mean Age, y	NOS
Gao et al <sup>7</sup>	China	2013	Observational study	Anatomic: Angiographic CR, which entailed successful angioplasty of all diseased lesions in the major epicardial coronary vessels and their first-degree side branches (diameter $\geq 2.5$ mm)	Patients not meeting the definition of CR were defined as having IR divided into 4 subgroups: (1) 1 IR vessel with no total occlusion; (2) 1 IR vessel with total occlusion; (3) $\geq 2$ IR vessels with no total occlusion; and (4) 2 IR vessels with total occlusion	7065	61.2	1.3	16.8	20.94	58	7
Généreux et al <sup>6</sup>	Multicenter	2015	Post hoc analysis of the SYNTAX trial	Score-based: The baseline SYNTAX score and residual SYNTAX score were derived from the summation of the individual scorings for each lesion (defined as $\geq 50\%$ stenosis in vessel $\geq 1.5$ mm) on angiograms	The SYNTAX Revascularization Index was calculated with the following formula: $(\Delta \text{SS}/\text{baseline SYNTAX score} \times 100)$ . Classified into SRI=100%, SRI 50% to <100%, and SRI <50%	903	28.5	5	43.5	23.7	65	8
Hambraeus et al <sup>13</sup>	Sweden	2016	Observational study	Anatomic	Defined as any nontreated significant (at least 60%) stenosis in a coronary artery supplying >10% of the myocardium	23 342	80	1	35	27.2	68.1	7
Hannan et al <sup>4</sup>	USA	2006	Observational study	Anatomic: Defined as attempting all lesions with $\geq 50\%$ stenosis in major epicardial coronary vessels (proximal, mid, and distal right coronary artery, left anterior descending, and left circumflex) either during the index hospitalization or any time within 30 days after discharge from the index hospitalization but before suffering a new myocardial infarction	Patients not meeting the definition of CR were defined to have IR	21 945	NA	3	31	31	NA	6

Continued

**Table 2.** Continued

Name	Country	Year	Study Type	CR Definition	IR Definition	Number of Patients	ACS%	Follow Up Years	CR Prevalence	% Female	Mean Age, y	NOS
Hannan et al <sup>38</sup>	USA	2009	Observational study	Anatomic: Defined as successfully attempting all diseased ( $\geq 70\%$ stenosis) lesions in major epicardial coronary vessels (proximal, mid, and distal segments; major left anterior descending diagonals; and circumflex marginal branches) with PCI either during the index hospitalization or at any time within 30 days after discharge from the index hospitalization for PCI but before suffering a new MI. Success was defined as a reduction in stenosis of at least 20% and a residual stenosis of less than 50%	Patients not meeting the definition of CR were defined to have IR	11 294	37	1.5	31	33	NA	6
Ijsselmuiden et al <sup>9</sup>	Netherlands	2004	RCT	Anatomic: Randomly assigned to undergo PCI of either the coronary artery thought to be responsible for ischemia (culprit vessel) or of all $\geq 50\%$ stenosis (CR)		219	37	5	50	26	62	9
Kobayashi et al <sup>18</sup>	Multicenter	2016	Post hoc analysis of FAME trial	Score-based: The baseline SYNTAX score and residual SYNTAX score were derived from the summation of the individual scorings for each lesion (defined as $\geq 50\%$ stenosis in vessel $\geq 1.5$ mm) on angiograms	Residual SYNTAX score of 0, $>0$ to 4, $>4$ to 8, and $>8$ , and with SYNTAX revascularization index of 100%, 50% to $<100\%$ , and 0% to $<50\%$	427	31.9	2	14.5	25.5	64.7	8
Kim et al <sup>39</sup>	Korea	2011	Observational study	Anatomic: Angiographic CR-1, according to the SYNTAX classification, was defined as angioplasty or grafting in all diseased coronary segments ( $\geq 1.5$ mm), consisting of the right coronary artery (segments 1, 2, and 3) and its main branches, including the posterior descending artery (segment 4 or 15) and the posterolateral branch (segment 16); the left anterior descending artery (segments 5, 6, 7, and 8) and its major diagonal branches (segment 9 or 10); and the left circumflex artery (segments 11 and 13) and its major obtuse marginal branches (segment 12 or 14). Angiographic CR-2 was defined as revascularization in all diseased segments $\geq 2.5$ mm in diameter	Patients not meeting these criteria were considered IR patients	1400	42	5	41	29	61	6

Continued

Table 2. Continued

Name	Country	Year	Study Type	CR Definition	IR Definition	Number of Patients	ACS%	Follow Up Years	CR Prevalence	% Female	Mean Age, y	NOS
Kip et al <sup>40</sup>	USA	1999	Post hoc analysis of the BARI trial	Anatomic: Angiographically significant lesions were defined as $\geq 50\%$ stenoses in a vessel $\geq 1.5$ mm, as measured by electronic calipers. A reduction in stenosis of $\geq 20\%$ with residual stenosis of $< 50\%$ and TIMI grade 3 flow defined successful lesion dilation		2047	NA	5	59	NA	61	6
Kloeter et al <sup>41</sup>	Switzerland	2001	Observational study	Anatomic: No remaining main coronary artery stenosis of $> 50\%$		250	NA	2.5	60	18	59	6
Malin et al <sup>22</sup>	United Kingdom	2013	Observational study	Score-based: SYNTAX score and residual SYNTAX score were derived from the summation of the individual scorings for each lesion (defined as $\geq 50\%$ stenosis in vessel $\geq 1.5$ mm) on angiograms	Residual SYNTAX score of $> 0$	353	53	3.4	48.7	NA	68	7
Malin et al <sup>23</sup>	United Kingdom	2013	Observational study	Score-based: SYNTAX score and residual SYNTAX score were derived from the summation of the individual scorings for each lesion (defined as $\geq 50\%$ stenosis in vessel $\geq 1.5$ mm) on angiograms	Residual SYNTAX score of $> 0$	240	38	2.6	41	26	66.9	7
Mariani et al <sup>71</sup>	Italy	2001	Observational study	Anatomic: Defined as successful management of all significant stenoses in major epicardial vessels, whereas IR was defined as the residual presence of $> 50\%$ stenosis in a major segment after the procedure		208	100	1	24	17	63	6
Nikolsky et al <sup>42</sup>	Israel	2004	Observational study	Anatomic	NA	658	22	3	27	27	61	6
Norwa-Otto et al <sup>43</sup>	Poland	2010	Observational study	Functional: CR was defined as successful PCI of all coronary artery lesions with significant narrowing not fulfilling the above criteria	Functionally driven IR was defined as dilation of all segments with $> 70\%$ stenosis, with the exception of arteries supplying an area of previous transmural MI or a small amount of myocardium	908	33	11	31	18	52	6

Continued



**Table 2.** Continued

Name	Country	Year	Study Type	CR Definition	IR Definition	Number of Patients	ACS%	Follow Up Years	CR Prevalence	% Female	Mean Age, y	NOS
Park et al <sup>17</sup>	Korea	2014	Observational study	Score-based: The baseline SYNTAX score and residual SYNTAX score were derived from the summation of the individual scorings for each lesion (defined as $\geq 50\%$ stenosis in vessel $\geq 1.5$ mm) on angiograms	Residual SYNTAX score of 0, $>0$ to $<7$ , and $>7$	5088	64.5	1	42.7	32	62	7
Rosner et al <sup>8</sup>	USA	2012	Post-hoc analysis of ACUITY trial	Anatomic	Was variably defined as any lesion with a final DS ranging from $\geq 30\%$ to $\geq 70\%$ (in 10% increments) with a reference vessel diameter (RVD) $\geq 2.0$ mm by QCA was left untreated after PCI in any epicardial coronary artery	2954	100	1	63	31	60	8
Samo et al <sup>44</sup>	The Netherlands	2010	Post-hoc analysis of the ARTS-II Study)	Anatomic: Patients were considered to have CR if all lesions with $>50\%$ diameter stenosis had been successfully treated	Those patients in whom attempt was made to treat 1 significant lesion or whose treatment resulted in a final diameter stenosis $>50\%$ were considered to have IR	567	45	5	61.2	23	62.5	6
Sohn et al <sup>20</sup>	Korea	2014	Observational study	Anatomic: CR was defined as the absence of $\geq 70\%$ diameter stenosis in major epicardial coronary arteries or their branches with a diameter $\geq 2.0$ mm after successful PCI		263	29	3.3	57	25.8	67	6
Song et al <sup>45</sup>	Korea	2012	Observational study	Anatomic: CR strategy was defined as attempting all lesions with $>50\%$ stenosis in major epicardial coronary vessels and their major branches during the index hospitalization		873	48	1.5	48.9	30	64	6
Srinivas et al <sup>46</sup>	USA	2007	Observational study	Anatomic: CR required that at least 1 lesion had to be treated in each of the major territories with diameter stenosis $>50\%$		1406	36.5	1	22	33	62	6

Continued

**Table 2.** Continued

Name	Country	Year	Study Type	CR Definition	IR Definition	Number of Patients	ACS%	Follow Up Years	CR Prevalence	% Female	Mean Age, y	NOS
Tamburino et al <sup>47</sup>	Italy	2008	Observational study	Anatomic: Revascularization was defined as complete, when all lesions with >50% diameter stenosis located in segment of at least 2.25 mm diameter, by quantitative coronary analysis, were successfully treated either during the index hospitalization or staged electively within 3 months after the initial procedure		508	50	3	42	21	62	7
Valenti et al <sup>48</sup>	Italy	2008	Observational study	Anatomic: CR was defined as a restoration of TIMI grade 3 flow with residual stenosis <30% on visual assessment in the 3 coronary arteries and their major branches (branch diameter ≥2 mm)		486	37.5	2	62	17	68	6
Van den Brand et al <sup>31</sup>	Multicenter	2002	Post-hoc analysis of the ARTS Trial	Anatomic: if all lesions of ≥50% diameter stenosis had been successfully treated	If no attempt was made to treat 1 or more significant lesions, or if treatment resulted in a final diameter stenosis ≥50%, these patients were considered to be incompletely revascularized	576	38	1	70	21	61.5	8
Wu et al <sup>6</sup>	USA	2011	Observational study	Anatomic: Revascularization was defined as reduction of stenosis to <50% in all diseased (≥70% stenosis) lesions in major epicardial coronary vessels (left anterior descending artery and major diagonals; left circumflex artery and large marginal branches; and right coronary artery and right posterior descending artery) in the index hospitalization or within 30 days after discharge from the index hospitalization before having a new MI. However, if the patient had an MI before the CR was completed, this was not regarded as CR because of the occurrence of an adverse event before CR was attained	When a CR was not achieved during a stenting procedure, it was defined as a procedure with IR.	13 016	NA	8	30	31	NA	6

Continued

**Table 2.** Continued

Name	Country	Year	Study Type	CR Definition	IR Definition	Number of Patients	ACS%	Follow Up Years	CR Prevalence	% Female	Mean Age, y	NOS
Wu et al <sup>44</sup>	USA	2013	Observational study	Anatomic: CR was defined when the postprocedural stenosis in each of the lesions was reduced to <50% in the index hospitalization or within 30 days in staged PCI procedures following discharge from the index hospitalization before the occurrence of a new MI	When CR was not achieved after the stenting procedure in the index admission or within 30 days of discharge, the revascularization was defined as IR	21 767	NA	5	31.4	33.5	NA	7
Yang et al <sup>49</sup>	China	2010	Observational study	Anatomic: Clinical lesions were defined as >50% stenosis of a main coronary artery or >70% stenosis of its primary branches. The definition of CR was the treatment of all lesions in the main coronary artery and primary branches	Incomplete coronary revascularization (ICR) was defined as treatment of main culprit lesions but not other clinical lesions	324	92	1.5	22	22	61	6
George et al <sup>50</sup>	UK	2014	Observational study	Successful PCI to the target CTO and postprocedural obstruction of <50% in all major epicardial coronary arteries	Successful PCI to the target CTO but with residual obstruction of >50% in ≥1 other vessels	13 443	NA	2.65	NA	21	63.5	6
Hannan et al <sup>51</sup>	USA	2016	Observational study	Defined as a residual stenosis of <50% for all lesions with preprocedural stenoses of at least 70%. The reference category for the variable was successful CTO PCI and CR of all other lesions with preprocedural stenosis of at least 70%. Also, if a CTO or non-CTO PCI was successful in a staged admission, that patient was regarded as having undergone a successful PCI	NA	4030	NA	1.8	61	22.4	63.2	6
Danzi et al <sup>52</sup>	Italy	2013	Observational study	Defined as a TIMI flow grade 3 with residual stenosis of <30% on visual assessment in the 3 coronary arteries and their major branches (branch diameter of >2 mm)	NA	120	33.3	2	63.3	7.5	68	6
Chang et al <sup>53</sup>	South Korea	2016	Prospective cohort study	Absence of diameter stenosis ≥50% in major epicardial coronary arteries or their side branches with a diameter ≥2.5 mm after successful stent implantation during index hospitalization irrespective of the function or viability of relevant myocardium	Not meeting the CR criteria	3901	54.1	4.9	50	30	63	8

ACS indicates acute coronary syndrome; CR, complete revascularization; CTO, chronic total occlusion; IR, incomplete revascularization; NOS, Newcastle-Ottawa Scale; PCI, percutaneous coronary intervention; SRI, SYNTAX revascularisation index; SYNTAX, Synergy between Percutaneous Coronary Intervention with Taxus and Cardiac Surgery; TIMI, thrombolysis in myocardial infarction.

**Table 3.** Results of Studies That Evaluated Incomplete Revascularization and Adverse Outcomes

Study	Results
Appleby et al <sup>32</sup>	Better survival with CR (87±1% vs 78±1%, <i>P</i> <0.001). Residual disease significant independent predictor of the need for repeat procedures
Bourassa et al <sup>33</sup>	CR (n 579) (%) IR (n 317) (%) <i>P</i> Value Death 87.5 84.0 0.13 MI 83.8 84.1 0.91 Repeat revascularization 46.3 42.8 0.48 Angina 79.8 75.6 0.22
Breeman et al <sup>34</sup>	At 1 month PTCA Remaining lesions 0 1 2 ≥3 Death (%) 2.1 0.7 0.8 2.5 MI (%) 4.9 2.8 3.3 5.0 (Repeat revascularization) CABG (%) 2.8 1.4 7.4 20.2 (Repeat revascularization) PTCA (%) 4.2 3.5 5.7 5.9 At 1 year PTCA Remaining lesions 0 1 2 ≥3 Death (%) 5.4 2.0 3.3 5.0 MI (%) 5.4 3.4 4.9 6.7 (Repeat revascularization) CABG (%) 7.4 9.5 18.0 37.0 (Repeat revascularization) PTCA (%) 25.0 22.5 23.8 19.3
Capodanno et al <sup>21</sup>	Cardiac mortality at 2 years: 3.3%, 4.5%, and 19.8% in the CR
Chung et al <sup>35</sup>	Propensity score-matched (n=550) Adjusted HR [95% CI] Death 0.66 [0.34-1.28] Death and MI 0.51 [0.28-0.95] Death, MI, and repeat revascularization 0.84 [0.60-1.19] Cardiac death 0.50 [0.18-1.40] Cardiac death and MI 0.39 [0.16-0.96] Any adverse cardiac events 0.93 [0.64-1.35]
D'Oliveira Vieira et al <sup>36</sup>	A statistically significant difference was observed for the PCI group (CR, 6 individuals died, IR 20 individuals died)
Deligonul et al <sup>37</sup>	Outcomes Events/CR Total Events/IR Total Repeat revascularization CABG/PTCA 24/118, 73/255 MI 3/118, 9/255 Death 6/118, 14/255
Gao et al <sup>7</sup>	At 36 months, cardiac death was significantly greater in the IR cohort (2.55% vs 1.13%, log-rank test: <i>P</i> =0.016), but there was no difference in the 3-year rates of MI, TVR, and MACE between the 2 cohorts. Angiographic IR had a greater risk of cardiac death (adjusted hazard ratio [HR] 2.56, 95% confidence interval [CI] 1.03-6.41)
Généreux et al <sup>6</sup>	At 60 months, rates of MACE were linked with IR
Hambraeus et al <sup>13</sup>	Unadjusted HR (IR compared with CR): repeat revascularization 2.05 (95% CI 1.80-2.32; <i>P</i> <0.0001); combined endpoint of death/MI, HR was 1.92 (95% CI 1.77-2.09; <i>P</i> <0.0001) for IR compared with CR
Hannan et al <sup>4</sup>	Adjusted HR for IR patients compared to CR patients for death was 1.15 (95% CI 1.01-1.30). Repeat revascularization: 10.09% for CR patients and 11.46% for IR patients ( <i>P</i> =0.16)
Hannan et al <sup>38</sup>	(IR vs CR) 18-month mortality (adjusted HR 1.23, 95% CI 1.04-1.45) and 18-month MI/mortality (adjusted HR 1.27, 95% CI 1.09-1.47). The adjusted survival rates for CR and IR were 94.9% and 93.8% ( <i>P</i> =0.01), and the freedom-from-MI rates were 93.3% and 91.7% ( <i>P</i> =0.002)
Ijsselmuiden et al <sup>9</sup>	(IR vs CR) MACE rates at 1 month (14.4% vs 9.3%), 1 year (32.4% vs 26.9%), and 4.6±1.2 years (40.4% vs 34.6%) were similar in both cohorts
Kobayashi et al <sup>18</sup>	Patients with MACE had comparable RSS and SRI after PCI: RSS 6.0 [IQR 3.0-10.0] vs 5.0 [IQR 2.0-9.5], <i>P</i> =0.51; SRI 60.0% [IQR 40.9%-78.9%] vs 58.8% [IQR 26.7%-81.8%], <i>P</i> =0.24, respectively. Kaplan-Meier analysis showed comparable 12-month rate of MACE with different RSS/SRI (log-rank <i>P</i> =0.55 and 0.54, respectively)
Kim et al <sup>39</sup>	(CR vs IR) MACE HR 0.82 (95% CI 0.58-1.15), MACCE HR 0.90 (95% CI 0.75-1.09)
Kip et al <sup>40</sup>	Outcomes Events/CR Total Events/IR Total Repeat revascularization 328/59, 237/399 Death 55/595, 47/399

Continued

Table 3. Continued

Study	Results
Kloeter et al <sup>41</sup>	Outcomes Events/CR Total Events/IR Total Repeat revascularization 10/101 23/149 MI 1/101 1/149 Death 0/101 3/149 Complete revascularization had considerably higher clinical restenosis (35% vs 22%, <i>P</i> =0.02)
Malkin et al <sup>22</sup>	Complete revascularization was significantly linked with survival (Adjusted OR 3.1, 95% CI 1.7-5.6)
Malkin et al <sup>23</sup>	Outcomes Events/CR Total Events/IR Total Death 6/98 29/142 <i>P</i> <0.001
Mariani et al <sup>71</sup>	Outcomes Events/CR Total Events/IR Total Repeat revascularization 1/49 7/159 MI 4/49 5/159 Death 0/49 2/159 In-hospital MACE occurred in 10% and 7.5% of patients with CR and IR, respectively ( <i>P</i> =NS). At 12 months, the reported MACE was 11.3% and 11.5% of patients with CR and IR, respectively
Nikolsky et al <sup>42</sup>	Survival in CR was 94.5%, vs 83.0% for those with IR ( <i>P</i> <0.001). MI-free survival was considerably greater in patients with CR than in those with IR (92.9% vs 79.9%, respectively). IR was a prognosticator of mortality (95% CI 1.54-7.69; <i>P</i> =0.003)
Norwa-Otto et al <sup>43</sup>	There was no difference in mortality, cardiovascular deaths, or MI between CR and IR cohorts. The IR had a higher rate of repeat revascularization
Park et al <sup>17</sup>	Outcomes Events/CR Total Events/IR Total MACCE 114/2173 297/2915 Death 28/2173 65/2915 Myocardial infarction 4/2173 19/2915 Unplanned revascularization 86/2173 225/2915 Definite/probable stent thrombosis 11/2173 21/2915
Rosner et al <sup>8</sup>	(IR vs CR) Unadjusted HR (95% CI) for IR vs CR: death 1.43 (0.90-2.27); repeat revascularization 1.58 (1.28-1.96); MI 1.50 (1.18-1.89); MACE 1.47 (1.24 -1.74)
Sarno et al <sup>44</sup>	MACCEs in the 87% of the CR cohort at 24 months and 75% at 60 months. Definite stent thrombosis occurred in 2.6% of the IR cohort and 3.9% of the CR cohort ( <i>P</i> =0.45); definite or probable stent thrombosis occurred in 6.5% in the IR cohort vs 8.6% in the CR cohort ( <i>P</i> =0.41)
Sohn et al <sup>20</sup>	(CR vs IR) MACCE 34.7% vs 45.1%; adjusted hazard ratio [HR] 0.65, 95% CI 0.44-0.95, <i>P</i> =0.03; all-cause death adjusted HR 0.48, 95% CI 0.29-0.80, <i>P</i> <0.01
Song et al <sup>45</sup>	(CR vs IR) MACE HR 0.64, 95% CI 0.46-0.88, <i>P</i> =0.01; revascularization HR 0.61, 95% CI 0.42-0.90, <i>P</i> =0.01; death HR 0.87, 95% CI 0.48-1.57, <i>P</i> =0.64; MI HR 0.62, 95% CI 0.23-1.67, <i>P</i> =0.35. The rate of periprocedural MI and stent thrombosis was comparable in the 2 cohorts (4.7% in the CR group vs 3.6% in the IR group, <i>P</i> =0.42; 1.6% vs 1.3%, <i>P</i> =0.72, respectively)
Srinivas et al <sup>46</sup>	(CR vs IR) mortality HR 1.10 (95% CI 0.58-2.10) and repeat revascularization HR 0.92 (96% CI 0.66-1.29)
Tamburino et al <sup>47</sup>	(CR vs IR) primary composite endpoint HR 0.43 (0.29-0.63, <i>P</i> <0.0001), cardiac death HR 0.37 (0.15-0.92, <i>P</i> =0.03), combination of cardiac death or MI HR 0.34 (0.16-0.75, <i>P</i> =0.008), and repeat revascularization HR 0.45 (0.29-0.69, <i>P</i> =0.0003)
Valenti et al <sup>48</sup>	The survival rates were 91.6% and 87.4% in the CR and IR cohorts, respectively ( <i>P</i> =0.025). CR was inversely proportional to mortality (HR 0.44, 95% CI 0.22-0.87, <i>P</i> =0.021)
Van den Brand et al <sup>31</sup>	Outcomes Events/CR Total Events/IR Total Unplanned revascularization 34/406 61/170 Myocardial infarction 20/406 10/170 Death 7/406 6/170
Wu et al <sup>5</sup>	Death (HR 1.12, 95% CI 1.01-1.26, <i>P</i> =0.04). Eight-year survival was 78.5% and 80.8% for IR and CR ( <i>P</i> =0.04). Mortality IR vs CR (adjusted HR 1.16, 95% CI 1.06-1.26, <i>P</i> =0.001)
Wu et al <sup>24</sup>	Among 6511 propensity-matched individuals (IR compared to CR) (79.3% vs 81.4%, <i>P</i> =0.004), and death (HR 1.16, 95% CI 1.06-1.27). Five-year survival rate (IR 79.3% vs CR 81.4%, <i>P</i> =0.004)

Continued

Table 3. Continued

Study	Results
Yang et al <sup>49</sup>	No differences in outcomes between the 2 cohorts at follow-up. Outcomes Events/CR Total Events/IR Total Repeat revascularization 4/99 17/255 MI 1/99 4/255 Death 3/99 7/255
George et al <sup>50</sup>	(CR vs IR) Mortality (adjusted HR 0.70, 95% CI 0.56-0.87, $P=0.002$ )
Hannan et al <sup>51</sup>	2.5-year Mortality CR vs CR for CTO, incomplete for $\geq 1$ other lesions adjusted HR 1.11 (0.74, 1.68). 2.5-year mortality CR vs IR for CTO adjusted HR 1.63 (1.28, 2.08), $P<0.0001$
Danzi et al <sup>52</sup>	Two-year cardiac death-free survival was better in the CR cohort compared to IR (96 vs 78 $P=0.002$ )
Chang et al <sup>53</sup>	IR with drug-eluting stents in multivessel disease was associated with increased MI risk (HR 1.86, 95% CI 1.08-3.19, $P=0.024$ ) and similar risk of death (HR 1.03, 95% CI 0.80-1.32; $P=0.83$ ) compared to CR

CABG indicates coronary artery bypass grafting; CR, complete revascularization; CTO, chronic total occlusion; IR, incomplete revascularization; MACE, major adverse cardiac events; MI, myocardial infarction; PCI, percutaneous coronary intervention; PTCA, percutaneous transluminal coronary angioplasty; RSS, residual SYNTAX score; SRI, SYNTAX revascularisation index.

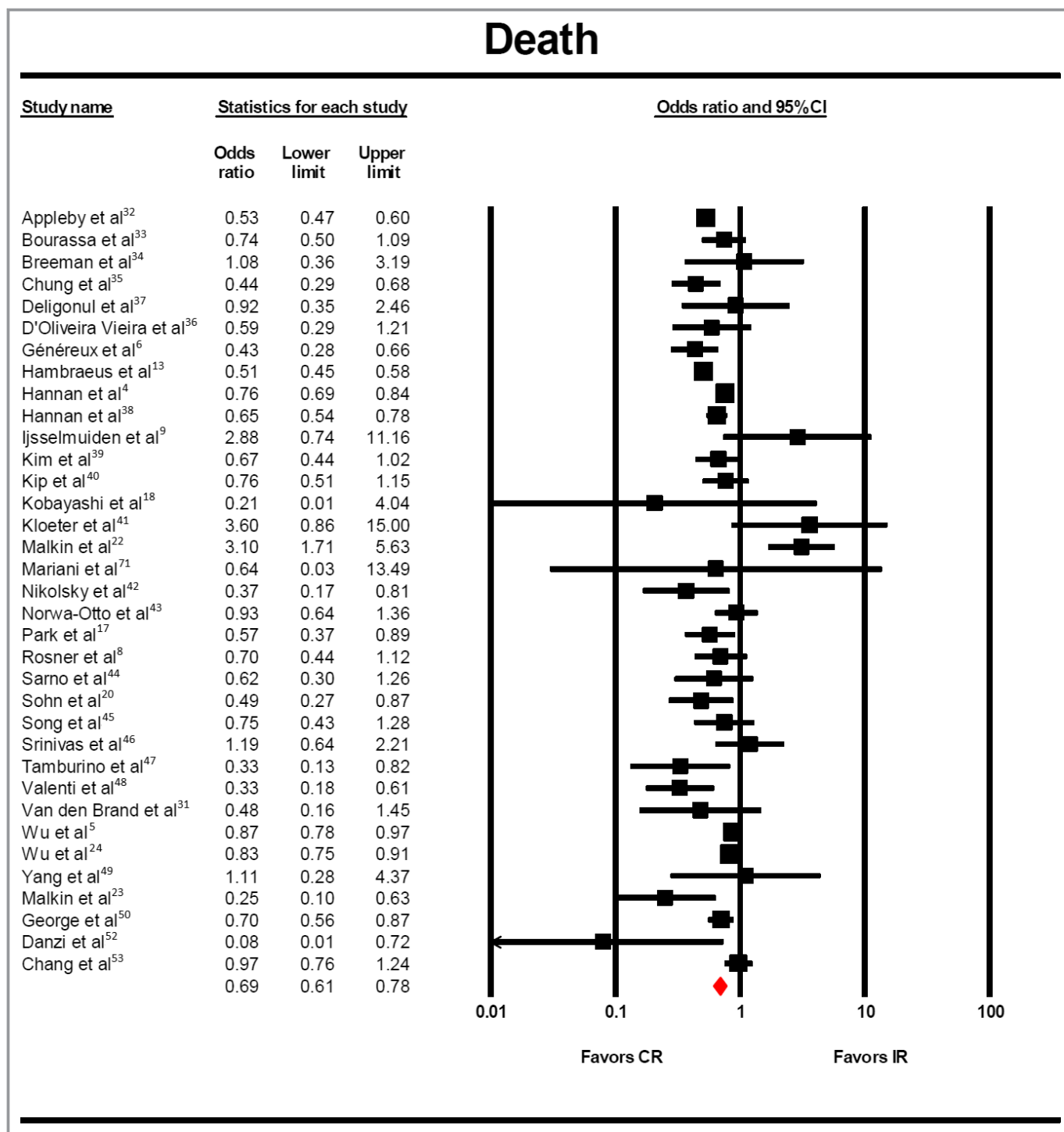
There are several reasons why IR might not be achieved in PCI including patient clinical characteristics, lesion characteristics, failed PCI, and operator choice. Independent predictors of IR include advanced age, race, impaired LV function, previous MI, and comorbidities such as peripheral arterial disease, heart failure, diabetes, and renal failure.<sup>38</sup> The most common lesion/anatomical characteristics for not achieving CR with PCI in SYNTAX were the presence of CTO (OR 2.46, 95% CI 1.81-3.39;  $P<0.01$ ), bifurcation disease (RR 1.44, 95% CI 1.09-1.89;  $P<0.01$ ), and diffuse disease or small vessels ( $<2$  mm) (RR 1.53, 95% CI 1.12-2.10,  $P<0.008$ ).<sup>72</sup>

Previous studies have shown that patients with IR have a greater prevalence of adverse clinical characteristics, are older, and have more complex lesions than patients with CR.<sup>8,35,38,39,73</sup> These adverse procedural characteristics might contribute to the associations reported. Most of the studies included in this analysis are derived from registry data; hence, the decision not to undertake CR by the operator may reflect uncaptured comorbid conditions/general frailty of the patient and so act as a surrogate of poor health status of the patients, which will contribute to the poorer outcomes reported. Although nearly all of the studies have adjusted for differences in baseline characteristics, the possibility of unmeasured confounding, particularly in studies derived from registry data, is significant. Furthermore, the increased risk associated with IR may relate to the complexity/extensiveness of coronary artery disease at baseline. For example, a post hoc analysis of the ARTS trial revealed that IR was associated with worse outcomes only in patients in the highest SYNTAX score tertile, whereas in the low and middle tertiles IR was not an independent predictor of adverse outcomes.<sup>44</sup>

Our analysis does not allow comparison of outcomes of patients undergoing IR in different settings such as elective versus the ACS because the majority of studies do not report

outcomes by clinical presentation. The subgroup analysis of ACS of 2 studies<sup>8,71</sup> did not show any difference in mortality or MACE between the 2 cohorts. The studies were heterogeneous, and 1 of them<sup>71</sup> was not large enough to detect the difference among the cohorts. Nevertheless, it has been demonstrated that complete revascularization in STEMI confers survival benefit.<sup>10-12</sup> More recently, for example, the DANAMI-3-PRIMULTI trial reported a 44% reduction in the primary endpoint of all-cause mortality, nonfatal myocardial infarction, and repeat revascularization (HR 0.56, 95% CI 0.38-0.83;  $P=0.004$ ). Following these trials, multiple meta-analyses<sup>56,63,65,74-76</sup> have suggested a significant survival advantage in complete revascularization in patients with STEMI. Similarly, in the post hoc analysis of the ACUITY Trial,<sup>8</sup> which included 2954 ACS patients, IR is associated with an increased risk of MACE. Unstable angina accounted for approximately one third of the patients in the SYNTAX<sup>6</sup> and FAME trials.<sup>18,77,78</sup> In the post hoc analysis<sup>18</sup> of the FAME trial, CR was compared to IR in patients who underwent FFR-guided PCI. There was no significant difference in survival between stable and unstable individuals at 24 months, indicating a consistent treatment effect with the FFR intervention. Further, a post hoc analysis of the SYNTAX trial<sup>6</sup> performed subgroup analysis based on SYNTAX Revascularization Index  $<70\%$  versus  $>70\%$ . The OR for patients with unstable angina was 3.25 (95% CI 3.37-11.25), clearly indicating a survival advantage for patients with CR.

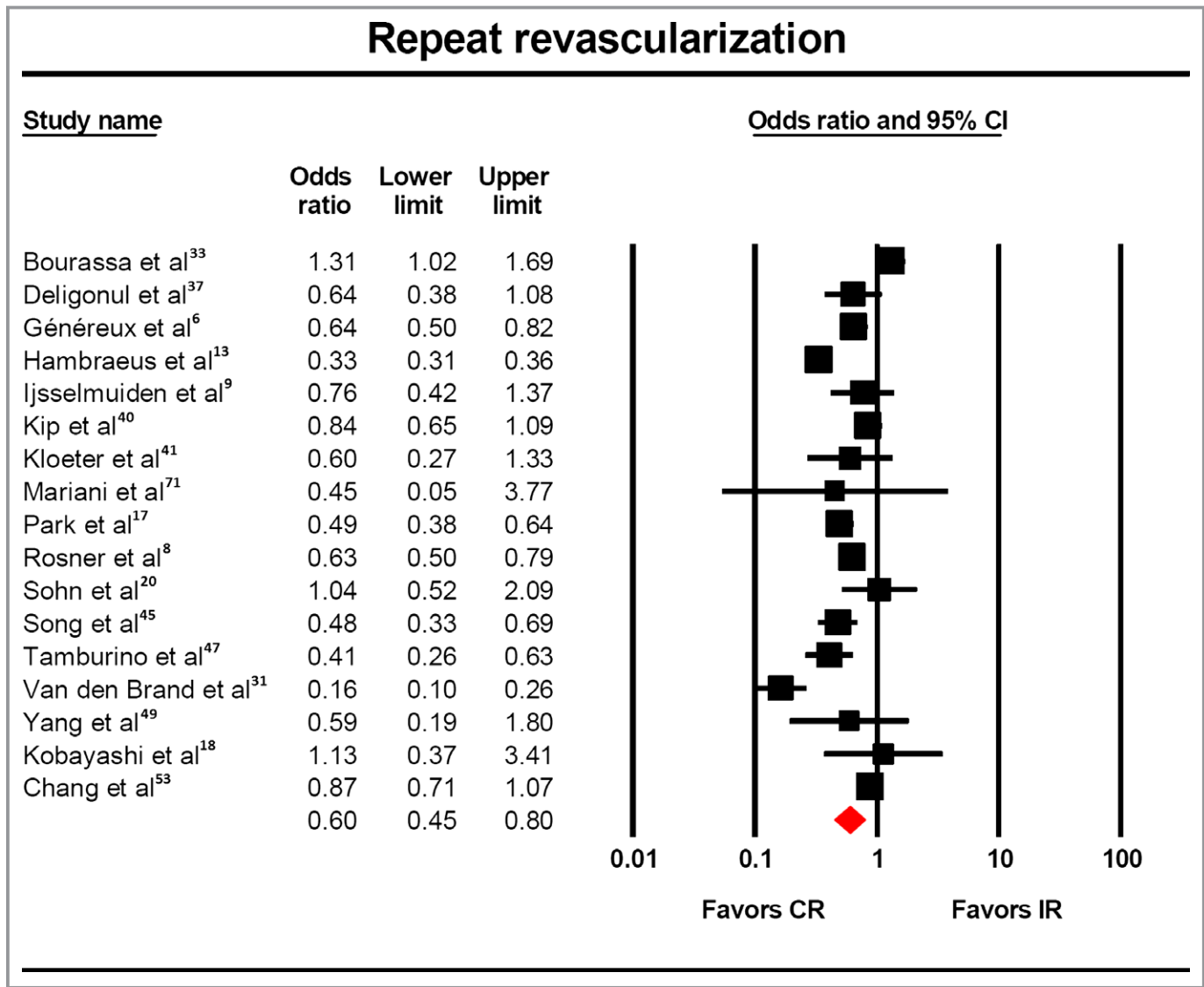
Our meta-regression analysis suggests that outcomes relate to the degree of CR, in agreement with several previous studies. Indeed, post hoc analysis of the SYNTAX trial suggests higher degrees of IR, as measured by the SYNTAX revascularization index, were associated with increased 5-year cardiac death, AMI, and major adverse cardiac or cerebrovascular events (MACCE).<sup>6</sup> Similarly, Park et al<sup>17</sup> showed in the EXCELLENT registry that patient-orientated



**Figure 2.** Risk of death with complete vs incomplete revascularization. The odds of death (OR:0.69, 95% CI: 0.61–0.78) was significantly lower in the patients who underwent complete revascularization. CR indicates complete revascularization; IR, incomplete revascularization.

composite endpoint rates (POCE) increased with increasing residual syntax score tertiles. Finally, CTO revascularization has been a matter of debate in recent years.<sup>50,79-81</sup> Contemporary evidence from a large UK registry of 13 443 individuals with CTO<sup>50</sup> suggests that complete revascularization had a survival advantage over partial revascularization with a hazard

ratio of 0.70 (95% CI 0.56-0.87). Our study confirms survival benefit regarding complete revascularization of CTO with an OR of 0.69 (95% CI 0.61-0.78). Similarly, a meta-analysis of 7288 patients<sup>81</sup> suggested that successful CTO recanalization had a survival advantage and reduced surgical revascularization.



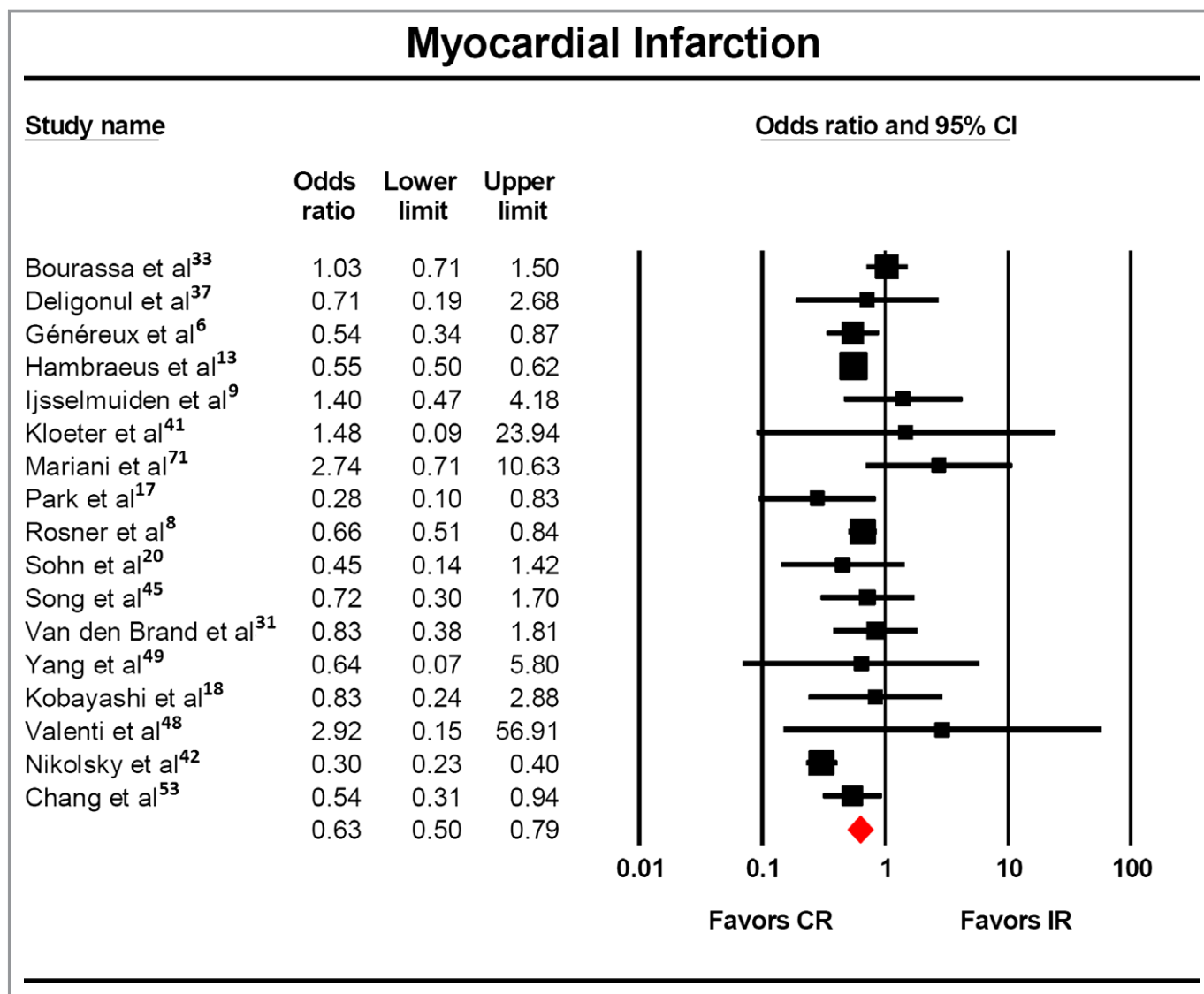
**Figure 3.** Risk of repeat revascularization with complete vs incomplete revascularization. The odds of repeat revascularization (OR: 0.60, 95% CI: 0.45–0.80) was significantly lower in the patients who underwent complete revascularization. CR indicates complete revascularization; IR, incomplete revascularization.

### Limitations

There are several limitations associated with our analysis. First, although we report an association between IR and adverse clinical outcomes, we cannot infer a causal relationship. We have shown an association between IR and adverse outcomes, but it cannot be assumed that treating such patients with IR with additional PCI to attain CR would improve their prognosis. Second, for anatomical based definitions of IR, there are no universally accepted definitions of lesion “significance” with studies defining significant lesions as those with diameter stenosis (DS) varying between  $\geq 50\%$  and  $\geq 70\%$  in vessels of diameter  $\geq 1.5$  mm in some studies to  $\geq 2.5$  mm in other studies. Many of the studies included in this analysis used visual assessment to define

lesion severity, which is known to have greater interobserver variability and to overestimate percentage DS compared with quantitative coronary angiograph (QCA).<sup>82</sup> Interestingly, a post hoc analysis of the ACUITY trial using QCA illustrated that even when  $DS \geq 30\%$  was used to define a significant lesion, IR was independently associated with an increased risk of MACE (HR 1.36, 95% CI 1.11-1.68), although the risk increased with increasing DS thresholds (for DS threshold of  $\geq 70\%$ , HR 1.59, 95% CI 1.30-1.93). Score-based definitions of IR, such as the residual SYNTAX score, overcome some of the limitations around differences in anatomical definitions of lesion significance used across studies, allowing comparisons to be made more easily. In the current analysis we report a similar prognostic impact of IR irrespective of whether this is defined by anatomical or score-based definitions.

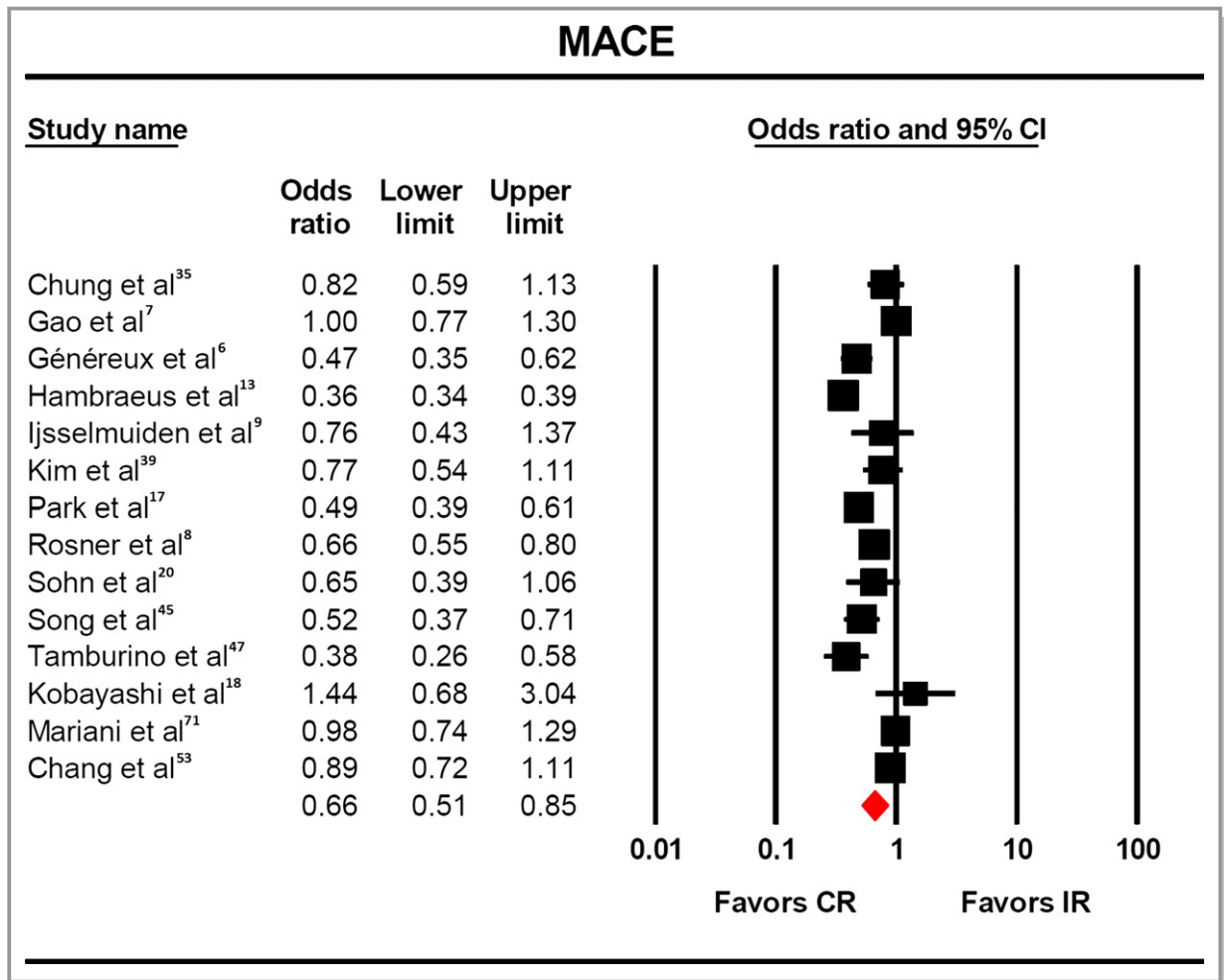




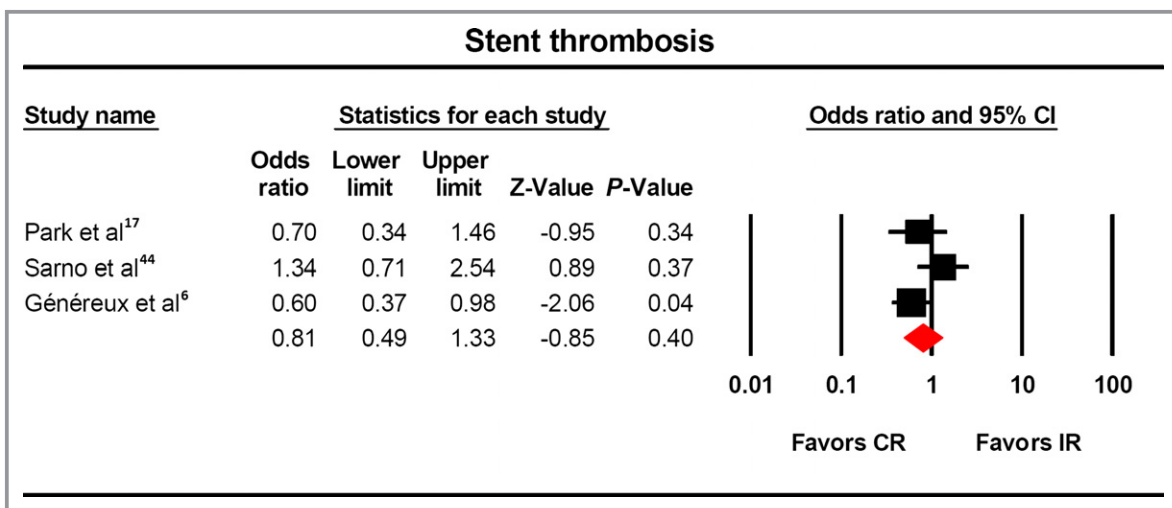
**Figure 4.** Risk of myocardial infarction with complete vs incomplete revascularization. The odds of myocardial infarction (OR: 0.64, 95% CI: 0.50–0.81) was significantly lower in the patients who underwent complete revascularization. CR indicates complete revascularization; IR, incomplete revascularization.

Third, contemporary studies have shown that the functional significance of lesions on the basis of fractional flow reserve is a more important determinant of future cardiac events than anatomical/angiographic appearances.<sup>18,83-85</sup> Operators may choose not to revascularize lesions due to their functional nonsignificance or location within vessels supplying infarcted and nonviable myocardium. A recent post hoc analysis of the FAME study<sup>18</sup> demonstrated that IR (as defined by residual SYNTAX score and SYNTAX revascularization index) was not associated with adverse outcome in the setting of complete functional revascularization, supporting the hypothesis that functional CR is more important than anatomical CR. The remaining studies that report outcomes following IR included in this analysis (with the exception of the aforementioned study<sup>18</sup>)

do not differentiate between the anatomical and the functional significance of incompletely revascularized lesions. The differences in the prognostic impact of incomplete revascularization across the different studies analyzed in this meta-analysis may relate to the above limitations, mainly variability in the definition of what is considered to be a significant coronary lesion, the site of the lesion, whether the lesions that were not revascularized were in infarcted nonviable territories or were functionally significant, the sample size of the cohort studied, and whether this would be adequately powered to detect a statistically significant difference and the nature of the cohort studied. Finally, most of the studies included in this analysis are derived from registry data; hence, the decision not to undertake CR by the operator may reflect



**Figure 5.** Risk of MACE with complete vs incomplete revascularization. The odds of MACE (OR:0.66, 95% CI: 0.51–0.85) were significantly lower in the patients who underwent complete revascularization. CR indicates complete revascularization; IR, incomplete revascularization, MACE, major adverse cardiac events.



**Figure 6.** Risk of stent thrombosis with complete vs incomplete revascularization. There was no difference in the rate of stent thrombosis among the two cohorts. CR indicates complete revascularization; IR, incomplete revascularization.

**Table 4.** Pooled OR and 95% CI for the Studies Included in the Meta-Analysis

Outcome	Subgroup Analysis	OR	95% CI	I <sup>2</sup>	P Value
Death	All	0.69	0.61 to 0.78	77.03	<0.001
	Anatomic	0.69	0.61 to 0.79	80.60	<0.001
	Scored based	0.73	0.50 to 1.07	60.81	0.03
	CTO	0.65	0.53 to 0.80	68.13	<0.001
	Non-CTO	0.71	0.61 to 0.82	78.6	<0.001
	ACS	0.71	0.44 to 1.11	0	0.95
Repeat revascularization	All	0.60	0.45 to 0.80	92.87	<0.001
	Anatomic	0.58	0.41 to 0.82	94.23	<0.001
	Scored based	0.64	0.54 to 0.76	0	0.59
MI	All	0.63	0.50 to 0.79	62.4	<0.001
	Anatomic	0.60	0.45 to 0.81	65.86	0.07
	Scored based	0.64	0.51 to 0.79	0.00	0.72
MACE	All	0.66	0.51 to 0.85	93.29	<0.001
	Anatomic	0.64	0.46 to 0.89	94.5	<0.001
	Scored based	0.68	0.50 to 0.93	70.87	0.02
	ACS	0.79	0.54 to 1.17	81.86	0.02
Stent thrombosis	All	0.81	0.49 to 1.33	49.2	0.14

ACS indicates acute coronary syndrome; CI, confidence interval; CTO, chronic total occlusion; I<sup>2</sup>, Cochrane Q-statistic; MACE, major adverse cardiovascular event; MI, myocardial infarction; OR, odds ratio.

uncaptured comorbidity or general frailty of the patient and so act as a surrogate of poor health status of the patients that will contribute to the poorer outcomes reported. Although nearly all of the studies have adjusted for differences in baseline characteristics, there remains a possibility of unmeasured confounding.

In conclusion, our analysis of data derived from over 150 000 patients undergoing PCI suggests that fewer than half of all patients with multivessel coronary artery disease have CR following PCI. We observe that CR is associated with decreased incidence of mortality, myocardial infarction, and MACE, irrespective of whether an anatomical or a score-based definition of IR was used and that the magnitude of risk relates to degree of CR. The findings of our analysis have several practical implications for interventional cardiologists. Our reported associations between IR and adverse clinical outcomes suggest that in patients with MVD, consideration should be given to the degree of CR that can be achieved by PCI when discussing choice of revascularization modality within the heart team, in addition to consideration of lesion complexity, functional significance, patient characteristics, and syntax score in line with current international recommendations.<sup>86</sup> At the very least these data speak of the need for further carefully conducted randomized trials to address this question.

### Author Contributions

Mamas conceived and planned the study. Nagaraja and Ooi performed the search, screened relevant studies, extracted data from the studies, and performed the analysis. Mamas wrote the first draft of the paper. All authors contributed to the interpretation of the findings and reporting of the work and edited the manuscript for significant intellectual content.

### Acknowledgments

The authors acknowledge the North Staffs Heart Committee for providing support for this study.

### Sources of Funding

This work was funded by the North Staffs Heart Committee.

### Disclosures

None.

### References

1. Iqbal J, Serruys PW, Taggart DP. Optimal revascularization for complex coronary artery disease. *Nat Rev Cardiol.* 2013;10:635–647.

2. Fröbert O, Lagerqvist B, Olivecrona GK, Omerovic E, Gudnason T, Maeng M, Aasa M, Angeräs O, Calais F, Danielewicz M, Erlinge D, Hellsten L, Jensen U, Johansson AC, Käregren A, Nilsson J, Robertson L, Sandhall L, Sjögren I, Ostlund O, Harnek J, James SK. Thrombus aspiration during ST-segment elevation myocardial infarction. *N Engl J Med*. 2013;369:1587–1597.
3. Wallentin L, Lagerqvist B, Husted S, Kontny F, Stahle E, Swahn E. Outcome at 1 year after an invasive compared with a non-invasive strategy in unstable coronary-artery disease: the FRISC II invasive randomised trial. FRISC II Investigators. *Lancet*. 2000;356:9–16.
4. Hannan EL, Racz M, Holmes DR, King SB III, Walford G, Ambrose JA, Sharma S, Katz S, Clark LT, Jones RH. Impact of completeness of percutaneous coronary intervention revascularization on long-term outcomes in the stent era. *Circulation*. 2006;113:2406–2412.
5. Wu C, Dyer AM, King SB III, Walford G, Homes DR Jr, Stamato NJ, Venditti FJ, Sharma SK, Fergus I, Jacobs AK, Hannan EL. Impact of incomplete revascularization on long-term mortality after coronary stenting. *Circ Cardiovasc Interv*. 2011;4:413–421.
6. Généreux P, Campos CM, Farooq V, Bourantas CV, Mohr FW, Colombo A, Morel MA, Feldman TE, Holmes DR Jr, Mack MJ, Morice MC, Kappetein AP, Palmerini T, Stone GW, Serruys PW. Validation of the SYNTAX revascularization index to quantify reasonable level of incomplete revascularization after percutaneous coronary intervention. *Am J Cardiol*. 2015;116:174–186.
7. Gao Z, Xu B, Yang YJ, Yuan JQ, Chen J, Chen JL, Qiao SB, Wu YL, Yan HB, Gao RL. Long-term outcomes of complete versus incomplete revascularization after drug-eluting stent implantation in patients with multivessel coronary disease. *Catheter Cardiovasc Interv*. 2013;82:343–349.
8. Rosner GF, Kirtane AJ, Genereux P, Lansky AJ, Cristea E, Gersh BJ, Weisz G, Parise H, Fahy M, Mehran R, Stone GW. Impact of the presence and extent of incomplete angiographic revascularization after percutaneous coronary intervention in acute coronary syndromes: the Acute Catheterization and Urgent Intervention Triage Strategy (ACUITY) trial. *Circulation*. 2012;125:2613–2620.
9. Ijsselmuiden AJ, Ezechiels J, Westendorp IC, Tijssen JG, Kiemeneij F, Slagboom T, van der Wieden R, Tangelde G, Serruys PW, Laarman G. Complete versus culprit vessel percutaneous coronary intervention in multivessel disease: a randomized comparison. *Am Heart J*. 2004;148:467–474.
10. Wald DS, Morris JK, Wald NJ, Chase AJ, Edwards RJ, Hughes LO, Berry C, Oldroyd KG. Randomized trial of preventive angioplasty in myocardial infarction. *N Engl J Med*. 2013;369:1115–1123.
11. Gershlick AH, Khan JN, Kelly DJ, Greenwood JP, Sasikaran T, Curzen N, Blackman DJ, Dalby M, Fairbrother KL, Banya W, Wang D, Flather M, Hetherington SL, Kelion AD, Talwar S, Gunning M, Hall R, Swanton H, McCann GP. Randomized trial of complete versus lesion-only revascularization in patients undergoing primary percutaneous coronary intervention for STEMI and multivessel disease: the CvLPRIT trial. *J Am Coll Cardiol*. 2015;65:963–972.
12. Engstrom T, Kelbaek H, Helqvist S, Hofsten DE, Klovgaard L, Holmvang L, Jorgensen E, Pedersen F, Saunamaki K, Clemmensen P, de Backer O, Ravkilde J, Tilsted HH, Villadsen AB, Aaroe J, Jensen SE, Raungard B, Kober L. Complete revascularisation versus treatment of the culprit lesion only in patients with ST-segment elevation myocardial infarction and multivessel disease (DANAMI-3-PRIMULTI): an open-label, randomised controlled trial. *Lancet*. 2015;386:665–671.
13. Hambraeus K, Jensevik K, Lagerqvist B, Lindahl B, Carlsson R, Farzaneh-Far R, Kellerth T, Omerovic E, Stone G, Varenhorst C, James S. Long-term outcome of incomplete revascularization after percutaneous coronary intervention in SCAAR (Swedish Coronary Angiography and Angioplasty Registry). *JACC Cardiovasc Interv*. 2016;9:207–215.
14. Task Force Members, Montalescot G, Sechtem U, Achenbach S, Andreotti F, Arden C, Budaj A, Bugiardini R, Crea F, Cuisset T, Di Mario C, Ferreira JR, Gersh BJ, Gitt AK, Hulot JS, Marx N, Opie LH, Pfisterer M, Prescott E, Ruschitzka F, Sabaté M, Senior R, Taggart DP, van der Wall EE, Vrints CJ; ESC Committee for Practice Guidelines, Zamorano JL, Achenbach S, Baumgartner H, Bax JJ, Bueno H, Dean V, Deaton C, Erol C, Fagard R, Ferrari R, Hasdai D, Hoes AW, Kirchhof P, Knuuti J, Kolh P, Lancellotti P, Linhart A, Nihoyannopoulos P, Piepoli MF, Ponikowski P, Sirnes PA, Tarmago JL, Tendera M, Torbicki A, Wijns W, Windecker S; Document Reviewers, Knuuti J, Valgimigli M, Bueno H, Claeys MJ, Donner-Banzhoff N, Erol C, Frank H, Funck-Brentano C, Gaemperli O, Gonzalez-Juanatey JR, Hämäläinen M, Hasdai D, Husted S, James SK, Kervinen K, Kolh P, Kristensen SD, Lancellotti P, Maggioni AP, Piepoli MF, Pries AR, Romeo F, Rydén L, Simoons-Sel A, Sirnes PA, Steg PG, Timmis A, Wijns W, Windecker S, Yildirim A, Zamorano JL. 2013 ESC guidelines on the management of stable coronary artery disease: the Task Force on the management of stable coronary artery disease of the European Society of Cardiology. *Eur Heart J*. 2013;34:2949–3003.
15. Levine GN, Bates ER, Blankenship JC, Bailey SR, Bittl JA, Cercek B, Chambers CE, Ellis SG, Guyton RA, Hollenberg SM, Khot UN, Lange RA, Mauri L, Mehran R, Moussa ID, Mukherjee D, Nallamothu BK, Ting HH. 2011 ACCF/AHA/SCAI guideline for percutaneous coronary intervention. A report of the American College of Cardiology Foundation/American Heart Association Task Force on Practice Guidelines and the Society for Cardiovascular Angiography and Interventions. *J Am Coll Cardiol*. 2011;58:e44–e122.
16. Garcia S, Sandoval Y, Roukoz H, Adabaq S, Canoniero M, Yannopoulos D, Brillakis ES. Outcomes after complete versus incomplete revascularization of patients with multivessel coronary artery disease: a meta-analysis of 89,883 patients enrolled in randomized clinical trials and observational studies. *J Am Coll Cardiol*. 2013;62:1421–1431.
17. Park KW, Kang J, Kang SH, Ahn HS, Kang HJ, Koo BK, Chae IH, Youn TJ, Oh BH, Park YB, Kandzari D, Kim HS. The impact of residual coronary lesions on clinical outcomes after percutaneous coronary intervention: residual SYNTAX score after percutaneous coronary intervention in patients from the Efficacy of Xience/Promus versus Cypher in rEducing Late Loss after stENTing (EXCELLENT) registry. *Am Heart J*. 2014;167:384–392.e5.
18. Kobayashi Y, Nam CW, Tonino PA, Kimura T, De Bruyne B, Lijls NH, Fearon WF. The prognostic value of residual coronary stenoses after functionally complete revascularization. *J Am Coll Cardiol*. 2016;67:1701–1711.
19. Genereux P, Campos CM, Yadav M, Palmerini T, Caixeta A, Xu K, Francese DP, Dangas GD, Mehran R, Leon MB, Serruys PW, Stone GW. Reasonable incomplete revascularisation after percutaneous coronary intervention: the SYNTAX Revascularisation Index. *EuroIntervention*. 2015;11:634–642.
20. Sohn GH, Yang JH, Choi SH, Song YB, Hahn JY, Choi JH, Gwon HC, Lee SH. Long-term outcomes of complete versus incomplete revascularization for patients with multivessel coronary artery disease and left ventricular systolic dysfunction in drug-eluting stent era. *J Korean Med Sci*. 2014;29:1501–1506.
21. Capodanno D, Chisari A, Giacoppo D, Bonura S, Lavanco V, Capranzano P, Caqqegi A, Ministeri M, Tamburino C. Objectifying the impact of incomplete revascularization by repeat angiographic risk assessment with the residual SYNTAX score after left main coronary artery percutaneous coronary intervention. *Catheter Cardiovasc Interv*. 2013;82:333–340.
22. Malkin CJ, Ghoobrial MS, Raina T, Siotia A, Morton AC, Gunn J. Impact of incomplete revascularization in patients undergoing PCI for unprotected left main stem stenosis. *Catheter Cardiovasc Interv*. 2013;81:939–946.
23. Malkin CJ, George V, Ghoobrial MS, Krishnan A, Siotia A, Raina T, Morton AC, Gunn J. Residual SYNTAX score after PCI for triple vessel coronary artery disease: quantifying the adverse effect of incomplete revascularisation. *EuroIntervention*. 2013;8:1286–1295.
24. Wu C, Dyer AM, Walford G, Holmes DR Jr, King SB III, Stamato NJ, Sharma S, Jacobs AK, Venditti FJ, Hannan EL. Incomplete revascularization is associated with greater risk of long-term mortality after stenting in the era of first generation drug-eluting stents. *Am J Cardiol*. 2013;112:775–781.
25. Moher D, Liberati A, Tetzlaff J, Altman DG. Preferred reporting items for systematic reviews and meta-analyses: the PRISMA statement. *J Clin Epidemiol*. 2009;62:1006–1012.
26. Wells GA, Shea B, O'Connell D, Peterson J, Welch V, Losos M, Tugwell P. The Newcastle-Ottawa Scale (NOS) for assessing the quality of nonrandomised studies in meta-analyses. Available at: [http://www.ohri.ca/programs/clinical\\_epidemiology/oxford.asp](http://www.ohri.ca/programs/clinical_epidemiology/oxford.asp). Accessed December 2, 2016.
27. Egger M, Smith GD, Schneider M, Minder C. Bias in meta-analysis detected by a simple, graphical test. *BMJ*. 1997;315:629–634.
28. Orwin R. A fail-safe N for effect size in meta-analysis. *J Educ Stat*. 1983;8:157–159.
29. DerSimonian R, Laird N. Meta-analysis in clinical trials. *Control Clin Trials*. 1986;7:177–188.
30. Higgins JP, Thompson SG, Deeks JJ, Altman DG. Measuring inconsistency in meta-analyses. *BMJ*. 2003;327:557–560.
31. van den Brand MJ, Rensing BJ, Morel MA, Foley DP, de Valk V, Breeman A, Suryapranata H, Haalebos MM, Wijns W, Wellens F, Balcon R, Magee P, Ribeiro E, Buffolo E, Unger F, Serruys PW. The effect of completeness of revascularization on event-free survival at one year in the ARTS trial. *J Am Coll Cardiol*. 2002;39:559–564.
32. Appleby CE, Mackie K, Dzavik V, Ivanov J. Late outcomes following percutaneous coronary interventions: results from a large, observational registry. *Can J Cardiol*. 2010;26:e218–e224.
33. Bourassa MG, Kip KE, Jacobs AK, Jones RH, Sopko G, Rosen AD, Sharaf BL, Schwartz L, Chaitman BR, Alderman EL, Holmes DR, Roubin GS, Detre KM, Frye RL. Is a strategy of intended incomplete percutaneous transluminal coronary angioplasty revascularization acceptable in nondiabetic patients who are candidates for coronary artery bypass graft surgery? The Bypass Angioplasty Revascularization Investigation (BARI). *J Am Coll Cardiol*. 1999;33:1627–1636.
34. Breeman A, Boersma E, van den Brand MJ, van Herwerden L, Serruys PW. Completeness of revascularisation by percutaneous coronary intervention. *Neth Heart J*. 2001;9:3–9.

35. Chung JW, Park KH, Lee MH, Park KW, Park JS, Kang HJ, Koo BK, Kwon YW, Kim HS. Benefit of complete revascularization in patients with multivessel coronary disease in the drug-eluting stent era. *Circ J*. 2012;76:1624–1630.

36. Vieira RD, Hueb W, Gersh BJ, Lima EG, Pereira AC, Rezende PC, Garzillo CL, Hueb AC, Favarrato D, Soares PR, Ramires JA, Kalil Filho R. Effect of complete revascularization on 10-year survival of patients with stable multivessel coronary artery disease: MASS II trial. *Circulation*. 2012;126:S158–S163.

37. Deligonul U, Vandormael MG, Kern MJ, Zelman R, Galan K, Chaitman BR. Coronary angioplasty: a therapeutic option for symptomatic patients with two and three vessel coronary disease. *J Am Coll Cardiol*. 1988;11:1173–1179.

38. Hannan EL, Wu C, Walford G, Holmes DR, Jones RH, Sharma S, King SB III. Incomplete revascularization in the era of drug-eluting stents: impact on adverse outcomes. *JACC Cardiovasc Interv*. 2009;2:17–25.

39. Kim YH, Park DW, Lee JY, Kim WJ, Yun SC, Ahn JM, Song HG, Oh JH, Park JS, Kang SJ, Lee SW, Lee CW, Park SW, Park SJ. Impact of angiographic complete revascularization after drug-eluting stent implantation or coronary artery bypass graft surgery for multivessel coronary artery disease. *Circulation*. 2011;123:2373–2381.

40. Kip KE, Bourassa MG, Jacobs AK, Schwartz L, Feit F, Alderman EL, Weiner BH, Weiss MB, Kellett MA Jr, Sharaf BL, Dimas AP, Jones RH, Sopko G, Detre KM. Influence of pre-PTCA strategy and initial PTCA result in patients with multivessel disease: the Bypass Angioplasty Revascularization Investigation (BARI). *Circulation*. 1999;100:910–917.

41. Kloeter UC, Jander NG, Buser PT, Osswald S, Mueller-Brand J, Pfisterer ME. Long-term outcome of angioplasty for multivessel coronary disease: importance and price of complete revascularization. *Int J Cardiol*. 2001;79:197–205.

42. Nikolsky E, Gruberg L, Patil CV, Roguin A, Kepeliovich M, Petcherski S, Boulos M, Grenadier E, Amikam S, Linn S, Markiewicz W, Beyar R. Percutaneous coronary interventions in diabetic patients: is complete revascularization important? *J Invasive Cardiol*. 2004;16:102–106.

43. Norwa-Otto B, Kadziela J, Malek LA, Debski A, Witkowski A, Demkow M, Ruzyllo W. Functionally driven complete vs incomplete revascularisation in multivessel coronary artery disease—long-term results from a large cohort. *Kardiol Pol*. 2010;68:1344–1350.

44. Sarno G, Garg S, Onuma Y, Gutierrez-Chico JL, van den Brand MJ, Rensing BJ, Morel MA, Serruys PW. Impact of completeness of revascularization on the five-year outcome in percutaneous coronary intervention and coronary artery bypass graft patients (from the ARTS-II study). *Am J Cardiol*. 2010;106:1369–1375.

45. Song YB, Lee SY, Hahn JY, Choi SH, Choi JH, Lee SH, Hong KP, Park JE, Gwon HC. Complete versus incomplete revascularization for treatment of multivessel coronary artery disease in the drug-eluting stent era. *Heart Vessels*. 2012;27:433–442.

46. Srinivas VS, Selzer F, Wilensky RL, Holmes DR, Cohen HA, Monrad ES, Jacobs AK, Kelsey SF, Williams DO, Kip KE. Completeness of revascularization for multivessel coronary artery disease and its effect on one-year outcome: a report from the NHLBI Dynamic Registry. *J Interv Cardiol*. 2007;20:373–380.

47. Tamburino C, Angiolillo DJ, Capranzano P, Dimopoulos K, La Manna A, Barbaquillo R, Tagliareni F, Magiafico S, Guzman LA, Galassi AR, Bass TA. Complete versus incomplete revascularization in patients with multivessel disease undergoing percutaneous coronary intervention with drug-eluting stents. *Catheter Cardiovasc Interv*. 2008;72:448–456.

48. Valenti R, Migliorini A, Signorini U, Vergara R, Parodi G, Carrabba N, Cerisano G, Antoniucci D. Impact of complete revascularization with percutaneous coronary intervention on survival in patients with at least one chronic total occlusion. *Eur Heart J*. 2008;29:2336–2342.

49. Yang HH, Chen Y, Gao CY. The influence of complete coronary revascularization on long-term outcomes in patients with multivessel coronary heart disease undergoing successful percutaneous coronary intervention. *J Int Med Res*. 2010;38:1106–1112.

50. George S, Cockburn J, Clayton TC, Ludman P, Cotton J, Spratt J, Redwood S, de Belder M, de Belder A, Hill J, Hove A, Palmer N, Rathore S, Gershlick A, Di Mario C, Hildick-Smith D. Long-term follow-up of elective chronic total coronary occlusion angioplasty: analysis from the U.K. Central Cardiac Audit Database. *J Am Coll Cardiol*. 2014;64:235–243.

51. Hannan EL, Zhong Y, Jacobs AK, Stamato NJ, Berger PB, Walford G, Sharma S, Venditti FJ, King SB III. Patients with chronic total occlusions undergoing percutaneous coronary interventions: characteristics, success, and outcomes. *Circ Cardiovasc Interv*. 2016;9:e003586.

52. Danzi GB, Valenti R, Migliorini A, Parodi G, Vergara R, Antoniucci D. Percutaneous coronary intervention for multiple chronic total occlusions. *Am J Cardiol*. 2013;112:1849–1853.

53. Chang M, Ahn JM, Kim N, Lee PH, Roh JH, Yoon SH, Kang SJ, Lee SW, Kim YH, Lee CW, Park SW, Park DW, Park SJ. Complete versus incomplete revascularization in patients with multivessel coronary artery disease treated with drug-eluting stents. *Am Heart J*. 2016;179:157–165.

54. Villablanca PA, Briceno DF, Massera D, Hlinomaz O, Lombardo M, Bortnick AE, Menegus MA, Pyo RT, Garcia MJ, Mookadam F, Ramakrishna H, Wiley J, Faggioni M, Dangas GD. Culprit-lesion only versus complete multivessel percutaneous intervention in ST-elevation myocardial infarction: a systematic review and meta-analysis of randomized trials. *Int J Cardiol*. 2016;220:251–259.

55. Spencer FA, Sekercioglu N, Prasad M, Lopes LC, Guyatt GH. Culprit vessel versus immediate complete revascularization in patients with ST-segment myocardial infarction—a systematic review. *Am Heart J*. 2015;170:1133–1139.

56. Song YJ, Shin HC, Yang JI, Lee HY, Jin HY, Seo JS, Yang TH, Kim DK, Kim DS, Jang JS. Preventive versus culprit-only percutaneous coronary intervention in ST-elevation myocardial infarction patients with multivessel disease: a meta-analysis. *J Interv Cardiol*. 2015;28:1–13.

57. Sethi A, Bahekar A, Bhuriya R, Singh S, Ahmed A, Khosla S. Complete versus culprit only revascularization in acute ST elevation myocardial infarction: a meta-analysis. *Catheter Cardiovasc Interv*. 2011;77:163–170.

58. Sekercioglu N, Spencer FA, Lopes LC, Guyatt GH. Culprit vessel only vs immediate complete revascularization in patients with acute ST-segment elevation myocardial infarction: systematic review and meta-analysis. *Clin Cardiol*. 2014;37:765–772.

59. Sardar P, Chatterjee S, Giri J, Alfonso F, Helmy T, Ledley GS, Magalhaes MA, Mukherjee D, Waksman R. Intervention strategies for multi-vessel disease in patients with ST-segment elevation myocardial infarction: a meta-analysis of randomized trials. *Int J Cardiol*. 2015;179:225–227.

60. Navarese EP, De Servi S, Buffon A, Suryapranata H, De Luca G. Clinical impact of simultaneous complete revascularization vs. culprit only primary angioplasty in patients with ST-elevation myocardial infarction and multivessel disease: a meta-analysis. *J Thromb Thrombolysis*. 2011;31:217–225.

61. Moretti C, D’Ascenzo F, Quadri G, Omede P, Montefusco A, Taha S, Cerrato C, Chen SL, Biondi-Zoccai G, Gaita F. Management of multivessel coronary disease in STEMI patients: a systematic review and meta-analysis. *Int J Cardiol*. 2015;179:552–557.

62. Lu C, Huang H, Li J, Zhao J, Zhang Q, Zeng Z, Chen Y. Complete versus culprit-only revascularization during primary percutaneous coronary intervention in ST-elevation myocardial infarction patients with multivessel disease: a meta-analysis. *Kaohsiung J Med Sci*. 2013;29:140–149.

63. Kowalewski M, Schulze V, Berti S, Waksman R, Kubica J, Kolodziejczak M, Buffon A, Suryapranata H, Burbel PA, Kelm M, Pawliszak W, Anisimowicz L, Navarese EP. Complete revascularisation in ST-elevation myocardial infarction and multivessel disease: meta-analysis of randomised controlled trials. *Heart*. 2015;101:1309–1317.

64. Bainey KR, Welsh RC, Toklu B, Bangalore S. Complete vs culprit-only percutaneous coronary intervention in STEMI with multivessel disease: a meta-analysis and trial sequential analysis of randomized trials. *Can J Cardiol*. 2016;32:1542–1551.

65. Bainey KR, Mehta SR, Lai T, Welsh RC. Complete vs culprit-only revascularization for patients with multivessel disease undergoing primary percutaneous coronary intervention for ST-segment elevation myocardial infarction: a systematic review and meta-analysis. *Am Heart J*. 2014;167:1–14.e2.

66. Anantha Narayanan M, Reddy YN, Sundaram V, Reddy YN, Baskaran J, Agnihotri K, Badheka A, Patel N, Deshmukh A. What is the optimal approach to a non-culprit stenosis after ST-elevation myocardial infarction—conservative therapy or upfront revascularization? An updated meta-analysis of randomized trials. *Int J Cardiol*. 2016;216:18–24.

67. Di Mario C, Sansa M, Airoldi F, Shaiban I, Manari A, Patronio A, Piccaluga E, De Servi S, Ramondo A, Colusso S, Formosa A, Cernigliaro C, Colombo A, Monzini N, Bonardi MA. Single vs multivessel treatment during primary angioplasty: results of the multicentre randomised HEpacoat for cuLPrit or multivessel stenting for Acute Myocardial Infarction (HELP AMI) Study. *Int J Cardiovasc Intervent*. 2004;6:128–133.

68. Ghani A, Dambrink JH, van ’t Hof AW, Ottervanger JP, Gosselink AT, Hoorntje JC. Treatment of non-culprit lesions detected during primary PCI: long-term follow-up of a randomised clinical trial. *Neth Heart J*. 2012;20:347–353.

69. Ochala A, Smolka GA, Wojakowski W, Dudek D, Dziewierz A, Krolkowski Z, Gasior Z, Tendera M. The function of the left ventricle after complete multivessel one-stage percutaneous coronary intervention in patients with acute myocardial infarction. *J Invasive Cardiol*. 2004;16:699–702.

70. Politi L, Sgura F, Rossi R, Monopoli D, Guerri E, Leuzzi C, Bursi F, Sangiorgi GM, Modena MG. A randomised trial of target-vessel versus multi-vessel revascularisation in ST-elevation myocardial infarction: major adverse cardiac events during long-term follow-up. *Heart*. 2010;96:662–667.

71. Mariani G, De Servi S, Dellavalle A, Repetto S, Chierchia S, D’Urbano M, Repetto A, Klersy C. Complete or incomplete percutaneous coronary revascularization in patients with unstable angina in stent era: are early and one-year results different? *Catheter Cardiovasc Interv*. 2001;54:448–453.

72. Head SJ, Mack MJ, Holmes DR Jr, Mohr FW, Morice MC, Serruys PW, Kappetein AP. Incidence, predictors and outcomes of incomplete revascularization after percutaneous coronary intervention and coronary artery bypass grafting: a subgroup analysis of 3-year SYNTAX data. *Eur J Cardiothorac Surg.* 2012;41:535–541.
73. Farooq V, Serruys PW, Bourantas CV, Zhang Y, Muramatsu T, Feldman T, Holmes DR, Mack M, Morice MC, Stähle E, Colombo A, de Vries T, Morel MA, Dawkins KD, Kappetein AP, Mohr FW. Quantification of incomplete revascularization and its association with five-year mortality in the synergy between percutaneous coronary intervention with taxus and cardiac surgery (SYNTAX) trial validation of the residual SYNTAX score. *Circulation.* 2013;128:141–151.
74. Sarathy K, Nagaraja V, Kapur A, Szirt R, Raval J, Eslick GD, Burgess D, Denniss AR. Target-vessel versus multivessel revascularisation in ST-elevation myocardial infarction: a meta-analysis of randomised trials. *Heart Lung Circ.* 2015;24:327–334.
75. Dahal K, Rijal J, Panta R, Lee J, Azrin M, Lootens R. Multi-vessel versus culprit-vessel and staged percutaneous coronary intervention in STEMI patients with multivessel disease: a meta-analysis of randomized controlled trials. *Cardiovasc Revasc Med.* 2014;15:408–413.
76. El-Hayek GE, Gershlick AH, Hong MK, Casso Deominquez A, Banning A, Afshar AE, Herzoq E, Tamis-Holland JE. Meta-analysis of randomized controlled trials comparing multivessel versus culprit-only revascularization for patients with ST-segment elevation myocardial infarction and multivessel disease undergoing primary percutaneous coronary intervention. *Am J Cardiol.* 2015;115:1481–1486.
77. Tonino PAL, De Bruyne B, Pijls NH, Siebert U, Ikeno F, van't Veer M, Klauss V, Manoraran G, Engstrom T, Oldroyd KG, Ver Lee PN, MacCarthy PA, Fearon WF. Fractional flow reserve versus angiography for guiding percutaneous coronary intervention. *N Engl J Med.* 2009;360:213–224.
78. Pijls NH, Fearon WF, Tonino PA, Siebert U, Ikeno F, Bornschein B, van't Veer M, Klauss V, Manoharan G, Engstrom T, Oldroyd KG, Ver Lee PN, MacCarthy PA, De Bruyne B. Fractional flow reserve versus angiography for guiding percutaneous coronary intervention in patients with multivessel coronary artery disease: 2-year follow-up of the FAME (Fractional Flow Reserve Versus Angiography for Multivessel Evaluation) study. *J Am Coll Cardiol.* 2010;56:177–184.
79. Mahmud E. Chronic total occlusion revascularization: Achilles' heel or golden opportunity for PCI? *J Am Coll Cardiol.* 2014;64:244–246.
80. Khan MF, Wendel CS, Thai HM, Movahed MR. Effects of percutaneous revascularization of chronic total occlusions on clinical outcomes: a meta-analysis comparing successful versus failed percutaneous intervention for chronic total occlusion. *Catheter Cardiovasc Interv.* 2013;82:95–107.
81. Joyal D, Afilalo J, Rinfret S. Effectiveness of recanalization of chronic total occlusions: a systematic review and meta-analysis. *Am Heart J.* 2010;160:179–187.
82. Desmet W, Willems J, Van Lierde J, Piessens J. Discrepancy between visual estimation and computer-assisted measurement of lesion severity before and after coronary angioplasty. *Cathet Cardiovasc Diagn.* 1994;31:192–198.
83. De Bruyne B, Pijls NH, Kalesan B, Barbato E, Tonino PA, Piroth Z, Jagic N, Möbius-Winkler S, Rioufol G, Witt N, Kala P, MacCarthy P, Engström T, Oldroyd KG, Mavromatis K, Manoharan G, Verlee P, Frobert O, Curzen N, Johnson JB, Jüni P, Fearon WF. Fractional flow reserve-guided PCI for stable coronary artery disease. *N Engl J Med.* 2014;371:1208–1217.
84. De Bruyne B, Pijls NH, Kalesan B, Barbato E, Tonino PA, Piroth Z, Jagic N, Möbius-Winkler S, Rioufol G, Witt N, Kala P, MacCarthy P, Engström T, Oldroyd KG, Mavromatis K, Manoharan G, Verlee P, Frobert O, Curzen N, Johnson JB, Jüni P, Fearon WF. Fractional flow reserve-guided PCI versus medical therapy in stable coronary disease. *N Engl J Med.* 2012;367:991–1001.
85. Pijls NH, van Schaardenburgh P, Manoharan G, Boersma E, Bech JW, van't Veer M, Bar F, Hoorntje J, Koolen J, Wijns W, de Bruyne B. Percutaneous coronary intervention of functionally nonsignificant stenosis: 5-year follow-up of the DEFER Study. *J Am Coll Cardiol.* 2007;49:2105–2111.
86. Authors/Task Force members, Windecker S, Kolh P, Alfonso F, Collet JP, Cremer J, Falk V, Filippatos G, Hamm C, Head SJ, Jüni P, Kappetein AP, Kastrati A, Knuuti J, Landmesser U, Laufer G, Neumann FJ, Richter DJ, Schauerte P, Sousa Uva M, Stefanini GG, Taggart DP, Torracca L, Valgimigli M, Wijns W, Witkowski A. 2014 ESC/EACTS guidelines on myocardial revascularization: the Task Force on Myocardial Revascularization of the European Society of Cardiology (ESC) and the European Association for Cardio-Thoracic Surgery (EACTS). Developed with the special contribution of the European Association of Percutaneous Cardiovascular Interventions (EAPCI). *Eur Heart J.* 2014;35:2541–2619.



## **Impact of Incomplete Percutaneous Revascularization in Patients With Multivessel Coronary Artery Disease: A Systematic Review and Meta-Analysis**

Vinayak Nagaraja, Sze-Yuan Ooi, James Nolan, Adrian Large, Mark De Belder, Peter Ludman, Rodrigo Bagur, Nick Curzen, Takashi Matsukage, Fuminobu Yoshimachi, Chun Shing Kwok, Colin Berry and Mamas A. Mamas

*J Am Heart Assoc.* 2016;5:e004598; originally published December 16, 2016;  
doi: 10.1161/JAHA.116.004598

The *Journal of the American Heart Association* is published by the American Heart Association, 7272 Greenville Avenue, Dallas, TX 75231  
Online ISSN: 2047-9980

The online version of this article, along with updated information and services, is located on the World Wide Web at:

<http://jaha.ahajournals.org/content/5/12/e004598>

Subscriptions, Permissions, and Reprints: The *Journal of the American Heart Association* is an online only Open Access publication. Visit the Journal at <http://jaha.ahajournals.org> for more information.