

**Glacial geomorphology of the northern Kivalliq region,  
Nunavut, Canada, with an emphasis on meltwater drainage  
systems**

STORRAR, Robert and LIVINGSTONE, Stephen

Available from Sheffield Hallam University Research Archive (SHURA) at:

<http://shura.shu.ac.uk/14169/>

---

This document is the author deposited version. You are advised to consult the publisher's version if you wish to cite from it.

**Published version**

STORRAR, Robert and LIVINGSTONE, Stephen (2017). Glacial geomorphology of the northern Kivalliq region, Nunavut, Canada, with an emphasis on meltwater drainage systems. *Journal of Maps*, 13 (2), 153-164.

---

**Repository use policy**

Copyright © and Moral Rights for the papers on this site are retained by the individual authors and/or other copyright owners. Users may download and/or print one copy of any article(s) in SHURA to facilitate their private study or for non-commercial research. You may not engage in further distribution of the material or use it for any profit-making activities or any commercial gain.



## Glacial geomorphology of the northern Kivalliq region, Nunavut, Canada, with an emphasis on meltwater drainage systems

Robert D. Storrar & Stephen J. Livingstone

To cite this article: Robert D. Storrar & Stephen J. Livingstone (2017) Glacial geomorphology of the northern Kivalliq region, Nunavut, Canada, with an emphasis on meltwater drainage systems, Journal of Maps, 13:2, 153-164, DOI: [10.1080/17445647.2017.1279081](https://doi.org/10.1080/17445647.2017.1279081)

To link to this article: <http://dx.doi.org/10.1080/17445647.2017.1279081>



© 2017 The Author(s). Published by Informa UK Limited, trading as Taylor & Francis Group



[View supplementary material](#)



Published online: 24 Jan 2017.



[Submit your article to this journal](#)



[View related articles](#)



[View Crossmark data](#)



## Glacial geomorphology of the northern Kivalliq region, Nunavut, Canada, with an emphasis on meltwater drainage systems

Robert D. Storrar <sup>a</sup> and Stephen J. Livingstone <sup>b</sup>

<sup>a</sup>Department of the Natural and Built Environment, Sheffield Hallam University, Sheffield, UK; <sup>b</sup>Department of Geography, University of Sheffield, Sheffield, UK

### ABSTRACT

This paper presents a glacial geomorphological map of glacial lineations, ribbed terrain, moraines, meltwater channels (subglacial and ice-marginal/proglacial), eskers, glaciofluvial deposits, ice-contact outwash fans and deltas and abandoned shorelines on the bed of the former Laurentide Ice Sheet in northern Canada. Mapping was compiled from satellite imagery and digital elevation data and landforms were digitised directly into a Geographical Information System. The map reveals a complex glacial history characterised by multiple ice-flow events, including fast-flowing ice streams. Moraines record a series of pauses or readvances during overall SE retreat towards the Keewatin Ice Divide. The distribution of subglacial meltwater landforms indicates that several distinctive scales and modes of drainage system operated beneath the retreating ice sheet. This includes a large (>100 km) integrated network of meltwater channels, eskers, ice-contact outwash fans and deltas and glaciofluvial deposits that originates at the northern edge of Aberdeen Lake. The map comprises zone 66 of the Canadian National Topographic System, which encompasses an area of 160,000 km<sup>2</sup>. It is presented at a scale of 1:500,000 and is designed to be printed at A0 size.

### ARTICLE HISTORY

Received 1 April 2016  
Revised 24 October 2016  
Accepted 23 November 2016

### KEYWORDS

Laurentide Ice Sheet; glacial geomorphology; meltwater channels; Canada

## 1. Introduction

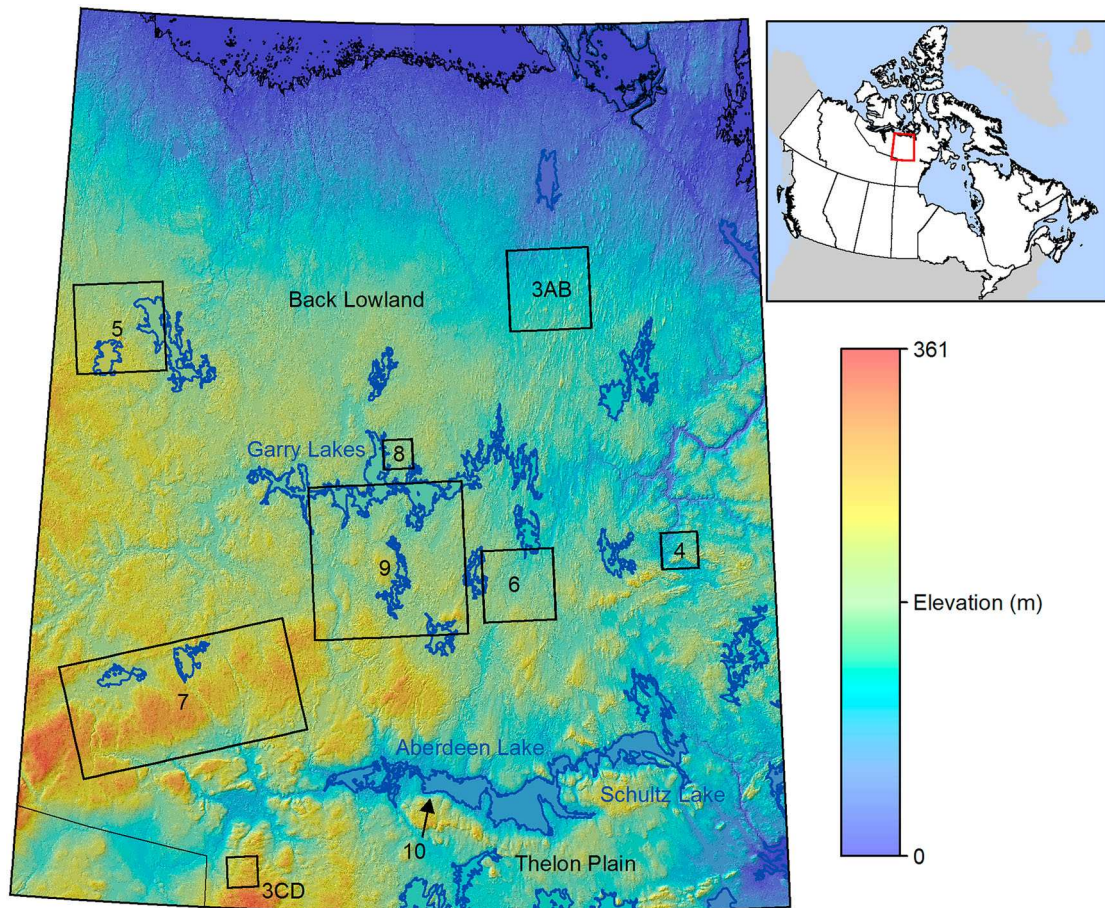
The Laurentide Ice Sheet covered a substantial proportion of North America during the Late Wisconsinan glaciation (Dyke et al., 2002) and its subsequent demise was closely coupled to dramatic climatic changes (e.g. Barber et al., 1999; Clark, 1994; Clark, Alley, & Pollard, 1999). Understanding the fluctuations of ice sheets and the processes which take place beneath them, and how they interact with climate, is important for predicting how ice sheets will respond to contemporary climate change. High resolution climatic records extending over the last glacial cycle (and beyond) are widely available (e.g. Shakun et al., 2012), providing a wealth of data which can be compared with the palaeo-ice sheet record. Previous reconstructions have focused principally on ice-margin fluctuations (e.g. Dyke & Prest, 1987; Dyke, Moore, & Robertson, 2003) and the activity of ice streams (e.g. De Angelis & Kleman, 2005; Margold, Stokes, & Clark, 2015; Ó Cofaigh, Evans, & Smith, 2010; Ross, Campbell, Parent, & Adams, 2009; Stokes & Clark, 2001; Stokes, Clark, & Storrar, 2009; Stokes, Margold, Clark, & Tarasov, 2016), which rapidly drain large portions of ice sheets.

Recent work on contemporary ice sheets has drawn attention to the importance of meltwater in controlling ice dynamics (e.g. Bartholomew et al., 2010; Schoof, 2010; Zwally et al., 2002). However, whilst meltwater

was abundant during the deglaciation of the Laurentide Ice Sheet (e.g. Carlson et al., 2009; Storrar, Stokes, & Evans, 2014a) and produced a large geomorphological imprint (e.g. Brennand, 2000; Brennand & Shaw, 1994; Mullins & Hinchey, 1989; Prest, Grant, & Rampton, 1968; Storrar, Stokes, & Evans, 2013), the geomorphological record of meltwater has to date played only a relatively minor role in ice sheet reconstructions. This is typically limited to providing supplementary information about ice geometries and flow direction (Kleman & Borgström, 1996), rather than to reconstruct basal and hydrological processes in space and time (see review by Greenwood, Clason, Helanow, & Margold, 2016). The long-term effect is that the role of meltwater in governing or modulating ice sheet dynamics is relatively underexplored (although see Stokes, Tarasov, & Dyke, 2012; Tarasov & Peltier, 2004, 2006). This paper aims to provide the geomorphological mapping basis for a first attempt to incorporate meltwater landforms into a larger ice dynamic reconstruction, using a study area in northern Canada.

## 2. Study area and previous mapping

The study area corresponds to zone 66 of the Canadian National Topographic System (NTS) and extends from the 64th to 68th parallels and from the 96th to 104th

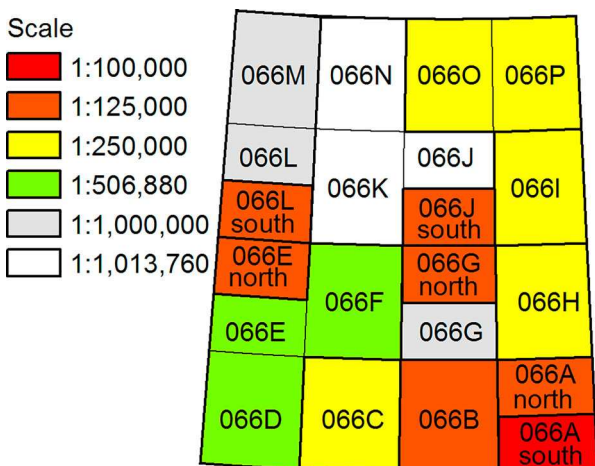


**Figure 1.** Location and topography of the study area. Locations of the landform examples provided in subsequent figures are indicated by boxes and the numbers refer to the associated figure number. Lakes greater than 100 km<sup>2</sup> are shown with blue outlines.

meridians, encompassing an area of approximately 160,000 km<sup>2</sup> (Figure 1). Despite its large size, the study area is predominantly within the relatively flat Back Lowland and Thelon Plain (Dyke & Dredge, 1989), with a maximum elevation of 361 m a.s.l. Queen Maud Gulf lies to the north and the area contains myriad small lakes and several larger lakes, including Aberdeen Lake (1106 km<sup>2</sup>), Schultz Lake (410 km<sup>2</sup>) and the Garry Lakes (776 km<sup>2</sup>). The area

lies on the Precambrian Shield and is composed mainly of granitoid rocks, with belts of greenstone and metamorphosed sediments in the north and sedimentary basins in the south (Wheeler et al., 1996).

Early mapping of areas like, and including, zone 66 (e.g. Craig, 1961, 1964) by the Geological Survey of Canada (GSC) resulted in the publication of the *Glacial Map of Canada* (Prest et al., 1968), which shows the generalised glacial geomorphology. Since the 1980s, the GSC have produced several more detailed surficial geology map sheets covering subsets of the area at scales ranging from 1:100,000 to 1:1,000,000, the spatial distribution of which is shown in Figure 2 (Aylsworth, 1990; Aylsworth & Clarke, 1989; Aylsworth & Shilts, 1989a; Aylsworth, Cunningham, & Shilts, 1990; Helie, 1984; McMartin, Dredge, & Aylsworth, 2008; McMartin, Dredge, & Robertson, 2005; St-Onge & Kerr, 2013, 2014a, 2014b; 2015; Thomas, 1981a, 1981b). This mapping is based on the interpretation of aerial photographs and field observations and contains different collections of landforms, depending on the mapper. A summary of the landforms recorded on each map is provided in Table 1. Whilst some landforms, such as eskers, are presented in a high level of detail, others, notably glacial lineations, are necessarily generalised and individual bedforms are often not mapped. Moreover, Figure 2 shows that several portions of the study



**Figure 2.** Extent of previous surficial geology maps at various scales in NTS zone 66.

**Table 1.** Features mapped in previous studies.

NTS zone	Reference	Scale	Lineations (including flutings & drumlins)	Crag and tails (including roches moutonnées)	Striae	Ribbed moraine	De Geer moraine	Hummocky moraine	Esker	Meltwater channel	Marine limit	Lacustrine limit	Shorelines (including beaches)	Moraine ridge	Lateral moraine	Delta	Ice-contact delta	Ice-contact face	Glaciofluvial terrace scarp
066A	Aylsworth et al. (1990)	1:125,000	✓	✓	✓	✓	✓	✓	✓	✓	✓		✓	✓					
066A	McMartin et al. (2005)	1:250,000	✓	✓	✓	✓		✓	✓					✓					
066A south	McMartin et al. (2008)	1:100,000	✓	✓	✓	✓		✓		✓	✓		✓						
066B	Aylsworth (1990)	1:125,000	✓	✓	✓	✓	✓	✓	✓	✓	✓	✓	✓	✓					
066C	Aylsworth and Clarke (1989)	1:250,000	✓	✓	✓	✓	✓	✓	✓	✓	✓		✓	✓					
066E	St-Onge and Kerr (2013)	1:125,000	✓	✓	✓				✓				✓	✓				✓	✓
066G north	St-Onge and Kerr (2015)	1:125,000	✓	✓	✓				✓	✓			✓	✓					
066I	Thomas (1981a)	1:250,000	✓	✓	✓				✓	✓	✓		✓	✓	✓	✓	✓	✓	
066H	Thomas (1981b)	1:250,000	✓	✓	✓				✓	✓	✓		✓	✓	✓	✓	✓	✓	
066J south	St-Onge and Kerr (2014b)	1:125,000	✓	✓	✓				✓	✓	✓		✓	✓					
066L	St-Onge and Kerr (2014a)	1:125,000	✓	✓	✓				✓	✓			✓	✓				✓	✓
066C,D, E,F	Craig (1964)	1:506,880	✓	✓	✓				✓	✓			✓	✓		✓			
066O,P	Helie (1984)	1:250,000	✓	✓	✓		✓		✓				✓	✓		✓			
066I,J,K, N,O,P	Craig (1961)	1:1,013,760	✓	✓	✓				✓		✓			✓					
066 (all)	Aylsworth and Shilts (1989a)	1:1,000,000	✓	✓		✓		✓	✓					✓					

area are restricted to mapping at small scales of 1:500,000 or 1:1,000,000. De Angelis (2007) produced a map of the glacial geomorphology of the east-central Canadian Arctic, which is based predominantly on the interpretation of Landsat Enhanced Thematic Mapper (ETM+) imagery. This map portrays glacial landforms required for a glacial inversion model (Kleman et al., 2007). Like the Glacial Map of Canada (Prest et al., 1968), some features (e.g. glacial lineations) are displayed in a generalised pattern, rather than each individual landform being mapped. The focus of previous mapping has been predominantly on ice sheet dynamics, with the result that important meltwater features, including meltwater channels, have not previously been mapped in this region. Further mapping is therefore required to provide a higher level of detail for reconstructions, and to interpret the meltwater history of this part of the Laurentide Ice Sheet as it deglaciated.

### 3. A brief glacial history

The study area is likely to have been ice covered for much of the last glacial cycle (Stokes et al., 2012) and the landform record attests to three distinctive signatures of ice sheet history.

First, prior to deglaciation the study area was located in a core region of the Keewatin sector of the Laurentide Ice Sheet, and acted as a centre of ice dispersal (Dyke et al., 2002; McMartin & Henderson, 2004). A series of ice divides developed over the area, which reconfigured over time, having a dramatic influence on ice-flow direction as recorded by cross-cutting glacial lineations and striae (Boulton & Clark, 1990; Hodder, Ross, & Menzies, 2016; McMartin & Henderson, 2004).

Second, the Dubawnt Lake Ice Stream flowed across the southern part of the area towards the NW/WNW, during deglaciation from approximately 10.2 to 9 ka, producing numerous mega-scale glacial lineations (MSGs) (Stokes & Clark, 2003a, 2003b). It has also been suggested that, prior to deglaciation, another ice stream operated in the northern and central parts of the area, which flowed to the north-east and fed the Gulf of Boothia Ice Stream (Hodder et al., 2016).

Third, the final deglaciation of the area occurred between ca. 10 and 8 ka (Dyke et al., 2003), as ice retreated to the east-south-east towards the final location of the Keewatin Ice Divide (McMartin & Henderson, 2004). The deglacial signature is characterised by prominent moraines and eskers (Aylsworth & Shilts, 1989a, 1989b; Prest et al., 1968).

### 4. Methods and data sources

Glacial landforms were identified from satellite imagery and digital elevation data and were digitised

directly into a Geographical Information System (GIS). Landsat 7 ETM+ and 8 OLI imagery has a spatial resolution of 30 m (and 15 m in the panchromatic band) and was downloaded from the USGS (available at: [earthexplorer.usgs.gov](http://earthexplorer.usgs.gov)). Individual images were viewed at a variety of scales, typically between 1:50,000 and 1:500,000, as false colour composites in different band combinations: principally 4,3,2 and 7,5,2 (R,G,B). Landforms were digitised at approximately 1:50,000. The 1:50,000 scale Canadian Digital Elevation Dataset (CDED: available from [geogratis.gc.ca](http://geogratis.gc.ca)) was used to produce a Digital Elevation Model (DEM) with a horizontal resolution of 15.5 m. In order to avoid azimuth biasing (Smith & Clark, 2005; Smith & Wise, 2007), the DEM was visualised in three different ways: (i) as two relief-shaded models with different azimuths (315° and 45°); (ii) as a slope gradient-shaded model and (iii) as a simple elevation-shaded model.

Although both sets of imagery were used to identify landforms, some features were more readily identifiable in one particular set. For example, low relief corridors of glaciofluvial deposits were identifiable only by their distinctive spectral signature in the Landsat ETM+ imagery. In contrast, meltwater channels are characterised by a topographic signature and were typically easier to identify in the CDED data. All mapping was cross-checked with previous investigations (see Table 1) to ensure consistency.

Glacial lineations, ribbed terrain, esker crestlines, meltwater channel thalwegs, abandoned shorelines and moraine crestlines were digitised as polylines. Glaciofluvial deposits (deposits of sand and/or gravel characterised by high reflectance in Landsat imagery) and ice-contact outwash fans and deltas were digitised as polygons. Lake outlines used on the map were downloaded from the North American Atlas (available from: [nationalatlas.gov](http://nationalatlas.gov)).

Most of the above landforms are clearly distinguishable in different sets of remotely sensed imagery. However, meltwater channels (erosional products of meltwater flow that may range from metre to kilometre scale) are often ambiguous. They may form in subglacial, proglacial or ice-marginal positions and often occupy topographic lows, leading to potential confusion with modern or postglacial drainage. Indeed, postglacial drainage patterns on the Canadian Shield are characteristically deranged as a result of the effect of repeated glaciations on reshaping the surface, with insufficient time for graded fluvial systems to develop (Dyke & Dredge, 1989). Many modern channels therefore occupy former meltwater channels, making them difficult to objectively separate. All potential meltwater channels were therefore mapped and individually assessed to determine whether they formed subglacially, ice-marginally or proglacially (after Greenwood, Clark, & Hughes, 2007). The criteria for distinguishing

subglacial meltwater channels include: (i) an association with other glacial landforms such as moraines and eskers; (ii) an undulating channel thalweg and (iii) an oblique channel orientation relative to the regional drainage slope. Proglacial meltwater channels flow down slope, often start abruptly at former ice-margin positions and meander downstream. Ice-marginal meltwater channels document the ice margin at the time of their formation and are classically related to parallel flights of lateral channels perched on valley sides (e.g. Dyke, 1993; Greenwood et al., 2007; Maag, 1969; Margold, Jansson, Kleman, & Stroeven, 2011).

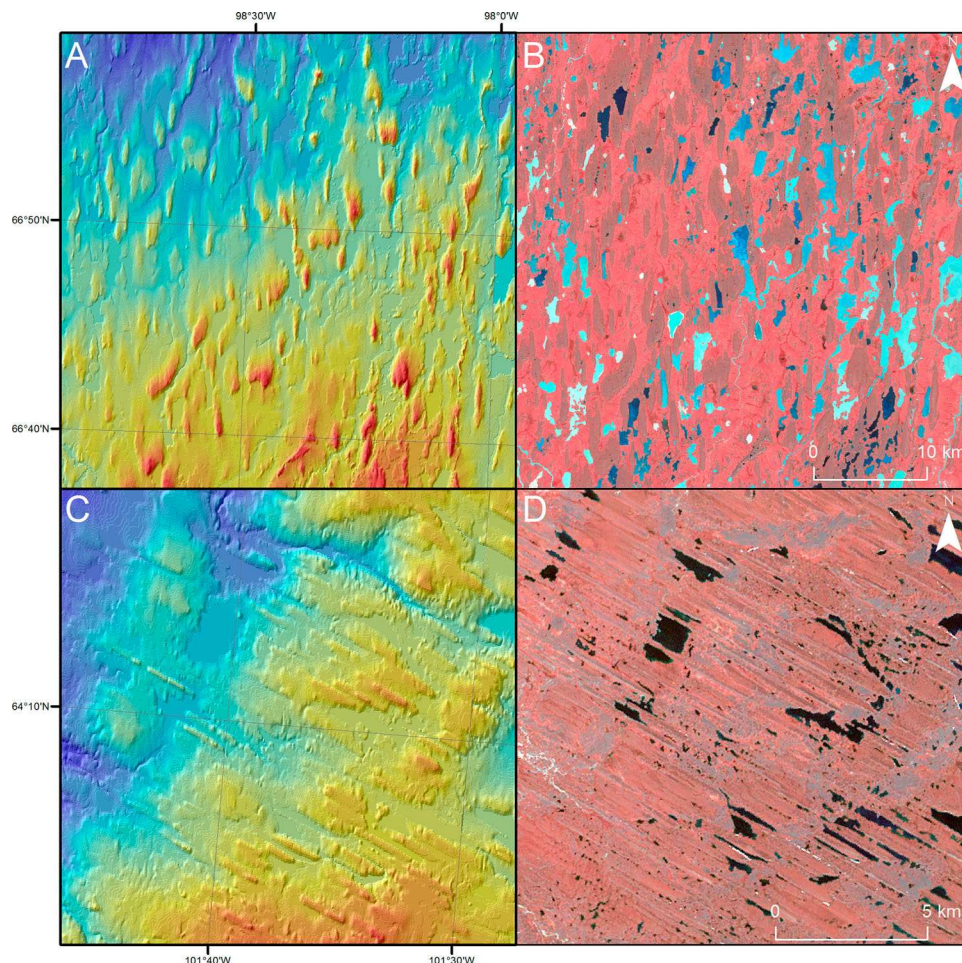
## 5. Mapped landforms

A new map of the glacial geomorphology of NTS zone 66 is presented in the supplementary data (Main Map). The mapping reveals a rich and complex suite of glacial landforms and provides a consistent level of detail across the study area, in places exceeding that of previous work (Figure 2). Eight different types of landform were mapped and these are briefly described below.

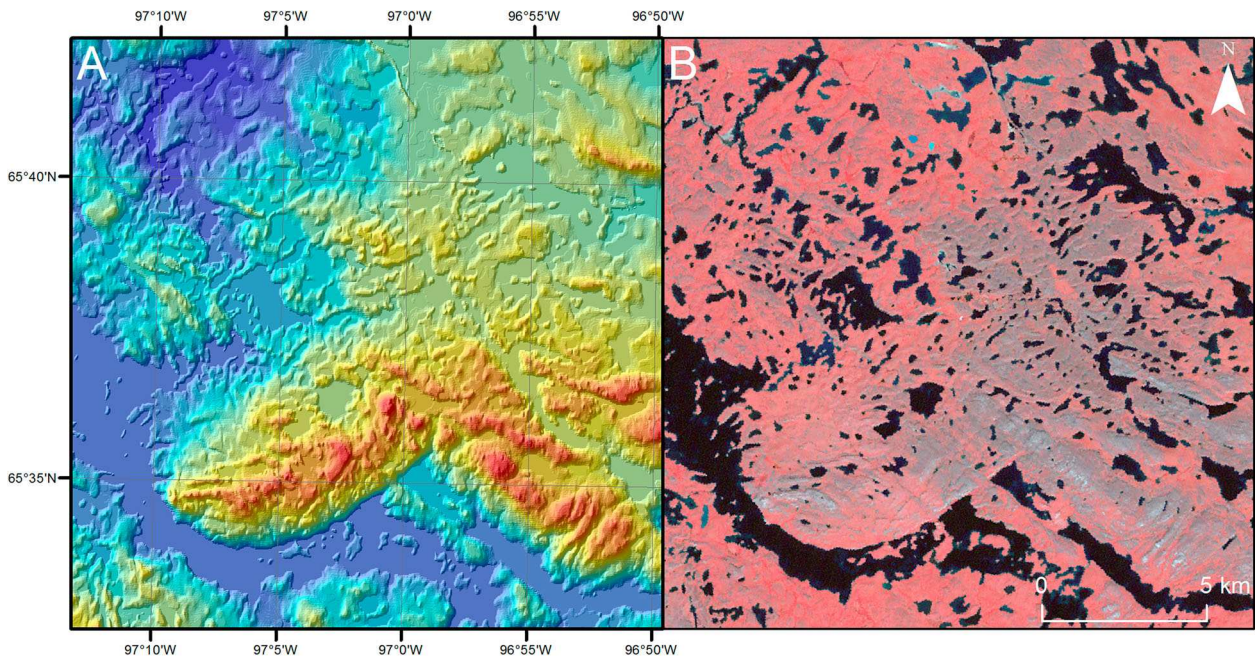
The map contains 28,061 *glacial lineations* (Figure 3), which range in size from relatively small

drumlins (Figure 3(A,B)) a few 10s to 100s of m long, to spectacular MSGLs (Clark, 1993) of the Dubawnt Lake Ice Stream bed (Stokes & Clark, 2003a) that reach up to 23 km long (Figure 3(C,D)). Glacial lineations reflect different ice-flow phases, with principal flows aligned E–W (in the southern part) and S–N (in the east). Smaller lineation clusters depict a complex arrangement of orientations, including cross-cutting, suggesting that ice flow changed direction during the last glacial. Some of the large (10s km long) S–N trending lineations in the south of the study area have previously been identified as ‘mega-scale transverse bedforms’ akin to giant ribbed terrain (Greenwood & Kleman, 2010). These landforms have more recently been interpreted by Hodder et al. (2016) as relict MSGL. This interpretation is supported by parallel striations, which would be difficult to explain if the features formed transverse to ice flow. For this reason we follow Hodder et al. (2016) and classify these features as glacial lineations, though we note some uncertainty in this interpretation.

*Ribbed terrain (moraine)* (Figure 4) are ice-flow-transverse ridges commonly associated with drumlins (Dunlop & Clark, 2006). The terms ‘ribbed’ or ‘Rogen’ moraine have previously been used for these



**Figure 3.** Glacial lineations: drumlins shown in (A) CDED and (B) 4,3,2 R,G,B Landsat ETM+ image; and mega-scale glacial lineations shown in (C) CDED and (D) pan-sharpened 4,3,2 R,G,B Landsat ETM+ image. Locations are given in Figure 1.



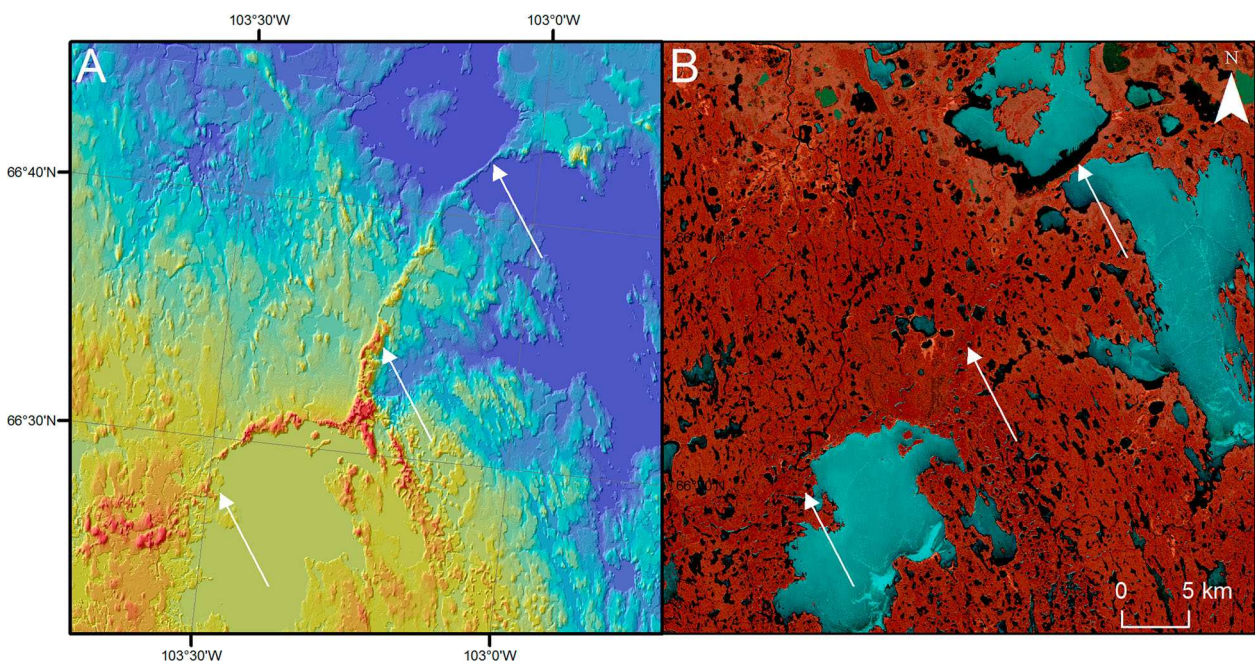
**Figure 4.** Ribbed terrain shown in (A) CDED and (B) Landsat ETM+ (R,G,B 4,3,2) imagery. Location is given in Figure 1.

landforms (Hättestrand, 1997; Hättestrand & Kleman, 1999; Lundqvist, 1989), though they are not true moraines but subglacial bedforms (Dunlop, Clark, & Hindmarsh, 2008; Hättestrand & Kleman, 1999). Areas of ribbed terrain occur preferentially towards the south and south-east, close to the final location of the Keewatin Ice Divide (Aylsworth & Shilts, 1989b).

*Moraine ridges* (Figure 5) demarcate former ice-margin positions. Most of the moraine ridges that were mapped are consistent with deglacial ice margins reflecting the gradual retreat of the ice sheet from the NW to the SE (Dyke et al., 2003; Dyke & Prest,

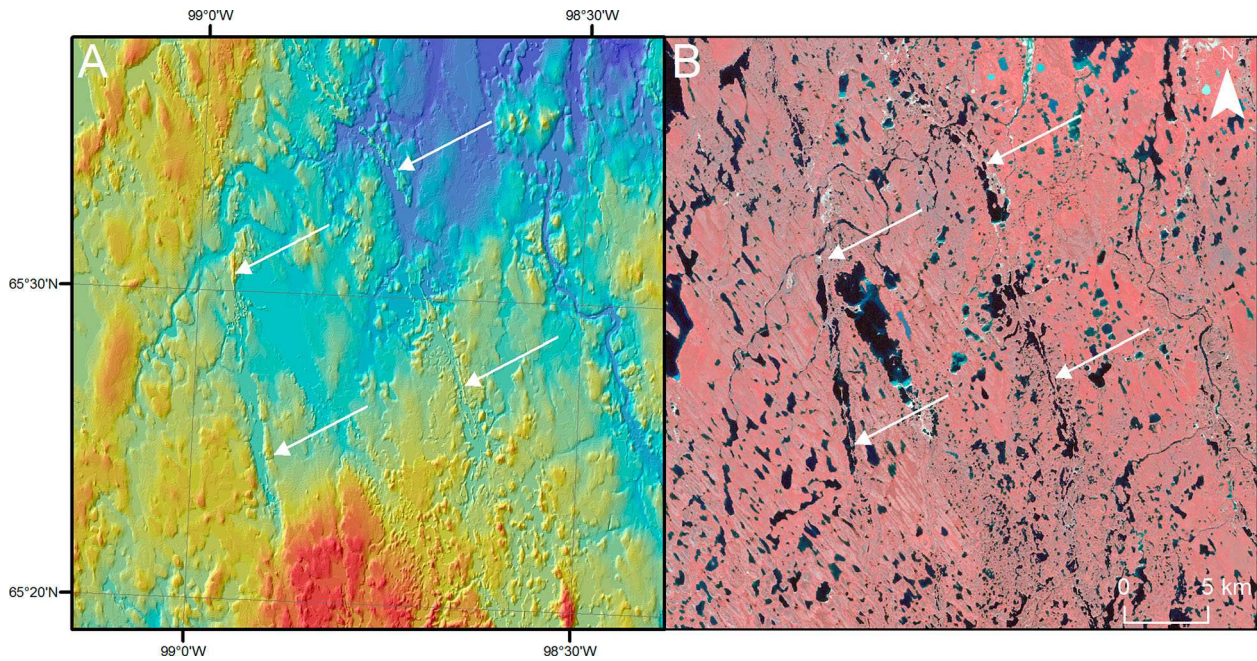
1987). In some locations, several moraine ridges are aligned in close proximity, whereas elsewhere they occur as single isolated ridges.

*Eskers* (Figure 6) are straight-to-sinuuous ridges composed of glaciofluvial sand and gravel, which form by deposition of sediment predominantly in R-channels, which are aligned roughly normal to the ice margin (Brennand, 2000). Numerous eskers were mapped in the area and they record the meltwater drainage pattern and ice-margin positions during final deglaciation over the area, approximately from the NNW to SSE towards the final location of the Keewatin Ice Divide



**Figure 5.** A segment of the MacAlpine moraine (Dyke & Prest, 1987) shown in (A) CDED and (B) Landsat ETM+ (R,G,B 4,3,2) imagery. Location is given in Figure 1.

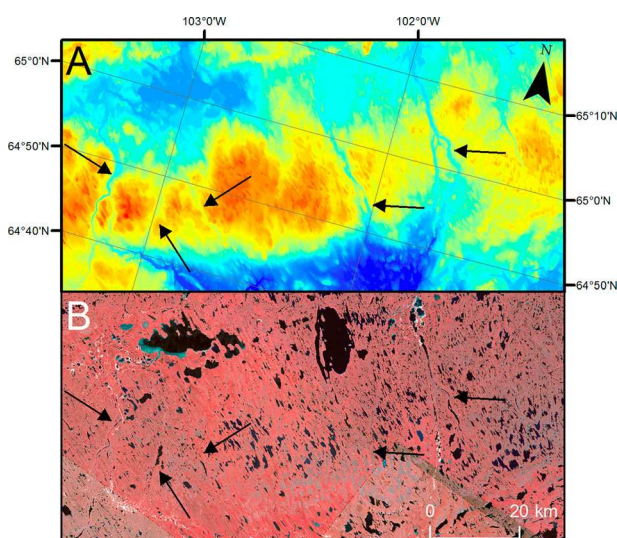




**Figure 6.** Eskers shown in (A) CDED and (B) Landsat ETM+ (R,G,B 4,3,2) imagery. Location is given in Figure 1.

(Aylsworth & Shilts, 1989b). Most eskers are up to 10 km long, although some reach lengths up to 46 km. Eskers are quasi-regularly spaced approximately 12 km apart across the study area (Storrar, Stokes, & Evans, 2014b).

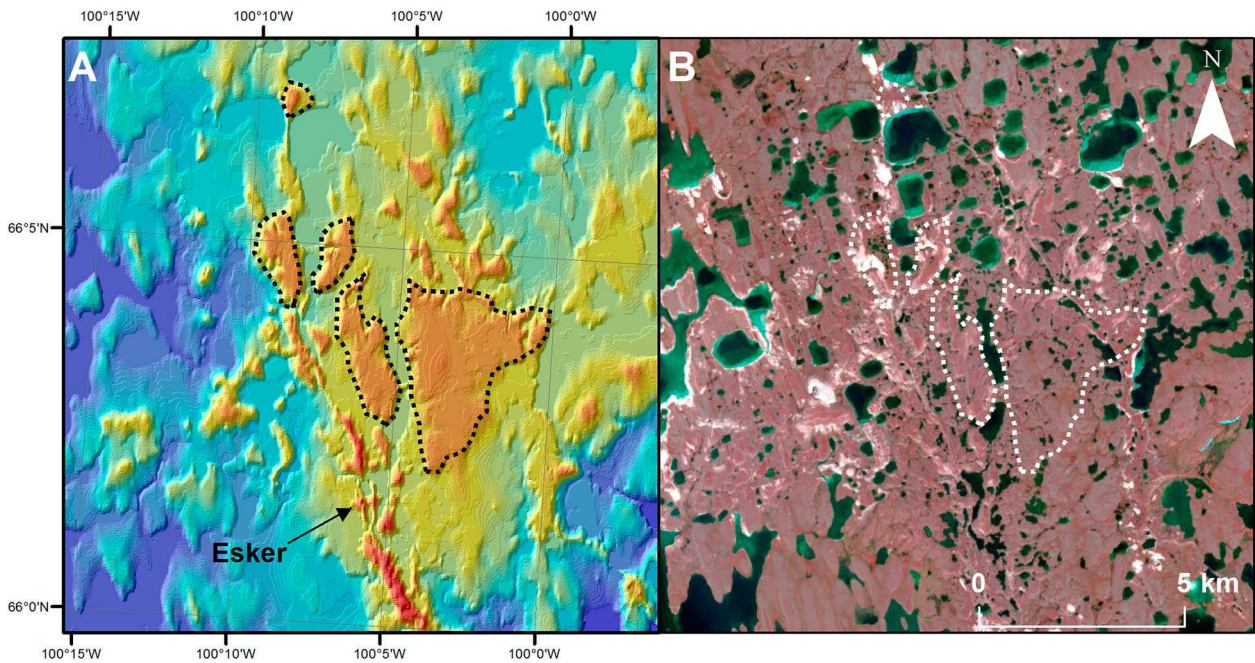
*Meltwater channels* (Figure 7) are up to 102 km long and may be incised into either bedrock or sediment. Of the 404 ‘definite’ and ‘probable’ channels mapped in the study area, 306 were interpreted as being subglacial in origin (76% of the total population) and 98 either proglacial or ice-marginal channels (24% of the total population). Ice-marginal meltwater channels are up to 30 km long and tend to be orientated transverse to glacial lineations and subglacial meltwater products in association with moraine still-stand positions. The



**Figure 7.** Meltwater channels seen in (A) CDED and (B) Landsat ETM+ (R,G,B 4,3,2) imagery. Location is given in Figure 1.

majority of subglacial meltwater channels occur between Aberdeen and Garry lakes along a roughly SE–NW to S–N axis. The channels are up to 1.5 km wide and extend for long distances (up to 100 km), consistent with the dimensions of tunnel valleys (e.g. Kehew, Piotrowski, & Jørgensen, 2012; Livingstone & Clark, 2016; Ó Cofaigh, 1996; Wright, 1973). Many appear to initiate on the northern edge of Aberdeen Lake, whilst a smaller number originate further south and trend through it. Subglacial meltwater channels are often associated with eskers, which either occur within the channels or form a continuation with them, producing integrated drainage networks. In contrast to other locations (e.g. Livingstone & Clark, 2016), about half of the subglacial meltwater channels throughout the study area do not terminate at moraine positions, despite the prevalence of moraines in the area. Some meltwater channels are aligned conformably with lineation trends, whereas in some places meltwater channels cut obliquely to the surrounding lineations. North of the Garry lakes, there is a series of long (up to 100 km) relatively straight channels that may have formed subglacially. However, they typically trend down normal slopes and are not associated with other glacial landforms, like eskers and moraines, and therefore have been classified as ‘possible’ subglacial channels and omitted from the map.

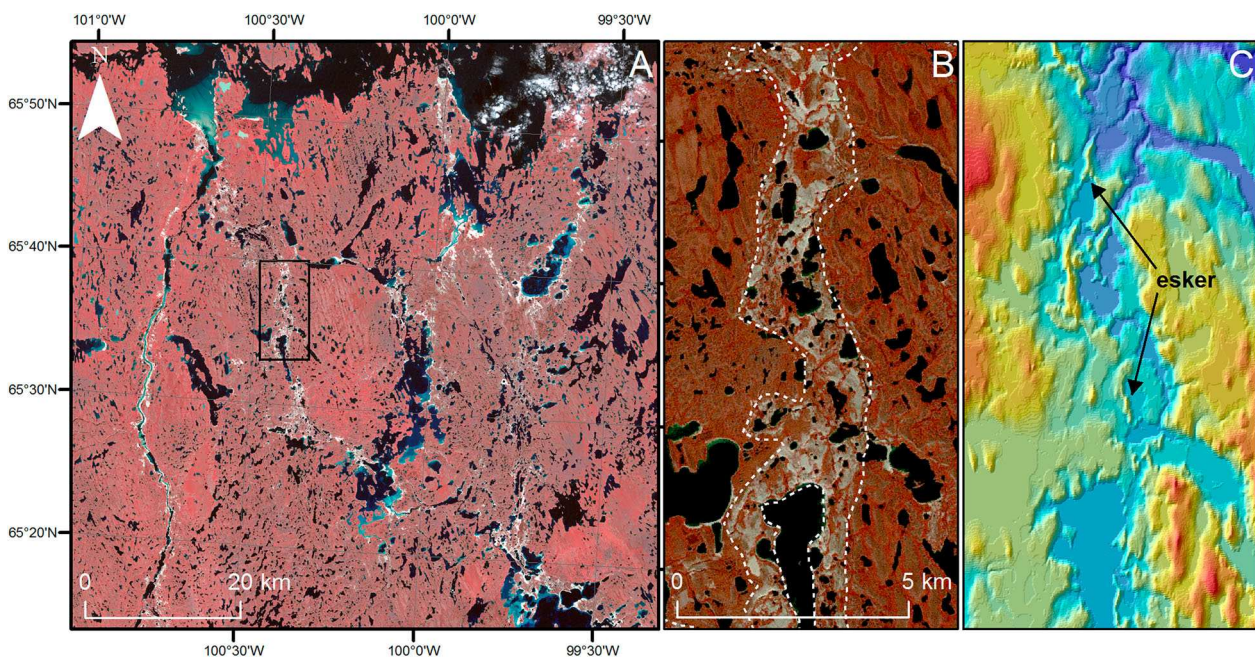
*Ice-contact outwash fans and deltas* (Figure 8) comprise approximately triangular mounds and flat-topped hills up to a few kilometres in diameter, composed of glaciofluvial sand and gravel. They are typically found at the terminus of esker segments and/or at moraine positions (see also Helie, 1984; St-Onge & Kerr, 2013, 2014b). In contrast, the meltwater channels are rarely associated with fans and deltas.



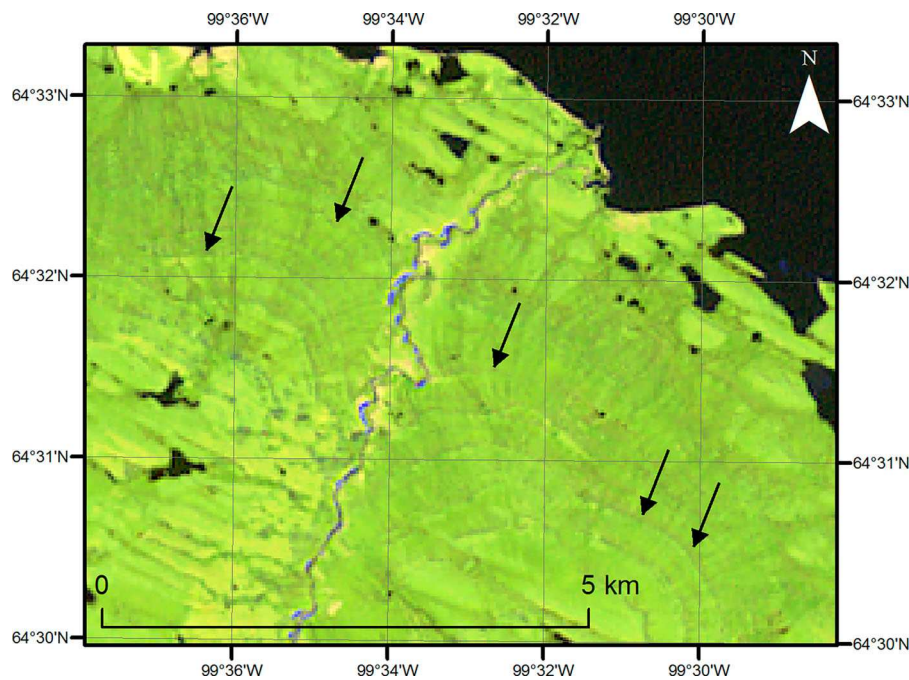
**Figure 8.** Ice-contact outwash fans/deltas seen in (A) CDED and (B) Landsat ETM+ (R,G,B 4,3,2) imagery. Location is given in Figure 1.

*Glaciofluvial deposits* (Figure 9) form wide (up to 6 km) corridor-like tracts of glaciofluvial sand and gravel, often located within erosional corridors (cf. Rampton, 2000; Utting, Ward, & Little, 2009). These deposits are commonly associated with aligned eskers, which may suggest that they form in subglacial positions (St-Onge, 1984). They occur exclusively north of Aberdeen Lake and are particularly extensive in the area between Aberdeen and Garry Lakes, where they are aligned with a relatively strong N–S orientation.

*Abandoned shorelines* (Figure 10) are present in a restricted band between approximately 80 and 280 m a.s.l., surrounding Aberdeen Lake and Shultz Lake (Aylsworth, 1990). Raised shorelines are also present around the Garry lakes, a few metres above present lake levels. They reflect a series of higher lake levels and subsequent marine incursion (Dyke et al., 2003; McMartin et al., 2008; Prest et al., 1968). Lakes likely formed in proglacial positions, dammed by ice to the south and east.



**Figure 9.** Glaciofluvial deposits. (A) Tracts of glaciofluvial deposits (light colours) between Aberdeen and Garry Lakes shown in Landsat ETM+ (R,G,B 4,3,2) imagery. Location is given in Figure 1. (B) Close-up of the box in A with outline of mapping. Landsat image is pan-sharpened. (C) DEM showing the same area as B. Note the esker in close association with the glaciofluvial deposits.



**Figure 10.** Abandoned lake shorelines (indicated by black arrows) shown in Landsat ETM+ (R,G,B 7,5,2) imagery. Location is given in Figure 1.

## 6. Discussion and implications

This paper presents a map of the glacial geomorphology of zone 66 of the NTS system of Canada. Mapping from Landsat imagery and CDED elevation data reveal a large number of glacial landforms, representing a complex glacial history. Ubiquitous glacial lineations include the well-documented Dubawnt Lake ice stream bed in the southern part of the area, which records rapid ice flow roughly from east to west (Stokes & Clark, 2003a, 2003b). A further major flow is recorded along a south–north axis across much of the eastern part of the area, which may have fed the Boothia Ice Stream to the north–east (see also Hodder et al., 2016; Kleman et al., 2007; Margold et al., 2015). In addition to these large flow events, the landform record also reveals several smaller events which, in some locations, are recorded by complex clusters of lineations cross-cutting in up to three different directions.

Meltwater landforms, including eskers, meltwater channels, ice-contact outwash fans and deltas and glaciofluvial deposits, record the hydrological component of the ice sheet during deglaciation as it retreated from the north–west towards the final location of the Keewatin Ice Divide to the east–south–east of the area (McMartin & Henderson, 2004). We identified several different arrangements, scales and types of meltwater landform, which suggests that the mode of subglacial drainage varied in space and time. In particular, tracts of glaciofluvial deposits and larger meltwater channels (tunnel valleys) form a distinctive spatial pattern between Aberdeen Lake and the Garry Lakes, and this indicates the intriguing possibility that they may

reflect the transportation of meltwater between the two lakes. It is possible that the depressions in which these lakes now sit were occupied by subglacial lakes (Livingstone, Clark, & Tarasov, 2013) prior to the development of proglacial lakes and then marine inundation during deglaciation (cf. Dyke, 2004; Dyke et al., 2003; Prest et al., 1968; Stokes & Clark, 2004). Further analysis is required to determine the precise nature of meltwater drainage in this area but this highlights the new insights that can be gleaned by incorporating meltwater dynamics into palaeo-ice sheet reconstructions.

As well as providing a detailed database that may be used for ice-margin and ice dynamic reconstructions, extensive glaciofluvial landforms, including landforms not previously mapped detail such as corridors of glaciofluvial deposits and meltwater channels, permit the evolving hydrology of the Laurentide Ice Sheet to be reconstructed. It is therefore anticipated that the data contained within this map will be used to produce a detailed reconstruction of (i) ice-margin retreat; (ii) evolving ice dynamics and (iii) evolving meltwater systems of this sector of the Laurentide Ice Sheet during its deglaciation.

## Software

Esri ArcGIS 10.3 was used to produce the map and figures.

## Acknowledgements

We thank Janet Campbell and Dave Evans for detailed reviews which significantly improved the clarity of the

manuscript and map. We thank John Abraham for his cartographic review which improved the presentation of the map.

## Disclosure statement

No potential conflict of interest was reported by the authors.

## ORCID

Robert D. Storrar  <http://orcid.org/0000-0003-4738-0082>  
Stephen J. Livingstone  <http://orcid.org/0000-0002-7240-5037>

## References

- Aylsworth, J. M. (1990). *Surficial Geology, Aberdeen Lake, District of Keewatin, Northwest Territories*. Geological Survey of Canada, Map 44-1989 scale 1:125,000.
- Aylsworth, J. M., & Clarke, M. D. (1989). *Surficial Geology, Beverly Lake, District of Keewatin, Northwest Territories*. Geological Survey of Canada, Map 40-1989, scale 1:250,000.
- Aylsworth, J. M., Cunningham, C. M., & Shilts, W. W. (1990). *Surficial Geology, Schultz Lake, District of Keewatin, Northwest Territories*. Geological Survey of Canada, Map 43-1989 scale 1:125,000.
- Aylsworth, J. M., & Shilts, W. W. (1989a). *Glacial features around the Keewatin Ice Divide: Districts of Mackenzie and Keewatin*. Geological Survey of Canada, Map 24-1987. 1:1,000,000.
- Aylsworth, J. M., & Shilts, W. W. (1989b). Bedforms of the Keewatin Ice Sheet, Canada. *Sedimentary Geology*, 62, 407–428.
- Barber, D. C., Dyke, A., Hillaire-Marcel, C., Jennings, A. E., Andrews, J. T., Kerwin, M. W., ... Gagnon, J. M. (1999). Forcing of the cold event of 8,200 years ago by catastrophic drainage of Laurentide lakes. *Nature*, 400, 344–348.
- Bartholomew, I., Nienow, P., Mair, D., Hubbard, A., King, M. A., & Sole, A. (2010). Seasonal evolution of subglacial drainage and acceleration in a Greenland outlet glacier. *Nature Geoscience*, 3, 408–411.
- Boulton, G. S., & Clark, C. D. (1990). A highly mobile Laurentide ice sheet revealed by satellite images of glacial lineations. *Nature*, 346, 813–817.
- Brennand, T. A. (2000). Deglacial meltwater drainage and glaciodynamics: Inferences from Laurentide eskers, Canada. *Geomorphology*, 32, 263–293.
- Brennand, T. A., & Shaw, J. (1994). Tunnel channels and associated landforms, south-central Ontario: Their implications for ice-sheet hydrology. *Canadian Journal of Earth Sciences*, 31, 505–522.
- Carlson, A. E., Anslow, F. S., Obbink, E. A., LeGrande, A. N., Ullman, D. J., & Licciardi, J. M. (2009). Surface-melt driven Laurentide Ice Sheet retreat during the early Holocene. *Geophysical Research Letters*, L24502.
- Clark, C. D. (1993). Mega-scale glacial lineations and cross-cutting ice-flow landforms. *Earth Surface Processes and Landforms*, 18, 1–29.
- Clark, P. U. (1994). Unstable behavior of the Laurentide Ice Sheet over deforming sediment and its implications for climate change. *Quaternary Research*, 41, 19–25.
- Clark, P. U., Alley, R. B., & Pollard, D. (1999). Northern hemisphere ice-sheet influences on global climate change. *Science*, 286, 1104–1111.
- Craig, B. G. (1961). *Surficial geology of northern District of Keewatin, Northwest Territories*. Geological Survey of Canada, Map 7-1961, Scale 1:1,013,760.
- Craig, B. G. (1964). *Surficial geology of east-central District of Mackenzie*. Geological Survey of Canada, Bulletin, 99.
- De Angelis, H. (2007). Glacial geomorphology of the east-central Canadian Arctic. *Journal of Maps*, 3, 323–341.
- De Angelis, H., & Kleman, J. (2005). Palaeo-ice streams in the northern Keewatin sector of the Laurentide ice sheet. *Annals of Glaciology*, 42, 135–144.
- Dunlop, P., & Clark, C. D. (2006). The morphological characteristics of ribbed moraine. *Quaternary Science Reviews*, 25, 1668–1691.
- Dunlop, P., Clark, C. D., & Hindmarsh, R. C. A. (2008). Bed ribbing instability explanation: Testing a numerical model of ribbed moraine formation arising from coupled flow of ice and subglacial sediment. *Journal of Geophysical Research-Earth Surface*, 113, 1–15.
- Dyke, A., Andrews, J., Clark, P., England, J., Miller, G., Shaw, J., & Veillette, J. (2002). The Laurentide and Innuitian ice sheets during the last glacial maximum. *Quaternary Science Reviews*, 21, 9–31.
- Dyke, A. S. (1993). Landscapes of cold-centred Late Wisconsinan ice caps, Arctic Canada. *Progress in Physical Geography*, 17, 223–247.
- Dyke, A. S. (2004). An outline of North American deglaciation with emphasis on central and northern Canada. *Quaternary Glaciations: Extent and Chronology*, 2, 373–424.
- Dyke, A. S., & Dredge, L. A. (1989). Quaternary geology of the northwestern Canadian Shield. In R. J. Fulton (Ed.), *Quaternary geology of Canada and Greenland* (pp. 189–214). Ottawa: Geological Survey of Canada.
- Dyke, A. S., Moore, A., & Robertson, L. (2003). *Deglaciation of North America*. Geological Survey of Canada, Open File, 1574.
- Dyke, A. S., & Prest, V. K. (1987). Late Wisconsinan and Holocene history of the Laurentide ice sheet. *Géographie Physique et Quaternaire*, 41, 237–263.
- Greenwood, S. L., Clark, C. D., & Hughes, A. L. C. (2007). Formalising an inversion methodology for reconstructing ice-sheet retreat patterns from meltwater channels: Application to the British Ice Sheet. *Journal of Quaternary Science*, 22, 637–645.
- Greenwood, S. L., Clason, C. C., Helanow, C., & Margold, M. (2016). Theoretical, contemporary observational and palaeo-perspectives on ice sheet hydrology: Processes and products. *Earth-Science Reviews*, 155, 1–27.
- Greenwood, S. L., & Kleman, J. (2010). Glacial landforms of extreme size in the Keewatin sector of the Laurentide Ice Sheet. *Quaternary Science Reviews*, 29, 1894–1910.
- Hättestrand, C. (1997). Ribbed moraines in Sweden – distribution pattern and palaeoglaciological implications. *Sedimentary Geology*, 111, 41–56.
- Hättestrand, C., & Kleman, J. (1999). Ribbed moraine formation. *Quaternary Science Reviews*, 18, 43–61.
- Helie, R. G. (1984). *Surficial geology, King William Island and Adelaide Peninsula, Districts of Keewatin and Franklin, Northwest Territories*. Geological Survey of Canada, Map 1618A, scale 1:250,000.
- Hodder, T. J., Ross, M., & Menzies, J. (2016). Sedimentary record of ice divide migration and ice streams in the Keewatin core region of the Laurentide ice sheet. *Sedimentary Geology*, 338, 97–114.
- Kehew, A. E., Piotrowski, J. A., & Jørgensen, F. (2012). Tunnel valleys: Concepts and controversies – A review. *Earth-Science Reviews*, 113, 33–58.

- Kleman, J., & Borgström, I. (1996). Reconstruction of palaeo-ice sheets: The use of geomorphological data. *Earth Surface Processes and Landforms*, 21, 893–909.
- Kleman, J., Hättstrand, C., Stroeven, A. P., Jansson, K. N., De Angelis, H., & Borgström, I. (2007). Reconstruction of Palaeo Ice Sheets inversion of their glacial geomorphological record. In P. G. Knight (Ed.), *Glaciology and earth's changing environment* (pp. 192–198). London: Blackwell.
- Livingstone, S. J., & Clark, C. D. (2016). Morphological properties of tunnel valleys of the southern sector of the Laurentide Ice Sheet and implications for their formation. *Earth Surface Dynamics*, 4, 567–589.
- Livingstone, S. J., Clark, C. D., & Tarasov, L. (2013). Modelling North American palaeo-subglacial lakes and their meltwater drainage pathways. *Earth and Planetary Science Letters*, 375, 13–33.
- Lundqvist, J. (1989). Rogen (ribbed) moraine – identification and possible origin. *Sedimentary Geology*, 62, 281–292.
- Maag, H. (1969). *Ice Dammed Lakes and Marginal Glacial Drainage on Axel Heiberg Island*. Axel Heiberg Island Research Report, McGill University, Montreal.
- Margold, M., Jansson, K. N., Kleman, J., & Stroeven, A. P. (2011). Glacial meltwater landforms of central British Columbia. *Journal of Maps*, 7, 486–506.
- Margold, M., Stokes, C. R., & Clark, C. D. (2015). Ice streams in the Laurentide Ice Sheet: Identification, characteristics and comparison to modern ice sheets. *Earth-Science Reviews*, 143, 117–146.
- McMartin, I., Dredge, L. A., & Aylsworth, J. M. (2008). *Surficial geology, Schultz Lake South, Nunavut*. Geological Survey of Canada, Map 2120A, scale 1:100,000.
- McMartin, I., Dredge, L. A., & Robertson, L. (2005). *Ice flow maps and datasets: Schultz Lake (NTS 66A) and Wager Bay (NTS 56G) areas, Kivalliq Region, Nunavut*. Geological Survey of Canada, Open File, 4926.
- McMartin, I., & Henderson, P. J. (2004). Evidence from Keewatin (central Nunavut) for paleo-ice divide migration. *Géographie physique et Quaternaire*, 58, 163–186.
- Mullins, H. T., & Hinchey, E. J. (1989). Erosion and infill of New York Finger Lakes: Implications for Laurentide ice sheet deglaciation. *Geology*, 17, 622–625.
- Ó Cofaigh, C. (1996). Tunnel valley genesis. *Progress in Physical Geography*, 20, 1–19.
- Ó Cofaigh, C., Evans, D. J. A., & Smith, I. R. (2010). Large-scale reorganization and sedimentation of terrestrial ice streams during late Wisconsinan Laurentide Ice Sheet deglaciation. *Geological Society of America Bulletin*, 122, 743–756.
- Prest, V. K., Grant, D. R., & Rampton, V. N. (1968). *Glacial map of Canada*. Geological Survey of Canada, Map 1253A. 1:5,000,000.
- Rampton, V. (2000). Large-scale effects of subglacial meltwater flow in the southern Slave Province, Northwest Territories, Canada. *Canadian Journal of Earth Sciences*, 37, 81–93.
- Ross, M., Campbell, J. E., Parent, M., & Adams, R. S. (2009). Palaeo-ice streams and the subglacial landscape mosaic of the North American mid-continental prairies. *Boreas*, 38, 421–439.
- Schoof, C. (2010). Ice-sheet acceleration driven by melt supply variability. *Nature*, 468, 803–806.
- Shakun, J. D., Clark, P. U., He, F., Marcott, S. A., Mix, A. C., Liu, Z., ... Bard, E. (2012). Global warming preceded by increasing carbon dioxide concentrations during the last deglaciation. *Nature*, 484, 49–54.
- Smith, M. J., & Clark, C. D. (2005). Methods for the visualization of digital elevation models for landform mapping. *Earth Surface Processes and Landforms*, 30, 885–900.
- Smith, M. J., & Wise, S. M. (2007). Problems of bias in mapping linear landforms from satellite imagery. *International Journal of Applied Earth Observation and Geoinformation*, 9, 65–78.
- St-Onge, D. A. (1984). Surficial deposits of the Redrock Lake area, District of Mackenzie. *Current Research: Part A. Geological Survey of Canada Paper*, 84-01A, 271–278.
- St-Onge, D. A., & Kerr, D. E. (2013). *Reconnaissance surficial geology, Jervoise River, Nunavut, NTS 66-E, north half*. Geological Survey of Canada, Canadian Geoscience Map 131 (preliminary), scale 1:125,000.
- St-Onge, D. A., & Kerr, D. E. (2014a). *Reconnaissance surficial geology, MacAlpine Lake, south half, Nunavut, NTS 66-L*. Geological Survey of Canada, Canadian Geoscience Map 142 (preliminary), scale 1:125,000.
- St-Onge, D. A., & Kerr, D. E. (2014b). *Reconnaissance surficial geology, Joe Lake, Nunavut, NTS 66-J south half*. Geological Survey of Canada, Canadian Geoscience Map 194 (preliminary), scale 1:125,000.
- St-Onge, D. A., & Kerr, D. E. (2015). *Reconnaissance surficial geology, Deep Rose Lake, Nunavut, NTS 66-G north*. Geological Survey of Canada, Canadian Geoscience Map 208 (preliminary), scale 1:125,000.
- Stokes, C. R., & Clark, C. D. (2001). Palaeo-ice streams. *Quaternary Science Reviews*, 20, 1437–1457.
- Stokes, C. R., & Clark, C. D. (2003a). The Dubawnt lake palaeo-ice stream: Evidence for dynamic ice sheet behaviour on the Canadian Shield and insights regarding the controls on ice-stream location and vigour. *Boreas*, 32, 263–279.
- Stokes, C. R., & Clark, C. D. (2003b). Laurentide ice streaming on the Canadian Shield: A conflict with the soft-bedded ice stream paradigm? *Geology*, 31, 347–350.
- Stokes, C. R., & Clark, C. D. (2004). Evolution of late glacial ice-marginal lakes on the northwestern Canadian Shield and their influence on the location of the Dubawnt Lake palaeo-ice stream. *Palaeogeography, Palaeoclimatology, Palaeoecology*, 215, 155–171.
- Stokes, C. R., Clark, C. D., & Storrar, R. (2009). Major changes in ice stream dynamics during deglaciation of the north-western margin of the Laurentide Ice Sheet. *Quaternary Science Reviews*, 28, 721–738.
- Stokes, C. R., Margold, M., Clark, C. D., & Tarasov, L. (2016). Ice stream activity scaled to ice sheet volume during Laurentide Ice Sheet deglaciation. *Nature*, 530, 322–326.
- Stokes, C. R., Tarasov, L., & Dyke, A. S. (2012). Dynamics of the North American Ice Sheet Complex during its inception and build-up to the Last Glacial Maximum. *Quaternary Science Reviews*, 50, 86–104.
- Storrar, R. D., Stokes, C. R., & Evans, D. J. A. (2013). A map of large Canadian eskers from Landsat satellite imagery. *Journal of Maps*, 9, 456–473.
- Storrar, R. D., Stokes, C. R., & Evans, D. J. A. (2014a). Increased channelization of subglacial drainage during deglaciation of the Laurentide Ice Sheet. *Geology*, 42, 239–242.
- Storrar, R. D., Stokes, C. R., & Evans, D. J. A. (2014b). Morphometry and pattern of a large sample (>20,000) of Canadian eskers and implications for subglacial drainage beneath ice sheets. *Quaternary Science Reviews*, 105, 1–25.
- Tarasov, L., & Peltier, W. (2006). A calibrated deglacial drainage chronology for the North American continent: Evidence of an Arctic trigger for the younger dryas. *Quaternary Science Reviews*, 25, 659–688.
- Tarasov, L., & Peltier, W. R. (2004). A geophysically constrained large ensemble analysis of the deglacial history

- of the North American ice-sheet complex. *Quaternary Science Reviews*, 23, 359–388.
- Thomas, R. D. (1981a). *Surficial Geology, Amer Lake, District of Keewatin*. Geological Survey of Canada, Preliminary Map 9-1981, Scale 1:250,000.
- Thomas, R. D. (1981b). *Surficial Geology, Montesor River, District of Keewatin*. Geological Survey of Canada, Preliminary Map 10-1981, Scale 1:250,000.
- Utting, D. J., Ward, B. C., & Little, E. C. (2009). Genesis of hummocks in glaciofluvial corridors near the Keewatin Ice Divide, Canada. *Boreas*, 38, 471–481.
- Wheeler, J. O., Hoffman, P. F., Card, K. D., Davidson, A., Sanford, B. V., Okulitch, A. V., & Roest, W. R. (1996). *Geological map of Canada*. Geological Survey of Canada, map 1860A.
- Wright, H. (1973). Tunnel valleys, glacial surges, and subglacial hydrology of the superior Lobe, Minnesota. *Geological Society of America Memoirs*, 136, 251–276.
- Zwally, H. J., Abdalati, W., Herring, T., Larson, K., Saba, J., & Steffen, K. (2002). Surface melt-induced acceleration of Greenland ice-sheet flow. *Science*, 297, 218–222.