

Utah State University

DigitalCommons@USU

---

Library Faculty & Staff Presentations

Libraries

---

11-2016

## Library Workflow Exchange: Community Documentation of Best Practices

A Neatrou

Liz Woolcott  
*Utah State University*

Follow this and additional works at: [https://digitalcommons.usu.edu/lib\\_present](https://digitalcommons.usu.edu/lib_present)



Part of the [Library and Information Science Commons](#)

---

### Recommended Citation

Neatrou A. and Woolcott, L. (2016). Library Workflow Exchange: Community Documentation of Best Practices. Digital Library Federation Forum, Milwaukee, Wisconsin, November 2016.

This Presentation is brought to you for free and open access by the Libraries at DigitalCommons@USU. It has been accepted for inclusion in Library Faculty & Staff Presentations by an authorized administrator of DigitalCommons@USU. For more information, please contact [digitalcommons@usu.edu](mailto:digitalcommons@usu.edu).



# LIBRARY WORKFLOW

EXCHANGE

COMMUNITY DOCUMENTATION OF  
BEST PRACTICES

ANNA NEATROUR  
[ANNA.NEATROUR@UTAH.EDU](mailto:ANNA.NEATROUR@UTAH.EDU)  
@ANNANEAT



LIZ WOOLCOTT  
[LIZ.WOOLCOTT@USU.EDU](mailto:LIZ.WOOLCOTT@USU.EDU)  
@LizWOOLCOTT

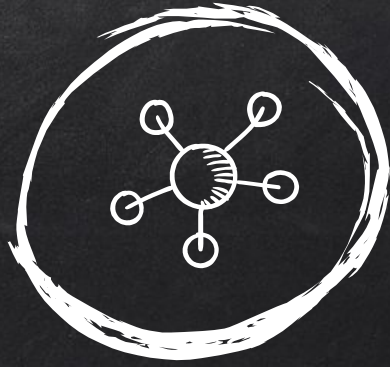


HELLO!

I am working on [insert project here]\*

I wonder if anyone else has done this before?

- \* **Migrating** data
- \* **Reconciling** data
- \* **Claiming** serials
- \* **Managing** a library project
- \* **Cleaning** up records
- \* **Learning** to code
- \* **Documenting** my work
- \* **Developing** assessment methods



SOMEONE, SOMEWHERE...

...is doing (almost) the same thing you are.



So, what if we shared our knowledge?

INTRODUCING....

LIBRARY

WORKFLOW

EXCHANGE

[LIBRARYWORKFLOWEXCHANGE.ORG](http://LIBRARYWORKFLOWEXCHANGE.ORG)



# QUICK FACTS

**Created by**  
**Anna Neatrou**  
**Liz Woolcott**



**Developed**  
June 2015



**Launched**  
Fall 2015



**Added Subject Editors, 2016:**

**Robert Heaton**, Electronic Resources  
and Collection Development

8,730

SESSIONS

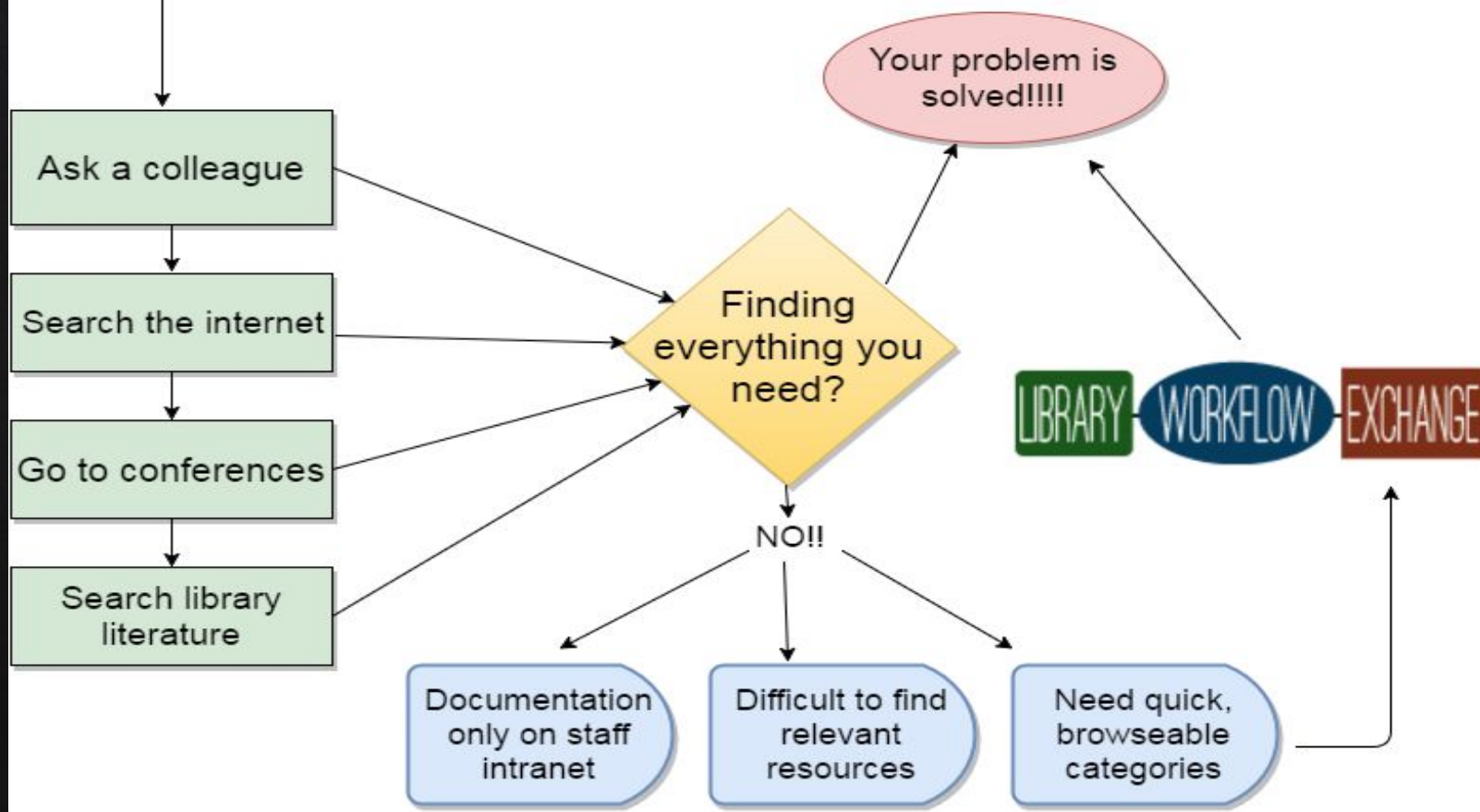
6,524 USERS

19,487

PAGE VIEWS



# How to find library workflows





Workflows and documentation  
exist in many places.

- Staff intranets
- Blog posts
- Published articles
- Library websites
- Github

[Home](#)

## From Digital Commons to OCLC: A Tailored Approach for Harvesting and Transforming ETD Metadata into High-Quality Records

Posted on October 7, 2016 by  Liz

by Marielle Veve, University of North Florida The following paper presents an extension of the semi-automated approach originally created by Deng and Reese, but customized and adapted to address the particular needs of the Digital Commons community and updated to integrate the latest Resource Description & Access (RDA) content standards for ETDs. Advantages and disadvantages...

Posted in [Dublin Core](#), [Institutional Repository Workflows](#), [Metadata Harvesting](#), [Metadata](#)

[Transformation, RDA](#) Tagged [Digital Commons](#), [Electronic Theses and Dissertations](#), [ETD](#), [OCLC](#),

[RDA](#), [Resource Description and Access](#)  [Leave a comment](#)

[Read more](#)

## Open Archives Initiatives (OAI) Queries

Posted on October 4, 2016 by  Liz

by the Mountain West Digital Library How to view what is being served up in real time via OAI for your collection.



### Social Media

Follow Library Workflow Exchange on Twitter:

[@LibWorkflowEx](#)

Facebook:

 Like

 Share

You and 147 others like this.



### Subscribe to posts

Created by [Webfish](#).

# Working with Linked Data in MarcEdit

📅 Posted on [September 29, 2016](#) by  [Liz](#)

by the University Library of the University of Illinois at Urbana-Champaign

MarcEdit's linked data tool is somewhat experimental, but it allows users to automatically generate links to resolve access points from the LC or OCLC VIAF authority records. Using this tool, it is possible to append linked data to 1XX, 6XX, and 7XX fields. What follows is a brief demonstration of this functionality and a results comparison based on different options selected.

*This workflow is one of many MarcEdit processes that are outlined in a LibGuide produced by the University of Illinois at Urbana-Champaign. The processes are linked individually in the Library Workflow Exchange to facilitate discovery of specific step-by-step workflows.*

Available at this URL: <http://guides.library.illinois.edu/c.php?g=463460&p=3168070>

This entry was posted in  [Authority Control](#), [Cataloging and Metadata](#), [Linked Data Conversion](#), [MARC](#), [Metadata Transformation](#), [RDA](#), [Standards](#) and tagged  [authority control](#), [Library of Congress Name Authority File](#), [Linked Data](#), [MarcEdit](#), [VIAF](#).

Bookmark the  [permalink](#)  [Edit](#)

# CATEGORIES

Accessibility	2
Acquisitions	7
Archives	12
Digital Content Linking	1
Cataloging and Metadata	105
Audio/Visual Cataloging	5
Authority Control	6
Metadata Analysis	6
Metadata Creation	18
Metadata Embedding	5
Metadata Extraction	6
Metadata Harvesting	9
Metadata Mapping	1
Metadata Transformation	39
Serials	5
Standards	61
Citation	1
Collection Development	5
Collection analysis	1
Curation	1

Curation	1
Digitization Workflows	57
born digital	8
digitization	21
preservation	15
quality control	1
scanning	2
Electronic Resources	8
Exhibit Creation	7
Interlibrary Loan	1
OAI-PMH workflows	9
Optical Character Recognition (OCR)	2
Preservation	6
Quality Control	4
Scholarly Communications	3
Institutional Repository Workflows	3



# TAGS

## Tags

acquisitions ArchivesSpace  
authority control bagit barcoding Best Practices  
cataloging Catmandu Comma Separated Values  
CONTENTdm CSV Digital Commons digital  
preservation Dspace Dublin Core EAD  
electronic resources  
embedded metadata Encoded  
Archival Description Excel exif fedora  
finding aid GeoNames Geospatial metadata Library of  
Congress Name Authority File licensing **MARC**  
**MarcEdit** MARCXML neatline  
newspapers OAI-PMH OCLC OCR Omeka  
open refine preservation  
python RDA serials software toolkit xforms  
XML



## IMPACT/BENEFITS



- ❑ CENTRALIZED KNOWLEDGEBASE
- ❑ RICH SEARCHING
- ❑ UPDATES VIA SOCIAL MEDIA
- ❑ IMPROVES GOOGLE PAGERANK OF ORIGINAL SITES
- ❑ FLEXIBLE, WITH ROOM TO GROW



# HOW CAN I GET INVOLVED?



*\* \* OR POINT US TO OTHERS*



TO FIND OUT MORE

@LibWorkflowEx



fb.me/libraryworkflowexchange



Contact us

**Anna Neatour**

University of Utah

[anna.neatour@utah.edu](mailto:anna.neatour@utah.edu)

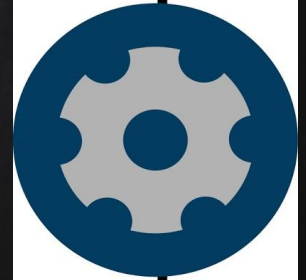
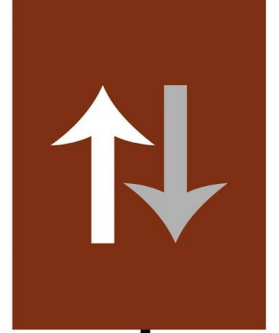
@annaneat

**Liz Woolcott**

Utah State University

[liz.woolcott@usu.edu](mailto:liz.woolcott@usu.edu)

@lizwoolcott







**THANKS!**

**Any questions?**