

2016

NOBL Neighborhood Association Greenspace

Hilary Lewis
Grand Valley State University

Kate Casey
Grand Valley State University

Lede Stevens
Grand Valley State University

Madie Fairchild
Grand Valley State University

Tori Graves
Grand Valley State University

Follow this and additional works at: <http://scholarworks.gvsu.edu/wickedproblems>

Recommended Citation

Lewis, Hilary; Casey, Kate; Stevens, Lede; Fairchild, Madie; and Graves, Tori, "NOBL Neighborhood Association Greenspace" (2016). *LIB 322: Wicked Problems of Sustainability*. Paper 26.
<http://scholarworks.gvsu.edu/wickedproblems/26>

This Article is brought to you for free and open access by the Liberal Studies at ScholarWorks@GVSU. It has been accepted for inclusion in LIB 322: Wicked Problems of Sustainability by an authorized administrator of ScholarWorks@GVSU. For more information, please contact scholarworks@gvsu.edu.

NOBL Neighborhood Association Greenspace

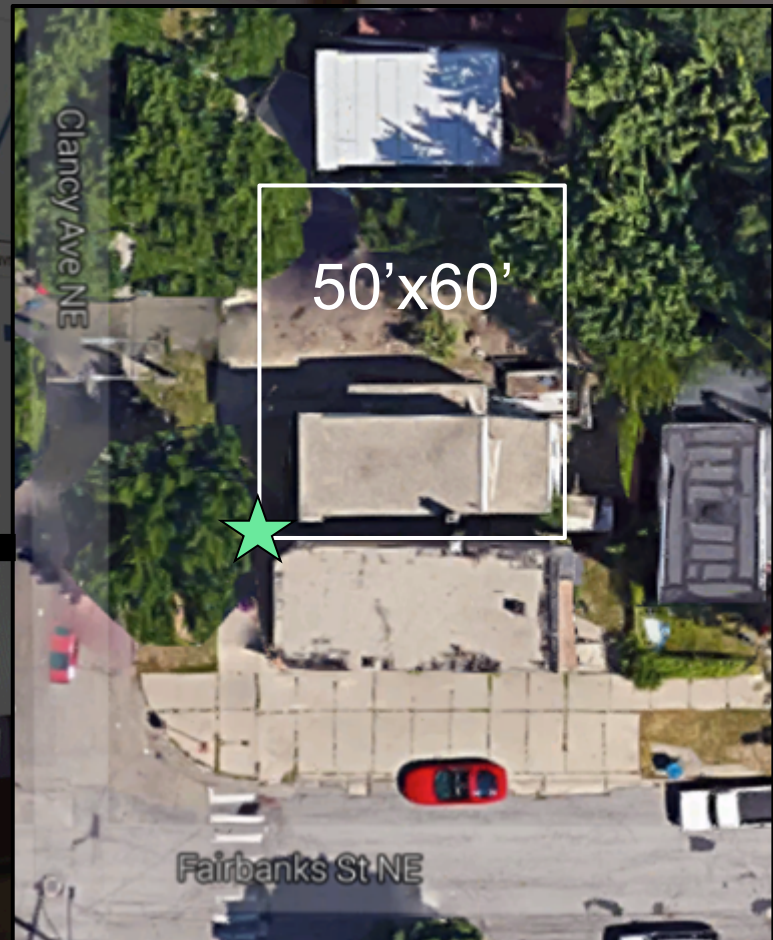
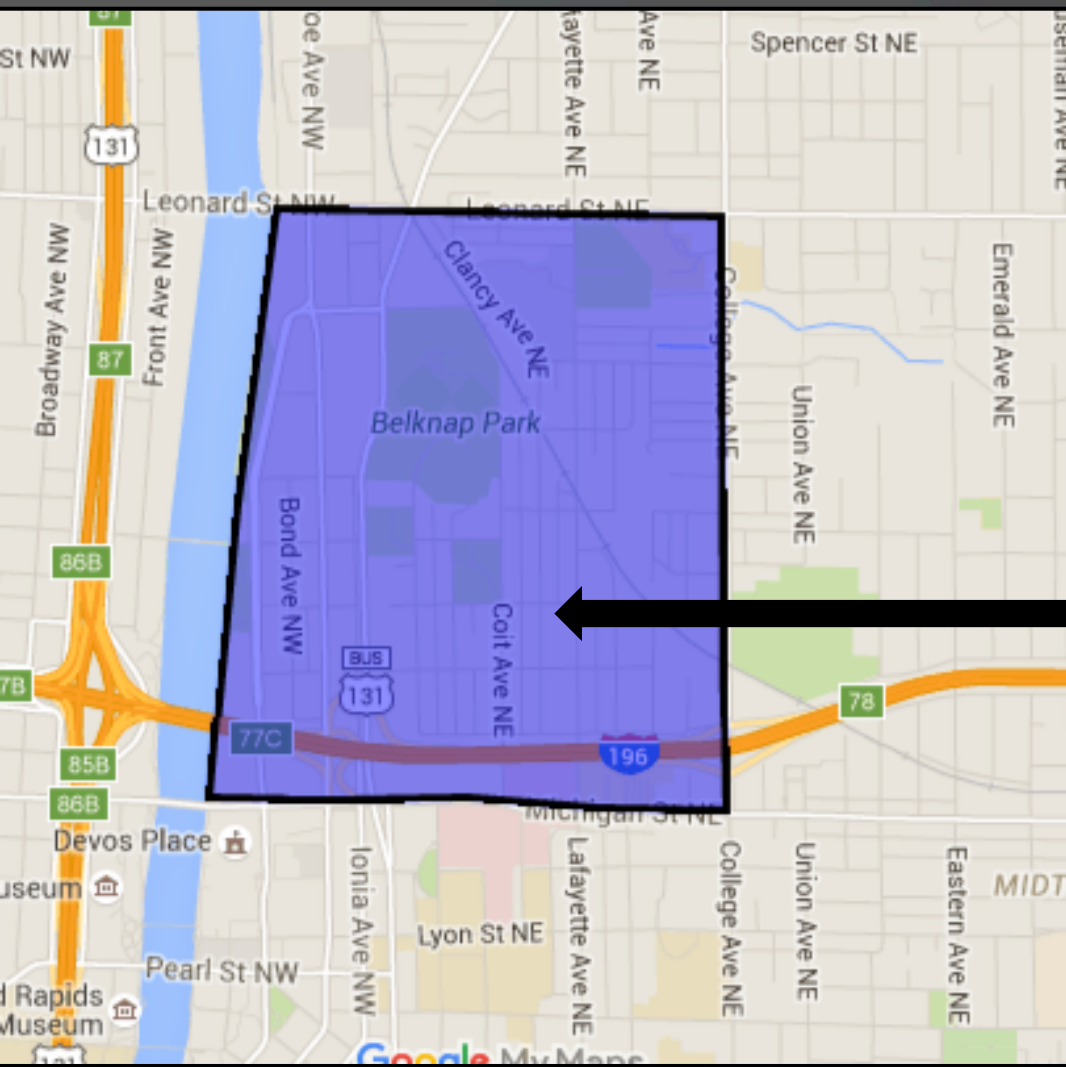
Hilary Lewis

Kate Casey

Lede Stevens

Madie Fairchild

Tori Graves



Google Maps



Neighbors of Belknap Lookout

noblgr.org

- Meet community partners
- Community outreach (surveys, meetings)
- Understand problems and barriers
- Create possible solutions

**FUTURE
ARTESIAN
GROUP
PROJECT.**

**PROPOSED
APARTMENTS.
12 HOMES
DEMOLISHED.**

**BELKNAP
BROWNSTONES.
2 HOMES
DEMOLISHED.**

**FUTURE GVSU
CAMPUS. ~100
HOMES
ACQUIRED.**

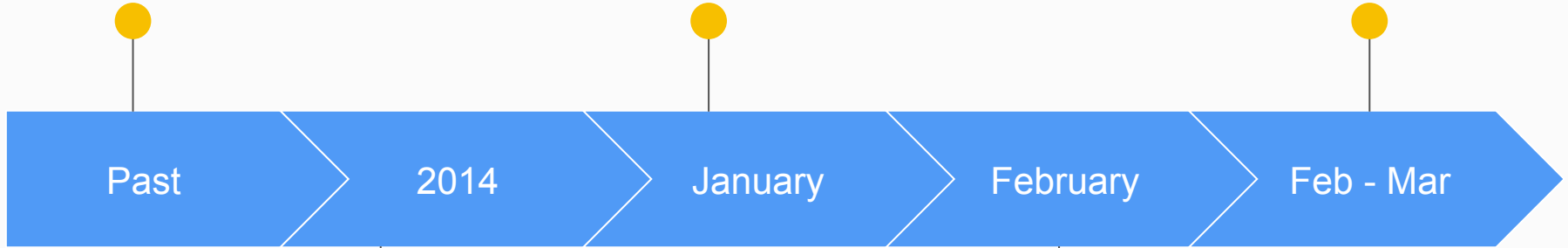
**GATEWAY AT
BELKNAP.
14 HOMES
DEMOLISHED.**



GVSU buys land through eminent domain

LIB 322 NOBL group and Neighborhood Association connect

Grant received, construction of community center underway, serious greenspace planning begins



Past

2014

January

February

Feb - Mar

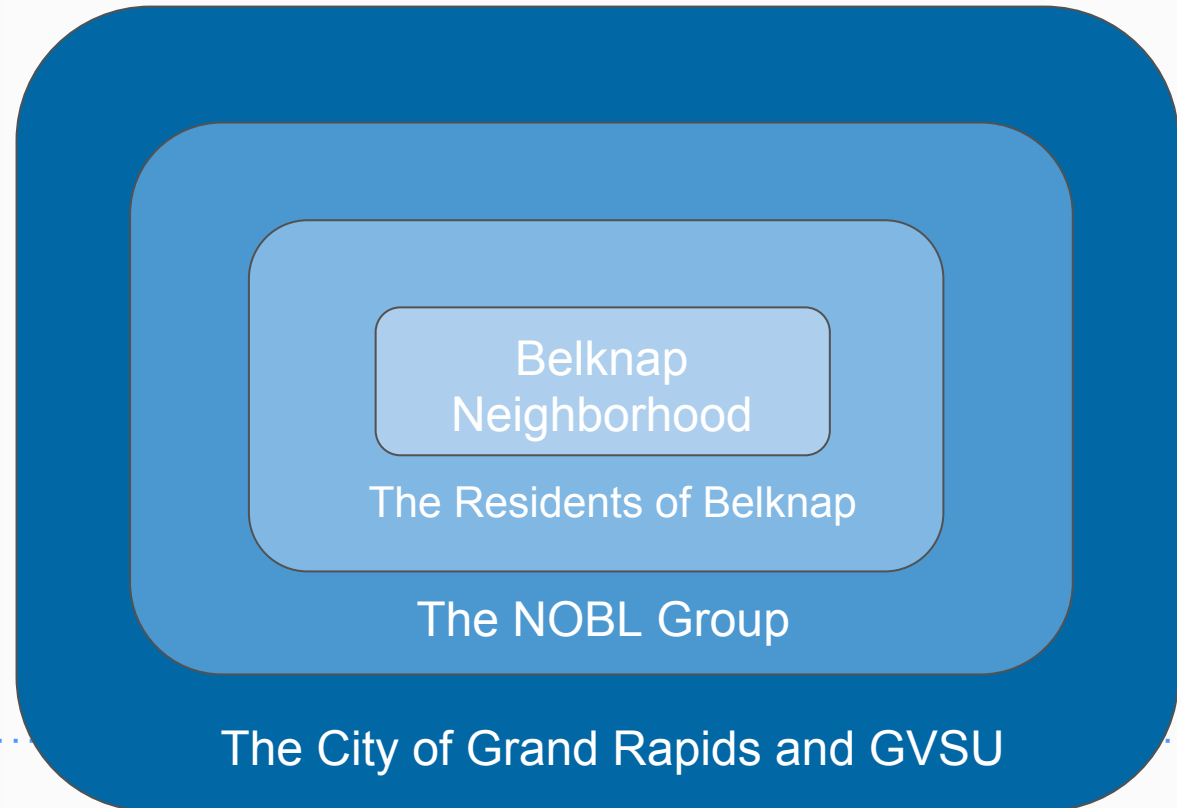
Neighborhood construction begins

Agreement reached between GVSU, city, and neighborhood

The Problem:

The Belknap
Neighborhood has
a Greenspace that
needs to be
utilized.

Stakeholder Map





50 feet

60 feet

Proposed Solution





Cost Breakdown

- Pergola
- Benches
- Butterfly Bushes/Plants
- Community Grill
- Gardening Equipment
- Raised Planter Boxes
- Shed
- Fencing
- Educational Material
- Bird Houses
- Ground leveling
- Miscellaneous

= \$4,750

(Roughly)

Why we
chose
this
model...

Community Growth &
Development

Sustainable/Manageable

Low Cost/Maintenance

Barriers

- Scheduling constraints
- Difficulty communicating
- Restricted access to community members
- Limited timeline

Next Steps...

- Increase community engagement/involvement
- Implement greenspace prototype
- Educational outreach to schools
- Create community workshops

Contacts/Community Partners

Kristi DeKraker

Email: noblgr@gmail.com

Info: Worked with the community for 20+ years. Knowledgeable of members and history of the community.

Barbra

Email: N/A

Info: Long time citizen of the Belknap Community and used to be a biology teacher. Very knowledgeable about environmental topics.

Rev. Jerome Burton

Email: pastorjerome@coitchurch.org

Info: Access to historic cobblestone to be used in the green space to personalize the space for the neighbors.

Angel

Email: N/A

Info: Contractor.

The Team

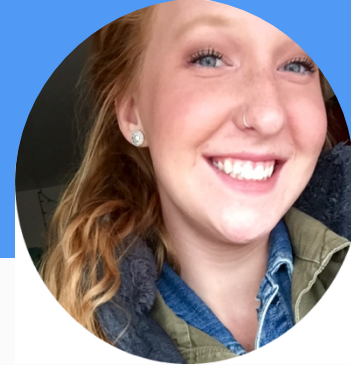
NOBL Neighborhood Association Greenspace



Hilary Lewis

lewishi@mail.gvsu.edu

616.516.8577



Madie Fairchild

fairchma@mail.gvsu.edu

734.837.3459



Tori Graves

vgraves95@gmail.com

248.303.1679

Kate Casey

Kcasey@jhgc corp.com

616.717.2660

Lede Stevens

Steveled@mail.gvsu.edu

269.586.4944