

2015

# Variable Effects of Nicotine, Anabasine, and their Interactions on Parasitized Bumble Bees

Lukas P. Thorburn

*University of Massachusetts Amherst*

Lynn S. Adler

*University of Massachusetts Amherst*

Rebecca E. Irwin

*North Carolina State University*

Follow this and additional works at: [https://scholarworks.umass.edu/biology\\_faculty\\_pubs](https://scholarworks.umass.edu/biology_faculty_pubs)



Part of the [Biology Commons](#)

---

## Recommended Citation

Thorburn, Lukas P.; Adler, Lynn S.; and Irwin, Rebecca E., "Variable Effects of Nicotine, Anabasine, and their Interactions on Parasitized Bumble Bees" (2015). *F1000 Research*. 612.

<https://doi.org/10.12688/f1000research.6870.2>

This Article is brought to you for free and open access by the Biology at ScholarWorks@UMass Amherst. It has been accepted for inclusion in Biology Department Faculty Publication Series by an authorized administrator of ScholarWorks@UMass Amherst. For more information, please contact [scholarworks@library.umass.edu](mailto:scholarworks@library.umass.edu).



RESEARCH ARTICLE

**REVISED** Variable effects of nicotine, anabasine, and their interactions on parasitized bumble bees [version 2; referees: 2 approved]

Previously titled: Variable effects of nicotine and anabasine on parasitized bumble bees

Lukas P. Thorburn<sup>1</sup>, Lynn S. Adler<sup>1</sup>, Rebecca E. Irwin<sup>2,3</sup>, Evan C. Palmer-Young<sup>1</sup>

<sup>1</sup>Department of Biology, University of Massachusetts at Amherst, Amherst, Massachusetts, USA

<sup>2</sup>Department of Biology, Dartmouth College Hanover, New Hampshire, USA

<sup>3</sup>Department of Applied Ecology, North Carolina State University, Raleigh, North Carolina, USA

**v2** First published: 21 Sep 2015, 4:880 (doi: [10.12688/f1000research.6870.1](https://doi.org/10.12688/f1000research.6870.1))  
 Latest published: 16 Dec 2015, 4:880 (doi: [10.12688/f1000research.6870.2](https://doi.org/10.12688/f1000research.6870.2))

**Abstract**

Secondary metabolites in floral nectar have been shown to reduce parasite load in two common bumble bee species. Previous studies on the effects of nectar secondary metabolites on parasitized bees have focused on single compounds in isolation; however, in nature, bees are simultaneously exposed to multiple compounds. We tested for interactions between the effects of two alkaloids found in the nectar of *Nicotiana* spp. plants, nicotine and anabasine, on parasite load and mortality in bumble bees (*Bombus impatiens*) infected with the intestinal parasite *Crithidia bombi*. Adult worker bees inoculated with *C. bombi* were fed nicotine and anabasine diet treatments in a factorial design, resulting in four nectar treatment combinations: 2 ppm nicotine, 5 ppm anabasine, 2ppm nicotine and 5 ppm anabasine together, or a control alkaloid-free solution. We conducted the experiment twice: first, with bees incubated under variable environmental conditions ('Variable'; temperatures varied from 10-35°C with ambient lighting); and second, under carefully controlled environmental conditions ('Stable'; 27°C incubator, constant darkness). In 'Variable', each alkaloid alone significantly decreased parasite loads, but this effect was not realized with the alkaloids in combination, suggesting an antagonistic interaction. Nicotine but not anabasine significantly increased mortality, and the two compounds had no interactive effects on mortality. In 'Stable', nicotine significantly increased parasite loads, the opposite of its effect in 'Variable'. While not significant, the relationship between anabasine and parasite loads was also positive. Interactive effects between the two alkaloids on parasite load were non-significant, but the pattern of antagonistic interaction was similar to that in the variable experiment. Neither alkaloid, nor their interaction, significantly affected mortality under controlled conditions. Our results do not indicate synergy between *Nicotiana* nectar alkaloids; however, they do suggest a complex interaction between secondary metabolites, parasites, and environmental variables, in which secondary metabolites can be either toxic or medicinal depending on context.

**Open Peer Review**

Referee Status:

	Invited Referees	
	1	2
<b>REVISED</b> version 2 published 16 Dec 2015	 report	 report
	↑	↑
version 1 published 21 Sep 2015	 report	 report

- 1 **Michael Simone-Finstrom**, USDA  
Agricultural Research Service USA,  
**Margarita Lopez-Uribe**, North Carolina State University USA  
**Margarita Lopez-Uribe**, North Carolina State University USA
- 2 **David Baracchi**, Queen Mary, University of London UK

**Discuss this article**

Comments (0)

**Corresponding author:** Evan C. Palmer-Young ([evan.palmeryoung@gmail.com](mailto:evan.palmeryoung@gmail.com))

**How to cite this article:** Thorburn LP, Adler LS, Irwin RE and Palmer-Young EC. **Variable effects of nicotine, anabasine, and their interactions on parasitized bumble bees [version 2; referees: 2 approved]** *F1000Research* 2015, 4:880 (doi: [10.12688/f1000research.6870.2](https://doi.org/10.12688/f1000research.6870.2))

**Copyright:** © 2015 Thorburn LP *et al.* This is an open access article distributed under the terms of the [Creative Commons Attribution Licence](#), which permits unrestricted use, distribution, and reproduction in any medium, provided the original work is properly cited. Data associated with the article are available under the terms of the [Creative Commons Zero "No rights reserved" data waiver](#) (CC0 1.0 Public domain dedication).

**Grant information:** This research was funded by the National Science Foundation under NSFDEB-1258096, NSF GRFP (Grant DGE-0907995 to ECPY), and NSF DDIG (Grant NSFDEB-1501907 to ECPY and LSA); by the National Research Initiative (NRI) Arthropod and Nematode Biology and Management Program of the USDA Cooperative State Research, Education, and Extension Service (CSREES) Grant no. USDA-AFRI 2013-02536; and by the Garden Club of America Centennial Pollinator Fellowship (ECPY).

*The funders had no role in study design, data collection and analysis, decision to publish, or preparation of the manuscript.*

**Competing interests:** No competing interests were disclosed.

**First published:** 21 Sep 2015, 4:880 (doi: [10.12688/f1000research.6870.1](https://doi.org/10.12688/f1000research.6870.1))

**REVISED** Amendments from Version 1

We have revised Version 1 in response to the Reviewers' comments, for which we are grateful. The major changes are as follows:

1. We altered the title to emphasize interactions between multiple secondary metabolites, and have given additional attention to this novel aspect in the introduction. In addition, we have renamed the 'Controlled' experiment to the 'Stable' experiment to avoid confusion with the alkaloid-free 'Control' nectar treatment, which was included in each experiment.
2. The revised version includes additional statistical analysis to clarify the effects of the alkaloids on mortality in the 'Stable' experiment. First, for the Cox proportional hazards model, we report death hazard ratios and confidence intervals comparing the 'Control' and 'Nicotine + Anabasine' treatment groups. Second, we report results of a binomial generalized linear mixed model in [Table S2](#), to allow direct comparison with the results of the 'Variable' experiment.
3. We added a paragraph to the discussion that contrasts our study with that of [Baracchi et al., 2015](#), and removed the first paragraph of the introduction.
4. We conducted an additional 'Consumption experiment', in which we measured nectar consumption at different temperatures. This experiment tested our hypothesis that temperature-induced increases in nectar consumption contributed to the stronger effects of alkaloids in the generally hot 'Variable' experiment. To our surprise, bees drank less than half of much artificial nectar at 33°C than at 27°C ([Figure 5](#), [Table 5](#)). We have accordingly removed speculation that high temperatures alone would have been sufficient to elevate alkaloid consumption. Instead, we recommend future experiments to clarify how the medicinal and toxic effects of secondary metabolites are shaped by interactions with other factors, including combination with other secondary metabolites, climatic and rearing conditions, host species, and parasite strain.

We thank the reviewers for their improvement of the article.

**See referee reports**

## Introduction

Throughout the past two decades, many wild and managed bee species have experienced severe declines ([Allen-Wardell et al., 1998](#); [Cameron et al., 2011](#); [Potts et al., 2010](#)). In many cases of bee decline, parasitism has been implicated as a potential cause (reviewed in [Goulson et al., 2015](#) and [Potts et al., 2010](#)). Secondary metabolites – plant compounds that do not play a role in the plant's primary metabolism – frequently have antimicrobial properties ([Schmidt et al., 2012](#)), and could offer a means of natural parasite control. Secondary metabolites are found in the floral nectar of many plant species ([Heil, 2011](#)).

The effects of secondary metabolites on insects, including bees and other pollinators, are context-dependent. A wide range of secondary metabolites, including terpenes, alkaloids, and phenolics, are toxic to insects ([Detzel & Wink, 1993](#); [Kumrungsee et al., 2014](#); [Raffa et al., 1985](#); [Singaravelan et al., 2006](#); [Wink & Theile, 2002](#)). Interaction with other stressors, such as infection or climatic stress, can exacerbate these toxic effects ([Goulson et al., 2015](#); [Holmstrup et al., 2010](#); [Köhler et al., 2012a](#)). However, under some circumstances, the antimicrobial properties of secondary metabolites can

provide health benefits to infected insects. Insects have been shown to self-medicate with secondary metabolites in response to parasite infection (reviewed in [Abbott, 2014](#)). For example, *Grammia incorrupta* (wooly bear) caterpillars exhibited self-medication behavior in response to tachinid fly parasitism by increasing their consumption of pyrrolizidine alkaloids, which decreased the survival of unparasitized caterpillars but increased the survival of parasitized caterpillars ([Singer et al., 2009](#)).

Several recent studies have indicated that plant secondary metabolites, including those found in nectar, can benefit infected pollinators as well. Honey bees self-medicated in response to parasitism through increased foraging for resins, which are used in hive construction and have antimicrobial properties ([Simone-Finstrom & Spivak, 2012](#)), and through preferentially feeding on certain types of honey, such as sunflower honey, which reduced pathogen load ([Gherman et al., 2014](#)). Bumble bees (*Bombus terrestris*) infected with the intestinal parasite *Crithidia bombi* displayed increased preference for nicotine-containing artificial nectar, which also reduced parasite load ([Baracchi et al., 2015](#)). In another bumble bee species (*B. impatiens*), consumption of the alkaloid gelsemine significantly reduced *C. bombi* infection intensity ([Manson et al., 2010](#)), and in a separate study, four other nectar secondary compounds had significant medicinal effects, with an additional four compounds causing non-significant decreases in infection severity ([Richardson et al., 2015a](#)).

Previous studies of the effects of nectar secondary metabolites on pollinators have focused primarily on single compounds in isolation. Under natural conditions, however, pollinators would likely encounter several compounds at once, since many plant species produce multiple secondary metabolites. For example, many *Nicotiana* species contain both nicotine and anabasine in nectar ([Adler et al., 2012](#)), and *Chelone glabra* contains the iridoid glycosides aucubin and catalpol in nectar ([Richardson et al., 2015b](#)). This raises the possibility of interactions between nectar secondary metabolites.

Synergistic interactions between secondary metabolites from other plant tissues are well established. Among herbivores, the iridoid glycosides aucubin and catalpol had synergistic effects on the survival of common buckeye (*Junonia coenia* Hübner) caterpillars that specialize on plants with these compounds; caterpillars that consumed both iridoid glycosides had an increased rate of survival relative to caterpillars that consumed either glycoside alone ([Richards et al., 2012](#)). Amides in plants in the *Piper* genus had synergistic deterrent effects on herbivorous ants, while the same compounds were neutral or attractive in isolation ([Dyer et al., 2003](#)). Synergy between secondary metabolites can also alter antimicrobial effects. Carvacrol and thymol, for example, inhibited the growth of the bacterium *Listeria innocua* more effectively in combination than alone ([García-García et al., 2011](#)). Carvacrol was also more effective against the bacterium *Vibrio cholerae* when combined with cymene, although cymene alone had no antimicrobial activity ([Rattanachaikunsopon & Phumkhaichorn, 2010](#)).

Antagonism between secondary metabolites has also been demonstrated. The deterrent effect of the amide piperine on the hemipteran *Sibaria englemanni* is significantly reduced when piperine

is combined with the amide piplartine, although piplartine alone had no effect on *S. englemanni* feeding preference (Whitehead & Bowers, 2014). The linear furanocoumarins psoralen, bergapten, and xanthotoxin exhibited antagonistic interactions in their effects on insect mortality; the toxicity of psoralen combined with either or both of the other two compounds was significantly lower than would be predicted based on their toxicities in isolation (Diawara *et al.*, 1993). If similar interactions, either synergistic or antagonistic, are present between secondary metabolites in nectar, they could exacerbate or ameliorate the effects of single compounds found in previous studies.

To evaluate interactions between secondary metabolites from the nectar of a single plant, we tested the effects of nicotine and anabasine alone and in combination on bumble bee resistance to the gut parasite *Crithidia bombi*. Nicotine and anabasine co-occur in the nectar of several species in the genus *Nicotiana*, which includes cultivated tobacco (*Nicotiana tabacum*) as well as several ornamental species (Adler *et al.*, 2012). The effects of nicotine and anabasine in combination on bee disease have not previously been studied. In addition, this is the first study to our knowledge that explicitly tests for interactive effects of multiple secondary compounds on bumble bee disease.

We tested the effects of these compounds in two environmental contexts, variable and controlled conditions. Bumble bees in the wild encounter a wide range of environmental conditions, which could alter the effects of diet and parasitism. In general, temperature can decrease tolerance to environmental toxins, including secondary metabolites (Holmstrup *et al.*, 2010), and exert unpredictable effects on insect-parasite interactions through modulation of host survival, host immune function, and parasite viability (Thomas & Blanford, 2003). Variable temperatures impose exceptional energetic costs on bumble bees by forcing them to actively regulate body temperature in order to fly (Heinrich, 1972). These costs might create caloric deficits that increase parasite virulence in *Bombus* (Brown *et al.*, 2000). Alternatively, heightened energy needs could lead to increased consumption of plant foods, thereby elevating exposure to secondary metabolites. Globally, responses to environmental variability have implications for conservation: Bumble bee species with narrow climatic ranges are particularly vulnerable to decline (Williams *et al.*, 2007; Williams *et al.*, 2009), and projected climate change may further restrict these species' distributions through increases in mean temperature and the frequency of extreme events (Difffenbaugh & Field, 2013).

## Methods

### Study system

*Bombus impatiens* is the most common bumble bee species in eastern North America, with a range extending from Ontario and Maine to southern Florida (Balaban *et al.*, 2014). It is an important pollinator in agriculture, and commercial distribution of *B. impatiens* is becoming increasingly common (Colla *et al.*, 2006).

*Crithidia bombi* is a common trypanosome parasite of bumble bees in Europe and North America (Colla *et al.*, 2006; Lipa & Triggiani, 1988). Its range has been expanding within North America and into parts of South America, potentially due to spillover from

commercial to wild bumble bee populations (Colla *et al.*, 2006; Schmid-Hempel *et al.*, 2014; but see Whitehorn *et al.*, 2013). *C. bombi* is known to increase mortality in bumble bees under food stress conditions (Brown *et al.*, 2000), and to reduce bumble bee foraging rate (Otterstatter & Thomson, 2006).

Nicotine is an agonist of the nicotinic acetylcholine receptor (nAChR), and therefore acts as both a stimulant drug and a toxin to many organisms (Benowitz, 1998). Nicotine is toxic to many insects, and has been historically used as an insecticide (Ujváry, 1999). Honey bees are deterred by nicotine in nectar (Köhler *et al.*, 2012b), and both honey bees (Köhler *et al.*, 2012b; Singaravelan *et al.*, 2006) and bumble bees (Baracchi *et al.*, 2015) are adversely affected by nicotine consumption when they are not infected by parasites. However, nicotine also has antimicrobial properties (Pavia *et al.*, 2000), and recent studies have suggested that it can reduce parasite load in bumble bees infected with *C. bombi* (Baracchi *et al.*, 2015; Richardson *et al.*, 2015a), and may improve survival of diseased honey bee colonies (Köhler *et al.*, 2012b). Anabasine, like nicotine, is a nAChR agonist, and has been used as an insecticide (MacBean, 2012). The behavioral effects of anabasine are similar to those of nicotine, although anabasine, unlike nicotine, does not have addictive effects (Caine *et al.*, 2014). Anabasine in nectar deterred honey bees (Singaravelan *et al.*, 2005), and reduced *C. bombi* load in infected bumble bees (Richardson *et al.*, 2015a).

### Secondary compound treatments

We inoculated bumble bees with *C. bombi*, and assessed the differences in pathogen load and mortality between adult bees fed nicotine (yes/no) and anabasine (yes/no) in a factorial design, resulting in four diet treatments: 2 ppm nicotine, 5 ppm anabasine, 2 ppm nicotine and 5 ppm anabasine together, or a control alkaloid-free solution. All diet treatments also contained 30% sucrose in distilled water. Chemicals ((-)-nicotine, cat. no. N3876; (+/-)-anabasine, cat. no. 284599) were purchased from Sigma-Aldrich (St. Louis, MO). Alkaloid concentrations were chosen to mimic the highest concentrations that would be found in *Nicotiana* nectar under natural conditions (Adler *et al.*, 2006; Tadmor-Melamed *et al.*, 2004).

### Rearing conditions

We conducted two experiments under different environmental conditions. The first experiment ('Variable', conducted 26 February 2014 to 20 March 2014, Dataset 1) had a smaller sample size ( $n = 178$  bees) and variable environmental conditions. In 'Variable', experimental bees and pupae were kept on the lab bench in a room where temperatures fluctuated between 10 and 35°C. This fluctuation was the result of a building steam leak. During most of the day-time when experimenters were present, the temperature was near 35°C, although on several weekends the heating system was shut down entirely for repairs, and temperatures as low as 10°C were reached. Bees in 'Variable' were also exposed to everyday stimuli and ambient fluorescent and window lighting (approximately 12 h photoperiod).

The second experiment ('Stable', conducted 20 May 2014 to 14 July 2014, Dataset 2) had a larger sample size ( $n = 339$  bees) and carefully controlled environmental conditions (see sample sizes in Table S1). In 'Stable', experimental bees as well as pupae were kept

in an incubator at 27°C in constant darkness to reduce mortality and more closely mimic conditions in a bumble bee hive.

Experimental bees were obtained from pupal clumps of commercial *B. impatiens* (Biobest, Leamington, Ontario, Canada). Pupal clumps were removed from colonies weekly and kept in 500 mL plastic containers, with each container containing the pupal clumps from a single colony that were collected on a specific date. In ‘Variable’, pupal clumps were incubated on the lab bench for the majority of the experiment until 2 d before the emergence of the final experimental bees, at which time the clumps were moved to a 30°C incubator (Percival Scientific, Perry, IA) due to excessive pre-experiment mortality under the variable lab conditions. Hence, all bees would have spent the majority of the pupation period under variable conditions. In ‘Stable’, pupal clumps were incubated at 27°C in darkness throughout the experiment. In both experiments, callow bees (newly emerged worker bees less than one day old) were collected upon emergence from pupal clumps. They were weighed and their mass at emergence, date of emergence, and colony of origin were recorded. Bees were then isolated in individual 20 mL vials. The lid of each vial was equipped with a 2 mL microcentrifuge tube with a cotton wick containing 500 µL artificial nectar (30% sucrose solution). Each day, bees were transferred to clean vials and given 500 µL fresh artificial nectar and a 10 mg piece of multifloral pollen (Koppert Biological Systems, Howell, MI) on which they fed *ad libitum*. For two days after emergence, bees were fed pollen and control nectar (30% sucrose solution), then were inoculated with *C. bombi*. They were starved for several hours to ensure that they would consume the inoculum, then fed 10 µL of *C. bombi* inoculum containing 6,000 *C. bombi* cells (see below). Following inoculation, bees were fed the appropriate nectar treatment and pollen *ad libitum* for 7 days. Bees were assigned systematically to secondary compound treatments in blocks of four, such that each block contained a bee in each treatment.

### Inoculation

To inoculate experimental bees, inoculum (*C. bombi* cells in sucrose solution) was prepared from the gut tracts of bees taken from colonies infected with *C. bombi*. These colonies were obtained from the same supplier as the experimental colonies, and were infected with *C. bombi* from wild bees collected in Amherst, Massachusetts (September 2013). Infected bees were dissected and their gut tracts were macerated with a plastic pestle in microcentrifuge tubes containing 300 µL distilled water. Samples were incubated for 5 hours at room temperature to allow gut tissue to settle. *C. bombi* cell density was then assessed using a hemocytometer, and inoculum was prepared from the supernatant of the samples with sufficient concentrations of *C. bombi* cells. The supernatant was diluted to a concentration of 1200 cells/µL and had an equal volume of 50% sucrose solution added to result in a 25% sucrose solution. Each bee was fed 10 µL of inoculum, containing 6,000 *C. bombi* cells, using a 20 µL micropipette.

### Bumble bee dissection and parasite quantification

Seven days after inoculation, bees were dissected to assess parasite loads. Gut tracts were extracted and crushed with a pestle in microcentrifuge tubes containing 300 µL distilled water. Samples were allowed to sit for 5 hours to allow gut tissue to settle.

*C. bombi* cell concentrations in the gut extract were measured using a hemocytometer. *C. bombi* cells were counted in five cells of the hemocytometer and summed (0.004 µL each; 0.02 µL total).

### Consumption experiment

To determine the effects of temperature on nectar consumption, we measured 24 h nectar consumption of bees incubated at 2 different temperatures, 27 or 33°C. Bees were removed from their natal colonies and starved in snap-cap vials 2 h before the experiment began. To begin the experiment, bees were given access to a 2 mL microcentrifuge feeding tube for 24 h. The feeding tube was filled with 1 mL artificial nectar (30% w/w sucrose) and punctured in the center of the lid with a 0.8 mm diameter sewing needle to allow bees access to the nectar. The upper half of the feeding tube was then inserted into a hole punched in the vial cap. Vials were incubated on their sides at a 10° angle in constant darkness. The feeding tube was weighed at the beginning and end of the 24 h experiment to estimate nectar consumption. The average mass loss of 6 control tubes, which were incubated identically in vials without bees, was subtracted from each bee’s estimated consumption to correct for leakage and evaporation. Bees were weighed post-experiment to allow use of bee mass as a model covariate. At each temperature, we ran 3 one-day trials of 24 bees (12 from each of 2 colonies), alternating between days of 27 and 33°C.

### Statistics

Data were analyzed using R version 3.2.1 for Windows (R Core Team, 2014).

### Mortality data

For ‘Variable’, for which exact dates of death were not recorded, mortality was analyzed using a generalized linear mixed model with binomial error distribution (Pinheiro *et al.*, 2015). Probability of death was used as the response variable with nicotine treatment, anabasine treatment, and their interaction as predictor variables. Bee colony was included as a fixed predictor, and date of inoculation was included as a random factor. Wald tests (Lesnoff & Lancelot, 2012) were used to test the marginal significance of individual predictor variables (see Supplementary material script 1). Mortality data for ‘Stable’, in which we recorded time from inoculation to death to the nearest day, were analyzed using a Cox proportional hazards mixed-effects model (Therneau, 2015). Death hazard rate was used as the response variable; nicotine, anabasine, and their interaction as predictor variables; colony as a fixed predictor; and date of inoculation as a random factor (see Supplementary material script 3). To facilitate direct comparison between results of ‘Variable’ and ‘Stable’, the results of ‘Stable’ were also analyzed with the same binomial mixed model used for the ‘Variable’ experiment.

### Parasite load

Parasite counts were found to best fit the log-normal distribution and were analyzed using generalized linear mixed models (Bates *et al.*, 2015) with penalized quasi-likelihood parameter estimation (Venables & Ripley, 2002). Parasite counts were (x+1)-transformed for use as the response variable. Nicotine, anabasine, and their interaction were used as predictor variables. Bee colony was included as a fixed predictor, mass (at emergence from pupations) as a model covariate, and date of inoculation as a random

factor. Marginal significance of individual terms was evaluated using Wald tests (Lesnoff & Lancelot, 2012). Code for analysis is given in [Supplementary material script 2](#) ('Variable' experiment) and [Supplementary material script 4](#) ('Stable' experiment).

### Consumption experiment

Nectar consumption was analyzed using an analysis of variance with 24 h net nectar consumption as the response variable, temperature and colony as fixed predictors, and bee mass as a covariate. We excluded bees that died during the 24 h trial.

## Results

### Dataset 1. Data for 'Variable' experiment

[10.5256/f1000research.6870.d101937](https://doi.org/10.5256/f1000research.6870.d101937)

Abbreviations: bee.ID—unique number assigned to each experimental bee; source.colony—colony of origin; treatment—letter corresponding to one of four diet treatments: "C" = control, "N" = nicotine (2 ppm), "A" = anabasine (5 ppm), "together" = nicotine (2 ppm) with anabasine (5 ppm); Nicotine.treatment—binary variable for diet treatment indicating "0" for no nicotine or "1" for 2 ppm nicotine; Anabasine.treatment—binary variable for diet treatment indicating "0" for no anabasine or "1" for 5 ppm anabasine; mass—mass of bee at time of emergence from pupal clump; inoculation.date—date of inoculation; inoculated—binary variable indicating whether bee was successfully inoculated ("1") or not ("0"); dead.before.dissection—binary variable indicating whether bee died ("1") or survived ("0") until the time of dissection at 7 days; dissection.count—number of *C. bombi* cells counted in 0.02  $\mu$ L gut extract.

### Dataset 2. Data for 'Stable' experiment

[10.5256/f1000research.6870.d101940](https://doi.org/10.5256/f1000research.6870.d101940)

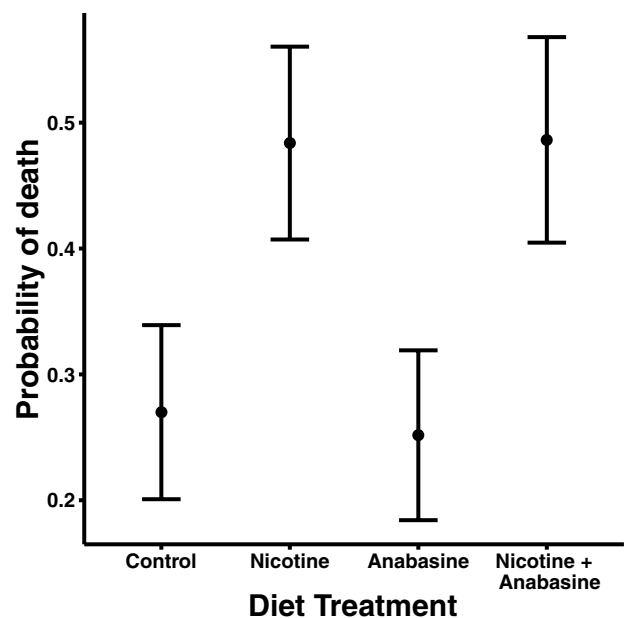
Abbreviations: bee—unique number assigned to each experimental bee; colony—colony of origin; treatment—describes one of four diet treatments: "Control" = control; "Nicotine" = nicotine (2 ppm), "Anabasine" = anabasine (5 ppm), "Nic + Ana" = nicotine (2 ppm) with anabasine (5 ppm); Inoc.Date—date of inoculation; Nicotine—column denoting whether nectar treatment contained ("Yes") or did not contain ("No") 2 ppm nicotine; Anabasine—column denoting whether nectar treatment contained ("Yes") or did not contain ("No") 5 ppm anabasine; nicotine—binary variable for diet treatment indicating "0" for no nicotine or "1" for 2 ppm nicotine; anabasine—binary variable for diet treatment indicating "0" for no anabasine or "1" for 5 ppm anabasine; mass—mass of bee at time of emergence from pupal clump; Time.To.Death—number of days from inoculation to death, with negative numbers denoting excluded bees that died before inoculation or escaped before dissection; Dead.Binary—binary variable indicating whether bee died ("1") or survived ("0") until the time of dissection at 7 days; count—number of *C. bombi* cells counted in 0.02  $\mu$ L gut extract.

### 'Variable'

In variable temperature conditions, the nicotine treatment significantly increased mortality (Table 1). Nearly half of bees fed nicotine-containing nectar died within 7 days of inoculation, which was nearly double the frequency of death in treatments without nicotine (Figure 1). Anabasine did not affect mortality, and there was no significant interaction between the two alkaloid treatments (Figure 1, Table 1).

**Table 1. Effects of nicotine and anabasine consumption on mortality in 'Variable' experiment.** Table shows binomial mixed model results of  $\chi^2$  tests for effects of predictor variables on probability of death during the 7 d experiment.

Source	$\chi^2$	Df	P
Nicotine	4.1749	1	0.041
Anabasine	0.0374	1	0.85
Nicotine*Anabasine	0.0256	1	0.87
Colony	0.911	4	0.92

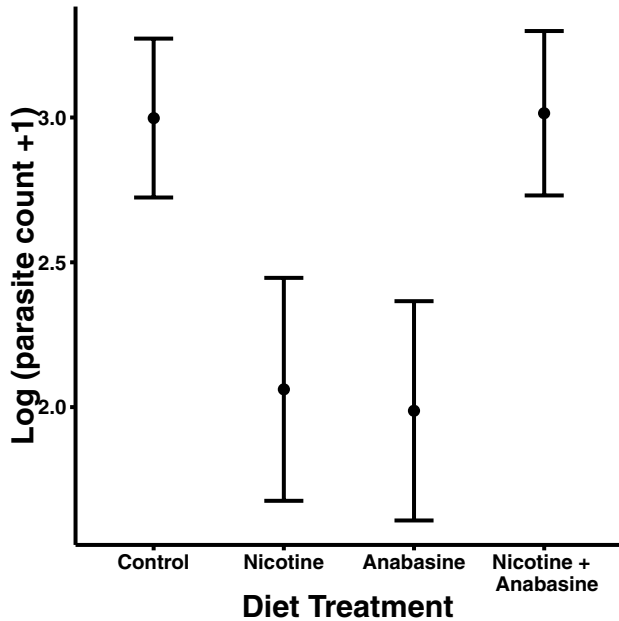


**Figure 1. Effects of nicotine and anabasine on mortality in 'Variable' experiment.** Points show adjusted mean probability of death in each treatment group. Error bars represent  $\pm 1$  standard error. Sample sizes: n=45 (Control), n=46 (Nicotine), n=46 (Anabasine), n=41 (Nicotine + Anabasine).

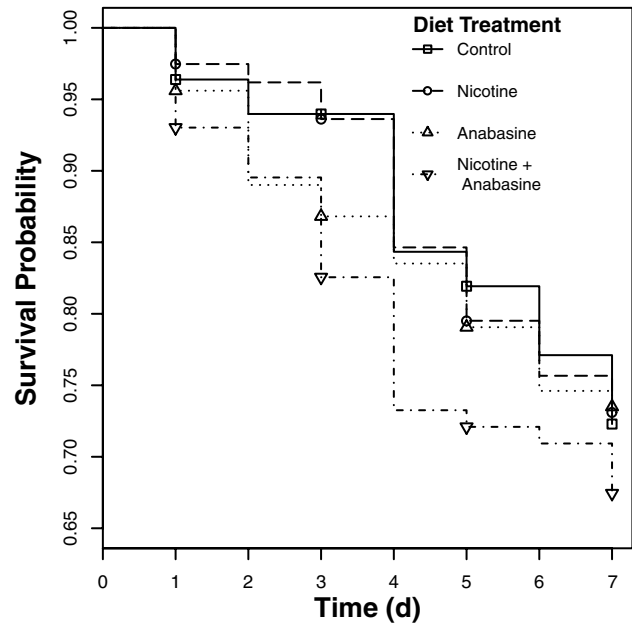
Nicotine (linear model  $\beta = -1.01 \pm 0.295$  standard error) and anabasine ( $\beta = -0.94 \pm 0.31$  S.E.) each significantly decreased parasite loads. However, nicotine and anabasine displayed antagonistic effects (Nicotine \* Anabasine  $\beta = 1.96 \pm 0.44$  S.E.), such that bees consuming both alkaloids did not realize the medicinal effects of either compound (Figure 2, Table 2). Parasite load had a significant negative relationship with bee mass ( $\beta = -11.17 \pm 3.60$  S.E., Table 2), indicating that larger bees had lower parasite loads after controlling for other factors.

### 'Stable'

Under controlled conditions (27°C with constant darkness), neither alkaloid nor their interaction significantly affected mortality



**Figure 2.** Effects of nicotine and anabasine on parasite load in ‘Variable’ experiment. Points show adjusted mean parasite count in each treatment group. Error bars represent  $\pm 1$  standard error. Sample sizes: n=31 (Control), n=24 (Nicotine), n=33 (Anabasine), n=20 (Nicotine + Anabasine).



**Figure 3.** Effects of nicotine and anabasine on mortality in ‘Stable’ experiment. Lines show survival curves for bees each treatment group. There were no significant effects of diet treatments on survival. Sample sizes: n=83 (Control), n=79 (Nicotine), n=91 (Anabasine), n=86 (Nicotine + Anabasine).

**Table 2.** Effects of nicotine and anabasine on parasite loads in ‘Variable’ experiment. Results of Wald tests for marginal significance of terms in a generalized linear mixed model with penalized quasi-likelihood parameter estimation. ‘Mass’ refers to bee mass at time of emergence.

Source	$\chi^2$	Df	P
Nicotine	10.054	1	0.0025
Anabasine	12.843	1	<0.001
Nicotine*Anabasine	22.045	1	<0.001
Colony	15.48	4	0.0038
Mass	10.517	1	0.0012

**Table 3.** Effects of nicotine and anabasine consumption on mortality in ‘Stable’ experiment. Table shows marginal significance of individual terms in Cox proportional hazards test for effects of predictor variables on mortality hazard rate.

Source	$\chi^2$	Df	P
Nicotine	0.14	1	0.71
Anabasine	0.21	1	0.65
Nicotine*Anabasine	0.19	1	0.66
Colony	7.6	3	0.054

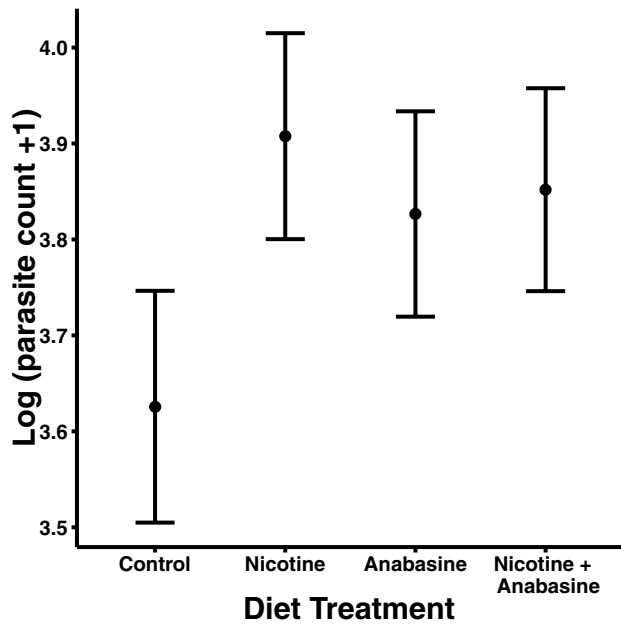
(Figure 3, Table 3, Table S2). Although the death hazard ratio was lowest in the Control group (estimate = 0.82, 95% CI = (0.56, 1.19)) and highest in the group that received both alkaloids (estimate = 1.19, 95% CI = (0.90, 1.78)), this difference did not approach statistical significance (pairwise comparison:  $z = 1.49$ ,  $P = 0.45$ ). However, nicotine significantly increased parasite loads ( $\beta = 0.28 \pm 0.12$  S.E., Table 4), while the effects of anabasine ( $\beta = 0.20 \pm 0.12$  S.E.) were also positive but not significant (Figure 4, Table 4). This was the opposite result of that observed in ‘Variable’, in which alkaloid ingestion decreased the severity of *Crithidia* infection. Although much weaker than in ‘Variable’, we found the same pattern of antagonistic interaction between the two alkaloids (Nicotine \* Anabasine  $\beta = -0.26 \pm 0.16$  S.E., Figure 4), indicating that the

deleterious effects of each compound were reduced in bees consuming the nicotine + anabasine combination (Figure 4). However, this interaction was not statistically significant (Table 4). Overall parasite loads in ‘Stable’ were much higher, with median parasite counts ( $37.5 \text{ cells} * 0.02 \mu\text{L}^{-1}$ ) more than triple those observed in ‘Variable’ ( $11.0 \text{ cells} * 0.02 \mu\text{L}^{-1}$ ). As in ‘Variable’, there was a significant negative relationship between mass at emergence and parasite count ( $\beta = -3.41 \pm 1.32$  S.E., Table 4). Average bee mass in ‘Stable’ (121 mg) was significantly lower than in ‘Variable’ (160 mg) ( $t(290) = -9.17$ ,  $P < 0.001$ ), possibly reflecting elevated pre-experiment mortality of smaller bees under the fluctuating conditions of ‘Variable’. These bees might have been more likely to die during pupation or prior to inoculation.



**Table 4. Effects of nicotine and anabasine on parasite loads in ‘Stable’ experiment.** Results of Wald tests for marginal significance of terms in a generalized linear mixed model with penalized quasi-likelihood parameter estimation. “Mass” refers to bee mass at time of emergence.

Source	$\chi^2$	Df	P
Nicotine	5.84	1	0.026
Anabasine	2.78	1	0.095
Nicotine*Anabasine	2.59	1	0.11
Colony	6.76	3	0.080
Mass	6.91	1	0.0086



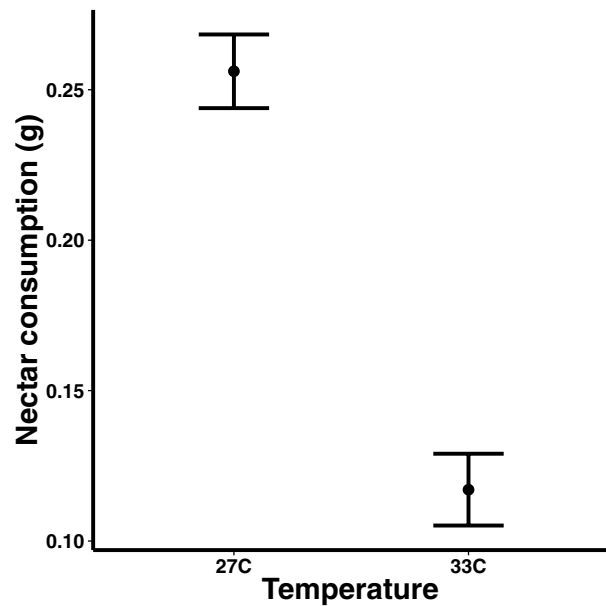
**Figure 4. Effects of nicotine and anabasine on parasite load in ‘Stable’ experiment.** Points show adjusted mean parasite count in each treatment group. Error bars represent  $\pm 1$  standard error. Sample sizes: n=60 (Control), n=59 (Nicotine), n=66 (Anabasine), n=61 (Nicotine + Anabasine).

### Consumption experiment

Contrary to our expectation that increased temperature would increase nectar consumption, bees drank significantly less when incubated at 33°C than at 27°C (Table 5). Mass-adjusted mean consumption at 33°C (117 mg) was less than half that at 27°C (256 mg) (Figure 5). Bee mass was also a significant predictor of consumption, but colony of origin was not (Table 5).

**Table 5. Anova results for effects of incubation temperature on nectar consumption at 27°C and 33°C.**

Source	SS	Df	F	P
Temperature	0.64	1	64.04	<0.001
Colony	0.01	1	0.98	0.33
Mass	0.24	1	23.61	<0.001
Residuals	1.38	138		



**Figure 5. Effects of incubation temperature on nectar consumption in uninfected bees.** Points show adjusted mean nectar consumption at each incubation temperature. Error bars represent  $\pm 1$  standard error. Sample sizes: n=69 (27°C), n=74 (33°C).

### Dataset 3. Data for Consumption experiment

<http://dx.doi.org/10.5256/f1000research.6870.d109062>

Day ‘One’ was omitted from analysis due to use of a different style of feeder tube from that used on subsequent days. Abbreviations: Day: day of experiment; Temp: temperature of incubator; Colony: hive of origin; Vial: unique identifier for each sample; Type: “Bee” or evaporation “Control” (i.e., empty vial without a bee); Date: Date of start of trial; Start.time: time at start of trial; Lid.mass.0h: mass of full tube with nectar at start of trial; comment.0h: observations at start time; End.time: clock time on following day at end of trial; Lid.mass.24h: mass of nectar tube after 24h of bee feeding; Bee.mass: mass of bee following the trial; comment.24h: observations at end of trial; consumption.gross: Difference between Lid.mass.0h and Lid.mass.24h; consumption.net: consumption.gross minus average mass loss of bee-free control tubes on same date, which estimates amount of nectar consumed. Incubator: location of trial.

## Discussion

### Nicotine increased mortality under variable temperature conditions

Nicotine consumption increased mortality in ‘Variable’, but did not affect mortality in ‘Stable’. The climatic differences between the two experiments may be responsible for this context-dependent response. In ‘Variable’, the incubation temperature of the experimental bees was not controlled: Experimental bees, pupal clumps, and colonies were kept in a room with temperatures that ranged from 10 to 35°C, with the temperature usually at the high end of that range during the day. The stressful nature of the conditions was evidenced the overall higher masses of bees in ‘Variable’, which we believe reflects pre-experiment mortality of many smaller and weaker bees. In ‘Stable’, by contrast, bees were incubated at a constant temperature of 27°C.

We hypothesize that the toxic effects of nicotine in the ‘Variable’ experiment may have been exacerbated by exposure to heat and fluctuating temperatures. Interaction between heat stress and secondary metabolites has been documented in several other species (reviewed in [Holmstrup et al., 2010](#)), including some insects and related arthropods. For example, [Li et al. \(2014\)](#) found synergistic interaction between heat stress and avermectin toxicity in the western flower thrips (*Frankliniella occidentalis*), which led to reduced survival and increased upregulation of heat shock proteins. Mercury exposure reduced heat tolerance in springtails (*Folmsia candidia*) ([Slotsbo et al., 2009](#)), and high temperature increased uptake and toxicity of organophosphate insecticides to the midge *Chironomus tentans* ([Lydy et al., 1999](#)). Our results suggest that interaction between heat stress and toxins may occur in *B. impatiens* as well. An experiment in which temperature and secondary metabolite consumption are manipulated in a factorial design would more definitively test for such interaction.

Our results indicate that nicotine can be toxic to bumble bees even at very low concentrations when bees are parasitized. Another recent study ([Baracchi et al., 2015](#)) also found that chronic consumption of low concentrations (2.5 ppm) of nicotine increased mortality in uninfected *B. terrestris*, although not in those infected with *Crithidia*. These findings contrast with previous studies of honey bees, which did not find significant effects of naturally occurring nicotine concentrations on mortality in bees of unknown parasite status. [Detzel & Wink \(1993\)](#) determined the honey bee LD<sub>50</sub> for nicotine to be 2000 ppm, far higher than any concentration that occurs in nectar. [Singaravelan et al. \(2006\)](#) found that larval survival of honey bees was not affected by naturally occurring concentrations of nicotine (up to 5 ppm), even when consumed consistently for several days, although a much higher concentration of nicotine (50 ppm) did significantly reduce survival. The discrepancy between their results and ours may be due to bumble bees having a greater sensitivity to nicotine than do honey bees. Further study is needed to compare the tolerance of a range of pollinator species to secondary metabolites consumed alone and in combination.

Nicotine had stronger effects on mortality in the ‘Variable’ than in the ‘Stable’ experiment. This result suggests that sensitivity of bumble bees to nicotine is further increased under temperature-stressed conditions that are nonetheless realistic in many habitats. Drastic

temperature variation similar to that experienced by bees in ‘Variable’ is common in continental climates, where bumble bees are abundant. For example, in Amherst, MA, where this study was conducted, daily temperature swings of over 15°C are common, and temperatures as low as 10°C and as high as 30°C are frequently experienced within a few days of each other, or even within a single day ([Menne et al., 2012a](#); [Menne et al., 2012b](#)). Wild bees, therefore, are likely to experience temperature conditions under which nicotine could be significantly toxic.

### Under variable temperature conditions, nicotine and anabasine—but not their combination—decreased infection

To our surprise, the ‘Variable’ conditions under which nicotine consumption increased mortality were also the conditions under which alkaloid consumption reduced parasitism. In ‘Variable’, bees that consumed either alkaloid alone had significantly lower parasite counts than control bees; in contrast, bees that consumed both alkaloids had similar parasite counts to controls. Our results are consistent with the results of recent studies that found reduced parasite loads under nicotine and anabasine consumption ([Baracchi et al., 2015](#); [Richardson et al., 2015a](#)). The reduction in parasite load may be due to alkaloid-induced increases in gut motility. Both nicotine and anabasine have been demonstrated to reduce gut transit time in the Palestinian sunbird *Nectarinia osea* ([Tadmor-Melamed et al., 2004](#)). Although their effect on gut transit time in insects has not been studied, rapid excretion is known to be part of some insects’ physiological response to alkaloids ([Wink & Theile, 2002](#)). It is therefore plausible that consumption of nicotine and anabasine could cause an increased rate of excretion in bees, thus clearing *C. bombi* cells from the gut and leading to the observed reduction in parasite load.

The lack of effect of the combined alkaloids on parasite load is more puzzling. The concentrations of the individual alkaloids may have been within the medicinal window of concentration at which antiparasitic effects were dominant. However, the combined effects of both alkaloids may have weakened bees’ ability to fight infection through excessive stimulatory, laxative, and/or immunosuppressive effects. These combined toxic effects could have offset the medicinal effects realized at lower concentrations in the single-alkaloid treatments.

### In a controlled temperature environment, nicotine increased parasite loads without affecting mortality

When bees were kept under constant conditions in ‘Stable’, alkaloid ingestion had different effects on mortality and parasitism from those found in ‘Variable’. In contrast with the antiparasitic effects of alkaloids in ‘Variable’, in ‘Stable’, nicotine consumption significantly increased parasite counts, while anabasine also increased parasite loads, although not significantly. This result is consistent with a growing body of research demonstrating that neonicotinoids, a class of insecticides chemically similar to nicotine, have immunosuppressant effects on bees (reviewed in [Goulson et al., 2015](#)). While the effects of nicotine are not necessarily the same as those of neonicotinoids, both nicotine and neonicotinoids function as nAChR agonists, ([Jeschke et al., 2011](#)), suggesting similar pharmacological activity.

The immunosuppressant effects of neonicotinoids have been most well studied in honey bees. Under lab conditions, sub-lethal colony-level exposure to imidacloprid increased levels of *Nosema* infection (Pettis *et al.*, 2012). In the field, colonies that had foraged on corn treated with thiabendazole had significantly elevated levels of black queen cell virus and *Varroa* mites (Alburaki *et al.*, 2015). At the molecular level, clothianidin and imidacloprid induced increased transcription of a gene coding for a negative modulator of NF- $\kappa$ B immune signaling in honey bees, causing decreased immune function and increased viral replication (Di Prisco *et al.*, 2013). Additional studies on bumble bees are needed to compare the effects of neonicotinoids and naturally occurring alkaloids, as well as to evaluate how the effects of these compounds vary across species, genera, and dietary contexts.

### Interactive effects of abiotic conditions, alkaloids, and parasites on bees

We hypothesized that the stronger medicinal and toxic effects of the alkaloids in ‘Variable’ may have resulted from increased total alkaloid consumption due to elevated nectar intake under the generally hotter conditions of ‘Variable’. However, our Consumption experiment showed that increasing incubator temperature from that used in ‘Stable’ (27°C) to one characteristic of ‘Variable’ (33°C) significantly *decreased* the volume of nectar consumed. Hence, it appears that the warmer temperatures of ‘Variable’ would have curtailed nectar consumption rather than promoting it. Still, we cannot exclude the possibility that warmth-related decreases in consumption would have been offset by other factors that promoted nectar intake, including increased activity, energy expenditure, and stress-related defecation in the comparatively stimulating experimental environment. In addition, the Consumption experiment used uninfected bees, whereas bees in both ‘Variable’ and ‘Stable’ were inoculated with parasites. Further investigation is needed to define how the thermal environment, external stimuli, nectar alkaloid content, and infection interact to influence patterns of consumption.

The stronger effects of alkaloids in ‘Variable’ may therefore reflect complex interactions between alkaloids, temperature stress, environmental stimuli, and immunity rather than simple differences in alkaloid consumption. Under the fluctuating conditions of ‘Variable’, bees may have been more susceptible to the effects of the alkaloids, both in the form of increased toxicity and increased gut motility, accounting for both the higher mortality and decreased *C. bombi* counts in ‘Variable’. For example, the hot conditions of ‘Variable’ would appear to have increased evaporative moisture losses while decreasing nectar intake, leaving bees more susceptible to dehydration. Nicotine’s agonistic effects on intestinal peristalsis may have helped to clear parasites from the gut, but also have contributed to further dehydration. In addition, bees in ‘Variable’ were exposed to external stimuli in the lab environment, including light and vibration, which may have synergized with stimulatory effects of the alkaloids to increase defecation. In the lab, bees often defecate explosively when startled—sometimes tens of centimeters into the air (ECPY, personal observation). Bees on the lab bench in ‘Variable’ would have been agitated more frequently than bees in the incubator in ‘Stable’, and their sensitivity to agitation may have been increased by alkaloid consumption.

The higher temperatures of ‘Variable’ may have additionally functioned as an externally imposed fever that reversed the immunosuppressive effects of nicotine. Febrile amelioration of infection has been shown in many animals (reviewed in Kluger, 1978), including honey bees (Campbell *et al.*, 2010) and other insects (Stahlschmidt & Adamo, 2013). The lower absolute parasite counts relative to ‘Stable’ may reflect heat-related inhibition of *C. bombi*, which grows best at 27°C (Salathé *et al.*, 2012). Stimulatory effects of nicotine and anabasine, enhanced by exposure to everyday disturbance in ‘Variable’, could have increased activity level and metabolic rate, thereby further raising body temperature and slowing parasite growth, albeit at the expense of increasing heat stress on bees. The effects of a given increase in body temperature would have been more pronounced under the hot conditions of ‘Variable’, which may have approached the parasite’s thermal tolerance limit.

Our results in ‘Stable’ contrast with those of a recent study (Baracchi *et al.*, 2015), which showed that nicotine consumption reduced parasite loads in *Bombus*. There were a number of differences between that study and ours that may explain the differing results. First, the two experiments used different bee species: Baracchi and colleagues used the larger *B. terrestris*, which may be more resistant to potential immunosuppressive effects of nicotine. Even within our experiments, which used bees of a single species from a single supplier, we found highly significant effects of mass and colony, indicating strong effects of both size and genetic variation on parasitism that are consistent with previous findings (Otterstatter & Thompson, 2006). Interspecific variability could be tested by comparing effects of secondary metabolites on parasitism in a range of *Bombus* species. Second, Baracchi *et al.* employed different bee housing materials. Bees were housed in petri dishes, which may have been less confining than our snap-cap vials, as suggested by the overall lower rates of mortality in the experiments of Baracchi *et al.* compared to ours. This extra space could have allowed bees to take advantage of alkaloid-induced increases in gut motility by expelling *Crithidia*-rich feces in less-frequented parts of their arenas, whereas our bees would have had close and persistent contact with their own waste. It would be intriguing to investigate how the effects of alkaloids differ depending on levels of crowding, including in densely populated hive environments. A third explanation could be that the antiparasitic effects of alkaloids depend on other environmental cues, including daylight. Both our study and that of Baracchi *et al.* showed medicinal effects of nicotine when bees were housed on the lab bench (as in ‘Variable’), whereas nicotine increased parasitism for bees housed in constant darkness in ‘Stable’. Future experiments are needed to explicitly test the roles of environmental conditions and stimuli on bee and parasite tolerance to alkaloids.

Our results also contrast with those of Richardson *et al.* (2015a), which employed the same bee species and unlit rearing conditions as our ‘Stable’ experiment, but found that both nicotine and anabasine significantly reduced *C. bombi* parasite load in *B. impatiens*. The differing effects of nicotine may be due to our use of the (-)-enantiomer of nicotine, whereas Richardson *et al.* (2015a) used a +/- enantiomeric mixture (Sigma N0267, personal communications). (-)-Nicotine, which is far more common in nature (Armstrong *et al.*,

1998), appears to be more pharmacologically active than (+)-nicotine in vertebrates, aquatic invertebrates (Barlow & Hamilton, 1965; Gause & Smaragdova, 1939), and insects including honey bees (Tomizawa & Yamamoto, 1992). Interestingly, Gause & Smaragdova (1939) found the two enantiomers to be isotoxic to protozoa. If (-)-nicotine is more toxic to bees than is (+)-nicotine, but both enantiomers are equally toxic to *C. bombi*, then (-)-nicotine might have lesser medicinal value.

Another possible explanation for our differing results relates to the *C. bombi* itself. *C. bombi* is known to be genetically diverse; Salathé & Schmid-Hempel (2011) identified 213 strains infecting bumble bees in Switzerland. Multiple strains are often present in a single host. Tognazzo *et al.* (2012) found that 67% of infected workers and 54% of infected queens carried mixed-genotype infections, with queens harboring up to 29 different genotypes. In addition, it is possible that not all supposed *C. bombi* infections in fact represent a single *Crithidia* species. Schmid-Hempel & Tognazzo (2010) identified two genetically and morphologically distinct lineages within the *C. bombi* complex, which they classified as cryptic species. They retained the name *C. bombi* for the lineage which more closely matches Lipa & Triggiani's (1988) original description of *C. bombi*, and proposed the name *C. expoeki* for the other lineage. Both lineages are present in both Europe and North America, suggesting an old divergence. If our *C. bombi* cultures and those used by Richardson *et al.* (2015a) and Baracchi *et al.*, (2015) represent different strains, or different species, it is possible that they vary in alkaloid tolerance. In addition, these strains might vary in virulence and pathogenicity. The medicinal effects of alkaloids in 'Variable', where absolute parasite loads were lower overall, suggests that alkaloid ingestion might be most therapeutic against relatively mild infections.

### Implications of secondary metabolites for pollinator health in a changing landscape

Our results represent an important first step towards understanding the interactive effects of multiple secondary metabolites on pollinators. We did not find evidence for synergy between *Nicotiana* nectar alkaloids, although we did find some evidence for antagonism. To elucidate the potential role of interactions between compounds in the plant-pollinator-parasite system, it will be necessary to test for interactions between other sets of compounds. Within *Nicotiana*, the wild tobacco *N. attenuata* contains at least 35 nectar secondary compounds, including sesquiterpenes (Kessler & Baldwin, 2007); many terpenoids have potent trypanocidal activity, yet are relatively benign to animal cells (Otoguro *et al.*, 2011). Among other plant families, *Asclepias* species are pollinated by bumble bees and contain several cardenolides in their nectar (Manson *et al.*, 2012) that could be tested for interactive effects. Another plant species to investigate is *Chelone glabra*, which has high concentrations of the iridoid glycosides aucubin and catalpol in its nectar (Richardson *et al.*, 2015b). Synergy between these glycosides has been demonstrated in their effect on *Junonia coenia* caterpillars (Richards *et al.*, 2012).

Overall, the effects of nectar alkaloids on parasitized pollinators may represent a tradeoff between toxicity to the parasite and

toxicity to the host. In the case of nicotine, bees appear to be more sensitive to alkaloid toxicity than parasites are. While nicotine inhibits the growth of many microbial pathogens, significant antimicrobial effects require concentrations between 100 and 250 ppm (Pavia *et al.*, 2000). By contrast, Singaravelan *et al.* (2006) found that nicotine was toxic to bees at 50 ppm, and our own results suggest that nicotine can have toxic effects at concentrations as low as 2 ppm. However, the studies establishing toxicity of nicotine in bees have all focused on chronic consumption of a diet high in nicotine. In nature, bumble bees are generalist pollinators, and are known to forage on several plant species within a narrow time frame and even within a single foraging trip (Free, 1970). In landscapes with varied floral resources, they might be able to avoid chronic nicotine toxicity by exploiting a range of plant species.

### Conclusion

Our results emphasize the importance of interactions between stressors in pollinator health, and demonstrate that the effect of any single factor can vary greatly depending on the other factors involved. Research on pollinator health often focuses on single factors in isolation; however, in natural conditions, pollinators are often exposed to several stressors simultaneously (Goulson *et al.*, 2015). Previous research has demonstrated both medicinal and toxic effects of secondary metabolites such as nicotine and anabasine. Our results suggest that the predominant effect can vary with environmental and dietary context. In order to better elucidate the role of secondary metabolites in pollinator health, future research should explicitly address the role of these complex interactions.

### Data availability

F1000Research: Dataset 1. Data for 'Variable' experiment, 10.5256/f1000research.6870.d101937 (Thorburn *et al.*, 2015a).

F1000Research: Dataset 2. Data for 'Stable' experiment, 10.5256/f1000research.6870.d101940 (Thorburn *et al.*, 2015b).

F1000Research: Dataset 3. Data for Consumption experiment, 10.5256/f1000research.6870.d109062 (Thorburn *et al.*, 2015c).

### Author contributions

All authors conceived the study. ECPY and LPT designed and conducted the experiments using methods developed by REI. ECPY analyzed the data. LPT and ECPY prepared the first draft of the manuscript. All authors revised the manuscript and have agreed upon the final content.

### Competing interests

No competing interests were disclosed.

### Grant information

This research was funded by the National Science Foundation under NSFDEB-1258096, NSF GRFP (Grant DGE-0907995 to ECPY), and NSF DDIG (Grant NSFDEB-1501907 to ECPY and LSA); by the National Research Initiative (NRI) Arthropod and Nematode Biology and Management Program of the USDA Cooperative State

Research, Education, and Extension Service (CSREES) Grant no. USDA-AFRI 2013-02536; and by the Garden Club of America Centennial Pollinator Fellowship (ECPY).

*I confirm that the funders had no role in study design, data collection and analysis, decision to publish, or preparation of the manuscript.*

## Acknowledgments

The authors are grateful to Biobest for supplying bee colonies; and to Ali Hogeboom, Melissa Ha, Caitlin McAllister, and lab assistants for help with ‘Stable’ experiment. We thank our reviewers Drs David Baracchi, Michael Simone-Finstrom, and Margarita Lopez-Urbe for their improvement of the paper.

## Supplementary material

Script 1. R script for analysis of *C. bombi* parasite loads in ‘Variable’ experiment.

[Click here to access the data.](#)

<http://dx.doi.org/10.5256/f1000research.6870.s101933>

Script 2. R script for analysis of mortality in ‘Variable’ experiment.

[Click here to access the data.](#)

<http://dx.doi.org/10.5256/f1000research.6870.s101934>

Script 3. R script for analysis of *C. bombi* parasite loads in ‘Stable’ experiment.

[Click here to access the data.](#)

<http://dx.doi.org/10.5256/f1000research.6870.s101935>

Script 4. R script for analysis of mortality in ‘Stable’ experiment.

[Click here to access the data.](#)

<http://dx.doi.org/10.5256/f1000research.6870.s101936>

Script 5. R script for analysis of ‘Consumption experiment’.

[Click here to access the data.](#)

<http://dx.doi.org/10.5256/f1000research.6870.s109063>

**Table S1. Sample sizes for the 2 experiments, ‘Variable’ and ‘Stable’.**

Treatment	Experiment	
	Variable	Stable
Control	45	83
Nicotine	46	79
Anabasine	46	91
Nicotine + Anabasine	41	86
Total	178	339

**Table S2. GLMM for effects of nicotine and anabasine consumption on mortality in ‘Stable’ experiment.** Table shows binomial mixed model results of  $\chi^2$  tests for effects of predictor variables on probability of death during the 7 d experiment.

Source	$\chi^2$	Df	P
Nicotine	0.117	1	0.7323
Anabasine	0.0444	1	0.8331
Nicotine*Anabasine	0.5456	1	0.4601
Colony	6.8536	3	0.0767

## References

- Abbott J: **Self-medication in insects: current evidence and future perspectives.** *Ecol Entomol.* 2014; **39**(3): 273–280.  
[Publisher Full Text](#)
- Adler LS, Seifert MG, Wink M, *et al.*: **Reliance on pollinators predicts defensive chemistry across tobacco species.** *Ecol Lett.* 2012; **15**(10): 1140–1148.  
[PubMed Abstract](#) | [Publisher Full Text](#)
- Adler LS, Wink M, Distl M, *et al.*: **Leaf herbivory and nutrients increase nectar alkaloids.** *Ecol Lett.* 2006; **9**(8): 960–967.  
[PubMed Abstract](#) | [Publisher Full Text](#)
- Alburaki M, Boutin S, Mercier PL, *et al.*: **Neonicotinoid-Coated *Zea mays* Seeds Indirectly Affect Honeybee Performance and Pathogen Susceptibility in Field Trials.** *PLoS One.* 2015; **10**(5): e0125790.  
[PubMed Abstract](#) | [Publisher Full Text](#) | [Free Full Text](#)
- Allen-Wardell G, Bernhardt P, Bitner R, *et al.*: **The potential consequences of pollinator declines on the conservation of biodiversity and stability of food crop yields.** *Conserv Biol.* 1998; **12**(1): 8–17.  
[Publisher Full Text](#)
- Armstrong DW, Wang X, Ercal N: **Enantiomeric composition of nicotine in smokeless tobacco, medicinal products, and commercial reagents.** *Chirality.* 1998; **10**(7): 587–591.  
[Publisher Full Text](#)
- Balaban J, Balaban J, Moisset B, *et al.*: **Species *Bombus impatiens* - common eastern bumble bee.** 2014.  
[Reference Source](#)
- Baracchi D, Brown MJF, Chittka L: **Behavioural evidence for self-medication in bumblebees? [version 2; referees: 3 approved].** *F1000Res.* 2015; **4**: 73.  
[Publisher Full Text](#)
- Barlow RB, Hamilton JT: **The stereospecificity of nicotine.** *Br J Pharmacol Chemother.* 1965; **25**(1): 206–212.  
[PubMed Abstract](#) | [Publisher Full Text](#) | [Free Full Text](#)
- Bates D, Maechler M, Bolker B, *et al.*: **R package {lme4}: Linear mixed-effects models using Eigen and {S4}.** 2015.  
[Reference Source](#)
- Benowitz NL: **Nicotine safety and toxicity.** Oxford University Press, New York. 1998.  
[Reference Source](#)
- Brown MJF, Loosli R, Schmid-Hempel P: **Condition-dependent expression of virulence in a trypanosome infecting bumblebees.** *Oikos.* 2000; **91**(3): 421–427.  
[Publisher Full Text](#)
- Caine SB, Collins GT, Thomsen M, *et al.*: **Nicotine-like behavioral effects of the minor tobacco alkaloids nornicotine, anabasine, and anatabine in male rodents.** *Exp Clin Psychopharmacol.* 2014; **22**(1): 9–22.  
[PubMed Abstract](#) | [Publisher Full Text](#)
- Cameron SA, Lozier JD, Strange JP, *et al.*: **Patterns of widespread decline in North American bumble bees.** *Proc Natl Acad Sci U S A.* 2011; **108**(2): 662–667.  
[PubMed Abstract](#) | [Publisher Full Text](#) | [Free Full Text](#)
- Campbell J, Kessler B, Mayack C, *et al.*: **Behavioural fever in infected honeybees: parasitic manipulation or coincidental benefit?** *Parasitology.* 2010; **137**(10): 1487–1491.  
[PubMed Abstract](#) | [Publisher Full Text](#)
- Colla SR, Otterstatter MC, Gegear RJ, *et al.*: **Plight of the bumble bee: Pathogen spillover from commercial to wild populations.** *Biol Conserv.* 2006; **129**(4): 461–467.  
[Publisher Full Text](#)
- Detzel A, Wink M: **Attraction, deterrence or intoxication of bees (*Apis mellifera*) by plant allelochemicals.** *Chemoecology.* 1993; **4**(1): 8–18.  
[Publisher Full Text](#)
- Di Prisco G, Cavaliere V, Annoscia D, *et al.*: **Neonicotinoid clothianidin adversely affects insect immunity and promotes replication of a viral pathogen in honey bees.** *Proc Natl Acad Sci U S A.* 2013; **110**(46): 18466–71.  
[PubMed Abstract](#) | [Publisher Full Text](#) | [Free Full Text](#)
- Diawara MM, Trumble JT, White KK, *et al.*: **Toxicity of linear furanocoumarins to *Spodoptera exigua*: Evidence for antagonistic interactions.** *J Chem Ecol.* 1993; **19**(11): 2473–2484.  
[PubMed Abstract](#) | [Publisher Full Text](#)
- Diffenbaugh NS, Field CB: **Changes in ecologically critical terrestrial climate conditions.** *Science.* 2013; **341**(6145): 486–92.  
[PubMed Abstract](#) | [Publisher Full Text](#)
- Dyer LA, Dodson CD, Stireman JO, *et al.*: **Synergistic effects of three *Piper* amides on generalist and specialist herbivores.** *J Chem Ecol.* 2003; **29**(11): 2499–2514.  
[PubMed Abstract](#) | [Publisher Full Text](#)
- Free JB: **The flower constancy of bumblebees.** *J Anim Ecol.* 1970; **39**(2): 395–402.  
[Publisher Full Text](#)
- García-García R, López-Malo A, Palou E: **Bactericidal action of binary and ternary mixtures of carvacrol, thymol, and eugenol against *Listeria innocua*.** *J Food Sci.* 2011; **76**(2): M95–100.  
[PubMed Abstract](#) | [Publisher Full Text](#)
- Gause GF, Smaragdova NP: **On the killing action of optically isomeric nicotine in relation to problems of evolution of the nervous system in animals.** *Physiol Zool.* 1939; **12**(3): 238–255.  
[Reference Source](#)
- Gherman BI, Denner A, Bobiş O, *et al.*: **Pathogen-associated self-medication behavior in the honeybee *Apis mellifera*.** *Behav Ecol Sociobiol.* 2014; **68**(11): 1777–1784.  
[Publisher Full Text](#)
- Goulson D, Nicholls E, Botías C, *et al.*: **Bee declines driven by combined stress from parasites, pesticides, and lack of flowers.** *Science.* 2015; **347**(6229): 1255957.  
[PubMed Abstract](#) | [Publisher Full Text](#)
- Heil M: **Nectar: generation, regulation and ecological functions.** *Trends Plant Sci.* 2011; **16**(4): 191–200.  
[PubMed Abstract](#) | [Publisher Full Text](#)
- Heinrich B: **Temperature Regulation in the Bumblebee *Bombus vagans*: A Field Study.** *Science.* 1972; **175**(4018): 185–187.  
[PubMed Abstract](#) | [Publisher Full Text](#)
- Holmstrup M, Bindsbøl AM, Oostingh GJ, *et al.*: **Interactions between effects of environmental chemicals and natural stressors: a review.** *Sci Total Environ.* 2010; **408**(18): 3746–62.  
[PubMed Abstract](#) | [Publisher Full Text](#)
- Jeschke P, Nauen R, Schindler M, *et al.*: **Overview of the status and global strategy for neonicotinoids.** *J Agric Food Chem.* 2011; **59**(7): 2897–2908.  
[PubMed Abstract](#) | [Publisher Full Text](#)
- Kessler D, Baldwin IT: **Making sense of nectar scents: the effects of nectar secondary metabolites on floral visitors of *Nicotiana attenuata*.** *Plant J.* 2007; **49**(5): 840–54.  
[PubMed Abstract](#) | [Publisher Full Text](#)
- Kluger MJ: **The evolution and adaptive value of fever.** *Am Sci.* 1978; **66**(1): 38–43.  
[PubMed Abstract](#)
- Köhler A, Pirk CW, Nicolson SW: **Simultaneous stressors: interactive effects of an immune challenge and dietary toxin can be detrimental to honeybees.** *J Insect Physiol.* 2012a; **58**(7): 918–923.  
[PubMed Abstract](#) | [Publisher Full Text](#)
- Köhler A, Pirk CW, Nicolson SW: **Honeybees and nectar nicotine: deterrence and reduced survival versus potential health benefits.** *J Insect Physiol.* 2012b; **58**(2): 286–292.  
[PubMed Abstract](#) | [Publisher Full Text](#)
- Kumrungsee N, Pluempanupat W, Koul O, *et al.*: **Toxicity of essential oil compounds against diamondback moth, *Plutella xylostella*, and their impact on detoxification enzyme activities.** *J Pest Sci.* 2014; **87**(4): 721–729.  
[Publisher Full Text](#)
- Lesnoff M, Lancelot R: **R package aod: Analysis of overdispersed data.** 2012.  
[Reference Source](#)
- Li HB, Zheng YT, Sun DD, *et al.*: **Combined effects of temperature and avermectins on life history and stress response of the western flower thrips, *Frankliniella occidentalis*.** *Pestic Biochem Physiol.* 2014; **108**: 42–48.  
[PubMed Abstract](#) | [Publisher Full Text](#)
- Lipa J, Triggiani O: ***Crithidia bombi* sp. n. a flagellated parasite of a bumble-bee *Bombus terrestris* L. (Hymenoptera, Apidae).** *Acta Protozoologica.* 1988; **27**: 287–290.  
[Reference Source](#)
- Lydy MJ, Belden JB, Ternes MA: **Effects of temperature on the toxicity of m-parathion, chlorpyrifos, and pentachlorobenzene to *Chironomus tentans*.** *Arch Environ Contam Toxicol.* 1999; **37**(4): 542–547.  
[PubMed Abstract](#) | [Publisher Full Text](#)
- MacBean C: **A world compendium: The pesticide manual.** 16th edition. British Crop Production Council, Alton, UK. 2012.  
[Reference Source](#)
- Manson JS, Otterstatter MC, Thomson JD: **Consumption of a nectar alkaloid reduces pathogen load in bumble bees.** *Oecologia.* 2010; **162**(1): 81–89.  
[PubMed Abstract](#) | [Publisher Full Text](#)
- Manson JS, Rasmann S, Halitschke R, *et al.*: **Cardenolides in nectar may be more than a consequence of allocation to other plant parts: a phylogenetic study of *Asclepias*.** *Funct Ecol.* 2012; **26**(5): 1100–1110.  
[Publisher Full Text](#)
- Menne MJ, Durre I, Korzeniewski SM, *et al.*: **Global Historical Climatology Network - Daily (GHCN-Daily), Version 3.** NOAA National Climatic Data Center. 2012a; **3**.  
[Publisher Full Text](#)
- Menne MJ, Durre I, Vose RS, *et al.*: **An overview of the global historical climatology network-daily database.** *J Atmos Oceanic Technol.* 2012b; **29**: 897–910.  
[Publisher Full Text](#)
- Otoguro K, Iwatsuki M, Ishiyama A, *et al.*: ***In vitro* antitrypanosomal activity of plant terpenes against *Trypanosoma brucei*.** *Phytochemistry.* 2011; **72**(16): 2024–30.  
[PubMed Abstract](#) | [Publisher Full Text](#)

- Otterstatter MC, Thomson JD: **Within-host dynamics of an intestinal pathogen of bumble bees.** *Parasitology*. 2006; **133**(Pt 6): 749–61.  
[PubMed Abstract](#) | [Publisher Full Text](#)
- Pavia CS, Pierre A, Nowakowski J: **Antimicrobial activity of nicotine against a spectrum of bacterial and fungal pathogens.** *J Med Microbiol*. 2000; **49**(7): 675–6.  
[PubMed Abstract](#) | [Publisher Full Text](#)
- Pettis JS, vanEngelsdorp D, Johnson J, *et al.*: **Pesticide exposure in honey bees results in increased levels of the gut pathogen *Nosema*.** *Naturwissenschaften*. 2012; **99**(2): 153–158.  
[PubMed Abstract](#) | [Publisher Full Text](#) | [Free Full Text](#)
- Pinheiro J, Bates D, DebRoy S, *et al.*: **{nlme}: Linear and nonlinear mixed effects models.** 2015.  
[Reference Source](#)
- Potts SG, Biesmeijer JC, Kremen C, *et al.*: **Global pollinator declines: trends, impacts and drivers.** *Trends Ecol Evol*. 2010; **25**(6): 345–53.  
[PubMed Abstract](#) | [Publisher Full Text](#)
- R Core Team. **R: A language and environment for statistical computing.** R Foundation for Statistical Computing, Vienna, Austria. 2014.  
[Reference Source](#)
- Raffa KF, Berryman AA, Simasko J, *et al.*: **Effects of grand fir monoterpenes on the fir engraver, *Scolytus ventralis* (Coleoptera: Scolytidae), and its symbiotic fungus.** *Environ Entomol*. 1985; **14**(5): 552–556.  
[Publisher Full Text](#)
- Rattanachaikunsorn P, Phumkhaichorn P: **Assessment of factors influencing antimicrobial activity of carvacrol and cymene against *Vibrio cholerae* in food.** *J Biosci Bioeng*. 2010; **110**(5): 614–619.  
[PubMed Abstract](#) | [Publisher Full Text](#)
- Richards LA, Lampert EC, Bowers MD, *et al.*: **Synergistic effects of iridoid glycosides on the survival, development and immune response of a specialist caterpillar, *Junonia coenia* (Nymphalidae).** *J Chem Ecol*. 2012; **38**(10): 1276–1284.  
[PubMed Abstract](#) | [Publisher Full Text](#)
- Richardson LL, Adler LS, Leonard AS, *et al.*: **Secondary metabolites in floral nectar reduce parasite infections in bumblebees.** *Proc Biol Sci*. 2015a; **282**(1803): 20142471.  
[PubMed Abstract](#) | [Publisher Full Text](#) | [Free Full Text](#)
- Richardson LL, Bowers MD, Irwin RE: **Nectar chemistry mediates the behavior of parasitized bees: consequences for plant fitness.** *Ecology*. 2015b.  
[Publisher Full Text](#)
- Salathé RM, Schmid-Hempel P: **The genotypic structure of a multi-host bumblebee parasite suggests a role for ecological niche overlap.** *PLoS One*. 2011; **6**(8): e22054.  
[PubMed Abstract](#) | [Publisher Full Text](#) | [Free Full Text](#)
- Salathé R, Tognazzo M, Schmid-Hempel R, *et al.*: **Probing mixed-genotype infections I: extraction and cloning of infections from hosts of the trypanosomatid *Crithidia bombi*.** *PLoS One*. 2012; **7**(11): e49046.  
[PubMed Abstract](#) | [Publisher Full Text](#) | [Free Full Text](#)
- Schmid-Hempel R, Eckhardt M, Goulson D, *et al.*: **The invasion of southern South America by imported bumblebees and associated parasites.** *J Anim Ecol*. 2014; **83**(4): 823–837.  
[PubMed Abstract](#) | [Publisher Full Text](#)
- Schmid-Hempel R, Tognazzo M: **Molecular divergence defines two distinct lineages of *Crithidia bombi* (Trypanosomatidae), parasites of bumblebees.** *J Eukaryot Microbiol*. 2010; **57**(4): 337–45.  
[PubMed Abstract](#) | [Publisher Full Text](#)
- Schmidt TJ, Khalid SA, Romanha AJ, *et al.*: **The potential of secondary metabolites from plants as drugs or leads against protozoan neglected diseases - part II.** *Curr Med Chem*. 2012; **19**(14): 2176–2228.  
[PubMed Abstract](#) | [Publisher Full Text](#)
- Simone-Finstrom MD, Spivak M: **Increased resin collection after parasite challenge: a case of self-medication in honey bees?** *PLoS One*. 2012; **7**(3): e34601.  
[PubMed Abstract](#) | [Publisher Full Text](#) | [Free Full Text](#)
- Singaravelan N, Inbar M, Ne'eman G, *et al.*: **The effects of nectar-nicotine on colony fitness of caged honeybees.** *J Chem Ecol*. 2006; **32**(1): 49–59.  
[PubMed Abstract](#) | [Publisher Full Text](#)
- Singaravelan N, Nee'man G, Inbar M, *et al.*: **Feeding responses of free-flying honeybees to secondary compounds mimicking floral nectars.** *J Chem Ecol*. 2005; **31**(12): 2791–2804.  
[PubMed Abstract](#) | [Publisher Full Text](#)
- Singer MS, Mace KC, Bernays EA: **Self-medication as adaptive plasticity: increased ingestion of plant toxins by parasitized caterpillars.** *PLoS One*. 2009; **4**(3): e4796.  
[PubMed Abstract](#) | [Publisher Full Text](#) | [Free Full Text](#)
- Slotsbo S, Heckmann LH, Damgaard C, *et al.*: **Exposure to mercury reduces heat tolerance and heat hardening ability of the springtail *Folsomia candida*.** *Comp Biochem Physiol C Toxicol Pharmacol*. 2009; **150**(1): 118–123.  
[PubMed Abstract](#) | [Publisher Full Text](#)
- Stahlschmidt ZR, Adamo SA: **Context dependency and generality of fever in insects.** *Naturwissenschaften*. 2013; **100**(7): 691–696.  
[PubMed Abstract](#) | [Publisher Full Text](#)
- Tadmor-Melamed H, Markman S, Arieli A, *et al.*: **Limited ability of Palestine sunbirds *Nectarinia osea* to cope with pyridine alkaloids in nectar of tree tobacco *Nicotiana glauca*.** *Funct Ecol*. 2004; **18**(6): 844–850.  
[Publisher Full Text](#)
- Therneau TM: **R package coxme: Mixed effects cox models.** 2015.  
[Reference Source](#)
- Thomas MB, Blanford S: **Thermal biology in insect-parasite interactions.** *Trends Ecol Evol*. 2003; **18**(7): 344–350.  
[Publisher Full Text](#)
- Thorburn LP, Adler LS, Irwin RE, *et al.*: **Dataset 1 in: Variable effects of nicotine, anabesine, and their interactions on parasitized bumble bees.** *F1000Research*. 2015a.  
[Data Source](#)
- Thorburn LP, Adler LS, Irwin RE, *et al.*: **Dataset 2 in: Variable effects of nicotine, anabesine, and their interactions on parasitized bumble bees.** *F1000Research*. 2015b.  
[Data Source](#)
- Thorburn LP, Adler LS, Irwin RE, *et al.*: **Dataset 3 in: Variable effects of nicotine, anabesine, and their interactions on parasitized bumble bees.** *F1000Research*. 2015c.  
[Data Source](#)
- Tognazzo M, Schmid-Hempel R, Schmid-Hempel P: **Probing mixed-genotype infections II: high multiplicity in natural infections of the trypanosomatid, *Crithidia bombi*, in its host, *Bombus* spp.** *PLoS One*. 2012; **7**(11): e49137.  
[PubMed Abstract](#) | [Publisher Full Text](#) | [Free Full Text](#)
- Tomizawa M, Yamamoto I: **Binding of nicotinoids and the related compounds to the insect nicotinic acetylcholine compounds receptor.** *J Pestic Sci*. 1992; **17**(4): 231–236.  
[Publisher Full Text](#)
- Ujváry I: **Nicotine and other insecticidal alkaloids.** In Yamamoto I, and Casida JE, editors. *Nicotinoid insecticides and the nicotinic acetylcholine receptor*. Springer-Verlag, Tokyo. 1999: 29–69.  
[Publisher Full Text](#)
- Venables WN, Ripley BD: **Modern applied statistics with S.** Fourth edition. Springer, New York. 2002.  
[Publisher Full Text](#)
- Whitehead SR, Bowers MD: **Chemical ecology of fruit defence: Synergistic and antagonistic interactions among amides from *Piper*.** *Funct Ecol*. 2014; **28**(5): 1094–1106.  
[Publisher Full Text](#)
- Whitehorn PR, Tinsley MC, Brown MJF, *et al.*: **Investigating the impact of deploying commercial *Bombus terrestris* for crop pollination on pathogen dynamics in wild bumble bees.** *J Apicult Res*. 2013; **52**(3): 149–157.  
[Publisher Full Text](#)
- Williams PH, Araújo MB, Rasmont P: **Can vulnerability among British bumblebee (*Bombus*) species be explained by niche position and breadth?** *Biol Conserv*. 2007; **138**(3–4): 493–505.  
[Publisher Full Text](#)
- Williams P, Colla S, Xie Z: **Bumblebee vulnerability: common correlates of winners and losers across three continents.** *Conserv Biol*. 2009; **23**(4): 931–940.  
[PubMed Abstract](#) | [Publisher Full Text](#)
- Wink M, Theile V: **Alkaloid tolerance in *Manduca sexta* and phylogenetically related sphingids (Lepidoptera: Sphingidae).** *Chemoecology*. 2002; **12**(1): 29–46.  
[Publisher Full Text](#)

# Open Peer Review

Current Referee Status:



Version 2

Referee Report 29 January 2016

doi:10.5256/f1000research.8151.r11592



**Michael Simone-Finstrom<sup>1</sup>, Margarita Lopez-Uribe<sup>2</sup>**

<sup>1</sup> Honey Bee Breeding, Genetics, and Physiology Research, USDA Agricultural Research Service, Baton Rouge, LA, USA

<sup>2</sup> Department of Entomology, North Carolina State University, Raleigh, NC, USA

Overall we feel that the authors fully addressed our concerns and those of the other reviewer and significantly improved their manuscript. The fact that they were able to conduct a short experiment adds to the paper and to their conclusions, and we appreciate their willingness and ability to do this.

We just have two minor comments, that likely do not require a revision of the paper, but the authors can decide. Perhaps, due to the openness of the reviews and subsequent replies, this discussion is sufficient. However, if the authors choose to, it would be nice if they make their 'a priori' approach for model selection explicit in the manuscript, and we do not think they should be quite so dismissive of the possible interaction between weight and their treatments. For example, in the authors' response to our earlier comments regarding the possible interaction, they state that other papers either don't report the interaction or it's non-significant in the Barrachi paper, which is not an entirely satisfying reason to ignore it here. Additionally, the Barrachi paper did find a significant weight x treatment effect for at least one portion of their experiment. It seems as though this test could at least be attempted, but again we do not think that this necessarily requires a revision of the manuscript.

## References

1. Baracchi D, Brown MJ, Chittka L: Behavioural evidence for self-medication in bumblebees?. *F1000Res* . 2015; 4: 73 [PubMed Abstract](#) | [Publisher Full Text](#)

**We have read this submission. We believe that we have an appropriate level of expertise to confirm that it is of an acceptable scientific standard.**

**Competing Interests:** No competing interests were disclosed.

Referee Report 29 December 2015

doi:10.5256/f1000research.8151.r10398



**David Baracchi**

School of Biological and Chemical Sciences, Queen Mary, University of London, London, UK



The authors responded appropriately to my concerns and other important points raised by Dr.'s Simone-Finstrom and Lopez-Urbe. I appreciated that authors conducted an additional 'Consumption experiment' as required. Despite the new results are puzzling and did not provide a clear and definitive picture of the 'story' they are well discussed. Overall, I found the manuscript improved and I think that it represents an important starting point for further investigations. Accordingly, I recommend indexing the submitted revised article.

**I have read this submission. I believe that I have an appropriate level of expertise to confirm that it is of an acceptable scientific standard.**

**Competing Interests:** I am one of the authors of a paper that is cited prominently by Thorburn et al.

---

### Version 1

Referee Report 19 October 2015

doi:[10.5256/f1000research.7396.r10860](https://doi.org/10.5256/f1000research.7396.r10860)



#### David Baracchi

School of Biological and Chemical Sciences, Queen Mary, University of London, London, UK

The authors investigated how the consumption of nectar alkaloids, either in isolation or combination, affect survival and pathogen load in a pollinator species. The main goal of the paper is to test the synergistic effects of two alkaloids on bee survival and parasite loads. To address this question the authors used the pollinator *Bombus impatiens*, its common midgut parasite, *Crithidia bombi*, and the natural alkaloids anabasine and nicotine, which are two nectar secondary metabolites produced by *Nicotiana* species. They provided evidence that both alkaloids decreased the parasite loads when bumble bees were kept under variable laboratory conditions. By contrast, they showed that nicotine but not anabasine increased the parasite load when bees were kept under controlled laboratory conditions. The consumption of the alkaloids in combinations did not have any synergistic effect, but rather an antagonistic effect especially under variable rearing conditions.

The authors concluded that the interaction between secondary metabolites are complex and that environmental variables may play an important role in determining the positive or negative impact of the diet on pollinator health.

The study addresses an important question and provides useful results. There are, however, some points that need clarification and some issues that should be addressed.

#### Major concerns:

- In "Methods" the authors stated that " In 'Variable', pupal clumps were initially incubated on the lab bench, but were later incubated at 30°C in an incubator....". It is not clear if they used the bees obtained from these initial pupal clumps for the experiments or not. If they excluded them, then there is no need to report this information. If not, authors should discuss the possible implications of this "extra" stress.

- "The overall parasite loads in 'Controlled' were much higher, with median parasite loads more than double those observed in "Variable". In my view this point is very important and neglected by the authors and it might partially account for the apparent contradiction between the results of "Variable" and "Controlled" experiments. There are evidences for the existence of a trade-off between alkaloid toxicity to the parasite and toxicity to the host. If the parasite load is too high and bumblebee weakened, the toxicity to the bees might overcome that to the parasite, resulting in even higher parasite loads. On the other hand, if the parasite load is lower, the costs in consuming the alkaloids might have been counterbalanced by the advantages in slowing the progression of the infection. Authors should discuss this point.
- Do authors have any explanation why bumble bees exposed to 2 ppm nicotine had a so high mortality rate after only 7 days since exposure? For instance, Baracchi *et al* 2015 also found a toxic effect of nicotine, but the detrimental effect on bee lifespan started to be evident only about 20-30 days after the start of the experiment.
- "Variable" and "Controlled" experiments also differed in time of year (the experiments were carried out in February-March and May-July respectively). Season is thus an existing confounding factor that authors should seriously take into account in the discussion.
- Authors suggested that under variable conditions, bees may have consumed more liquid, causing ingestions of more alkaloids accounting for both the higher mortality and decreased parasite load in 'Variable'. Here I respectfully disagree since I would expect that bees constantly exposed to high temperatures would consume more liquid. It is also possible that bees exposed to high temperatures might have less water in the faeces or might defecate less for suppressing water loss, which may results in higher parasite load. Unfortunately, authors did not provide any information about the overall quantity of sucrose consumed by bumblebees over the experiments. I think that authors should address this point with a simple additional experiment. Measuring for few days the quantity of liquid consumed, and possibly the excretion rate of bees exposed to different temperatures, might really help them to better discuss and clarify their findings.

#### Minor points:

- The most novel aspect of the manuscript is the fact that authors investigated the possible interactions between two natural alkaloids. I suggest to mention this aspect in the title.
- In my opinion the first paragraph of the introduction is not necessary.
- The second paragraph of the introduction discusses about the topic of self-medication and preferential feeding on alkaloid enriched nectars by pollinators and Baracchi *et al.* 2015 should be included in the paragraph since it is really pertinent here.
- The authors dedicated an entire long paragraph on the chemical nature on nicotine used by Richardson *et al.* 2015 and the present manuscript. The paragraph is too long. On top of that, Richardson *et al.* 2015 and Baracchi *et al* 2015 (we amended this information in the paper) used different types of nicotine (the former used a +/- enantiomeric mixture, whereas the latter used (-)-enantiomer of nicotine, as the authors of the present work also did) obtaining the same results. Thus, it is improbable that the chemical composition of the alkaloid is responsible for the differences found. I suggest to reduce or remove this paragraph.

- For the "Variable" data set authors used the GLMM while for the "Controlled" data set authors used a Cox proportional hazards mixed-effects model. Given that the "Variable" data set does not allow to use a Cox prop hazards mixed-effects model, I agree with this statistical approach, but nonetheless, it might be useful if the authors analyze the "Controlled" data also with the GLMM, so that a direct comparison of the two situations would be possible.
- "Variable" and "Controlled" experiments also differed in the fact that only bees in the "Controlled" were kept with constant darkness, which could have an effect on bee locomotor activity, energy consumption etc.. Authors should mention this in the discussion.

**I have read this submission. I believe that I have an appropriate level of expertise to confirm that it is of an acceptable scientific standard, however I have significant reservations, as outlined above.**

**Competing Interests:** No competing interests were disclosed.

Author Response 07 Dec 2015

**Evan Palmer-Young**, Univ of Massachusetts, USA

Dear Dr. Baracchi,

Many thanks for your thorough critical review of our article. We feel that the revised version is now improved in response to your comments. We address each point below:

**Reviewer comment:** The study addresses an important question and provides useful results.

**Author Response:** We thank the reviewer for this gracious comment.

**Major concerns:**

**Reviewer Comment:** In "Methods" the authors stated that " In 'Variable', pupal clumps were initially incubated on the lab bench, but were later incubated at 30°C in an incubator....". It is not clear if they used the bees obtained from these initial pupal clumps for the experiments or not. If they excluded them, then there is no need to report this information. If not, authors should discuss the possible implications of this "extra" stress.

**Author Response:** We now clarify in "Methods: Rearing Conditions" that we used the bees from all of these pupal clumps. The pupal clumps were only moved to the incubator during the last week of inoculations, 2 days before the emergence of the last bees to be inoculated. Hence, all of the bees in the "Variable" experiment would have been exposed to variable temperatures during pupation. We agree that this additional stress could have affected both survival and immunity, and now mention both of these possibilities in the discussion.

**Reviewer Comment:** "The overall parasite loads in 'Controlled' were much higher, with median parasite loads more than double those observed in "Variable". In my view this point is very important and neglected by the authors and it might partially account for the apparent contradiction between the results of "Variable" and "Controlled" experiments. There are evidences for the existence of a trade-off between alkaloid toxicity to the parasite and toxicity to the host. If the parasite load is too high and bumblebee weakened, the toxicity to the bees might overcome that to the parasite, resulting in even higher parasite loads. On the other hand, if the parasite load is lower, the costs in consuming the alkaloids might have been counterbalanced by the advantages in slowing the progression of the infection.

**Author Response:** Thank you for this suggestion. We have added the idea that alkaloids might be most medicinal against mild infections to the final paragraph of "Discussion: Interactive effects of abiotic conditions, alkaloids, and parasites on bees".

**Reviewer Comment:** Do authors have any explanation why bumble bees exposed to 2 ppm

nicotine had a so high mortality rate after only 7 days since exposure? For instance, Baracchi *et al* 2015 also found a toxic effect of nicotine, but the detrimental effect on bee lifespan started to be evident only about 20-30 days after the start of the experiment.

**Author Response:** In the 'Variable' experiment, we believe that the stress from fluctuating temperatures contributed to overall higher levels of mortality and greater susceptibility to alkaloid toxicity than under the "standard laboratory conditions" employed in Baracchi *et al* (2015). The other reviewers, Dr.'s Simone-Finstrom and Lopez-Urbe, had a similar comment about our high reported rates of mortality in 'Stable' in comparison with Richardson *et al.* 2015 and Baracchi *et al.* 2015. We duplicate that response here:

It is correct that our study found much higher rates of mortality, even under 'Stable' conditions (up to 35% over 7 d), than these two prior papers. However, both of these studies employed different rearing conditions from ours in their experiments measuring survival. Richardson *et al.* (2015) measured mortality in microcolonies (3-bee communities) incubated in 500 mL plastic deli containers, as opposed to the solitary bees in 30 mL snap-cap vials used in our experiments. Baracchi *et al.* used individual bees, but they were housed in petri dishes rather than vials; in addition, whereas Baracchi *et al.* kept bees in the same petri dish throughout the experiment (D. Baracchi, personal communication), we moved our bees to clean vials daily, which may have imposed additional stress resulting from handling. Finally, Baracchi *et al.* used a different strain of *Crithidia*, and also a different bee species (*B. terrestris*) from the one we used (*B. impatiens*). Any of these social, environmental and genetic factors may have contributed to the observed differences in mortality.

**Reviewer comment:** "Variable" and "Controlled" experiments also differed in time of year (the experiments were carried out in February-March and May-July respectively). Season is thus an existing confounding factor that authors should seriously take into account in the discussion.

**Author Response:** We are hesitant to speculate on the effects of season, because bee colonies were kept indoors in cardboard boxes and inside closed cabinets, which shielded them from circadian cues. In addition, we do not know enough about the rearing conditions employed by our commercial supplier—e.g. how long bees had been raised in captivity, to what seasonal cues they were exposed-- to offer an informed discussion of this point. However, we do feel that exposure to environmental cues was an important factor within the experiment itself, and have emphasized the possible interactive effects of alkaloid consumption together with daylight and lab stimuli, as astutely pointed out in Dr. Baracchi's final comment. We mention these interactive effects in the first paragraph of "Discussion: Interactive effects of abiotic conditions, alkaloids, and parasites on bees", and reiterate their possible importance in the new Discussion paragraph contrasting our results with those of Baracchi *et al.*

**Reviewer comment:** Authors suggested that under variable conditions, bees may have consumed more liquid, causing ingestions of more alkaloids accounting for both the higher mortality and decreased parasite load in 'Variable'. Here I respectfully disagree since I would expect that bees constantly exposed to high temperatures would consume more liquid. It is also possible that bees exposed to high temperatures might have less water in the faeces or might defecate less for suppressing water loss, which may results in higher parasite load. Unfortunately, authors did not provide any information about the overall quantity of sucrose consumed by bumblebees over the experiments. I think that authors should address this point with a simple additional experiment. Measuring for few days the quantity of liquid consumed, and possibly the excretion rate of bees exposed to different temperatures, might really help them to better discuss and clarify their findings.

**Author response:** We conducted a follow-up experiment ('Consumption experiment', Figure 5) in which we measured nectar consumption at 2 different temperatures, 27 °C and 33 °C. The lower temperature matched that used in the 'Stable' experiment (formerly 'Controlled'), whereas the

higher temperature was designed to simulate typical daytime temperatures during 'Variable'. To our surprise, nectar consumption was *reduced* by over 50% at the higher temperature. Accordingly, we have removed speculation that bees in the generally warmer 'Variable' experiment may have consumed greater quantities of nectar and alkaloids, and instead suggest that nicotine might have exacerbated stress from dehydration.

Bees in both temperature treatments were housed in an incubator under dark conditions, similar to those in the 'Stable' experiment but lacking the light and other stimuli to which bees were exposed in the 'Variable' experiment. The interactive effects of temperature and external stimuli offer an intriguing area for further study, and we encourage such investigation in the Discussion. We thank Dr. Baracchi for suggestions and encouragement with the Consumption experiment.

**Minor points:**

**Reviewer comment:** The most novel aspect of the manuscript is the fact that authors investigated the possible interactions between two natural alkaloids. I suggest to mention this aspect in the title.

**Author response:** We agree. We now mention compound interactions in the title.

**Reviewer comment:** In my opinion the first paragraph of the introduction is not necessary.

**Author response:** This paragraph has been shortened and combined with former second paragraph.

**Reviewer comment:** The second paragraph of the introduction discusses about the topic of self-medication and preferential feeding on alkaloid enriched nectars by pollinators and Baracchi *et al.* 2015 should be included in the paragraph since it is really pertinent here.

**Author response:** Baracchi *et al.* 2015 is now cited in the third paragraph of the introduction that documents medicinal effects of secondary metabolites on pollinators.

**Reviewer comment:** The authors dedicated an entire long paragraph on the chemical nature on nicotine used by Richardson *et al.* 2015 and the present manuscript. The paragraph is too long. On top of that, Richardson *et al.* 2015 and Baracchi *et al.* 2015 (we amended this information in the paper) used different types of nicotine (the former used a +/- enantiomeric mixture, whereas the latter used (-)-enantiomer of nicotine, as the authors of the present work also did) obtaining the same results. Thus, it is improbable that the chemical composition of the alkaloid is responsible for the differences found. I suggest to reduce or remove this paragraph.

**Author response:** This paragraph has been reduced by half, but we felt that it was important to note this difference at some level, given the similarities between our study and that of Richardson *et al.* 2015 and the multiple studies demonstrating the disparate effects of the two enantiomers.

**Reviewer comment:** For the "Variable" data set authors used the GLMM while for the "Controlled" data set authors used a Cox proportional hazards mixed-effects model. Given that the "Variable" data set does not allow to use a Cox prop hazards mixed-effects model, I agree with this statistical approach, but nonetheless, it might be useful if the authors analyze the "Controlled" data also with the GLMM, so that a direct comparison of the two situations would be possible.

**Author response:** This analysis is now given in supplementary Table S2.

**Reviewer comment:** "Variable" and "Controlled" experiments also differed in the fact that only bees in the "Controlled" were kept with constant darkness, which could have an effect on bee locomotor activity, energy consumption etc.. Authors should mention this in the discussion.

**Author response:** We now comment on this difference in a new Discussion paragraph in which we contrast our results with those of Dr. Baracchi and colleagues.

Thank you again for the thorough review and helpful suggestions.

Sincerely,

Evan Palmer-Young on behalf of the authors

**Competing Interests:** I am an author on the article being refereed

Referee Report 07 October 2015

doi:10.5256/f1000research.7396.r10403



**Michael Simone-Finstrom<sup>1</sup>, Margarita Lopez-Uribe<sup>2</sup>**

<sup>1</sup> Honey Bee Breeding, Genetics, and Physiology Research, USDA Agricultural Research Service, Baton Rouge, LA, USA

<sup>2</sup> Department of Entomology, North Carolina State University, Raleigh, NC, USA

Thorburn *et al.* describe an experiment where they test the dual effect of two secondary plant compounds on bumble bee mortality and parasite load after infections with the pathogen *Crithidia bombi*. This paper addresses an interesting question that follows up recent findings about the potential use of secondary metabolites of nectar as a self-medication mechanism to reduce parasite infections in bumble bees. However, we found several major points that the authors should address to clarify the results of the study and to better frame it within the context of previous findings.

#### Major concerns:

- We found multiple points of the statistical analysis that were unclear:

For the 'controlled' experiment, the authors say they used a Cox proportional hazards mixed-effect model. However, the risk ratio of death is not reported, which is one of the most informative parameters to quantitatively estimate the difference in survival between the four groups. It is also surprising that there was no significant difference between the survival of the groups. From Fig. 3, it seems that the group in the Nicotine+Anabasine had lower probability of survival.

Wouldn't a model that allows for interactions of treatment, colony and mass be more appropriate?

Regarding mass and colony, since both terms were highly significant, how does that affect the interpretation of the results? Was there no relationship with mass and treatment? Also did the masses of bees from the 'Variable' experiment differ from those in the 'Controlled' experiment due to the stress they experienced during pupation?

- The authors report a high pre-experiment mortality rate in the "controlled" treatment. Is it possible that the pupae were stressed before starting the experiment and that this condition had a significant effect in the bee survival during the experiment? Even in the control bees, a 60% mortality after 7 days was reported. These numbers seem high compared to other recent studies (Baracchi *et al.* 2015, Richardson *et al.* 2015).
- It was interesting to find out that the 'variable' treatment generated the most interesting results. However, the conflicting findings of the 'controlled' and 'variable' treatments need to be better reconciled in the discussion. There also needs to be more information reported regarding how the temperature fluctuated.
- Why do authors think that the results of the 'variable treatment' were the product of heat stress and not cold stress, or just stress in general? Similarly the fact that the 'variable treatment' was during pupation and not just during the treatment period needs to be addressed along with the implications of that possible effect.

- This is an overall comment about the structure of the introduction and discussion. Even though the text is well written, the structure of these sections does not connect ideas very well. It reads as a list of ideas, rather than one story with a beginning and an end.

**Minor comments:**

- In the abstract, authors state that they tested for ‘synergistic’ effect between two alkaloid compounds. However, results show antagonistic effects between them. Would it be better to just broadly state that the authors are testing for possible interactions between these compounds?
- The 2nd to last paragraph in the introduction. The authors should make the point that this is the first study to look at a combination of any alkaloids, and not just nicotine and anabasine, if that’s the case. It makes this study more significant and should be highlighted.
- In M&M, the subheading ‘diet treatment’ could be confused with a treatment where variable amounts of protein, carbohydrates and lipids were used. Would it be better to call this section ‘Secondary Compound Treatments’?
- On a similar note, the authors may consider changing the names of the treatment groups to “Variable” and “Stable” or something to that effect so there are not two control treatments.
- Was the inoculation done before or after the ‘diet treatment’? If it was done before, please mention this section of the methods in the order in which the experiment took place. This will help the reader with clarity about the process.
- The sample sizes for the parasite load analysis could be in the text or figure, rather than in a supplementary file.
- 2nd paragraph of the discussion. Baracchi *et al.* 2015 found the same result of low levels of nicotine causing mortality, which is left out here.
- The section entitled “In a controlled temperature environment...” starts by seemingly contradicting the previous section without any discussion of that. Also these results need to be reconciled with Baracchi *et al.* 2015.
- Should be black queen cell virus (instead of brood queen cell virus)
- The paragraph explaining the difference in chemical composition between the nicotine in Richardson *et al.* and this manuscript is too long and it still doesn’t explain why there was no effect on the parasite loads.
- The last sentence of the discussion states that ‘bees would be unlikely to consume enough nicotine from nectar to experience toxic effects’. There is a large body of literature on the effects toxic nectar on bees, how can the authors be certain about that? Particularly given that some nectar is stored within the nest and combined with other nectars.

**We have read this submission. We believe that we have an appropriate level of expertise to confirm that it is of an acceptable scientific standard, however we have significant reservations, as outlined above.**

**Competing Interests:** No competing interests were disclosed.

Author Response 07 Dec 2015

**Evan Palmer-Young**, Univ of Massachusetts, USA

Dear Dr.'s Simone-Finstrom and Lopez-Uribe,  
Many thanks for your careful review of our research. We have revised the manuscript to incorporate your suggestions, and hope that you find the new version improved in content and clarity. We respond to each of your points below:

**Major concerns:**

**Reviewer Comment:** We found multiple points of the statistical analysis that were unclear:

For the 'controlled' experiment, the authors say they used a Cox proportional hazards mixed-effect model. However, the risk ratio of death is not reported, which is one of the most informative parameters to quantitatively estimate the difference in survival between the four groups. It is also surprising that there was no significant difference between the survival of the groups. From Fig. 3, it seems that the group in the Nicotine+Anabasine had lower probability of survival.

**Author Response:** The death hazard ratios are now reported in the text, along with results of the pairwise comparison between the Control and Nicotine + Anabasine groups. Although the Nicotine + Anabasine group did have a higher estimated death hazard ratio ( $1.27 \pm 0.22$  SE) compared to the control group ( $0.82 \pm 0.16$  SE), this difference was not statistically significant ( $p=0.446$  for pairwise comparison).

**Reviewer Comment:** Wouldn't a model that allows for interactions of treatment, colony and mass be more appropriate?

**Author Response:** We agree that it would have been interesting to investigate a more complex model. However, we were concerned that adding additional terms would prevent meaningful tests of the effects of alkaloid consumption, particularly in the 'Variable' experiment, which had a smaller sample size and an unbalanced design due to the high mortality among bees that consumed nicotine. Although the 'Stable' experiment had a larger sample size, we chose to analyze it with the same model used for the 'Variable' experiment, to facilitate comparison between the two results. Therefore, we formulated our models *a priori* without interaction terms. In previous studies testing the effects of secondary metabolite consumption on *Crithidia* infection, interaction terms were found to be non-significant (e.g. Baracchi *et al.* (2015)) or were not reported (e.g., Richardson *et al.* 2015 Proc Biol Sci. 22;282(1803):20142471. doi: 10.1098/rspb.2014.2471; Manson *et al.* 2010, Oecologia.62(1):81-9. doi: 10.1007/s00442-009-1431-9).

**Reviewer Comment:** Regarding mass and colony, since both terms were highly significant, how does that affect the interpretation of the results?

**Author Response:** This significance shows that *Crithidia* infection intensity varies by mass and also by colony, which is consistent with the results of previous studies (e.g., Otterstatter & Thompson 2006 Parasitology 133(Pt 6):749-61. <http://doi.org/10.1017/S003118200600120X>), but does not invalidate our conclusions about the effects of treatment. We have emphasized the effects of mass and colony genotype in the new paragraph of the discussion section about the differences between our study and that of Baracchi and colleagues.



**Reviewer Comment:** Was there no relationship with mass and treatment?

**Author Response:** We apologize for this confusion. Bee mass refers to mass at time of emergence from pupation, before treatments were applied. We now clarify this in Methods: Statistical analysis and in the legends of Tables 2 and 4.

**Reviewer Comment:** Also did the masses of bees from the 'Variable' experiment differ from those in the 'Controlled' experiment due to the stress they experienced during pupation?

**Author Response:** Yes—somewhat surprisingly, bees in the 'Variable' experiment were significantly larger (mean = 0.160 g) than in the 'Stable' (formerly 'Controlled') experiment (mean = 0.121 g). We expect that this reflects high mortality of the smaller bees in 'Variable', which might have been more likely to die during pupation or during the two days between emergence and inoculation. This finding has been added to the section of the Results describing the 'Stable' experiment, and is mentioned again in the first paragraph of the Discussion.

**Reviewer Comment:** The authors report a high pre-experiment mortality rate in the "controlled" treatment. Is it possible that the pupae were stressed before starting the experiment and that this condition had a significant effect in the bee survival during the experiment?

**Author Response:** In the 'Variable' experiment, pre-experiment mortality was indeed high, and yes, likely impacted survival during the experiment as well. The chronic exposure of colonies, pupae, and adult bees to variable temperatures is now noted in the third paragraph of "Methods: Rearing conditions" and in the first paragraph of the discussion.

**Reviewer Comment:** Even in the control bees, a 60% mortality after 7 days was reported. This numbers seem high compared to other recent studies (Baracchi *et al.* 2015, Richardson *et al.* 2015).

**Author Response:** It is correct that our study found much higher rates of mortality, even under 'Stable' conditions (up to 35% over 7 d), than these two prior papers. However, both of these studies employed different rearing conditions from ours in their experiments measuring survival. Richardson *et al.* (2015) measured mortality in microcolonies (3-bee communities) incubated in 500 mL plastic deli containers, as opposed to the solitary bees in 30 mL snap-cap vials used in our experiments. Baracchi *et al.* used individual bees, but they were housed in petri dishes rather than vials; in addition, whereas Baracchi *et al.* kept bees in the same petri dish throughout the experiment (D. Baracchi, personal communication), we moved our bees to clean vials daily, which may have imposed additional stress resulting from handling. Finally, Baracchi *et al.* used a different strain of *Crithidia*, and also a different bee species (*B. terrestris*) from the one we used (*B. impatiens*). Any of these social, environmental and genetic factors may have contributed to the observed differences in mortality. These differences are described in the new Discussion paragraph contrasting our study with that of Baracchi *et al.*

**Reviewer Comment:** It was interesting to find out that the 'variable' treatment generated the most interesting results. However, the conflicting findings of the 'controlled' and 'variable treatments need to better reconcile in the discussion.

**Author Response:** We have added and clarified speculation about the reasons for these differences and their implications in "Discussion: Interactive effects of abiotic conditions, alkaloids, and parasites on bees", wherein we consider a number of non-exclusive possible explanations for differences in the effects of alkaloids' effects on mortality and parasitism between 'Variable' and 'Stable':

(1) Increased consumption: We hypothesized that the stronger effects of alkaloids in 'Variable' may have resulted from increased liquid (nectar) intake under hot conditions. We tested this idea in the 'Consumption experiment'. To our surprise, bees drank substantially less at high temperatures similar to those in 'Variable'. These results are now reported (Figure 5, Table 5).

(2) Interactions between multiple stressors:

(a) Mortality: Stronger effects of alkaloid intake on mortality in 'Variable' may reflect increased susceptibility to alkaloid toxicity in the presence of multiple stressors, including temperature fluctuation and external disturbance. Given the results of the 'Consumption experiment', we now speculate that nicotine may have increased mortality in 'Variable' by increasing fecal moisture losses. Because the warmer temperatures of 'Variable' appear to have increased evaporative moisture loss while reducing nectar intake, any additional nicotine-induced moisture loss would have increased the risk of lethal dehydration.

(b) Parasitism: By the same logic, stronger effects of alkaloid intake on parasitism in variable temperatures may reflect synergistic effects of alkaloids and external stimuli on locomotor and gut activity. In the new paragraph describing the differences between our study and that of Baracchi *et al.* (2015), we have noted that we both we and Baracchi *et al.* showed antiparasitic effects of nicotine consumption when bees were kept on the lab bench (as they were in 'Variable'), but not when bees were housed in constant darkness (as in 'Stable').

(3) Inhibitory effects of high temperatures on *Crithidia* compensating for nicotine-induced immunosuppression: We suggest that in 'Stable', immunosuppressive effects of nicotine contributed to increased parasite loads. In contrast, in 'Variable', stimulatory effects of alkaloid consumption on locomotor activity may have caused bee body temperature to reach or exceed the thermal tolerance limits of the parasite. These febrile effects may have offset any immunosuppressive effects of nicotine.

(4) In the paragraph describing differences between *Crithidia* strains, we have incorporated an additional suggestion from the other reviewer. Dr. Baracchi suggested that nicotine and anabasine may have their greatest medicinal value at lower levels of infection, such as those observed in 'Variable', where median *Crithidia* counts were lower than in 'Stable'.

**Reviewer Comment:** There also needs to be more information reported regarding how the temperature fluctuated. Why do authors think that the results of the 'variable treatment' were the product of heat stress and not cold stress, or just stress in general?

**Author Response:** We agree that the effects seen in 'Variable' could reflect both heat and cold stress. However, my personal recollection (ECPY) was that most of the time the lab was very hot, around 35 °C, at least during the day when the experimenters were present. Cold stress seemed to be more occasional, with sporadic morning and weekend periods when the temperature decreased to 10-15 °C due to building steam being shut off for repairs. We would have liked to have kept more careful records, ideally from data loggers, but the extent and duration of the variability in temperature was entirely unexpected, and we did not consistently note the precise conditions. Additional detail about the temperature fluctuation has been added to the first paragraph of Methods: Rearing conditions.

**Reviewer Comment:** Similarly the fact that the 'variable treatment' was during pupation and not just during the treatment period needs to be addressed along with the implications of that possible effect.

**Author Response:** We have now noted this additional stress throughout the developmental period in 3 places: in the third paragraph of "Methods: Rearing conditions", at the end of "Results: 'Stable'", and in the first paragraph of the discussion.

**Reviewer Comment:** This is an overall comment about the structure of the introduction and discussion. Even though the text is well written, the structure of these sections does not connect ideas very well. It reads as a list of ideas, rather than one story with a beginning and an end.

**Author Response:** We appreciate this gracious compliment, and have attempted to improve the organization of the introduction, where we have shortened or separated some paragraphs. In the discussion, we have shortened the paragraph contrasting our results with those of Richardson *et al.* (2015), and have elaborated on the differences between 'Stable' and 'Variable' as well as between our study and previous ones.

**Minor comments:**

**Reviewer Comment:** In the abstract, authors state that they tested for ‘synergistic’ effect between two alkaloid compounds. However, results show antagonistic effects between them. Would it be better to just broadly state that the authors are testing for possible interactions between these compounds?

**Author Response:** We agree and have rephrased the abstract.

**Reviewer Comment:** The 2nd to last paragraph in the introduction. The authors should make the point that this is the first study to look at a combination of any alkaloids, and not just nicotine and anabasine, if that’s the case. It makes this study more significant and should be highlighted.

**Author Response:** Thank you. We now highlight this unique contribution in the aforementioned paragraph.

**Reviewer Comment:** In Materials&Methods, the subheading ‘diet treatment’ could be confused with a treatment where variable amounts of protein, carbohydrates and lipids were used. Would it be better to call this section ‘Secondary Compound Treatments’?

**Author Response:** We have implemented this suggestion.

**Reviewer Comment:** On a similar note, the authors may consider changing the names of the treatment groups to “Variable” and “Stable” or something to that effect so there are not two control treatments.

**Author Response:** We apologize that the naming of the “Controlled” experiment was confusing. We have implemented this suggestion and renamed the “Controlled” experiment to “Stable”.

**Reviewer Comment:** Was the inoculation done before or after the ‘diet treatment’? If it was done before, please mention this section of the methods in the order in which the experiment took place. This will help the reader with clarity about the process.

**Author Response:** We apologize for the confusion. The inoculation was performed before the secondary compound treatment began. Bees were fed 30% sucrose nectar without secondary metabolites for 2 days after emergence, then inoculated with *Crithidia*. Diet treatments were implemented immediately post-inoculation. We have reordered this description in the methods section (“Rearing conditions”: final paragraph).

**Reviewer Comment:** The sample sizes for the parasite load analysis could be in the text or figure, rather than in a supplementary file.

**Author response:** We have now listed the sample sizes for each analysis in the legends of the relevant figures.

**Reviewer Comment:** 2nd paragraph of the discussion. Baracchi *et al.* 2015 found the same result of low levels of nicotine causing mortality, which is left out here.

**Author response:** This result is now cited (third paragraph of Discussion).

**Reviewer Comment:** The section entitled “In a controlled temperature environment...” starts by seemingly contradicting the previous section without any discussion of that.

**Author response:** We have added two transition sentences at the beginning of this paragraph.

**Reviewer Comment:** Also these results need to be reconciled with Baracchi *et al.* 2015.

**Author response:** We have added a full paragraph to the discussion section outlining the differences between our experiments and those of Baracchi *et al.* (2015).

**Reviewer Comment:** Should be black queen cell virus (instead of brood queen cell virus)

**Author response:** Thank you for pointing out this error. It is now corrected.

**Reviewer Comment:** The paragraph explaining the difference in chemical composition between the nicotine in Richardson *et al* and this manuscript is too long and it still doesn’t explain why there was no effect on the parasite loads.

**Author response:** This paragraph has been substantially reduced, but is retained in a shortened form; the editors encouraged us to include this paragraph in order to reconcile our results with

those of Richardson *et al.*, which included experiments done in our own laboratory.

**Reviewer Comment:** The last sentence of the discussion states that ‘bees would be unlikely to consume enough nicotine from nectar to experience toxic effects’. There is a large body of literature on the effects toxic nectar on bees, how can the authors be certain about that? Particularly given that some nectar is stored within the nest and combined with other nectars.

**Author response:** We have now reduced this speculation to say that in varied landscapes, bees might be able to reduce or avoid toxicity by exploiting different, lower-nicotine flower species.

Thanks you again for your critical review and thoughtful suggestions.

Sincerely,

Evan Palmer-Young on behalf of the authors

**Competing Interests:** I am an author of the manuscript being reviewed

---