

RESEARCH

Open Access

Combined image and genomic analysis of high-grade serous ovarian cancer reveals PTEN loss as a common driver event and prognostic classifier

Filipe C Martins^{1,2†}, Ines de Santiago^{1†}, Anne Trinh^{1†}, Jian Xian¹, Anne Guo¹, Karen Sayal¹, Mercedes Jimenez-Linan^{3,4}, Suha Deen⁵, Kristy Driver⁶, Marie Mack⁶, Jennifer Aslop⁶, Paul D Pharoah^{6,7,8}, Florian Markowitz¹ and James D Brenton^{1,4,7,8*}

Abstract

Background: *TP53* and *BRCA1/2* mutations are the main drivers in high-grade serous ovarian carcinoma (HGSOC). We hypothesise that combining tissue phenotypes from image analysis of tumour sections with genomic profiles could reveal other significant driver events.

Results: Automatic estimates of stromal content combined with genomic analysis of TCGA HGSOC tumours show that stroma strongly biases estimates of *PTEN* expression. Tumour-specific *PTEN* expression was tested in two independent cohorts using tissue microarrays containing 521 cases of HGSOC. *PTEN* loss or downregulation occurred in 77% of the first cohort by immunofluorescence and 52% of the validation group by immunohistochemistry, and is associated with worse survival in a multivariate Cox-regression model adjusted for study site, age, stage and grade. Reanalysis of TCGA data shows that hemizygous loss of *PTEN* is common (36%) and expression of *PTEN* and expression of androgen receptor are positively associated. Low androgen receptor expression was associated with reduced survival in data from TCGA and immunohistochemical analysis of the first cohort.

Conclusion: *PTEN* loss is a common event in HGSOC and defines a subgroup with significantly worse prognosis, suggesting the rational use of drugs to target PI3K and androgen receptor pathways for HGSOC. This work shows that integrative approaches combining tissue phenotypes from images with genomic analysis can resolve confounding effects of tissue heterogeneity and should be used to identify new drivers in other cancers.

Background

High-grade serous ovarian carcinoma (HGSOC) is the most common type of ovarian cancer and accounts for the majority of mortality from the disease. However, overall survival has been virtually unchanged since the introduction of platinum-based treatments [1]. HGSOC is characterised by ubiquitous mutation of *TP53* [2] and high prevalence of *BRCA1* and *BRCA2* germ-line

mutations. With the exception of these genes, little is known about other prevalent driver events, and *BRCA1/2* and *PR* are the only robustly validated prognostic markers [3,4]. HGSOC has genomic similarities with basal-like breast tumours, which are also characterised by *TP53* and *BRCA1* alterations but additionally have *PTEN* loss [5-7]. Since *PTEN* loss is an important early initiating event in *BRCA1*-associated basal-like breast tumours [8], we hypothesised that it could also be a driver event in HGSOC.

PTEN is a phosphatase that inhibits cell proliferation induced by the PI3K pathway and acts as a tumour suppressor gene [9]. Targeted deletion of *PTEN* has been used to modulate the initiation of HGSOC and endometrioid ovarian cancer (EOC) in mouse models [10-13], but it is

*Correspondence: james.brenton@cruk.cam.ac.uk

†Equal contributors

¹Cancer Research UK Cambridge Institute, University of Cambridge, Li Ka Shing Centre, Robinson Way, CB2 0RE Cambridge, UK

⁴National Institute for Health Research Cambridge Biomedical Research Centre, Cambridge, UK

Full list of author information is available at the end of the article

unknown whether *PTEN* loss could initiate or drive the progression of HGSOC in humans. The Cancer Genome Atlas (TCGA) study on genetic and epigenetic alterations in 489 cases of HGSOC confirmed *TP53* mutation and *BRCA1* downregulation as the main driver events and identified *PTEN* alterations in only 7% of tumours [4]. However, other immunohistochemistry-based studies in smaller cohorts found much higher frequencies of *PTEN* alterations, with loss of *PTEN* expression in 15% and partial loss in 50% to 60% of cases [14-16].

HGSOC has previously been stratified into distinct molecular subgroups based on gene-expression profiles: proliferative, differentiated, immunoreactive and mesenchymal [4,17,18]. However, the clinical utility of these classifiers is unclear, particularly as individual HGSOC samples may express multiple subtype signatures and the signatures show strong effects from stromal factors [18]. These signatures are likely to be driven by cell-autonomous effects such as *BRCA1* mutation (immunoreactive subtype) and the *Let-7* pathway (mesenchymal subtype) [19,20]. Identification of other dominant cell-autonomous drivers therefore requires deconvolution of stromal signatures from those of carcinoma cells. Joint analysis of tissue images and genomic profiles has only recently been introduced to study these effects, and reveals information that cannot be attained from genomic data alone [21].

We hypothesised that *PTEN* loss might be more frequent than observed in the TCGA data set owing to confounding by samples with high stromal content. Here, we have developed bioinformatic and image analysis methods to correct gene expression signatures in the TCGA HGSOC data and tested these predictions in two independent cohorts of HGSOC cases.

Results

Estimation of *PTEN* expression in high-grade serous ovarian carcinoma is strongly influenced by stromal content

We evaluated the stromal content of 216 HGSOC samples from TCGA in a total of 302 images using a computational framework validated through scoring by an independent observer (Jonckheere–Terpstra test for trend $P = 0.001$) (Figure 1A and Additional file 1: Figure S1). The automated stromal scores were highly correlated with the expression of genes from a published stromal gene signature (Figure 1B) [22]. *ACTA2* ranked 17 in the top correlated stromal genes and was therefore selected for subsequent analysis on the basis of its known stromal-specific expression (Figure 1C) [23].

High *ACTA2* expression in the TCGA samples was directly correlated with *PTEN* expression and was never associated with low *PTEN* values, suggesting that in the majority of samples it was stromal *PTEN* expression that was being measured (Figure 1D).

Differential gene analysis comparing the upper and the lower quartiles of *PTEN* expression showed enrichment for stromal genes in tumours with high *PTEN* (Gene Set Enrichment Analysis (GSEA) Enrichment Score = 0.5). However, performing the analysis on samples with low *ACTA2* content (the first quartile) showed a more random distribution of stromal genes (GSEA ES = 0.1), suggesting this subset is less influenced by stromal content (Figure 1E,F). The wider distribution of *PTEN* expression in quartile one of *ACTA2* expression also supports the hypothesis of tumour *PTEN* loss being more prevalent than previously estimated (Figure 1D).

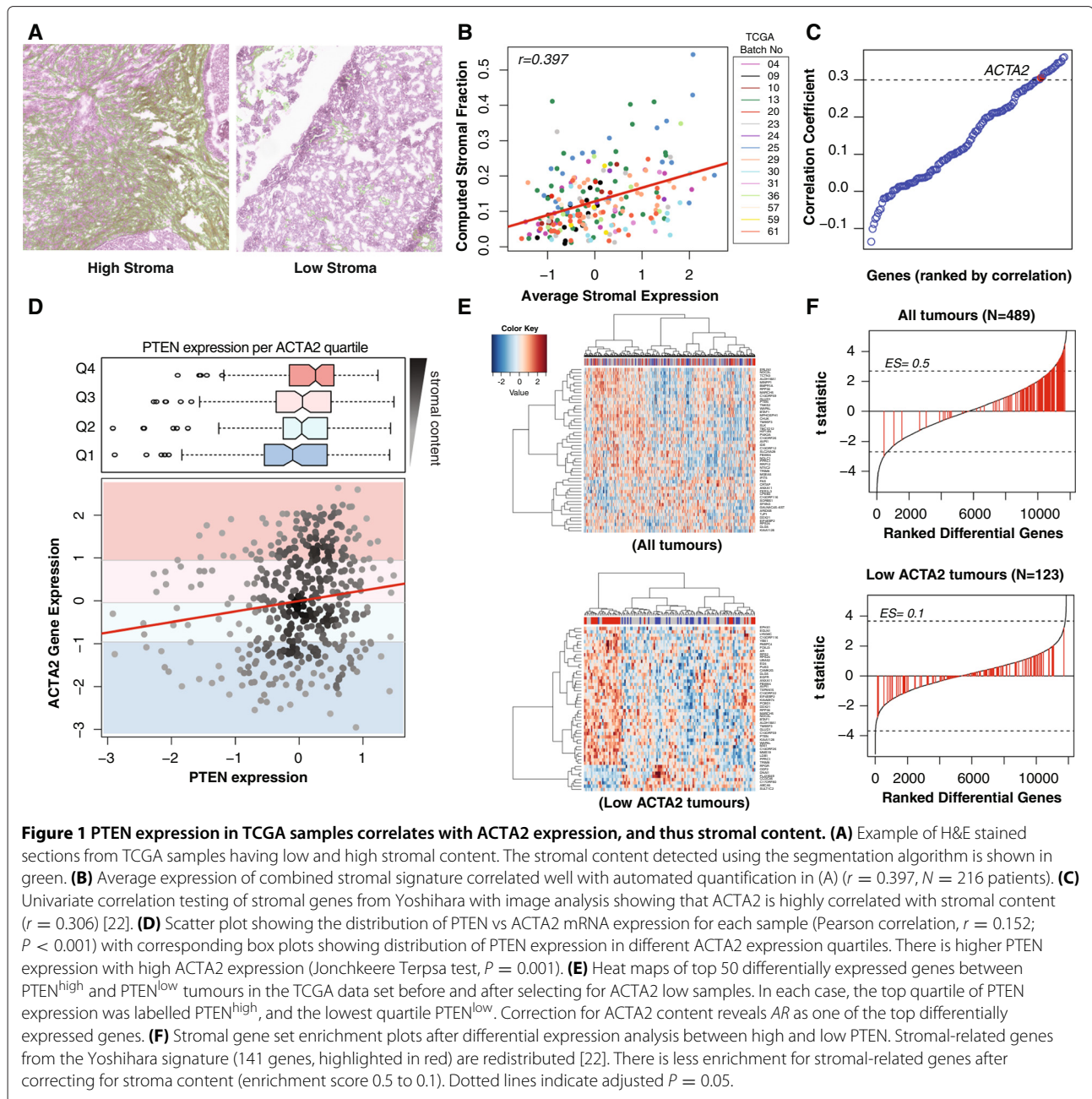
PTEN loss is prevalent and has prognostic value in high-grade serous ovarian carcinoma

To test the predictions that reduced *PTEN* expression could be a frequent event, we developed methods to quantify tumour-specific *PTEN* expression using a semi-quantitative immunofluorescence (IF) procedure. We applied this to tissue microarrays constructed from the population-based Study of Epidemiology and Risk Factors in Cancer Heredity (SEARCH) cohort ($N = 245$ HGSOCs from 516 ovarian cancer samples; Table 1) [3]. For HGSOC, *PTEN* expression was variable and showed a range of intensities, from negative (23%; $N = 49$), weak positive (32%; $N = 68$) to strongly positive fluorescence (23%; $N = 49$). Heterogeneous fluorescence was also observed in 48 samples, 22% of the cases (Figure 2A).

Reduced *PTEN* fluorescence (including negative, weak or heterogeneous expression) was associated with significantly worse survival for HGSOC compared with positive fluorescence, independent of study site, age, stage and grade (hazard ratio 1.8, 95% confidence interval (CI) 1.0 to 3.0, $P = 0.03$; Figure 2B, Additional file 2: Table S1).

Comparison of immunohistochemistry (IHC) for *PTEN* to the immunofluorescent assay showed strong correlation ($P \ll 0.001$; Additional file 3: Figure S2A). We therefore used IHC to extend the initial analysis in an independent validation cohort of incident ovarian cancer cases ($N = 276$ HGSOC cases from 507 ovarian cancer samples; Table 2). Reduced *PTEN* expression was associated with significantly worse survival for HGSOC compared with positive expression, independent of study site, age, stage and grade (hazard ratio 1.8, 95% CI 1.2 to 2.6, $N = 228$, $P = 0.002$) (Figure 2C, Additional file 2: Table S2). Combined analysis of both data sets was associated with a multivariate hazard ratio 1.5 (95% CI 1.1 to 2.0, $N = 439$, $P = 0.006$; Additional file 3: Figure S2B) for reduced *PTEN* expression.

We examined for interactions between *BRCA1* and *PTEN* loss of expression as *PTEN* loss is a frequent initiating event in *BRCA1*-associated breast tumours and is associated with basal-like breast cancer [8]. All patients with a deleterious germ-line *BRCA1* mutation



had HGSOC tumours and were marginally more likely to have negative or weak PTEN staining (Fisher's exact test $P = 0.06$, $N = 9/10$ and Additional file 2: Table S1).

PTEN is frequently deleted in high-grade serous ovarian carcinoma

TP53 is mutated in more than 95% of HGSOC cases [2,4] and has been previously implicated in controlling *PTEN* transcription [24]. We tested for *TP53* effects on *PTEN* expression by introducing a bacterial artificial chromosome transgene containing the entire human *TP53* locus

into the *TP53*-null cell line SKOV3. *PTEN* expression was independent of *TP53* complementation for both wild-type and mutated (R175H, R273H) transgenes (Figure 3A). Comparison of promoter methylation and expression of *PTEN* in the TCGA data set showed infrequent methylation of the *PTEN* promoter region in low-*PTEN* expressing cases (Figure 3B).

By contrast, loss of a single *PTEN* allele was common in HGSOC (36%; $N = 174$) in addition to the previously described homozygous deletion occurring in 6% of tumours [4] (Figure 3C). *PTEN* gene expression was

Table 1 Summary of SEARCH cohort

		HGSOC	LGSOC	MOC	EOC	CCOC	Others
Number of patients		245	35	50	97	62	27
Age at diagnosis (years)		57 (8.2)	53.9 (11.8)	53.4 (12.4)	54.5 (9.4)	55.8 (7.4)	56.2 (9)
Entry time (months)		23.5 (18.9 to 32.1)	26.4 (19.6 to 33.5)	28 (18.2 to 47.6)	28.7 (21.2 to 46.4)	29.4 (19.4 to 59.6)	27.8 (23.1 to 31.6)
Last follow-up time (months)		71.1 (45.4 to 105.6)	126.5 (85.7 to 149.1)	123 (83.1 to 170.3)	140.9 (86.5 to 171.2)	144.8 (101.6 to 208.2)	97.8 (73.7 to 139.7)
Vital status	Data available	245 (100%)	35 (100%)	50 (100%)	97 (100%)	62 (100%)	27 (100%)
	Alive	89 (36%)	27 (77%)	39 (78%)	69 (71%)	47 (76%)	16 (59%)
	Died	156 (64%)	8 (23%)	11 (22%)	28 (29%)	15 (24%)	11 (41%)
Stage	Data available	238 (97%)	33 (94%)	47 (94%)	96 (99%)	62 (100%)	24 (89%)
	I	46 (19%)	27 (82%)	42 (89%)	76 (79%)	50 (81%)	13 (54%)
	II	27 (11%)	2 (6%)	1 (2%)	13 (14%)	6 (10%)	5 (21%)
	III	139 (58%)	4 (12%)	4 (9%)	6 (6%)	5 (8%)	5 (21%)
	IV	26 (11%)	0 (0%)	0 (0%)	1 (1%)	1 (2%)	1 (4%)
Grade	Data available	201 (82%)	13 (37%)	26 (52%)	78 (80%)	26 (42%)	11 (41%)
	I	1 (0%)	11 (85%)	10 (38%)	22 (28%)	2 (8%)	1 (9%)
	II	56 (28%)	1 (8%)	14 (54%)	40 (51%)	11 (42%)	7 (64%)
	III	144 (72%)	1 (8%)	2 (8%)	16 (21%)	13 (50%)	3 (27%)
PTEN status (IF)	Data available	214 (87%)	29 (83%)	41 (82%)	89 (92%)	59 (95%)	26 (96%)
	Negative	49 (23%)	2 (7%)	12 (29%)	39 (44%)	34 (58%)	8 (31%)
	Weak positive	68 (32%)	6 (21%)	11 (27%)	27 (30%)	18 (31%)	8 (31%)
	Heterogeneous	48 (22%)	7 (24%)	2 (5%)	3 (3%)	1 (2%)	3 (12%)
	Positive	49 (23%)	14 (48%)	16 (39%)	20 (22%)	6 (10%)	7 (27%)
PTEN status (IHC)	Data available	211 (86%)	28 (80%)	44 (88%)	90 (93%)	56 (90%)	26 (96%)
	Negative	53 (25%)	3 (11%)	9 (20%)	35 (39%)	22 (39%)	4 (15%)
	Weak positive	73 (35%)	8 (29%)	5 (11%)	28 (31%)	18 (32%)	5 (19%)
	Heterogeneous	34 (16%)	3 (11%)	6 (14%)	6 (7%)	3 (5%)	3 (12%)
	Positive	51 (24%)	14 (50%)	24 (55%)	21 (23%)	13 (23%)	14 (54%)

Data are mean (SD), median (OQR), *n* (%) or *n*.

CCOC, clear cell ovarian cancer; EOC, endometrial ovarian cancer; HGSOC, high-grade serous ovarian cancer; IF, immunofluorescence; IHC, immunohistochemistry; LGSOC, low-grade serous ovarian cancer; MOC, mucinous ovarian cancer.

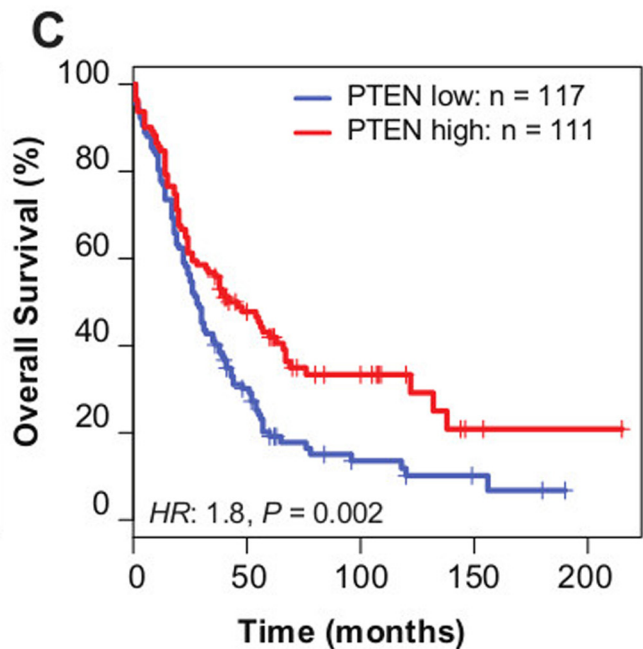
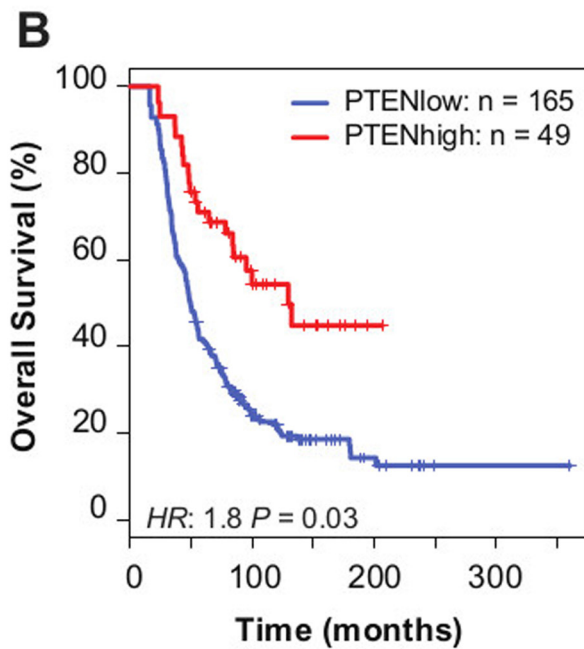
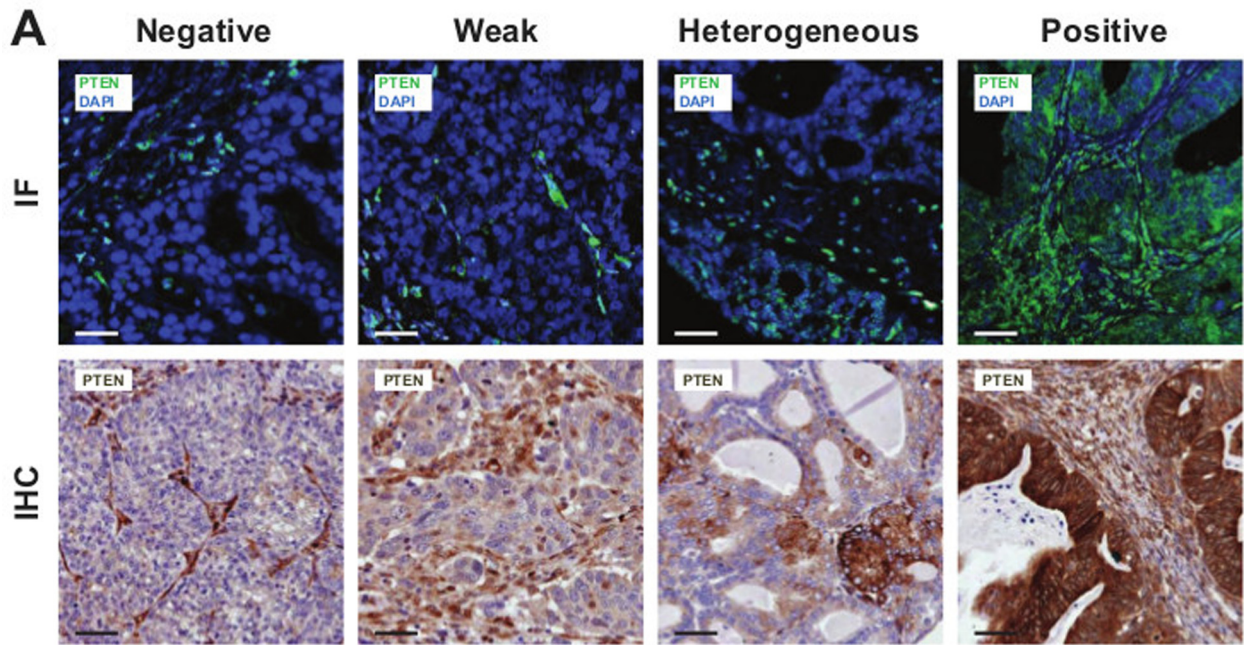


Figure 2 PTEN loss is highly prevalent in HGSOc and is associated with poor prognosis. **(A)** Examples of immunofluorescence (IF) and immunohistochemistry (IHC) staining in ovarian cancer samples for scoring of PTEN expression. **(B)** Kaplan–Meier survival curves for PTEN positive vs PTEN negative, weak or heterogeneous staining for HGSOc from the SEARCH study (using IF) (multivariate hazard ratio 1.8, 95% CI 1.0 to 3.0, $P = 0.03$) and **(C)** Kaplan–Meier survival curves for PTEN positive vs PTEN negative, weak or heterogeneous stainings for HGSOc from the Nottingham Ovarian Cancer Study (using IHC) (multivariate hazard ratio 1.8, 95% CI 1.2 to 2.6, $N = 228$, $P = 0.002$). CI, confidence interval; IF, immunofluorescence; IHC, immunohistochemistry.

Table 2 Summary of Nottingham cohort

		HGSOC	LGSOC	MOC	EOC	CCOC	Others
	Number of patients	276	40	54	62	50	24
	Age at diagnosis (years)	62.6 (10.7)	54.4 (16)	56.6 (17.8)	60.8 (11.8)	59.4 (12.2)	62 (12.2)
	Overall survival (months)	34 (17 to 60)	80 (50 to 107.2)	63 (16 to 108)	90 (59 to 120)	52.5 (30.5 to 108.8)	44 (2 to 88.5)
Vital status	Data available	272 (99%)	38 (95%)	53 (98%)	61 (98%)	48 (96%)	23 (96%)
	Alive	69 (25%)	30 (79%)	26 (49%)	36 (59%)	19 (40%)	11 (48%)
	Died	203 (75%)	8 (21%)	27 (51%)	25 (41%)	29 (60%)	12 (52%)
Stage	Data available	270 (98%)	40 (100%)	52 (96%)	62 (100%)	48 (96%)	24 (100%)
	I	41 (15%)	24 (60%)	42 (81%)	36 (58%)	28 (58%)	8 (33%)
	II	31 (11%)	3 (8%)	1 (2%)	13 (21%)	8 (17%)	1 (4%)
	III	168 (62%)	12 (30%)	7 (13%)	11 (18%)	12 (25%)	12 (50%)
	IV	30 (11%)	1 (2%)	2 (4%)	2 (3%)	0 (0%)	3 (12%)
Grade	Data available	197 (71%)	21 (52%)	39 (72%)	60 (97%)	38 (76%)	10 (42%)
	I	1 (1%)	20 (95%)	18 (46%)	10 (17%)	0 (0%)	2 (20%)
	II	4 (2%)	0 (0%)	15 (38%)	17 (28%)	0 (0%)	1 (10%)
	III	192 (97%)	1 (5%)	6 (15%)	33 (55%)	38 (100%)	7 (70%)
PTEN status (IHC)	Data available	233 (84%)	34 (85%)	40 (74%)	55 (89%)	43 (86%)	23 (96%)
	Negative	27 (12%)	1 (3%)	4 (10%)	18 (33%)	14 (33%)	5 (22%)
	Weak positive	65 (28%)	5 (15%)	17 (42%)	13 (24%)	17 (40%)	6 (26%)
	Heterogeneous	29 (12%)	0 (0%)	3 (8%)	0 (0%)	1 (2%)	5 (22%)
	Positive	112 (48%)	28 (82%)	16 (40%)	24 (44%)	11 (26%)	7 (30%)

Data are mean (SD), median (OQR), *n* (%) or *n*.

CCOC, clear cell ovarian cancer; EOC, endometrial ovarian cancer; HGSOC, high-grade serous ovarian cancer; IF, immunofluorescence; IHC, immunohistochemistry; LGSOC, low-grade serous ovarian cancer; MOC, mucinous ovarian cancer.

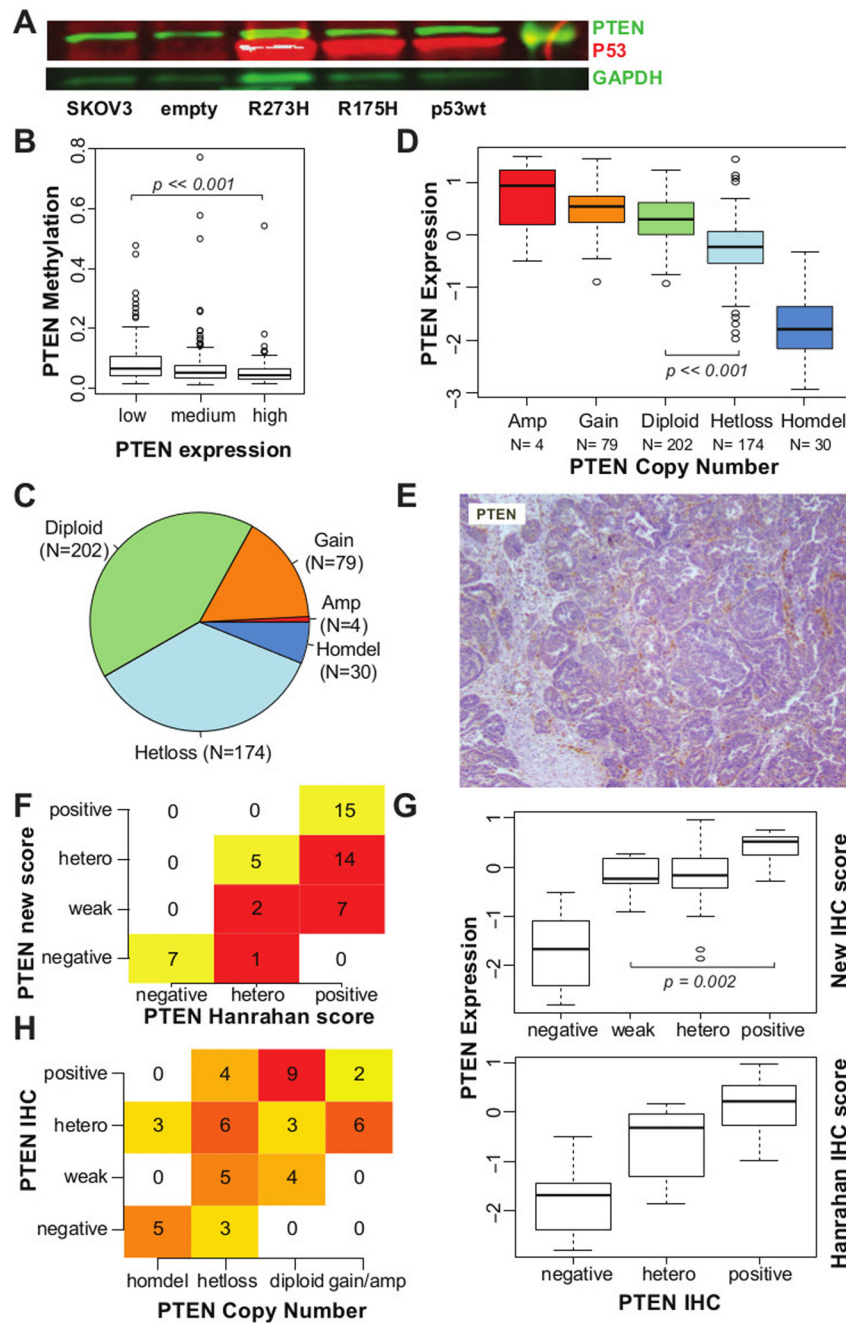


Figure 3 PTEN loss in HGSOc mainly occurs through copy number alteration (CNA). **(A)** Western blot showing the quantification of PTEN, TP53 and GAPDH (loading control) from extracts of the ovarian cancer SKOV3 cell line and complemented with wild-type and mutated TP53. **(B)** Box plot showing distribution of methylation levels according to PTEN expression levels in TCGA samples. A small increase in DNA methylation is observed in samples with lower PTEN expression (Wilcoxon test $P < 0.001$). **(C)** Pie chart showing distribution of PTEN ploidy within the TCGA data set. **(D)** Box plot showing distribution of PTEN mRNA expression according to PTEN ploidy, suggesting that CNA influences mRNA expression (t-test, diploid vs hetloss $P < 0.001$). **(E)** Example of IHC staining for PTEN scored as positive in [14], but reclassified here as weak staining, as staining in tumour cells is markedly reduced in comparison to stromal cells. **(F)** Table showing differences between scoring for PTEN IHC staining used [14] and reclassified score. Of the original 36 positive samples, 21 have been reclassified as heterogeneous or weakly positive. **(G)** Box plot showing distribution of PTEN mRNA expression within each scoring group for PTEN IHC staining, according to the Hanrahan score [14] and the reclassified score. There is a significant difference between PTEN expression in tumours classified as weak positives and positives (t-test, $P = 0.002$). **(H)** Contingency table showing significant correlation between scores for PTEN IHC staining and PTEN CNA (Fisher's exact test, $P < 0.001$). CNA, copy number alteration; IF, immunofluorescence; GAPDH, glyceraldehyde 3-phosphate dehydrogenase; hetero, heterogeneous; IHC, immunohistochemistry; TCGA, The Cancer Genome Atlas.

significantly lower when there was loss of at least one allele (Figure 3D; *t*-test, $P \ll 0.001$). To assess whether protein expression of PTEN was associated with copy number, we applied our IHC staining classification to a subgroup of 51 samples from the TCGA cohort that has been recently stained for PTEN [14]. A large number of positive samples were reclassified as weak positive (Figure 3E,F and Additional file 2: Table S3). These tumours had similar levels of *PTEN* mRNA to those with heterogeneous staining, and significantly lower levels than tumours with positive staining (Wilcoxon test, $P = 0.002$; Figure 3G), emphasising the importance of differentiating intensities in PTEN staining. Negative staining was strongly correlated with homozygous deletion, and weak or heterogeneous staining with hemizygous loss; positive staining was associated with no chromosomal loss (Fisher's exact test, $P = 0.001$; Figure 3H).

Androgen receptor expression is associated with *PTEN* expression

We analysed *PTEN* differentially expressed genes for TCGA samples with low *ACTA2* content to mitigate the effect of stromal contamination. *AR* was one of the top differentially expressed genes (Figure 1E), and this was confirmed using an orthogonal method, csSAM, which takes into account stromal content from H&E images (Additional file 4).

Protein–protein interaction data from TCGA available through cBioPortal [25] showed that the highly ranked phosphorylated proteins in the lower quartile of *PTEN* expression (defined as *PTEN* RNA-sequencing expression, *z* score < -0.5) included AKT1, AKT2 and AKT3, which reflects activation of the PI3K pathway. Additionally, another highly ranked protein expressed in this subgroup was AR. A direct link between AR and PTEN was suggested by overlaying genomic information, including copy number and gene expression, on a known protein interaction network (Figure 4A). Moreover, *AR* expression has also been associated with *PTEN* expression in prostate cancer [26]. Therefore, we hypothesised that *AR* expression was prognostically significant. Using the TCGA RNA-sequencing data, we found that low *AR* expression was associated with shorter overall survival (hazard ratio 1.5, 95% CI 1.1 to 2.1, $P = 0.02$; Figure 4B).

These results were validated experimentally in 216 samples from the SEARCH cohort. It was found that 43%, 25% and 32% of HGSOC expressed high levels of AR ($\geq 50\%$ of tumour cells), low levels of AR (<50% of tumour cells) or no AR, respectively (Figure 4C). In a multivariate analysis, we found a similar prognostic effect for expression in these samples (hazard ratio 1.7, 95% CI 1.1 to 2.4, $P = 0.01$), despite there being no strong association between AR and PTEN (chi-squared test $P = 0.63$; Figure 4D,E).

Differentiated and proliferative expression subtypes are associated with high and low *PTEN* expression

TCGA subdivided HGSOC into four subgroups based on gene expression profiles, differentiated, proliferative, mesenchymal and immunoreactive, in which the latter two were enriched for stromal cells and leukocytes (Figure 5A) [4,18].

PTEN loss is associated with activation of the PI3K pathway and consequently with proliferation. Therefore, we hypothesised that *PTEN* expression could be associated with the remaining differentiated and proliferative subgroups. By focusing on these two subgroups and categorising the raw *AR* and *PTEN* expression into tertiles, higher *PTEN* expression was associated with the differentiated subgroup (Figure 5B, chi-squared test $P = 0.02$), whilst lower *PTEN* expression was associated with the proliferative subgroup.

Discussion

In this work, we have developed and validated image analysis methods to score stromal components in tumour images automatically. We used these methods to identify tissue samples with low stromal content from TCGA, which allowed us to examine the range of *PTEN* RNA expression accurately, confirming that *PTEN* expression in HGSOC was highly variable. These observations supported our hypothesis that *PTEN* loss could be common in HGSOC and was confirmed using a validated *PTEN* antibody on tissue microarrays from two independent clinical cohorts.

Extensive genomic analysis of HGSOC has revealed common involvement of tumour suppressor genes, including *TP53*, *BRCA1* and *BRCA2*, but only rare involvement of 'actionable' oncogenic mutations. The importance of identifying driver mutations in cancer and using them for therapeutic targets has been extensively demonstrated and a robust molecular stratification of HGSOC is required to predict prognosis accurately and to support rational drug development for this disease. Previous genomic analysis of HGSOC has identified four molecular subtypes of HGSOC based on gene expression profiles: differentiated, proliferative, mesenchymal and immunoreactive [4,17,18]. However, these profiles have only weak prognostic value, are highly influenced by stromal contribution and do not have direct therapeutic implications. Cellular heterogeneity in tumour samples is a common confounder for genomic analysis and it is important to note that the spatial distribution and number of normal and tumour cells can provide important phenotypes that are not represented in genomic profiles [21,27].

In this work, by using image analysis to focus on tumour-cell-specific PTEN expression, we have shown that *PTEN* loss is a common event in HGSOC, supporting previous IHC-based studies [14-16]. Although there is

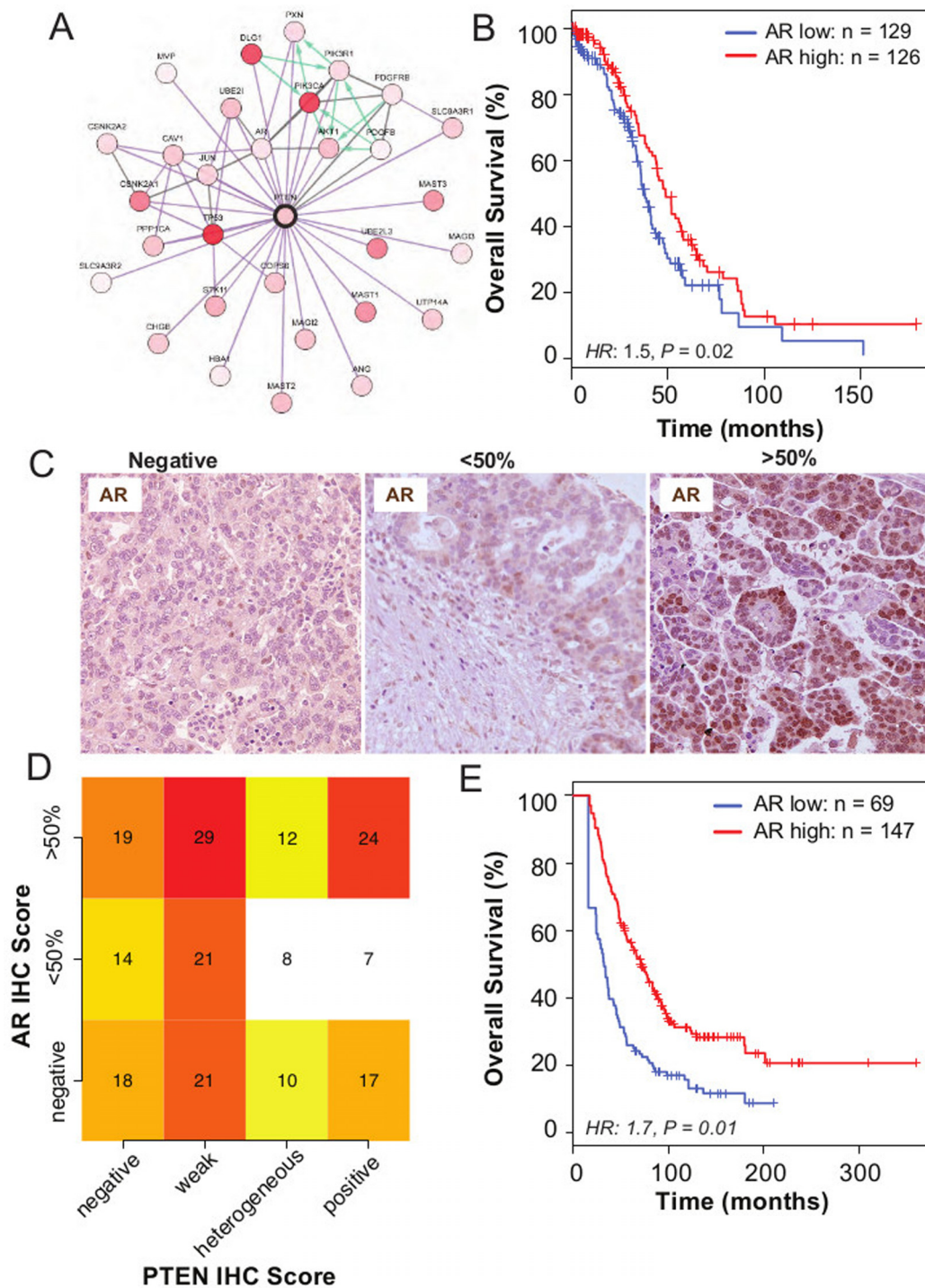
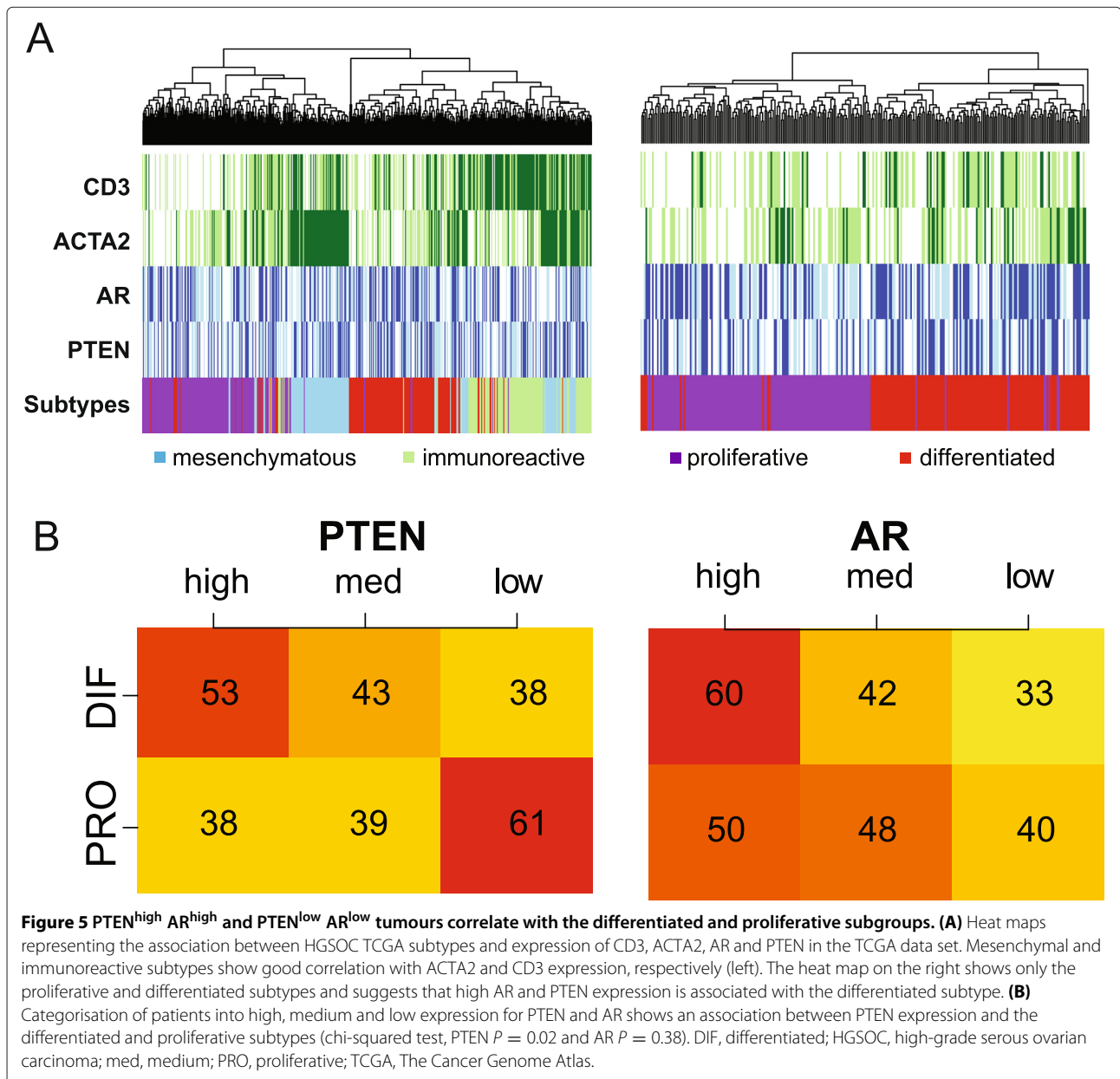


Figure 4 Androgen receptor is co-regulated with *PTEN* and is associated with good prognosis. **(A)** Protein–protein interaction network of proteins associated with high *PTEN* expression shows co-expression of *AR* and *PTEN* (figure obtained from cBioPortal website using the provisional TCGA data for ovarian serous cystadenocarcinoma). **(B)** Kaplan–Meier survival curves for AR expression show prognostic value, after dichotomising AR RNA-sequencing expression levels at the median level ($N_{\text{high}} = 126$, $N_{\text{low}} = 129$; hazard ratio 1.5, 95% CI 1.1 to 2.1, $P = 0.02$). **(C)** Examples of immunohistochemistry (IHC) AR staining of HGSOC samples. **(D)** Heat map shows no statistical association between AR and *PTEN* IHC expression in HGSOC samples from the SEARCH cohort (chi-squared test, $P = 0.63$). **(E)** Kaplan–Meier survival curves for AR positive vs AR negative for HGSOC from the SEARCH study (using IHC) (multivariate hazard ratio 1.7, 95% CI 1.1 to 2.4, $P = 0.01$). CI, confidence interval; HGSOC, high-grade serous ovarian carcinoma; HR, hazard ratio; IF, immunofluorescence; IHC, immunohistochemistry; SEARCH, Study of Epidemiology and Risk Factors in Cancer Heredity.



conflicting data on the prognostic value of *PTEN* [16,28], in our analysis of 442 HGSOC cases from two separate cohorts, we have demonstrated that *PTEN* loss or down-regulation is prognostic and is strongly associated with worse overall survival. Positive *PTEN* staining has comparable survival effects to those described for *BRCA1/2* carriers [4]. TCGA previously demonstrated homozygous deletion of *PTEN* in 6% of HGSOC cases [4], and our reanalysis of this data set additionally shows that heterozygous loss is common in tumour cells (36%) and is associated with reduced expression of *PTEN* RNA and protein.

As methylation of *PTEN* was only infrequently observed in the TCGA data, other post-transcriptional modifications may play an important role in regulating *PTEN* [29]. *PTEN* is regulated by a complex network of miRNAs and mRNAs that share the same miRNA binding site – these have been termed competing endogenous RNA (ceRNA). Also, the *PTEN* pseudogene *PTENP1* can indirectly regulate *PTEN* expression [30]. Further studies will be needed to clarify whether the heterogeneous expression patterns observed can be explained by these post-transcriptional modifications, tumour heterogeneity or upstream genetic changes.

PTEN gene dosage is finely regulated and small expression changes may have important phenotypic effects [31]. In our analysis, weak expression of PTEN had similar detrimental effects on survival as total loss of expression. These survival effects are consistent with models suggesting haploinsufficiency phenotypes for *PTEN* [8,32]. Previous analyses of early serous tubal carcinomas showed that 33% ($N = 4/12$) of cases had complete loss of PTEN expression and a further 33% had heterogeneous loss [15]. Together with our observations, these data strongly support the contention that *PTEN* is a prevalent early driver event in HGSOC. This is further supported by data from mouse models where the addition of *PTEN* deletion to alteration of *DICER*, or *TP53* and *BRCA1*, was critical for initiation and progression of HGSOC [10,11].

In breast cancer, *PTEN* loss is more prevalent in association with *BRCA1* germ-line mutations, and tumour analysis at the single-cell level has shown that it is the most common initiating event in *BRCA1*-associated breast tumours [7,8]. Owing to our small sample size, our results suggest, but do not confirm, that *PTEN* loss is more prevalent in *BRCA1*-associated HGSOC.

We also show that the *PTEN*^{high} subgroup with improved outcome was associated with the differentiated expression signature, whereas the poor prognosis *PTEN*^{low} subgroup was associated with the proliferative signature. The stratification of HGSOC patients into *PTEN*^{high} and *PTEN*^{low} subgroups may have important therapeutic implications. Firstly, *PTEN* loss activates the PI3K pathway and tumours that present reduced expression of *PTEN* may respond to PI3K inhibitors. Additionally, *PTEN* loss has also been associated with response to PARP inhibitors in endometrial cell lines [33] and a mechanistic basis for this has been suggested by recent findings that implicate nuclear PTEN in the regulation of homologous recombination [34]. Recent data suggest strong activity for compound PARP-PI3K inhibition in prostate and breast cancers and these drugs may be effective for the *PTEN*^{low} HGSOC subgroup [35,36].

The important association between *AR* and *PTEN* has previously been demonstrated for prostate cancer but not tested for ovarian cancer [26]. By correcting gene signatures from TCGA for stromal content, we showed that *AR* is co-expressed with *PTEN* and higher levels of *AR* expression were associated with longer overall survival. This is consistent with a recent meta-analysis that also suggested a better overall survival for patients with breast tumours with higher androgen receptor (AR) expression, independent of Estrogen Receptor (ER), and new clinical trials targeting AR in breast cancer have already been put in place [37]. However, our tissue microarray data showed a weaker correlation between PTEN and AR protein expression than observed in the genomic data. This may reflect the possible role of post-transcriptional modifications on

protein expression, and the large degree of intra-tumour heterogeneity observed in IHC staining. Clinical trials with AR antagonists in ovarian cancer performed over 20 years ago suggested that only a small subset of tumours may respond to these drugs [38]. Our results suggest that stratification based on AR expression may allow for the identification of a potentially responsive high AR subset, which is associated with better prognosis.

Conclusions

PTEN loss, together with *TP53* and *BRCA1* alterations, is a common event in HGSOC and, in combination with *AR*, allows for a prognostic stratification of HGSOC subgroups, which may be amenable to targeted therapies. We have demonstrated that important genomic events that are confounded by stromal contribution in tumour samples, such as PTEN loss, can be resolved by integrating image analysis with protein and gene expression. Such bioinformatic approaches are broadly applicable and could lead to important discoveries in other diseases where heterogeneity of the tissue may be a confounding issue in genomic analyses.

Materials and methods

Overview of data sets used

Analyses were performed on three data sets:

1. The publicly available TCGA, from which H&E images, mRNA expression, genomic data including copy number variation and DNA methylation data, and corresponding clinical information for 489 HGSOC patient samples were obtained. This was downloaded from the TCGA data portal [4] and cBioPortal [25]. A total of 51 IHC samples for PTEN from this data set were obtained from Hanrahan et al. [14] and used to correlate genomic information with protein expression [14].
2. SEARCH data set with tissue samples and corresponding clinical information for 245 HGSOC samples (out of 516 ovarian cancer cases; Table 1). Patients were recruited after a diagnosis of ovarian cancer and if they were able to consent for participation in the study [3]. Key demographical and clinical data on the patients, including *BRCA1* germ-line mutation status, were presented anonymously.
3. Nottingham Ovarian Cancer Study (NOT) data set with tissue samples and corresponding clinical data from 276 HGSOC samples (out of 507 ovarian cancer cases; Table 2). This is a retrospective study of ovarian cancer cases diagnosed between 1991 and 2011 [3]. For this study, the institutional research ethics boards (East Of England Cambridgeshire REC (for SEARCH) and Derbyshire REC (for NOT)) waived the need to

obtain consent. Both local human research investigation committees approved each study.

Correcting gene expression profiles using image analysis

Scoring by eye for overall image quality (based on discolouration, folding over of the mounted section and completeness of the section) was performed on 312 slides, of which 46 were discarded owing to poor quality, leaving 266 slides from 194 patients. Based on quality, 302 H&E slides from 216 patient samples in the TCGA database were selected, of which an observer (FCM) manually scored 266 for stromal content. Images were segmented by first applying an entropy filter to remove the background from an image, followed by colour deconvolution according to Ruifroks' method (Additional file 5) [39]. The haematoxylin channel was subtracted from the eosin channel, leaving a raw stromal signal. Otsu's thresholding and smoothing was then performed to estimate a stromal fraction [40]. These values along with stromal gene scores were used to predict the stromal content in the remaining TCGA samples. Correlation between automated and manual scoring was performed using the Jonckheere–Terpstra test for trend. Gene-expression-based validation of the method was performed by generating a stromal gene list [22] and performing univariate Pearson's correlation testing between stromal quantification and expression.

Differential gene expression analysis

PTEN expression was categorised into quartiles and the top and bottom quartiles were used for differential expression analysis, which was performed using either the limma package [41] or an orthogonal method, csSAM [42], on the complete TCGA set ($N = 489$) and in the subset of low ACTA2 tumours ($N = 122$). Differentially expressed genes were selected after correction for the false discovery rate for multiple testing and using a cut-off $P < 0.05$. The top 50 differentially expressed genes were selected for further unsupervised hierarchical clustering and visualisation using the made4 library [43]. Unsupervised hierarchical clustering was performed using the Euclidean distance metric and Ward's method.

Statistical tests and survival analysis

All statistical analysis were performed using R [44]. All the R code necessary to replicate the data analysis is available in Additional file 6. Survival analysis was performed using a Cox proportional hazards model. Since some patients died just after diagnosis and were not included in the SEARCH study, left truncation was included in the analysis of this cohort, which means that we took into account both the time from diagnosis to entry into the study and the time from entry into the study to censoring or death.

PTEN immunostaining, scanning and scoring of SEARCH and NOT samples

IHC was carried out using tissue microarrays obtained from Formalin Fixed, Paraffin-Embedded (FFPE) tissues and primary antibodies for PTEN and AR (Cell Signaling, Danvers, MA, USA; PTEN – Clone 138G6; AR – Clone D6F11). The staining protocol for PTEN clone 138G6 was previously described by FCM [8] and validated for specificity and sensitivity using *Pten* knockout mice and xenograft tissue from PTEN-positive and -negative human cancer cell lines (see Supplementary Figure 1 in [8]). Heat-induced antigen retrieval was carried out in 10 mmol^{-1} citric acid (pH 6.0) in a pressure cooker at 120°C for 10 min. Sections were incubated with PTEN or AR antibodies overnight, diluted 1:100 in 5% goat serum, followed by incubation with anti-rabbit biotinylated secondary antibody for 1 h and peroxidase-conjugated avidin-biotin complexes (Elite ABC; Vector Laboratories, Burlingame, CA, USA). Formed immunocomplexes were visualised using diaminobenzidine (DAKO, Glostrup, Denmark, EU) and slides were counterstained with haematoxylin. Sections were rinsed in PBS between each step.

IF was carried out by adding a tyramide signal amplification step (Perkin-Elmer) after the secondary antibody, followed by incubation with Alexa Fluor 647-conjugated streptavidin (Invitrogen). Nuclei were counterstained with 4',6-diamidino-2-phenylindole (DAPI) (Invitrogen).

IF and IHC samples were stored at -20°C and room temperature (RT), respectively, for at least 48 h before image analysis. For IHC, an Ariol scanning system (Leica, Wetzlar, Germany, EU) was used to obtain the digital images. For IF, images were acquired with a SP5 Leica Confocal Microscope, $\times 40$ plan objective, and analysed by Leica software (Leica Application Suite, Advanced Fluorescence 2.2.0). Scoring was performed according to intensity (using stromal cells as internal positive controls) and percentage of stained cells by two independent observers (FCM and MJL). We subdivided tumours as negative (no staining in any tumour cell), weak positive (all tumour cells weakly stained compared to stromal cells), positive (all tumour and stromal cells equally stained) or heterogeneous (combination of positive and negative/weak staining) staining.

Western-blot PTEN quantification in relation to TP53 status

Western blot analysis was performed for extracts from SKOV3 ovarian cancer cell lines (ATCC; HTB-77) and derivatives obtained by Bacterial artificial chromosome (BAC) lipofectamine transfection. A BAC modification kit (Gene Bridges, Heidelberg, Germany, EU; catalogue number K002) was used to obtain the BAC clones (empty control and with R175H or R273H mutations) from the original BAC containing wild-type *TP53*

(CTD-3049A20; Invitrogen, catalogue number 96012). Whole-cell extracts were collected after scraping cells in protein lysis buffer containing 50 mmol⁻¹ Tris-HCl (pH 7.4), 150 mmol⁻¹ NaCl, 5 mmol⁻¹ ethylenediaminetetraacetic acid (EDTA), 50 mmol⁻¹ NaF, 0.5% NP40, one Complete™ Mini and EDTA free tablet per 50 ml. Protein concentrations were determined using Bio-Rad protein assay kit (Hercules, CA, USA). Equal concentrations were resolved by sodium dodecyl sulphate polyacrylamide gel electrophoresis (SDS-PAGE), transferred to Immobilon-fluorescence PVDF membrane (Millipore, Bedford, MA, USA), blocked and probed with anti-human TP53 (clone DO-1, Santa Cruz, Dallas, Texas, USA; 1:2,000; overnight incubation at 4°C), anti-human PTEN (clone 138G6, Cell Signaling; 1:1,000; overnight incubation at 4°C) and anti GAPDH (Cell Signaling; 1:5,000; overnight incubation at 4°C) antibodies. IRDye800-conjugated anti-rabbit immunoglobulin G (IgG) and IRDye700-conjugated anti-mouse IgG (Li-Cor, Lincoln, NE, USA; 1:5,000 and 1:10,000 dilutions; incubated at RT for 1 h) were used as secondary antibodies. Signal intensities were analysed by using the Odyssey infrared image system (Li-Cor, Lincoln, NE, USA). Two replicates of the experiment were performed and similar results were obtained.

Additional files

Additional file 1: Figure S1. Automated quantification of stroma correlates well with manual scoring. Good correlation was observed between automated stromal scoring and by eye scoring ($r = 0.593$, $N = 266$ images; Jonckheere–Terpstra test for trend $P = 0.001$).

Additional file 2: Supplementary Tables. Pathological and clinical data from SEARCH, NOT and Hanrahan cohorts. NOT, Nottingham Ovarian Cancer Study; SEARCH, Study of Epidemiology and Risk Factors in Cancer Heredity.

Additional file 3: Figure S2. PTEN IHC staining correlates with PTEN IF staining and shows prognostic value. **(A)** Contingency table showing strong correlation between scores obtained from PTEN IF and IHC stainings (chi-squared test, $P \ll 0.001$). **(B)** Combined SEARCH and NOT studies (using IHC) (multivariate hazard ratio 1.5, 95% CI 1.1 to 2.0), $P = 0.006$. CI, confidence interval; IF, immunofluorescence; IHC, immunohistochemistry; NOT, Nottingham Ovarian Cancer Study; SEARCH, Study of Epidemiology and Risk Factors in Cancer Heredity.

Additional file 4: Supplementary Information. Supplementary information includes all code for the generation of plots and statistical analyses in R.

Additional file 5: Code for image Analysis. Code used to estimate stromal content in TCGA histopathological images.

Additional file 6: R code used for data analysis and to obtain all the results and figures in this publication. R code.

Abbreviations

AR, androgen receptor; CI, confidence interval; CNA, copy number alteration; EOC, endometrioid ovarian cancer; GAPDH, glyceraldehyde 3-phosphate dehydrogenase; GSEA, Gene Set Enrichment Analysis; H&E, hematoxylin and eosin; HGSOC, high-grade serous ovarian carcinoma; IF, immunofluorescence; IHC, immunohistochemistry; miRNA, microRNA; NOT, Nottingham Ovarian Cancer Study; PBS, phosphate-buffered saline; SEARCH, Study of Epidemiology and Risk Factors in Cancer Heredity; TCGA, The Cancer Genome Atlas.

Competing interests

The authors declare that they have no competing interests.

Authors' contributions

FCM, IS, AT, FM and JDB designed the study, interpreted the data and wrote the manuscript. FCM, JX, AG, KS and MJL performed the lab experiments and pathology analysis. IS, AT, PDP and FM performed the bioinformatic and survival analyses. KD, MM, JA and PDP provided SEARCH samples and clinical data. SD provided Nottingham samples and clinical data. All authors read and approved the final manuscript.

Authors' information

FM and JDB are joint corresponding authors.

Acknowledgements

This work was supported by Cancer Research UK [grant numbers A15601, A17197, A16561, A10124]; the University of Cambridge; National Institute for Health Research Cambridge Biomedical Research Centre and Academic Clinical Fellowship scheme (FCM); Cambridge Experimental Cancer Medicine Centre and Hutchison Whampoa Limited. The funders had no role in study design, data collection and analysis, decision to publish, or preparation of the manuscript.

Author details

¹Cancer Research UK Cambridge Institute, University of Cambridge, Li Ka Shing Centre, Robinson Way, CB2 0RE Cambridge, UK. ²Department of Obstetrics and Gynaecology, University of Cambridge, The Rosie Hospital, Robinson Way, CB2 0SW Cambridge, UK. ³Department of Pathology, Box 232, Addenbrooke's Hospital, Hills Road, CB2 0QQ Cambridge, UK. ⁴National Institute for Health Research Cambridge Biomedical Research Centre, Cambridge, UK. ⁵Department of Pathology, Nottingham University Hospital, Nottingham, UK. ⁶Strangeways Research Laboratories, University of Cambridge, 2 Worts' Causeway, CB1 8RN Cambridge, UK. ⁷Department of Oncology, University of Cambridge, Hutchison/MRC Research Centre, Hills Road, CB2 0XZ Cambridge, UK. ⁸Cambridge Experimental Cancer Medicine Centre, Cambridge, UK.

Received: 16 June 2014 Accepted: 3 November 2014

Published online: 17 December 2014

References

- Vaughan S, Coward JI, Bast RC Jr, Berchuck A, Berek JS, Brenton JD, Coukos G, Crum CC, Drapkin R, Etemadmoghadam D, Friedlander M, Gabra H, Kaye SB, Lord CJ, Lengyel E, Levine DA, McNeish IA, Menon U, Mills GB, Nephew KP, Oza AM, Sood AK, Stronach EA, Walczak H, Bowtell DD, Balkwill FR: **Rethinking ovarian cancer: recommendations for improving outcomes.** *Nat Rev Cancer* 2011, **11**:719–725.
- Ahmed AA, Etemadmoghadam D, Temple J, Lynch AG, Riad M, Sharma R, Stewart C, Fereday S, Caldas C, Defazio A, Bowtell D, Brenton JD: **Driver mutations in TP53 are ubiquitous in high grade serous carcinoma of the ovary.** *J Pathol* 2010, **221**:49–56.
- Sieh W, Köbel M, Longacre TA, Bowtell DD, deFazio A, Goodman MT, Høgdall E, Deen S, Wentzensen N, Moysich KB, Brenton JD, Clarke BA, Menon U, Gilks CB, Kim A, Madore J, Fereday S, George J, Galletta L, Lurie G, Wilkens LR, Carney ME, Thompson PJ, Matsuno RK, Kjær SK, Jensen A, Høgdall C, Kalli KR, Fridley BL, Keeney GL, et al: **Hormone-receptor expression and ovarian cancer survival: an ovarian tumor tissue analysis consortium study.** *Lancet Oncol* 2013, **14**:853–862.
- The Cancer Genome Atlas Network: **Integrated genomic analyses of ovarian carcinoma.** *Nature* 2011, **474**:609–615.
- The Cancer Genome Atlas Network: **Comprehensive molecular portraits of human breast tumours.** *Nature* 2012, **490**:61–70.
- Saal LH, Holm K, Maurer M, Memeo L, Su T, Wang X, Yu JS, Malmström P-O, Mansukhani M, Enoksson J, Hibshoosh H, Borg A, Parsons R: **PIK3CA mutations correlate with hormone receptors, node metastasis, and ERBB2, and are mutually exclusive with PTEN loss in human breast carcinoma.** *Cancer Res* 2005, **65**:2554–2559.
- Saal LH, Grubberger-Saal SK, Persson C, Lövgren K, Jumppanen M, Staaf J, Jönsson G, Pires MM, Maurer M, Holm K, Koujak S, Subramaniam S, Vallon-Christersson J, Olsson H, Su T, Memeo L, Ludwig T, Ethier SP, Krogh M, Szabolcs M, Murty VVS, Isola J, Hibshoosh H, Parsons R, Borg A:

- Recurrent gross mutations of the PTEN tumor suppressor gene in breast cancers with deficient DSB repair.** *Nat Genet* 2008, **40**:102–107.
8. Martins FC, De S, Almendro V, Gönen M, Park SY, Blum JL, Herlihy W, Ethington G, Schnitt SJ, Tung N, Garber JE, Fettes K, Michor F, Polyak K: **Evolutionary pathways in BRCA1-associated breast tumors.** *Cancer Discov* 2012, **2**:503–511.
 9. Cully M, You H, Levine AJ, Mak TW: **Beyond PTEN mutations: the PI3K pathway as an integrator of multiple inputs during tumorigenesis.** *Nat Rev Cancer* 2006, **6**:184–192.
 10. Kim J, Coffey DM, Creighton CJ, Yu Z, Hawkins SM, Matzuk MM: **High-grade serous ovarian cancer arises from Fallopian tube in a mouse model.** *Proc Natl Acad Sci USA* 2012, **109**:3921–3926.
 11. Perets R, Wyant GA, Muto KW, Bijron JG, Poole BB, Chin KT, Chen JYH, Ohman AW, Stepule CD, Kwak S, Karst AM, Hirsch MS, Setlur SR, Crum CP, Dinulescu DM, Drapkin R: **Transformation of the Fallopian tube secretory epithelium leads to high-grade serous ovarian cancer in Brca1;Tp53;Pten models.** *Cancer Cell* 2013, **24**:751–765.
 12. Dinulescu DM, Ince TA, Quade BJ, Shafer SA, Crowley D, Jacks T: **Role of K-ras and Pten in the development of mouse models of endometriosis and endometrioid ovarian cancer.** *Nat Med* 2005, **11**:63–70.
 13. Wu R, Hendrix-Lucas N, Kuick R, Zhai Y, Schwartz DR, Akyol A, Hanash S, Misk DE, Katabuchi H, Williams BO, Fearon ER, Cho KR: **Mouse model of human ovarian endometrioid adenocarcinoma based on somatic defects in the Wnt/ β -catenin and PI3K/Pten signaling pathways.** *Cancer Cell* 2007, **11**:321–333.
 14. Hanrahan AJ, Schultz N, Westfal ML, Sakr RA, Giri DD, Scarperi S, Janakiraman M, Janakiraman M, Olvera N, Stevens EV, She Q-B, Aghajanian C, King TA, de Stanchina E, Spriggs DR, Heguy A, Taylor BS, Sander C, Rosen N, Levine DA, Solit DB: **Genomic complexity and AKT dependence in serous ovarian cancer.** *Cancer Discov* 2012, **2**:56–67.
 15. Roh MH, Yassin Y, Miron A, Mehra KK, Mehrad M, Monte NM, Mutter GL, Nucci MR, Ning G, Mckeon FD, Hirsch MS, Wa X, Crum CP: **High-grade fibrial-ovarian carcinomas are unified by altered p53, PTEN and PAX2 expression.** *Mod Pathol* 2010, **23**:1316–1324.
 16. Madore J, Ren F, Filali-Mouhim A, Sanchez L, Köbel M, Tonin PN, Huntsman D, Provencher DM, Mes-Masson A-M: **Characterization of the molecular differences between ovarian endometrioid carcinoma and ovarian serous carcinoma.** *J Pathol* 2010, **220**:392–400.
 17. Tothill RW, Tinker AV, George J, Brown R, Fox SB, Lade S, Johnson DS, Trivett MK, Etemadmoghadam D, Locandro B, Traficante N, Fereday S, Hung JA, Chiew Y-E, Haviv I, AOCSSG, Gertig D, DeFazio A, Bowtell DDL: **Novel molecular subtypes of serous and endometrioid ovarian cancer linked to clinical outcome.** *Clin Cancer Res* 2008, **14**:5198–5208.
 18. Verhaak RGW, Tamayo P, Yang J-Y, Hubbard D, Zhang H, Creighton CJ, Fereday S, Lawrence M, Carter SL, Mermel CH, Kostic AD, Etemadmoghadam D, Saksena G, Cibulskis K, Duraisamy S, Levanon K, Sougnez C, Tsherniak A, Gomez S, Onofrio R, Gabriel S, Chin L, Zhang N, Spellman PT, Zhang Y, Akbani R, Hoadley KA, Kahn A, Köbel M, Huntsman D, et al: **Prognostically relevant gene signatures of high-grade serous ovarian carcinoma.** *J Clin Invest* 2013, **123**:517–525.
 19. Press JZ, De Luca A, Boyd N, Young S, Troussard A, Ridge Y, Kaurah P, Kalloger SE, Blood KA, Smith M, Spellman PT, Wang Y, Miller DM, Horsman D, Faham M, Gilks CB, Gray J, Huntsman DG: **Ovarian carcinomas with genetic and epigenetic BRCA1 loss have distinct molecular abnormalities.** *BMC Cancer* 2008, **8**:17.
 20. Helland Å, Anglesio MS, George J, Cowin PA, Johnstone CN, House CM, Sheppard KE, Etemadmoghadam D, Melynk N, Rustgi AK, Phillips WA, Johnson H, Holm R, Kristensen GB, Birrer MJ, AOCSSG, Pearson RB, Borresen-Dale A-L, Huntsman DG, deFazio A, Creighton CJ, Smyth GK, Bowtell DDL: **Deregulation of MYCN, LIN28B and LET7 in a molecular subtype of aggressive high-grade serous ovarian cancers.** *PLoS One* 2011, **6**:18064.
 21. Yuan Y, Failmezger H, Rueda OM, Ali HR, Gräf S, Chin S-F, Schwarz RF, Curtis C, Dunning MJ, Bardwell H, Johnson N, Doyle S, Turashvili G, Provenzano E, Aparicio S, Caldas C, Markowitz F: **Quantitative image analysis of cellular heterogeneity in breast tumors complements genomic profiling.** *Sci Transl Med* 2012, **4**:157–143.
 22. Yoshihara K, Shahmoradgol M, Martínez E, Vegesna R, Kim H, Torres-García W, Treviño V, Shen H, Laird PW, Levine DA, Carter SL, Getz G, Stemke-Hale K, Mills GB, Verhaak RGW: **Inferring tumour purity and stromal and immune cell admixture from expression data.** *Nat Commun* 2013, **4**:2612.
 23. Leinster DA, Kulbe H, Everitt G, Thompson R, Perretti M, Gavins FNE, Cooper D, Gould D, Ennis DP, Lockley M, McNeish IA, Nourshargh S, Balkwill FR: **The peritoneal tumour microenvironment of high-grade serous ovarian cancer.** *J Pathol* 2012, **227**:136–145.
 24. Stambolic V, MacPherson D, Sas D, Lin Y, Snow B, Jang Y, Benchimol S, Mak TW: **Regulation of PTEN transcription by p53.** *Mol Cell* 2001, **8**:317–325.
 25. Cerami E, Gao J, Dogrusoz U, Gross BE, Sumer SO, Aksoy BA, Jacobsen A, Byrne CJ, Heuer ML, Larsson E, Antipin Y, Reva B, Goldberg AP, Sander C, Schultz N: **The cBio cancer genomics portal: an open platform for exploring multidimensional cancer genomics data.** *Cancer Discov* 2012, **2**:401–404.
 26. Carver BS, Chapinski C, Wongvipat J, Hieronymus H, Chen Y, Chandralapaty S, Arora VK, Le C, Koutcher J, Scher H, Scardino PT, Rosen N, Sawyers CL: **Reciprocal feedback regulation of PI3K and androgen receptor signaling in PTEN-deficient prostate cancer.** *Cancer Cell* 2011, **19**:575–586.
 27. Beck AH, Sangoi AR, Leung S, Marinelli RJ, Nielsen TO, van de Vijver MJ, West RB, van de Rijn M, Koller D: **Systematic analysis of breast cancer morphology uncovers stromal features associated with survival.** *Sci Transl Med* 2011, **3**:108–113.
 28. Kolasa IK, Rembiszewska A, Janiec-Jankowska A, Dansonka-Mieszkowska A, Lewandowska AM, Konopka B, Kupryjańczyk J: **PTEN mutation, expression and LOH at its locus in ovarian carcinomas. Relation to TP53, K-RAS and BRCA1 mutations.** *Gynecol Oncol* 2006, **103**:692–697.
 29. Tay Y, Kats L, Salmena L, Weiss D, Tan SM, Ala U, Karreth F, Poliseno L, Provero P, Di Cunto F, Liebermann J, Rigoutsos I, Pandolfi PP: **Coding-independent regulation of the tumor suppressor PTEN by competing endogenous mRNAs.** *Cell* 2011, **147**:344–357.
 30. Poliseno L, Salmena L, Zhang J, Carver B, Haveman WJ, Pandolfi PP: **A coding-independent function of gene and pseudogene mRNAs regulates tumour biology.** *Nature* 2010, **465**:1033–1038.
 31. Alimonti A, Carracedo A, Clohessy JG, Trotman LC, Nardella C, Egia A, Salmena L, Sampieri K, Haveman WJ, Brogi E, Richardson AL, Zhang J, Pandolfi PP: **Subtle variations in PTEN dose determine cancer susceptibility.** *Nat Genet* 2010, **42**:454–458.
 32. Kwabi-Addo B, Giri D, Schmidt K, Podsypanina K, Parsons R, Greenberg N, Ittmann M: **Haploinsufficiency of the PTEN tumor suppressor gene promotes prostate cancer progression.** *Proc Natl Acad Sci USA* 2001, **98**:11563–11568.
 33. Mendes-Pereira AM, Martin SA, Brough R, McCarthy A, Taylor JR, Kim J-S, Waldman T, Lord CJ, Ashworth A: **Synthetic lethal targeting of PTEN mutant cells with PARP inhibitors.** *EMBO Mol Med* 2009, **1**:315–322.
 34. Bassi C, Ho J, Srikumar T, Dowling RJO, Gorrini C, Miller SJ, Mak TW, Neel BG, Raught B, Stambolic V: **Nuclear PTEN controls DNA repair and sensitivity to genotoxic stress.** *Science* 2013, **341**:395–399.
 35. Juvekar A, Burga LN, Hu H, Lunsford EP, Ibrahim YH, Balmaña J, Rajendran A, Papa A, Spencer K, Lyssiotis CA, Nardella C, Pandolfi PP, Baselga J, Scully R, Asara JM, Cantley LC, Wulf GM: **Combining a PI3K inhibitor with a PARP inhibitor provides an effective therapy for BRCA1-related breast cancer.** *Cancer Discov* 2012, **2**:1048–1063.
 36. González-Billalabeitia E, Seitzer N, Song SJ, Song MS, Patnaik A, Liu X-S, Epping MT, Papa A, Hobbs RM, Chen M, Lunardi A, Ng C, Webster KA, Signoretti S, Loda M, Asara JM, Nardella C, Clohessy JG, Cantley LC, Pandolfi PP: **Vulnerabilities of PTEN-TP53-deficient prostate cancers to compound PARP-PI3K inhibition.** *Cancer Discov* 2014, **4**:896–904.
 37. Vera-Badillo FE, Templeton AJ, de Gouveia P, Diaz-Padilla I, Bedard PL, Al-Mubarak M, Seruga B, Tannock IF, Ocana A, Amir E: **Androgen receptor expression and outcomes in early breast cancer: a systematic review and meta-analysis.** *J Natl Cancer Inst* 2014, **106**:319.
 38. Tumolo S, Rao BR, van der Burg ME, Guastalla JP, Renard J, Vermorken JB: **Phase II trial of flutamide in advanced ovarian cancer: an EORTC Gynaecological Cancer Cooperative Group study.** *Eur J Cancer* 1994, **30A**:911–914.
 39. Ruifrok AC, Johnston DA: **Quantification of histochemical staining by color deconvolution.** *Anal Quant Cytol Histol* 2001, **23**:291–299.
 40. Otsu N: **Threshold selection method from gray-level histograms.** *IEEE Trans Syst Man Cybern* 1979, **9**:62–66.

41. Smyth GK, Michaud J, Scott HS: **Use of within-array replicate spots for assessing differential expression in microarray experiments.** *Bioinformatics* 2005, **21**:2067–2075.
42. Shen-Orr SS, Tibshirani R, Khatri P, Bodian DL, Staedtler F, Perry NM, Hastie T, Sarwal MM, Davis MM, Butte AJ: **Cell type-specific gene expression differences in complex tissues.** *Nat Methods* 2010, **7**:287–289.
43. Culhane AC, Thioulouse J, Perrière G, Higgins DG: **Made4: an R package for multivariate analysis of gene expression data.** *Bioinformatics* 2005, **21**:2789–2790.
44. R Core Team: **R: A language and environment for statistical computing.** R Foundation for Statistical Computing, Vienna, Austria: 2013 [<http://www.r-project.org>]

doi:10.1186/s13059-014-0526-8

Cite this article as: Martins *et al.*: Combined image and genomic analysis of high-grade serous ovarian cancer reveals PTEN loss as a common driver event and prognostic classifier. *Genome Biology* 2014 **15**:526.

**Submit your next manuscript to BioMed Central
and take full advantage of:**

- Convenient online submission
- Thorough peer review
- No space constraints or color figure charges
- Immediate publication on acceptance
- Inclusion in PubMed, CAS, Scopus and Google Scholar
- Research which is freely available for redistribution

Submit your manuscript at
www.biomedcentral.com/submit

