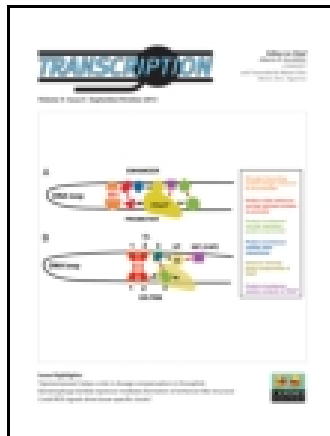


On: 07 August 2015, At: 08:51

Publisher: Taylor & Francis

Informa Ltd Registered in England and Wales Registered Number: 1072954 Registered office: 5 Howick Place, London, SW1P 1WG



## Transcription

Publication details, including instructions for authors and subscription information:

<http://www.tandfonline.com/loi/ktrn20>

## Shared transcription factors contribute to distinct cell fates

Felicia SL Ng<sup>a</sup>, Fernando J Calero-Nieto<sup>a</sup> & Berthold Göttgens<sup>a</sup>

<sup>a</sup> Department of Haematology; Wellcome Trust and MRC Cambridge Stem Cell Institute & Cambridge Institute for Medical Research; Cambridge University; Cambridge, UK

Accepted author version posted online: 25 Nov 2014. Published online: 06 Jan 2015.



CrossMark

[Click for updates](#)

To cite this article: Felicia SL Ng, Fernando J Calero-Nieto & Berthold Göttgens (2014) Shared transcription factors contribute to distinct cell fates, *Transcription*, 5:5, e978173, DOI: [10.4161/21541264.2014.978173](https://doi.org/10.4161/21541264.2014.978173)

To link to this article: <http://dx.doi.org/10.4161/21541264.2014.978173>

PLEASE SCROLL DOWN FOR ARTICLE

Taylor & Francis makes every effort to ensure the accuracy of all the information (the "Content") contained in the publications on our platform. Taylor & Francis, our agents, and our licensors make no representations or warranties whatsoever as to the accuracy, completeness, or suitability for any purpose of the Content. Versions of published Taylor & Francis and Routledge Open articles and Taylor & Francis and Routledge Open Select articles posted to institutional or subject repositories or any other third-party website are without warranty from Taylor & Francis of any kind, either expressed or implied, including, but not limited to, warranties of merchantability, fitness for a particular purpose, or non-infringement. Any opinions and views expressed in this article are the opinions and views of the authors, and are not the views of or endorsed by Taylor & Francis. The accuracy of the Content should not be relied upon and should be independently verified with primary sources of information. Taylor & Francis shall not be liable for any losses, actions, claims, proceedings, demands, costs, expenses, damages, and other liabilities whatsoever or howsoever caused arising directly or indirectly in connection with, in relation to or arising out of the use of the Content.

This article may be used for research, teaching, and private study purposes. Terms & Conditions of access and use can be found at <http://www.tandfonline.com/page/terms-and-conditions>

It is essential that you check the license status of any given Open and Open Select article to confirm conditions of access and use.

## Shared transcription factors contribute to distinct cell fates

Felicia SL Ng, Fernando J Calero-Nieto, and Berthold Göttgens\*

Department of Haematology; Wellcome Trust and MRC Cambridge Stem Cell Institute & Cambridge Institute for Medical Research; Cambridge University; Cambridge, UK

**G**enome-wide transcription factor (TF) binding profiles differ dramatically between cell types. However, not much is known about the relationship between cell-type-specific binding patterns and gene expression. A recent study demonstrated how the same TFs can have functional roles when binding to largely non-overlapping genomic regions in hematopoietic progenitor and mast cells. Cell-type specific binding profiles of shared TFs are therefore not merely the consequence of opportunistic and functionally irrelevant binding to accessible chromatin, but instead have the potential to make meaningful contributions to cell-type specific transcriptional programs.

Transcription factors (TFs) are important regulators of cell-type-specific gene expression, and represent the paradigm for DNA-binding proteins that influence cellular development. Hematopoiesis has long served as a model to study the transcriptional control of cell type specification, and transcriptional regulatory elements for several major regulators of hematopoietic stem cells (HSCs) have been studied in detail using both mammalian and lower vertebrate model organisms.<sup>1-14</sup> Nevertheless, much remains to be learned about the cell-type-specific transcriptional mechanisms that govern hematopoietic cell type identity. A thorough investigation into how TFs can contribute to distinct transcriptional programs, therefore, is critical for understanding how cells acquire and maintain their identity. During hematopoietic stem cell differentiation and blood cell development, it is well known that these cells share many TFs across distinct lineages. The PU.1 TF, for example, auto-regulates itself in 2 different cell types (myeloid and

B-cells) through co-operative interaction with distinct cell-specific TFs.<sup>6</sup> Furthermore, the SCL TF is required not only for specifications of HSC but also differentiation along the erythroid and megakaryocytic lineages.<sup>15,16</sup> Interestingly, binding sites for the same TF in 2 cell types have been shown to be largely non-overlapping and behave in a cell-type-specific manner.<sup>17,18</sup> These findings, therefore, raise the question as to whether both cell-type-specific and common TF binding patterns in the genome have functional consequences for defining cell fate. Several recent review papers provided in-depth discussions on what may constitute functional TF binding, suggestions to discover functional enhancers or indeed if co-operative TF binding represents a continuum rather than just 2 states.<sup>19-22</sup> These discussions revealed many unresolved questions on the topic including the fundamental need to identify binding activity that results in stable cellular states.

In a recent study, we examined the nature of binding site preferences and co-occupancy in 2 closely related cell types.<sup>23</sup> The cell types compared were primary mast cells and a multipotent hematopoietic progenitor cell line, HPC7,<sup>24</sup> which we have established as a useful model for studying early blood stem/progenitor cells.<sup>25,26</sup> Gene expression profiling by RNA-sequencing (RNA-seq) revealed many significant differences in the expression profiles of the 2 cell types. Nevertheless, many known TFs display similar expression in both cell types and this includes key regulators of hematopoietic stem cells (i.e., E2A, Erg, Fli1, Gata2, Lmo2, Meis1, PU.1, Runx1, and Scl). Generation of genome-wide TF binding maps by chromatin-immunoprecipitation followed by sequencing (ChIP-seq) of

**Keywords:** binding motif, hematopoiesis, mast cell, regression model

**Abbreviations:** TF, transcription factor; ChIP-seq, ChIP sequencing; RNA-seq, RNA sequencing; GAM, generalized additive model.

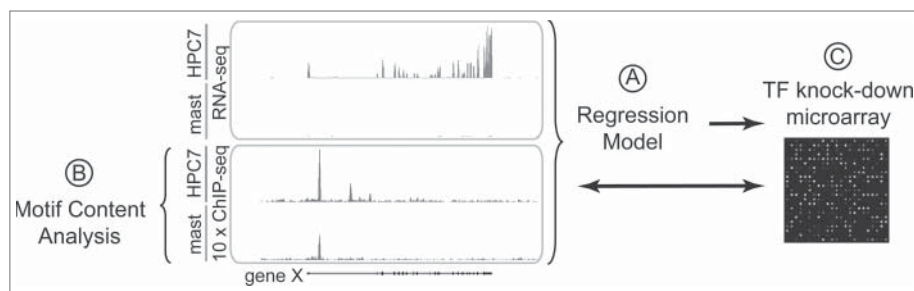
\*Correspondence to: Berthold Göttgens; Email: bg200@cam.ac.uk

Submitted: 09/30/2014

Revised: 10/14/2014

Accepted: 10/14/2014

<http://dx.doi.org/10.4161/21541264.2014.978173>



**Figure 1.** Summary of computational and experimental approaches in the genome-wide comparison of HPC7 blood progenitor and mast cells. (A) Regression models using differential TF occupancy and differential gene expression. (B) Motif content analysis of cell-type-specific and common binding regions. (C) shRNA perturbation experiments compared to TF binding and gene expression data.

those ‘shared’ TFs uncovered largely non-overlapping promoter and enhancer occupancy between the 2 cell types. For most of these HSC TFs, it was not known whether (and if so, how) they might have a role in the transcriptional regulation of mast cells. Having established a unique large-scale dataset for comparative analysis, we next asked the question as to what is the role of ‘shared’ TFs in controlling mast cell specific transcriptional programs?

We examined the observation of distinct binding patterns further by quantifying the differences in binding and their relationship to gene expression in a regression model (Fig. 1A). Regression models provide a useful and simple approach to quantify the relationships between multiple predictor variables (i.e., ‘shared’ TFs) to a response variable (i.e., gene expression). Furthermore, the availability of high resolution genome-wide data (i.e., ChIP-seq and RNA-seq) allowed the construction of accurate predictive models. By considering genes bound by at least one of these TFs, these models describe gene expression as a function of combinatorial effects of one or more relative TF binding strengths. In the past, other studies have also utilized regression statistics to build a variety of prediction models that include, for example, TF binding data, histone modification, and consensus binding motifs.<sup>27,28</sup> Until recently, these studies have focused on predicting gene expression in one cell type, obtaining high levels of correlation with observed data. However, applying the model to another cell type often results in poor accuracy since static expression levels were used to

construct the model. Our study, on the other hand, employed regression models for 2 cell types to predict changes in gene expression. Thus, when differential promoter and distal enhancer occupancy were encoded into the model, quantitative changes in TF binding were found to be predictive of quantitative changes in differential gene expression. Moreover, prediction accuracy improved when multiple binding events were taken into account.

Many regression models described so far assumed that TF binding and gene expression have a linear relationship. Although linearity provides an easy means for performing computations, it is known that this relationship could be non-linear, at least for a subset of TFs. Indeed, gene expression has been shown to be a non-linear function of TF binding as shown in an analysis of K562 and GM112878 cell lines.<sup>29</sup> Here, the authors used generalized additive models<sup>30,31</sup> (GAMs) to identify TFs that influence cell-type-specific gene expression. Similarly, in the HPC7 and mast data set, using GAMs to predict changes in differential gene expression improved prediction accuracy compared to linear regression in 2 ways: (i) allowing non-linearity of TF binding and; (ii) incorporating TF interaction terms to account for co-operative interaction between 2 TFs. Importantly, we could conclude from our modeling that ‘shared’ TFs play an important role in HPC7 and mast cell transcriptional programs, since their differential binding is predictive of expression.

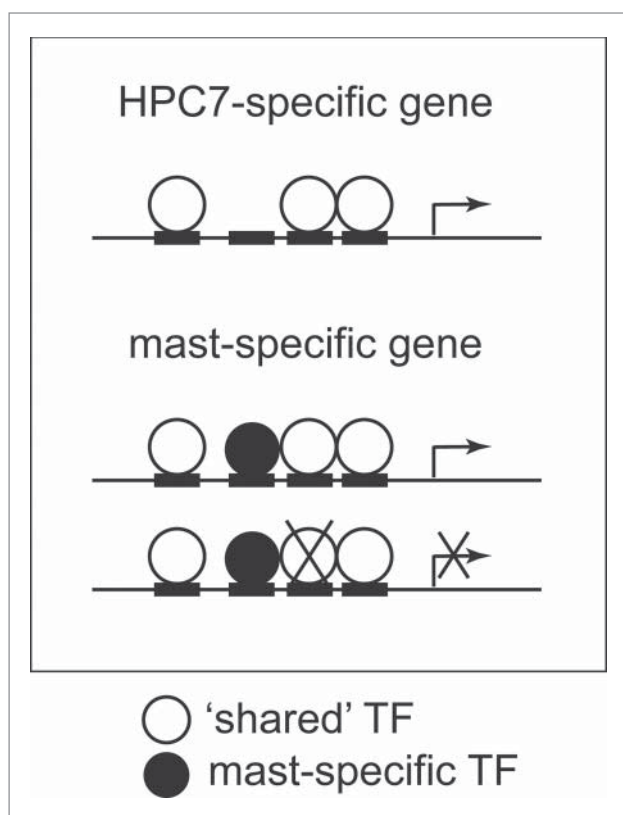
TF binding depends on interactions with DNA and other TFs at regulatory

regions, although it has been suggested that in some occasions it can be largely driven by its cellular environment with no functional consequences. We compared the motif content of common and cell-type-specific regulatory regions (Fig. 1B) under the hypothesis that the presence of binding motifs for ‘shared’ TF at cell-type-specific bound regulatory regions may provide additional evidence of direct involvement of the ‘shared’ TFs in cell-type-specific programs. We uncovered large numbers of cell-specific and common binding regions that contained consensus sequence motifs for the ‘shared’ TFs. To further analyze the role of ‘shared’ TFs in cell-type-specific genetic programs, we followed 2 approaches: (i) we reduced the levels of some of the ‘shared’ TFs (E2A, Erg, Fli1, Gata2, Lmo2, PU.1) by performing shRNA perturbation experiments (Fig. 1C) and analyzed the effect on cell-type-specific genetic programs and; (ii) we mutated the putative binding motifs present in cell-type-specific promoters and analyzed the direct effect on gene expression. Our first approach showed that individual knock-down of these regulators significantly affects large numbers of regulated targets with significant changes in cell-type-specific gene expression. Worthy of note, we also found that reduction of the levels of one ‘shared’ factor can affect the recruitment of other ‘shared’ factors. Our second approach demonstrated that ablation of binding motifs for ‘shared’ TFs resulted in strong reduction or even complete abolition of promoter activity.

Although binding of ‘shared’ TFs without functional consequences cannot be ruled out for a given specific binding event, our results clearly indicate that the same TF can play an active and determinant role in different cell-type-specific transcriptional programs.

## Conclusions and Future Directions

Our recent analysis of genome-wide binding sites and gene expression in HPC7 and mast cells has provided new insights into our understanding of lineage-specific transcriptional regulation



**Figure 2.** Schematic of gene regulation by 'shared' and mast-specific TFs. Both mast-specific and 'shared' TFs are important for cell-type-specific gene regulation. Knocking-down a 'shared' TF in mast cells results in significant changes to gene expression for a large number of mast-specific genes.

during differentiation. Furthermore, it reports comprehensive genome-scale data for primary mast cells, where until now very little genome-wide data existed. The use of computational and experimental approaches provided several lines of evidence to show that occupancy of distinct regions in different cell lineages by the same TFs are functionally important and not just a consequence of the cellular environment (Fig. 2).

It is well known that combinatorial TF binding is prevalent in the regulation of metazoan gene expression. However, the specific rules governing these TF interactions and the effects of individual regulatory elements on gene expression remain largely unknown, even though they are recognized to have broad implications for cellular reprogramming. In a study of differentiating embryonic stem cells, for example, the Isl1 protein functions as a component of 2 different regulatory complexes that differ by one TF but lead to

either spinal or cranial motor neuron formation.<sup>32</sup> TF binding site arrangements, genomic sequence context (e.g., flanking bases, GC content), enhancer composition (heterotypic or homotypic arrangements of TF binding), and DNA tertiary structure are all expected to influence transcriptional activity. Elucidation of the molecular mechanisms, therefore, will improve our understanding of how the same TF contributes to distinct cell fates. Research in this area has so far provided little consensus and one example is demonstrated by the 'enhanceosome' vs. 'TF collective' debate. The classical example of TF complex formation as proposed by the enhanceosome model requires a precise configuration of multiple TFs to function as a unit of regulation. In the well-studied *IFN- $\beta$*  enhancer, synergistic interaction between all essential TFs is necessary and leads to an 'all-or-nothing' response.<sup>33</sup> At the opposite end of the spectrum, the 'TF collective' model suggests that the effects

of TF binding on gene expression are cumulative with varying degrees of potency and redundancy. A recent study comparing TF binding in 2 mouse strains has shown that both 'shared' and cell-type-specific TFs are important for establishing the epigenetic and transcriptomic landscapes in mouse macrophages.<sup>34</sup> Of note, comparison of naturally occurring single nucleotide polymorphisms (SNPs) that differed between the 2 mouse strains revealed strain-specific binding site motifs that correlated with strain-specific gain or loss of TF binding and influenced the recruitment of cell-type-specific factors. The findings in this study also emphasized the presence of binding sites and nucleosome conformation as important features for co-operative TF binding although defined distances between TFs was not crucial. Integrative analyses taking into account dynamic binding, sequence information and 3-dimensional DNA structure to infer general principles of transcriptional regulation would, therefore, help to resolve the disparate findings in this field.

#### Disclosure of Potential Conflicts of Interest

No potential conflicts of interest disclosed.

#### Funding

Work in the authors' laboratory is supported by grants from Leukemia and Lymphoma Research, the MRC, BBSRC, the Leukemia and Lymphoma Society, Cancer Research UK, the National Institute for Health Research Cambridge Biomedical Research Center, and core support grants by the Wellcome Trust to the Cambridge Institute for Medical Research and Wellcome Trust & MRC Cambridge Stem Cell Institute. FSLN is the recipient of a Yousef Jameel scholarship.

#### References

1. Landry JR, Kinston S, Knezevic K, Donaldson JJ, Green AR, Gottgens B. Flt1, Elf1, and Ets1 regulate the proximal promoter of the LMO2 gene in endothelial cells. *Blood* 2005; 106:2680-7; PMID:15994290; <http://dx.doi.org/10.1182/blood-2004-12-4755>
2. Bockamp EO, Fordham JL, Gottgens B, Murrell AM, Sanchez MJ, Green AR. Transcriptional regulation of the stem cell leukemia gene by PU.1 and Elf-1. *J Biol*

- Chem 1998; 273:29032-42; PMID:9786909; <http://dx.doi.org/10.1074/jbc.273.44.29032>
3. Delabesse E, Ogilvy S, Chapman MA, Piltz SG, Gottgens B, Green AR. Transcriptional regulation of the SCL locus: identification of an enhancer that targets the primitive erythroid lineage in vivo. *Mol Cell Biol* 2005; 25:5215-25; PMID:15923636; <http://dx.doi.org/10.1128/MCB.25.12.5215-5225.2005>
  4. Barton LM, Gottgens B, Gering M, Gilbert JG, Grafham D, Rogers J, Bentley D, Patient R, Green AR. Regulation of the stem cell leukemia (SCL) gene: a tale of two fishes. *Proc Natl Acad Sci U S A* 2001; 98:6747-52; PMID:11381108
  5. Pimanda JE, Chan WY, Donaldson IJ, Bowen M, Green AR, Gottgens B. Endoglin expression in the endothelium is regulated by Flt-1, Erg, and Elf-1 acting on the promoter and a -8-kb enhancer. *Blood* 2006; 107:4737-45; PMID:16484587; <http://dx.doi.org/10.1182/blood-2005-12-4929>
  6. Leddin M, Perrod C, Hoogenkamp M, Ghani S, Assi S, Heinz S, Wilson NK, Follows G, Schonheit J, Vockentanz L, et al. Two distinct auto-regulatory loops operate at the PU.1 locus in B cells and myeloid cells. *Blood* 2011; 117:2827-38; PMID:21239694; <http://dx.doi.org/10.1182/blood-2010-08-302976>
  7. Bee T, Ashley EL, Bickley SR, Jarratt A, Li PS, Sloan-Stanley J, Gottgens B, de Bruijn MF. The mouse Runx1 +23 hematopoietic stem cell enhancer confers hematopoietic specificity to both Runx1 promoters. *Blood* 2009; 113:5121-4; PMID:19321859; <http://dx.doi.org/10.1182/blood-2008-12-193003>
  8. Wilson NK, Timms RT, Kinston SJ, Cheng YH, Oram SH, Landry JR, Mullender J, Ottersbach K, Gottgens B. Gfi1 expression is controlled by five distinct regulatory regions spread over 100 kilobases, with Scl/Tal1, Gata2, PU.1, Erg, Meis1, and Runx1 acting as upstream regulators in early hematopoietic cells. *Mol Cell Biol* 2010; 30:3853-63; PMID:20516218; <http://dx.doi.org/10.1128/MCB.00032-10>
  9. Gottgens B, Ferreira R, Sanchez MJ, Ishibashi S, Li J, Spensberger D, Lefevre P, Ottersbach K, Chapman M, Kinston S, et al. cis-Regulatory remodeling of the SCL locus during vertebrate evolution. *Mol Cell Biol* 2010; 30:5741-51; PMID:20956563; <http://dx.doi.org/10.1128/MCB.00870-10>
  10. Nottingham WT, Jarratt A, Burgess M, Speck CL, Cheng JF, Prabhakar S, Rubin EM, Li PS, Sloan-Stanley J, Kong ASJ, et al. Runx1-mediated hematopoietic stem-cell emergence is controlled by a Gata/Ets/SCL-regulated enhancer. *Blood* 2007; 110:4188-97; PMID:17823307; <http://dx.doi.org/10.1182/blood-2007-07-100883>
  11. Gottgens B, Nastos A, Kinston S, Piltz S, Delabesse EC, Stanley M, Sanchez MJ, Cia-Uitz A, Patient R, Green AR. Establishing the transcriptional programme for blood: the SCL stem cell enhancer is regulated by a multiprotein complex containing Ets and GATA factors. *EMBO J* 2002; 21:3039-50; PMID:12065417; <http://dx.doi.org/10.1093/emboj/cdf286>
  12. Levantini E, Lee S, Radomska HS, Hetherington CJ, Alberich-Jorda M, Amabile G, Zhang P, Gonzalez DA, Zhang J, Basseres DS, et al. RUNX1 regulates the CD34 gene in haematopoietic stem cells by mediating interactions with a distal regulatory element. *EMBO J* 2011; 30:4059-70; PMID:21873977; <http://dx.doi.org/10.1038/emboj.2011.285>
  13. Chan WY, Follows GA, Lacaud G, Pimanda JE, Landry JR, Kinston S, Knezevic K, Piltz S, Donaldson IJ, Gambardella L, et al. The paralogous hematopoietic regulators Lyl1 and Scl are coregulated by Ets and GATA factors, but Lyl1 cannot rescue the early Scl<sup>-/-</sup> phenotype. *Blood* 2007; 109:1908-16; PMID:17053063; <http://dx.doi.org/10.1182/blood-2006-05-023226>
  14. Landry JR, Bonadies N, Kinston S, Knezevic K, Wilson NK, Oram SH, Janes M, Piltz S, Hammett M, Carter J, et al. Expression of the leukemia oncogene Lmo2 is controlled by an array of tissue-specific elements dispersed over 100 kb and bound by Tal1/Lmo2, Ets, and Gata factors. *Blood* 2009; 113:5783-92; PMID:19171877; <http://dx.doi.org/10.1182/blood-2008-11-187757>
  15. Hall MA, Curtis DJ, Metcalf D, Elefanti AG, Sourris K, Robb L, Gotherth JR, Jane SM, Begley CG. The critical regulator of embryonic hematopoiesis, SCL, is vital in the adult for megakaryopoiesis, erythropoiesis, and lineage choice in CFU-S12. *Proc Natl Acad Sci USA* 2003; 100:992-7; PMID:12552125; <http://dx.doi.org/10.1073/pnas.0237324100>
  16. Mikkola HK, Klintman J, Yang H, Hock H, Schlaeger TM, Fujiwara Y, Orkin SH. Haematopoietic stem cells retain long-term repopulating activity and multipotency in the absence of stem-cell leukaemia SCL/tal-1 gene. *Nature* 2003; 421:547-51; PMID:12540851; <http://dx.doi.org/10.1038/nature01345>
  17. Hannah R, Joshi A, Wilson NK, Kinston S, Gottgens B. A compendium of genome-wide hematopoietic transcription factor maps supports the identification of gene regulatory control mechanisms. *Exp Hematol* 2011; 39:531-41; PMID:21338655; <http://dx.doi.org/10.1016/j.exphem.2011.02.009>
  18. Wei G, Abraham BJ, Yagi R, Jothi R, Cui K, Sharma S, Narlikar L, Northrup DL, Tang Q, Paul WE, et al. Genome-wide analyses of transcription factor GATA3-mediated gene regulation in distinct T cell types. *Immunity* 2011; 35:299-311; PMID:21867929; <http://dx.doi.org/10.1016/j.immuni.2011.08.007>
  19. Kellis M, Wold B, Snyder MP, Bernstein BE, Kundaje A, Marinov GK, Ward LD, Birney E, Crawford GE, Dekker J, et al. Defining functional DNA elements in the human genome. *Proc Natl Acad Sci USA* 2014; 111:6131-8; PMID:24753594; <http://dx.doi.org/10.1073/pnas.1318948111>
  20. Spivakov M. Spurious transcription factor binding: non-functional or genetically redundant? *BioEssays* 2014; 36:798-806; PMID:24888900; <http://dx.doi.org/10.1002/bies.201400036>
  21. Haessler M, Joly JS. When needles look like hay: how to find tissue-specific enhancers in model organism genomes. *Dev Biol* 2011; 350:239-54; PMID:21130761; <http://dx.doi.org/10.1016/j.ydbio.2010.11.026>
  22. DeVilbiss AW, Sanalkumar R, Johnson KD, Keles S, Bresnick EH. Hematopoietic transcriptional mechanisms: from locus-specific to genome-wide vantage points. *Exp Hematol* 2014; 42:618-29; PMID:24816274; <http://dx.doi.org/10.1016/j.exphem.2014.05.004>
  23. Calero-Nieto FJ, Ng FS, Wilson NK, Hannah R, Moignard V, Leal-Cervantes AI, Jimenez-Madrid I, Diamanti E, Wernisch L, Gottgens B. Key regulators control distinct transcriptional programmes in blood progenitor and mast cells. *EMBO J* 2014; 33:1212-26; PMID:24760698; <http://dx.doi.org/10.1002/emboj.201386825>
  24. Pinto do OP, Wandzioch E, Kolterud A, Carlsson L. Multipotent hematopoietic progenitor cells immortalized by Lhx2 self-renew by a cell nonautonomous mechanism. *Exp Hematol* 2001; 29:1019-28; PMID:11495708; [http://dx.doi.org/10.1016/S0301-472X\(01\)00666-X](http://dx.doi.org/10.1016/S0301-472X(01)00666-X)
  25. Wilson NK, Foster SD, Wang X, Knezevic K, Schutte J, Kaimakis P, Chilarska PM, Kinston S, Ouwehand WH, Dzierzak E, et al. Combinatorial transcriptional control in blood stem/progenitor cells: genome-wide analysis of ten major transcriptional regulators. *Cell Stem Cell* 2010; 7:532-44; PMID:20887958; <http://dx.doi.org/10.1016/j.stem.2010.07.016>
  26. Wilson NK, Miranda-Saavedra D, Kinston S, Bonadies N, Foster SD, Calero-Nieto F, Dawson MA, Donaldson IJ, Dumon S, Frampton J, et al. The transcriptional program controlled by the stem cell leukemia gene Scl/Tal1 during early embryonic hematopoietic development. *Blood* 2009; 113:5456-65; PMID:19346495; <http://dx.doi.org/10.1182/blood-2009-01-200048>
  27. Conlon EM, Liu XS, Lieb JD, Liu JS. Integrating regulatory motif discovery and genome-wide expression analysis. *Proc Natl Acad Sci U S A* 2003; 100:3339-44; PMID:12626739; <http://dx.doi.org/10.1073/pnas.0630591100>
  28. Karlic R, Chung HR, Lasserre J, Vlahovicek K, Vingron M. Histone modification levels are predictive for gene expression. *Proc Natl Acad Sci U S A* 2010; 107:2926-31; PMID:20133639; <http://dx.doi.org/10.1073/pnas.0909344107>
  29. Wang D, Rendon A, Ouwehand W, Wernisch L. Transcription factor co-localization patterns affect human cell type-specific gene expression. *BMC Genomics* 2012; 13:263; PMID:22721266; <http://dx.doi.org/10.1186/1471-2164-13-263>
  30. Hastie T, Tibshirani R. Generalized Additive Models. *Stat Sci* 1986; 1:297-310; <http://dx.doi.org/10.1214/ss/1177013604>
  31. Wood SN. Fast stable restricted maximum likelihood and marginal likelihood estimation of semiparametric generalized linear models. *J R Stat Soc B* 2011; 73:3-36; <http://dx.doi.org/10.1111/j.1467-9868.2010.00749.x>
  32. Mazzoni EO, Mahony S, Closser M, Morrison CA, Nedelec S, Williams DJ, An D, Gifford DK, Wichterle H. Synergistic binding of transcription factors to cell-specific enhancers programs motor neuron identity. *Nat Neurosci* 2013; 16:1219-27; PMID:23872598; <http://dx.doi.org/10.1038/nn.3467>
  33. Maniatis T, Falvo JV, Kim TH, Kim TK, Lin CH, Parckh BS, Wathlet MG. Structure and function of the interferon-beta enhancosome. *Cold Spring Harb Symp Quant Biol* 1998; 63:609-20; PMID:10384326; <http://dx.doi.org/10.1101/sqb.1998.63.609>
  34. Heinz S, Romanoski CE, Benner C, Allison KA, Kaikonen MU, Orozco LD, Glass CK. Effect of natural genetic variation on enhancer selection and function. *Nature* 2013; 503:487-92; PMID:24121437; <http://dx.doi.org/10.1038/nature12615>